

# V&V Reference Report

## L2 ASCDS Version : 8.5.1.1

Observation 5443 - L2 Version 3  
Chandra X-Ray Center

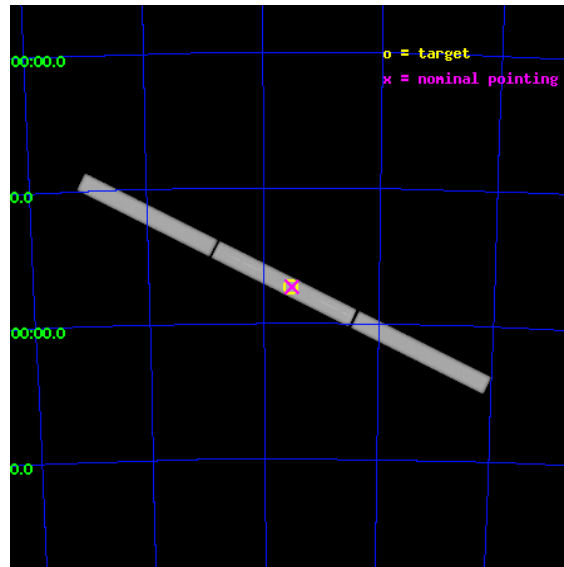
L2 Processing Date : Dec 23 2012

## Contents

<b>1</b>	<b>Front</b>	<b>2</b>
<b>2</b>	<b>OBI</b>	<b>3</b>
2.1	OBI . . . . .	3
2.1.1	Images . . . . .	3
2.1.2	Parameters . . . . .	4
2.1.3	Events . . . . .	4
2.2	Compared Parameters . . . . .	5
2.3	Aspect . . . . .	6
2.4	Star Slots . . . . .	9
2.4.1	Slot 3 . . . . .	9
2.4.2	Slot 4 . . . . .	10
2.4.3	Slot 5 . . . . .	11
2.4.4	Slot 6 . . . . .	12
2.4.5	Slot 7 . . . . .	13
2.5	FID Slots . . . . .	14
2.5.1	Slot 0 . . . . .	14
2.5.2	Slot 1 . . . . .	15
2.5.3	Slot 2 . . . . .	16
<b>3</b>	<b>Gratings</b>	<b>17</b>
3.1	LETG Arm . . . . .	17
<b>A</b>	<b>Summary</b>	<b>19</b>
A.1	Status . . . . .	19
A.2	Comments . . . . .	19

# 1 Front

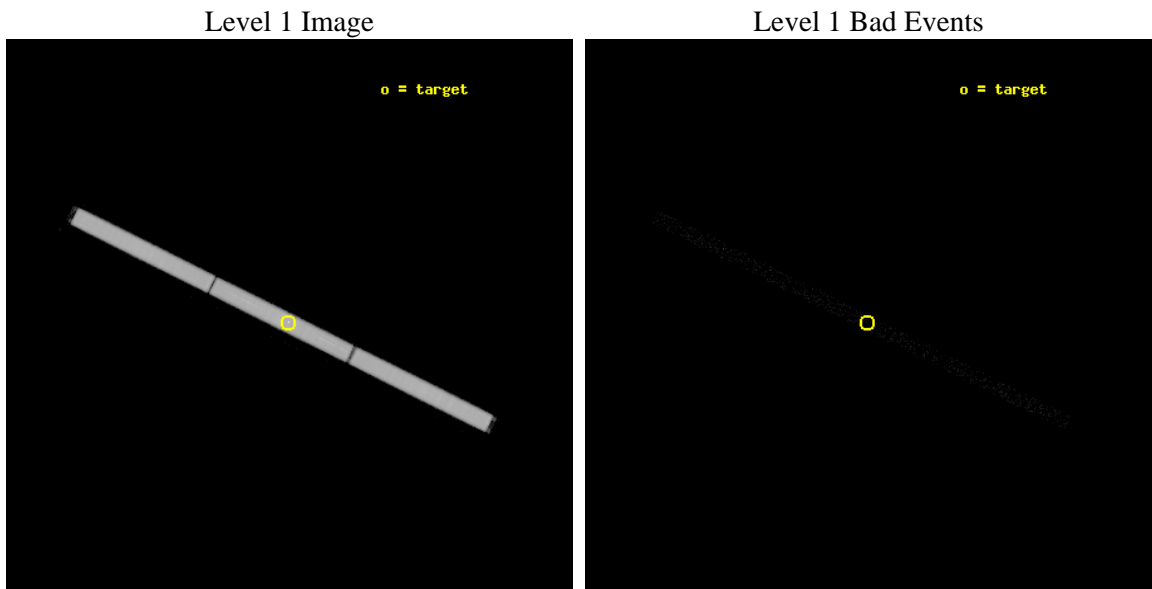
seq_num	300159	Sequence number
obs_id	5443	Observation id
title	Testing Accretion Scenarios at the Eddington Limit	Proposal title
observer	Dr. Vadim Burwitz	Principal investigator
object	RXJ0513.9-6951	Source name
ra_targ	78.461667	Observer's specified target RA [deg]
dec_targ	-69.863056	Observer's specified target Dec [deg]
ra_nom	78.449473796924	Nominal RA [deg]
dec_nom	-69.865064883673	Nominal Dec [deg]
roll_nom	206.30206474592	Nominal Roll [deg]
revision	3	Processing version of data
ontime	22651.219781101	[s]
livetime	22480.219740379	Ontime multiplied by DTCOR
l2events	1400984	Number of level 2 events



## 2 OBI

### 2.1 OBI

#### 2.1.1 Images



## 2.1.2 Parameters

obi_num	2	Obi number	sched_exp_time	22500.000000	[s] Scheduled observation exposure time
ascdsver	8.5.1.1	Processing system revision	ontime	22651.219781101	[s]
caldbver	4.5.5	&#160	l1events	1950970	Number of level 1 events
date	2012-12-23T05:01:25	Date and time of file creation			
revision	3	Processing version of data			

## 2.1.3 Events

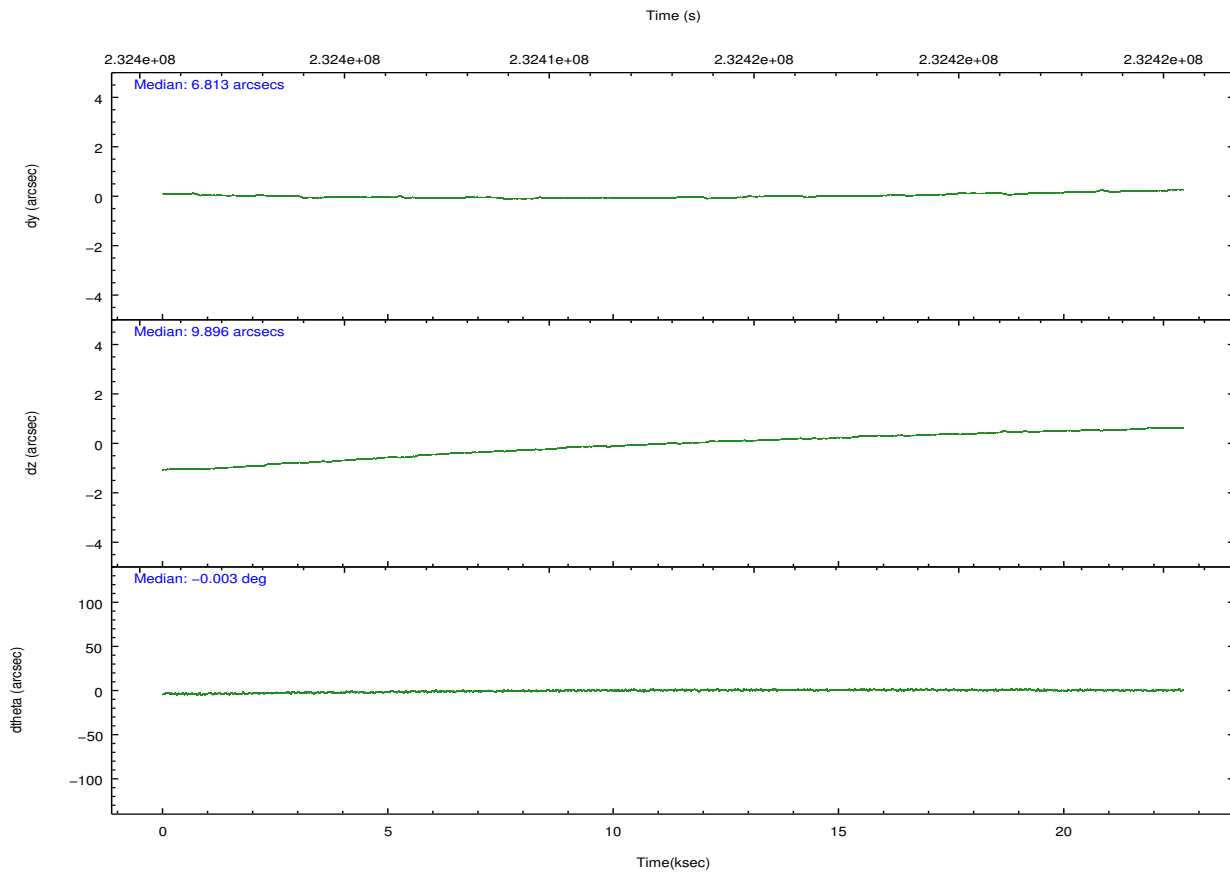
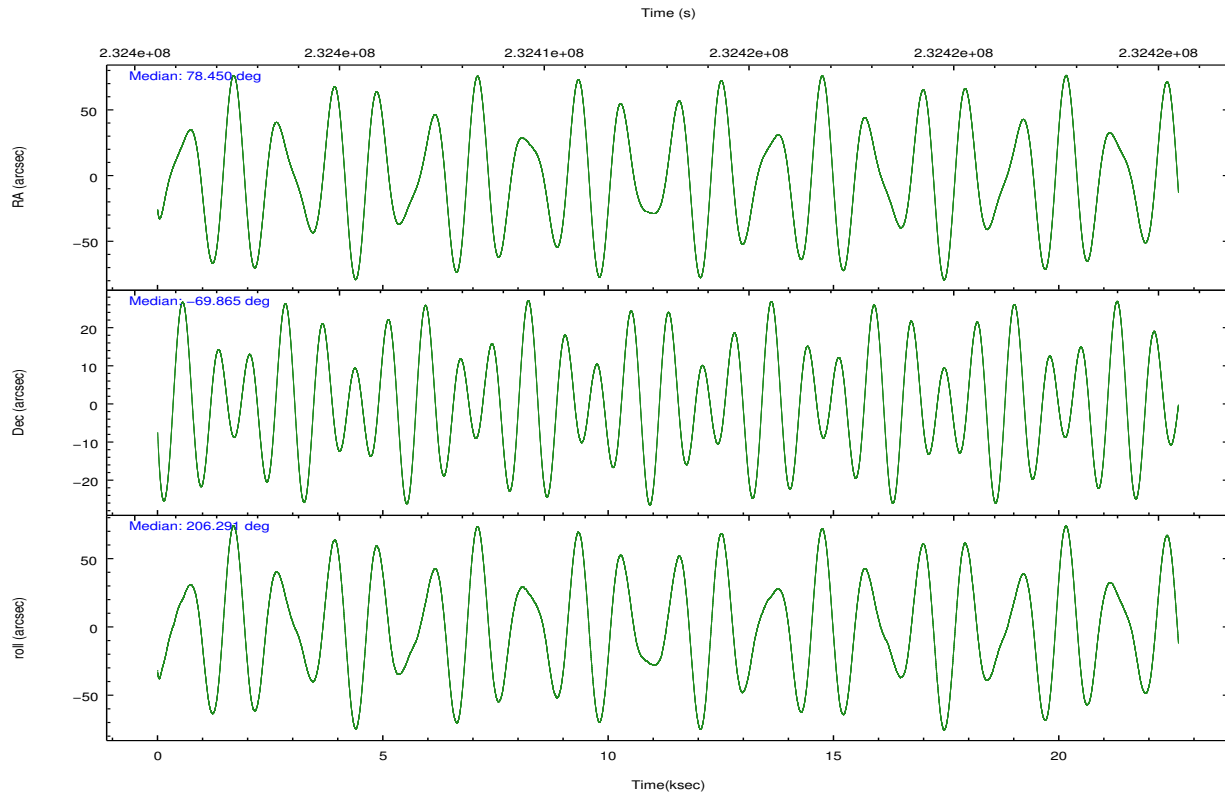
### Level 1 Events

	<b>segment 1</b>	<b>segment 2</b>	<b>segment 3</b>
level 1 events	649255	652988	648727
rejected events	23367	22622	23123
rejected %	3%	3%	3%

## 2.2 Compared Parameters

Parameter	Planned	Actual	Parameter	Planned	Actual
Instrument	HRC	HRC	Obspar format version number	7	7
Detector	HRC-S	HRC-S			
Grating	LETG	LETG			
Data mode	OBSERVING	OBSERVING	Obspar file type	PREDICTED	ACTUAL
Observation mode	POINTING	POINTING	Obspar update status	NONE	UPDATED
[deg] Pointing RA	78.491881	78.44947379692375			
[deg] Pointing Dec	-69.840441	-69.86506488367274			
[deg] Pointing Roll	206.274548	206.3020647459243			
[mm] SIM focus pos	-1.429586	-1.428180813131781			
[mm] SIM defocus	0.1037507710433287	0.1051558262725154			
[mm] SIM translation stage pos	250.455976	250.4635187648994			
[mm] SIM translation stage offset	0	-0.007540371344731511			
[s] Observation start time (MET)	232401852.184000	232400844.63205			
Observation start date	2005-05-13T20:03:08	2005-05-13T19:47:24			
[s] Observation end time (MET)	232424352.184000	232425122.27065			
Observation end date	2005-05-14T02:18:08	2005-05-14T02:32:02			

## 2.3 Aspect

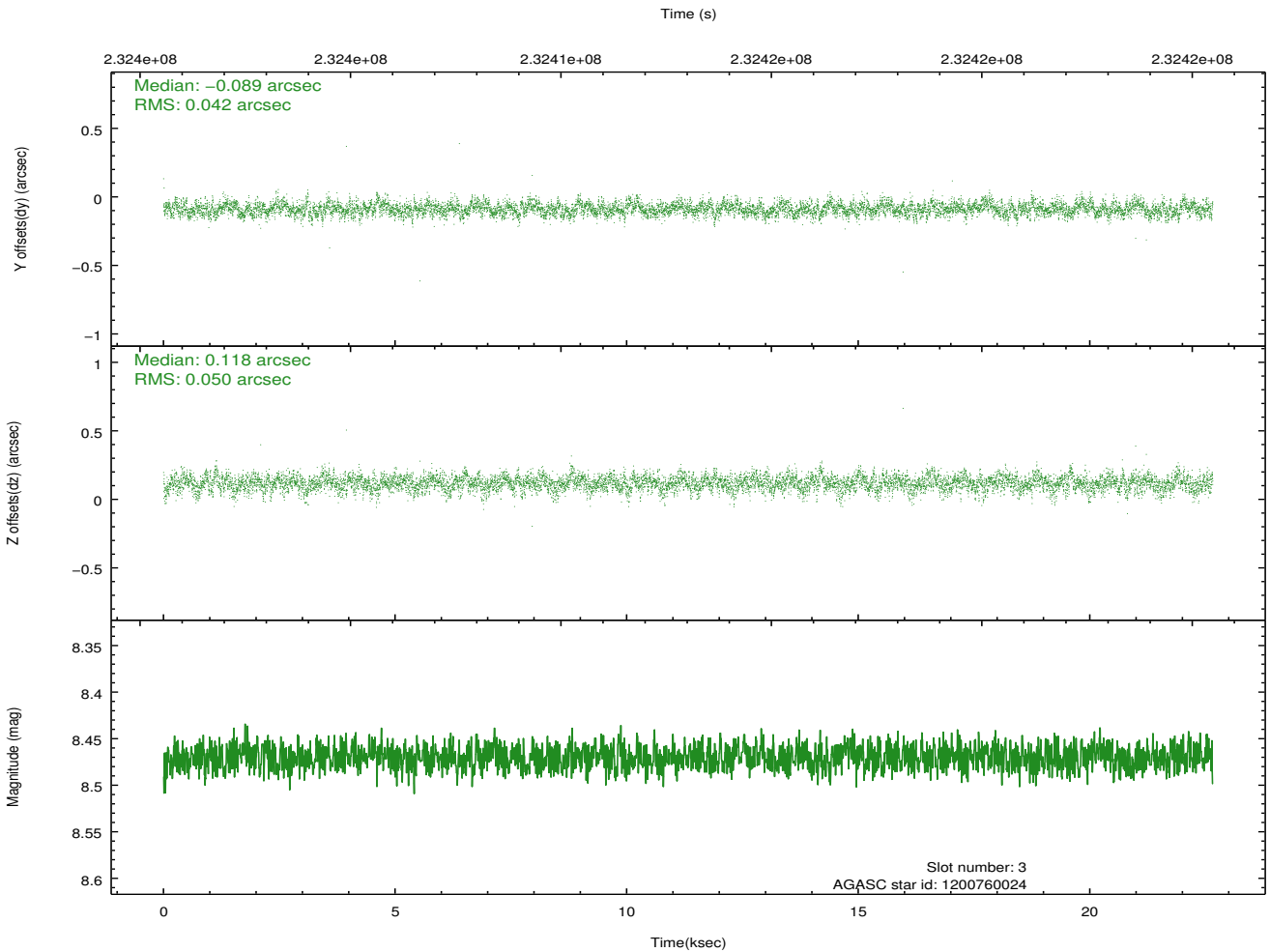
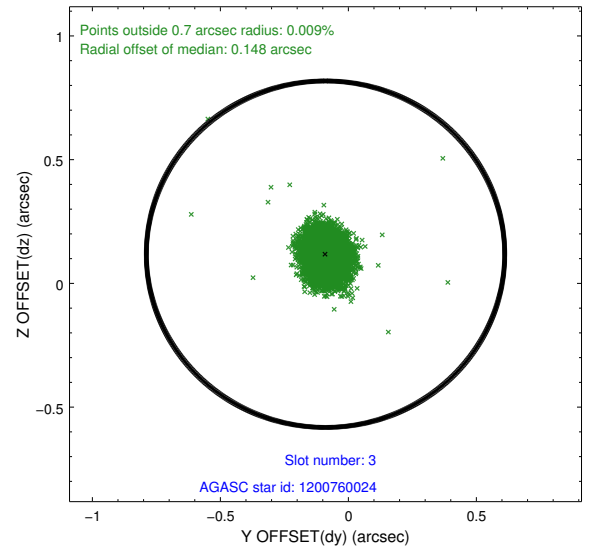
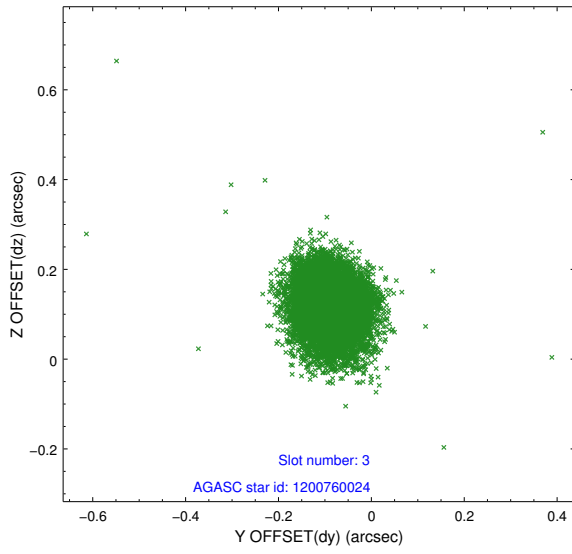


### Slot Statistics

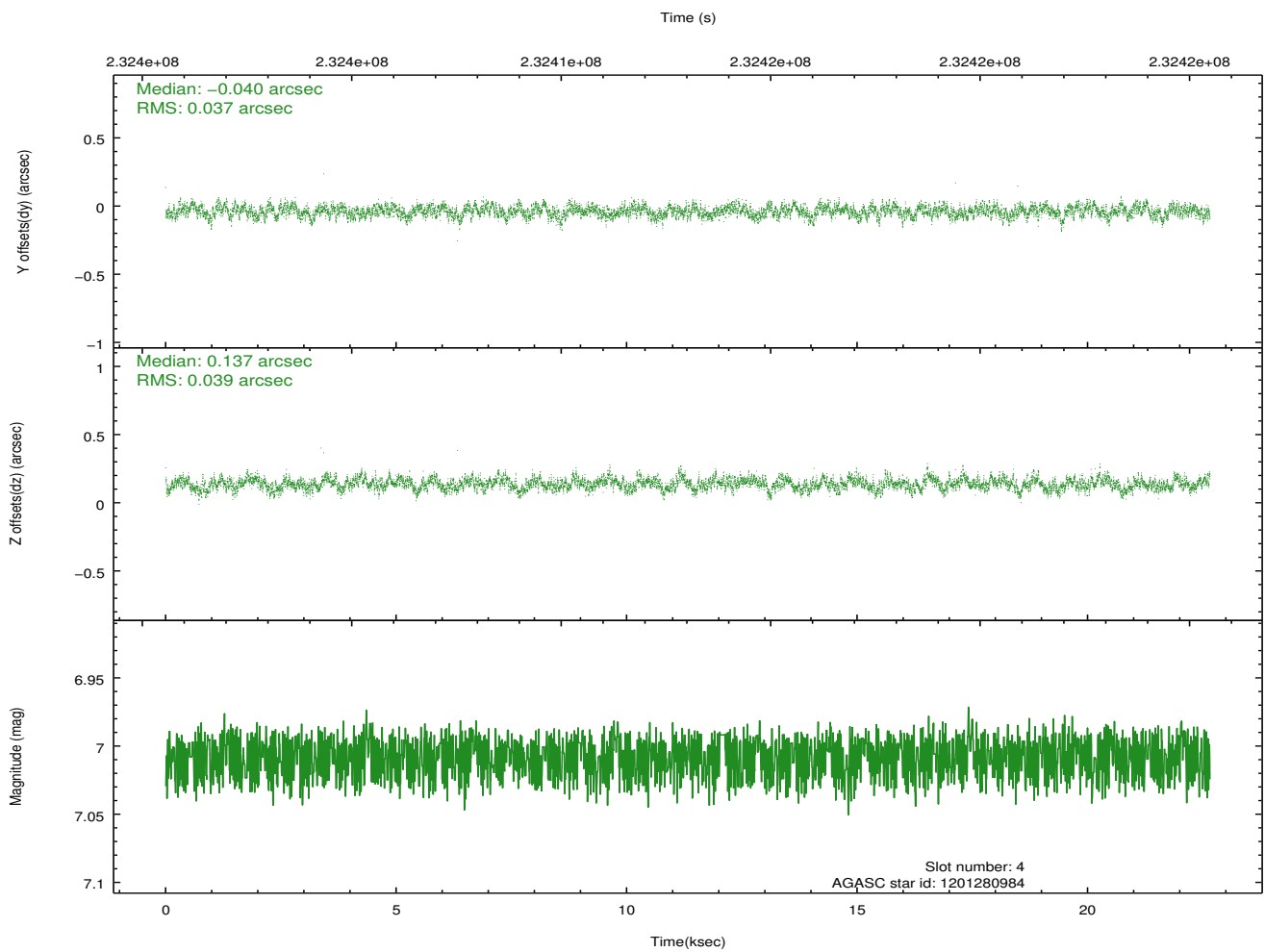
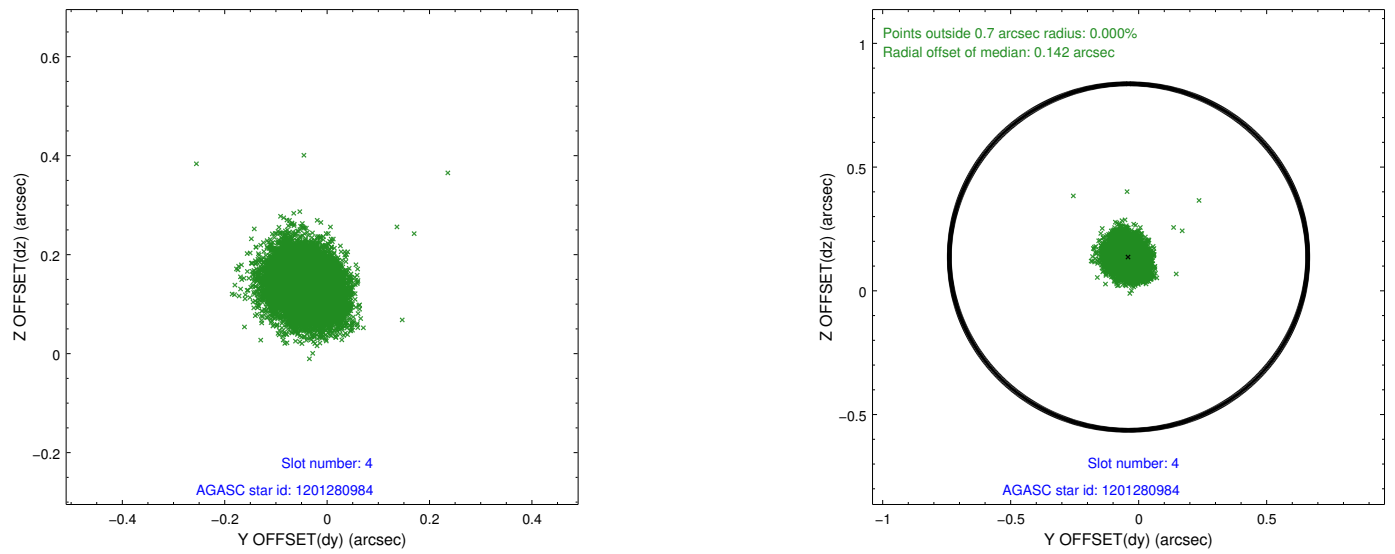
slot	status	id	mag	n_pts	med_dy	med_dz	dr1	dr2	ra	dec	mean_y	mean_z
0	FID	HRC-S-1	7.00	5525	0.117	-0.179	0.010	0.026	0.000000	0.000000	-1160.99	-458.44
1	FID	HRC-S-2	6.99	5525	0.168	-0.111	0.006	0.011	0.000000	0.000000	1238.53	-451.11
2	FID	HRC-S-3	7.01	5525	0.104	-0.011	0.011	0.031	0.000000	0.000000	-1163.49	571.17
3	GUIDE	1200760024	8.47	11045	-0.089	0.118	0.067	0.112	77.625244	-69.320410	163.35	-2159.38
4	GUIDE	1201280984	7.01	11051	-0.040	0.137	0.058	0.091	77.867422	-69.546090	237.77	-1294.55
5	GUIDE	1201406760	9.30	11042	-0.046	0.047	0.109	0.175	78.725555	-70.284883	454.13	1560.62
6	GUIDE	1201409432	9.03	11046	0.019	-0.224	0.087	0.142	79.317334	-70.259796	-228.56	1803.75
7	GUIDE	1201279208	9.19	11042	0.157	-0.077	0.109	0.175	76.214504	-69.704761	2357.54	-1648.69

## 2.4 Star Slots

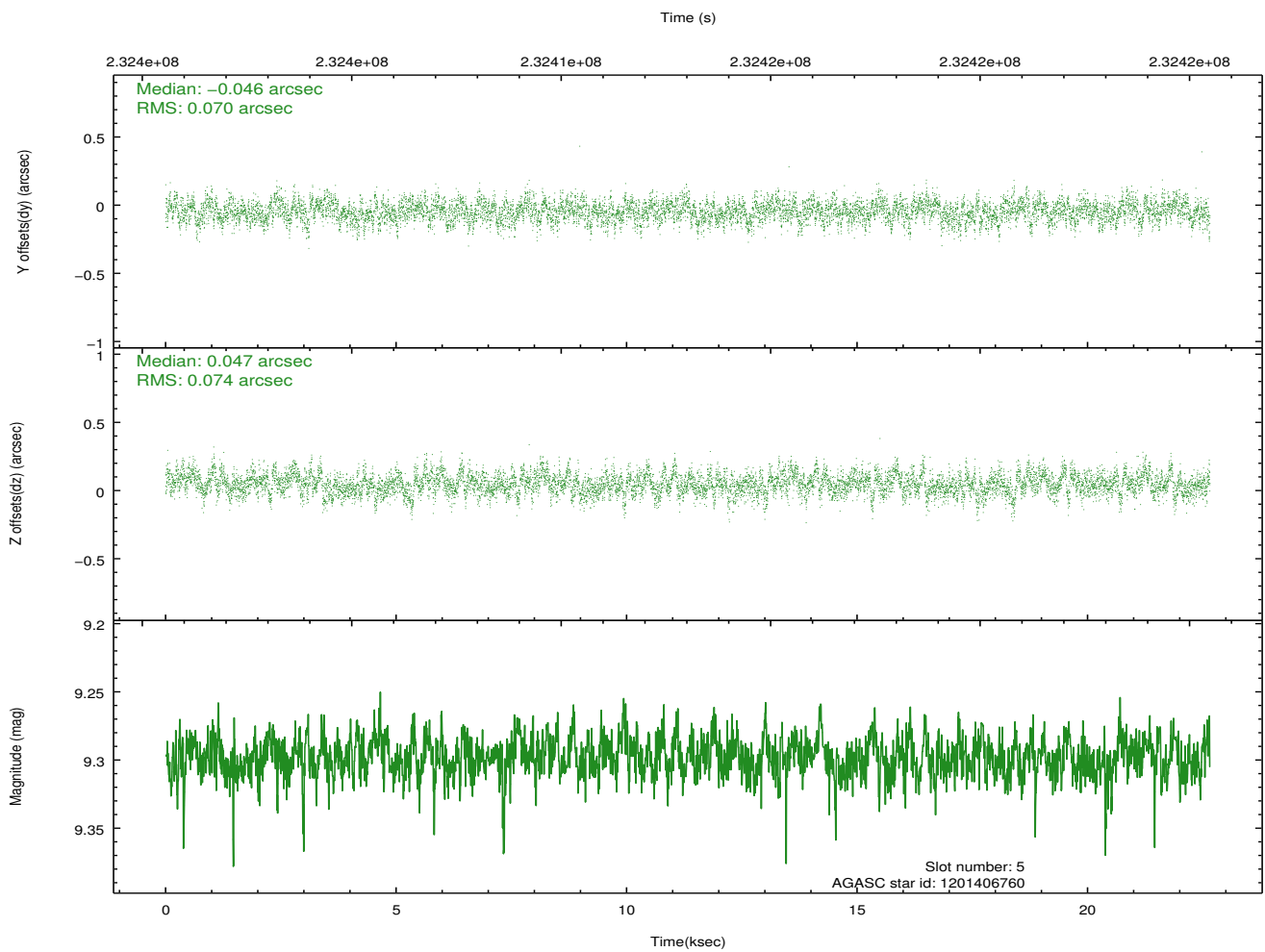
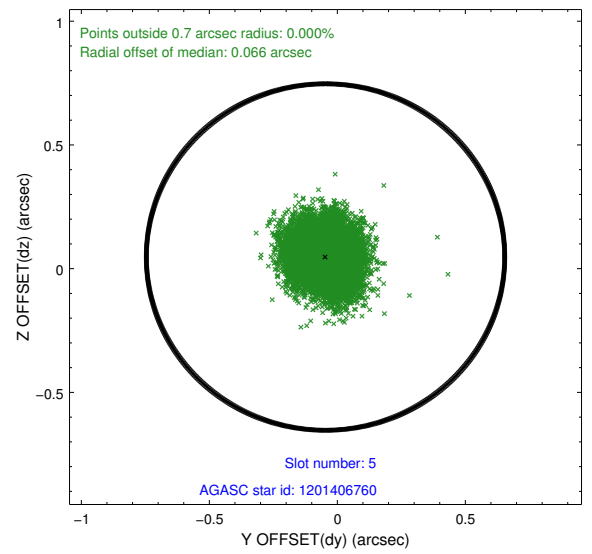
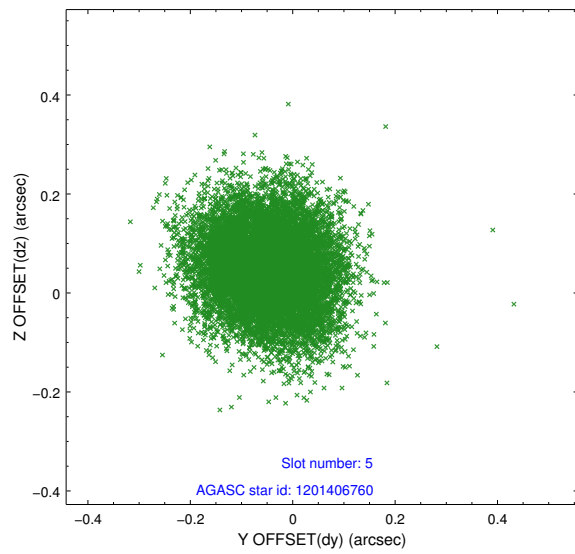
### 2.4.1 Slot 3



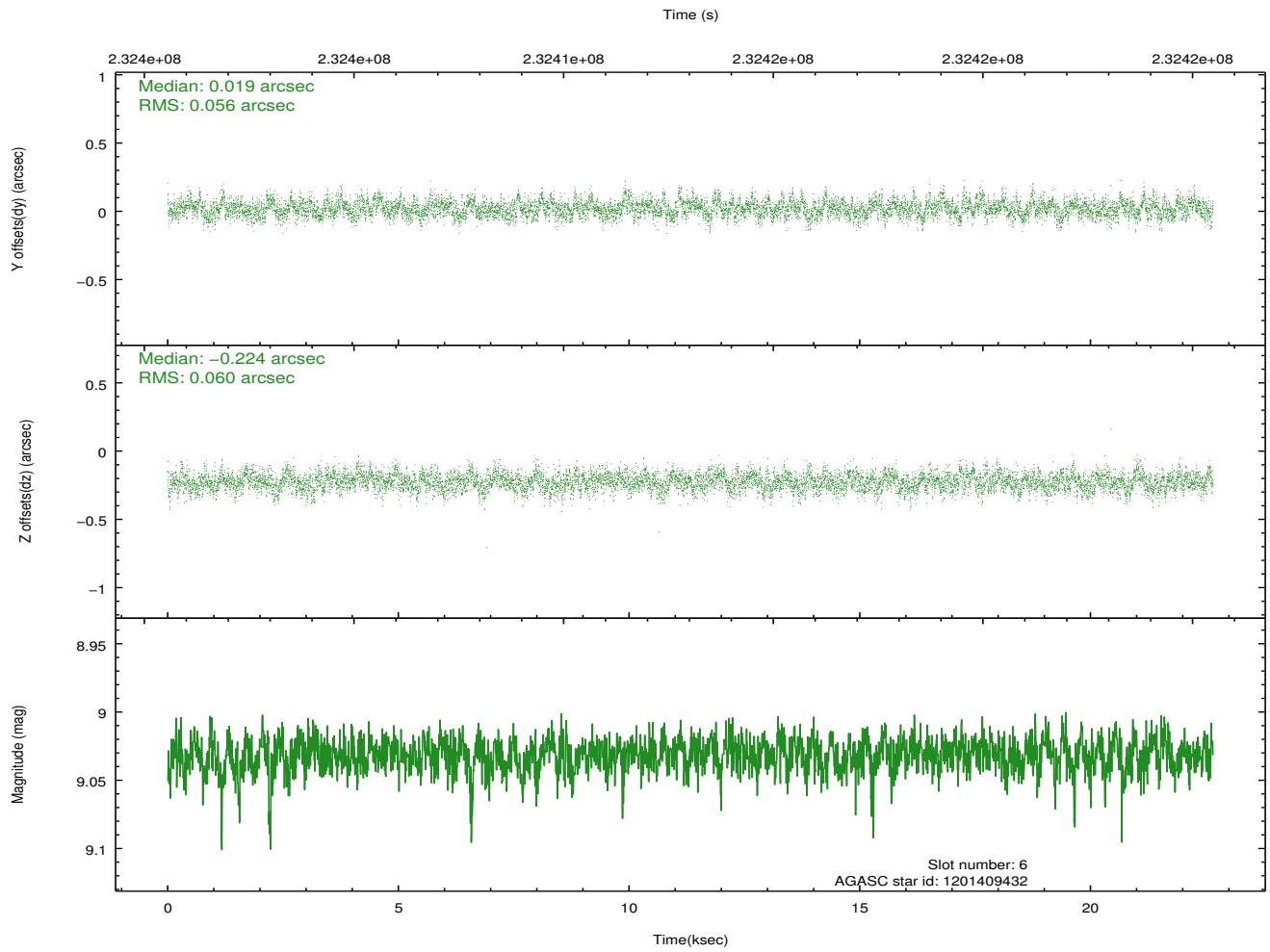
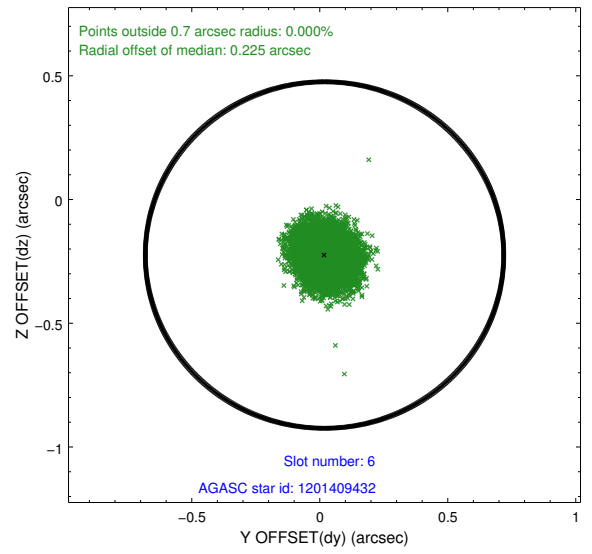
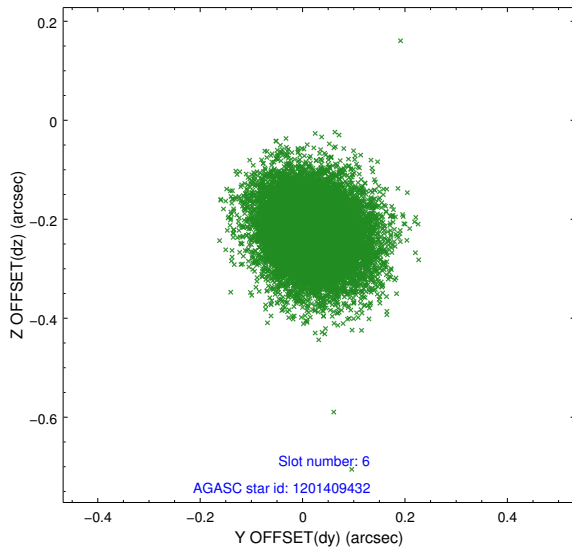
## 2.4.2 Slot 4



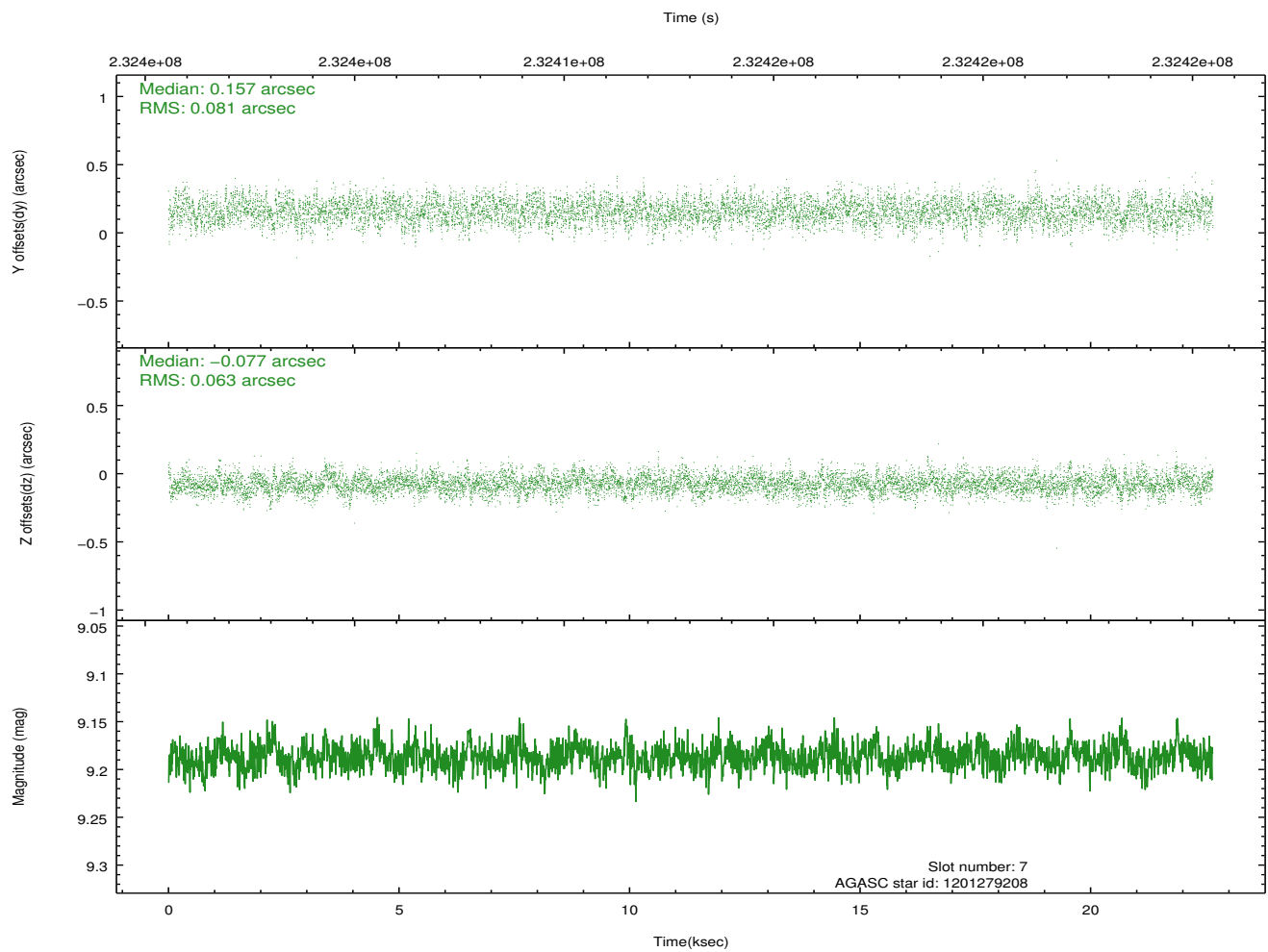
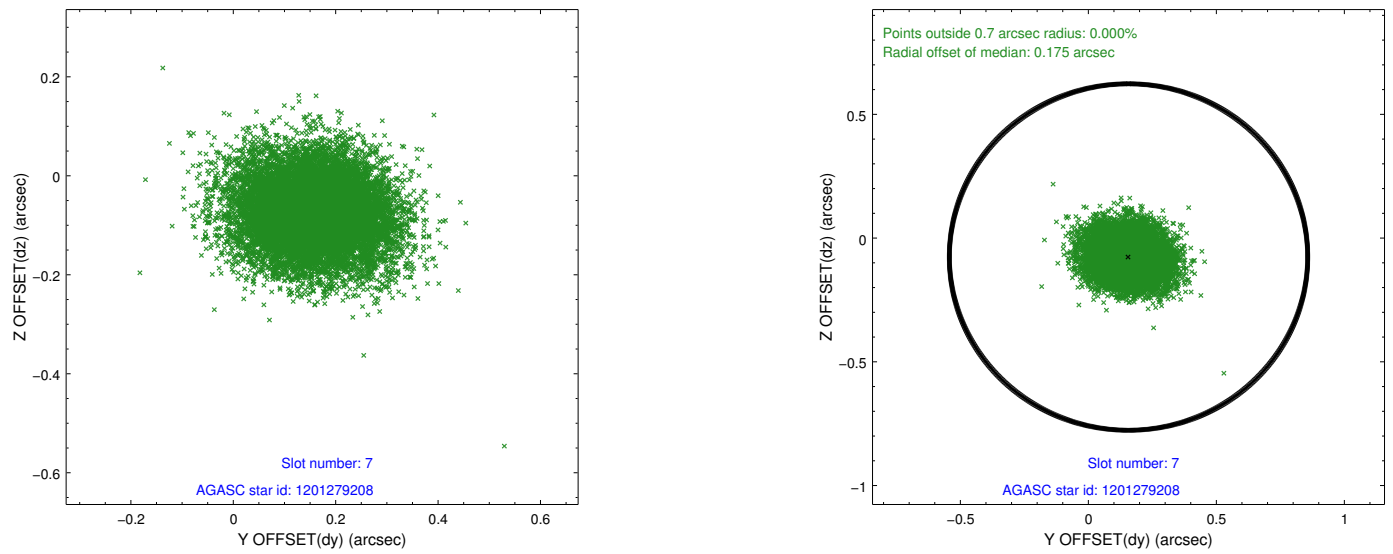
### 2.4.3 Slot 5



### 2.4.4 Slot 6

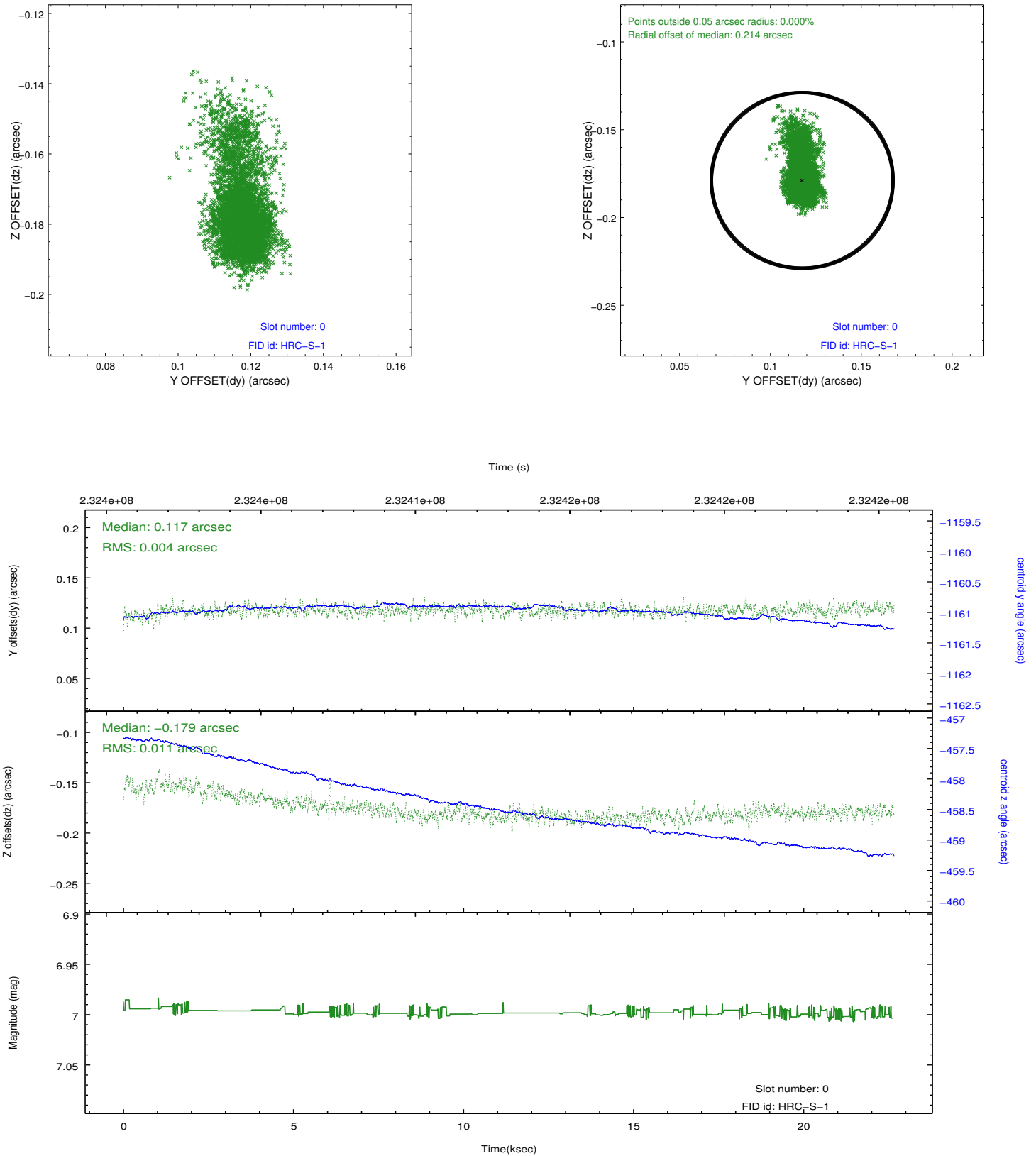


## 2.4.5 Slot 7

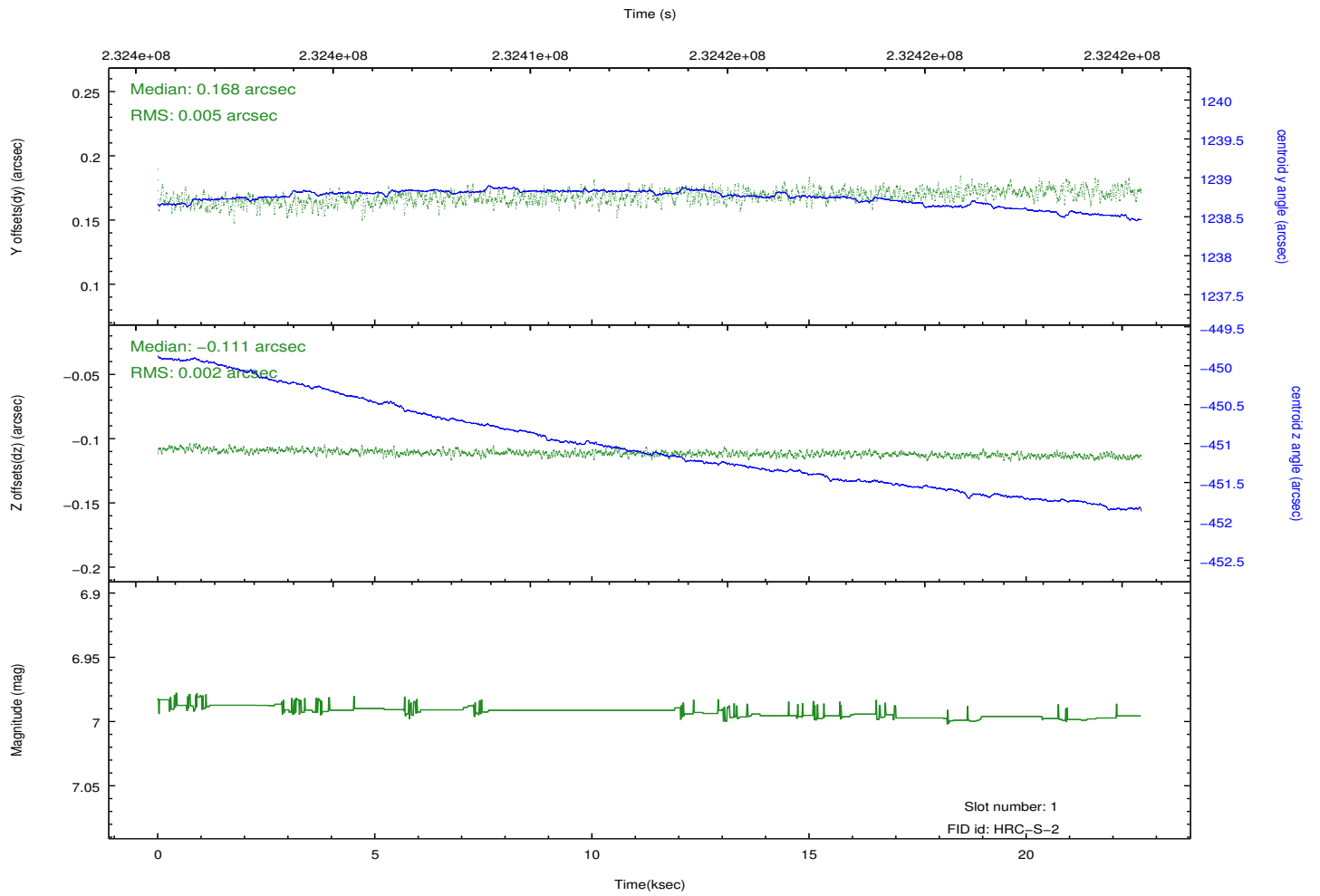
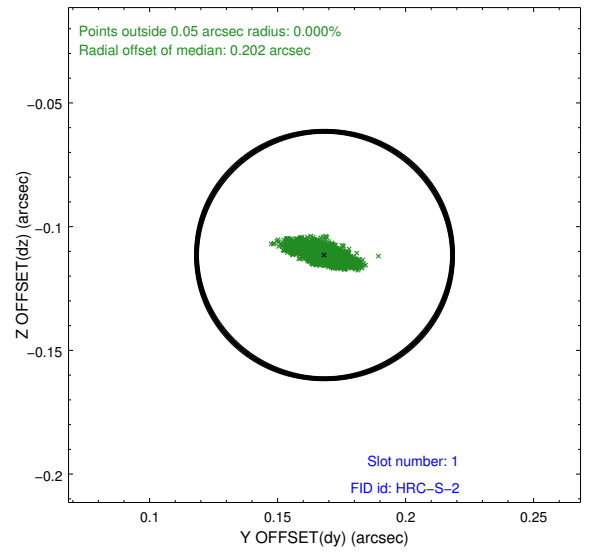
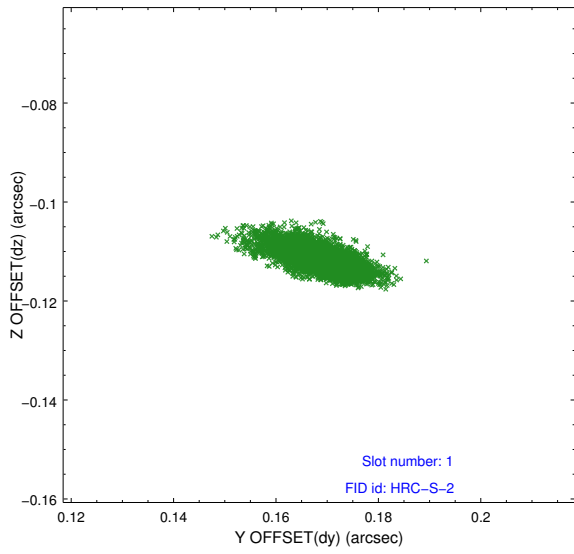


## 2.5 FID Slots

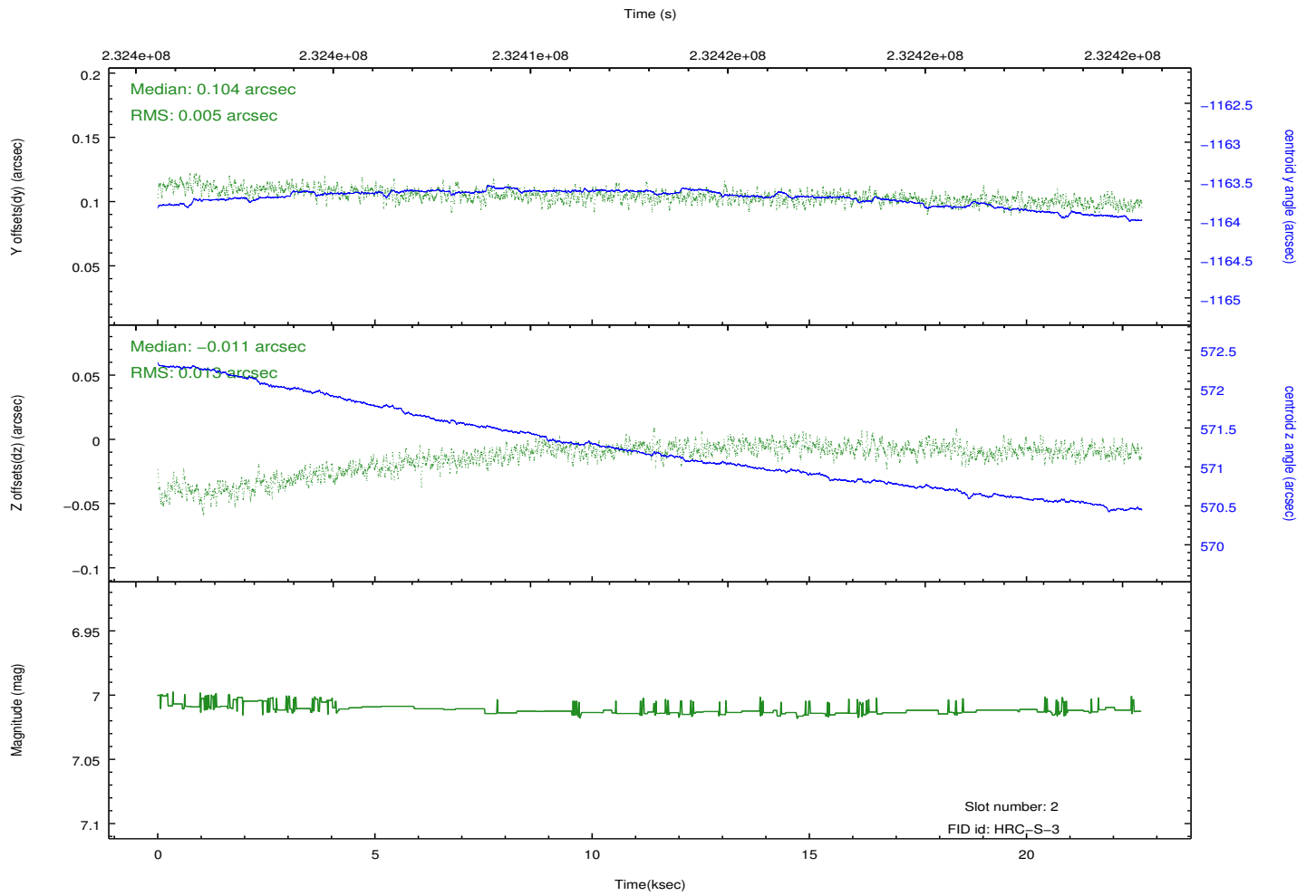
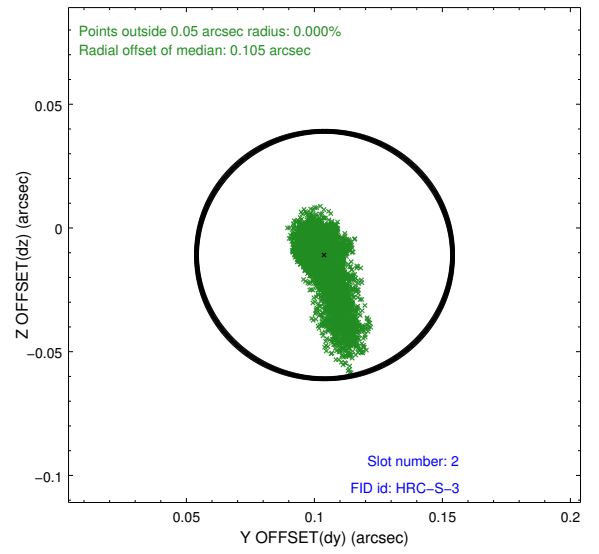
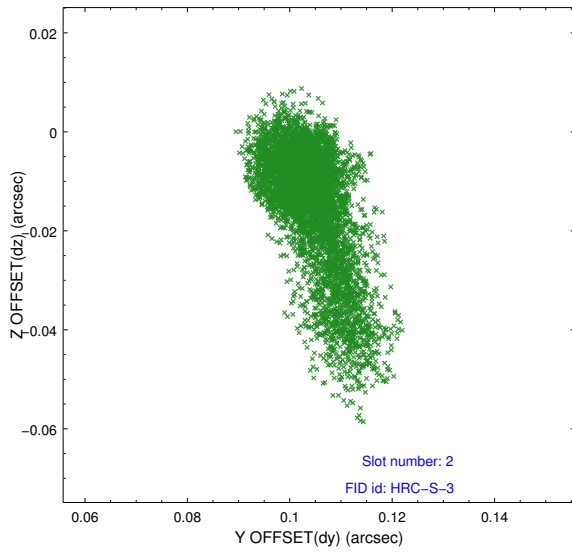
### 2.5.1 Slot 0



## 2.5.2 Slot 1

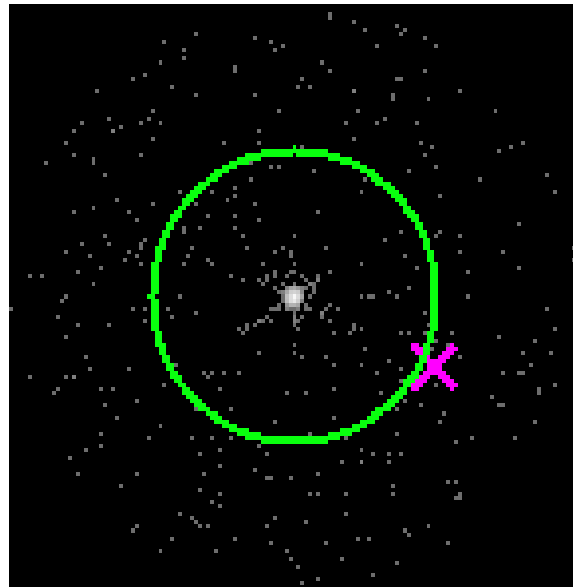


### 2.5.3 Slot 2

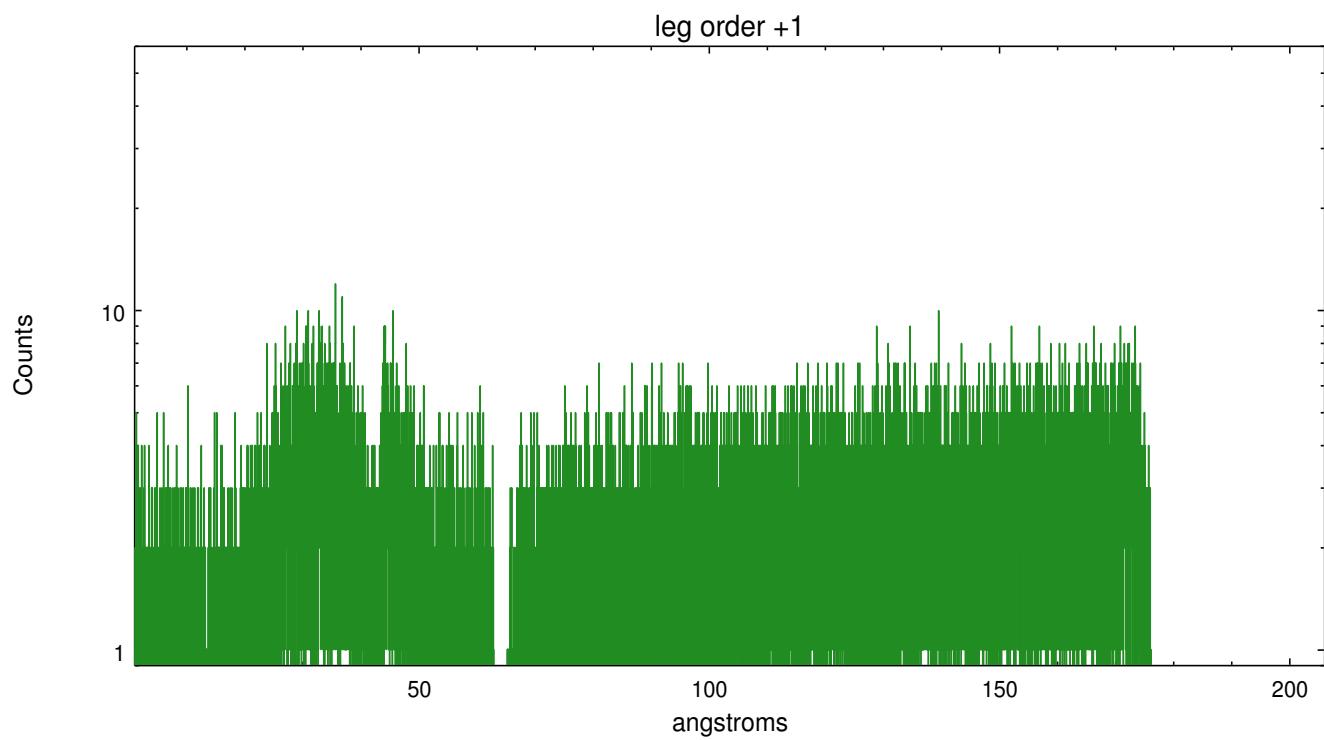
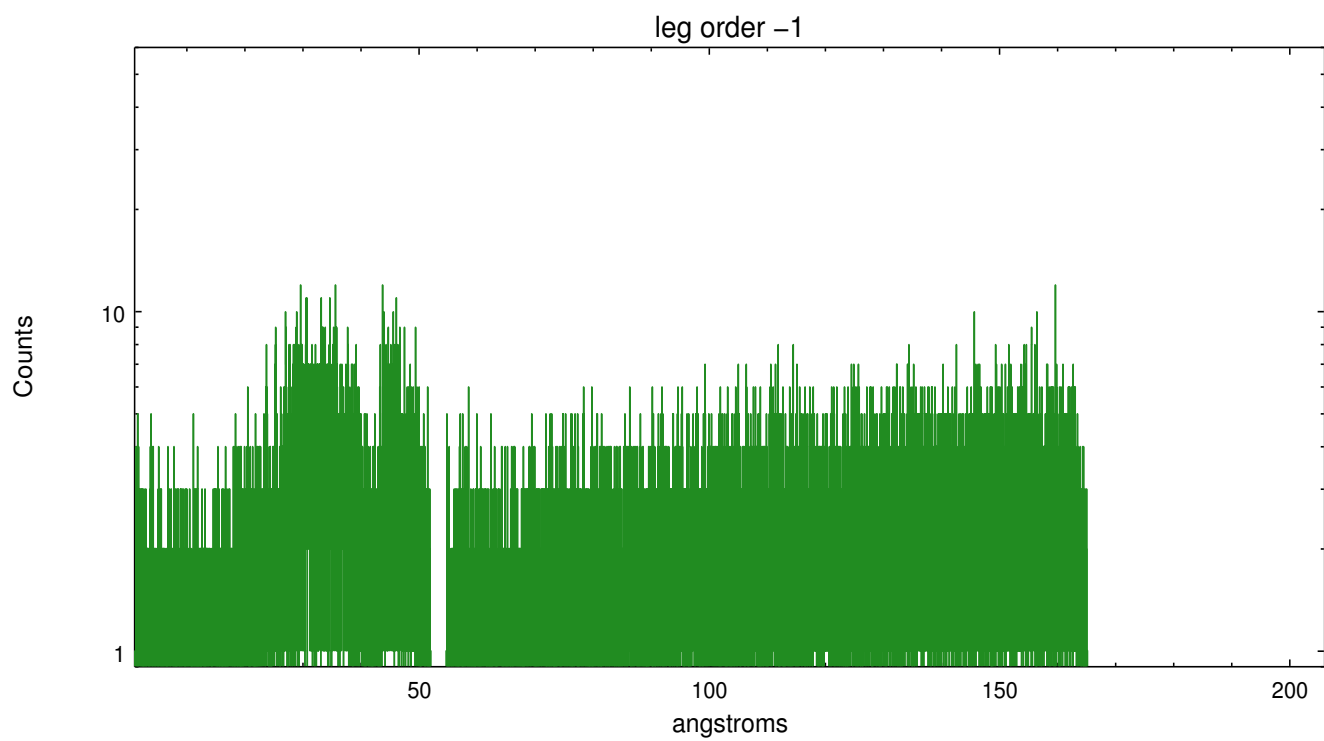


### 3 Gratings

#### 3.1 LETG Arm



LETG Zero Order



# A Summary

## A.1 Status

V&V Scientist	Joy Nichols
V&V Date (YYYY-MM-DD)	2013.01.16
V&V Edition	1
V&V Disposition and Status	OK
V&V Charge Time	22.65147

## A.2 Comments