

V&V Reference Report

L2 ASCDS Version : 8.4.3

Observation 5543 - L2 Version 4
Chandra X-Ray Center

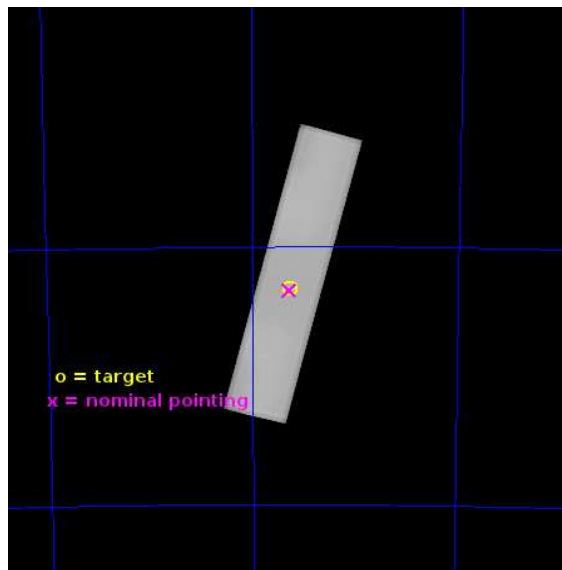
L2 Processing Date : Jun 29 2013

Contents

1	Front	2
2	OBI	3
2.1	OBI	3
2.1.1	Images	3
2.1.2	Parameters	4
2.1.3	Events	4
2.2	Compared Parameters	5
2.3	Aspect	6
2.4	Star Slots	9
2.4.1	Slot 3	9
2.4.2	Slot 4	10
2.4.3	Slot 5	11
2.4.4	Slot 6	12
2.4.5	Slot 7	13
2.5	FID Slots	14
2.5.1	Slot 0	14
2.5.2	Slot 1	15
2.5.3	Slot 2	16
A	Summary	17
A.1	Status	17
A.2	Comments	17

1 Front

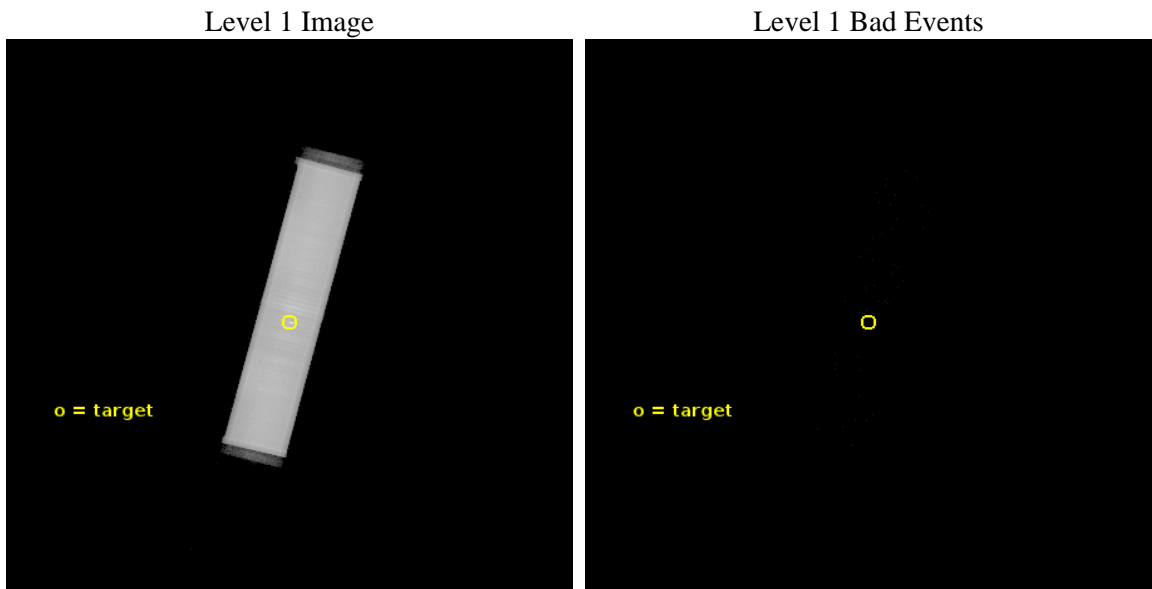
seq_num	500535	Sequence number
obs_id	5543	Observation id
title	Search for Sub-Millisecond Pulsars in 47 Tuc	Proposal title
observer	Prof. Robert Rutledge	Principal investigator
object	47 Tuc	Source name
ra_targ	6.021667	Observer's specified target RA [deg]
dec_targ	-72.080528	Observer's specified target Dec [deg]
ra_nom	6.0251510295186	Nominal RA [deg]
dec_nom	-72.085084691507	Nominal Dec [deg]
roll_nom	284.54375024207	Nominal Roll [deg]
revision	4	Processing version of data
ontime	51393.630499154	[s]
livetime	50650.873731272	Ontime multiplied by DTCOR
l2events	3560611	Number of level 2 events



2 OBI

2.1 OBI

2.1.1 Images



2.1.2 Parameters

obi_num	0	Obi number	sched_exp_time	51048.205000	[s] Scheduled observation exposure time
ascdsver	10	Processing system revision	ontime	51395.552378714	[s]
caldsver	4.5.7	 	l1events	4617053	Number of level 1 events
date	2013-06-29T03:34:24	Date and time of file creation			
revision	4	Processing version of data			

2.1.3 Events

Level 1 Events

	segment 1	segment 2	segment 3
level 1 events	3938	4613103	12
rejected events	66	112162	3
rejected %	1%	2%	25%

2.2 Compared Parameters

Parameter	Planned	Actual
Instrument	HRC	HRC
Detector	HRC-S	HRC-S
Grating	NONE	NONE
Data mode	OBSERVING	OBSERVING
Observation mode	POINTING	POINTING
[deg] Pointing RA	5.956719	6.025151029518618
[deg] Pointing Dec	-72.065726	-72.0850846915073
[deg] Pointing Roll	284.411307	284.543750242068
[mm] SIM focus pos	-1.533336	-1.526339935833849
[mm] SIM defocus	7.710433287538843e-07	0.006996703570447904
[mm] SIM translation stage pos	250.455976	250.466033080201
[mm] SIM translation stage offset	0	-0.01005468664627074
[s] Observation start time (MET)	251479057.184000	251477926.15794
Observation start date	2005-12-20T15:16:33	2005-12-20T14:58:46
[s] Observation end time (MET)	251530106.184000	251531988.76044
Observation end date	2005-12-21T05:27:22	2005-12-21T05:59:48

Parameter	Planned	Actual
Obspar format version number	7	7
Obspar file type	PREDICTED	ACTUAL
Obspar update status	NONE	UPDATED

2.3 Aspect

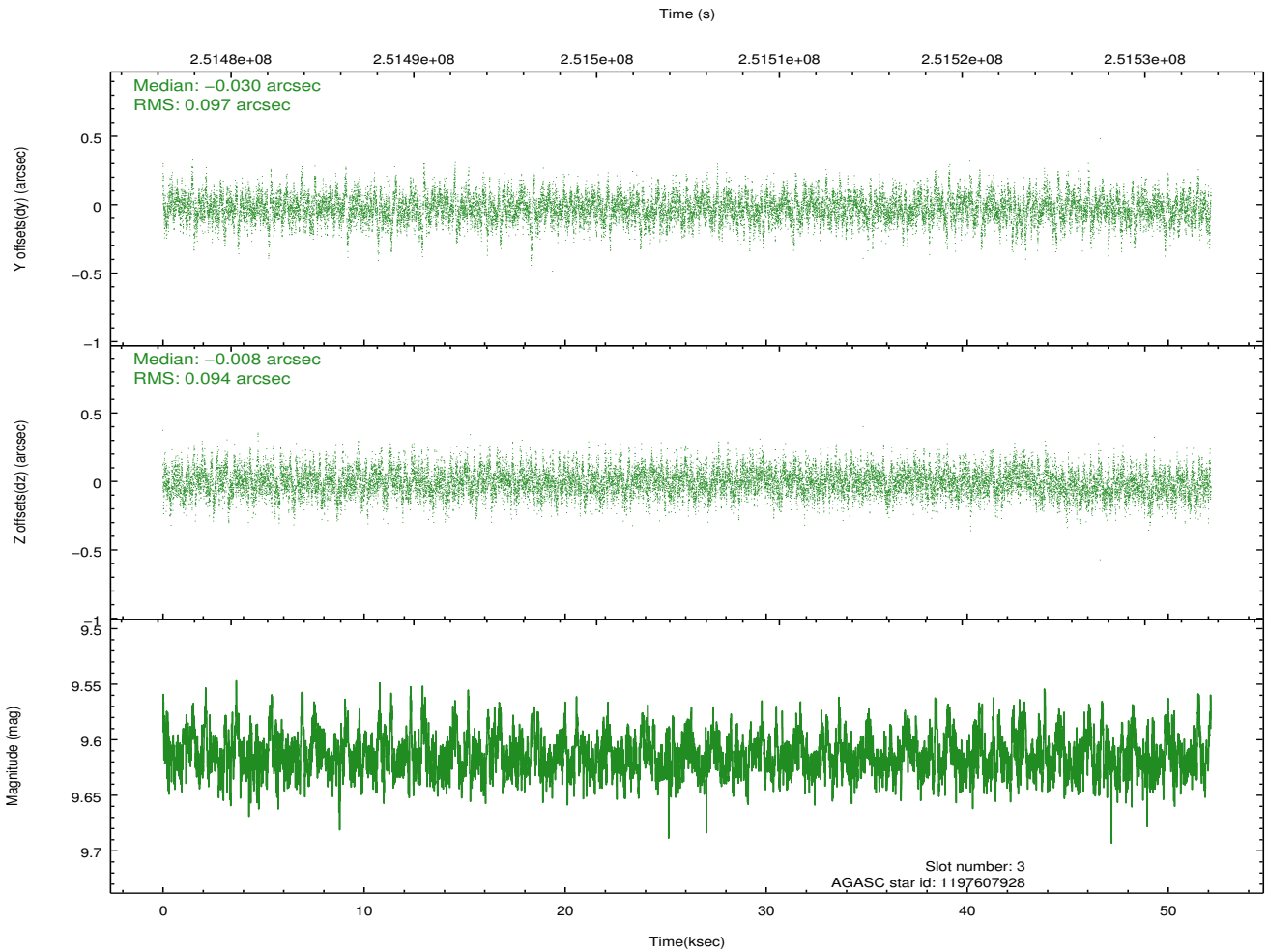
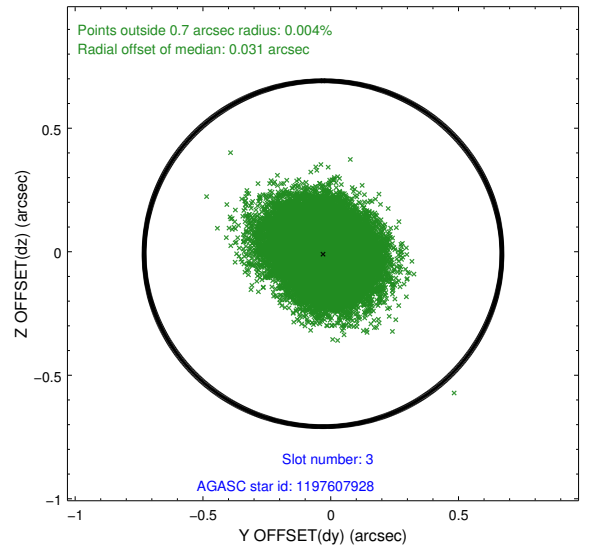
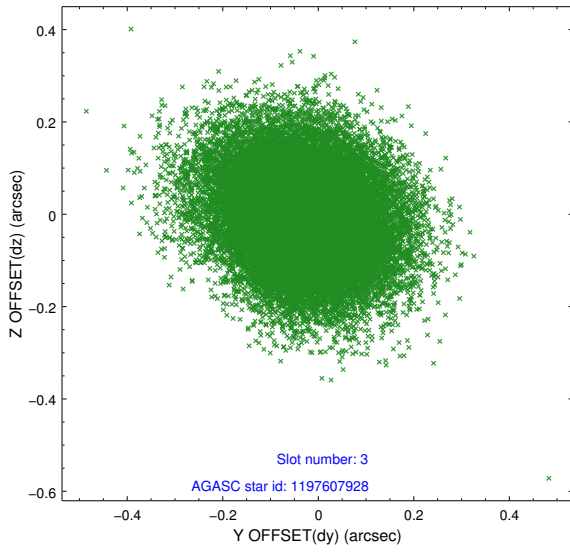
Slot Statistics

slot	status	id	mag	n_pts	med_dy	med_dz	dr1	dr2	ra	dec	mean_y	mean_z
0	FID	HRC-S-1	7.02	12713	0.147	-0.178	0.022	0.034	0.000000	0.000000	-1163.21	-459.43
1	FID	HRC-S-2	7.02	12715	0.140	-0.112	0.007	0.018	0.000000	0.000000	1236.35	-452.07
2	FID	HRC-S-3	7.03	12715	0.103	-0.012	0.027	0.042	0.000000	0.000000	-1165.86	570.22
3	GUIDE	1197607928	9.61	25401	-0.030	-0.008	0.143	0.235	7.837743	-72.165759	896.46	1910.84
4	GUIDE	1197620848	10.01	25315	-0.074	0.019	0.176	0.300	3.913465	-71.739620	-1672.35	-1949.77
5	BAD	1197635184	9.71	6	20.915	0.107	48.651	48.688	6.018453	-72.095535	-137.44	-274.49
6	GUIDE	1197621088	9.95	25398	-0.066	-0.003	0.170	0.276	3.823480	-72.180366	-143.86	-2387.80
7	GUIDE	1198000776	9.88	25328	0.168	-0.009	0.177	0.297	4.972441	-72.805451	2327.61	-1679.50

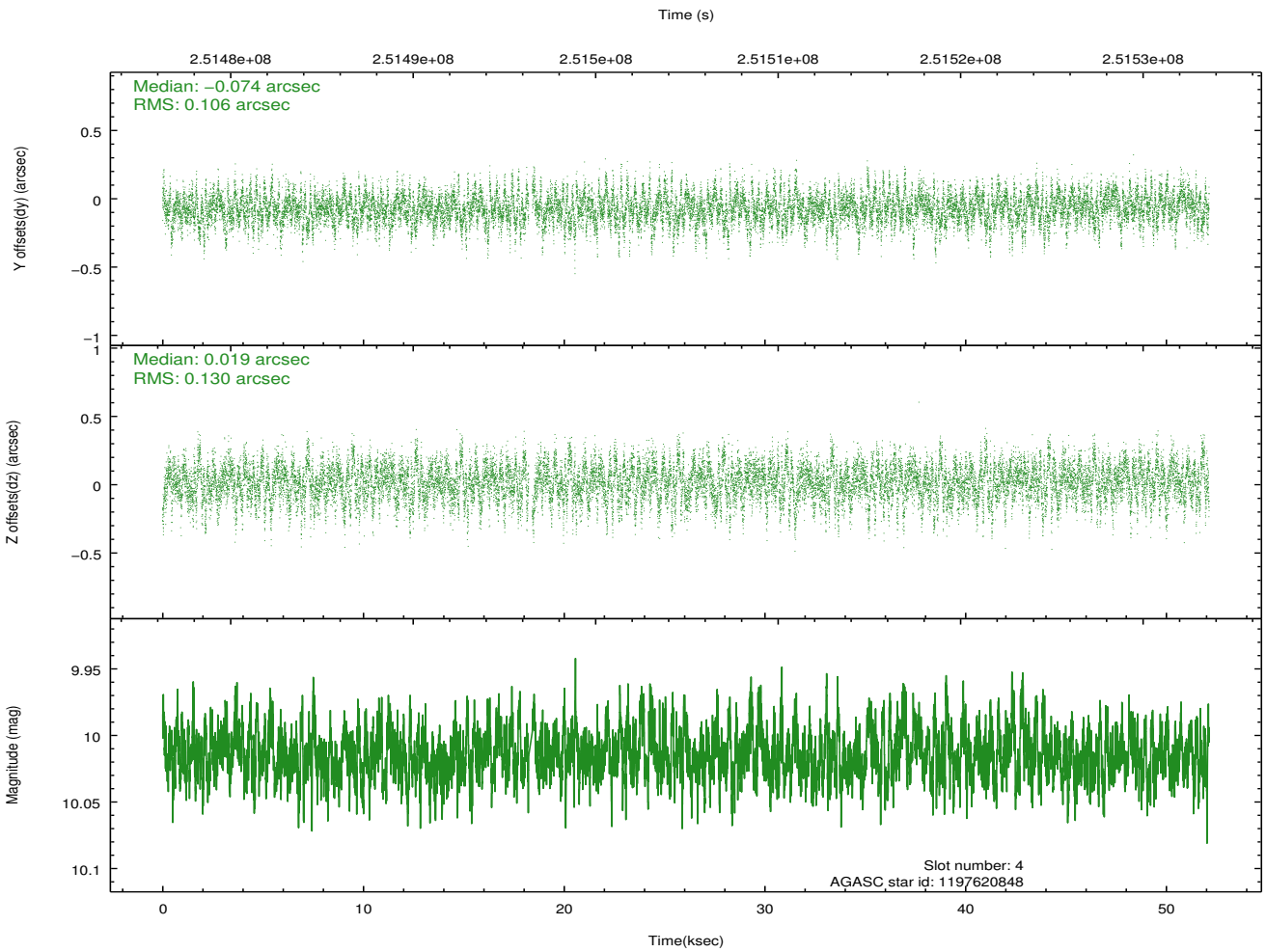
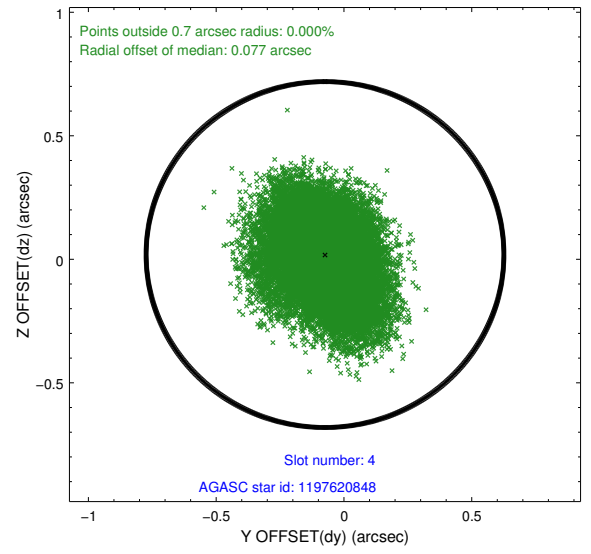
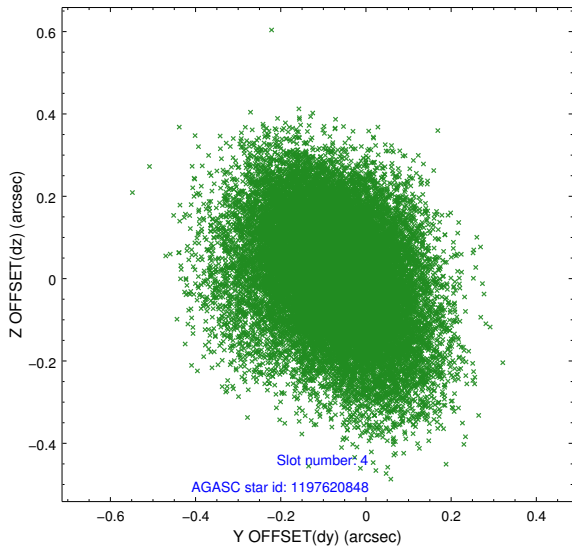
∞

2.4 Star Slots

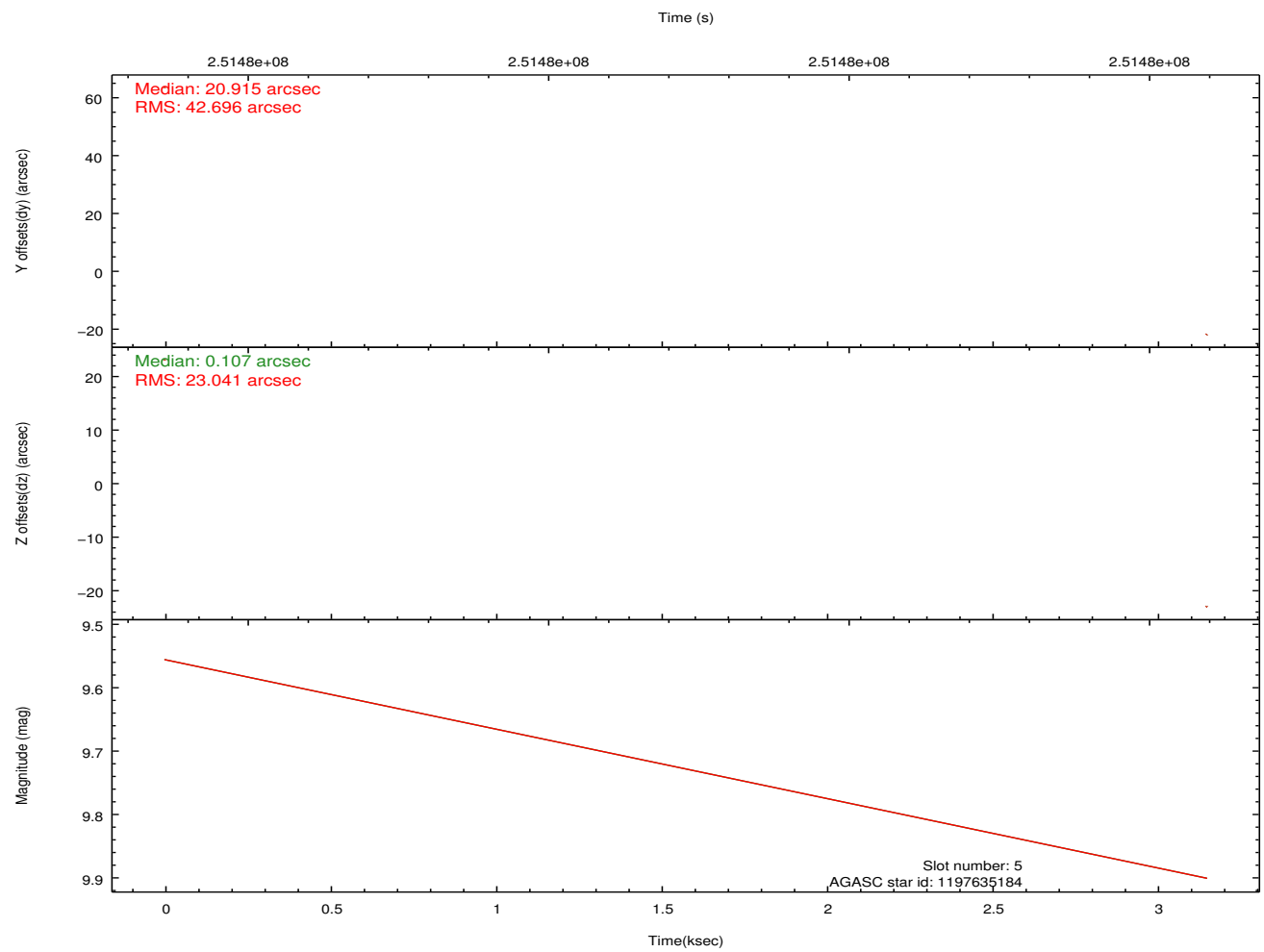
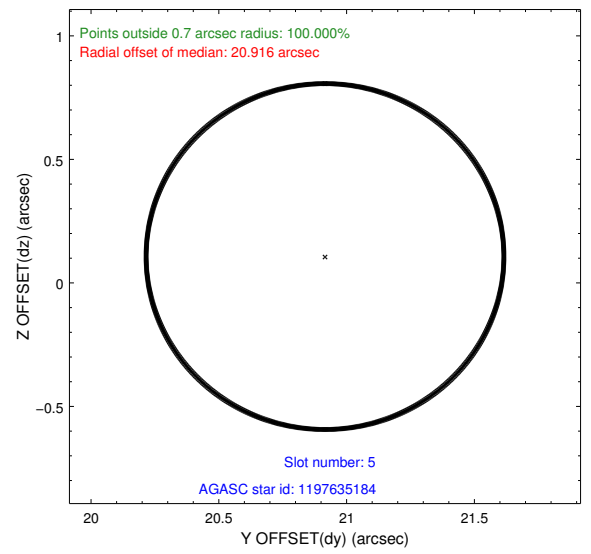
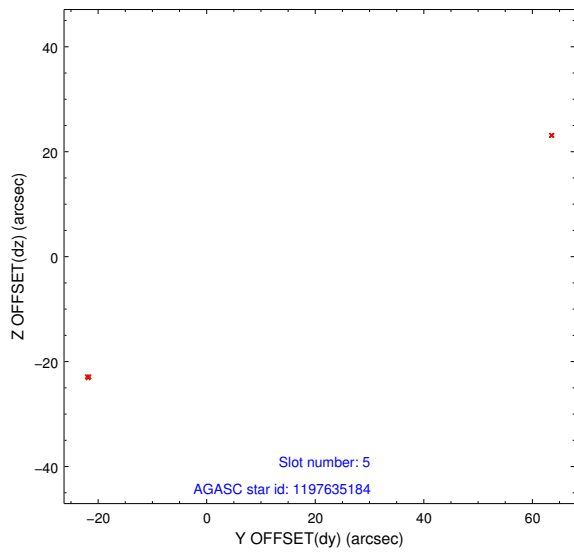
2.4.1 Slot 3



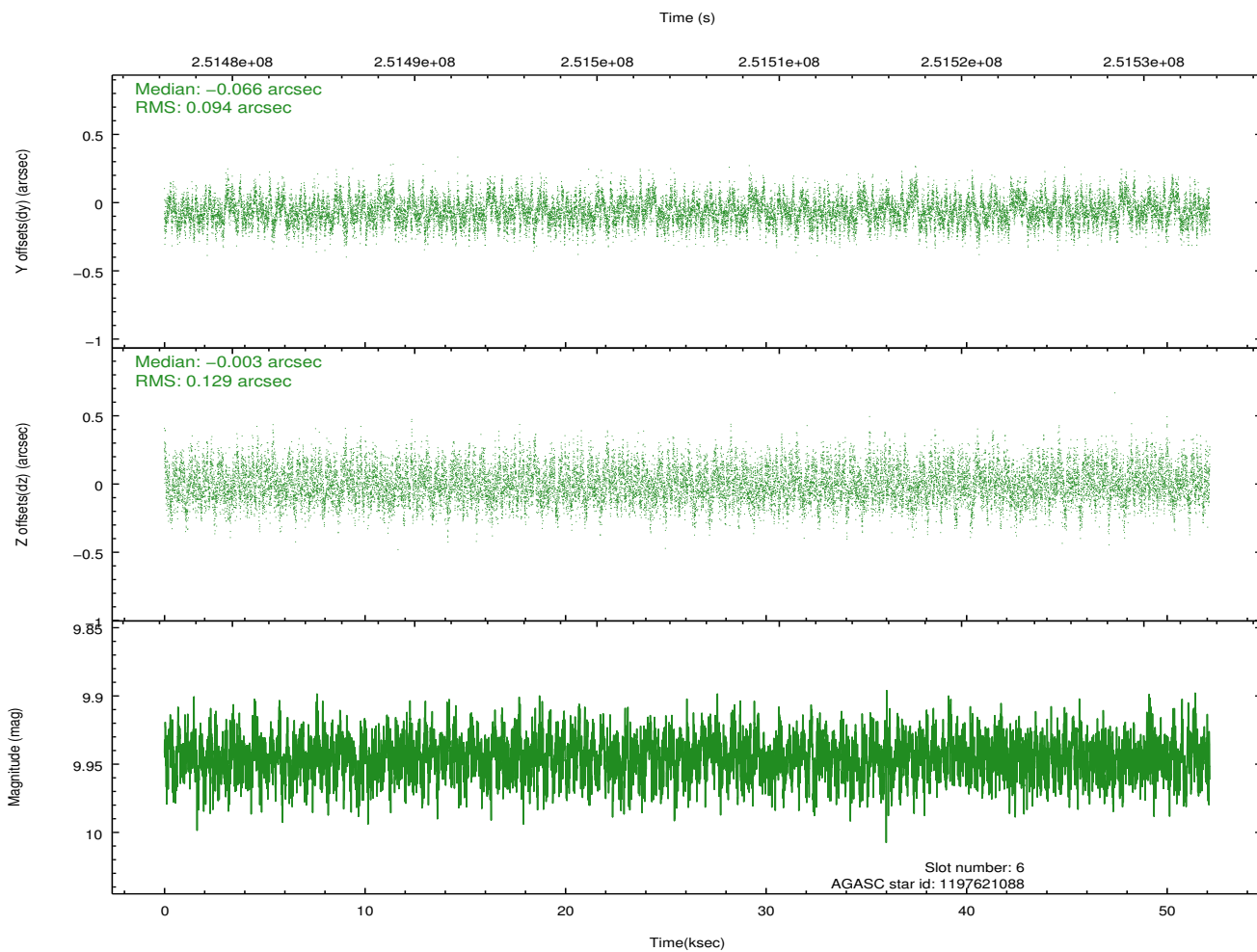
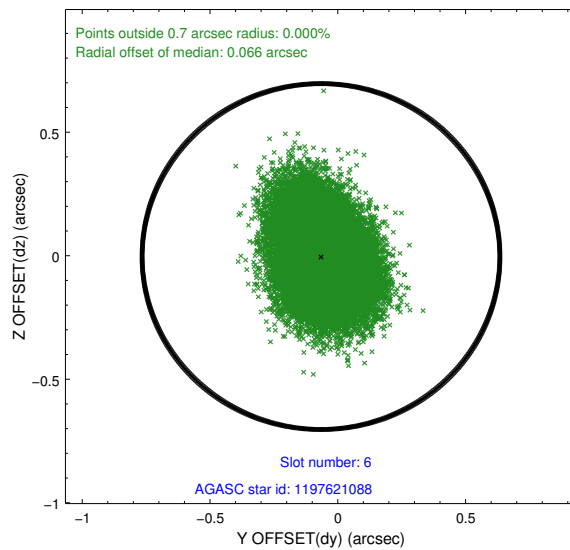
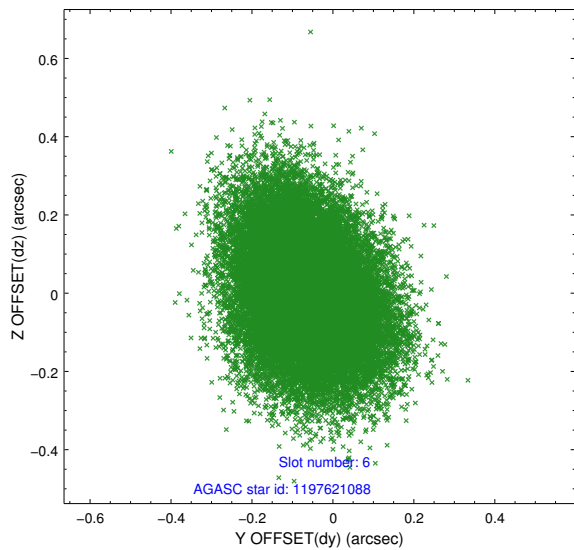
2.4.2 Slot 4



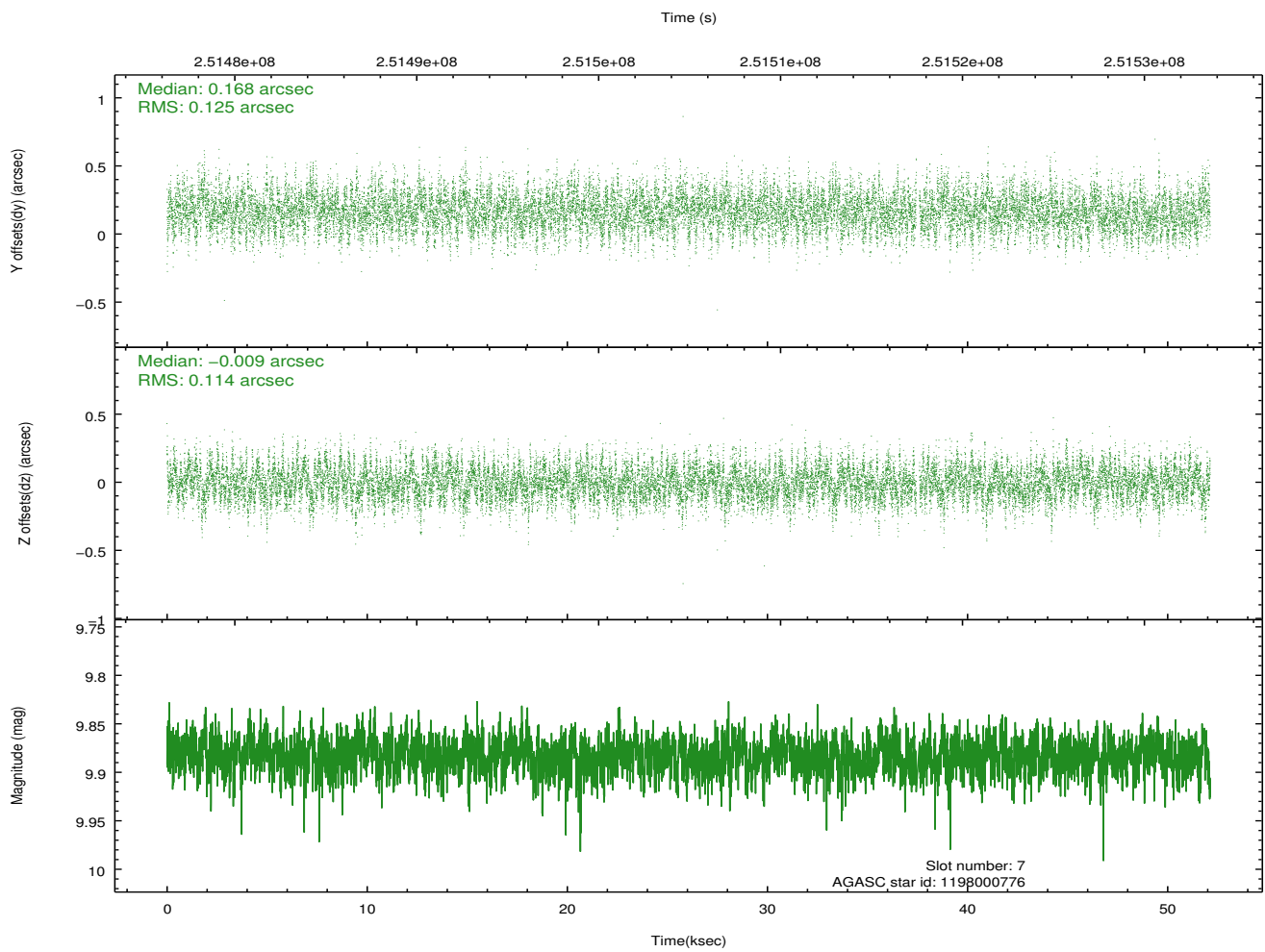
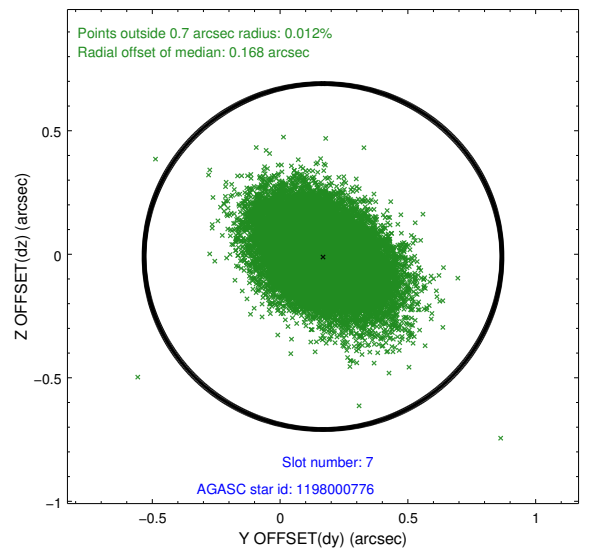
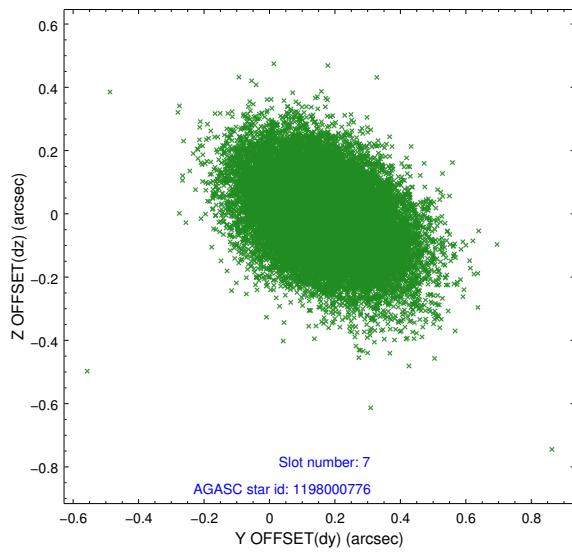
2.4.3 Slot 5



2.4.4 Slot 6

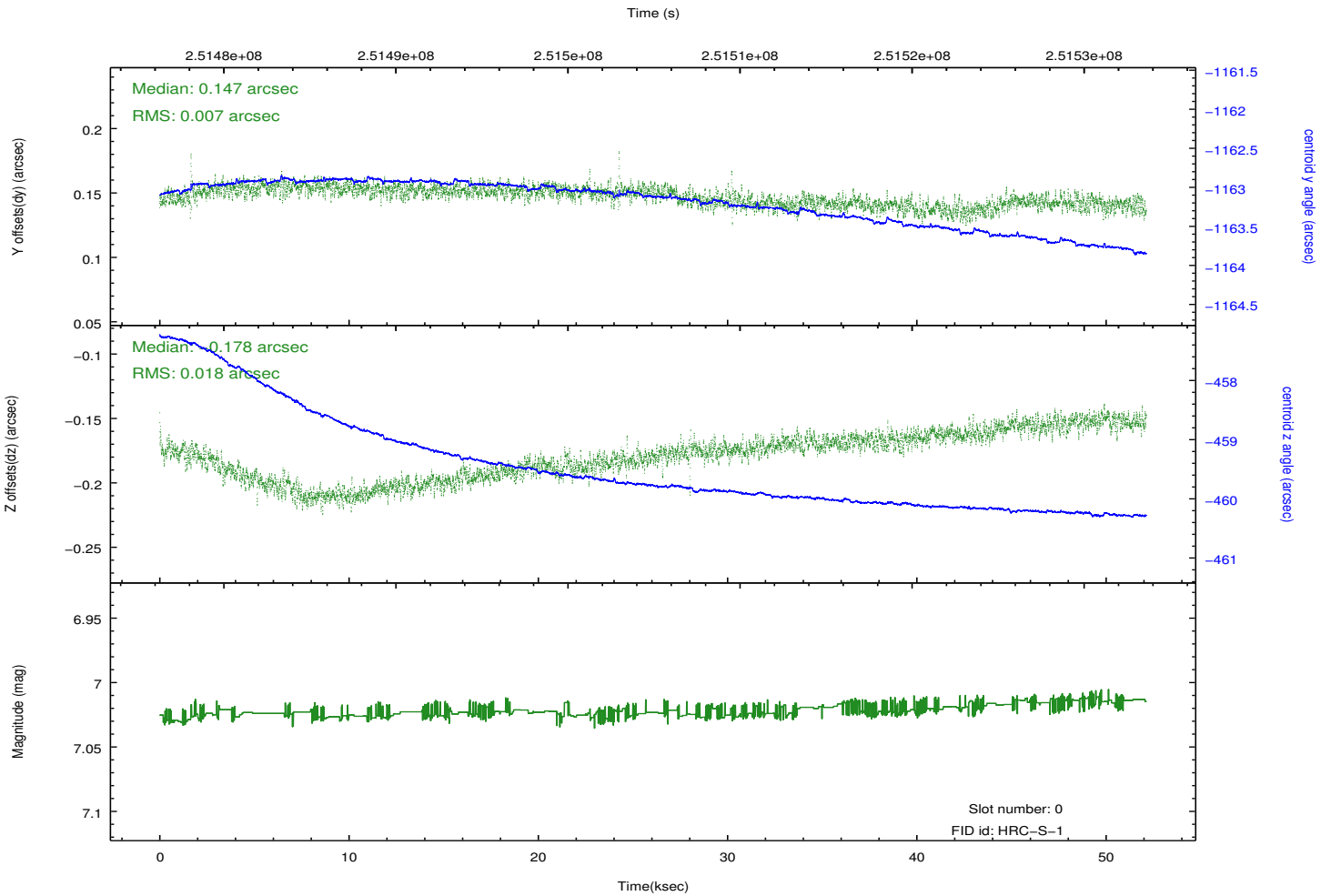
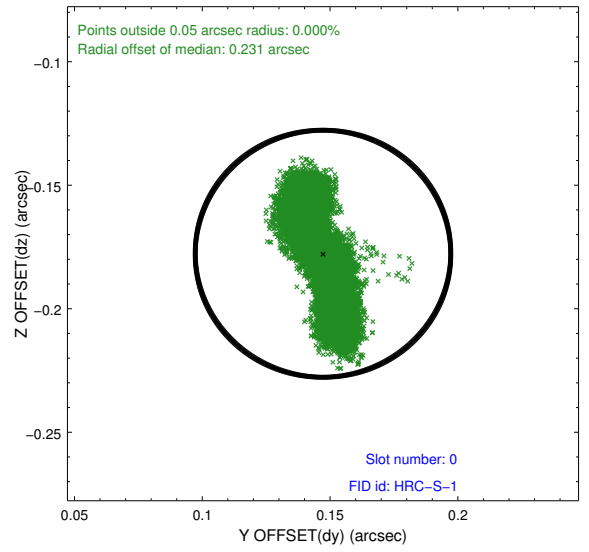
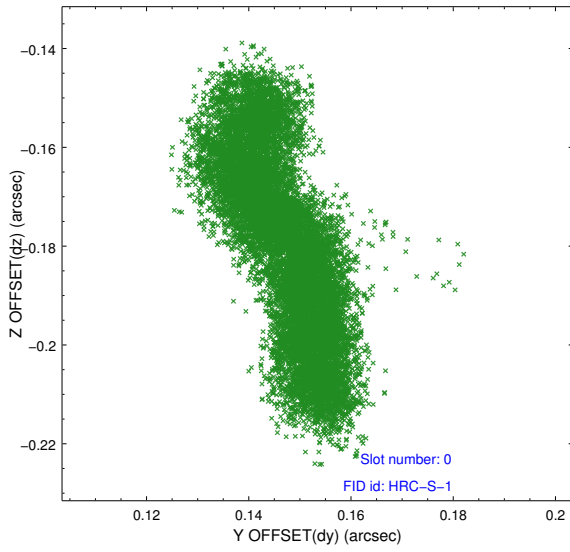


2.4.5 Slot 7

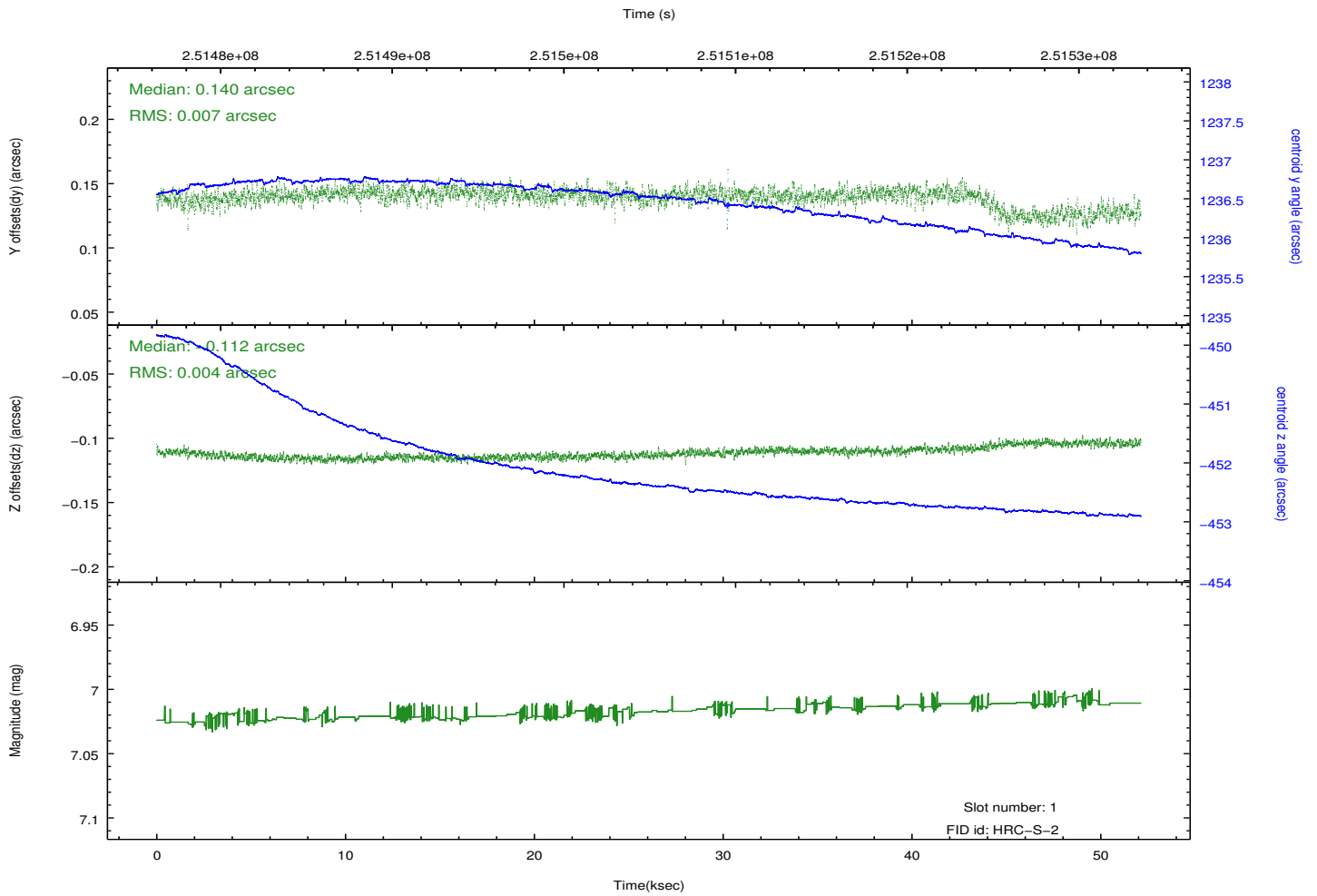
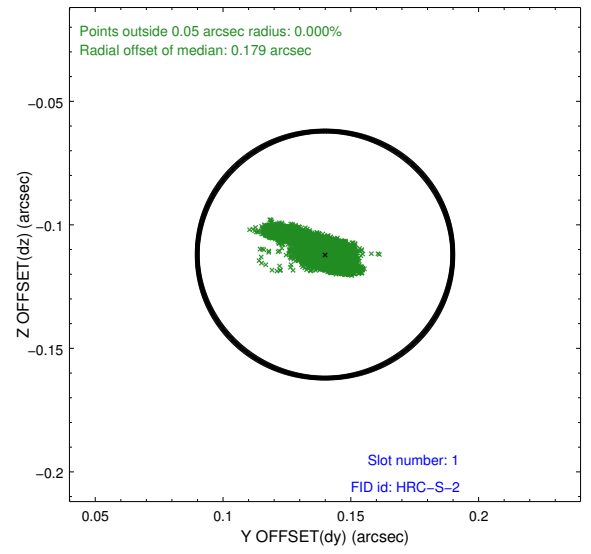
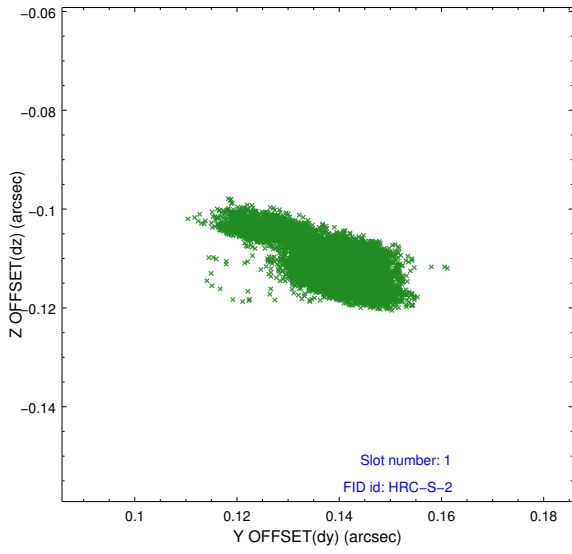


2.5 FID Slots

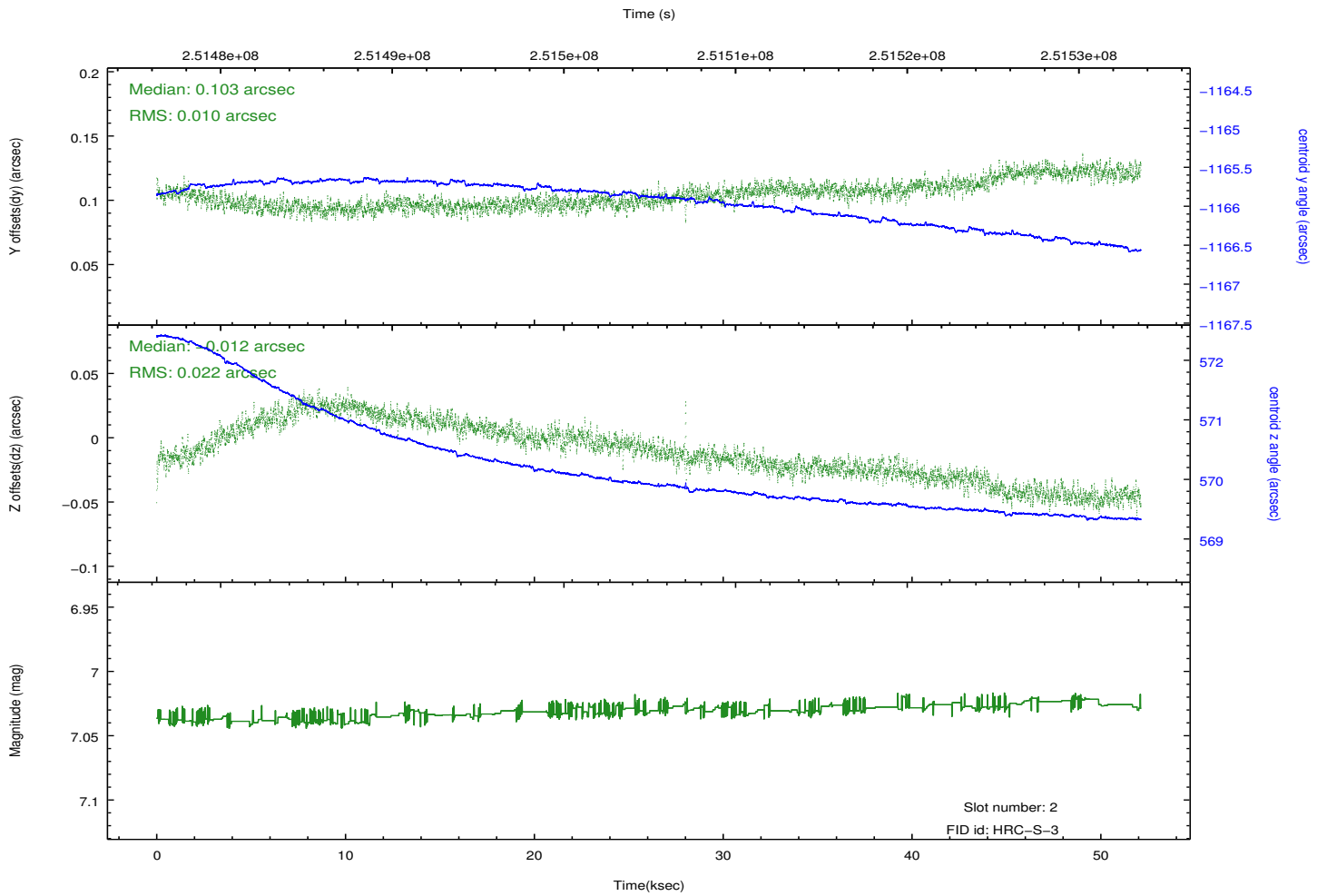
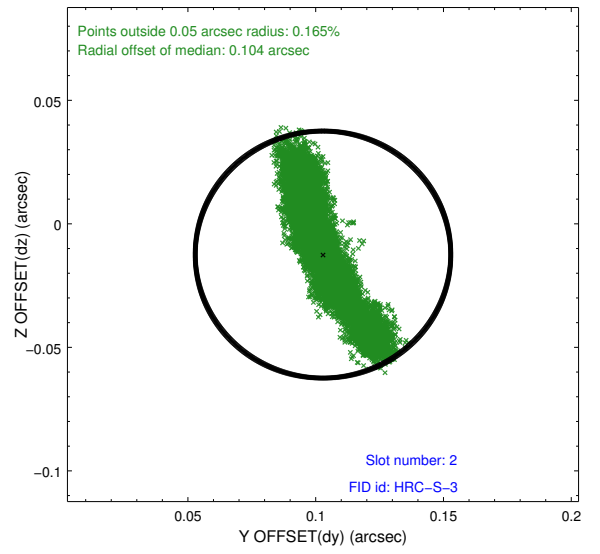
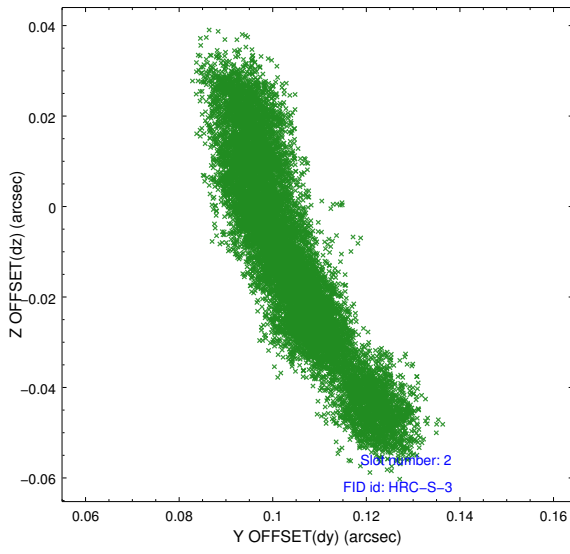
2.5.1 Slot 0



2.5.2 Slot 1



2.5.3 Slot 2



A Summary

A.1 Status

V&V Scientist	Beth Sundheim
V&V Date (YYYY-MM-DD)	2013.07.05
V&V Edition	1
V&V Disposition and Status	OK
V&V Charge Time	51.3935

A.2 Comments