

V&V Reference Report

L2 ASCDS Version : 8.5.1

Observation 5613 - L2 Version 3
Chandra X-Ray Center

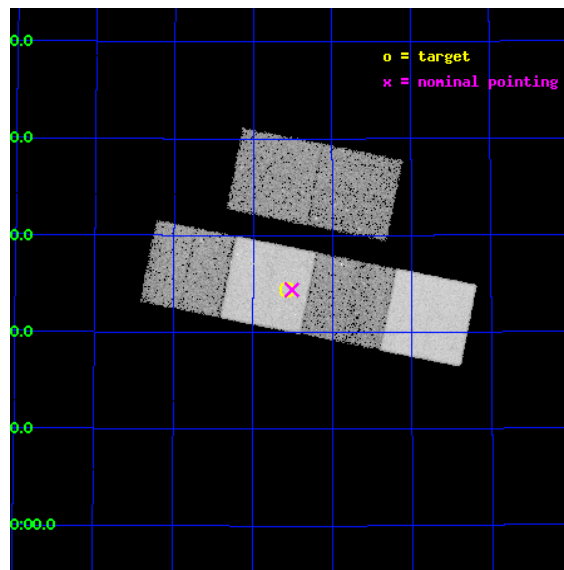
L2 Processing Date : Dec 17 2012

Contents

1	Front	2
2	OBI	3
2.1	OBI	3
2.1.1	Images	3
2.1.2	Bias	3
2.1.3	Parameters	4
2.1.4	Events	4
2.2	Compared Parameters	5
2.3	Aspect	6
2.4	Star Slots	9
2.4.1	Slot 3	9
2.4.2	Slot 4	10
2.4.3	Slot 5	11
2.4.4	Slot 6	12
2.4.5	Slot 7	13
2.5	FID Slots	14
2.5.1	Slot 0	14
2.5.2	Slot 1	15
2.5.3	Slot 2	16
A	Summary	17
A.1	Status	17
A.2	Comments	17

1 Front

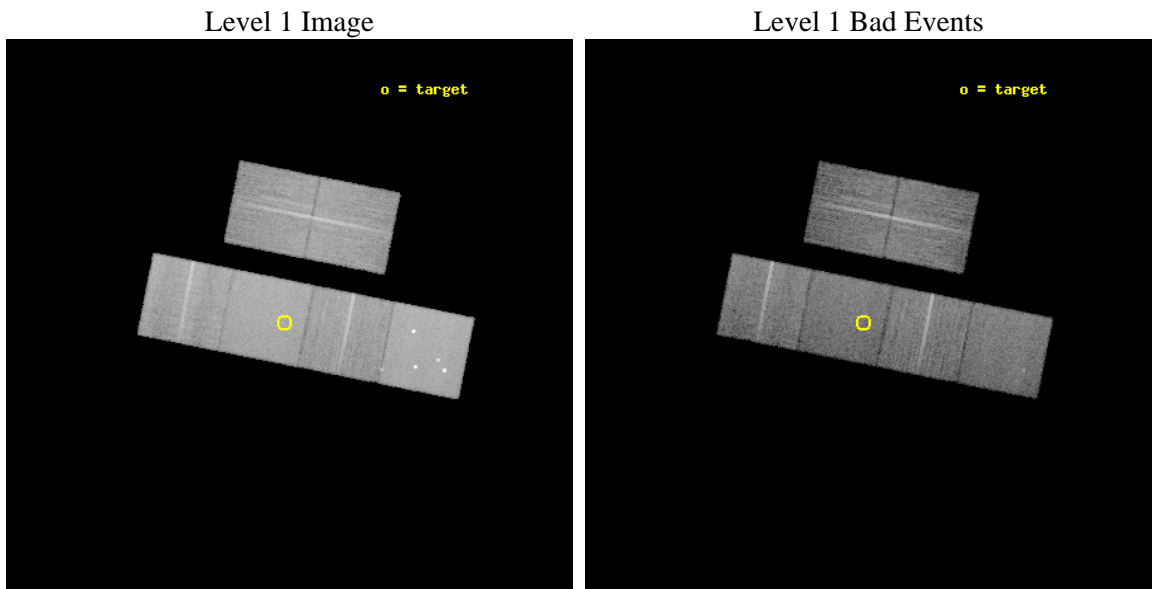
seq_num	701036	Sequence number
obs_id	5613	Observation id
title	A Chandra Survey of the Most Distant Quasars: X-raying the First Massive Black Holes	Proposal title
observer	Prof. William Brandt	Principal investigator
object	SDSS J0840+5624	Source name
dtcycle	0	
cycle	P	events from which exps? Prim/Second/Both
ra_targ	130.145	Observer's specified target RA [deg]
dec_targ	56.407	Observer's specified target Dec [deg]
ra_nom	130.12748740246	Nominal RA [deg]
dec_nom	56.40678503758	Nominal Dec [deg]
roll_nom	191.28279876608	Nominal Roll [deg]
revision	3	Processing version of data
ontime	16047.460818291	Sum of GTIs [s]
livetime	15844.258206789	Livetime [s]
ontime2	16047.501858294	Sum of GTIs [s]
ontime3	16044.096708	Sum of GTIs [s]
ontime5	16047.419778287	Sum of GTIs [s]
ontime6	16047.378738284	Sum of GTIs [s]
ontime7	16047.460818291	Sum of GTIs [s]
ontime8	16047.296658307	Sum of GTIs [s]
l2events	187054	Number of level 2 events



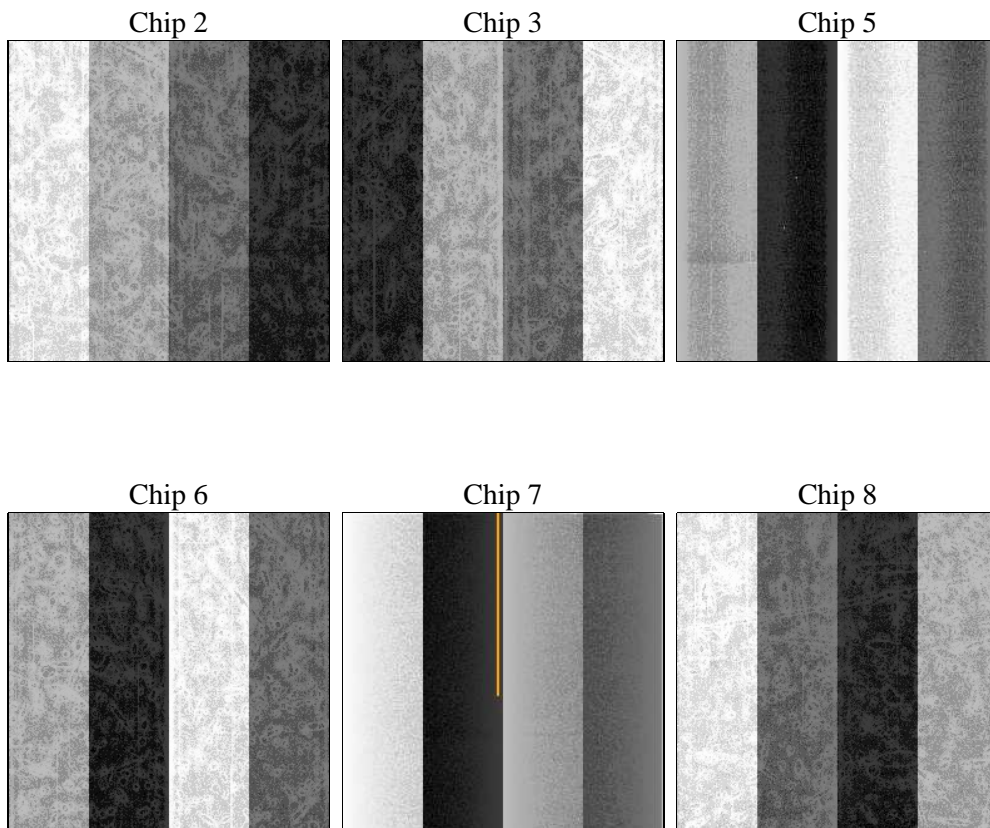
2 OBI

2.1 OBI

2.1.1 Images



2.1.2 Bias



2.1.3 Parameters

obi_num	0	Obi number	sched_exp_time	15900.000000	[s] Scheduled observation exposure time
ascdsver	8.5.1	Processing system revision	ontime	16047.460818291	Sum of GTIs [s]
caldbver	4.5.5	 	ontime2	16047.501858294	Sum of GTIs [s]
date	2012-12-17T02:30:48	Date and time of file creation	ontime3	16044.096708	Sum of GTIs [s]
revision	3	Processing version of data	ontime5	16047.419778287	Sum of GTIs [s]
			ontime6	16047.378738284	Sum of GTIs [s]
			ontime7	16047.460818291	Sum of GTIs [s]
			ontime8	16047.296658307	Sum of GTIs [s]
			l1events	847437	Number of level 1 events

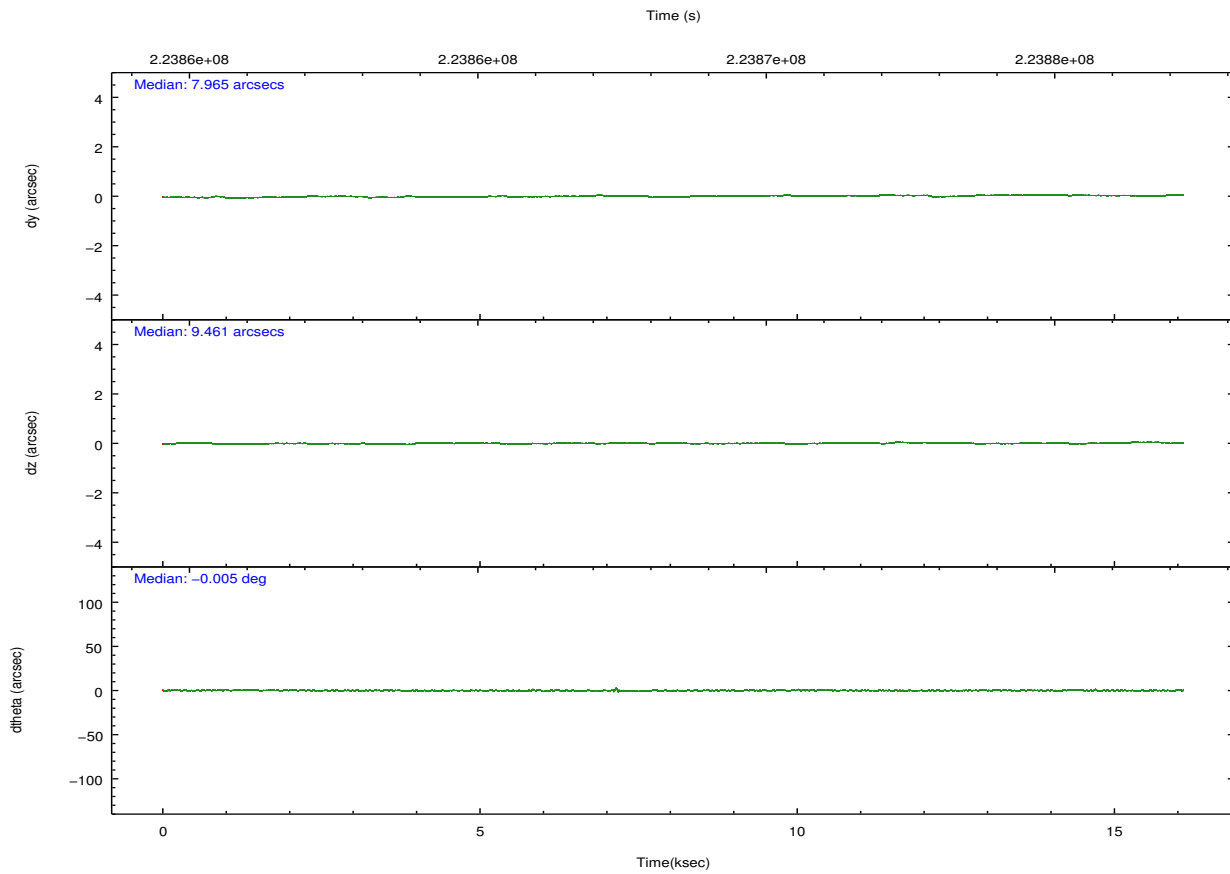
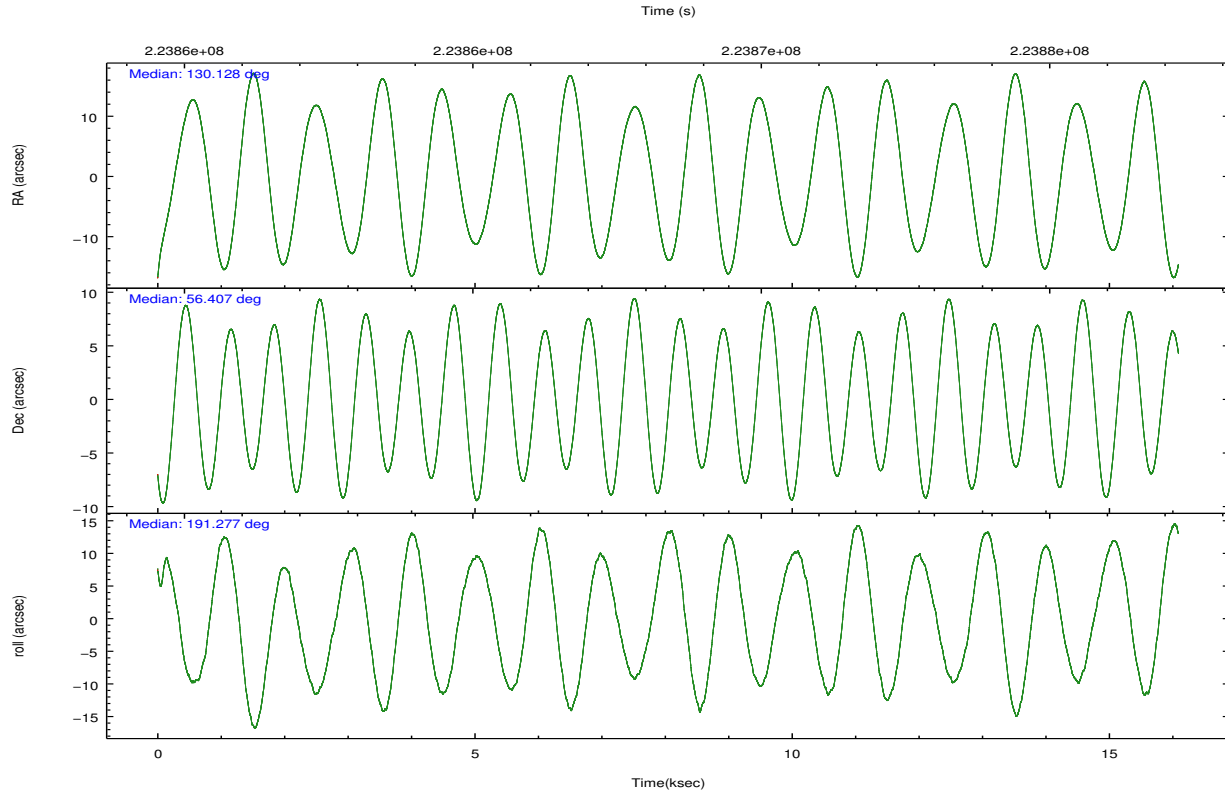
2.1.4 Events

	ccd 2	ccd 3	ccd 5	ccd 6	ccd 7	ccd 8		ccd 2	ccd 3	ccd 5	ccd 6	ccd 7	ccd 8
level 1 events	124579	112992	182883	122430	158574	145979	grade 0 events	5904	5906	15316	5471	5654	10425
rejected events	110882	99384	95273	108481	93806	114032		4%	5%	8%	4%	3%	7%
rejected %	89%	87%	52%	88%	59%	78%	grade 1 events	72	66	446	61	154	94
								0%	0%	0%	0%	0%	0%
							grade 2 events	2926	2640	24454	3013	12873	7039
								2%	2%	13%	2%	8%	4%
							grade 3 events	1216	1293	2830	1288	5674	3419
								0%	1%	1%	1%	3%	2%
							grade 4 events	1288	1311	2674	1289	5498	3153
								1%	1%	1%	1%	3%	2%
							grade 5 events	4624	5233	12234	5385	14804	7174
								3%	4%	6%	4%	9%	4%
							grade 6 events	2368	2463	42368	2893	35087	7921
								1%	2%	23%	2%	22%	5%
							grade 7 events	106181	94080	82561	103030	78830	106754
								85%	83%	45%	84%	49%	73%

2.2 Compared Parameters

Parameter	Planned	Actual	Parameter	Planned	Actual
Instrument	ACIS	ACIS	Obspar format version number	7	7
Detector	ACIS-235678	ACIS-235678	Obspar file type	PREDICTED	ACTUAL
Grating	NONE	NONE	Obspar update status	NONE	UPDATED
Data mode	FAINT	FAINT	Number of optional ACIS chips dropped	0	0
Observation mode	POINTING	POINTING	On-chip summing requested	N	N
[deg] Pointing RA	130.164087	130.1274874024588	Subarray requested	NONE	NONE
[deg] Pointing Dec	56.425040	56.40678503758049	Alternating exposures requested	N	N
[deg] Pointing Roll	191.095686	191.282798766076	[s] Primary exposure time	0.000000	3.2
[mm] SIM focus pos	-0.684267	-0.6828225247311905			
[mm] SIM defocus	0	0.001444936568705701			
[mm] SIM translation stage pos	-190.132523	-190.1425803651734			
[mm] SIM translation stage offset	0	0.01005778216563158			
[s] Observation start time (MET)	223860524.184000	223859461.33194			
Observation start date	2005-02-03T23:27:40	2005-02-03T23:11:01			
[s] Observation end time (MET)	223876424.184000	223876894.02023			
Observation end date	2005-02-04T03:52:40	2005-02-04T04:01:34			
Read mode	TIMED	TIMED			

2.3 Aspect

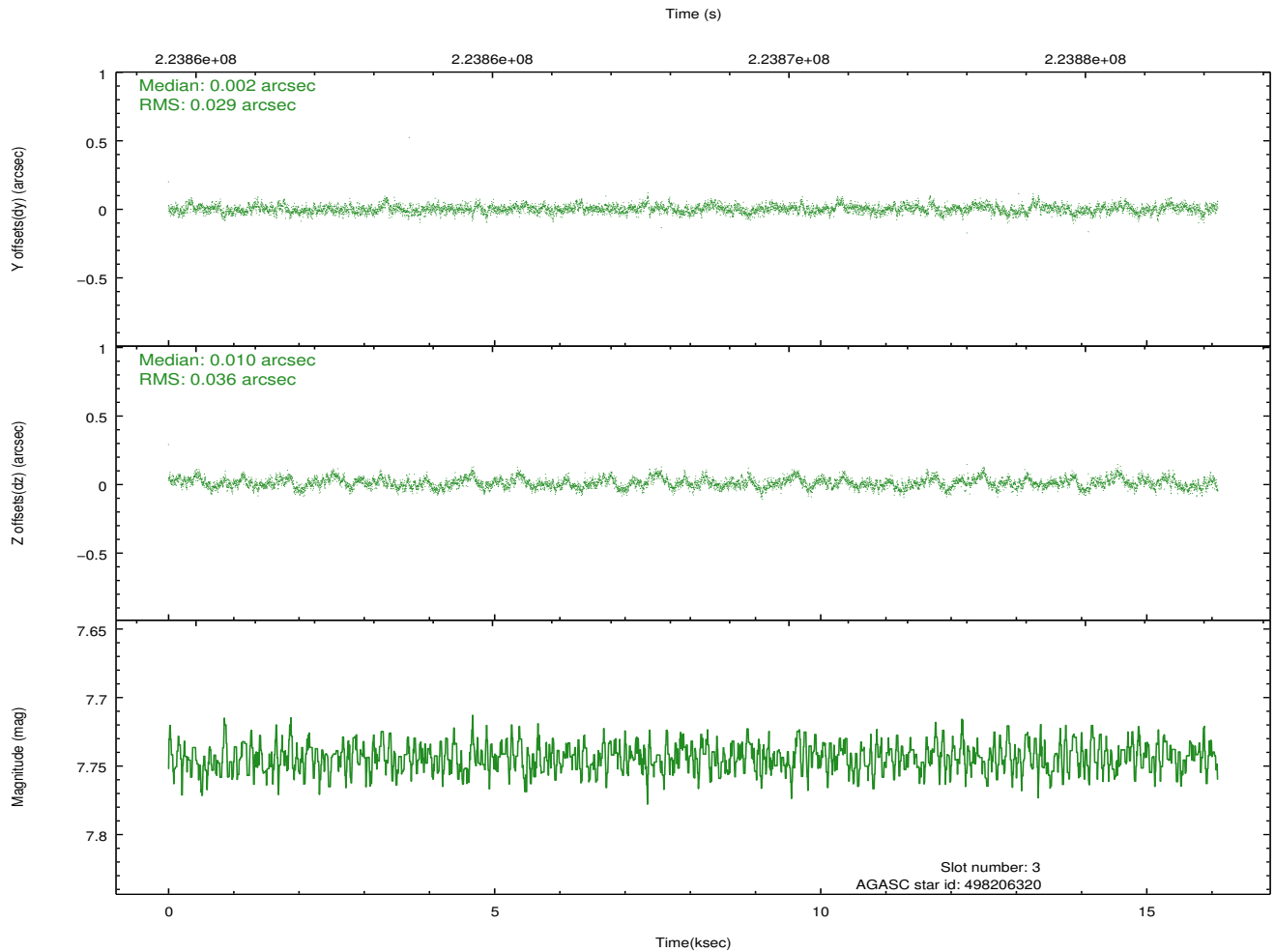
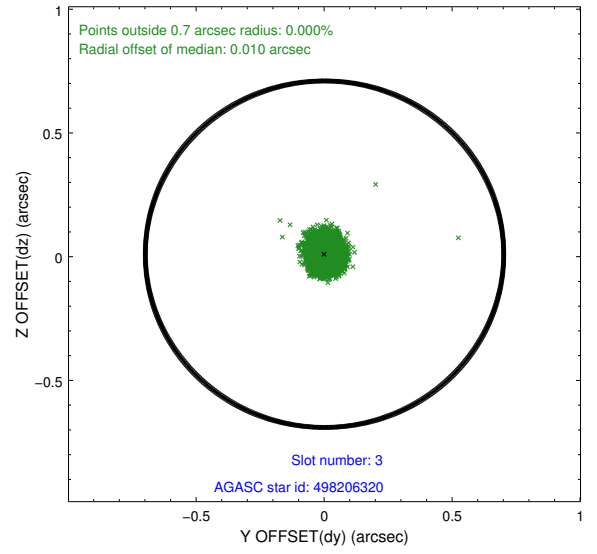
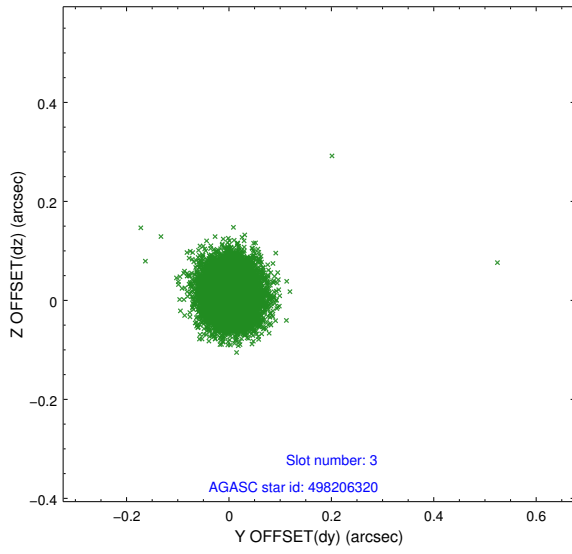


Slot Statistics

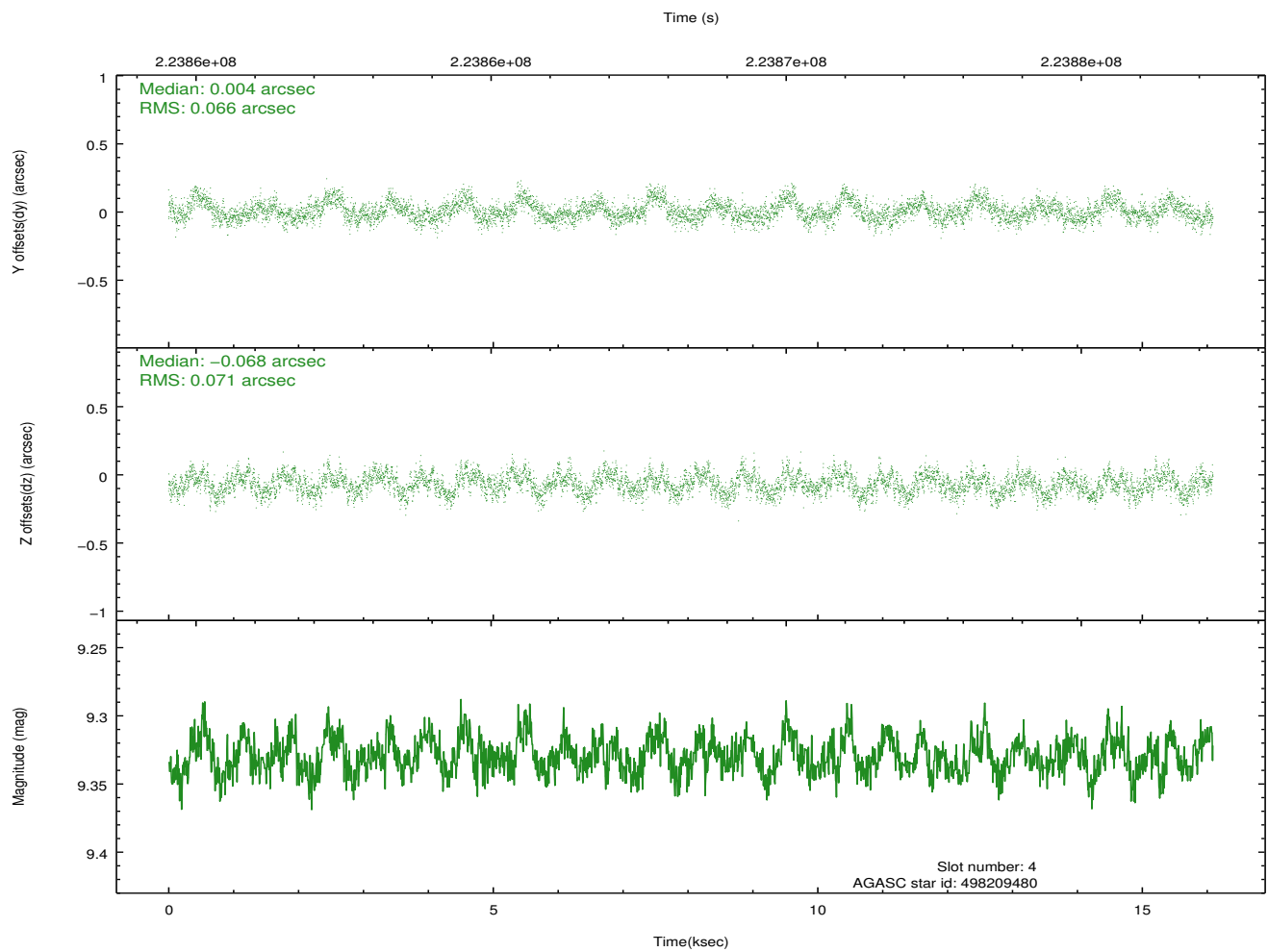
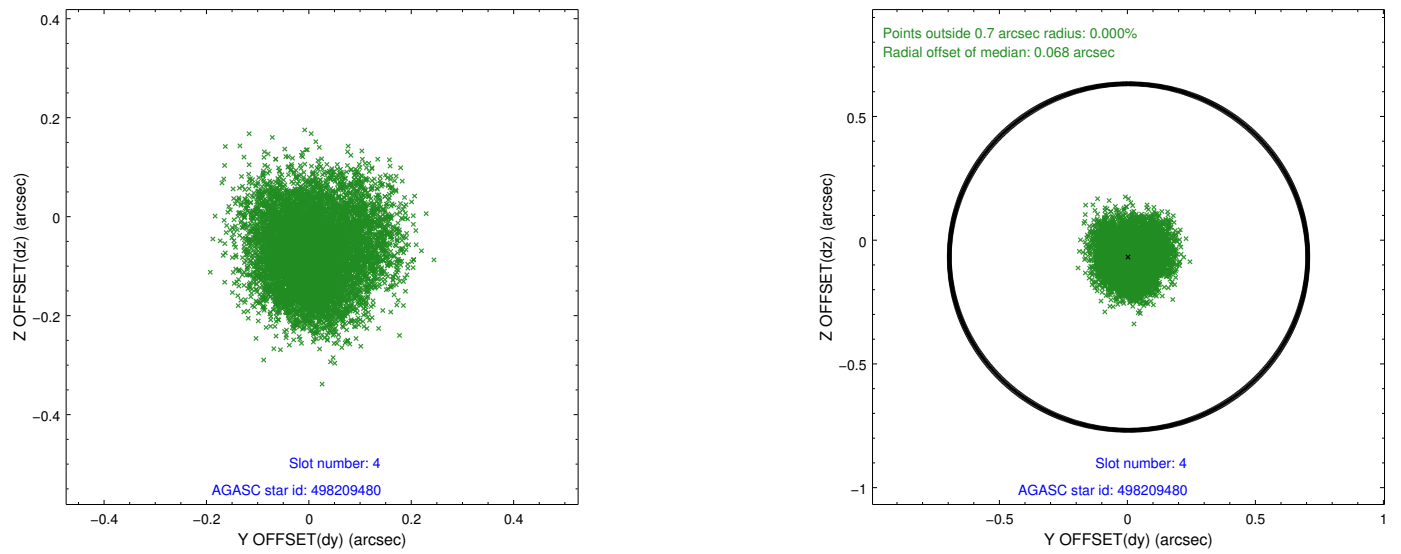
slot	status	id	mag	n_pts	med_dy	med_dz	dr1	dr2	ra	dec	mean_y	mean_z
0	FID	ACIS-S-2	7.11	3924	-0.031	-0.037	0.007	0.011	0.000000	0.000000	-760.74	-1730.69
1	FID	ACIS-S-4	7.21	3925	0.103	0.025	0.006	0.012	0.000000	0.000000	2152.51	177.62
2	FID	ACIS-S-5	7.24	3925	-0.104	0.021	0.007	0.012	0.000000	0.000000	-1813.34	171.53
3	GUIDE	498206320	7.74	7849	0.002	0.010	0.048	0.080	129.264284	55.839214	2188.49	1708.29
4	GUIDE	498209480	9.33	7844	0.004	-0.068	0.106	0.165	130.677043	56.388292	-978.00	322.99
5	GUIDE	498209904	9.40	7847	0.007	-0.015	0.087	0.141	130.595865	56.107689	-631.19	1285.24
6	GUIDE	498210008	9.59	7848	0.022	0.126	0.177	0.262	130.031703	56.476753	222.46	-233.07
7	GUIDE	498211200	9.09	7844	-0.044	-0.042	0.085	0.141	129.416191	56.796643	1188.22	-1604.16

2.4 Star Slots

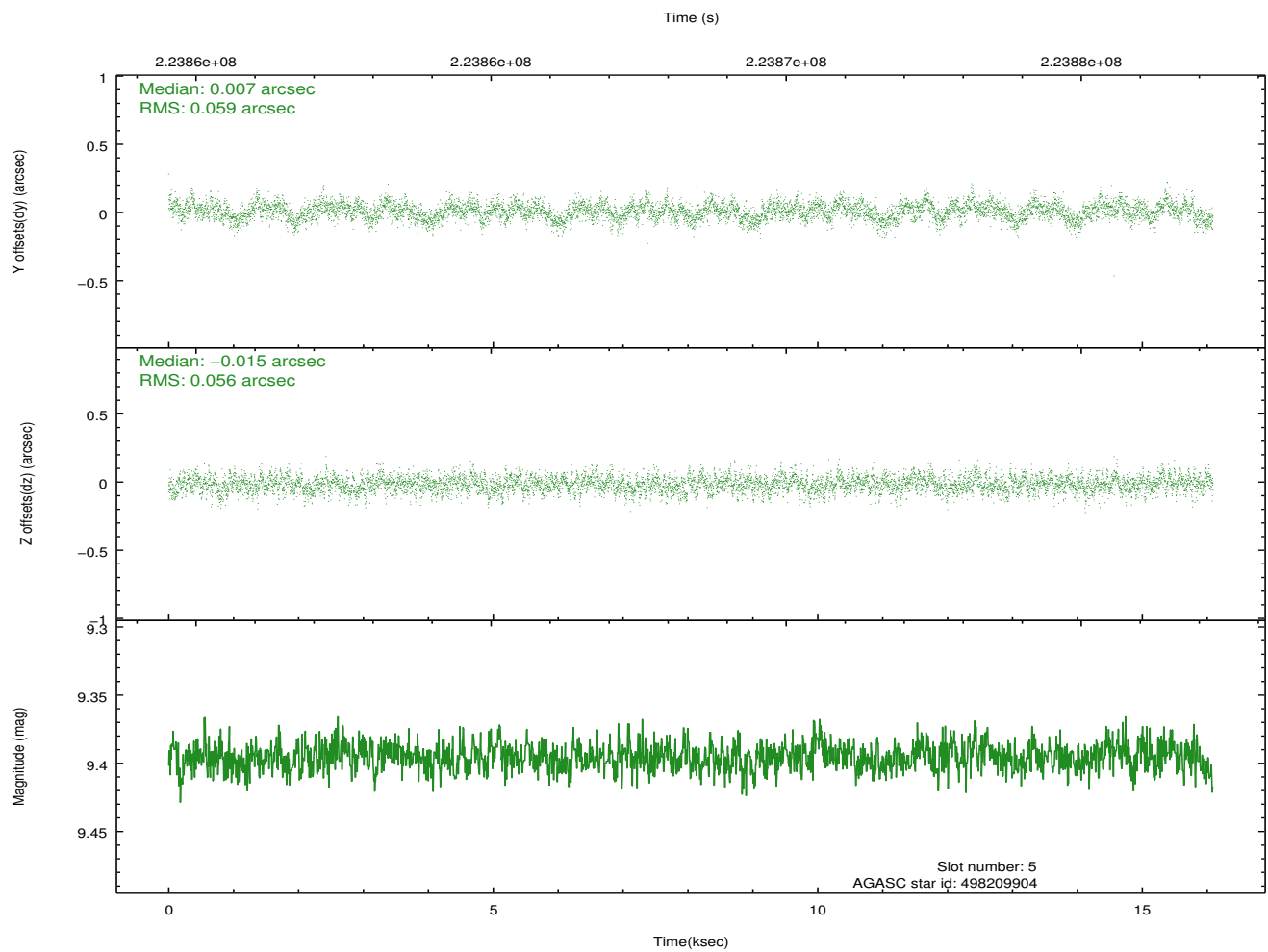
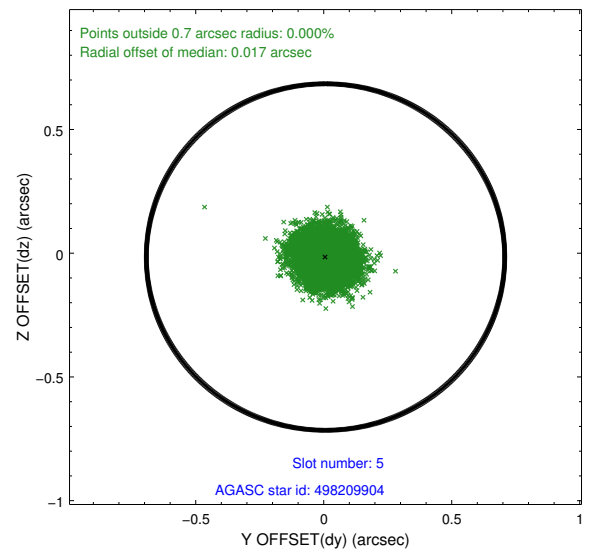
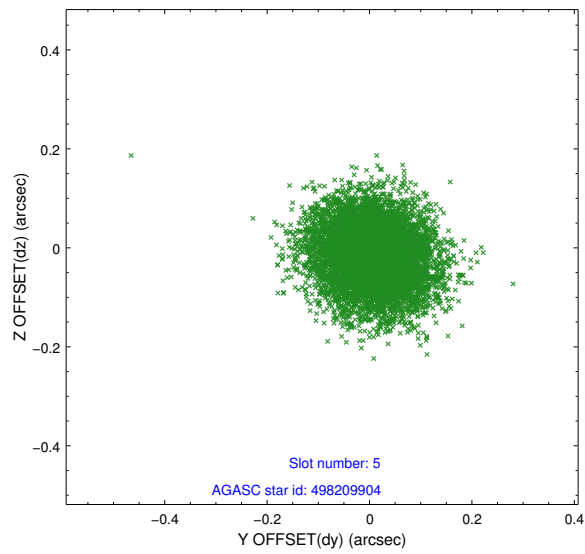
2.4.1 Slot 3



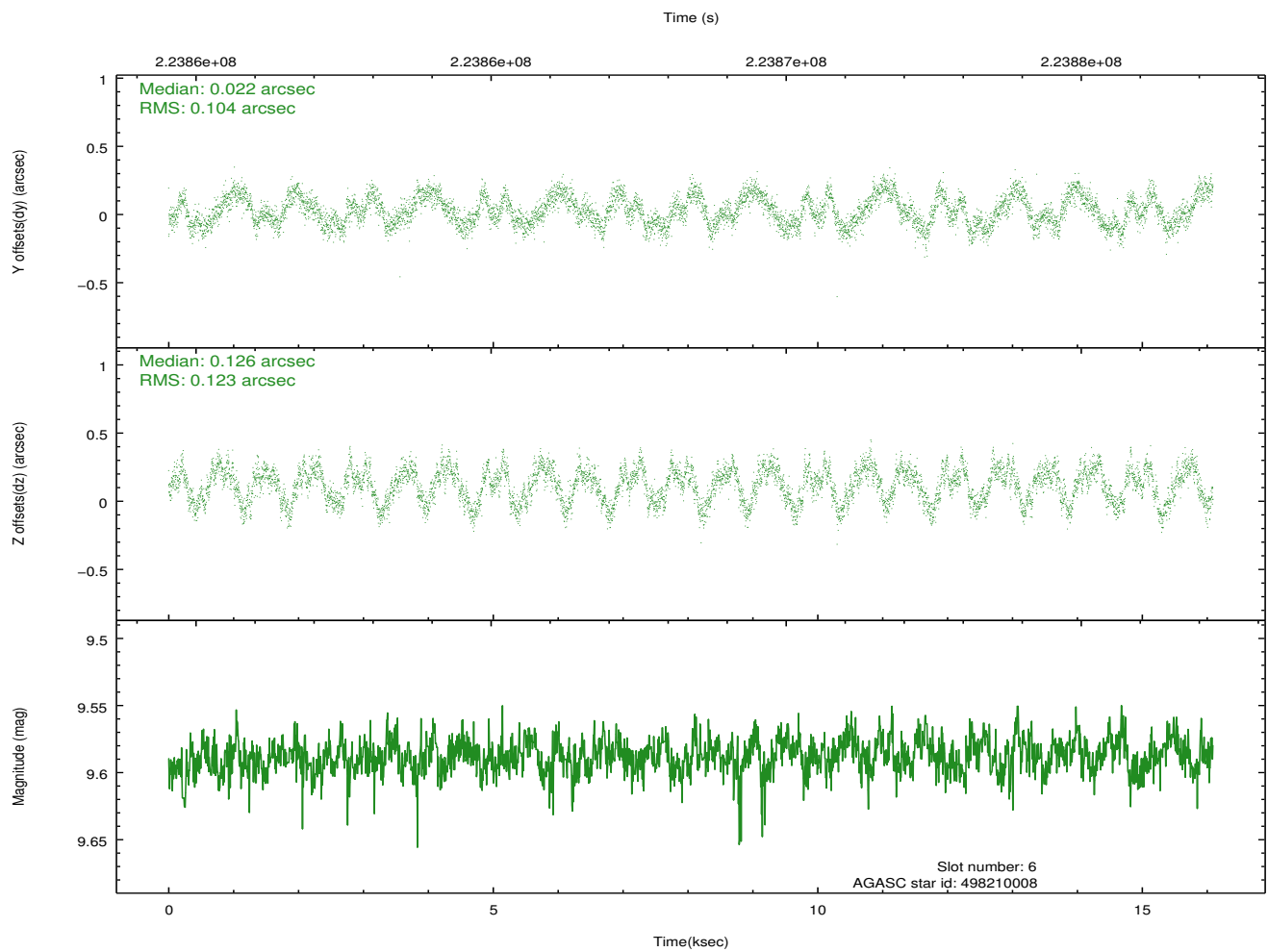
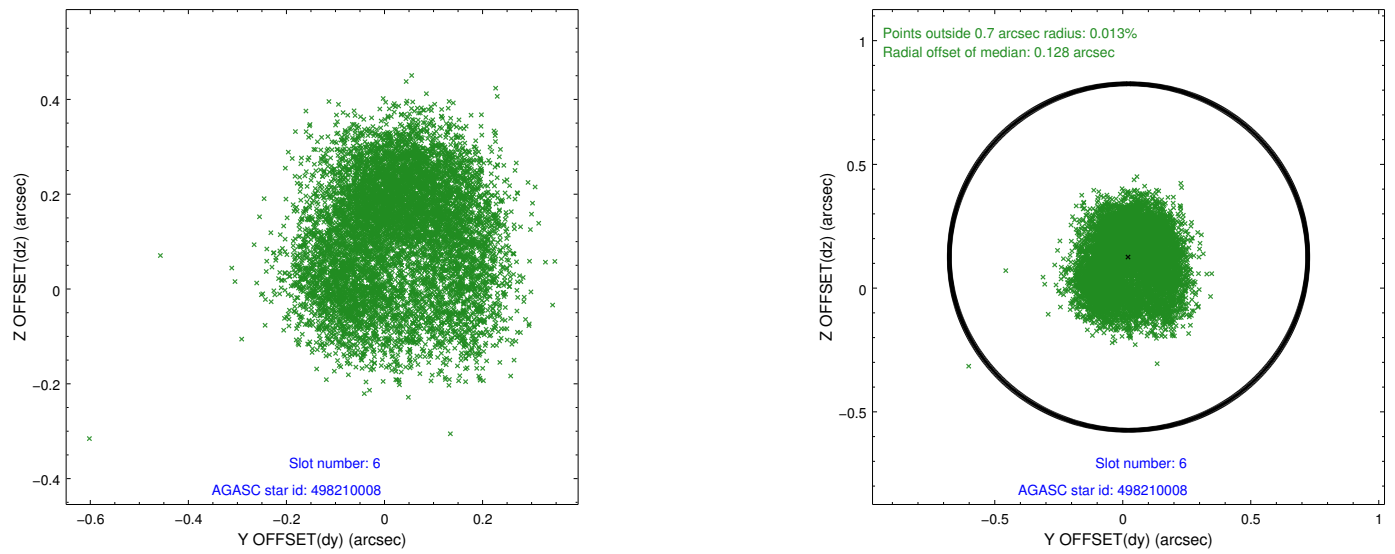
2.4.2 Slot 4



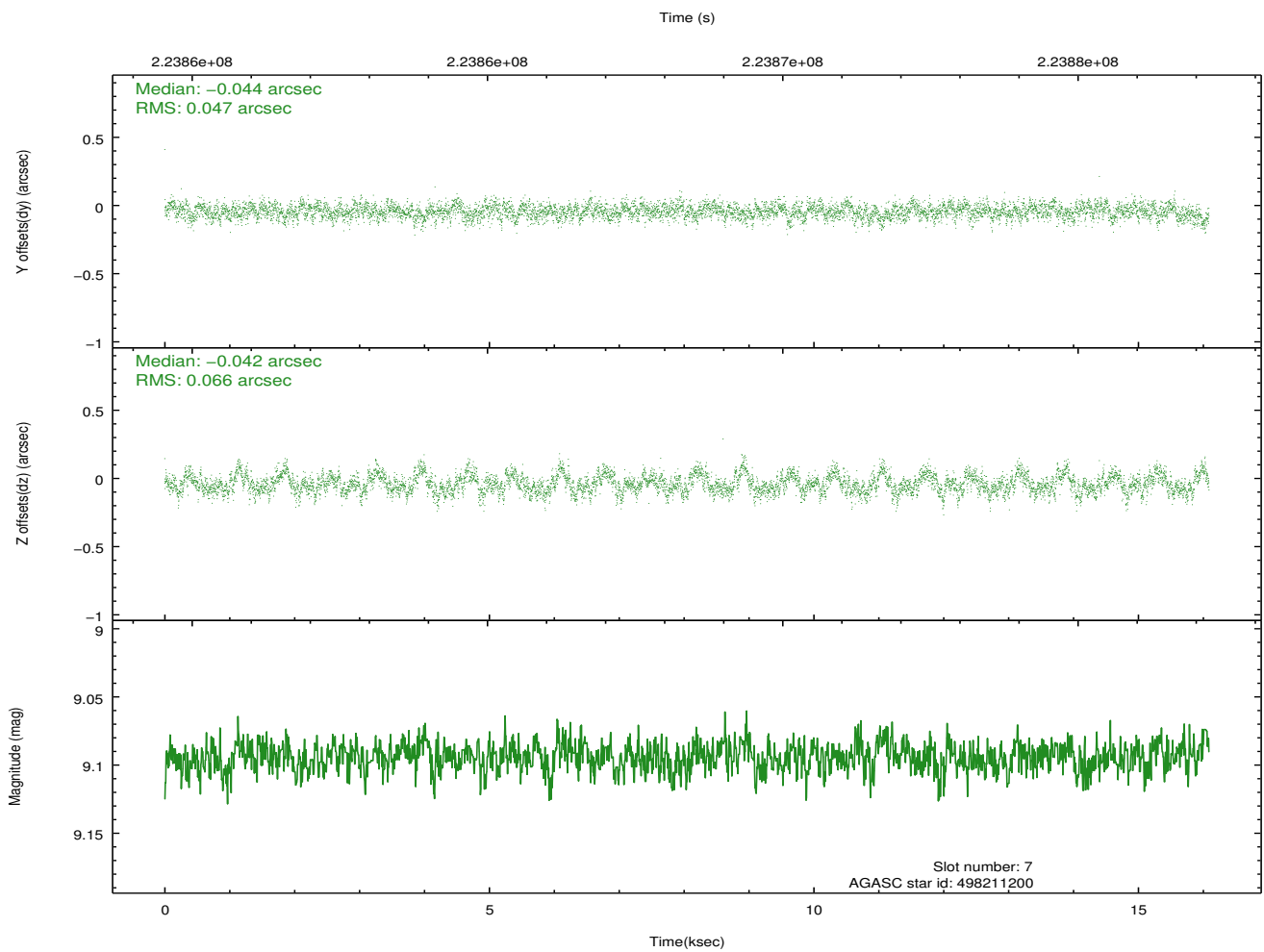
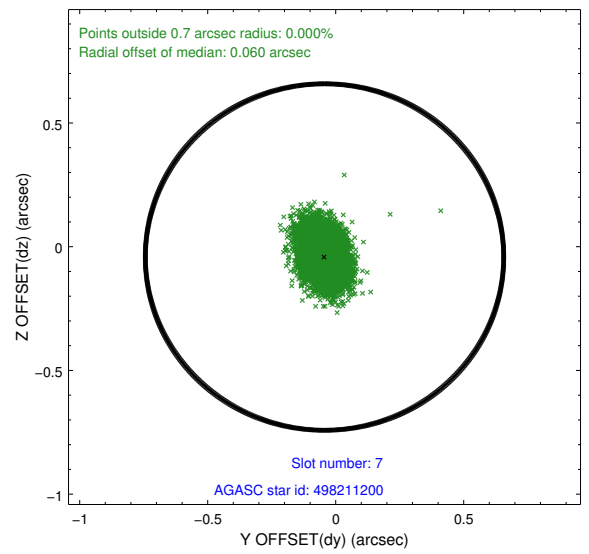
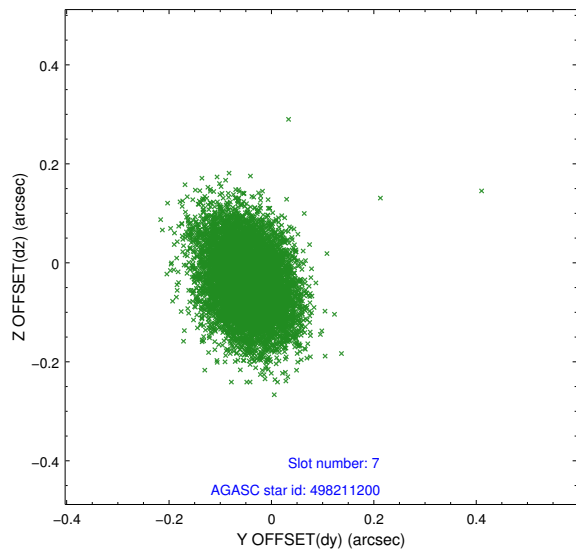
2.4.3 Slot 5



2.4.4 Slot 6

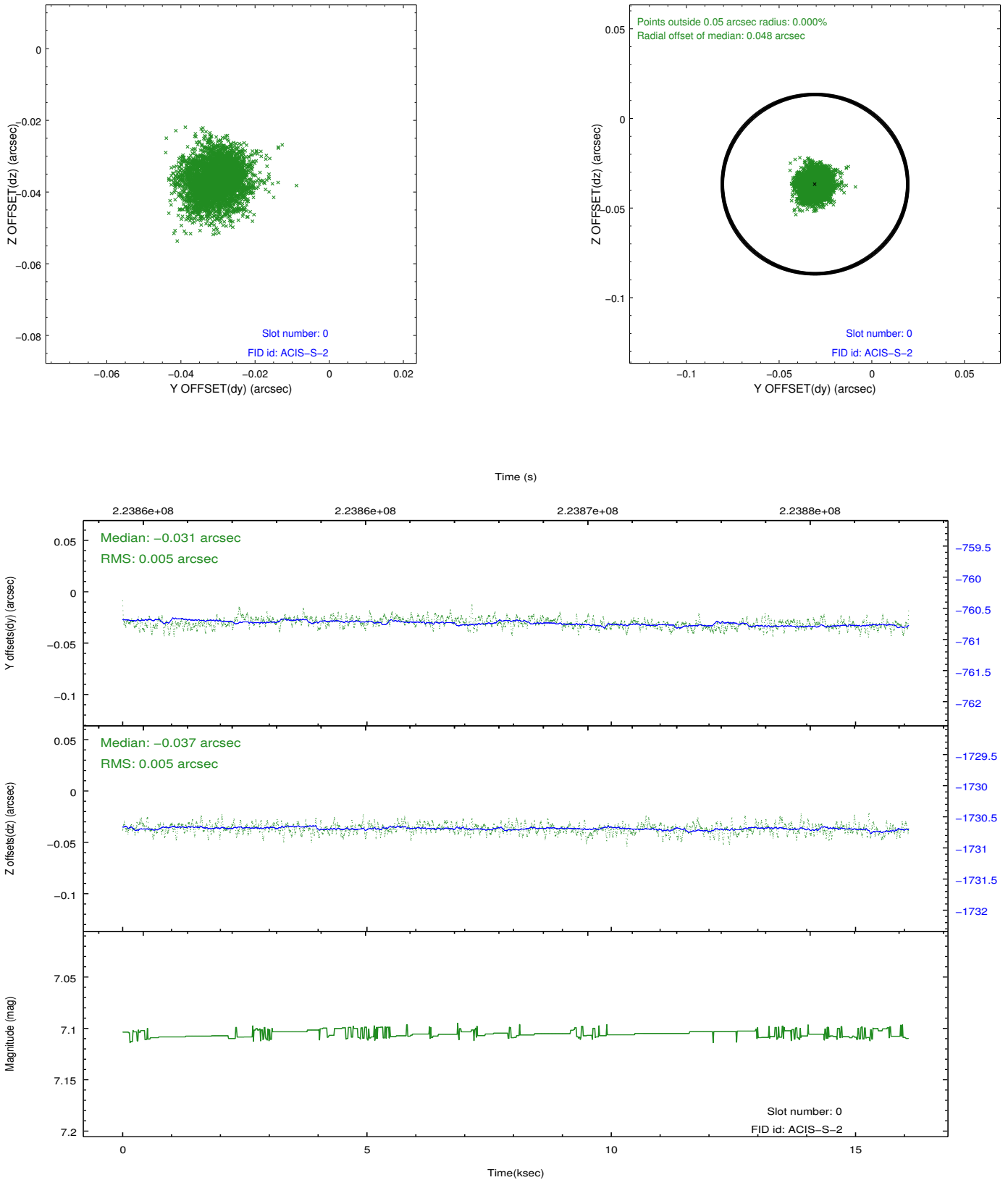


2.4.5 Slot 7

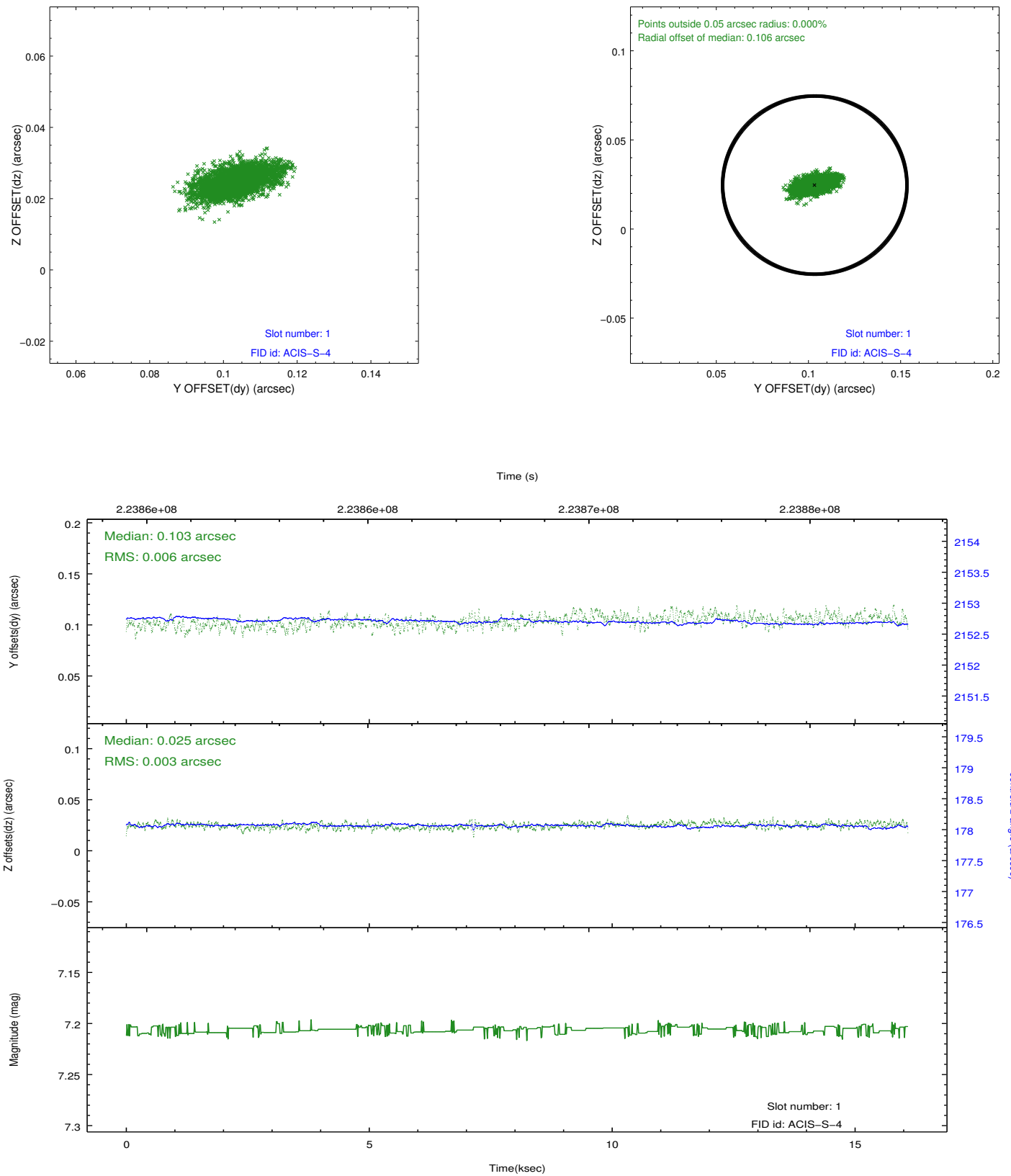


2.5 FID Slots

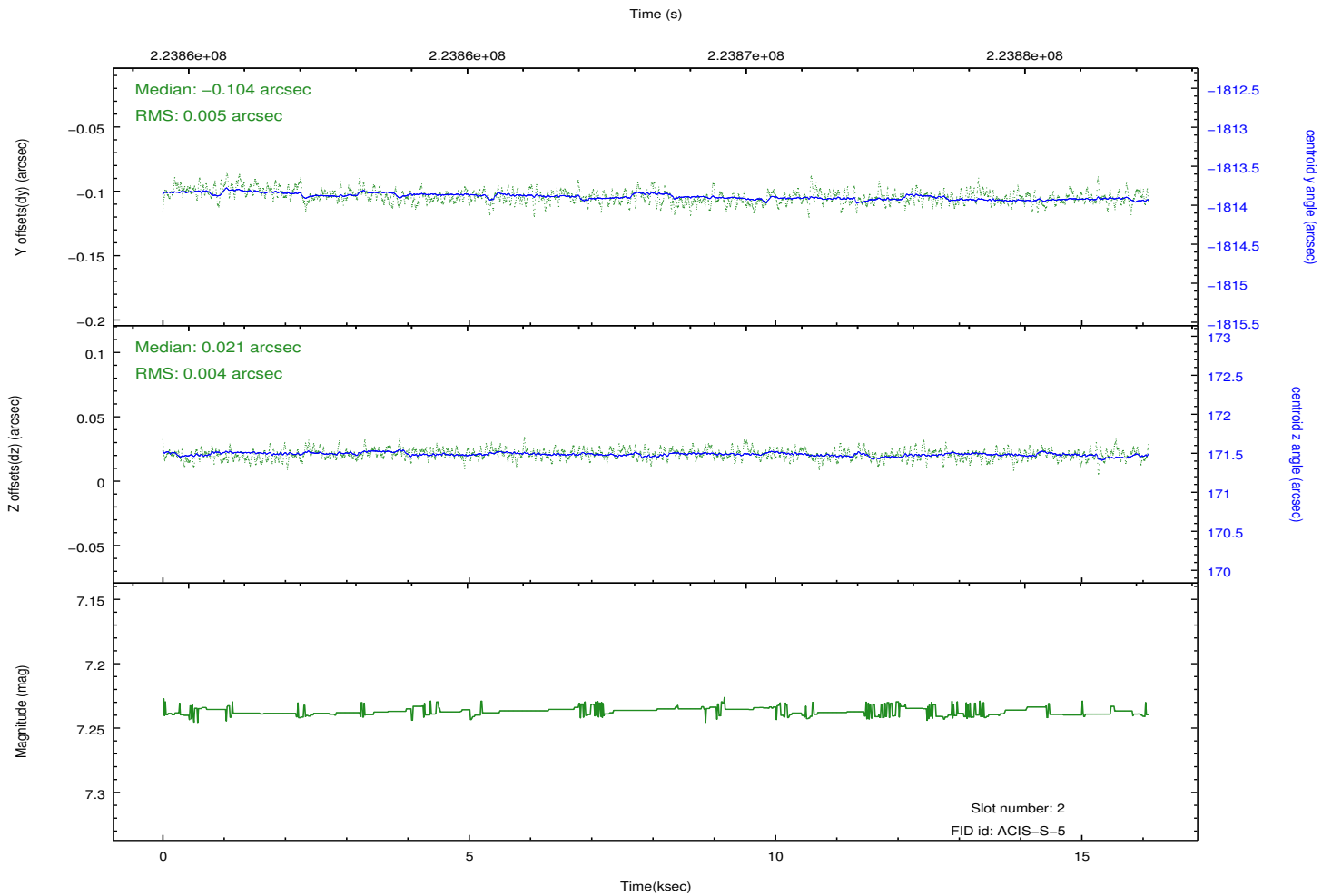
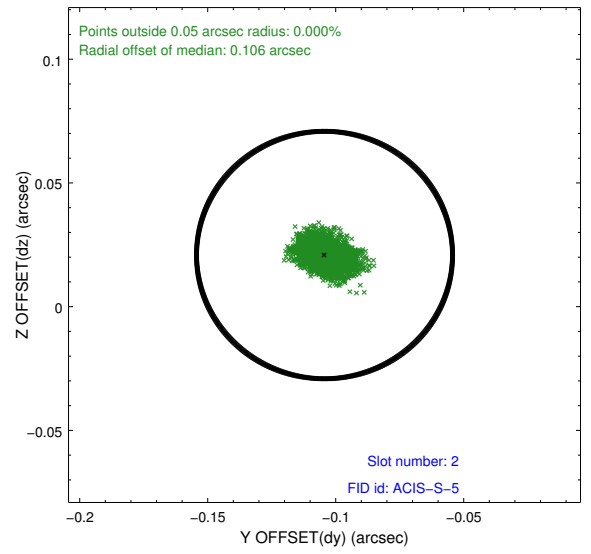
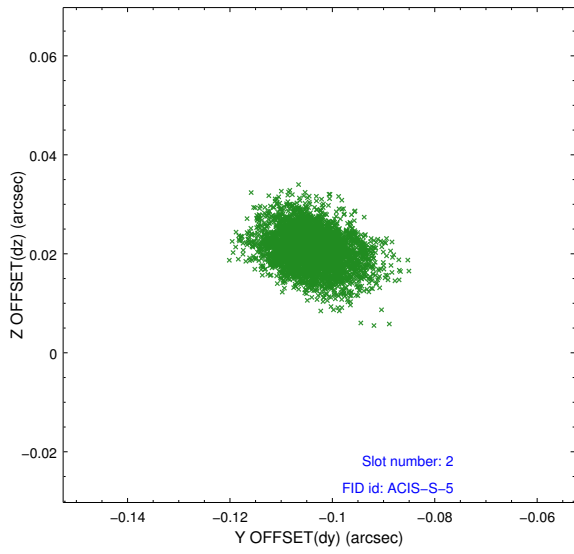
2.5.1 Slot 0



2.5.2 Slot 1



2.5.3 Slot 2



A Summary

A.1 Status

V&V Scientist	Jen Lauer
V&V Date (YYYY-MM-DD)	2013.01.09
V&V Edition	1
V&V Disposition and Status	OK
V&V Charge Time	16.04799

A.2 Comments