

V&V Reference Report

L2 ASCDS Version : 8.4.5

Observation 583 - L2 Version 3
Chandra X-Ray Center

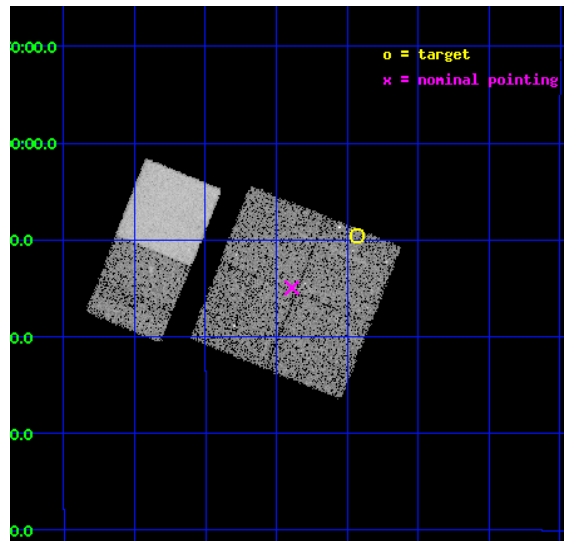
L2 Processing Date : Sep 6 2012

Contents

1	Front	2
2	OBI	3
2.1	OBI	3
2.1.1	Images	3
2.1.2	Bias	3
2.1.3	Parameters	4
2.1.4	Events	4
2.2	Compared Parameters	5
2.3	Aspect	6
2.4	Star Slots	9
2.4.1	Slot 0	9
2.4.2	Slot 1	10
2.4.3	Slot 2	11
2.4.4	Slot 6	12
2.4.5	Slot 7	13
2.5	FID Slots	14
2.5.1	Slot 4	14
2.5.2	Slot 5	15
A	Summary	16
A.1	Status	16
A.2	Comments	16

1 Front

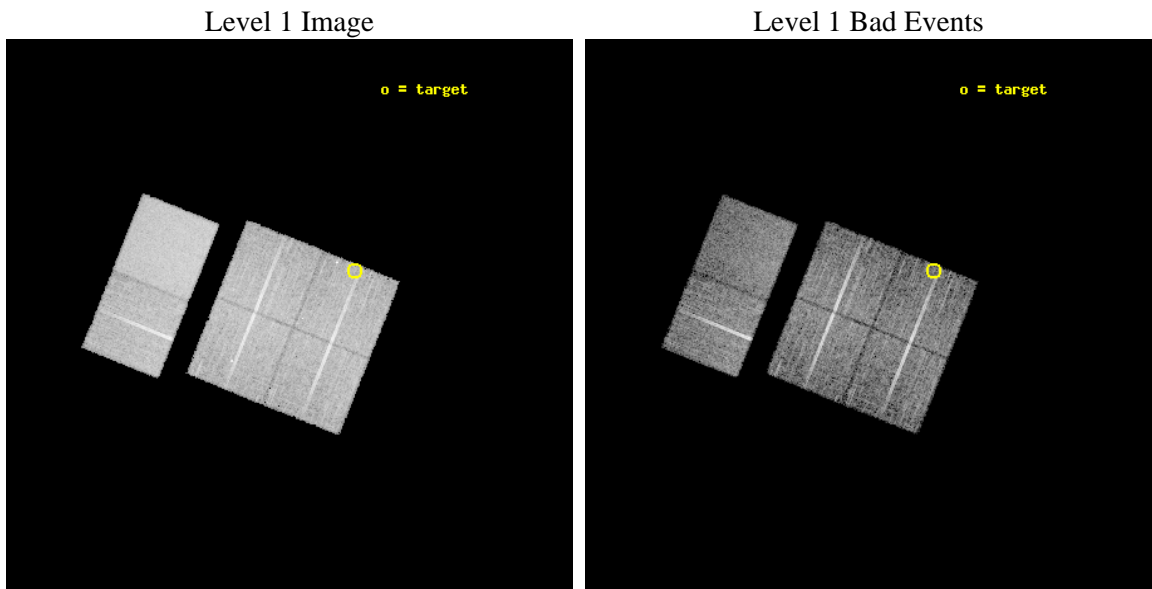
seq_num	100001	Sequence number
obs_id	583	Observation id
title	VENUS AND MARS: THE CLOSEST PLANETARY ANALOGUES TO COMETS	Proposal
observer	Dr. Konrad Dennerl	Principal investigator
object	VENUS	Source name
dtycycle	0	
cycle	P	events from which exps? Prim/Second/Both
ra_targ	342.23258	Observer's specified target RA [deg]
dec_targ	-8.15881	Observer's specified target Dec [deg]
ra_nom	342.34755209611	Nominal RA [deg]
dec_nom	-8.249341084779	Nominal Dec [deg]
roll_nom	291.89411866228	Nominal Roll [deg]
revision	3	Processing version of data
ontime	11859.033272967	Sum of GTIs [s]
livetime	11708.867053012	Livetime [s]
ontime0	11862.233153298	Sum of GTIs [s]
ontime1	11859.033272967	Sum of GTIs [s]
ontime2	11859.074273065	Sum of GTIs [s]
ontime3	11859.115313053	Sum of GTIs [s]
ontime6	11855.877140328	Sum of GTIs [s]
ontime7	11862.359080717	Sum of GTIs [s]
l2events	92212	Number of level 2 events



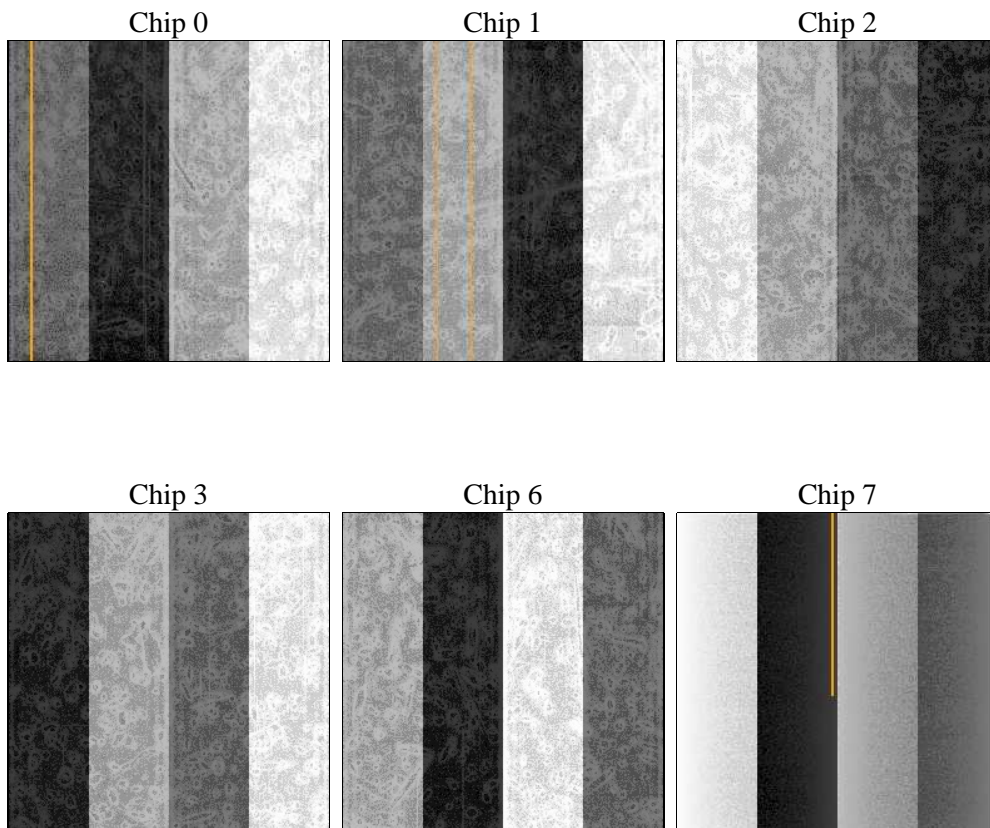
2 OBI

2.1 OBI

2.1.1 Images



2.1.2 Bias



2.1.3 Parameters

obi_num	0	Obi number	sched_exp_time	11900.000000	[s] Scheduled observation exposure time
ascdsver	8.4.5	Processing system revision	ontime	11859.033272967	Sum of GTIs [s]
caldbver	4.5.1.1	 	ontime0	11862.233153298	Sum of GTIs [s]
date	2012-09-06T11:26:43	Date and time of file creation	ontime1	11859.033272967	Sum of GTIs [s]
revision	3	Processing version of data	ontime2	11859.074273065	Sum of GTIs [s]
			ontime3	11859.115313053	Sum of GTIs [s]
			ontime6	11855.877140328	Sum of GTIs [s]
			ontime7	11862.359080717	Sum of GTIs [s]
			l1events	466458	Number of level 1 events

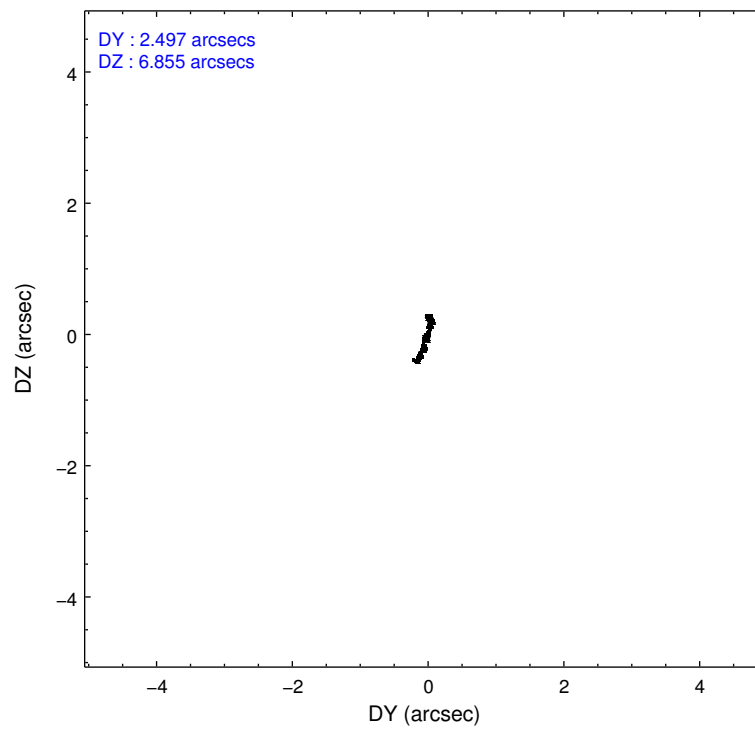
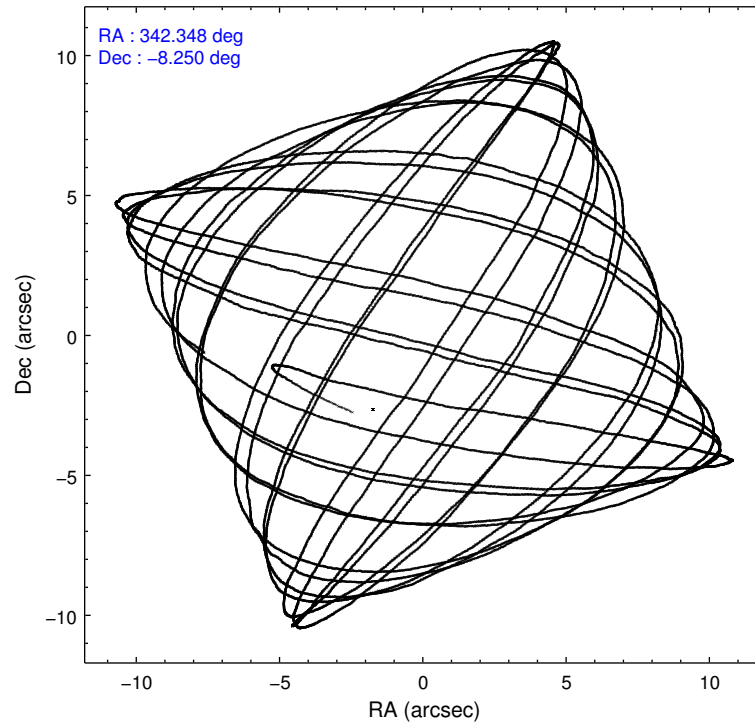
2.1.4 Events

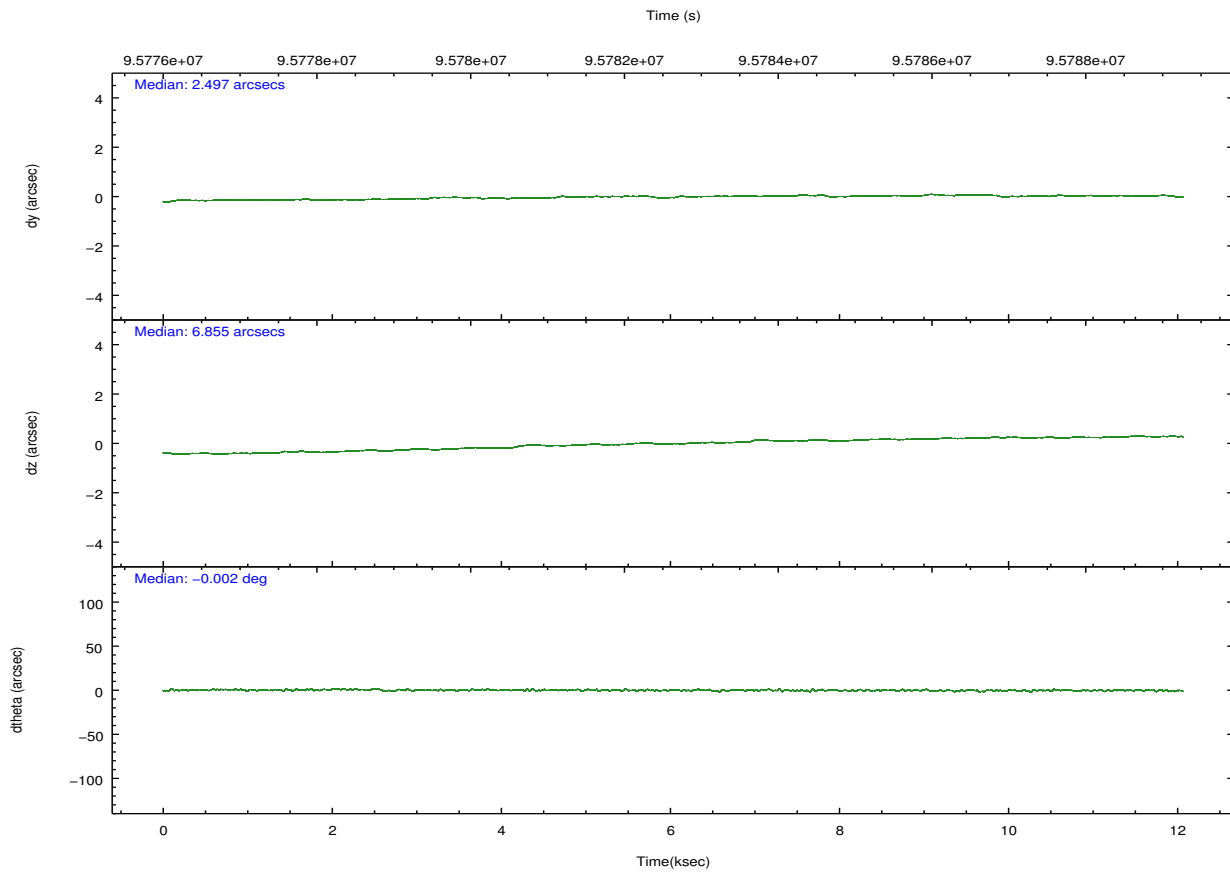
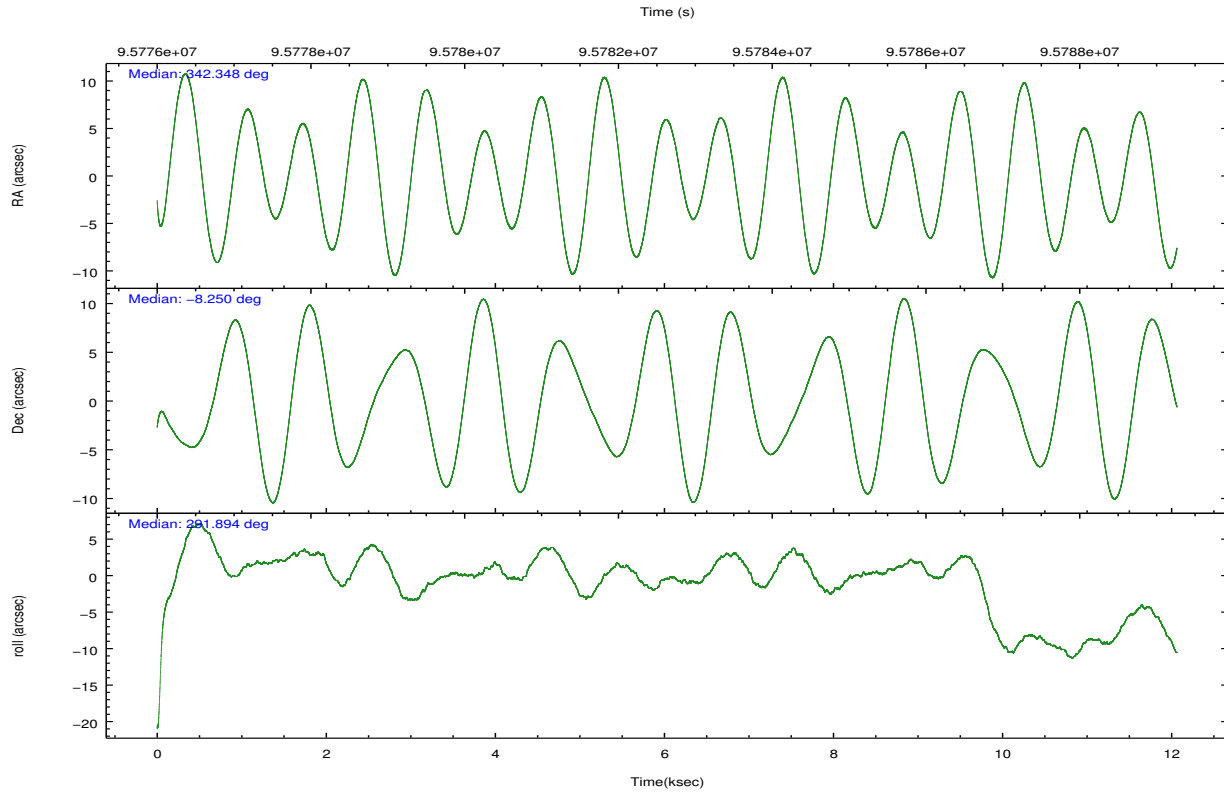
	ccd 0	ccd 1	ccd 2	ccd 3	ccd 6	ccd 7		ccd 0	ccd 1	ccd 2	ccd 3	ccd 6	ccd 7
level 1 events	66595	69036	72876	72974	78595	106382	grade 0 events	4327	4956	4377	4150	4529	5462
rejected events	57163	58411	63514	63945	68789	54818		6%	7%	6%	5%	5%	5%
rejected %	85%	84%	87%	87%	87%	51%	grade 1 events	27	74	38	52	49	83
								0%	0%	0%	0%	0%	0%
							grade 2 events	1957	2016	1966	1859	1966	9824
								2%	2%	2%	2%	2%	9%
							grade 3 events	878	984	805	763	829	4546
								1%	1%	1%	1%	1%	4%
							grade 4 events	757	886	721	794	854	4444
								1%	1%	0%	1%	1%	4%
							grade 5 events	2500	2707	2383	2730	3046	8945
								3%	3%	3%	3%	3%	8%
							grade 6 events	1520	1786	1497	1465	1629	27308
								2%	2%	2%	2%	2%	25%
							grade 7 events	54629	55627	61089	61161	65693	45770
								82%	80%	83%	83%	83%	43%

2.2 Compared Parameters

Parameter	Planned	Actual	Parameter	Planned	Actual
Instrument	ACIS	ACIS	Obspar format version number	7	7
Detector	ACIS-012367	ACIS-012367	Obspar file type	PREDICTED	ACTUAL
Grating	NONE	NONE	Obspar update status	NONE	UPDATED
Data mode	VFAINT	VFAINT	Number of optional ACIS chips dropped	0	0
Observation mode	POINTING	POINTING	On-chip summing requested	N	N
[deg] Pointing RA	342.325726	342.3475520961148	Subarray requested	NONE	NONE
[deg] Pointing Dec	-8.232360	-8.24934108477899	Alternating exposures requested	N	N
[deg] Pointing Roll	291.682320	291.8941186622782	[s] Primary exposure time	0.000000	3.2
[s] Window start time (MET)	95299264.184000	95299264.184000			
[s] Window stop time (MET)	95990464.184000	95990464.184000			
[mm] SIM focus pos	-0.782348	-0.7809083437167272			
[mm] SIM defocus	0	0.001439871863259334			
[mm] SIM translation stage pos	-233.592463	-233.5874344608287			
[mm] SIM translation stage offset	0	-0.005018542100998502			
[s] Observation start time (MET)	95776764.184000	95775796.26774199			
Observation start date	2001-01-13T12:38:20	2001-01-13T12:23:16			
[s] Observation end time (MET)	95788664.184000	95789266.81826			
Observation end date	2001-01-13T15:56:40	2001-01-13T16:07:46			
Read mode	TIMED	TIMED			

2.3 Aspect



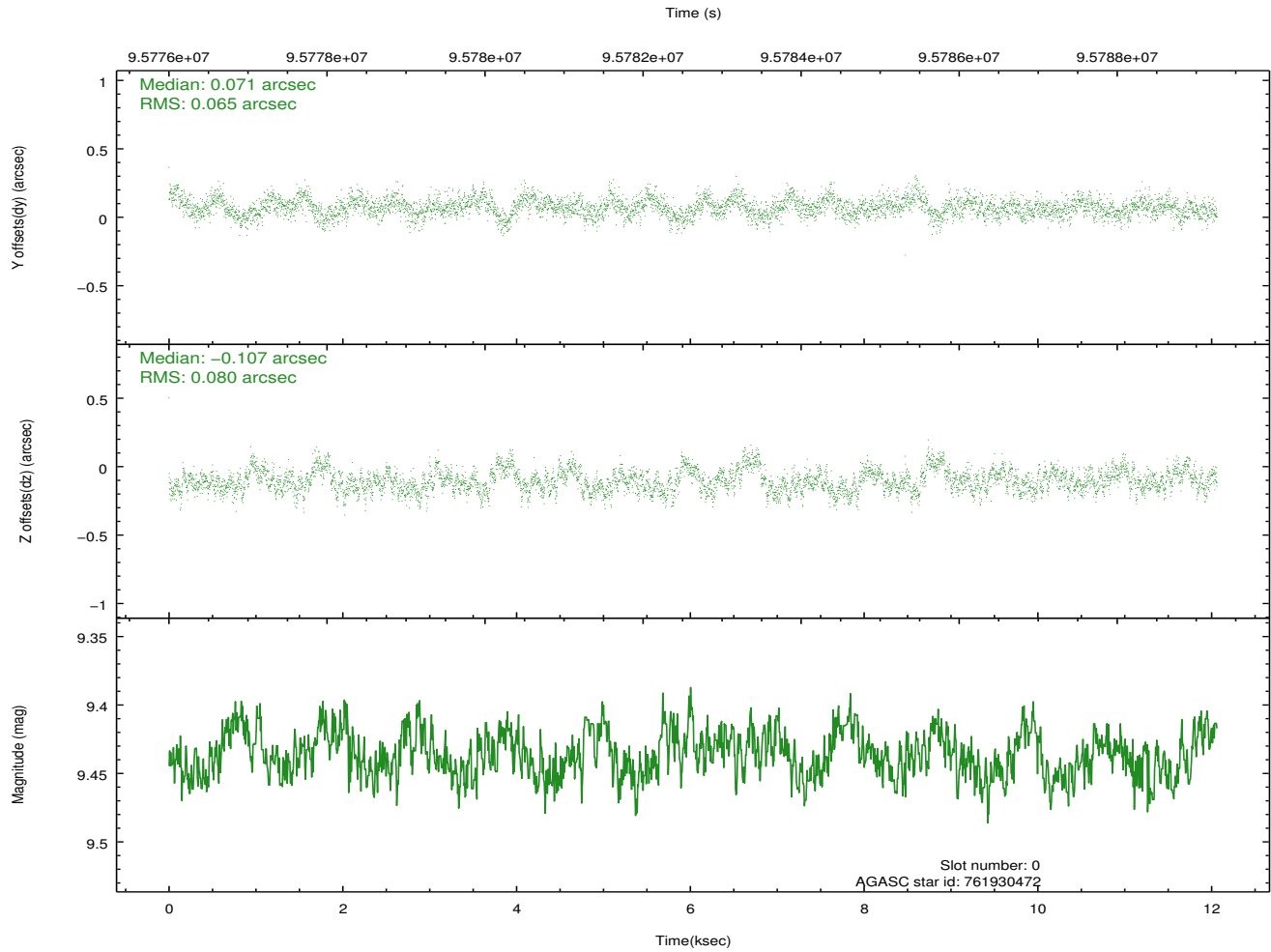
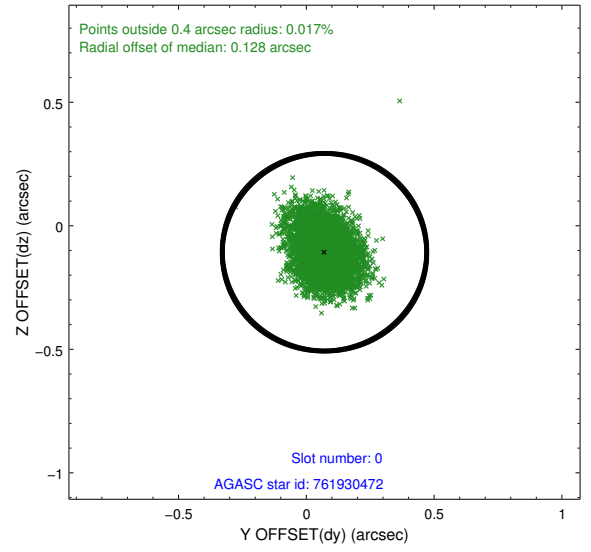
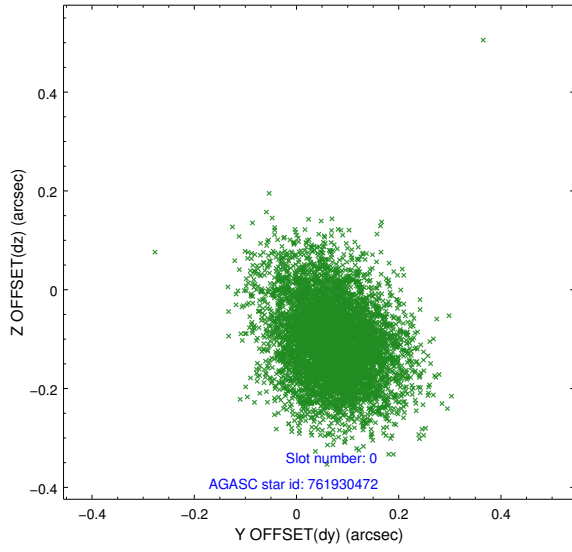


Slot Statistics

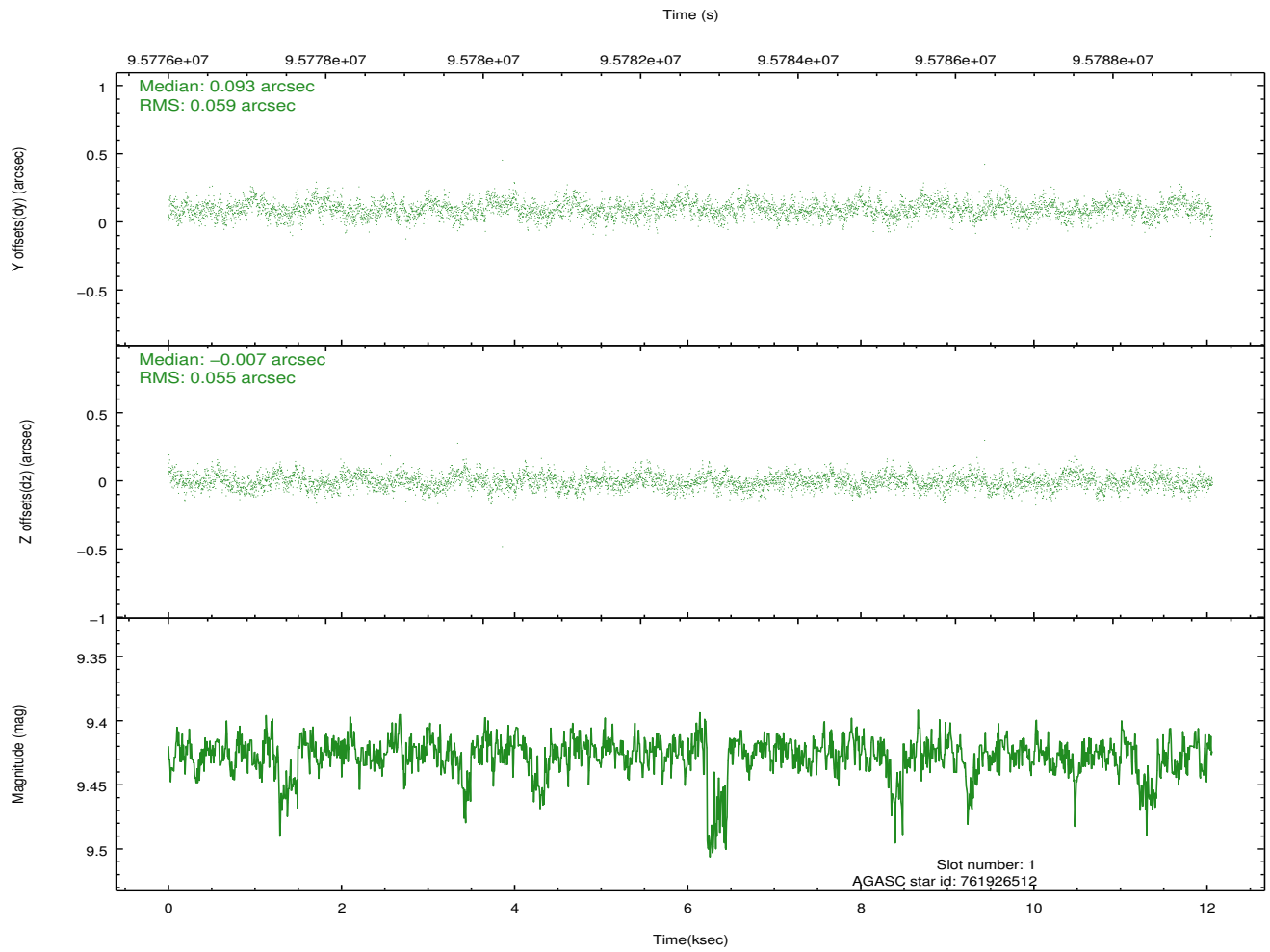
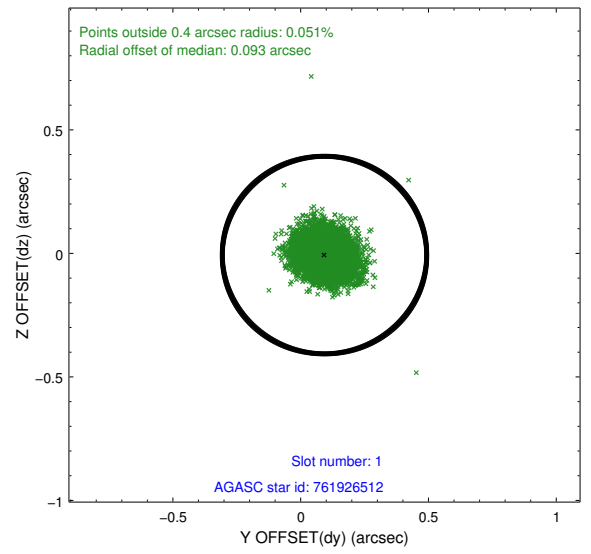
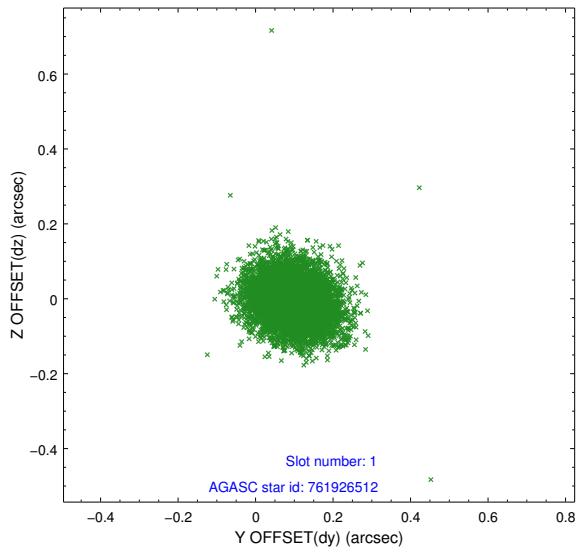
slot	status	id	mag	n_pts	med_dy	med_dz	dr1	dr2	ra	dec	mean_y	mean_z
0	GUIDE	761930472	9.44	5880	0.071	-0.107	0.108	0.181	342.231029	-8.864868	1990.68	-1155.03
1	GUIDE	761926512	9.43	5882	0.093	-0.007	0.085	0.137	342.834085	-8.658731	2095.50	1113.05
2	GUIDE	686954080	8.34	5883	-0.173	0.046	0.089	0.142	342.559336	-7.459837	-2276.82	1802.00
3	OMITTED		0.00	0	0.000	0.000	0.000	0.000	0.000000	0.000000	0.00	0.00
4	FID	ACIS-I-1	7.24	2940	-0.031	0.034	0.006	0.013	0.000000	0.000000	937.30	-830.18
5	FID	ACIS-I-6	7.26	2937	-0.028	0.011	0.006	0.013	0.000000	0.000000	403.35	1711.41
6	GUIDE	761923880	9.21	5876	0.029	0.005	0.091	0.144	342.941535	-8.558862	1902.53	1601.99
7	GUIDE	761923720	9.02	5878	-0.018	0.057	0.071	0.114	342.814332	-8.300608	871.72	1525.98

2.4 Star Slots

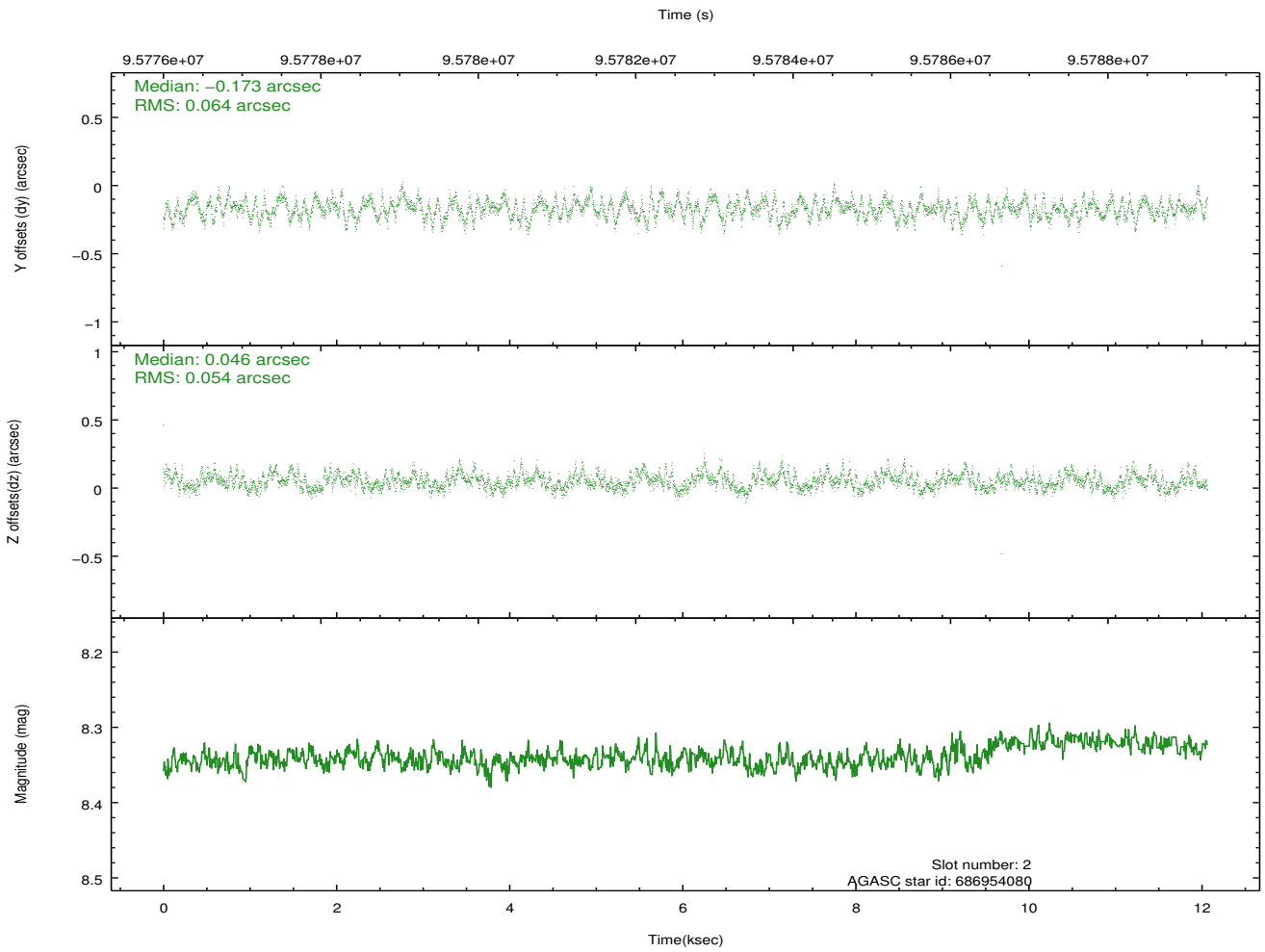
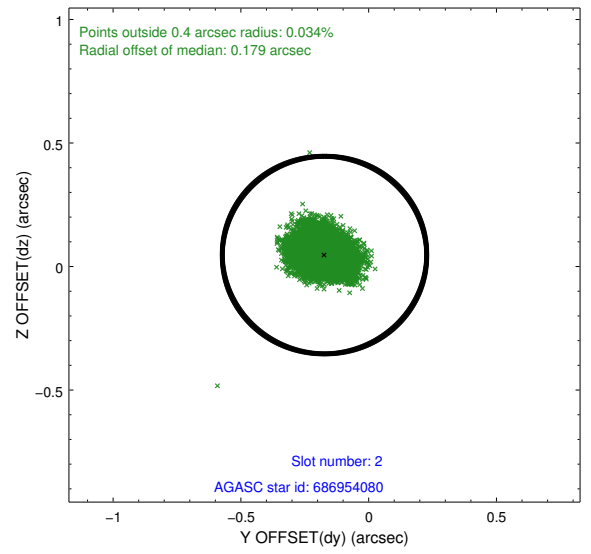
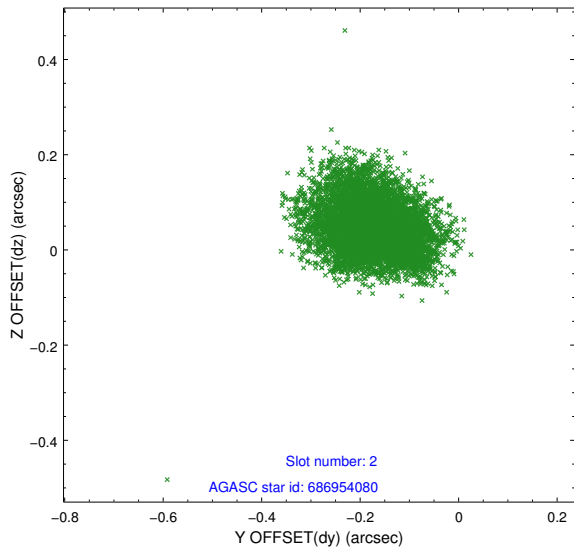
2.4.1 Slot 0



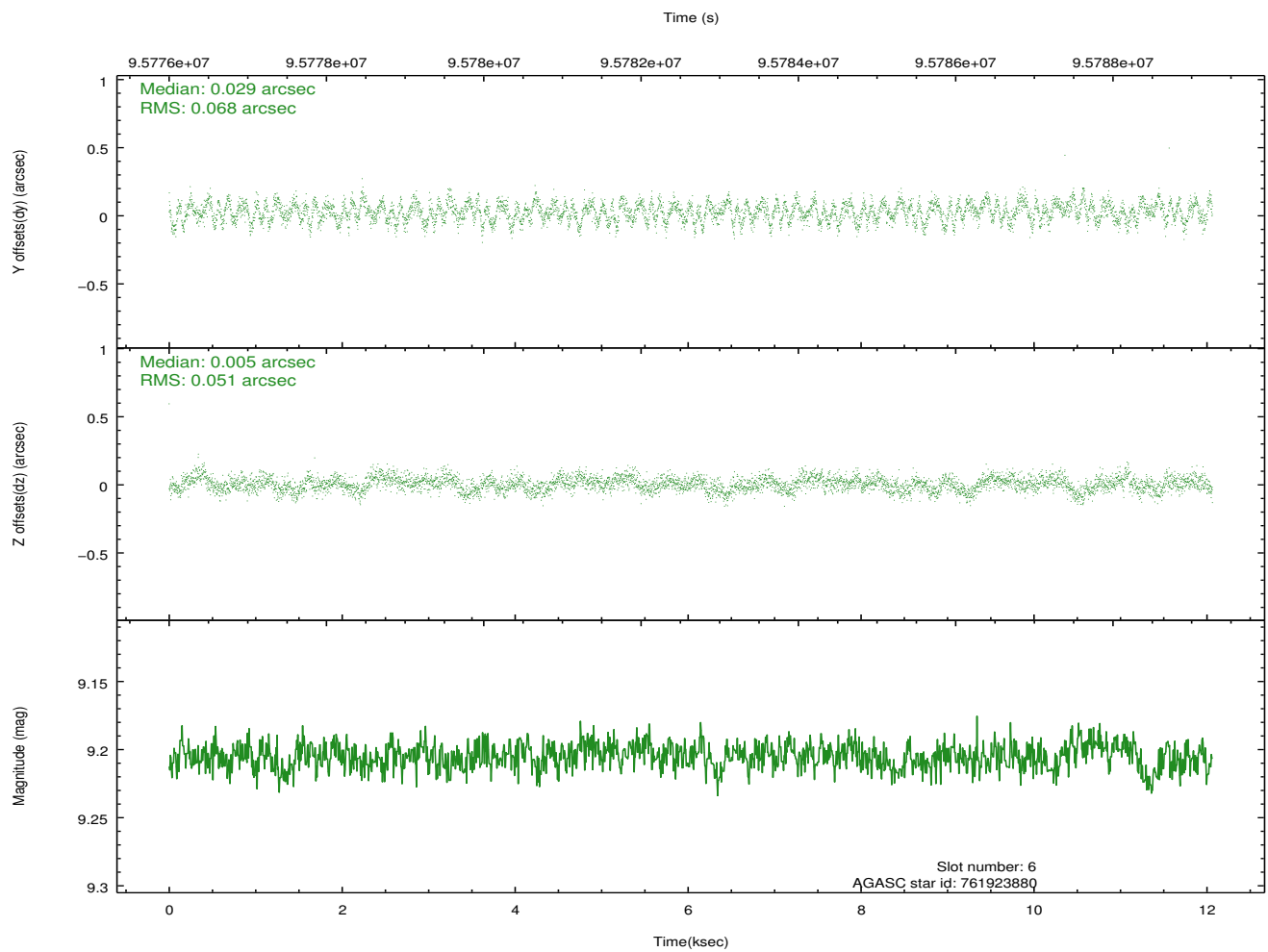
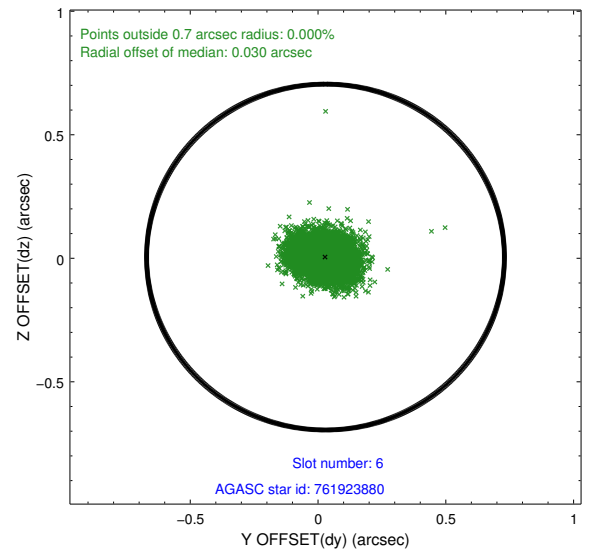
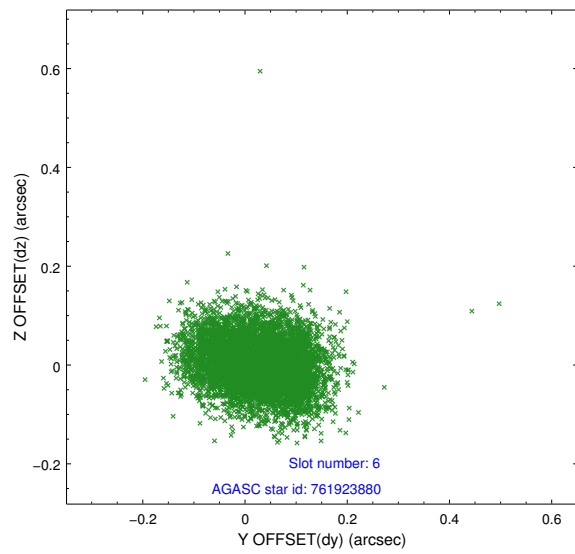
2.4.2 Slot 1



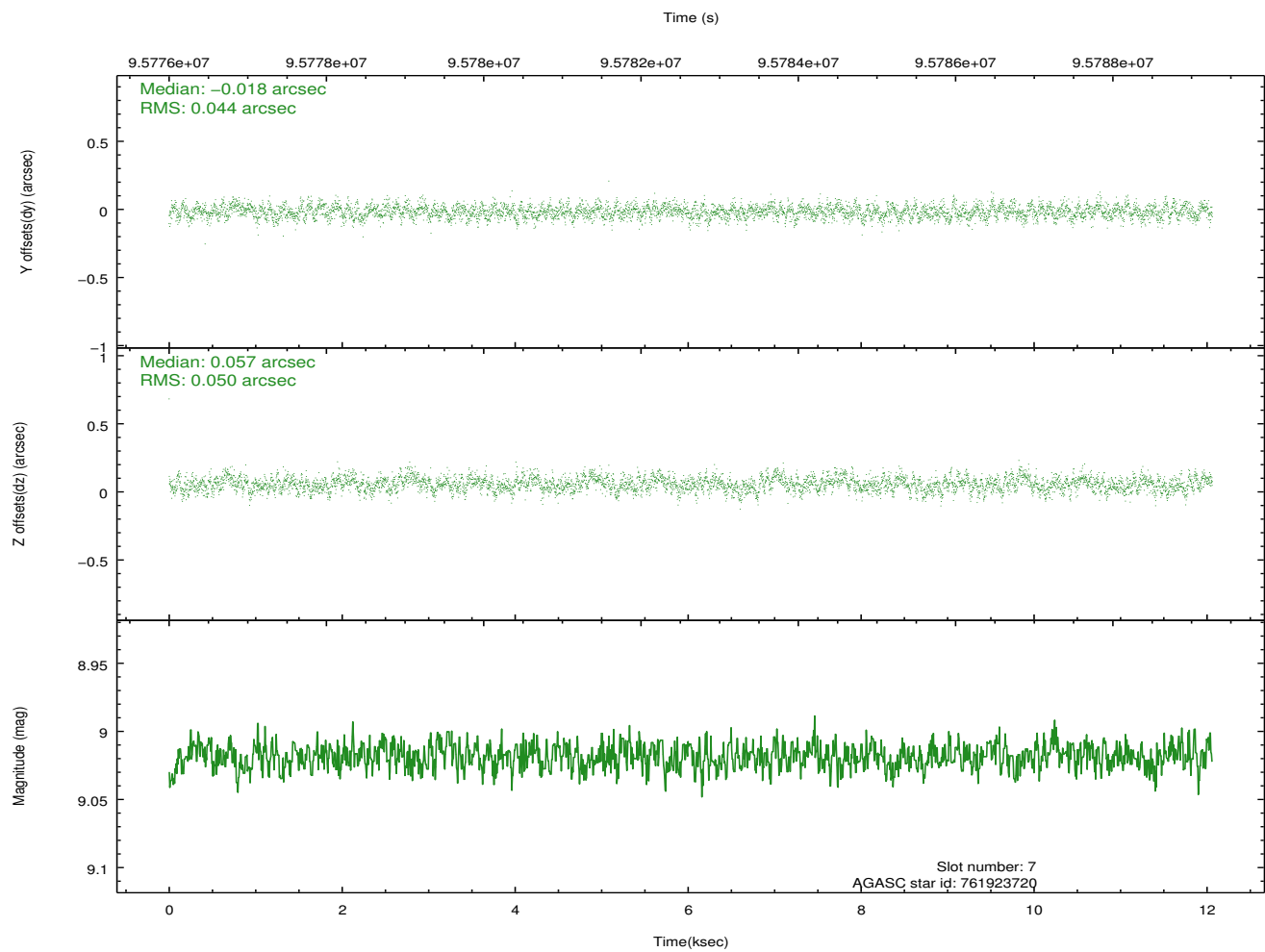
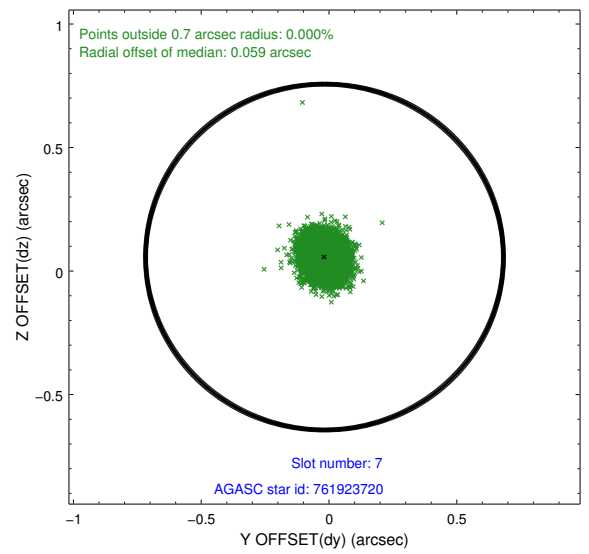
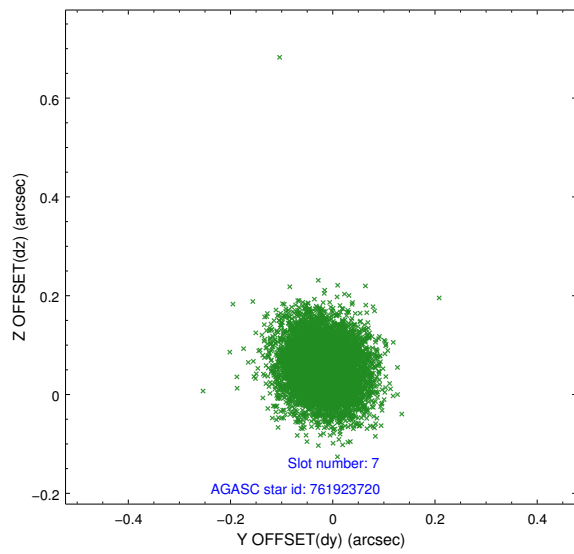
2.4.3 Slot 2



2.4.4 Slot 6

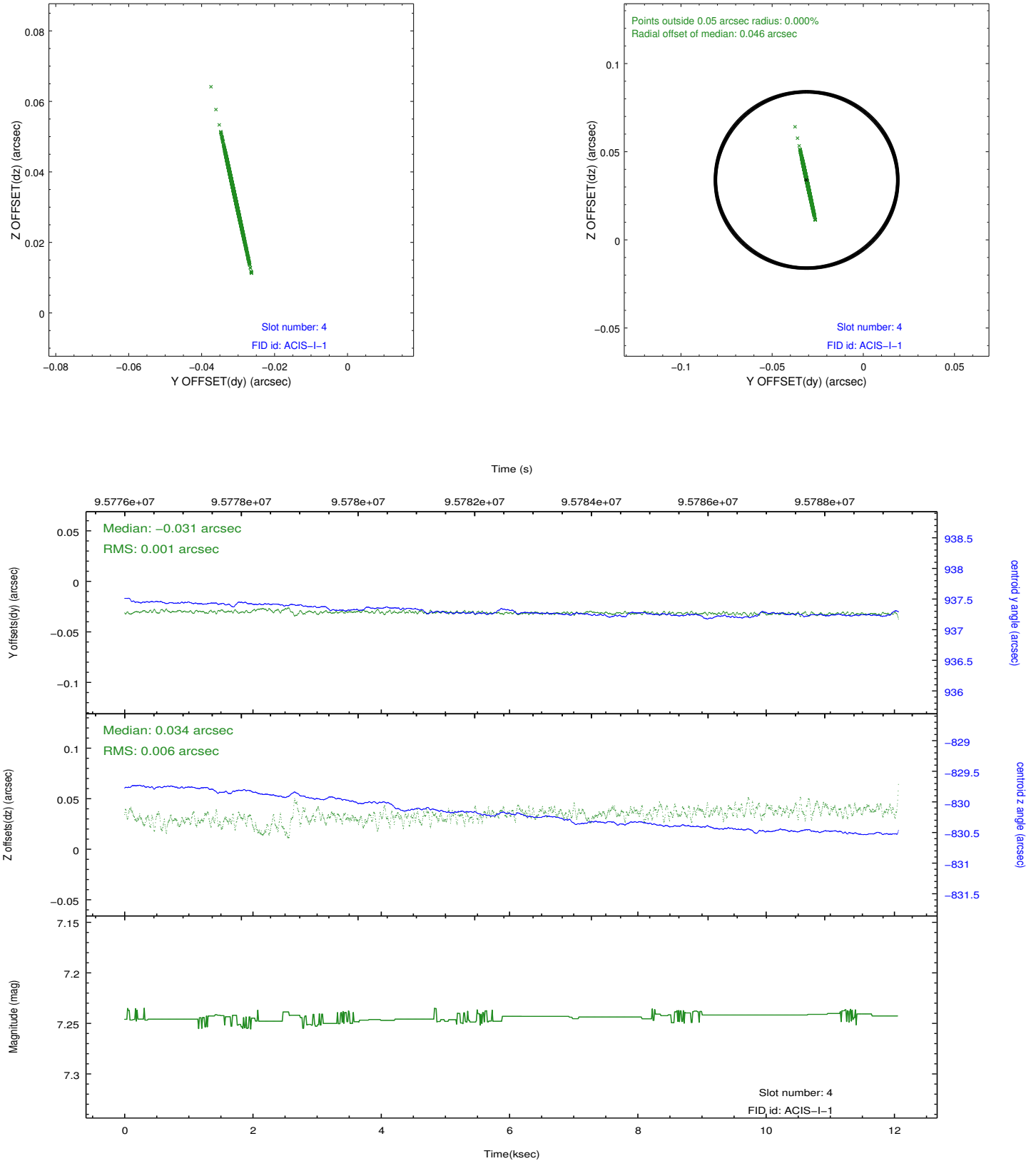


2.4.5 Slot 7

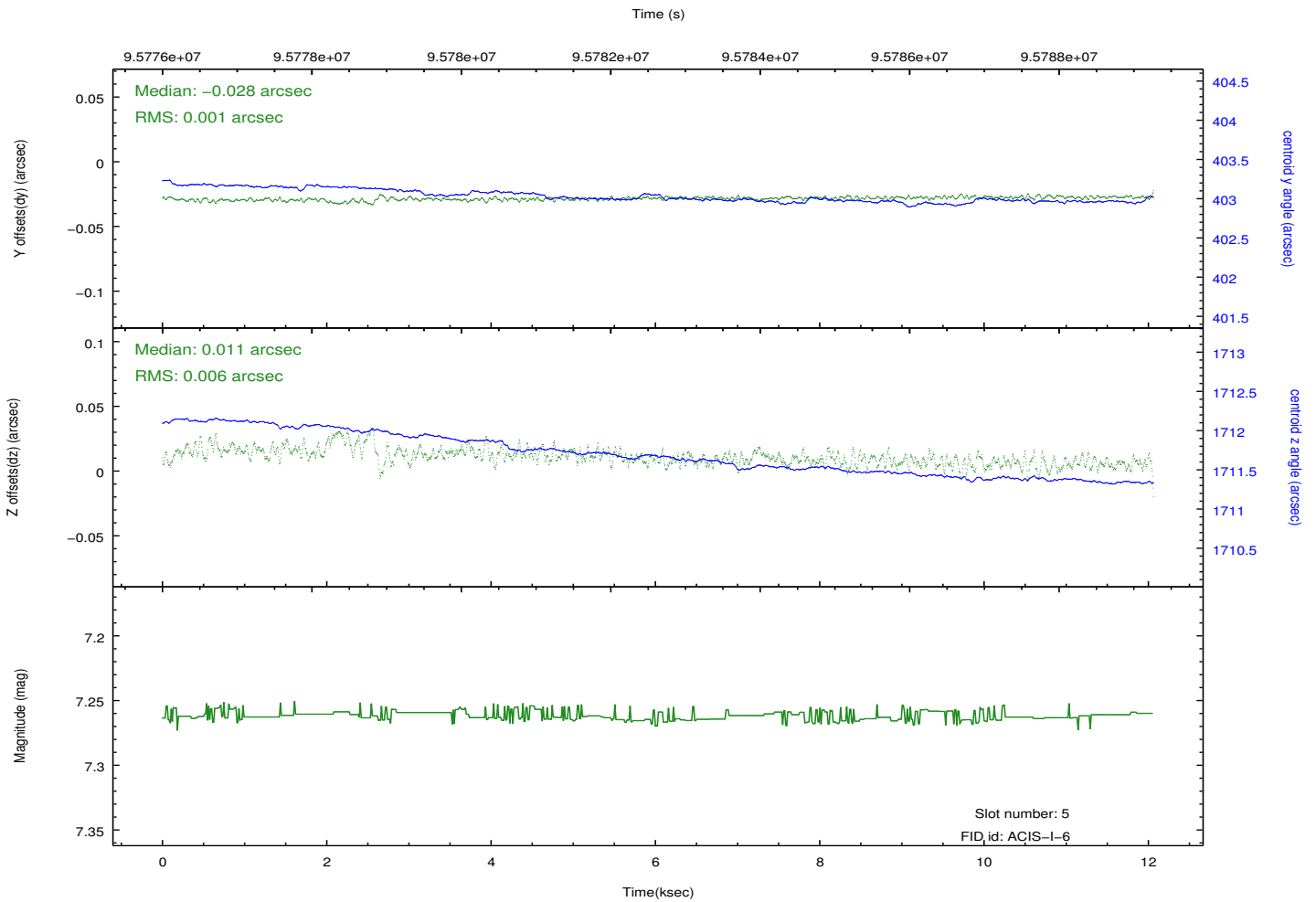
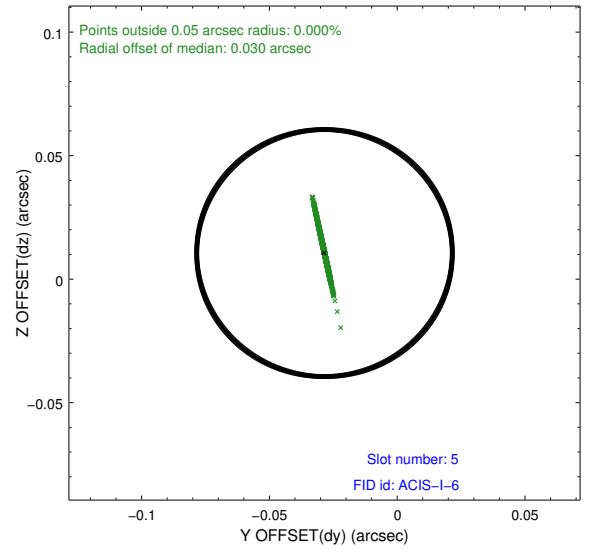
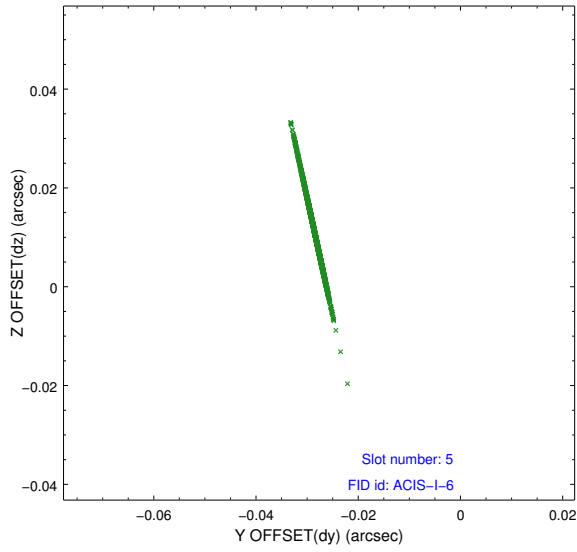


2.5 FID Slots

2.5.1 Slot 4



2.5.2 Slot 5



A Summary

A.1 Status

V&V Scientist	Jen Lauer
V&V Date (YYYY-MM-DD)	2012.09.17
V&V Edition	1
V&V Disposition and Status	OK
V&V Charge Time	11.852

A.2 Comments

Window constraint met. Moving target observation; Venus is not visible. Users will need to run `sso_freeze` or similar software to position the events in the reference frame of the target.