

# V&V Reference Report

## L2 ASCDS Version : 8.5.1.1

Observation 5923 - L2 Version 3  
Chandra X-Ray Center

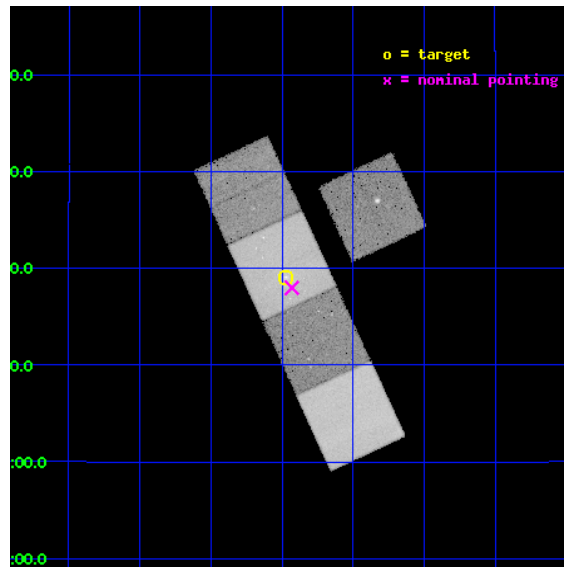
L2 Processing Date : Dec 24 2012

## Contents

<b>1</b>	<b>Front</b>	<b>2</b>
<b>2</b>	<b>OBI</b>	<b>3</b>
2.1	OBI . . . . .	3
2.1.1	Images . . . . .	3
2.1.2	Bias . . . . .	3
2.1.3	Parameters . . . . .	4
2.1.4	Events . . . . .	4
2.2	Compared Parameters . . . . .	5
2.3	Aspect . . . . .	6
2.4	Star Slots . . . . .	9
2.4.1	Slot 3 . . . . .	9
2.4.2	Slot 4 . . . . .	10
2.4.3	Slot 5 . . . . .	11
2.4.4	Slot 6 . . . . .	12
2.4.5	Slot 7 . . . . .	13
2.5	FID Slots . . . . .	14
2.5.1	Slot 0 . . . . .	14
2.5.2	Slot 1 . . . . .	15
2.5.3	Slot 2 . . . . .	16
<b>A</b>	<b>Summary</b>	<b>17</b>
A.1	Status . . . . .	17
A.2	Comments . . . . .	17

# 1 Front

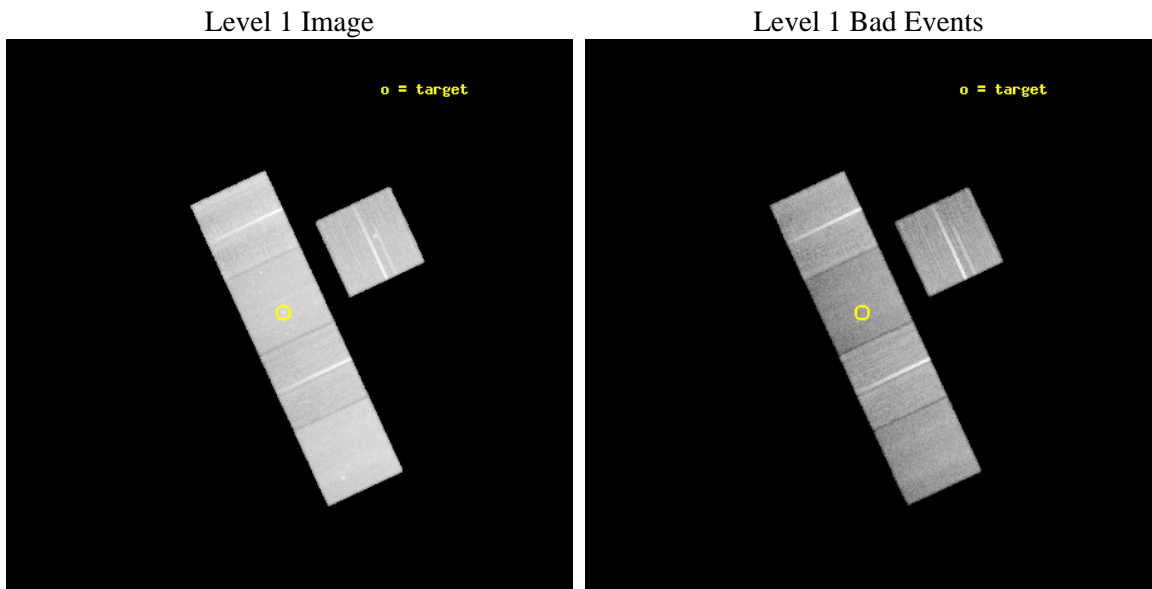
seq_num	600442	Sequence number
obs_id	5923	Observation id
title	Low Mass X-ray Binaries and Globular Clusters in the Early-Type Galaxy NGC 4365	Proposal title
observer	Prof. Gregory Sivakoff	Principal investigator
object	NGC4365	Source name
dtcycle	0	&#160
cycle	P	events from which exps? Prim/Second/Both
ra_targ	186.117917	Observer's specified target RA [deg]
dec_targ	7.317722	Observer's specified target Dec [deg]
ra_nom	186.10755082336	Nominal RA [deg]
dec_nom	7.2996789246999	Nominal Dec [deg]
roll_nom	245.08314353128	Nominal Roll [deg]
revision	3	Processing version of data
ontime	40089.199922889	Sum of GTIs [s]
livetime	39565.405012657	Livetime [s]
ontime3	40089.199922889	Sum of GTIs [s]
ontime5	40089.199922889	Sum of GTIs [s]
ontime6	40079.776982307	Sum of GTIs [s]
ontime7	40089.199922889	Sum of GTIs [s]
ontime8	40082.918042123	Sum of GTIs [s]
l2events	375366	Number of level 2 events



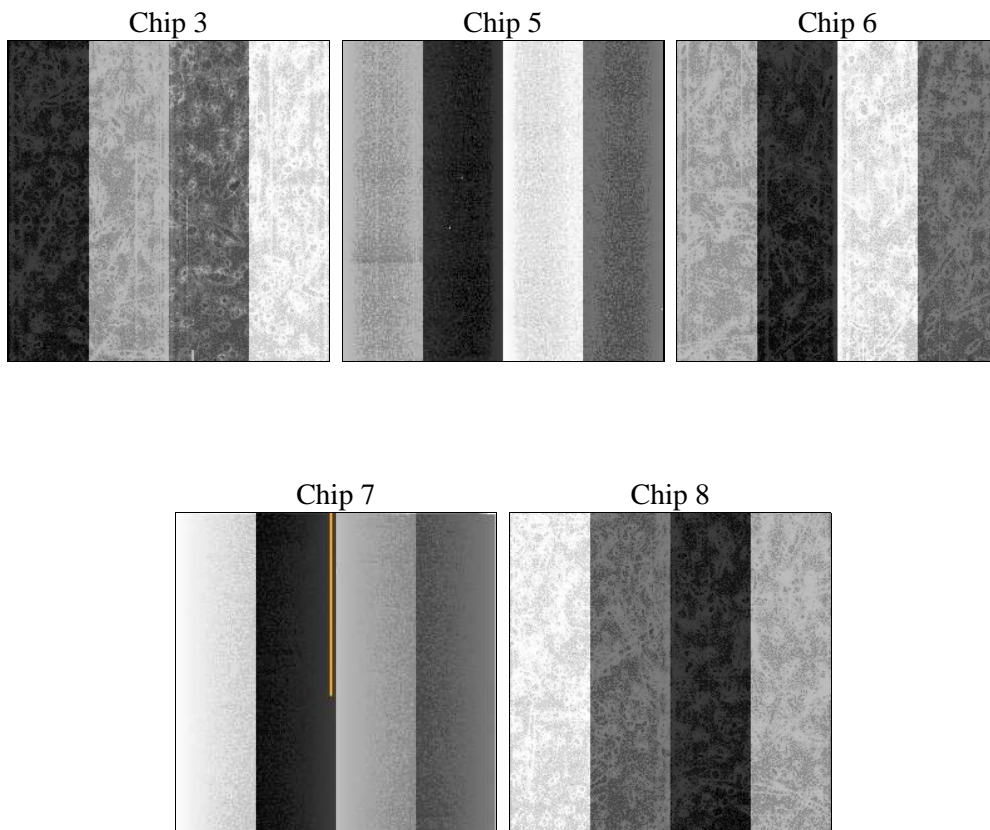
## 2 OBI

### 2.1 OBI

#### 2.1.1 Images



#### 2.1.2 Bias



### 2.1.3 Parameters

obi_num	0	Obi number	sched_exp_time	40000.000000	[s] Scheduled observation exposure time
ascdsver	8.5.1.1	Processing system revision	ontime	40089.199922889	Sum of GTIs [s]
caldbver	4.5.5	&#160	ontime3	40089.199922889	Sum of GTIs [s]
date	2012-12-24T15:15:07	Date and time of file creation	ontime5	40089.199922889	Sum of GTIs [s]
revision	3	Processing version of data	ontime6	40079.776982307	Sum of GTIs [s]
			ontime7	40089.199922889	Sum of GTIs [s]
			ontime8	40082.918042123	Sum of GTIs [s]
			l1events	1477408	Number of level 1 events

### 2.1.4 Events

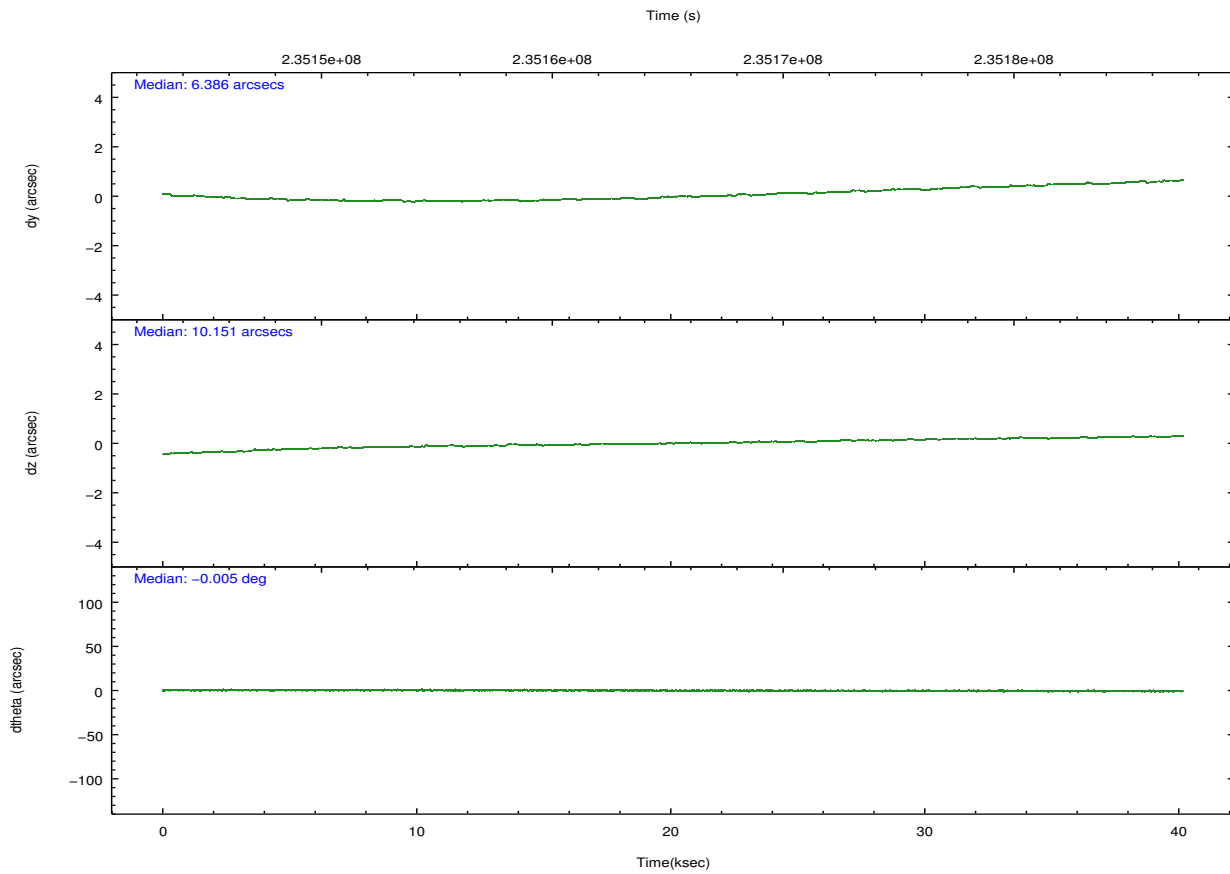
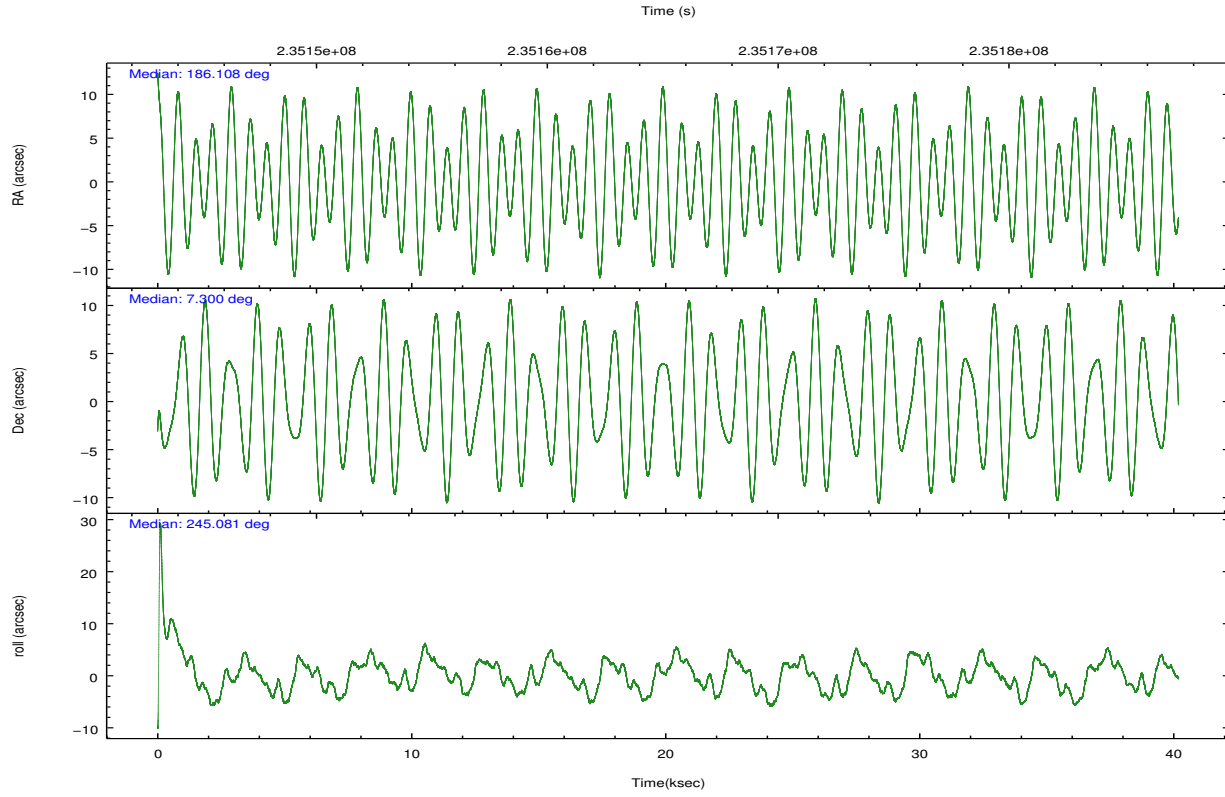
	ccd 3	ccd 5	ccd 6	ccd 7	ccd 8
level 1 events	252285	343879	263148	291220	326876
rejected events	227079	175391	235374	153177	248015
rejected %	90%	51%	89%	52%	75%

	ccd 3	ccd 5	ccd 6	ccd 7	ccd 8
grade 0 events	9928	12456	10661	14522	24779
	3%	3%	4%	4%	7%
grade 1 events	139	323	119	223	212
	0%	0%	0%	0%	0%
grade 2 events	5241	50065	5749	27814	17319
	2%	14%	2%	9%	5%
grade 3 events	2706	7729	2937	13146	8568
	1%	2%	1%	4%	2%
grade 4 events	2658	7449	2856	12964	7926
	1%	2%	1%	4%	2%
grade 5 events	10023	27456	10212	29653	14731
	3%	7%	3%	10%	4%
grade 6 events	4675	90818	5575	69618	20279
	1%	26%	2%	23%	6%
grade 7 events	216915	147583	225039	123280	233062
	85%	42%	85%	42%	71%

## 2.2 Compared Parameters

Parameter	Planned	Actual	Parameter	Planned	Actual
Instrument	ACIS	ACIS	Obspar format version number	7	7
Detector	ACIS-35678	ACIS-35678	Obspar file type	PREDICTED	ACTUAL
Grating	NONE	NONE	Obspar update status	NONE	UPDATED
Data mode	VFAINT	VFAINT	Number of optional ACIS chips dropped	0	0
Observation mode	POINTING	POINTING	On-chip summing requested	N	N
[deg] Pointing RA	186.104746	186.1075508233605	Subarray requested	NONE	NONE
[deg] Pointing Dec	7.326774	7.299678924699889	Alternating exposures requested	N	N
[deg] Pointing Roll	244.926891	245.0831435312846	[s] Primary exposure time	0.000000	3.1
[mm] SIM focus pos	-0.684267	-0.6828225247311905			
[mm] SIM defocus	0	0.001444936568705701			
[mm] SIM translation stage pos	-190.132523	-190.1400660498719			
[mm] SIM translation stage offset	0	0.00754346686406393			
[s] Observation start time (MET)	235145320.184000	235144364.36966			
Observation start date	2005-06-14T14:07:36	2005-06-14T13:52:44			
[s] Observation end time (MET)	235185320.184000	235186113.64656			
Observation end date	2005-06-15T01:14:16	2005-06-15T01:28:33			
Read mode	TIMED	TIMED			

## 2.3 Aspect

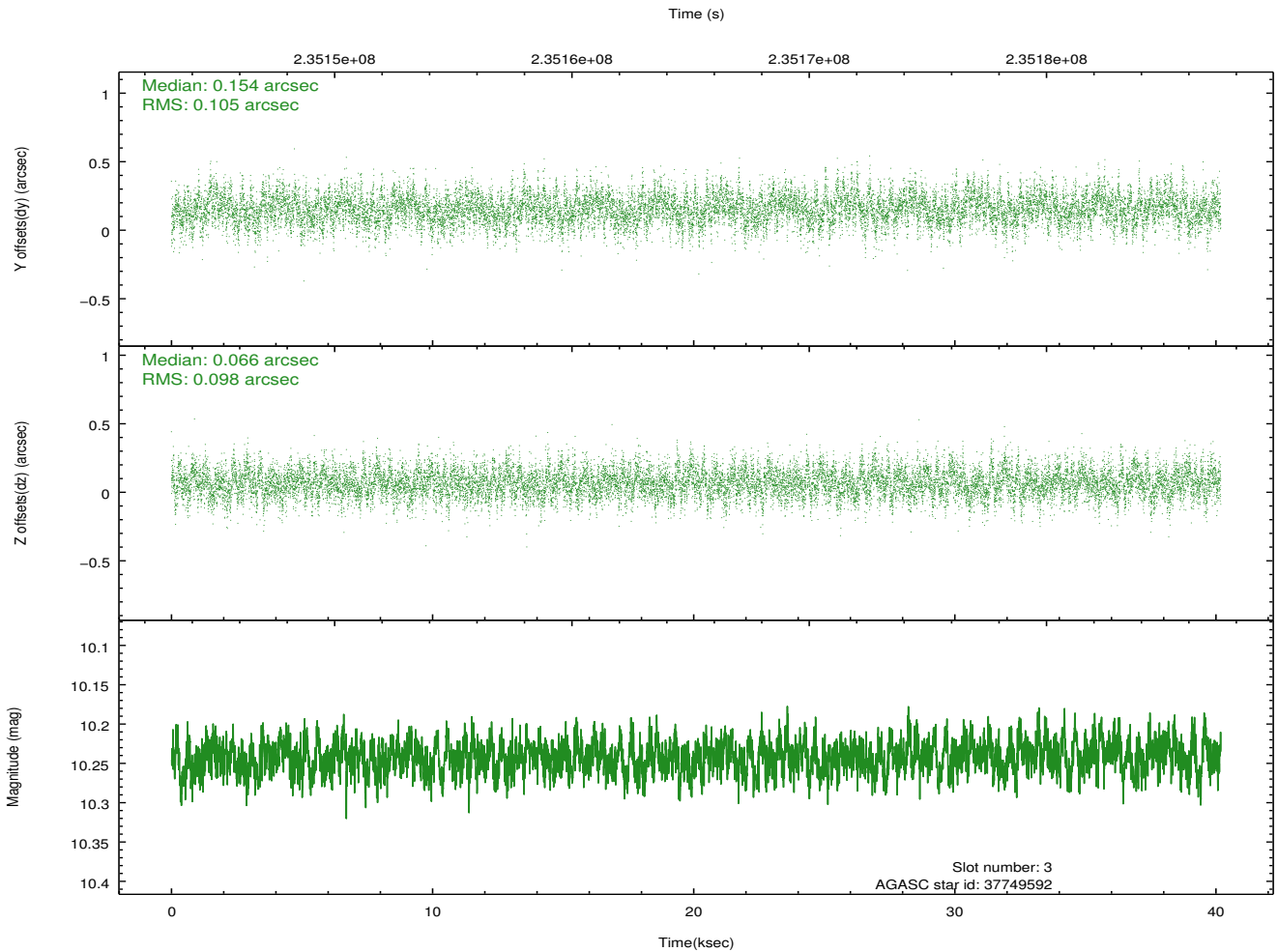
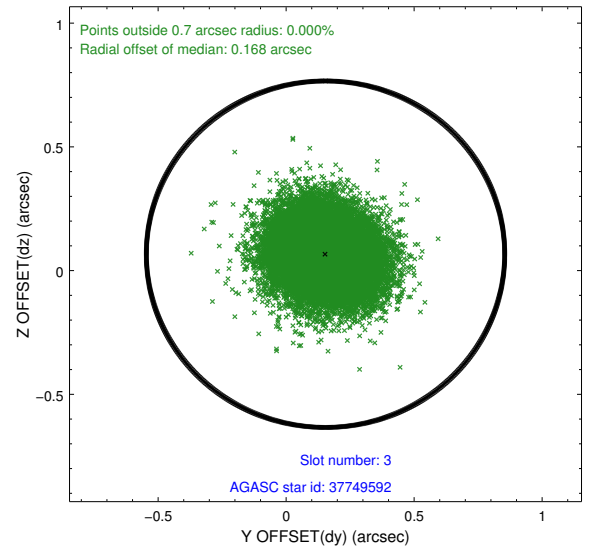
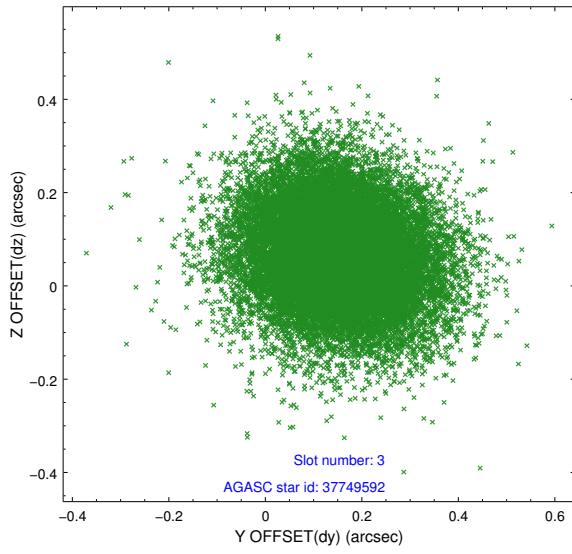


### Slot Statistics

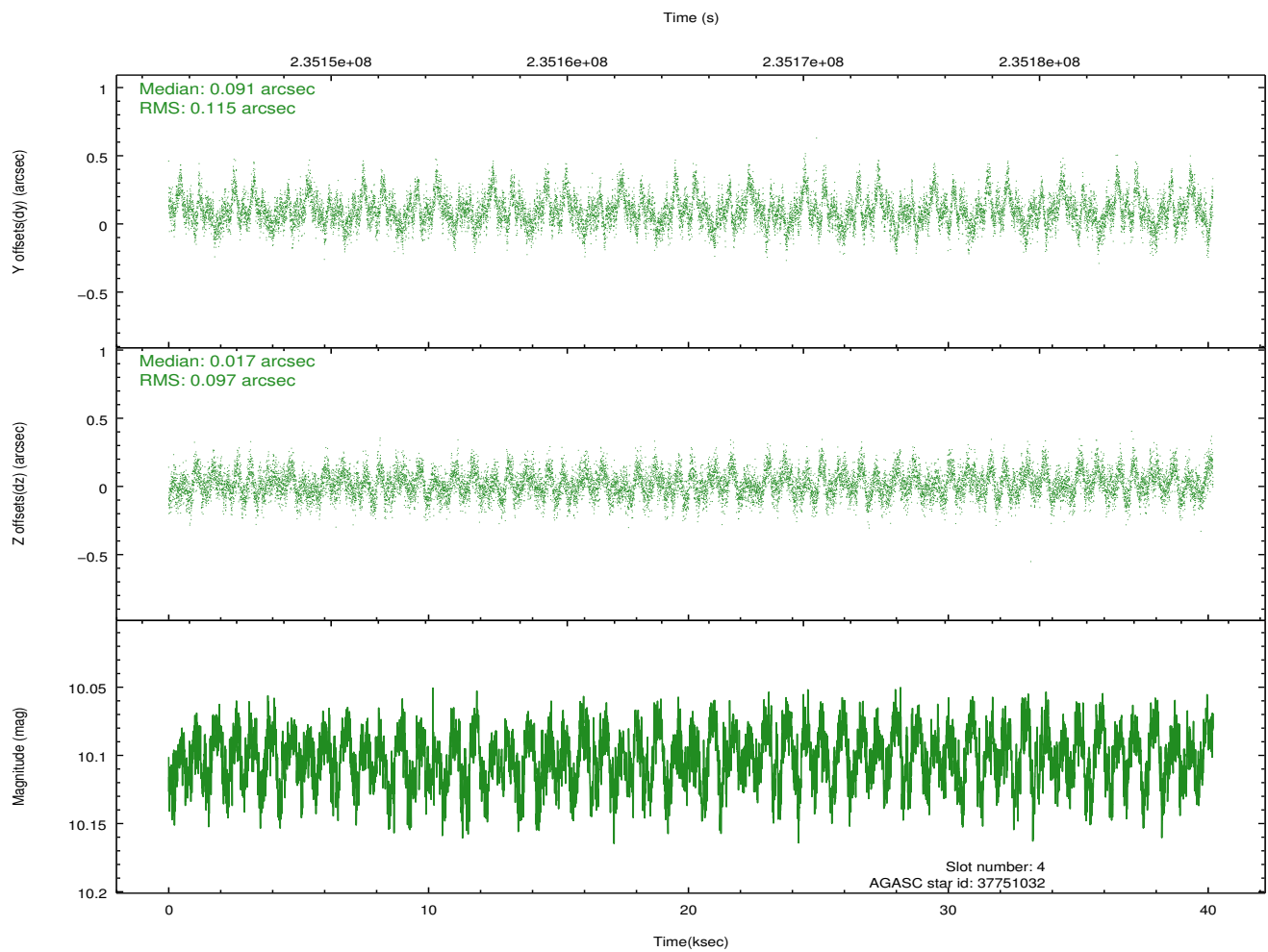
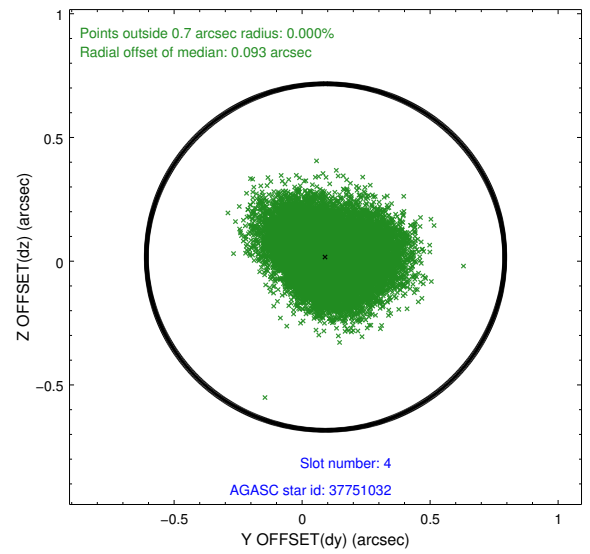
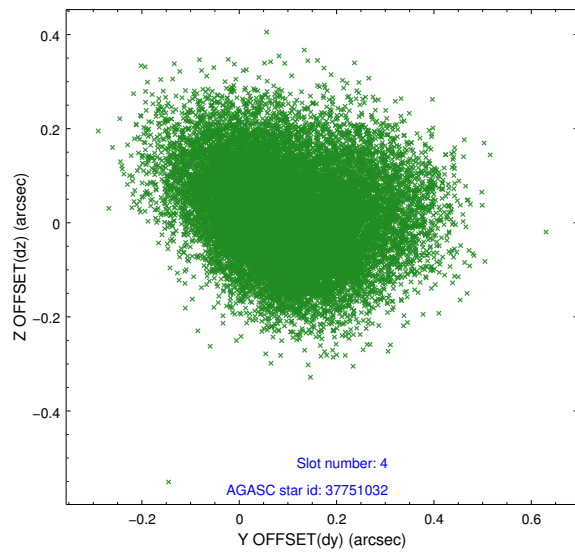
slot	status	id	mag	n_pts	med_dy	med_dz	dr1	dr2	ra	dec	mean_y	mean_z
0	FID	ACIS-S-2	7.10	9802	-0.070	-0.027	0.008	0.013	0.000000	0.000000	-759.24	-1731.44
1	FID	ACIS-S-4	7.21	9802	0.109	0.041	0.006	0.011	0.000000	0.000000	2154.17	177.15
2	FID	ACIS-S-5	7.23	9800	-0.070	-0.005	0.007	0.013	0.000000	0.000000	-1812.10	170.72
3	GUIDE	37749592	10.24	19581	0.154	0.066	0.152	0.249	186.177253	6.631115	2159.20	1295.42
4	GUIDE	37751032	10.10	19577	0.091	0.017	0.159	0.264	186.355124	7.277238	-217.08	885.61
5	GUIDE	37751880	9.64	19580	0.168	0.070	0.131	0.200	185.771871	6.844190	2078.01	-341.28
6	GUIDE	114434008	8.76	19597	-0.135	-0.135	0.078	0.121	185.534773	7.569663	69.30	-2213.52
7	GUIDE	114565080	10.19	19422	-0.290	-0.021	0.138	0.221	186.537681	7.759404	-2065.82	738.52

## 2.4 Star Slots

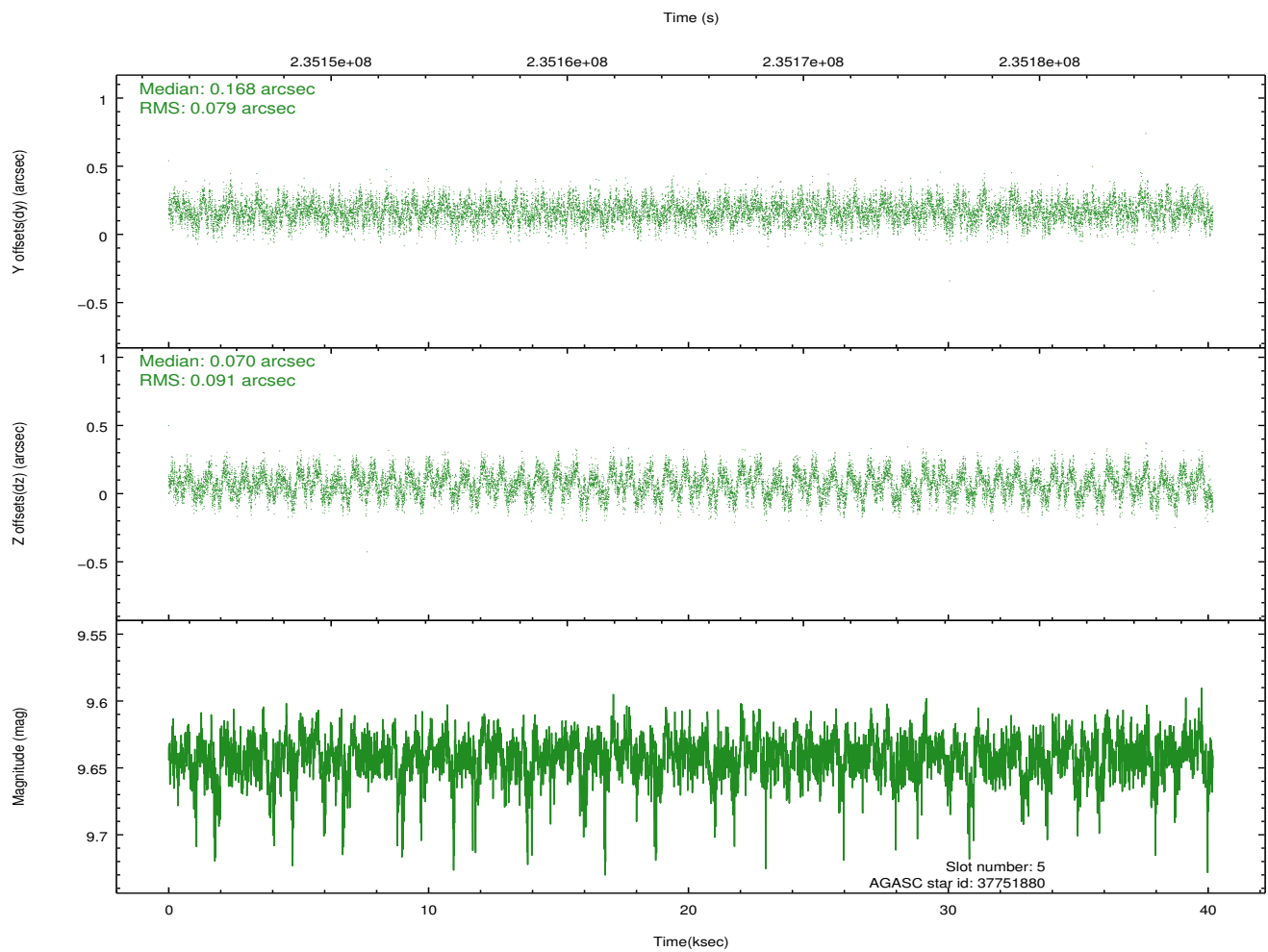
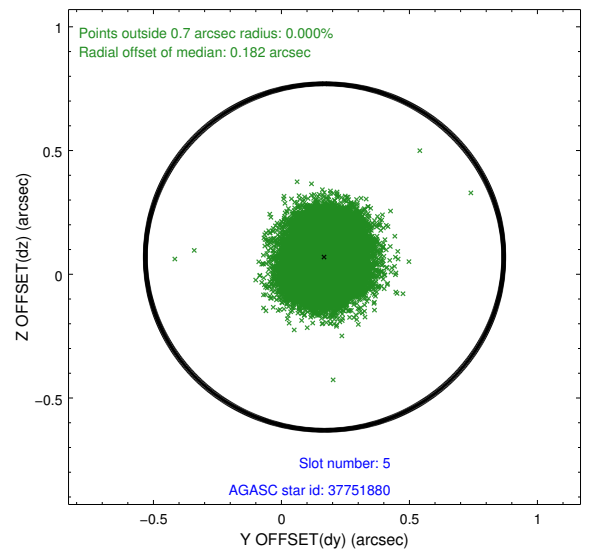
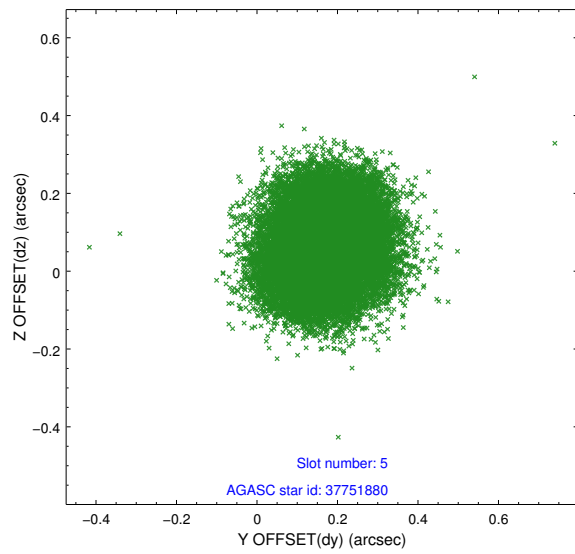
### 2.4.1 Slot 3



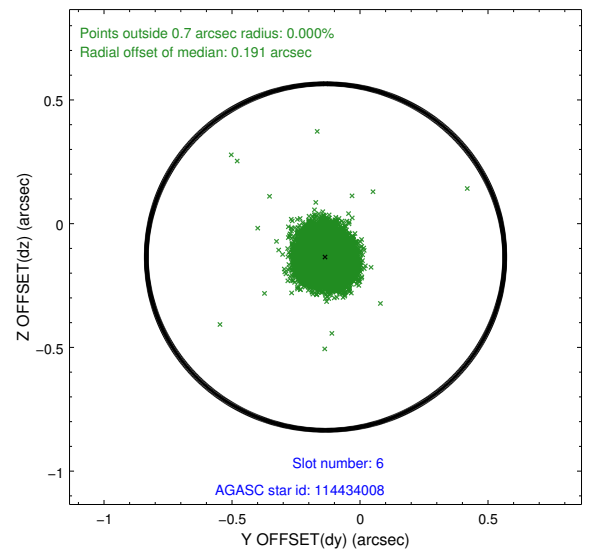
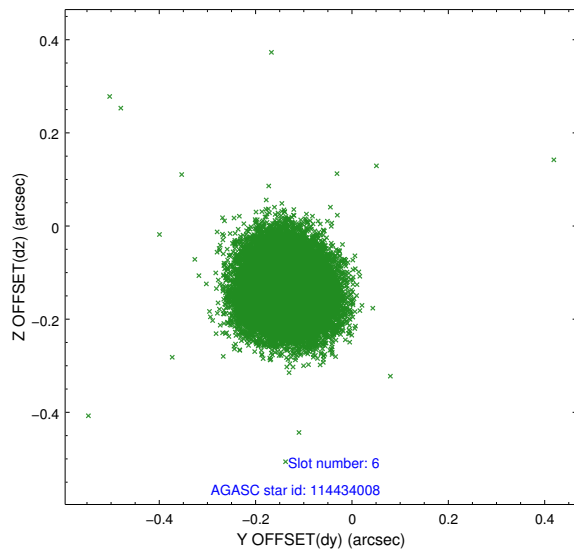
## 2.4.2 Slot 4



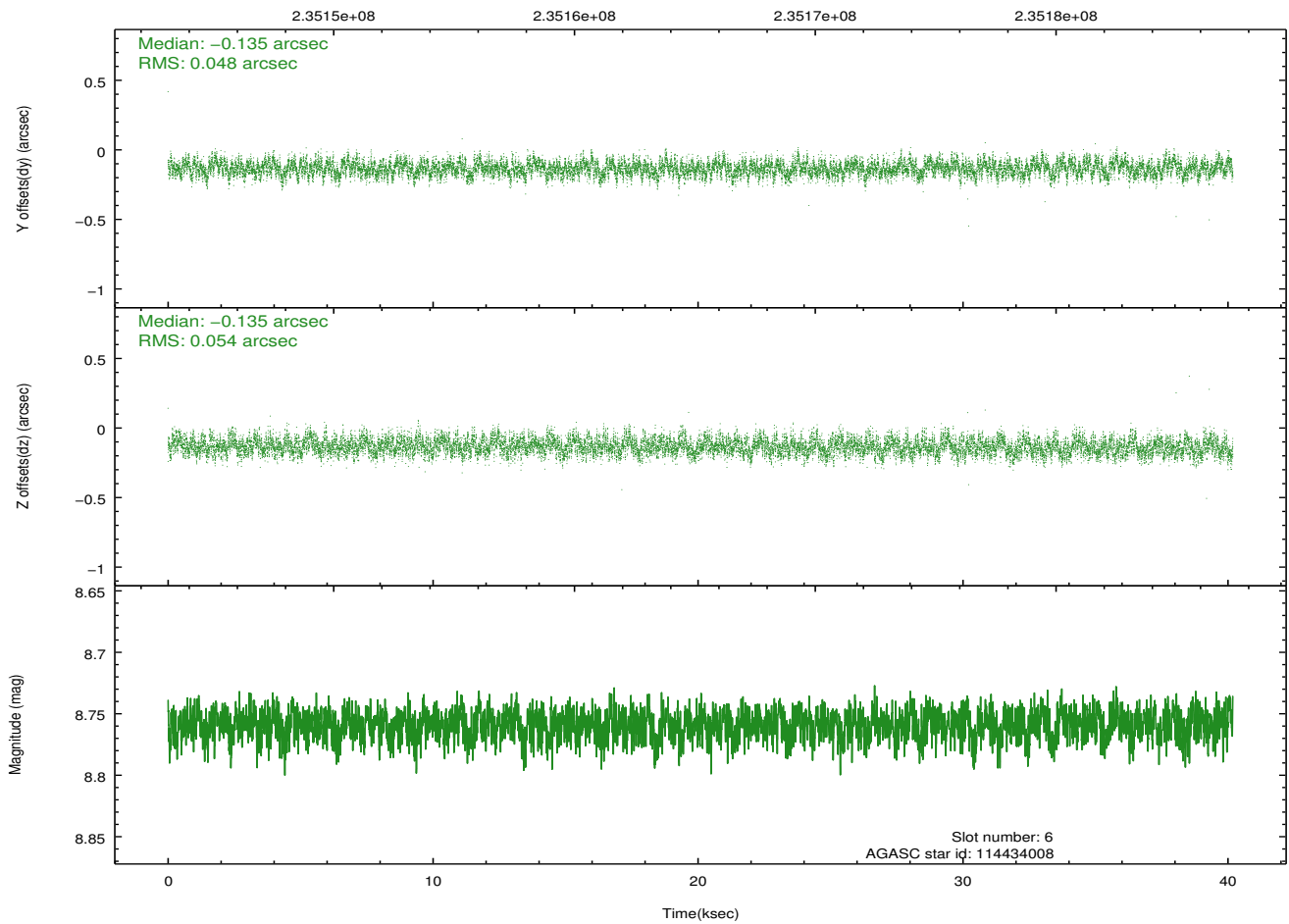
### 2.4.3 Slot 5



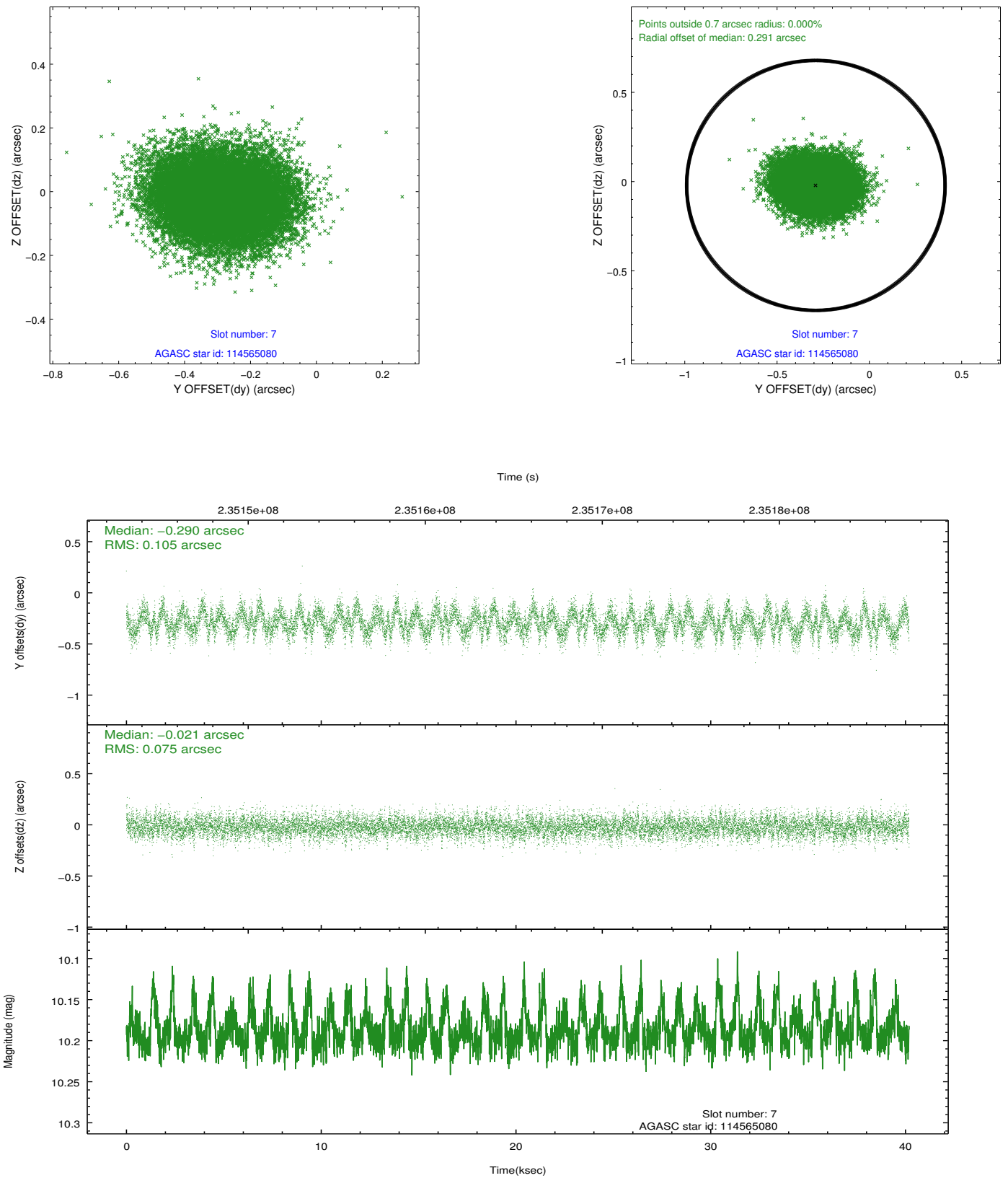
## 2.4.4 Slot 6



Time (s)

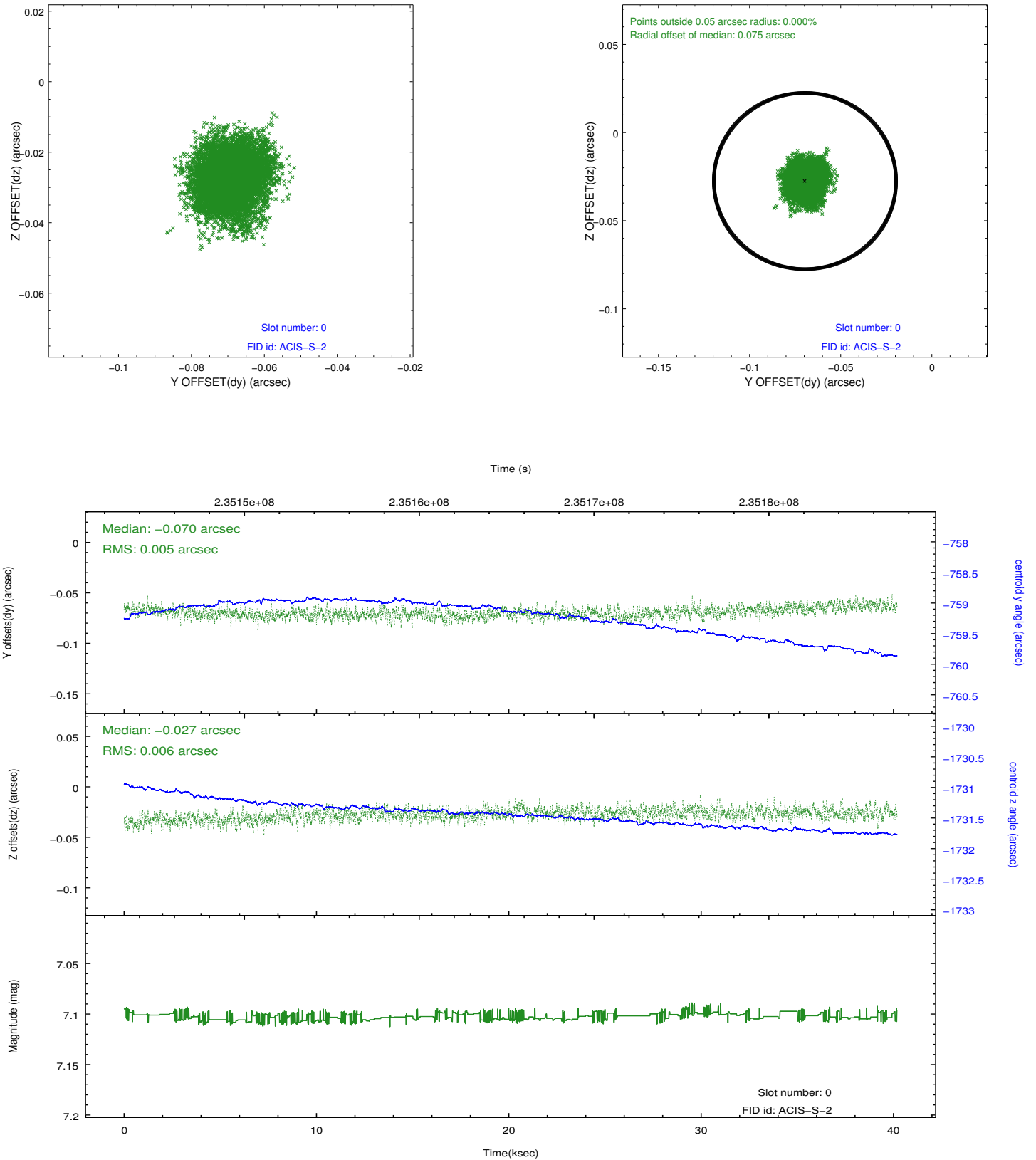


## 2.4.5 Slot 7

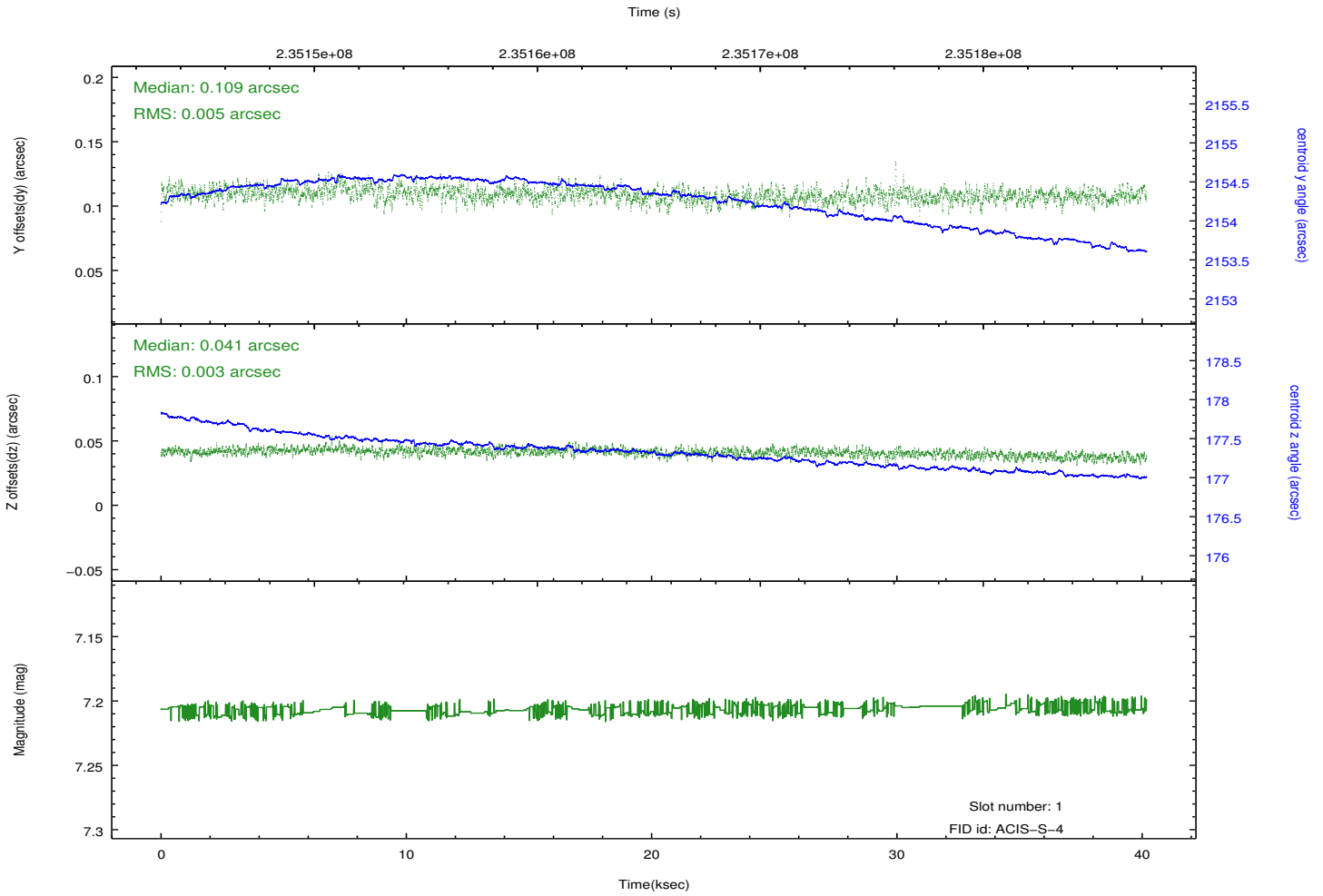
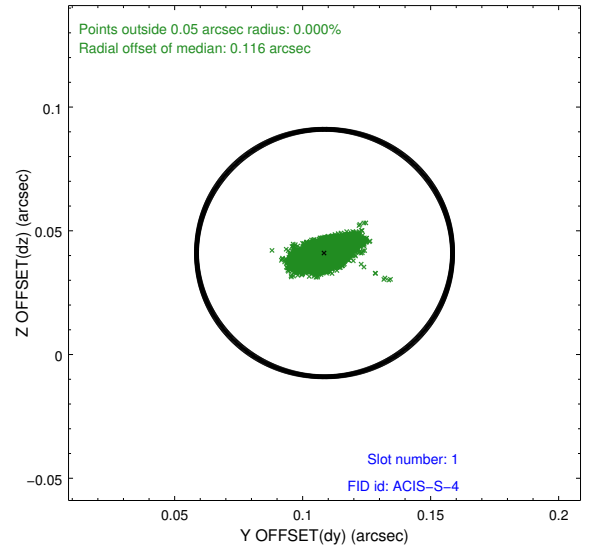
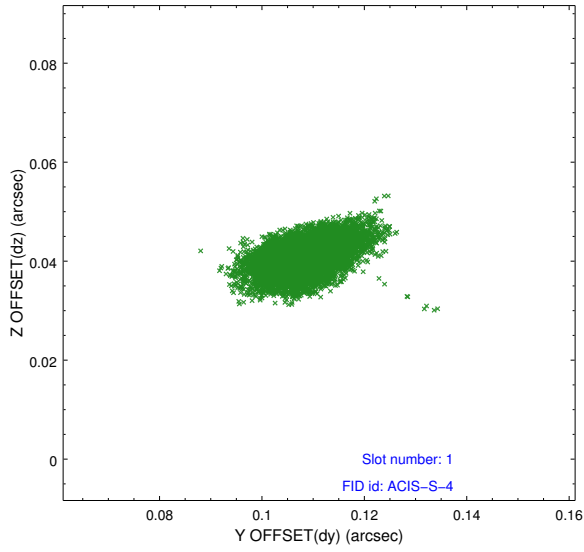


## 2.5 FID Slots

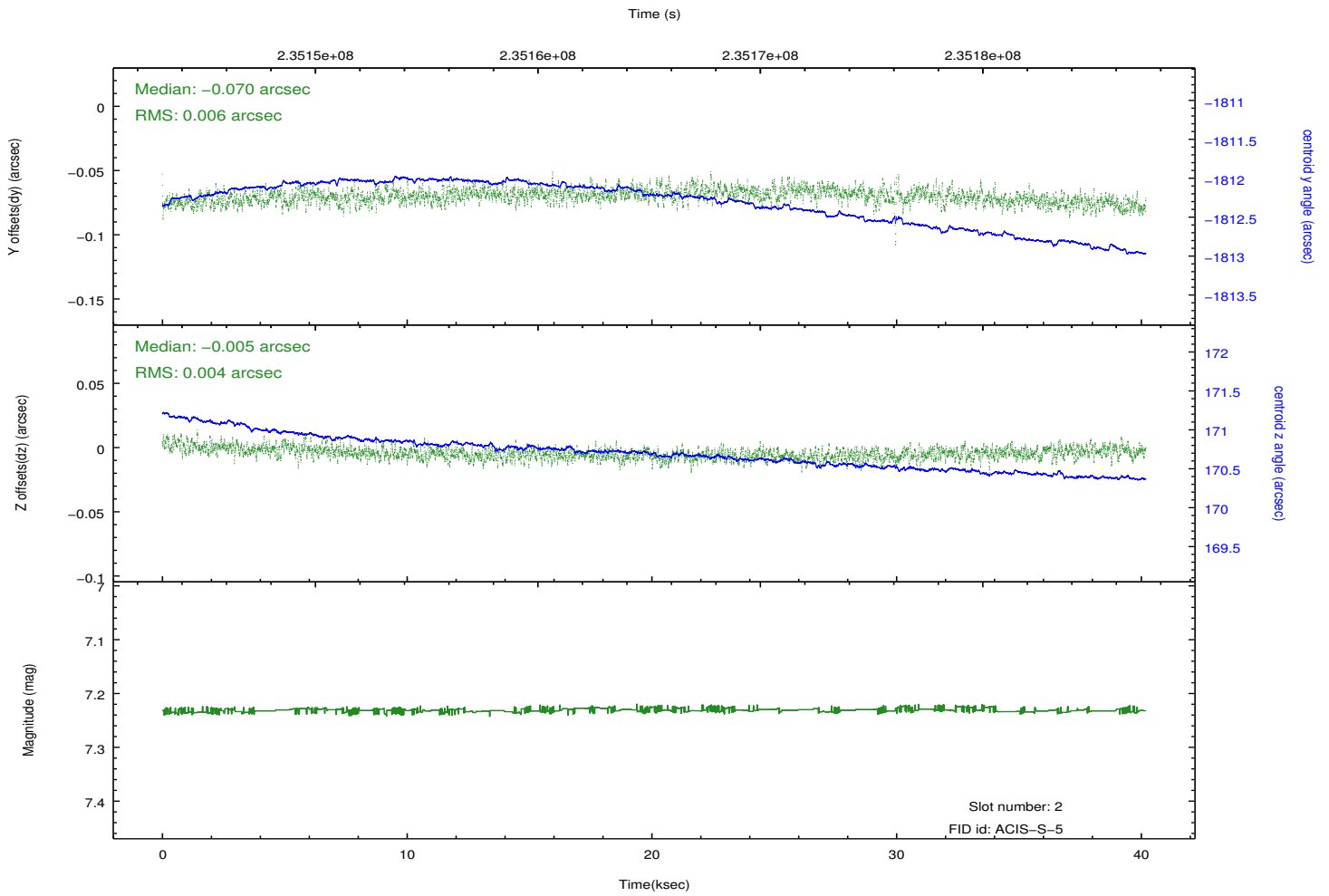
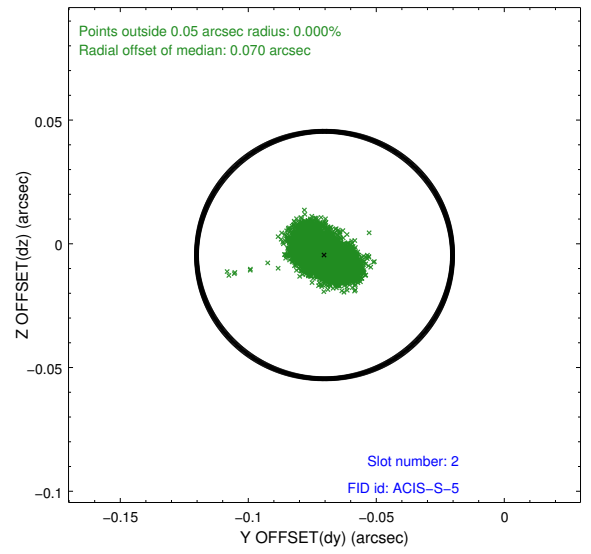
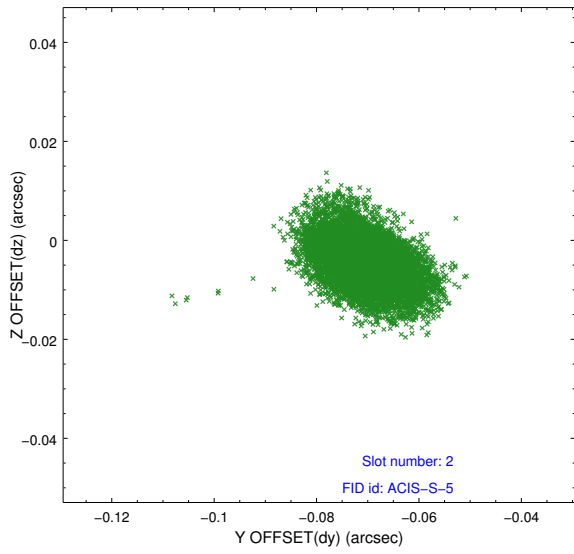
### 2.5.1 Slot 0



## 2.5.2 Slot 1



### 2.5.3 Slot 2



# A Summary

## A.1 Status

V&V Scientist	Jen Lauer
V&V Date (YYYY-MM-DD)	2013.01.17
V&V Edition	1
V&V Disposition and Status	OK
V&V Charge Time	40.08919

## A.2 Comments

Preferred window not met. Monitor constraint met.