

V&V Reference Report

L2 ASCDS Version : 7.6.9

Observation 60883 - L2 Version 001
Chandra X-Ray Center

L2 Processing Date : Oct 19 2006

Contents

1	Front	2
2	OBI	3
2.1	OBI	3
2.1.1	Images	3
2.1.2	Bias	3
2.1.3	Parameters	4
2.1.4	Events	4
2.2	Compared Parameters	5
2.3	Aspect	6
2.4	Star Slots	8
2.5	FID Slots	8
A	Summary	9
A.1	Status	9
A.2	Comments	9

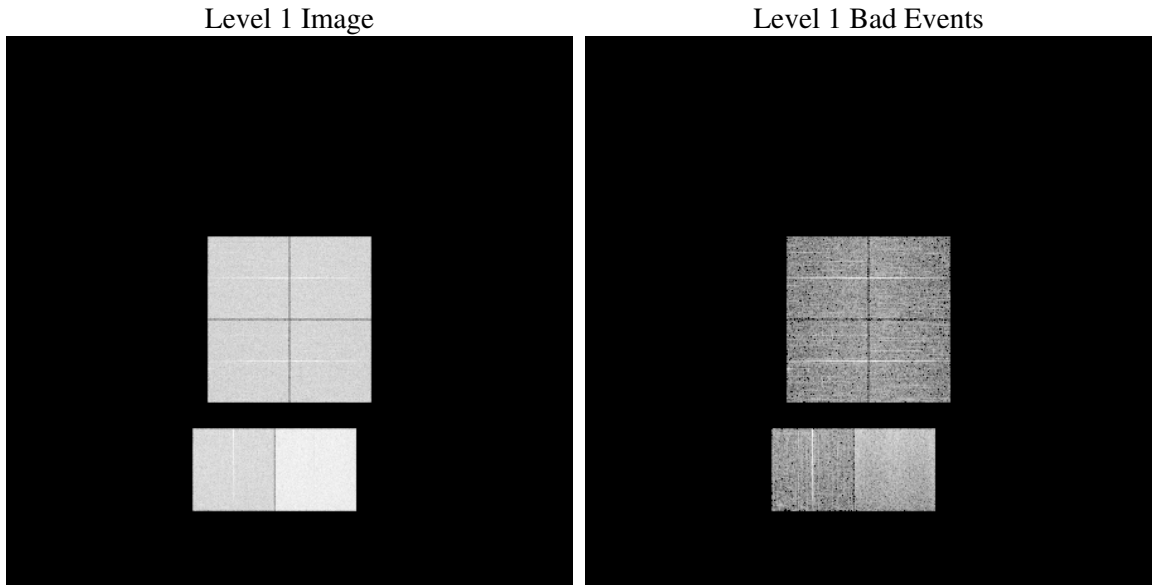
1 Front

seq_num	
obs_id	60883
title	ACIS-012367 diagnostics
observer	CHANDRA engineering request/realtime commanding
object	
dtcycle	0
cycle	P
ra_targ	0.0
dec_targ	0.0
ra_nom	174.99657550885
dec_nom	-3.9716210355414
roll_nom	63.965095667972
revision	2
ontime	7795.1999709606
livetime	7696.4924552224
ontime0	4119.9295735657
ontime1	4233.7470733225
ontime2	3890.2420074046
ontime3	3954.8981190026
ontime6	4353.7464888692
ontime7	7795.1999709606
l2events	1171595

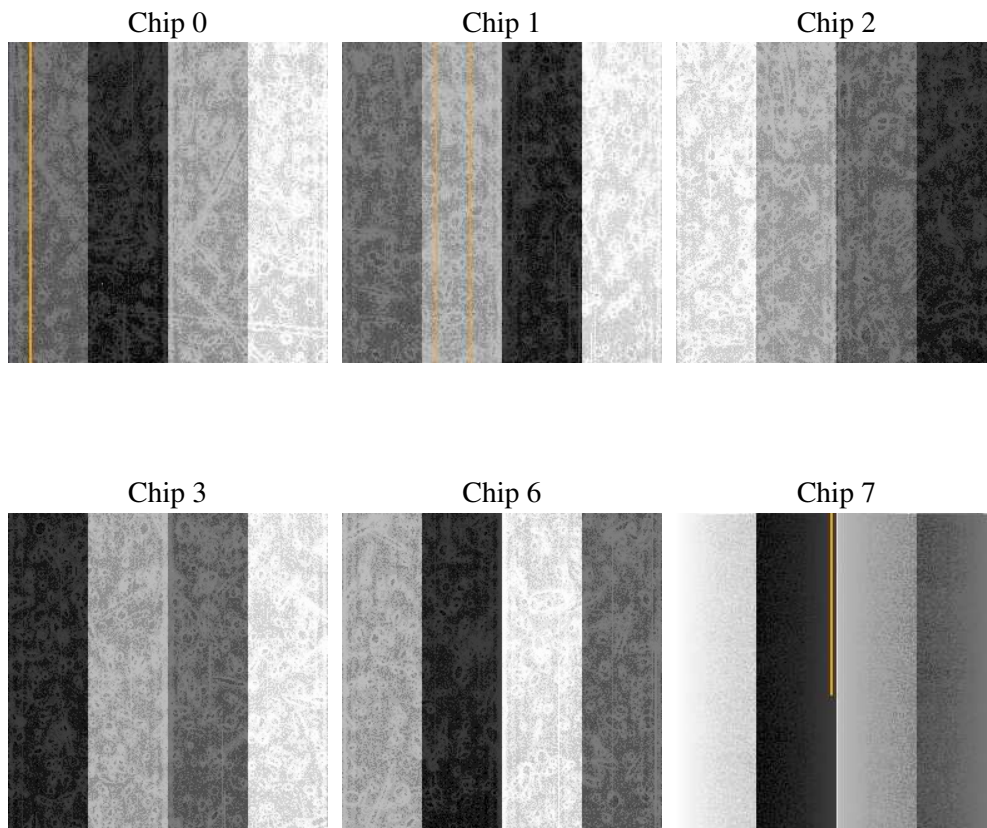
2 OBI

2.1 OBI

2.1.1 Images



2.1.2 Bias



2.1.3 Parameters

obi_num	0
ascdsver	7.6.9
caldbver	3.2.3
date	2006-10-19T03:24:52
revision	2

sched_exp_time	0.0
ontime	7797.8591660261
ontime0	4122.5887686312
ontime1	4236.0233949125
ontime2	3892.4772889912
ontime3	3957.2975606024
ontime6	4355.9407304823
ontime7	7797.8591660261
l1events	1427441

2.1.4 Events

	ccd 0	ccd 1	ccd 2	ccd 3	ccd 6	ccd 7
level 1 events	203274	208972	196453	200063	226692	391987
rejected events	27737	28068	28520	29650	31995	56660
rejected %	13%	13%	14%	14%	14%	14%

	ccd 0	ccd 1	ccd 2	ccd 3	ccd 6	ccd 7
grade 0 events	97326	100007	94928	96043	106230	57916
	47%	47%	48%	48%	46%	14%
grade 1 events	491	456	558	618	510	132
	0%	0%	0%	0%	0%	0%
grade 2 events	30507	31800	28307	28847	33234	103553
	15%	15%	14%	14%	14%	26%
grade 3 events	11355	11443	10872	11199	12251	23736
	5%	5%	5%	5%	5%	6%
grade 4 events	11446	11600	10898	11179	12332	23509
	5%	5%	5%	5%	5%	5%
grade 5 events	1900	1916	1769	1978	2176	7093
	0%	0%	0%	0%	0%	1%
grade 6 events	25054	26194	23083	23525	30871	126750
	12%	12%	11%	11%	13%	32%
grade 7 events	25195	25556	26038	26674	29088	49298
	12%	12%	13%	13%	12%	12%

2.2 Compared Parameters

Parameter	Planned	Actual	Parameter	Planned	Actual
Instrument	ACIS	ACIS	Obspar format version number	6	6
Detector	ACIS-012367	ACIS-012367	Obspar file type	PREDICTED	ACTUAL
Grating	NONE	NONE	Obspar update status	NONE	UPDATED
Data mode	FAINT	FAINT	On-chip summing requested	N	N
Observation mode	SECONDARY	SECONDARY	Subarray requested	NONE	NONE
Pointing RA	0	174.9965755088527	Alternating exposures requested	N	N
Pointing Dec	0	-3.971621035541367	Primary exposure time	3.2	3.2
Pointing Roll	0.0	63.96509566797232			
SIM focus pos (mm)	-0.782348	-0.7809083437167272			
SIM defocus (mm)	0	0.7524282956875696			
SIM translation stage pos (mm)	-233.592463	250.466033080201			
SIM translation stage offset (mm)	0	-0.01005468664627074			
Observation start time	158771080.583998	158771079.55929			
Observation start date	2003-01-12T15:04:41	2003-01-12T15:04:39			
Observation end time	158806369.285474	158806368.26076			
Observation end date	2003-01-13T00:52:49	2003-01-13T00:52:48			
Read mode	TIMED	TIMED			

2.3 Aspect

2.4 Star Slots

2.5 FID Slots

A Summary

A.1 Status

V&V Scientist	Jen Lauer
V&V Date (YYYY-MM-DD)	2006.10.19
V&V Edition	1
V&V Disposition and Status	OK
V&V Charge Time	7.79519997

A.2 Comments

The ACIS focal plane temperature was above calibration limits for the entire observation.