

V&V Reference Report

L2 ASCDS Version : 8.4.5

Observation 61093 - L2 Version 3
Chandra X-Ray Center

L2 Processing Date : Oct 12 2012

Contents

| | | |
|----------|-------------------------------|----------|
| 1 | Front | 2 |
| 2 | OBI | 3 |
| 2.1 | OBI | 3 |
| 2.1.1 | Images | 3 |
| 2.1.2 | Bias | 3 |
| 2.1.3 | Parameters | 4 |
| 2.1.4 | Events | 4 |
| 2.2 | Compared Parameters | 5 |
| 2.3 | Star Slots | 6 |
| 2.4 | FID Slots | 6 |
| A | Summary | 7 |
| A.1 | Status | 7 |
| A.2 | Comments | 7 |

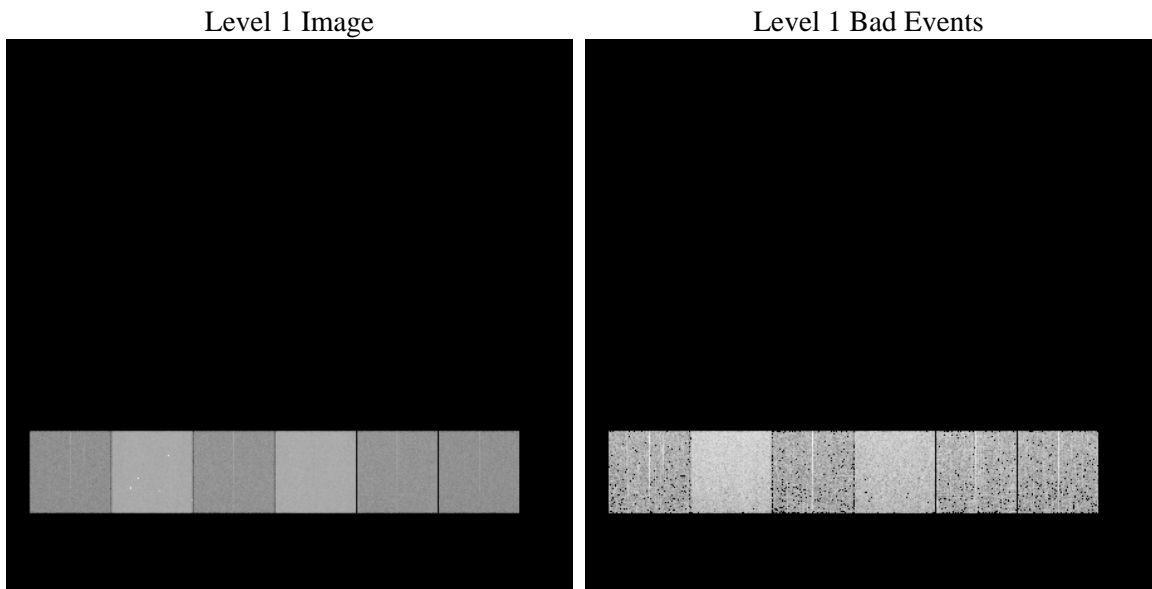
1 Front

| | | |
|----------|---|---|
| seq_num | | Sequence number |
| obs_id | 61093 | Observation id |
| title | ACIS-456789 diagnostics | Proposal title |
| observer | CHANDRA engineering request/realtime commanding | Principal investig |
| object | | Source name |
| dtycle | 0 | |
| cycle | P | events from which exps? Prim/Second/Both |
| ra_targ | 0.0 | Observer's specified target RA [deg] |
| dec_targ | 0.0 | Observer's specified target Dec [deg] |
| ra_nom | 52.935501515137 | Nominal RA [deg] |
| dec_nom | -19.695673933533 | Nominal Dec [deg] |
| roll_nom | 107.62844830134 | Nominal Roll [deg] |
| revision | 3 | Processing version of data |
| ontime | 7270.0388713777 | Sum of GTIs [s] |
| livetime | 7177.9812616965 | Livetime [s] |
| ontime4 | 2829.4240957499 | Sum of GTIs [s] |
| ontime5 | 7791.7922953963 | Sum of GTIs [s] |
| ontime6 | 3023.8860967159 | Sum of GTIs [s] |
| ontime7 | 7270.0388713777 | Sum of GTIs [s] |
| ontime8 | 3046.5729682744 | Sum of GTIs [s] |
| ontime9 | 2833.1768603325 | Sum of GTIs [s] |
| l2events | 1219897 | Number of level 2 events |

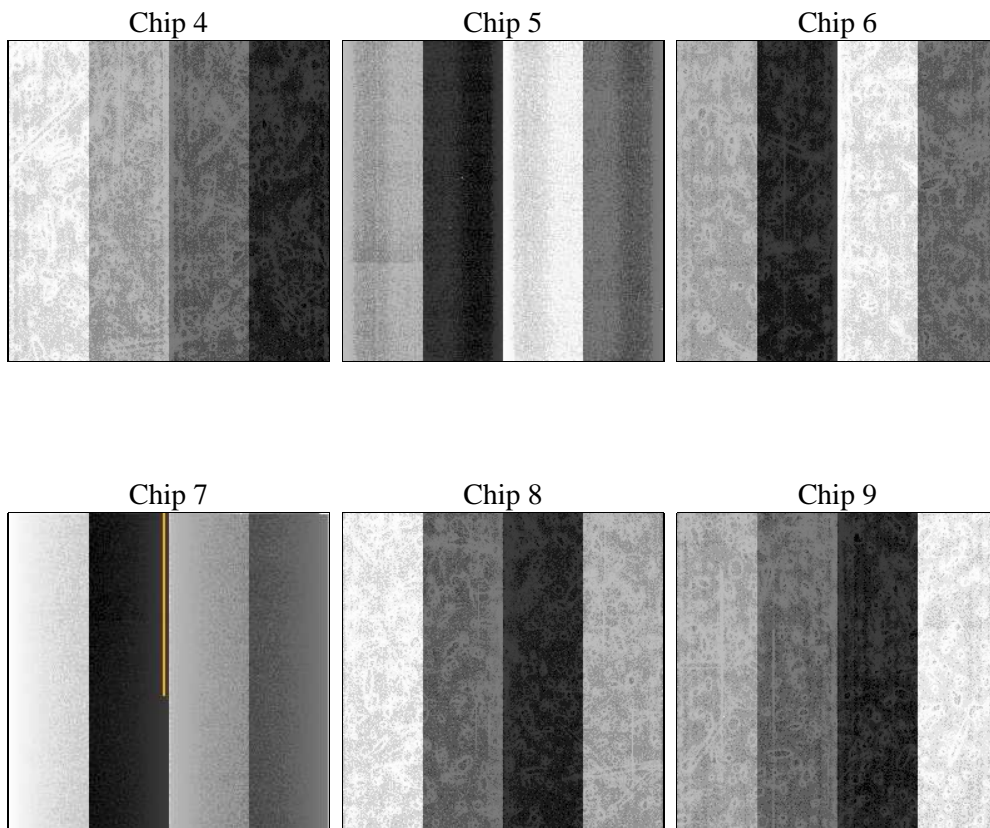
2 OBI

2.1 OBI

2.1.1 Images



2.1.2 Bias



2.1.3 Parameters

| | | | | | |
|----------|---------------------|--------------------------------|----------------|-----------------|---|
| obi_num | 0 | Obi number | sched_exp_time | 0.0 | [s] Scheduled observation exposure time |
| ascdsver | 8.4.5 | Processing system revision | ontime | 7270.0388713777 | Sum of GTIs [s] |
| caldbver | 4.5.2 | | ontime4 | 2829.4240957499 | Sum of GTIs [s] |
| date | 2012-10-12T10:52:14 | Date and time of file creation | ontime5 | 7791.7922953963 | Sum of GTIs [s] |
| revision | 3 | Processing version of data | ontime6 | 3023.8860967159 | Sum of GTIs [s] |
| | | | ontime7 | 7270.0388713777 | Sum of GTIs [s] |
| | | | ontime8 | 3046.5729682744 | Sum of GTIs [s] |
| | | | ontime9 | 2833.1768603325 | Sum of GTIs [s] |
| | | | l1events | 1442897 | Number of level 1 events |

2.1.4 Events

| | ccd 4 | ccd 5 | ccd 6 | ccd 7 | ccd 8 | ccd 9 | | ccd 4 | ccd 5 | ccd 6 | ccd 7 | ccd 8 | ccd 9 |
|-----------------|--------|--------|--------|--------|--------|--------|----------------|-------|--------|-------|--------|-------|-------|
| level 1 events | 150895 | 392525 | 171150 | 396572 | 175865 | 155890 | grade 0 events | 76084 | 88568 | 83245 | 91256 | 84519 | 75404 |
| rejected events | 20102 | 47876 | 19124 | 36373 | 22960 | 19288 | | 50% | 22% | 48% | 23% | 48% | 48% |
| rejected % | 13% | 12% | 11% | 9% | 13% | 12% | grade 1 events | 492 | 337 | 357 | 226 | 403 | 408 |
| | | | | | | | | 0% | 0% | 0% | 0% | 0% | 0% |
| | | | | | | | grade 2 events | 20901 | 119707 | 26244 | 79369 | 26662 | 23697 |
| | | | | | | | | 13% | 30% | 15% | 20% | 15% | 15% |
| | | | | | | | grade 3 events | 8700 | 22392 | 9332 | 36588 | 9568 | 8813 |
| | | | | | | | | 5% | 5% | 5% | 9% | 5% | 5% |
| | | | | | | | grade 4 events | 8553 | 22307 | 9504 | 36009 | 9635 | 8591 |
| | | | | | | | | 5% | 5% | 5% | 9% | 5% | 5% |
| | | | | | | | grade 5 events | 1417 | 8833 | 1544 | 7160 | 1596 | 1543 |
| | | | | | | | | 0% | 2% | 0% | 1% | 0% | 0% |
| | | | | | | | grade 6 events | 16555 | 91814 | 23701 | 117124 | 22521 | 20263 |
| | | | | | | | | 10% | 23% | 13% | 29% | 12% | 12% |
| | | | | | | | grade 7 events | 18193 | 38567 | 17223 | 28840 | 20961 | 17171 |
| | | | | | | | | 12% | 9% | 10% | 7% | 11% | 11% |

2.2 Compared Parameters

| Parameter | Planned | Actual | Parameter | Planned | Actual |
|-----------------------------------|---------------------|----------------------|---------------------------------|-----------|---------|
| Instrument | ACIS | ACIS | Obspar format version number | 7 | 7 |
| Detector | ACIS-456789 | ACIS-456789 | Obspar file type | PREDICTED | ACTUAL |
| Grating | NONE | NONE | Obspar update status | NONE | UPDATED |
| Data mode | FAINT | FAINT | On-chip summing requested | N | N |
| Observation mode | SECONDARY | SECONDARY | Subarray requested | NONE | NONE |
| [deg] Pointing RA | 0 | 52.93550151513656 | Alternating exposures requested | N | N |
| [deg] Pointing Dec | 0 | -19.69567393353255 | [s] Primary exposure time | 3.2 | 3.2 |
| [deg] Pointing Roll | 0.0 | 107.6284483013401 | | | |
| [mm] SIM focus pos | -0.684267 | -0.6828225247311905 | | | |
| [mm] SIM defocus | 0 | 0.8505141146731063 | | | |
| [mm] SIM translation stage pos | -190.132523 | 250.466033080201 | | | |
| [mm] SIM translation stage offset | 0 | -0.01005468664627074 | | | |
| [s] Observation start time (MET) | 145063199.464932 | 145063198.44022 | | | |
| Observation start date | 2002-08-06T23:19:59 | 2002-08-06T23:19:58 | | | |
| [s] Observation end time (MET) | 145100195.816454 | 145100194.79174 | | | |
| Observation end date | 2002-08-07T09:36:36 | 2002-08-07T09:36:34 | | | |
| Read mode | TIMED | TIMED | | | |

2.3 Star Slots

2.4 FID Slots

A Summary

A.1 Status

| | |
|----------------------------|-----------------|
| V&V Scientist | Beth Sundheim |
| V&V Date (YYYY-MM-DD) | 2012.10.22 |
| V&V Edition | 1 |
| V&V Disposition and Status | OK |
| V&V Charge Time | 7.2700388713777 |

A.2 Comments