

V&V Reference Report

L2 ASCDS Version : 8.5.1

Observation 6183 - L2 Version 4
Chandra X-Ray Center

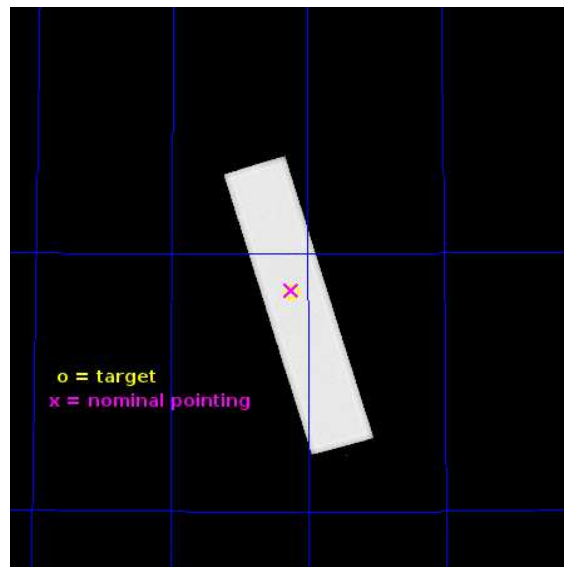
L2 Processing Date : Jun 28 2013

Contents

1	Front	2
2	OBI	3
2.1	OBI	3
2.1.1	Images	3
2.1.2	Parameters	4
2.1.3	Events	4
2.2	Compared Parameters	5
2.3	Aspect	6
2.4	Star Slots	9
2.4.1	Slot 3	9
2.4.2	Slot 4	10
2.4.3	Slot 5	11
2.4.4	Slot 6	12
2.4.5	Slot 7	13
2.5	FID Slots	14
2.5.1	Slot 0	14
2.5.2	Slot 1	15
2.5.3	Slot 2	16
A	Summary	17
A.1	Status	17
A.2	Comments	17

1 Front

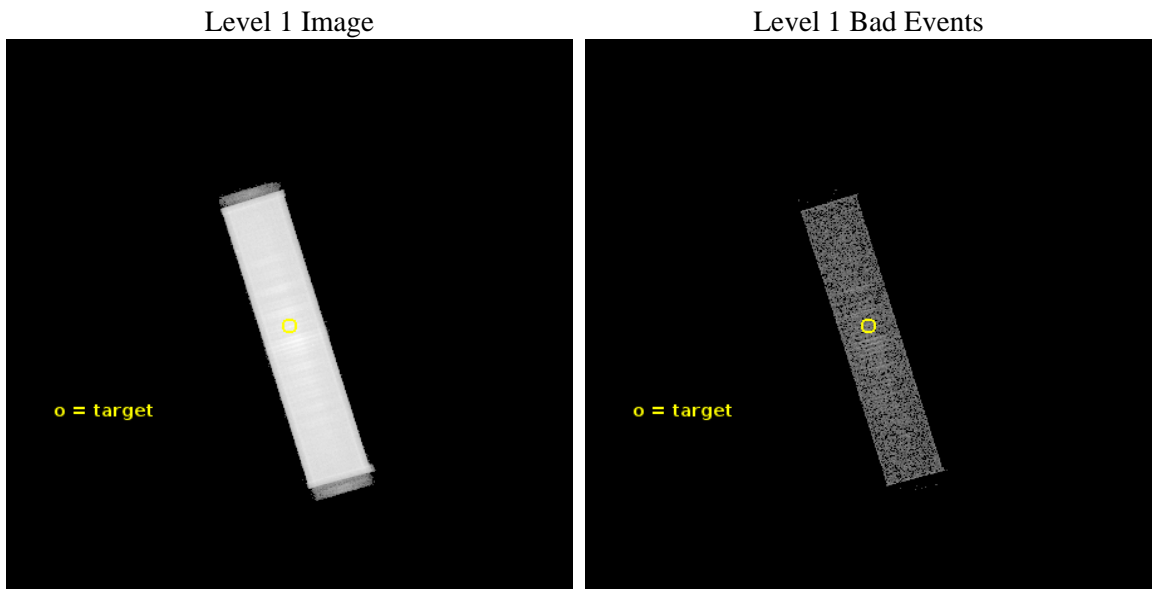
seq_num	500431	Sequence number
obs_id	6183	Observation id
title	THE NEXT GEMINGA: TAKING THE PULSE OF THE EGRET SOURCE 3EG J1835+5918	Proposal title
observer	Prof. Jules Halpern	Principal investigator
object	3EG J1835+5918	Source name
ra_targ	279.057083	Observer's specified target RA [deg]
dec_targ	59.425028	Observer's specified target Dec [deg]
ra_nom	279.05998543809	Nominal RA [deg]
dec_nom	59.42951795749	Nominal Dec [deg]
roll_nom	73.063596492103	Nominal Roll [deg]
revision	4	Processing version of data
ontime	45162.783297211	[s]
livetime	44997.643161527	Ontime multiplied by DTCOR
l2events	1636489	Number of level 2 events



2 OBI

2.1 OBI

2.1.1 Images



2.1.2 Parameters

obi_num	0	Obi number	sched_exp_time	45000.000000	[s] Scheduled observation exposure time
ascdsver	10	Processing system revision	ontime	45162.783297211	[s]
caldsver	4.5.7	 	l1events	2502771	Number of level 1 events
date	2013-06-29T02:26:22	Date and time of file creation			
revision	4	Processing version of data			

2.1.3 Events

Level 1 Events

	segment 1	segment 2	segment 3
level 1 events	3311	24994528	
rejected events	94	91781	0
rejected %	2%	3%	0%

2.2 Compared Parameters

Parameter	Planned	Actual	Parameter	Planned	Actual
Instrument	HRC	HRC	Obspar format version number	7	7
Detector	HRC-S	HRC-S	Obspar file type	PREDICTED	ACTUAL
Grating	NONE	NONE	Obspar update status	NONE	UPDATED
Data mode	OBSERVING	OBSERVING			
Observation mode	POINTING	POINTING			
[deg] Pointing RA	279.075402	279.059985438094			
[deg] Pointing Dec	59.401955	59.42951795748954			
[deg] Pointing Roll	72.982985	73.06359649210275			
[mm] SIM focus pos	-1.429586	-1.428180813131781			
[mm] SIM defocus	0.1037507710433287	0.1051558262725154			
[mm] SIM translation stage pos	250.455976	250.466033080201			
[mm] SIM translation stage offset	0	-0.01005468664627074			
[s] Observation start time (MET)	226917559.184000	226916413.27032			
Observation start date	2005-03-11T08:38:15	2005-03-11T08:20:13			
[s] Observation end time (MET)	226962559.184000	226963303.43494			
Observation end date	2005-03-11T21:08:15	2005-03-11T21:21:43			

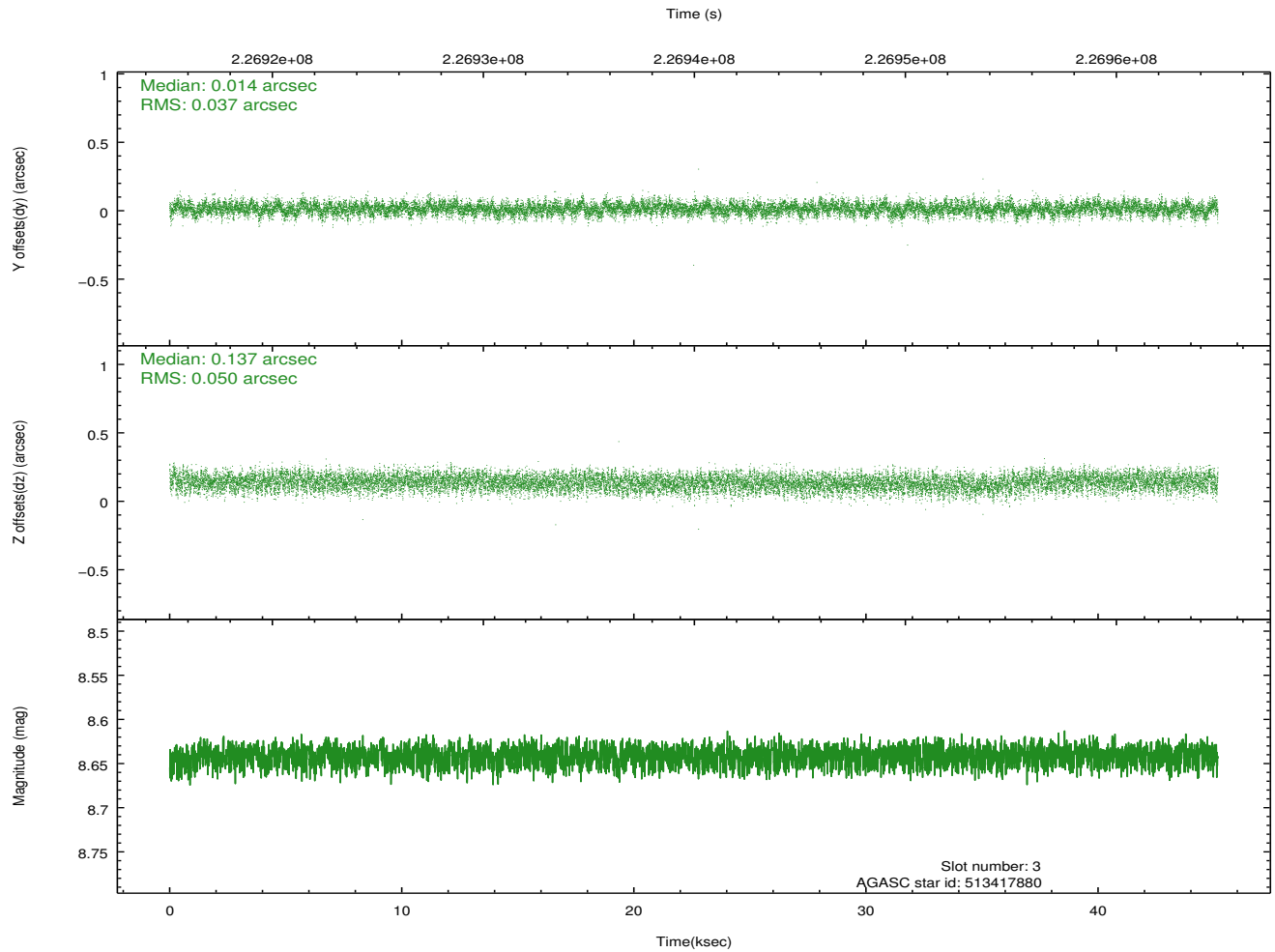
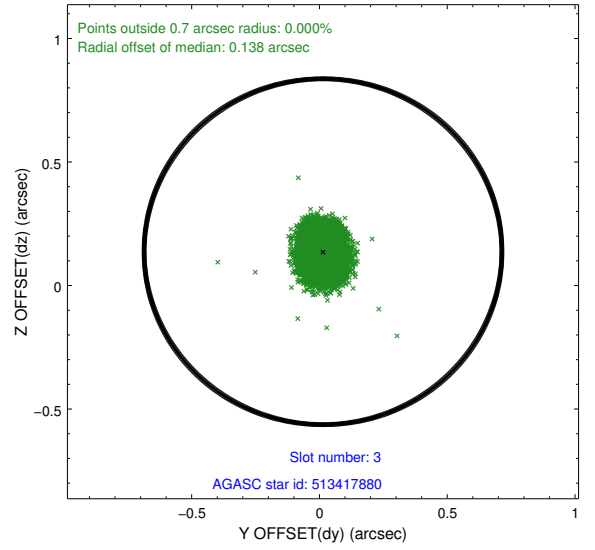
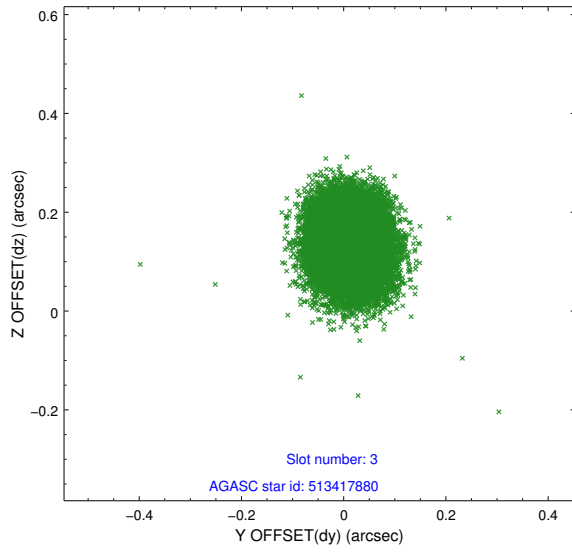
2.3 Aspect

Slot Statistics

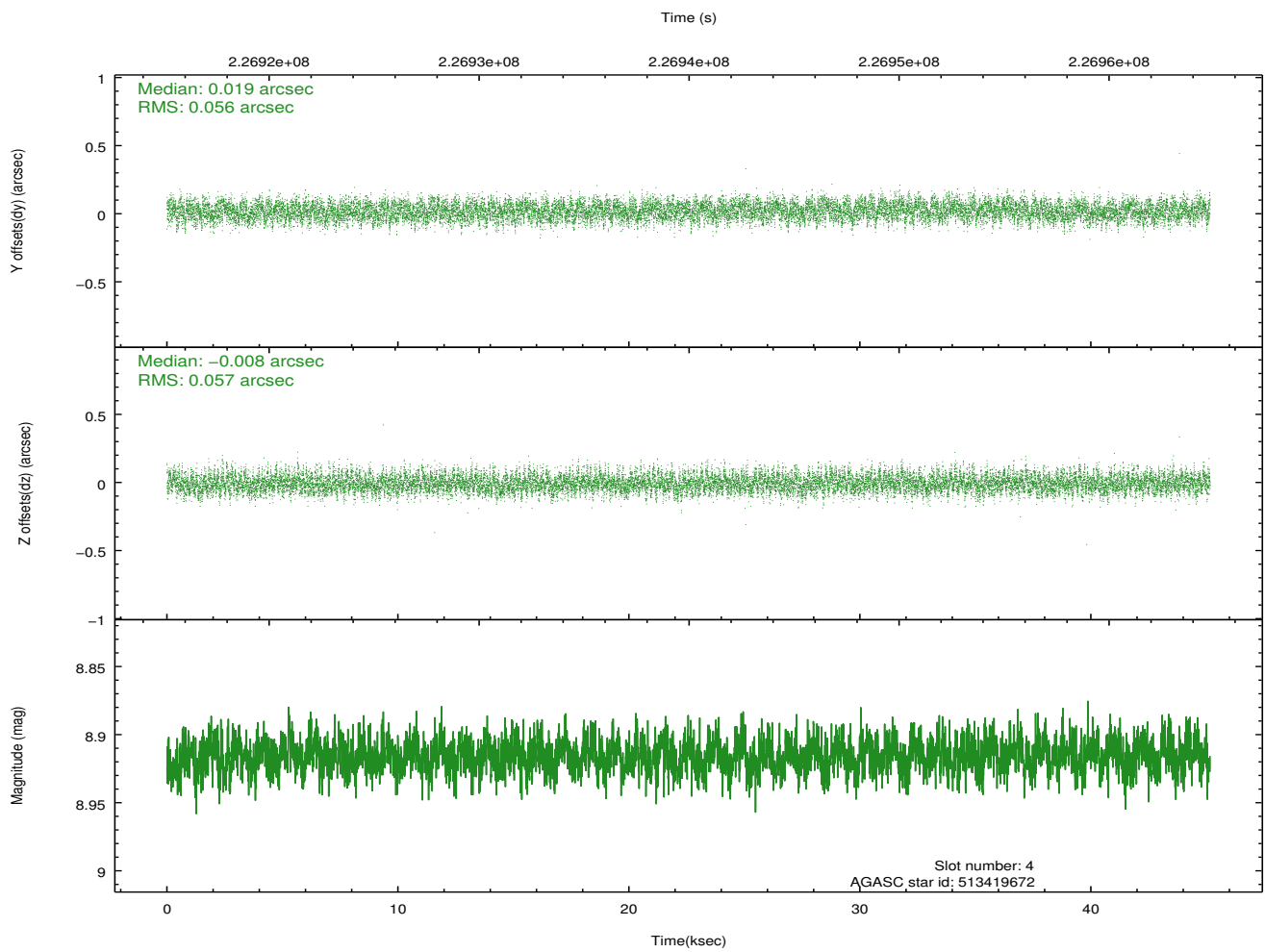
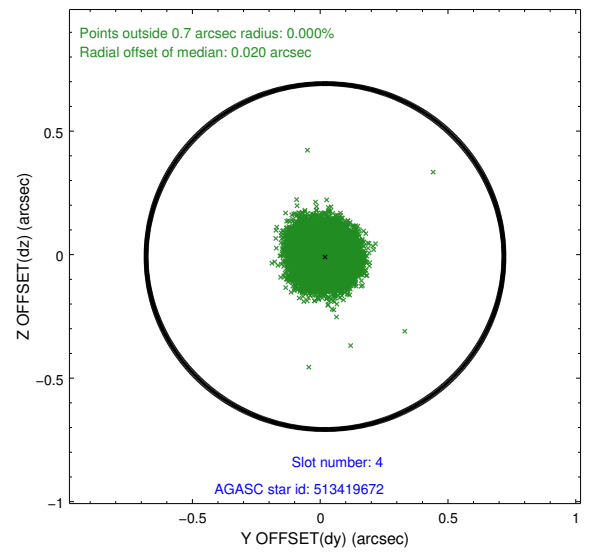
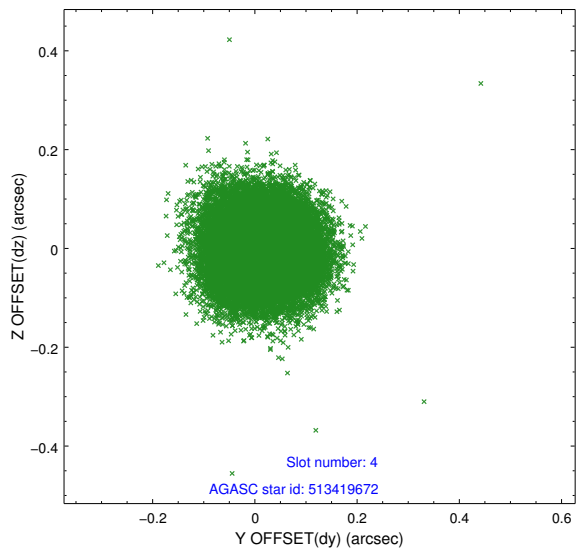
slot	status	id	mag	n_pts	med_dy	med_dz	dr1	dr2	ra	dec	mean_y	mean_z
0	FID	HRC-S-1	7.02	11015	0.113	-0.155	0.031	0.040	0.000000	0.000000	-1160.41	-457.24
1	FID	HRC-S-2	7.03	11016	0.160	-0.105	0.014	0.022	0.000000	0.000000	1239.21	-449.88
2	FID	HRC-S-3	7.04	11016	0.119	-0.042	0.040	0.050	0.000000	0.000000	-1163.02	572.36
3	GUIDE	513417880	8.64	22024	0.014	0.137	0.066	0.107	279.584245	59.253862	-232.28	-1050.28
4	GUIDE	513419672	8.92	22020	0.019	-0.008	0.086	0.135	278.251329	59.888562	1248.01	1938.74
5	GUIDE	513420760	9.04	22021	-0.027	-0.003	0.099	0.156	277.675033	59.117633	-1710.42	2182.53
6	GUIDE	513422640	8.02	22025	-0.047	0.021	0.076	0.124	277.976729	59.419970	-511.58	1947.90
7	GUIDE	513421296	9.07	22013	0.038	-0.146	0.110	0.175	277.849502	59.566976	-66.85	2317.36

2.4 Star Slots

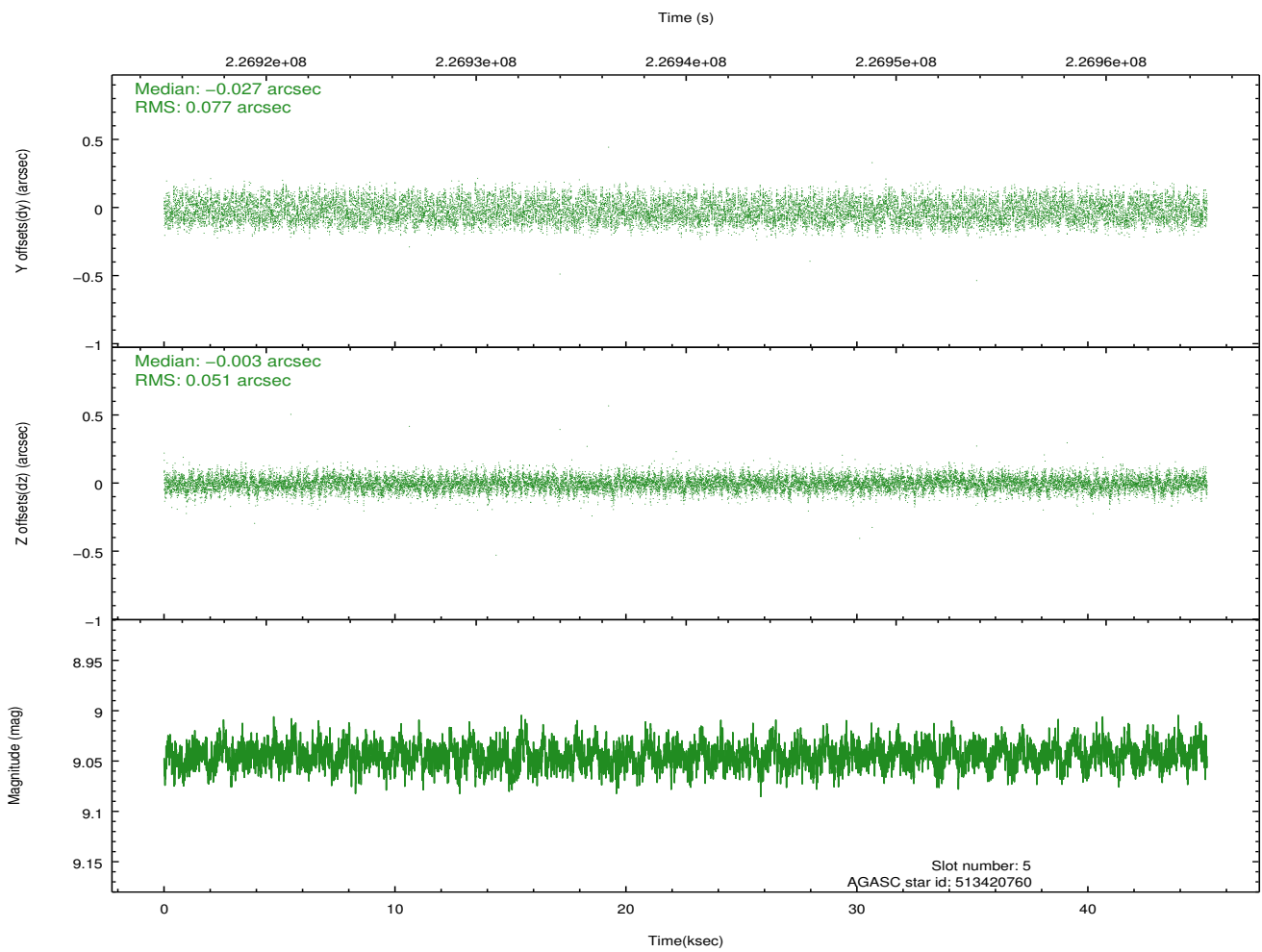
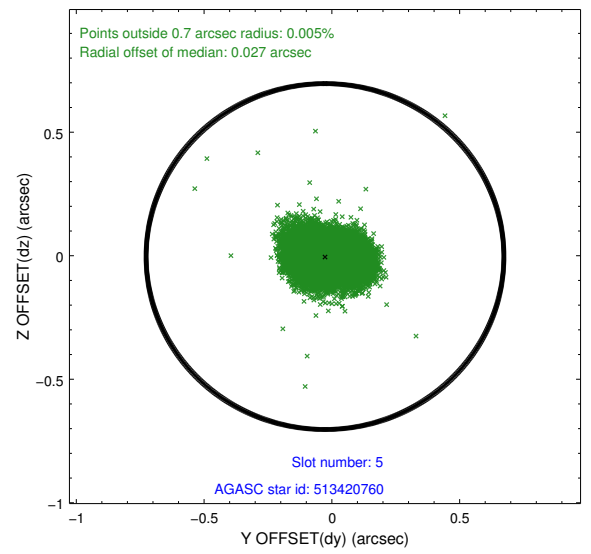
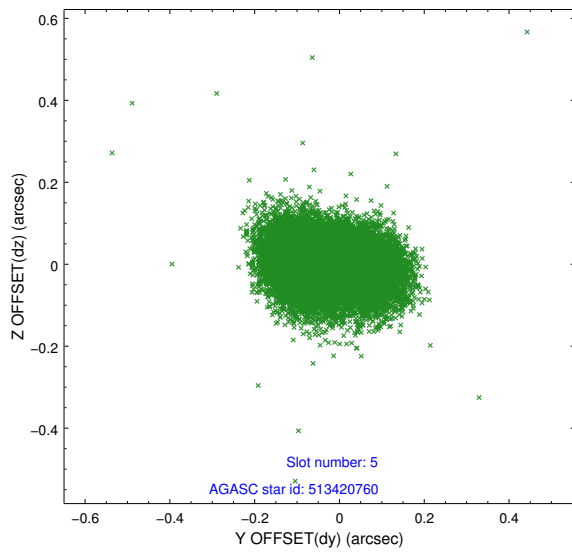
2.4.1 Slot 3



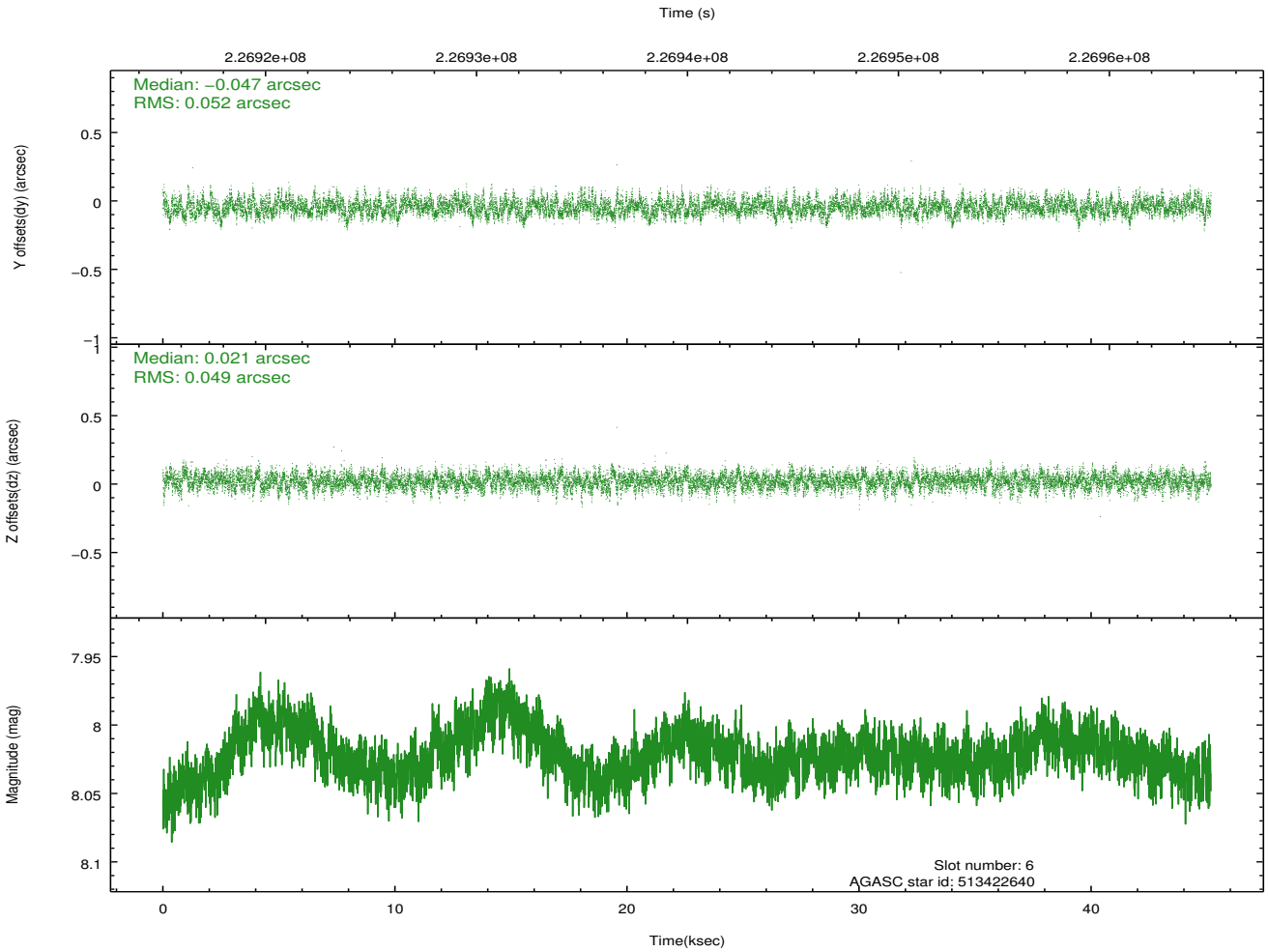
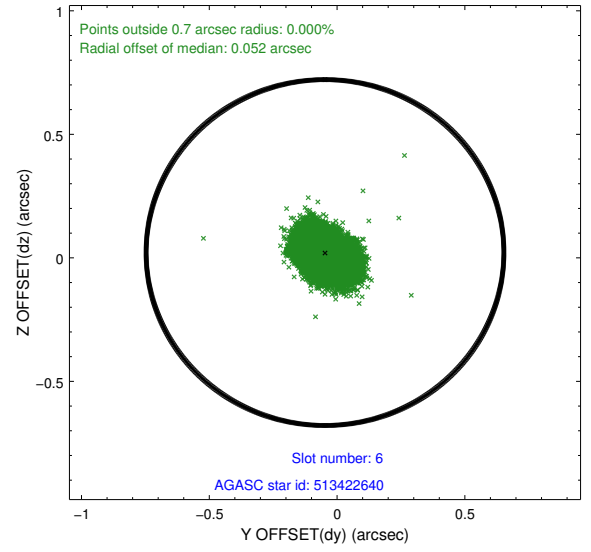
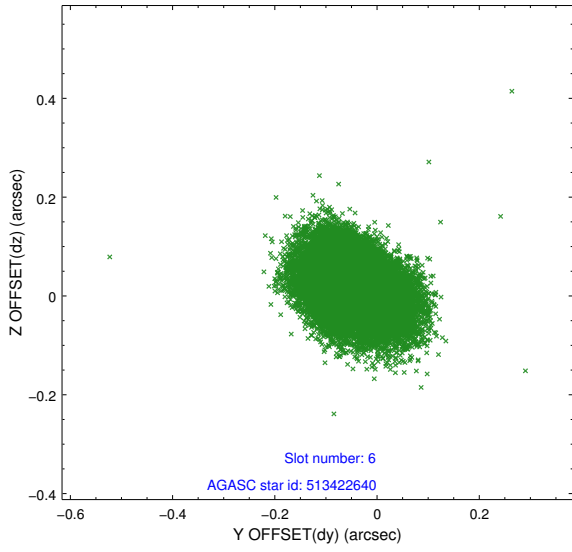
2.4.2 Slot 4



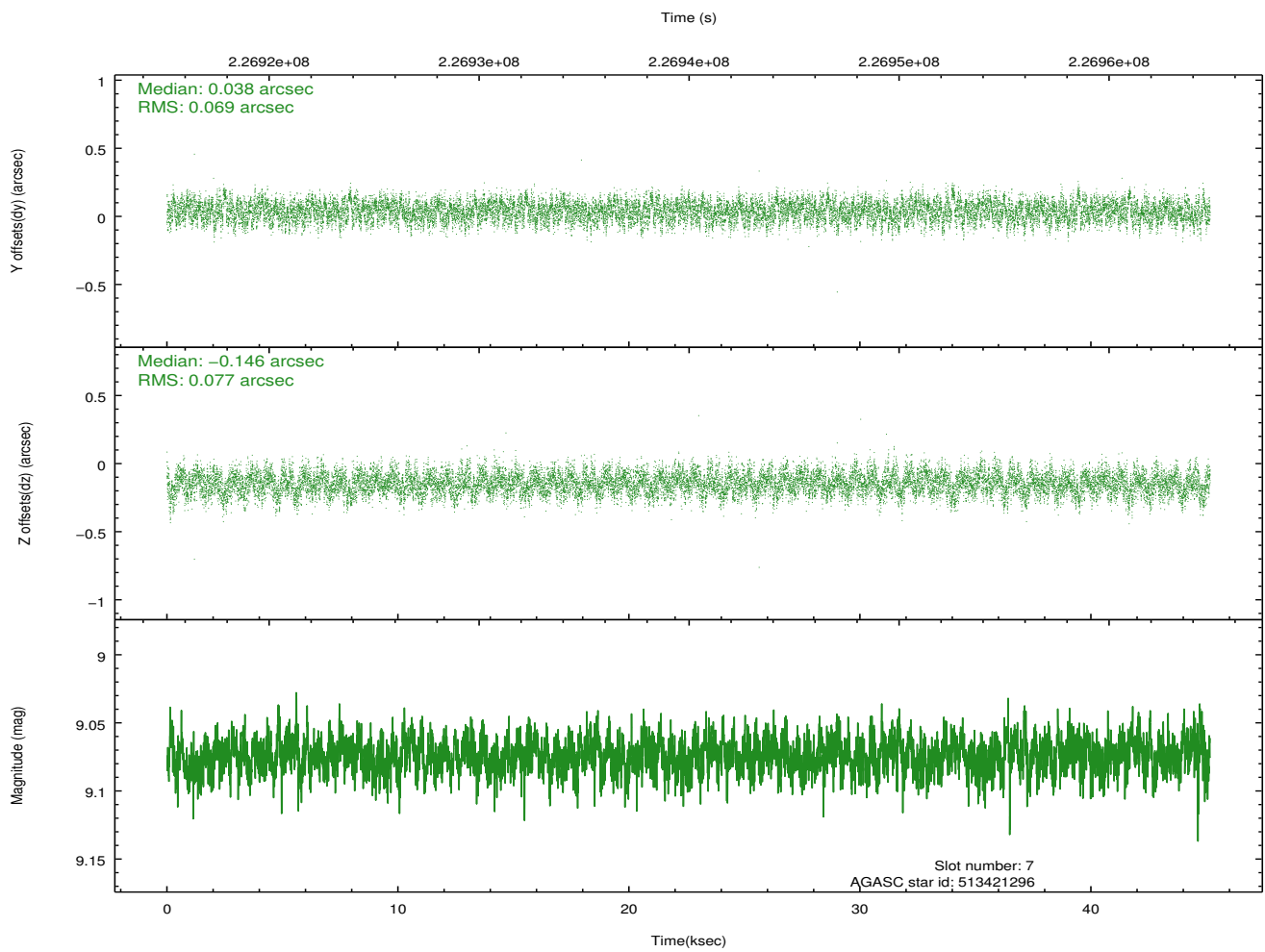
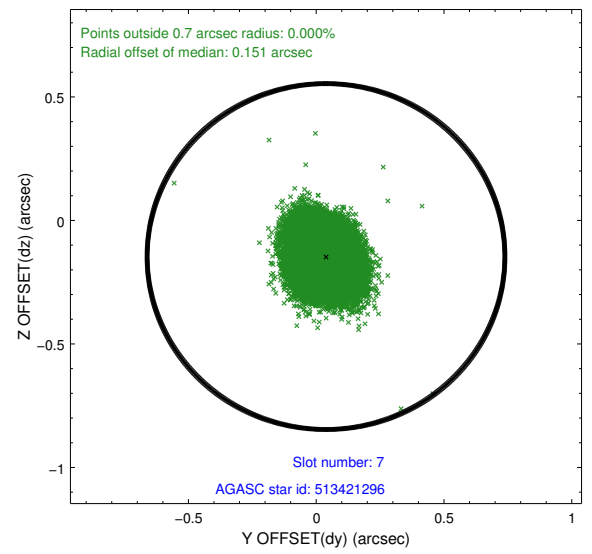
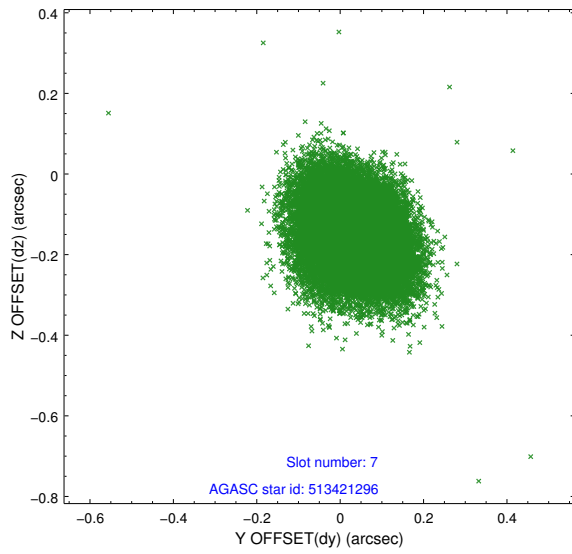
2.4.3 Slot 5



2.4.4 Slot 6

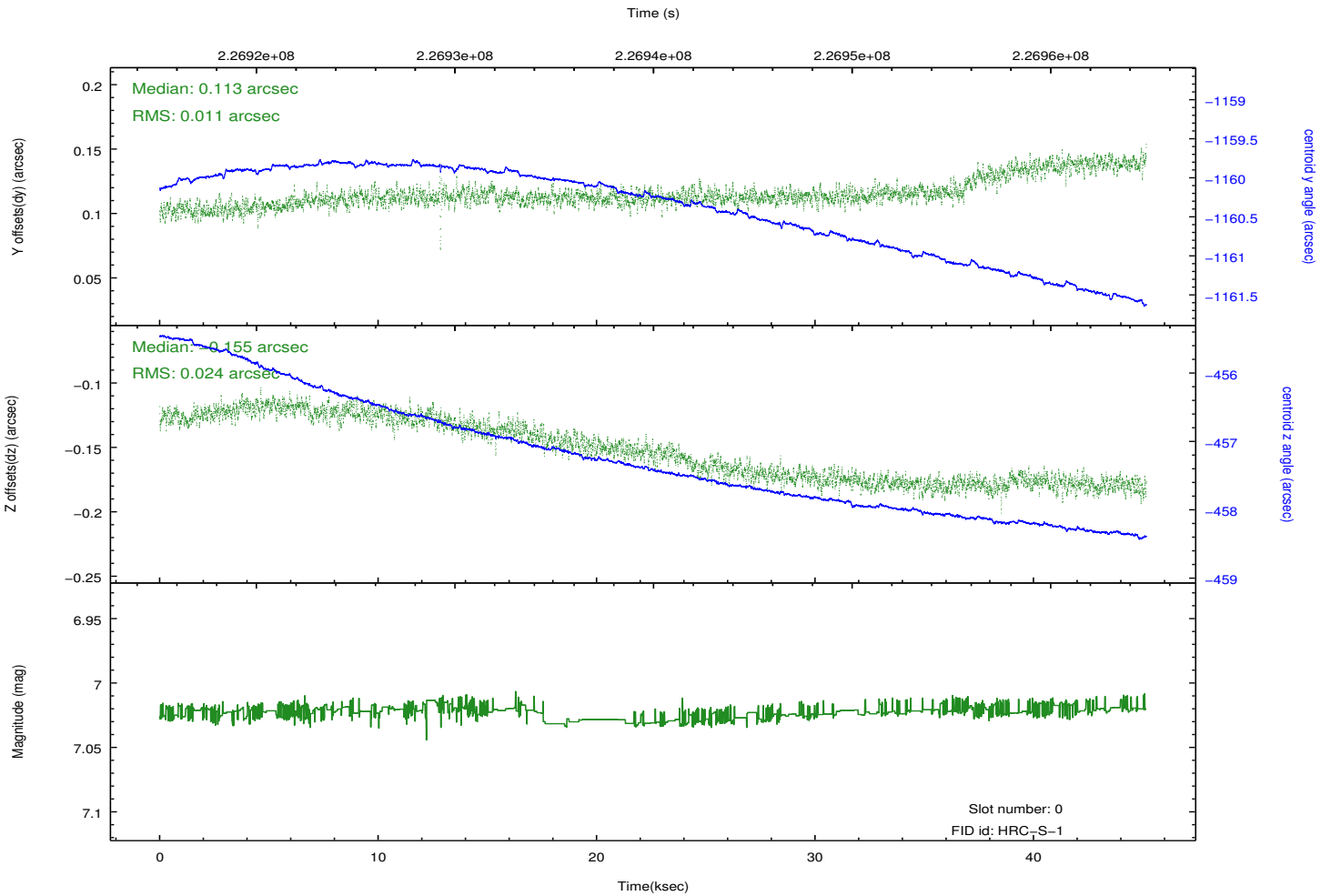
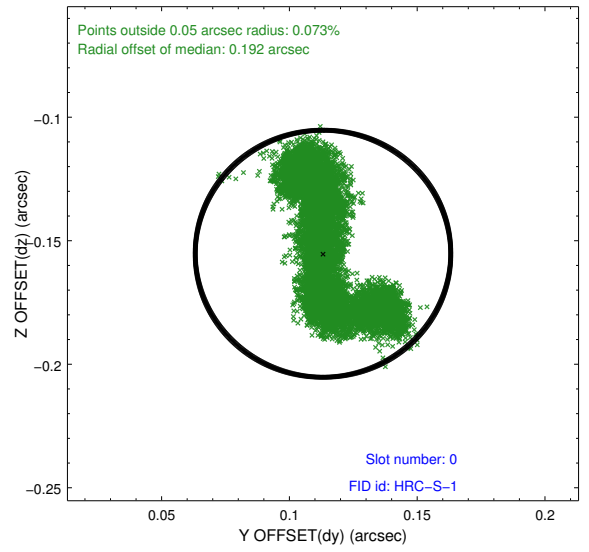
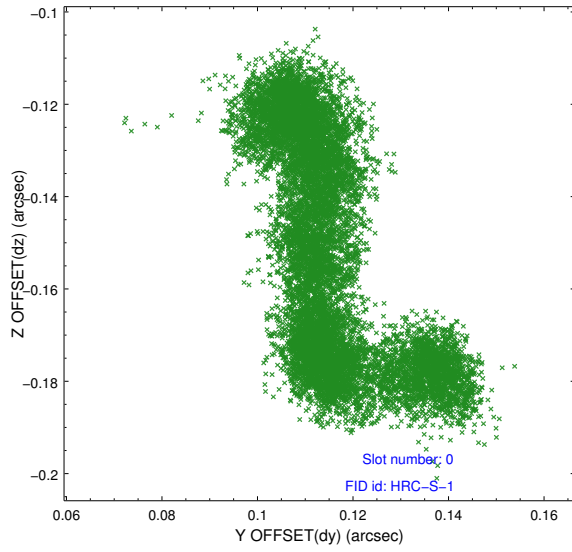


2.4.5 Slot 7

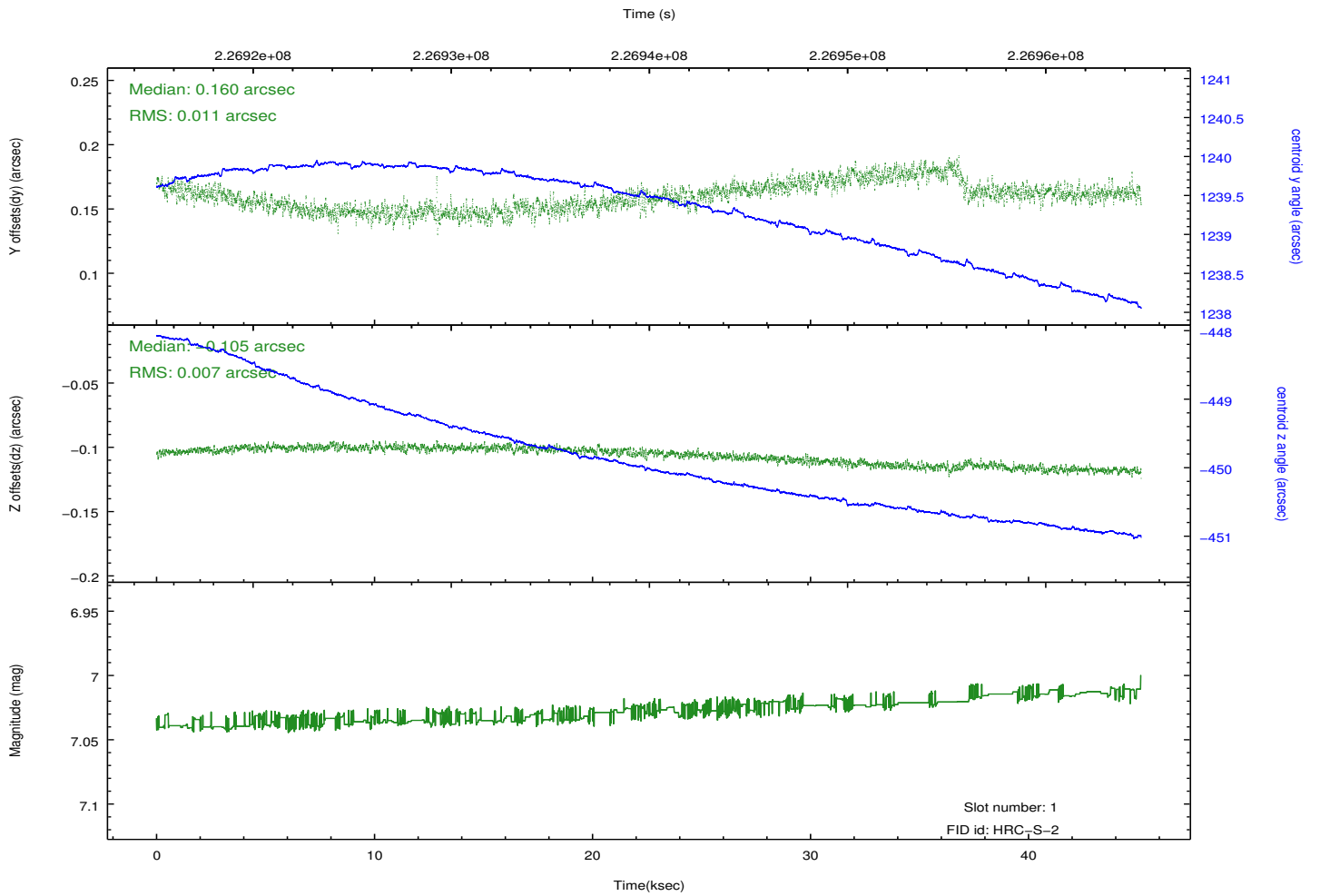
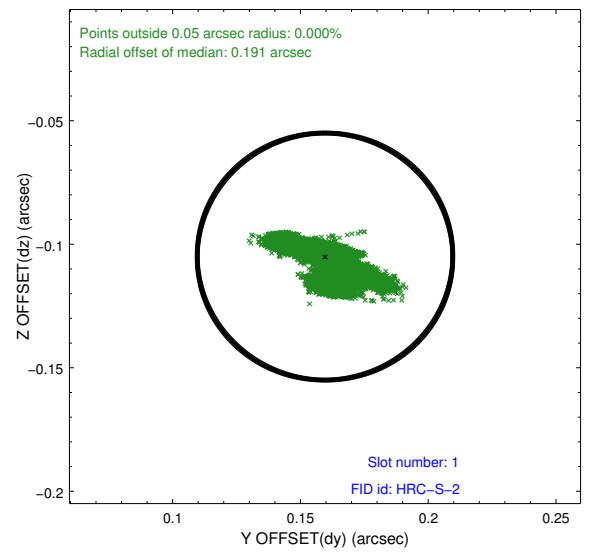
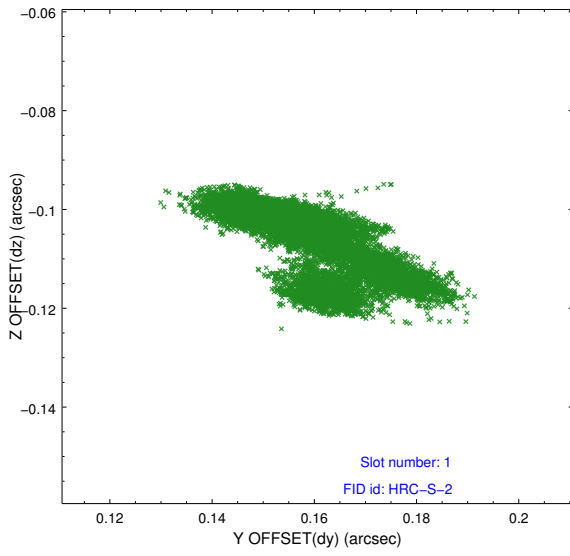


2.5 FID Slots

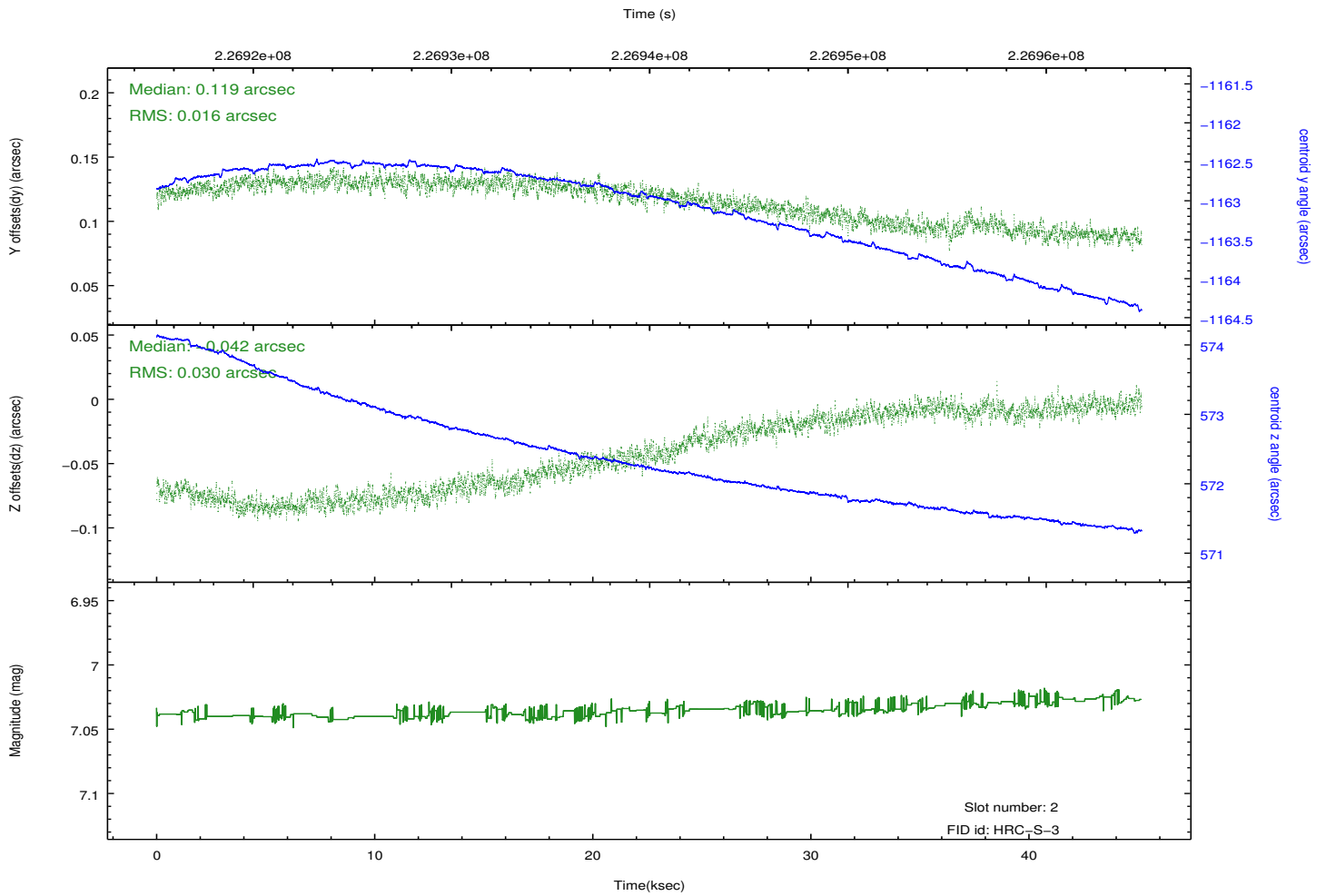
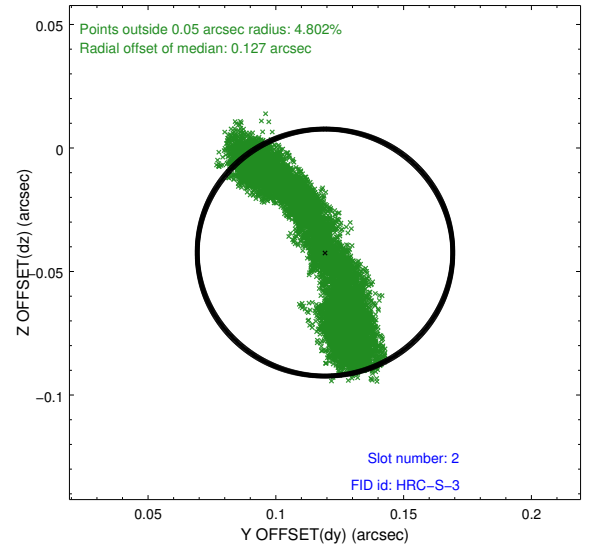
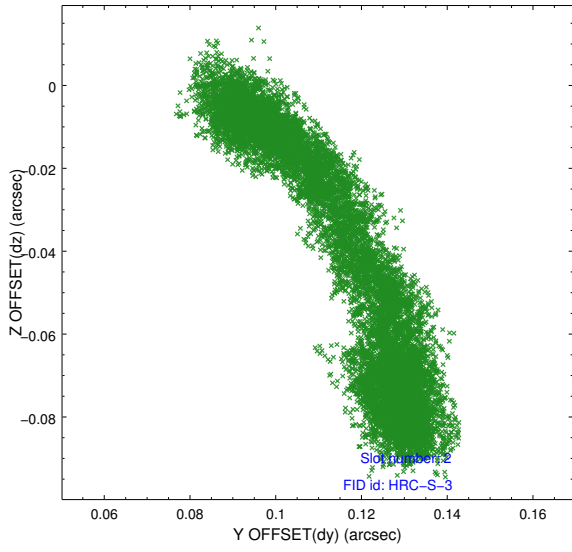
2.5.1 Slot 0



2.5.2 Slot 1



2.5.3 Slot 2



A Summary

A.1 Status

V&V Scientist	Beth Sundheim
V&V Date (YYYY-MM-DD)	2013.07.01
V&V Edition	1
V&V Disposition and Status	OK
V&V Charge Time	45.16278

A.2 Comments