

V&V Reference Report

L2 ASCDS Version : 8.4.3

Observation 6233 - L2 Version 4
Chandra X-Ray Center

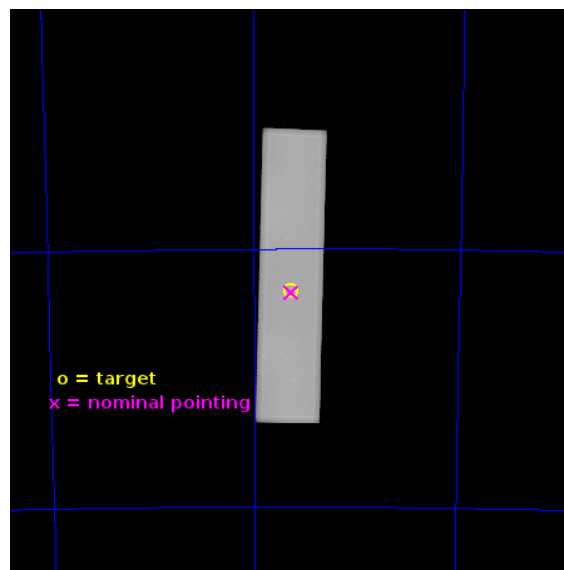
L2 Processing Date : Jun 29 2013

Contents

1	Front	2
2	OBI	3
2.1	OBI	3
2.1.1	Images	3
2.1.2	Parameters	4
2.1.3	Events	4
2.2	Compared Parameters	5
2.3	Aspect	6
2.4	Star Slots	9
2.4.1	Slot 3	9
2.4.2	Slot 4	10
2.4.3	Slot 5	11
2.4.4	Slot 6	12
2.4.5	Slot 7	13
2.5	FID Slots	14
2.5.1	Slot 0	14
2.5.2	Slot 1	15
2.5.3	Slot 2	16
A	Summary	17
A.1	Status	17
A.2	Comments	17

1 Front

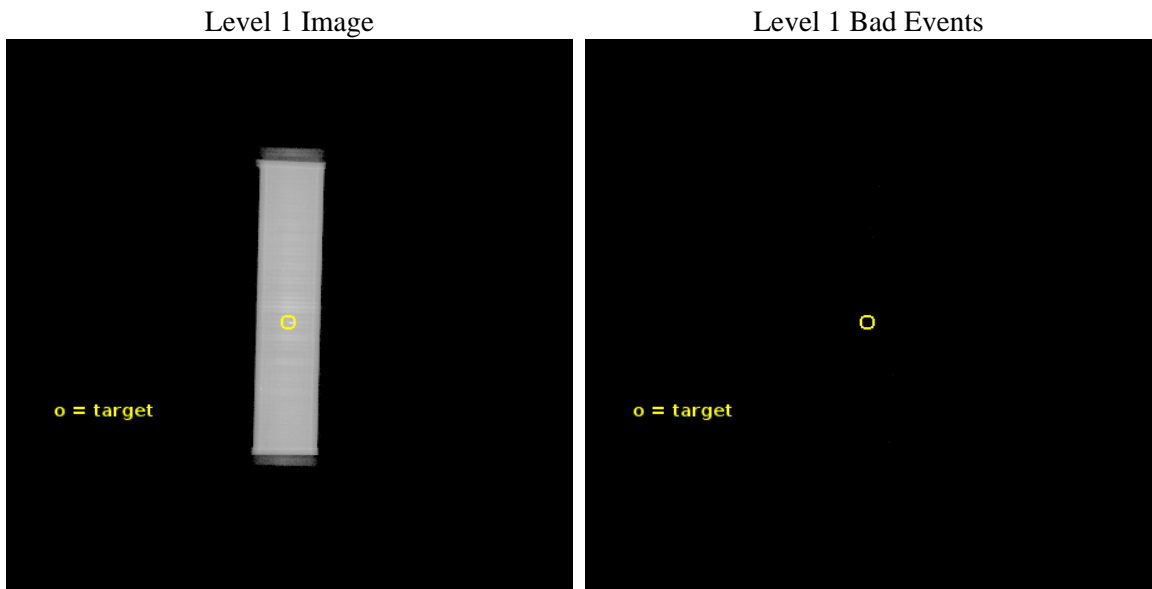
seq_num	500535	Sequence number
obs_id	6233	Observation id
title	Search for Sub-Millisecond Pulsars in 47 Tuc	Proposal title
observer	Prof. Robert Rutledge	Principal investigator
object	47 Tuc	Source name
ra_targ	6.021667	Observer's specified target RA [deg]
dec_targ	-72.080528	Observer's specified target Dec [deg]
ra_nom	6.0215853649809	Nominal RA [deg]
dec_nom	-72.085203631628	Nominal Dec [deg]
roll_nom	271.29186900334	Nominal Roll [deg]
revision	4	Processing version of data
ontime	97930.810776621	[s]
livetime	97181.360766694	Ontime multiplied by DTCOR
l2events	4744002	Number of level 2 events



2 OBI

2.1 OBI

2.1.1 Images



2.1.2 Parameters

obi_num	0	Obi number	sched_exp_time	99934.308000	[s] Scheduled observation exposure time
ascdsver	10	Processing system revision	ontime	97930.810786605	[s]
caldbver	4.5.7	 	l1events	6713762	Number of level 1 events
date	2013-06-29T04:04:57	Date and time of file creation			
revision	4	Processing version of data			

2.1.3 Events

Level 1 Events

	segment 1	segment 2	segment 3
level 1 events	7282	6706469	11
rejected events	130	204876	0
rejected %	1%	3%	0%

2.2 Compared Parameters

Parameter	Planned	Actual
Instrument	HRC	HRC
Detector	HRC-S	HRC-S
Grating	NONE	NONE
Data mode	OBSERVING	OBSERVING
Observation mode	POINTING	POINTING
[deg] Pointing RA	5.969478	6.021585364980865
[deg] Pointing Dec	-72.061535	-72.08520363162805
[deg] Pointing Roll	271.174954	271.2918690033435
[mm] SIM focus pos	-1.533336	-1.526339935833849
[mm] SIM defocus	7.710433287538843e-07	0.006996703570447904
[mm] SIM translation stage pos	250.455976	250.4635187648994
[mm] SIM translation stage offset	0	-0.007540371344731511
[s] Observation start time (MET)	252569294.184000	252567516.07089
Observation start date	2006-01-02T06:07:09	2006-01-02T05:38:36
[s] Observation end time (MET)	252669229.184000	252671049.27569
Observation end date	2006-01-03T09:52:44	2006-01-03T10:24:09

Parameter	Planned	Actual
Obspar format version number	7	7
Obspar file type	PREDICTED	ACTUAL
Obspar update status	NONE	UPDATED

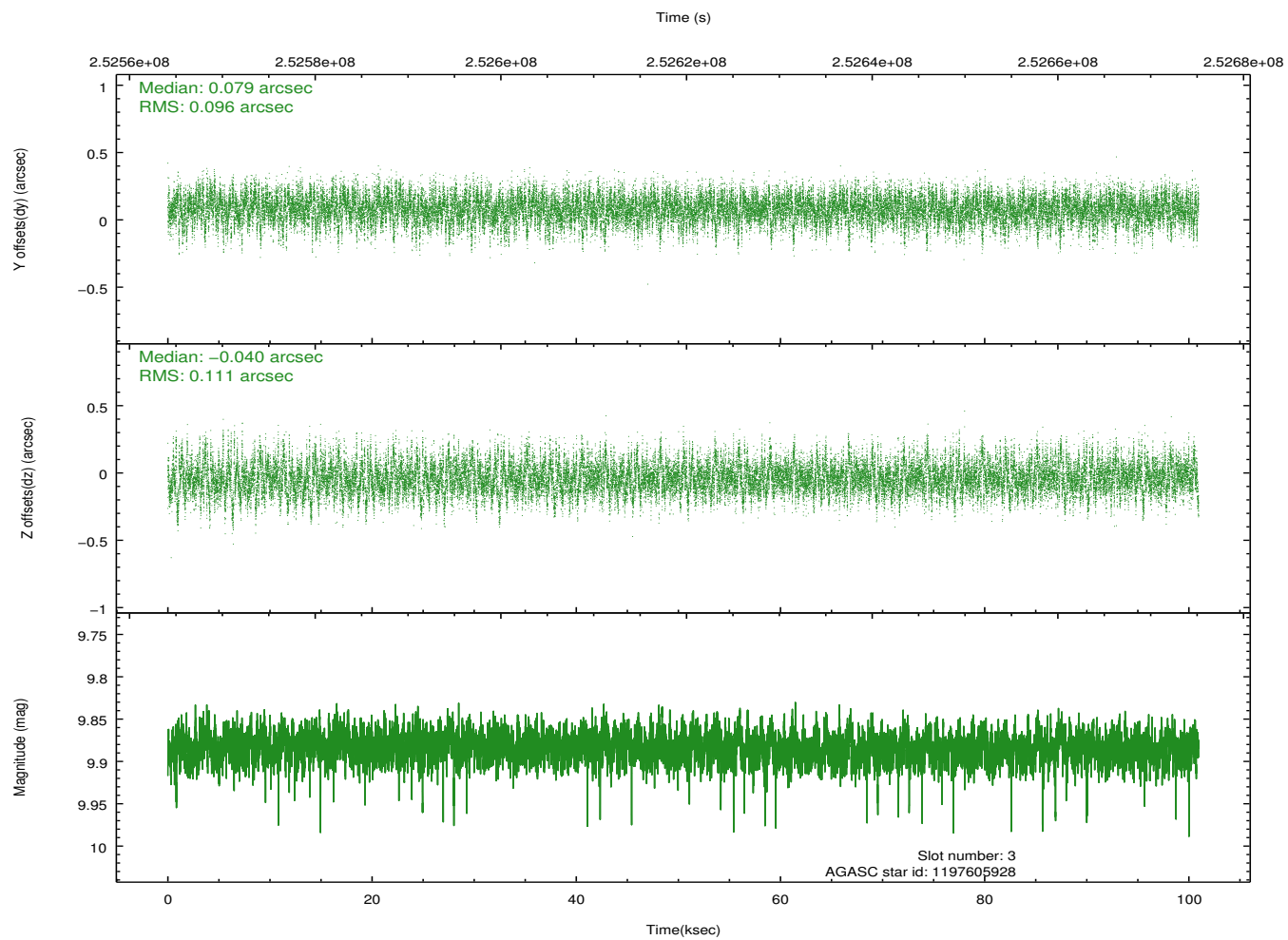
2.3 Aspect

Slot Statistics

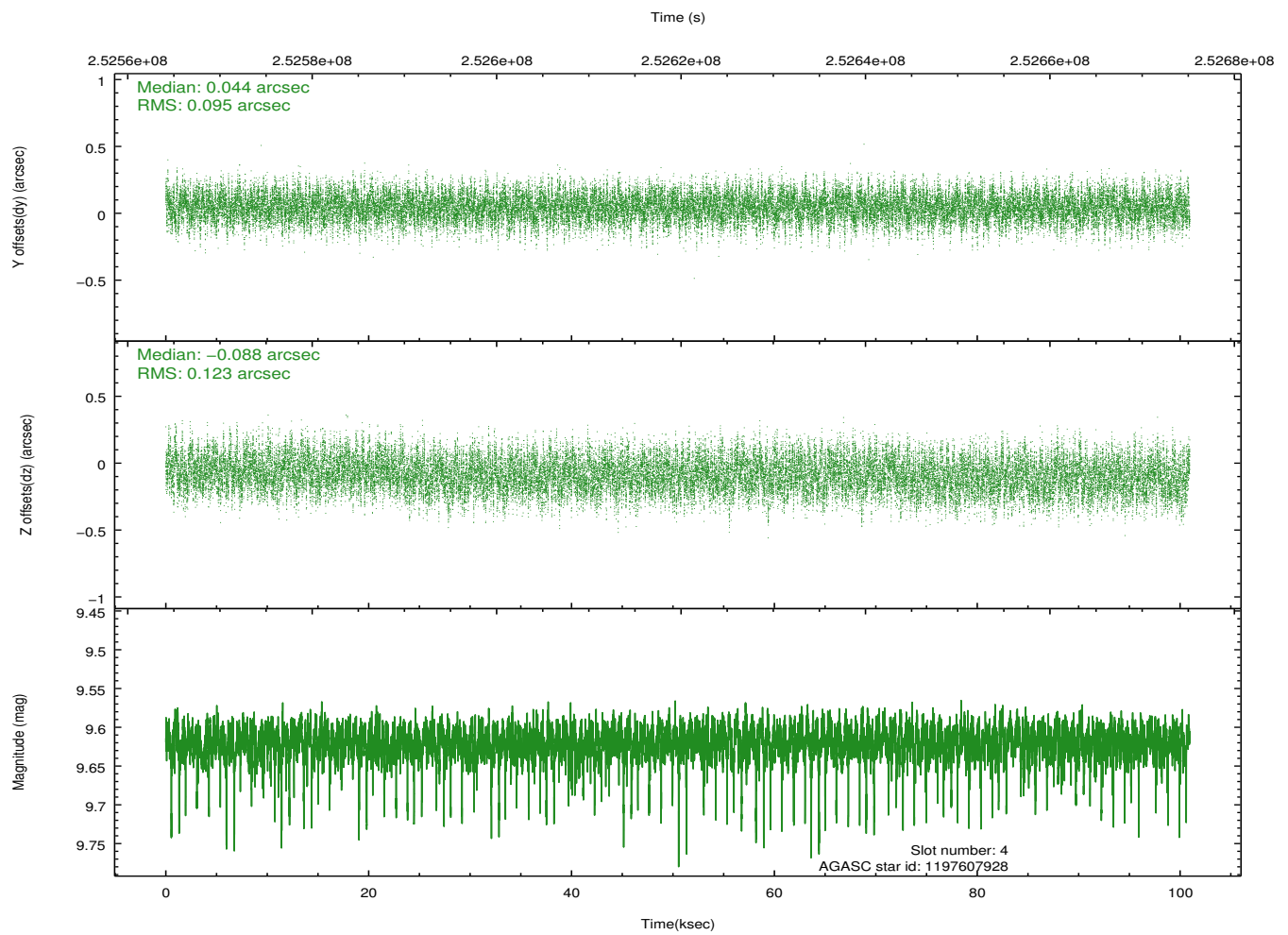
slot	status	id	mag	n_pts	med_dy	med_dz	dr1	dr2	ra	dec	mean_y	mean_z
0	FID	HRC-S-1	6.99	24624	0.136	-0.133	0.023	0.052	0.000000	0.000000	-1162.90	-461.01
1	FID	HRC-S-2	6.99	24625	0.130	-0.105	0.016	0.055	0.000000	0.000000	1236.71	-453.63
2	FID	HRC-S-3	7.01	24625	0.121	-0.066	0.024	0.079	0.000000	0.000000	-1165.60	568.56
3	GUIDE	1197605928	9.88	49191	0.079	-0.040	0.154	0.260	4.361277	-72.423732	1292.16	-1774.71
4	GUIDE	1197607928	9.62	49018	0.044	-0.088	0.167	0.267	7.837743	-72.165759	449.67	2050.93
5	GUIDE	1197617752	10.29	49181	0.099	0.250	0.162	0.291	4.480632	-72.284129	788.79	-1646.87
6	GUIDE	1197625128	8.58	49237	-0.196	-0.084	0.085	0.135	3.920586	-71.426112	-2294.74	-2302.84
7	GUIDE	1197621088	9.92	48785	-0.022	-0.043	0.166	0.273	3.823480	-72.180366	422.18	-2371.63

2.4 Star Slots

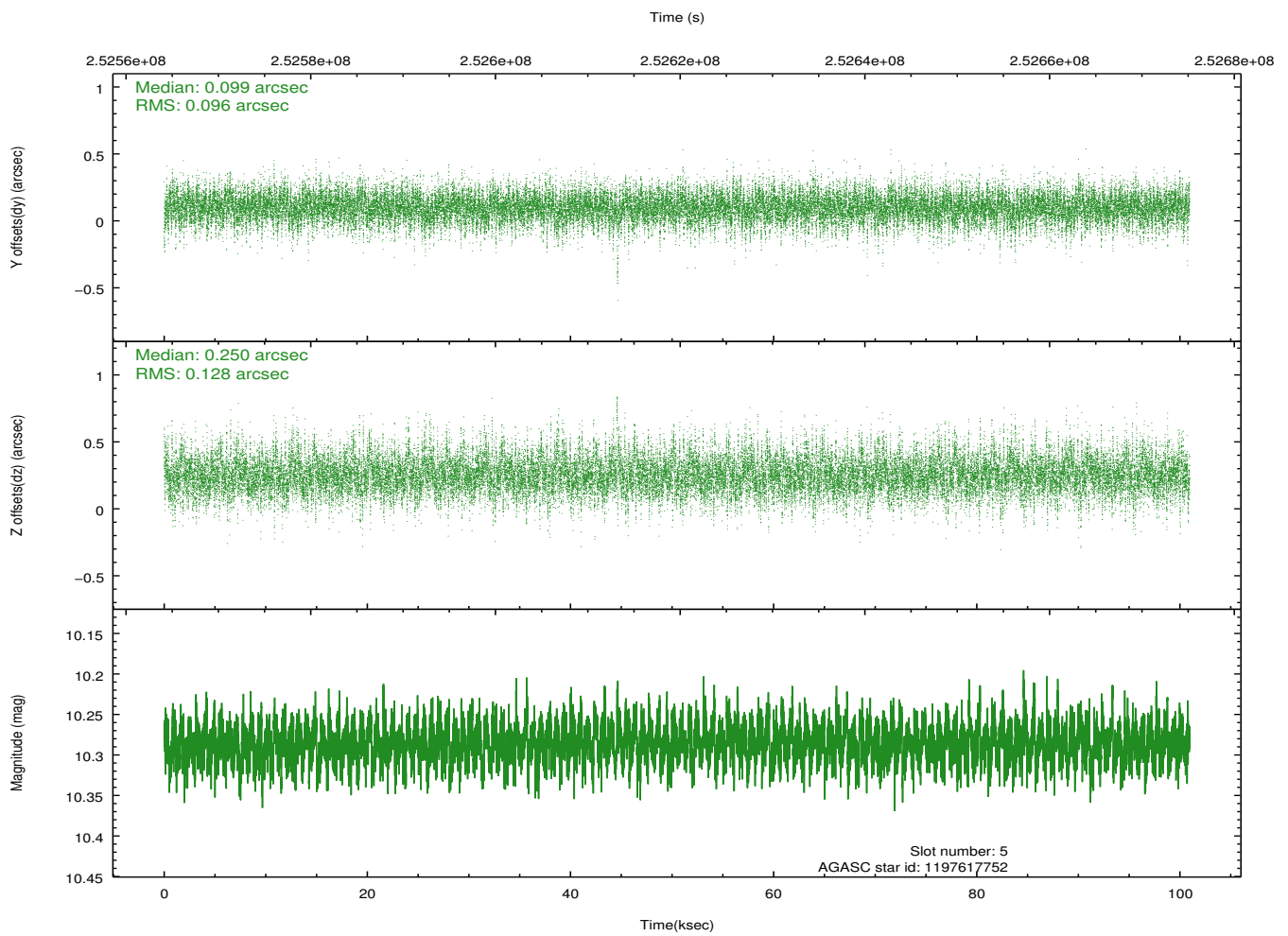
2.4.1 Slot 3



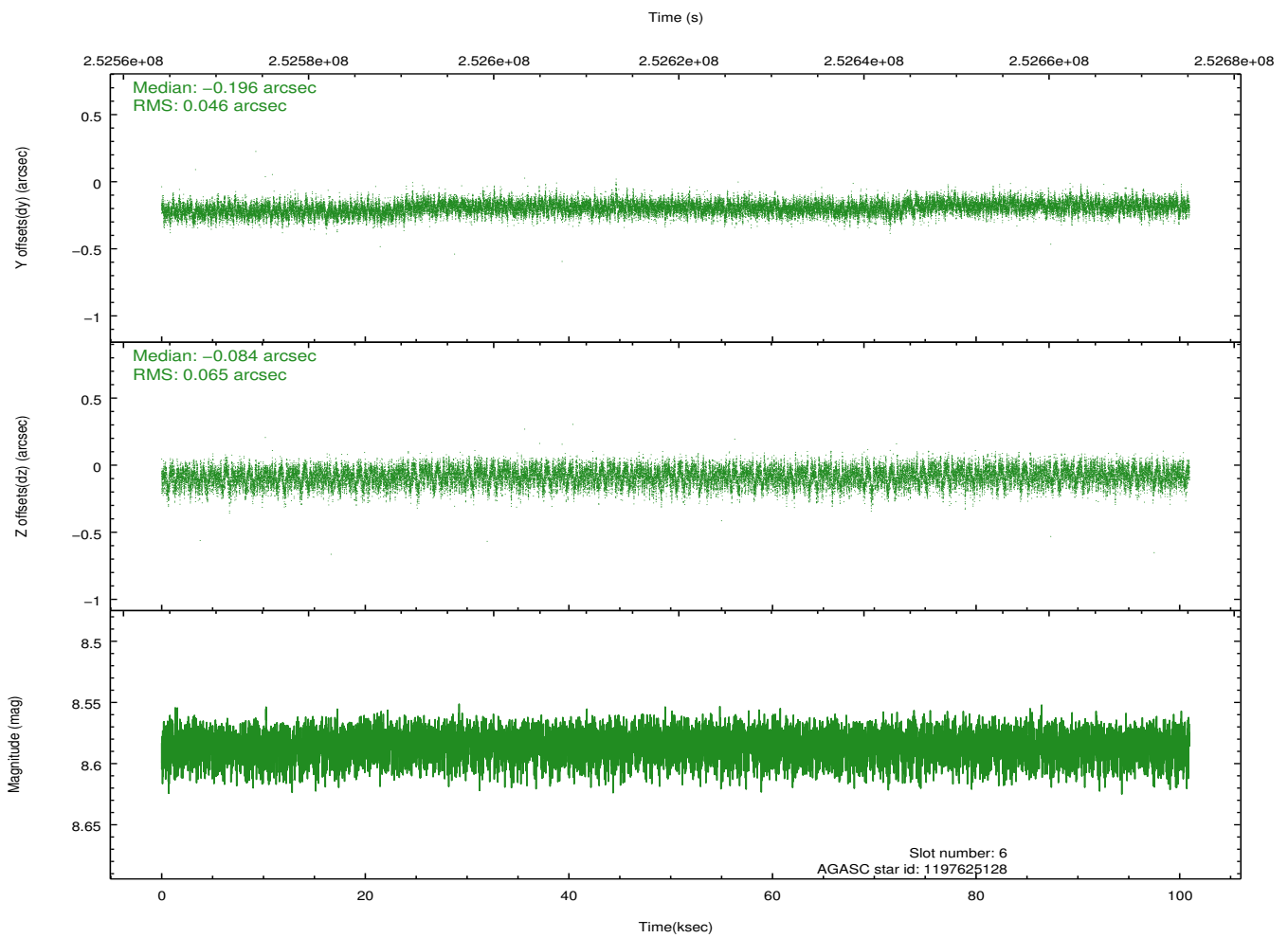
2.4.2 Slot 4



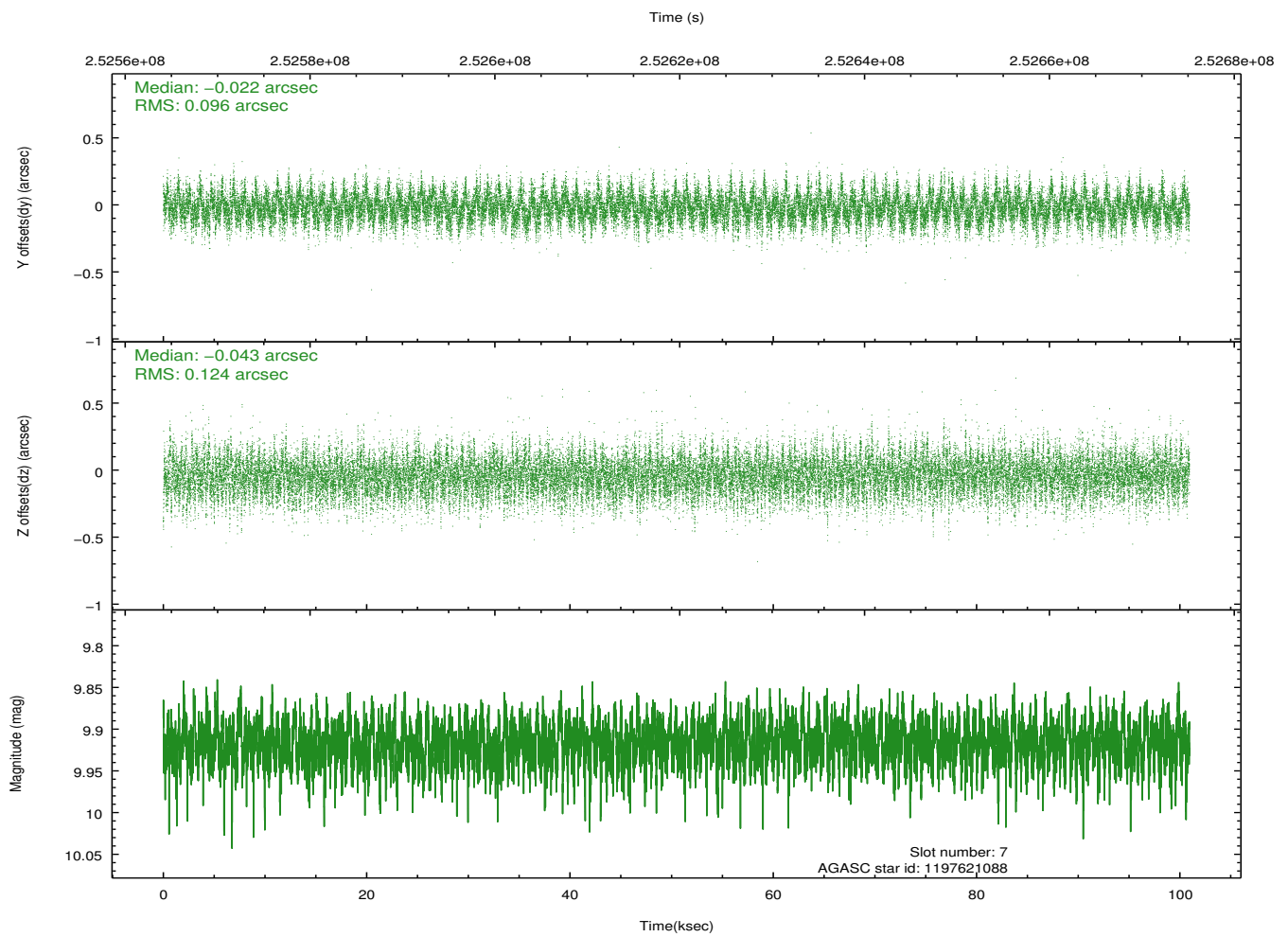
2.4.3 Slot 5



2.4.4 Slot 6

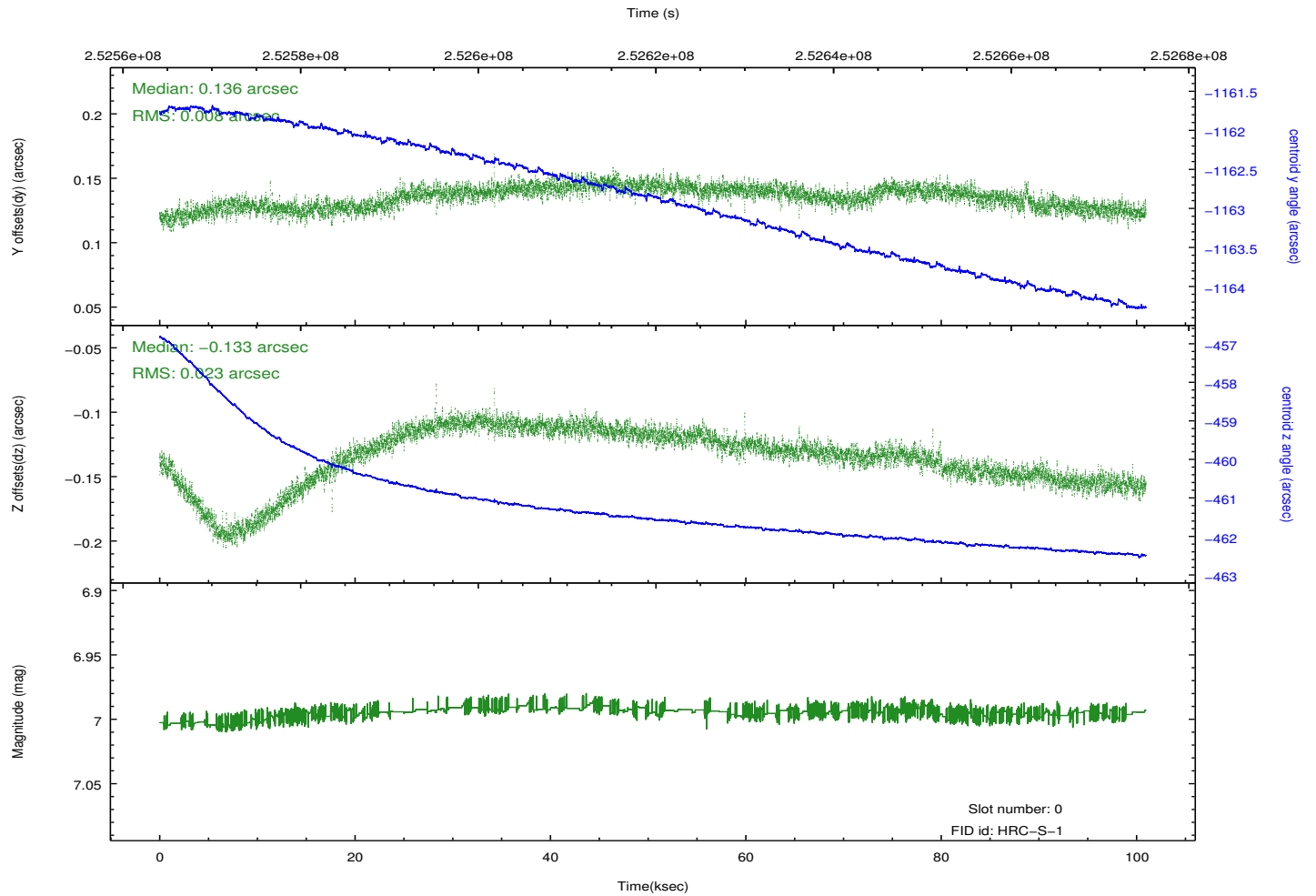
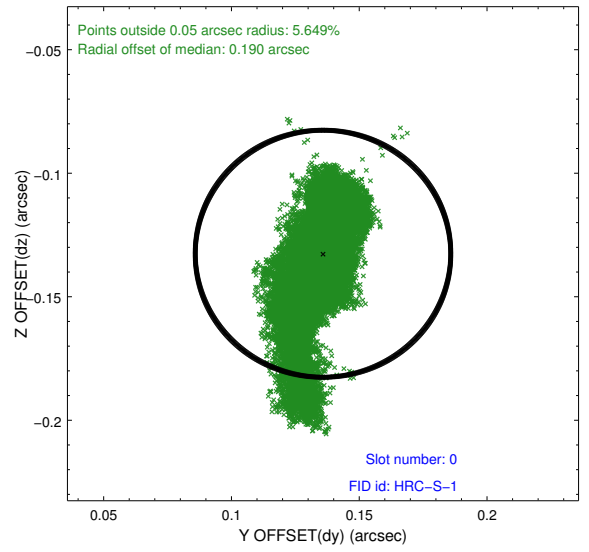
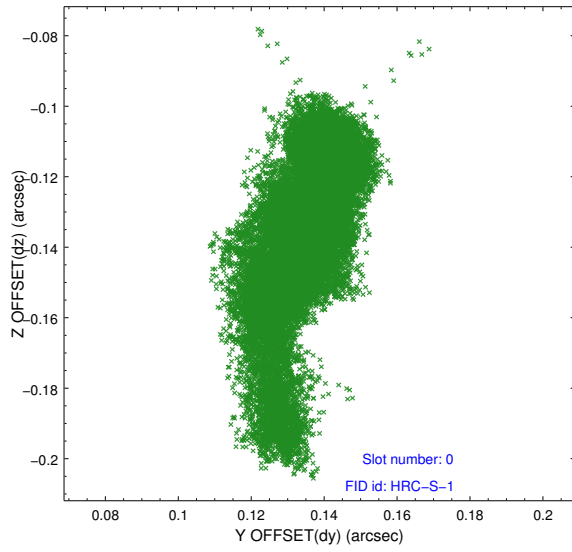


2.4.5 Slot 7

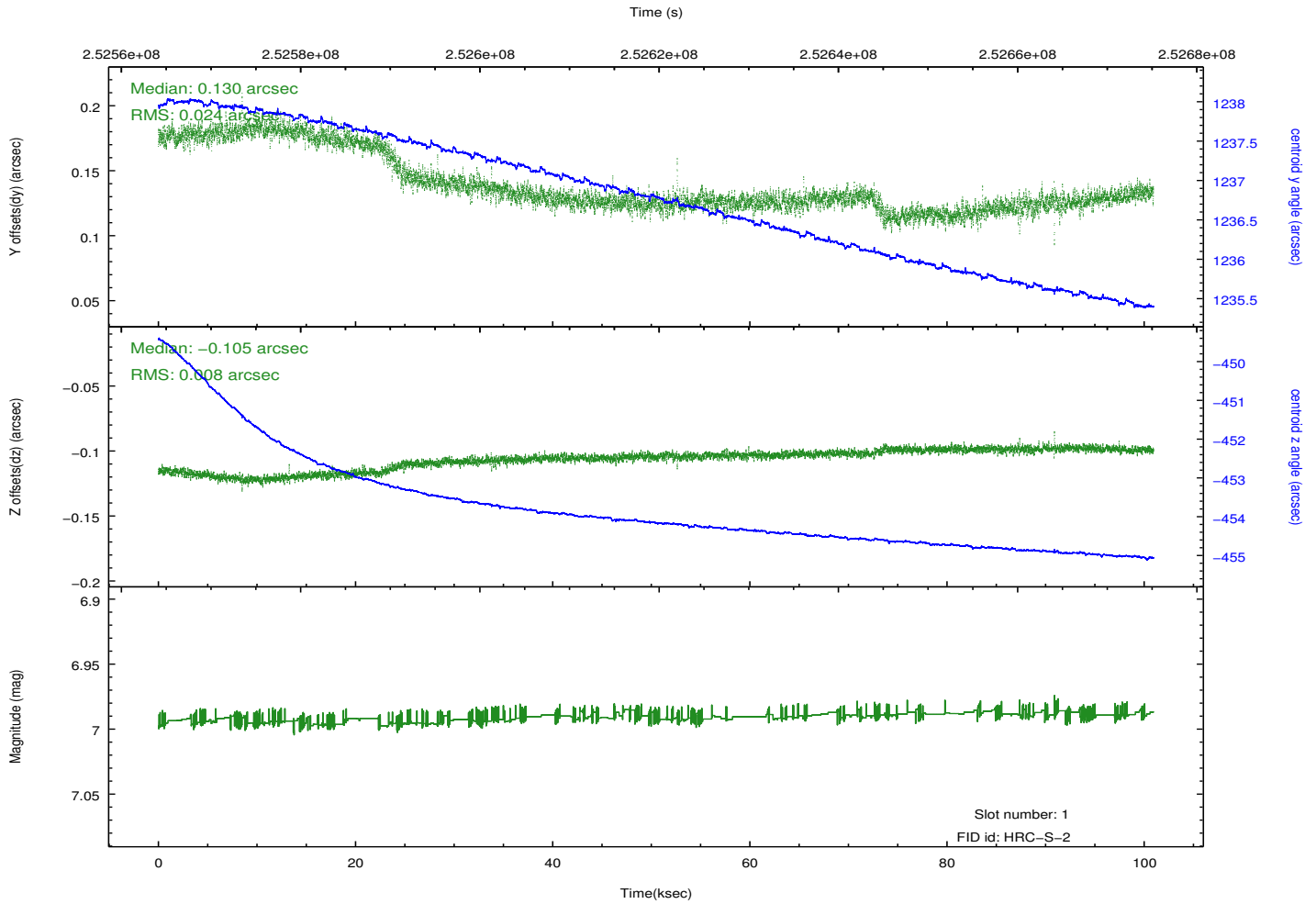
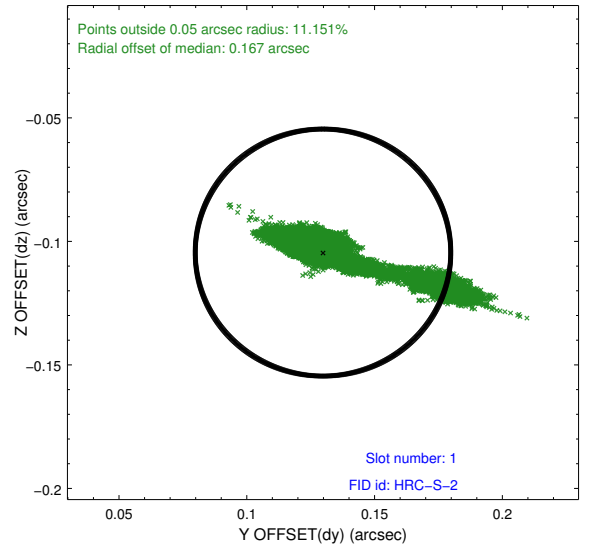
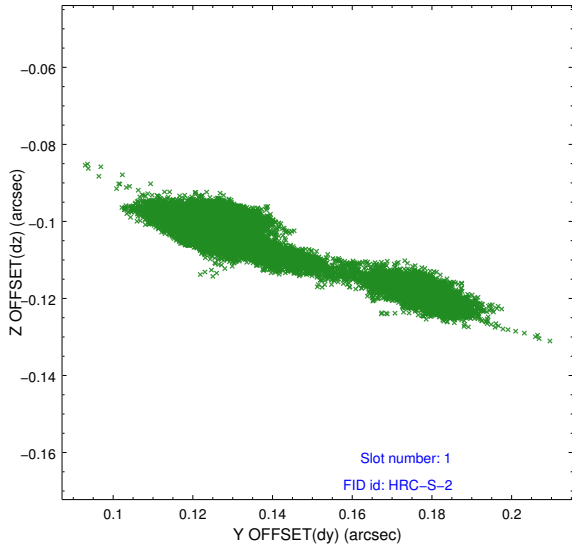


2.5 FID Slots

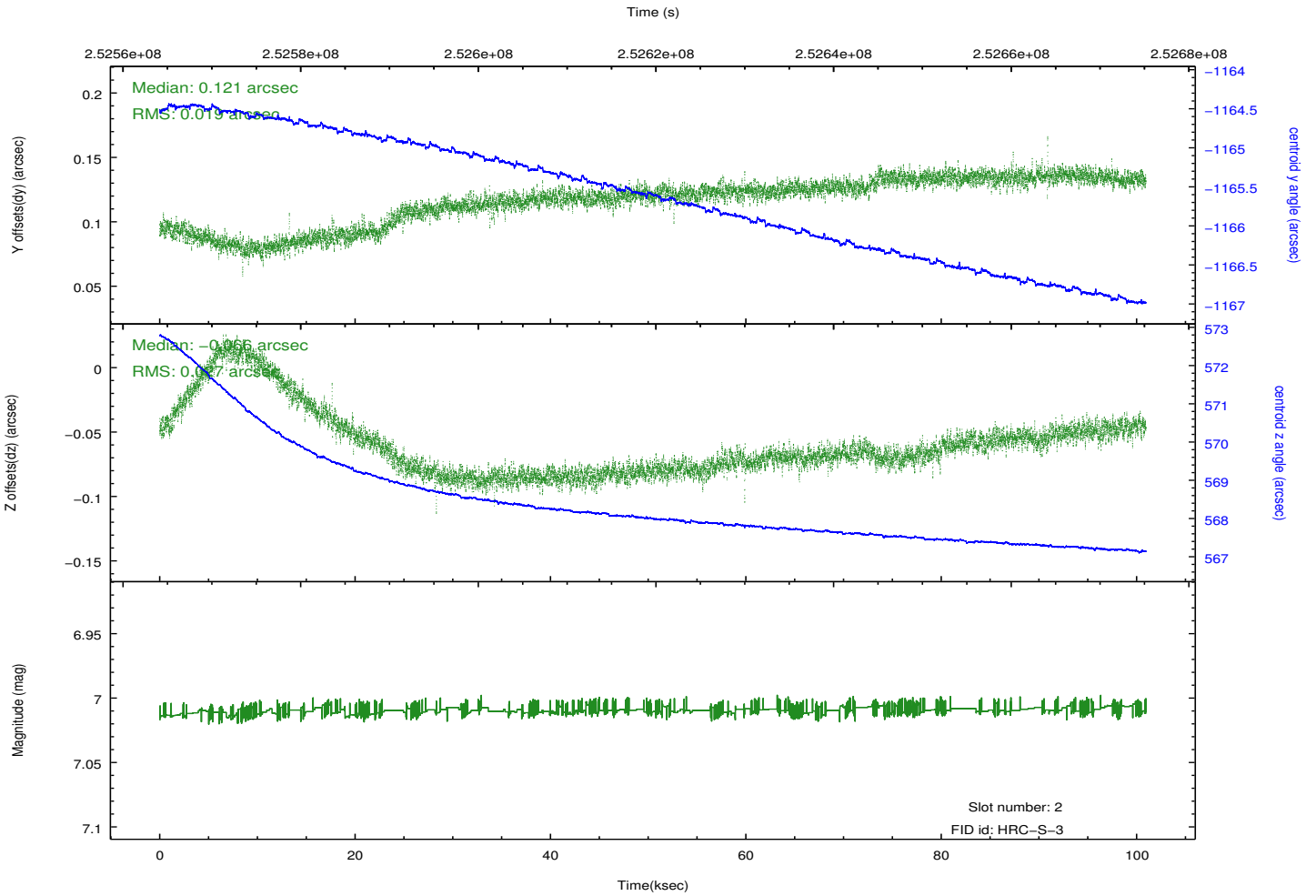
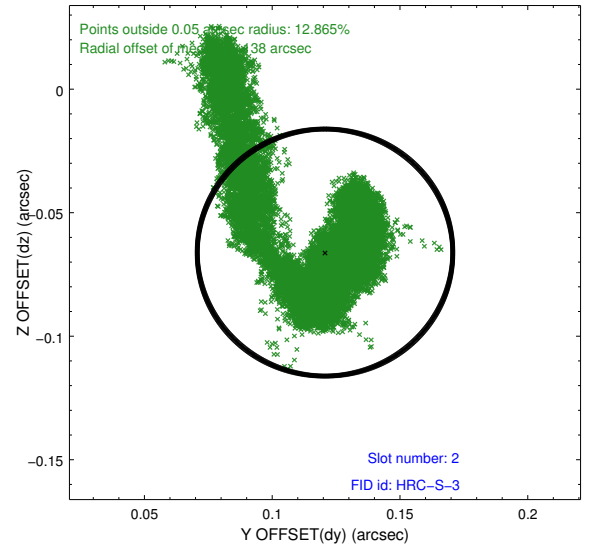
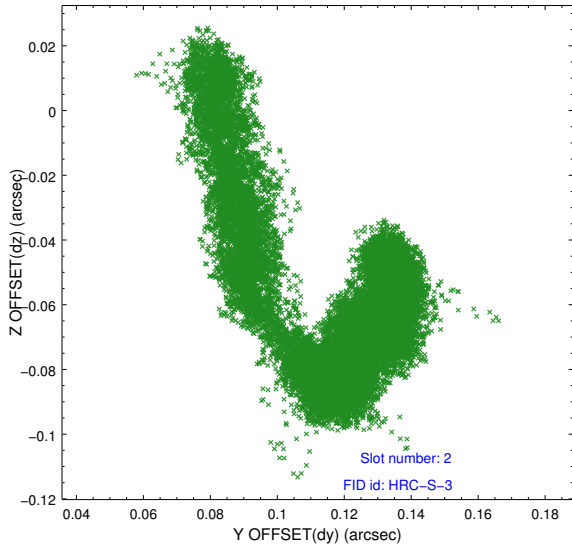
2.5.1 Slot 0



2.5.2 Slot 1



2.5.3 Slot 2



A Summary

A.1 Status

V&V Scientist	Beth Sundheim
V&V Date (YYYY-MM-DD)	2013.07.01
V&V Edition	1
V&V Disposition and Status	OK
V&V Charge Time	97.93081

A.2 Comments