

# V&V Reference Report

## L2 ASCDS Version : 8.2.1

Observation 62423 - L2 Version 4  
Chandra X-Ray Center

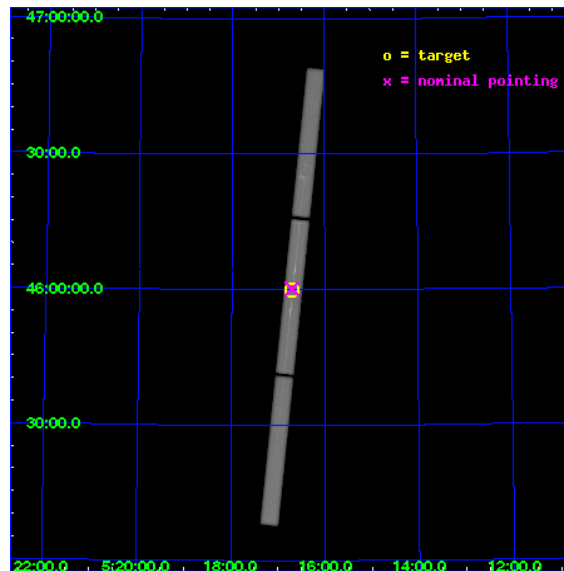
L2 Processing Date : Jan 13 2010

## Contents

<b>1</b>	<b>Front</b>	<b>2</b>
<b>2</b>	<b>OBI</b>	<b>3</b>
2.1	OBI . . . . .	3
2.1.1	Images . . . . .	3
2.1.2	Parameters . . . . .	4
2.1.3	Events . . . . .	4
2.2	Compared Parameters . . . . .	5
2.3	Aspect . . . . .	6
2.4	Star Slots . . . . .	9
2.4.1	Slot 3 . . . . .	9
2.4.2	Slot 4 . . . . .	10
2.4.3	Slot 5 . . . . .	11
2.4.4	Slot 6 . . . . .	12
2.4.5	Slot 7 . . . . .	13
2.5	FID Slots . . . . .	14
2.5.1	Slot 0 . . . . .	14
2.5.2	Slot 1 . . . . .	15
2.5.3	Slot 2 . . . . .	16
<b>3</b>	<b>Gratings</b>	<b>17</b>
3.1	LETG Arm . . . . .	17
<b>A</b>	<b>Summary</b>	<b>19</b>
A.1	Status . . . . .	19
A.2	Comments . . . . .	19

# 1 Front

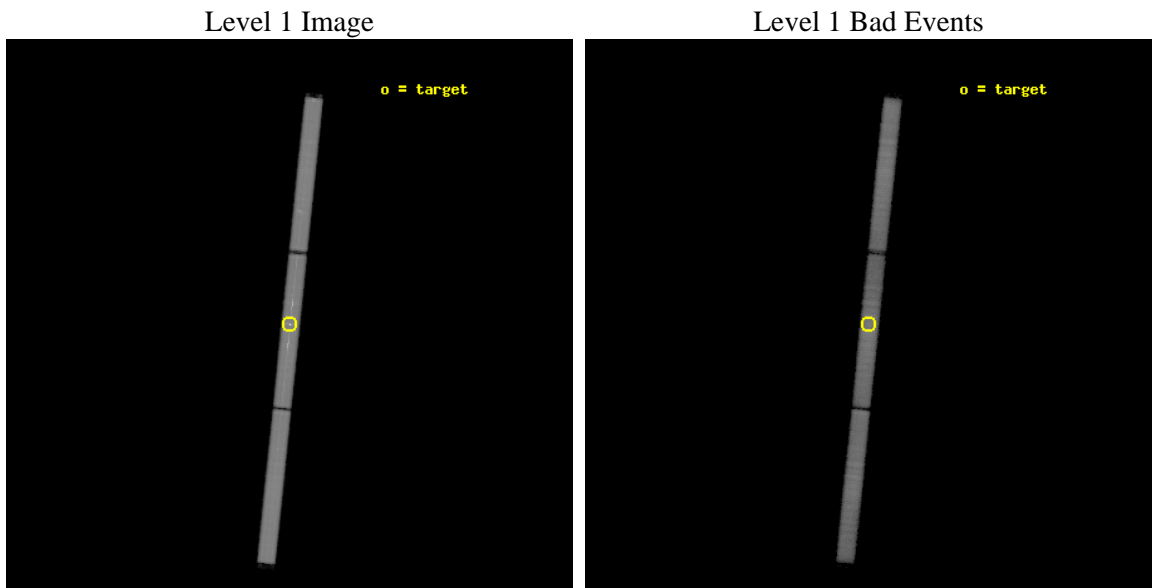
seq_num	290135	Sequence number
obs_id	62423	Observation id
title	GRATINGS CALIBRATION OBSERVATION OF AN EMISSION LINE SOURCE: CAPELLA	&#160
observer	Dr. CXC Calibration	Principal investigator
object	CAPELLA	Source name
ra_targ	79.17625	Observer's specified target RA
dec_targ	45.997889	Observer's specified target Dec
ra_nom	79.176285213391	Nominal RA
dec_nom	46.003195382224	Nominal Dec
roll_nom	95.86731504299	Nominal Roll
revision	4	Processing version of data
ontime	14697.731777534	[s]
livetime	14559.839863877	Overtime multiplied by DTCOR
l2events	1005079	Number of level 2 events



## 2 OBI

### 2.1 OBI

#### 2.1.1 Images



## 2.1.2 Parameters

obi_num	0	Obi number	sched_exp_time	85400.000000	Scheduled observation exposure time
ascdsver	8.2.1	Processing system revision	ontime	14697.731777534	[s]
caldbver	4.1.5	&#160	ll events	1509068	Number of level 1 events
date	2010-01-13T13:25:17	Date and time of file creation			
revision	4	Processing version of data			

## 2.1.3 Events

### Level 1 Events

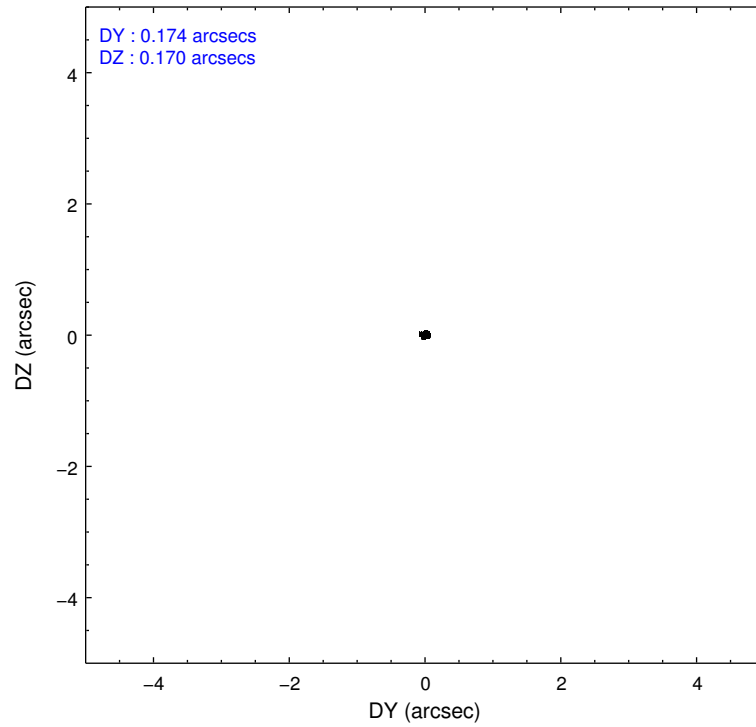
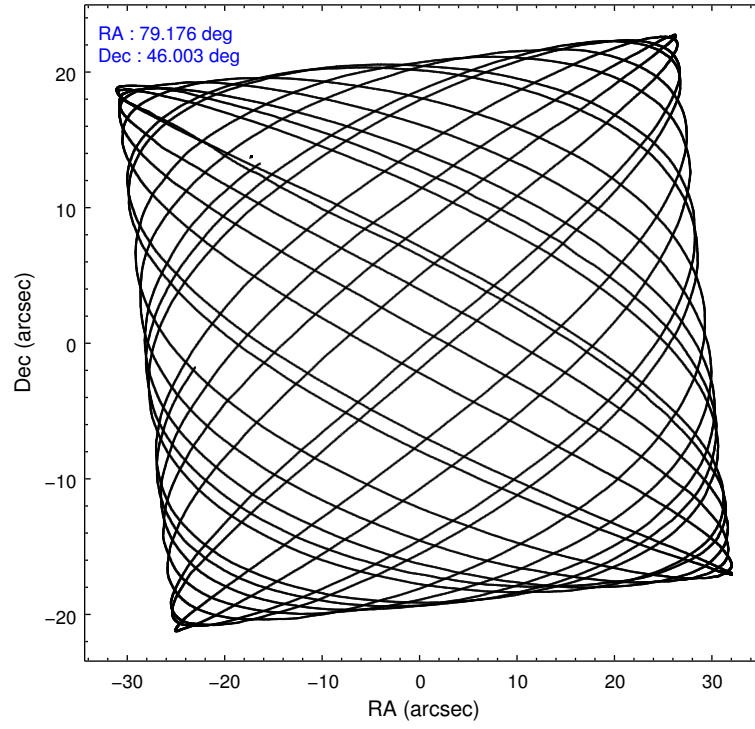
	<b>segment 1</b>	<b>segment 2</b>	<b>segment 3</b>
level 1 events	495372	527702	485994
rejected events	116911	122525	144280
rejected %	23%	23%	29%

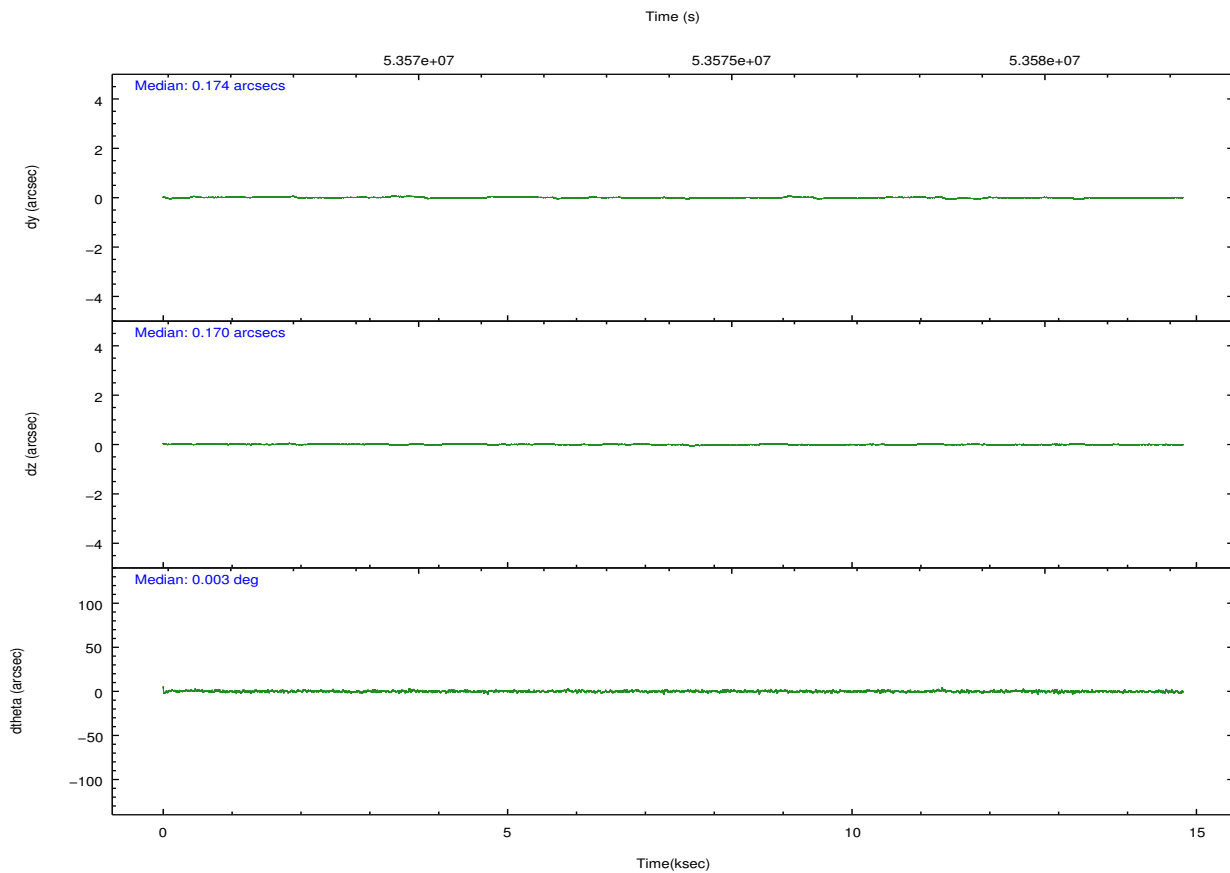
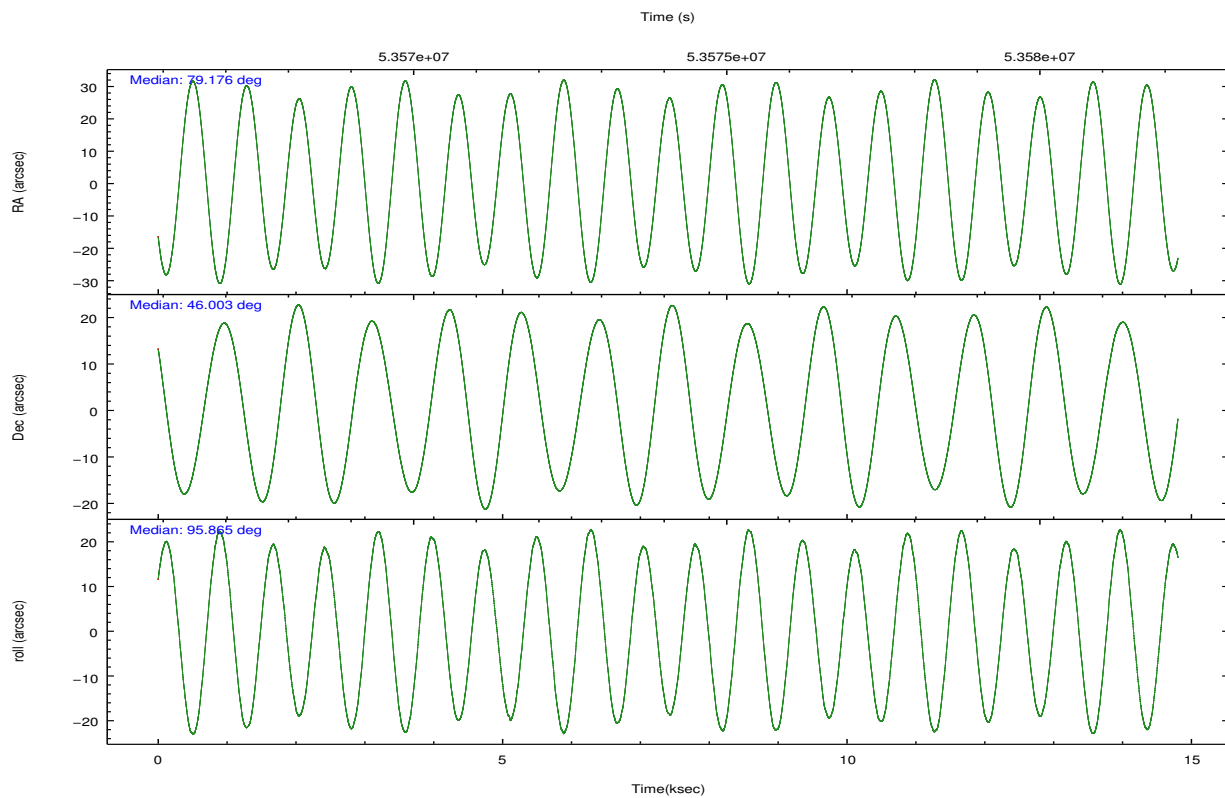
## 2.2 Compared Parameters

Parameter	Planned	Actual
Instrument	HRC	HRC
Detector	HRC-S	HRC-S
Grating	LETG	LETG
Data mode	OBSERVING	OBSERVING
Observation mode	POINTING	POINTING
Pointing RA	79.201486	79.17628521339108
Pointing Dec	45.980233	46.0031953822243
Pointing Roll	95.781851	95.86731504298987
SIM focus pos (mm)	-1.429586	-1.27598394818995
SIM defocus (mm)	0.1037507710433287	0.2573526912143473
SIM translation stage pos (mm)	250.455976	250.466033080201
SIM translation stage offset (mm)	0	-0.01005468664627074
Observation start time	53496064.184000	53566658.012
Observation start date	1999-09-12T04:00:00	1999-09-12T23:37:38
Observation end time	53581464.184000	53581554.337534
Observation end date	1999-09-13T03:43:20	1999-09-13T03:45:54

Parameter	Planned	Actual
Obspar format version number	6	6
Obspar file type	PREDICTED	ACTUAL
Obspar update status	NONE	UPDATED

## 2.3 Aspect



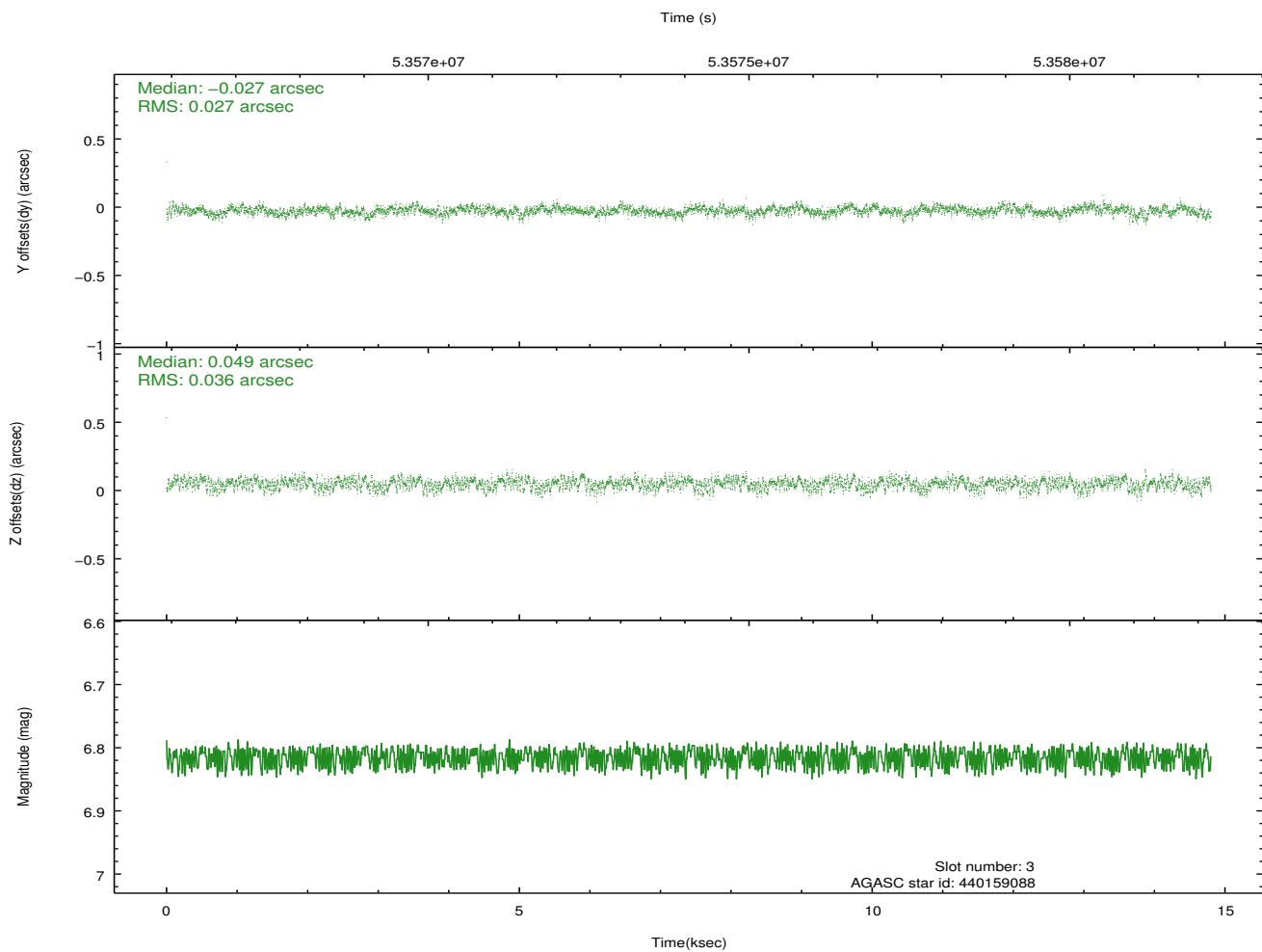
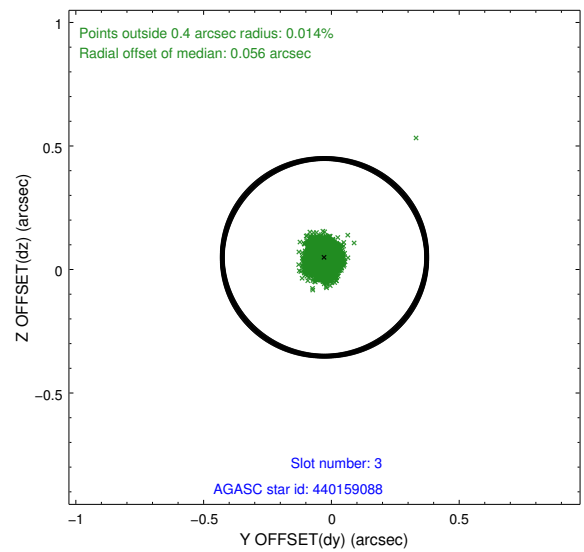
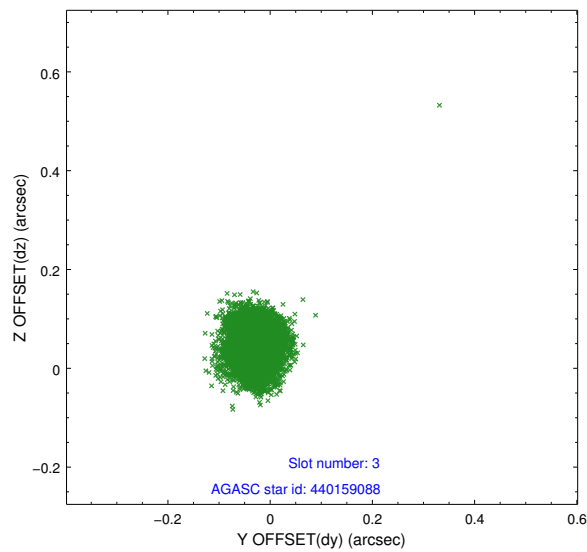


### Slot Statistics

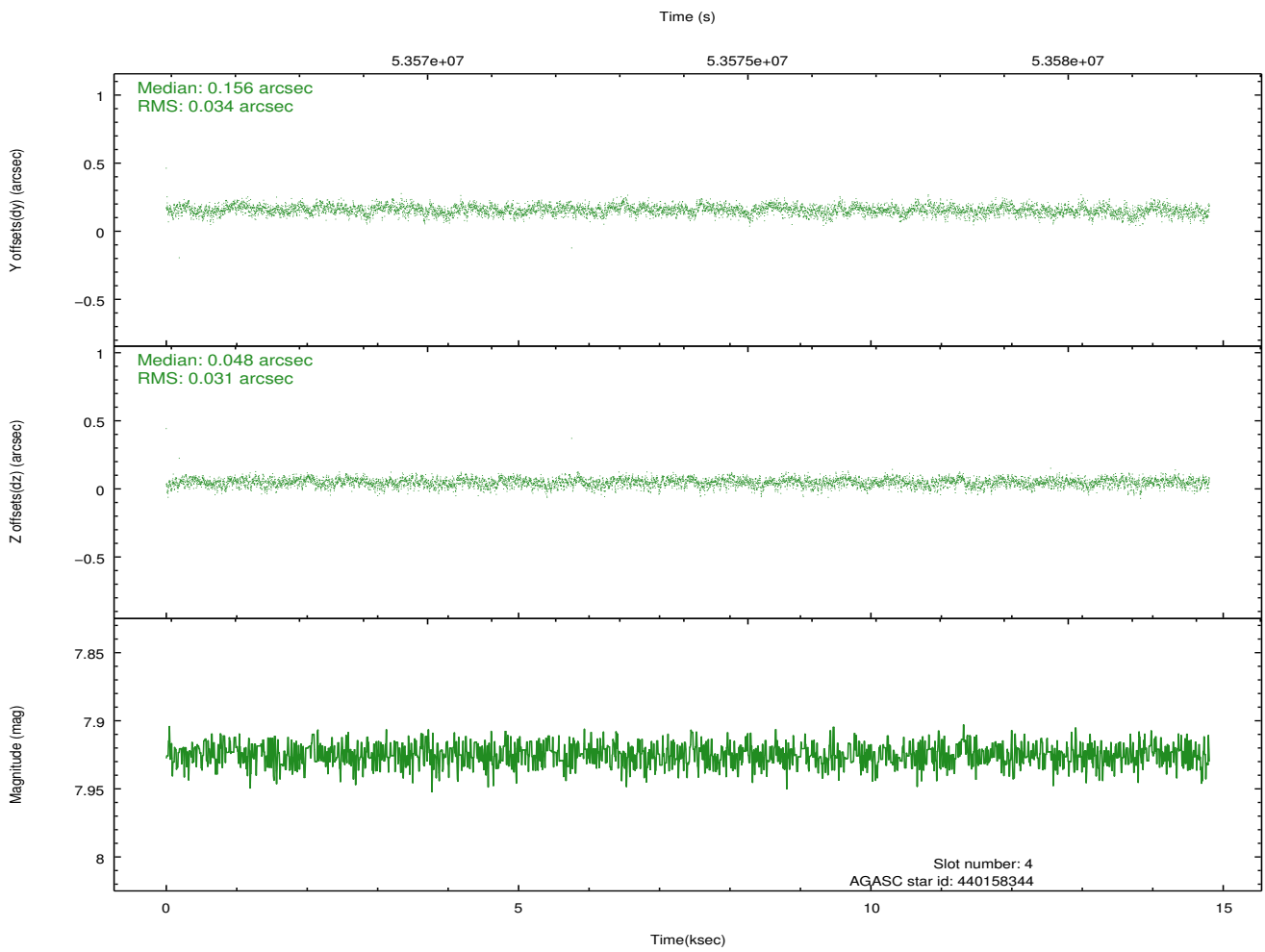
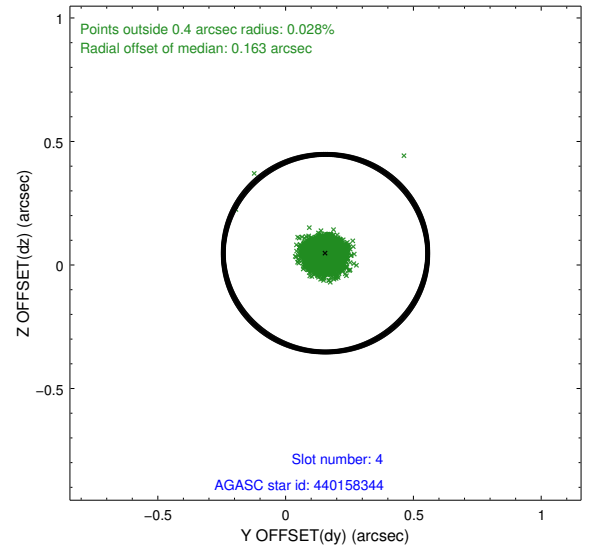
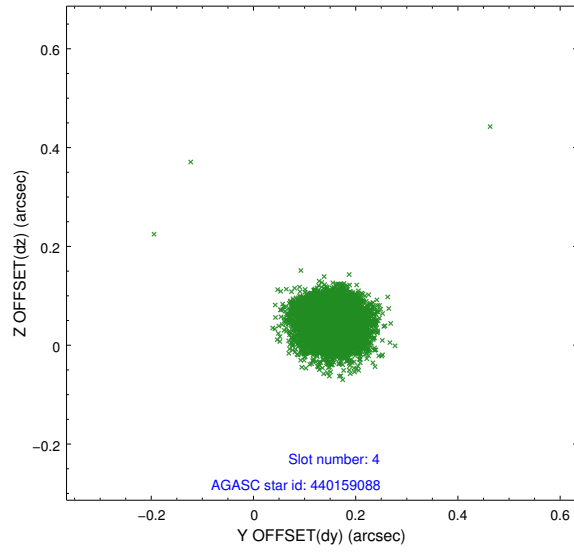
slot	status	id	mag	n_pts	med_dy	med_dz	dr1	dr2	ra	dec	mean_y	mean_z
0	FID	HRC-S-1	6.98	7222	0.155	-0.090	0.008	0.018	0.000000	0.000000	-1154.22	-448.35
1	FID	HRC-S-3	7.00	7223	0.116	-0.096	0.008	0.014	0.000000	0.000000	-1157.02	581.12
2	FID	HRC-S-4	6.97	7223	0.117	-0.111	0.008	0.017	0.000000	0.000000	1244.00	583.54
3	GUIDE	440159088	6.81	7223	-0.027	0.049	0.048	0.076	79.453034	46.128063	467.94	-677.64
4	GUIDE	440158344	7.92	7221	0.156	0.048	0.048	0.078	79.344888	45.394991	-2131.41	-148.16
5	GUIDE	440149808	8.43	7220	-0.064	-0.099	0.057	0.091	78.873930	46.405955	1608.70	654.79
6	GUIDE	438438936	8.97	7221	-0.175	-0.095	0.081	0.132	78.241026	46.550197	2296.03	2158.22
7	GUIDE	440145944	9.09	7219	0.116	0.099	0.081	0.128	80.083717	45.428844	-2186.06	-2018.17

## 2.4 Star Slots

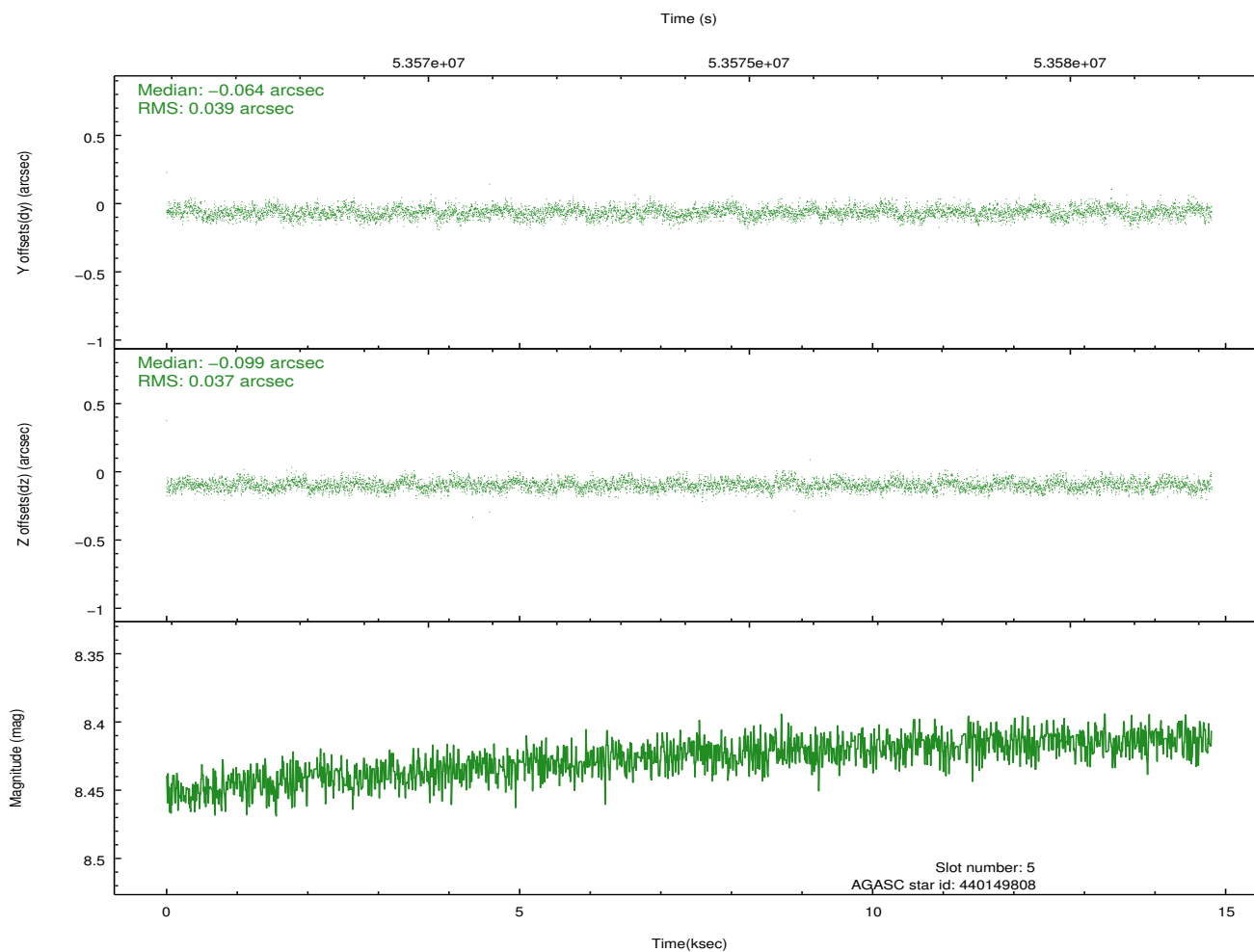
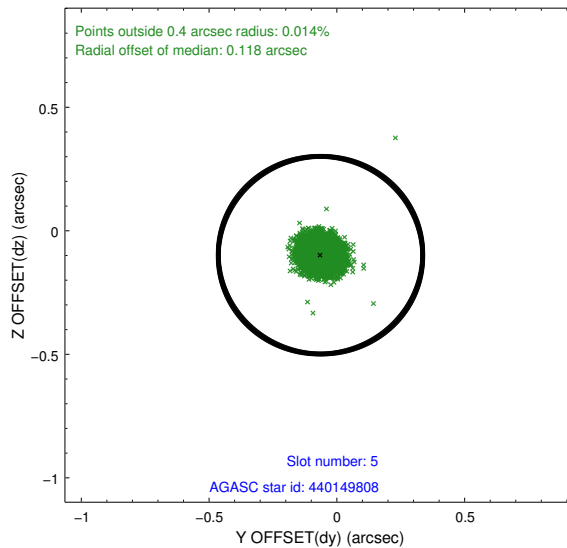
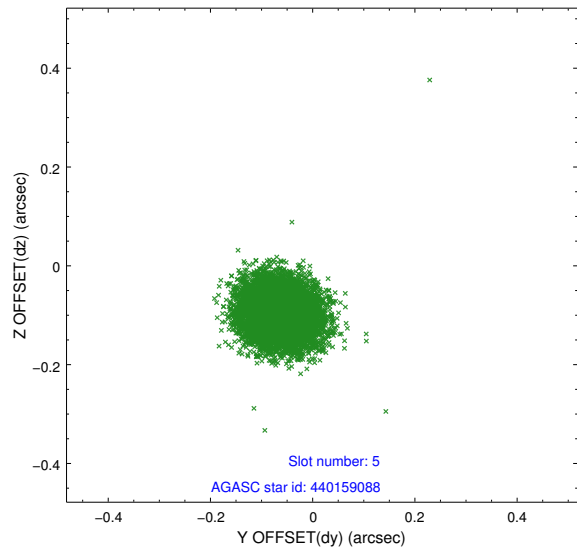
### 2.4.1 Slot 3



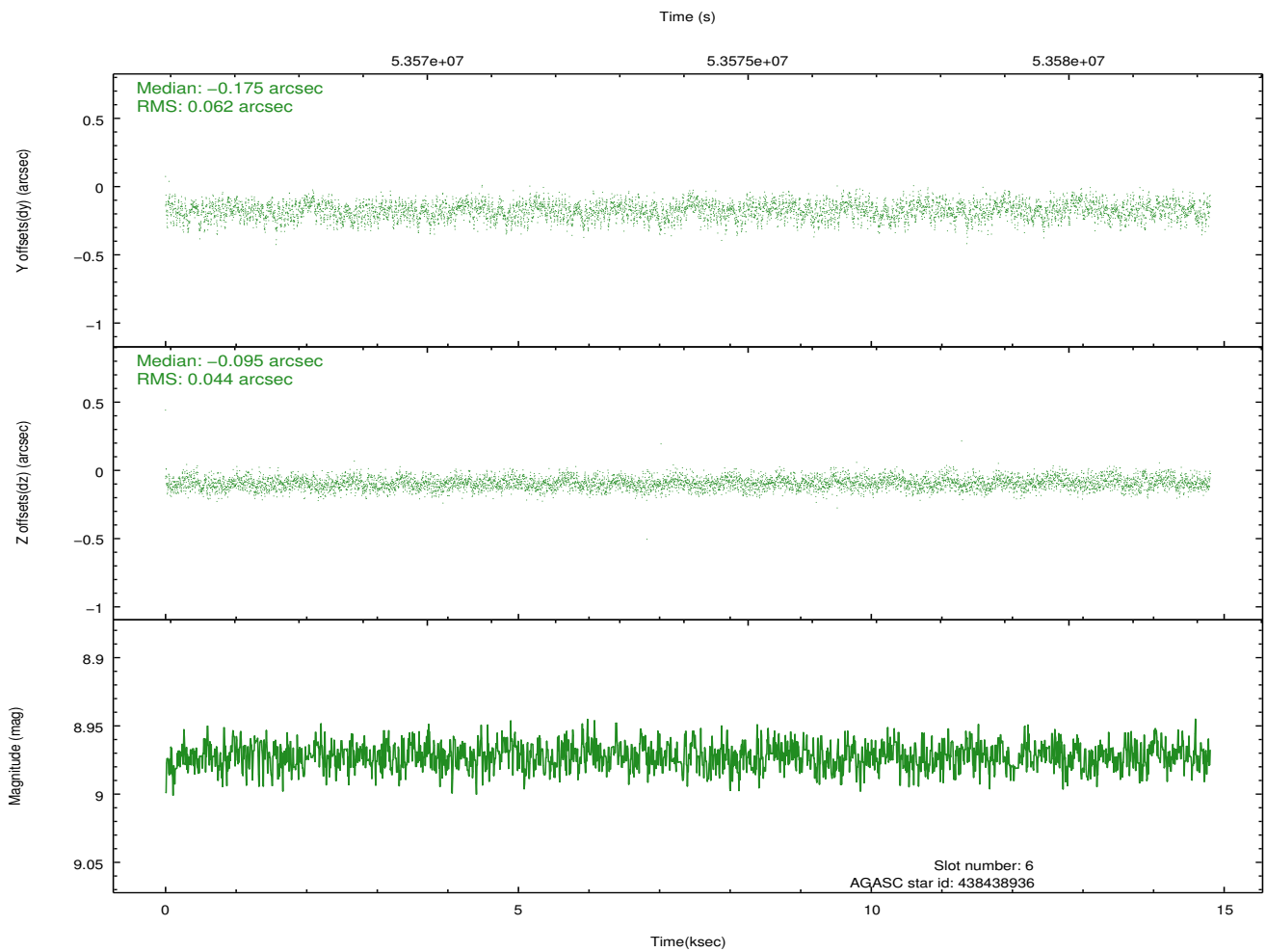
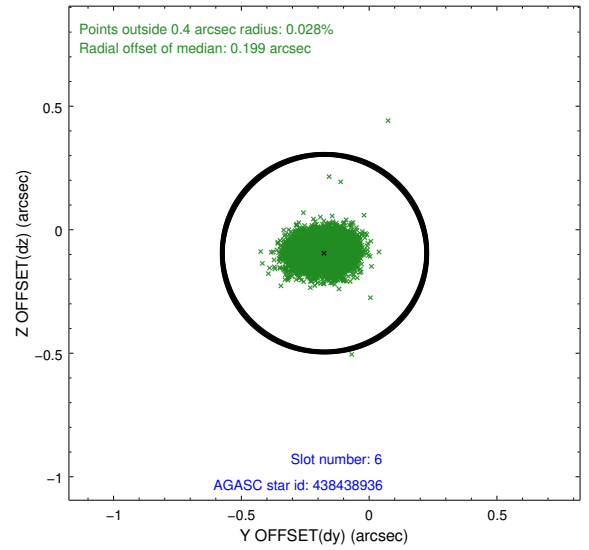
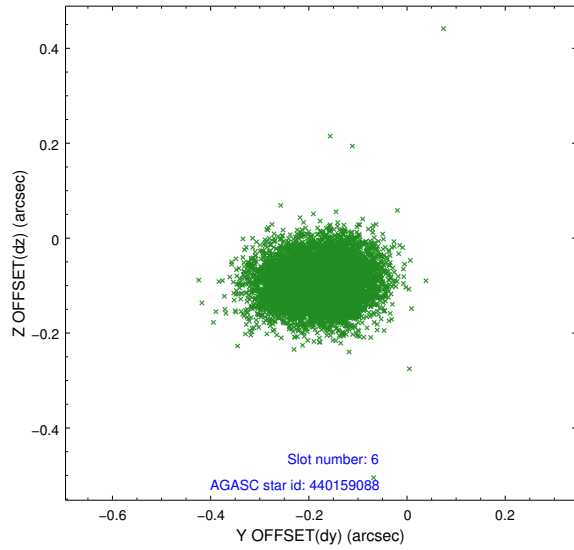
## 2.4.2 Slot 4



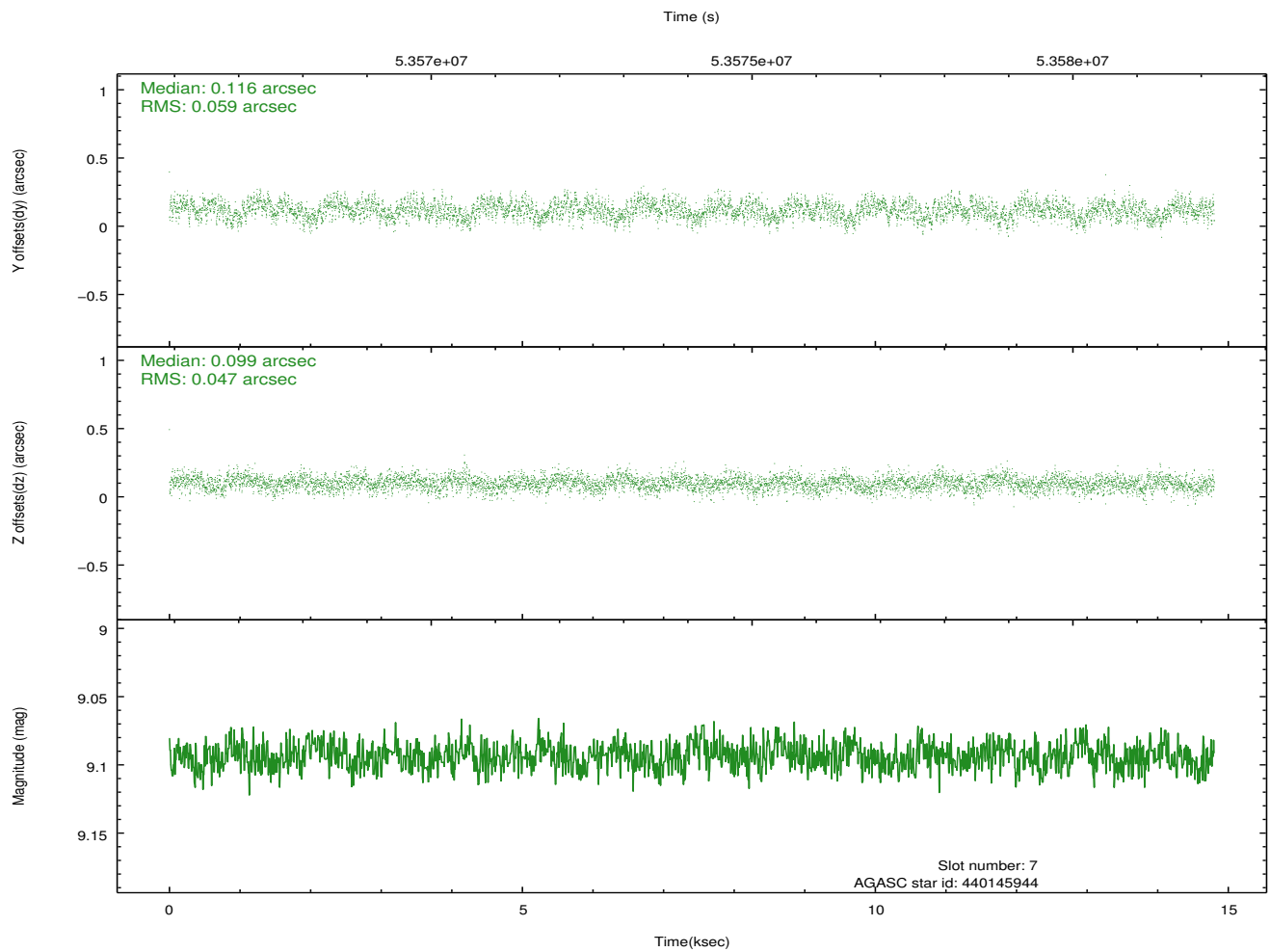
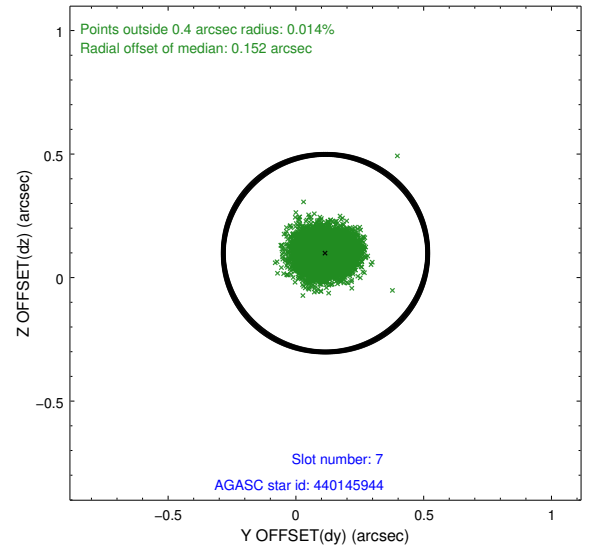
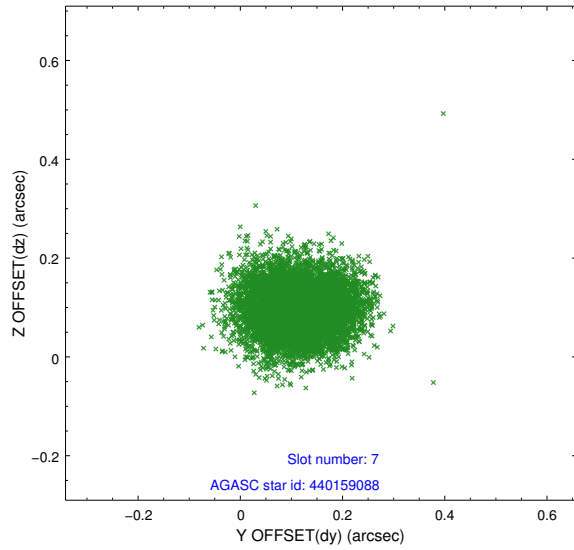
### 2.4.3 Slot 5



## 2.4.4 Slot 6

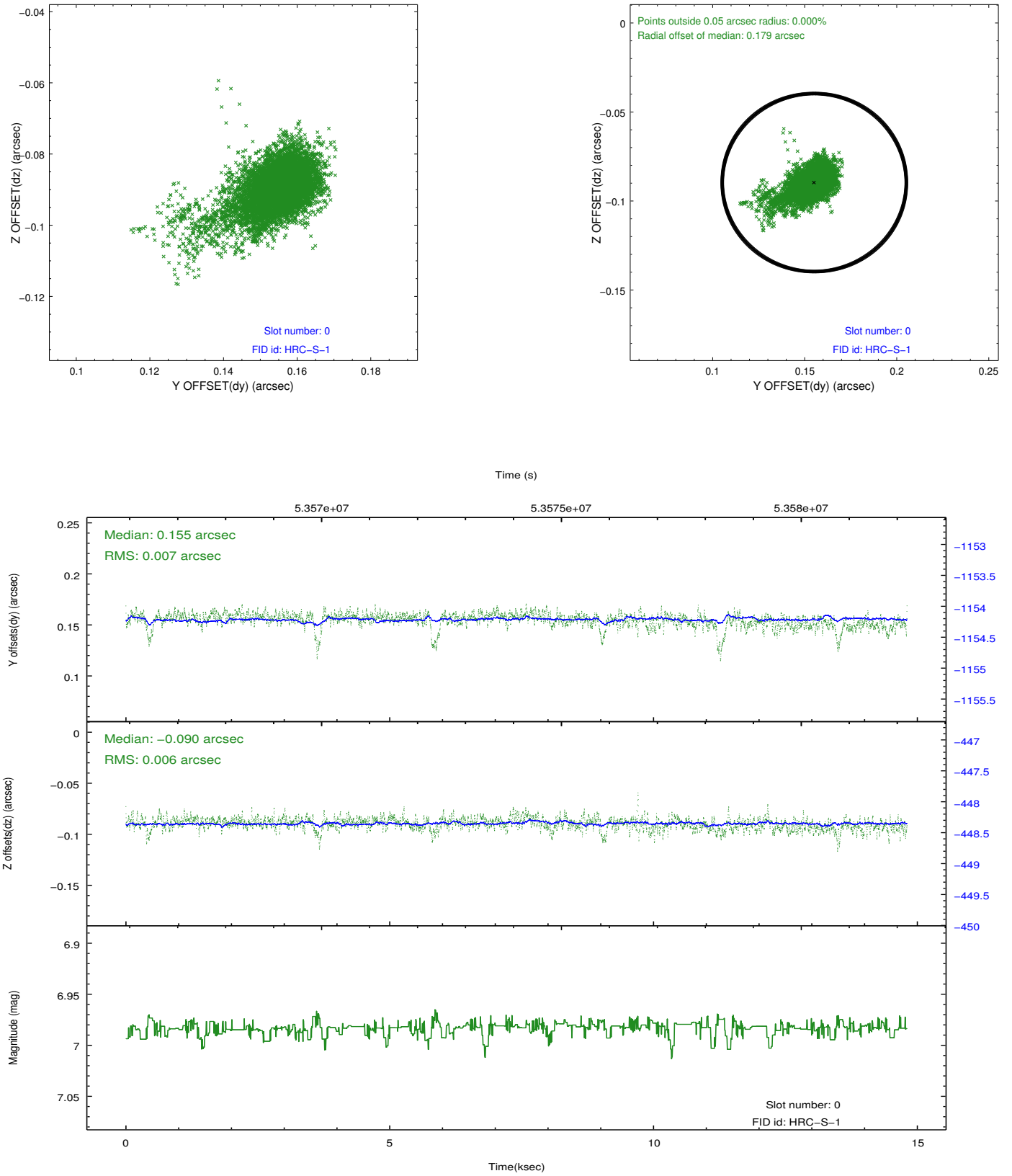


## 2.4.5 Slot 7

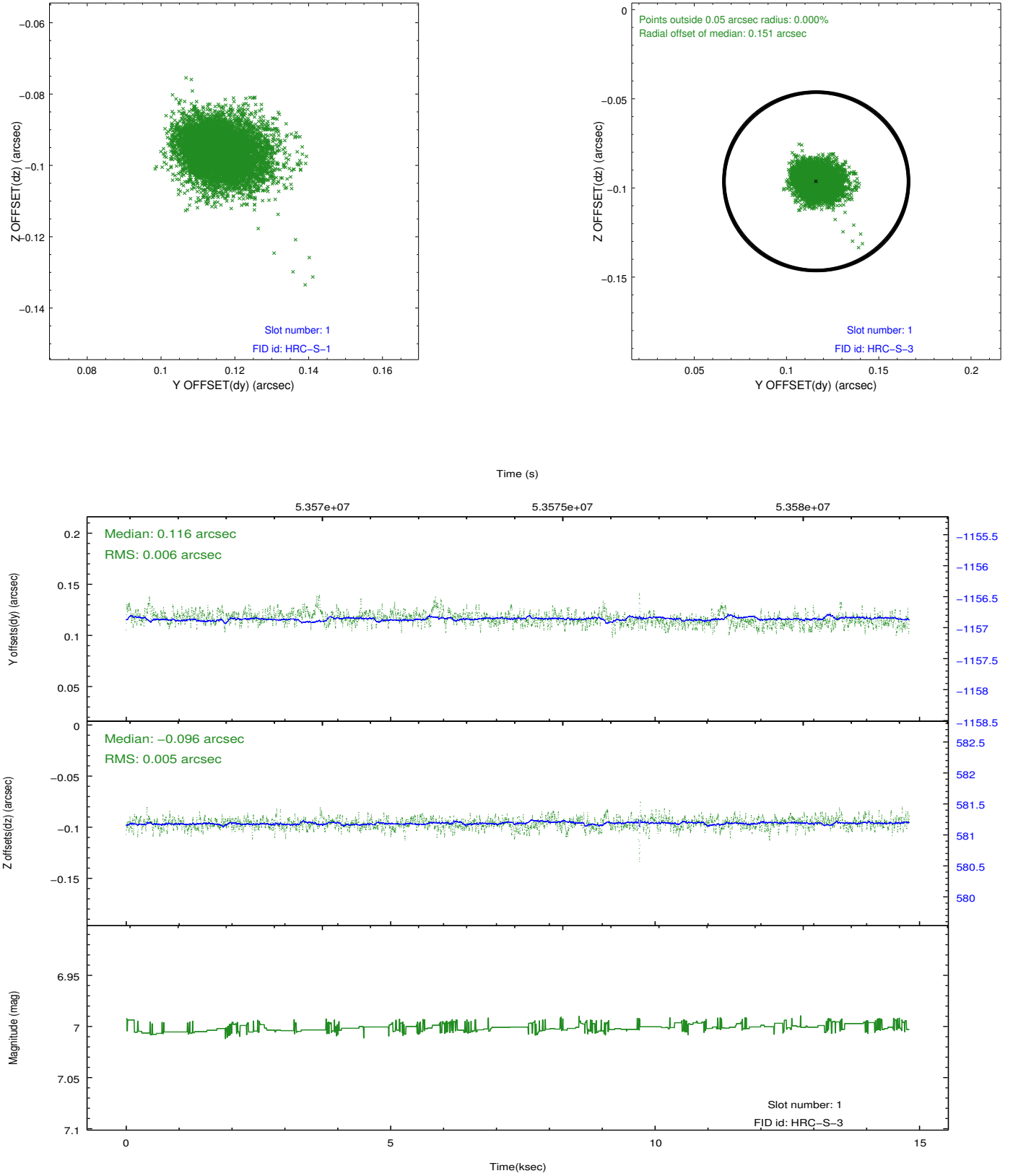


## 2.5 FID Slots

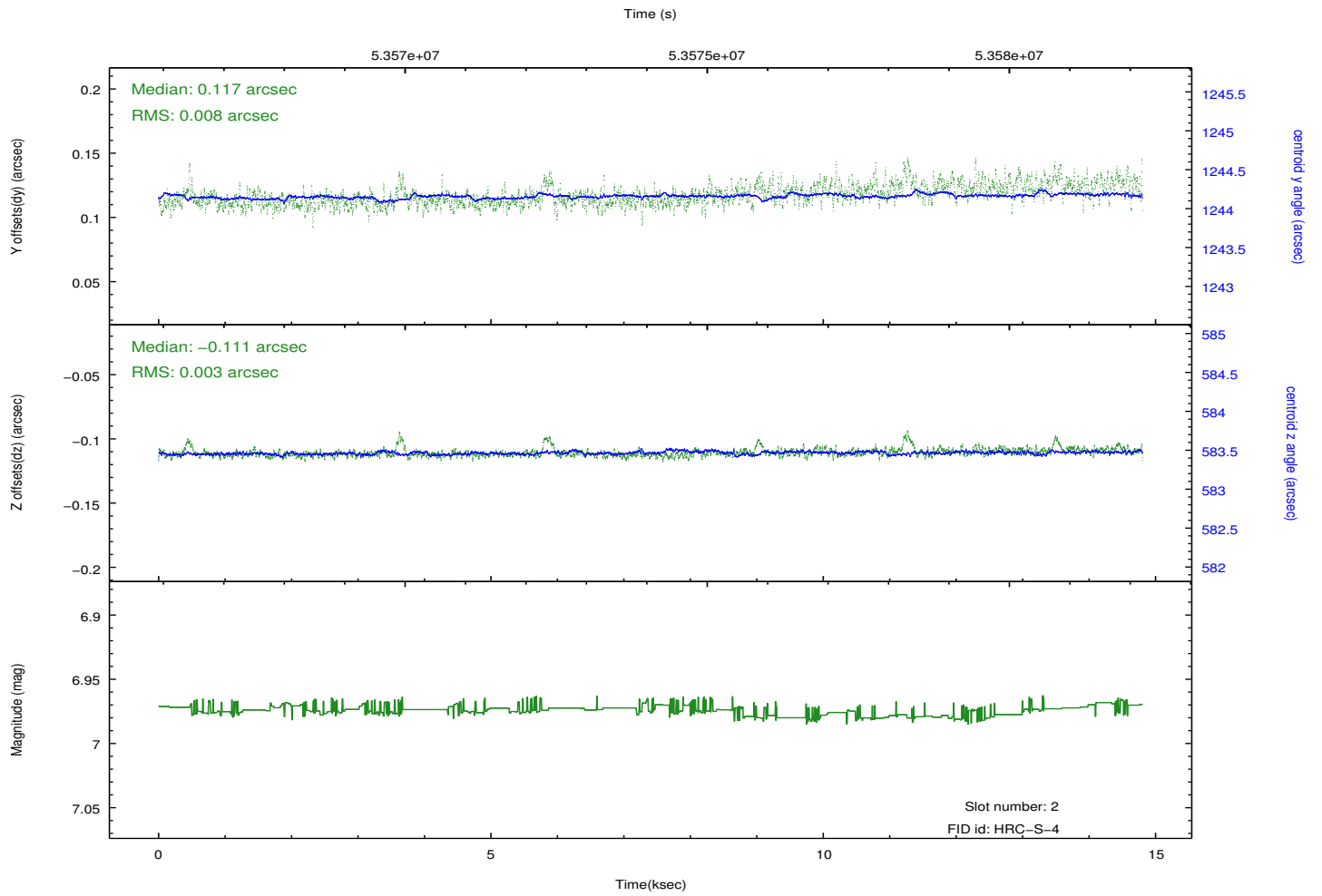
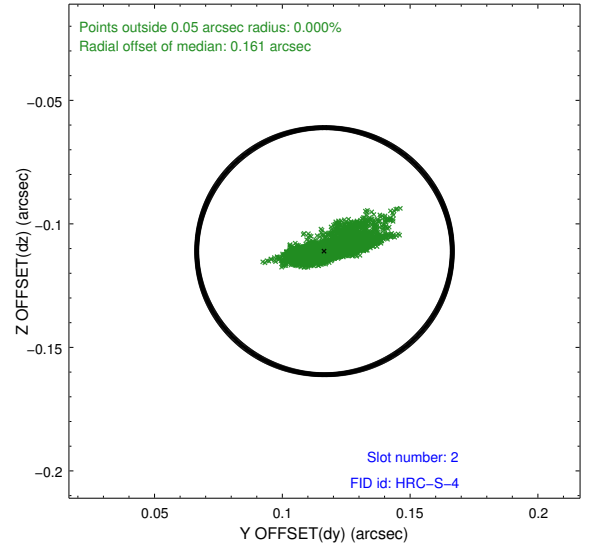
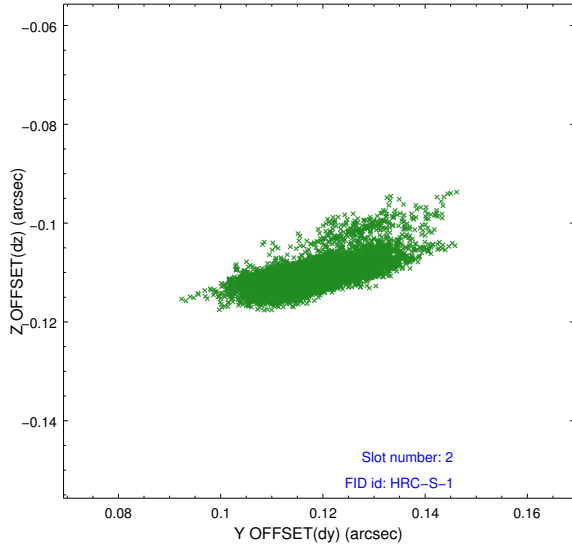
### 2.5.1 Slot 0



## 2.5.2 Slot 1

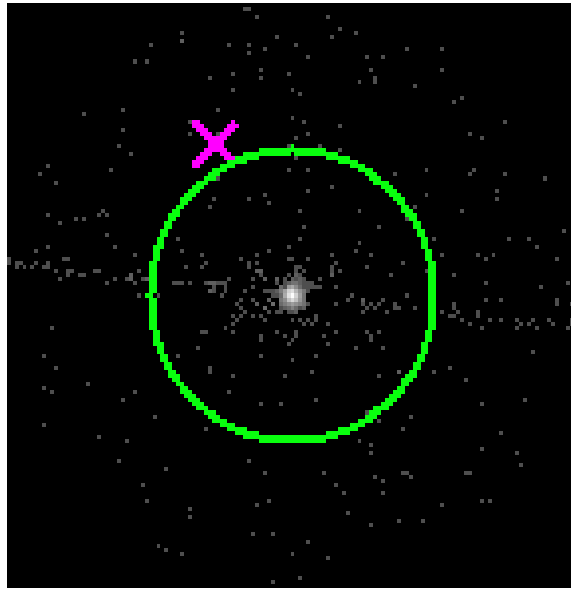


### 2.5.3 Slot 2

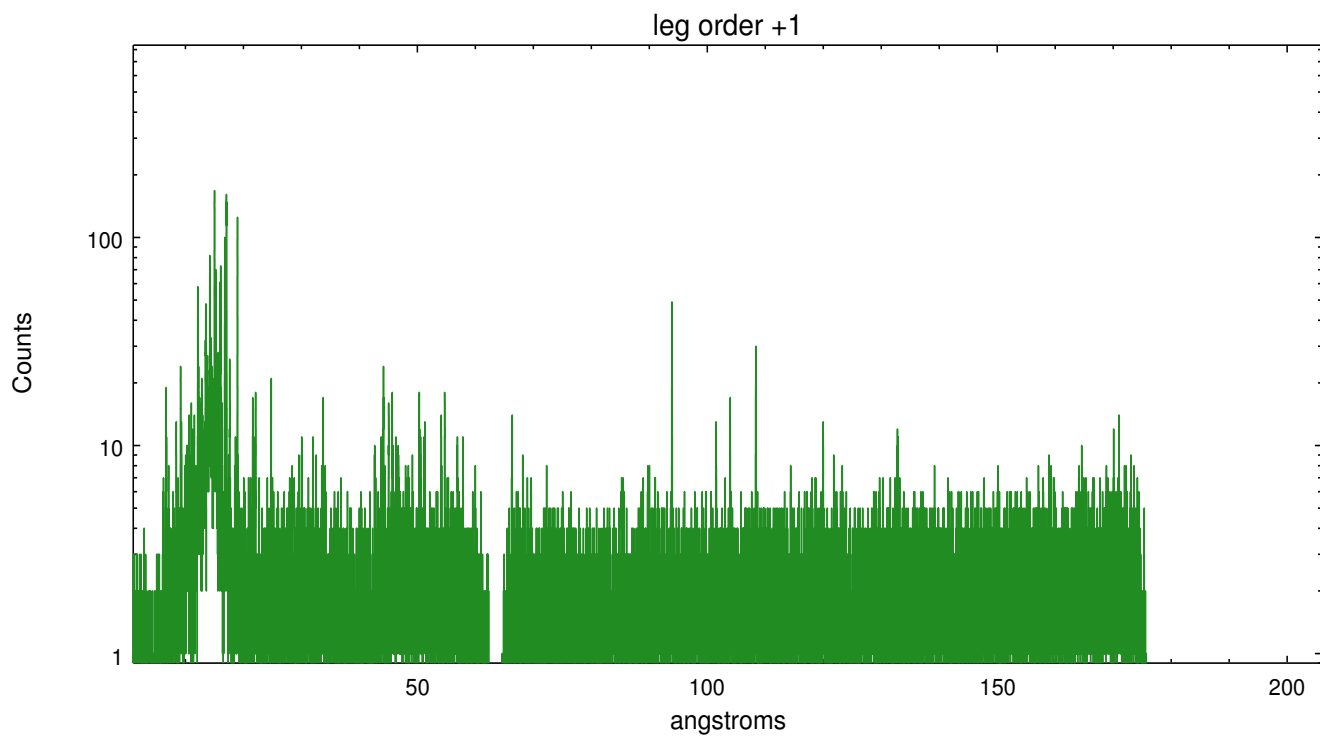
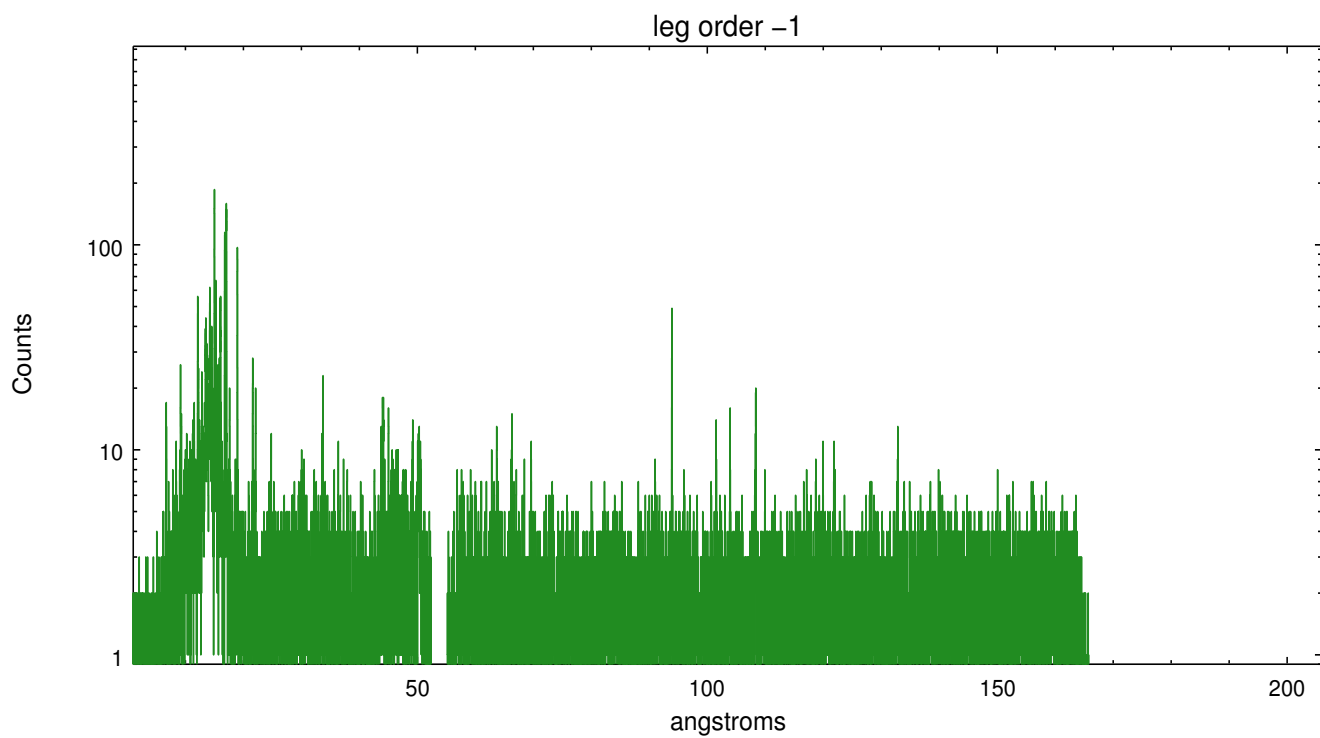


### 3 Gratings

#### 3.1 LETG Arm



LETG Zero Order



# A Summary

## A.1 Status

V&V Scientist	Joy Nichols
V&V Date (YYYY-MM-DD)	2010.05.13
V&V Edition	1
V&V Disposition and Status	OK
V&V Charge Time	14.693

## A.2 Comments