

# V&V Reference Report

## L2 ASCDS Version : 8.3.2

Observation 62443 - L2 Version 6  
Chandra X-Ray Center

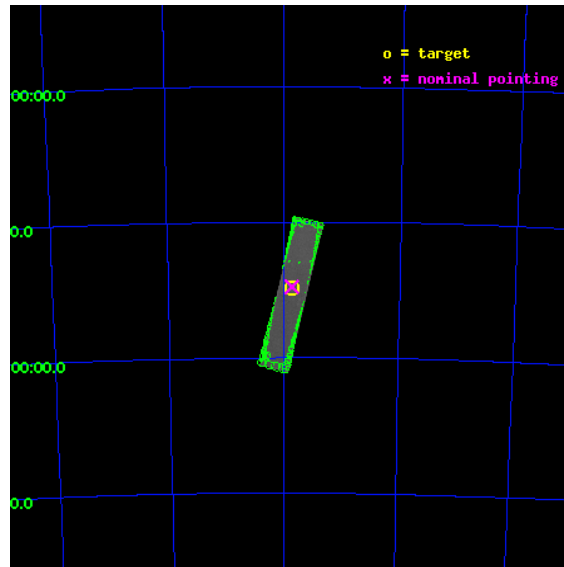
L2 Processing Date : Aug 13 2010

## Contents

<b>1</b>	<b>Front</b>	<b>2</b>
<b>2</b>	<b>OBI</b>	<b>3</b>
2.1	OBI . . . . .	3
2.1.1	Images . . . . .	3
2.1.2	Parameters . . . . .	4
2.1.3	Events . . . . .	4
2.2	Compared Parameters . . . . .	5
2.3	Aspect . . . . .	6
2.4	Star Slots . . . . .	9
2.4.1	Slot 3 . . . . .	9
2.4.2	Slot 4 . . . . .	10
2.4.3	Slot 5 . . . . .	11
2.4.4	Slot 6 . . . . .	12
2.4.5	Slot 7 . . . . .	13
2.5	FID Slots . . . . .	14
2.5.1	Slot 0 . . . . .	14
2.5.2	Slot 1 . . . . .	15
2.5.3	Slot 2 . . . . .	16
<b>3</b>	<b>Point Sources</b>	<b>17</b>
<b>A</b>	<b>Summary</b>	<b>18</b>
A.1	Status . . . . .	18
A.2	Comments . . . . .	18

# 1 Front

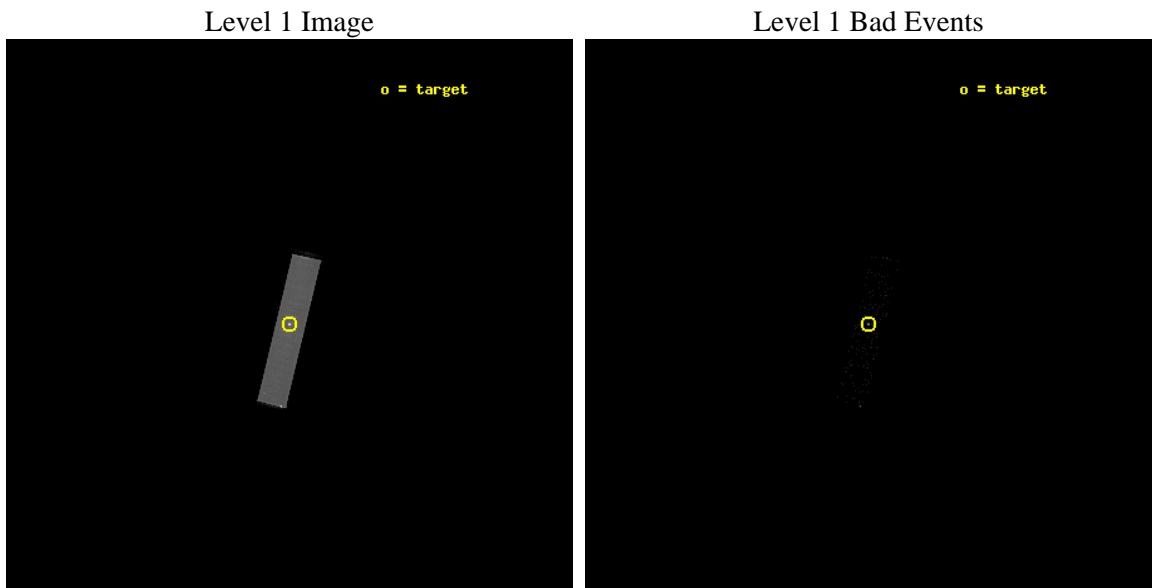
seq_num	490009	Sequence number
obs_id	62443	Observation id
title	&#160	Proposal title
observer	Dr. CXC Calibration	Principal investigator
object	LMC X-1	Source name
ra_targ	84.914583	Observer's specified target RA
dec_targ	-69.743611	Observer's specified target Dec
ra_nom	84.912661719903	Nominal RA
dec_nom	-69.738249241933	Nominal Dec
roll_nom	103.53006512583	Nominal Roll
revision	6	Processing version of data
ontime	6494.4002331868	[s]
livetime	6440.7107615719	Ontime multiplied by DTCOR
l2events	363536	Number of level 2 events



## 2 OBI

### 2.1 OBI

#### 2.1.1 Images



## 2.1.2 Parameters

obi_num	0	Obi number	sched_exp_time	36000.000000	Scheduled observation exposure time
ascdsver	8.3.2	Processing system revision	ontime	6494.4002331868	[s]
caldbver	4.3.0	&#160	ll events	465772	Number of level 1 events
date	2010-08-13T22:46:44	Date and time of file creation			
revision	4	Processing version of data			

## 2.1.3 Events

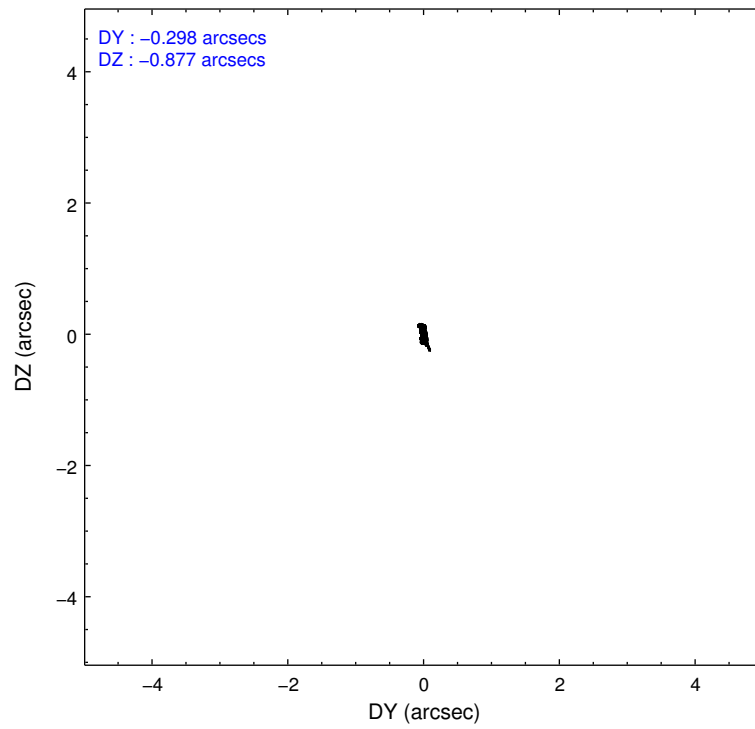
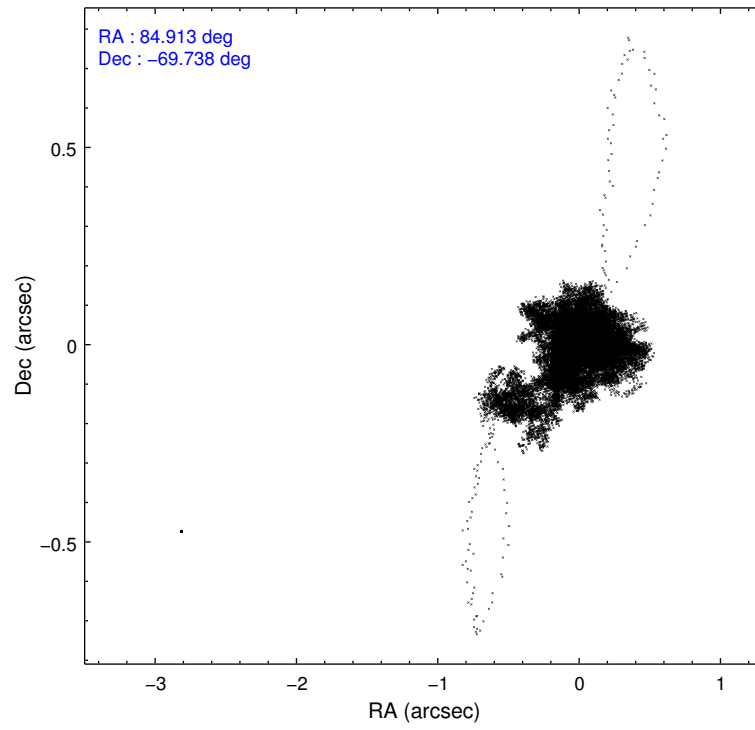
### Level 1 Events

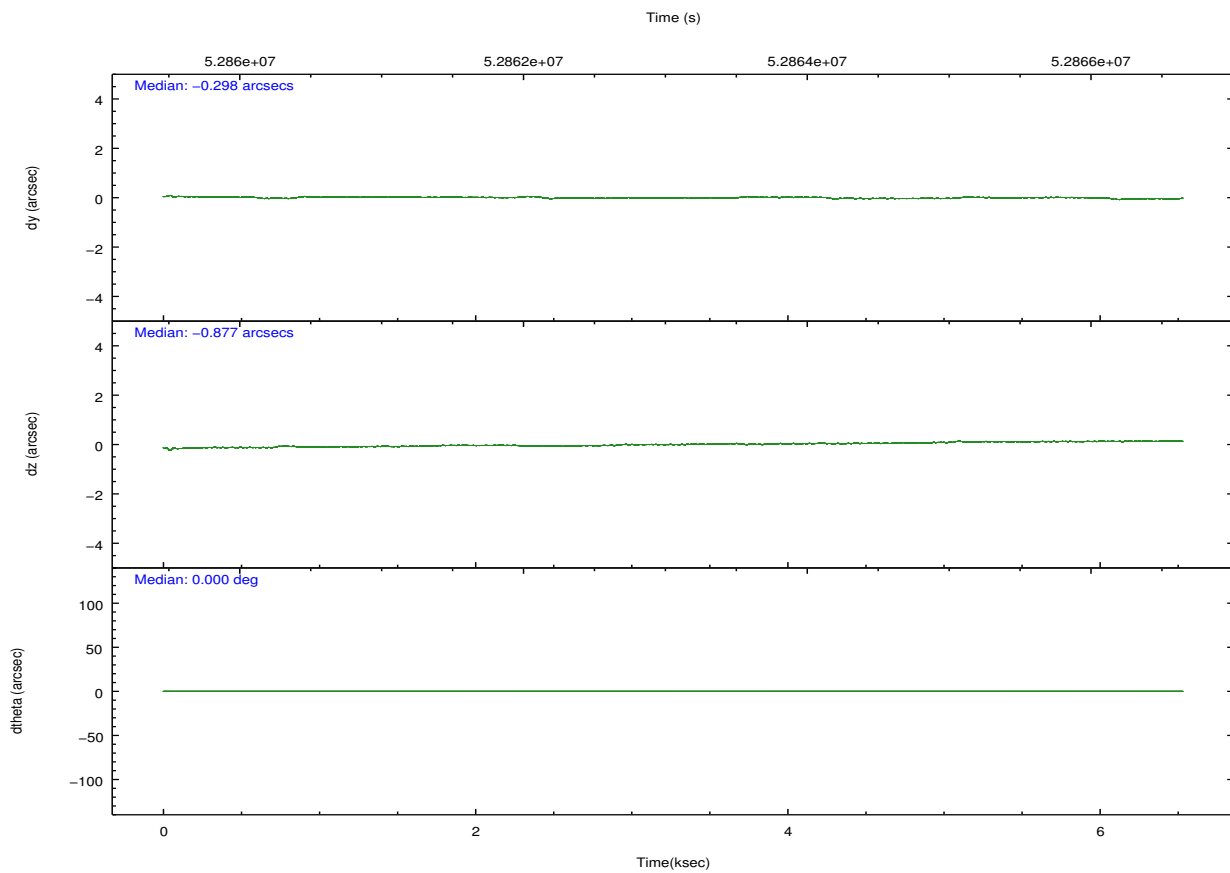
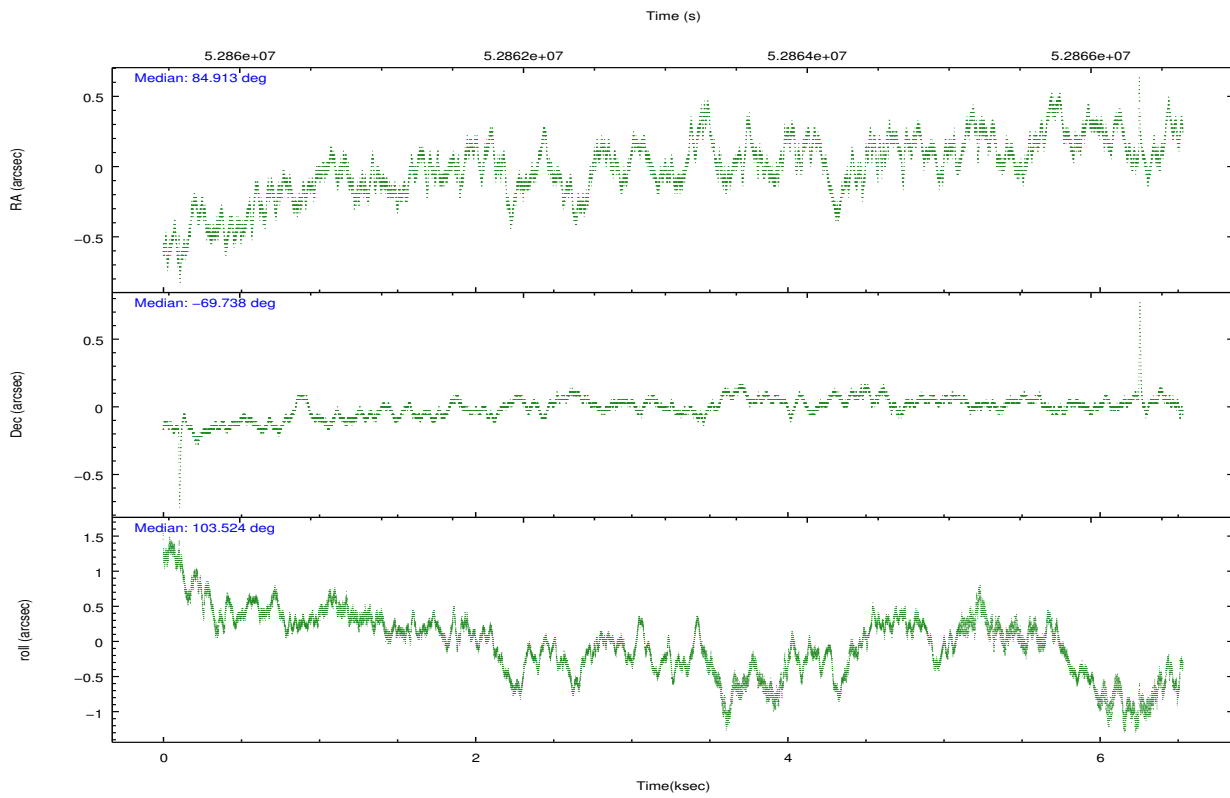
	segment 1	segment 2	segment 3
level 1 events	0	465772	0
rejected events	0	3288	0
rejected %	0%	0%	0%

## 2.2 Compared Parameters

Parameter	Planned	Actual	Parameter	Planned	Actual
Instrument	HRC	HRC	Obspar format version number	6	6
Detector	HRC-S	HRC-S	Obspar file type	PREDICTED	ACTUAL
Grating	NONE	NONE	Obspar update status	OVERRIDE	OVERRIDE
Data mode	OBSERVING	OBSERVING			
Observation mode	POINTING	POINTING			
Pointing RA	84.91266913202365	84.91266171990254			
Pointing Dec	-69.73824731924188	-69.73824924193283			
Pointing Roll	103.530072717644	103.530065125834			
Window start time	52856164.184000	52856164.184000			
Window stop time	52892164.184000	52892164.184000			
SIM focus pos (mm)	-1.016036269358593	-1.016036269358593			
SIM defocus (mm)	0.5173002937971505	0.5173002937971505			
SIM translation stage pos (mm)	250.466033080201	250.466033080201			
SIM translation stage offset (mm)	-0.0100572612062706	-0.0100572612062706			
Observation start time	52859785.186626	52859785.186626			
Observation start date	1999-09-04T19:16:25	1999-09-04T19:16:25			
Observation end time	52866320.447000	52866320.447			
Observation end date	1999-09-04T21:19:02	1999-09-04T21:05:20			

## 2.3 Aspect



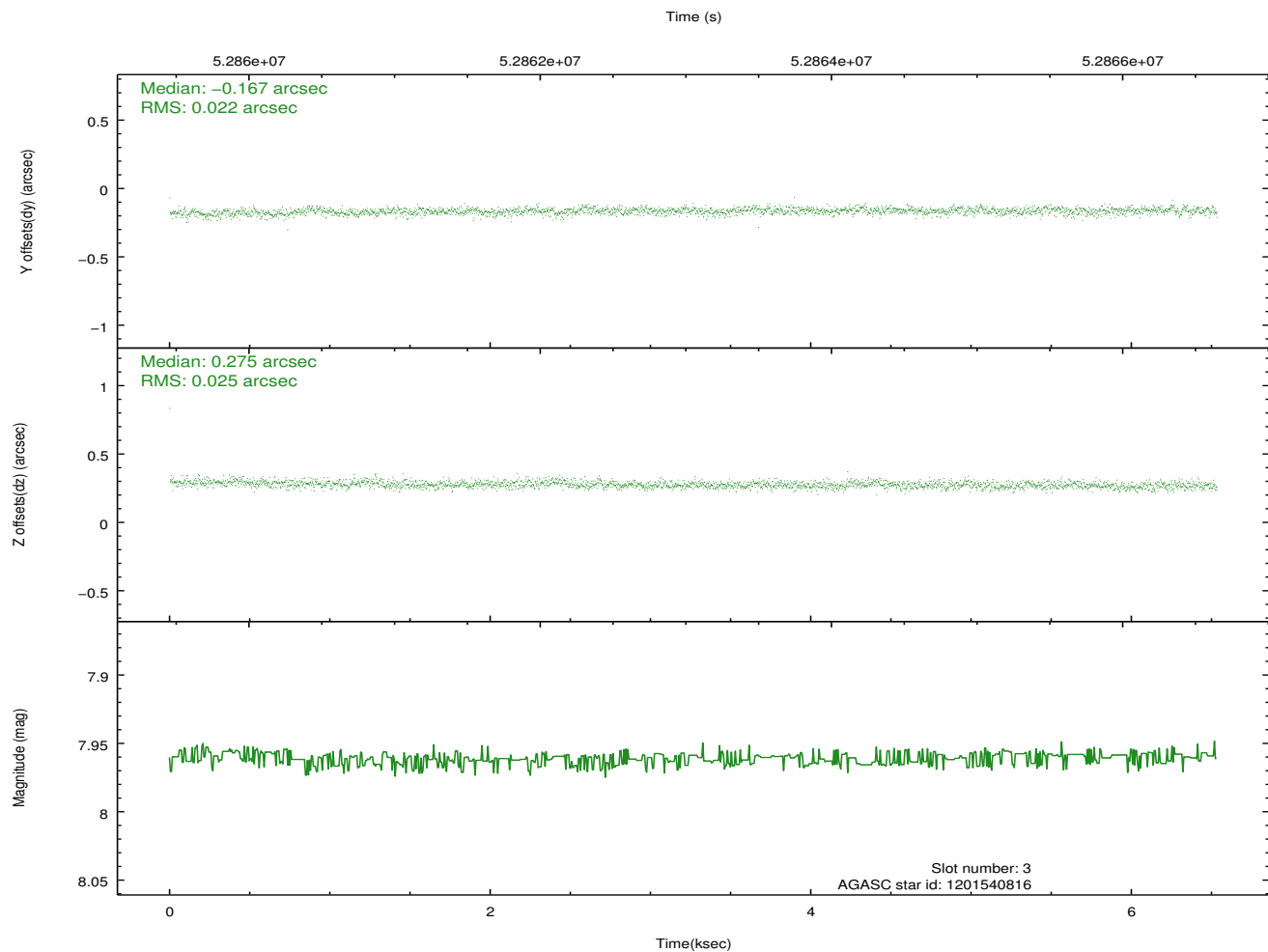
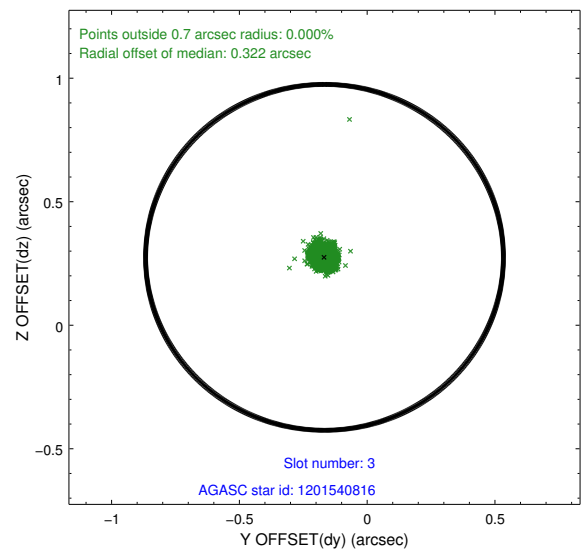
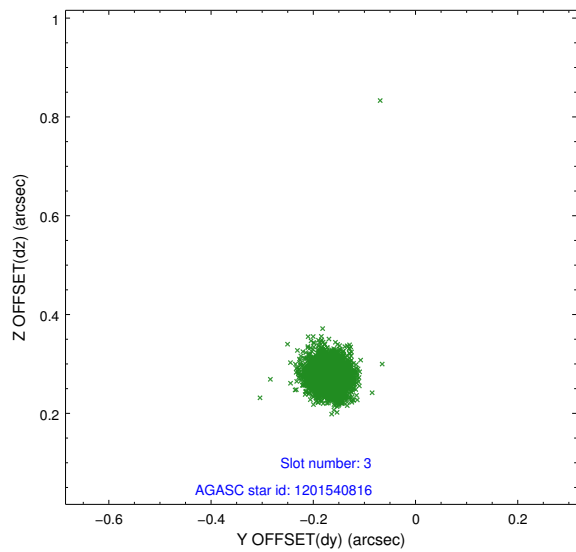


### Slot Statistics

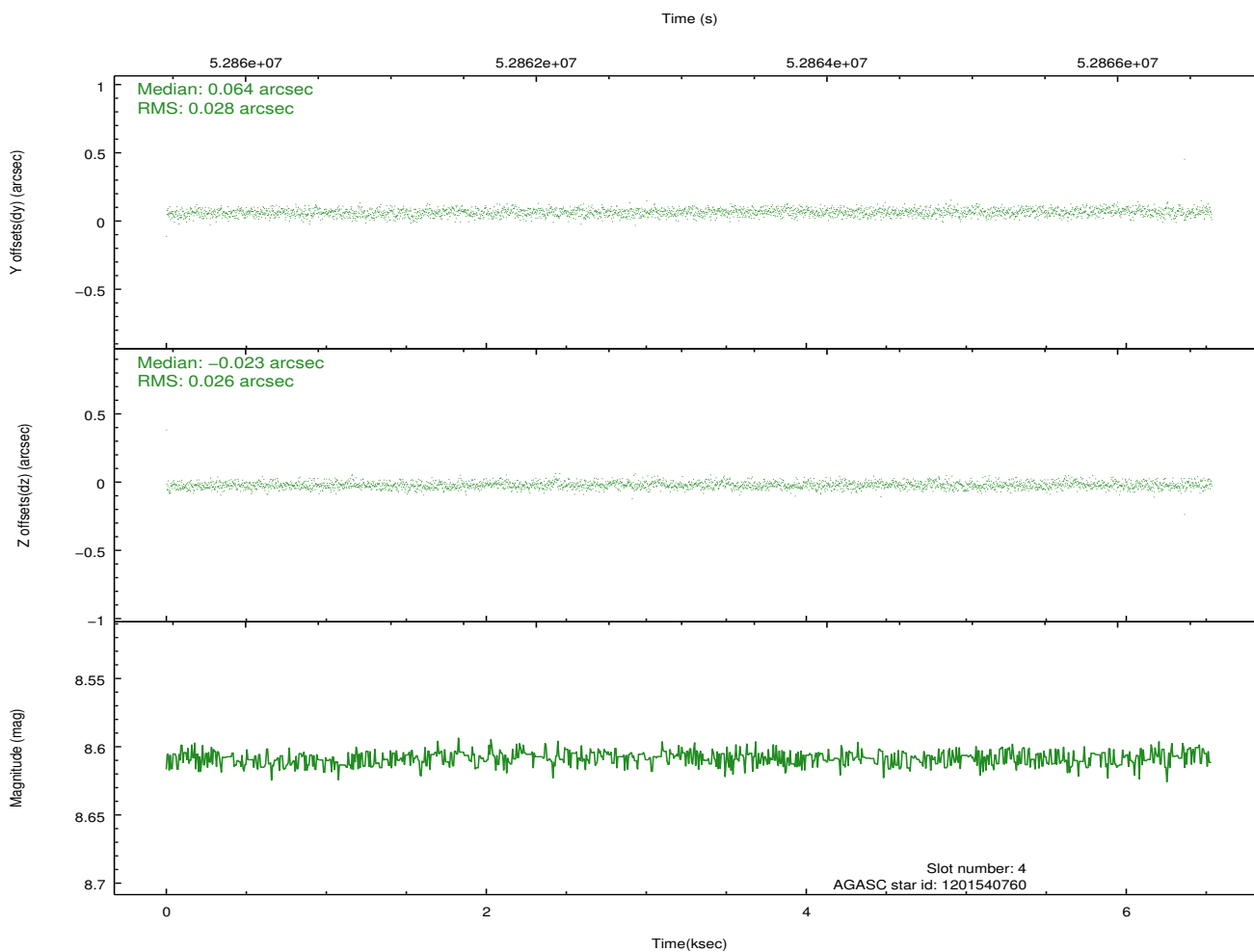
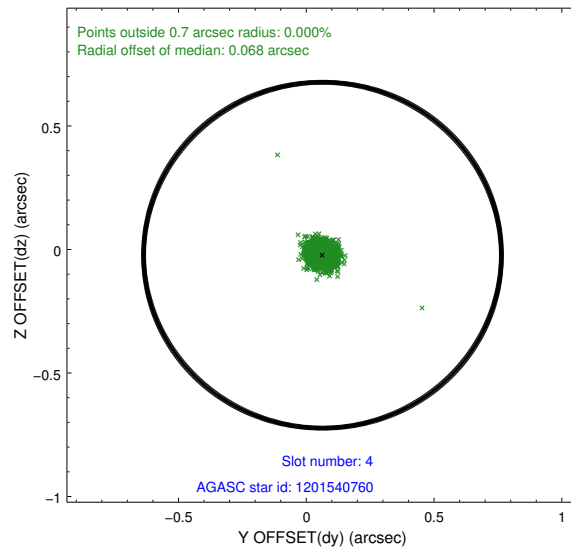
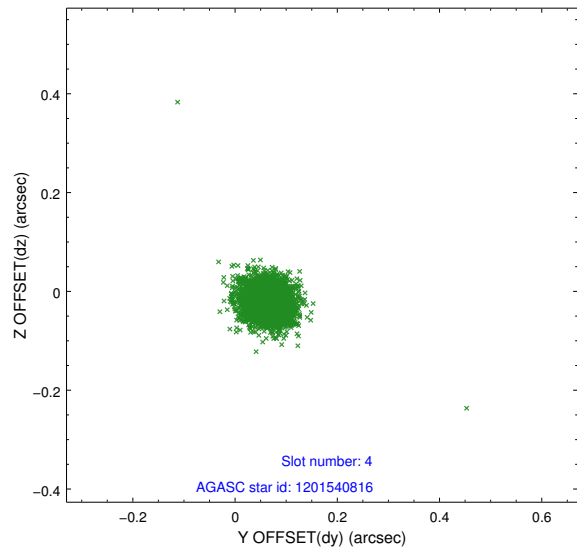
slot	status	id	mag	n_pts	med_dy	med_dz	dr1	dr2	ra	dec	mean_y	mean_z
0	BAD	HRC-S-1	7.00	2095	0.041	0.201	0.015	0.029	0.000000	0.000000	-1153.84	-447.11
1	BAD	HRC-S-3	7.00	2914	0.064	0.049	0.014	0.024	0.000000	0.000000	-1156.88	582.19
2	FID	HRC-S-4	6.99	3187	0.139	-0.097	0.000	0.000	0.000000	0.000000	1244.30	584.81
3	GUIDE	1201540816	7.96	3188	-0.167	0.275	0.032	0.054	86.998494	-69.749817	-599.64	-2451.90
4	GUIDE	1201540760	8.61	3188	0.064	-0.023	0.039	0.064	84.403691	-70.419249	-2155.16	1222.54
5	GUIDE	1201411368	10.05	3180	-0.146	-0.161	0.089	0.152	83.629696	-70.495613	-2220.64	2193.20
6	GUIDE	1200883536	9.87	3184	0.111	0.051	0.081	0.134	83.119228	-69.218429	2408.68	1855.76
7	GUIDE	1201020088	10.48	3181	0.141	-0.143	0.114	0.186	86.319248	-68.997756	2239.89	-2325.07

## 2.4 Star Slots

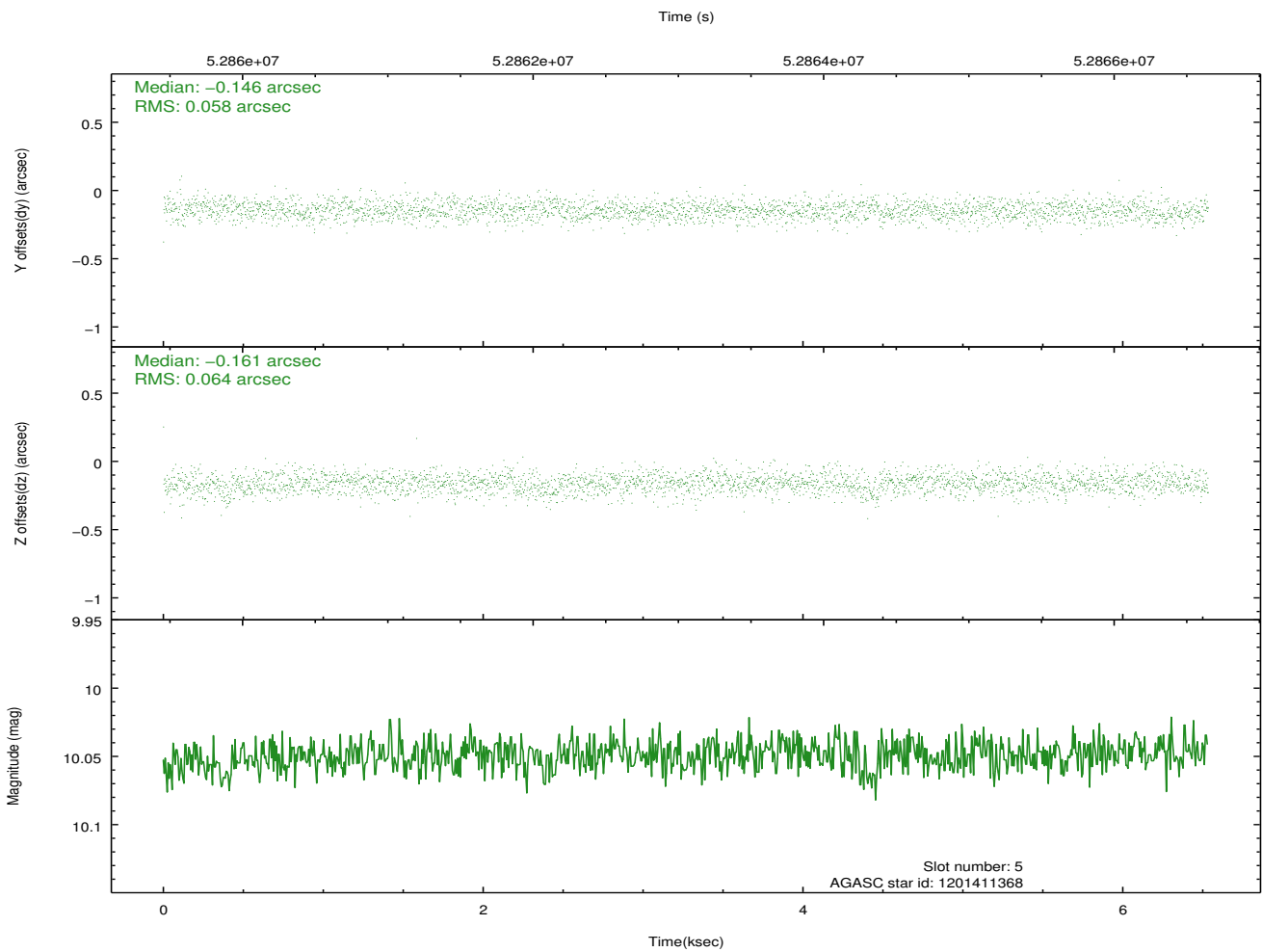
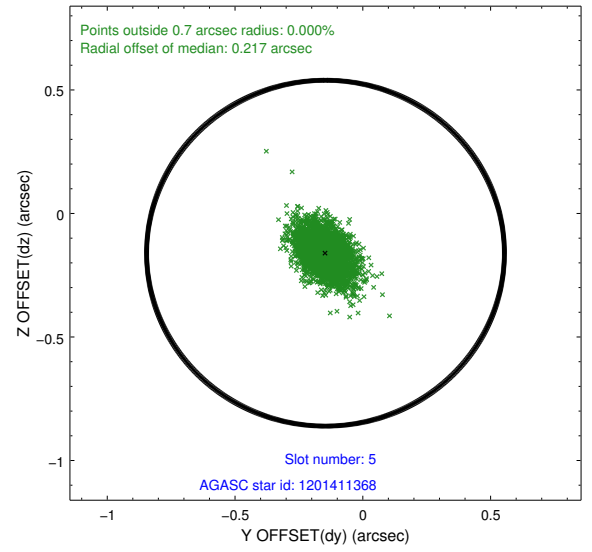
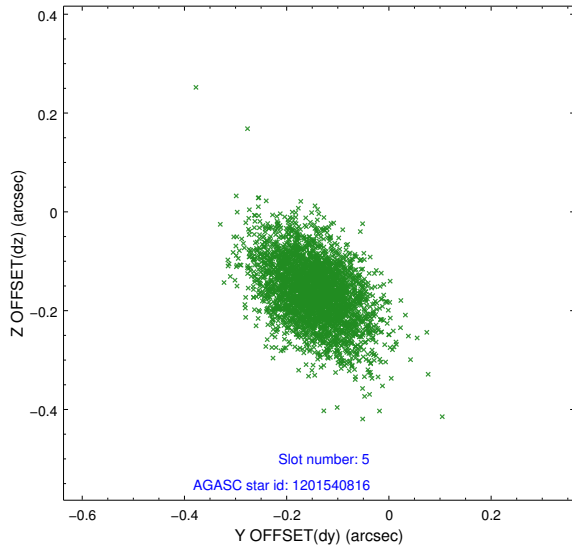
### 2.4.1 Slot 3



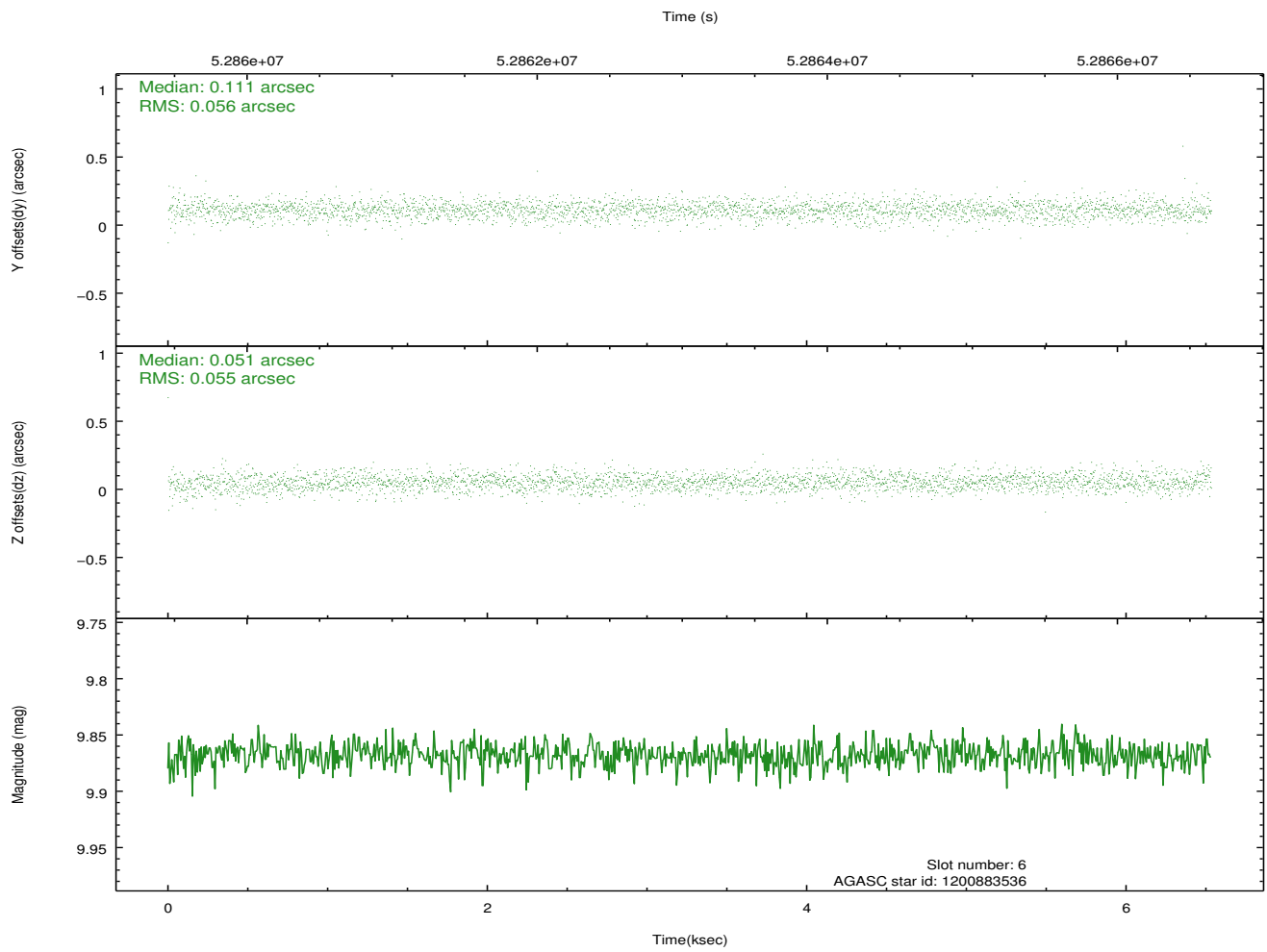
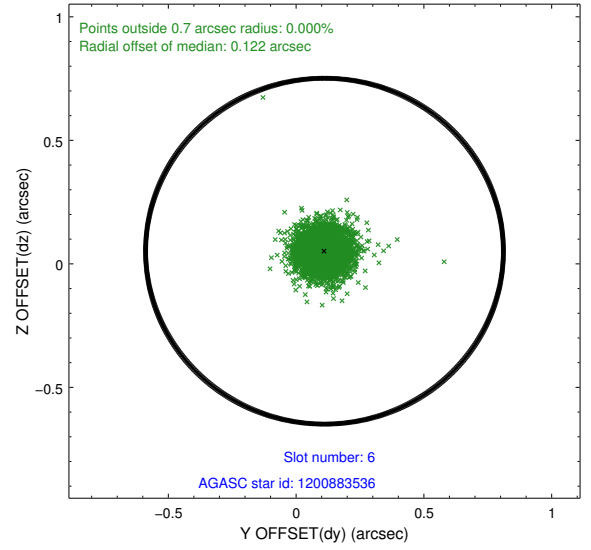
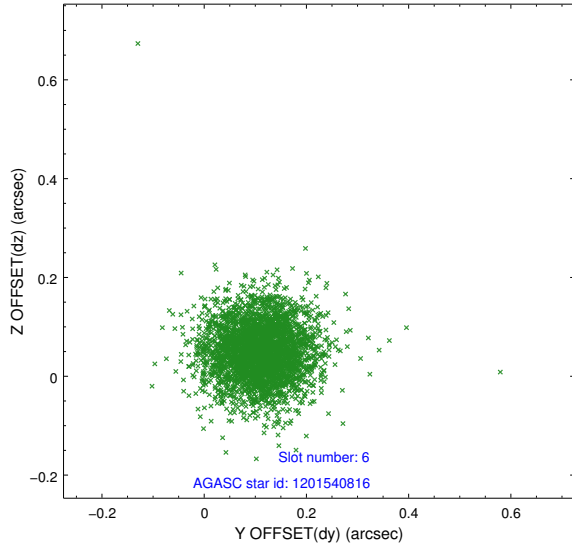
## 2.4.2 Slot 4



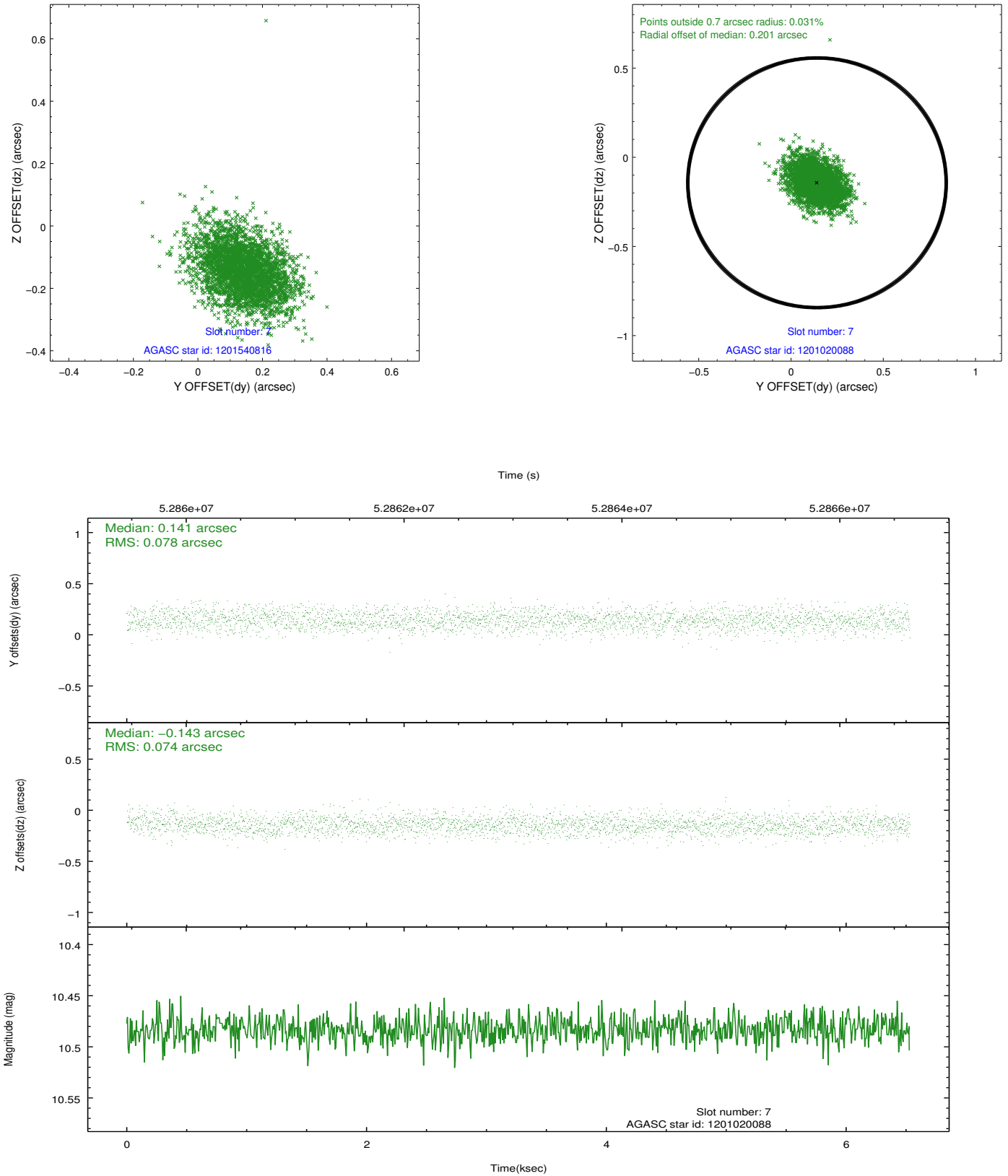
### 2.4.3 Slot 5



## 2.4.4 Slot 6

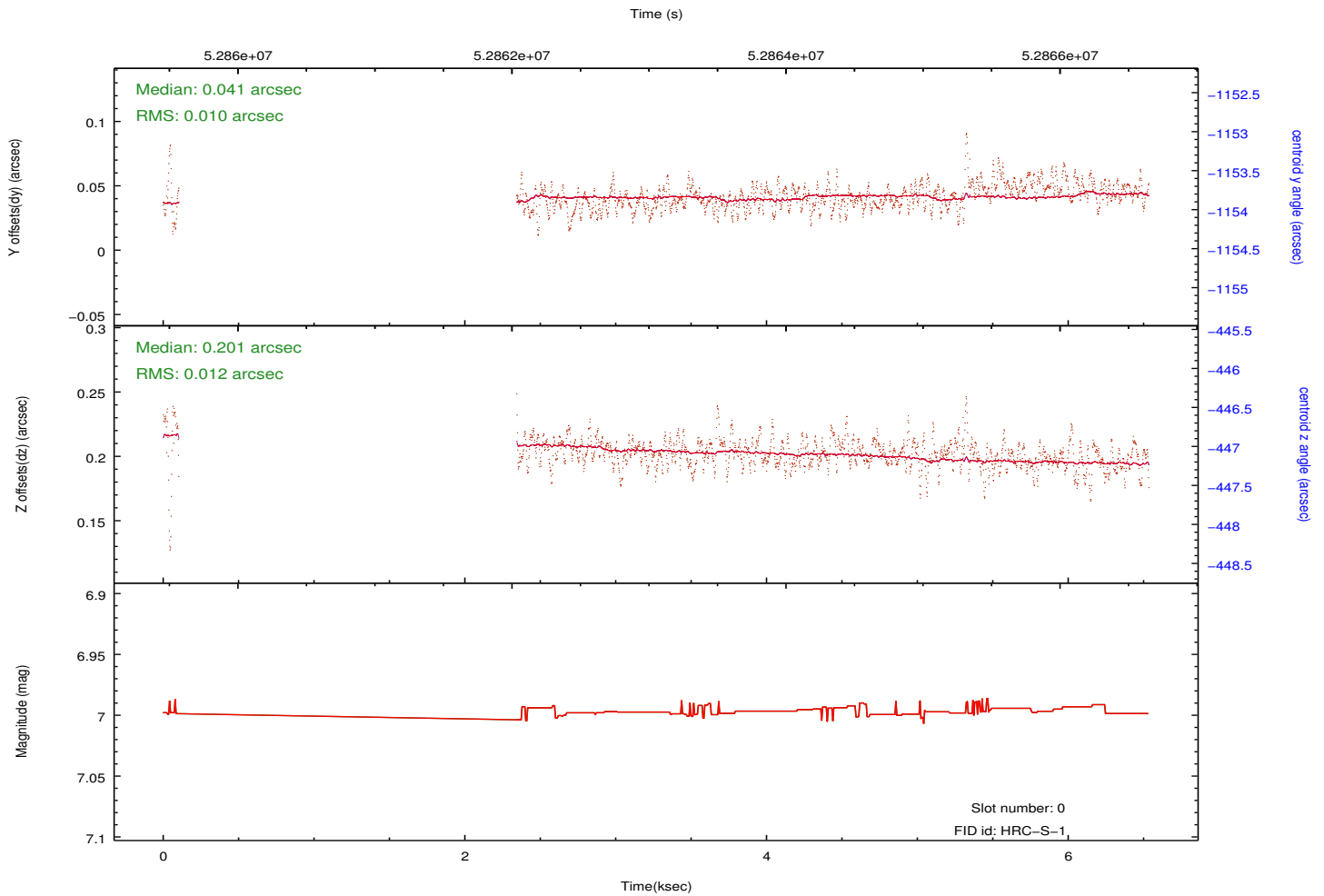
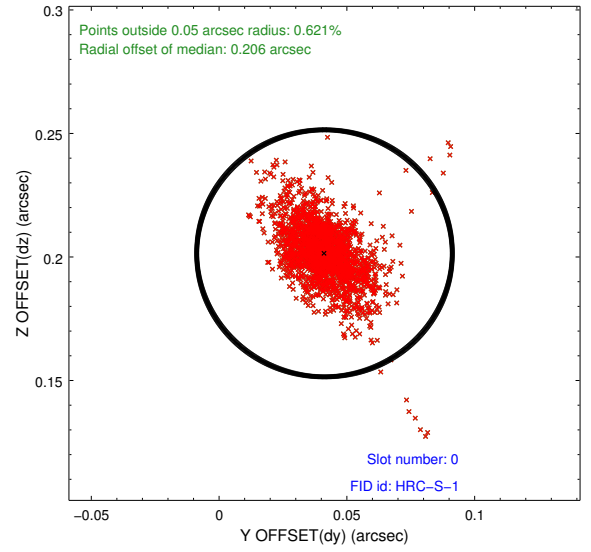
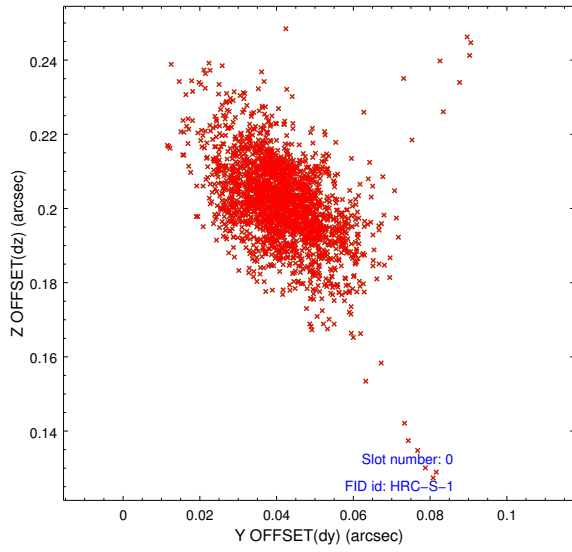


## 2.4.5 Slot 7

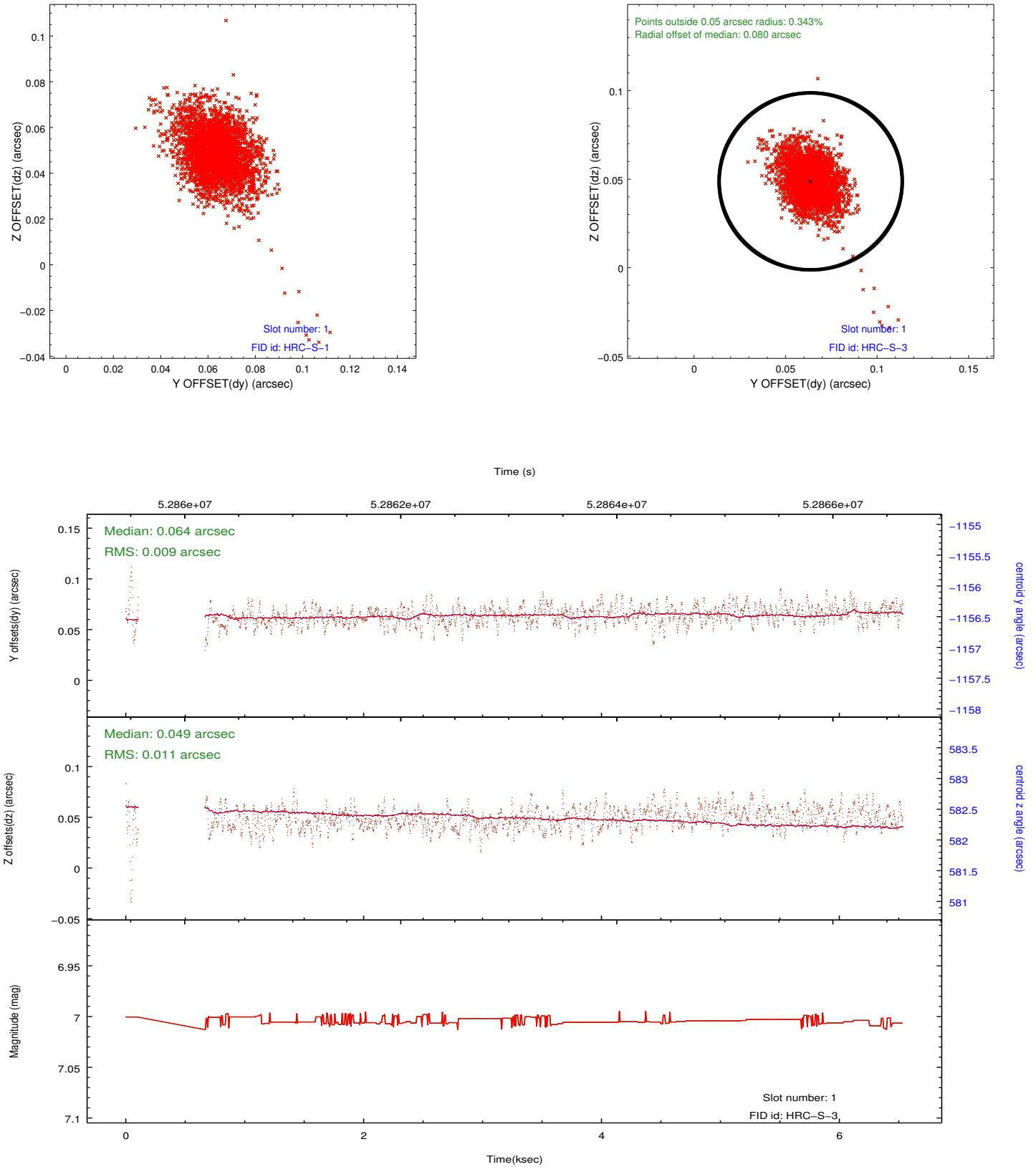


## 2.5 FID Slots

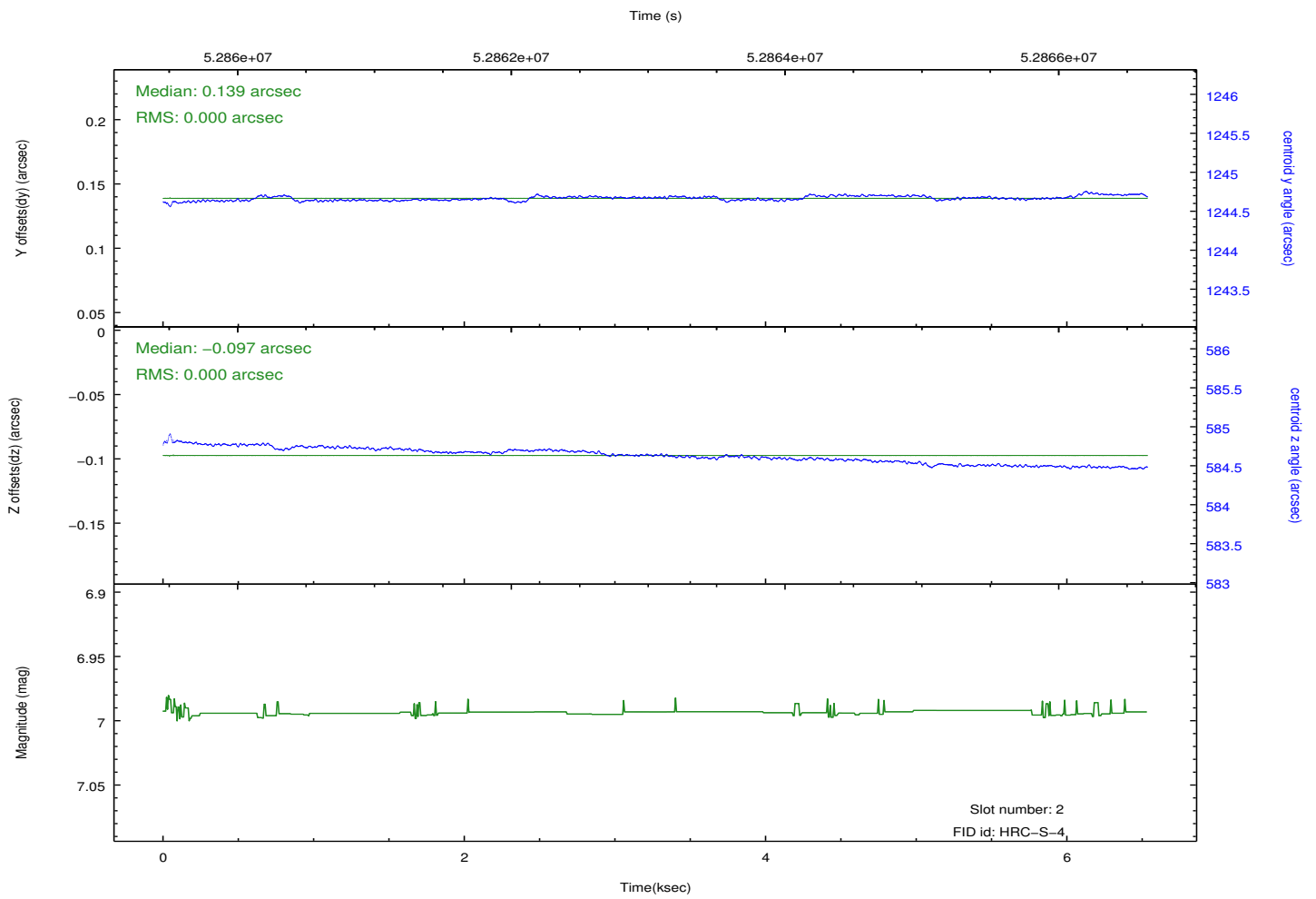
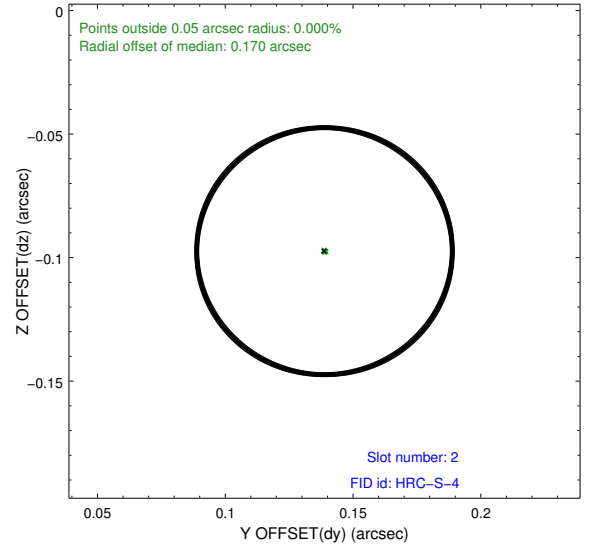
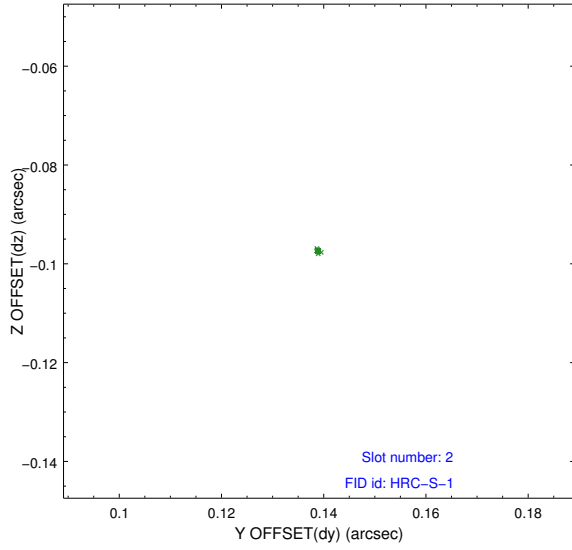
### 2.5.1 Slot 0



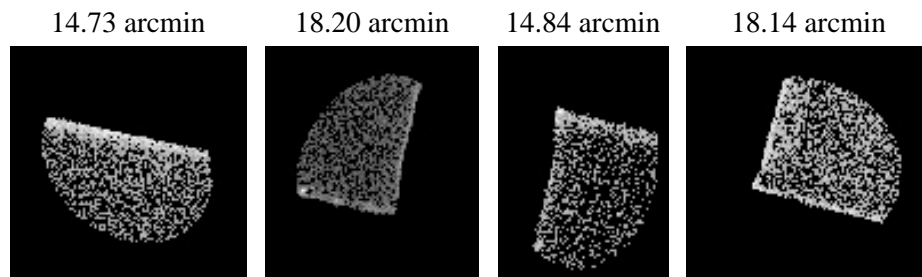
## 2.5.2 Slot 1



### 2.5.3 Slot 2



### 3 Point Sources



# A Summary

## A.1 Status

V&V Scientist	Joy Nichols
V&V Date (YYYY-MM-DD)	2010.08.16
V&V Edition	1
V&V Disposition and Status	OK
V&V Charge Time	5

## A.2 Comments

HRC-S focus test run. This is a +Y shutter scan. At day 247, 2105, SIM was moved away from focus position to -532 steps. However, the obsid was not changed for 14 minutes. Therefore the last 14 minutes of this observation produced an offset in the image from the remainder of the observation. For this processing, the last 14 minutes of the observation were not included.

====

2 of the 3 fid lights are bad because of the shutter moves block them.===

Dither turned off for this observation. ===

Charge time for this ObsId remains at original value of 5.00 ks, although with the current processing the charge time would have been 6.527 ksec.