

V&V Reference Report

L2 ASCDS Version : 8.5.1.1

Observation 6293 - L2 Version 3
Chandra X-Ray Center

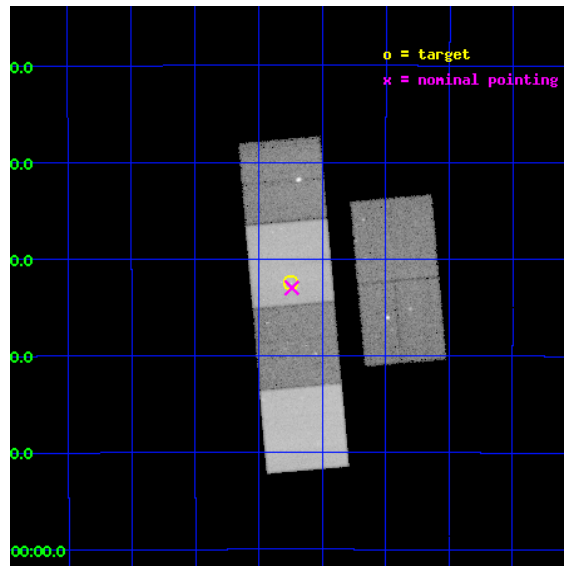
L2 Processing Date : Dec 26 2012

Contents

1	Front	2
2	OBI	3
2.1	OBI	3
2.1.1	Images	3
2.1.2	Bias	3
2.1.3	Parameters	4
2.1.4	Events	4
2.2	Compared Parameters	5
2.3	Aspect	6
2.4	Star Slots	9
2.4.1	Slot 3	9
2.4.2	Slot 4	10
2.4.3	Slot 5	11
2.4.4	Slot 6	12
2.4.5	Slot 7	13
2.5	FID Slots	14
2.5.1	Slot 0	14
2.5.2	Slot 1	15
2.5.3	Slot 2	16
A	Summary	17
A.1	Status	17
A.2	Comments	17

1 Front

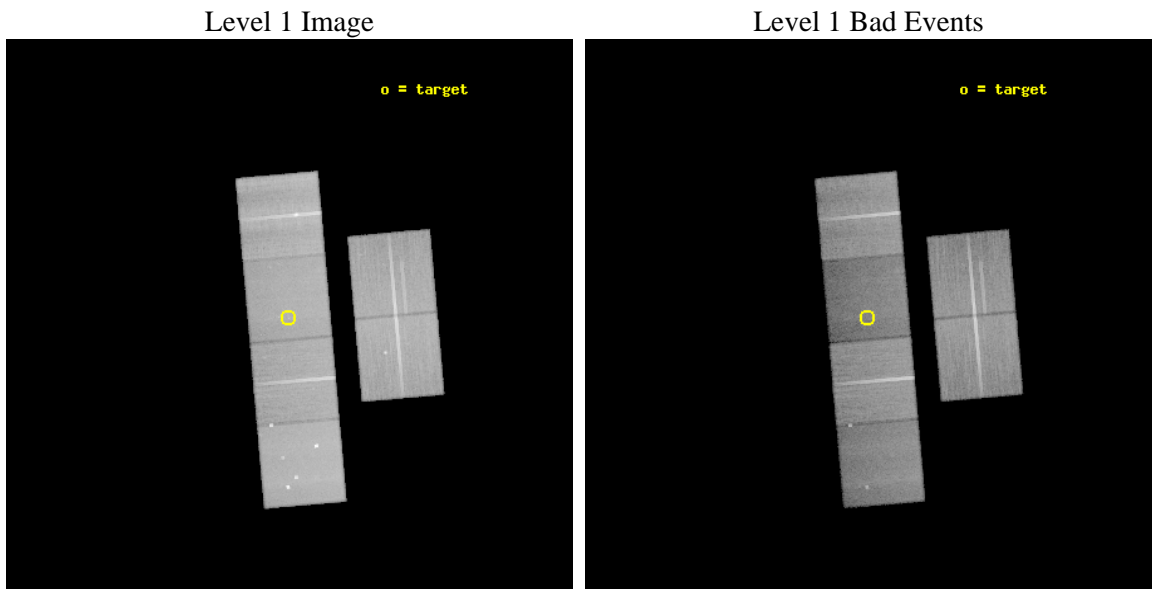
seq_num	500604	Sequence number
obs_id	6293	Observation id
title	A Day in the Life of a Short Gamma-Ray Burst Afterglow	Proposal ti
observer	Prof. David Burrows	Principal investigator
object	GRB050724	Source name
dtycycle	0	
cycle	P	events from which exps? Prim/Second/Both
ra_targ	246.1875	Observer's specified target RA [deg]
dec_targ	-27.540333	Observer's specified target Dec [deg]
ra_nom	246.18464412349	Nominal RA [deg]
dec_nom	-27.549686024258	Nominal Dec [deg]
roll_nom	264.94385302569	Nominal Roll [deg]
revision	3	Processing version of data
ontime	49955.199813902	Sum of GTIs [s]
livetime	49322.636994449	Livetime [s]
ontime2	49951.958823591	Sum of GTIs [s]
ontime3	49945.476952642	Sum of GTIs [s]
ontime5	49955.199813902	Sum of GTIs [s]
ontime6	49955.199813902	Sum of GTIs [s]
ontime7	49955.199813902	Sum of GTIs [s]
ontime8	49945.476942569	Sum of GTIs [s]
l2events	500372	Number of level 2 events



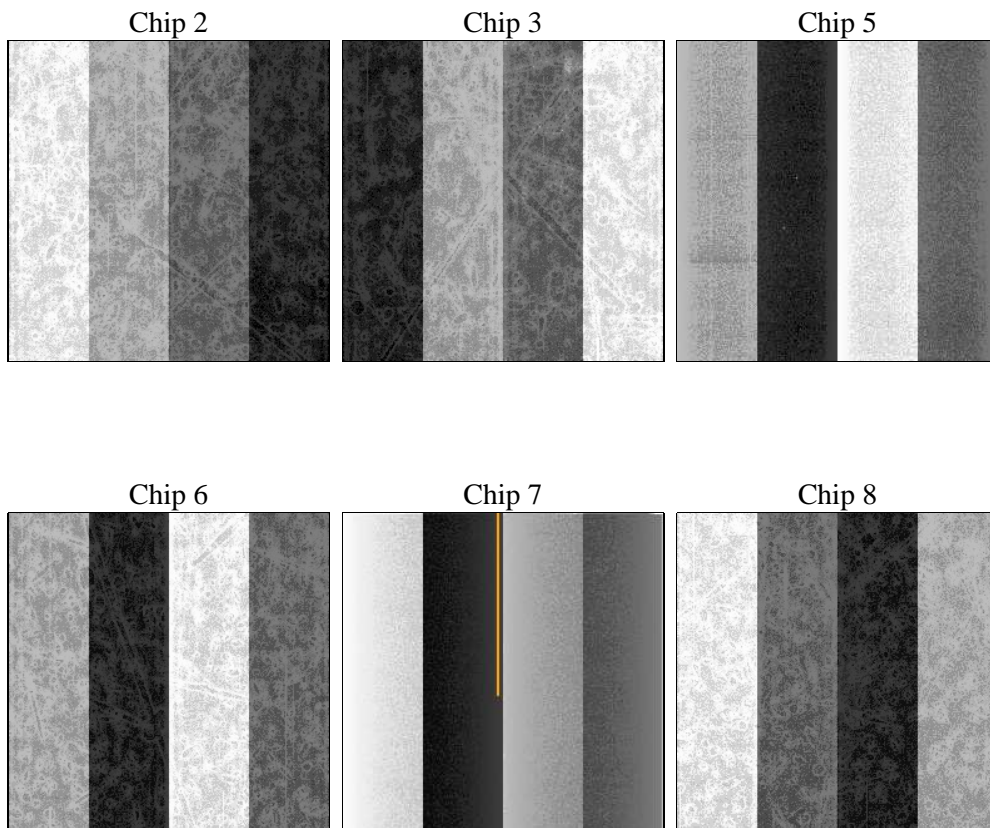
2 OBI

2.1 OBI

2.1.1 Images



2.1.2 Bias



2.1.3 Parameters

obi_num	0	Obi number	sched_exp_time	50000.000000	[s] Scheduled observation exposure time
ascdsver	8.5.1.1	Processing system revision	ontime	49955.199813902	Sum of GTIs [s]
caldbver	4.5.5	 	ontime2	49951.958823591	Sum of GTIs [s]
date	2012-12-26T17:47:00	Date and time of file creation	ontime3	49945.476952642	Sum of GTIs [s]
revision	3	Processing version of data	ontime5	49955.199813902	Sum of GTIs [s]
			ontime6	49955.199813902	Sum of GTIs [s]
			ontime7	49955.199813902	Sum of GTIs [s]
			ontime8	49945.476942569	Sum of GTIs [s]
			l1events	2132913	Number of level 1 events

2.1.4 Events

	ccd 2	ccd 3	ccd 5	ccd 6	ccd 7	ccd 8		ccd 2	ccd 3	ccd 5	ccd 6	ccd 7	ccd 8
level 1 events	348031	317907	418477	330413	322103	395982	grade 0 events	14686	13106	26923	15144	17547	27467
rejected events	312154	284779	189186	292316	155646	298437		4%	4%	6%	4%	5%	6%
rejected %	89%	89%	45%	88%	48%	75%	grade 1 events	192	184	1728	175	264	298
								0%	0%	0%	0%	0%	0%
							grade 2 events	7844	6686	70318	7727	33173	22012
								2%	2%	16%	2%	10%	5%
							grade 3 events	3553	3553	8342	3924	15511	11340
								1%	1%	1%	1%	4%	2%
							grade 4 events	3659	3512	8271	3753	15512	10624
								1%	1%	1%	1%	4%	2%
							grade 5 events	9167	10465	31998	10617	33118	16170
								2%	3%	7%	3%	10%	4%
							grade 6 events	6140	6272	115451	7550	84726	26103
								1%	1%	27%	2%	26%	6%
							grade 7 events	302790	274129	155446	281523	122252	281968
								87%	86%	37%	85%	37%	71%

2.2 Compared Parameters

Parameter	Planned	Actual	Parameter	Planned	Actual
Instrument	ACIS	ACIS	Obspar format version number	7	7
Detector	ACIS-235678	ACIS-235678	Obspar file type	PREDICTED	ACTUAL
Grating	NONE	NONE	Obspar update status	NONE	UPDATED
Data mode	VFAINT	VFAINT	Number of optional ACIS chips dropped	0	0
Observation mode	POINTING	POINTING	On-chip summing requested	N	N
[deg] Pointing RA	246.171317	246.1846441234941	Subarray requested	NONE	NONE
[deg] Pointing Dec	-27.525132	-27.5496860242581	Alternating exposures requested	N	N
[deg] Pointing Roll	264.781061	264.9438530256936	[s] Primary exposure time	0.000000	3.2
[mm] SIM focus pos	-0.684267	-0.6828225247311905			
[mm] SIM defocus	0	0.001444936568705701			
[mm] SIM translation stage pos	-190.132523	-190.1400660498719			
[mm] SIM translation stage offset	0	0.00754346686406393			
[s] Observation start time (MET)	238796991.184000	238795816.33663			
Observation start date	2005-07-26T20:28:47	2005-07-26T20:10:16			
[s] Observation end time (MET)	238846991.184000	238848344.00153			
Observation end date	2005-07-27T10:22:07	2005-07-27T10:45:44			
Read mode	TIMED	TIMED			

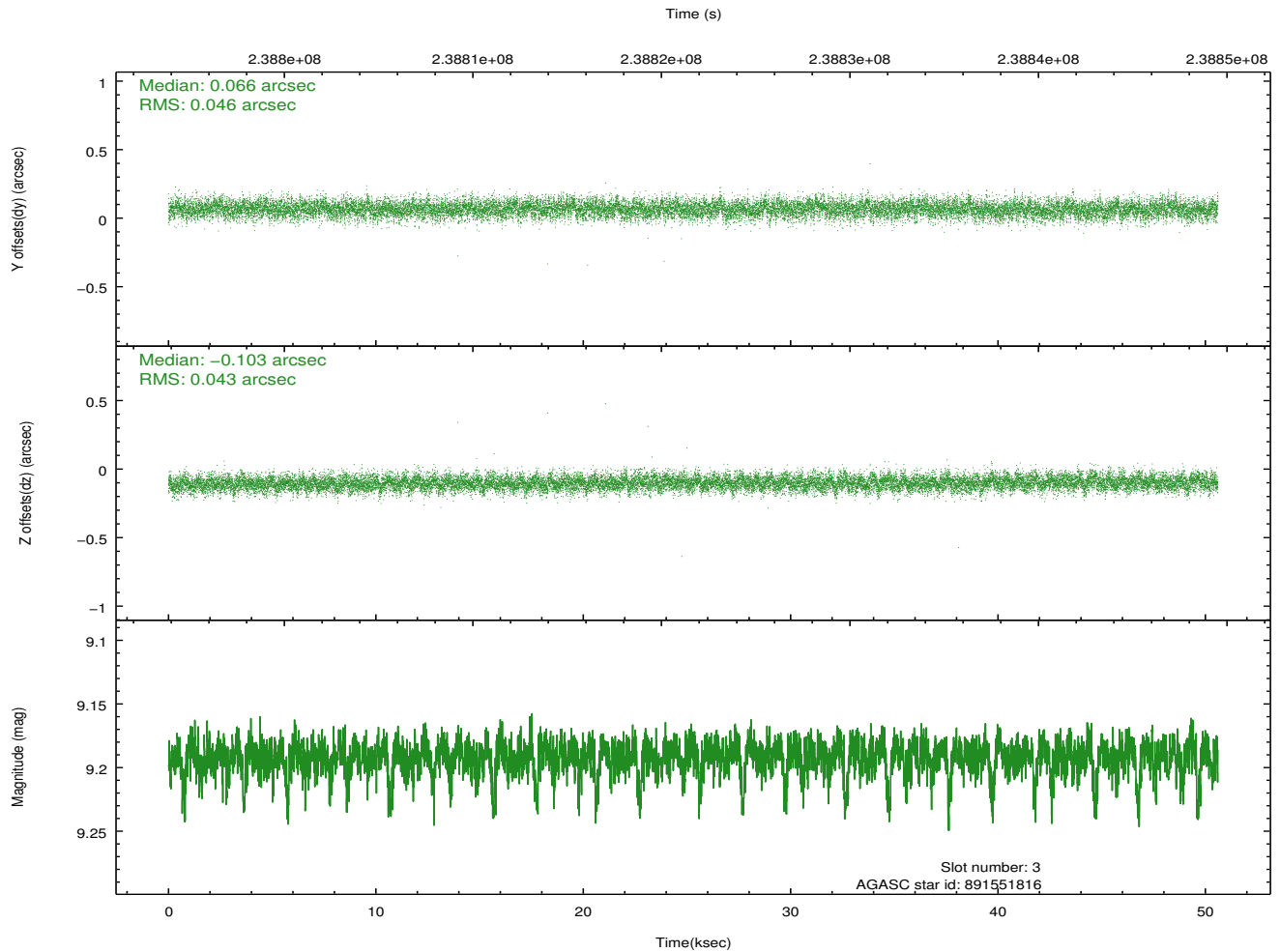
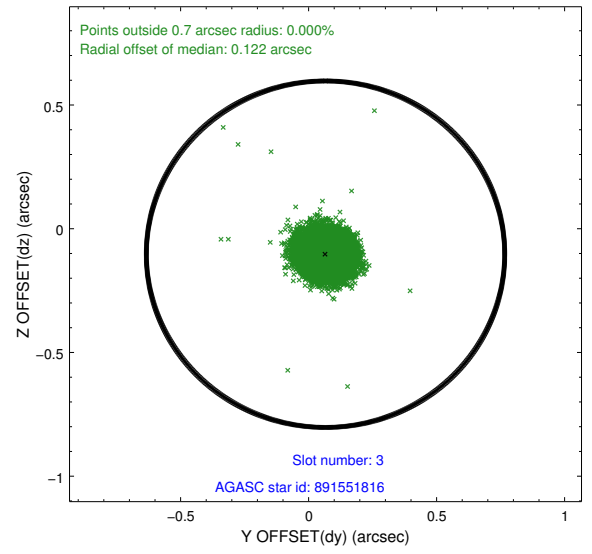
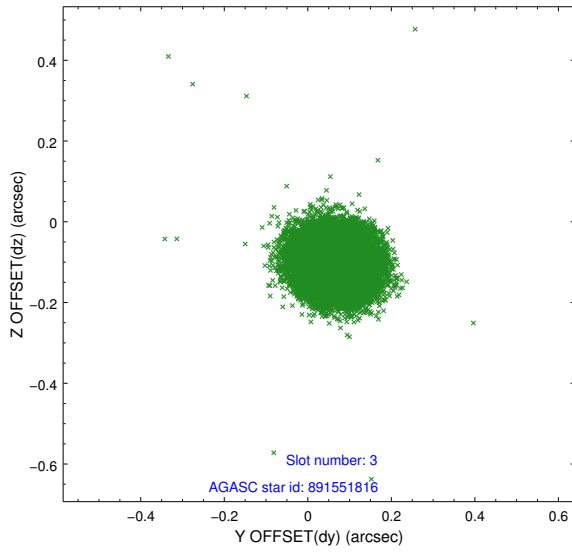
2.3 Aspect

Slot Statistics

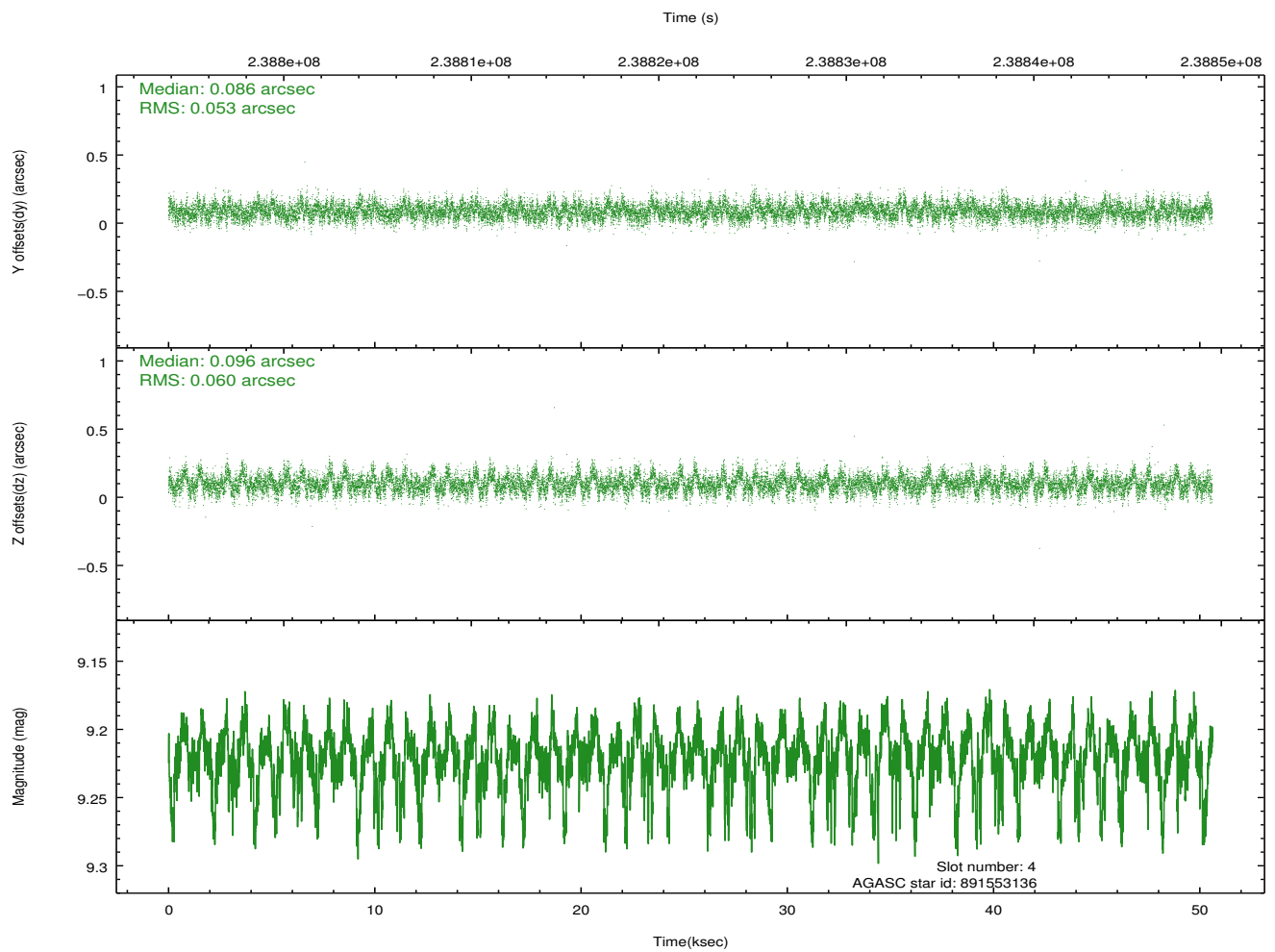
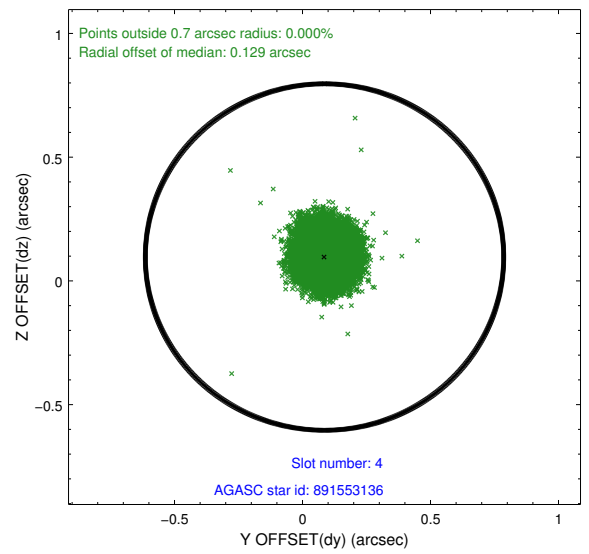
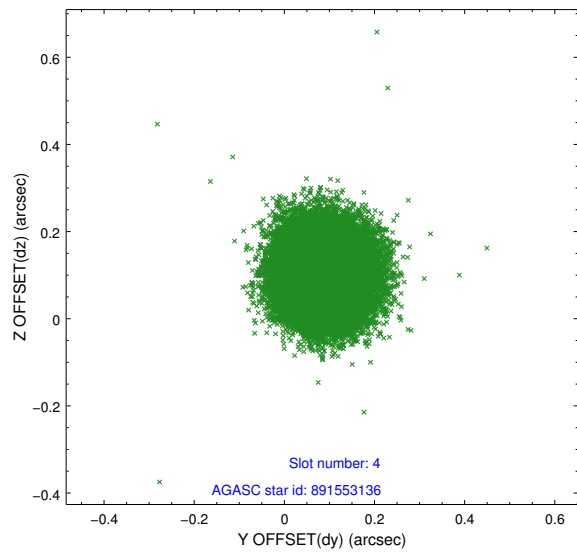
slot	status	id	mag	n_pts	med_dy	med_dz	dr1	dr2	ra	dec	mean_y	mean_z
0	FID	ACIS-S-1	7.19	12342	0.009	-0.029	0.009	0.014	0.000000	0.000000	936.29	-1726.72
1	FID	ACIS-S-4	7.21	12342	0.081	0.020	0.008	0.015	0.000000	0.000000	2153.74	177.52
2	FID	ACIS-S-5	7.23	12342	-0.115	0.021	0.008	0.016	0.000000	0.000000	-1812.75	171.05
3	GUIDE	891551816	9.19	24669	0.066	-0.103	0.066	0.108	246.153106	-27.968763	1596.08	87.61
4	GUIDE	891553136	9.22	24631	0.086	0.096	0.085	0.137	246.454955	-27.819225	973.78	995.59
5	GUIDE	891560800	7.93	24686	-0.037	-0.115	0.061	0.098	246.296971	-27.667531	474.73	445.45
6	GUIDE	891561680	7.80	24681	-0.068	0.002	0.070	0.110	246.126760	-27.151147	-1327.36	-264.72
7	GUIDE	891552176	8.99	24669	-0.049	0.116	0.090	0.143	246.804004	-27.854109	1001.39	2113.91

2.4 Star Slots

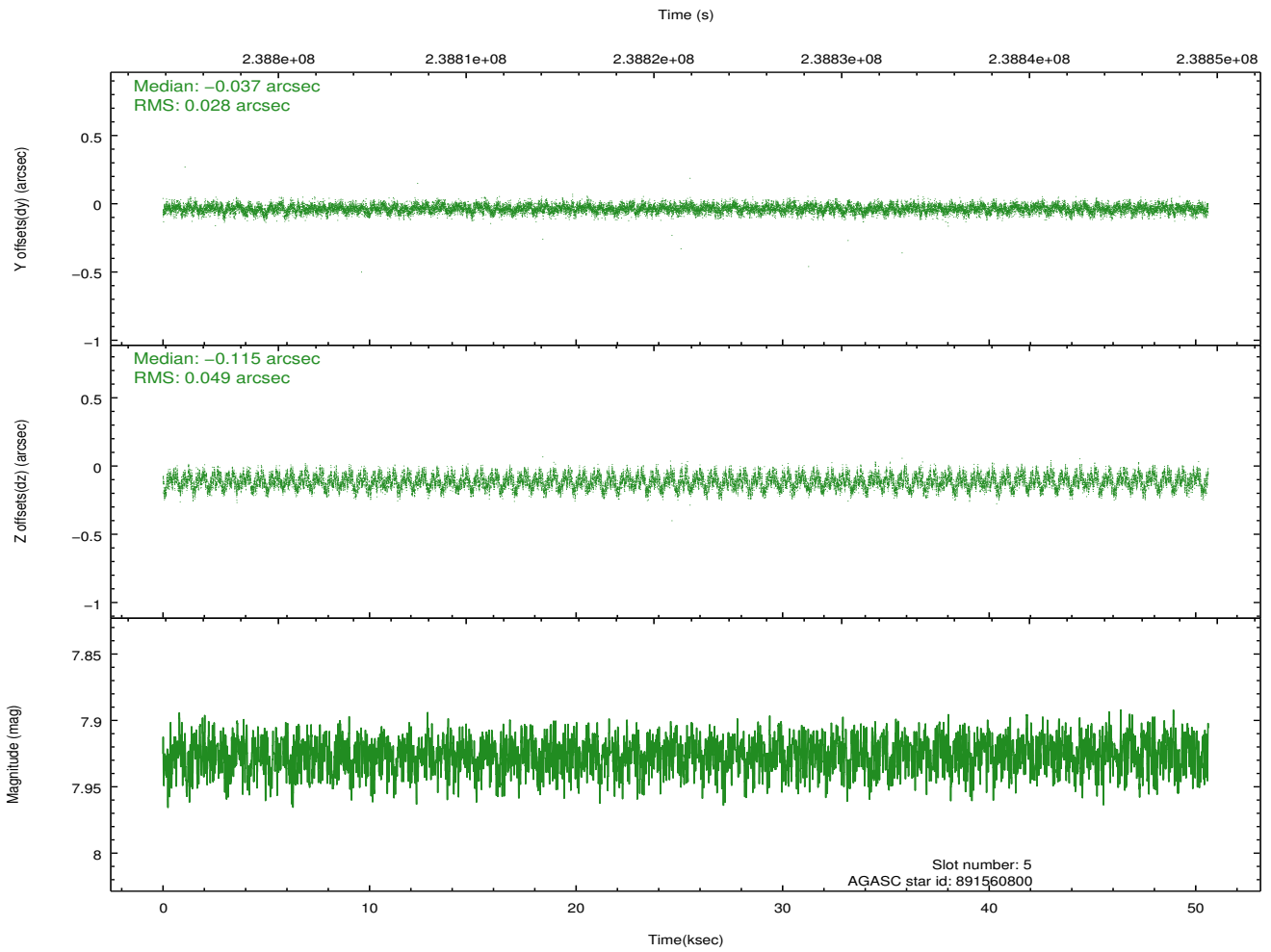
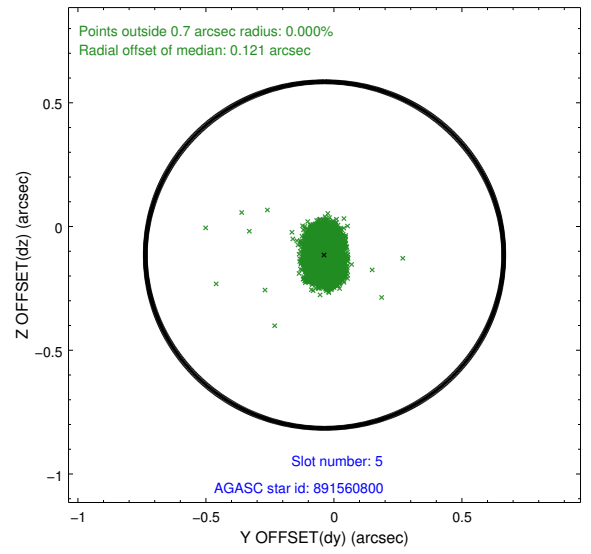
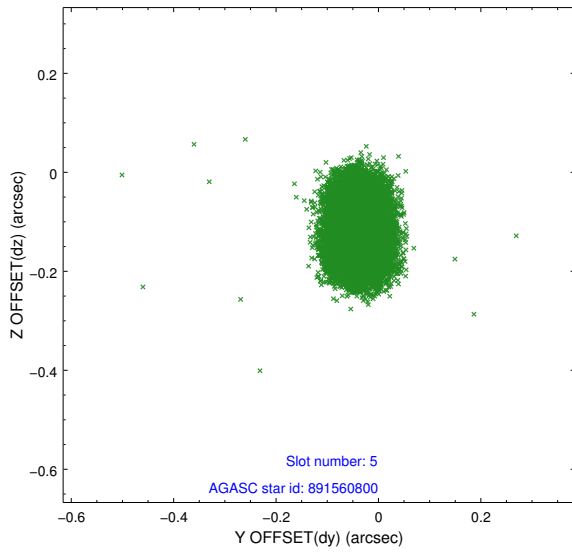
2.4.1 Slot 3



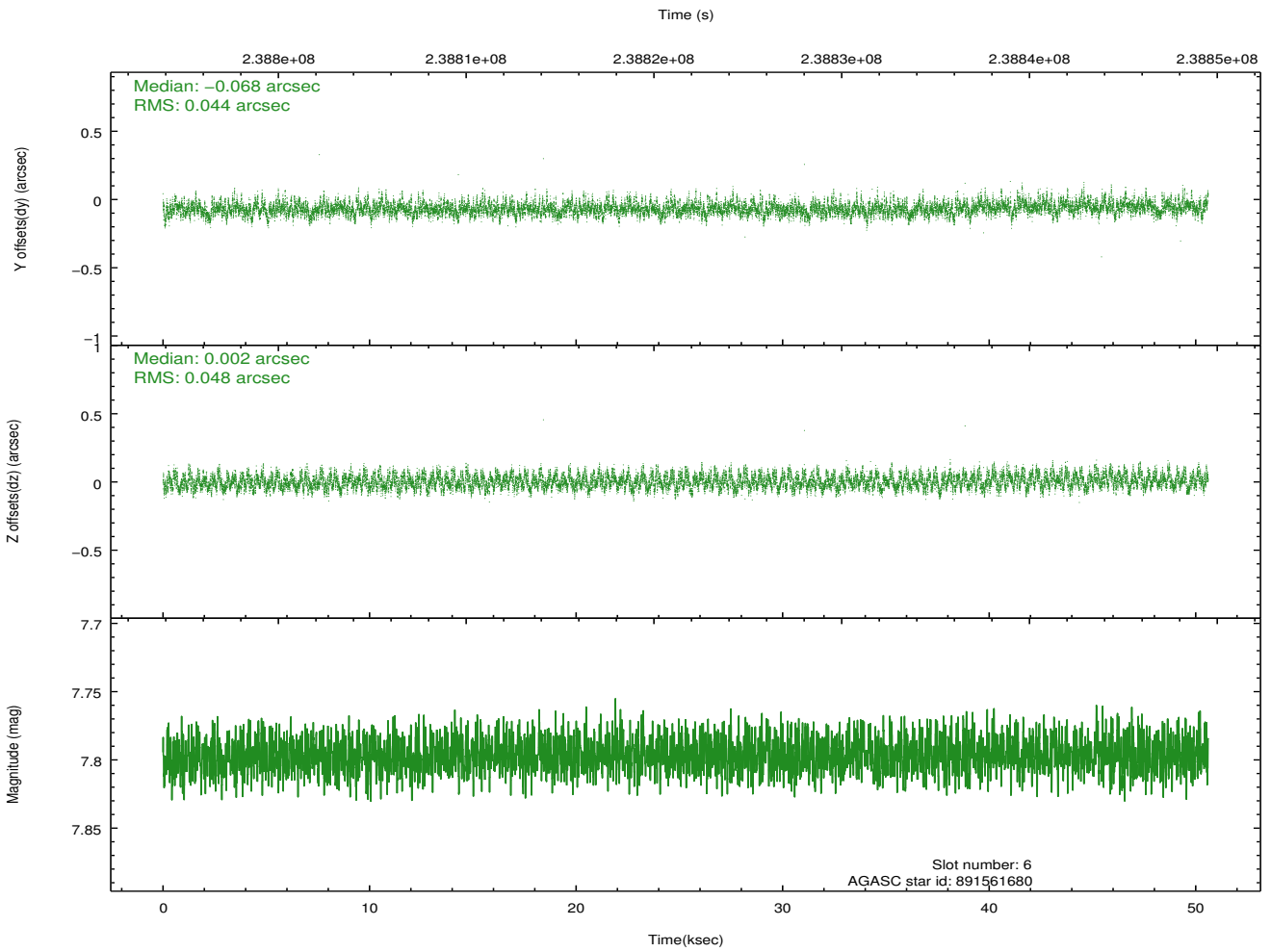
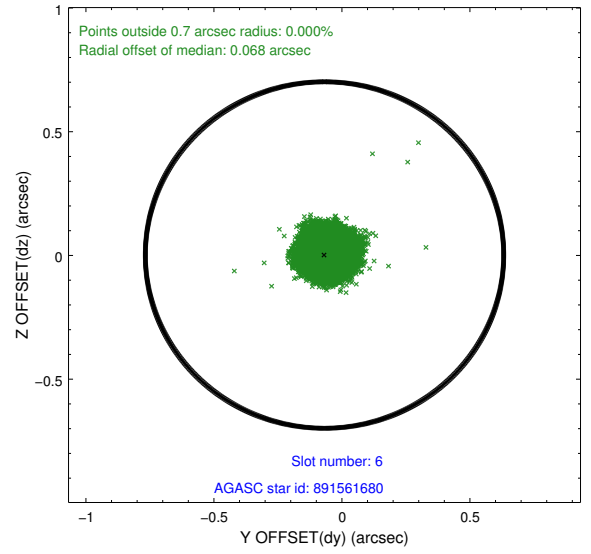
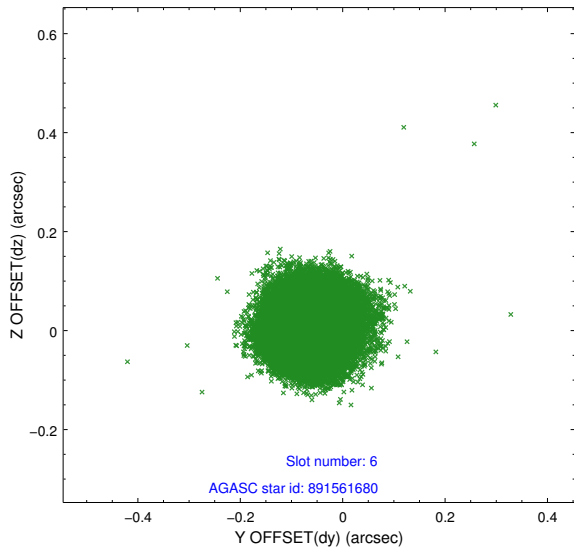
2.4.2 Slot 4



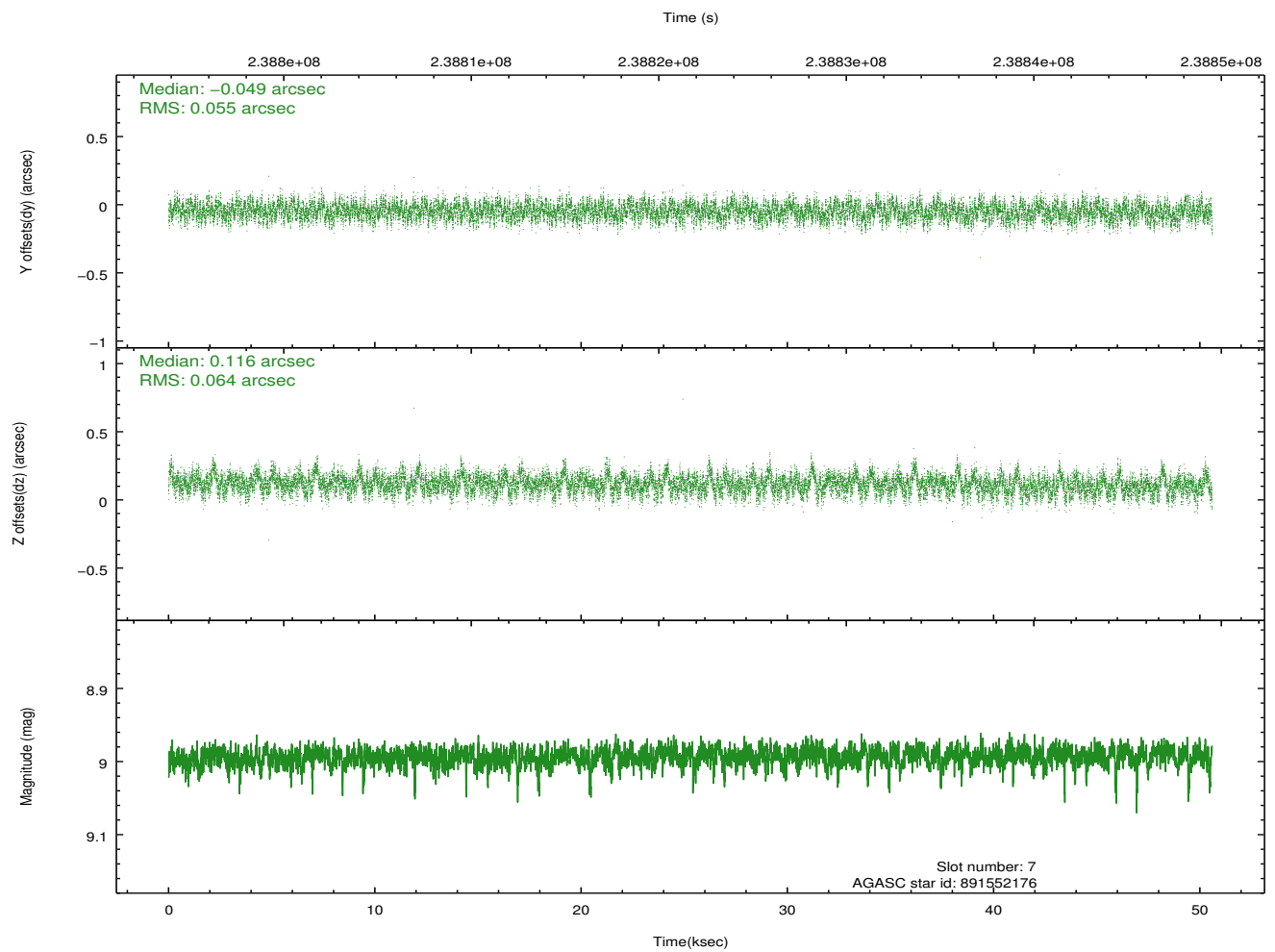
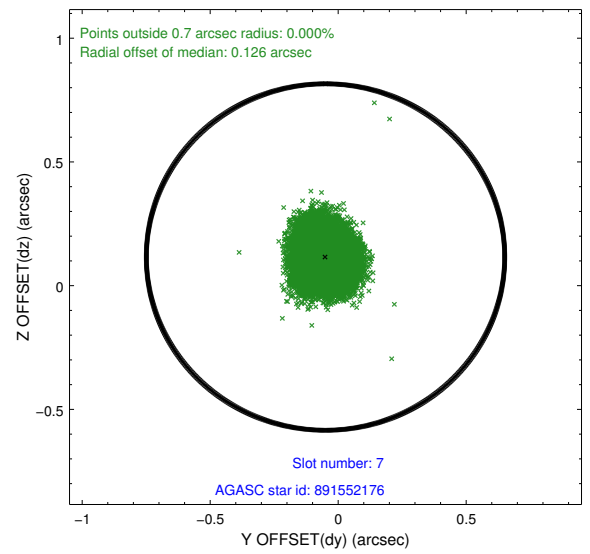
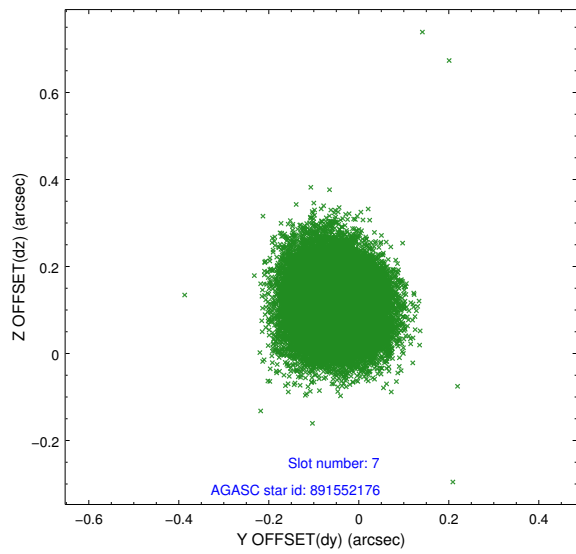
2.4.3 Slot 5



2.4.4 Slot 6

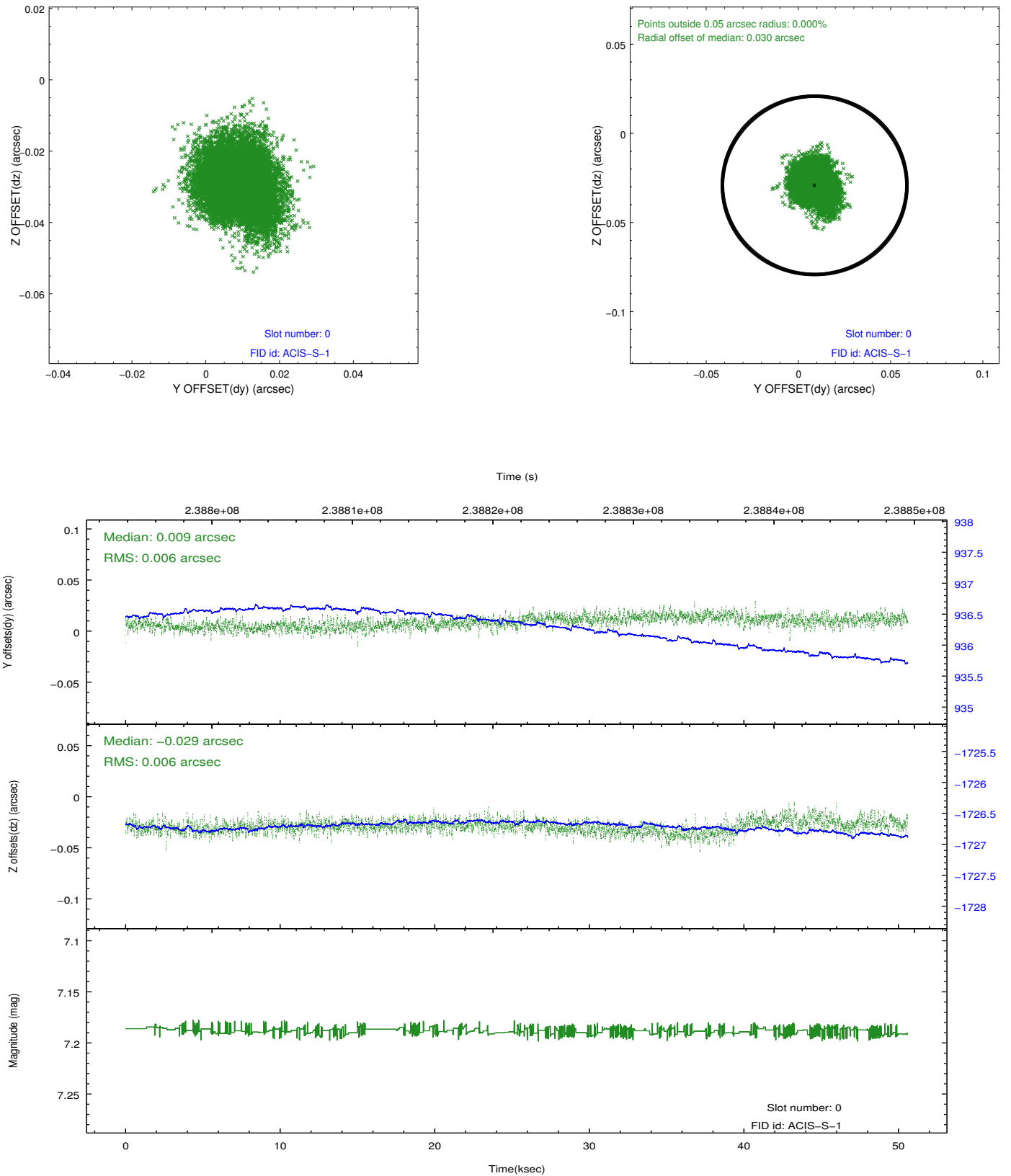


2.4.5 Slot 7

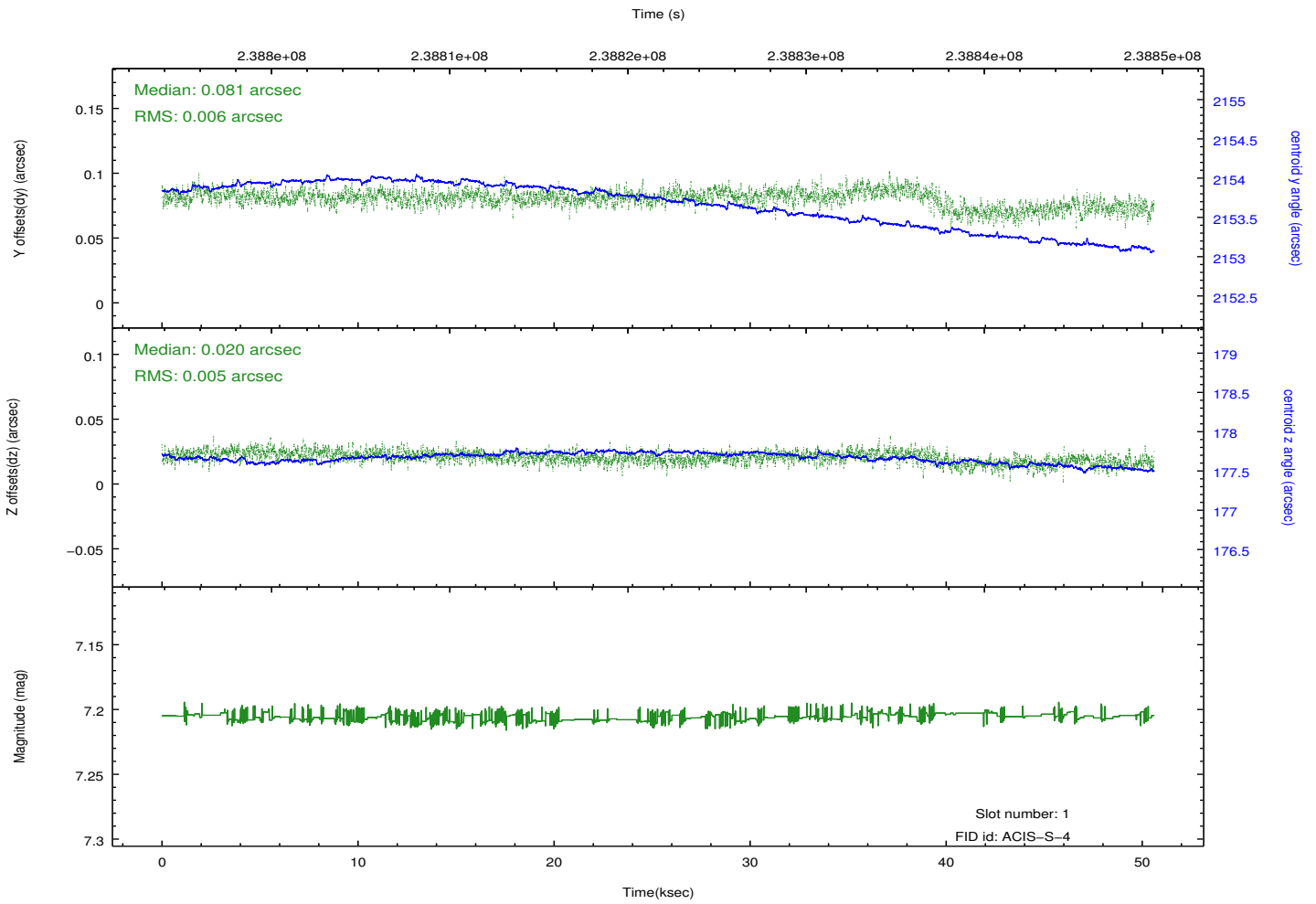
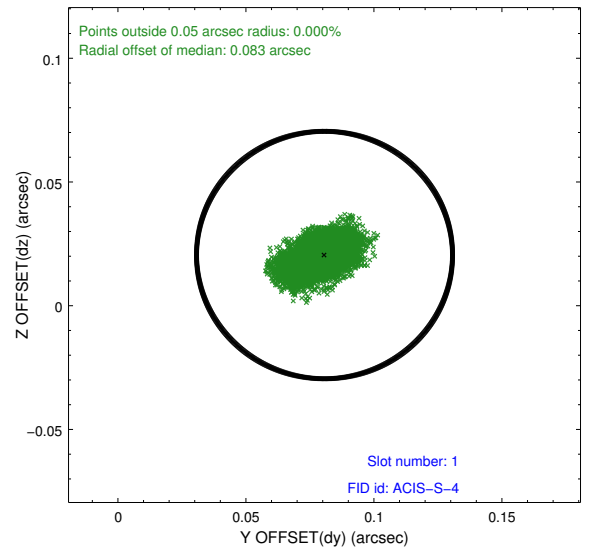
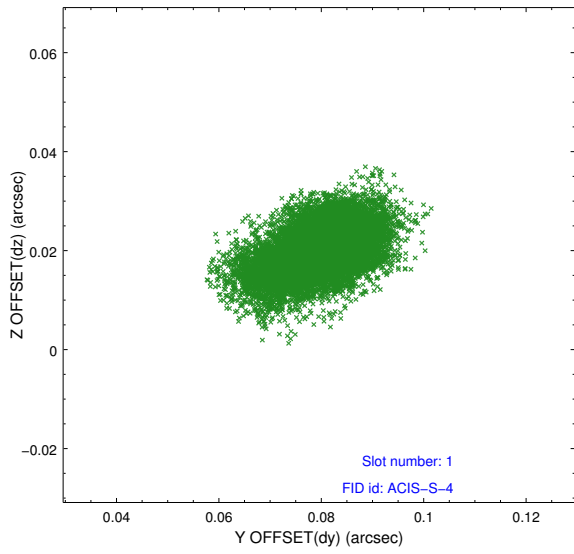


2.5 FID Slots

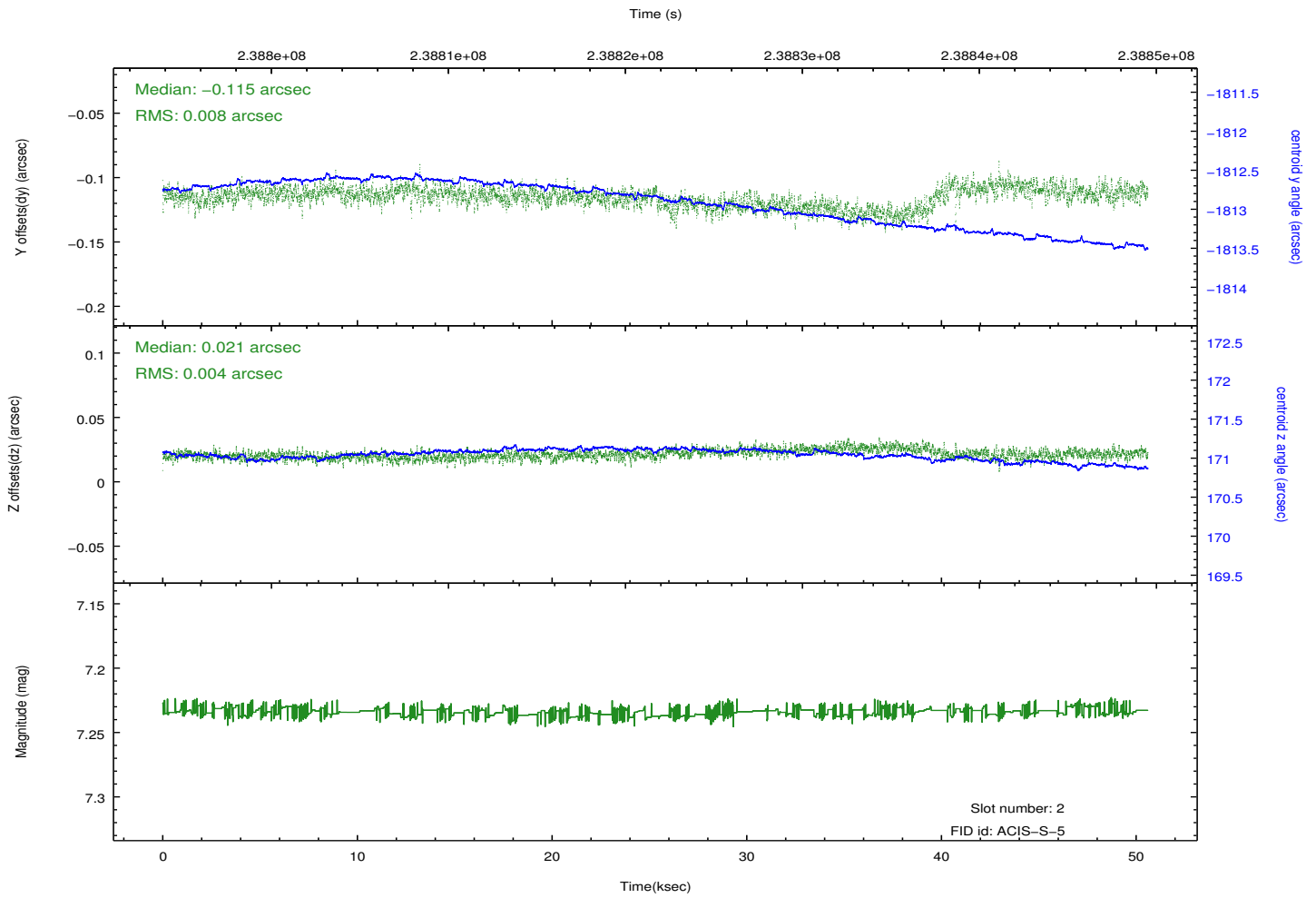
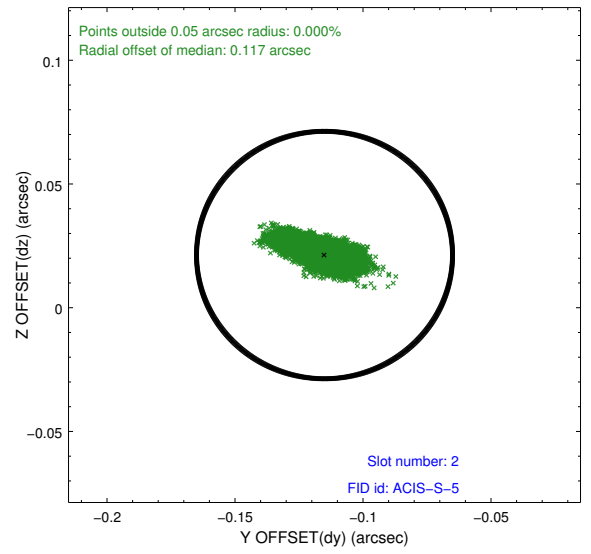
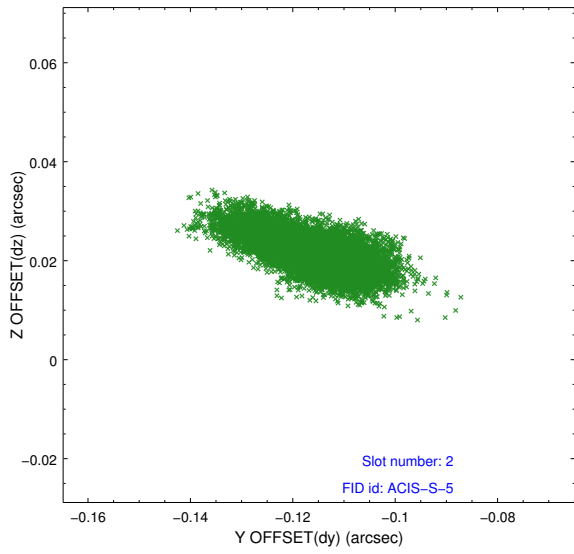
2.5.1 Slot 0



2.5.2 Slot 1



2.5.3 Slot 2



A Summary

A.1 Status

V&V Scientist	Jen Lauer
V&V Date (YYYY-MM-DD)	2013.01.23
V&V Edition	1
V&V Disposition and Status	OK
V&V Charge Time	49.96016

A.2 Comments