

V&V Reference Report

L2 ASCDS Version : 8.4.3.1

Observation 6403 - L2 Version 2
Chandra X-Ray Center

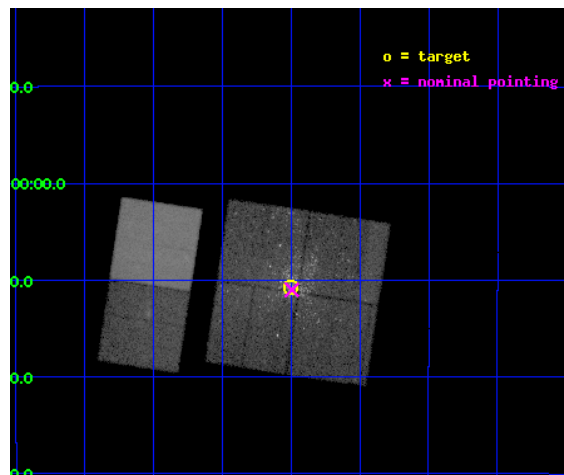
L2 Processing Date : Apr 13 2012

Contents

1	Front	2
2	OBI	3
2.1	OBI	3
2.1.1	Images	3
2.1.2	Bias	3
2.1.3	Parameters	4
2.1.4	Events	4
2.2	Compared Parameters	5
2.3	Aspect	6
2.4	Star Slots	9
2.4.1	Slot 3	9
2.4.2	Slot 4	10
2.4.3	Slot 5	11
2.4.4	Slot 6	12
2.4.5	Slot 7	13
2.5	FID Slots	14
2.5.1	Slot 0	14
2.5.2	Slot 1	15
2.5.3	Slot 2	16
A	Summary	17
A.1	Status	17
A.2	Comments	17

1 Front

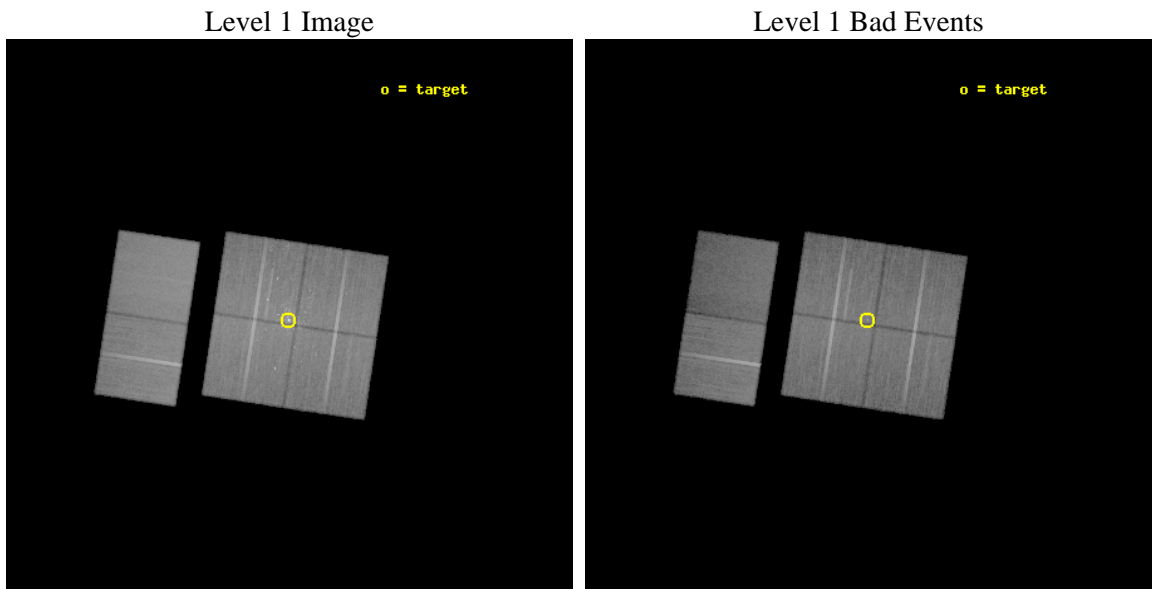
seq_num	200380	Sequence number
obs_id	6403	Observation id
title	A Long Look at M17: Tapping the Treasury of a Nearby Rich Star Forming Region	Proposal title
observer	Professor Gordon Garmire	Principal investigator
object	M17	Source name
dtcycle	0	
cycle	P	events from which exps? Prim/Second/Both
ra_targ	275.124583	Observer's specified target RA [deg]
dec_targ	-16.179139	Observer's specified target Dec [deg]
ra_nom	275.12339221694	Nominal RA [deg]
dec_nom	-16.183650668641	Nominal Dec [deg]
roll_nom	278.60835758691	Nominal Roll [deg]
revision	2	Processing version of data
ontime	35161.517928481	Sum of GTIs [s]
livetime	34716.281616746	Livetime [s]
ontime0	35167.999869049	Sum of GTIs [s]
ontime1	35167.999869049	Sum of GTIs [s]
ontime2	35158.277057767	Sum of GTIs [s]
ontime3	35161.517928481	Sum of GTIs [s]
ontime6	35164.758868814	Sum of GTIs [s]
ontime7	35167.999869049	Sum of GTIs [s]
l2events	316104	Number of level 2 events



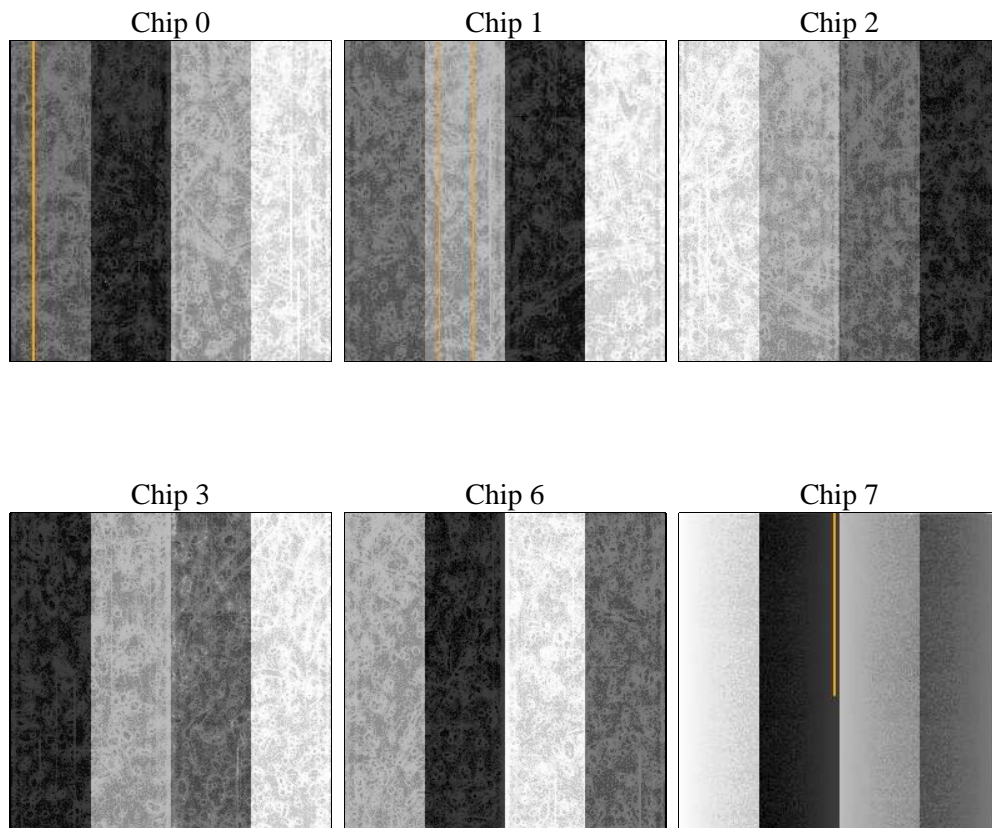
2 OBI

2.1 OBI

2.1.1 Images



2.1.2 Bias



2.1.3 Parameters

obi_num	1	Obi number	sched_exp_time	35000.000000	[s] Scheduled observation exposure time
ascdsver	8.4.3.1	Processing system revision	ontime	35161.517928481	Sum of GTIs [s]
caldbver	4.4.9	 	ontime0	35167.999869049	Sum of GTIs [s]
date	2012-04-13T01:06:51	Date and time of file creation	ontime1	35167.999869049	Sum of GTIs [s]
revision	2	Processing version of data	ontime2	35158.277057767	Sum of GTIs [s]
			ontime3	35161.517928481	Sum of GTIs [s]
			ontime6	35164.758868814	Sum of GTIs [s]
			ontime7	35167.999869049	Sum of GTIs [s]
			l1events	1733717	Number of level 1 events

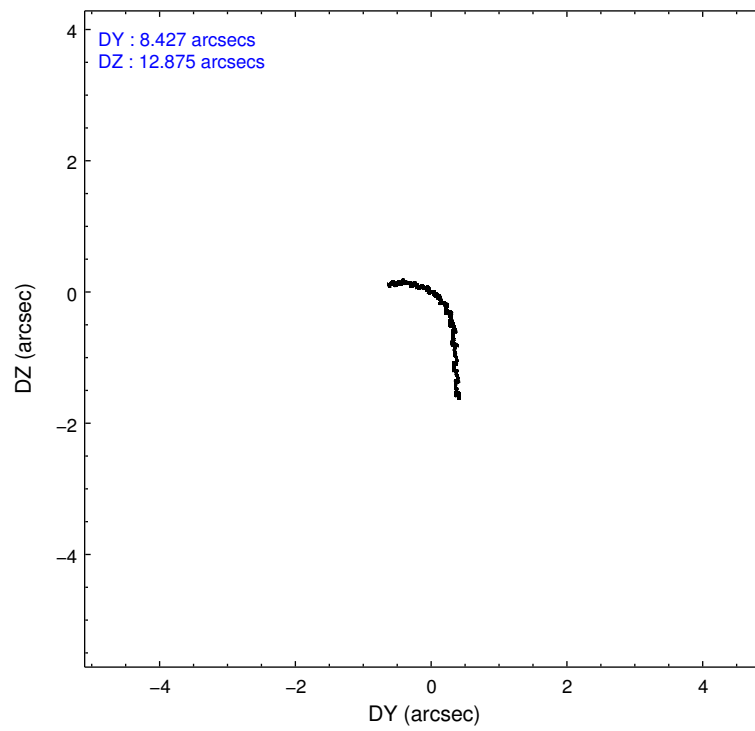
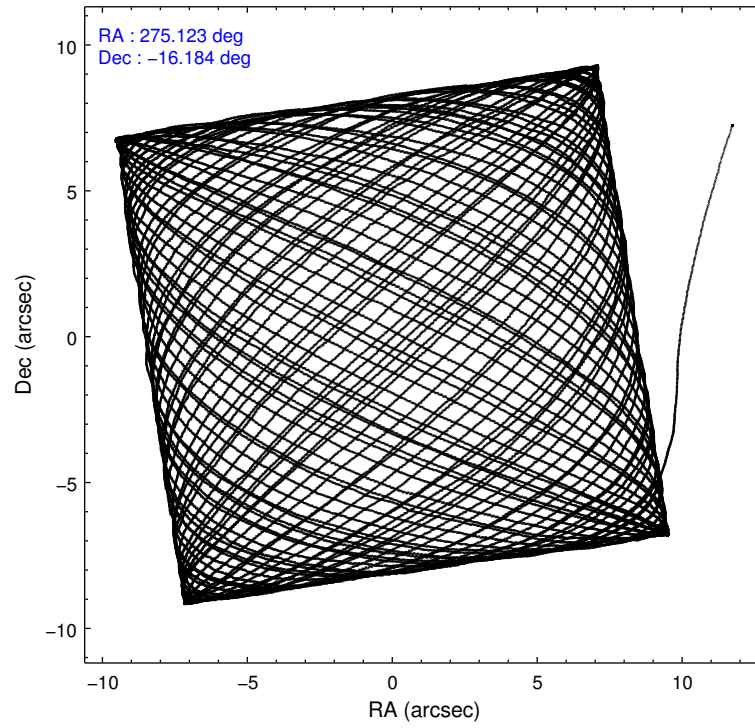
2.1.4 Events

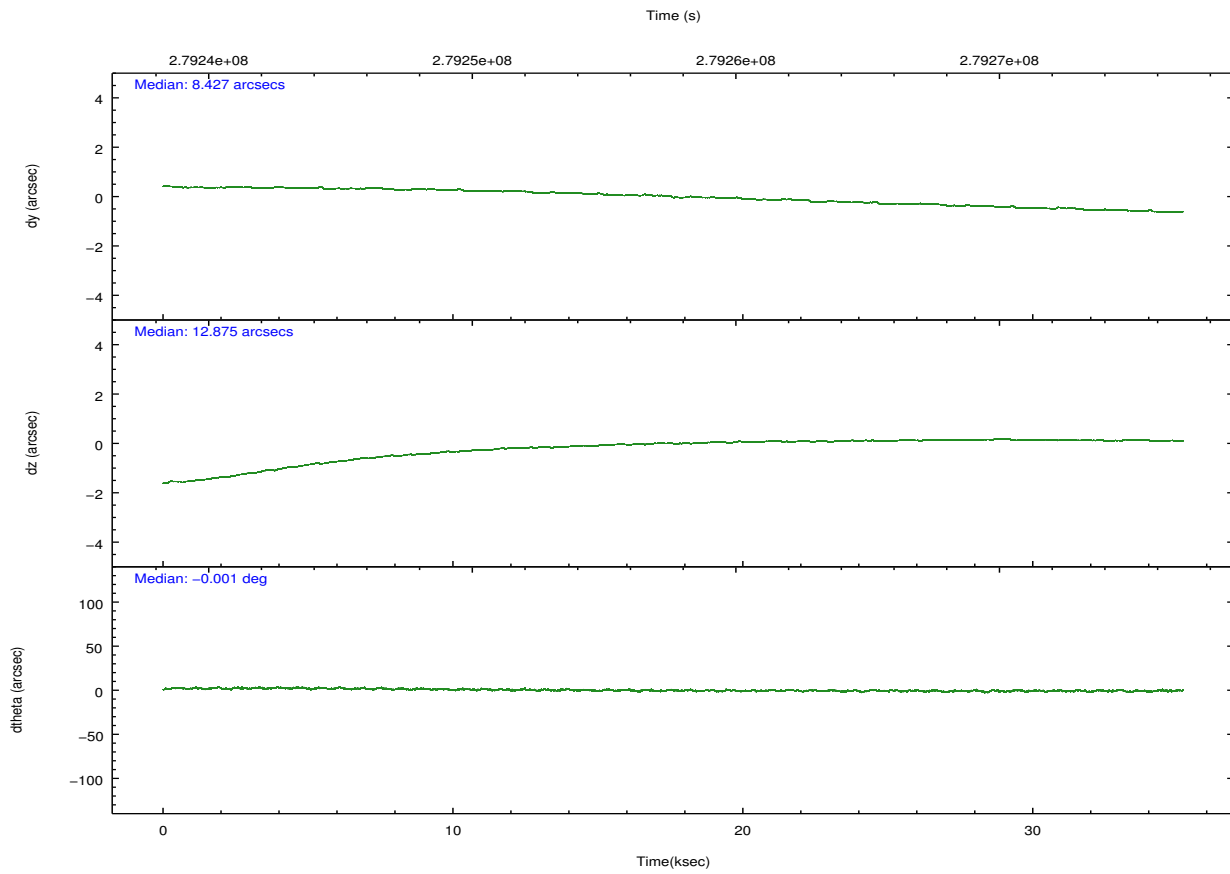
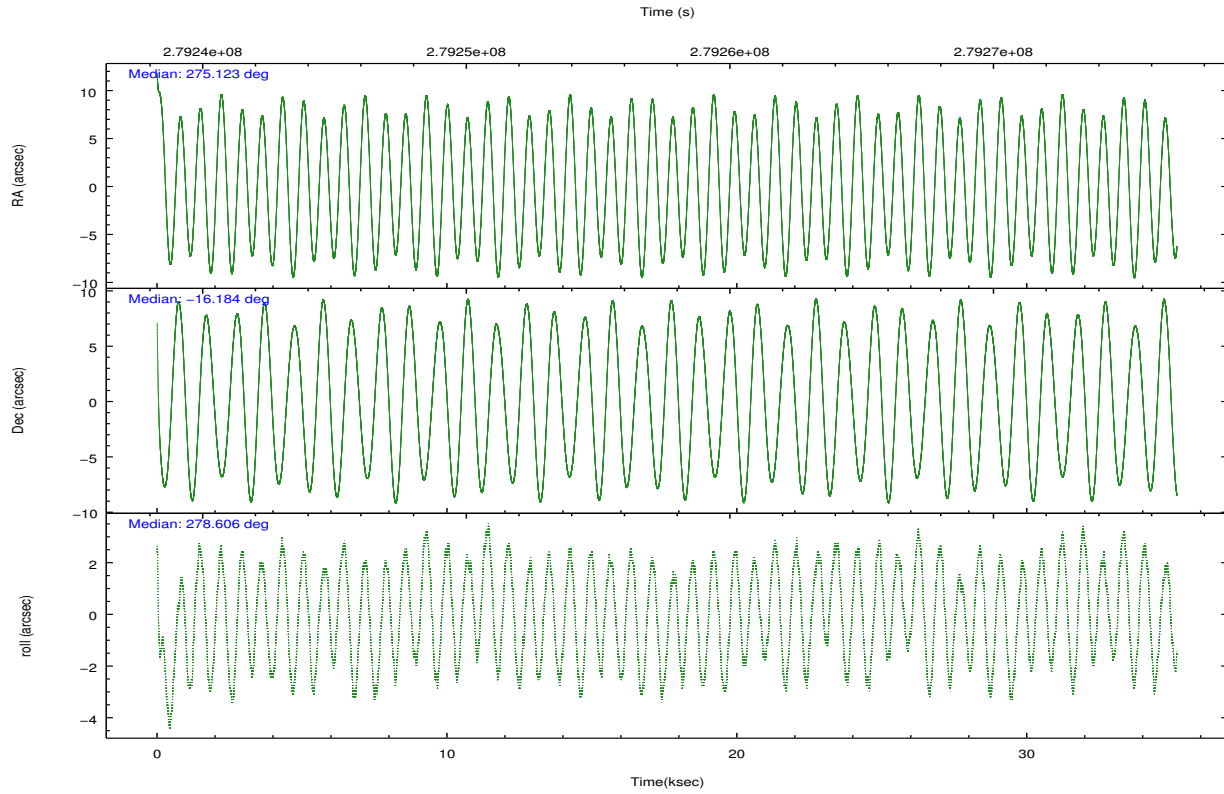
	ccd 0	ccd 1	ccd 2	ccd 3	ccd 6	ccd 7		ccd 0	ccd 1	ccd 2	ccd 3	ccd 6	ccd 7
level 1 events	264324	263318	297555	298188	294596	315736	grade 0 events	13262	17844	18639	30220	16696	16976
rejected events	232851	224511	260571	245770	258602	165648		5%	6%	6%	10%	5%	5%
rejected %	88%	85%	87%	82%	87%	52%	grade 1 events	159	152	228	491	153	371
								0%	0%	0%	0%	0%	0%
							grade 2 events	6929	7734	7290	8477	6846	31379
								2%	2%	2%	2%	2%	9%
							grade 3 events	3236	3643	3136	3940	3258	14408
								1%	1%	1%	1%	1%	4%
							grade 4 events	2942	3535	3134	3936	3252	14214
								1%	1%	1%	1%	1%	4%
							grade 5 events	9029	10437	8697	11005	11086	32334
								3%	3%	2%	3%	3%	10%
							grade 6 events	5336	6349	5052	6111	6215	74191
								2%	2%	1%	2%	2%	23%
							grade 7 events	223431	213624	251379	234008	247090	131863
								84%	81%	84%	78%	83%	41%

2.2 Compared Parameters

Parameter	Planned	Actual	Parameter	Planned	Actual
Instrument	ACIS	ACIS	Obspar format version number	7	7
Detector	ACIS-012367	ACIS-012367	Obspar file type	PREDICTED	ACTUAL
Grating	NONE	NONE	Obspar update status	NONE	UPDATED
Data mode	VFAINT	VFAINT	Number of optional ACIS chips dropped	0	0
Observation mode	POINTING	POINTING	On-chip summing requested	N	N
[deg] Pointing RA	275.105505	275.1233922169413	Subarray requested	NONE	NONE
[deg] Pointing Dec	-16.162308	-16.18365066864127	Alternating exposures requested	N	N
[deg] Pointing Roll	278.394691	278.6083575869125	[s] Primary exposure time	0.000000	3.2
[mm] SIM focus pos	-0.782348	-0.7809083437167272			
[mm] SIM defocus	0	0.001439871863259334			
[mm] SIM translation stage pos	-233.592463	-233.5874344608287			
[mm] SIM translation stage offset	0	-0.005018542100998502			
[s] Observation start time (MET)	279240212.184000	279238957.24265			
Observation start date	2006-11-06T22:42:27	2006-11-06T22:22:37			
[s] Observation end time (MET)	279275212.184000	279276117.59441			
Observation end date	2006-11-07T08:25:47	2006-11-07T08:41:57			
Read mode	TIMED	TIMED			

2.3 Aspect



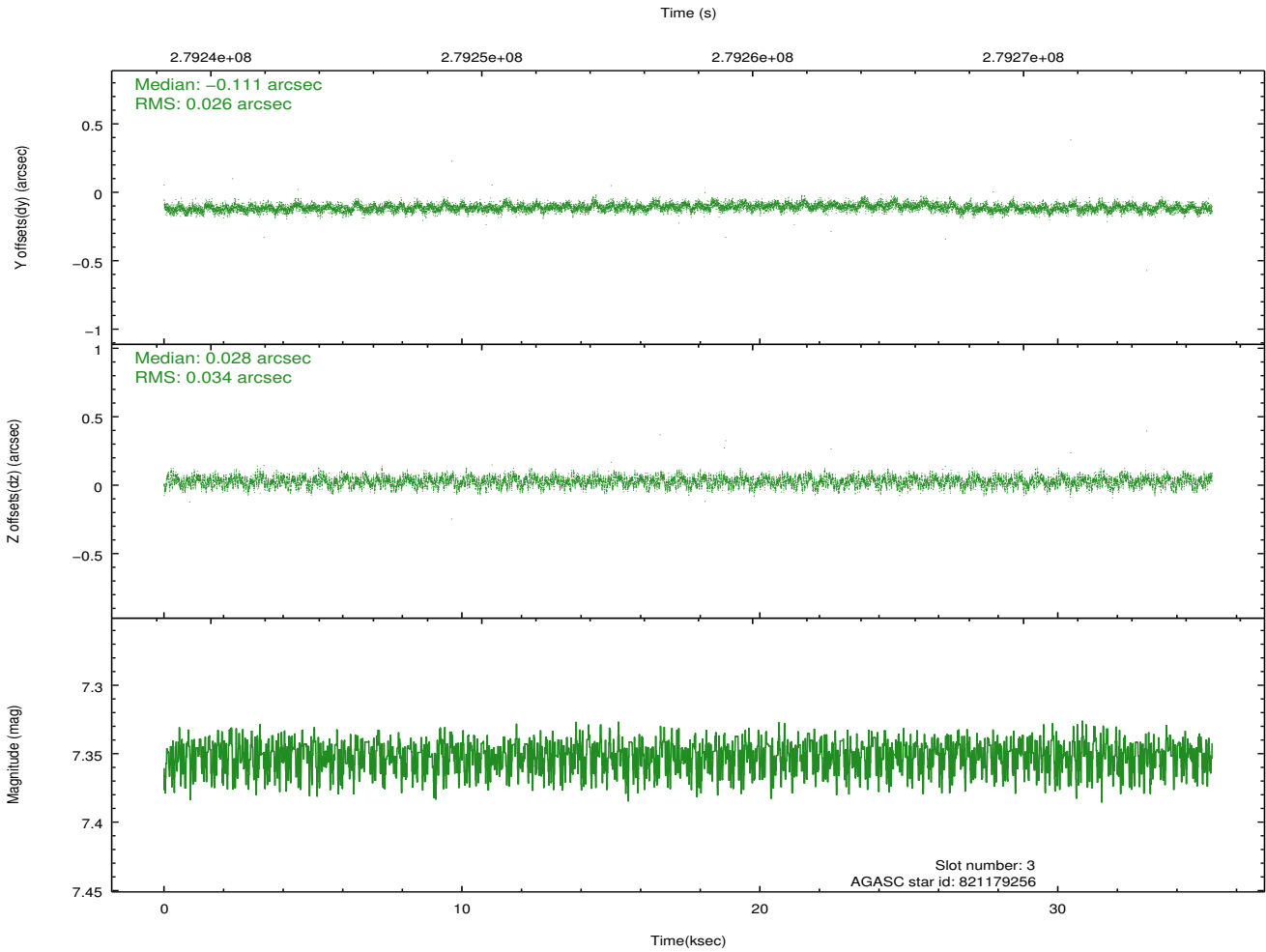
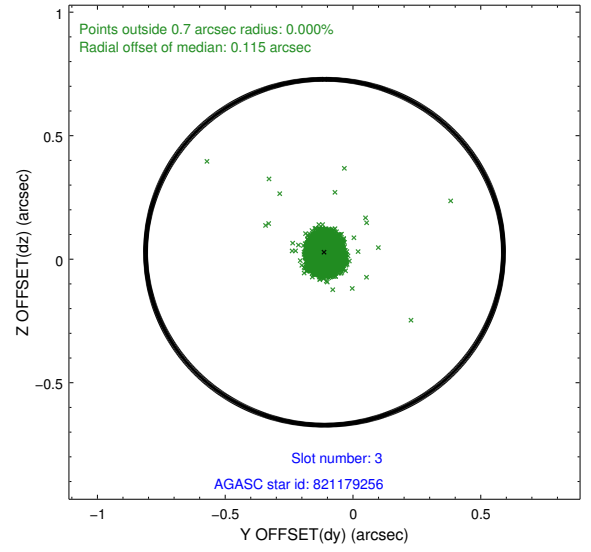
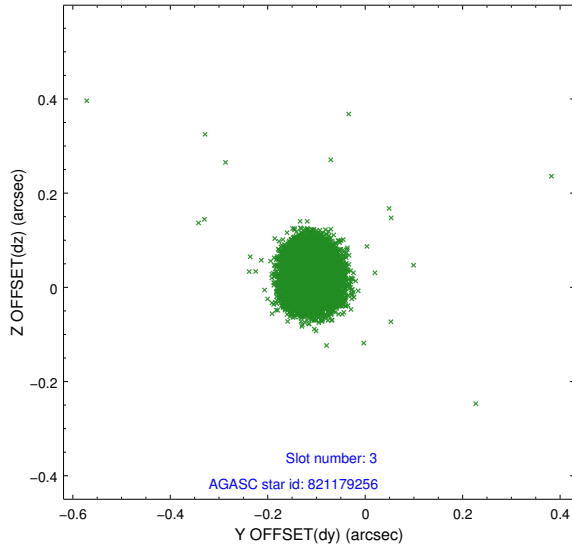


Slot Statistics

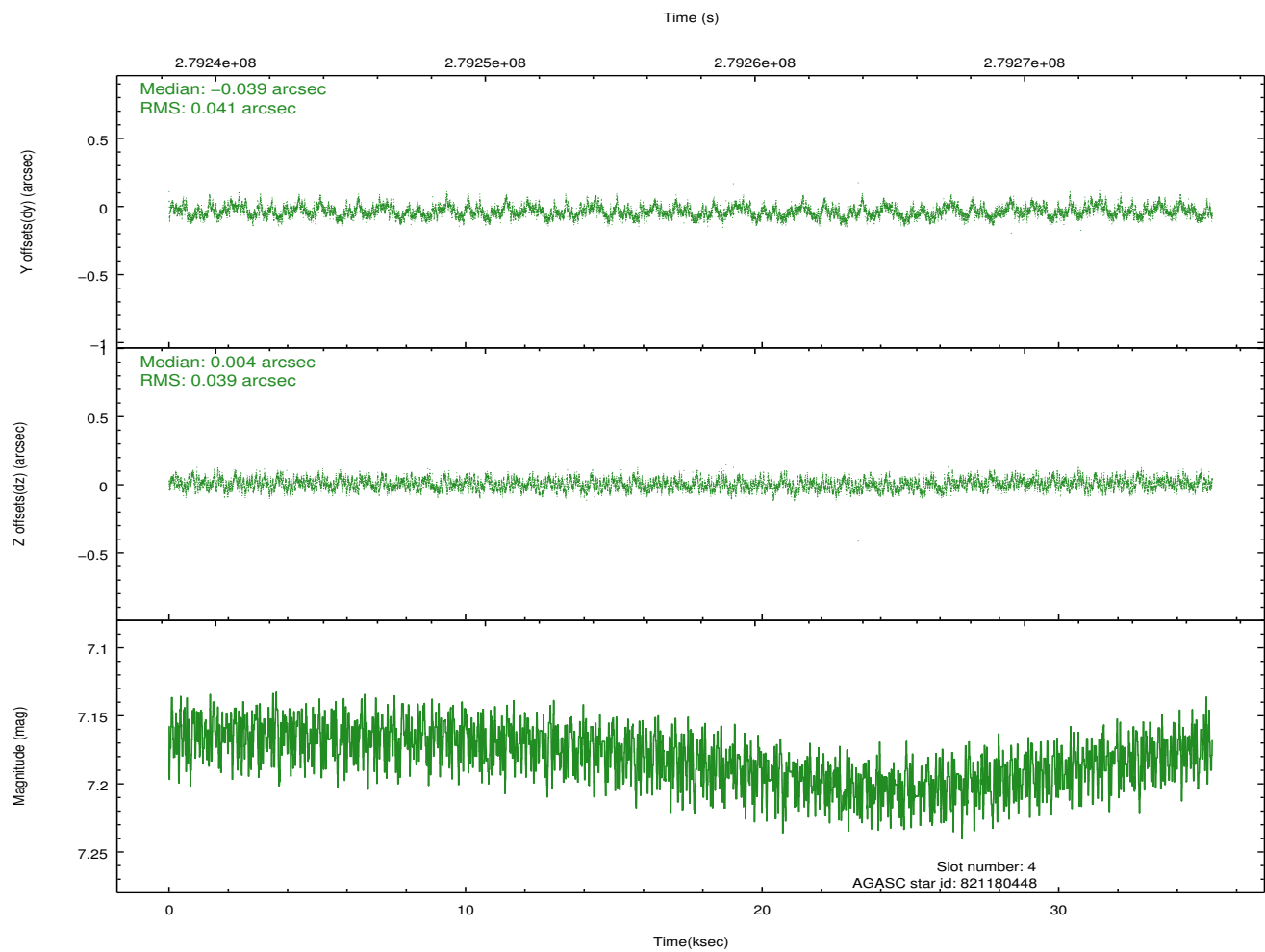
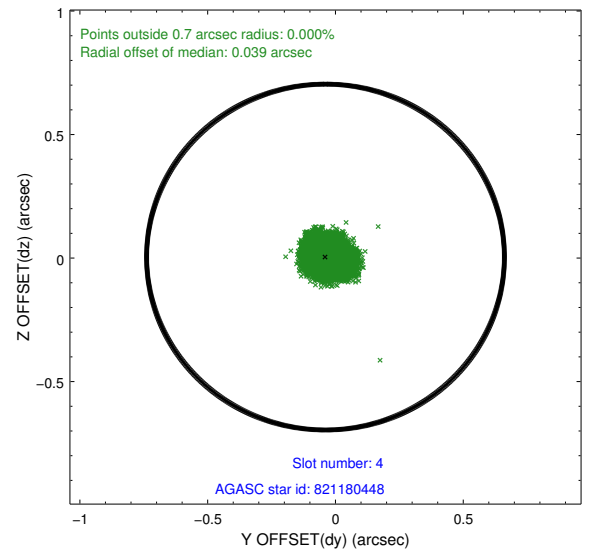
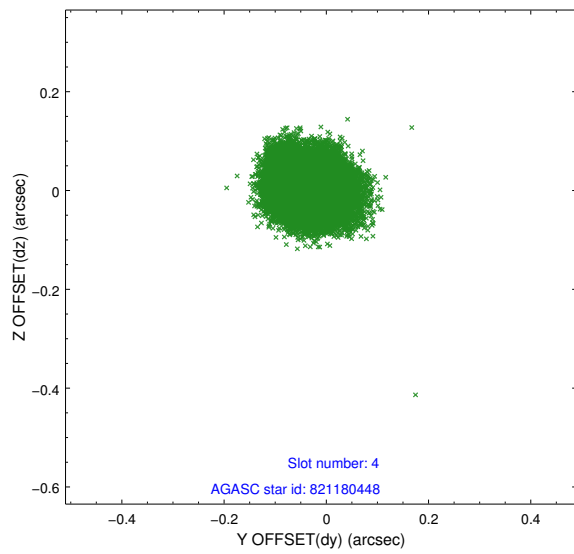
slot	status	id	mag	n_pts	med_dy	med_dz	dr1	dr2	ra	dec	mean_y	mean_z
0	FID	ACIS-I-1	7.24	8580	0.048	-0.011	0.023	0.051	0.000000	0.000000	931.29	-836.20
1	FID	ACIS-I-5	7.23	8579	-0.193	0.059	0.021	0.032	0.000000	0.000000	-1817.03	1061.37
2	FID	ACIS-I-6	7.24	8580	0.054	0.024	0.015	0.041	0.000000	0.000000	396.82	1705.87
3	GUIDE	821179256	7.35	17159	-0.111	0.028	0.044	0.073	274.840900	-15.612800	-2090.15	-618.85
4	GUIDE	821180448	7.18	17158	-0.039	0.004	0.061	0.095	275.453560	-16.324585	754.64	1104.31
5	GUIDE	821168248	8.91	17149	-0.166	-0.146	0.085	0.133	274.322211	-15.621827	-2316.08	-2403.47
6	GUIDE	821181816	8.43	17149	0.155	-0.029	0.061	0.096	274.847938	-16.750455	1966.01	-1187.58
7	GUIDE	821183768	9.24	17148	0.161	0.145	0.079	0.128	275.638665	-16.595886	1815.66	1591.83

2.4 Star Slots

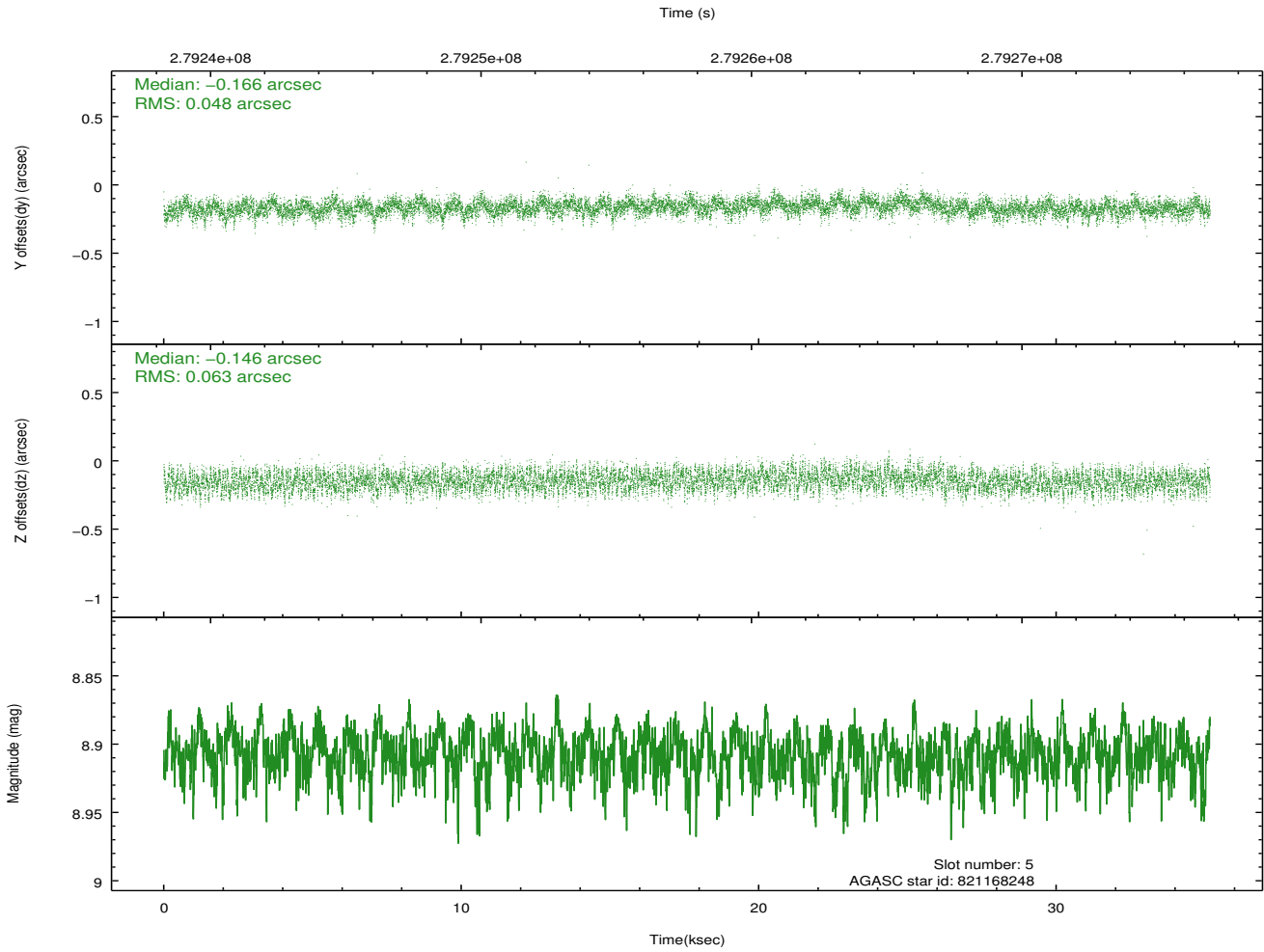
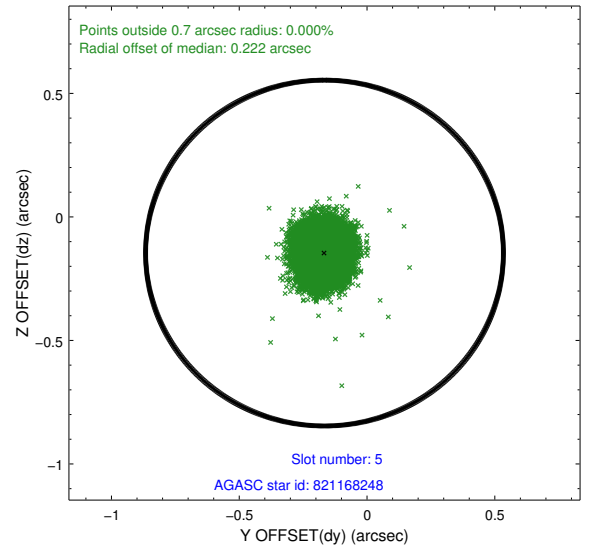
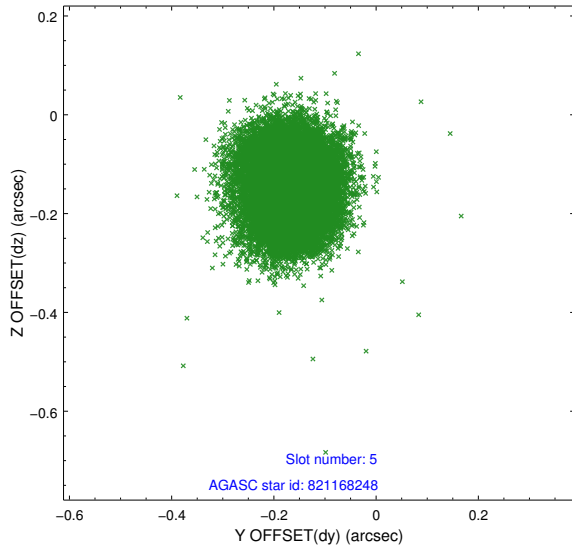
2.4.1 Slot 3



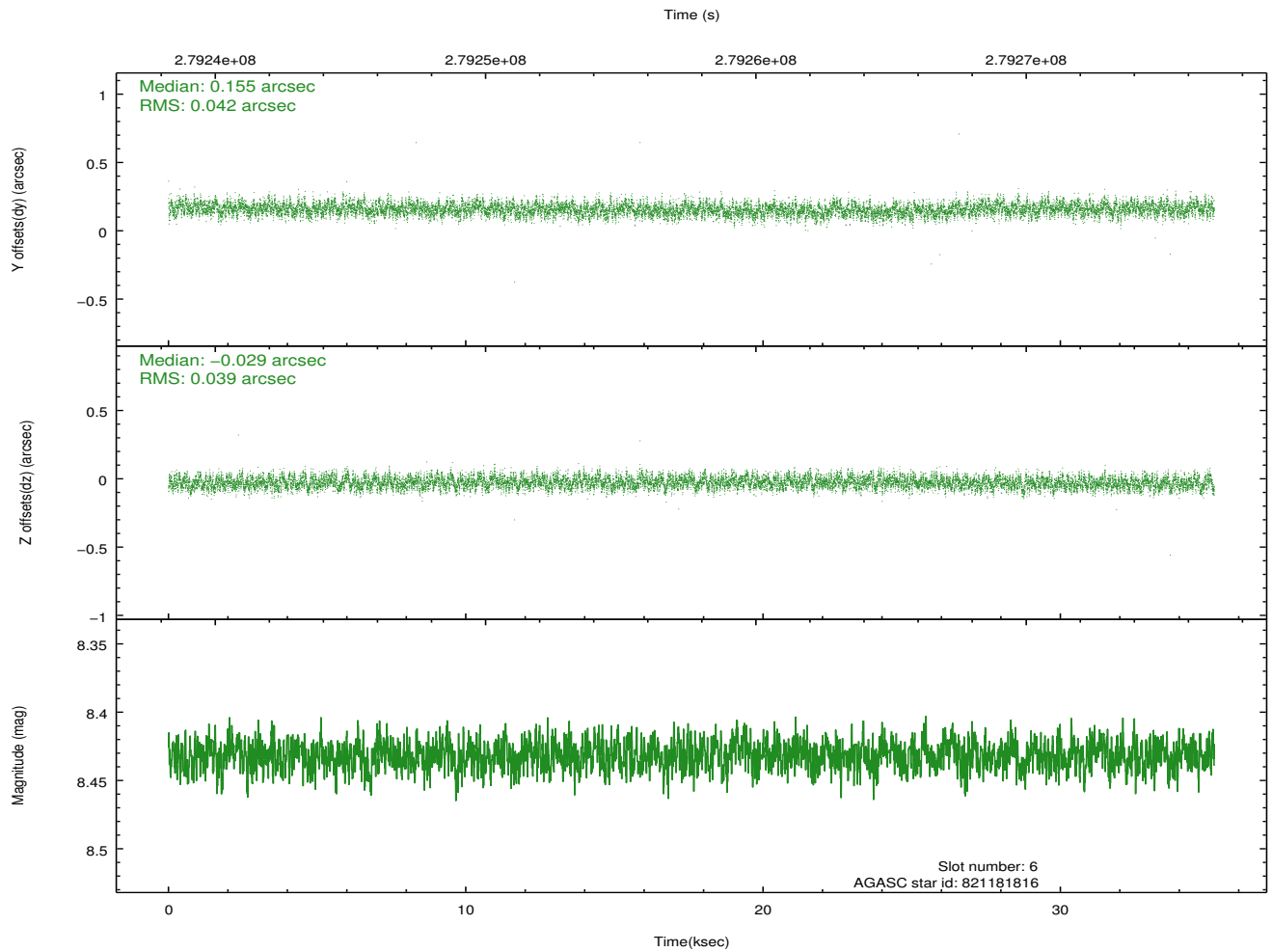
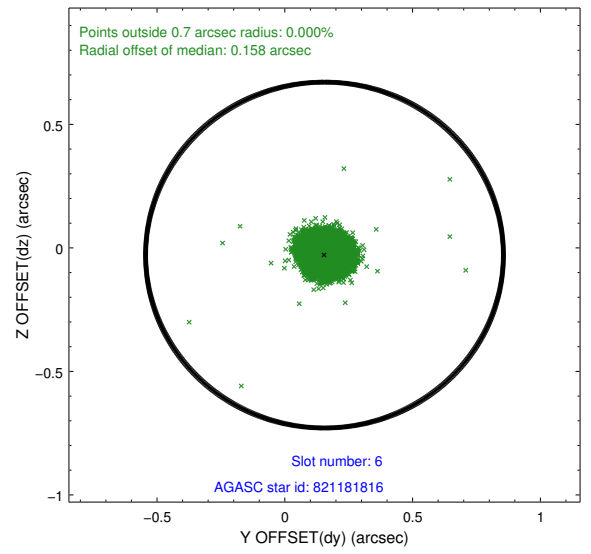
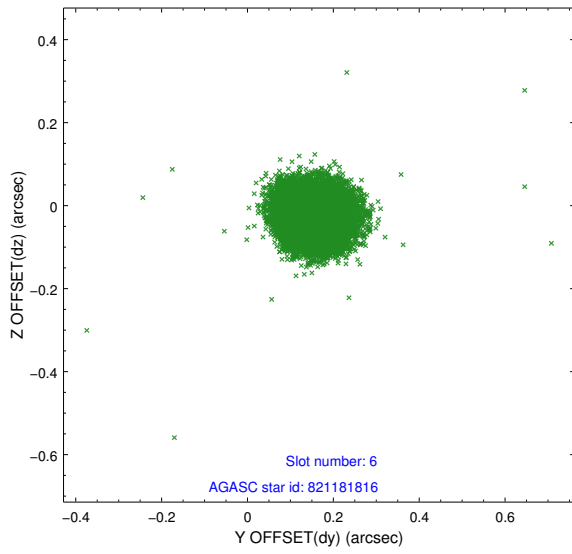
2.4.2 Slot 4



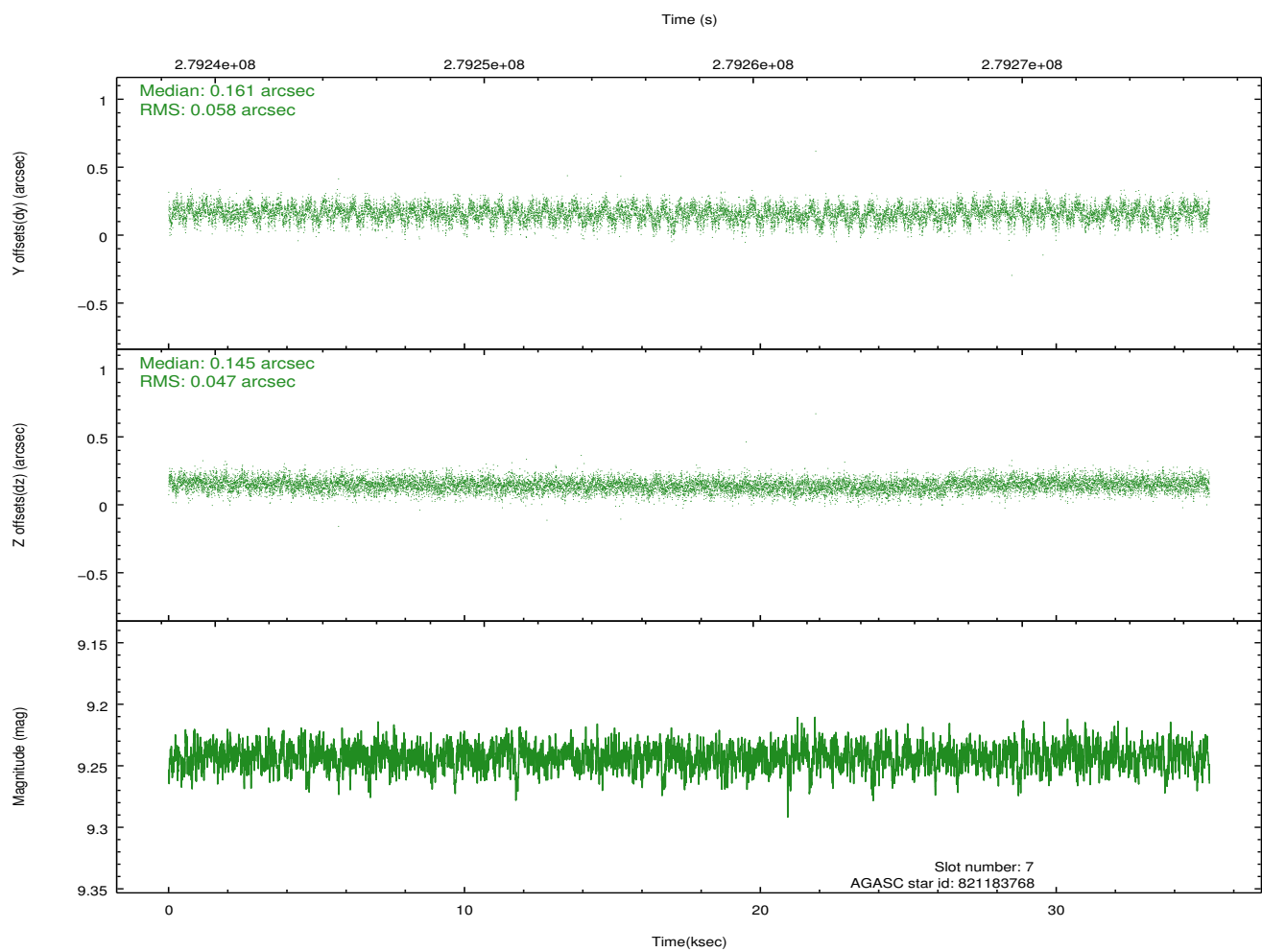
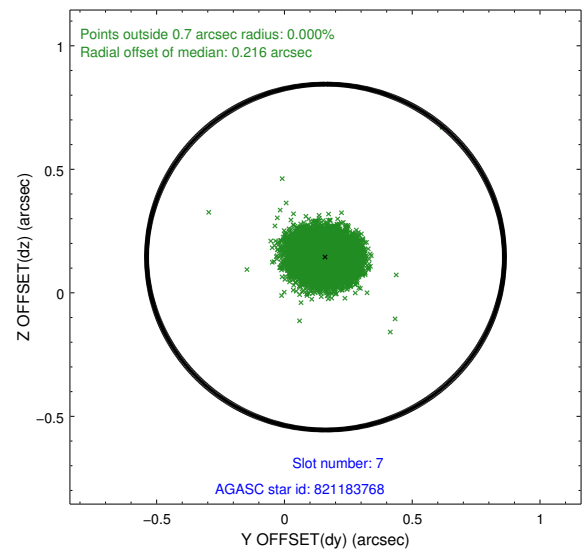
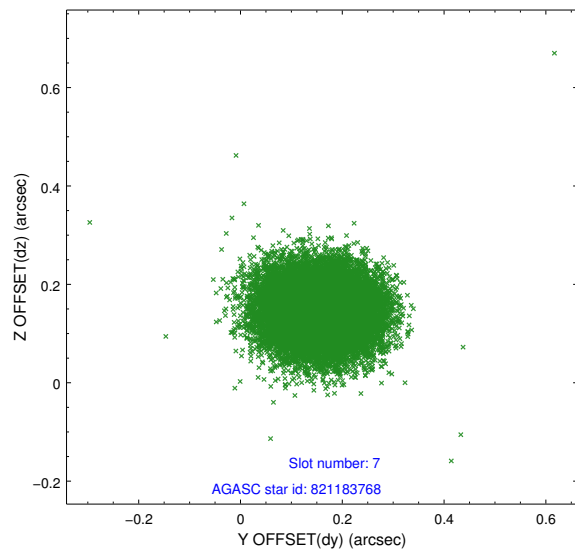
2.4.3 Slot 5



2.4.4 Slot 6

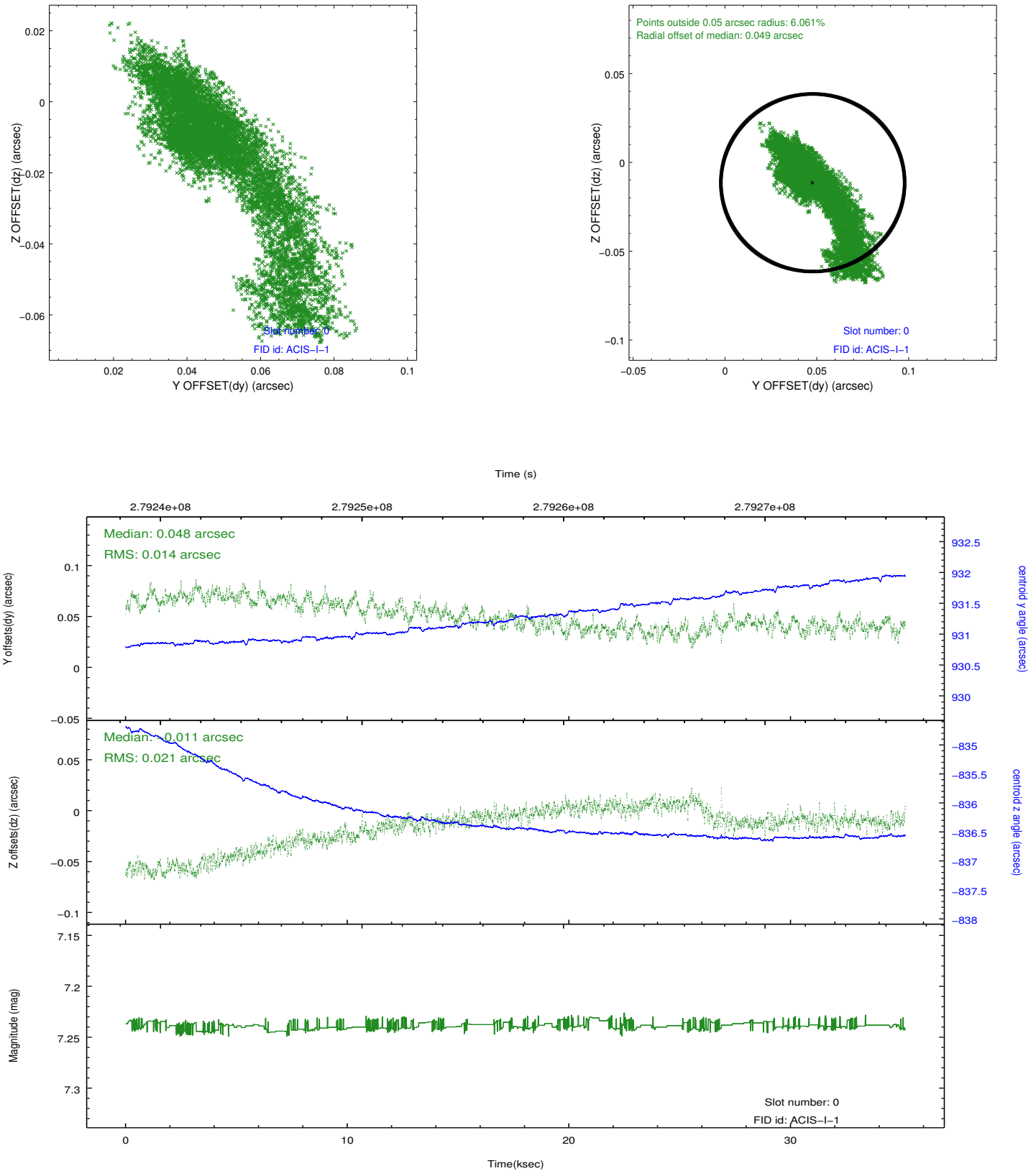


2.4.5 Slot 7

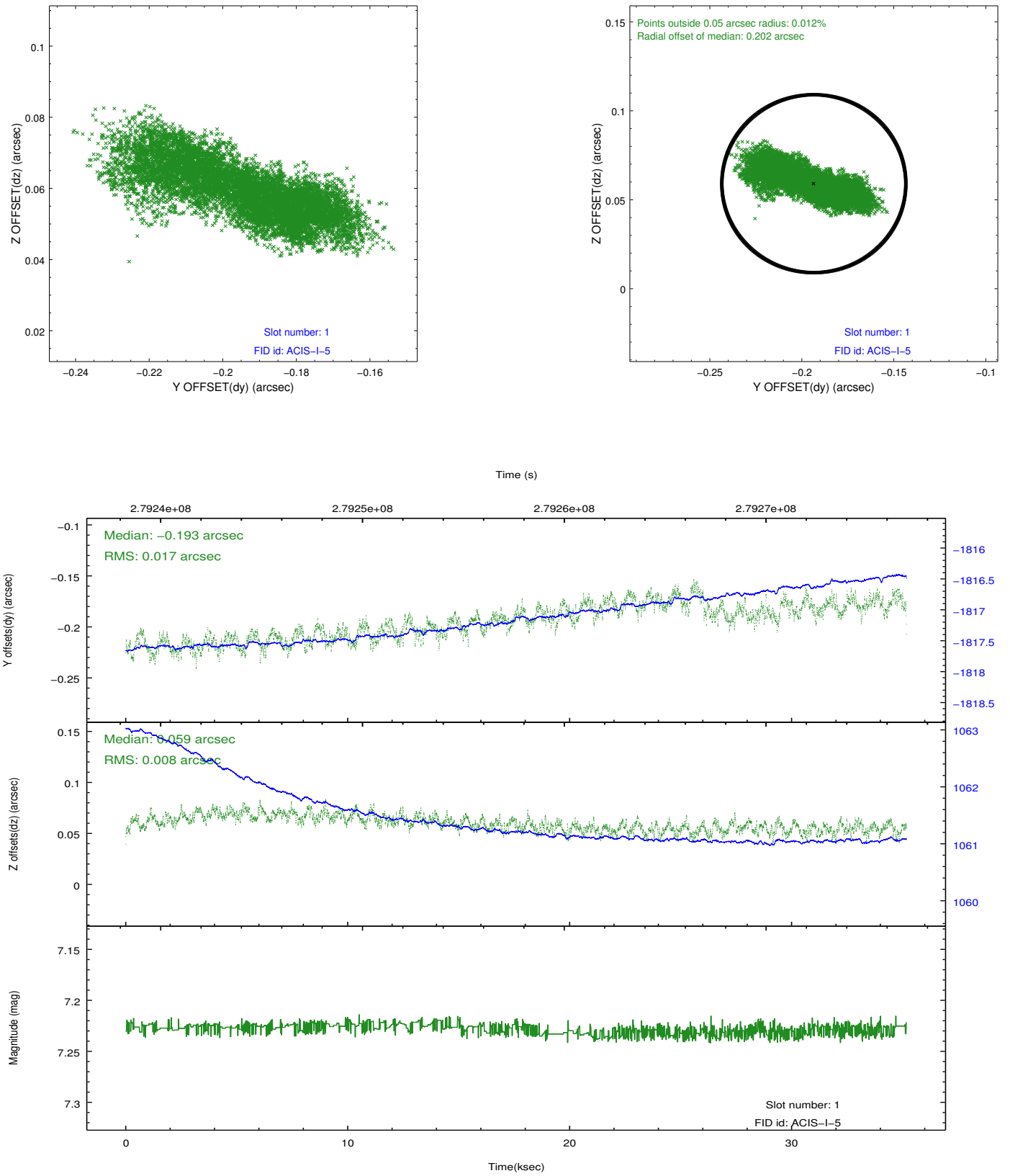


2.5 FID Slots

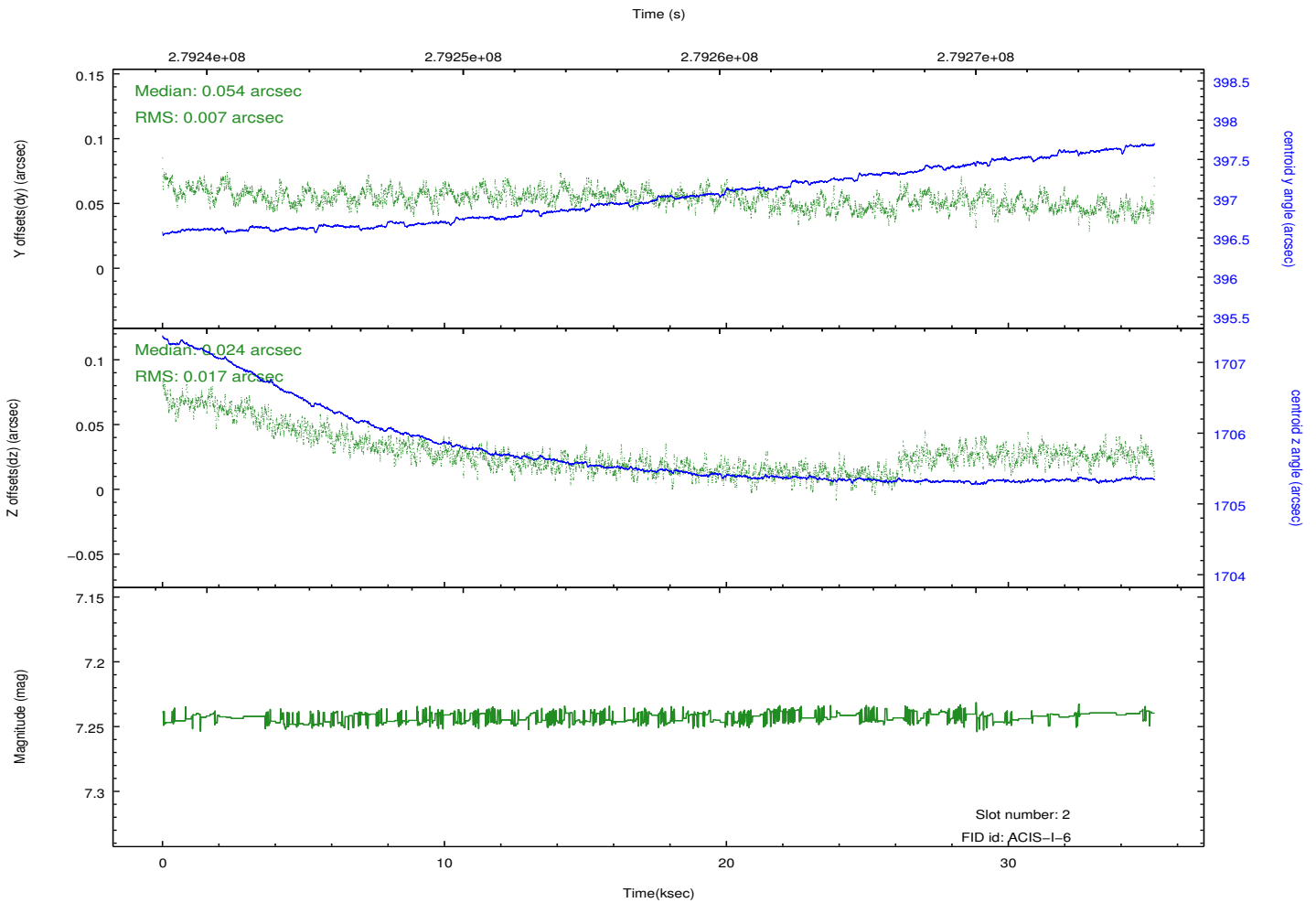
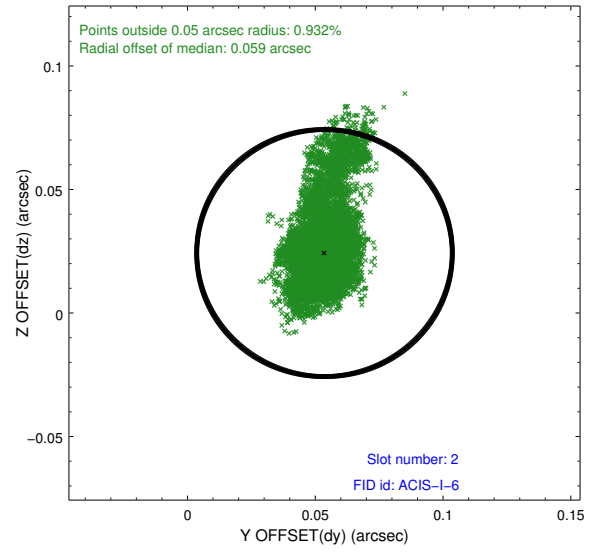
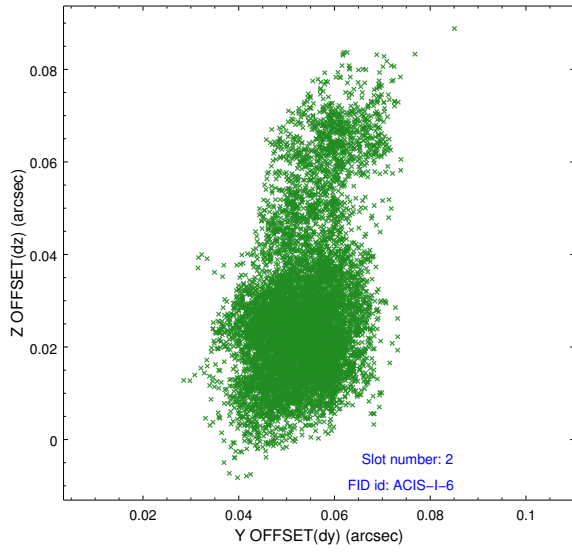
2.5.1 Slot 0



2.5.2 Slot 1



2.5.3 Slot 2



A Summary

A.1 Status

V&V Scientist	Beth Sundheim
V&V Date (YYYY-MM-DD)	2012.04.13
V&V Edition	1
V&V Disposition and Status	OK
V&V Charge Time	35.1615179

A.2 Comments