

V&V Reference Report

L2 ASCDS Version : 8.4.3

Observation 6743 - L2 Version 3
Chandra X-Ray Center

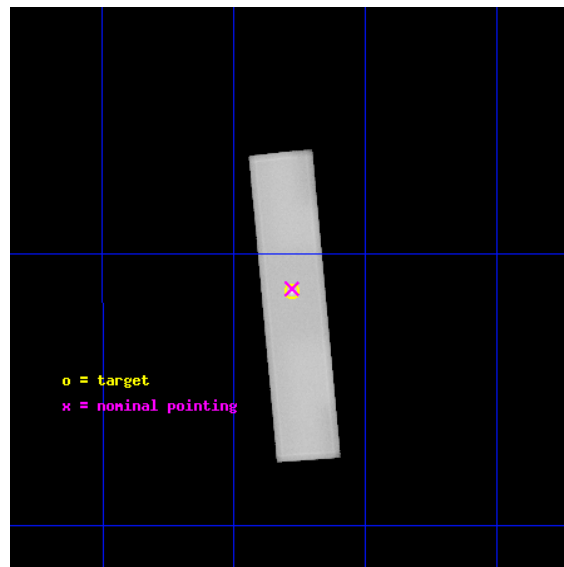
L2 Processing Date : Aug 11 2012

Contents

1	Front	2
2	OBI	3
2.1	OBI	3
2.1.1	Images	3
2.1.2	Parameters	4
2.1.3	Events	4
2.2	Compared Parameters	5
2.3	Aspect	6
2.4	Star Slots	9
2.4.1	Slot 3	9
2.4.2	Slot 4	10
2.4.3	Slot 5	11
2.4.4	Slot 6	12
2.4.5	Slot 7	13
2.5	FID Slots	14
2.5.1	Slot 0	14
2.5.2	Slot 1	15
2.5.3	Slot 2	16
A	Summary	17
A.1	Status	17
A.2	Comments	17

1 Front

seq_num	590426	Sequence number
obs_id	6743	Observation id
title	AO7 Observations of the Standard Candles Cas A and G21.5-09	Propos
observer	Dr. CXC Calibration	Principal investigator
object	G21.5-09	Source name
ra_targ	278.389583	Observer's specified target RA [deg]
dec_targ	-10.568528	Observer's specified target Dec [deg]
ra_nom	278.3901558786	Nominal RA [deg]
dec_nom	-10.563971935086	Nominal Dec [deg]
roll_nom	84.601991399332	Nominal Roll [deg]
revision	3	Processing version of data
ontime	20185.5821881	[s]
livetime	19881.678711439	Ontime multiplied by DTCOR
l2events	1711236	Number of level 2 events

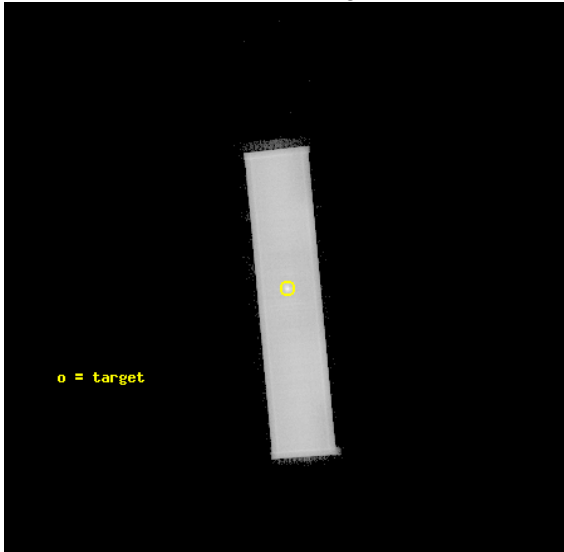


2 OBI

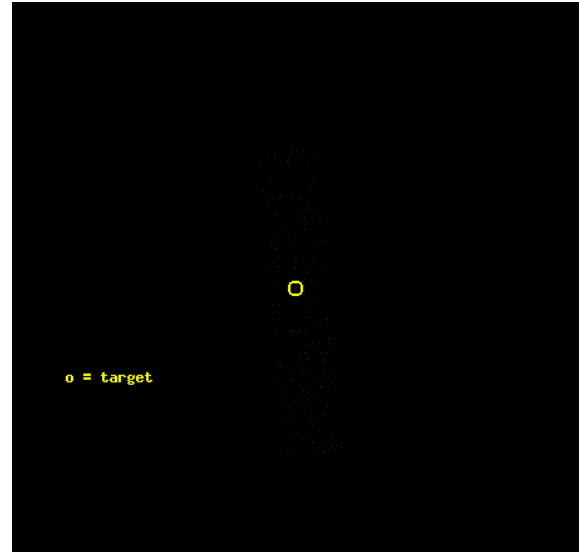
2.1 OBI

2.1.1 Images

Level 1 Image



Level 1 Bad Events



2.1.2 Parameters

obi_num	0	Obi number	sched_exp_time	20000.000000	[s] Scheduled observation exposure time
ascdsver	8.4.5	Processing system revision	ontime	20185.5821881	[s]
caldsver	4.5.1.1	 	l1events	2007863	Number of level 1 events
date	2012-08-11T02:27:38	Date and time of file creation			
revision	3	Processing version of data			

2.1.3 Events

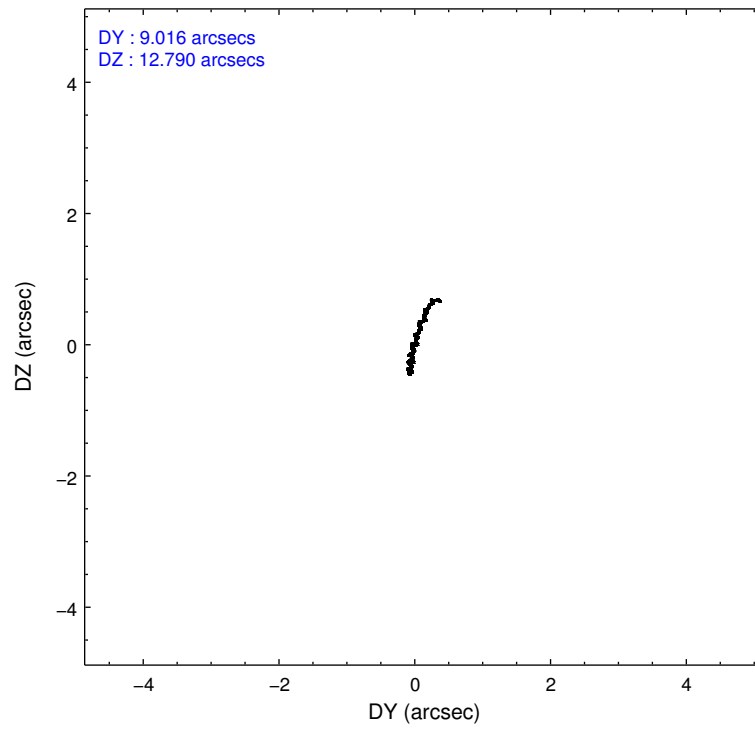
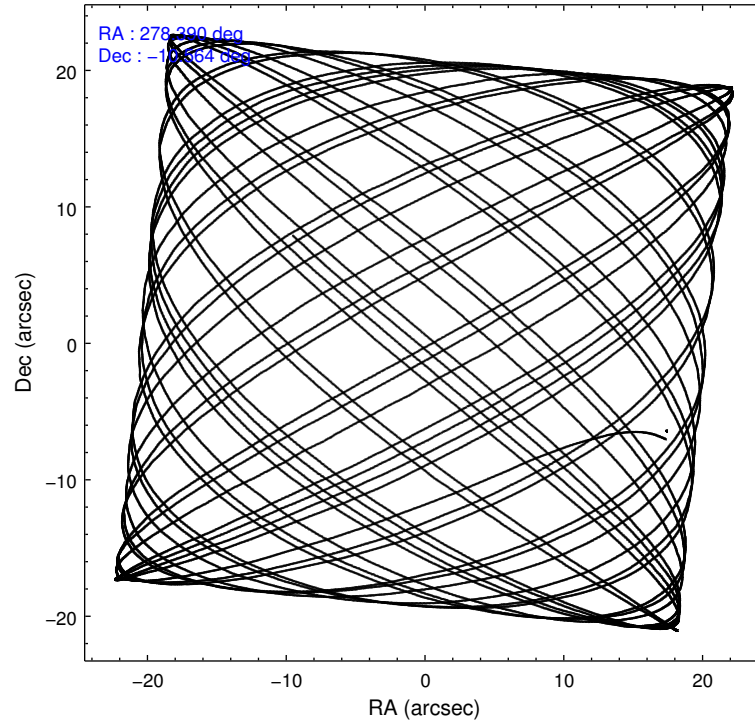
Level 1 Events

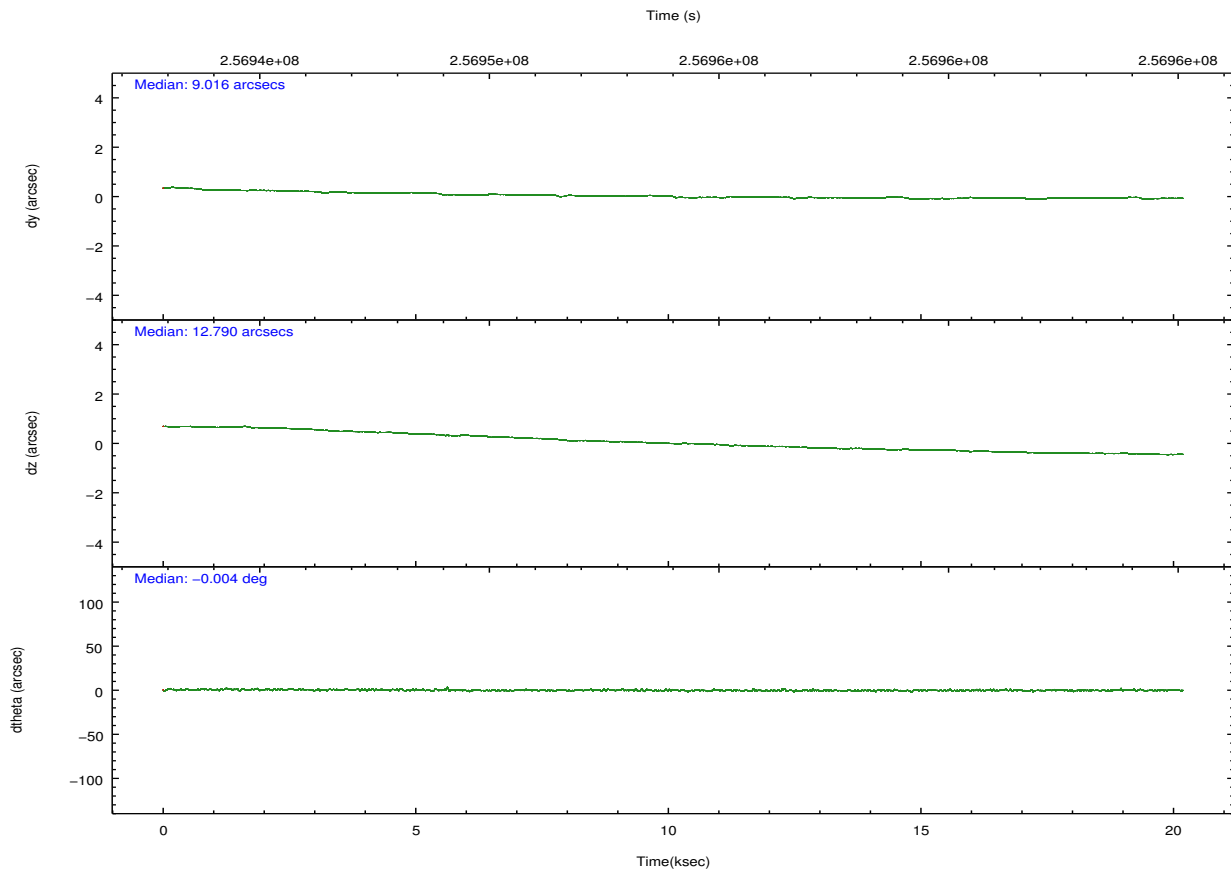
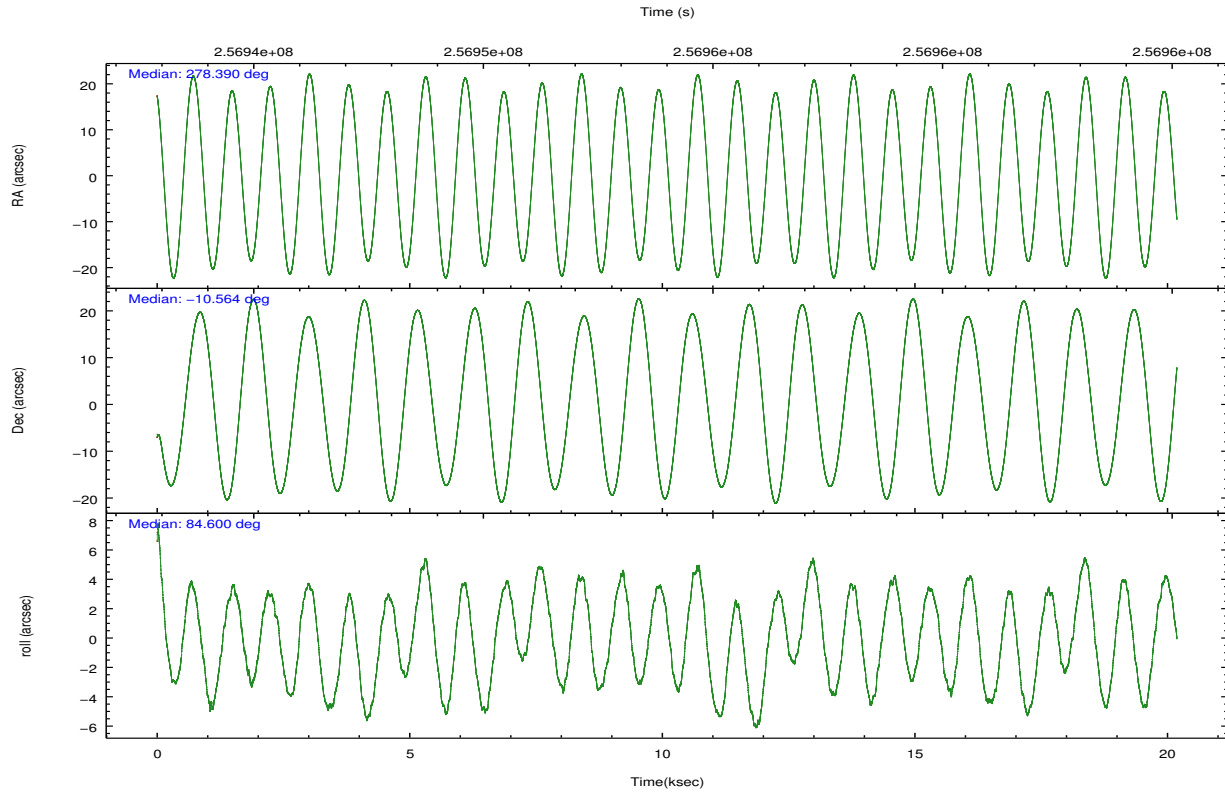
	segment 1	segment 2	segment 3
level 1 events	1	2007853	9
rejected events	1	70557	9
rejected %	100%	3%	100%

2.2 Compared Parameters

Parameter	Planned	Actual	Parameter	Planned	Actual
Instrument	HRC	HRC	Obspar format version number	7	7
Detector	HRC-S	HRC-S	Obspar file type	PREDICTED	ACTUAL
Grating	NONE	NONE	Obspar update status	NONE	UPDATED
Data mode	OBSERVING	OBSERVING			
Observation mode	POINTING	POINTING			
[deg] Pointing RA	278.403584	278.3901558785992			
[deg] Pointing Dec	-10.589265	-10.56397193508637			
[deg] Pointing Roll	84.537123	84.60199139933208			
[s] Window start time (MET)	255139265.184000	255139265.184000			
[s] Window stop time (MET)	270604865.184000	270604865.184000			
[mm] SIM focus pos	-1.533336	-1.526339935833849			
[mm] SIM defocus	7.710433287538843e-07	0.006996703570447904			
[mm] SIM translation stage pos	250.455976	250.466033080201			
[mm] SIM translation stage offset	0	-0.01005468664627074			
[s] Observation start time (MET)	256944091.184000	256943378.11137			
Observation start date	2006-02-21T21:20:26	2006-02-21T21:09:38			
[s] Observation end time (MET)	256964091.184000	256964336.79984			
Observation end date	2006-02-22T02:53:46	2006-02-22T02:58:56			

2.3 Aspect



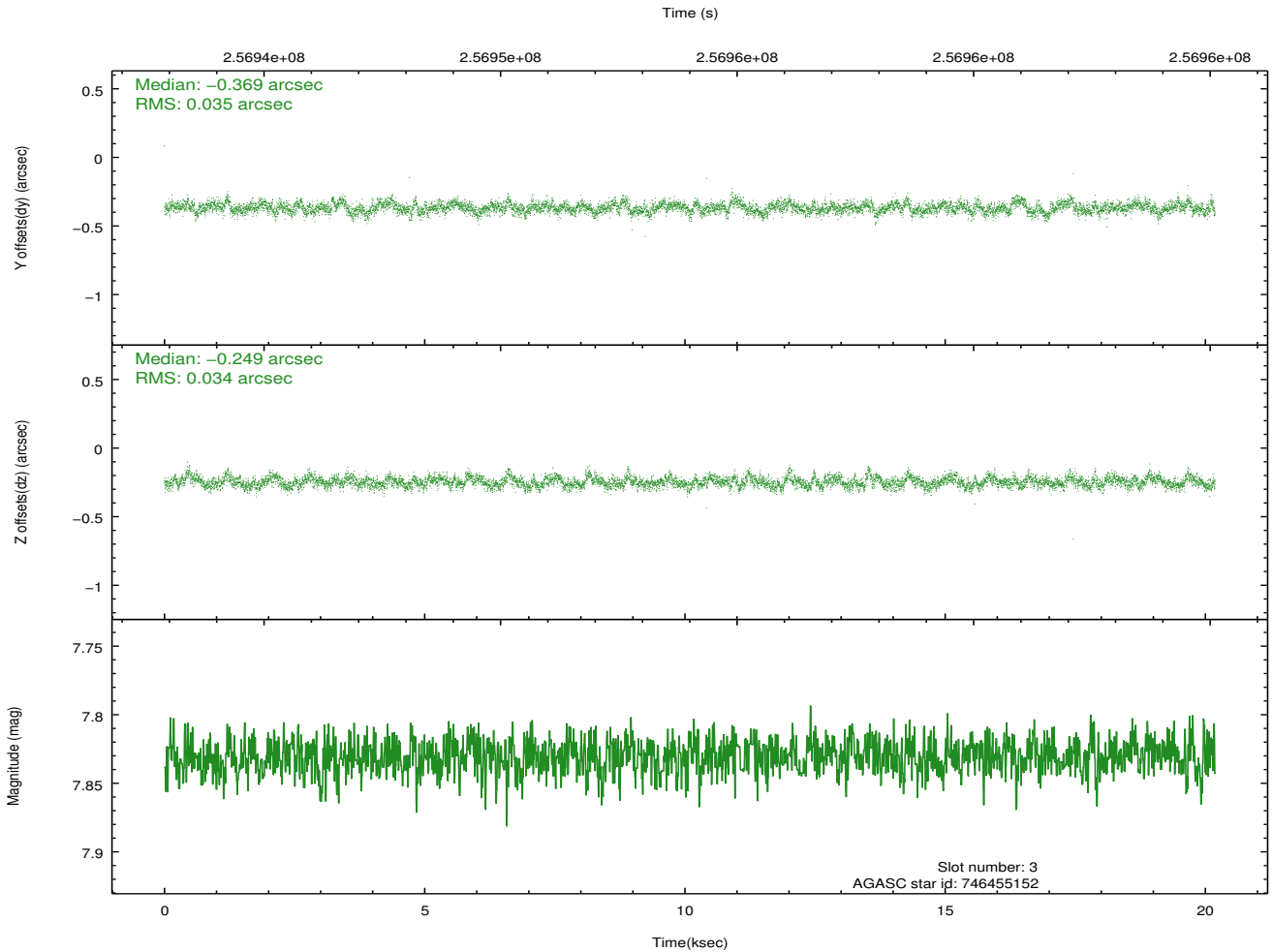
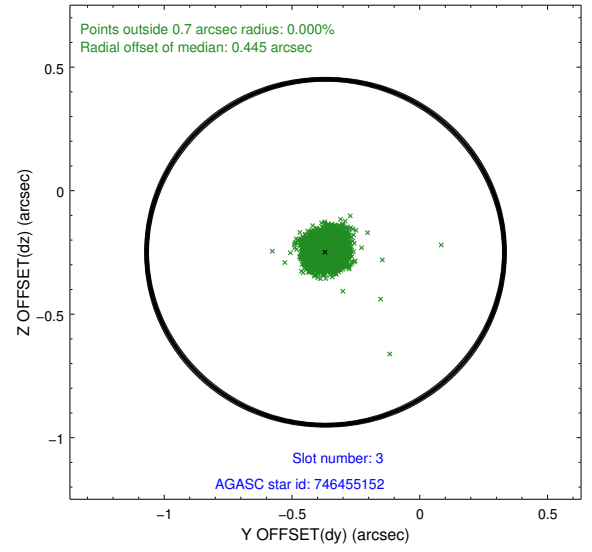
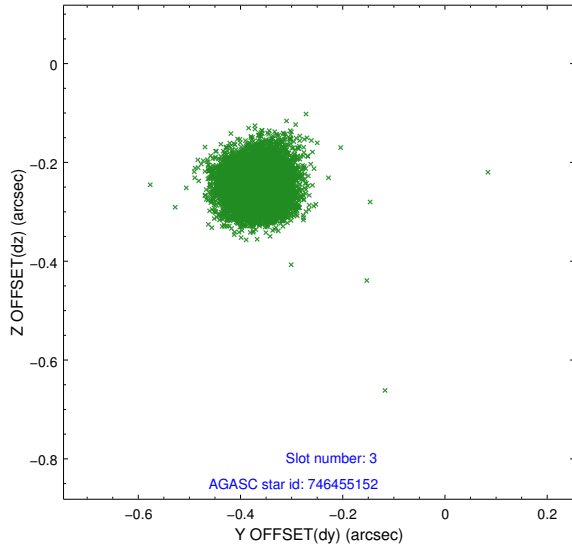


Slot Statistics

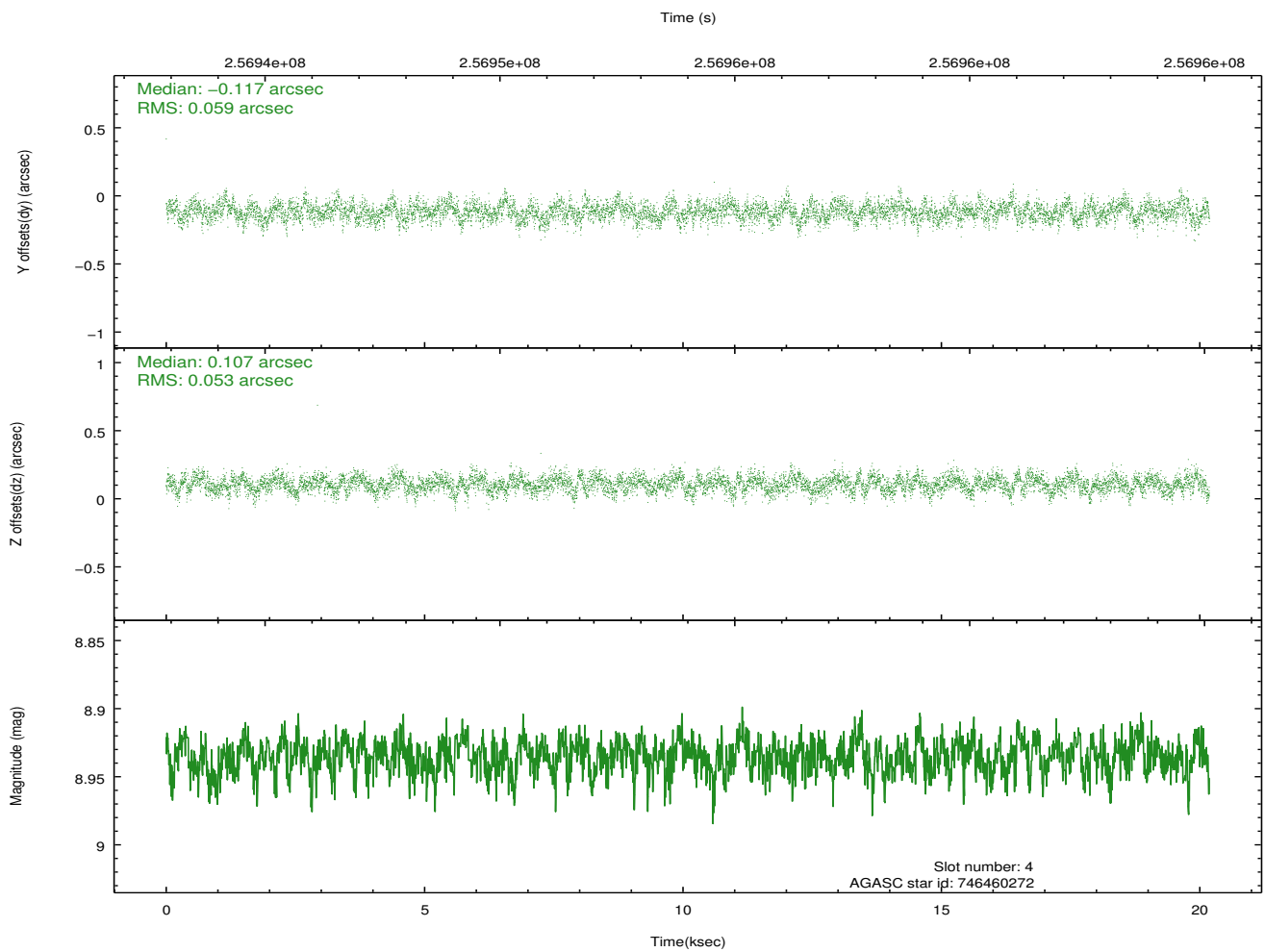
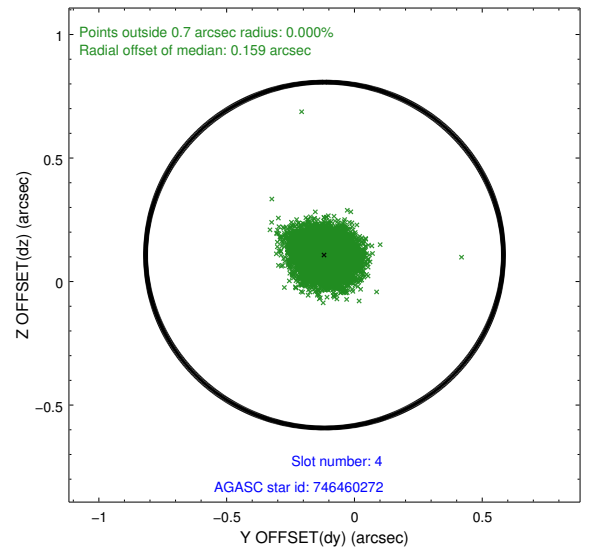
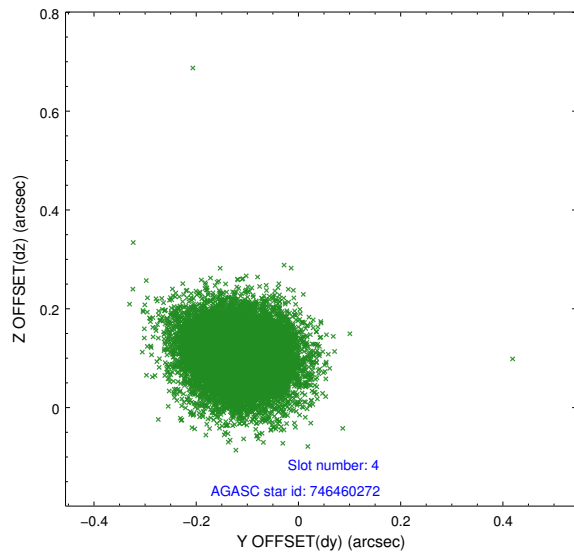
slot	status	id	mag	n_pts	med_dy	med_dz	dr1	dr2	ra	dec	mean_y	mean_z
0	FID	HRC-S-1	7.04	4924	0.141	-0.140	0.015	0.032	0.000000	0.000000	-1163.22	-461.61
1	FID	HRC-S-2	7.04	4924	0.128	-0.105	0.005	0.010	0.000000	0.000000	1236.18	-454.28
2	FID	HRC-S-3	7.05	4924	0.121	-0.057	0.014	0.029	0.000000	0.000000	-1165.72	567.91
3	GUIDE	746455152	7.83	9848	-0.369	-0.249	0.051	0.083	278.447893	-9.976732	2210.52	53.61
4	GUIDE	746460272	8.94	9816	-0.117	0.107	0.084	0.136	278.847488	-10.152127	1716.21	-1415.79
5	GUIDE	746462392	8.55	9847	0.161	0.137	0.080	0.133	279.038421	-10.890715	-868.82	-2338.32
6	GUIDE	746462456	8.38	9844	0.099	-0.048	0.070	0.118	278.652171	-10.530173	295.26	-855.93
7	GUIDE	746462680	9.02	9747	0.229	0.057	0.084	0.139	278.660755	-10.782756	-606.04	-971.53

2.4 Star Slots

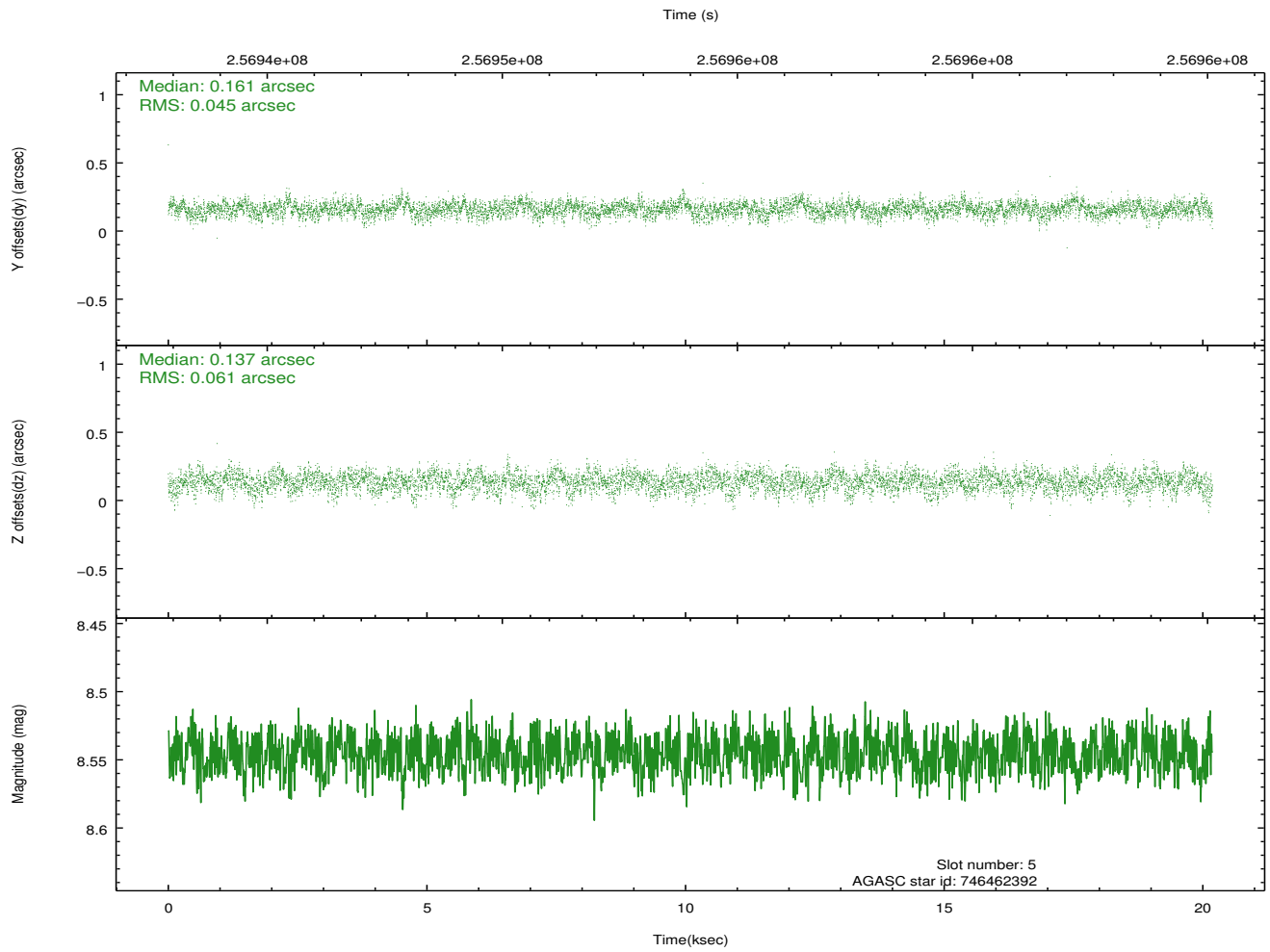
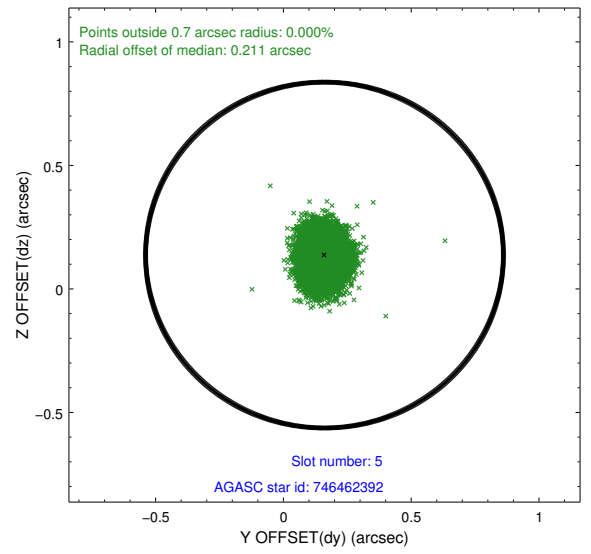
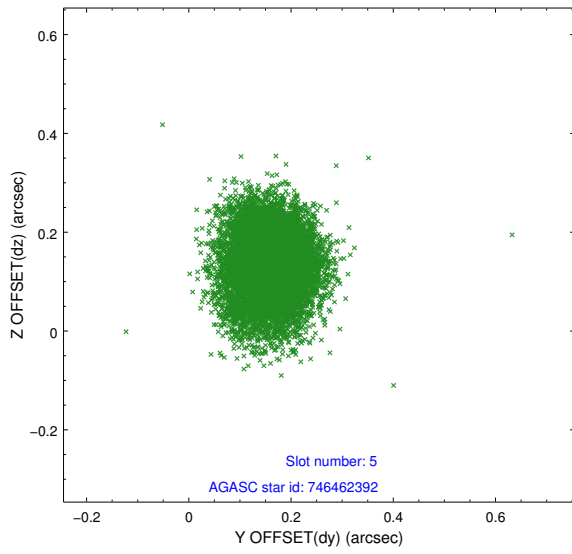
2.4.1 Slot 3



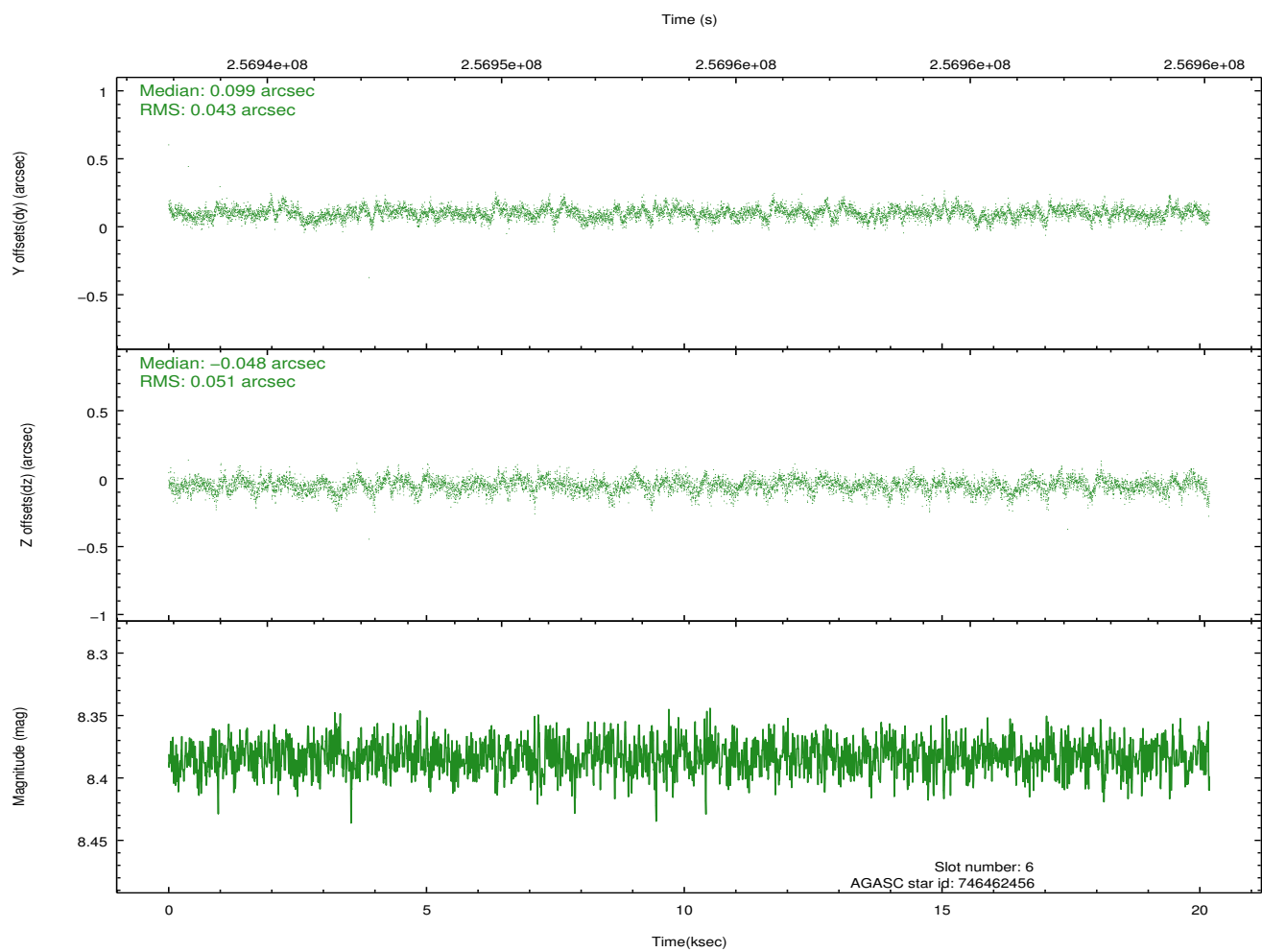
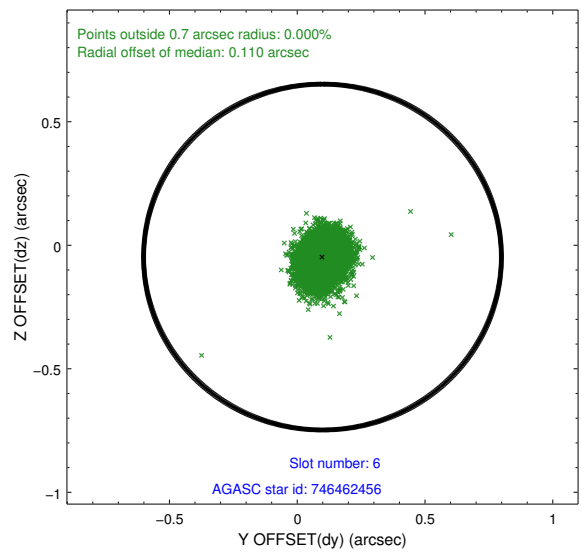
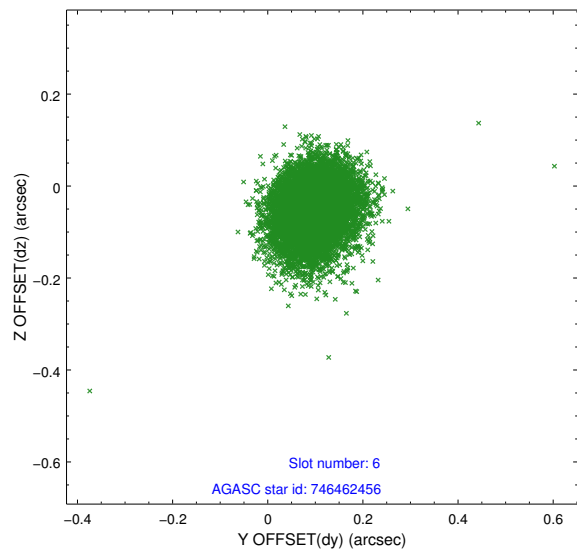
2.4.2 Slot 4



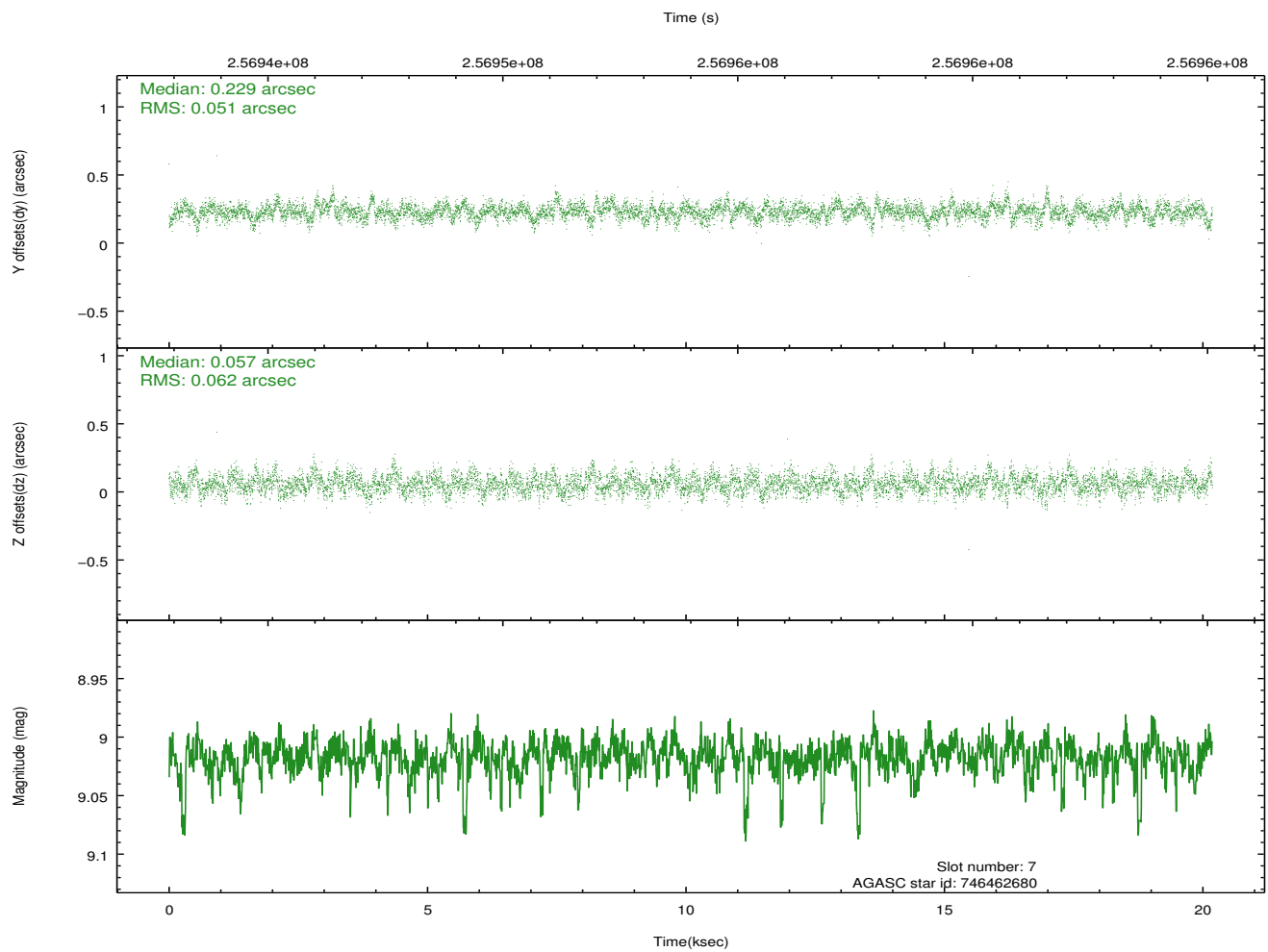
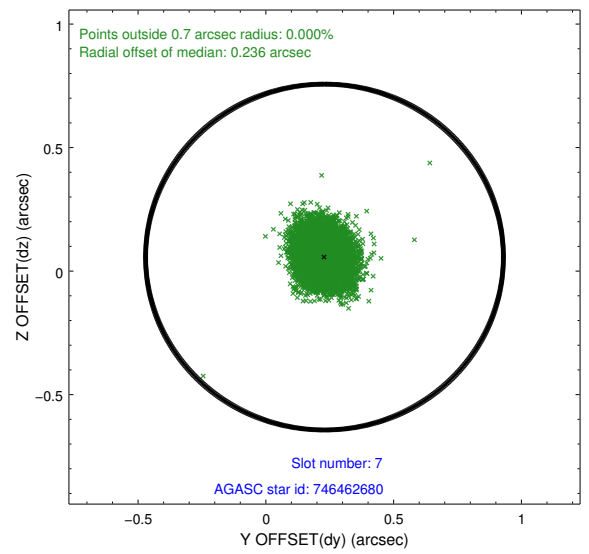
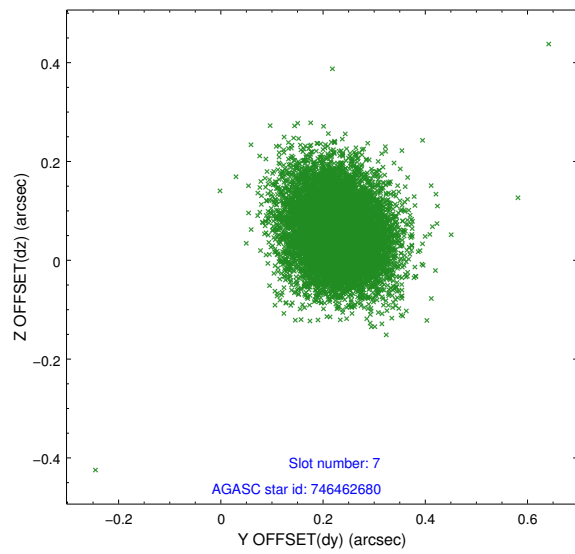
2.4.3 Slot 5



2.4.4 Slot 6

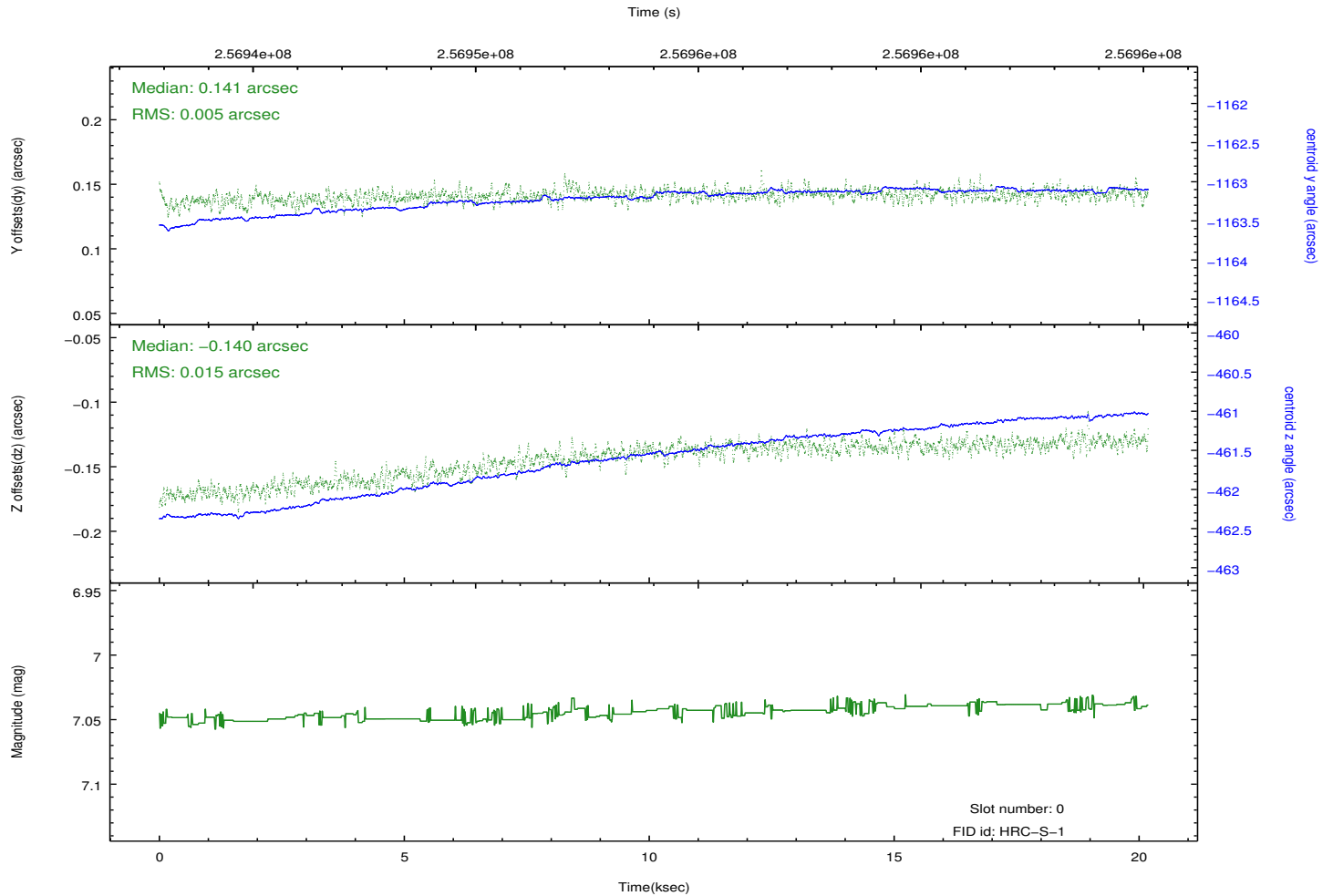
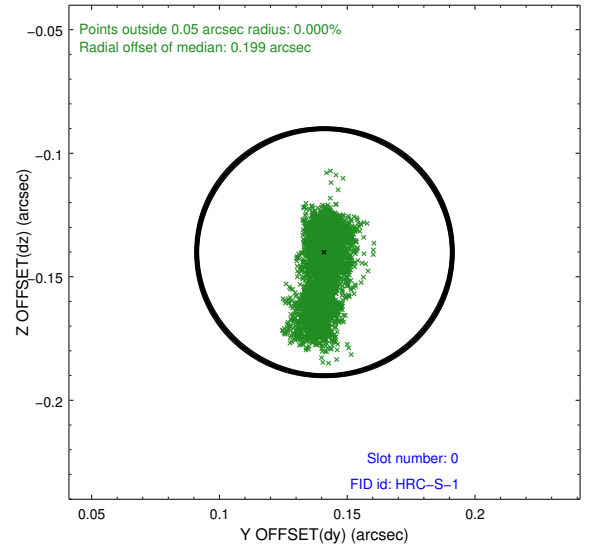
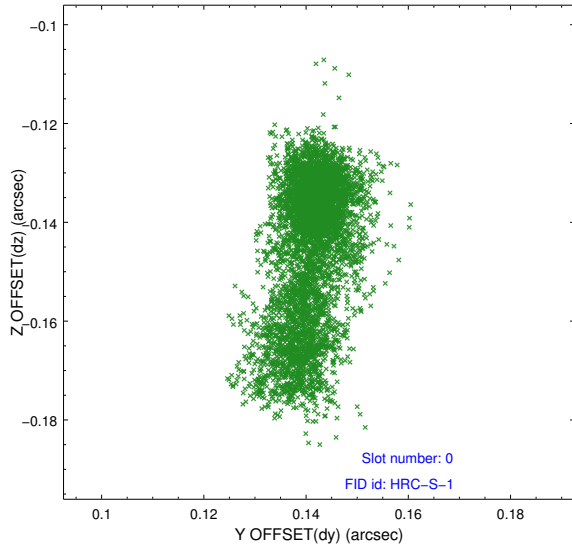


2.4.5 Slot 7

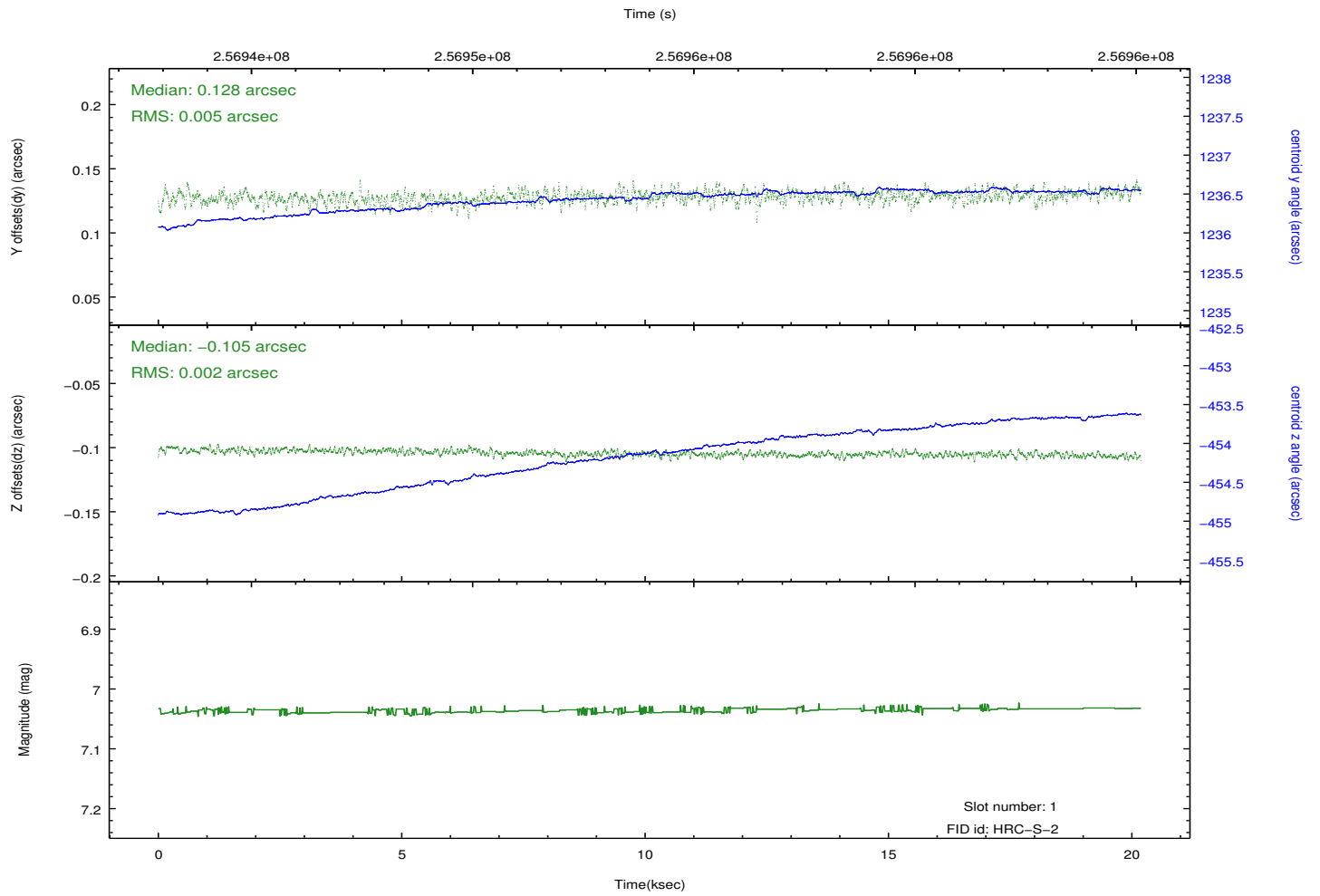
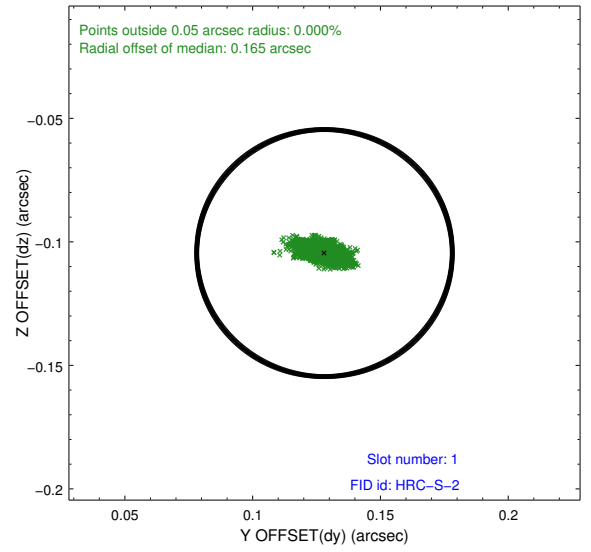
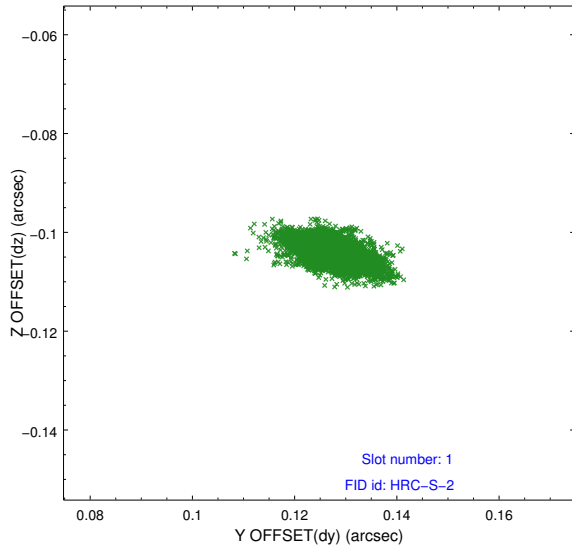


2.5 FID Slots

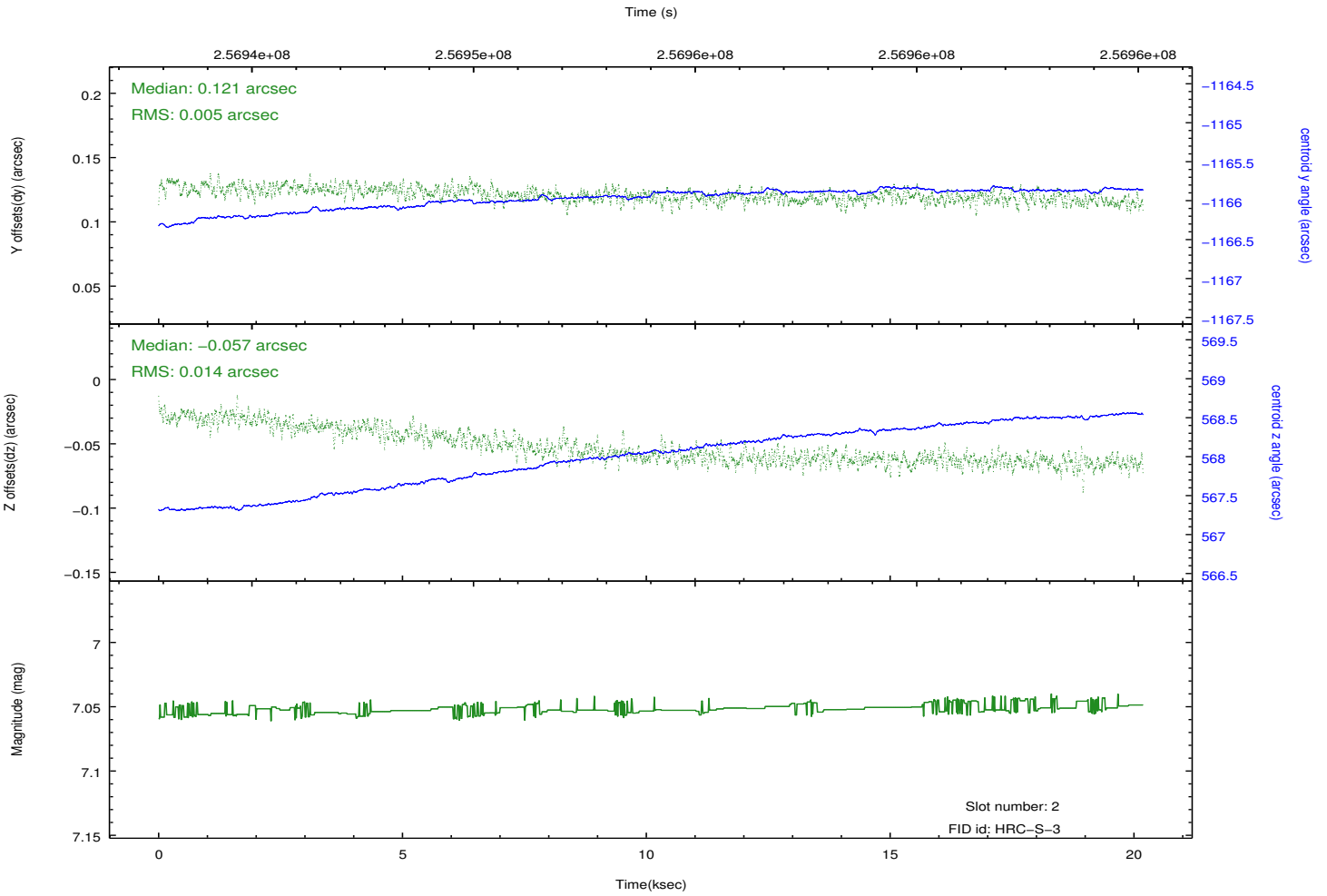
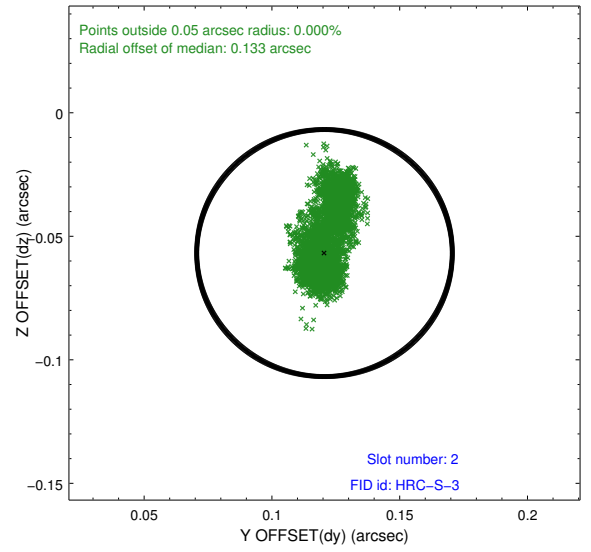
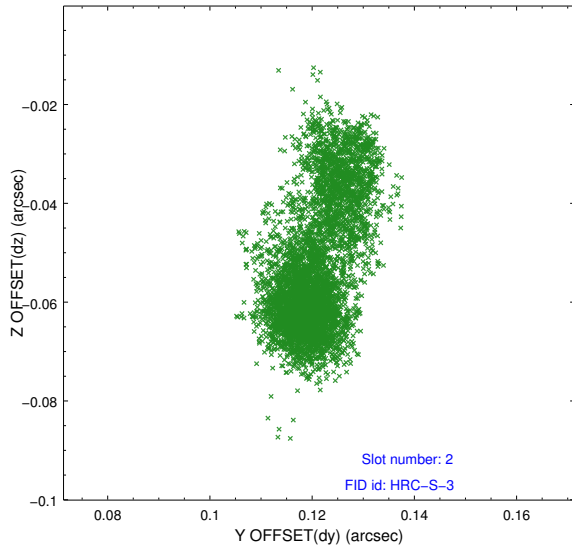
2.5.1 Slot 0



2.5.2 Slot 1



2.5.3 Slot 2



A Summary

A.1 Status

V&V Scientist	Jen Lauer
V&V Date (YYYY-MM-DD)	2012.08.13
V&V Edition	1
V&V Disposition and Status	OK
V&V Charge Time	20.1855821

A.2 Comments

Window constraint satisfied.