

V&V Reference Report

L2 ASCDS Version : 8.4.3

Observation 6863 - L2 Version 2
Chandra X-Ray Center

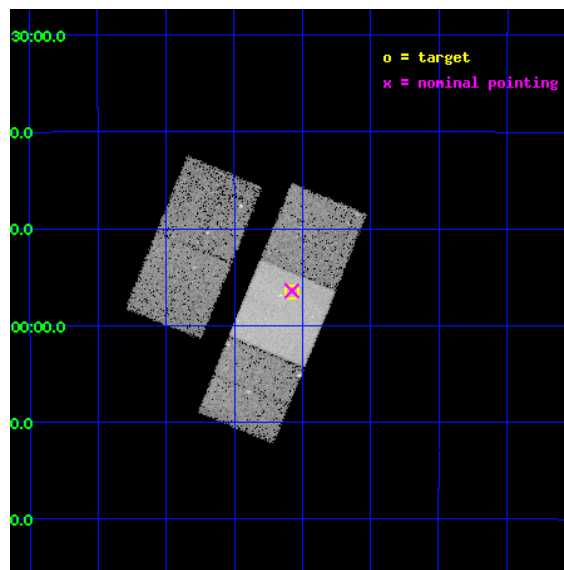
L2 Processing Date : Mar 31 2012

Contents

1	Front	2
2	OBI	3
2.1	OBI	3
2.1.1	Images	3
2.1.2	Bias	3
2.1.3	Parameters	4
2.1.4	Events	4
2.2	Compared Parameters	5
2.3	Aspect	6
2.4	Star Slots	9
2.4.1	Slot 3	9
2.4.2	Slot 4	10
2.4.3	Slot 5	11
2.4.4	Slot 6	12
2.4.5	Slot 7	13
2.5	FID Slots	14
2.5.1	Slot 0	14
2.5.2	Slot 1	15
2.5.3	Slot 2	16
A	Summary	17
A.1	Status	17
A.2	Comments	17

1 Front

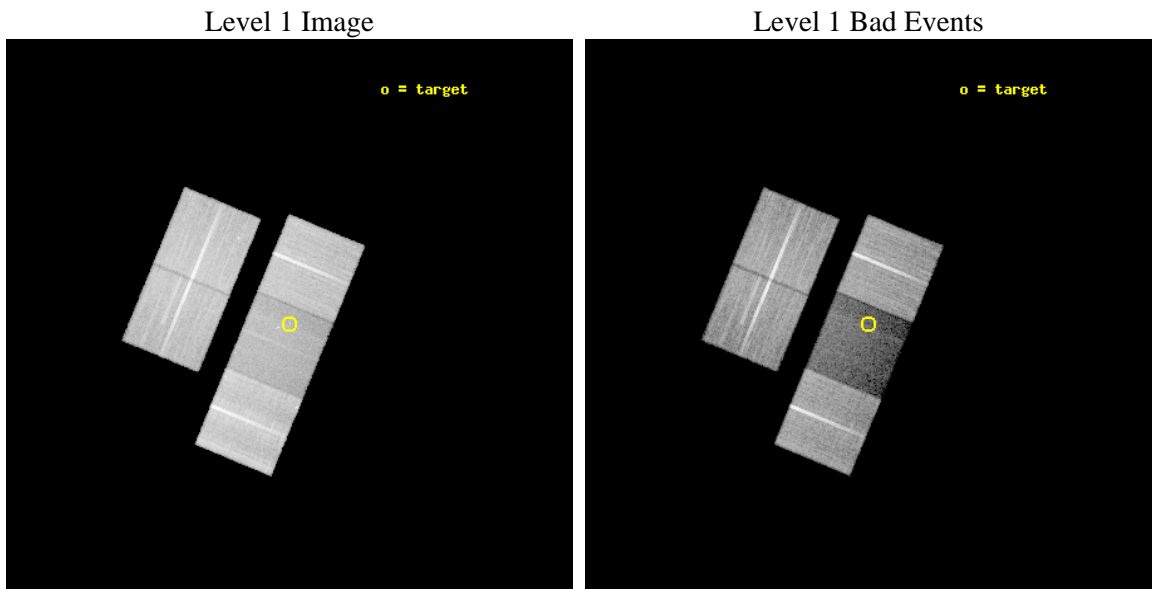
seq_num	701281	Sequence number
obs_id	6863	Observation id
title	Rapid Follow-Up Observations of Tidal Disruption Events Discovered in the GALEX Ultra-Deep Imaging Survey	Proposal title
observer	Dr. Suvi Gezari	Principal investigator
object	TDE J221404.4-175632.3	Source name
dtcycle	0	
cycle	P	events from which exps? Prim/Second/Both
ra_targ	333.518333	Observer's specified target RA [deg]
dec_targ	-17.942306	Observer's specified target Dec [deg]
ra_nom	333.51943778054	Nominal RA [deg]
dec_nom	-17.940508998033	Nominal Dec [deg]
roll_nom	112.46199592644	Nominal Roll [deg]
revision	2	Processing version of data
ontime	30131.999942034	Sum of GTIs [s]
livetime	29738.303179936	Livetime [s]
ontime2	30128.858941853	Sum of GTIs [s]
ontime3	30131.999942034	Sum of GTIs [s]
ontime6	30131.999942034	Sum of GTIs [s]
ontime7	30131.999942034	Sum of GTIs [s]
ontime8	30128.858971775	Sum of GTIs [s]
l2events	114248	Number of level 2 events



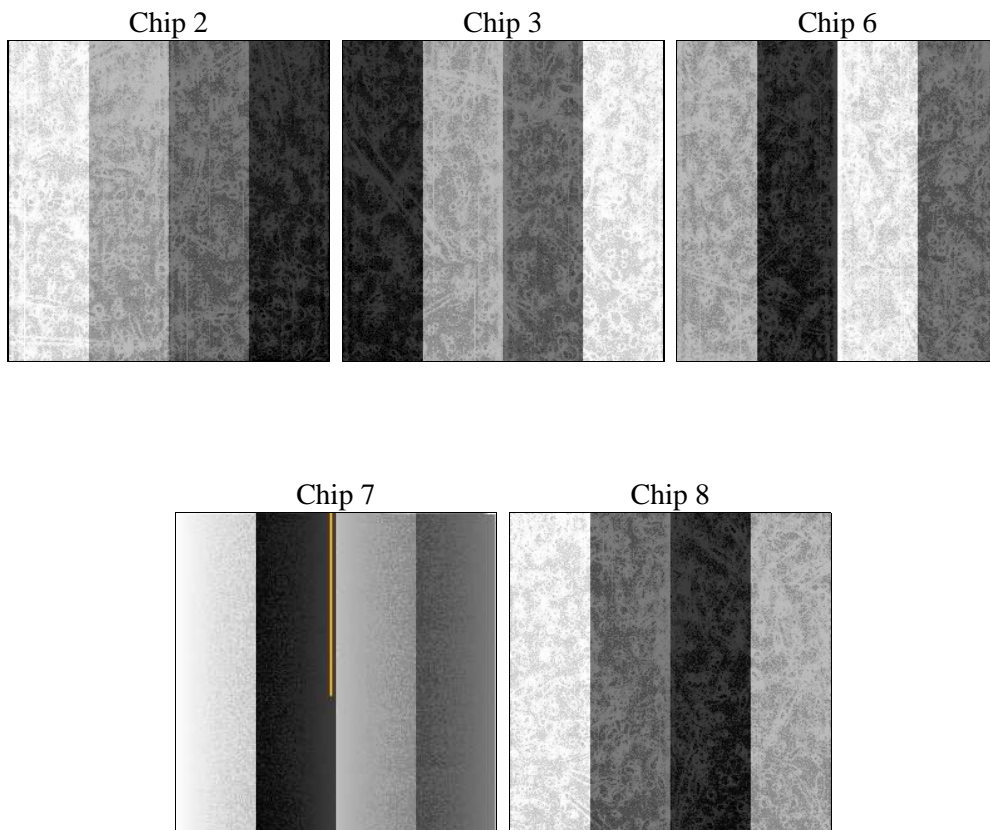
2 OBI

2.1 OBI

2.1.1 Images



2.1.2 Bias



2.1.3 Parameters

obi_num	0	Obi number	sched_exp_time	30000.000000	[s] Scheduled observation exposure time
ascdsver	8.4.3.1	Processing system revision	ontime	30131.999942034	Sum of GTIs [s]
caldbver	4.4.8	 	ontime2	30128.858941853	Sum of GTIs [s]
date	2012-03-31T12:05:12	Date and time of file creation	ontime3	30131.999942034	Sum of GTIs [s]
revision	2	Processing version of data	ontime6	30131.999942034	Sum of GTIs [s]
			ontime7	30131.999942034	Sum of GTIs [s]
			ontime8	30128.858971775	Sum of GTIs [s]
			l1events	919942	Number of level 1 events

2.1.4 Events

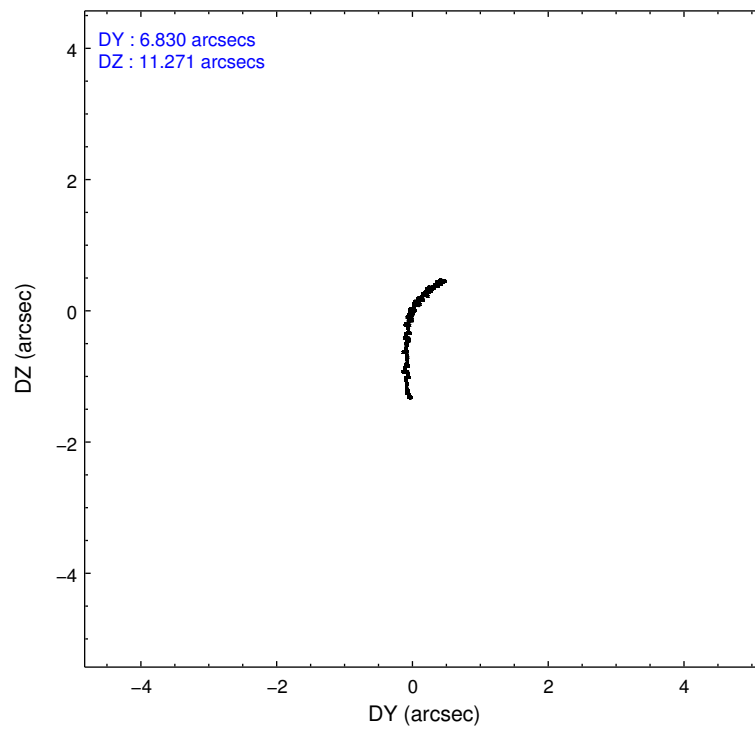
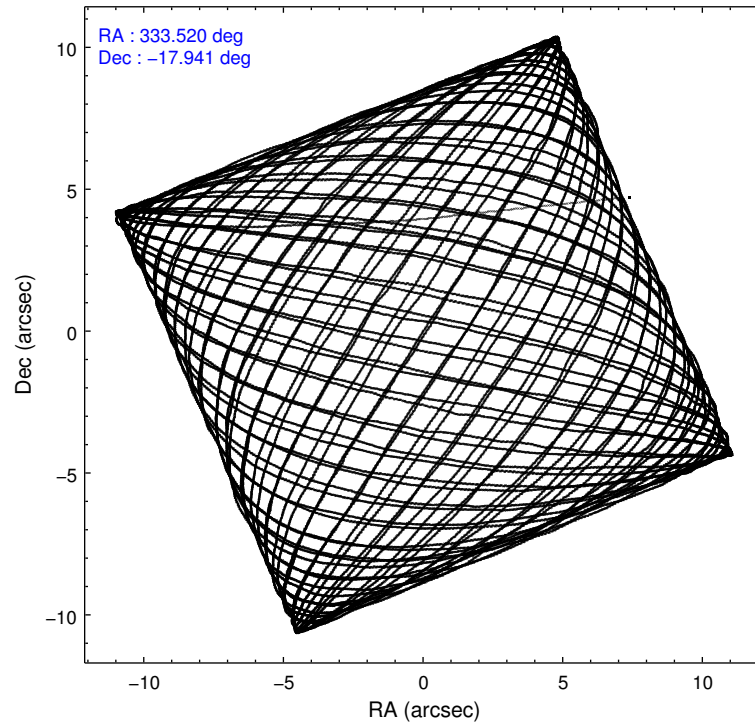
	ccd 2	ccd 3	ccd 6	ccd 7	ccd 8
level 1 events	203846	181678	195493	109783	229142
rejected events	187692	166821	178484	47269	171876
rejected %	92%	91%	91%	43%	75%

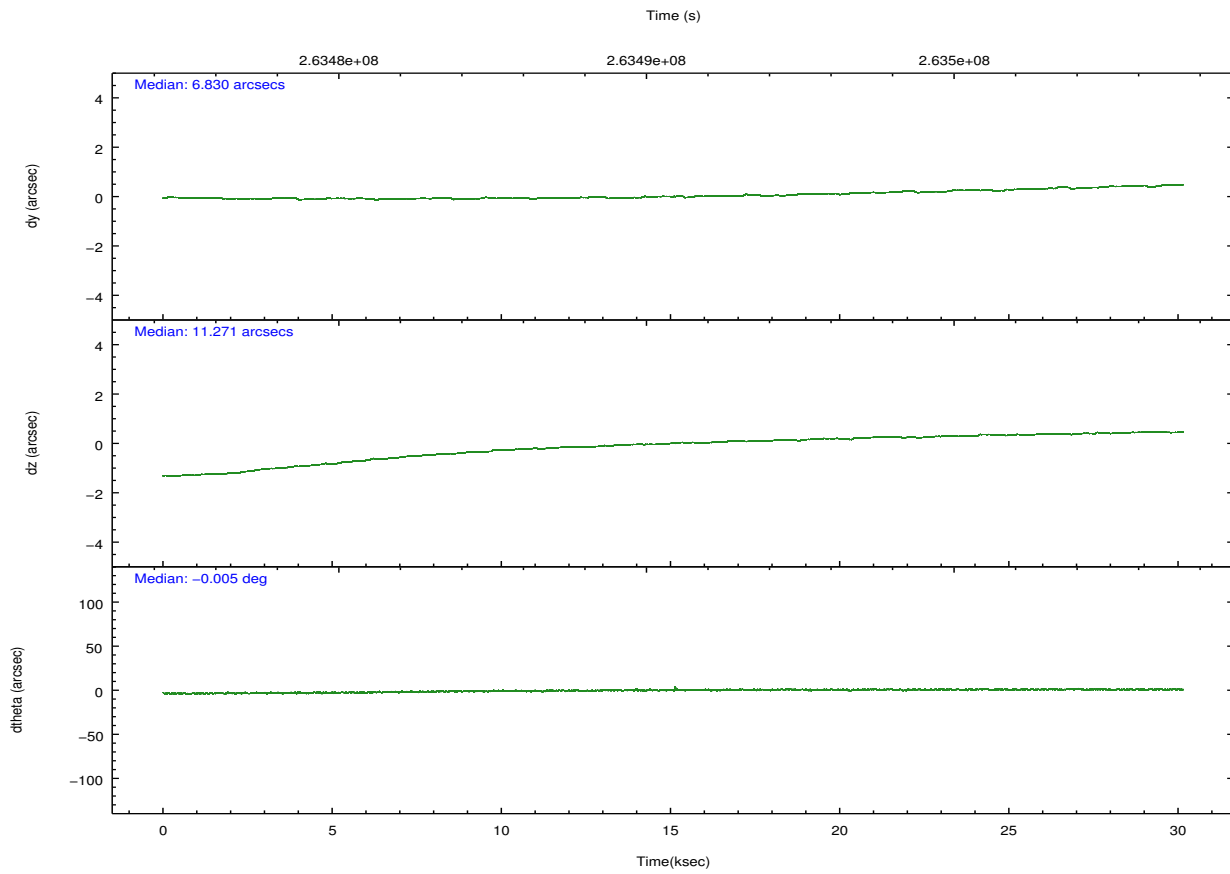
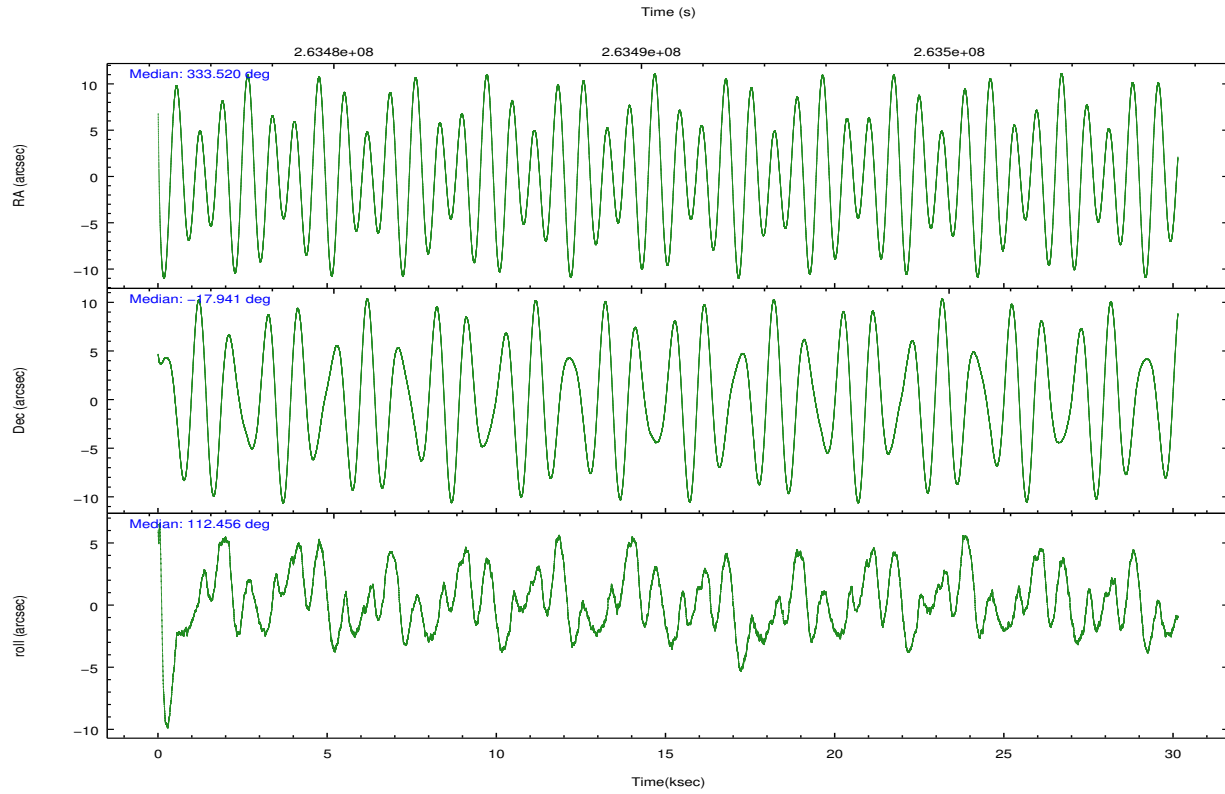
	ccd 2	ccd 3	ccd 6	ccd 7	ccd 8
grade 0 events	6759	6036	6989	8194	16250
	3%	3%	3%	7%	7%
grade 1 events	84	109	99	194	164
	0%	0%	0%	0%	0%
grade 2 events	3796	3125	3657	14876	13580
	1%	1%	1%	13%	5%
grade 3 events	1703	1743	1876	6681	6327
	0%	0%	0%	6%	2%
grade 4 events	1792	1645	1812	6469	5755
	0%	0%	0%	5%	2%
grade 5 events	2728	3714	3790	11697	6649
	1%	2%	1%	10%	2%
grade 6 events	2179	2395	2780	26729	15727
	1%	1%	1%	24%	6%
grade 7 events	184805	162911	174490	34943	164690
	90%	89%	89%	31%	71%

2.2 Compared Parameters

Parameter	Planned	Actual	Parameter	Planned	Actual
Instrument	ACIS	ACIS	Obspar format version number	7	7
Detector	ACIS-23678	ACIS-23678	Obspar file type	PREDICTED	ACTUAL
Grating	NONE	NONE	Obspar update status	NONE	UPDATED
Data mode	VFAINT	VFAINT	Number of optional ACIS chips dropped	0	0
Observation mode	POINTING	POINTING	On-chip summing requested	N	N
[deg] Pointing RA	333.542387	333.5194377805396	Subarray requested	NONE	NONE
[deg] Pointing Dec	-17.956817	-17.94050899803298	Alternating exposures requested	N	N
[deg] Pointing Roll	112.312442	112.4619959264362	[s] Primary exposure time	0.000000	3.1
[mm] SIM focus pos	-0.684267	-0.6828225247311905			
[mm] SIM defocus	0	0.001444936568705701			
[mm] SIM translation stage pos	-190.132523	-190.1400660498719			
[mm] SIM translation stage offset	0	0.00754346686406393			
[s] Observation start time (MET)	263475936.184000	263474862.91549			
Observation start date	2006-05-08T11:44:31	2006-05-08T11:27:42			
[s] Observation end time (MET)	263505936.184000	263506787.05448			
Observation end date	2006-05-08T20:04:31	2006-05-08T20:19:47			
Read mode	TIMED	TIMED			

2.3 Aspect



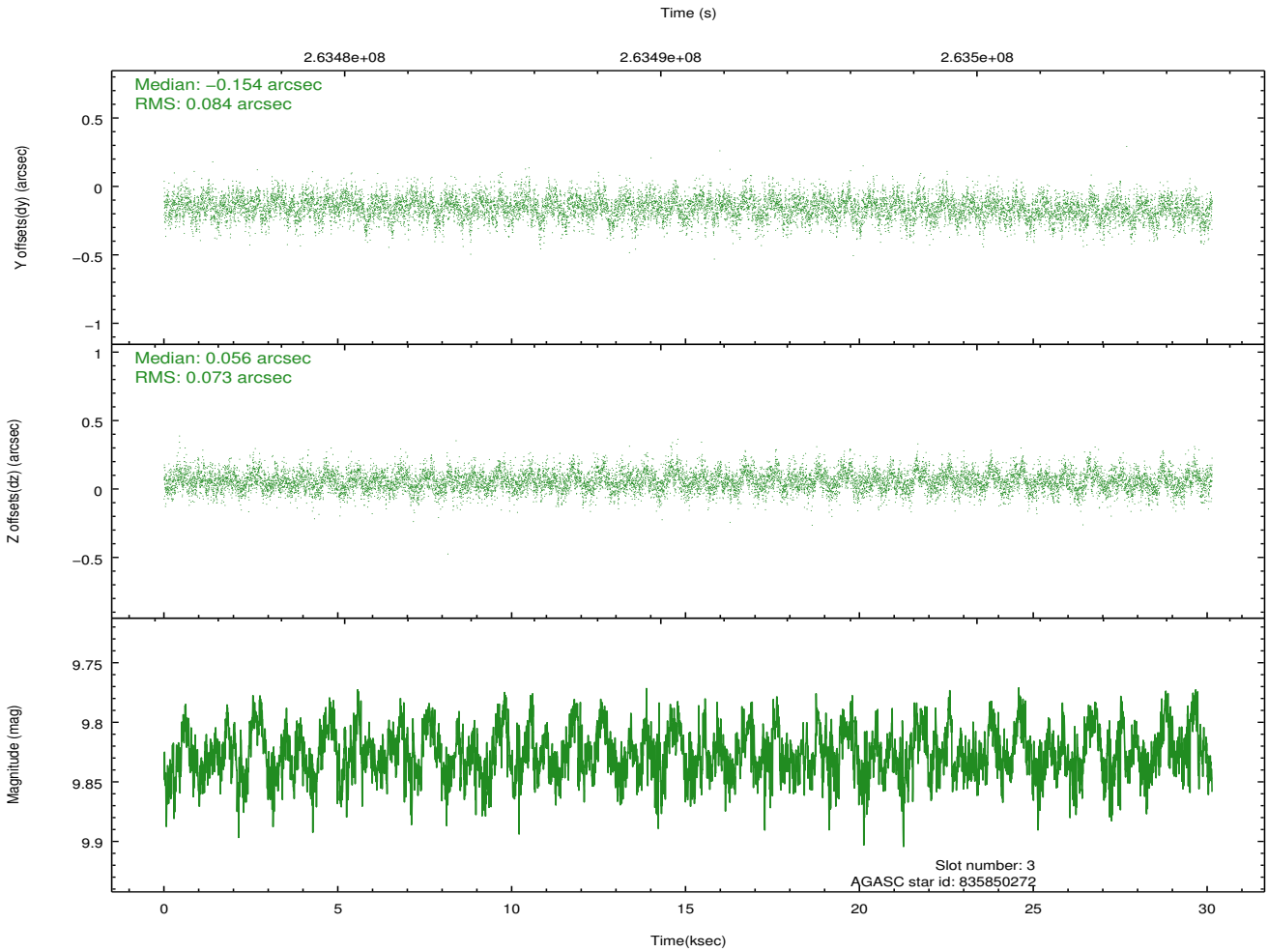
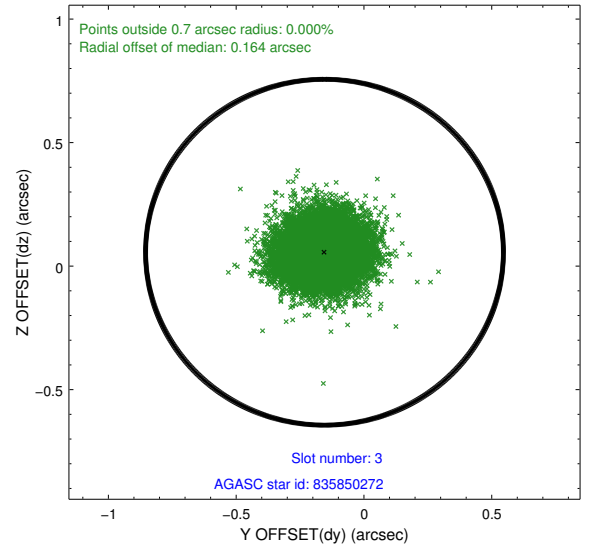
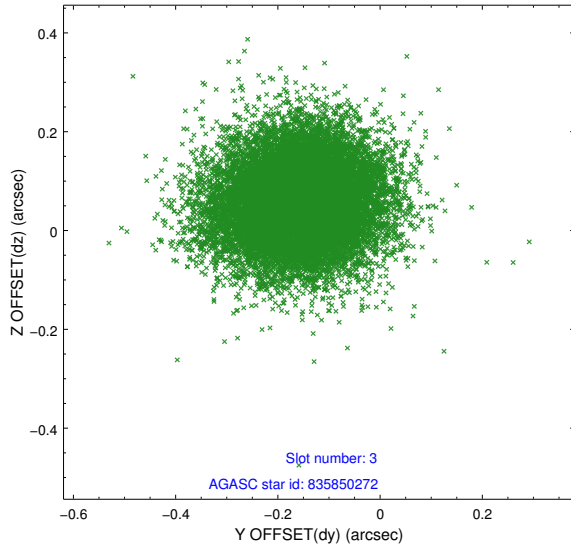


Slot Statistics

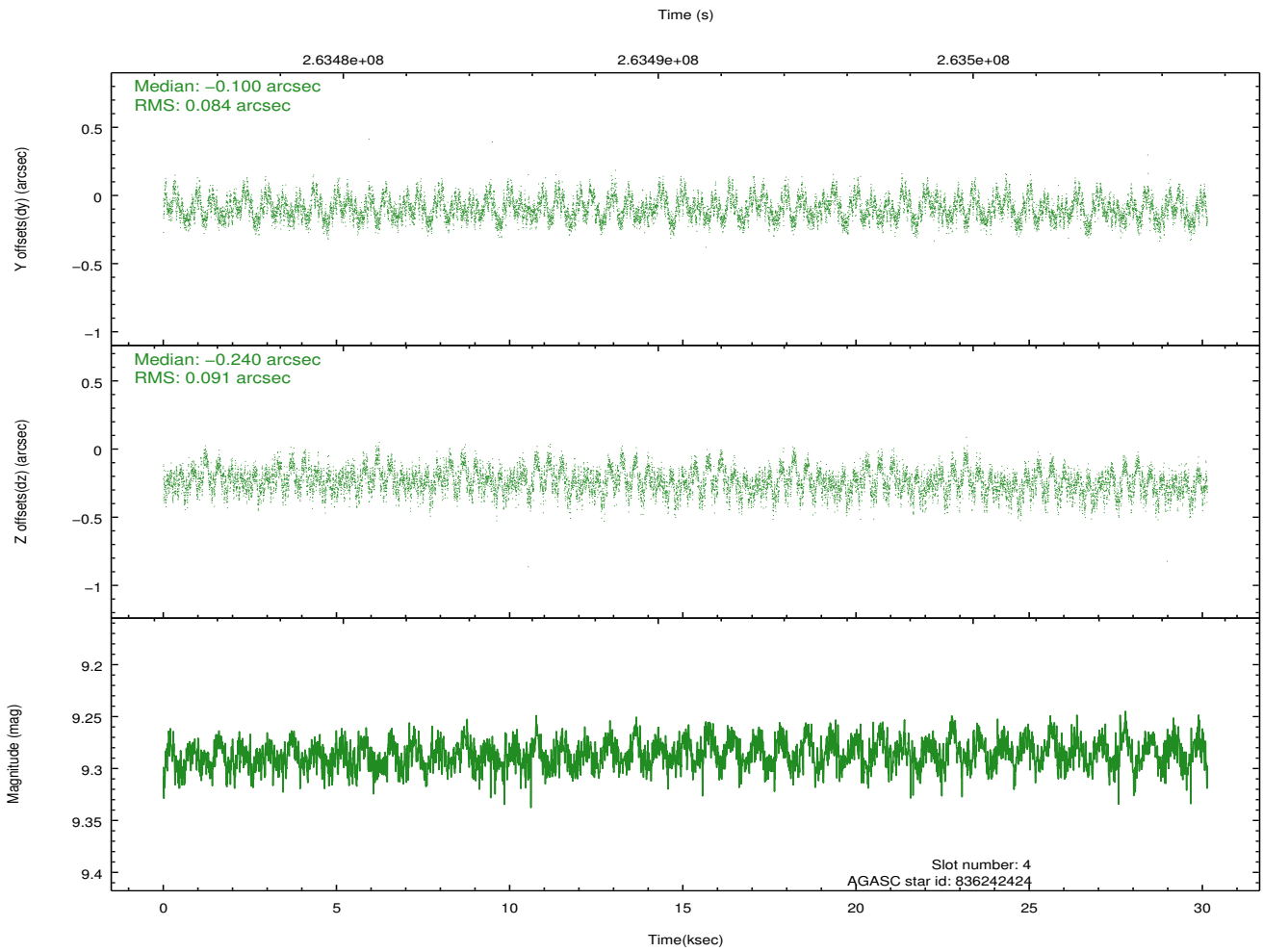
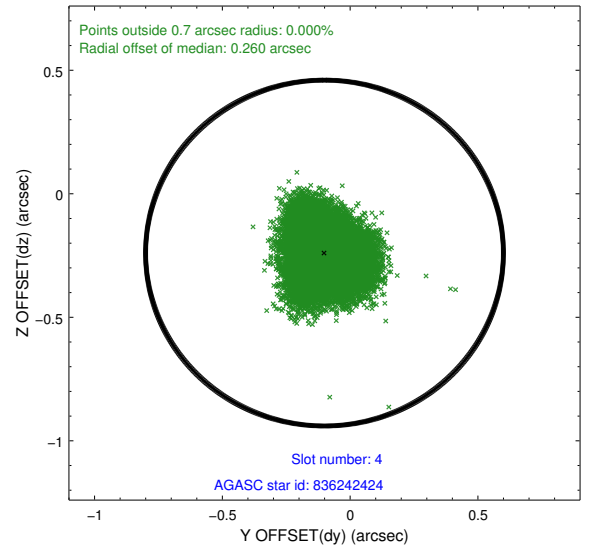
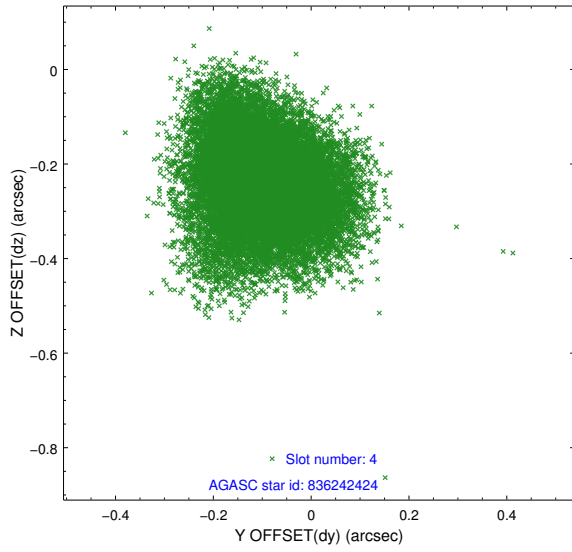
slot	status	id	mag	n_pts	med_dy	med_dz	dr1	dr2	ra	dec	mean_y	mean_z
0	FID	ACIS-S-1	7.18	7351	0.055	-0.098	0.017	0.051	0.000000	0.000000	936.42	-1728.11
1	FID	ACIS-S-5	7.24	7352	-0.079	0.028	0.014	0.021	0.000000	0.000000	-1812.64	169.52
2	FID	ACIS-S-6	7.35	7351	0.003	0.080	0.022	0.042	0.000000	0.000000	401.88	813.58
3	GUIDE	835850272	9.83	14683	-0.154	0.056	0.116	0.193	333.242614	-17.411688	2205.68	208.60
4	GUIDE	836242424	9.29	14692	-0.100	-0.240	0.135	0.209	332.947439	-17.972437	718.42	1907.44
5	GUIDE	836370768	9.52	14687	0.085	0.039	0.101	0.160	333.935509	-18.144712	-1138.57	-987.06
6	GUIDE	836372920	9.19	14693	0.094	-0.119	0.100	0.166	333.426953	-18.454923	-1509.29	1045.47
7	GUIDE	836377664	8.24	14700	0.075	0.257	0.079	0.120	334.386200	-18.161865	-1784.43	-2387.28

2.4 Star Slots

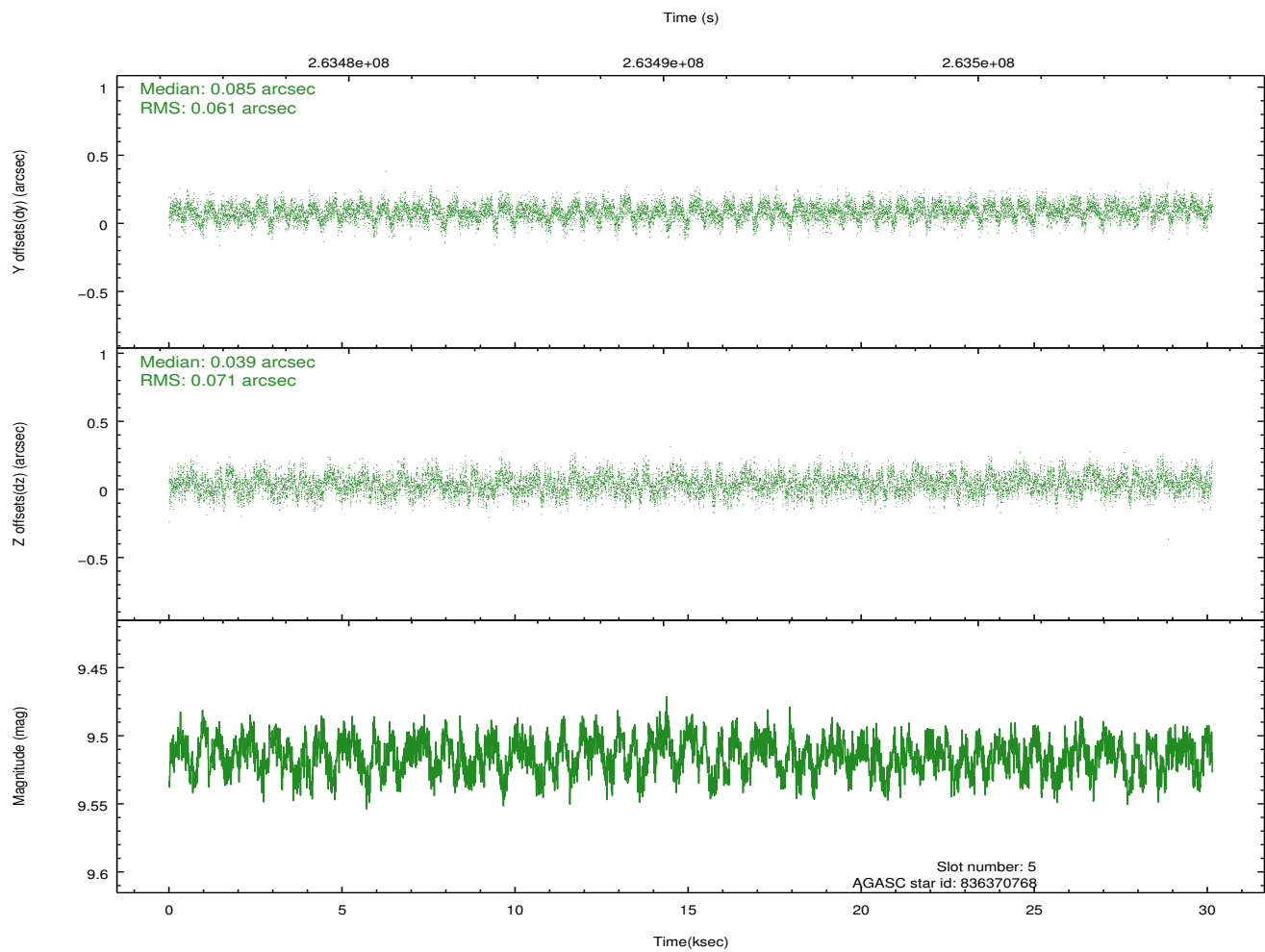
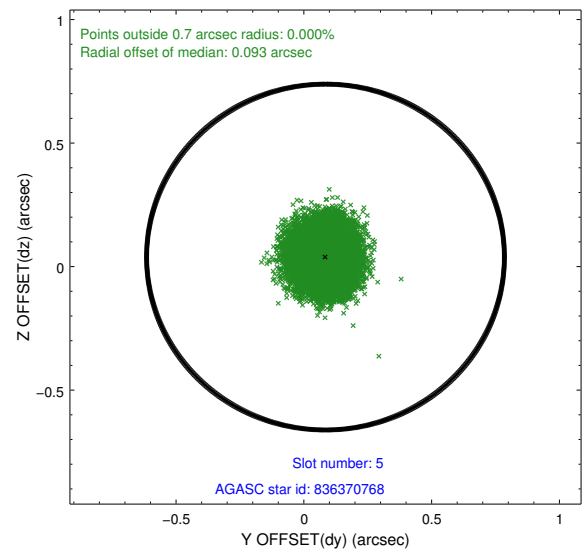
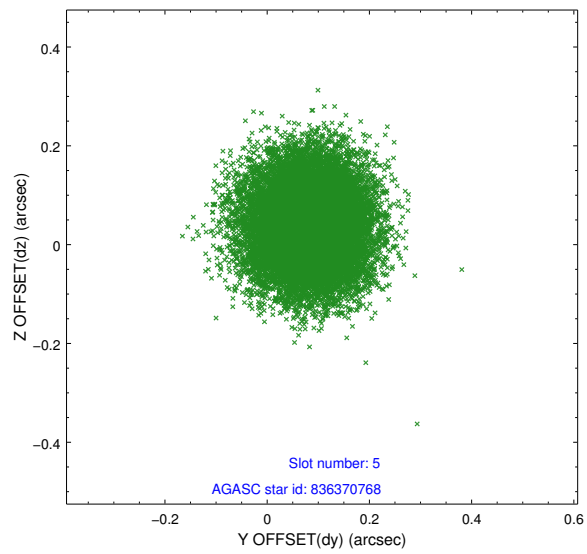
2.4.1 Slot 3



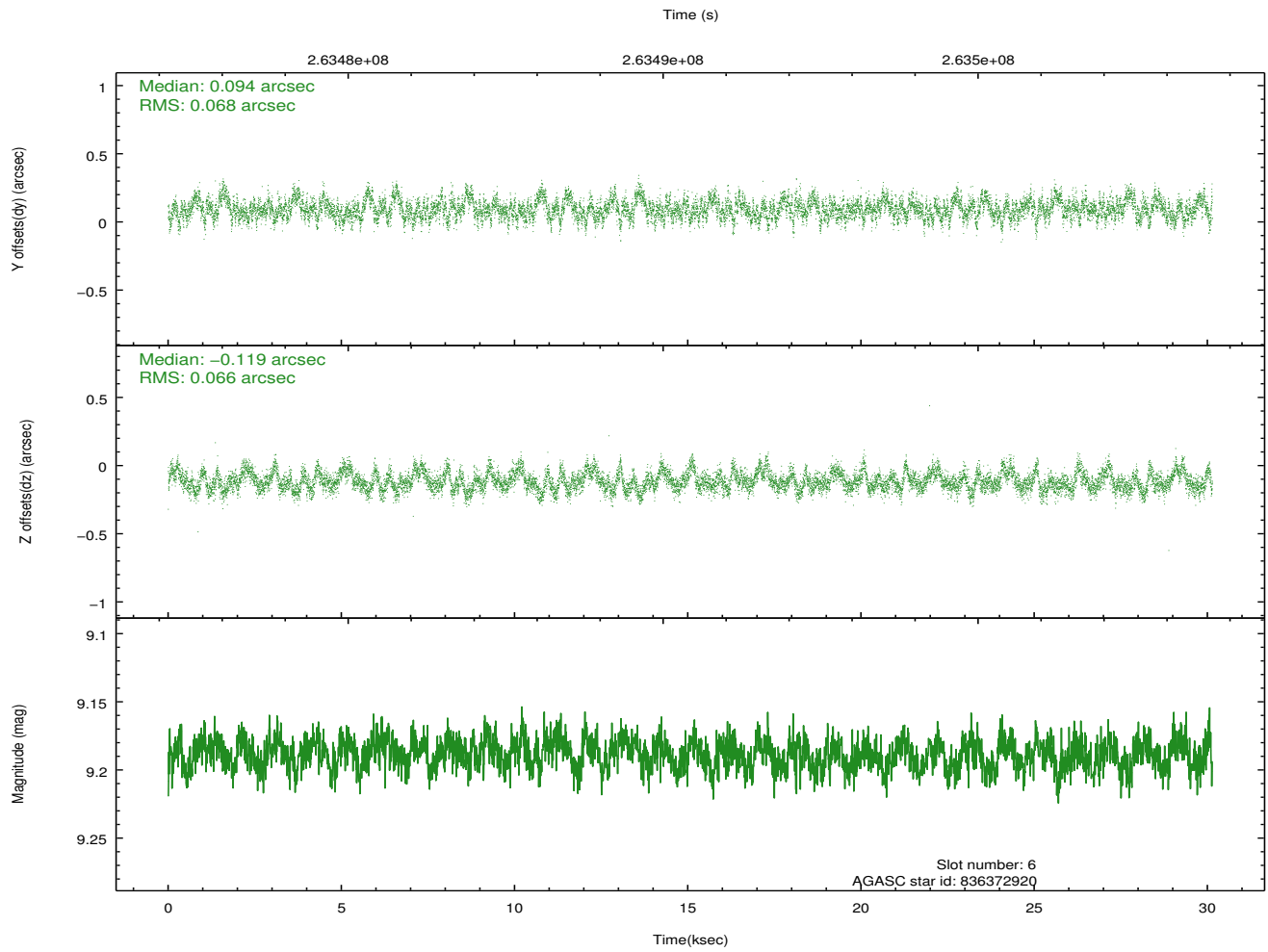
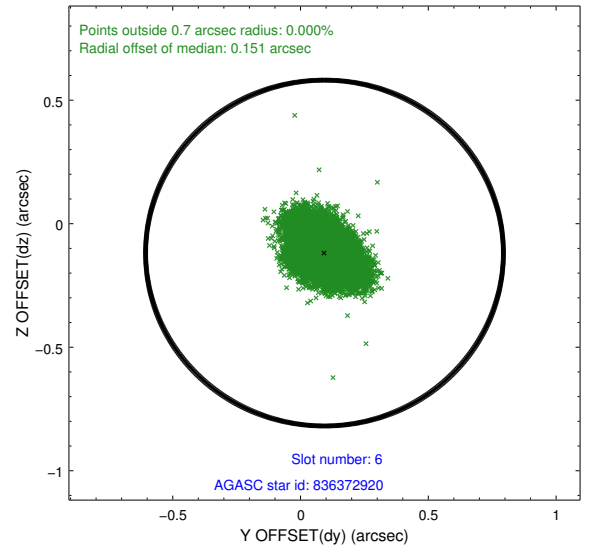
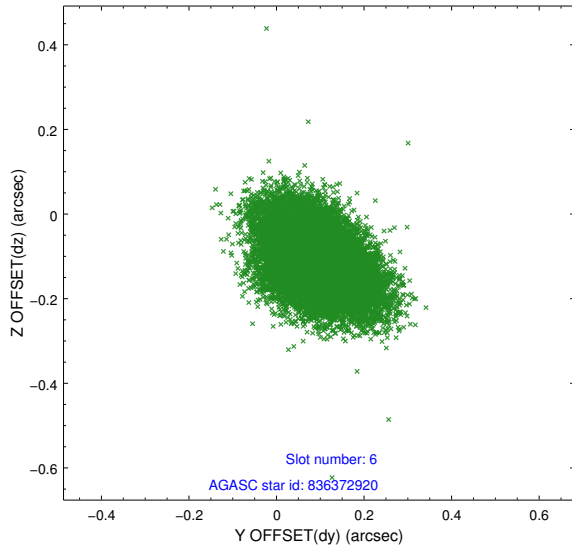
2.4.2 Slot 4



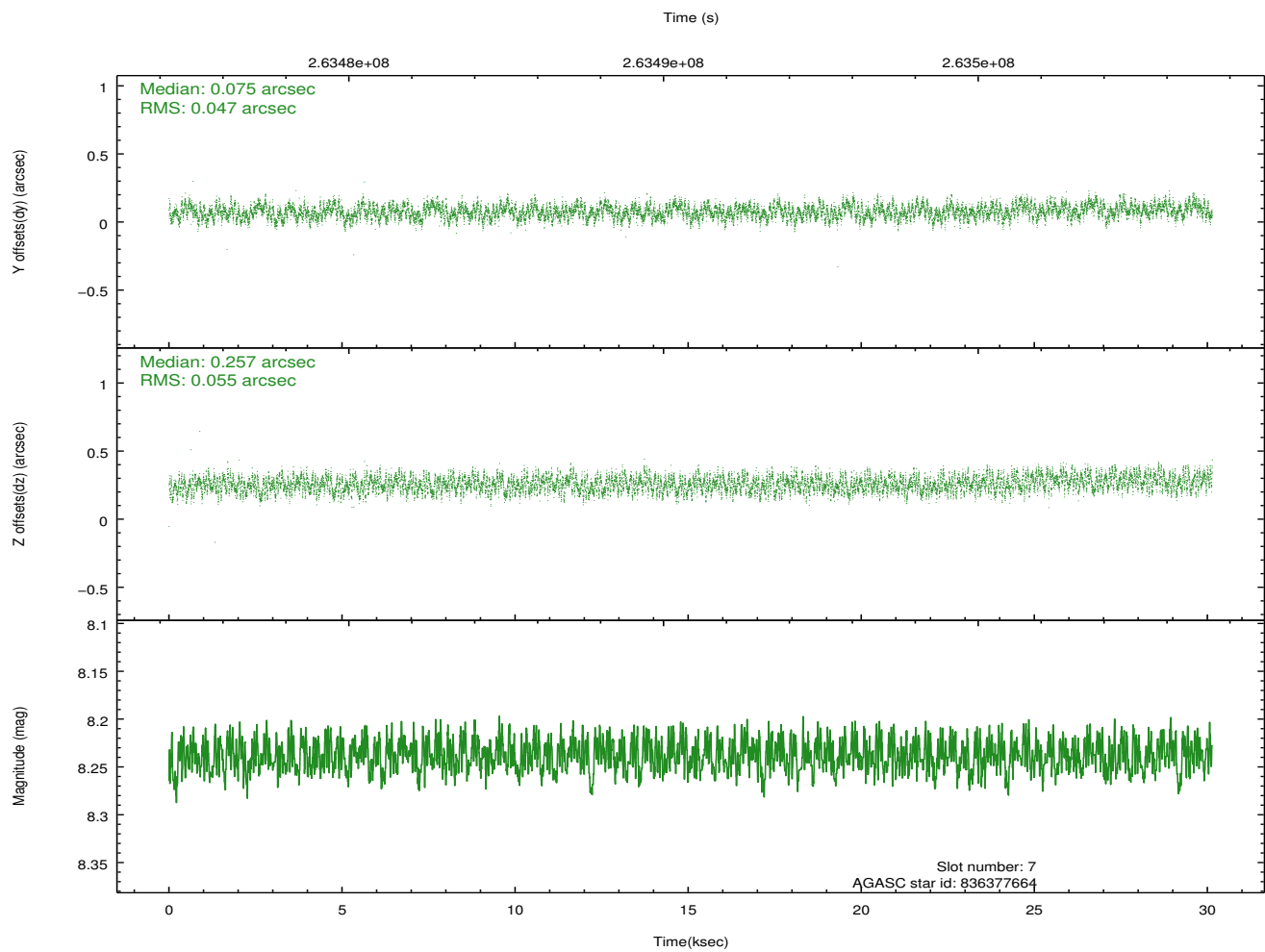
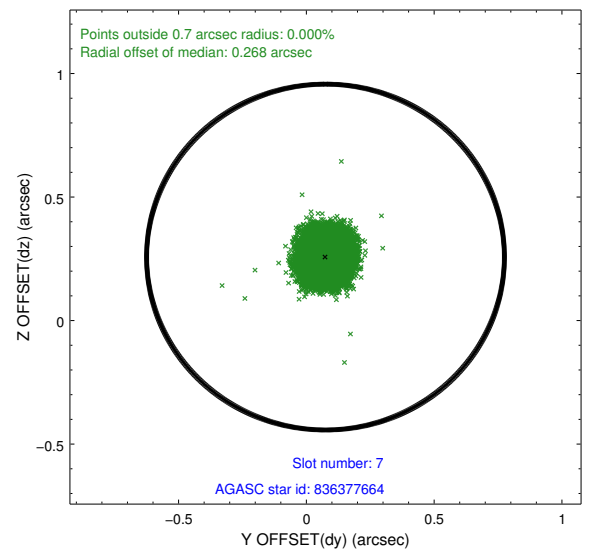
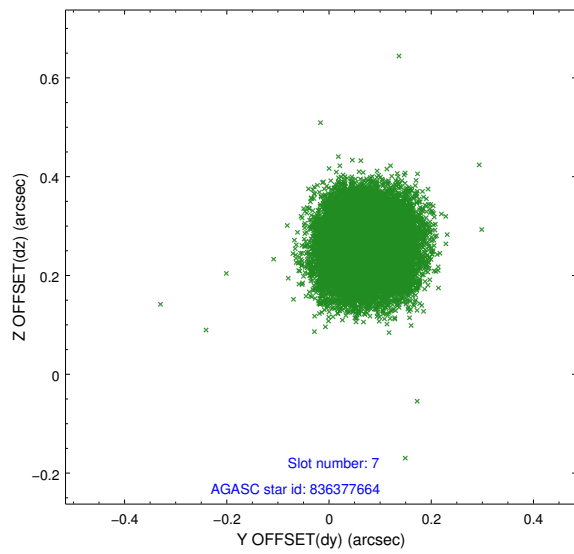
2.4.3 Slot 5



2.4.4 Slot 6

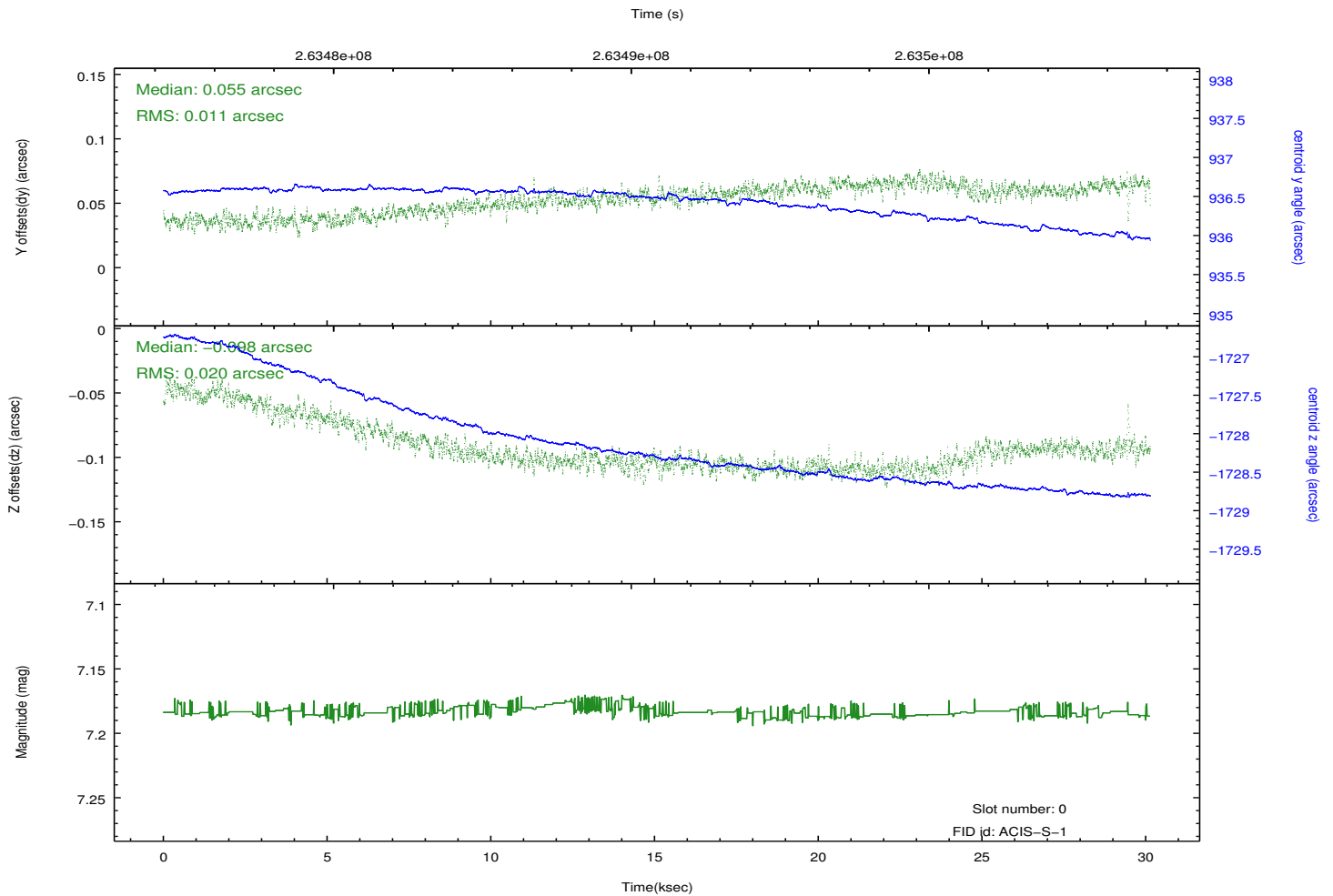
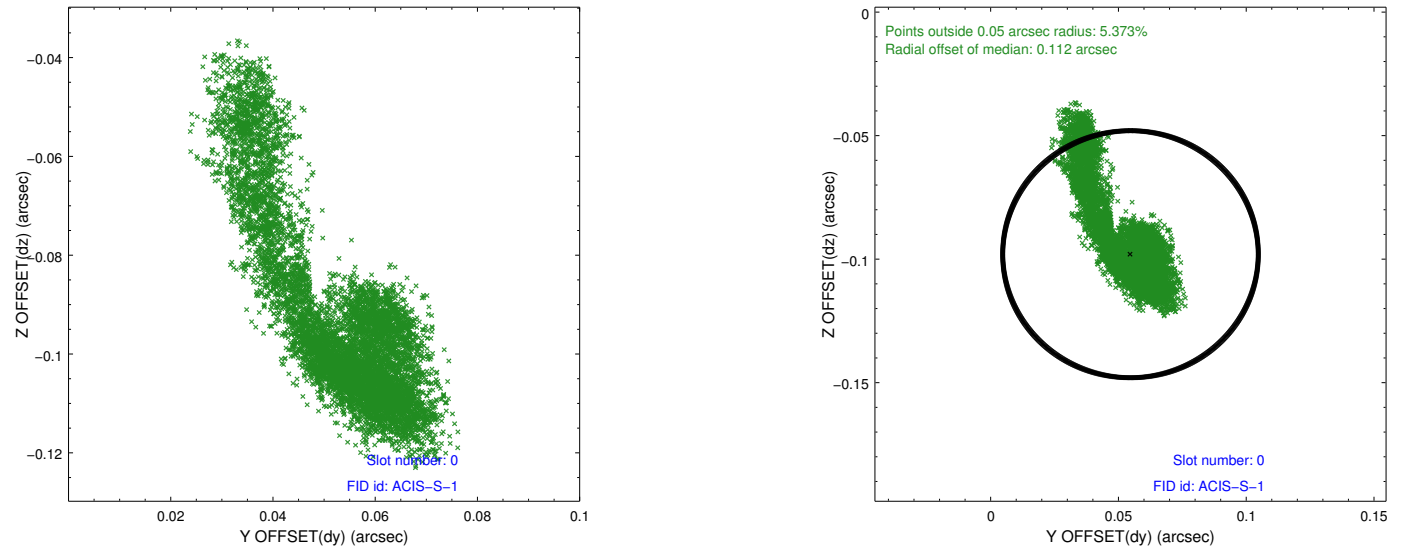


2.4.5 Slot 7

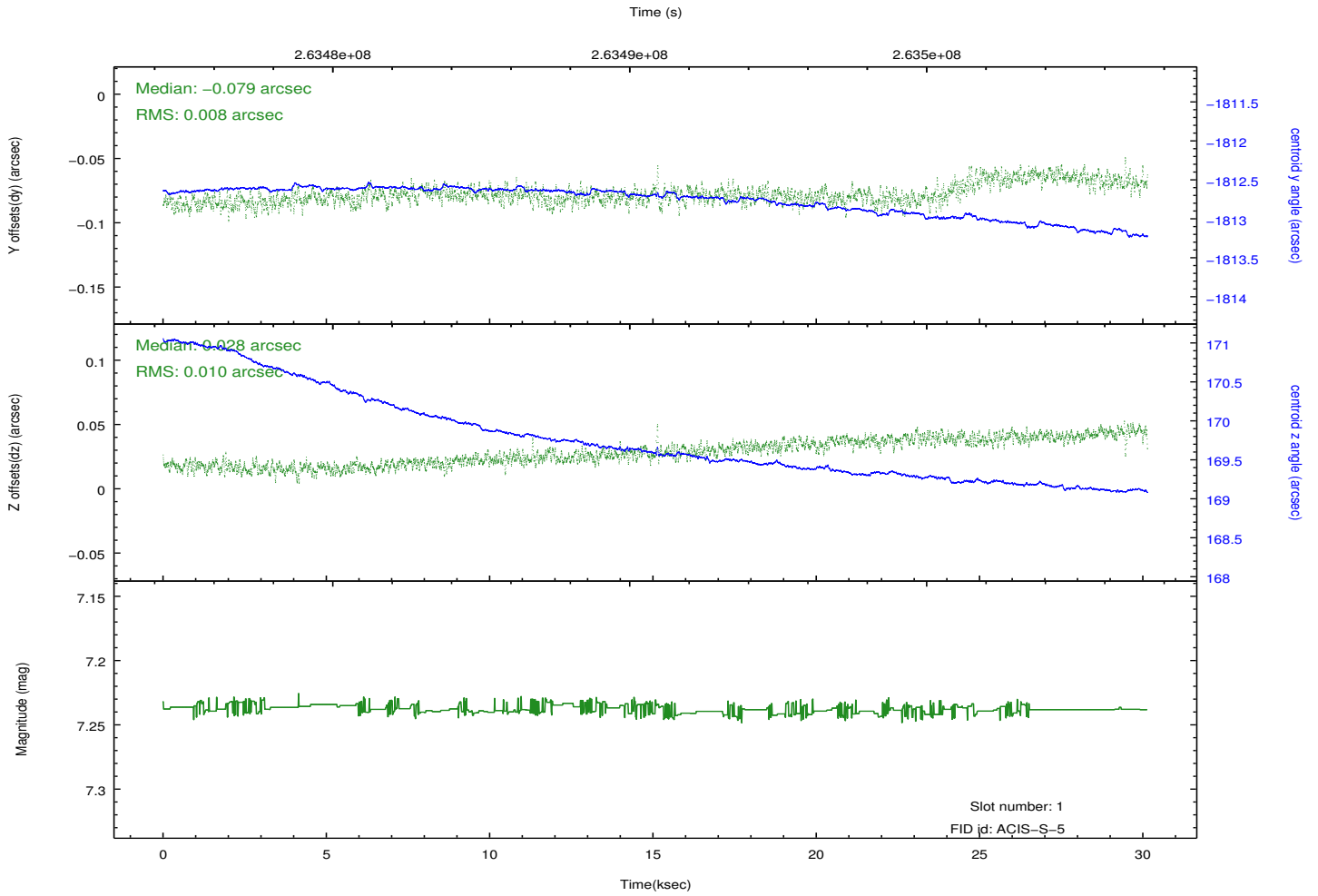
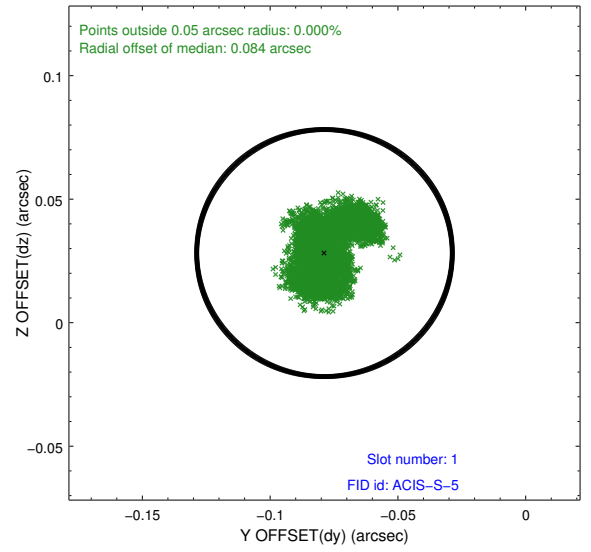
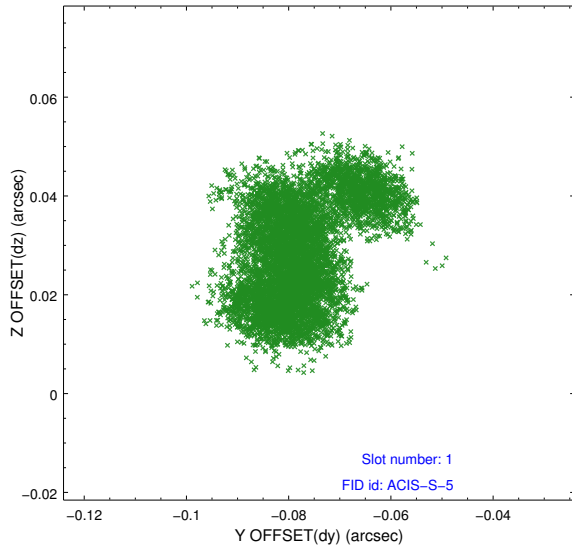


2.5 FID Slots

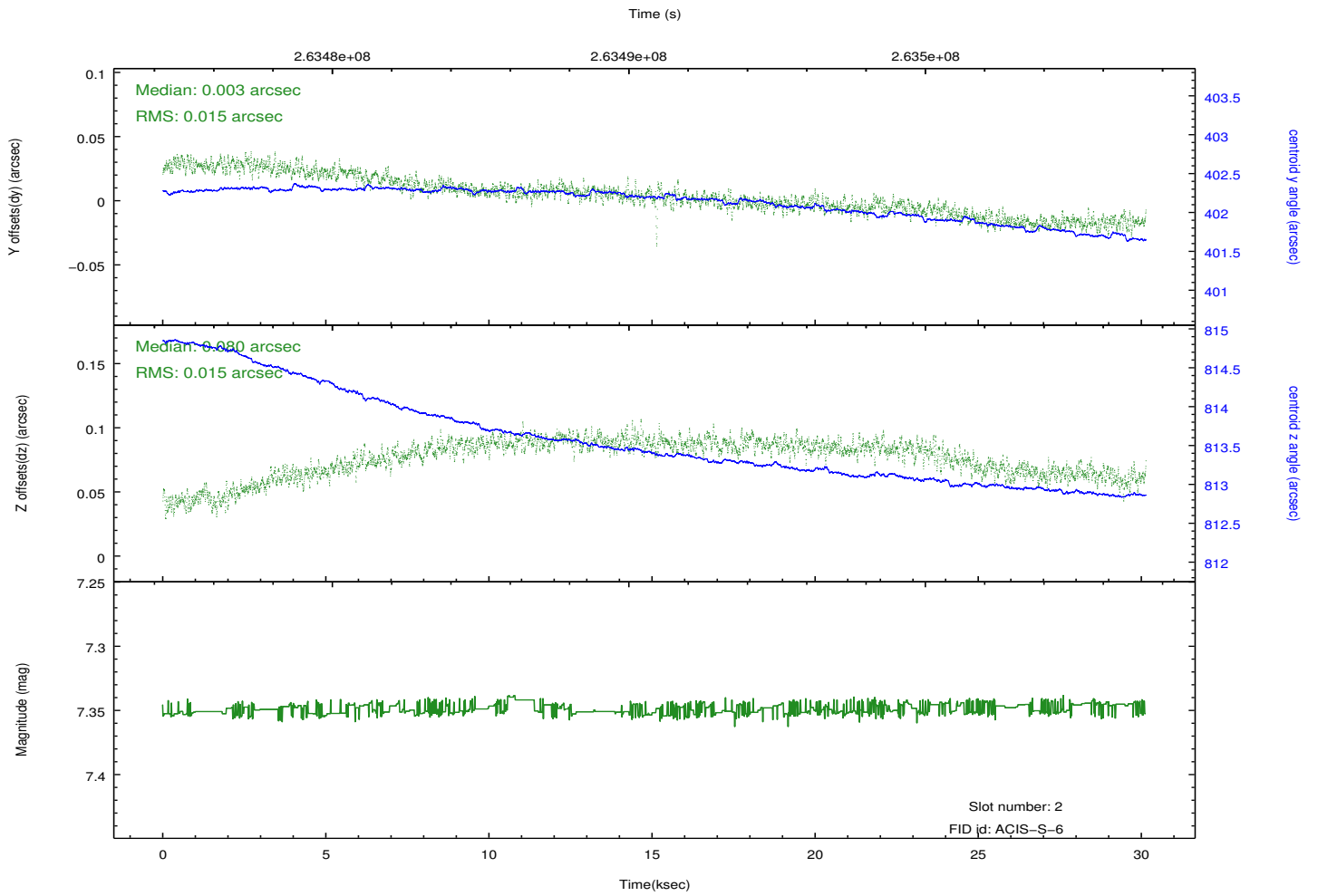
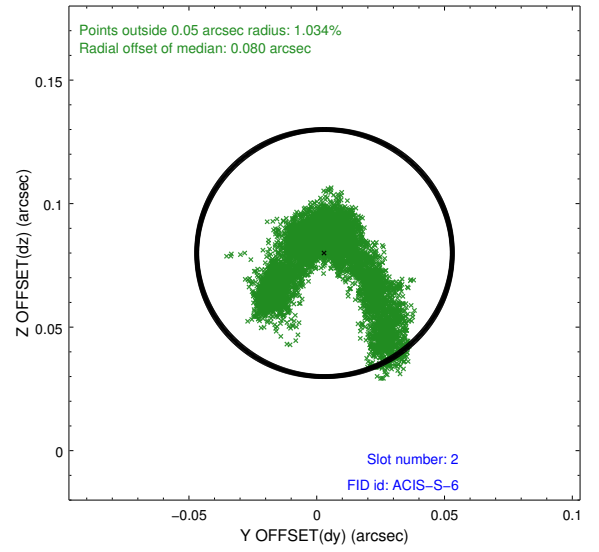
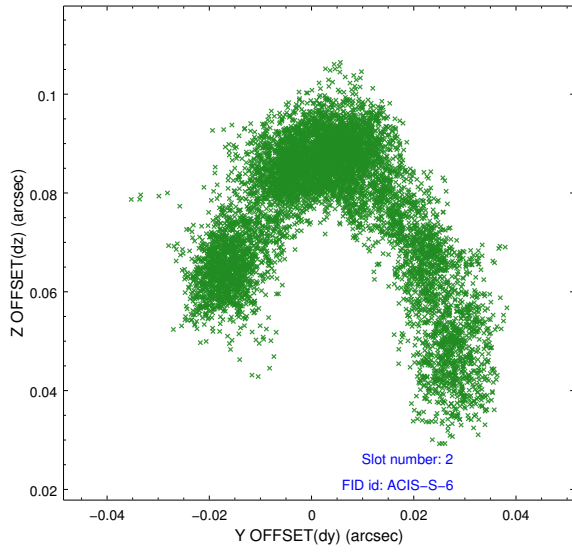
2.5.1 Slot 0



2.5.2 Slot 1



2.5.3 Slot 2



A Summary

A.1 Status

V&V Scientist	Jen Lauer
V&V Date (YYYY-MM-DD)	2012.04.02
V&V Edition	1
V&V Disposition and Status	OK
V&V Charge Time	30.1319999

A.2 Comments