

V&V Reference Report

L2 ASCDS Version : 8.4.3

Observation 6903 - L2 Version 2
Chandra X-Ray Center

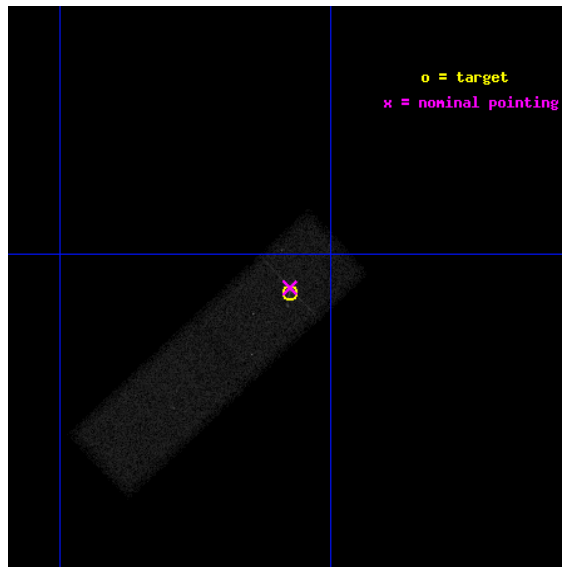
L2 Processing Date : Mar 29 2012

Contents

1	Front	2
2	OBI	3
2.1	OBI	3
2.1.1	Images	3
2.1.2	Bias	3
2.1.3	Parameters	4
2.1.4	Events	4
2.2	Compared Parameters	5
2.3	Aspect	6
2.4	Star Slots	9
2.4.1	Slot 3	9
2.4.2	Slot 4	10
2.4.3	Slot 5	11
2.4.4	Slot 6	12
2.4.5	Slot 7	13
2.5	FID Slots	14
2.5.1	Slot 0	14
2.5.2	Slot 1	15
2.5.3	Slot 2	16
A	Summary	17
A.1	Status	17
A.2	Comments	17

1 Front

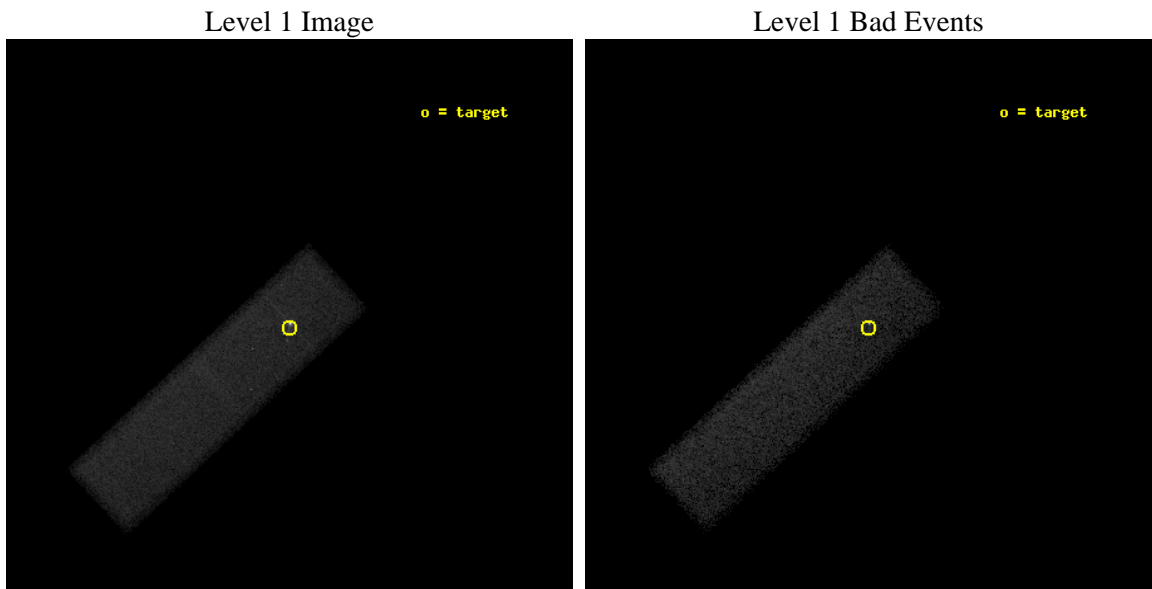
seq_num	701320	Sequence number
obs_id	6903	Observation id
title	The Long X-ray Jet of Quasar 4C19.44	Proposal title
observer	Dr. Daniel Harris	Principal investigator
object	4C19.44	Source name
dtcycle	0	
cycle	P	events from which exps? Prim/Second/Both
ra_targ	209.26875	Observer's specified target RA [deg]
dec_targ	19.316944	Observer's specified target Dec [deg]
ra_nom	209.26898261719	Nominal RA [deg]
dec_nom	19.31901564515	Nominal Dec [deg]
roll_nom	137.15652464188	Nominal Roll [deg]
revision	2	Processing version of data
ontime	45916.000684202	Sum of GTIs [s]
liveltime	43675.450094361	Livetime [s]
ontime7	45916.000684202	Sum of GTIs [s]
l2events	90159	Number of level 2 events



2 OBI

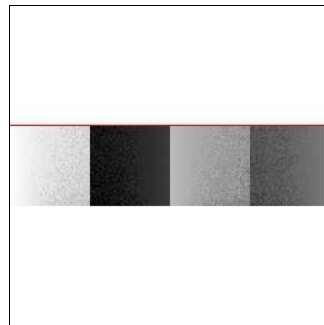
2.1 OBI

2.1.1 Images



2.1.2 Bias

Chip 7



2.1.3 Parameters

obi_num	1	Obi number	sched_exp_time	46000.000000	[s] Scheduled observation exposure time
ascdsver	8.4.3	Processing system revision	ontime	45916.000684202	Sum of GTIs [s]
caldbver	4.4.8	 	ontime7	45916.000684202	Sum of GTIs [s]
date	2012-03-29T13:16:14	Date and time of file creation	l1events	176629	Number of level 1 events
revision	2	Processing version of data			

2.1.4 Events

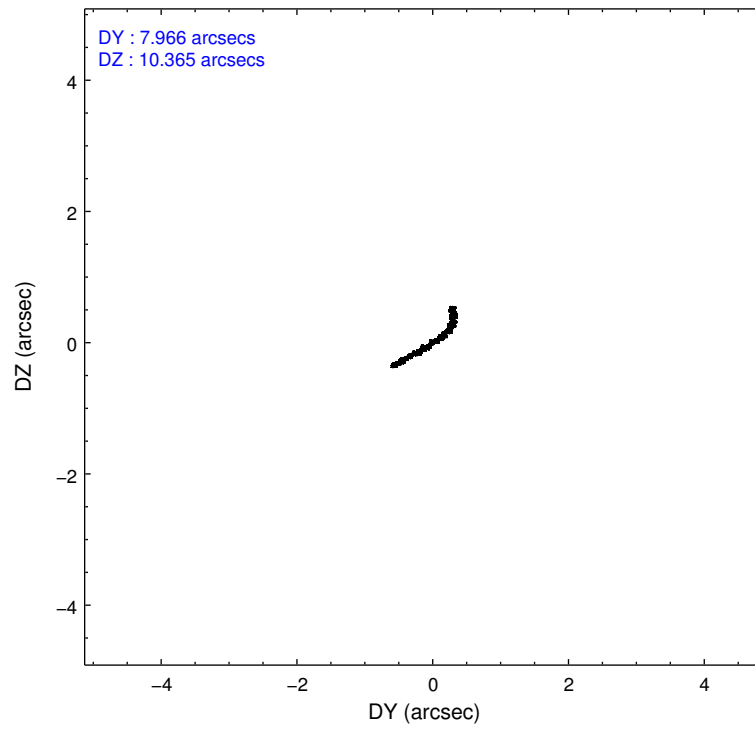
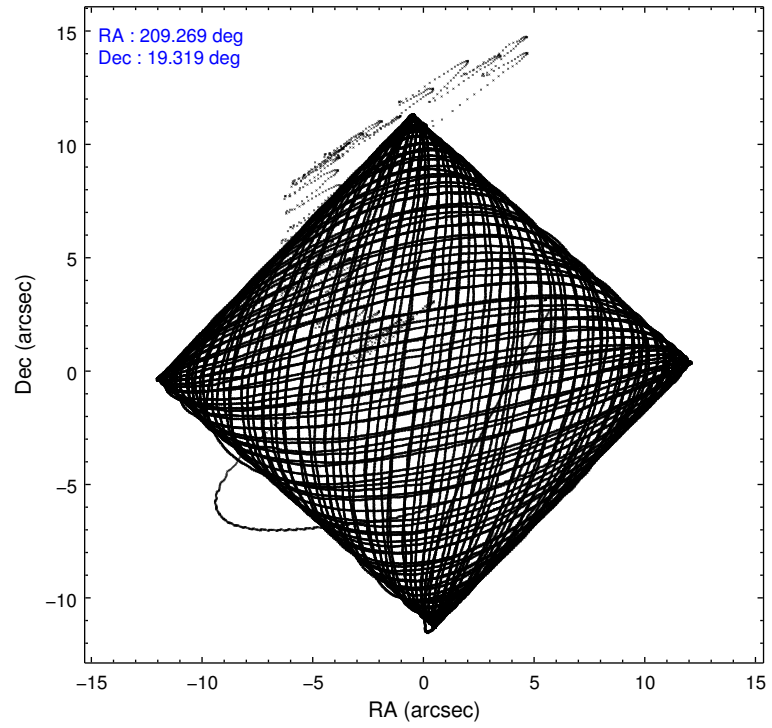
	ccd 7
level 1 events	176629
rejected events	84411
rejected %	47%

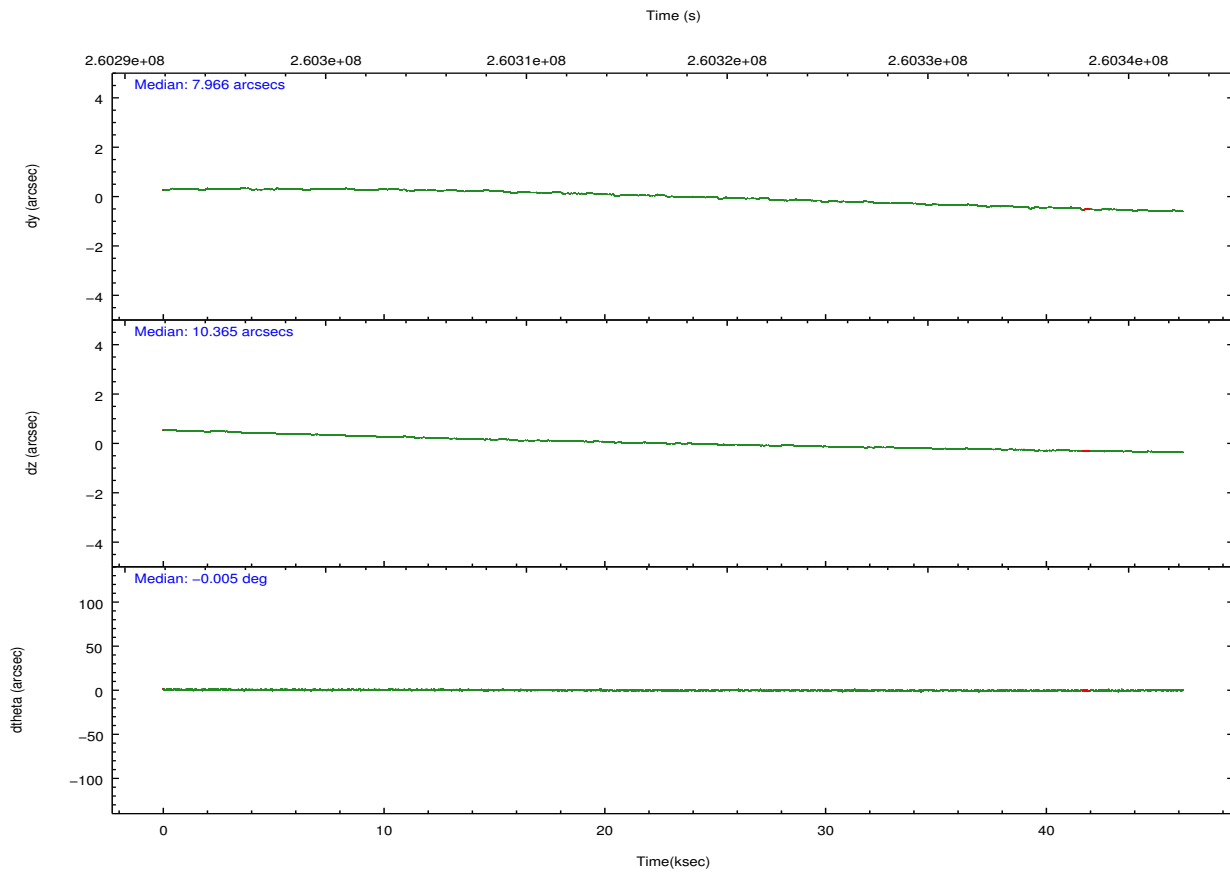
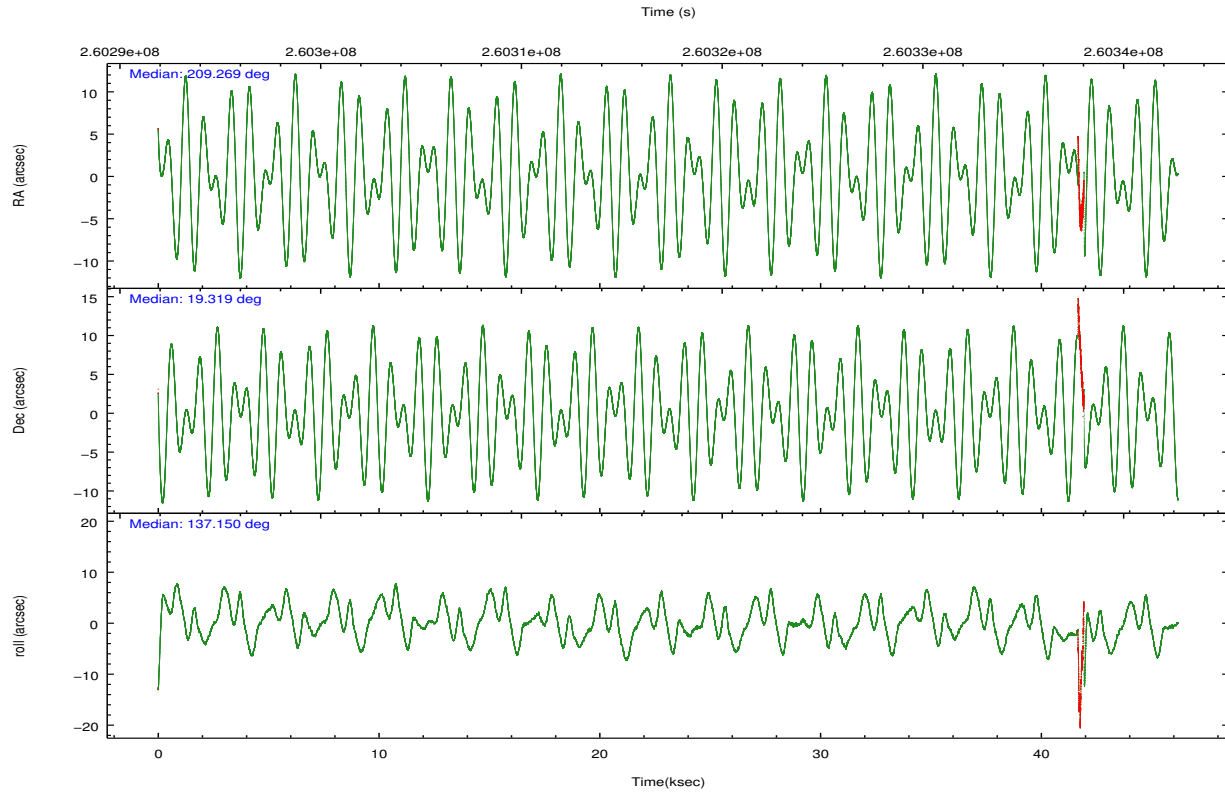
	ccd 7
grade 0 events	13497
	7%
grade 1 events	470
	0%
grade 2 events	20186
	11%
grade 3 events	10396
	5%
grade 4 events	10125
	5%
grade 5 events	15305
	8%
grade 6 events	39416
	22%
grade 7 events	67234
	38%

2.2 Compared Parameters

Parameter	Planned	Actual	Parameter	Planned	Actual
Instrument	ACIS	ACIS	Obspar format version number	7	7
Detector	ACIS-7	ACIS-7	Obspar file type	PREDICTED	ACTUAL
Grating	NONE	NONE	Obspar update status	NONE	UPDATED
Data mode	FAINT	FAINT	Number of optional ACIS chips dropped	0	0
Observation mode	POINTING	POINTING	On-chip summing requested	N	N
[deg] Pointing RA	209.297211	209.2689826171865	Subarray requested	CUSTOM	1/4
[deg] Pointing Dec	19.313314	19.31901564515004	Subarray start row	384	385
[deg] Pointing Roll	136.990586	137.1565246418785	Subarray row count	256	256
[mm] SIM focus pos	-0.684267	-0.6828225247311905	Alternating exposures requested	N	N
[mm] SIM defocus	0	0.001444936568705701	[s] Primary exposure time	0.000000	0.8
[mm] SIM translation stage pos	-190.132523	-190.1400660498719			
[mm] SIM translation stage offset	0	0.00754346686406393			
[s] Observation start time (MET)	260294393.184000	260293424.71719			
Observation start date	2006-04-01T15:58:48	2006-04-01T15:43:44			
[s] Observation end time (MET)	260340393.184000	260341089.2694			
Observation end date	2006-04-02T04:45:28	2006-04-02T04:58:09			
Read mode	TIMED	TIMED			

2.3 Aspect



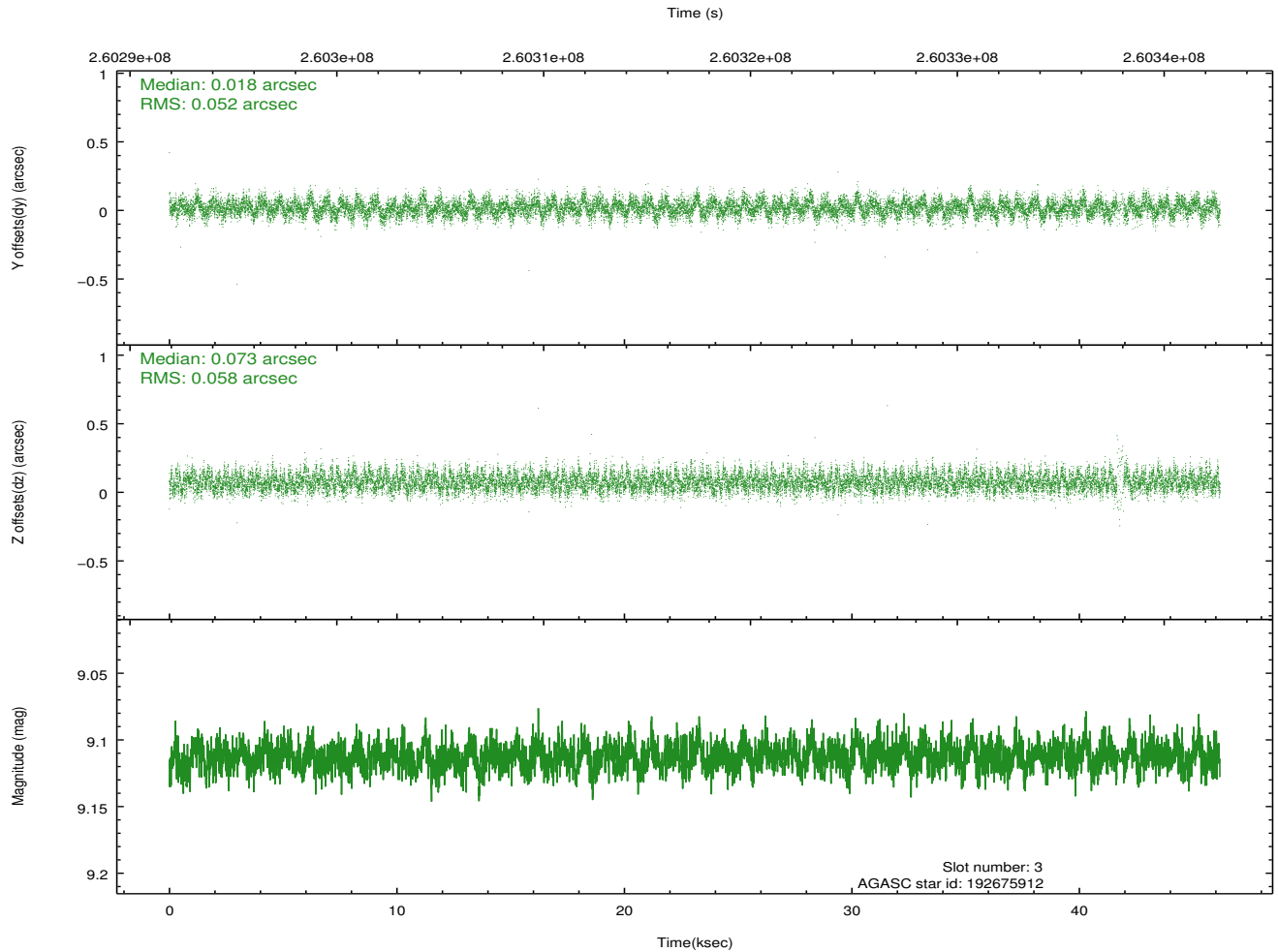
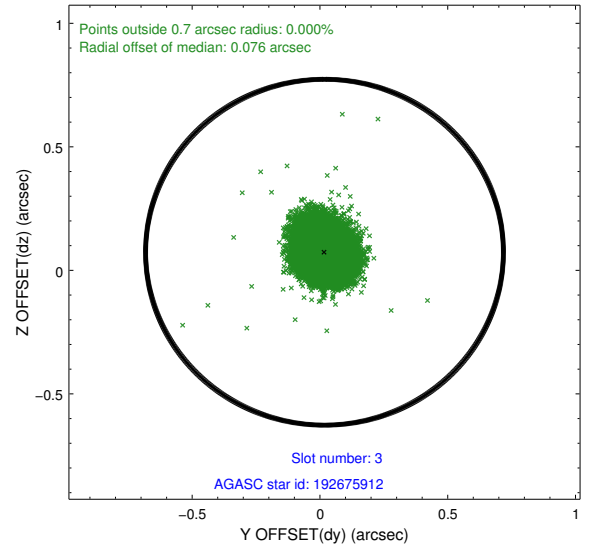
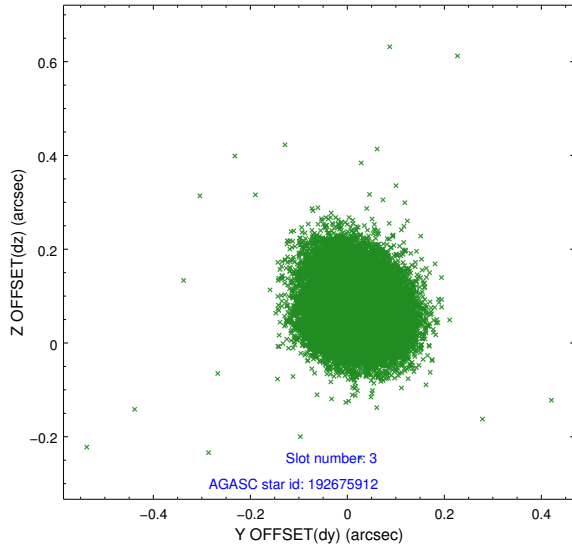


Slot Statistics

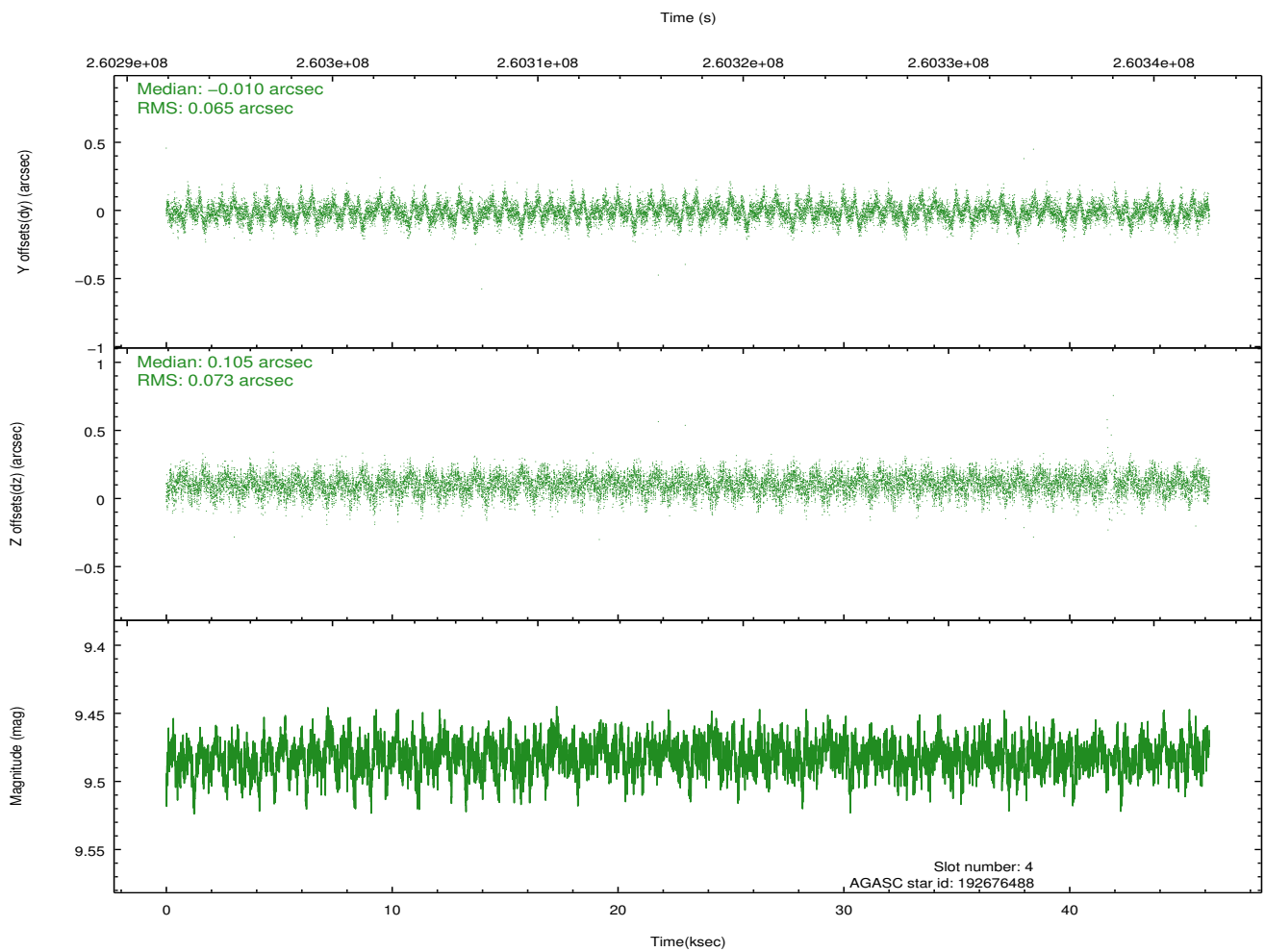
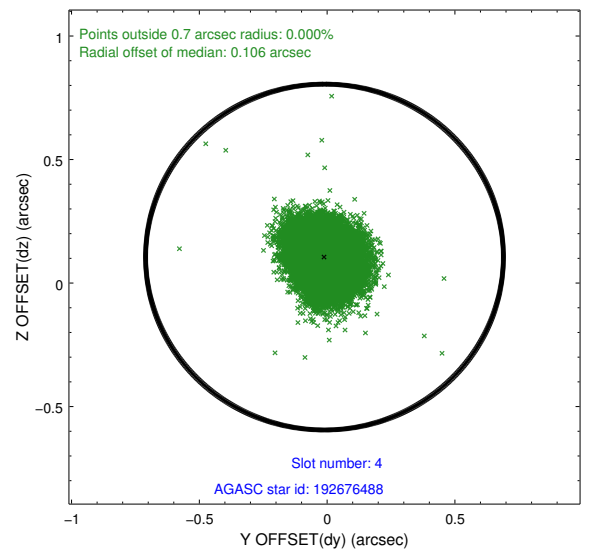
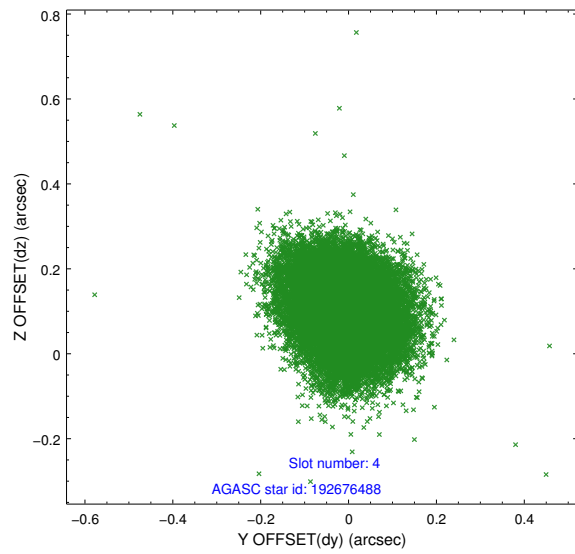
slot	status	id	mag	n_pts	med_dy	med_dz	dr1	dr2	ra	dec	mean_y	mean_z
0	FID	ACIS-S-2	7.11	11266	-0.080	-0.057	0.009	0.023	0.000000	0.000000	-760.76	-1731.72
1	FID	ACIS-S-4	7.21	11267	0.086	0.035	0.009	0.015	0.000000	0.000000	2152.66	176.90
2	FID	ACIS-S-6	7.35	11267	-0.034	0.028	0.009	0.015	0.000000	0.000000	401.23	814.26
3	GUIDE	192675912	9.11	22413	0.018	0.073	0.083	0.132	209.556745	19.286625	-709.15	-530.70
4	GUIDE	192676488	9.48	22403	-0.010	0.105	0.104	0.169	209.700751	19.421069	-735.87	-1219.02
5	GUIDE	192677632	9.20	22415	0.080	-0.023	0.082	0.135	209.730671	18.841125	-2237.85	234.63
6	GUIDE	192678056	9.47	22401	-0.062	-0.033	0.127	0.216	209.629569	19.594794	-132.24	-1510.33
7	GUIDE	192680448	8.09	22419	-0.027	-0.112	0.066	0.106	209.583470	18.944304	-1618.20	305.98

2.4 Star Slots

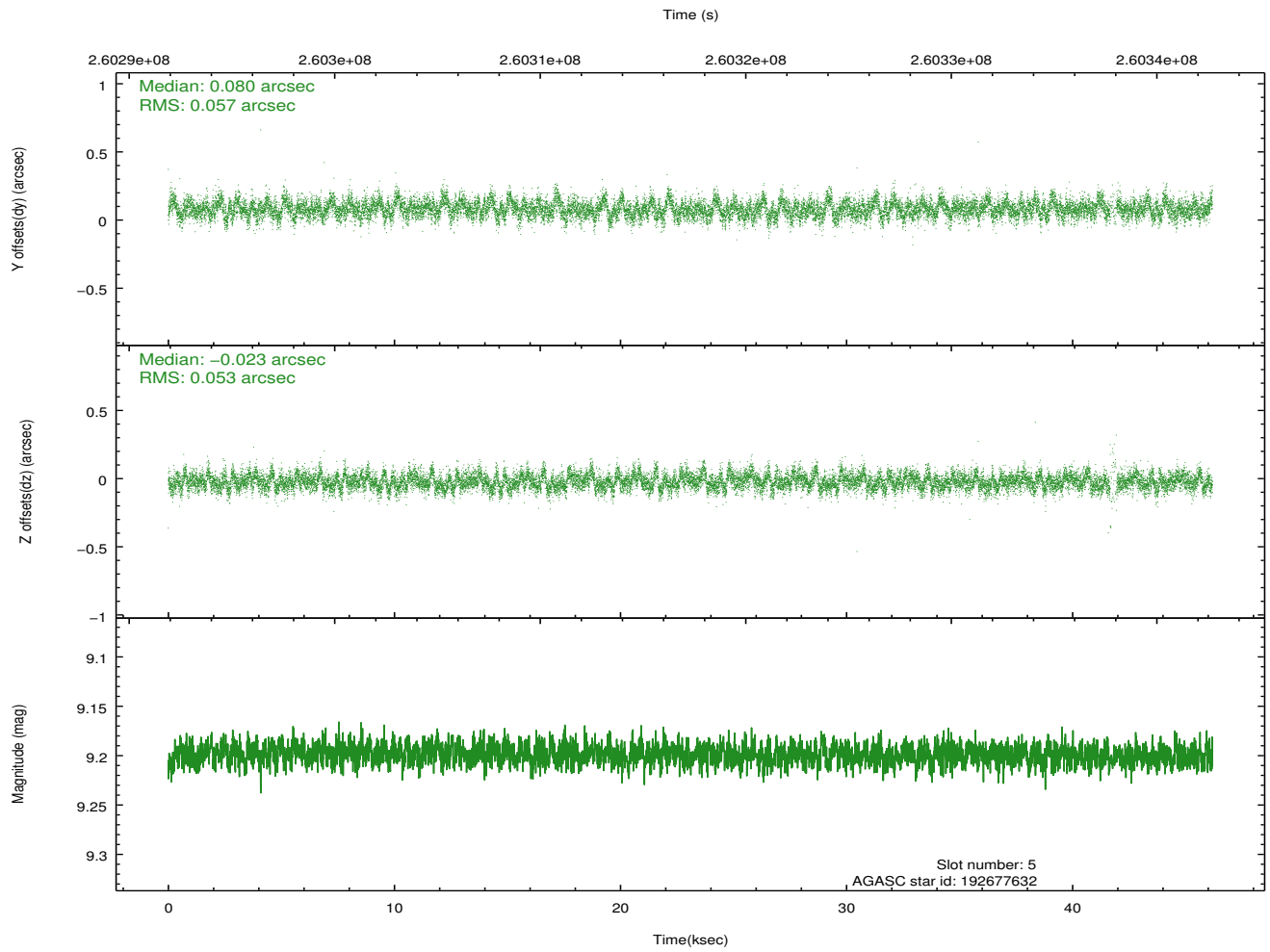
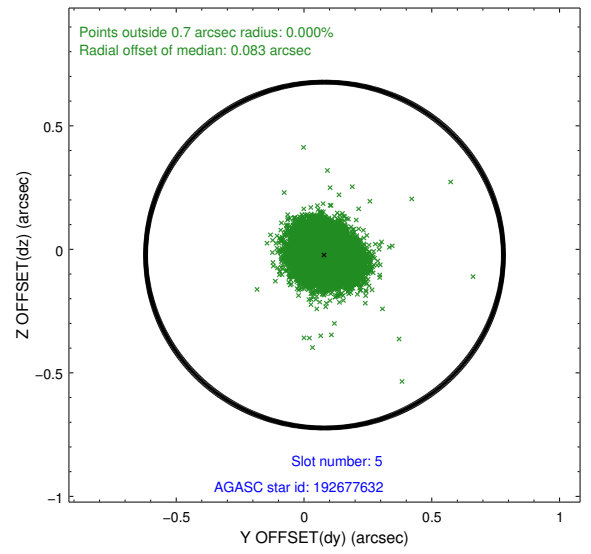
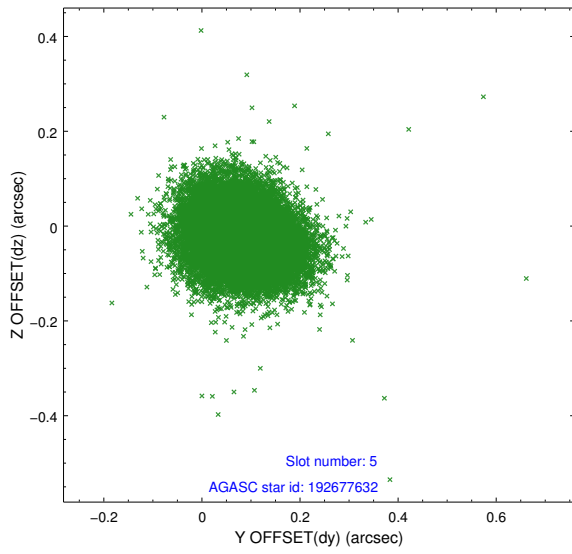
2.4.1 Slot 3



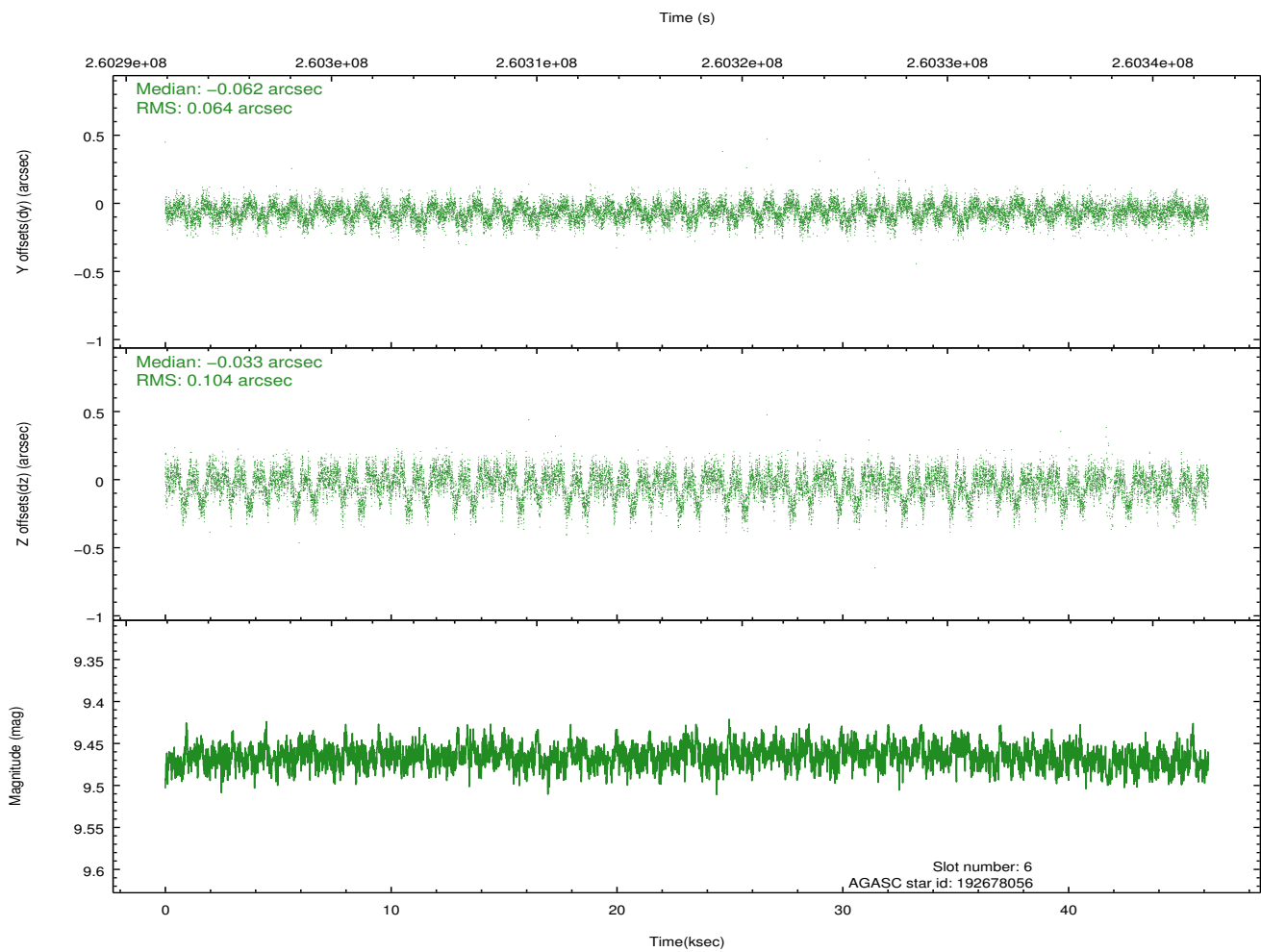
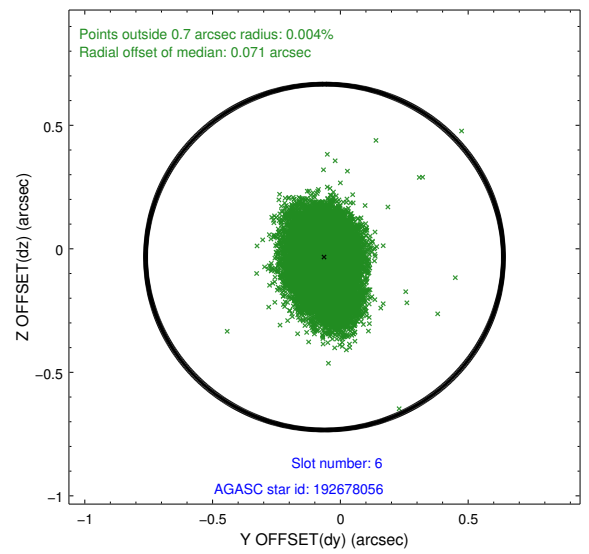
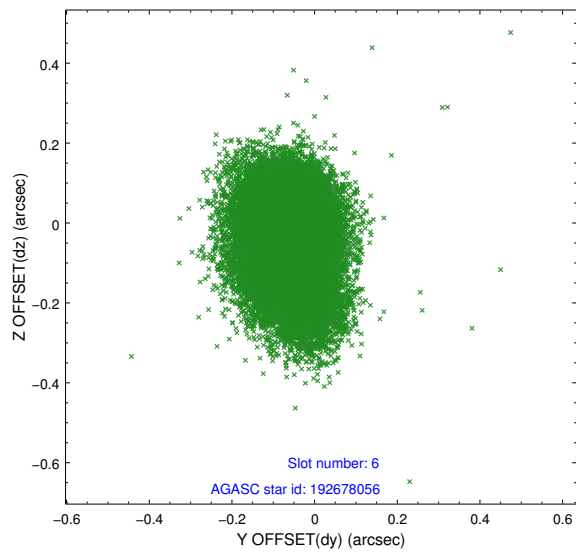
2.4.2 Slot 4



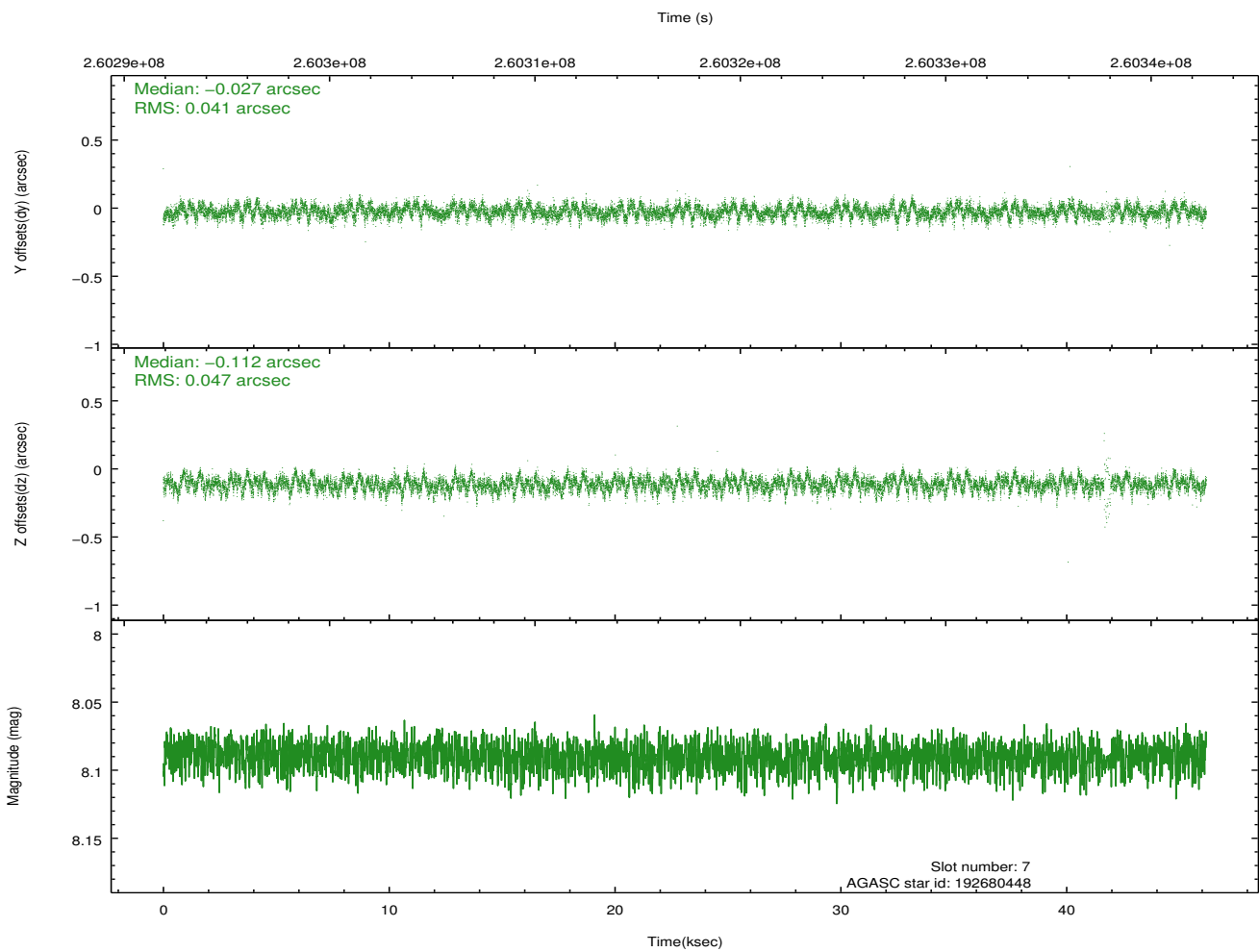
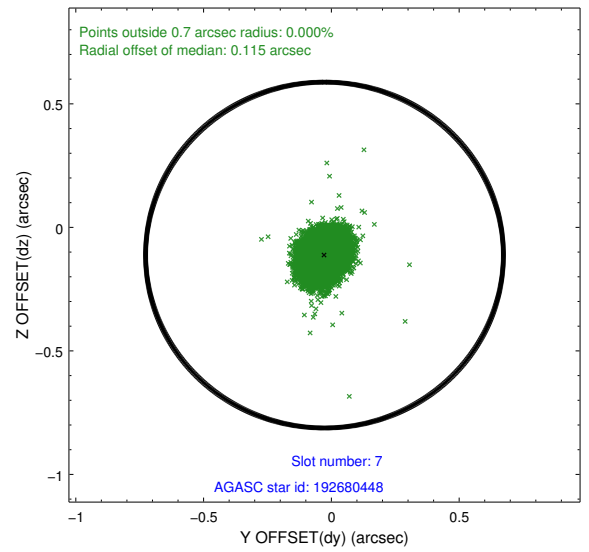
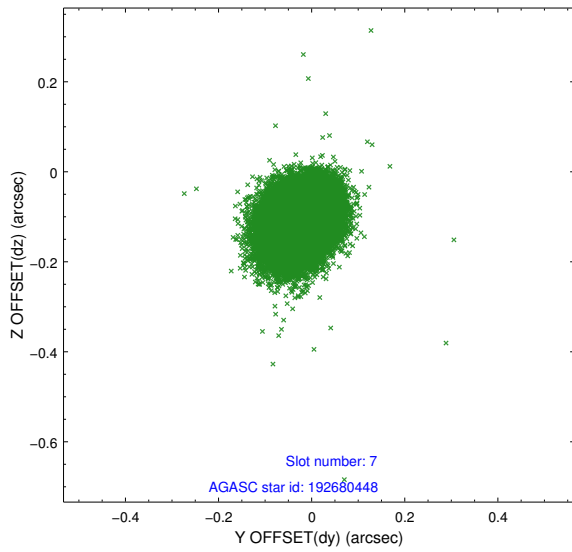
2.4.3 Slot 5



2.4.4 Slot 6

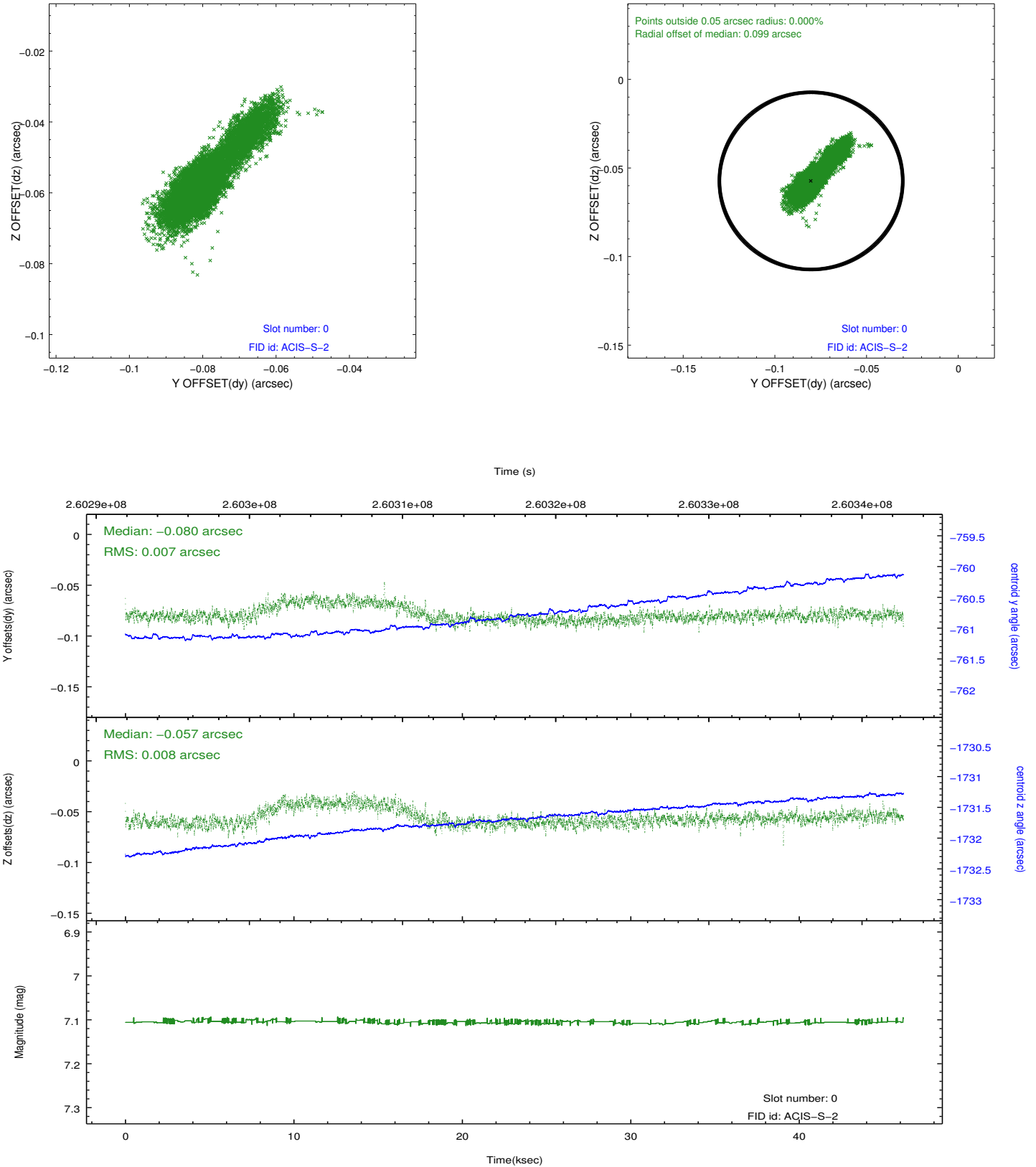


2.4.5 Slot 7

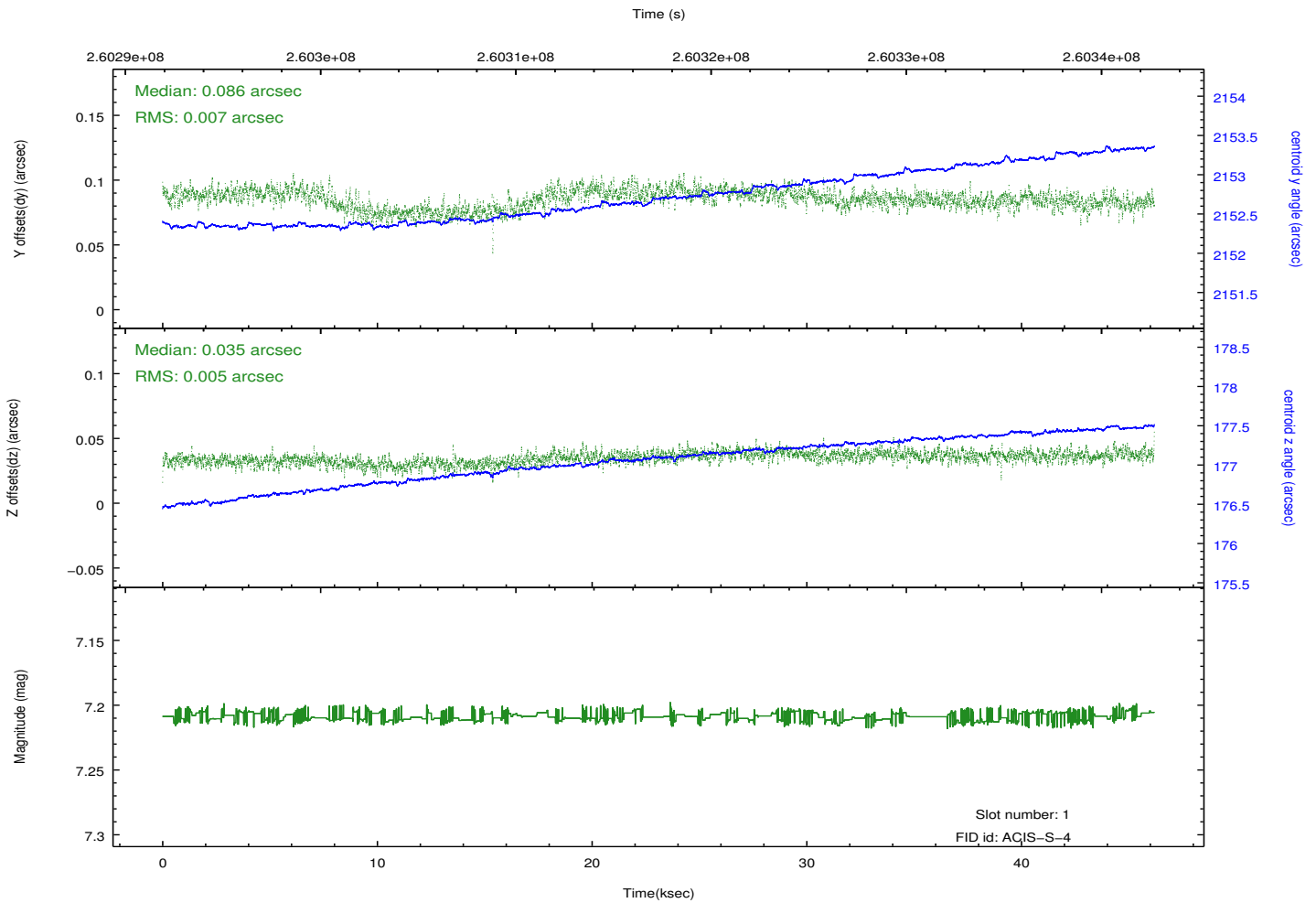
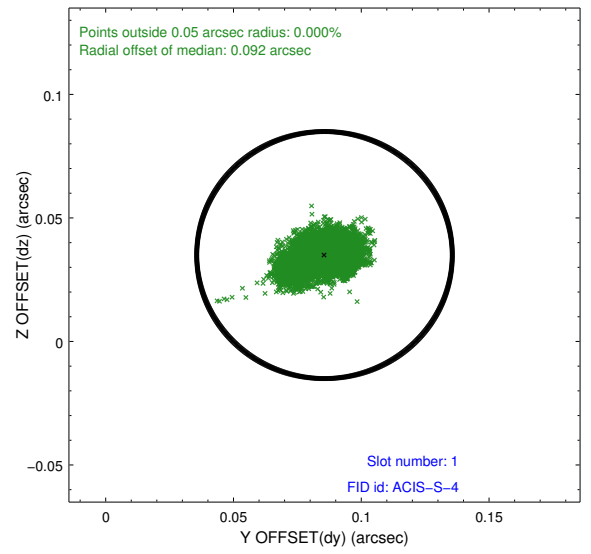
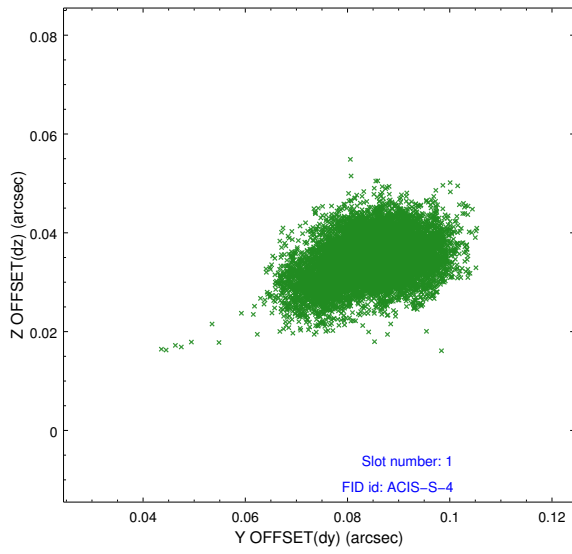


2.5 FID Slots

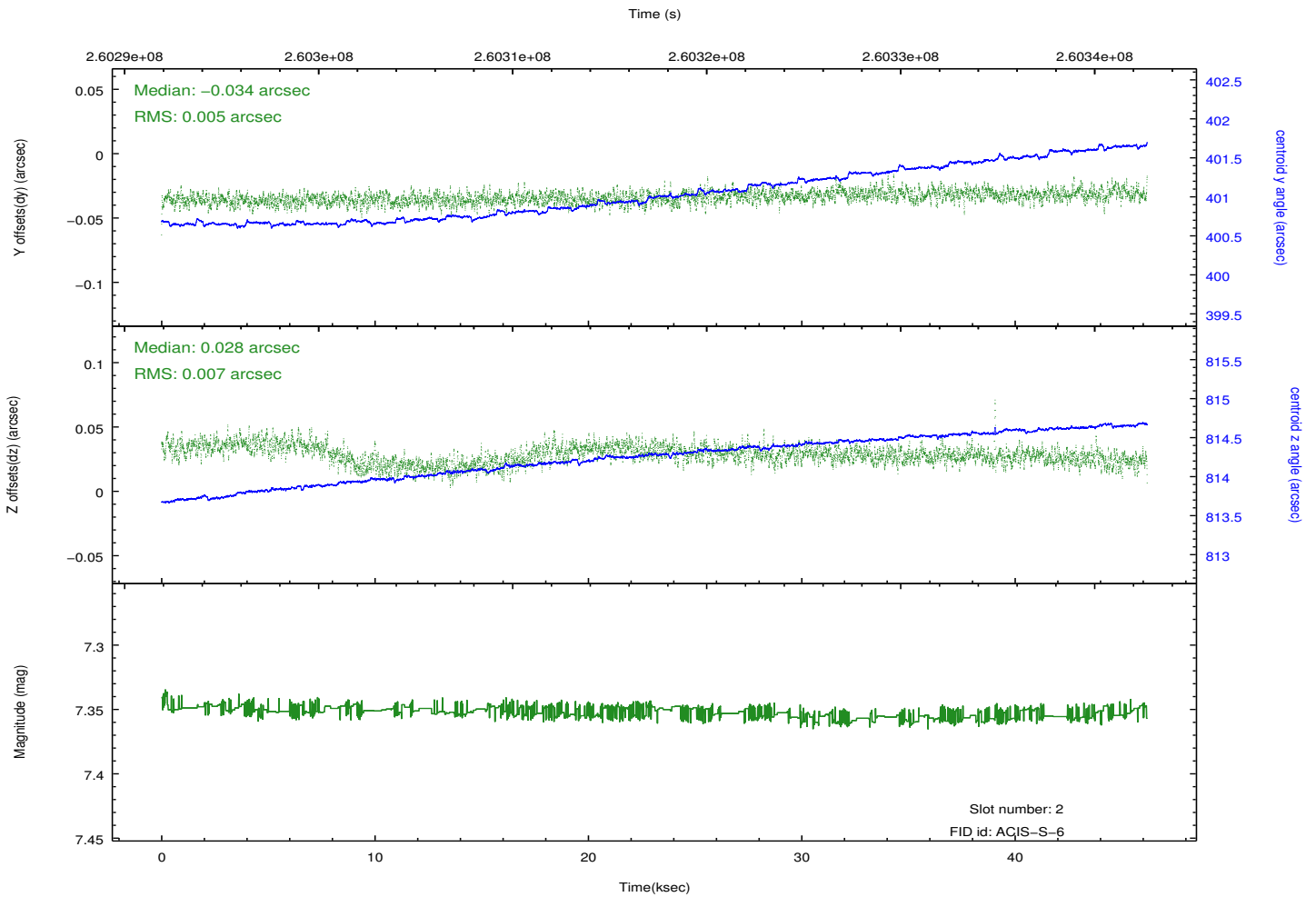
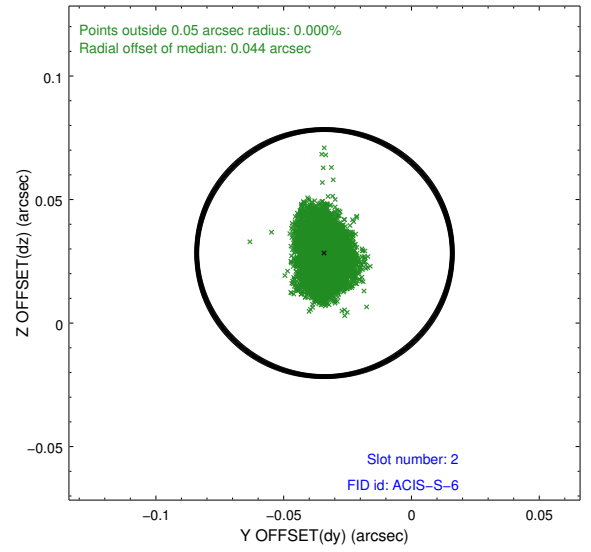
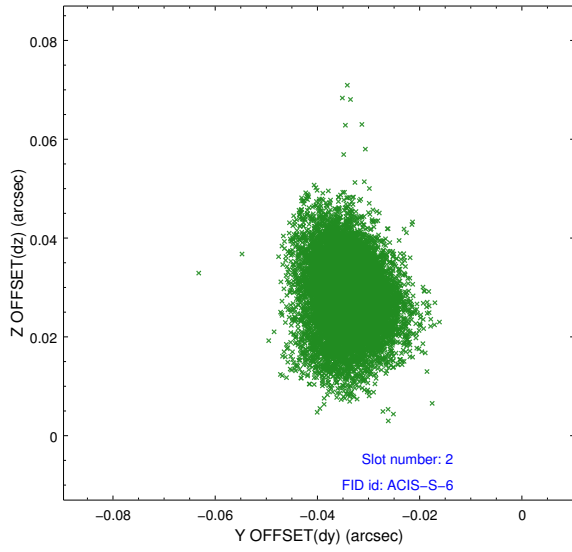
2.5.1 Slot 0



2.5.2 Slot 1



2.5.3 Slot 2



A Summary

A.1 Status

V&V Scientist	Jen Lauer
V&V Date (YYYY-MM-DD)	2012.03.30
V&V Edition	1
V&V Disposition and Status	OK
V&V Charge Time	46.1872006

A.2 Comments

Charge time for this ObsId remains at previous value of 46.1872006 ks although with the current processing the charge time would have been 45.92 ksec.

=====

Momentum dump occurred near the end of this observation. During the momentum dump there were perturbations in the guide star centroiding, resulting in a short period of reduced quality of the aspect solution.