

# V&V Reference Report

## L2 ASCDS Version : 8.4.3

Observation 6923 - L2 Version 3  
Chandra X-Ray Center

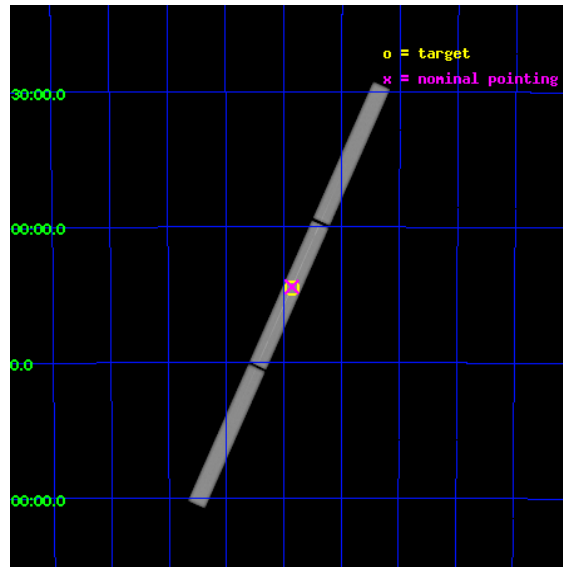
L2 Processing Date : Aug 11 2012

## Contents

<b>1</b>	<b>Front</b>	<b>2</b>
<b>2</b>	<b>OBI</b>	<b>3</b>
2.1	OBI . . . . .	3
2.1.1	Images . . . . .	3
2.1.2	Parameters . . . . .	4
2.1.3	Events . . . . .	4
2.2	Compared Parameters . . . . .	5
2.3	Aspect . . . . .	6
2.4	Star Slots . . . . .	9
2.4.1	Slot 3 . . . . .	9
2.4.2	Slot 4 . . . . .	10
2.4.3	Slot 5 . . . . .	11
2.4.4	Slot 6 . . . . .	12
2.4.5	Slot 7 . . . . .	13
2.5	FID Slots . . . . .	14
2.5.1	Slot 0 . . . . .	14
2.5.2	Slot 1 . . . . .	15
2.5.3	Slot 2 . . . . .	16
<b>3</b>	<b>Gratings</b>	<b>17</b>
3.1	LETG Arm . . . . .	17
<b>A</b>	<b>Summary</b>	<b>19</b>
A.1	Status . . . . .	19
A.2	Comments . . . . .	19

# 1 Front

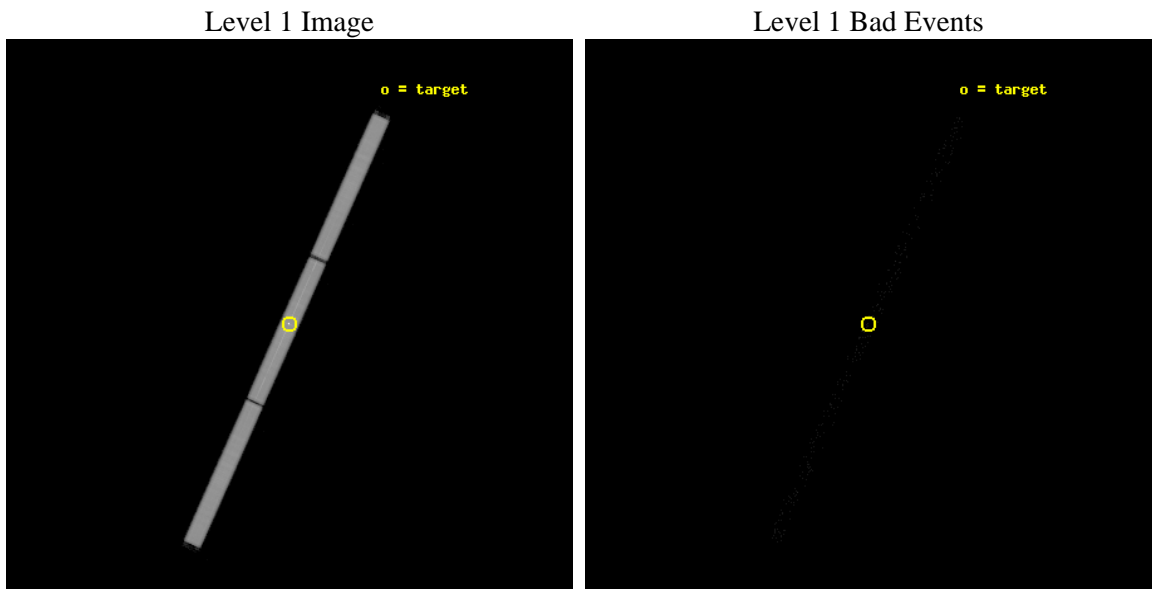
seq_num	790103	Sequence number
obs_id	6923	Observation id
title	AO7 Calibration Observations of PKS2155-304	Proposal title
observer	Dr. CXC Calibration	Principal investigator
object	PKS2155	Source name
ra_targ	329.716667	Observer's specified target RA [deg]
dec_targ	-30.225556	Observer's specified target Dec [deg]
ra_nom	329.71458741325	Nominal RA [deg]
dec_nom	-30.221270871927	Nominal Dec [deg]
roll_nom	114.05713382705	Nominal Roll [deg]
revision	3	Processing version of data
ontime	30179.332657546	[s]
livetime	29912.509747641	Ontime multiplied by DTCOR
l2events	2226388	Number of level 2 events



## 2 OBI

### 2.1 OBI

#### 2.1.1 Images



## 2.1.2 Parameters

obi_num	0	Obi number	sched_exp_time	30000.000000	[s] Scheduled observation exposure time
ascdsver	8.4.5	Processing system revision	ontime	30179.332657546	[s]
caldbver	4.5.1.1	&#160	l1events	3002990	Number of level 1 events
date	2012-08-11T07:35:54	Date and time of file creation			
revision	3	Processing version of data			

## 2.1.3 Events

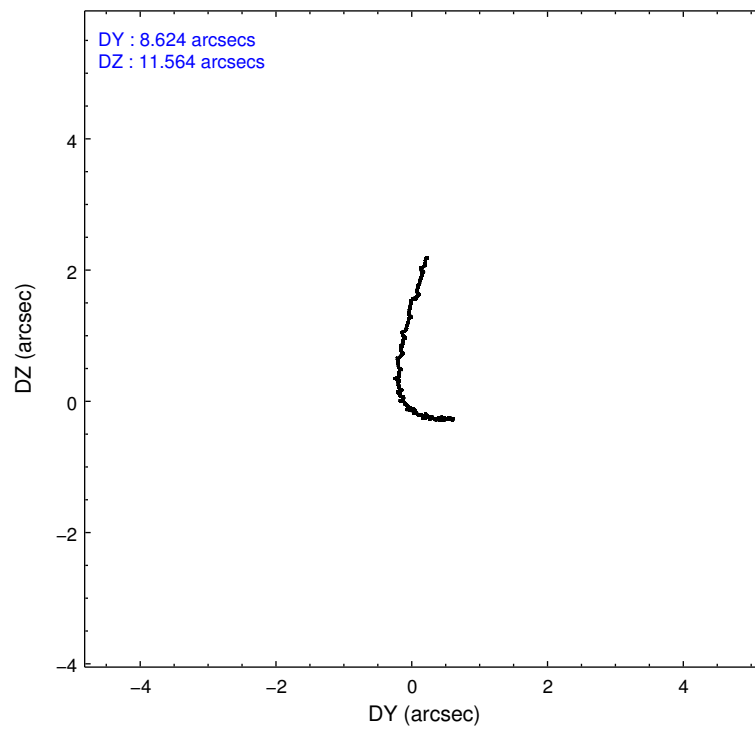
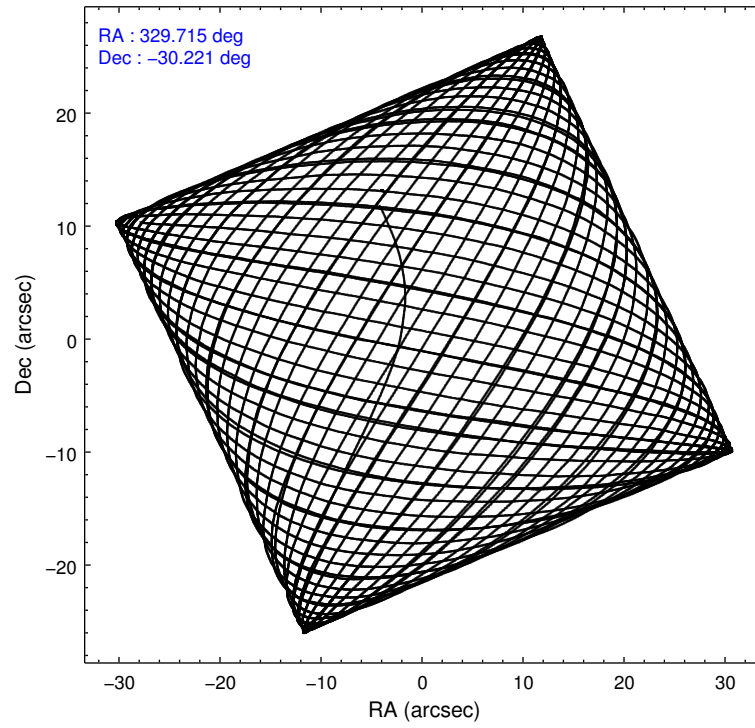
### Level 1 Events

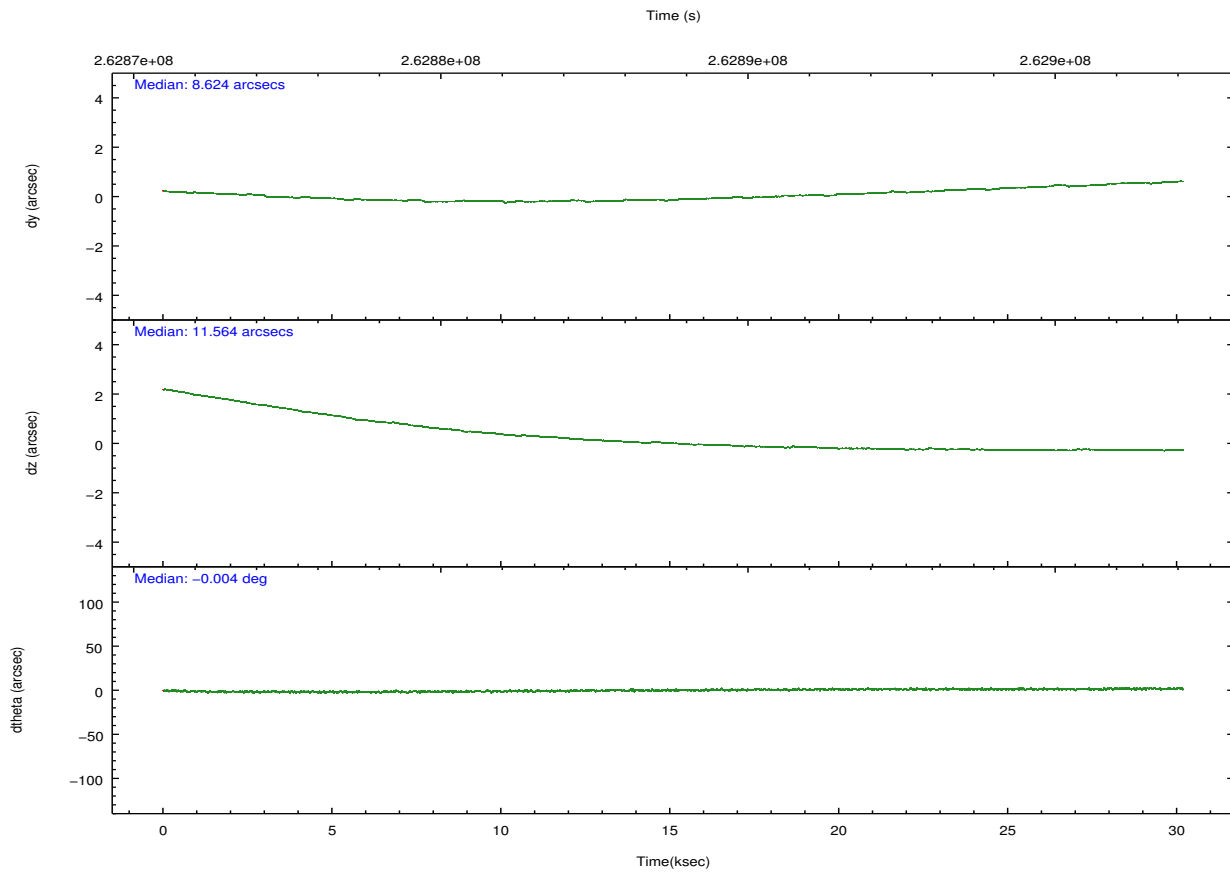
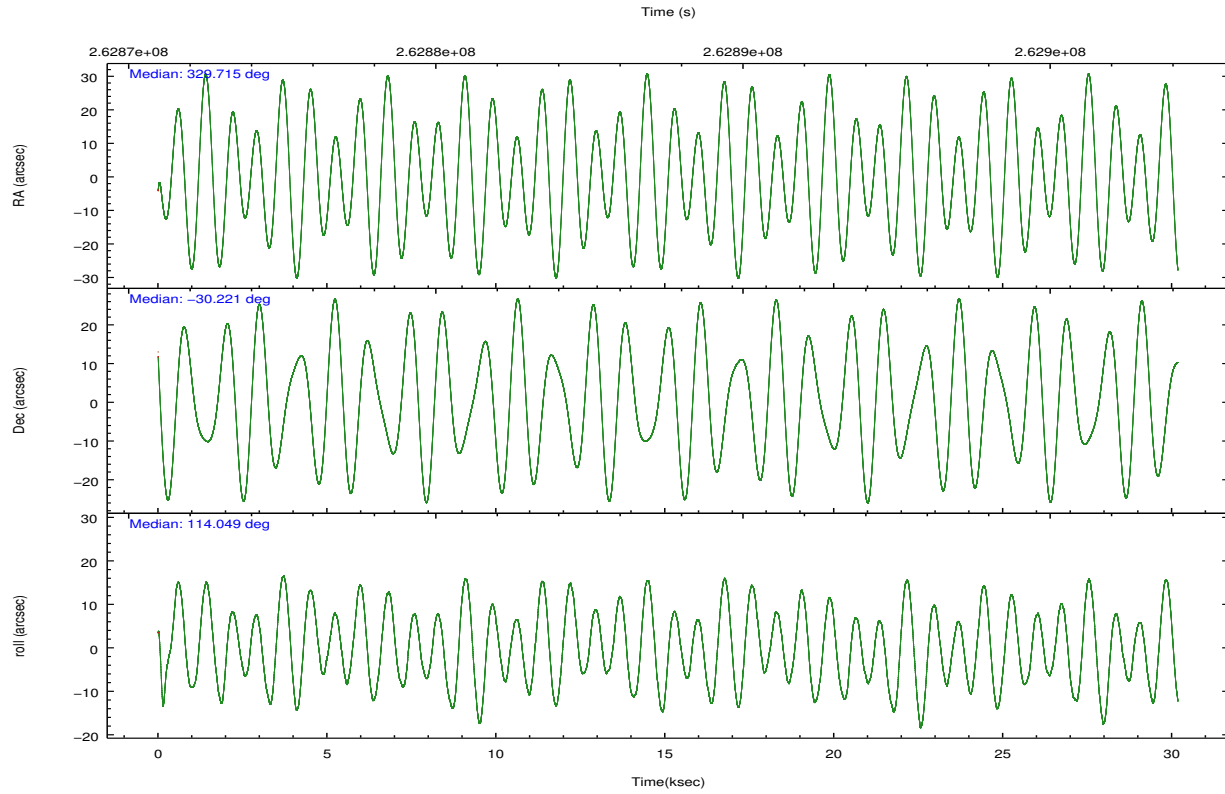
	<b>segment 1</b>	<b>segment 2</b>	<b>segment 3</b>
level 1 events	979289	1037440	986261
rejected events	17778	17810	17758
rejected %	1%	1%	1%

## 2.2 Compared Parameters

Parameter	Planned	Actual	Parameter	Planned	Actual
Instrument	HRC	HRC	Obspar format version number	7	7
Detector	HRC-S	HRC-S	Obspar file type	PREDICTED	ACTUAL
Grating	LETG	LETG	Obspar update status	NONE	UPDATED
Data mode	OBSERVING	OBSERVING			
Observation mode	POINTING	POINTING			
[deg] Pointing RA	329.742332	329.7145874132537			
[deg] Pointing Dec	-30.236841	-30.22127087192731			
[deg] Pointing Roll	114.003767	114.0571338270479			
[s] Window start time (MET)	257558465.184000	257558465.184000			
[s] Window stop time (MET)	270691265.184000	270691265.184000			
[mm] SIM focus pos	-1.429586	-1.429585792112415			
[mm] SIM defocus	0.1037507710433287	0.103750847291882			
[mm] SIM translation stage pos	250.455976	250.466033080201			
[mm] SIM translation stage offset	0	-0.01005468664627074			
[s] Observation start time (MET)	262872651.184000	262871924.57487			
Observation start date	2006-05-01T12:09:46	2006-05-01T11:58:44			
[s] Observation end time (MET)	262902651.184000	262903162.47633			
Observation end date	2006-05-01T20:29:46	2006-05-01T20:39:22			

## 2.3 Aspect



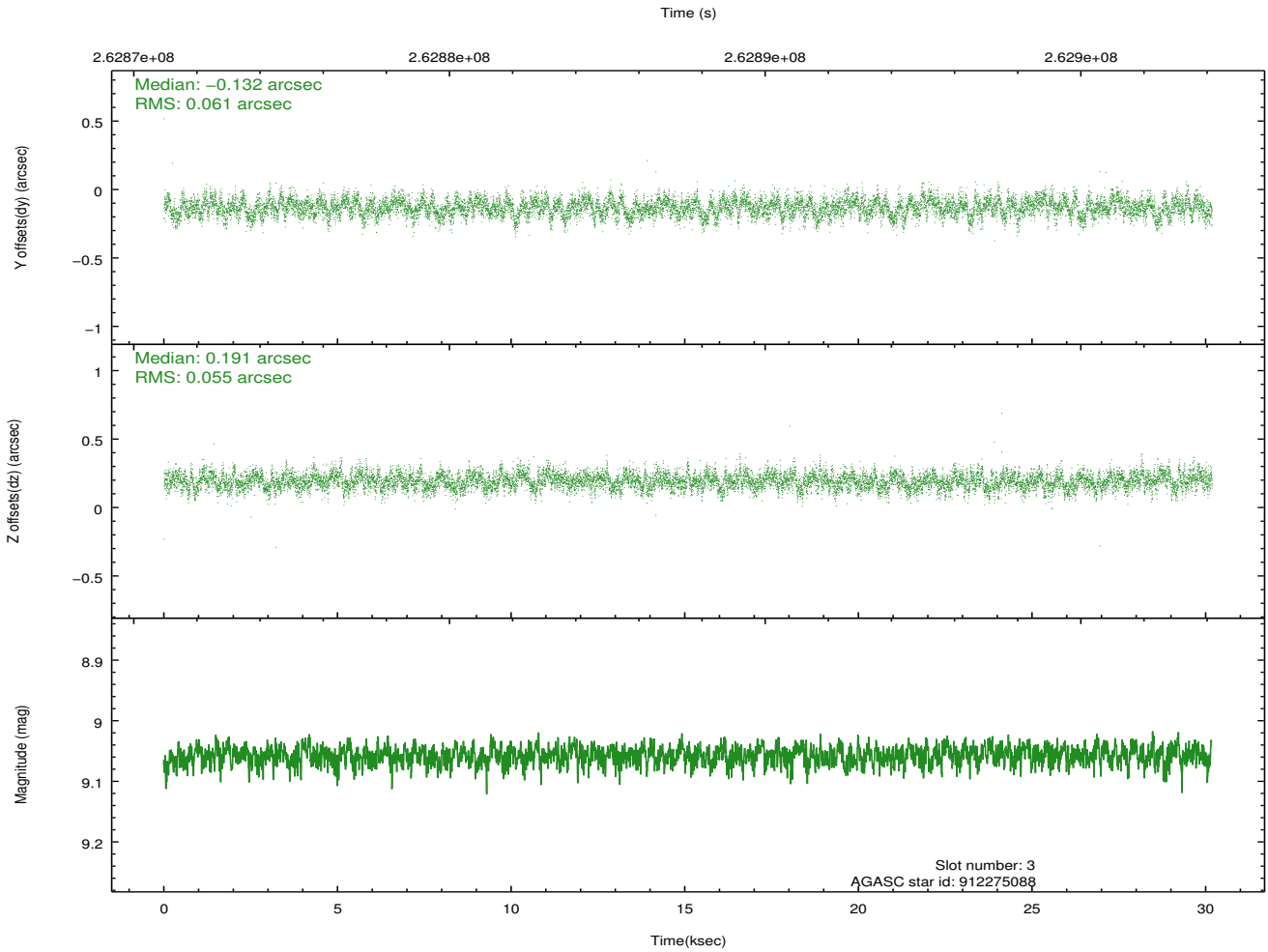
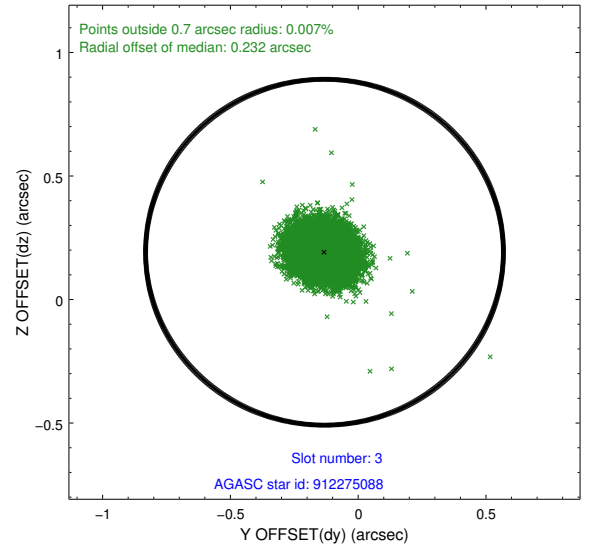
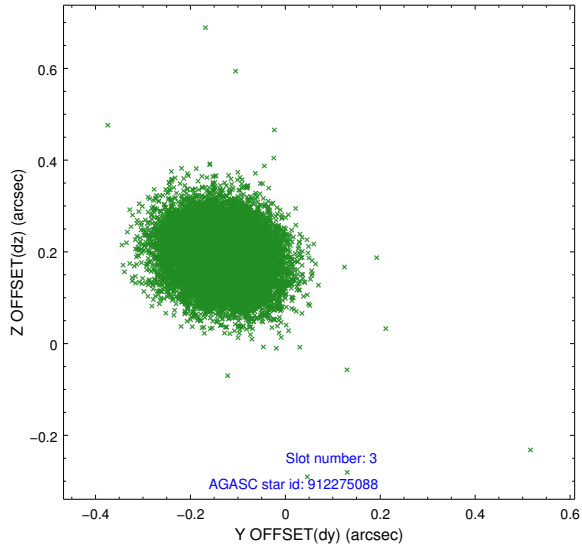


### Slot Statistics

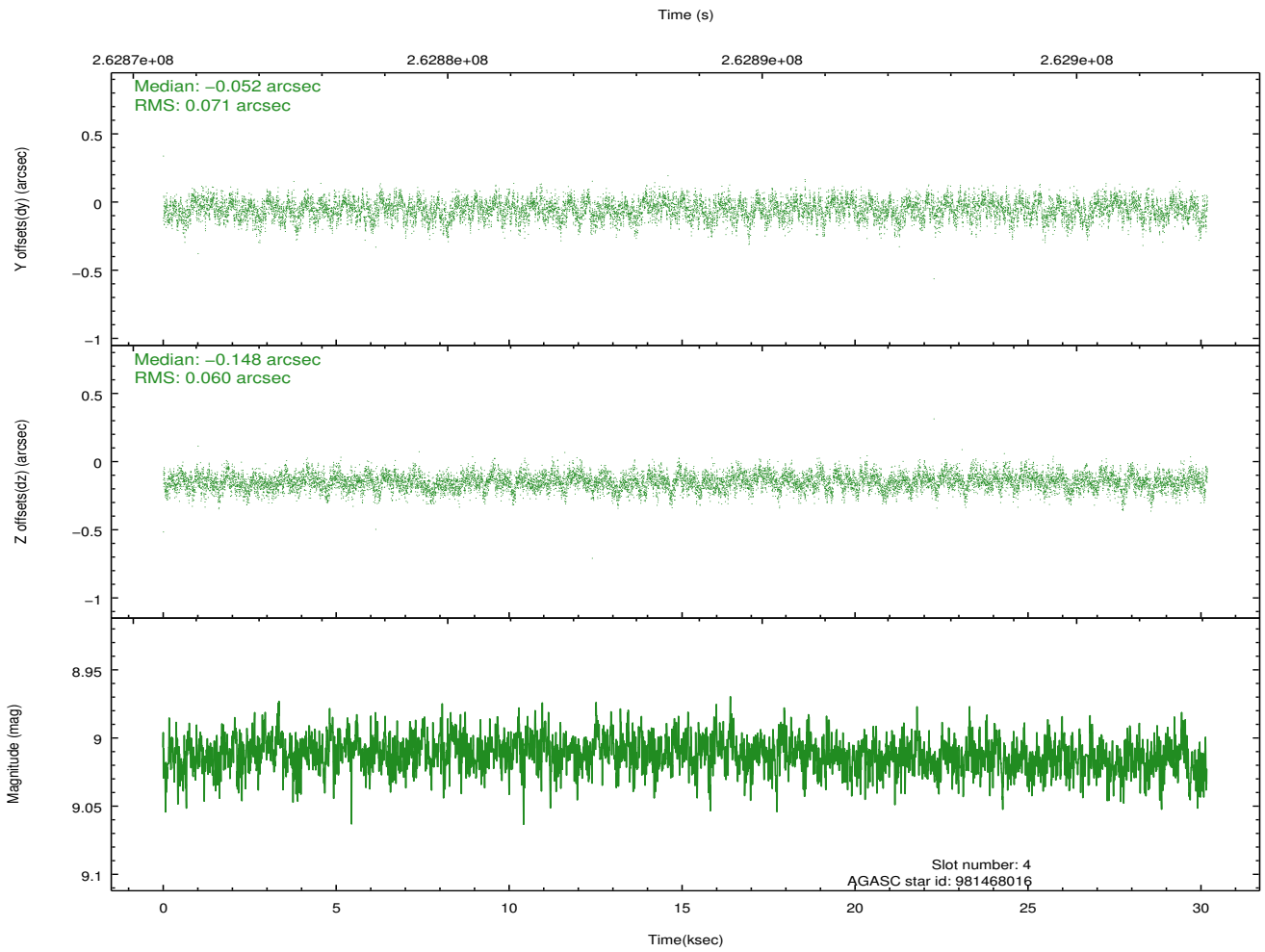
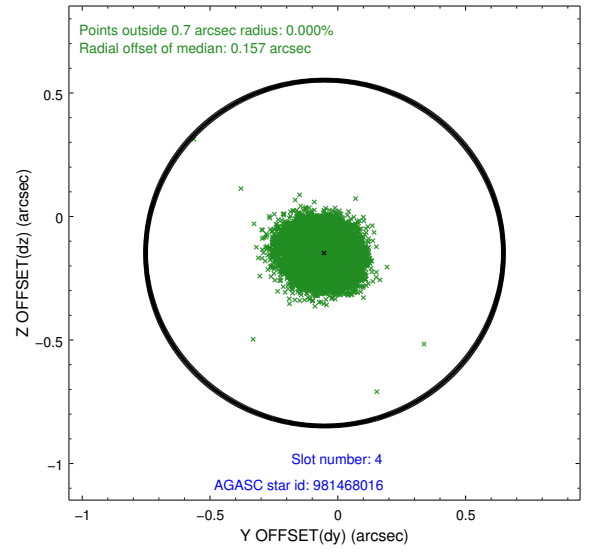
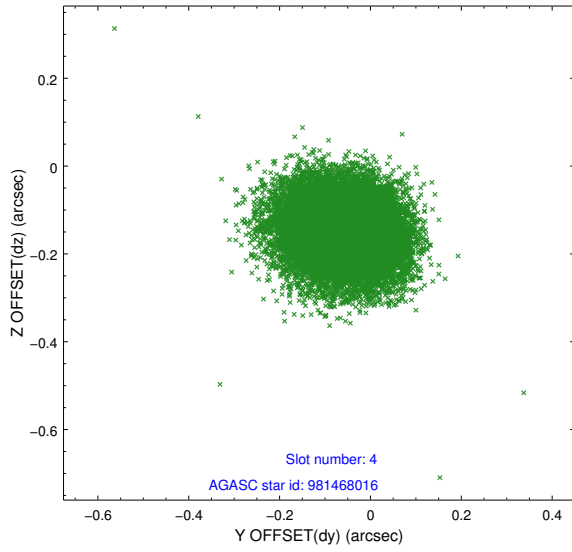
slot	status	id	mag	n_pts	med_dy	med_dz	dr1	dr2	ra	dec	mean_y	mean_z
0	FID	HRC-S-1	7.05	7360	0.150	-0.151	0.016	0.030	0.000000	0.000000	-1162.86	-460.62
1	FID	HRC-S-2	7.04	7362	0.144	-0.115	0.009	0.019	0.000000	0.000000	1236.66	-453.28
2	FID	HRC-S-3	7.06	7361	0.096	-0.036	0.019	0.032	0.000000	0.000000	-1165.47	568.95
3	GUIDE	912275088	9.06	14711	-0.132	0.191	0.087	0.141	329.619228	-29.738698	1794.91	-377.59
4	GUIDE	981468016	9.01	14710	-0.052	-0.148	0.099	0.159	328.842457	-30.034984	1794.73	2270.85
5	GUIDE	981468128	9.36	14712	0.174	0.149	0.102	0.167	329.756350	-30.158334	241.01	-154.70
6	GUIDE	981478152	9.40	14698	0.033	-0.154	0.113	0.179	329.415589	-30.057192	1004.00	667.42
7	GUIDE	912131856	9.76	14710	-0.020	-0.039	0.123	0.199	328.758728	-29.933690	2233.07	2364.74

## 2.4 Star Slots

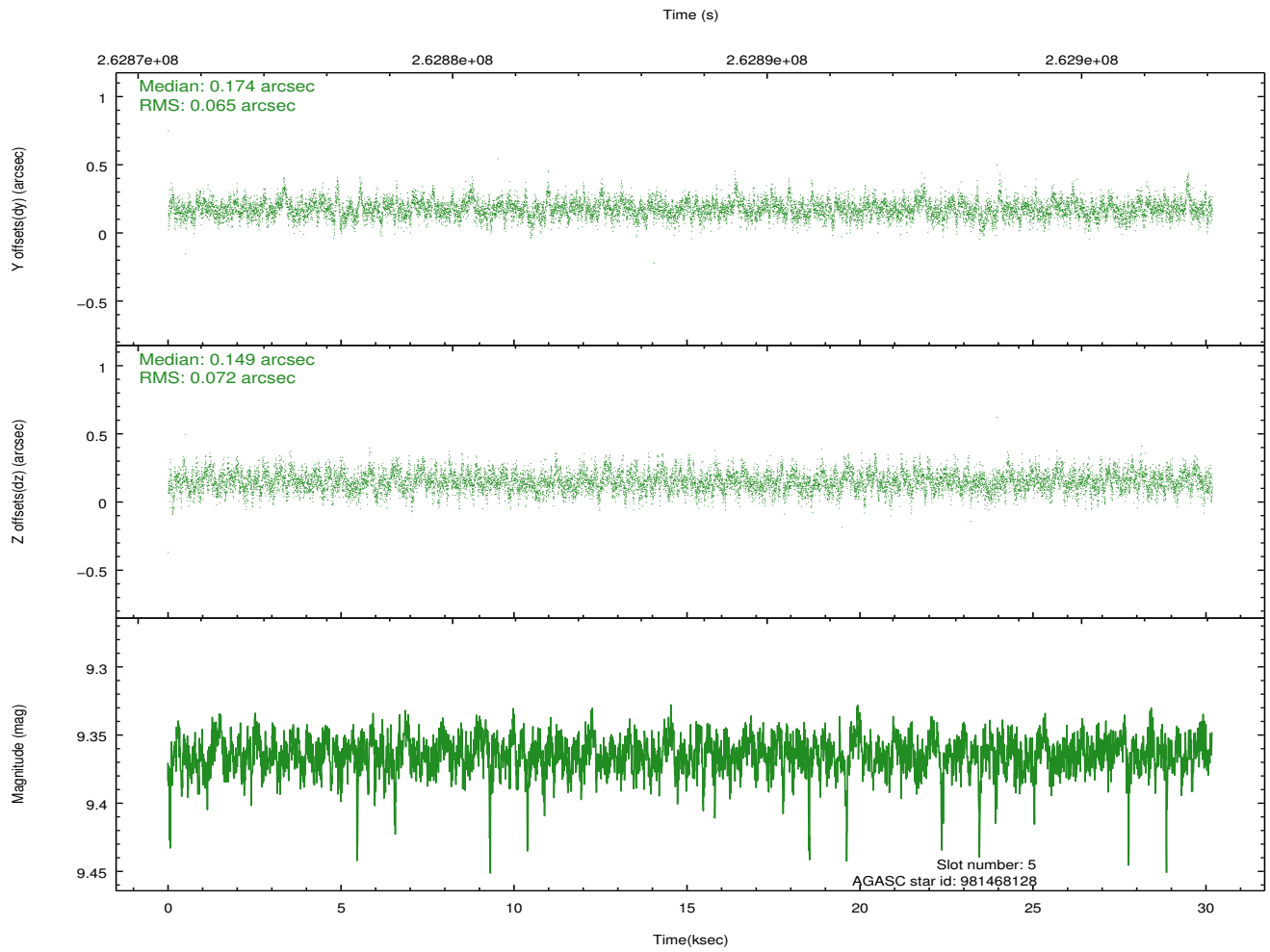
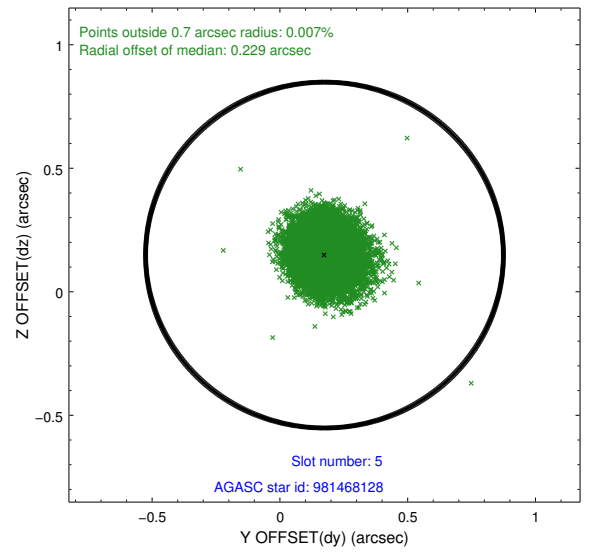
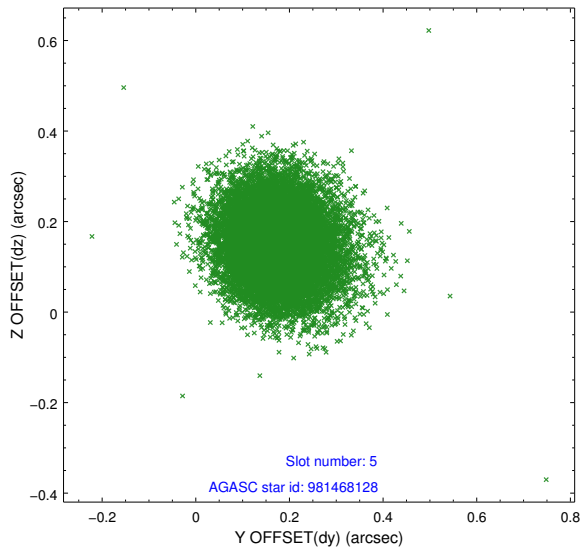
### 2.4.1 Slot 3



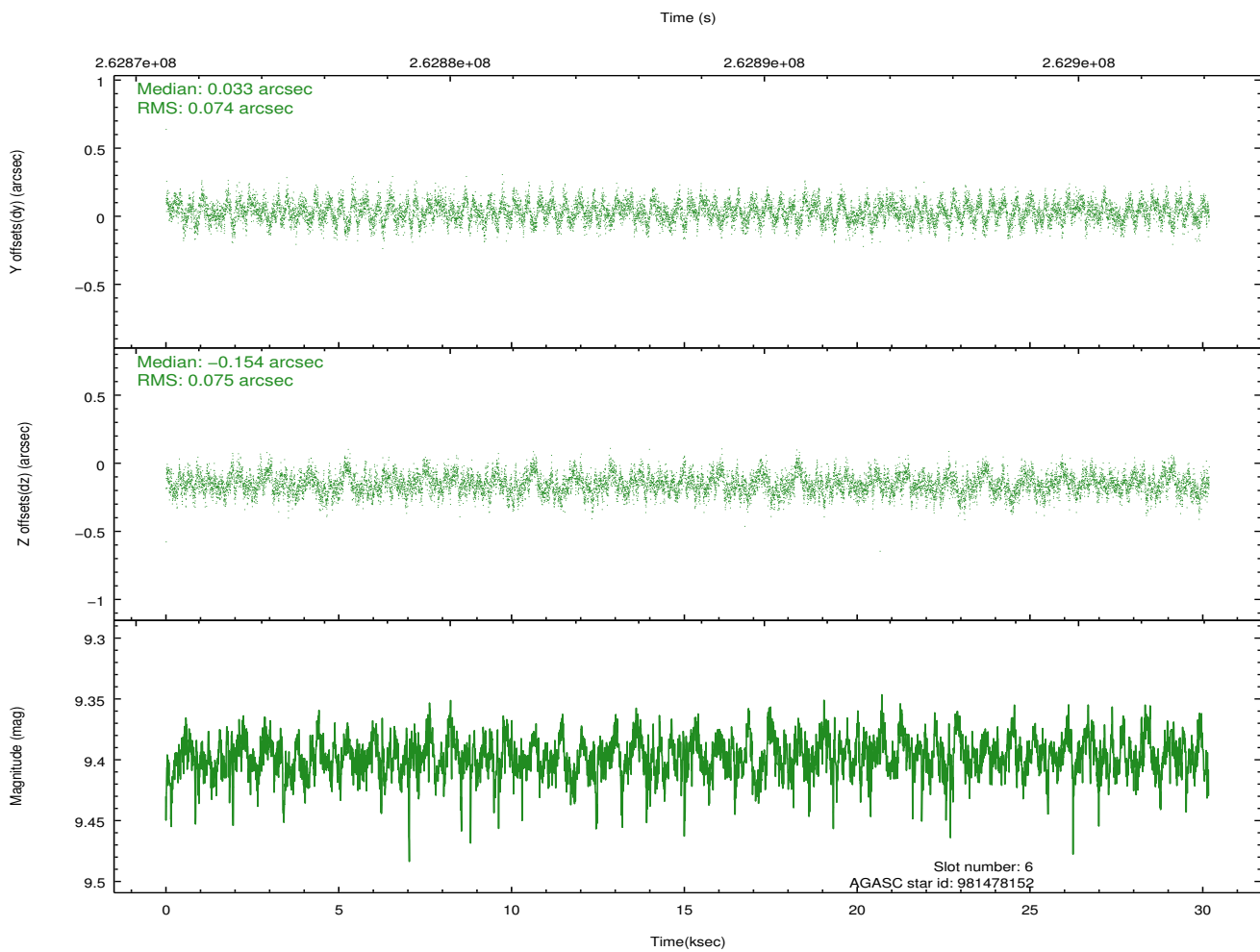
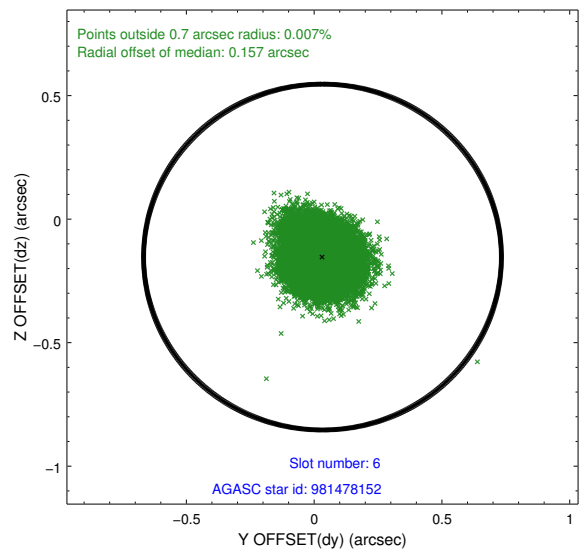
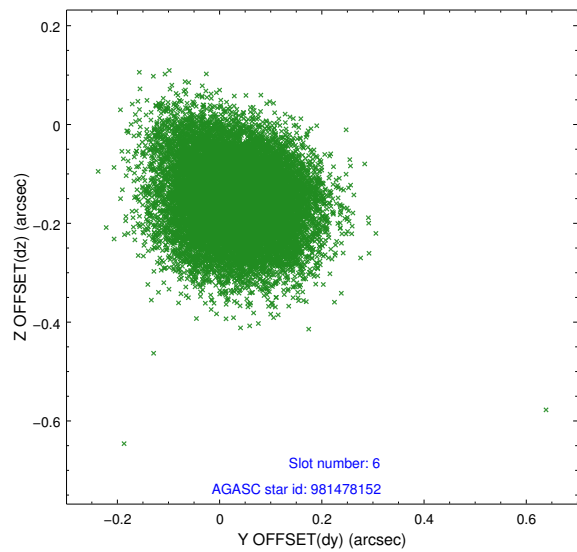
### 2.4.2 Slot 4



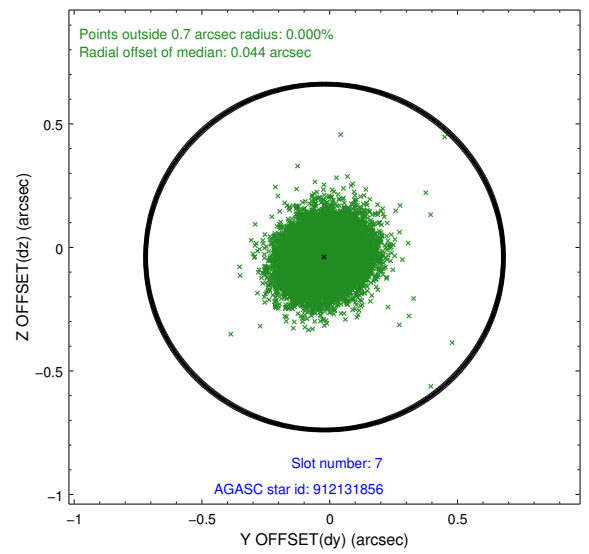
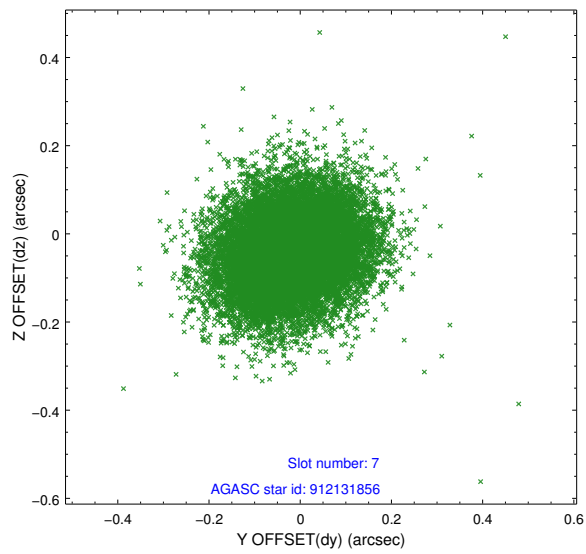
### 2.4.3 Slot 5



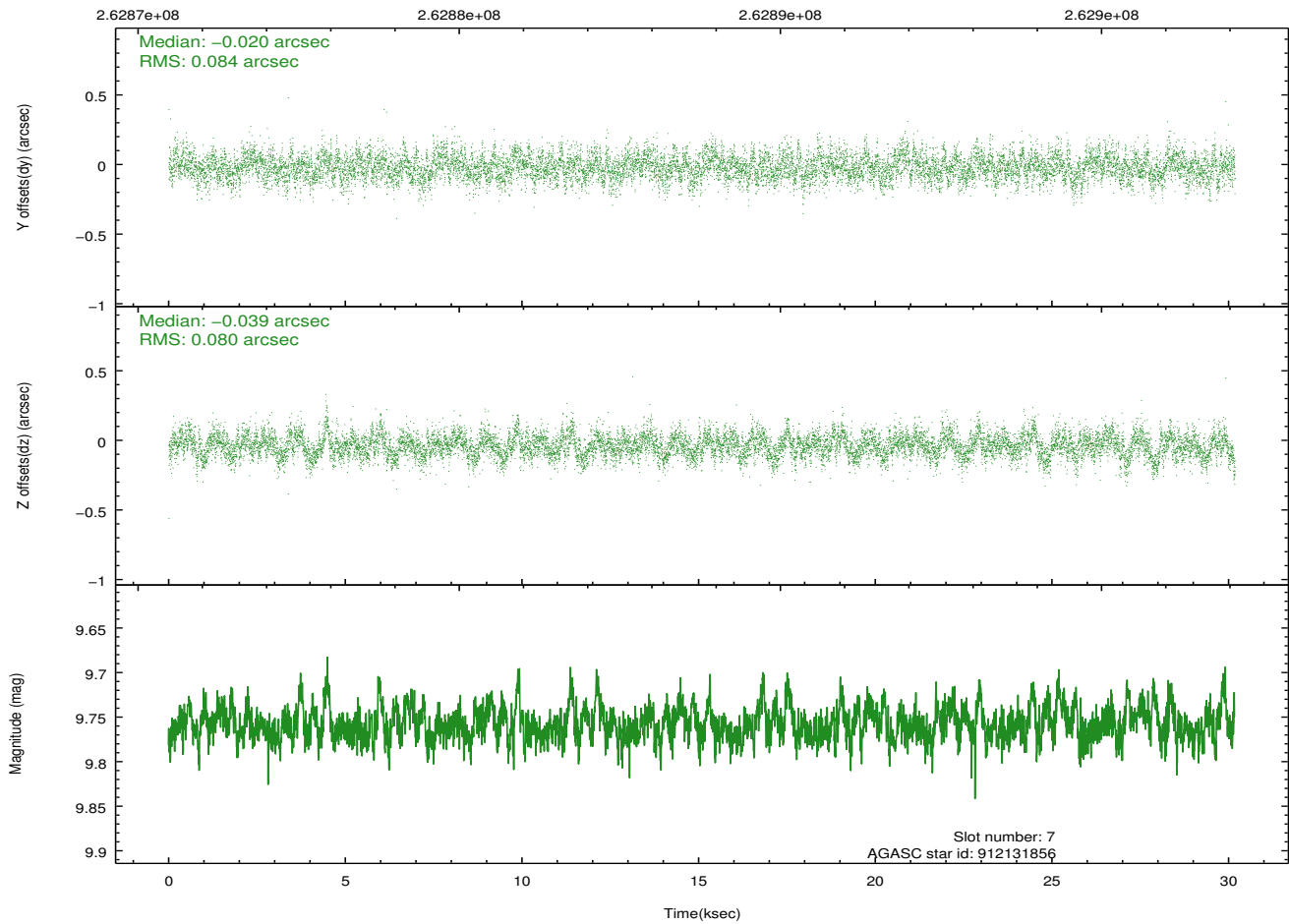
## 2.4.4 Slot 6



## 2.4.5 Slot 7

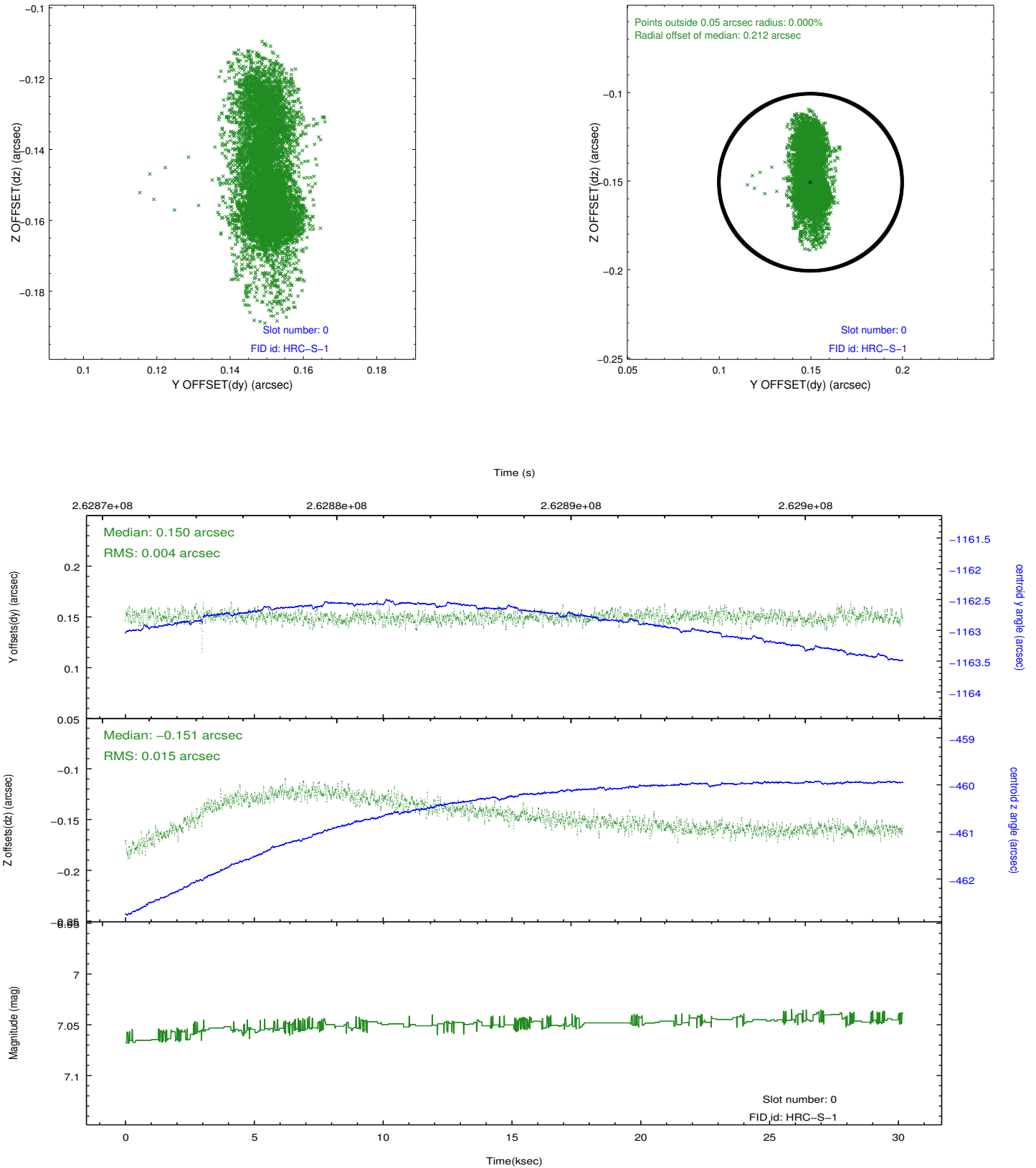


Time (s)

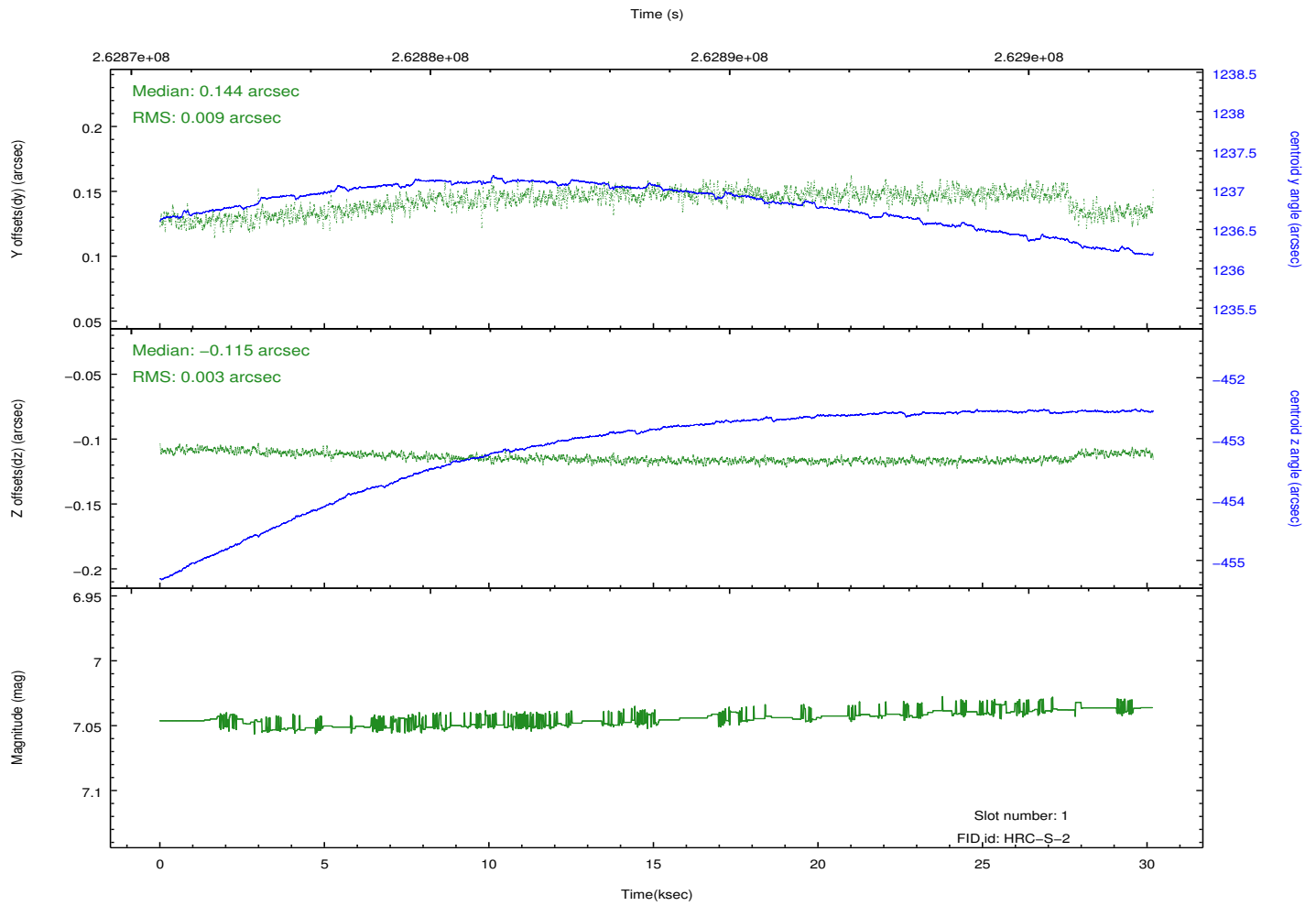
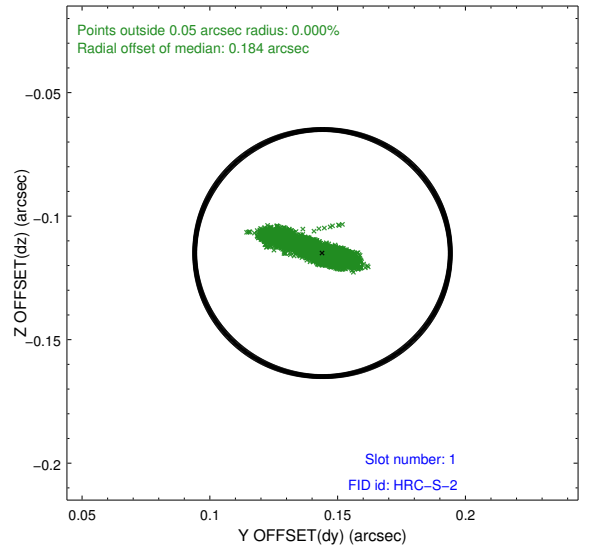
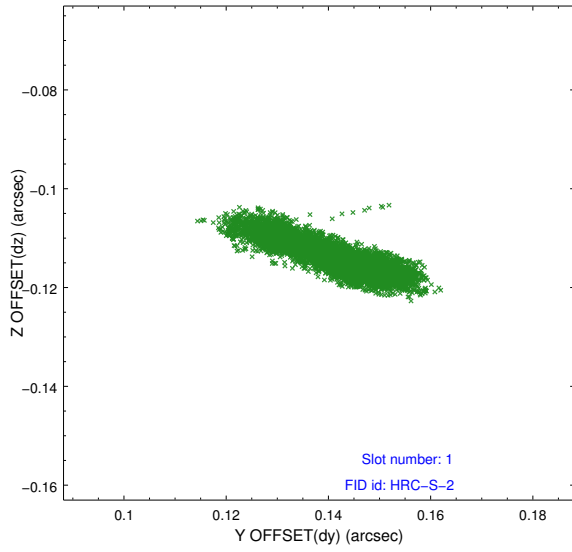


## 2.5 FID Slots

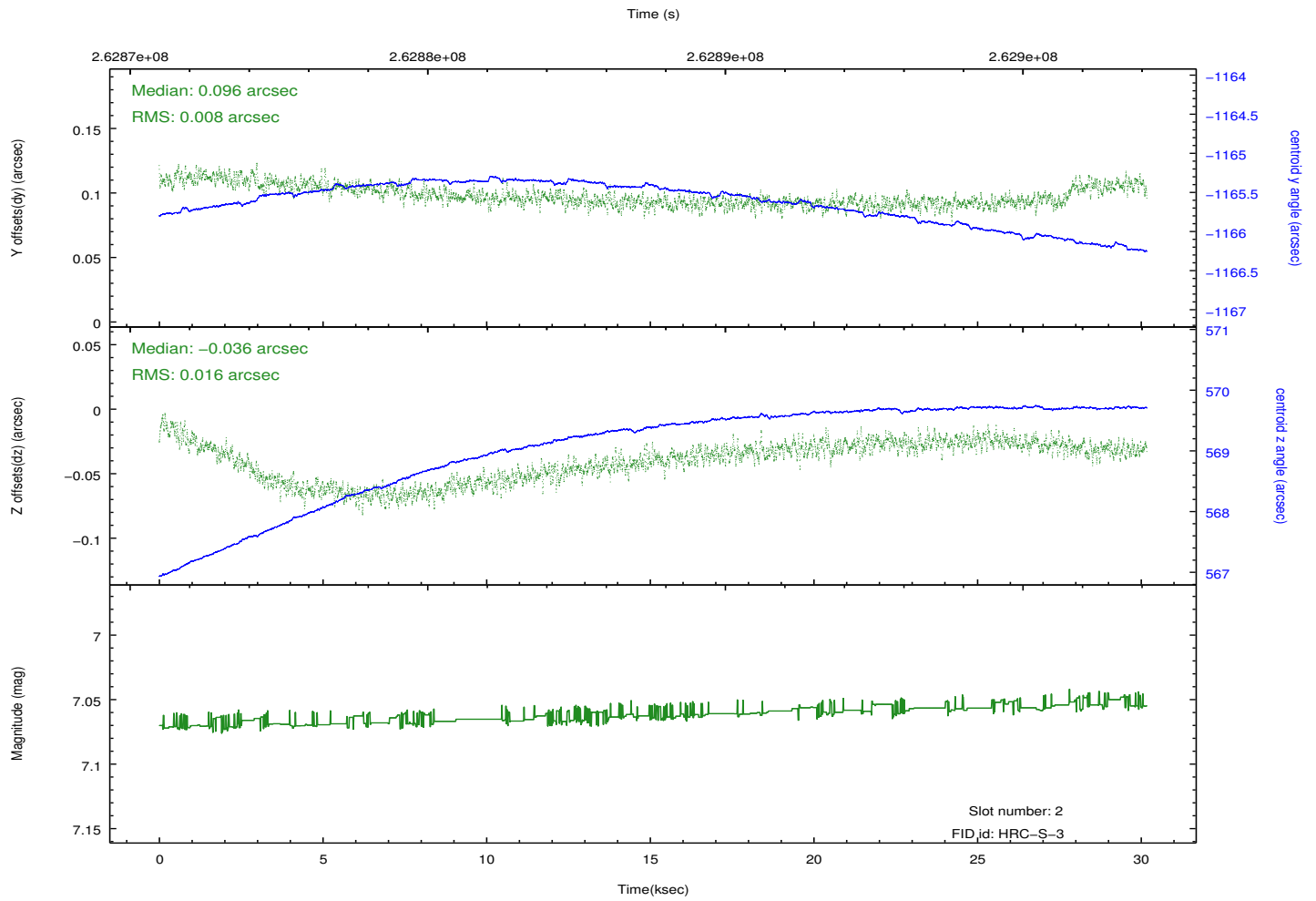
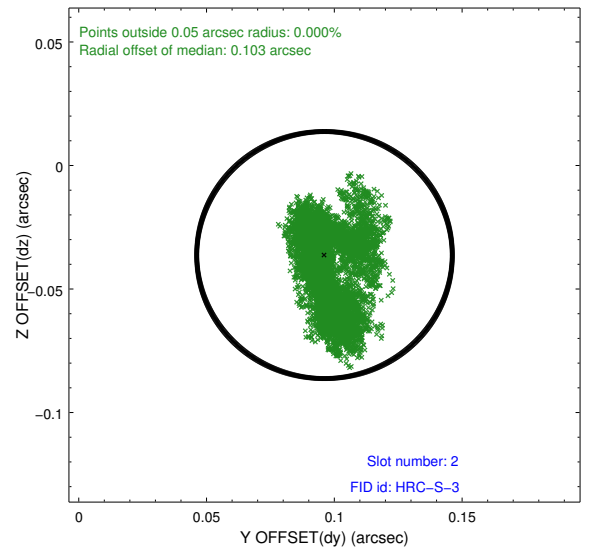
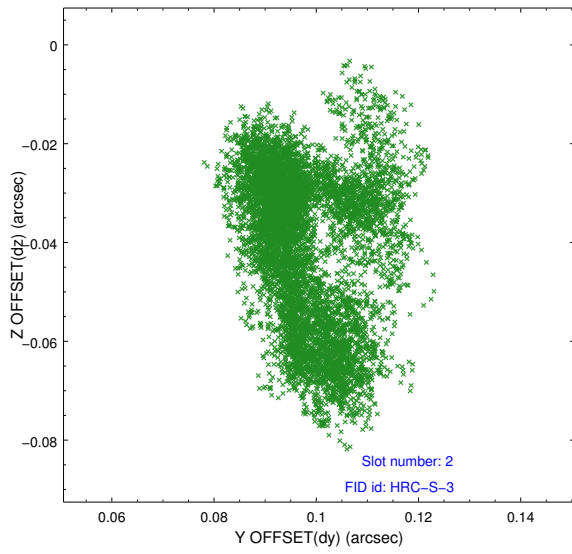
### 2.5.1 Slot 0



## 2.5.2 Slot 1

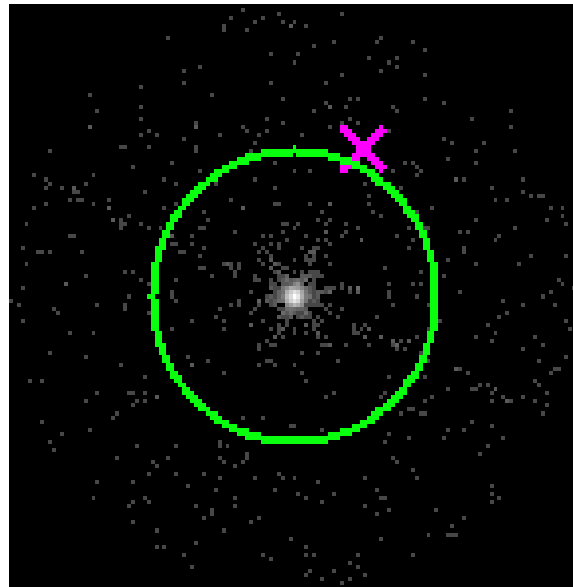


### 2.5.3 Slot 2

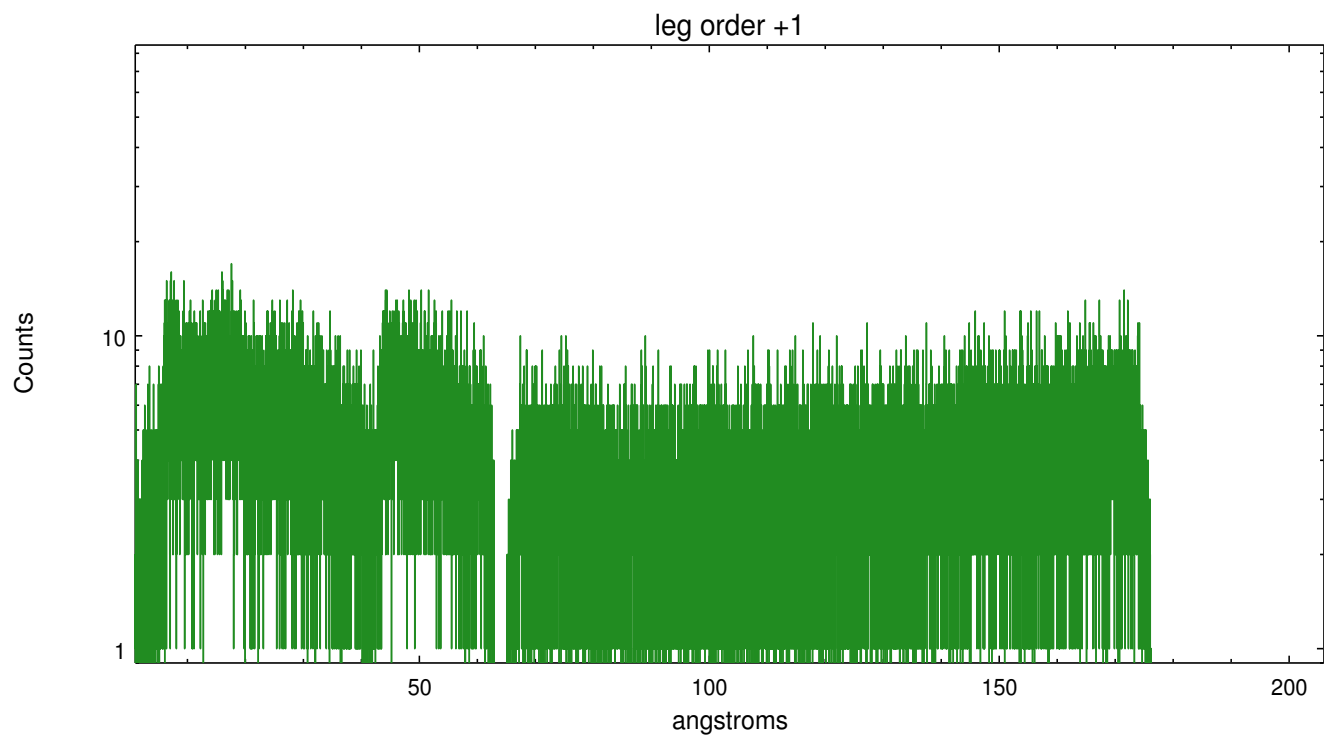
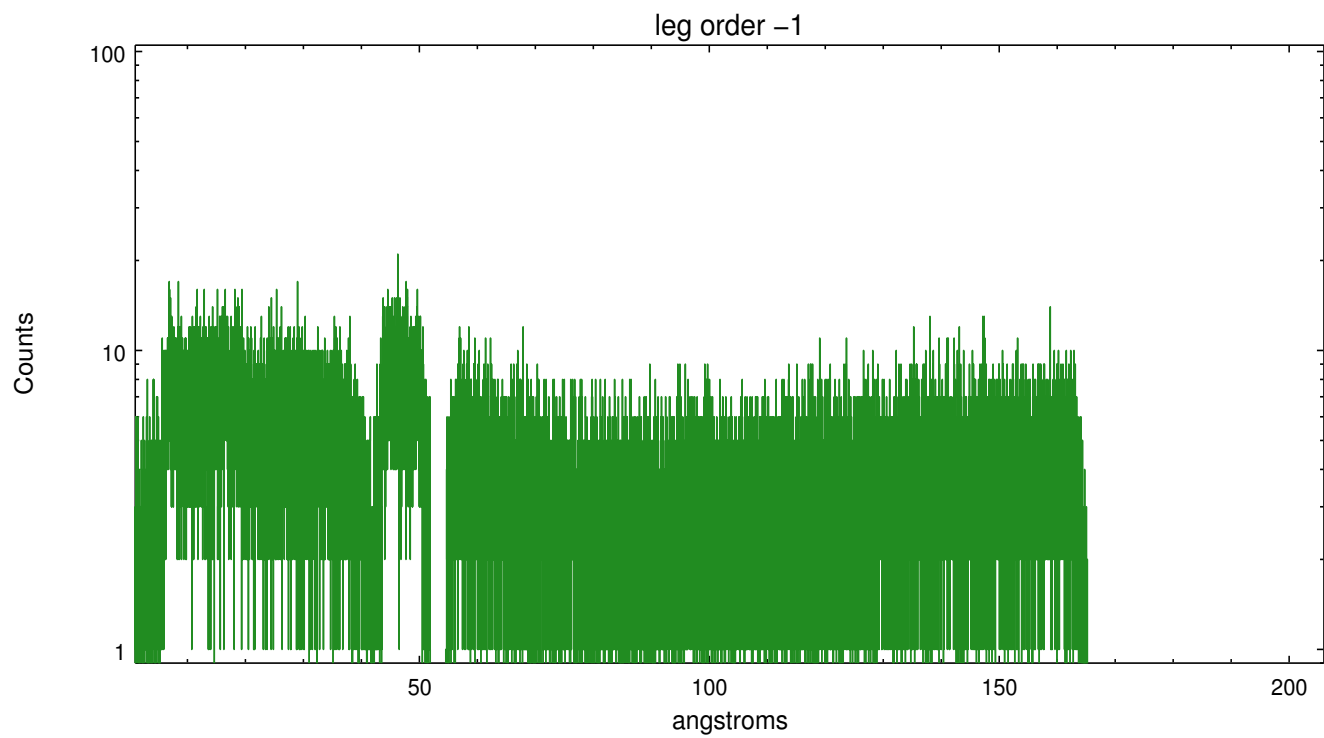


### 3 Gratings

#### 3.1 LETG Arm



LETG Zero Order



# A Summary

## A.1 Status

V&V Scientist	Joy Nichols
V&V Date (YYYY-MM-DD)	2012.08.14
V&V Edition	1
V&V Disposition and Status	OK
V&V Charge Time	30.1793326

## A.2 Comments