

V&V Reference Report

L2 ASCDS Version : 8.4.3.1

Observation 6953 - L2 Version 2
Chandra X-Ray Center

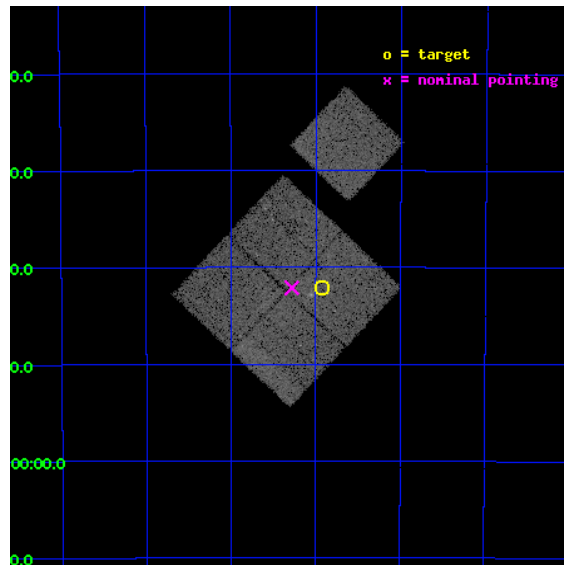
L2 Processing Date : Apr 10 2012

Contents

1	Front	2
2	OBI	3
2.1	OBI	3
2.1.1	Images	3
2.1.2	Bias	3
2.1.3	Parameters	4
2.1.4	Events	4
2.2	Compared Parameters	5
2.3	Aspect	6
2.4	Star Slots	9
2.4.1	Slot 3	9
2.4.2	Slot 4	10
2.4.3	Slot 5	11
2.4.4	Slot 6	12
2.4.5	Slot 7	13
2.5	FID Slots	14
2.5.1	Slot 0	14
2.5.2	Slot 1	15
2.5.3	Slot 2	16
A	Summary	17
A.1	Status	17
A.2	Comments	17

1 Front

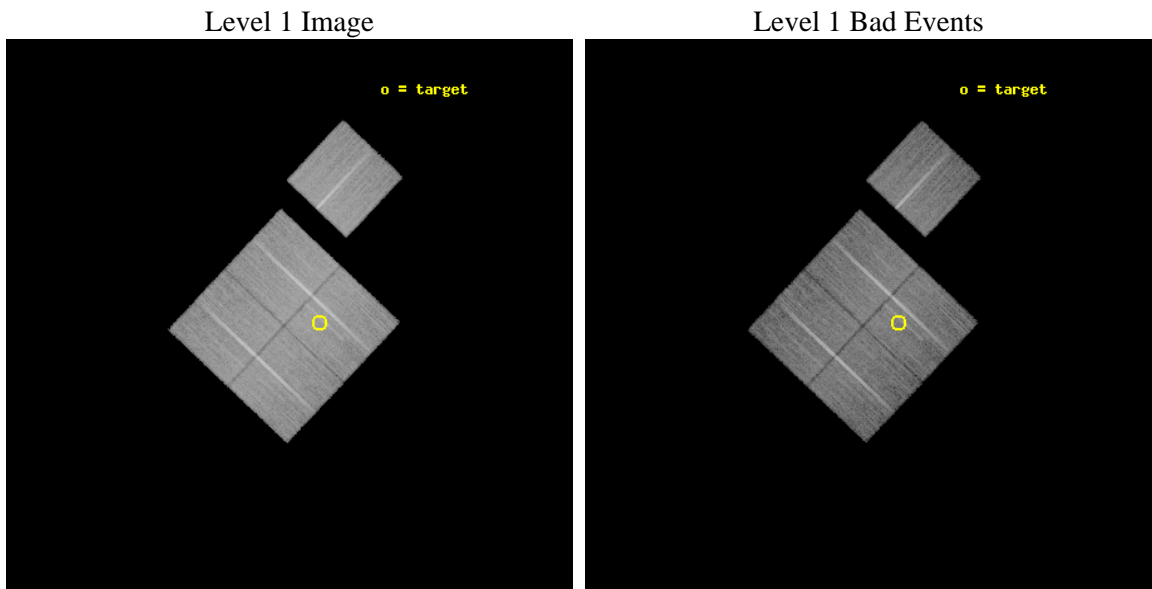
seq_num	800586	Sequence number
obs_id	6953	Observation id
title	Chandra Study of the Structure of the Southern Part of the Horologium Supercluster	Proposal title
observer	Dr. Hans Boehringer	Principal investigator
object	RXCJ0334-5342	Source name
dtcycle	0	
cycle	P	events from which exps? Prim/Second/Both
ra_targ	53.733333	Observer's specified target RA [deg]
dec_targ	-53.702222	Observer's specified target Dec [deg]
ra_nom	53.82031812757	Nominal RA [deg]
dec_nom	-53.702183291628	Nominal Dec [deg]
roll_nom	43.320677926813	Nominal Roll [deg]
revision	2	Processing version of data
ontime	20044.600154161	Sum of GTIs [s]
livetime	19782.702696527	Livetime [s]
ontime0	20041.459243476	Sum of GTIs [s]
ontime1	20044.600154161	Sum of GTIs [s]
ontime2	20044.600154161	Sum of GTIs [s]
ontime3	20044.600154161	Sum of GTIs [s]
ontime6	20041.45915395	Sum of GTIs [s]
l2events	66184	Number of level 2 events



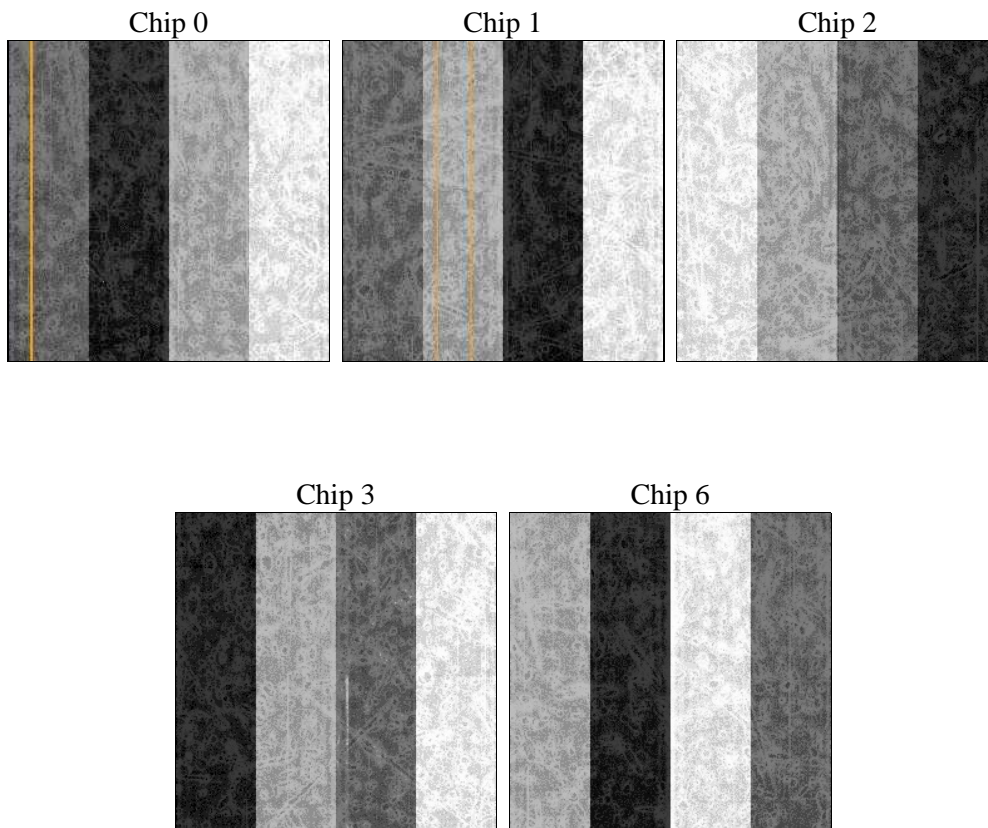
2 OBI

2.1 OBI

2.1.1 Images



2.1.2 Bias



2.1.3 Parameters

obi_num	1	Obi number	sched_exp_time	20000.000000	[s] Scheduled observation exposure time
ascdsver	8.4.3.1	Processing system revision	ontime	20044.600154161	Sum of GTIs [s]
caldbver	4.4.9	 	ontime0	20041.459243476	Sum of GTIs [s]
date	2012-04-11T01:30:33	Date and time of file creation	ontime1	20044.600154161	Sum of GTIs [s]
revision	2	Processing version of data	ontime2	20044.600154161	Sum of GTIs [s]
			ontime3	20044.600154161	Sum of GTIs [s]
			ontime6	20041.45915395	Sum of GTIs [s]
			l1events	760804	Number of level 1 events

2.1.4 Events

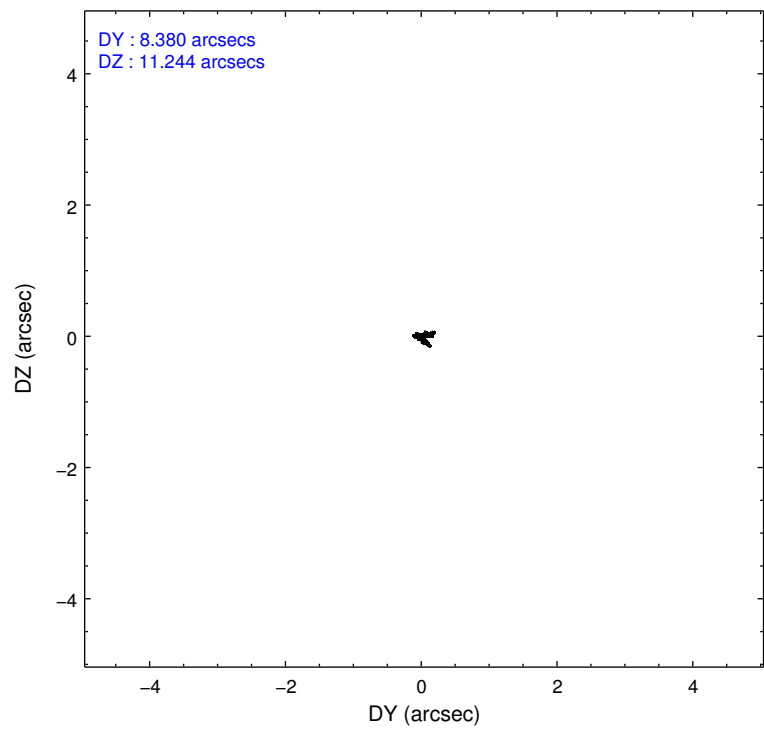
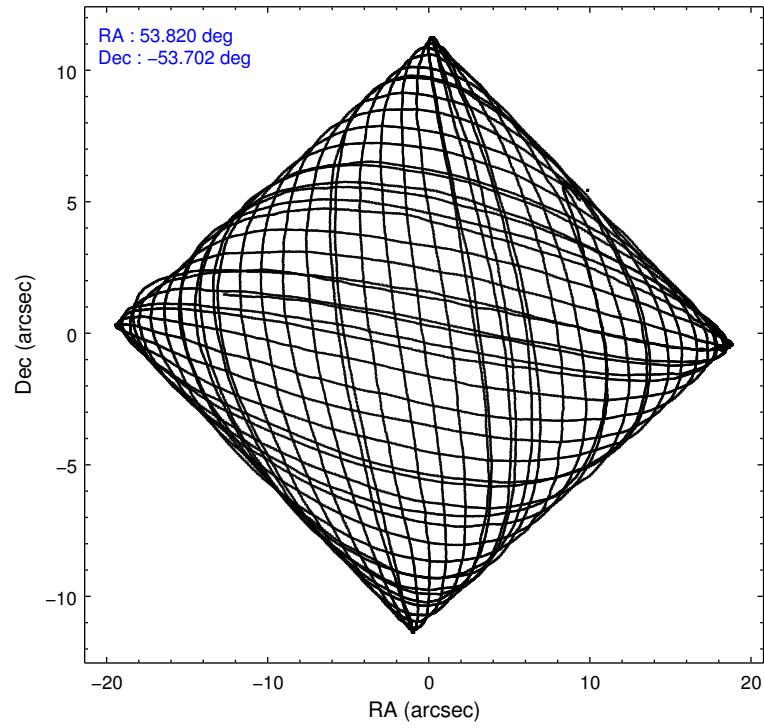
	ccd 0	ccd 1	ccd 2	ccd 3	ccd 6
level 1 events	144030	143486	164441	156163	152684
rejected events	128865	126393	148895	139933	137101
rejected %	89%	88%	90%	89%	89%

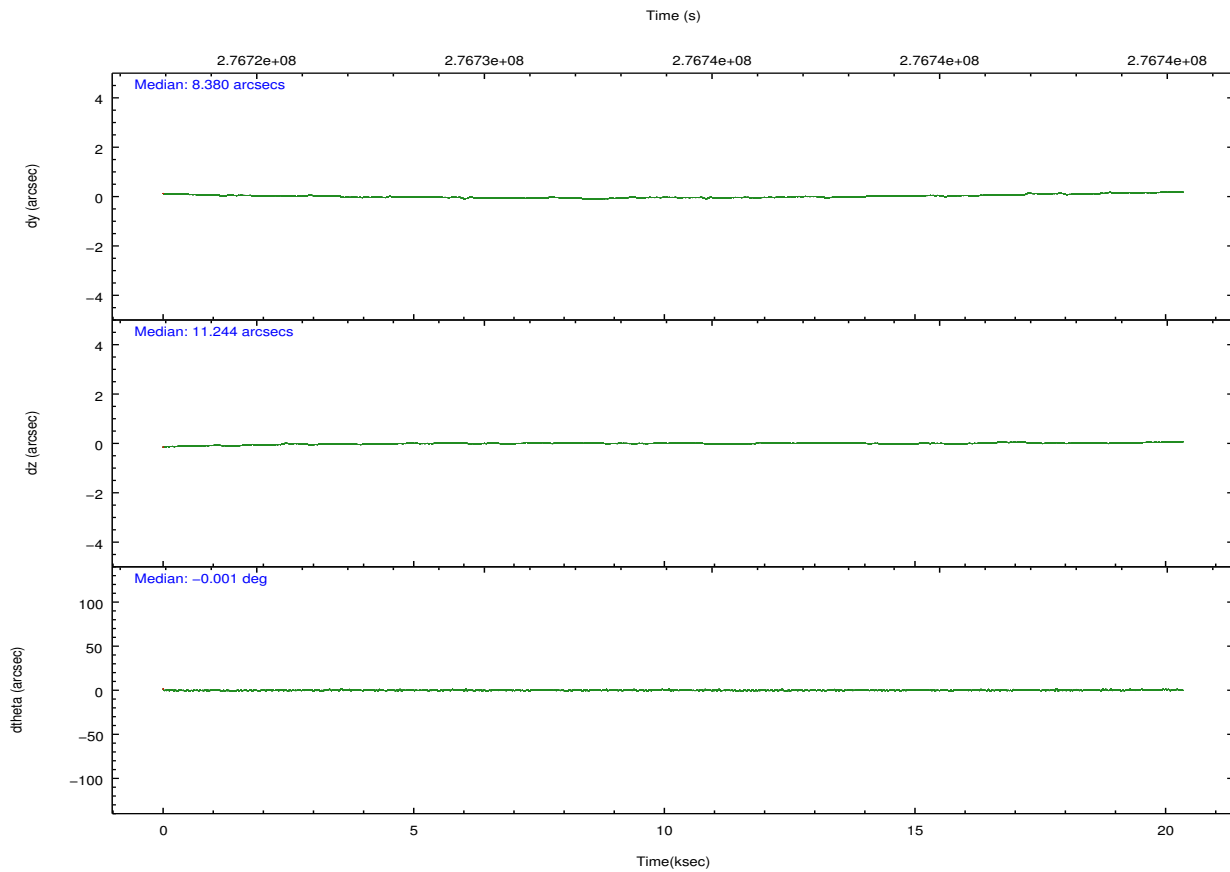
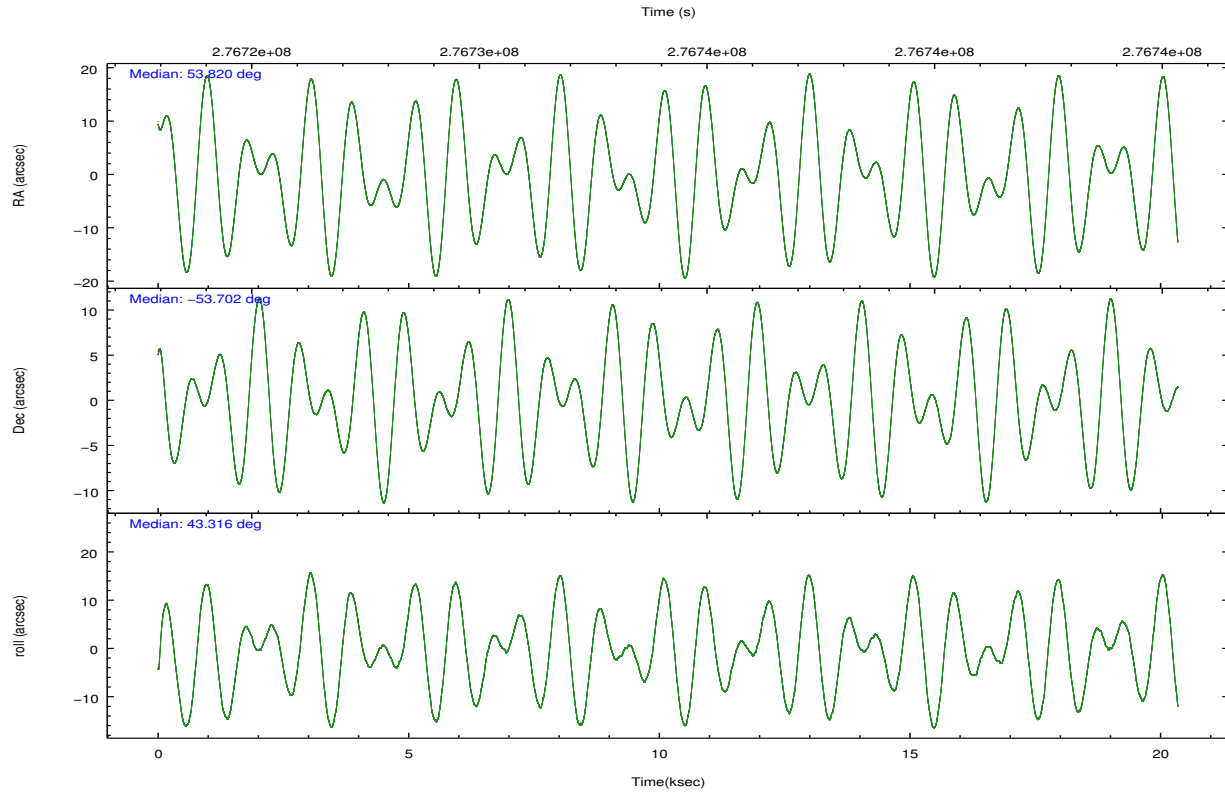
	ccd 0	ccd 1	ccd 2	ccd 3	ccd 6
grade 0 events	5358	6208	5966	6736	5395
	3%	4%	3%	4%	3%
grade 1 events	69	81	102	121	61
	0%	0%	0%	0%	0%
grade 2 events	3710	3769	3613	3251	3366
	2%	2%	2%	2%	2%
grade 3 events	1653	1851	1580	1671	1802
	1%	1%	0%	1%	1%
grade 4 events	1524	1824	1632	1663	1733
	1%	1%	0%	1%	1%
grade 5 events	5067	5768	4843	6142	5997
	3%	4%	2%	3%	3%
grade 6 events	2923	3443	2760	2911	3291
	2%	2%	1%	1%	2%
grade 7 events	123726	120542	143945	133668	131039
	85%	84%	87%	85%	85%

2.2 Compared Parameters

Parameter	Planned	Actual	Parameter	Planned	Actual
Instrument	ACIS	ACIS	Obspar format version number	7	7
Detector	ACIS-01236	ACIS-01236	Obspar file type	PREDICTED	ACTUAL
Grating	NONE	NONE	Obspar update status	NONE	UPDATED
Data mode	VFAINT	VFAINT	Number of optional ACIS chips dropped	0	0
Observation mode	POINTING	POINTING	On-chip summing requested	N	N
[deg] Pointing RA	53.807157	53.82031812757015	Subarray requested	NONE	NONE
[deg] Pointing Dec	-53.728458	-53.70218329162818	Alternating exposures requested	N	N
[deg] Pointing Roll	43.101387	43.32067792681259	[s] Primary exposure time	0.000000	3.1
[mm] SIM focus pos	-0.782348	-0.7809083437167272			
[mm] SIM defocus	0	0.001439871863259334			
[mm] SIM translation stage pos	-233.592463	-233.5874344608287			
[mm] SIM translation stage offset	0	-0.005018542100998502			
[s] Observation start time (MET)	276724314.184000	276723307.82398			
Observation start date	2006-10-08T19:50:49	2006-10-08T19:35:07			
[s] Observation end time (MET)	276744314.184000	276744844.1			
Observation end date	2006-10-09T01:24:09	2006-10-09T01:34:04			
Read mode	TIMED	TIMED			

2.3 Aspect



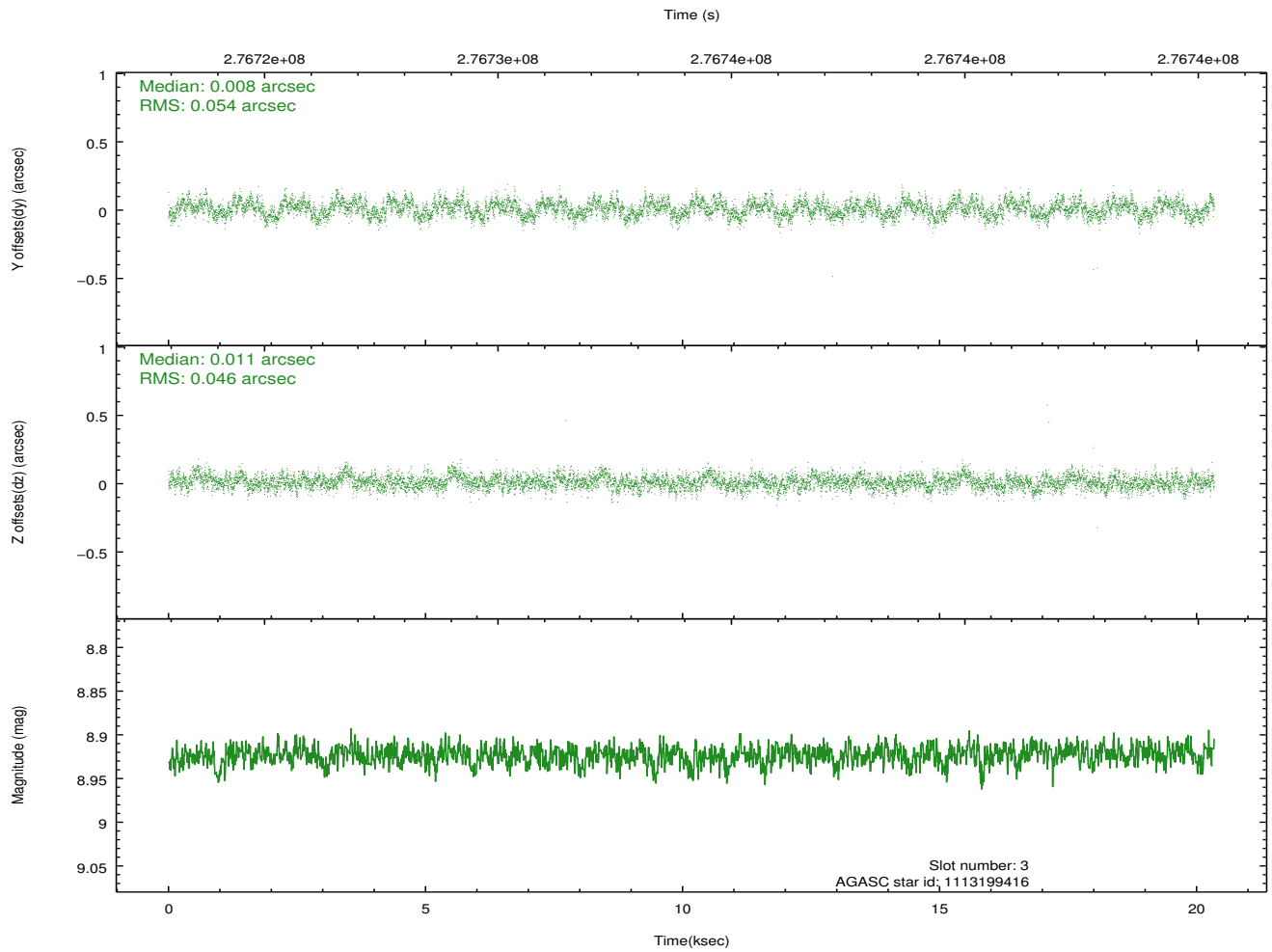
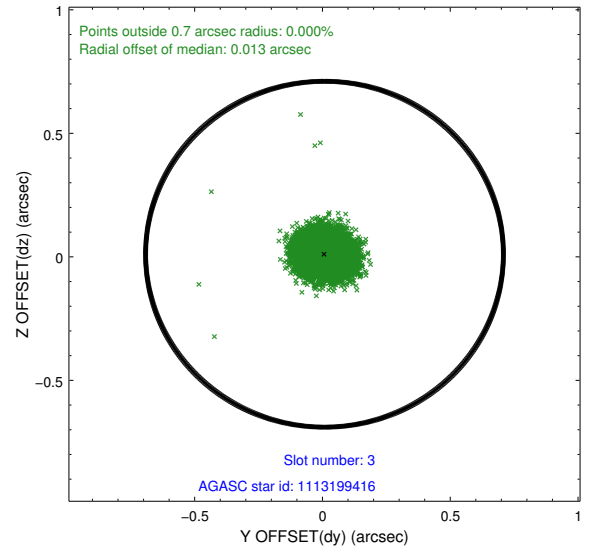
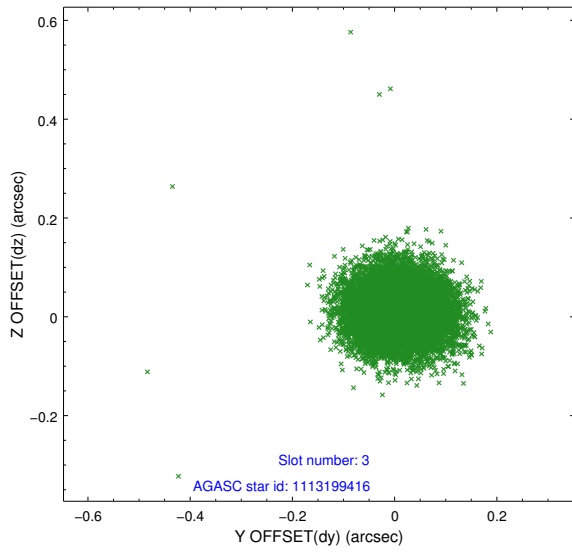


Slot Statistics

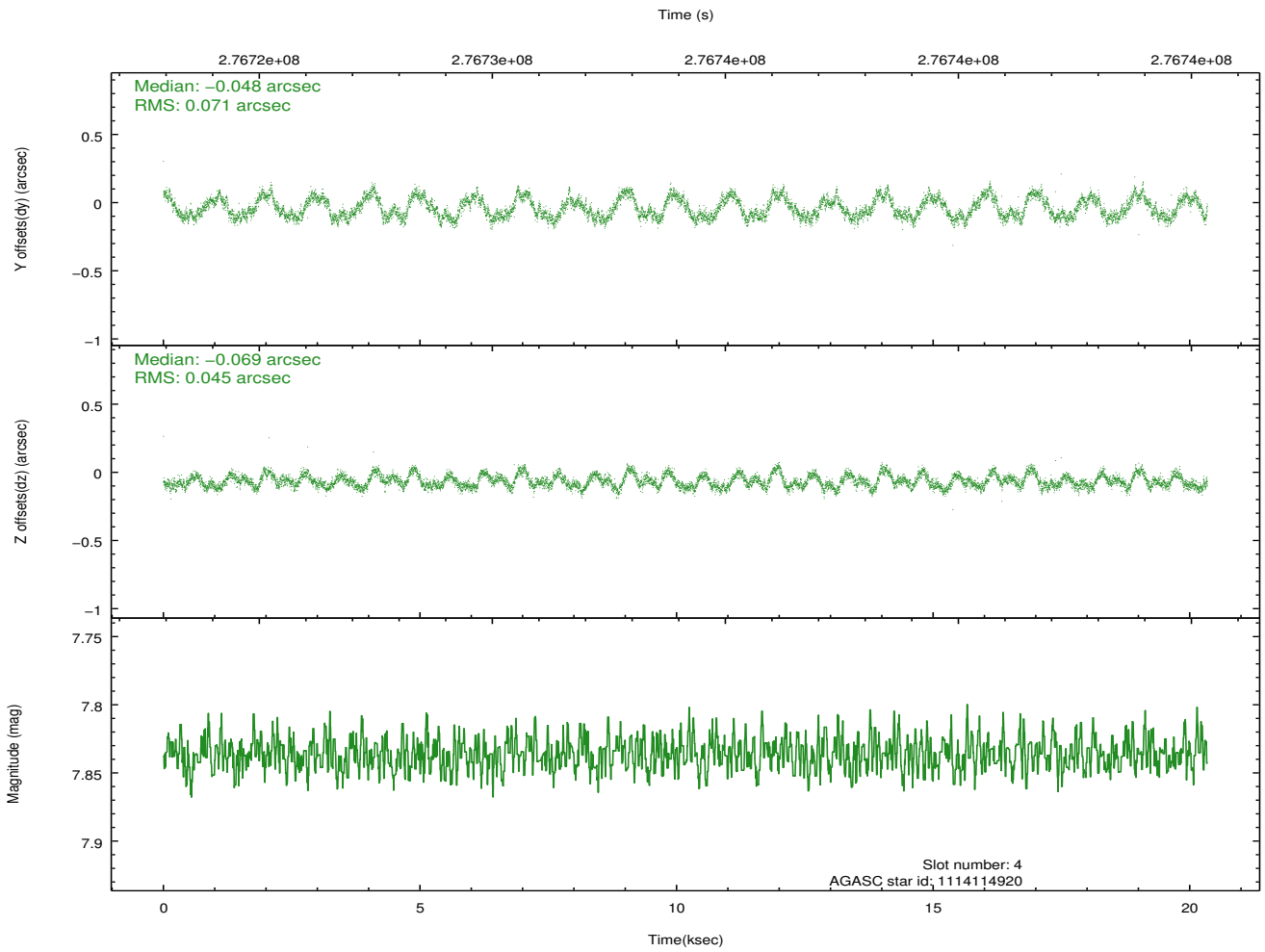
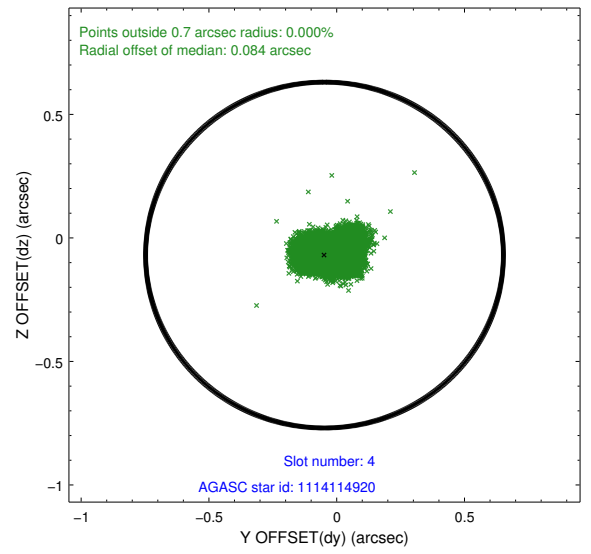
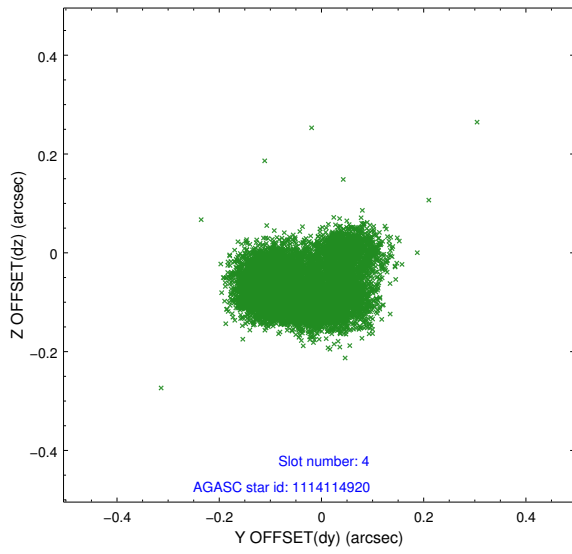
slot	status	id	mag	n_pts	med_dy	med_dz	dr1	dr2	ra	dec	mean_y	mean_z
0	FID	ACIS-I-1	7.24	4963	0.060	-0.056	0.007	0.012	0.000000	0.000000	931.30	-834.81
1	FID	ACIS-I-5	7.23	4963	-0.209	0.057	0.006	0.011	0.000000	0.000000	-1816.95	1062.74
2	FID	ACIS-I-6	7.24	4963	0.058	0.070	0.007	0.012	0.000000	0.000000	396.67	1707.43
3	GUIDE	1113199416	8.92	9916	0.008	0.011	0.076	0.119	53.012594	-53.597967	-924.91	1495.98
4	GUIDE	1114114920	7.84	9924	-0.048	-0.069	0.088	0.143	54.264002	-53.077860	2319.52	1033.14
5	GUIDE	1114115088	8.51	9918	-0.036	-0.034	0.069	0.110	53.661136	-53.520475	283.45	760.19
6	GUIDE	1114120328	8.04	9918	0.032	0.046	0.074	0.123	55.167791	-53.738234	2073.11	-2025.61
7	GUIDE	1114117176	7.50	9924	0.035	0.047	0.059	0.099	53.541891	-54.511735	-2331.78	-1681.15

2.4 Star Slots

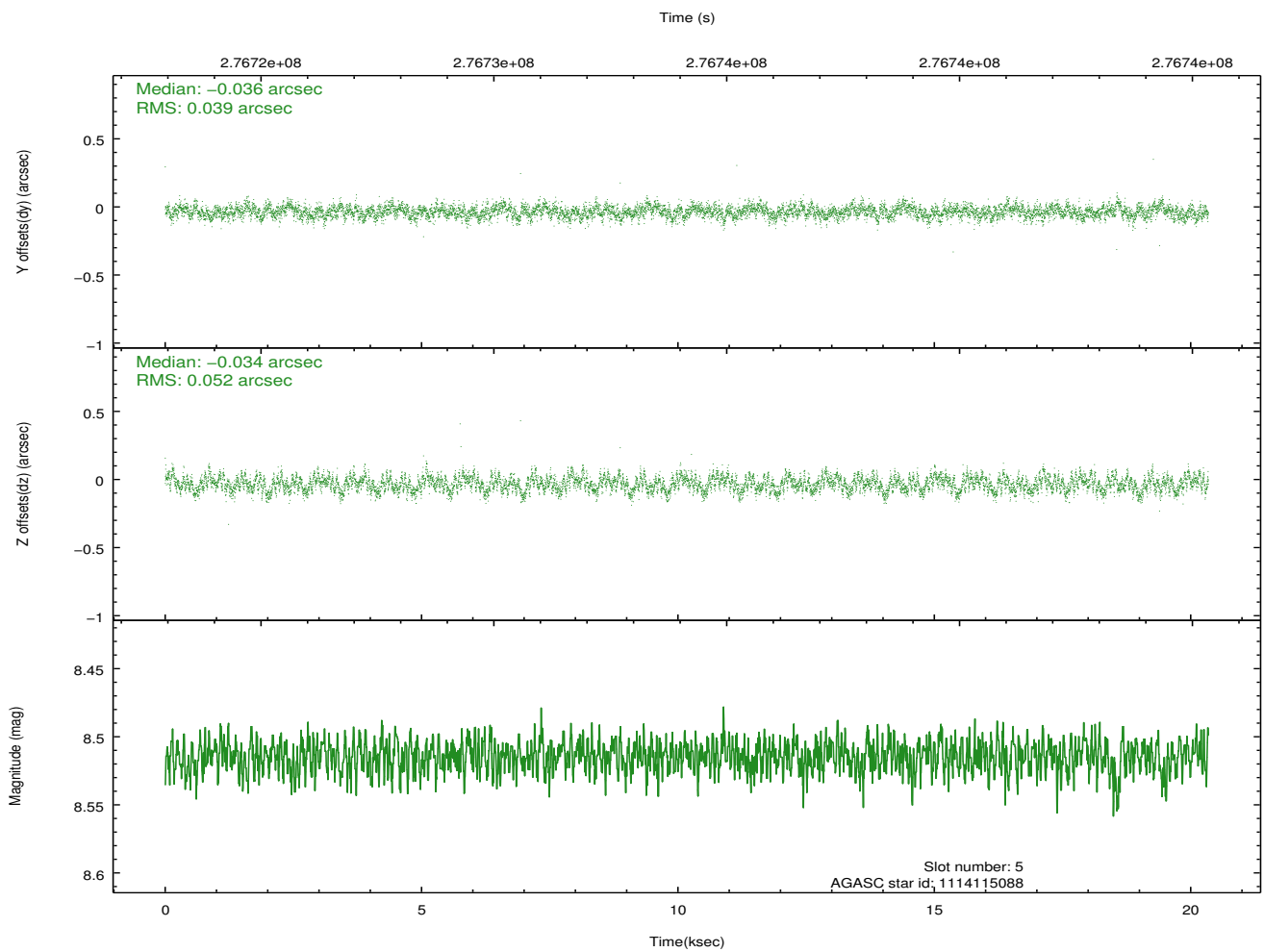
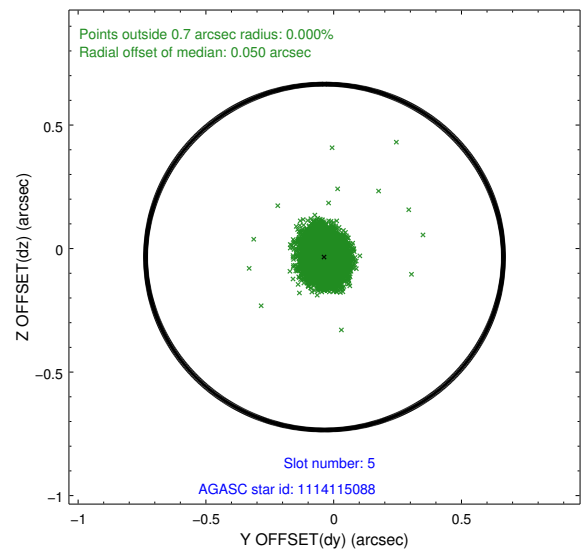
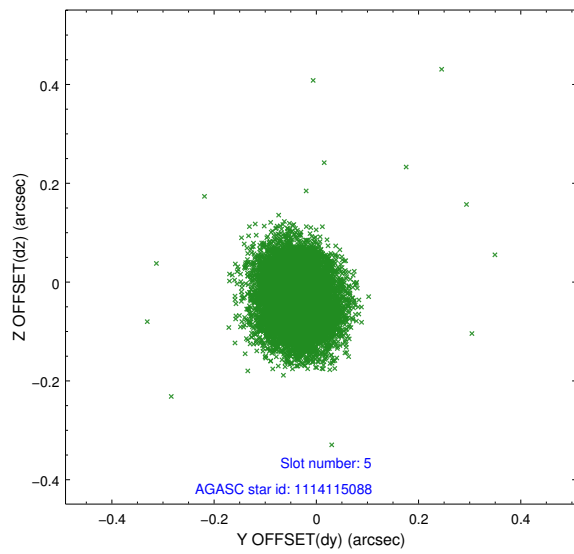
2.4.1 Slot 3



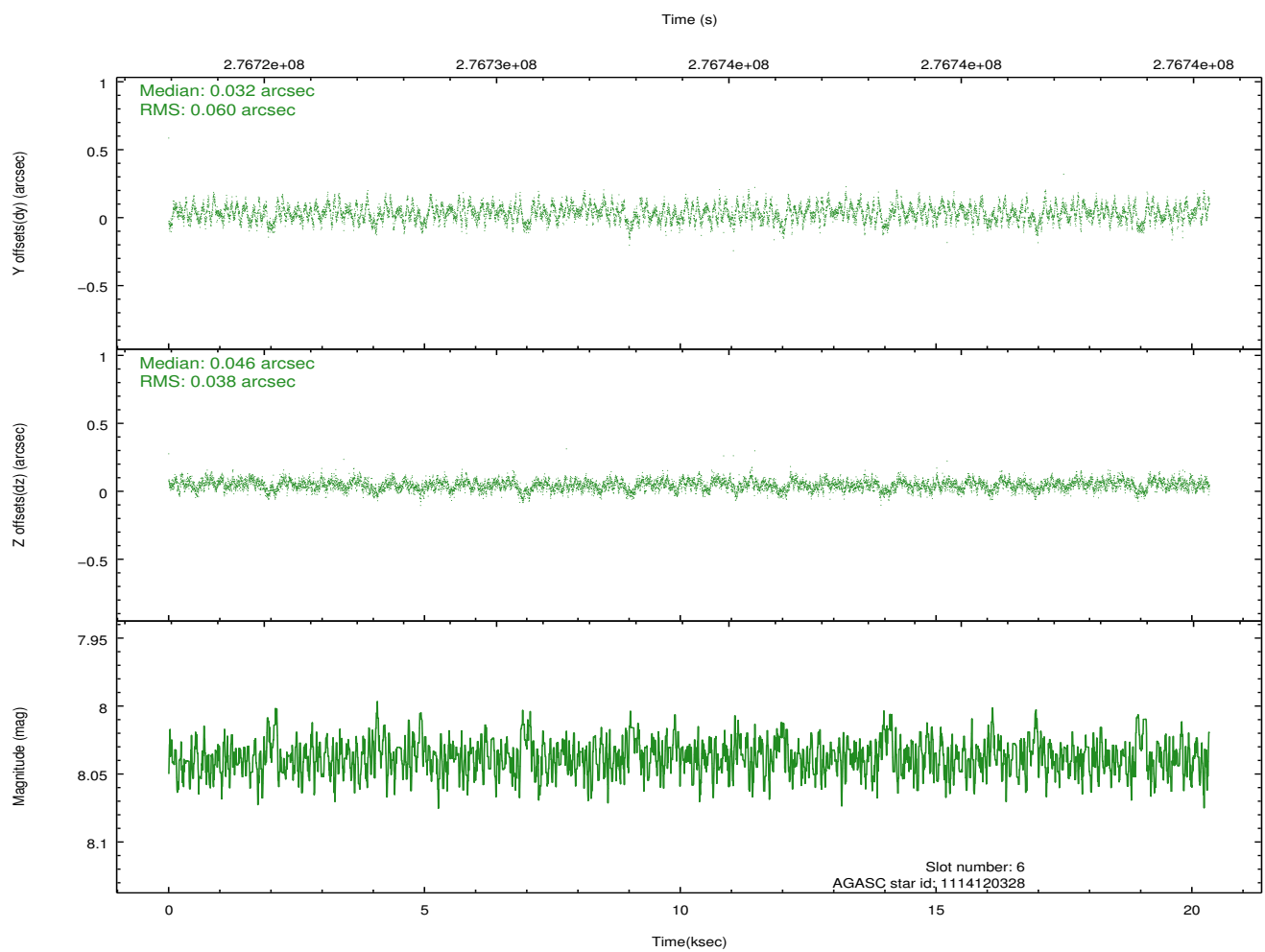
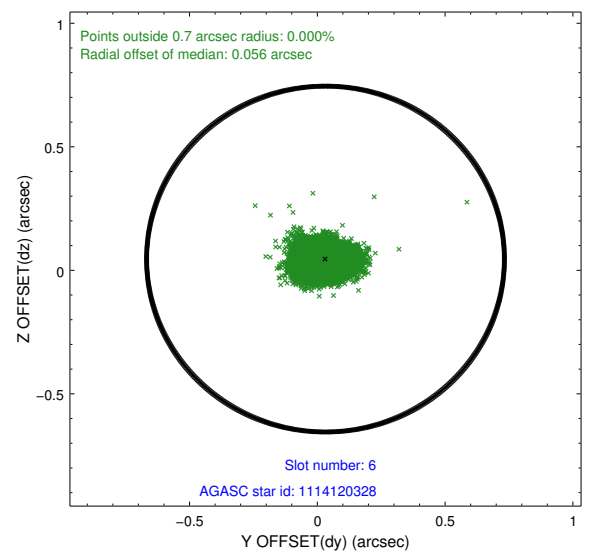
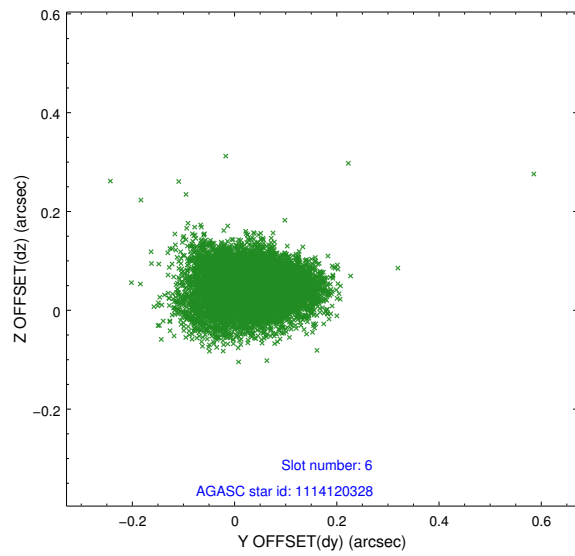
2.4.2 Slot 4



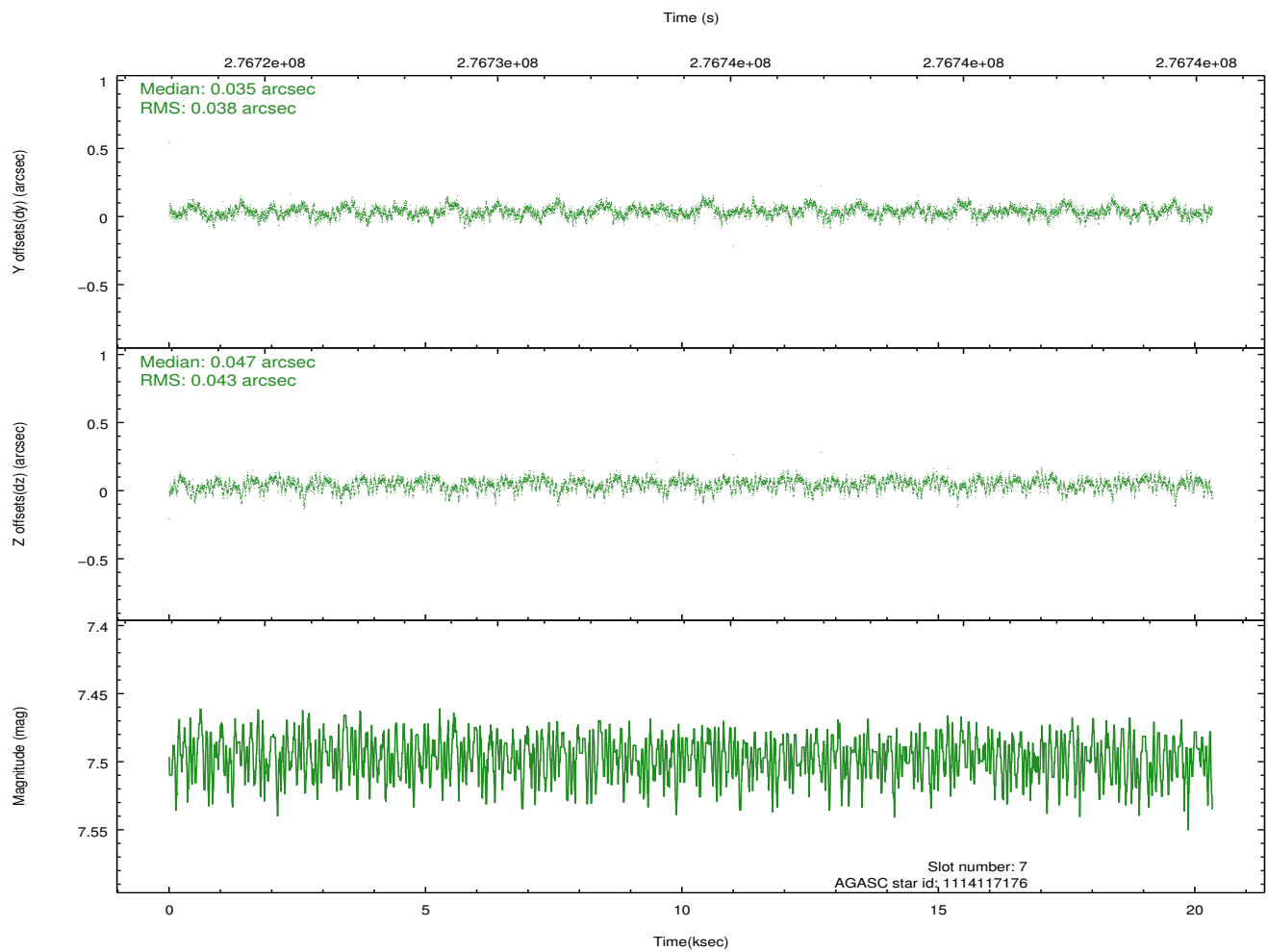
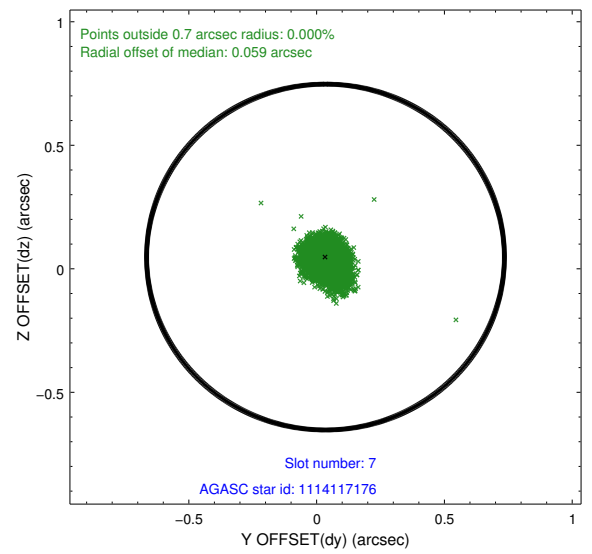
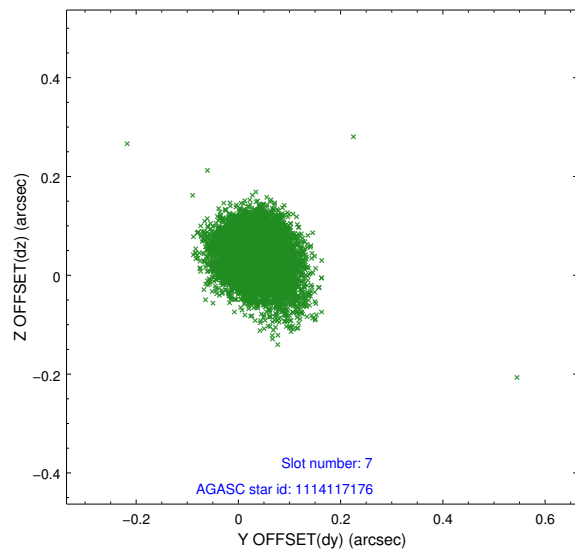
2.4.3 Slot 5



2.4.4 Slot 6

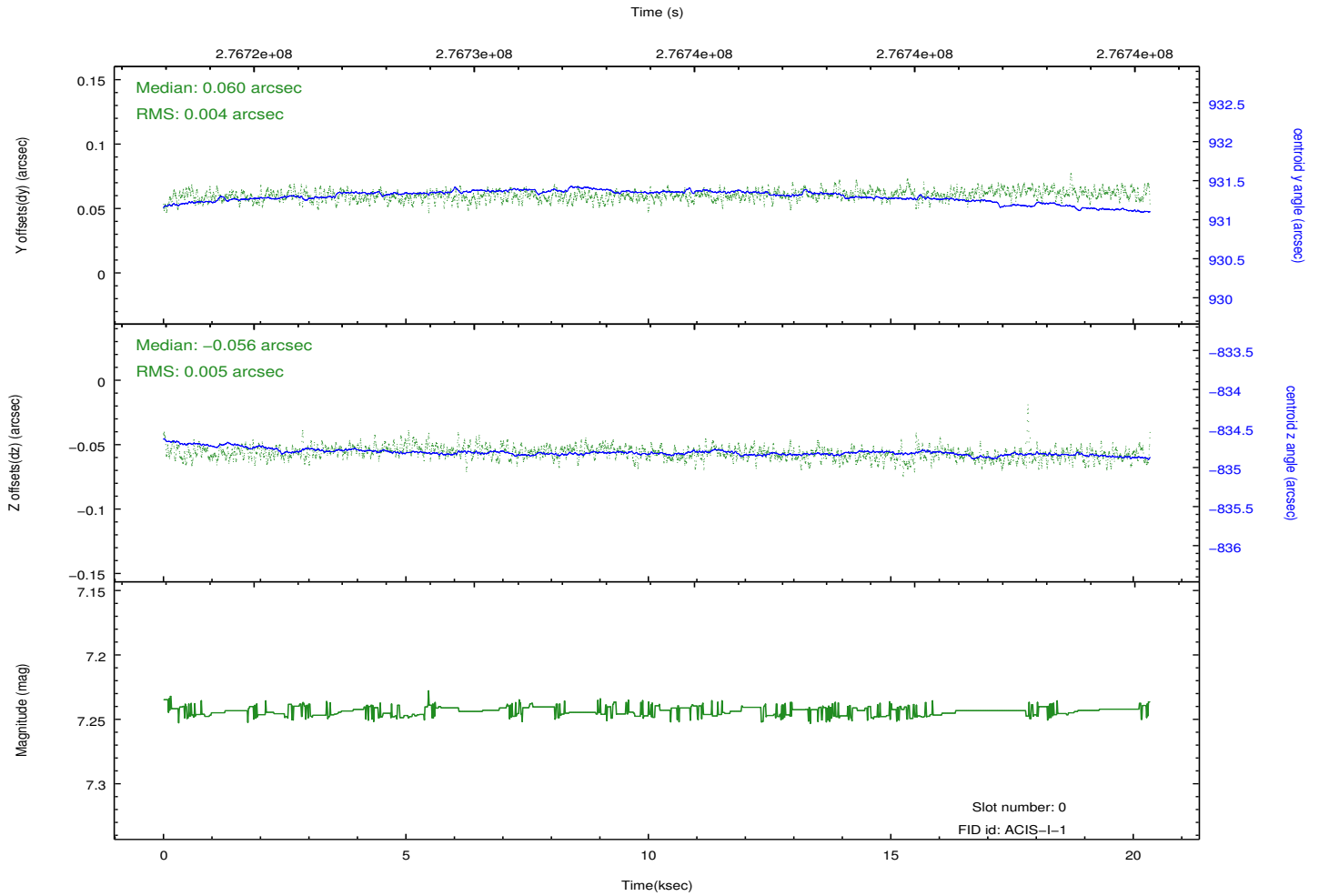
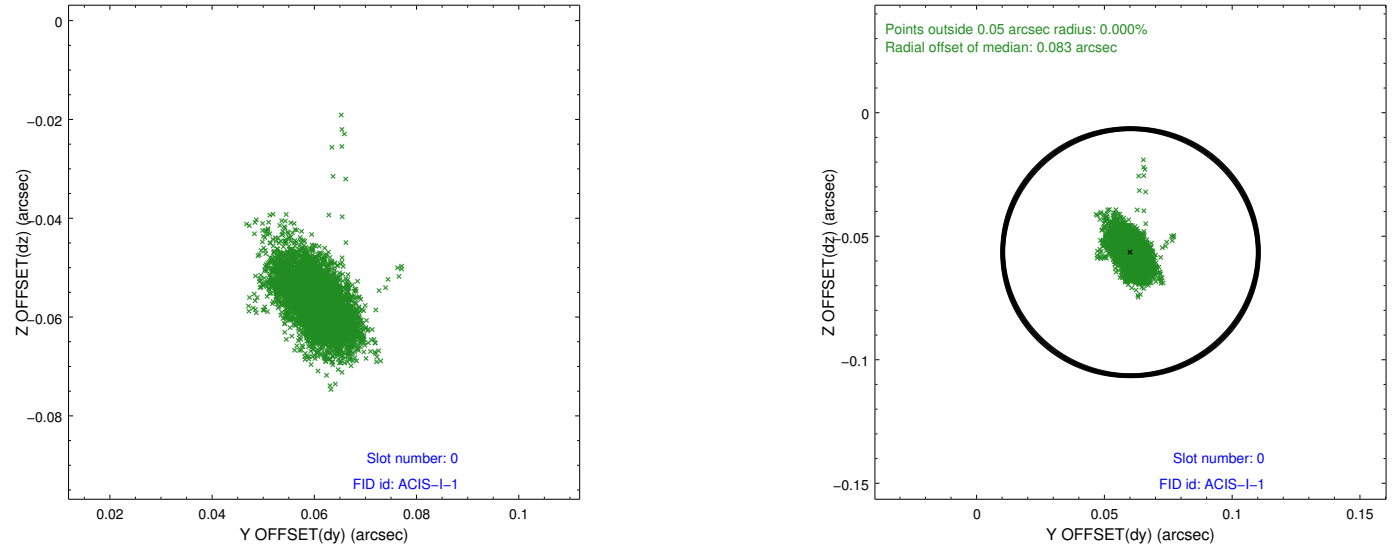


2.4.5 Slot 7

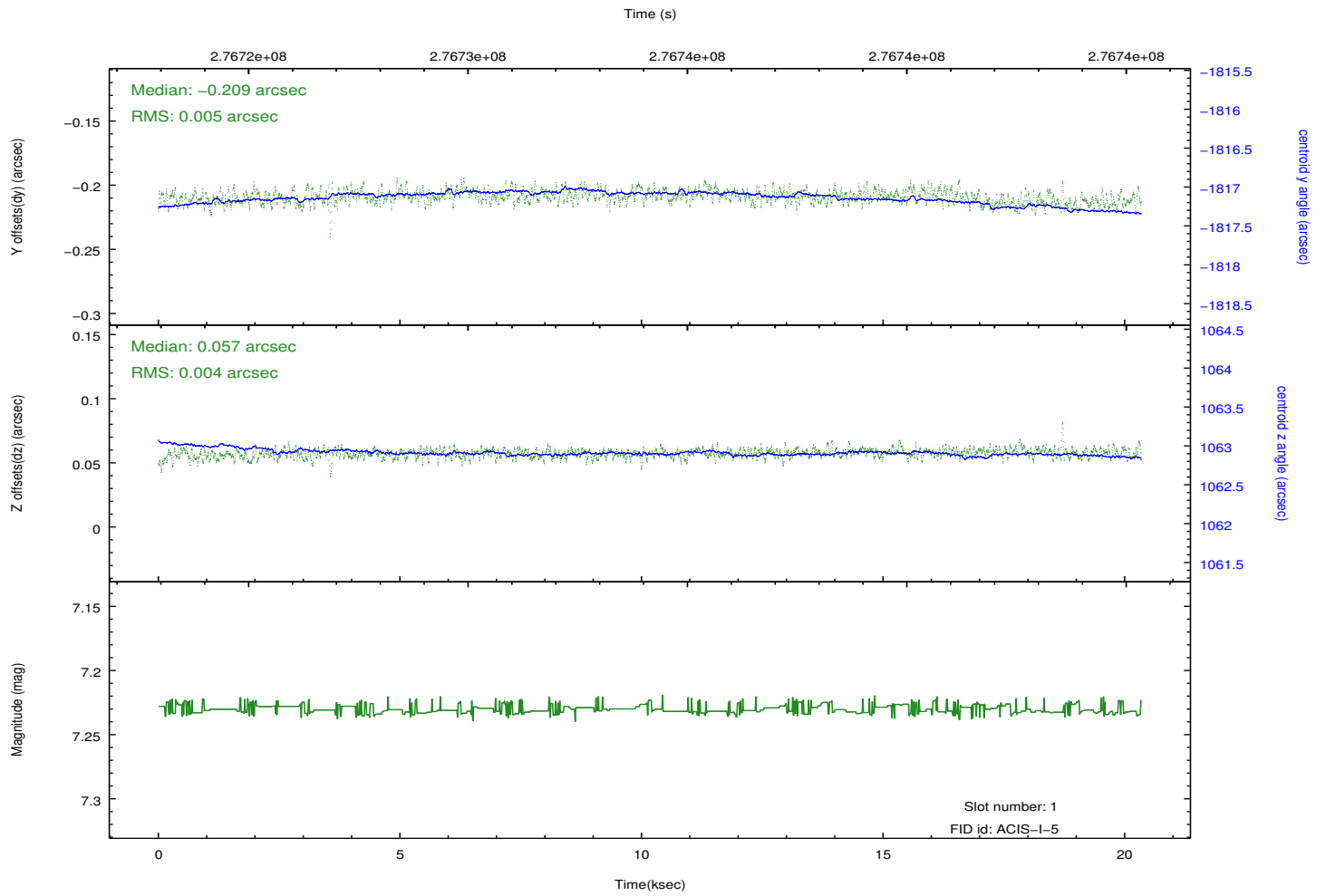
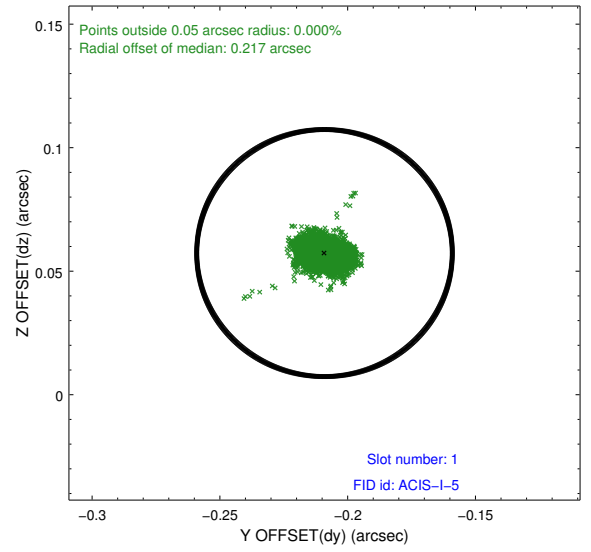
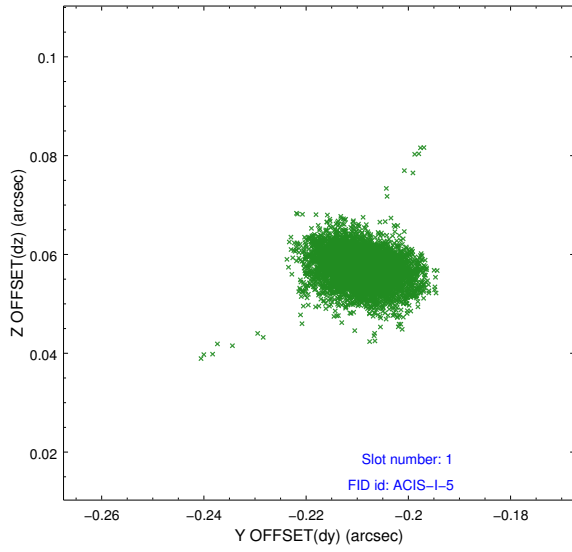


2.5 FID Slots

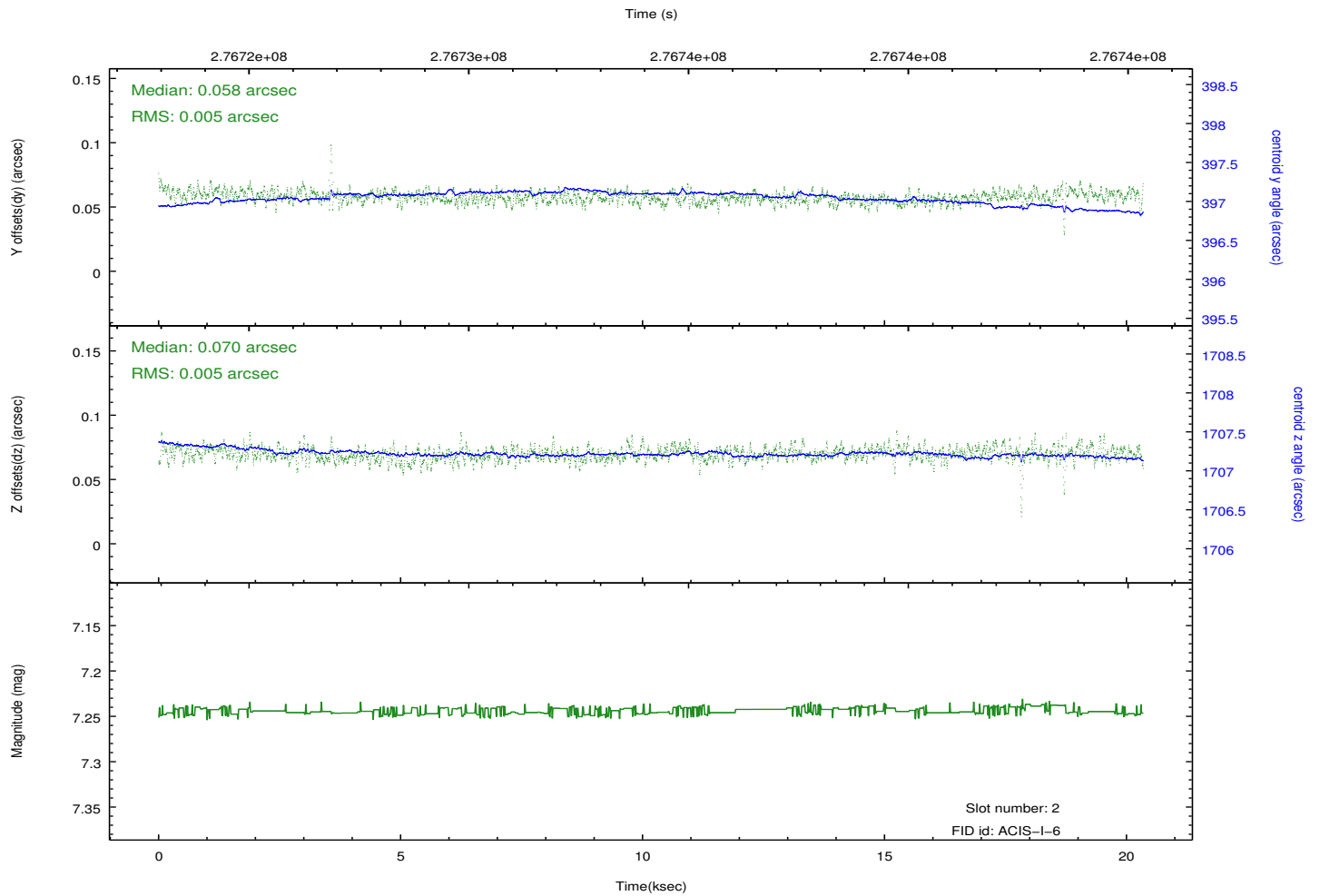
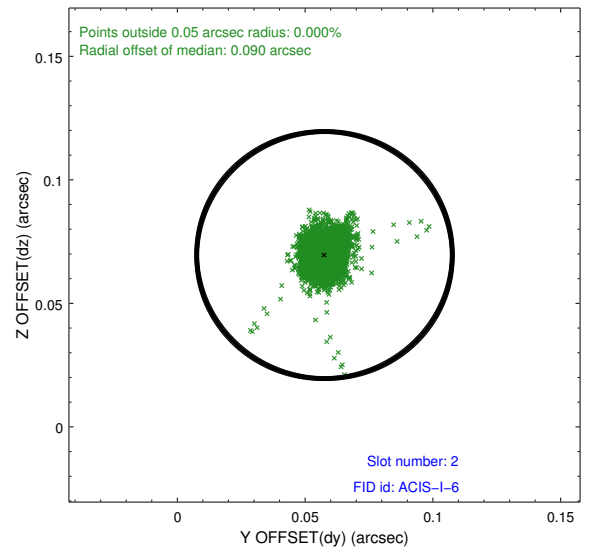
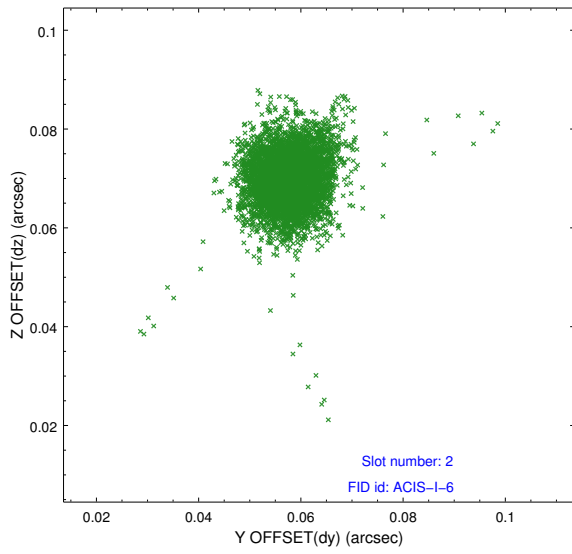
2.5.1 Slot 0



2.5.2 Slot 1



2.5.3 Slot 2



A Summary

A.1 Status

V&V Scientist	Beth Sundheim
V&V Date (YYYY-MM-DD)	2012.04.11
V&V Edition	1
V&V Disposition and Status	OK
V&V Charge Time	20.0446001

A.2 Comments