

V&V Reference Report

L2 ASCDS Version : 8.4.4

Observation 7043 - L2 Version 3
Chandra X-Ray Center

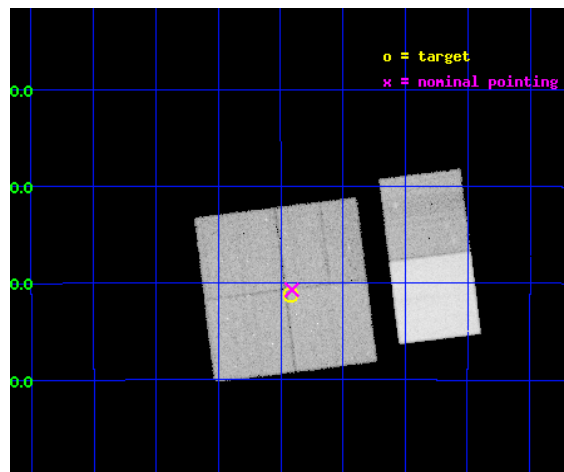
L2 Processing Date : Apr 23 2012

Contents

1	Front	2
2	OBI	3
2.1	OBI	3
2.1.1	Images	3
2.1.2	Bias	3
2.1.3	Parameters	4
2.1.4	Events	4
2.2	Compared Parameters	5
2.3	Aspect	6
2.4	Star Slots	9
2.4.1	Slot 3	9
2.4.2	Slot 4	10
2.4.3	Slot 5	11
2.4.4	Slot 6	12
2.4.5	Slot 7	13
2.5	FID Slots	14
2.5.1	Slot 0	14
2.5.2	Slot 1	15
2.5.3	Slot 2	16
A	Summary	17
A.1	Status	17
A.2	Comments	17

1 Front

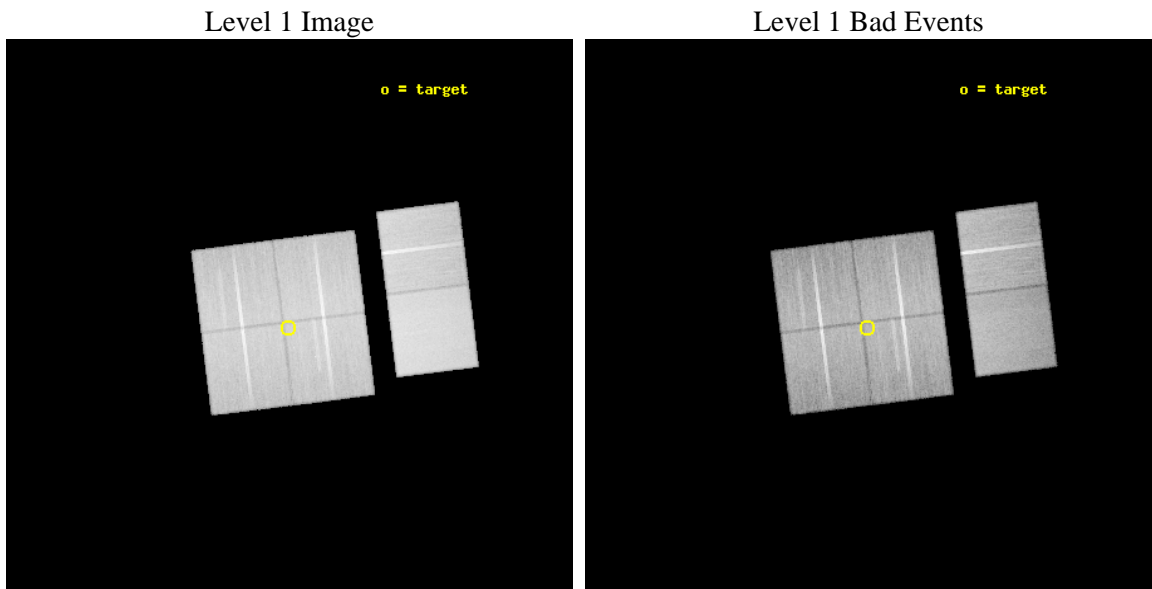
seq_num	900459	Sequence number
obs_id	7043	Observation id
title	A Legacy Study of Stellar Life Cycles at the Galactic Center	Propo
observer	Dr. Michael Muno	Principal investigator
object	Deep GCS 13	Source name
dtcycle	0	
cycle	P	events from which exps? Prim/Second/Both
ra_targ	265.729167	Observer's specified target RA [deg]
dec_targ	-29.519806	Observer's specified target Dec [deg]
ra_nom	265.72751578989	Nominal RA [deg]
dec_nom	-29.511858889882	Nominal Dec [deg]
roll_nom	82.900892658429	Nominal Roll [deg]
revision	3	Processing version of data
ontime	37427.158860385	Sum of GTIs [s]
livetime	36953.233638966	Livetime [s]
ontime0	37430.39986062	Sum of GTIs [s]
ontime1	37420.676889658	Sum of GTIs [s]
ontime2	37427.158860266	Sum of GTIs [s]
ontime3	37427.158860385	Sum of GTIs [s]
ontime6	37430.39986062	Sum of GTIs [s]
ontime7	37430.39986062	Sum of GTIs [s]
l2events	417329	Number of level 2 events



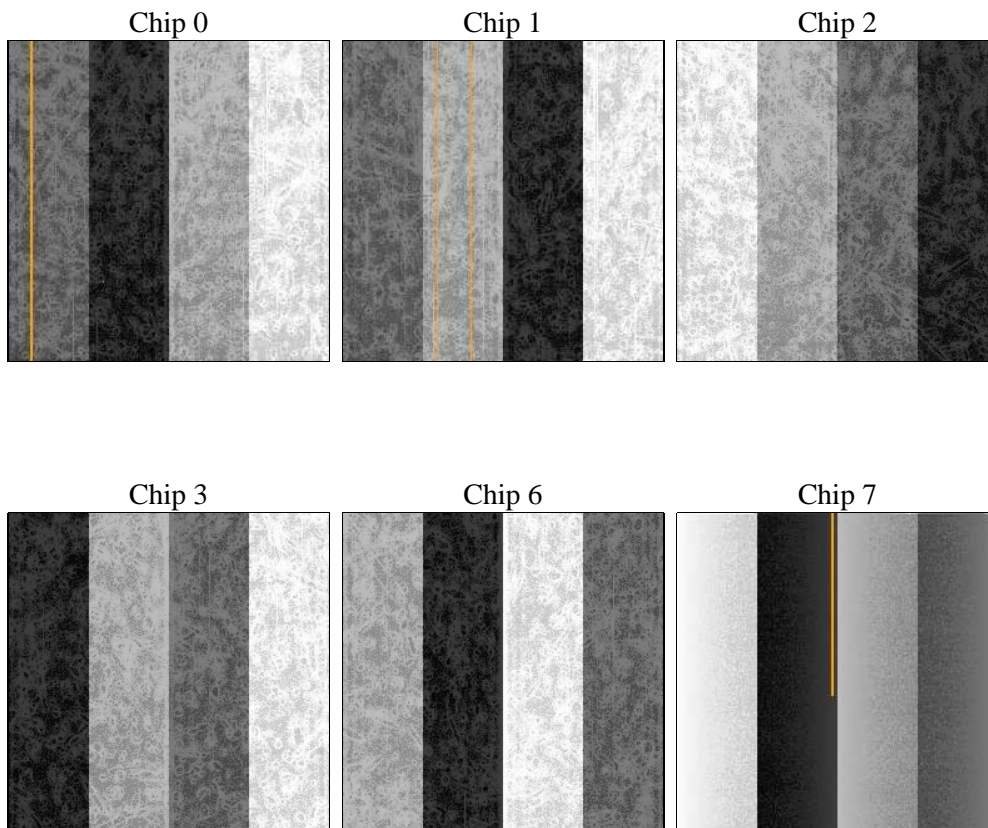
2 OBI

2.1 OBI

2.1.1 Images



2.1.2 Bias



2.1.3 Parameters

obi_num	0	Obi number	sched_exp_time	37252.728000	[s] Scheduled observation exposure time
ascdsver	8.4.4	Processing system revision	ontime	37427.158860385	Sum of GTIs [s]
caldbver	4.4.9	 	ontime0	37430.39986062	Sum of GTIs [s]
date	2012-04-23T22:39:27	Date and time of file creation	ontime1	37420.676889658	Sum of GTIs [s]
revision	3	Processing version of data	ontime2	37427.158860266	Sum of GTIs [s]
			ontime3	37427.158860385	Sum of GTIs [s]
			ontime6	37430.39986062	Sum of GTIs [s]
			ontime7	37430.39986062	Sum of GTIs [s]
			l1events	2358487	Number of level 1 events

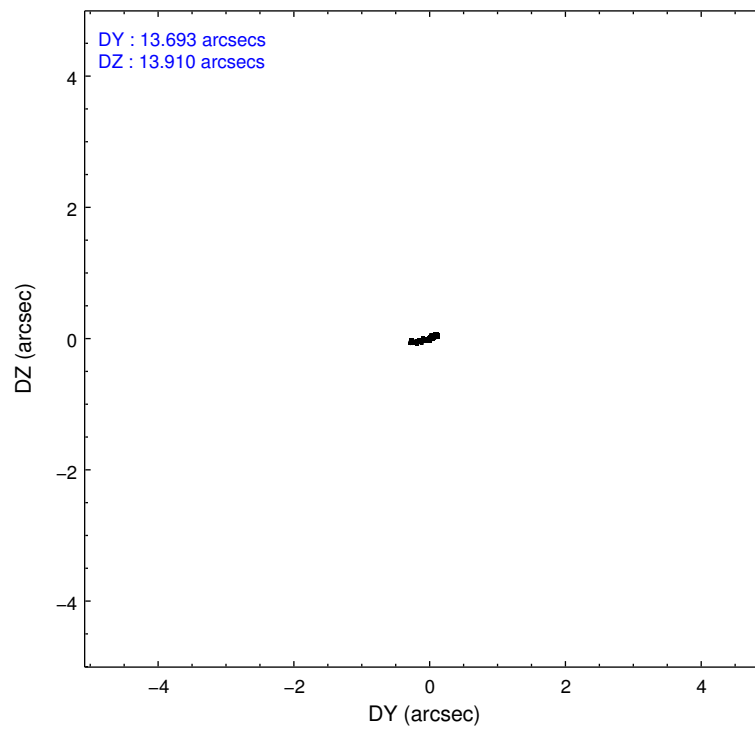
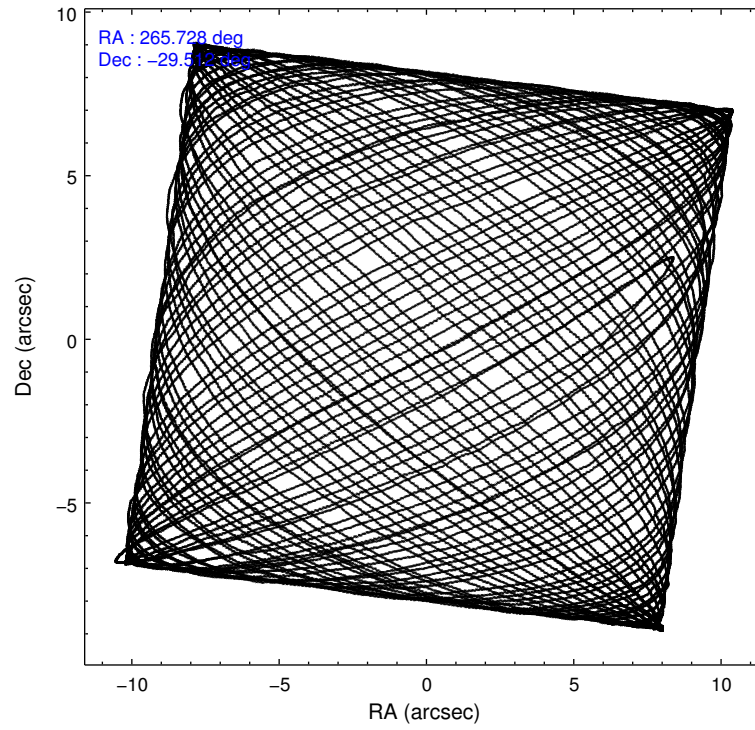
2.1.4 Events

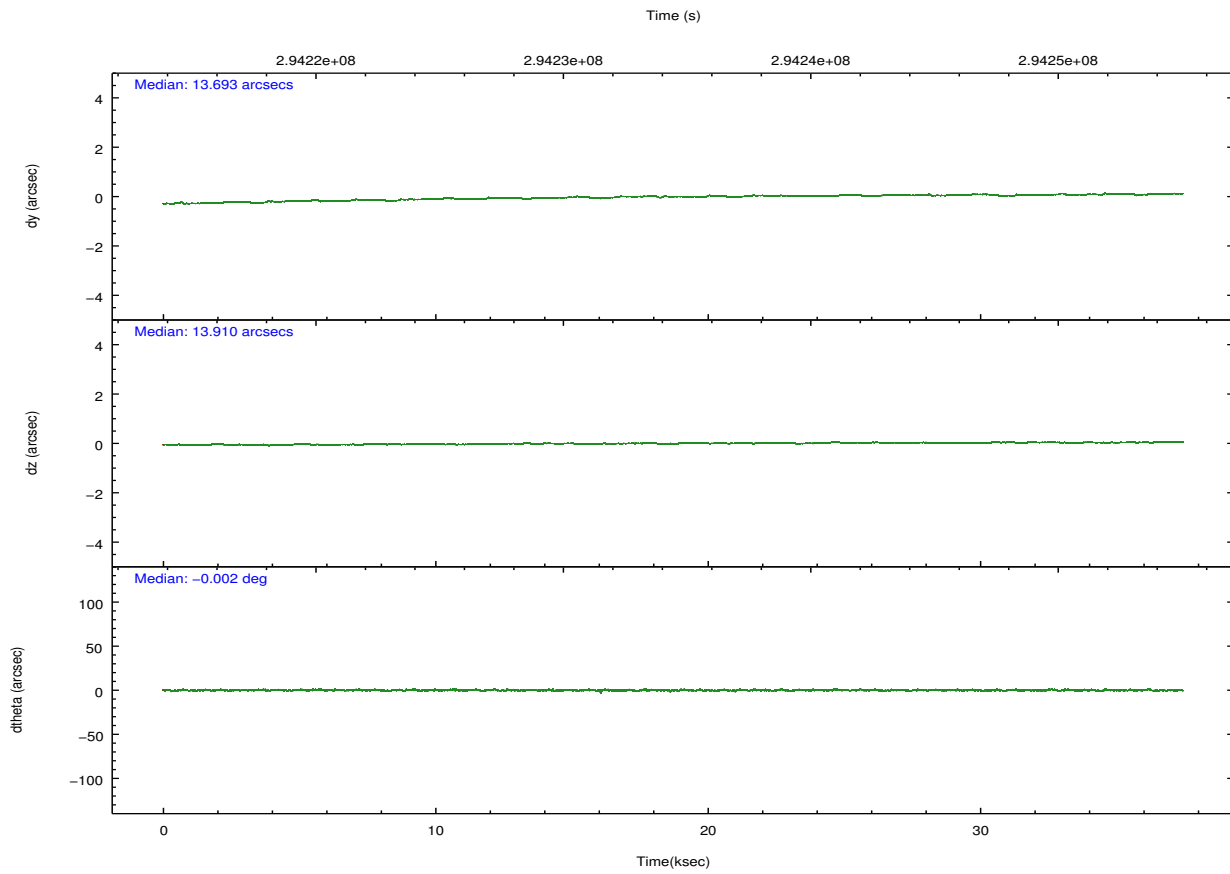
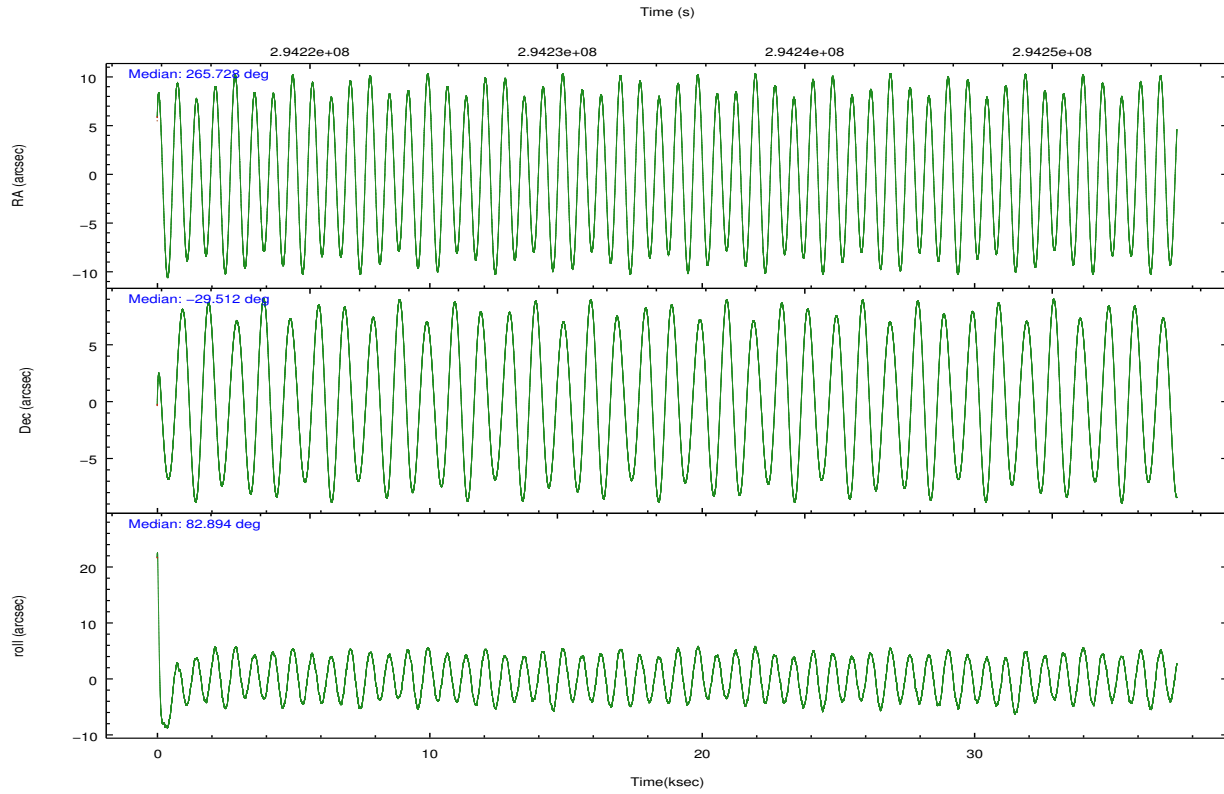
	ccd 0	ccd 1	ccd 2	ccd 3	ccd 6	ccd 7		ccd 0	ccd 1	ccd 2	ccd 3	ccd 6	ccd 7
level 1 events	350066	348664	379751	375149	394011	510846	grade 0 events	24396	25074	23113	25443	20978	18279
rejected events	300071	294273	333182	325192	346488	306156		6%	7%	6%	6%	5%	3%
rejected %	85%	84%	87%	86%	87%	59%	grade 1 events	242	245	333	345	208	529
								0%	0%	0%	0%	0%	0%
							grade 2 events	10710	12170	9889	9745	10610	43306
								3%	3%	2%	2%	2%	8%
							grade 3 events	4632	4907	4215	4643	4369	18253
								1%	1%	1%	1%	1%	3%
							grade 4 events	4334	4796	4226	4490	4253	18097
								1%	1%	1%	1%	1%	3%
							grade 5 events	15013	16028	14368	17154	17607	47651
								4%	4%	3%	4%	4%	9%
							grade 6 events	8143	9845	7640	8326	9608	117035
								2%	2%	2%	2%	2%	22%
							grade 7 events	282596	275599	315967	305003	326378	247696
								80%	79%	83%	81%	82%	48%

2.2 Compared Parameters

Parameter	Planned	Actual	Parameter	Planned	Actual
Instrument	ACIS	ACIS	Obspar format version number	7	7
Detector	ACIS-012367	ACIS-012367	Obspar file type	PREDICTED	ACTUAL
Grating	NONE	NONE	Obspar update status	NONE	UPDATED
Data mode	FAINT	FAINT	Number of optional ACIS chips dropped	0	0
Observation mode	POINTING	POINTING	On-chip summing requested	N	N
[deg] Pointing RA	265.739934	265.7275157898855	Subarray requested	NONE	NONE
[deg] Pointing Dec	-29.537133	-29.51185888988175	Alternating exposures requested	N	N
[deg] Pointing Roll	82.698313	82.90089265842943	[s] Primary exposure time	0.000000	3.2
[mm] SIM focus pos	-0.782348	-0.7809083437167272			
[mm] SIM defocus	0	0.001439871863259334			
[mm] SIM translation stage pos	-233.592463	-233.5874344608287			
[mm] SIM translation stage offset	0	-0.005018542100998502			
[s] Observation start time (MET)	294215885.184000	294213796.41574			
Observation start date	2007-04-29T06:37:00	2007-04-29T06:03:16			
[s] Observation end time (MET)	294253138.184000	294253372.18013			
Observation end date	2007-04-29T16:57:53	2007-04-29T17:02:52			
Read mode	TIMED	TIMED			

2.3 Aspect





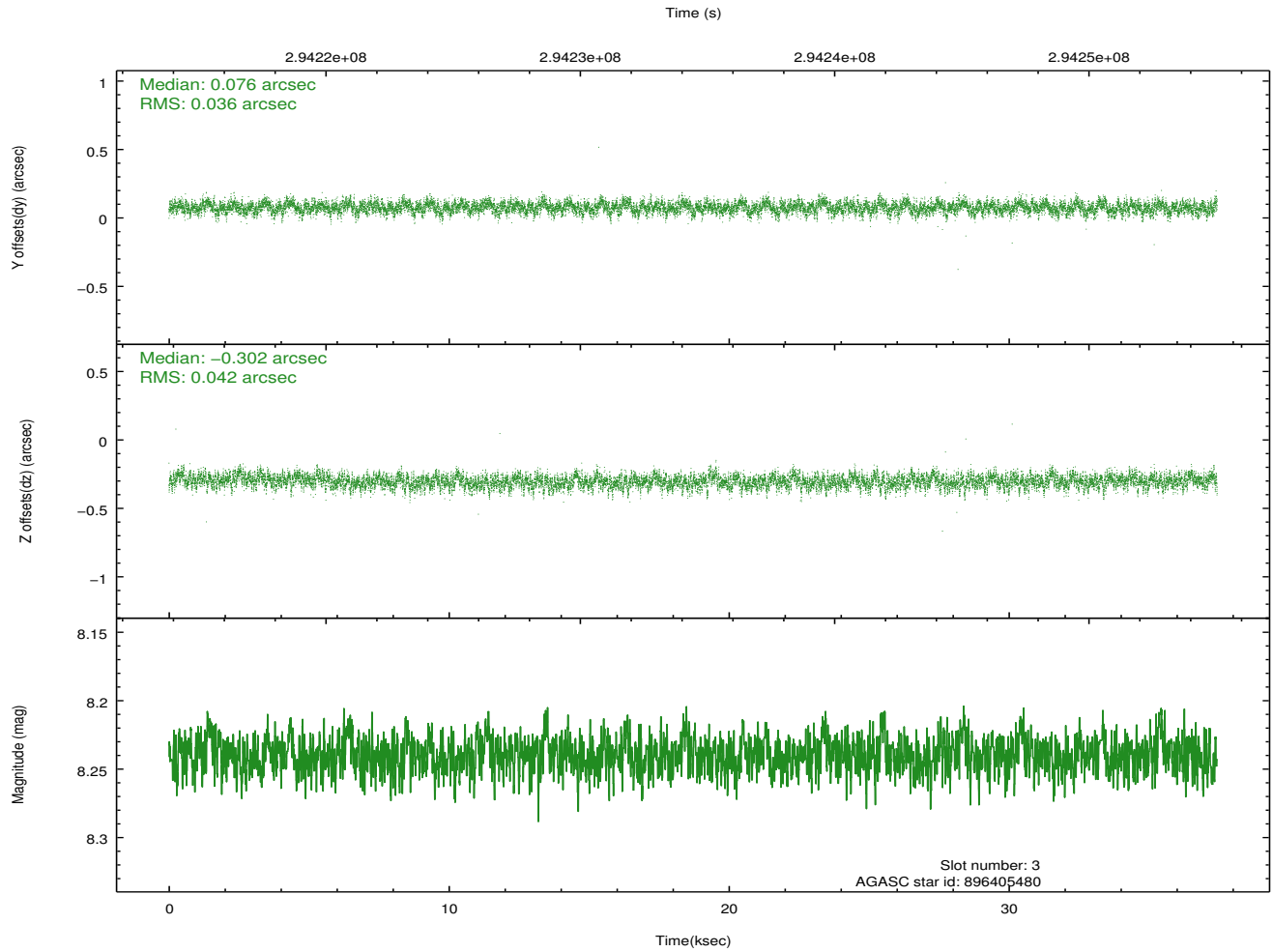
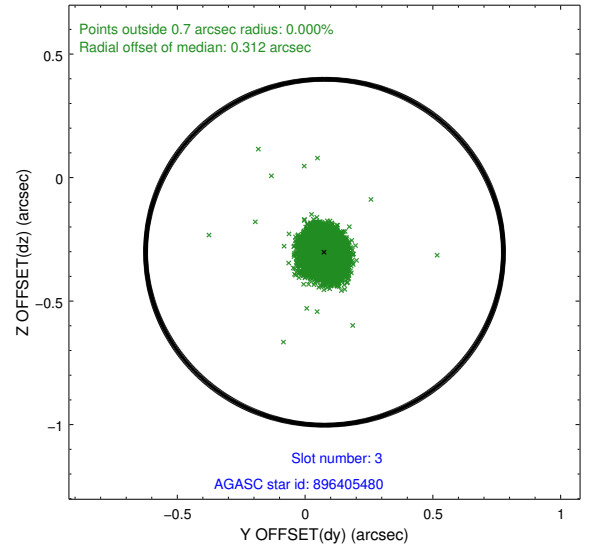
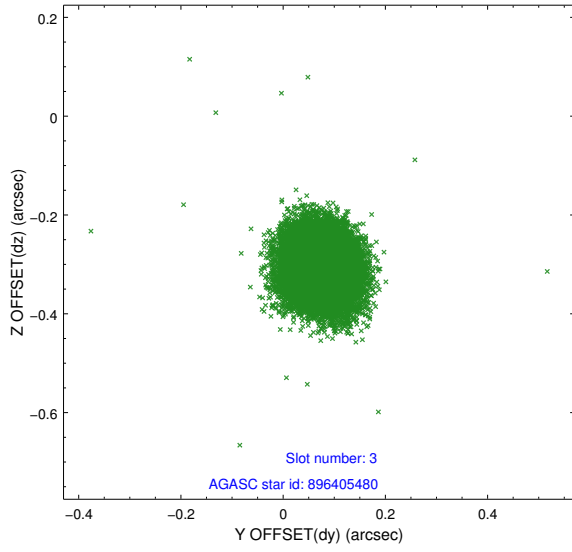
Slot Statistics

slot	status	id	mag	n_pts	med_dy	med_dz	dr1	dr2	ra	dec	mean_y	mean_z
0	FID	ACIS-I-1	7.23	9131	0.036	0.019	0.009	0.018	0.000000	0.000000	925.88	-837.45
1	FID	ACIS-I-5	7.22	9131	-0.224	0.043	0.008	0.014	0.000000	0.000000	-1822.48	1060.03
2	FID	ACIS-I-6	7.24	9131	0.097	0.009	0.010	0.017	0.000000	0.000000	391.44	1704.54
3	GUIDE	896405480	8.24	18249	0.076	-0.302	0.058	0.094	265.220460	-29.599691	-433.58	1583.45
4	GUIDE	896541168	8.15	18262	0.068	0.181	0.069	0.110	266.319970	-29.850801	-894.02	-1940.20
5	GUIDE	966924920	8.08	18189	0.069	0.146	0.053	0.085	265.875401	-30.176961	-2231.05	-711.16
6	GUIDE	896402976	7.47	18259	-0.186	-0.240	0.060	0.101	265.099474	-28.923203	1929.94	2281.99
7	GUIDE	896534128	8.71	18184	-0.029	0.213	0.087	0.139	266.503837	-29.080853	1927.54	-2175.55

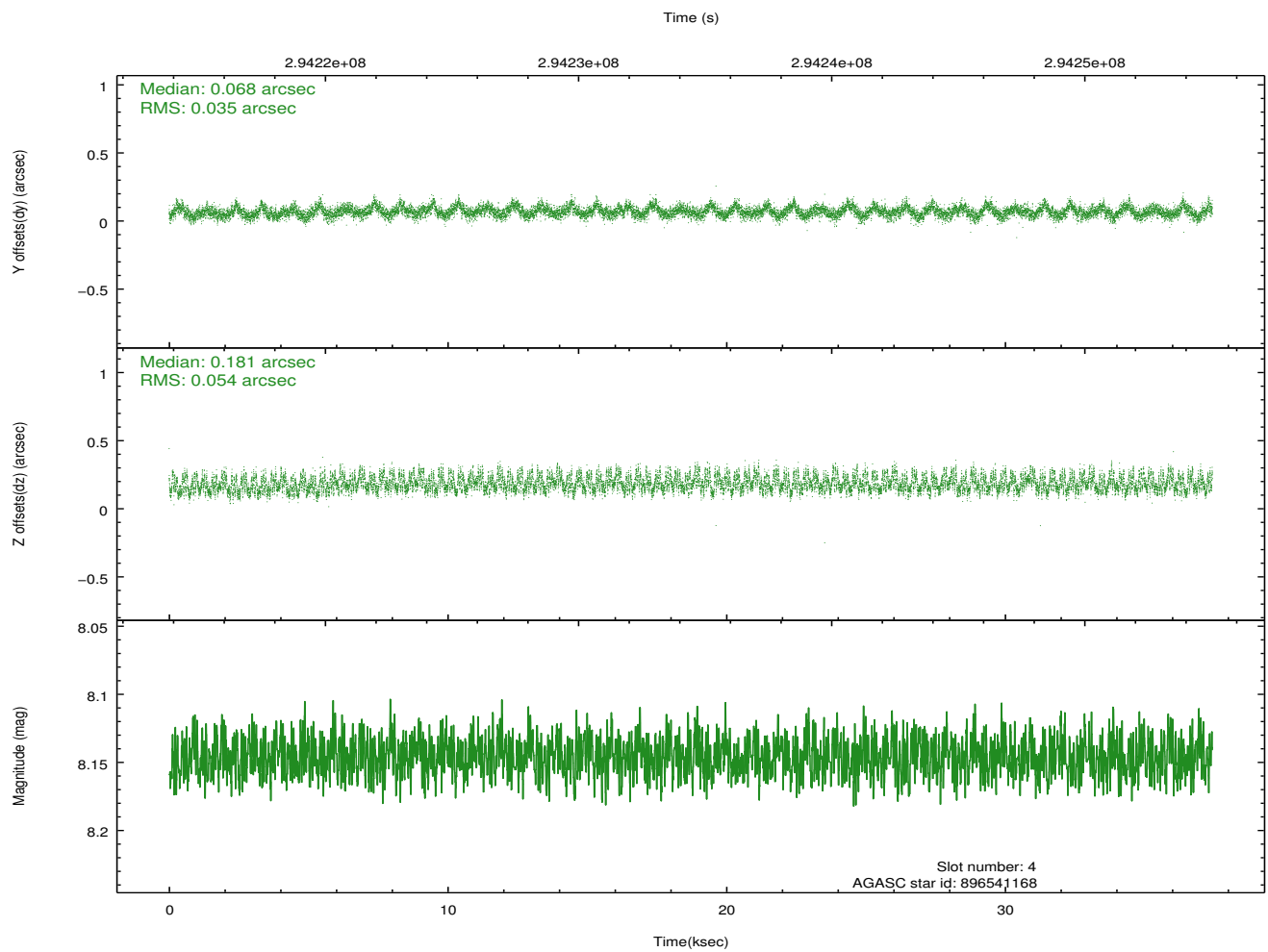
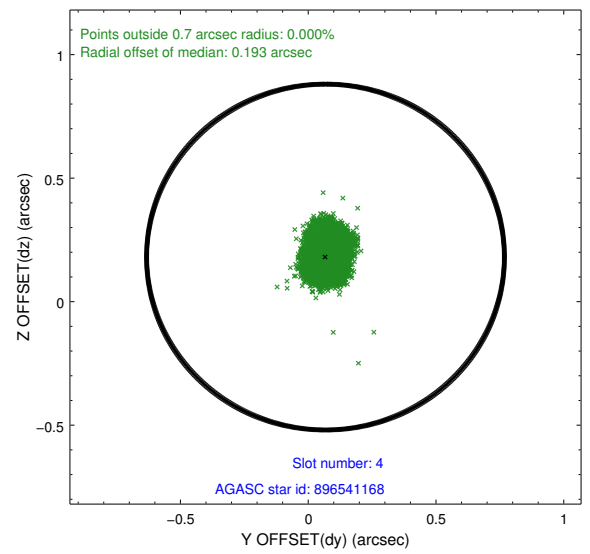
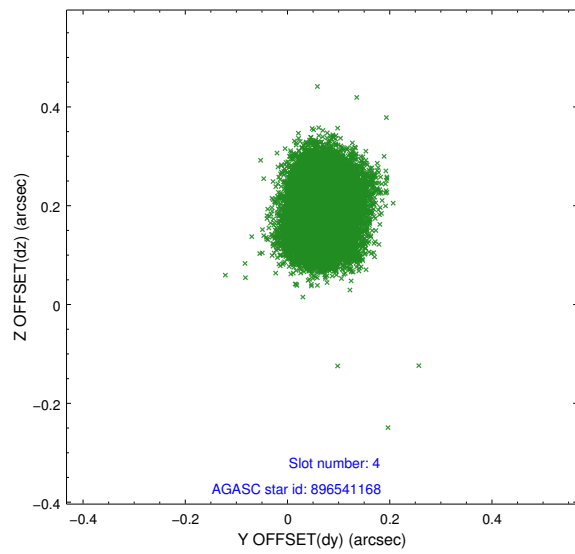
∞

2.4 Star Slots

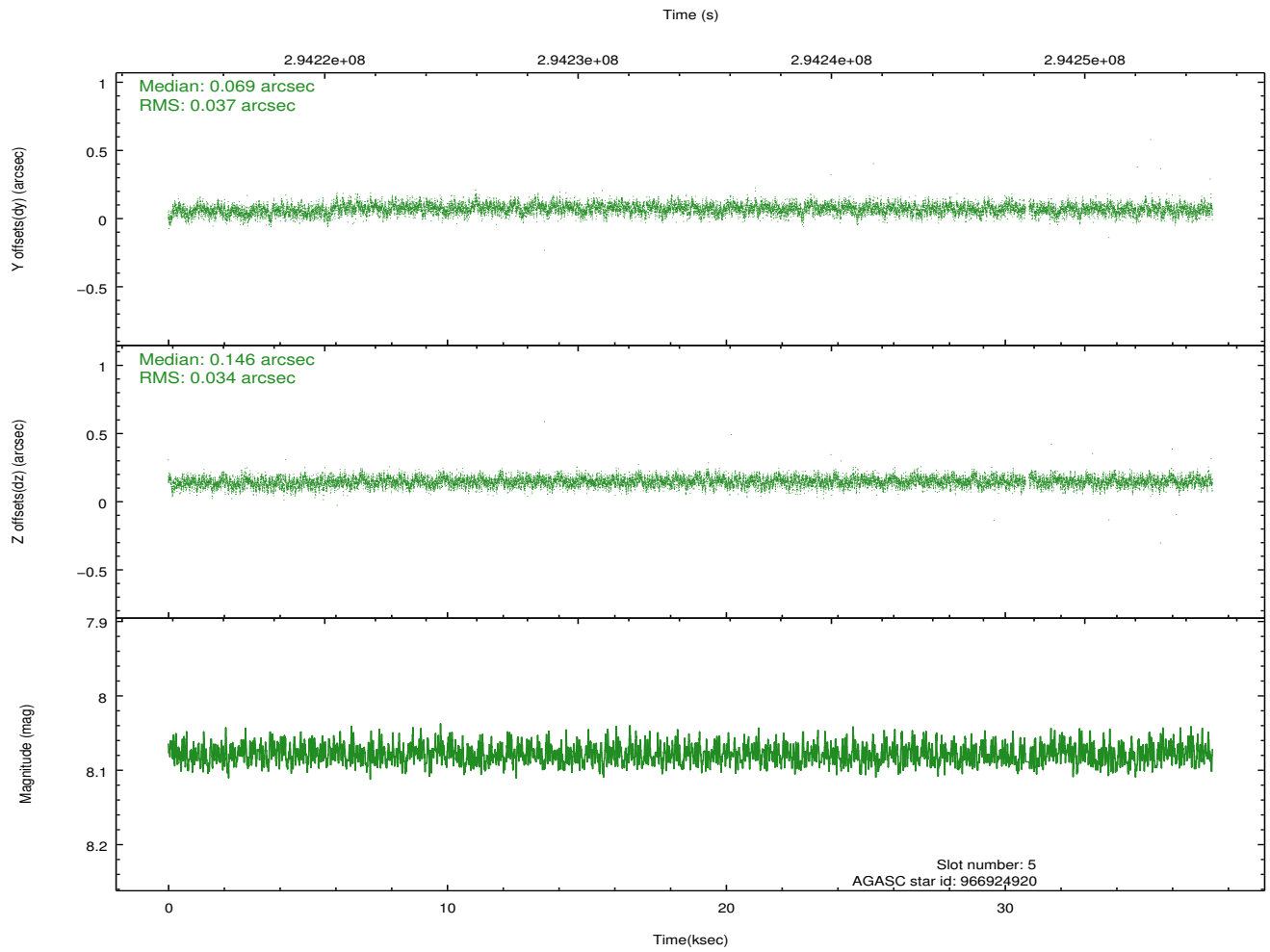
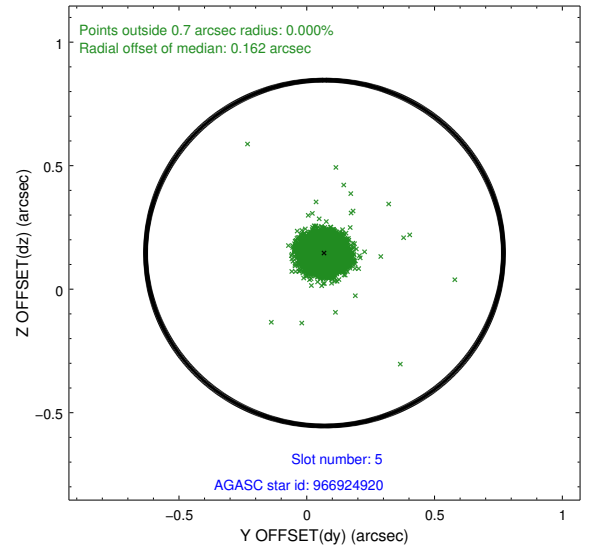
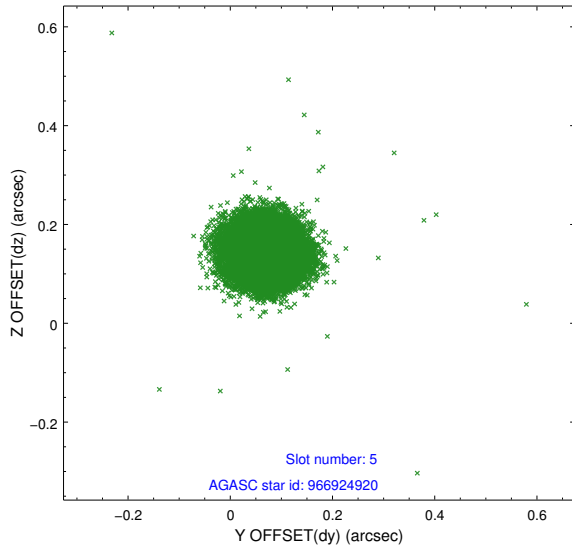
2.4.1 Slot 3



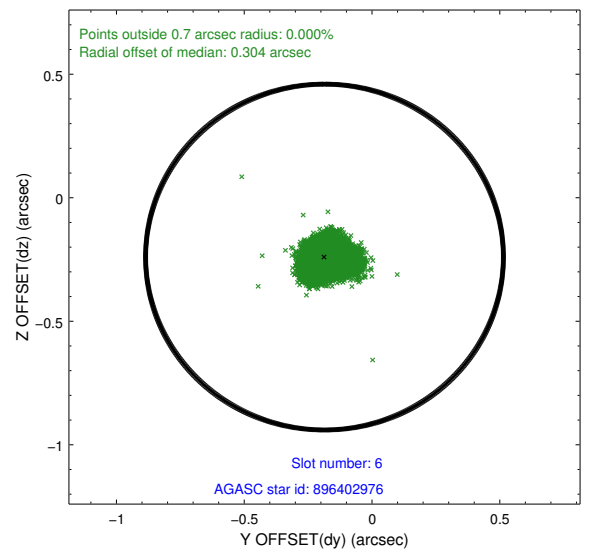
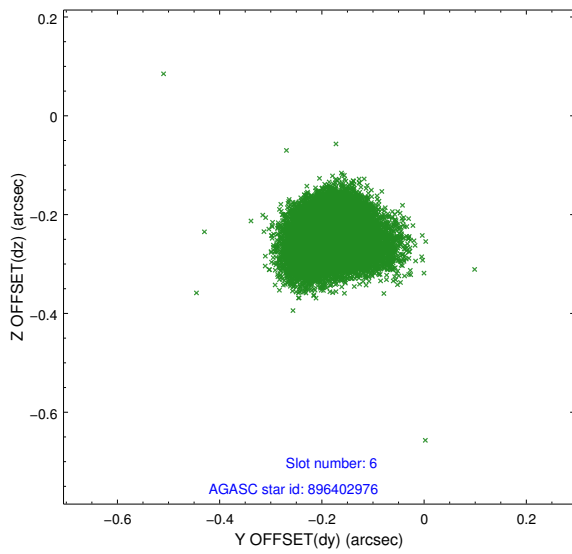
2.4.2 Slot 4



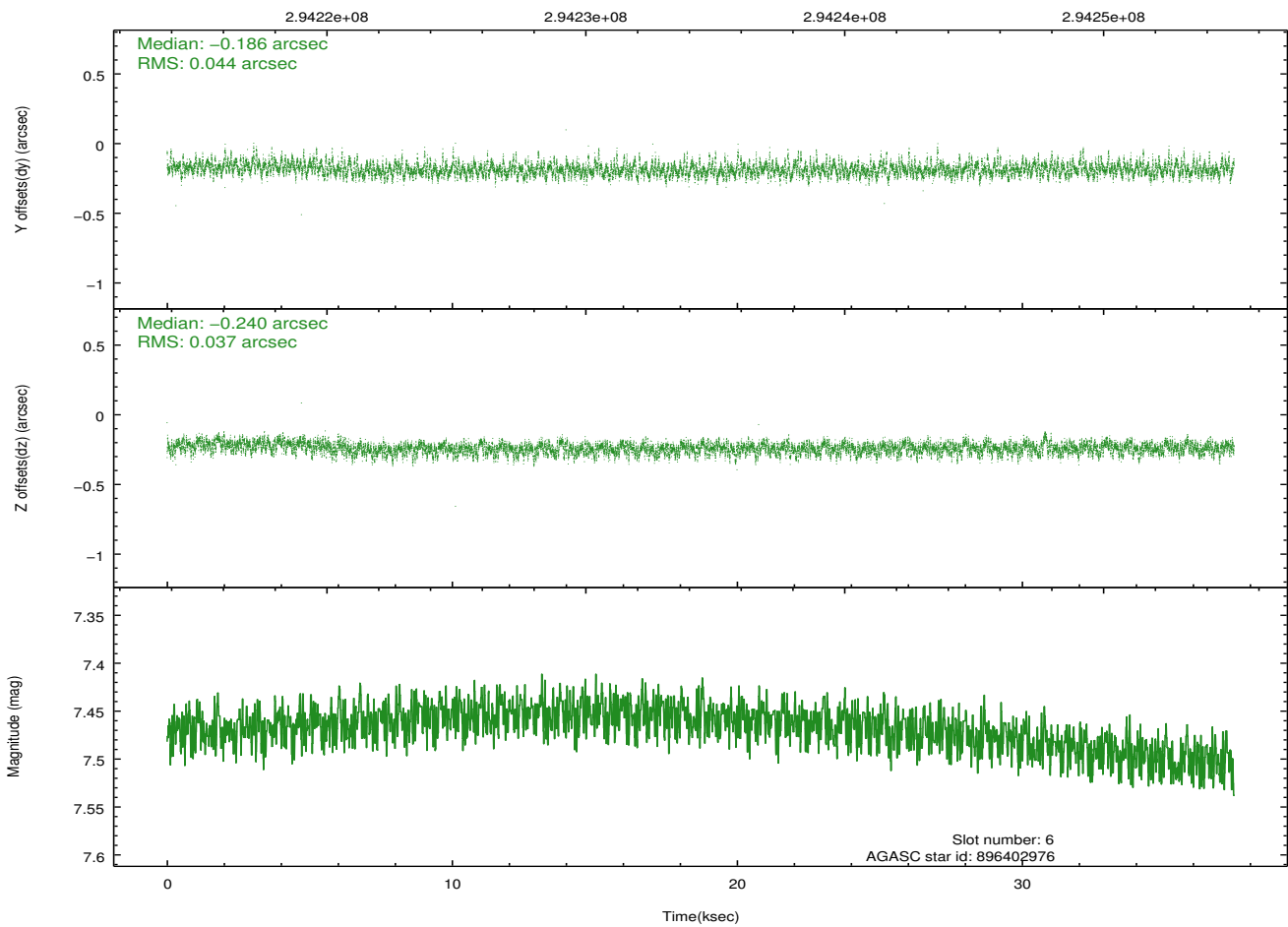
2.4.3 Slot 5



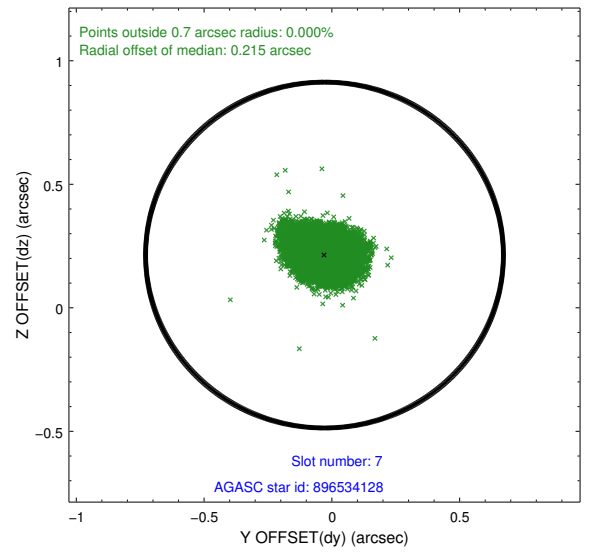
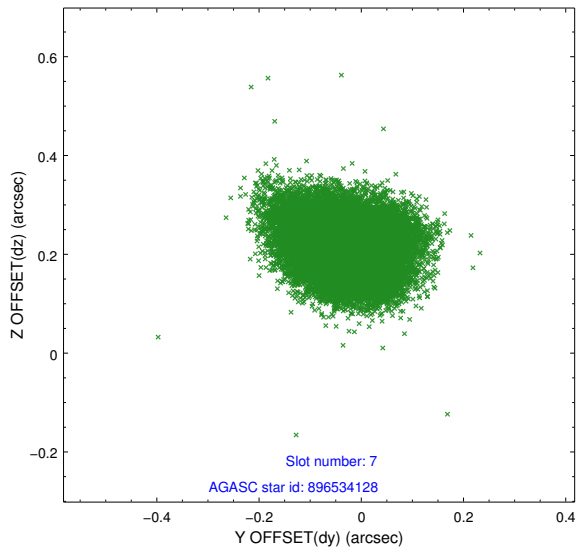
2.4.4 Slot 6



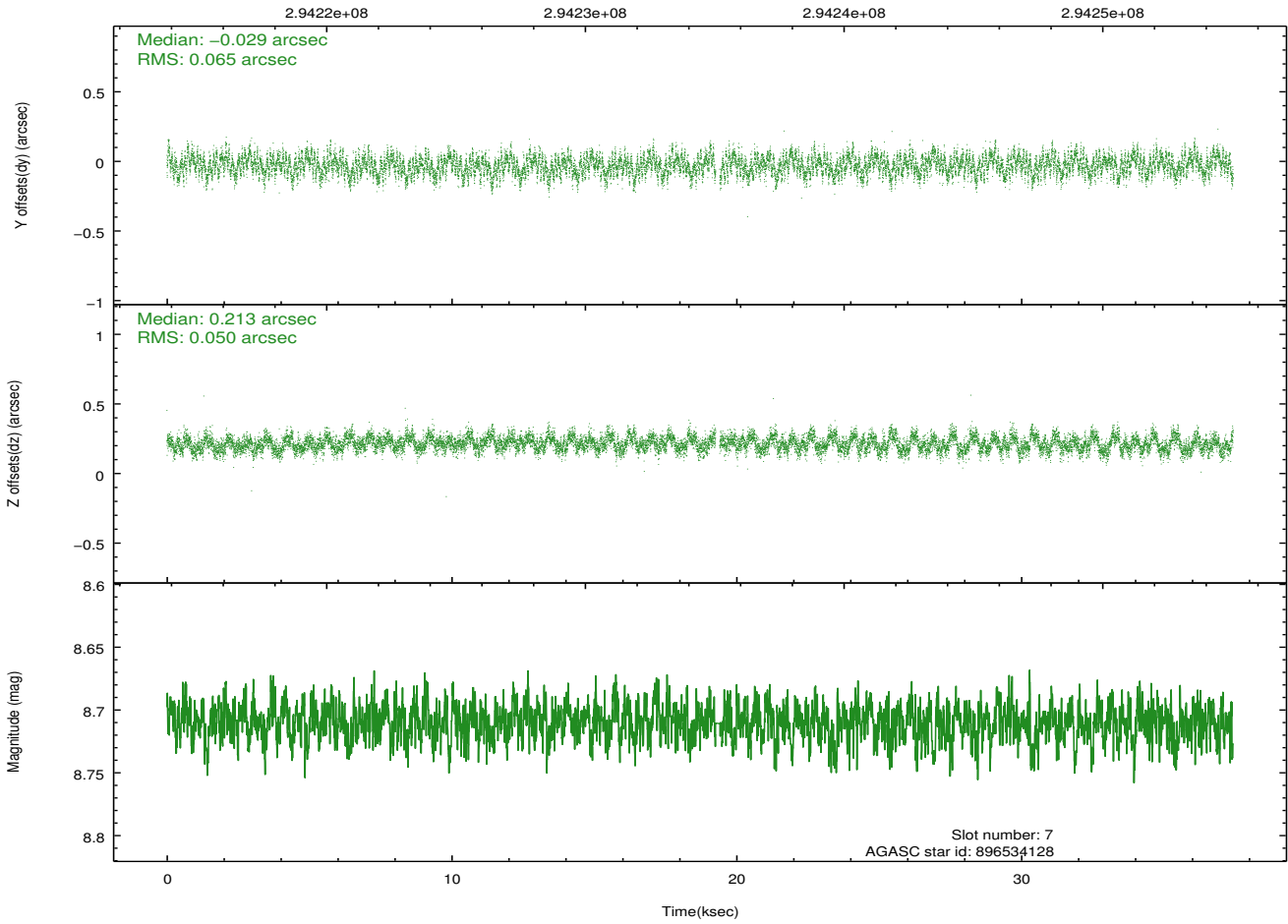
Time (s)



2.4.5 Slot 7

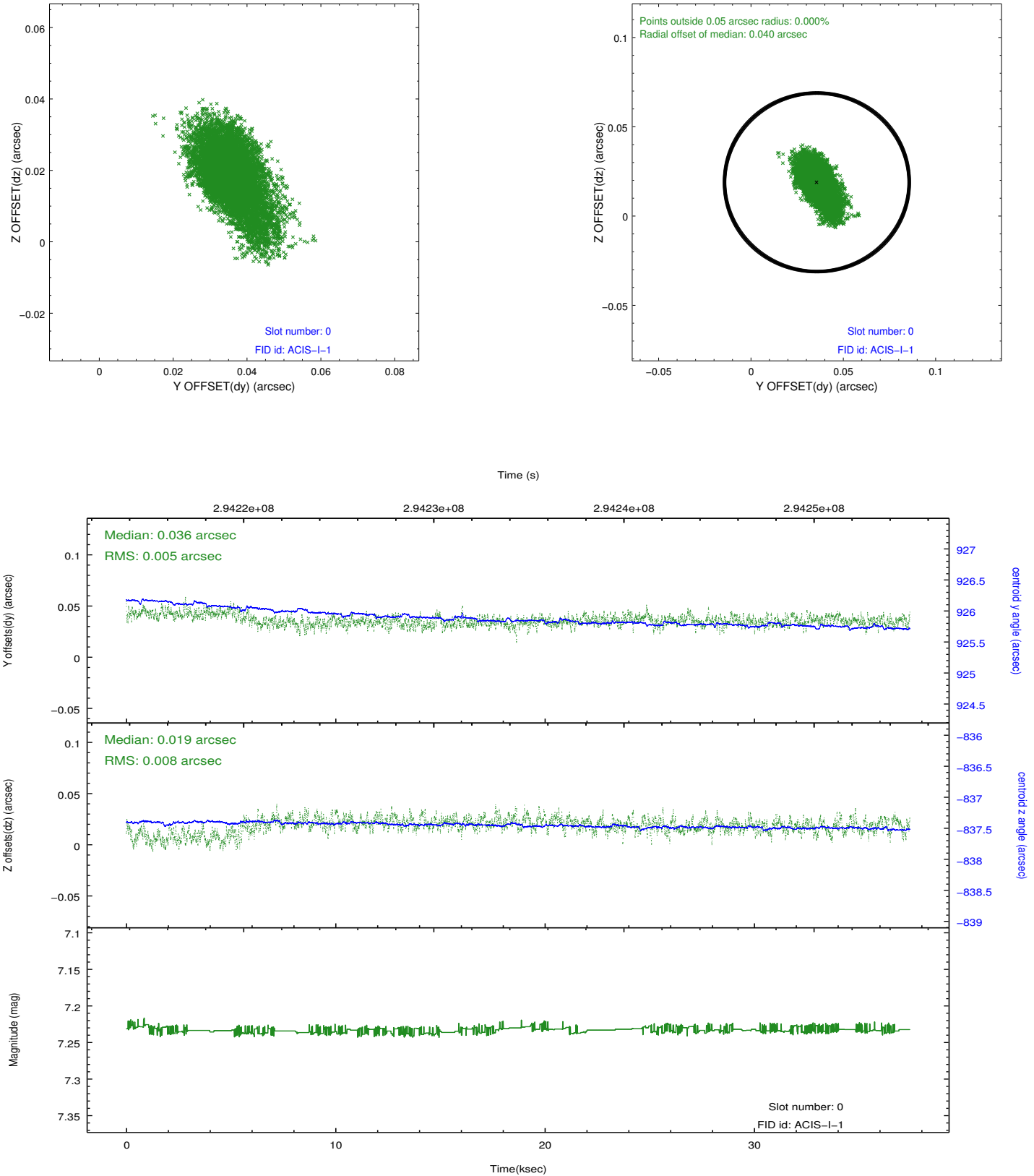


Time (s)

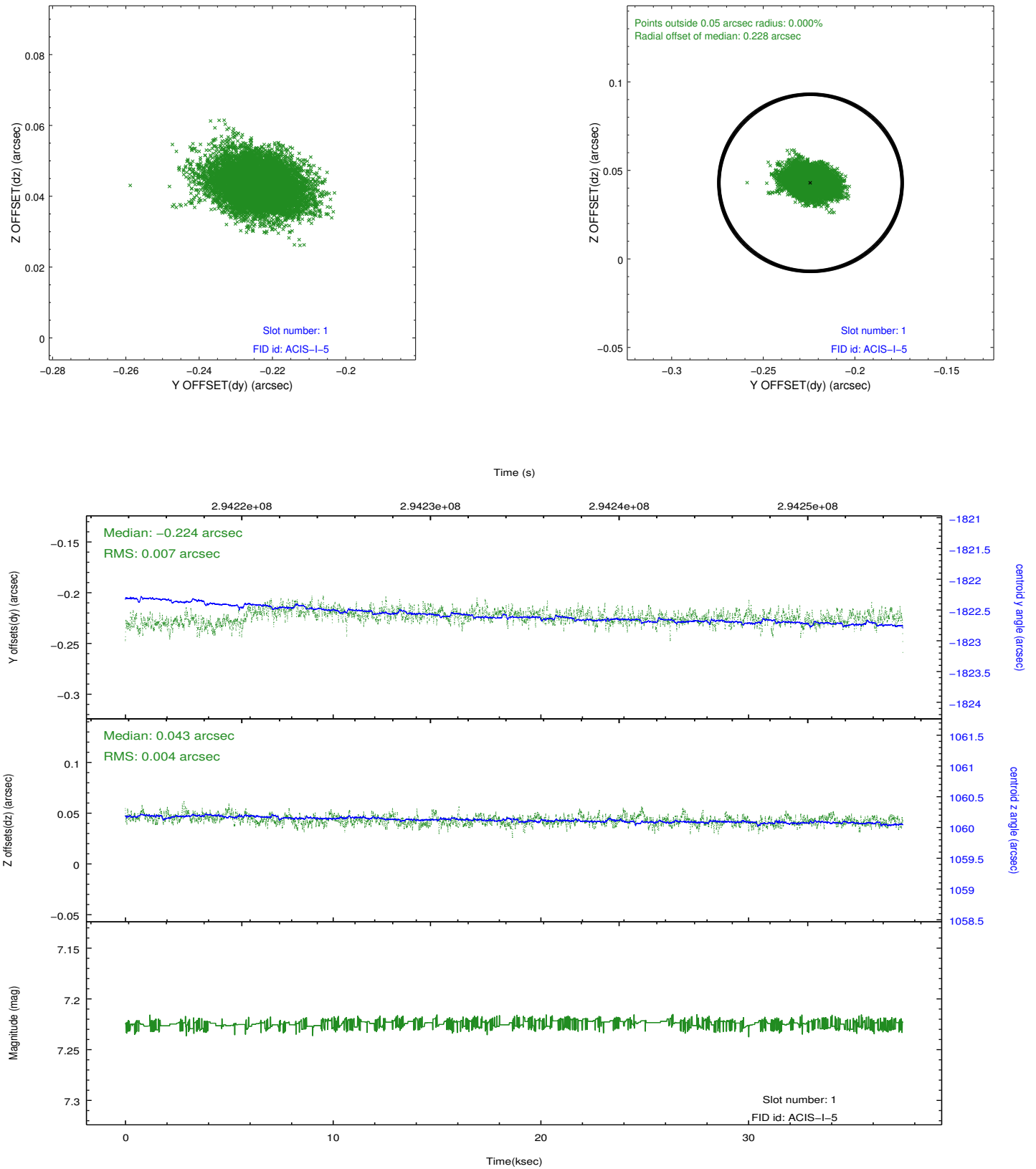


2.5 FID Slots

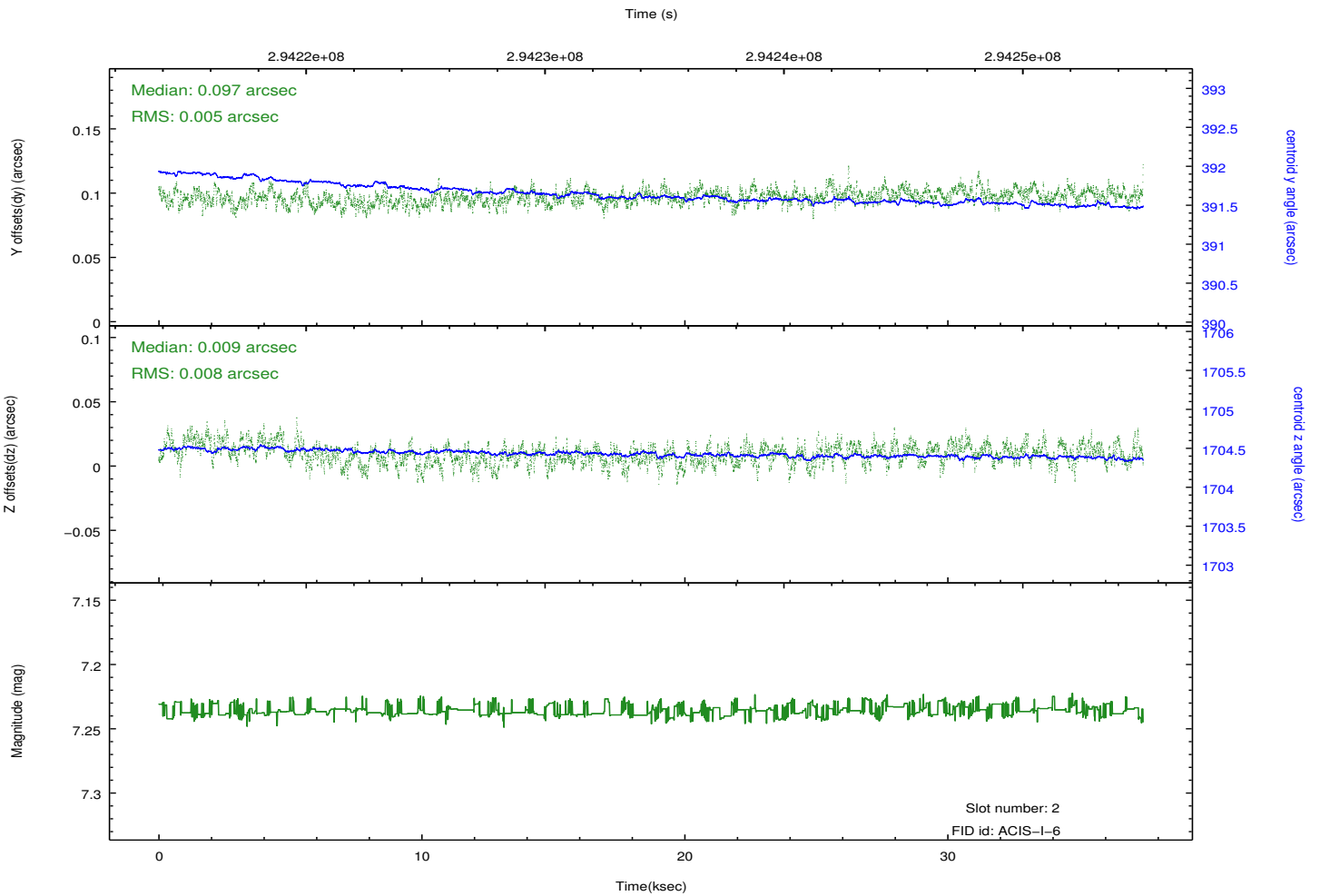
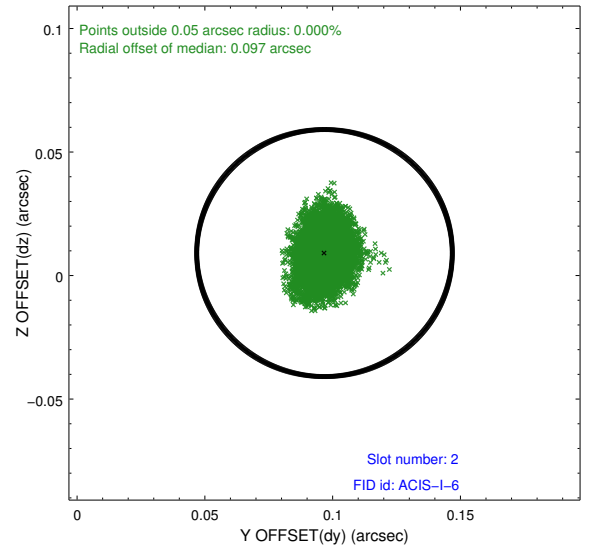
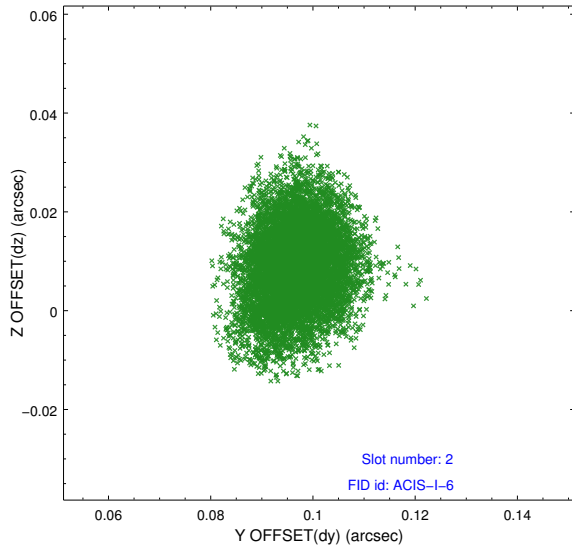
2.5.1 Slot 0



2.5.2 Slot 1



2.5.3 Slot 2



A Summary

A.1 Status

V&V Scientist	Jen Lauer
V&V Date (YYYY-MM-DD)	2012.04.24
V&V Edition	1
V&V Disposition and Status	OK
V&V Charge Time	37.4271588

A.2 Comments

Roll preference not met, preferred roll 88 - 118 degrees, actual roll 83 degrees.