

# V&V Reference Report

## L2 ASCDS Version : 8.4.3.1

Observation 7143 - L2 Version 2  
Chandra X-Ray Center

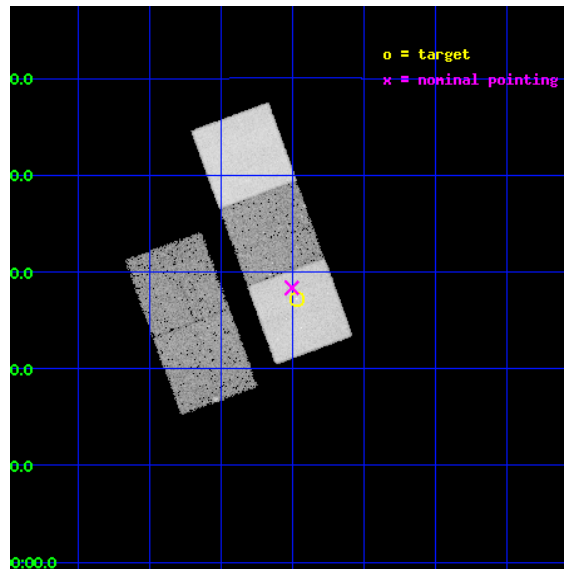
L2 Processing Date : Mar 26 2012

## Contents

<b>1</b>	<b>Front</b>	<b>2</b>
<b>2</b>	<b>OBI</b>	<b>3</b>
2.1	OBI . . . . .	3
2.1.1	Images . . . . .	3
2.1.2	Bias . . . . .	3
2.1.3	Parameters . . . . .	4
2.1.4	Events . . . . .	4
2.2	Compared Parameters . . . . .	5
2.3	Aspect . . . . .	6
2.4	Star Slots . . . . .	9
2.4.1	Slot 3 . . . . .	9
2.4.2	Slot 4 . . . . .	10
2.4.3	Slot 5 . . . . .	11
2.4.4	Slot 6 . . . . .	12
2.4.5	Slot 7 . . . . .	13
2.5	FID Slots . . . . .	14
2.5.1	Slot 0 . . . . .	14
2.5.2	Slot 1 . . . . .	15
2.5.3	Slot 2 . . . . .	16
<b>A</b>	<b>Summary</b>	<b>17</b>
A.1	Status . . . . .	17
A.2	Comments . . . . .	17

# 1 Front

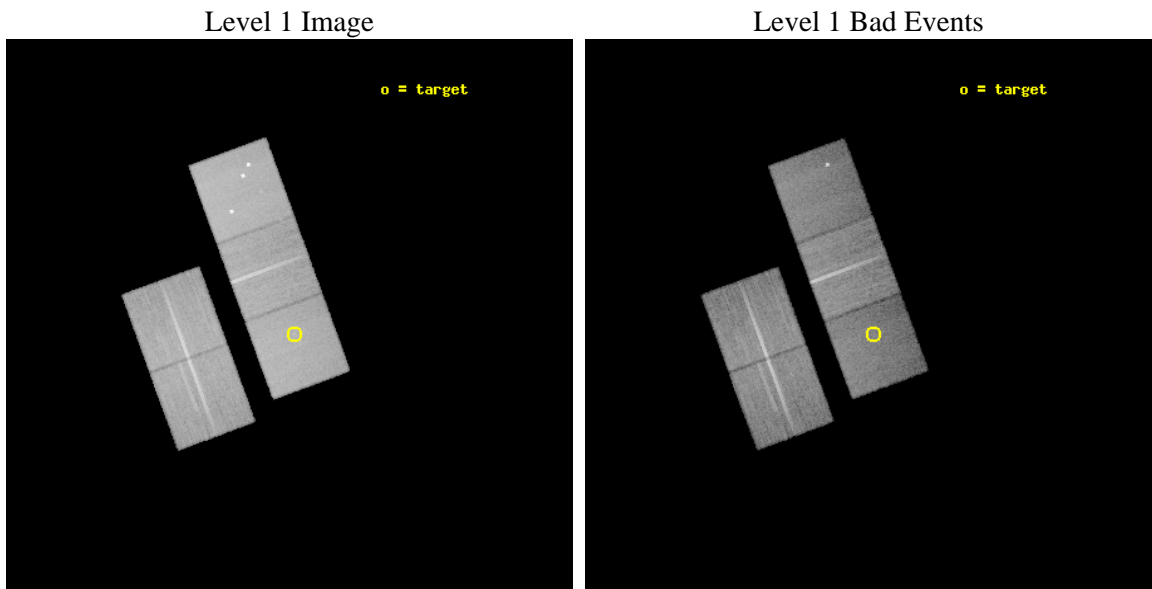
seq_num	600581	Sequence number
obs_id	7143	Observation id
title	The evolving ULX populations of early-type galaxies	Proposal title
observer	Dr Philip Humphrey	Principal investigator
object	NGC 4915	Source name
dtycycle	0	&#160
cycle	P	events from which exps? Prim/Second/Both
ra_targ	195.3675	Observer's specified target RA [deg]
dec_targ	-4.546389	Observer's specified target Dec [deg]
ra_nom	195.37625827679	Nominal RA [deg]
dec_nom	-4.5275402575286	Nominal Dec [deg]
roll_nom	69.879937650804	Nominal Roll [deg]
revision	2	Processing version of data
ontime	26148.499949694	Sum of GTIs [s]
livetime	25806.850547605	Livetime [s]
ontime2	26148.499949694	Sum of GTIs [s]
ontime3	26145.358949542	Sum of GTIs [s]
ontime5	26148.499949694	Sum of GTIs [s]
ontime6	26148.499949694	Sum of GTIs [s]
ontime7	26148.499949694	Sum of GTIs [s]
l2events	257007	Number of level 2 events



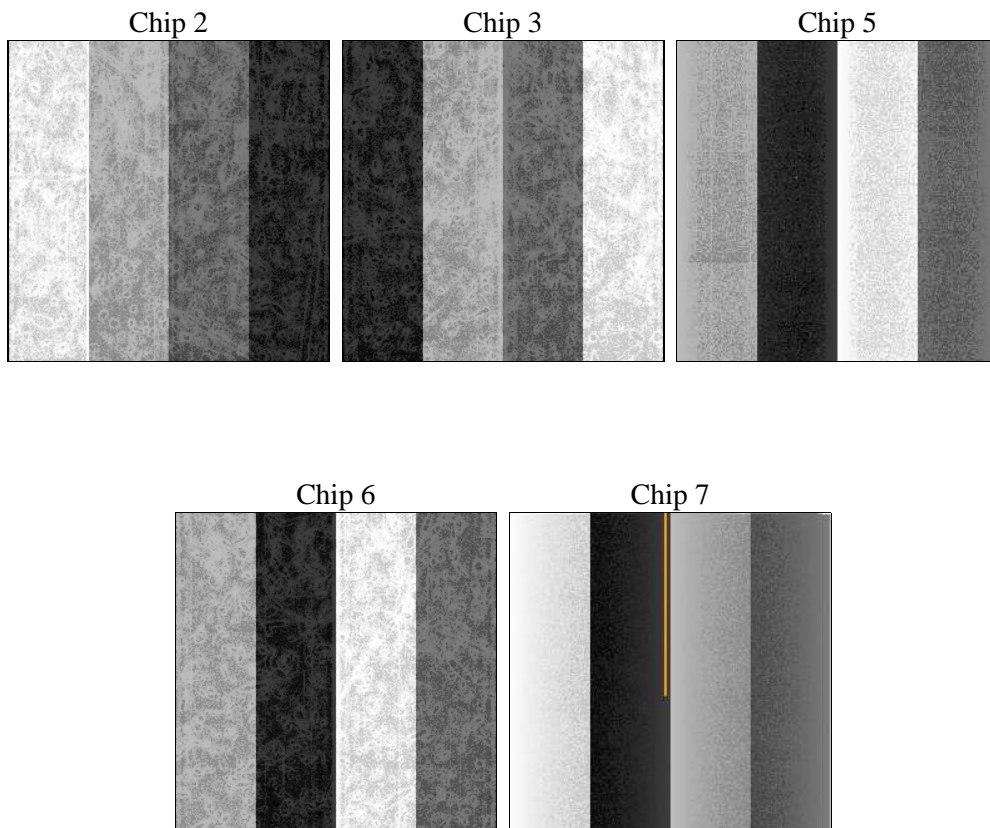
## 2 OBI

### 2.1 OBI

#### 2.1.1 Images



#### 2.1.2 Bias



### 2.1.3 Parameters

obi_num	0	Obi number	sched_exp_time	26000.000000	[s] Scheduled observation exposure time
ascdsver	8.4.3	Processing system revision	ontime	26148.499949694	Sum of GTIs [s]
caldbver	4.4.8	&#160	ontime2	26148.499949694	Sum of GTIs [s]
date	2012-03-26T07:17:58	Date and time of file creation	ontime3	26145.358949542	Sum of GTIs [s]
revision	2	Processing version of data	ontime5	26148.499949694	Sum of GTIs [s]
			ontime6	26148.499949694	Sum of GTIs [s]
			ontime7	26148.499949694	Sum of GTIs [s]
			l1events	1059692	Number of level 1 events

### 2.1.4 Events

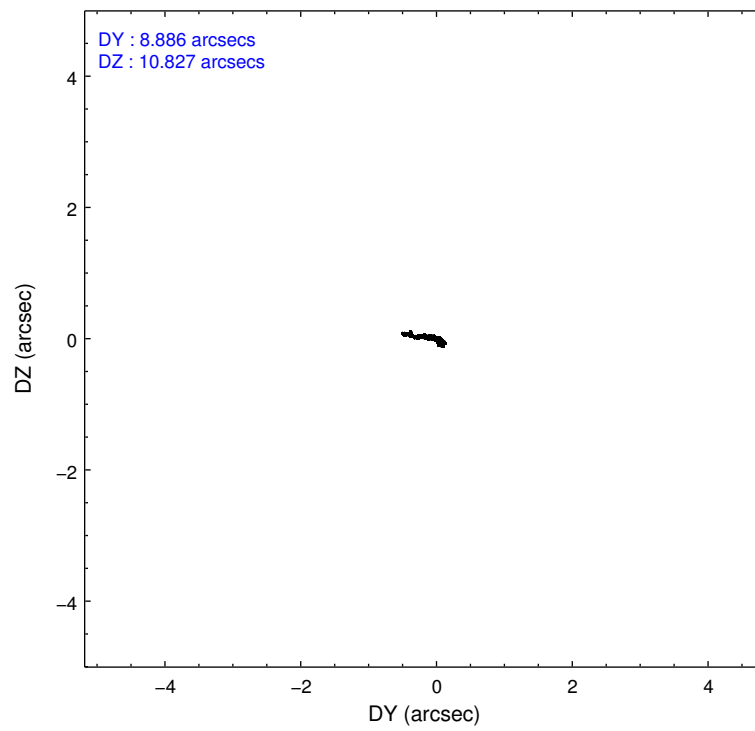
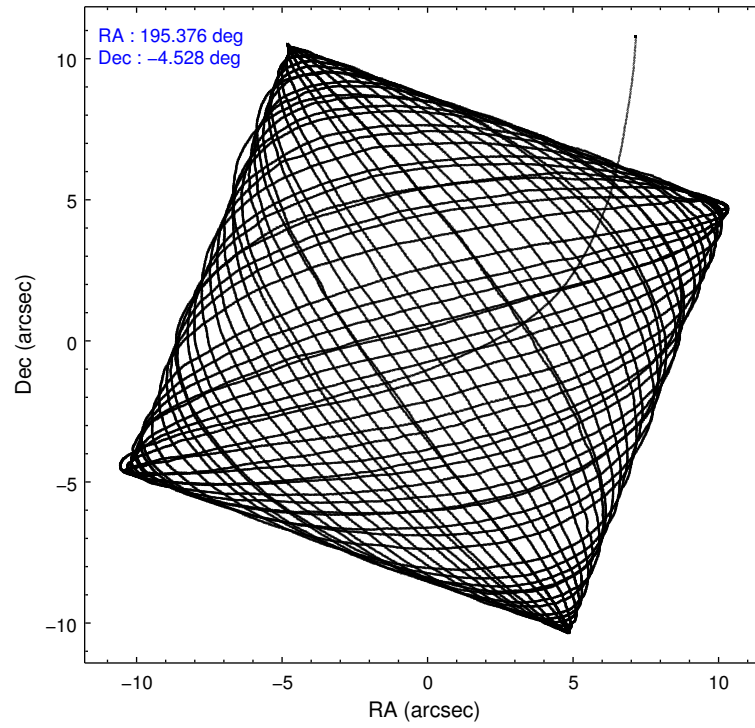
	ccd 2	ccd 3	ccd 5	ccd 6	ccd 7
level 1 events	200434	186914	263373	196408	212563
rejected events	182771	169673	132547	176935	117315
rejected %	91%	90%	50%	90%	55%

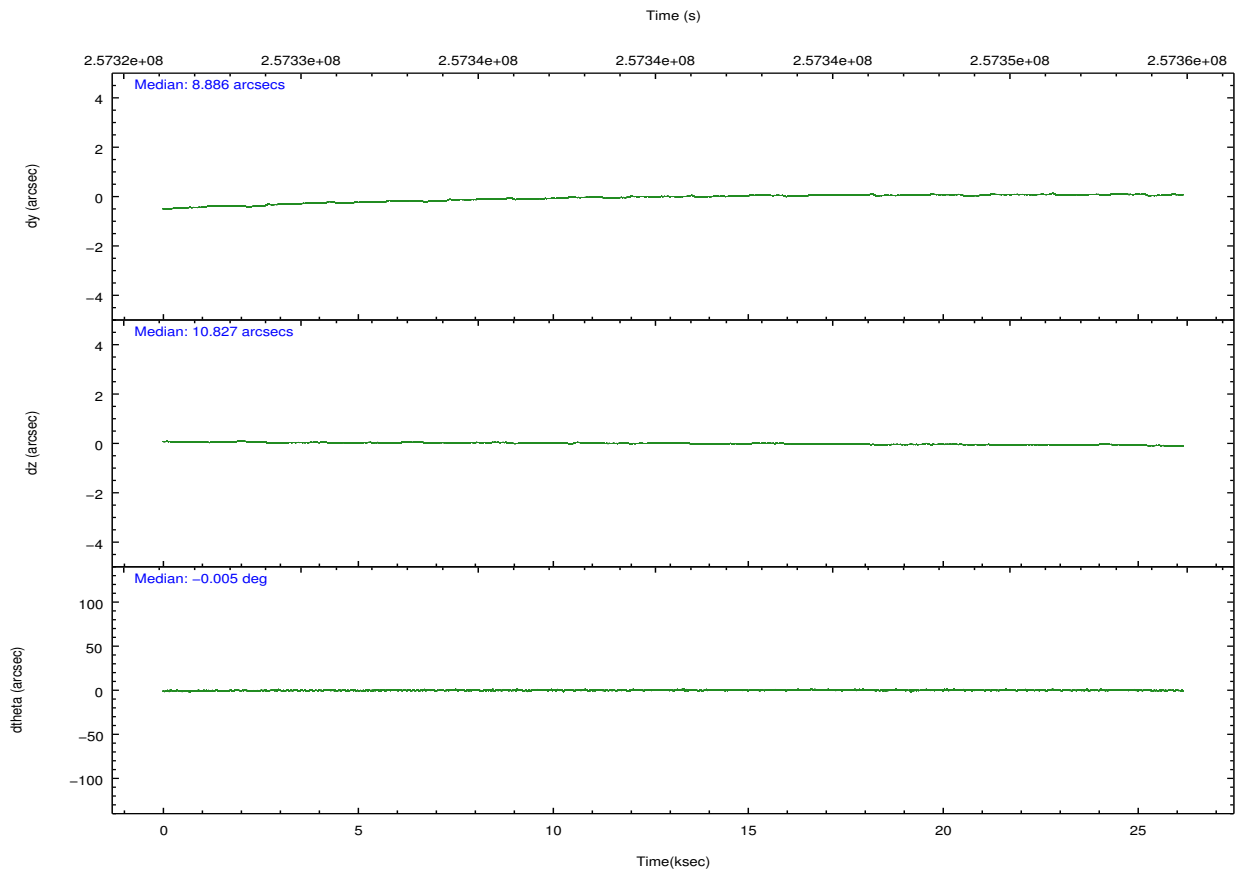
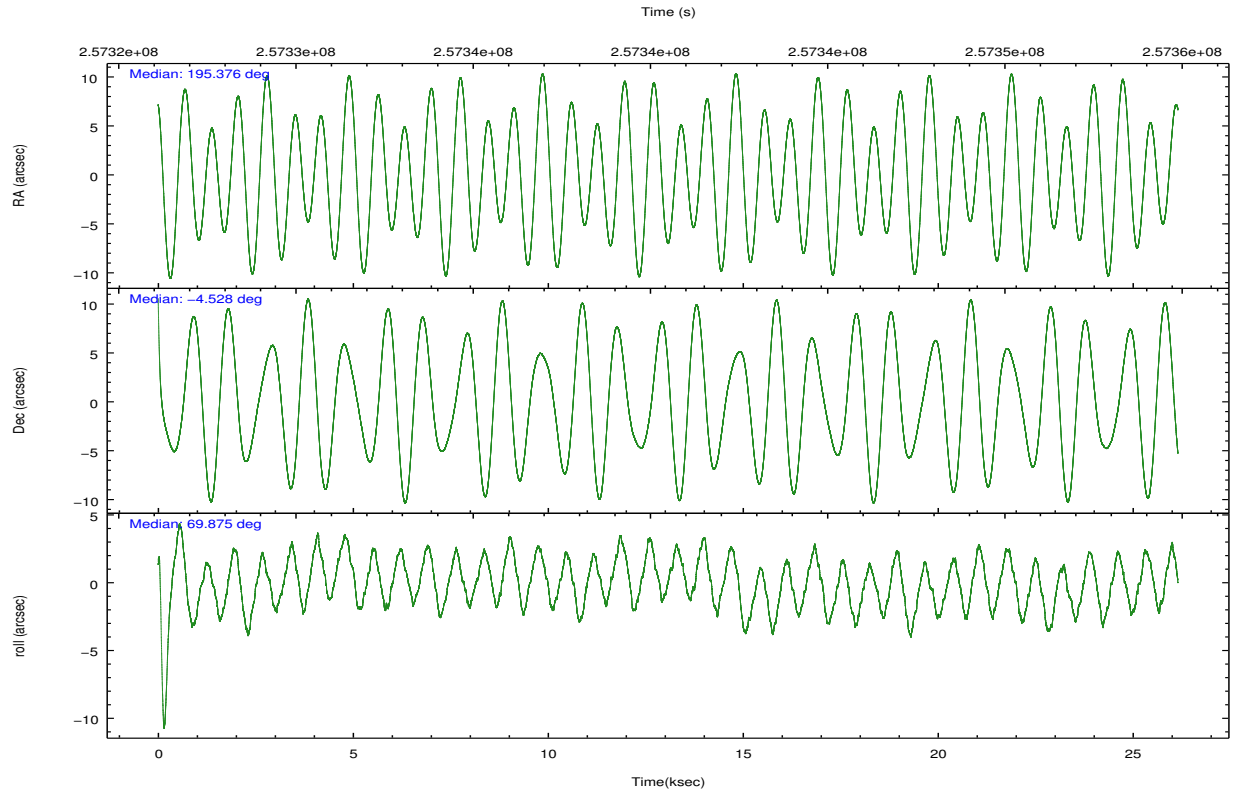
	ccd 2	ccd 3	ccd 5	ccd 6	ccd 7
grade 0 events	6288	6024	17234	6837	8702
	3%	3%	6%	3%	4%
grade 1 events	95	87	1831	86	192
	0%	0%	0%	0%	0%
grade 2 events	4226	3749	37295	4210	19293
	2%	2%	14%	2%	9%
grade 3 events	1931	2062	5607	2166	9067
	0%	1%	2%	1%	4%
grade 4 events	2051	2018	5342	2181	8896
	1%	1%	2%	1%	4%
grade 5 events	6071	7486	21075	7496	22486
	3%	4%	8%	3%	10%
grade 6 events	3327	3497	66375	4240	49995
	1%	1%	25%	2%	23%
grade 7 events	176445	161991	108614	169192	93932
	88%	86%	41%	86%	44%

## 2.2 Compared Parameters

Parameter	Planned	Actual	Parameter	Planned	Actual
Instrument	ACIS	ACIS	Obspar format version number	7	7
Detector	ACIS-23567	ACIS-23567	Obspar file type	PREDICTED	ACTUAL
Grating	NONE	NONE	Obspar update status	NONE	UPDATED
Data mode	VFAINT	VFAINT	Number of optional ACIS chips dropped	0	0
Observation mode	POINTING	POINTING	On-chip summing requested	N	N
[deg] Pointing RA	195.381314	195.3762582767933	Subarray requested	NONE	NONE
[deg] Pointing Dec	-4.554314	-4.527540257528563	Alternating exposures requested	N	N
[deg] Pointing Roll	69.723703	69.87993765080371	[s] Primary exposure time	0.000000	3.1
[mm] SIM focus pos	-0.684267	-0.6828225247311905			
[mm] SIM defocus	0	0.001444936568705701			
[mm] SIM translation stage pos	-190.132523	-190.1400660498719			
[mm] SIM translation stage offset	0	0.00754346686406393			
[s] Observation start time (MET)	257327570.184000	257326486.74168			
Observation start date	2006-02-26T07:51:45	2006-02-26T07:34:46			
[s] Observation end time (MET)	257353570.184000	257354394.41798			
Observation end date	2006-02-26T15:05:05	2006-02-26T15:19:54			
Read mode	TIMED	TIMED			

## 2.3 Aspect



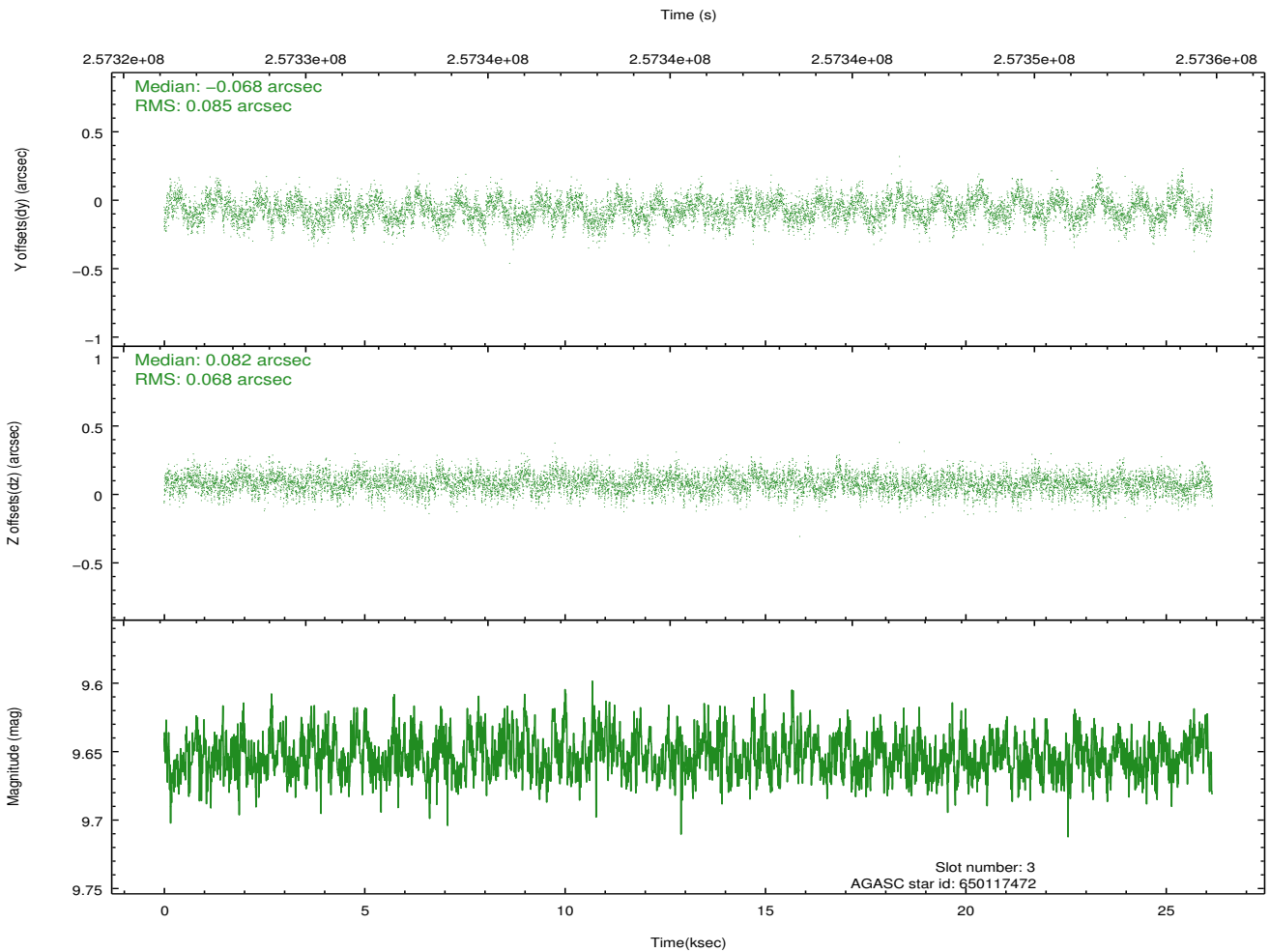
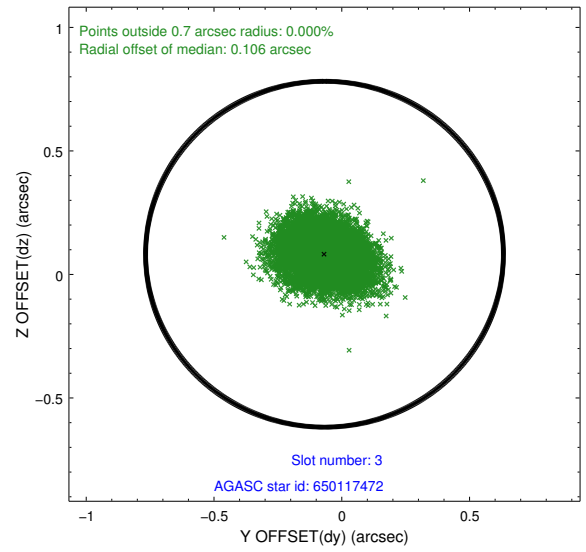
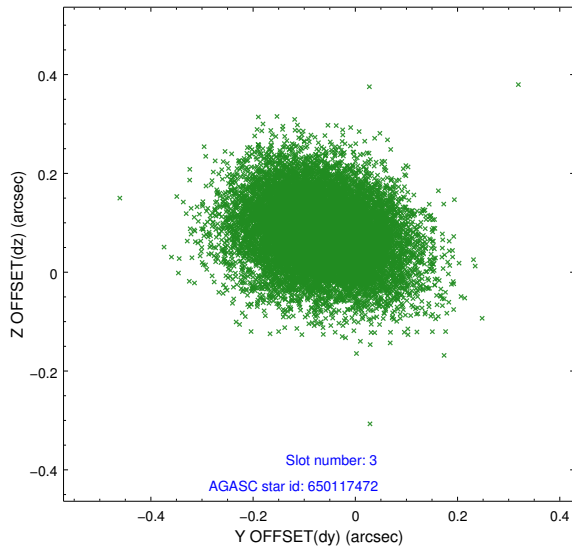


### Slot Statistics

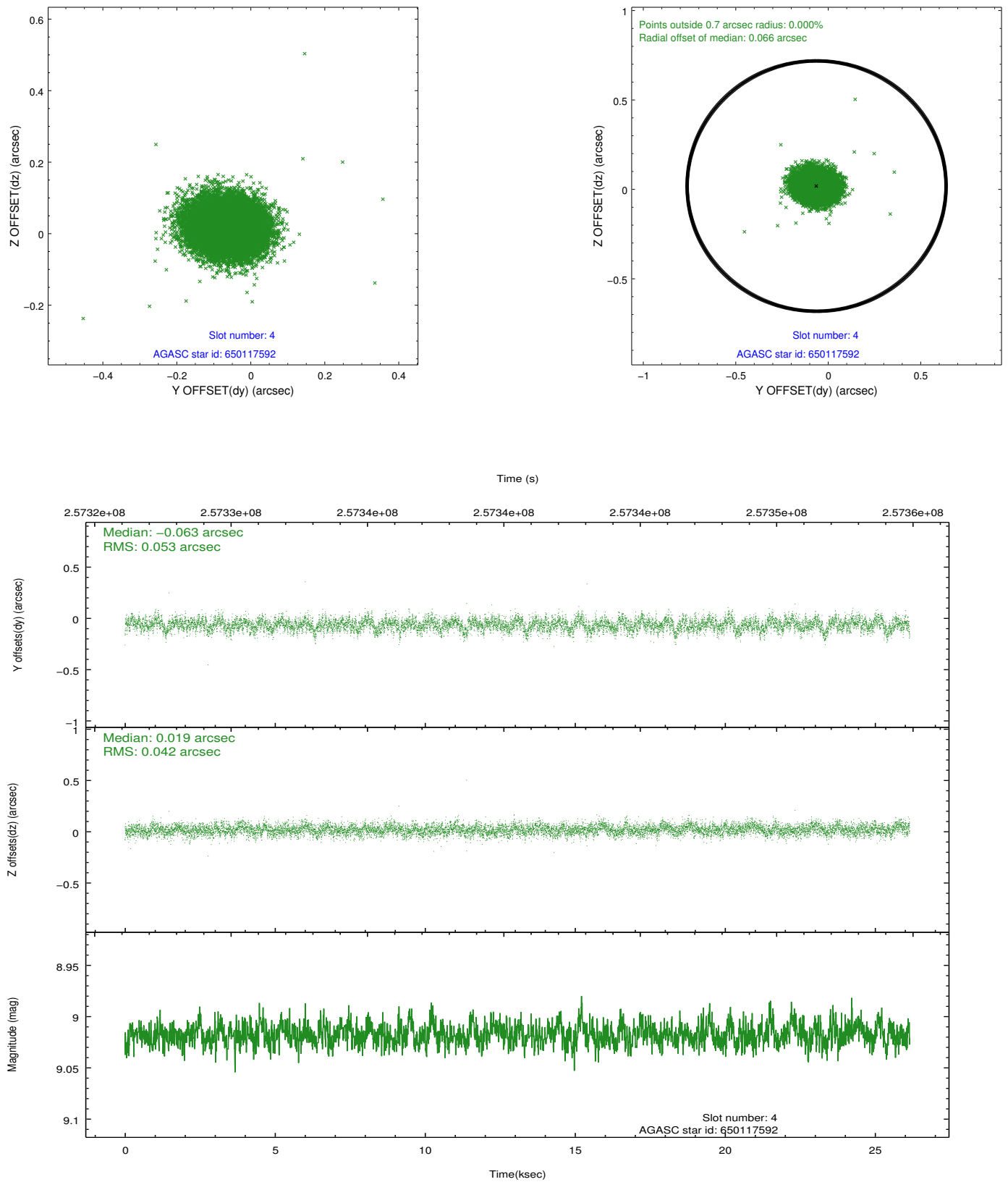
slot	status	id	mag	n_pts	med_dy	med_dz	dr1	dr2	ra	dec	mean_y	mean_z
0	FID	ACIS-S-1	7.19	6379	0.056	-0.072	0.008	0.025	0.000000	0.000000	934.47	-1727.79
1	FID	ACIS-S-5	7.24	6379	-0.131	0.023	0.008	0.014	0.000000	0.000000	-1814.65	169.76
2	FID	ACIS-S-6	7.35	6379	0.053	0.061	0.010	0.018	0.000000	0.000000	399.92	813.87
3	GUIDE	650117472	9.65	12739	-0.068	0.082	0.115	0.187	195.607602	-4.000561	2151.39	-70.30
4	GUIDE	650117592	9.02	12747	-0.063	0.019	0.071	0.115	195.774242	-4.286451	1393.38	-989.08
5	GUIDE	650121488	9.32	12749	-0.080	0.021	0.112	0.184	195.752842	-4.011341	2296.07	-573.89
6	GUIDE	650125192	8.89	12711	-0.001	-0.036	0.077	0.125	195.689246	-4.609034	198.48	-1104.42
7	GUIDE	649205696	7.94	12752	0.209	-0.082	0.065	0.104	194.848693	-4.906768	-1852.62	1351.88

## 2.4 Star Slots

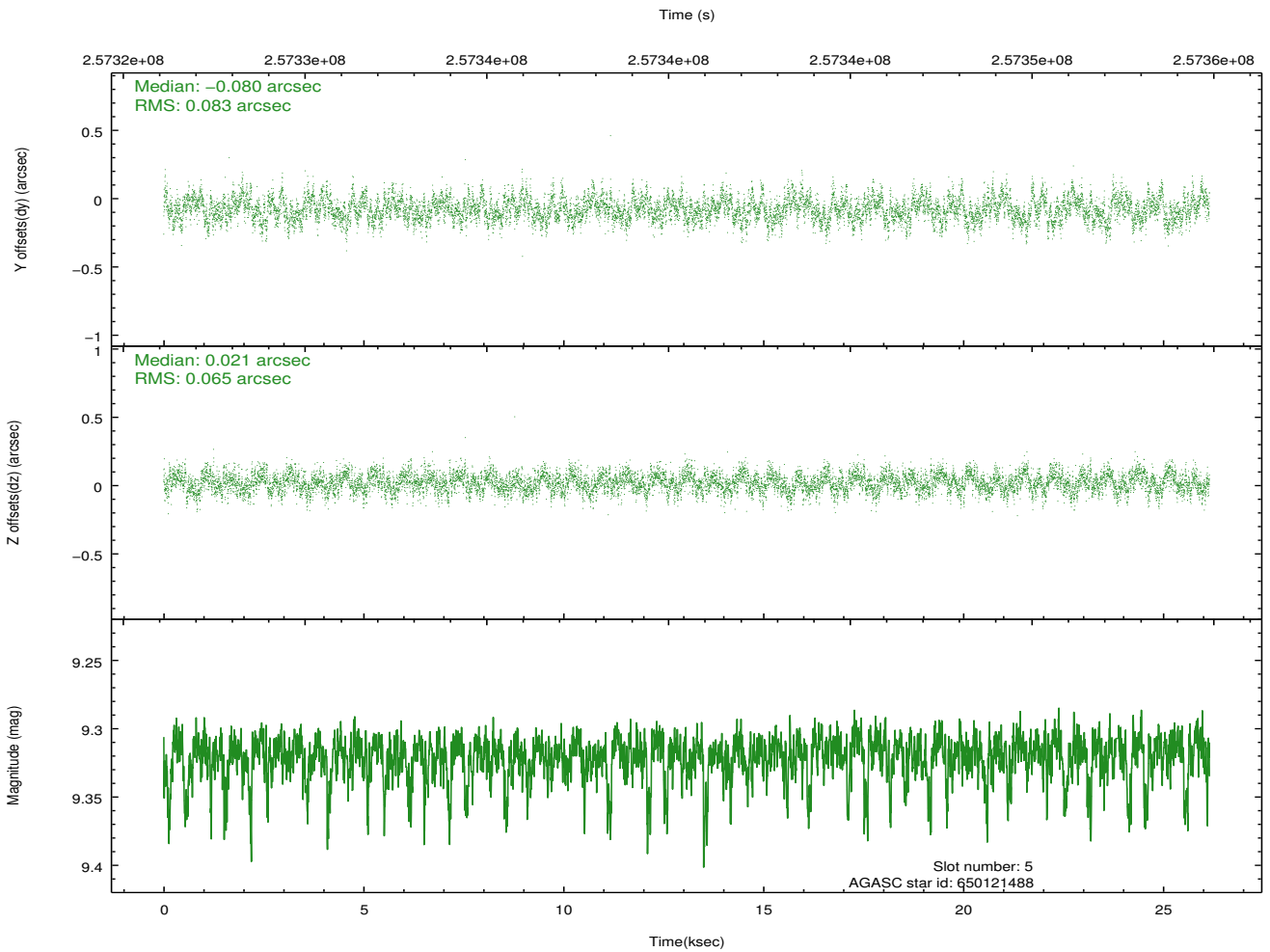
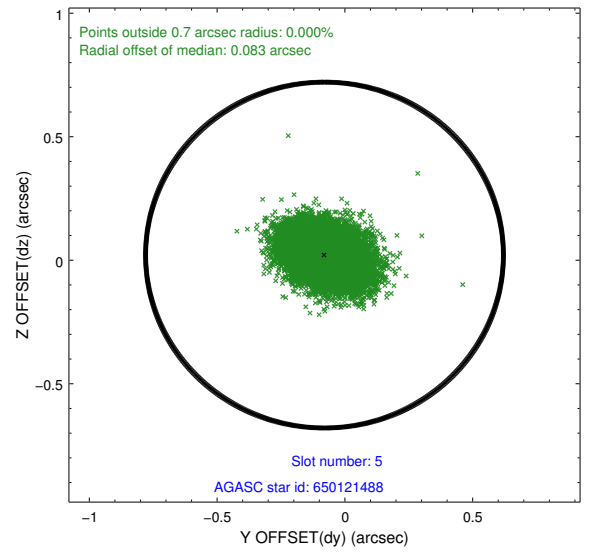
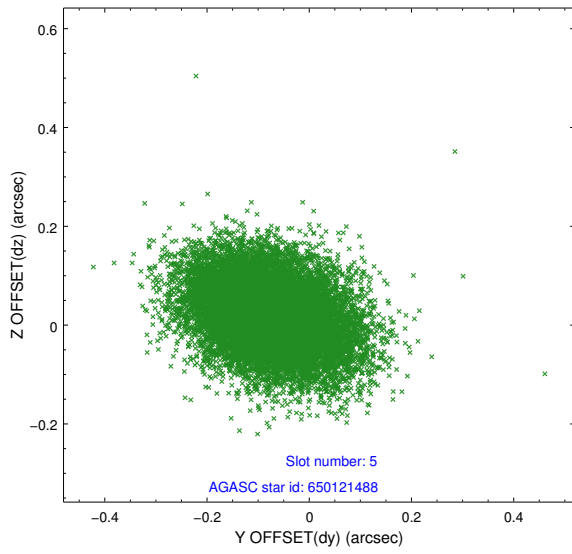
### 2.4.1 Slot 3



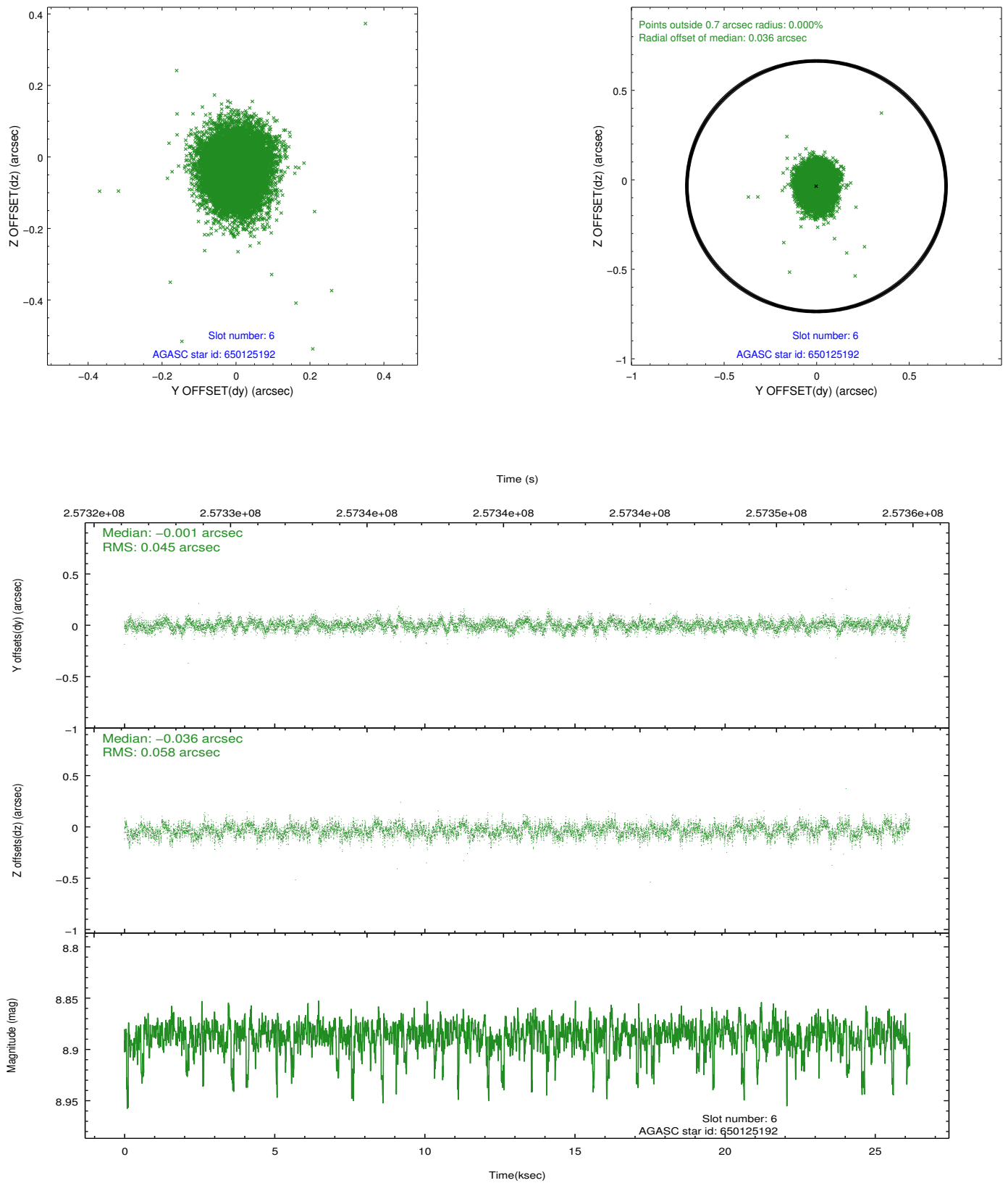
## 2.4.2 Slot 4



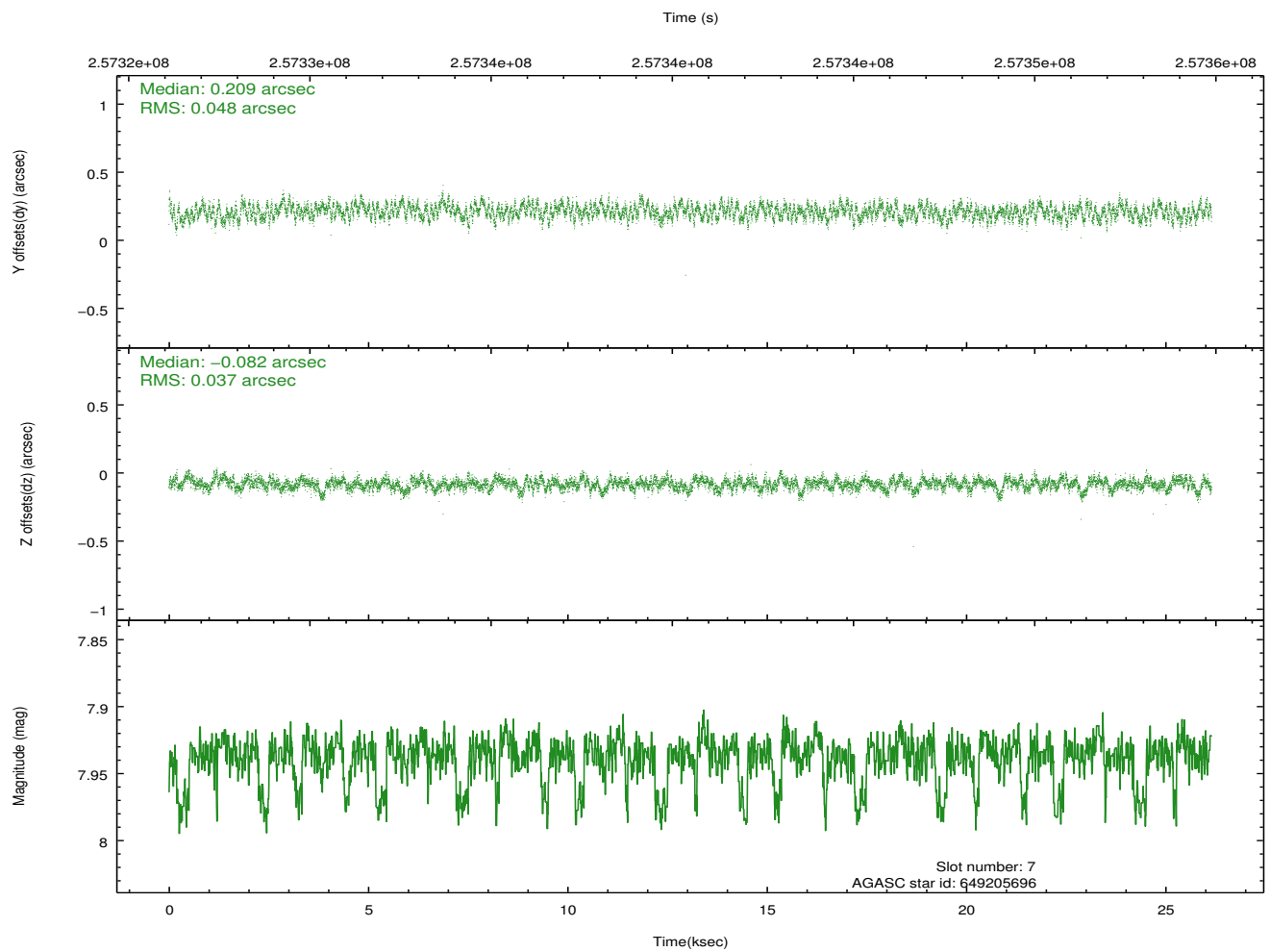
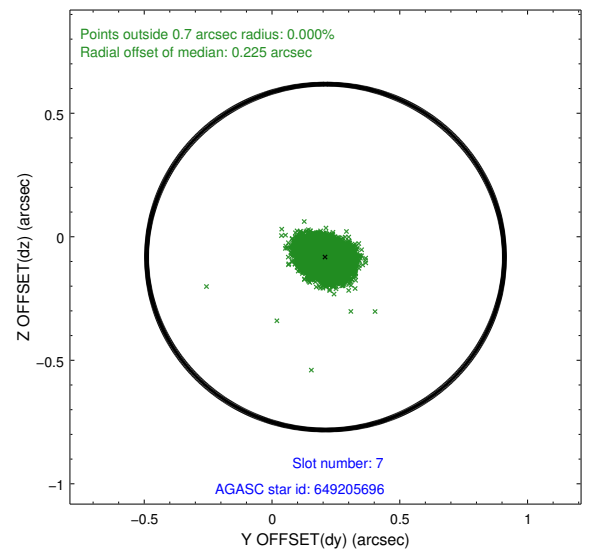
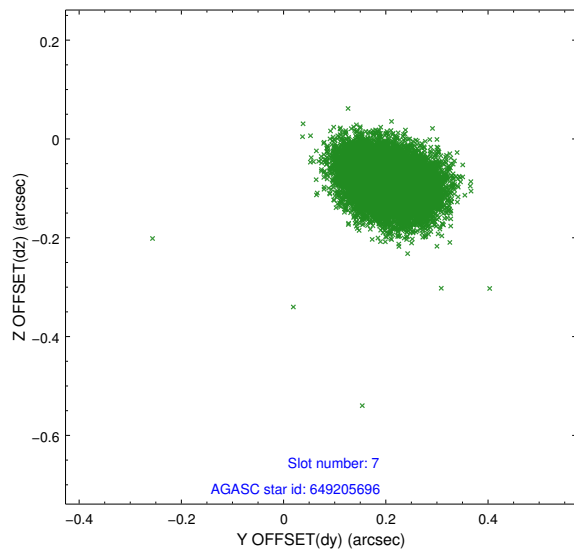
### 2.4.3 Slot 5



## 2.4.4 Slot 6

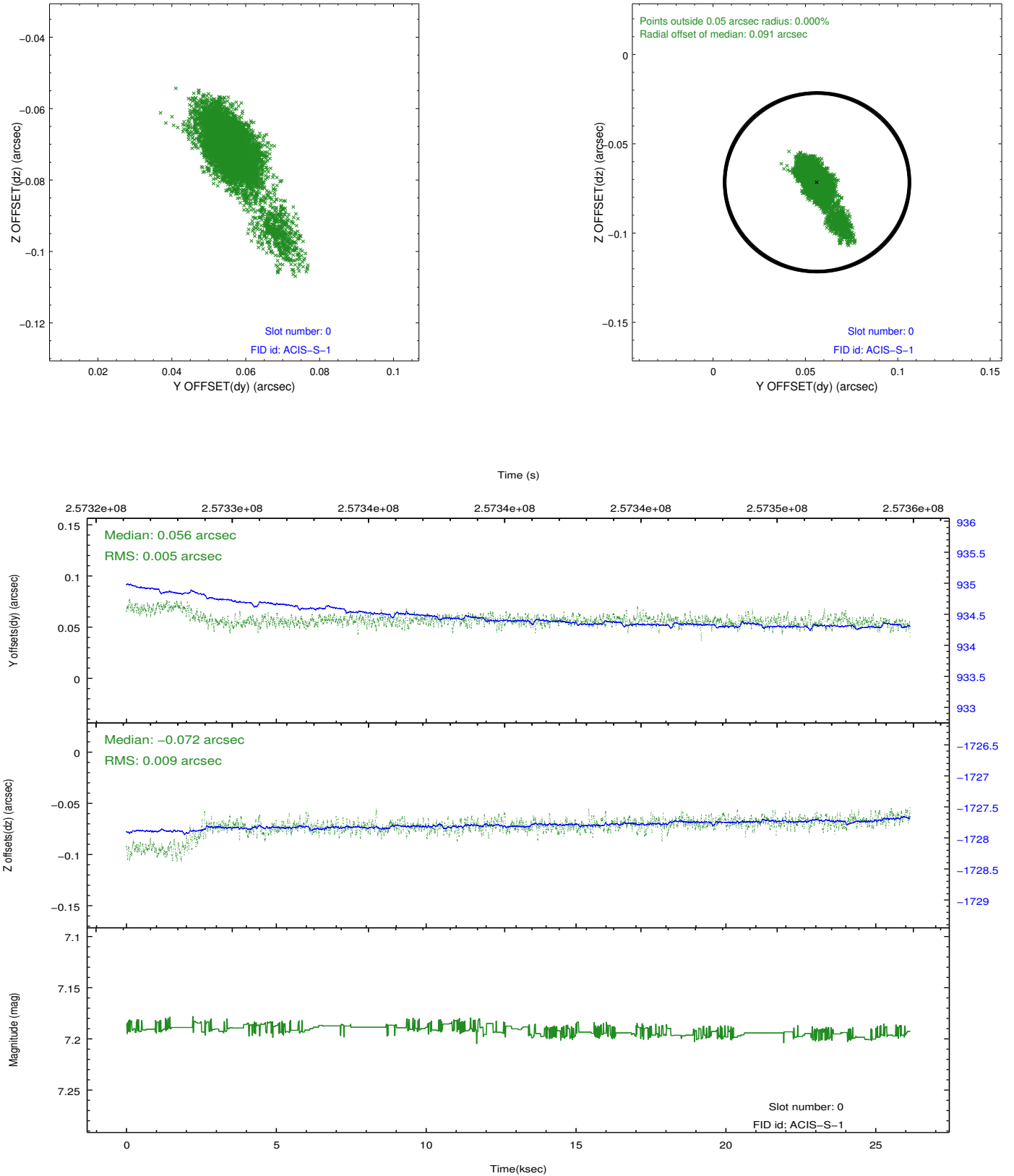


## 2.4.5 Slot 7

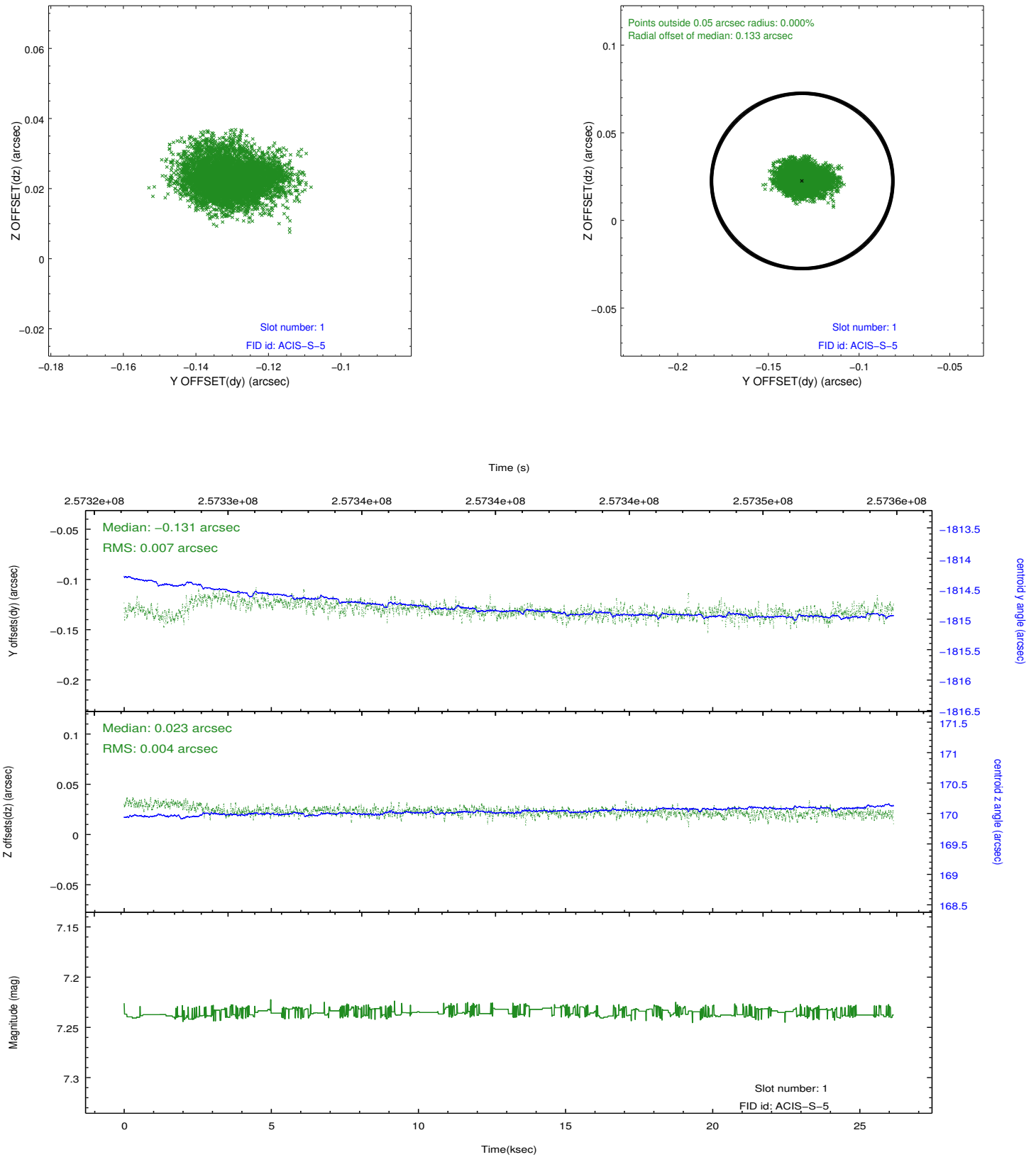


## 2.5 FID Slots

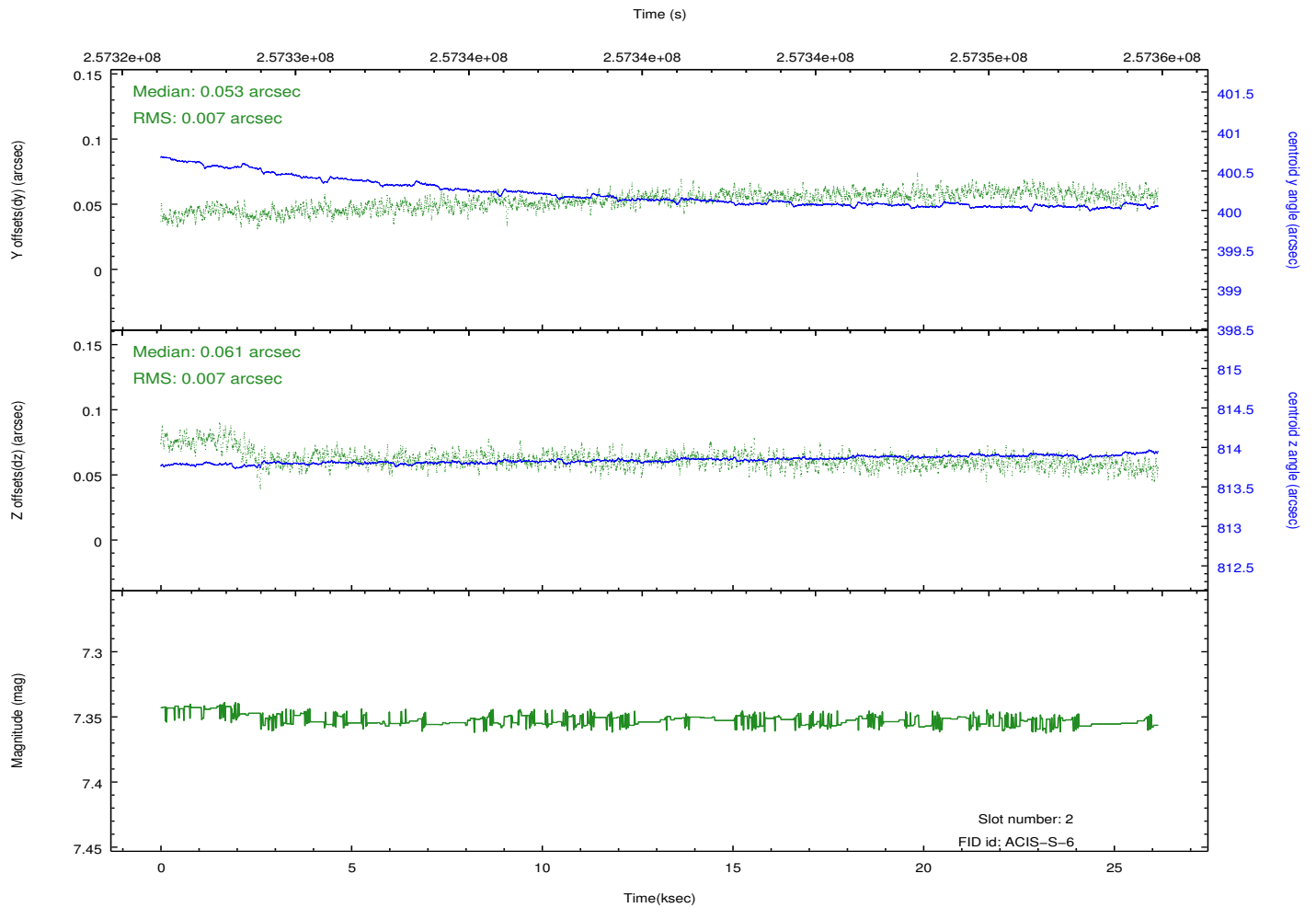
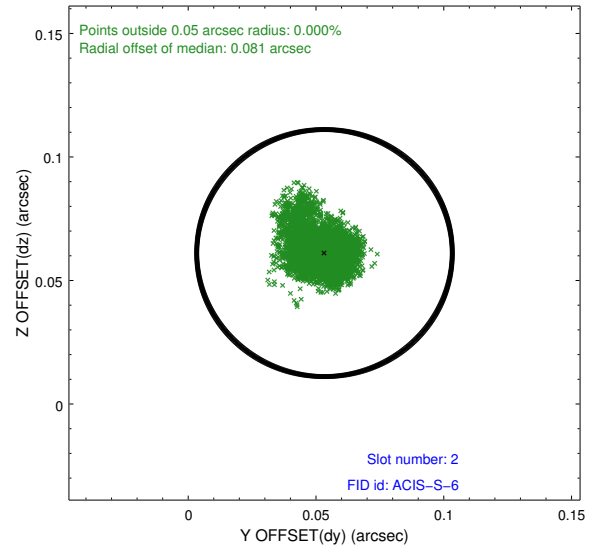
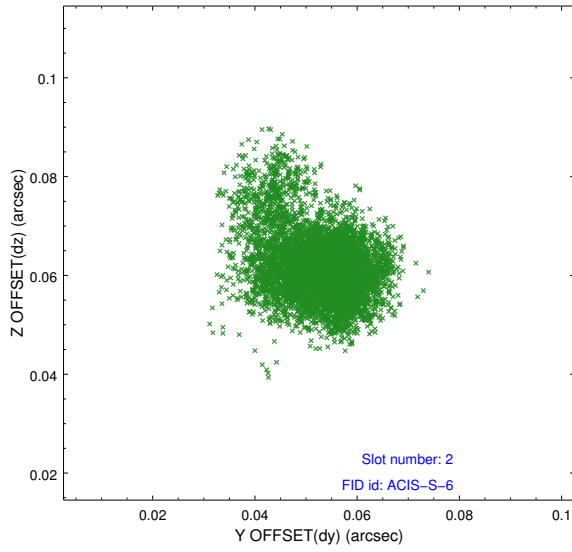
### 2.5.1 Slot 0



## 2.5.2 Slot 1



### 2.5.3 Slot 2



# A Summary

## A.1 Status

V&V Scientist	Beth Sundheim
V&V Date (YYYY-MM-DD)	2012.03.28
V&V Edition	1
V&V Disposition and Status	OK
V&V Charge Time	26.1484999

## A.2 Comments