

V&V Reference Report

L2 ASCDS Version : 8.4.3.1

Observation 7163 - L2 Version 2
Chandra X-Ray Center

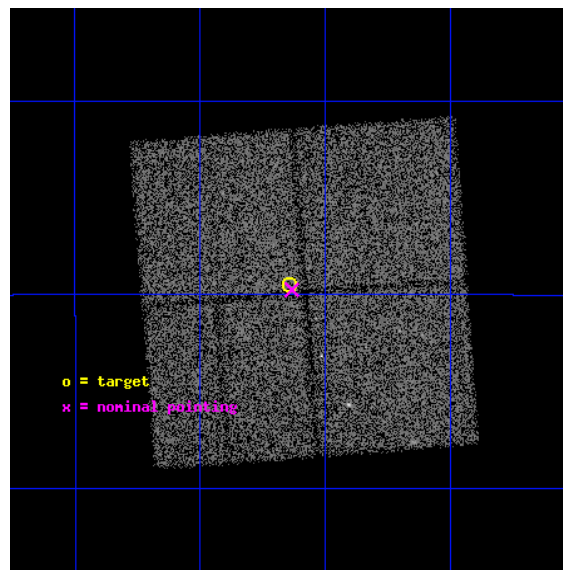
L2 Processing Date : Apr 12 2012

Contents

1	Front	2
2	OBI	3
2.1	OBI	3
2.1.1	Images	3
2.1.2	Bias	3
2.1.3	Parameters	4
2.1.4	Events	4
2.2	Compared Parameters	5
2.3	Aspect	6
2.4	Star Slots	9
2.4.1	Slot 3	9
2.4.2	Slot 4	10
2.4.3	Slot 5	11
2.4.4	Slot 6	12
2.4.5	Slot 7	13
2.5	FID Slots	14
2.5.1	Slot 0	14
2.5.2	Slot 1	15
2.5.3	Slot 2	16
A	Summary	17
A.1	Status	17
A.2	Comments	17

1 Front

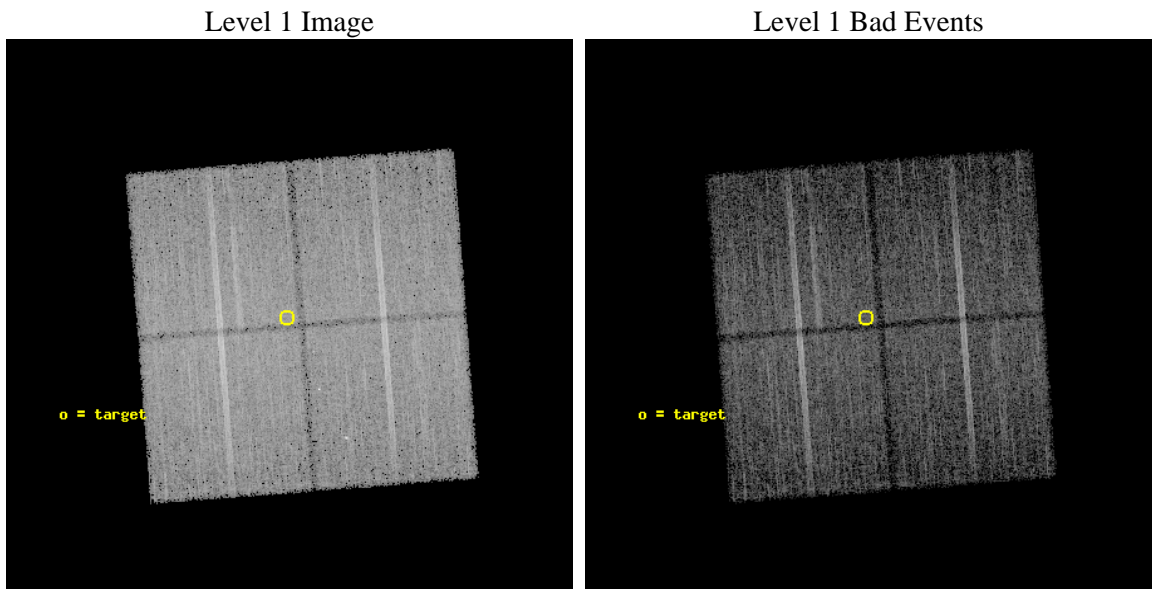
seq_num	600601	Sequence number
obs_id	7163	Observation id
title	Galactic Bulge Latitude Survey	Proposal title
observer	Professor Johnathan Grindlay	Principal investigator
object	GBW7	Source name
dtcycle	0	
cycle	P	events from which exps? Prim/Second/Both
ra_targ	266.785833	Observer's specified target RA [deg]
dec_targ	-29.158556	Observer's specified target Dec [deg]
ra_nom	266.7833972989	Nominal RA [deg]
dec_nom	-29.162645246945	Nominal Dec [deg]
roll_nom	265.60050023471	Nominal Roll [deg]
revision	2	Processing version of data
ontime	14554.500111938	Sum of GTIs [s]
livetime	14364.334853108	Livetime [s]
ontime0	14545.077161252	Sum of GTIs [s]
ontime1	14554.500111938	Sum of GTIs [s]
ontime2	14554.500111938	Sum of GTIs [s]
ontime3	14554.500111938	Sum of GTIs [s]
l2events	66673	Number of level 2 events



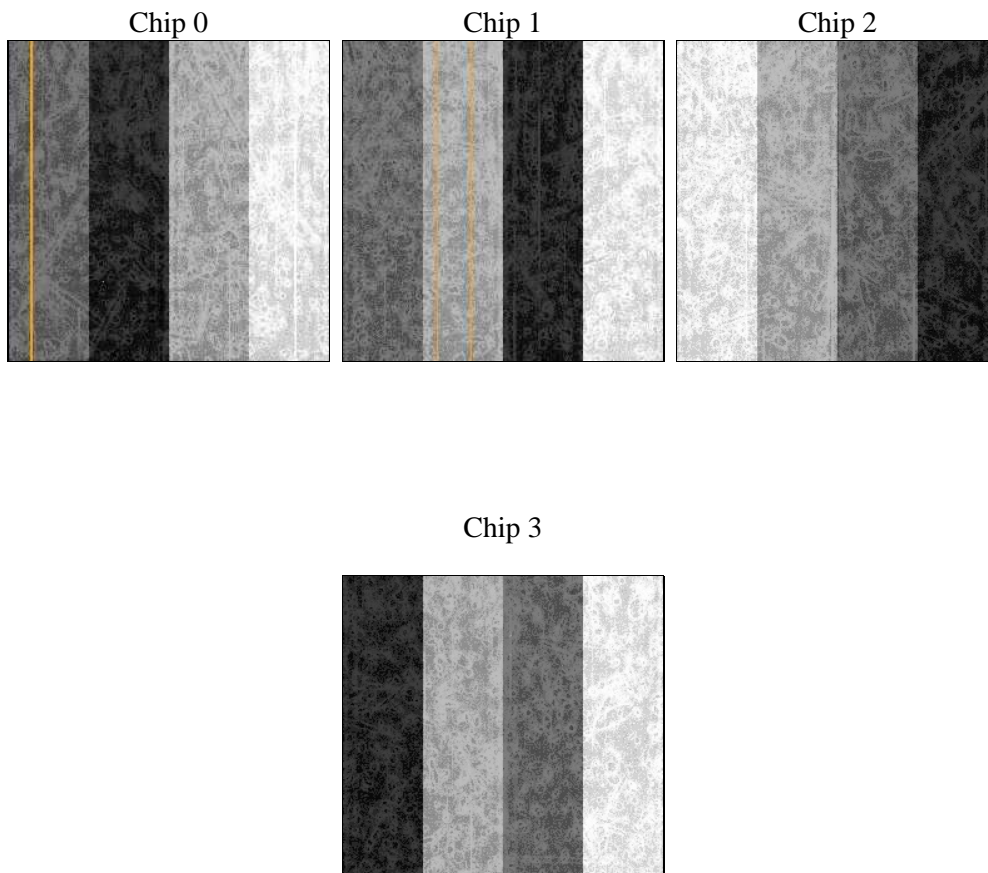
2 OBI

2.1 OBI

2.1.1 Images



2.1.2 Bias



2.1.3 Parameters

obi_num	0	Obi number	sched_exp_time	14500.000000	[s] Scheduled observation exposure time
ascdsver	8.4.3.1	Processing system revision	ontime	14554.500111938	Sum of GTIs [s]
caldbver	4.4.9	 	ontime0	14545.077161252	Sum of GTIs [s]
date	2012-04-12T23:12:52	Date and time of file creation	ontime1	14554.500111938	Sum of GTIs [s]
revision	2	Processing version of data	ontime2	14554.500111938	Sum of GTIs [s]
			ontime3	14554.500111938	Sum of GTIs [s]
			l1events	526325	Number of level 1 events

2.1.4 Events

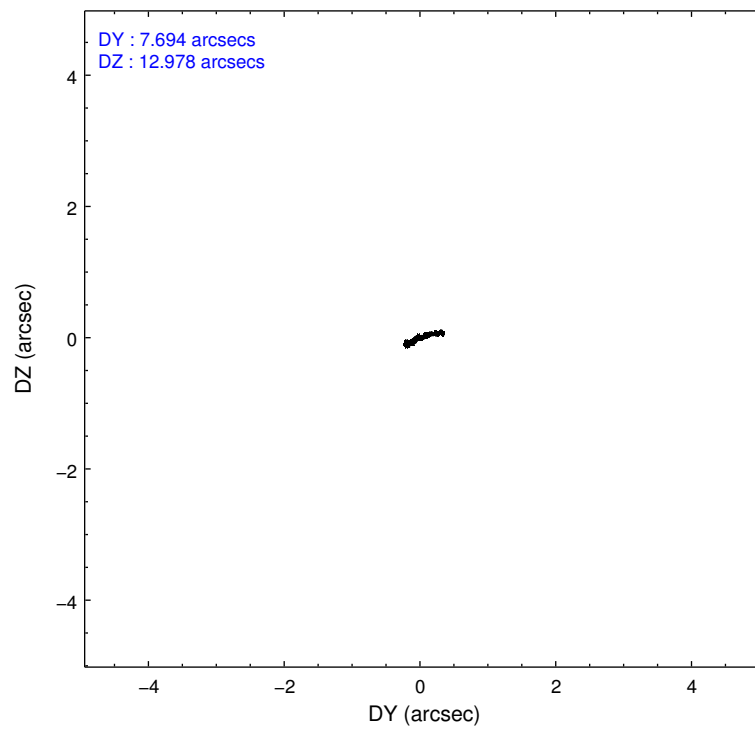
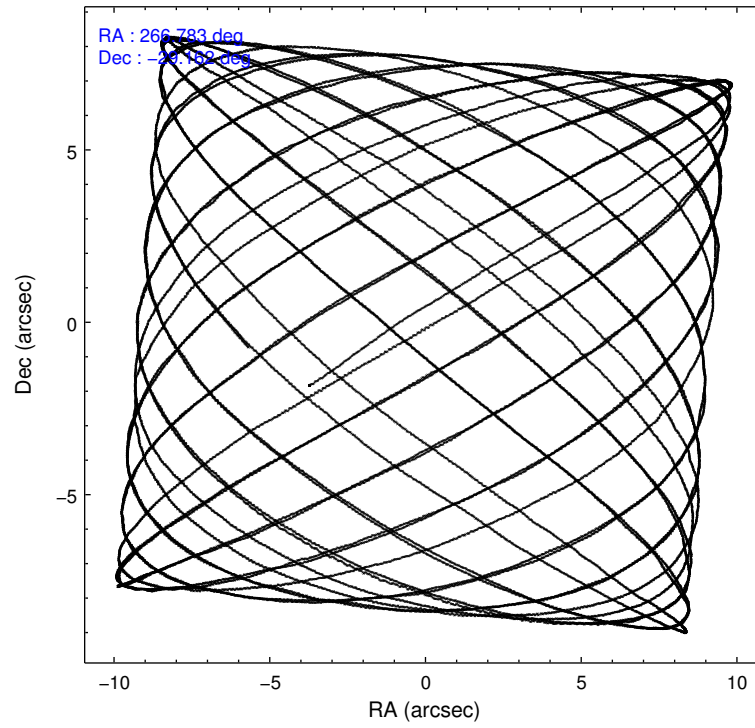
	ccd 0	ccd 1	ccd 2	ccd 3
level 1 events	127685	124151	138449	136040
rejected events	107267	104230	120439	117905
rejected %	84%	83%	86%	86%

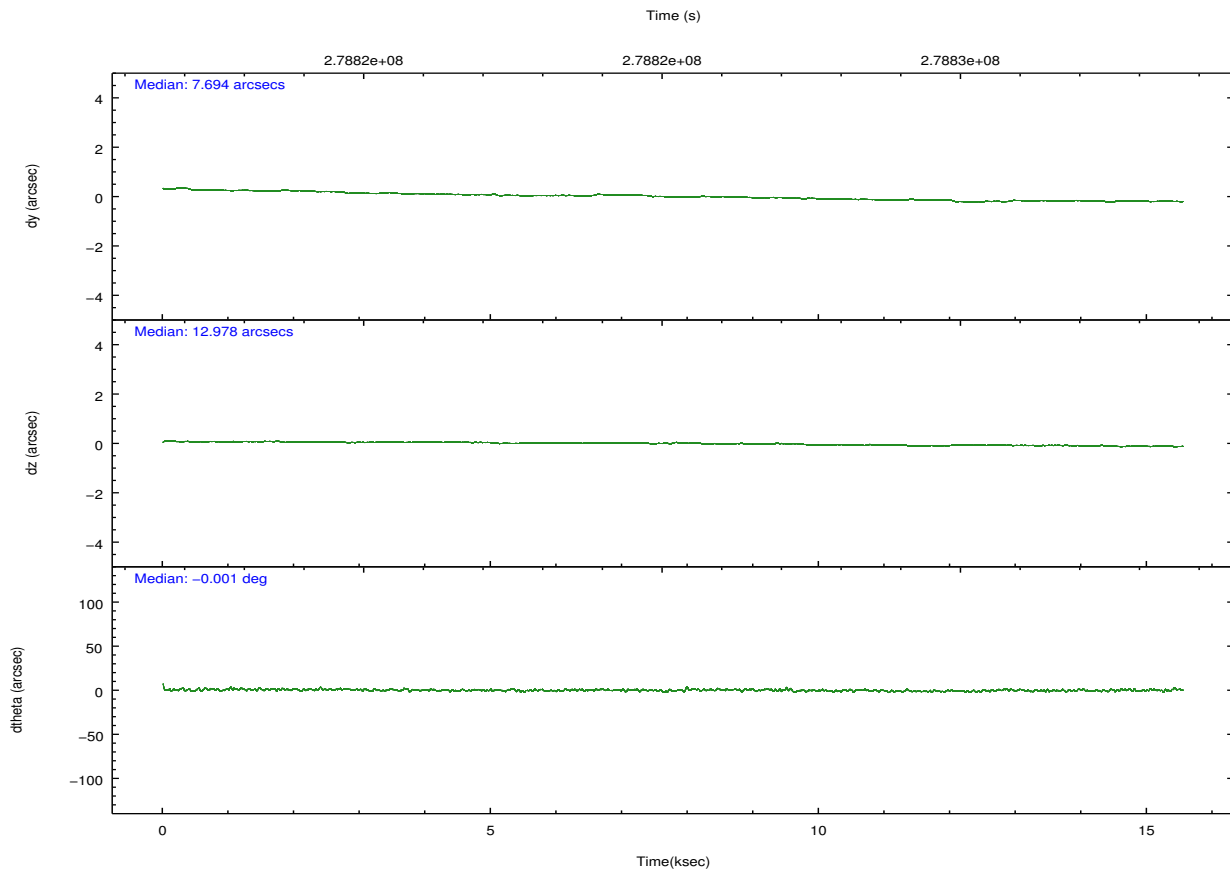
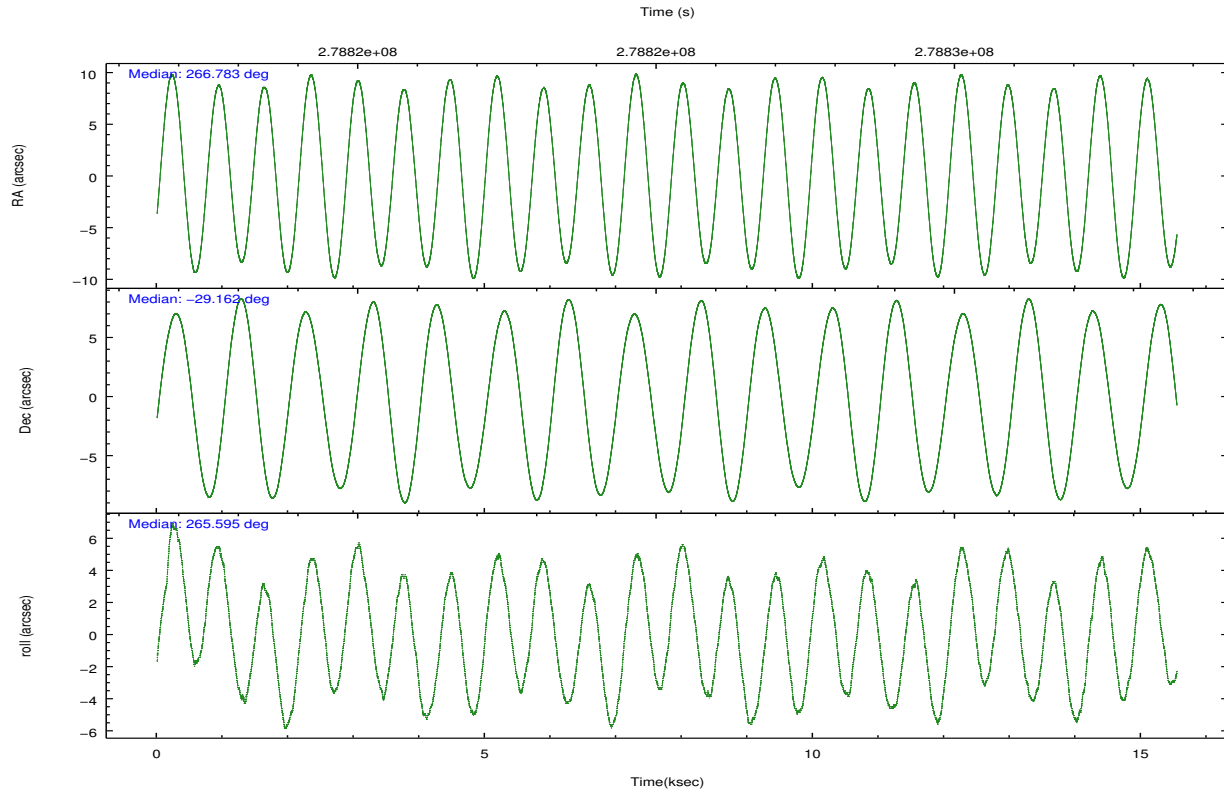
	ccd 0	ccd 1	ccd 2	ccd 3
grade 0 events	10017	8744	8640	8613
	7%	7%	6%	6%
grade 1 events	107	84	111	81
	0%	0%	0%	0%
grade 2 events	4074	4230	3571	3297
	3%	3%	2%	2%
grade 3 events	1692	1773	1570	1617
	1%	1%	1%	1%
grade 4 events	1652	1765	1546	1631
	1%	1%	1%	1%
grade 5 events	5220	5729	5072	6116
	4%	4%	3%	4%
grade 6 events	2994	3416	2690	2983
	2%	2%	1%	2%
grade 7 events	101929	98410	115249	111702
	79%	79%	83%	82%

2.2 Compared Parameters

Parameter	Planned	Actual	Parameter	Planned	Actual
Instrument	ACIS	ACIS	Obspar format version number	7	7
Detector	ACIS-0123	ACIS-0123	Obspar file type	PREDICTED	ACTUAL
Grating	NONE	NONE	Obspar update status	NONE	UPDATED
Data mode	VFAINT	VFAINT	Number of optional ACIS chips dropped	0	0
Observation mode	POINTING	POINTING	On-chip summing requested	N	N
[deg] Pointing RA	266.769728	266.7833972988993	Subarray requested	NONE	NONE
[deg] Pointing Dec	-29.138026	-29.1626452469452	Alternating exposures requested	N	N
[deg] Pointing Roll	265.385151	265.6005002347051	[s] Primary exposure time	0.000000	3.1
[mm] SIM focus pos	-0.782348	-0.7809083437167272			
[mm] SIM defocus	0	0.001439871863259334			
[mm] SIM translation stage pos	-233.592463	-233.5874344608287			
[mm] SIM translation stage offset	0	-0.005018542100998502			
[s] Observation start time (MET)	278818466.184000	278817164.59773			
Observation start date	2006-11-02T01:33:21	2006-11-02T01:12:44			
[s] Observation end time (MET)	278832966.184000	278833100.27348			
Observation end date	2006-11-02T05:35:01	2006-11-02T05:38:20			
Read mode	TIMED	TIMED			

2.3 Aspect



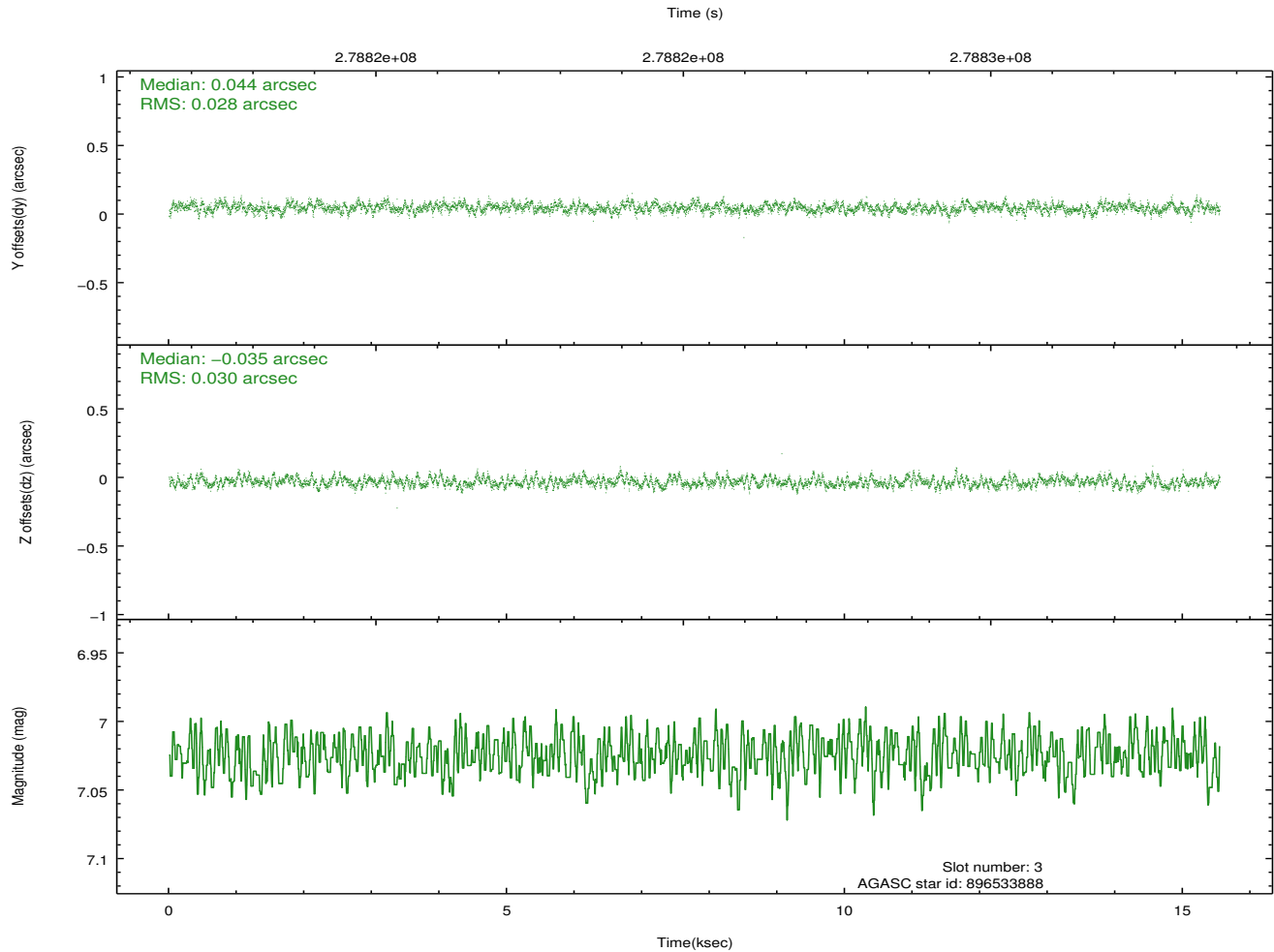
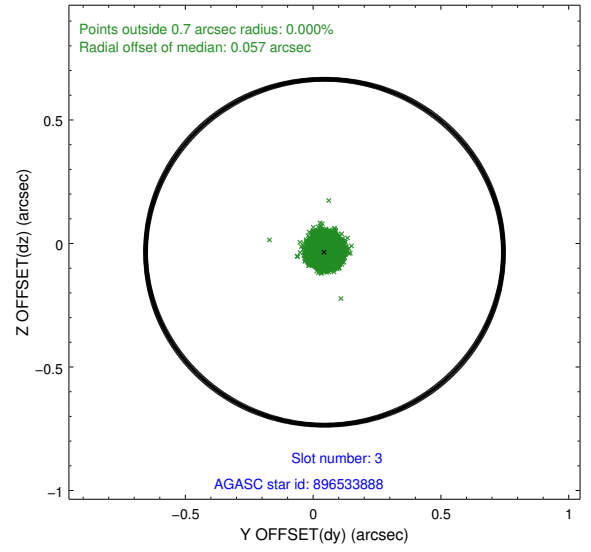
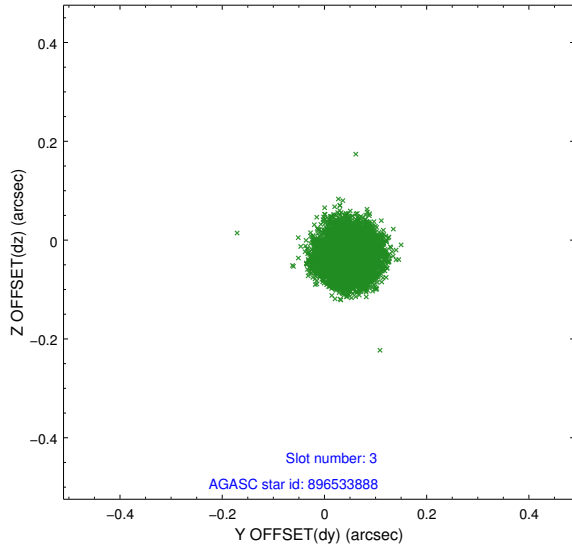


Slot Statistics

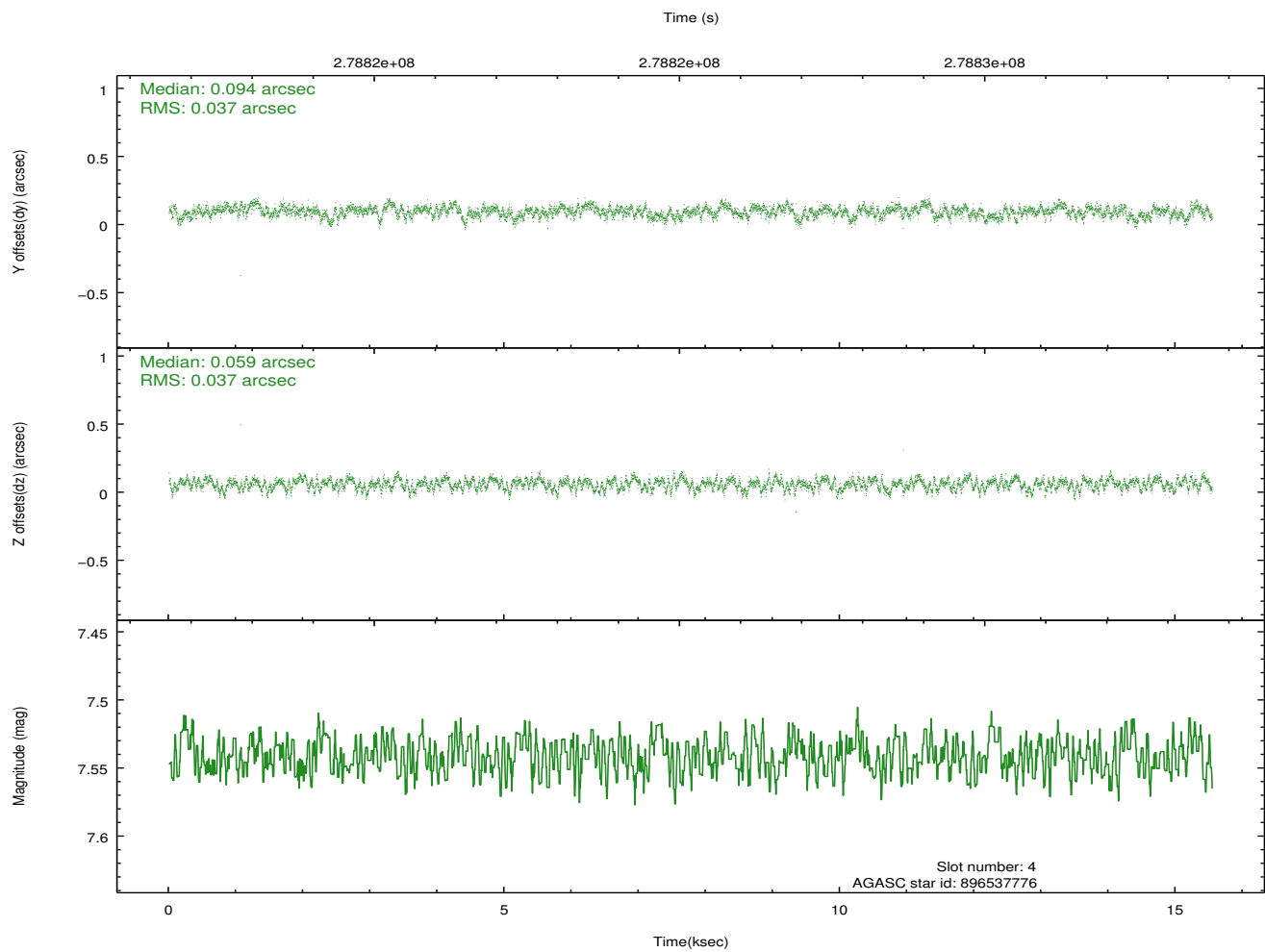
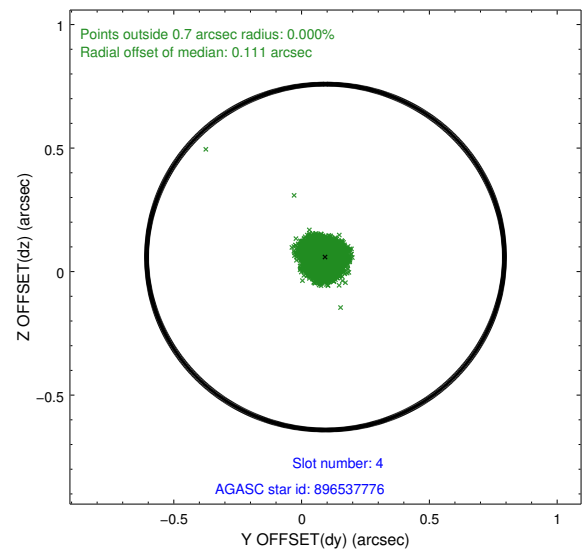
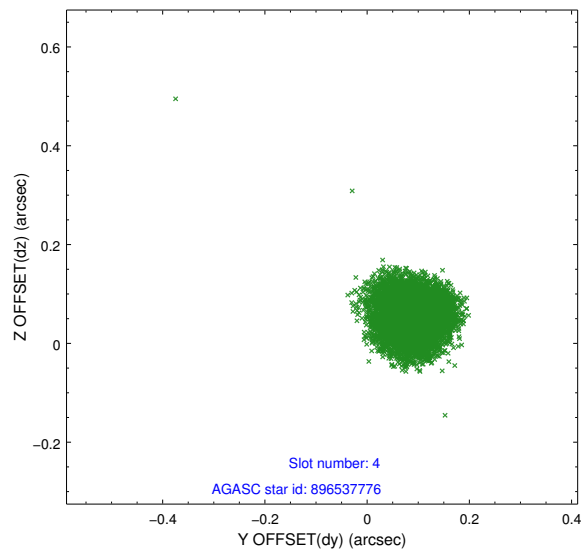
slot	status	id	mag	n_pts	med_dy	med_dz	dr1	dr2	ra	dec	mean_y	mean_z
0	FID	ACIS-I-1	7.24	3792	-0.058	0.045	0.009	0.015	0.000000	0.000000	931.89	-836.48
1	FID	ACIS-I-2	7.15	3789	-0.157	-0.088	0.010	0.018	0.000000	0.000000	-762.14	-843.17
2	FID	ACIS-I-4	7.19	3792	0.117	0.109	0.008	0.015	0.000000	0.000000	2151.85	1063.23
3	GUIDE	896533888	7.03	7583	0.044	-0.035	0.045	0.070	266.666434	-29.392757	940.88	-248.96
4	GUIDE	896537776	7.54	7584	0.094	0.059	0.056	0.087	266.655684	-29.665673	1923.03	-202.42
5	GUIDE	896538208	7.95	7517	-0.073	0.024	0.047	0.076	267.176969	-28.671626	-1774.30	1147.29
6	GUIDE	896540808	7.48	7584	-0.107	-0.021	0.049	0.080	265.985401	-29.308604	818.85	-2403.75
7	GUIDE	896532680	8.75	7581	0.042	-0.027	0.071	0.112	266.342632	-28.496299	-2190.78	-1533.06

2.4 Star Slots

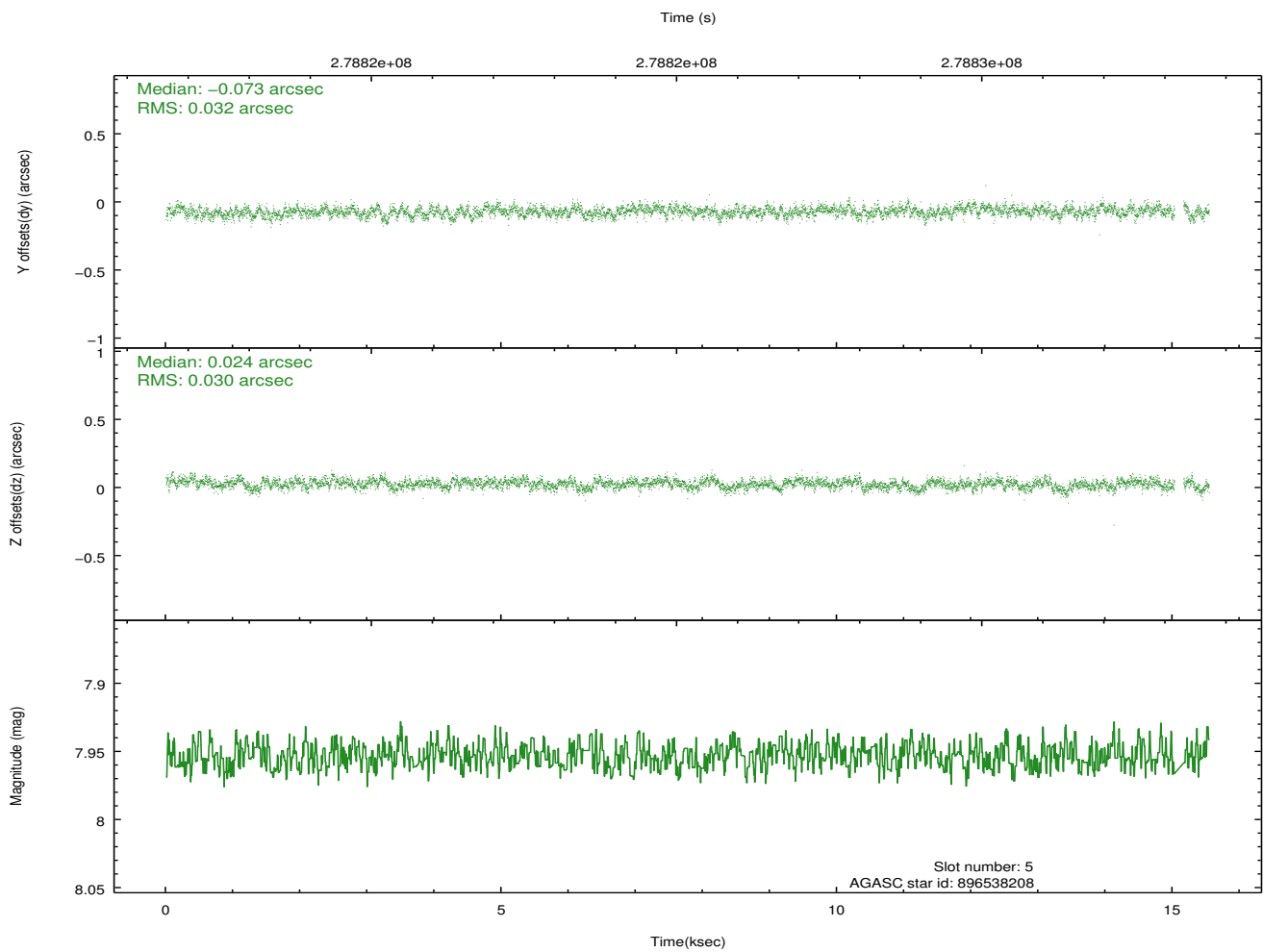
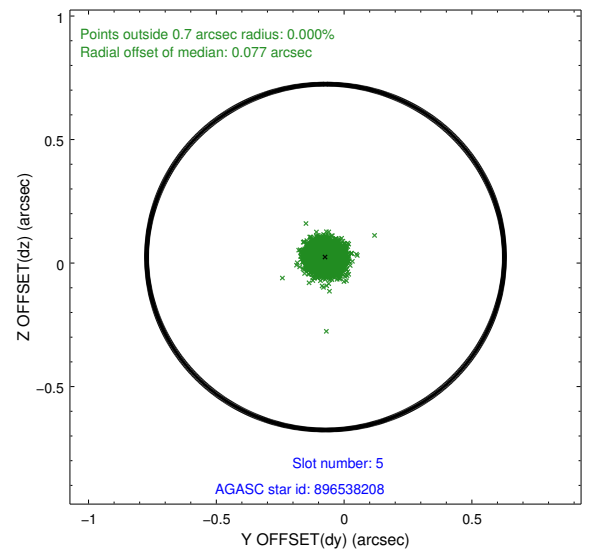
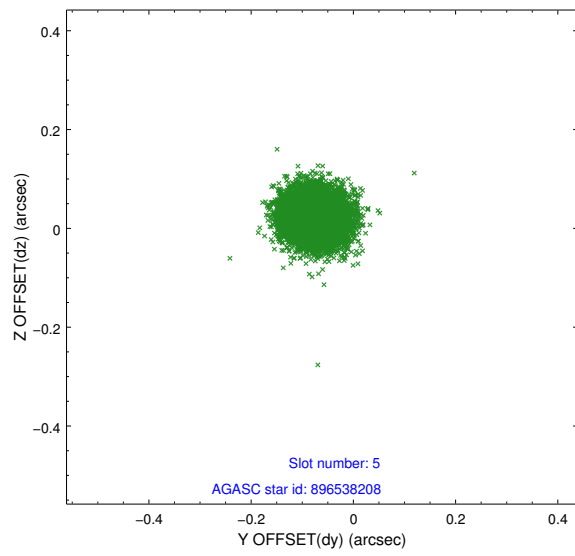
2.4.1 Slot 3



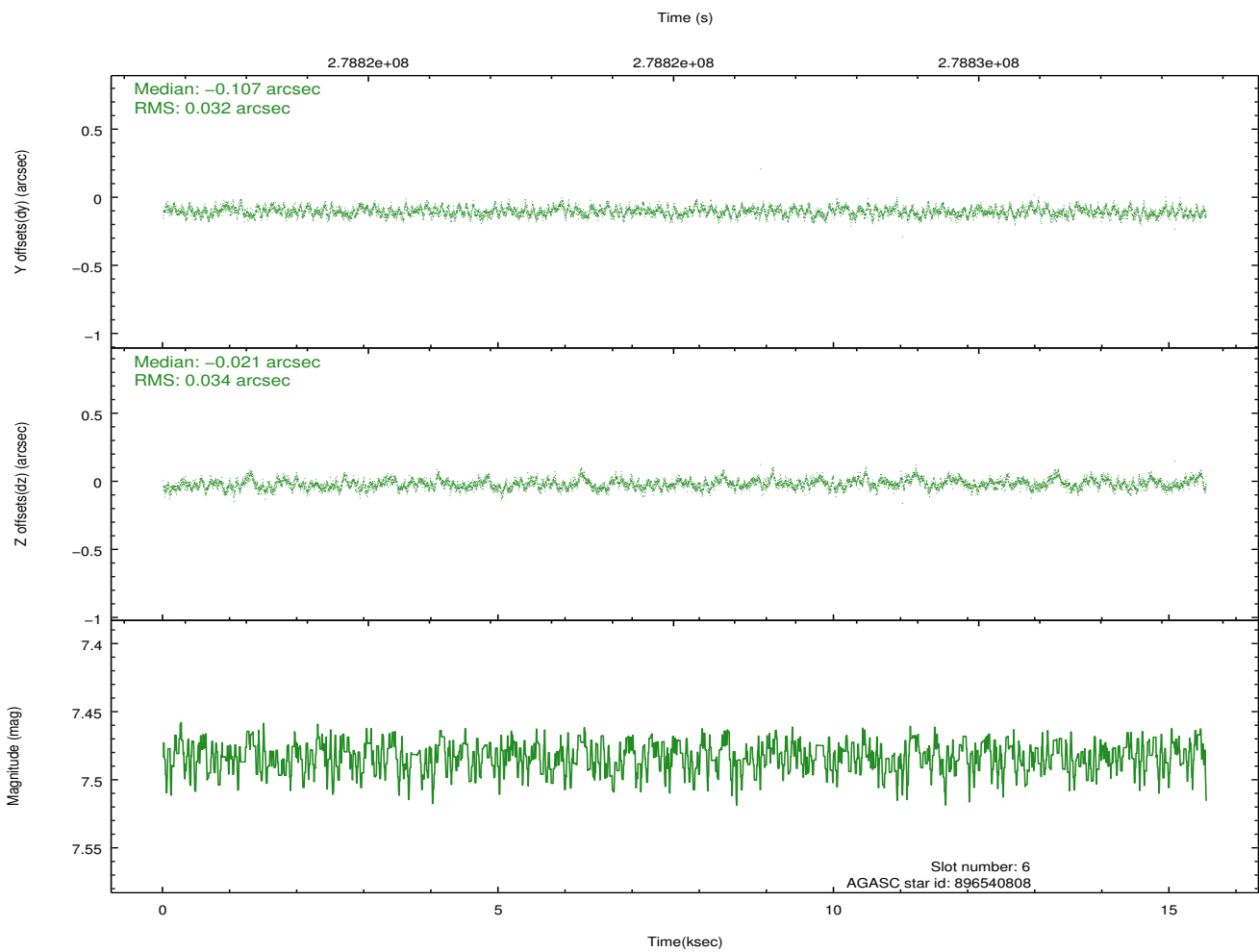
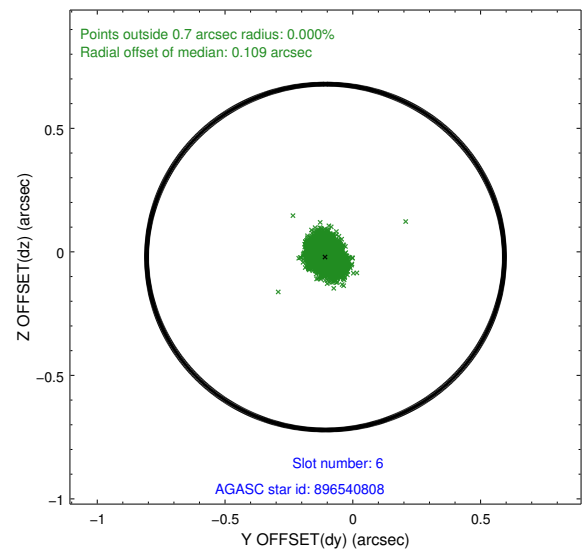
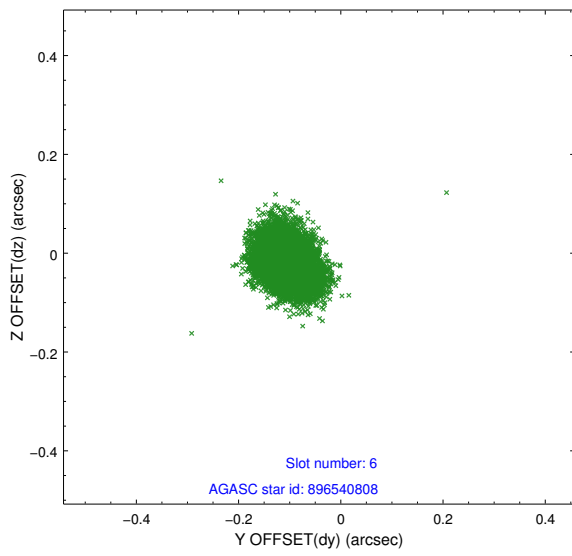
2.4.2 Slot 4



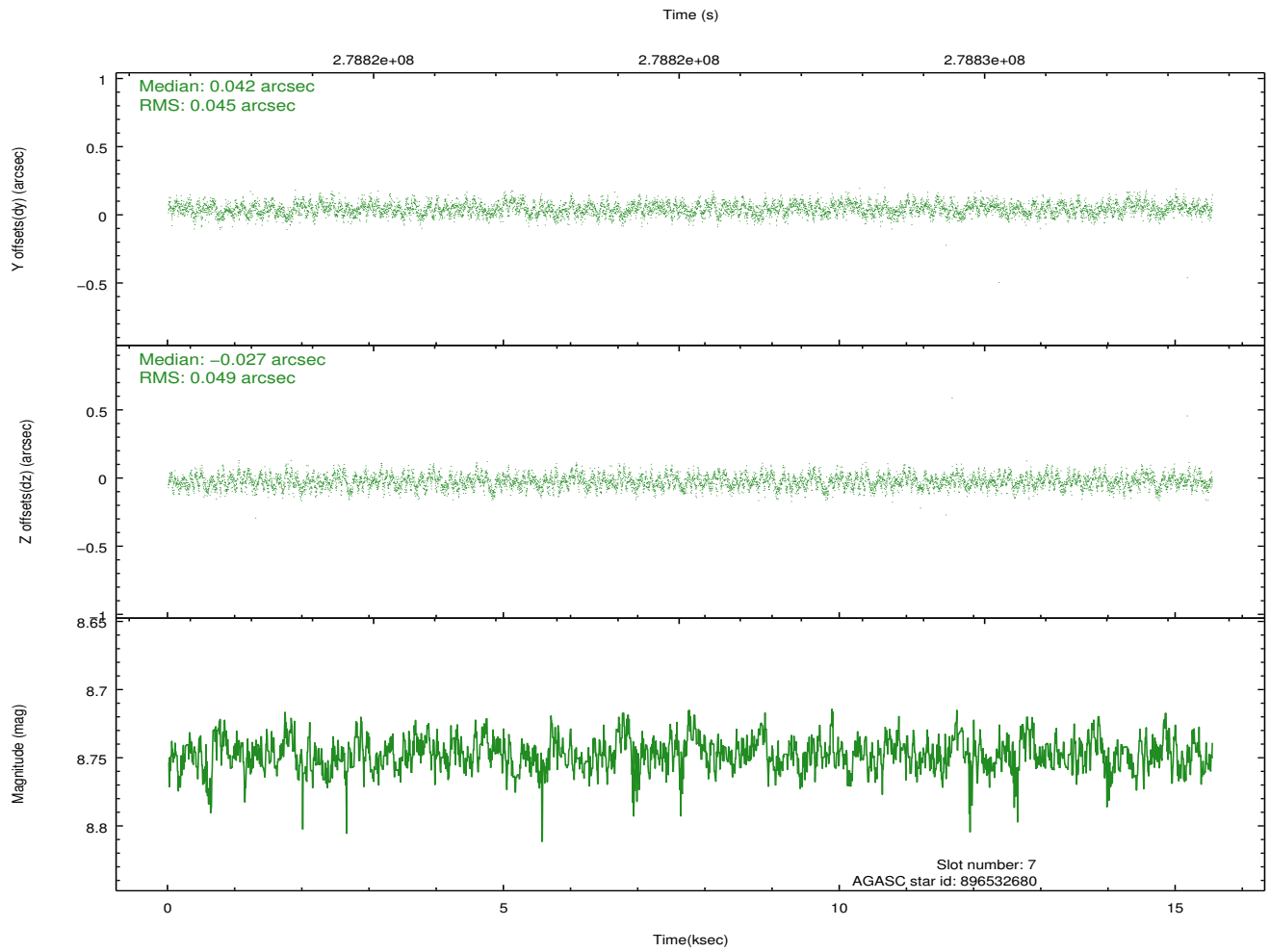
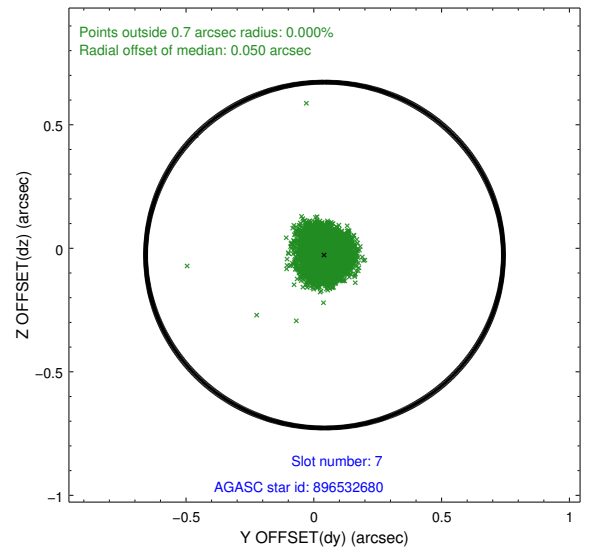
2.4.3 Slot 5



2.4.4 Slot 6

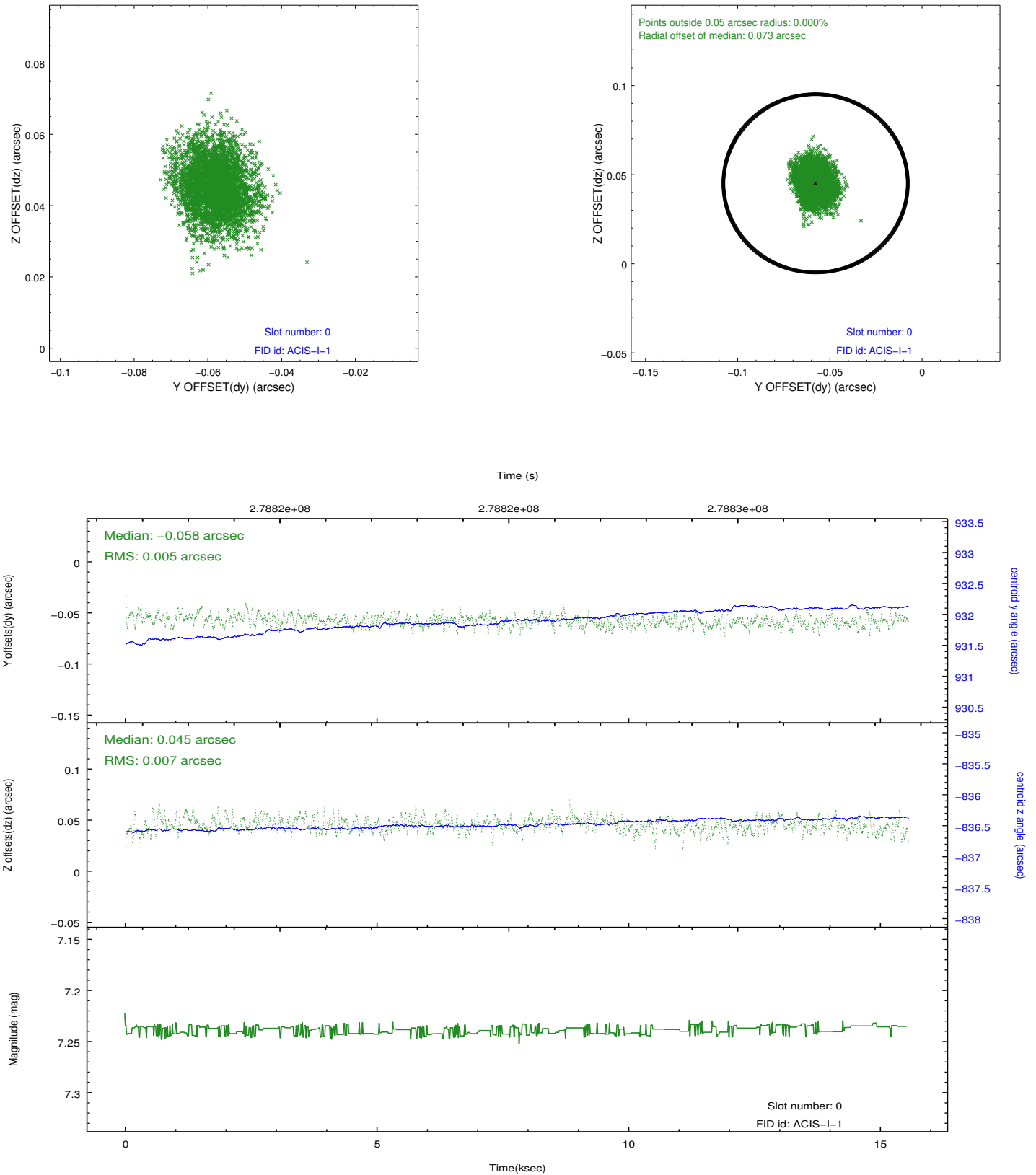


2.4.5 Slot 7

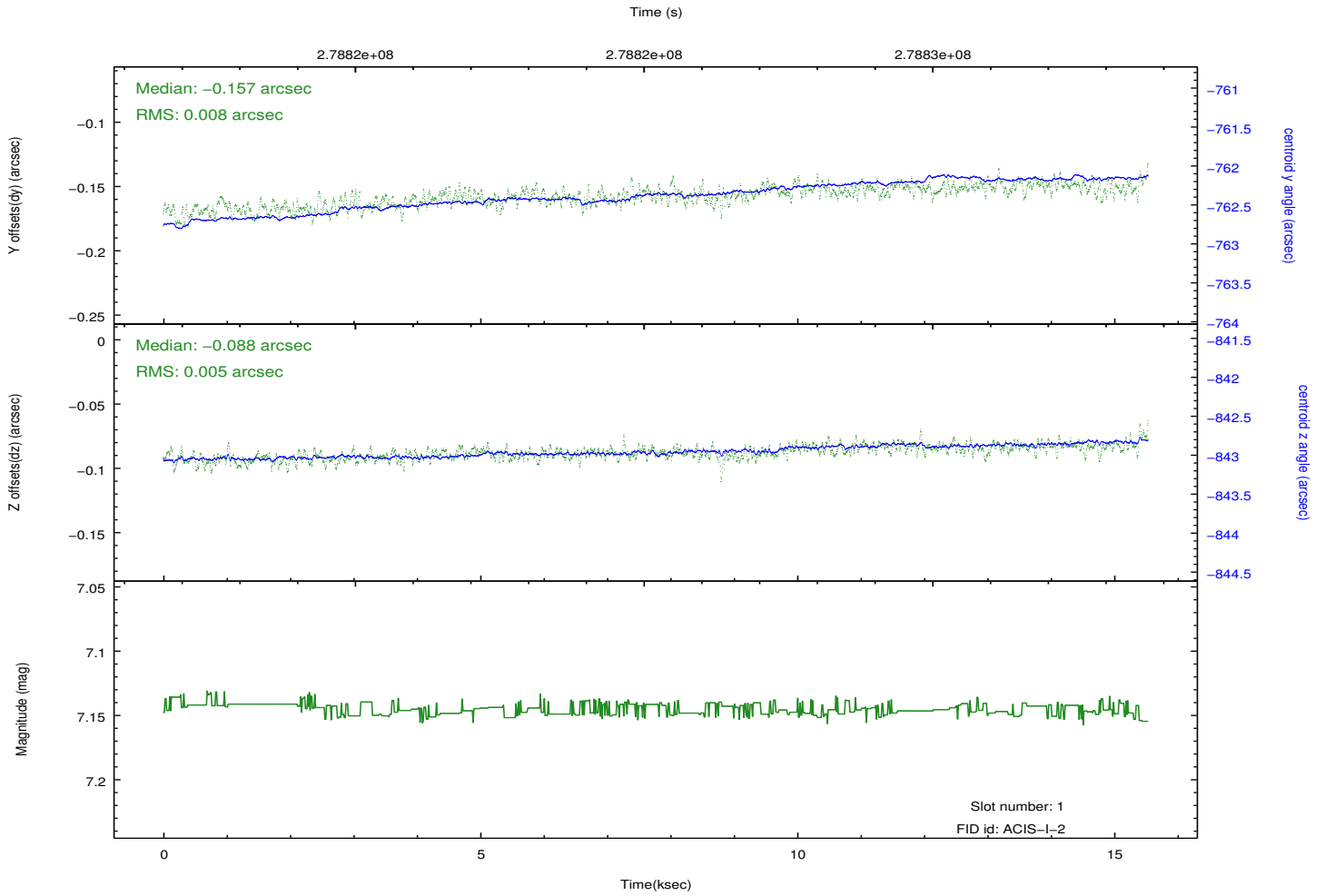
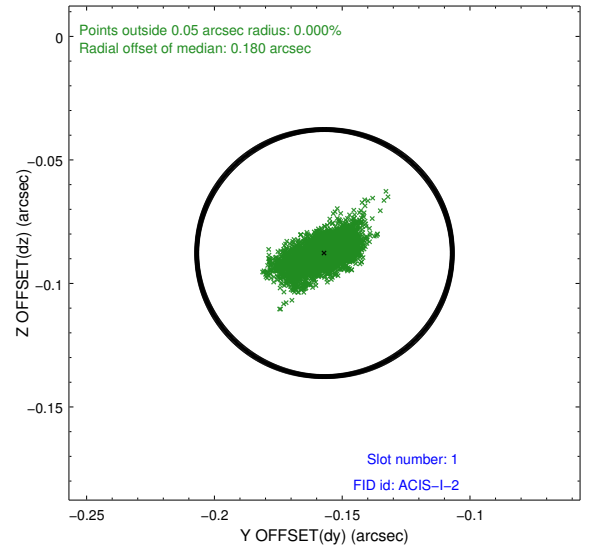
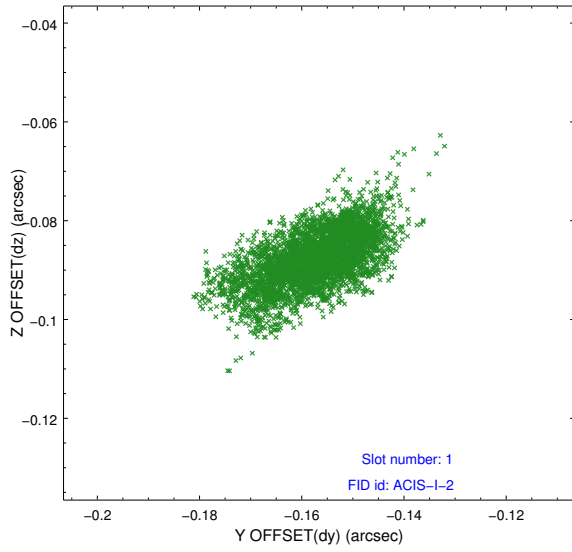


2.5 FID Slots

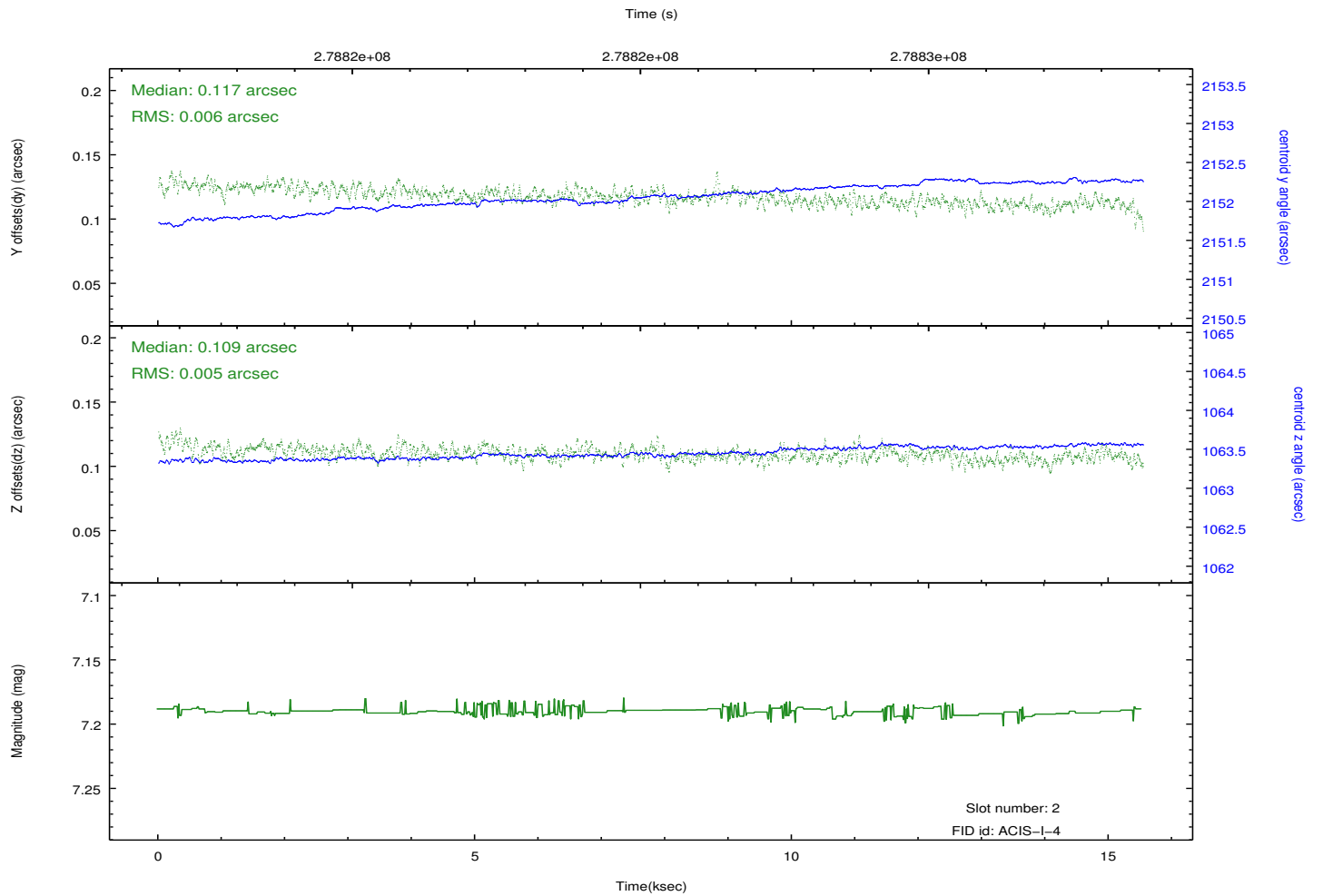
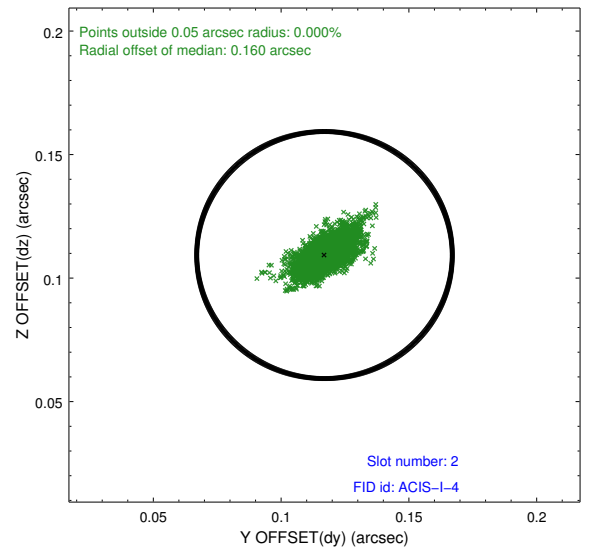
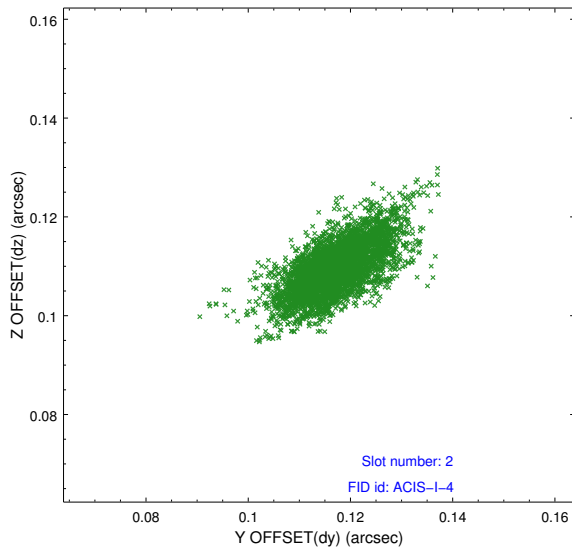
2.5.1 Slot 0



2.5.2 Slot 1



2.5.3 Slot 2



A Summary

A.1 Status

V&V Scientist	Beth Sundheim
V&V Date (YYYY-MM-DD)	2012.04.13
V&V Edition	1
V&V Disposition and Status	OK
V&V Charge Time	14.5545001

A.2 Comments

Joint proposal with NOAO.