

# V&V Reference Report

## L2 ASCDS Version : 8.4.3

Observation 7233 - L2 Version 2  
Chandra X-Ray Center

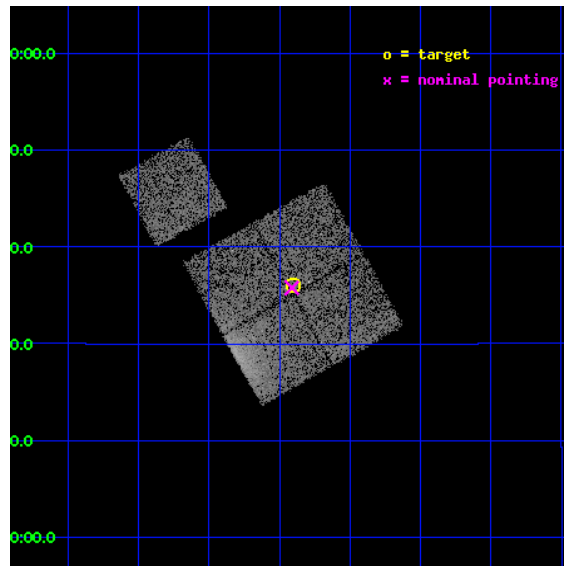
L2 Processing Date : Mar 18 2012

## Contents

<b>1</b>	<b>Front</b>	<b>2</b>
<b>2</b>	<b>OBI</b>	<b>3</b>
2.1	OBI . . . . .	3
2.1.1	Images . . . . .	3
2.1.2	Bias . . . . .	3
2.1.3	Parameters . . . . .	4
2.1.4	Events . . . . .	4
2.2	Compared Parameters . . . . .	5
2.3	Aspect . . . . .	6
2.4	Star Slots . . . . .	9
2.4.1	Slot 3 . . . . .	9
2.4.2	Slot 4 . . . . .	10
2.4.3	Slot 5 . . . . .	11
2.4.4	Slot 6 . . . . .	12
2.4.5	Slot 7 . . . . .	13
2.5	FID Slots . . . . .	14
2.5.1	Slot 0 . . . . .	14
2.5.2	Slot 1 . . . . .	15
2.5.3	Slot 2 . . . . .	16
<b>A</b>	<b>Summary</b>	<b>17</b>
A.1	Status . . . . .	17
A.2	Comments . . . . .	17

# 1 Front

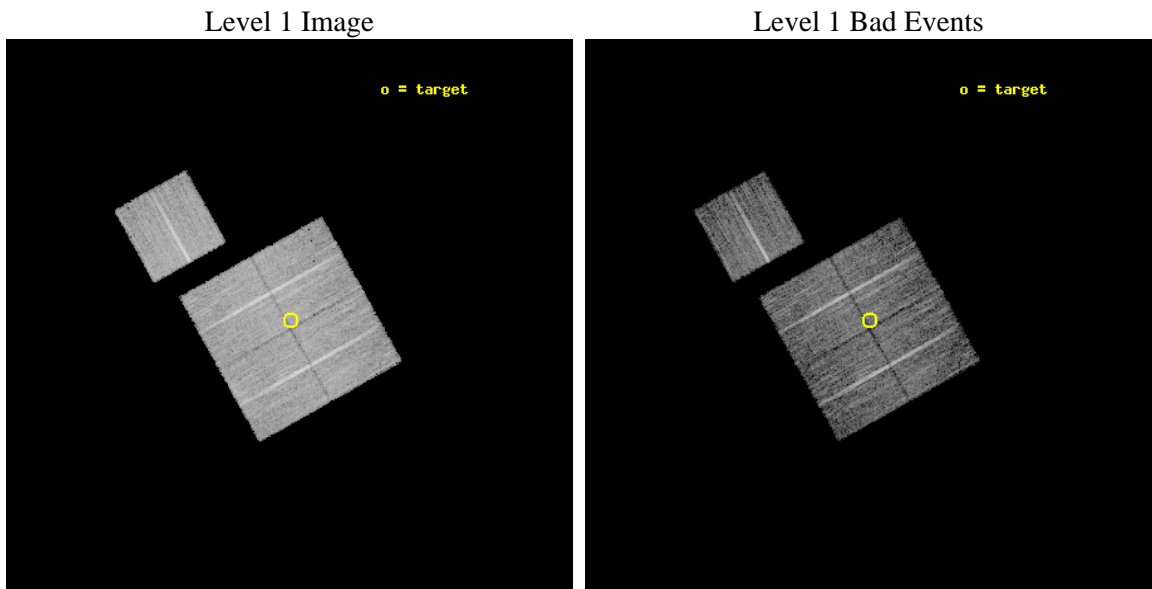
seq_num	800561	Sequence number
obs_id	7233	Observation id
title	Temperature profiles of relaxed galaxy clusters	Proposal title
observer	Dr Stephen Murray	Principal investigator
object	A478_OFFSET1	Source name
dtcycle	0	&#160
cycle	P	events from which exps? Prim/Second/Both
ra_targ	63.225	Observer's specified target RA [deg]
dec_targ	10.6	Observer's specified target Dec [deg]
ra_nom	63.227926653051	Nominal RA [deg]
dec_nom	10.596351268411	Nominal Dec [deg]
roll_nom	330.80815609422	Nominal Roll [deg]
revision	2	Processing version of data
ontime	9138.7999823987	Sum of GTIs [s]
livetime	9019.394832742	Livetime [s]
ontime0	9129.3770417273	Sum of GTIs [s]
ontime1	9138.7999823987	Sum of GTIs [s]
ontime2	9129.3771114051	Sum of GTIs [s]
ontime3	9138.7999823987	Sum of GTIs [s]
ontime6	9138.7999823987	Sum of GTIs [s]
l2events	32404	Number of level 2 events



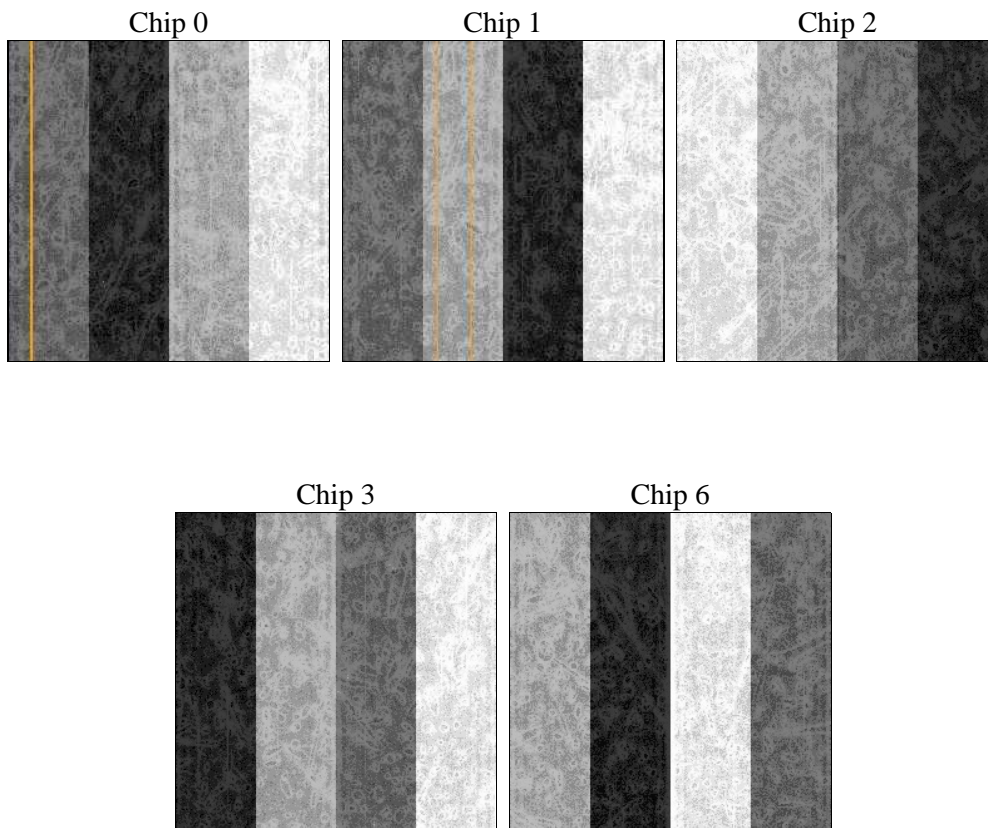
## 2 OBI

### 2.1 OBI

#### 2.1.1 Images



#### 2.1.2 Bias



### 2.1.3 Parameters

obi_num	0	Obi number	sched_exp_time	9000.000000	[s] Scheduled observation exposure time
ascdsver	8.4.3.1	Processing system revision	ontime	9138.7999823987	Sum of GTIs [s]
caldbver	4.4.8	&#160	ontime0	9129.3770417273	Sum of GTIs [s]
date	2012-03-18T08:25:06	Date and time of file creation	ontime1	9138.7999823987	Sum of GTIs [s]
revision	2	Processing version of data	ontime2	9129.3771114051	Sum of GTIs [s]
			ontime3	9138.7999823987	Sum of GTIs [s]
			ontime6	9138.7999823987	Sum of GTIs [s]
			l1events	336770	Number of level 1 events

### 2.1.4 Events

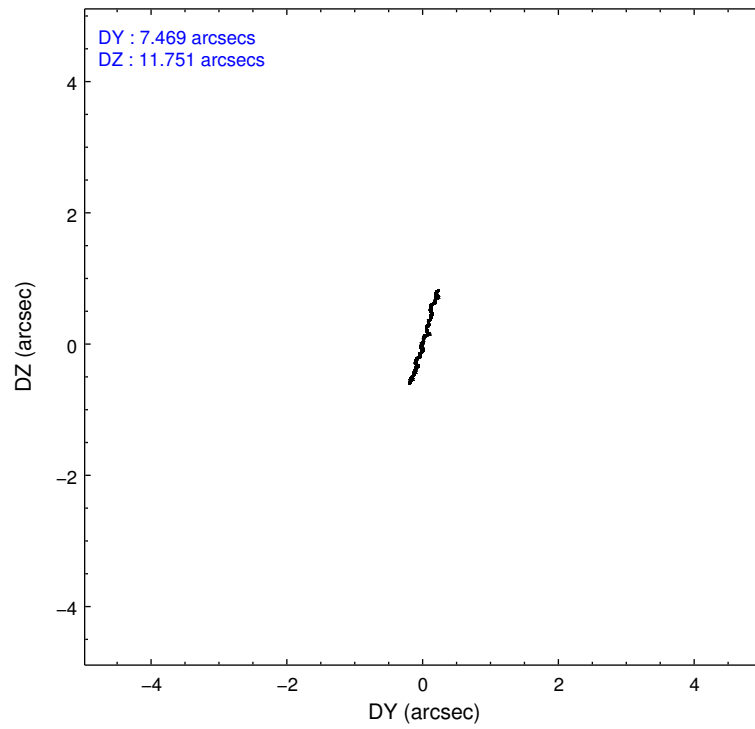
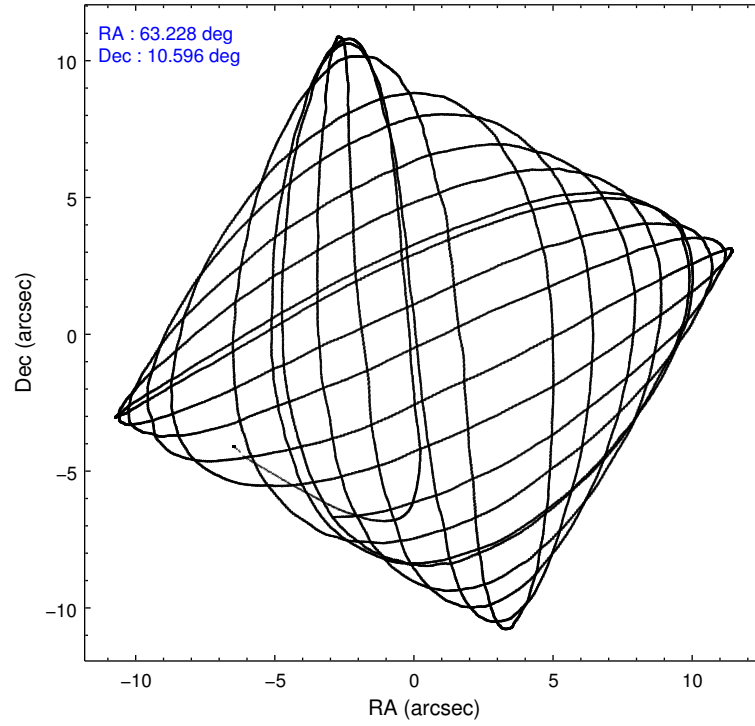
	ccd 0	ccd 1	ccd 2	ccd 3	ccd 6
level 1 events	67375	63073	71918	65275	69129
rejected events	55796	56117	64700	59211	62826
rejected %	82%	88%	89%	90%	90%

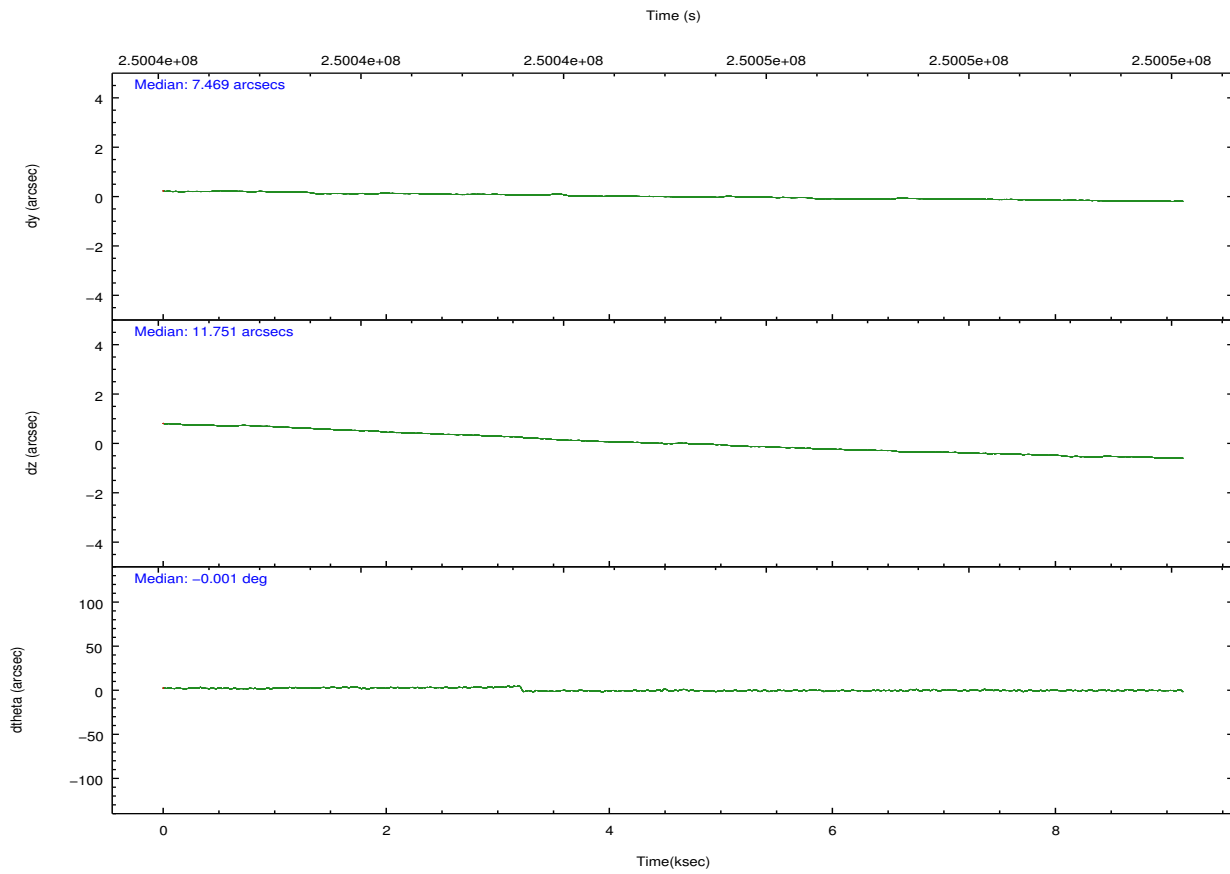
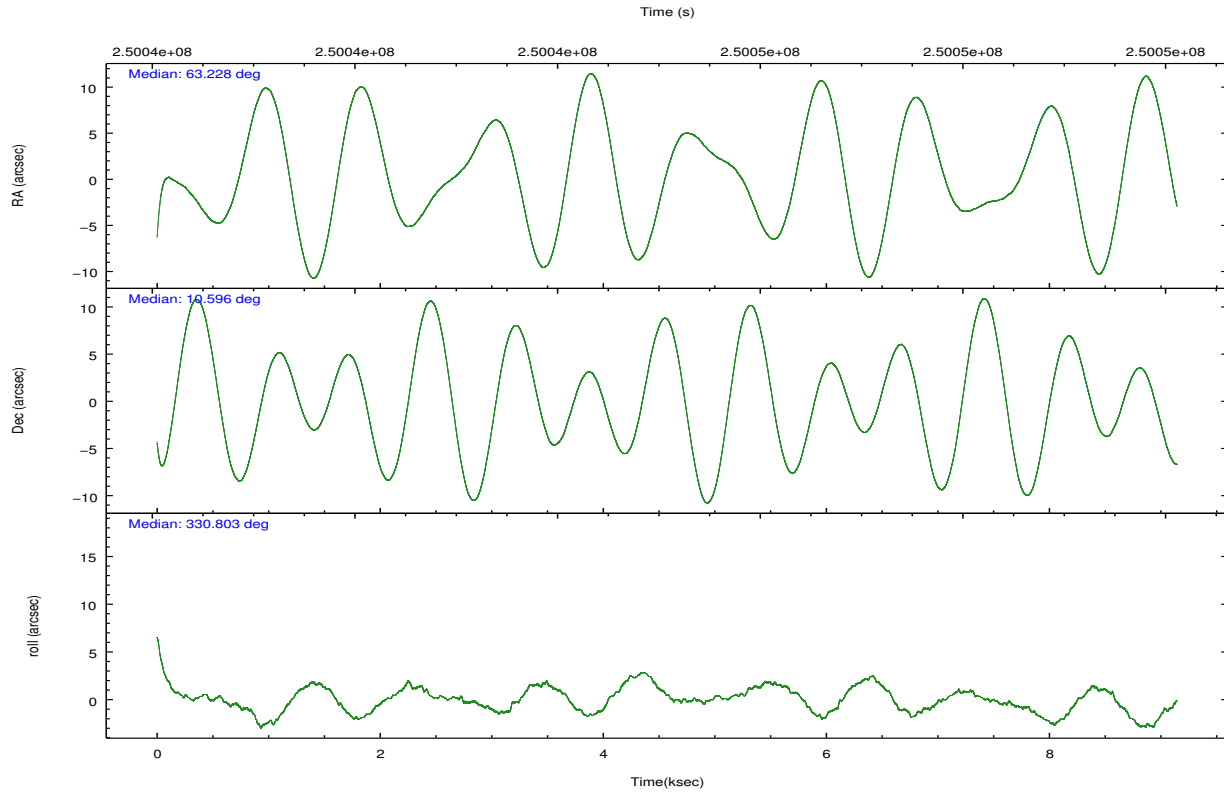
	ccd 0	ccd 1	ccd 2	ccd 3	ccd 6
grade 0 events	6675	2803	3332	2454	2324
	9%	4%	4%	3%	3%
grade 1 events	44	30	45	36	47
	0%	0%	0%	0%	0%
grade 2 events	2111	1608	1705	1299	1471
	3%	2%	2%	1%	2%
grade 3 events	1008	787	738	738	747
	1%	1%	1%	1%	1%
grade 4 events	896	835	725	746	780
	1%	1%	1%	1%	1%
grade 5 events	2274	2559	2252	2651	2691
	3%	4%	3%	4%	3%
grade 6 events	1439	1447	1195	1244	1491
	2%	2%	1%	1%	2%
grade 7 events	52928	53004	61926	56107	59578
	78%	84%	86%	85%	86%

## 2.2 Compared Parameters

Parameter	Planned	Actual	Parameter	Planned	Actual
Instrument	ACIS	ACIS	Obspar format version number	7	7
Detector	ACIS-01236	ACIS-01236	Obspar file type	PREDICTED	ACTUAL
Grating	NONE	NONE	Obspar update status	NONE	UPDATED
Data mode	VFAINT	VFAINT	Number of optional ACIS chips dropped	0	0
Observation mode	POINTING	POINTING	On-chip summing requested	N	N
[deg] Pointing RA	63.200047	63.22792665305096	Subarray requested	NONE	NONE
[deg] Pointing Dec	10.595840	10.59635126841093	Alternating exposures requested	N	N
[deg] Pointing Roll	330.604581	330.8081560942181	[s] Primary exposure time	0.000000	3.1
[mm] SIM focus pos	-0.782348	-0.7809083437167272			
[mm] SIM defocus	0	0.001439871863259334			
[mm] SIM translation stage pos	-233.592463	-233.5874344608287			
[mm] SIM translation stage offset	0	-0.005018542100998502			
[s] Observation start time (MET)	250040656.184000	250039280.1664			
Observation start date	2005-12-03T23:43:12	2005-12-03T23:21:20			
[s] Observation end time (MET)	250049656.184000	250050074.9544			
Observation end date	2005-12-04T02:13:12	2005-12-04T02:21:14			
Read mode	TIMED	TIMED			

## 2.3 Aspect



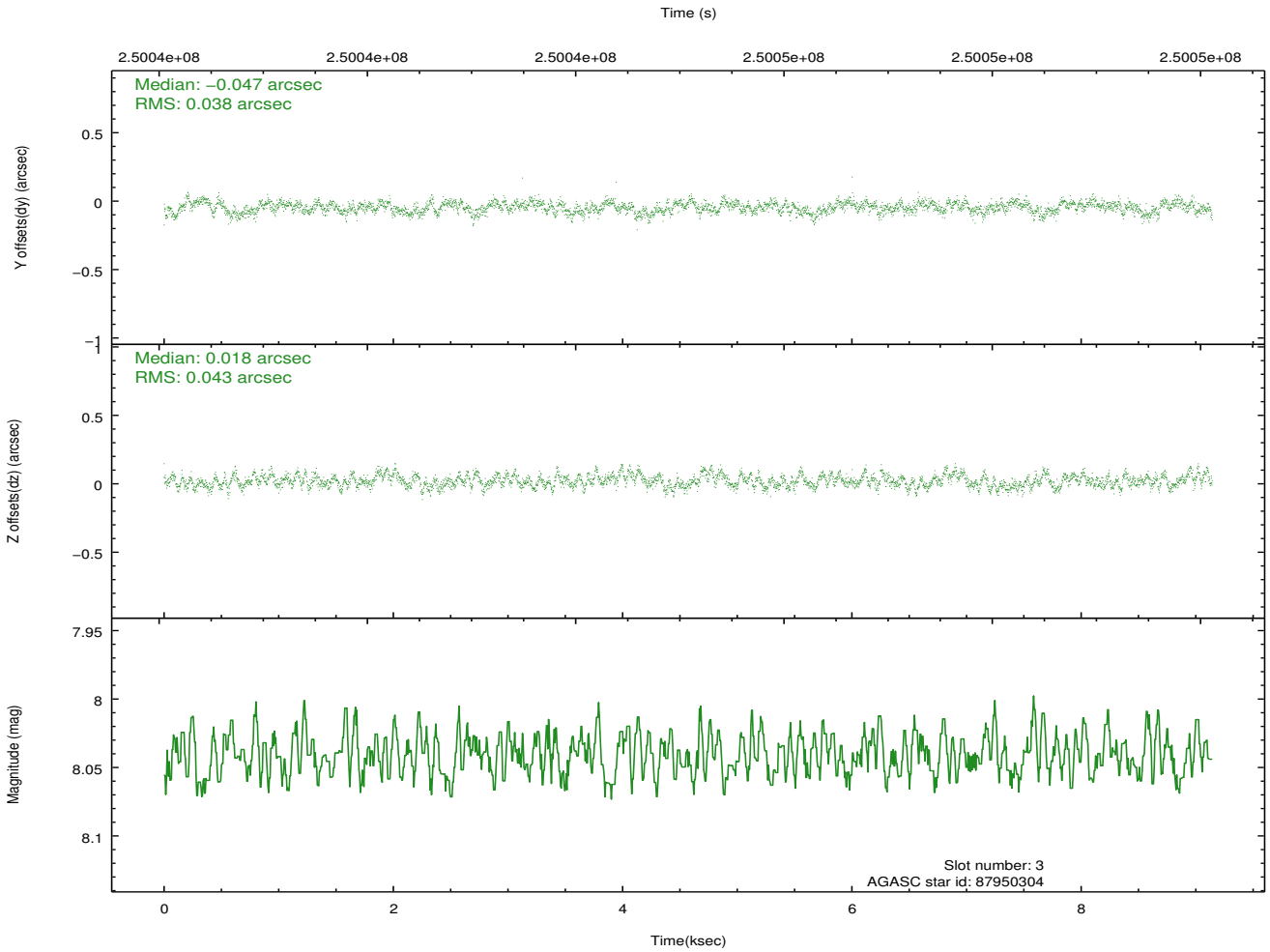
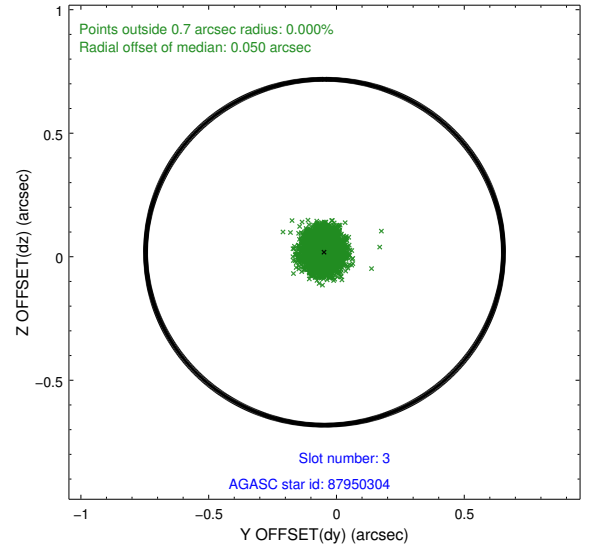
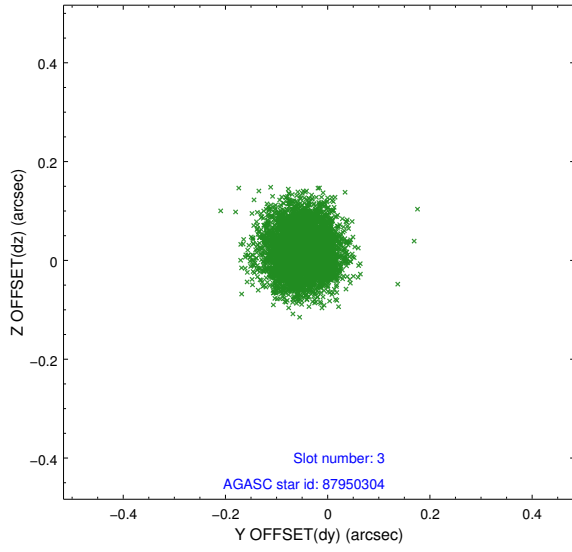


### Slot Statistics

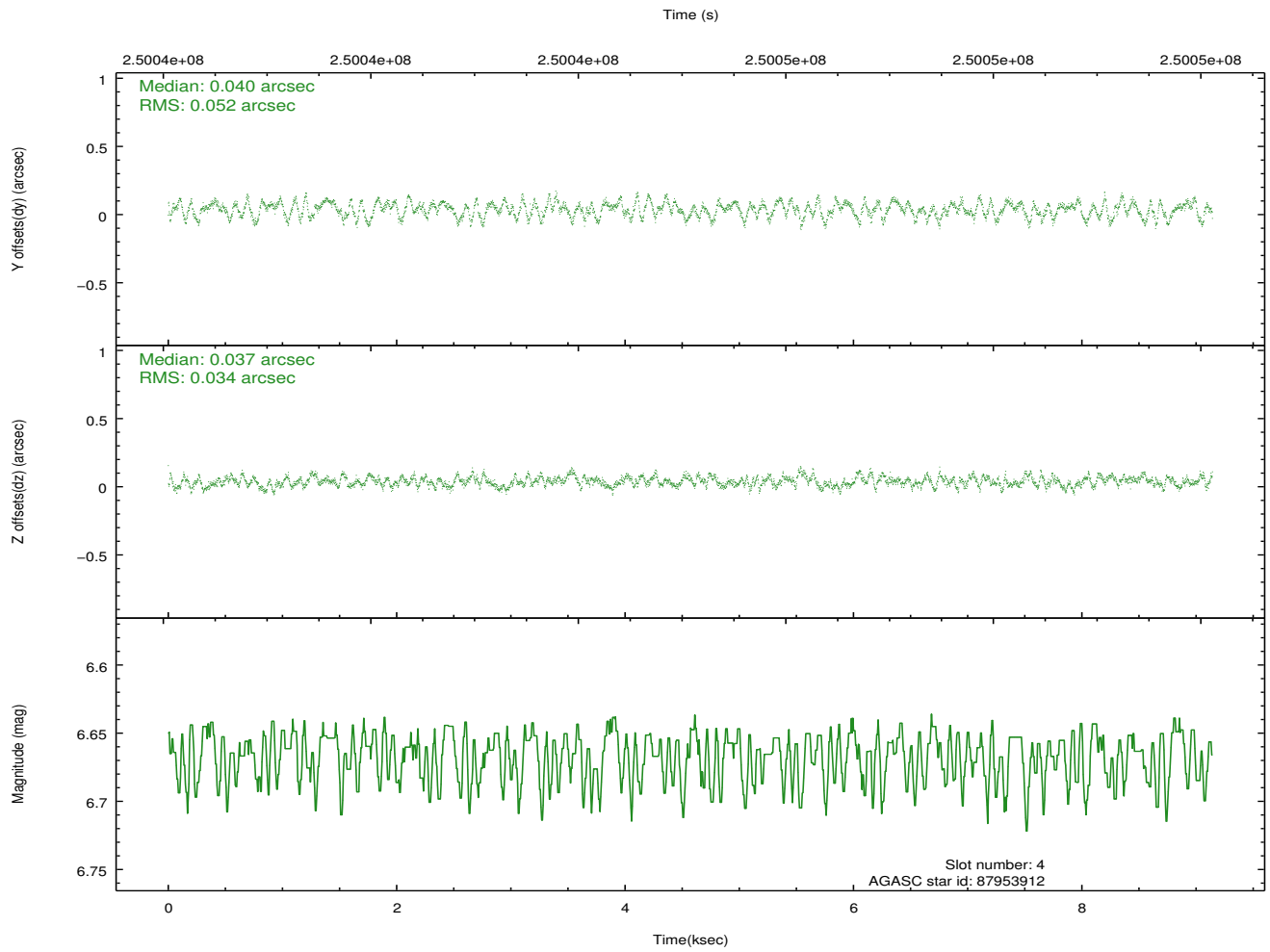
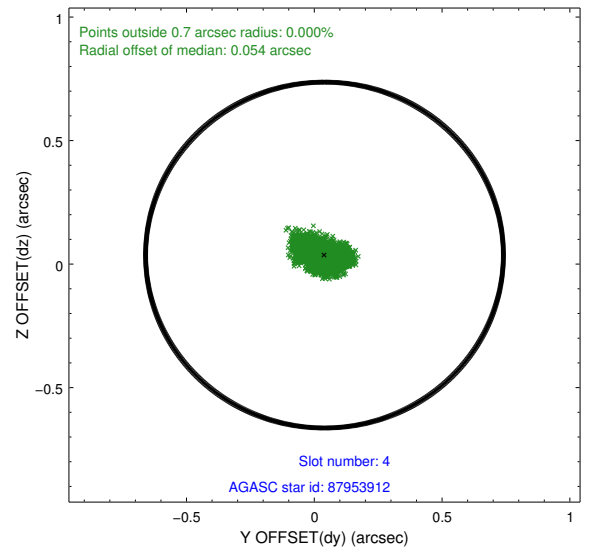
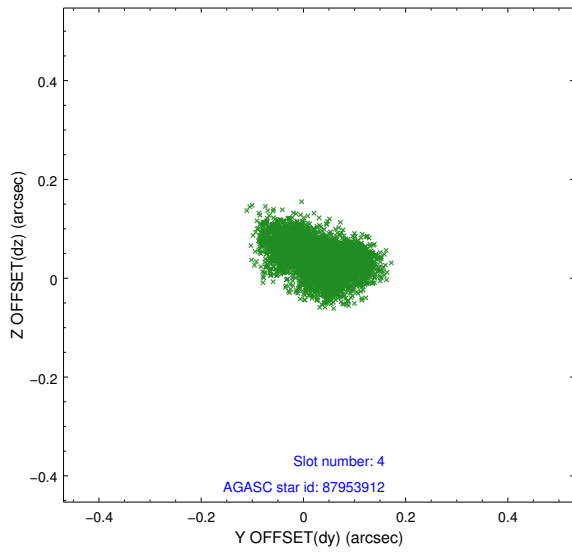
slot	status	id	mag	n_pts	med_dy	med_dz	dr1	dr2	ra	dec	mean_y	mean_z
0	FID	ACIS-I-1	7.24	2231	-0.014	-0.057	0.036	0.050	0.000000	0.000000	932.16	-835.37
1	FID	ACIS-I-4	7.18	2231	0.123	0.069	0.028	0.040	0.000000	0.000000	2152.71	1064.22
2	FID	ACIS-I-5	7.22	2231	-0.207	0.058	0.018	0.028	0.000000	0.000000	-1815.23	1062.82
3	GUIDE	87950304	8.04	4461	-0.047	0.018	0.061	0.098	63.753878	10.748130	1436.65	1440.77
4	GUIDE	87953912	6.67	4460	0.040	0.037	0.066	0.109	63.394036	10.212467	1276.87	-864.44
5	GUIDE	87954552	8.33	4458	0.024	-0.171	0.069	0.112	63.195345	11.171305	-1031.06	1796.44
6	GUIDE	88343064	8.78	4461	-0.011	-0.101	0.064	0.103	63.058020	11.314635	-1707.34	2008.75
7	GUIDE	87818344	8.36	4459	-0.005	0.215	0.055	0.089	62.599114	10.854229	-2308.96	-230.07

## 2.4 Star Slots

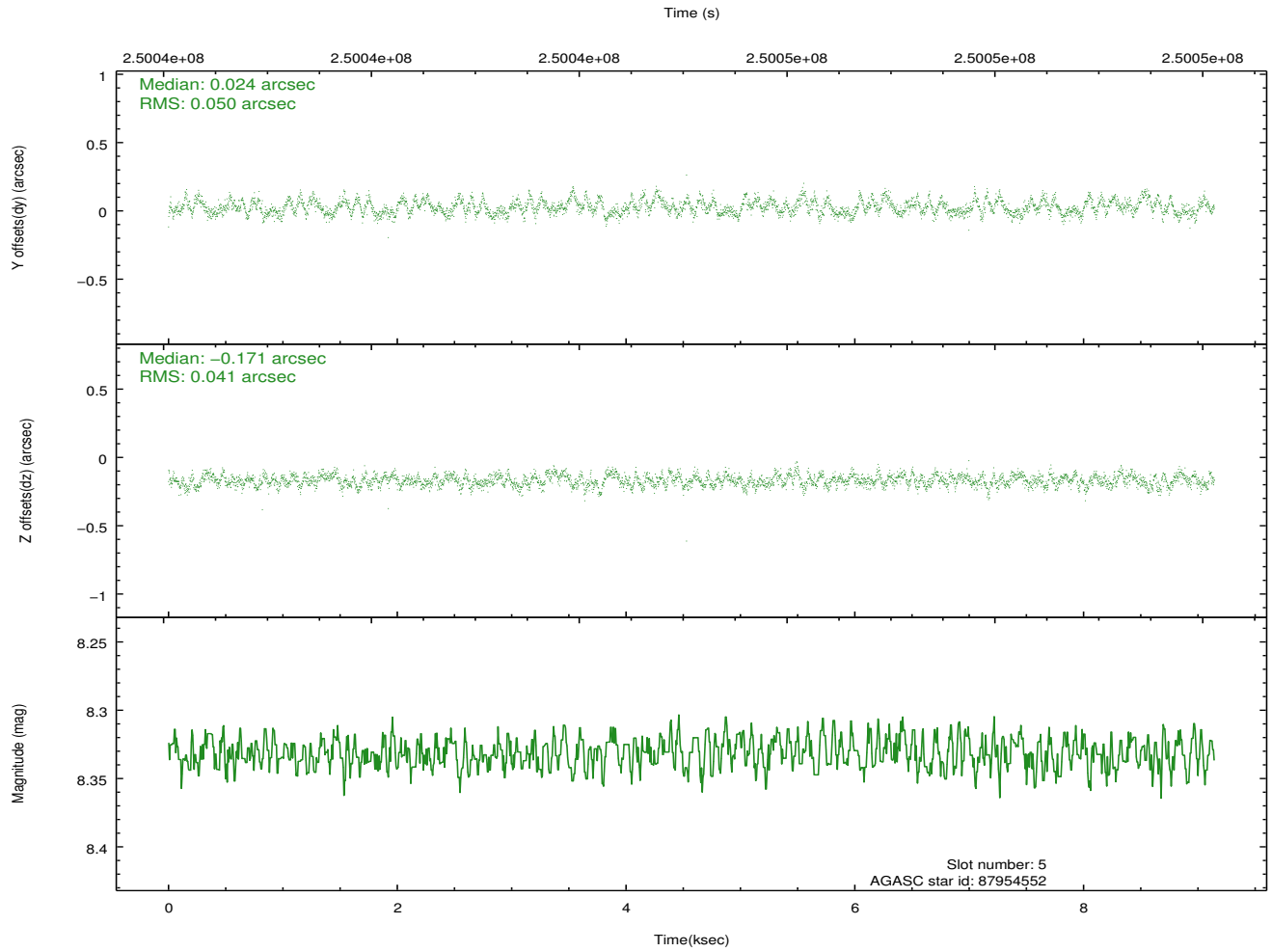
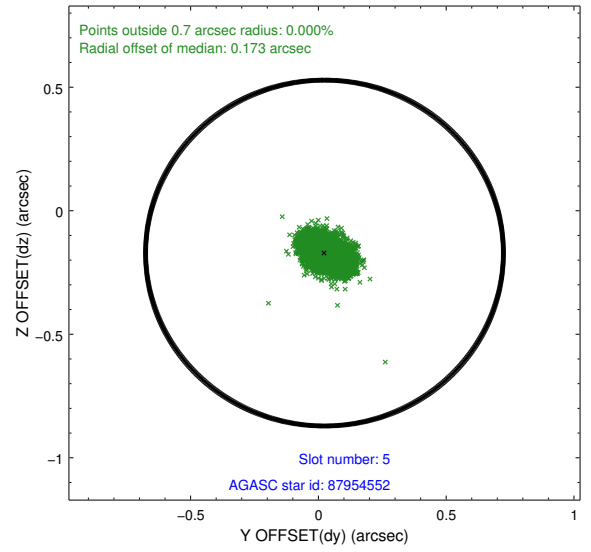
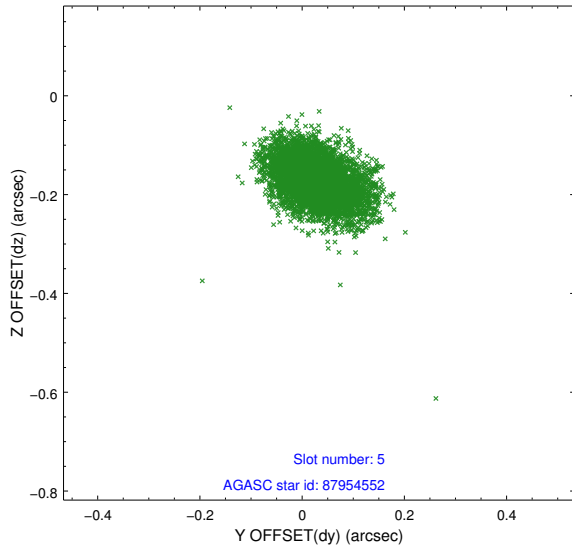
### 2.4.1 Slot 3



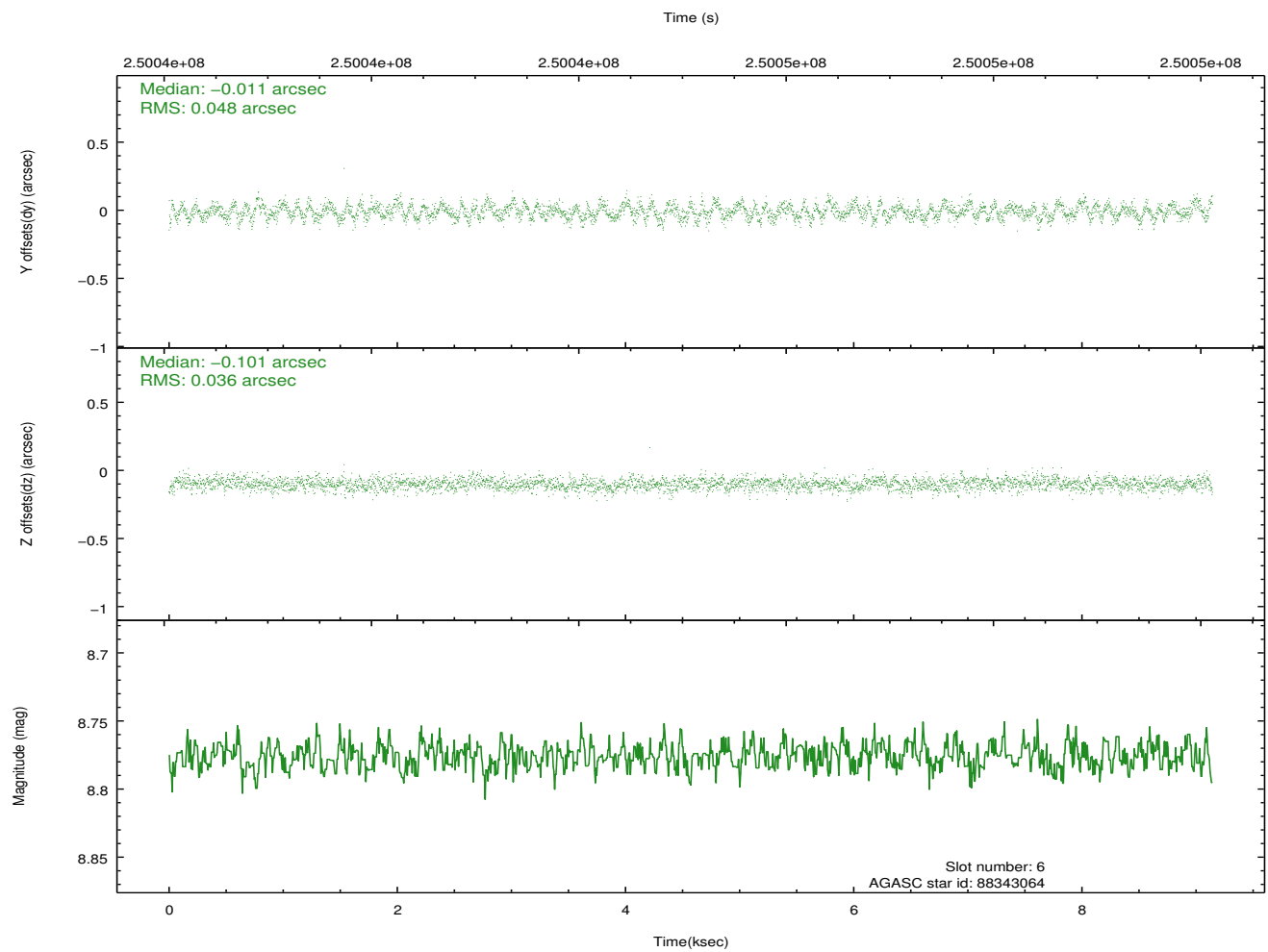
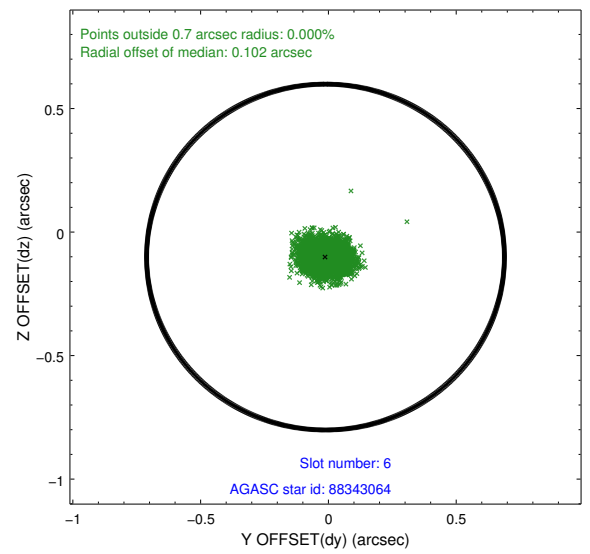
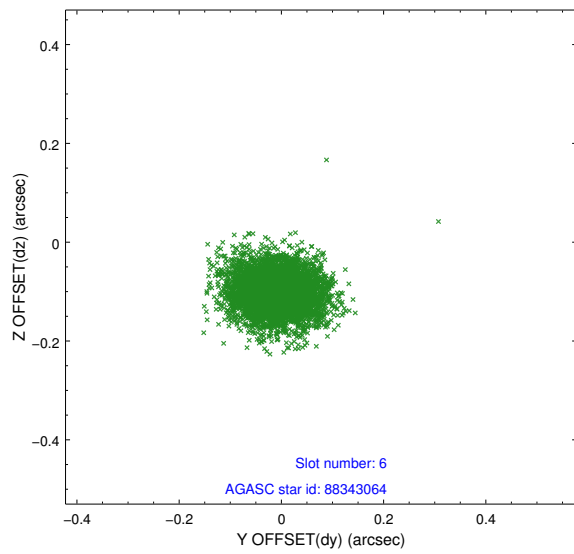
## 2.4.2 Slot 4



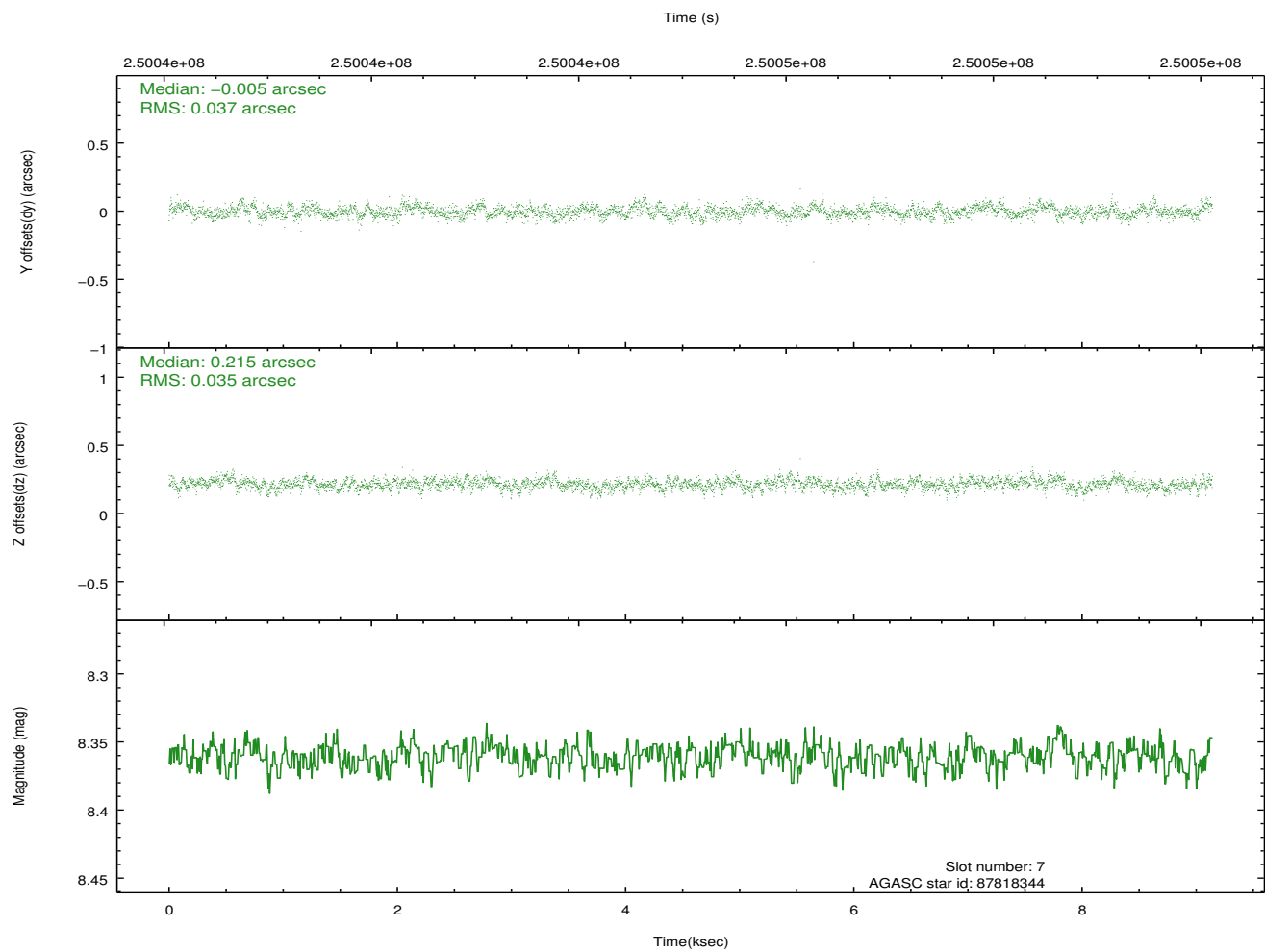
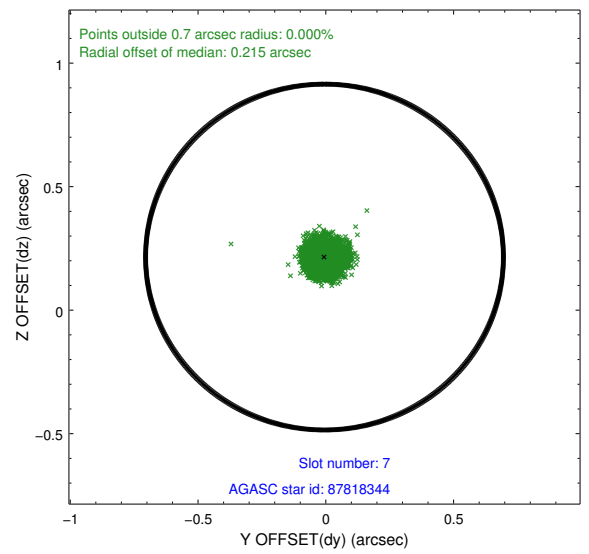
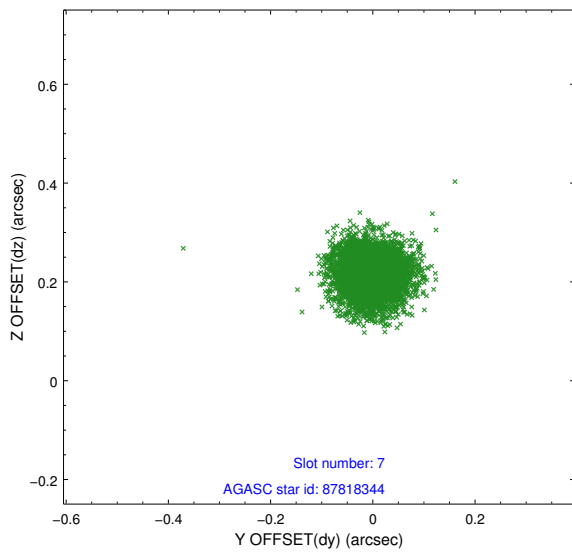
### 2.4.3 Slot 5



## 2.4.4 Slot 6

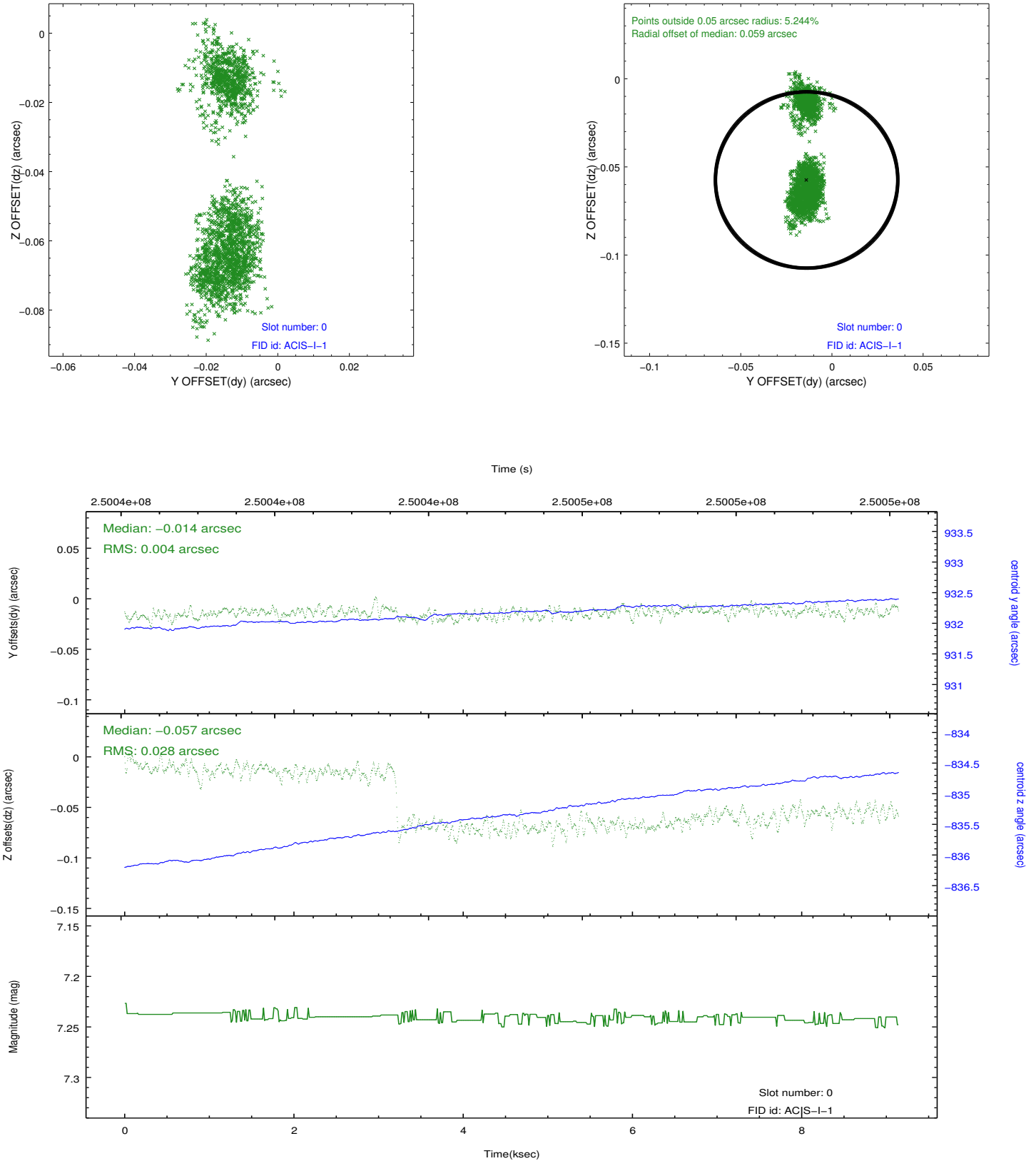


## 2.4.5 Slot 7

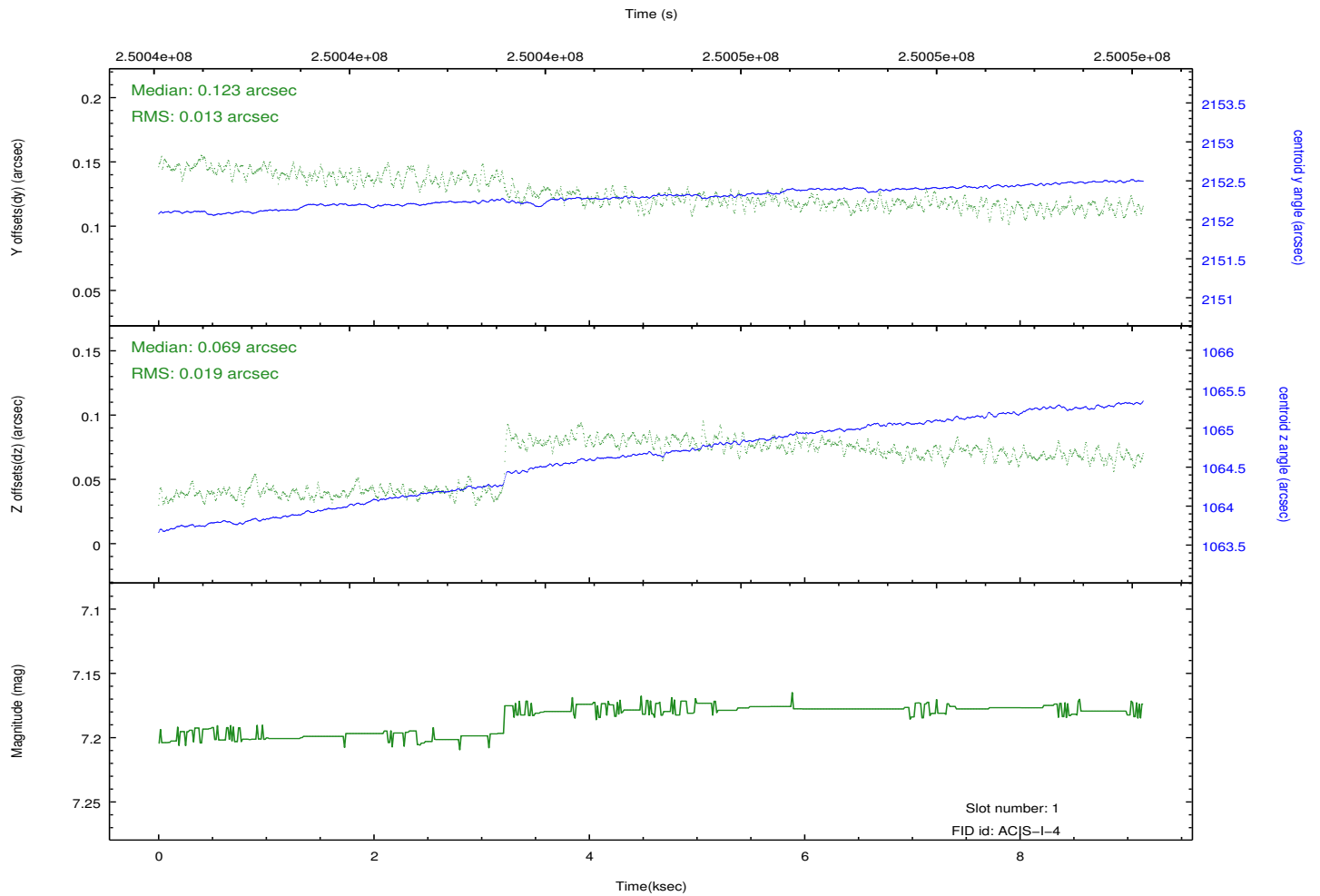
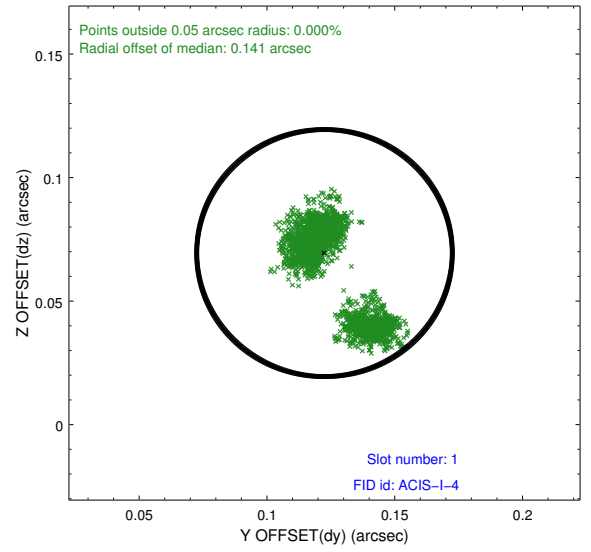
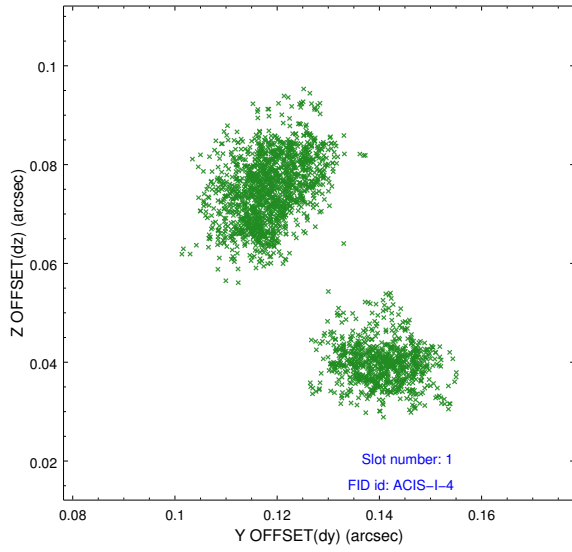


## 2.5 FID Slots

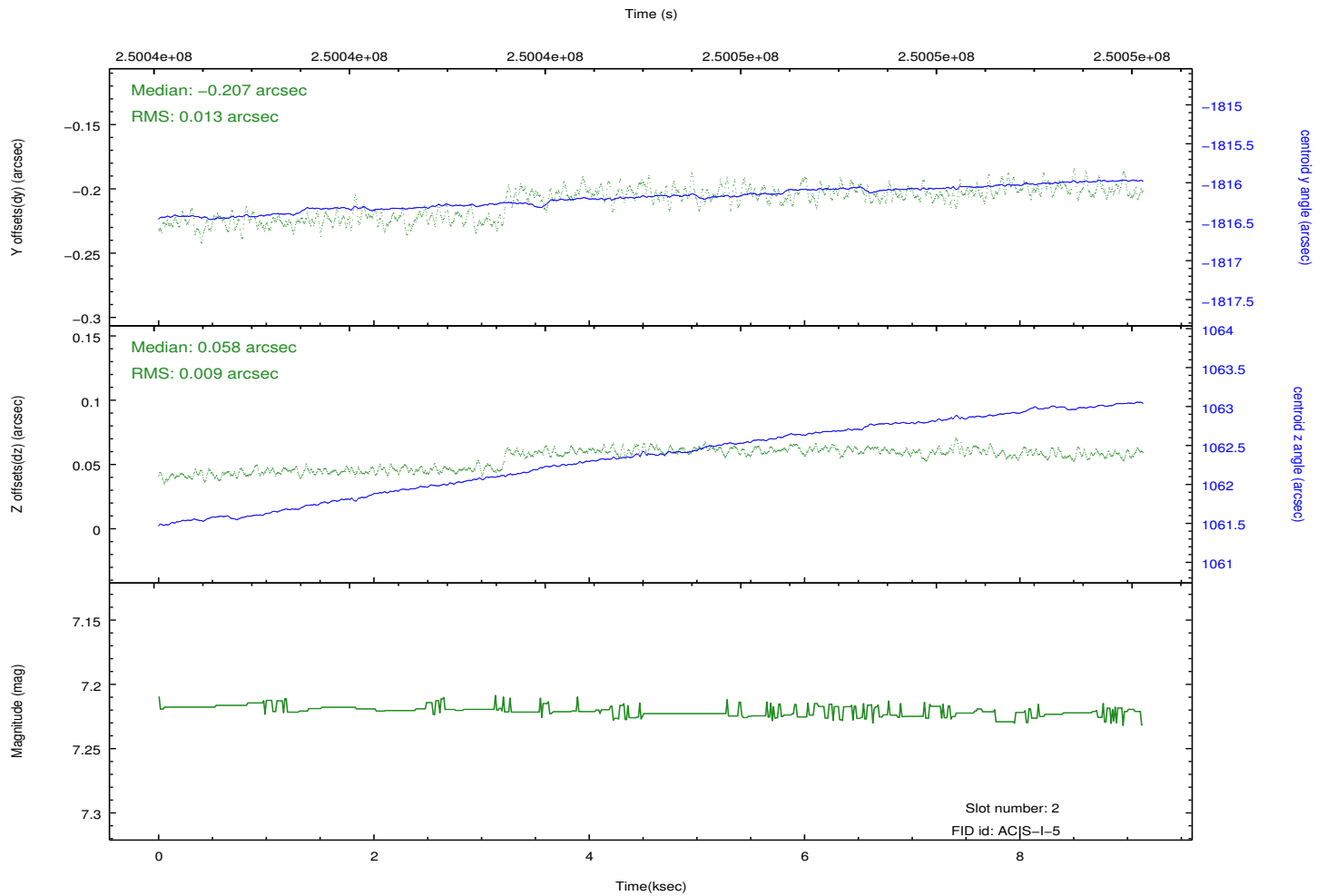
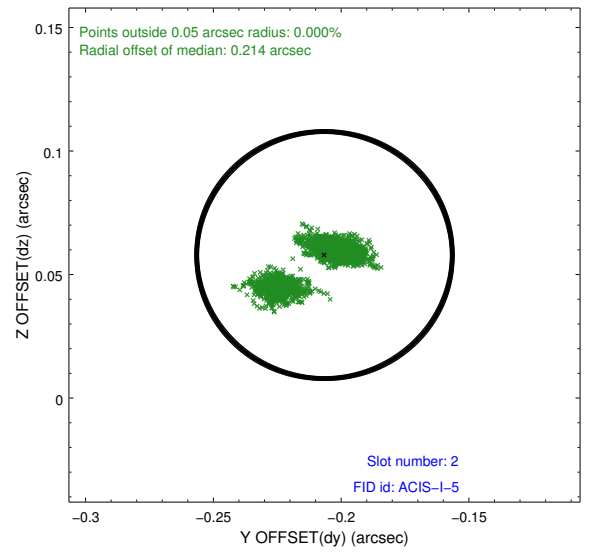
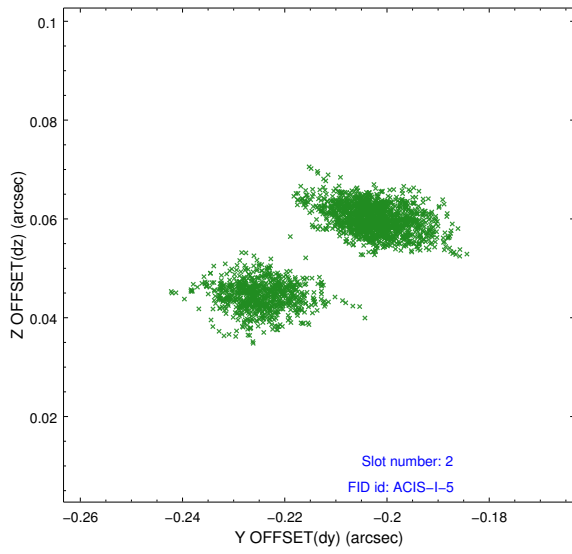
### 2.5.1 Slot 0



## 2.5.2 Slot 1



### 2.5.3 Slot 2



# A Summary

## A.1 Status

V&V Scientist	Jen Lauer
V&V Date (YYYY-MM-DD)	2012.03.19
V&V Edition	1
V&V Disposition and Status	OK
V&V Charge Time	9.138799

## A.2 Comments