

V&V Reference Report

L2 ASCDS Version : 8.4.3

Observation 7283 - L2 Version 4
Chandra X-Ray Center

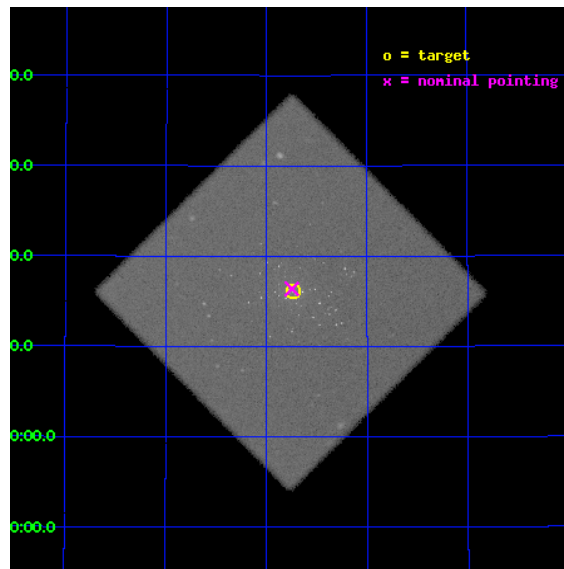
L2 Processing Date : Aug 11 2012

Contents

1	Front	2
2	OBI	3
2.1	OBI	3
2.1.1	Images	3
2.1.2	Parameters	4
2.1.3	Events	4
2.2	Compared Parameters	5
2.3	Aspect	6
2.4	Star Slots	9
2.4.1	Slot 3	9
2.4.2	Slot 4	10
2.4.3	Slot 5	11
2.4.4	Slot 6	12
2.4.5	Slot 7	13
2.5	FID Slots	14
2.5.1	Slot 0	14
2.5.2	Slot 1	15
2.5.3	Slot 2	16
A	Summary	17
A.1	Status	17
A.2	Comments	17

1 Front

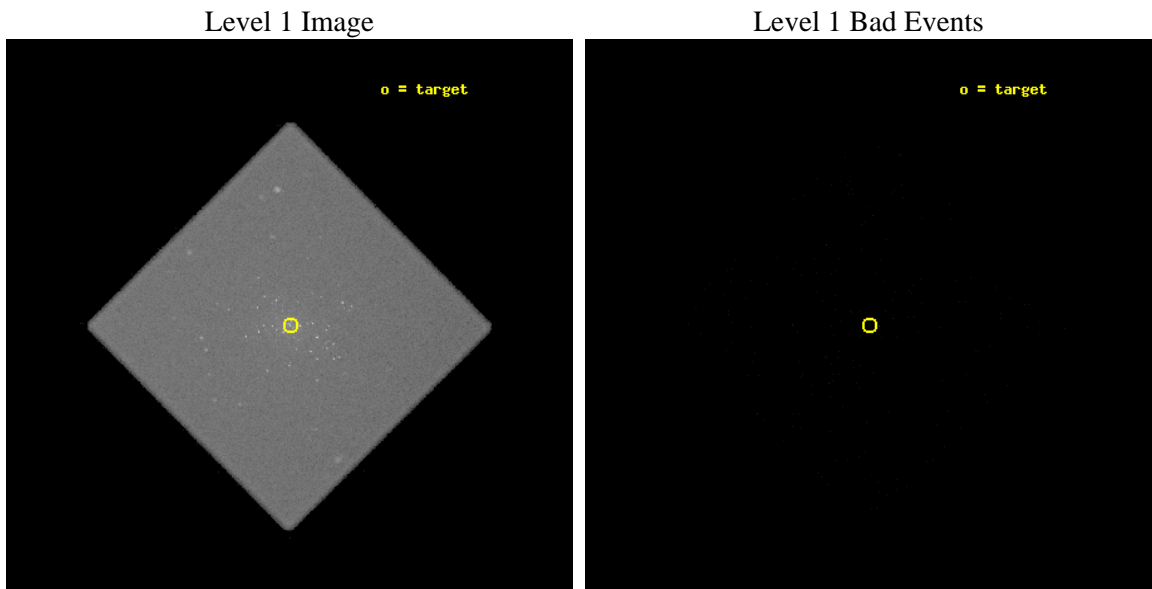
seq_num	300173	Sequence number
obs_id	7283	Observation id
title	Monitoring the supersoft source state of many optical novae in the core of M 31	Proposal title
observer	Dr. Wolfgang Pietsch	Principal investigator
object	M31	Source name
ra_targ	10.684583	Observer's specified target RA [deg]
dec_targ	41.269278	Observer's specified target Dec [deg]
ra_nom	10.686683639039	Nominal RA [deg]
dec_nom	41.273072556369	Nominal Dec [deg]
roll_nom	90.262749993069	Nominal Roll [deg]
revision	4	Processing version of data
ontime	20119.982190132	[s]
livetime	19941.752757694	Ontime multiplied by DTCOR
l2events	999653	Number of level 2 events



2 OBI

2.1 OBI

2.1.1 Images



2.1.2 Parameters

obi_num	0	Obi number	sched_exp_time	20000.000000	[s] Scheduled observation exposure time
ascdsver	8.4.5	Processing system revision	ontime	20119.982190132	[s]
caldbver	4.5.1.1	 	l1events	1555932	Number of level 1 events
date	2012-08-11T08:32:13	Date and time of file creation			
revision	4	Processing version of data			

2.1.3 Events

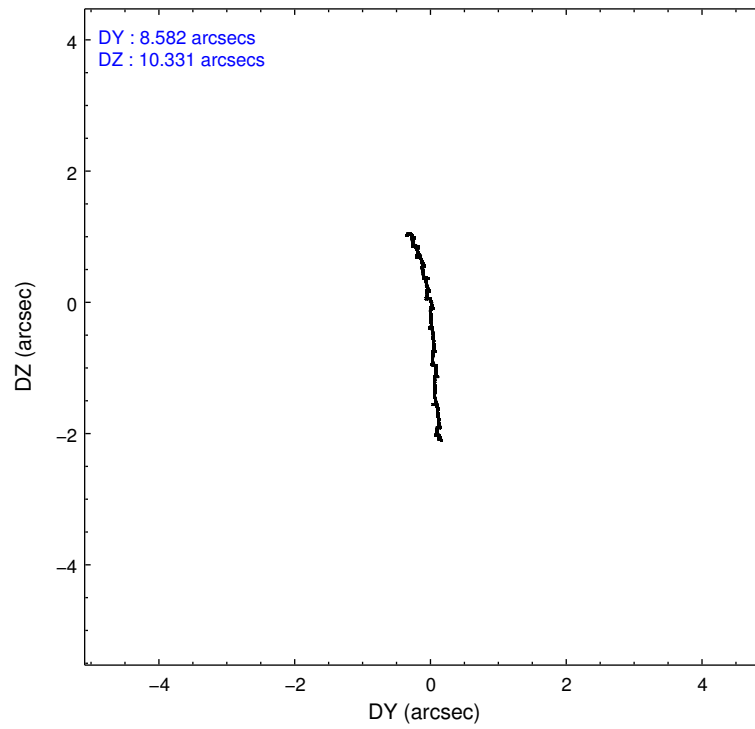
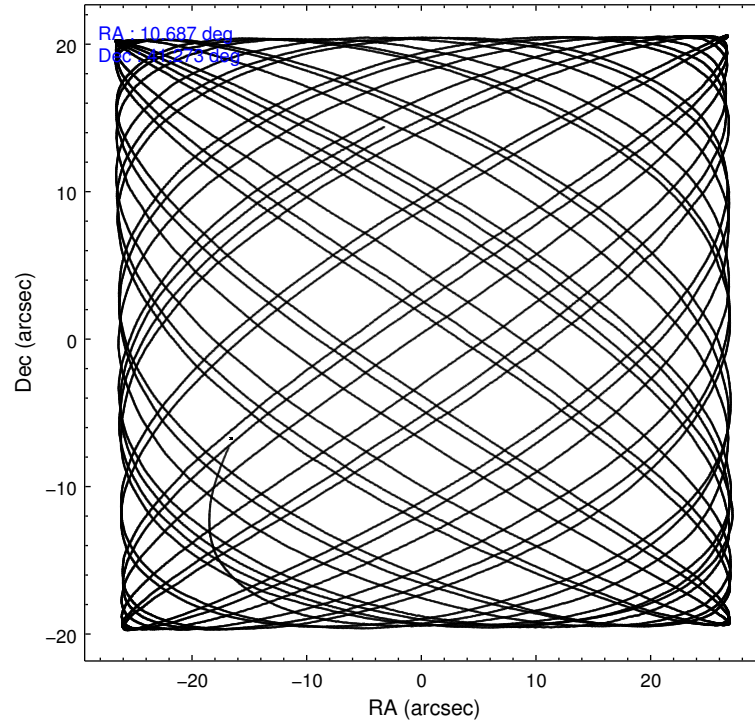
Level 1 Events

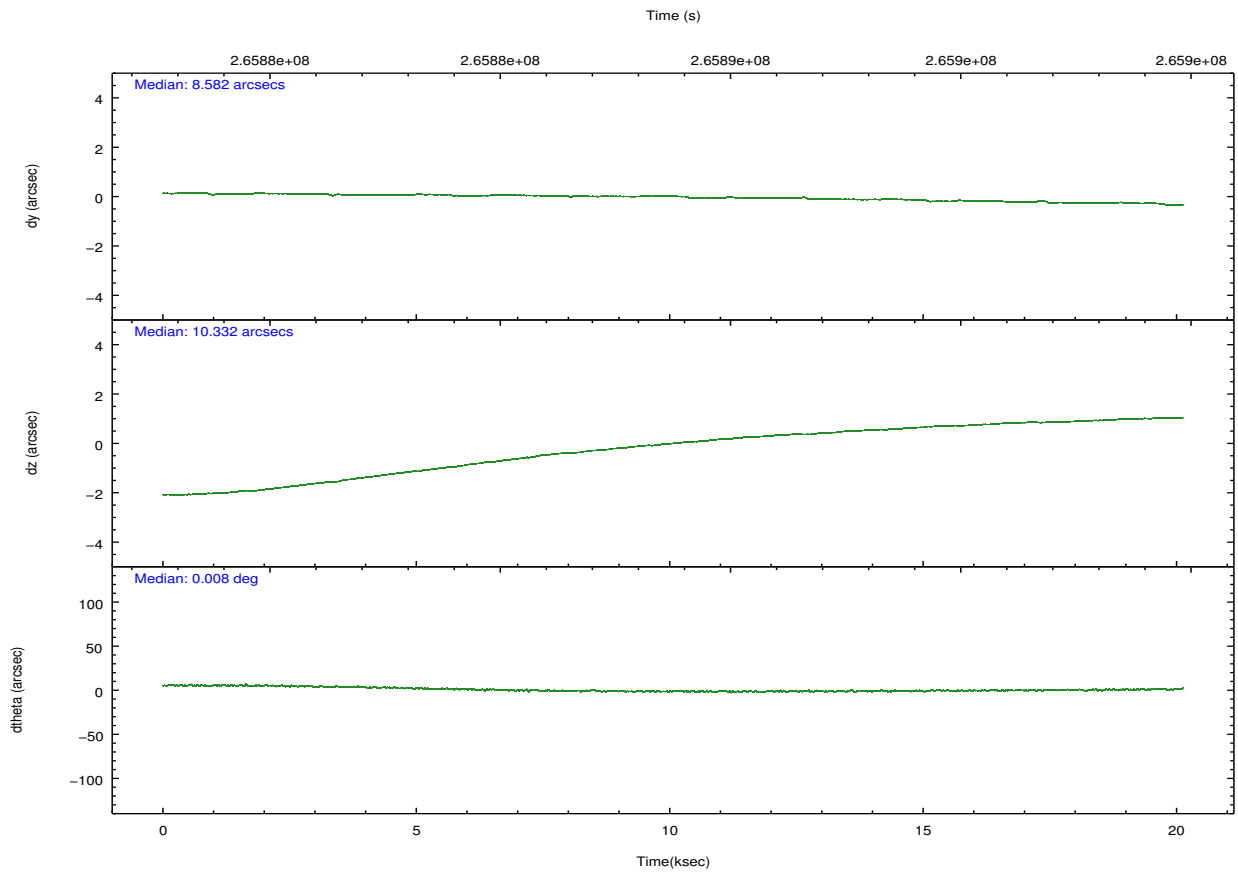
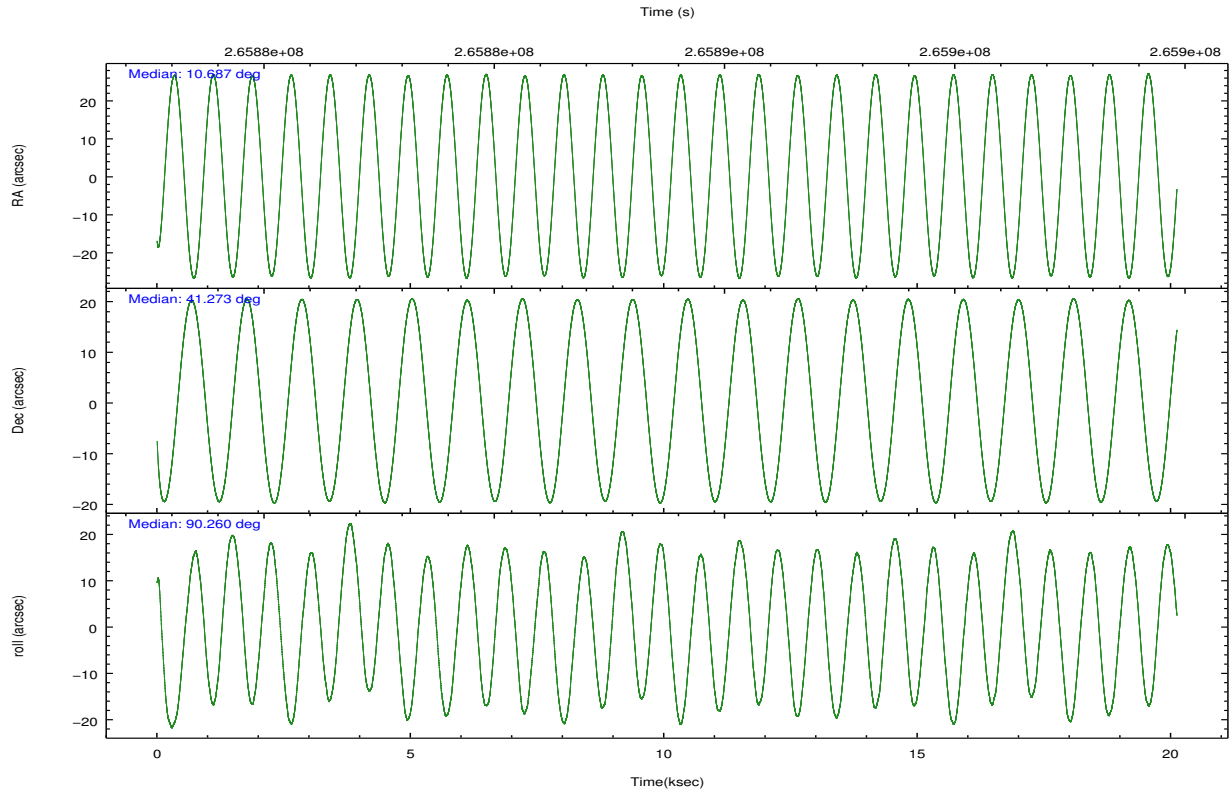
	segment 0
level 1 events	1555932
rejected events	80955
rejected %	5%

2.2 Compared Parameters

Parameter	Planned	Actual	Parameter	Planned	Actual
Instrument	HRC	HRC	Obspar format version number	7	7
Detector	HRC-I	HRC-I	Obspar file type	PREDICTED	ACTUAL
Grating	NONE	NONE	Obspar update status	NONE	UPDATED
Data mode	OBSERVING	OBSERVING			
Observation mode	POINTING	POINTING			
[deg] Pointing RA	10.705583	10.68668363903862			
[deg] Pointing Dec	41.250043	41.27307255636883			
[deg] Pointing Roll	90.345777	90.26274999306875			
[s] Window start time (MET)	264902465.184000	264902465.184000			
[s] Window stop time (MET)	266457664.184000	266457664.184000			
[mm] SIM focus pos	-1.040293	-1.038866356238299			
[mm] SIM defocus	0	0.001426264420575141			
[mm] SIM translation stage pos	126.985494	126.9829799899862			
[mm] SIM translation stage offset	0	0.002508901615314585			
[s] Observation start time (MET)	265878815.184000	265877620.36513			
Observation start date	2006-06-05T07:12:30	2006-06-05T06:53:40			
[s] Observation end time (MET)	265898815.184000	265899710.65366			
Observation end date	2006-06-05T12:45:50	2006-06-05T13:01:50			

2.3 Aspect



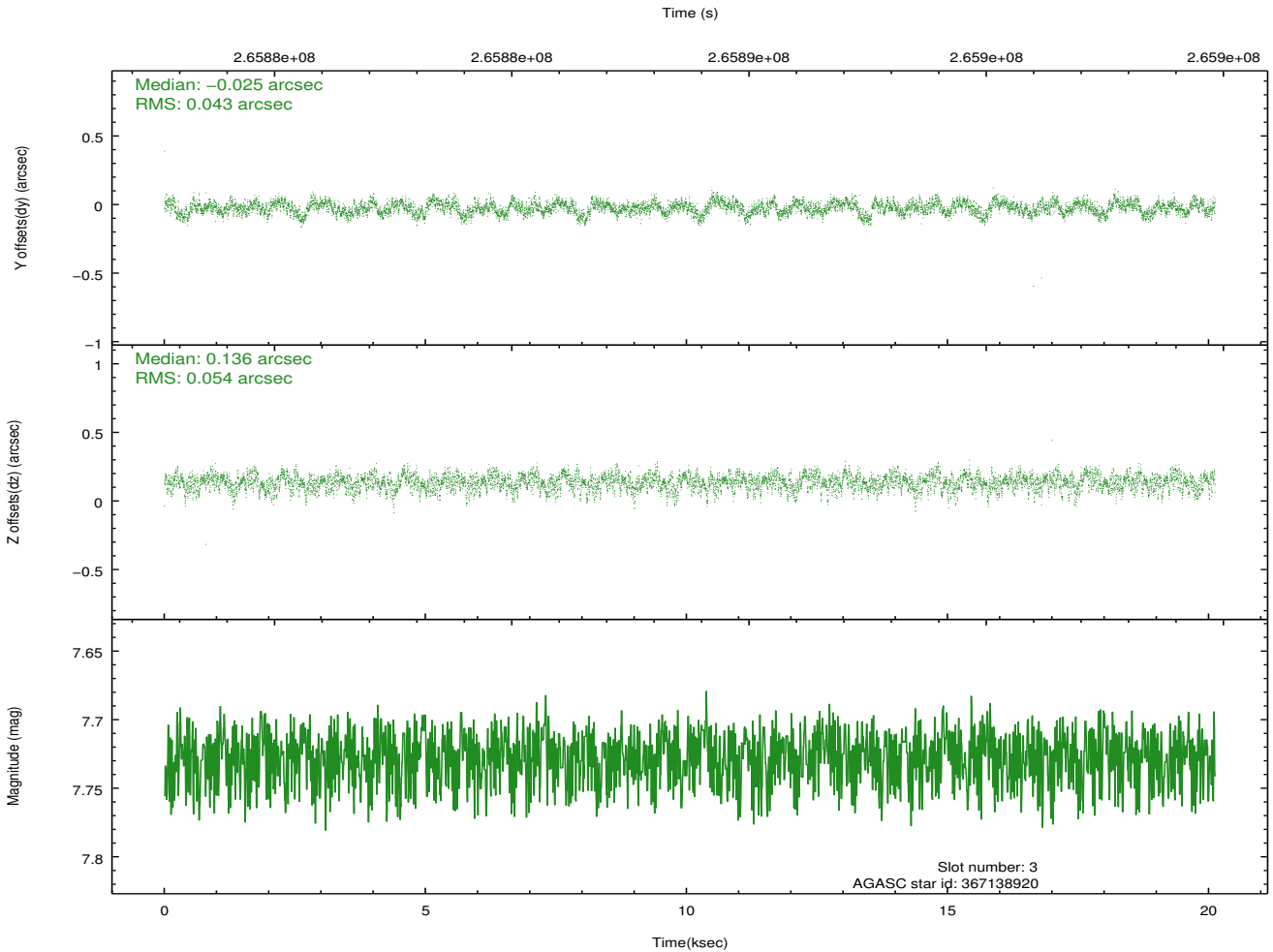
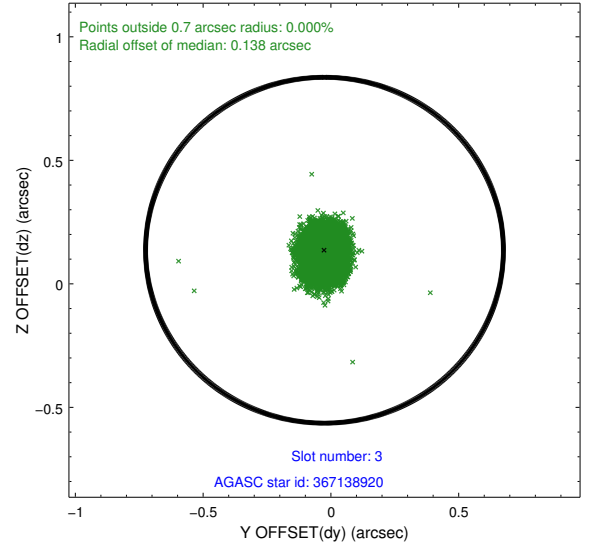
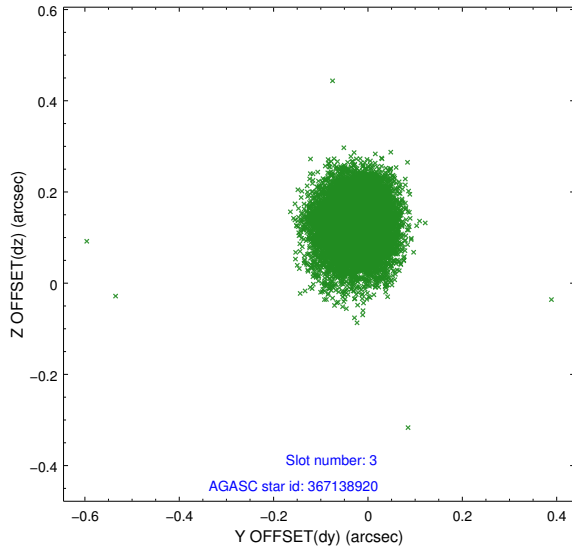


Slot Statistics

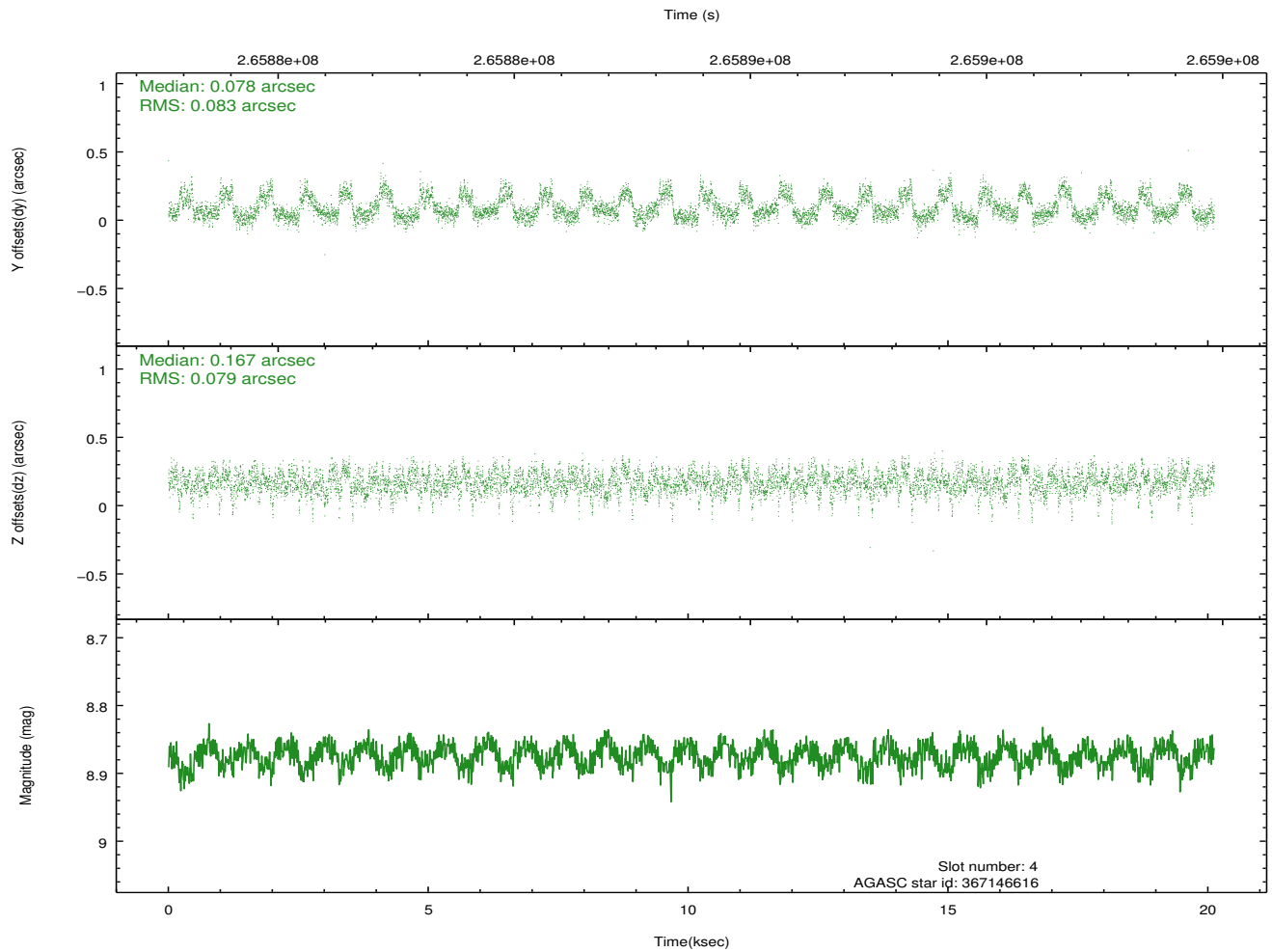
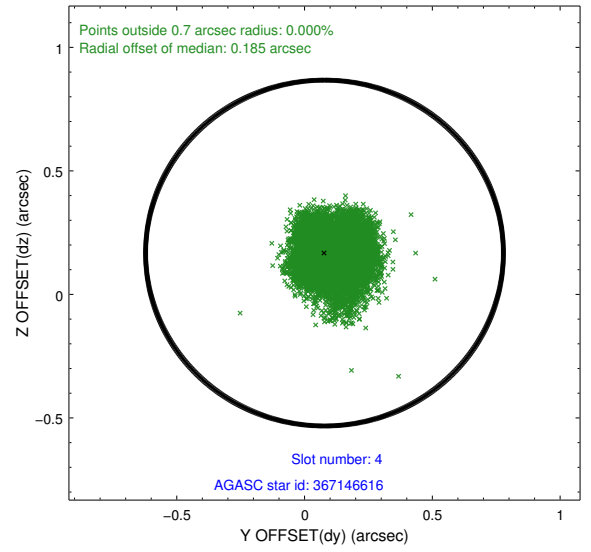
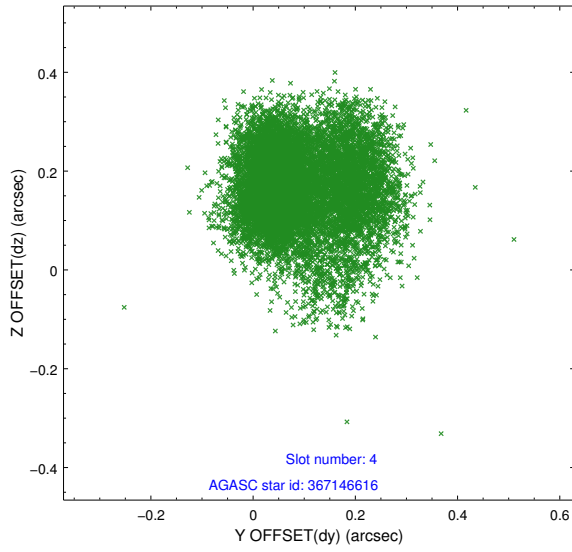
slot	status	id	mag	n_pts	med_dy	med_dz	dr1	dr2	ra	dec	mean_y	mean_z
0	FID	HRC-I-1	6.99	4908	-0.031	0.014	0.023	0.039	0.000000	0.000000	-764.18	-1298.01
1	FID	HRC-I-2	7.03	4908	0.156	-0.088	0.017	0.059	0.000000	0.000000	848.49	-1299.95
2	FID	HRC-I-3	7.09	4907	-0.003	-0.013	0.018	0.046	0.000000	0.000000	-1192.49	1006.26
3	GUIDE	367138920	7.73	9810	-0.025	0.136	0.073	0.118	11.513485	40.808909	-1590.92	-2192.20
4	GUIDE	367146616	8.87	9810	0.078	0.167	0.121	0.199	11.418645	41.190163	-218.70	-1930.37
5	GUIDE	367148872	7.21	9816	0.058	-0.214	0.078	0.125	10.505940	40.688258	-2018.29	556.94
6	GUIDE	367663272	9.29	9788	-0.020	-0.189	0.094	0.153	10.656279	41.699429	1618.68	123.35
7	GUIDE	367674552	8.85	9782	-0.110	0.103	0.073	0.118	11.016238	41.570845	1151.92	-843.44

2.4 Star Slots

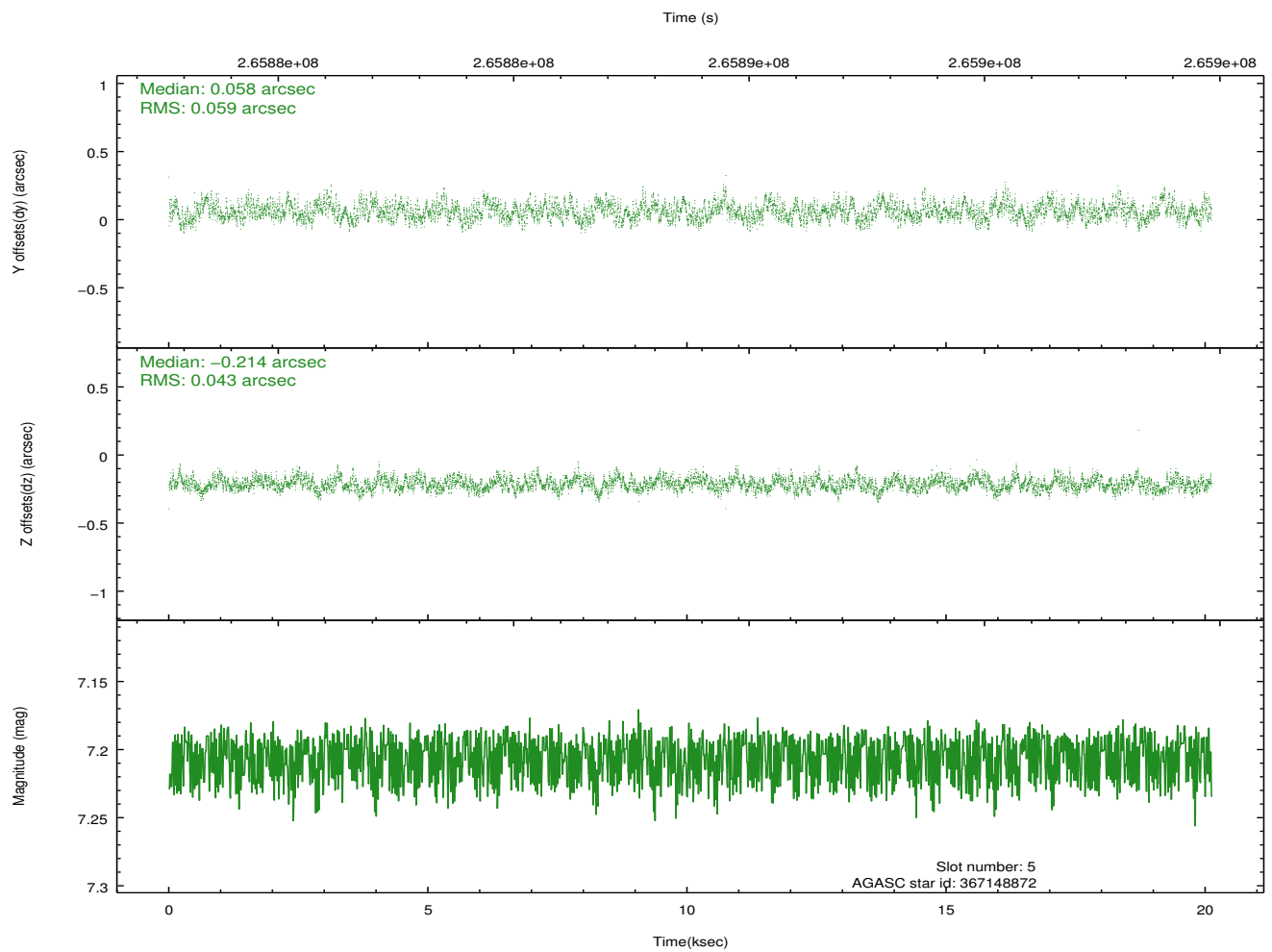
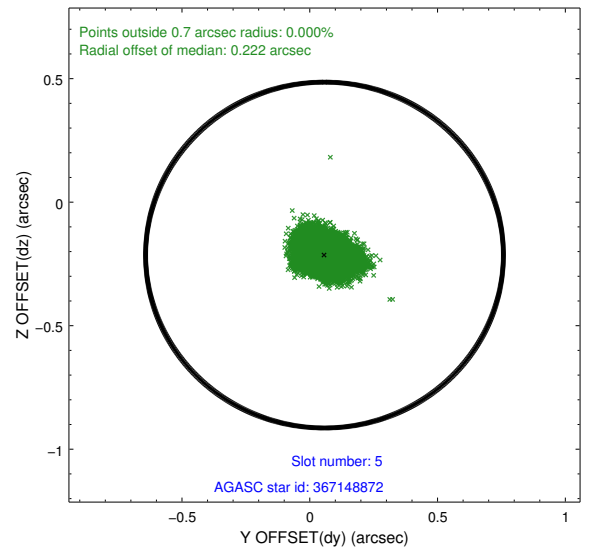
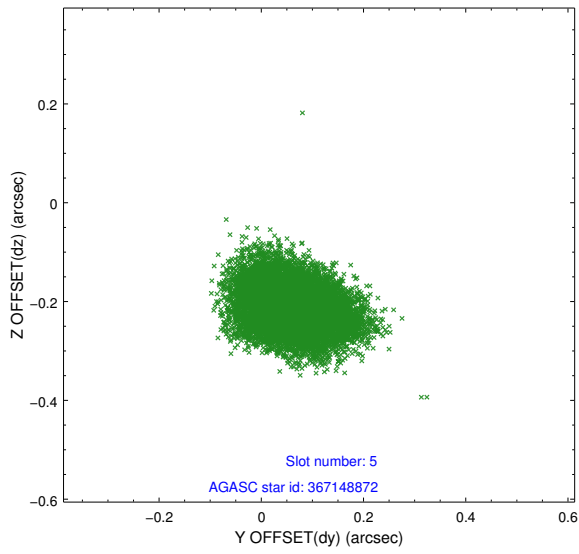
2.4.1 Slot 3



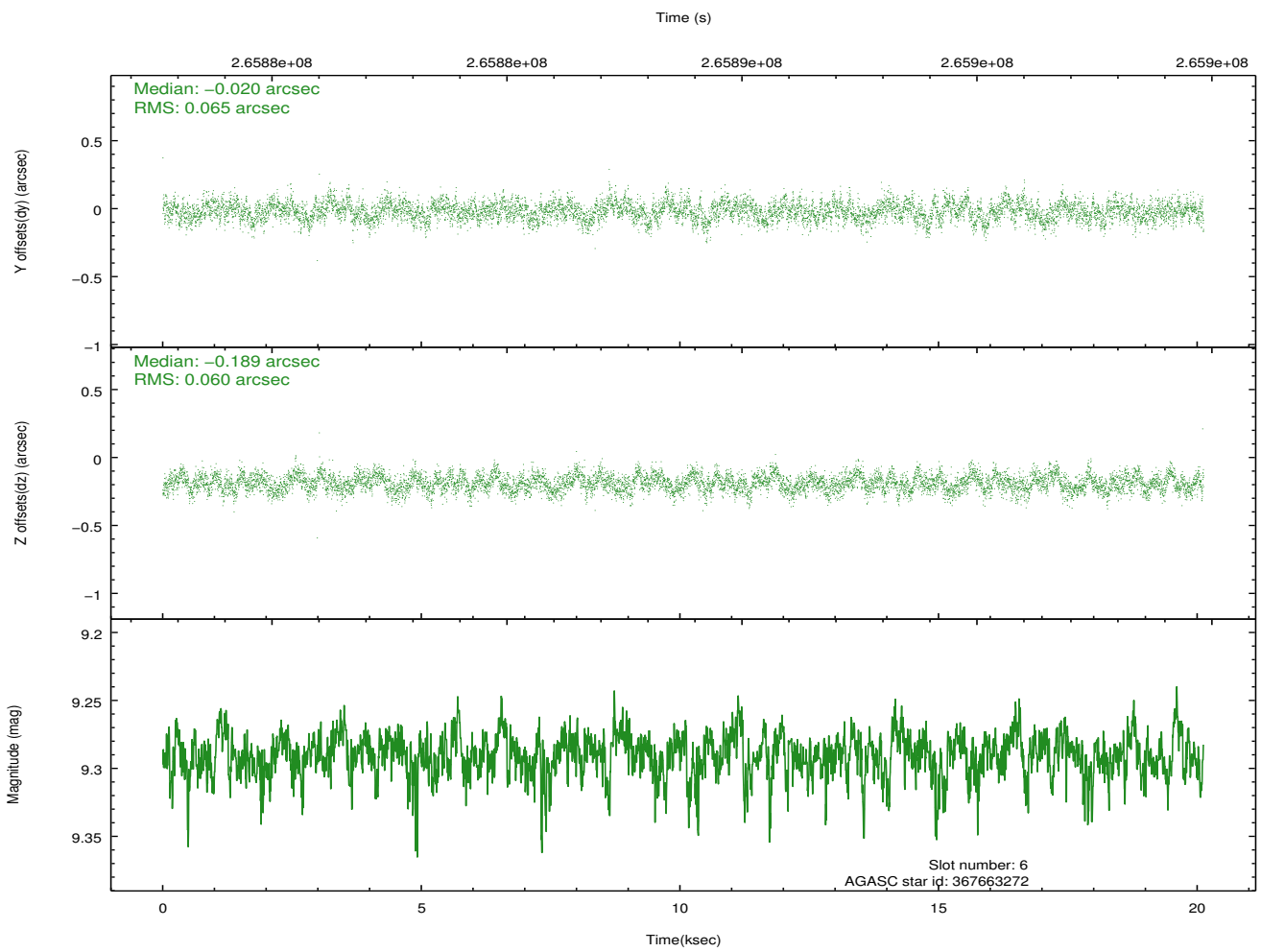
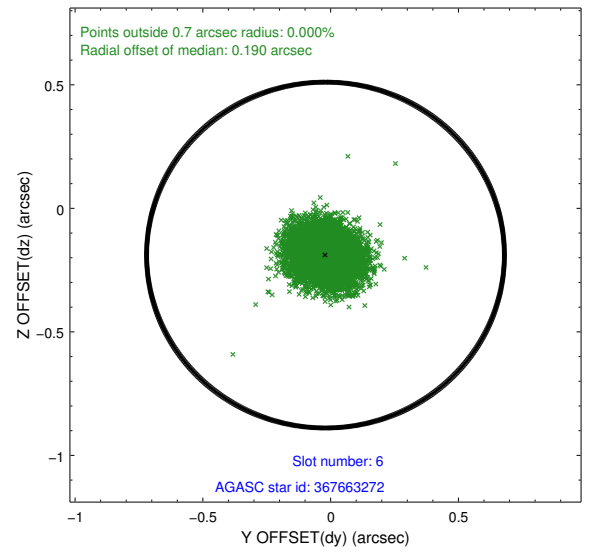
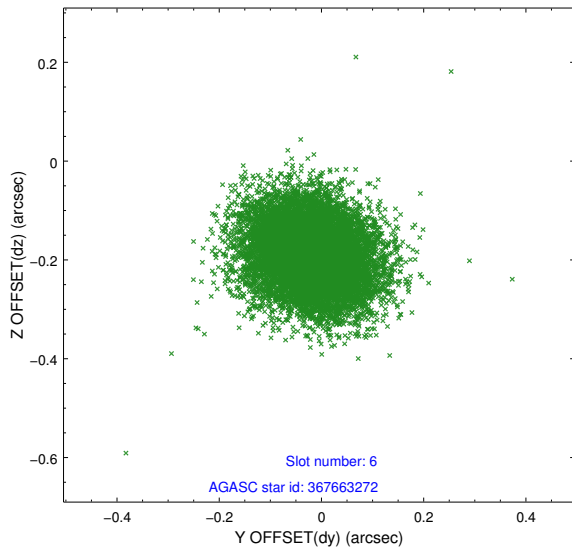
2.4.2 Slot 4



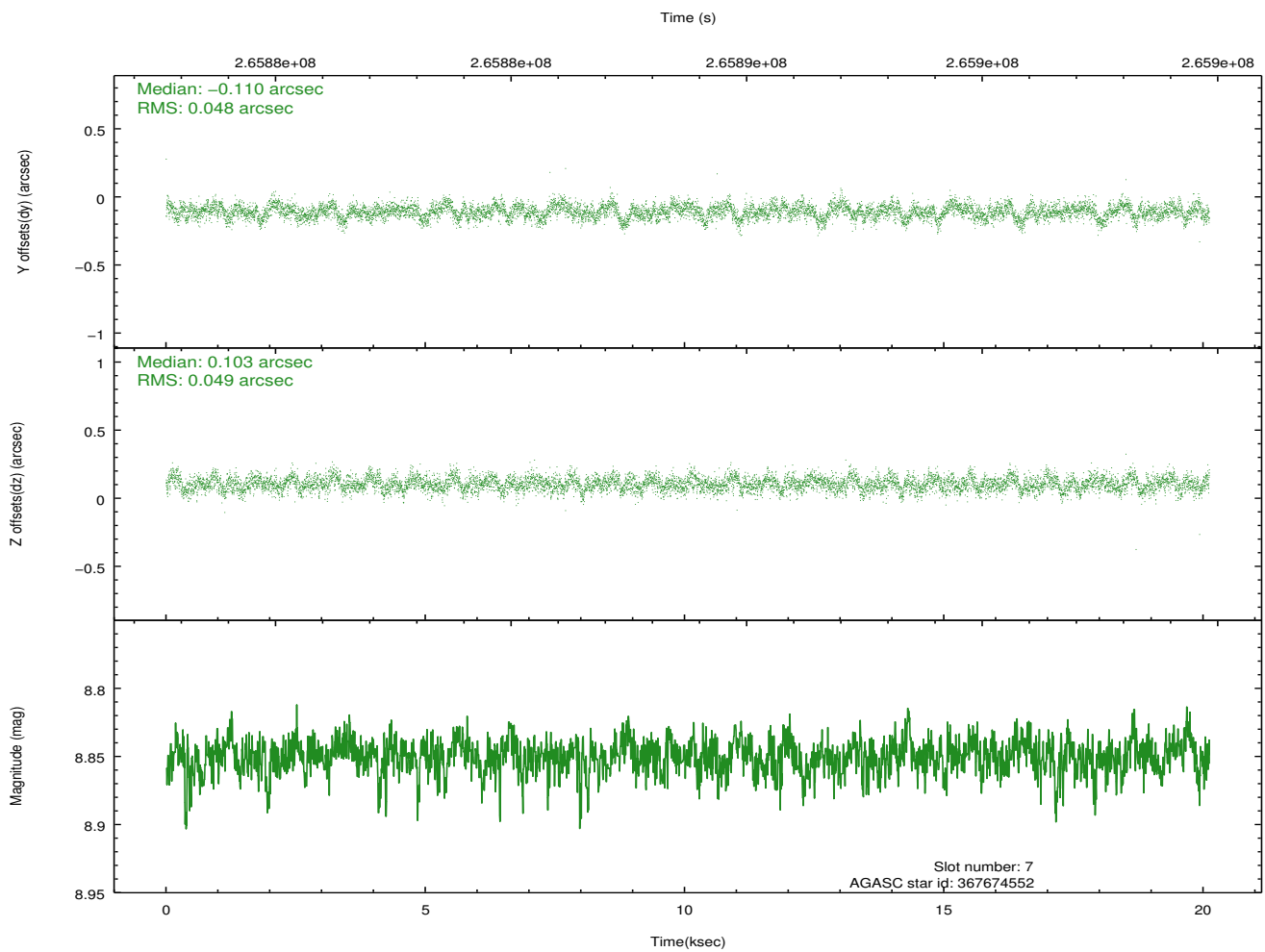
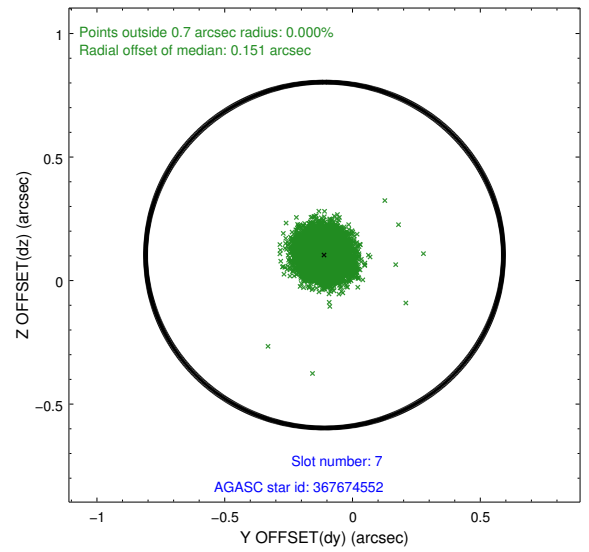
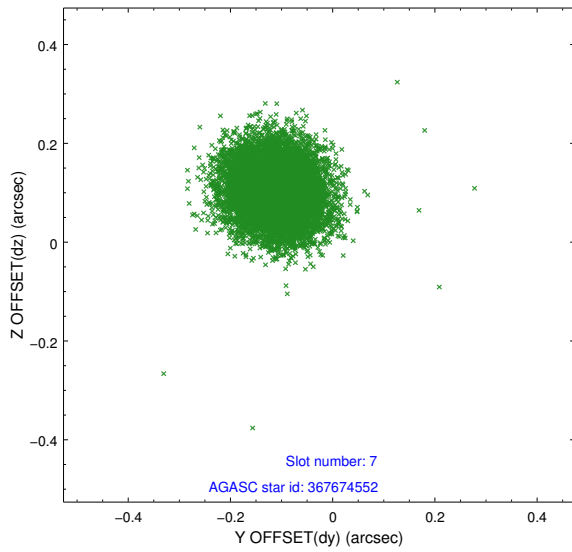
2.4.3 Slot 5



2.4.4 Slot 6

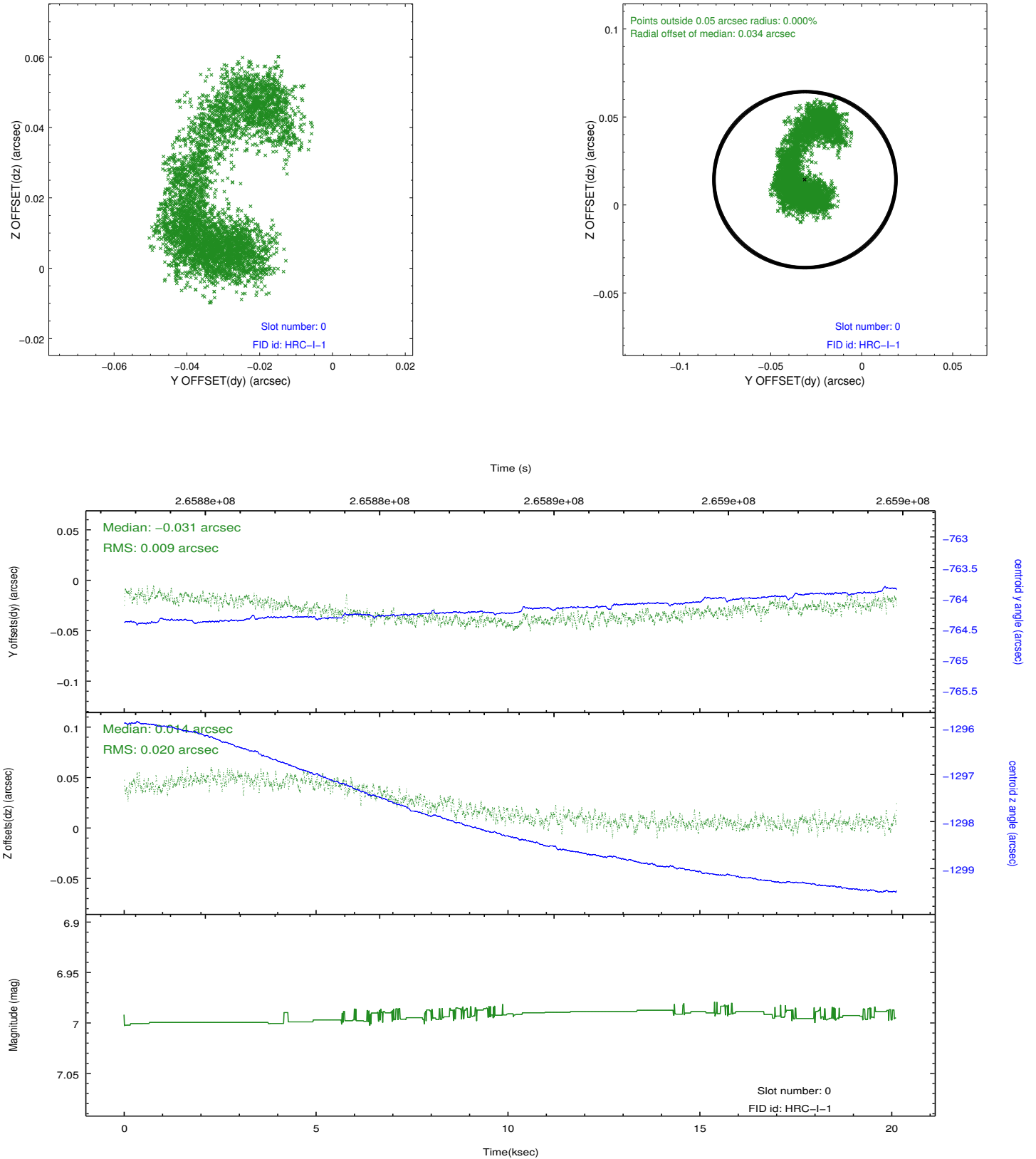


2.4.5 Slot 7

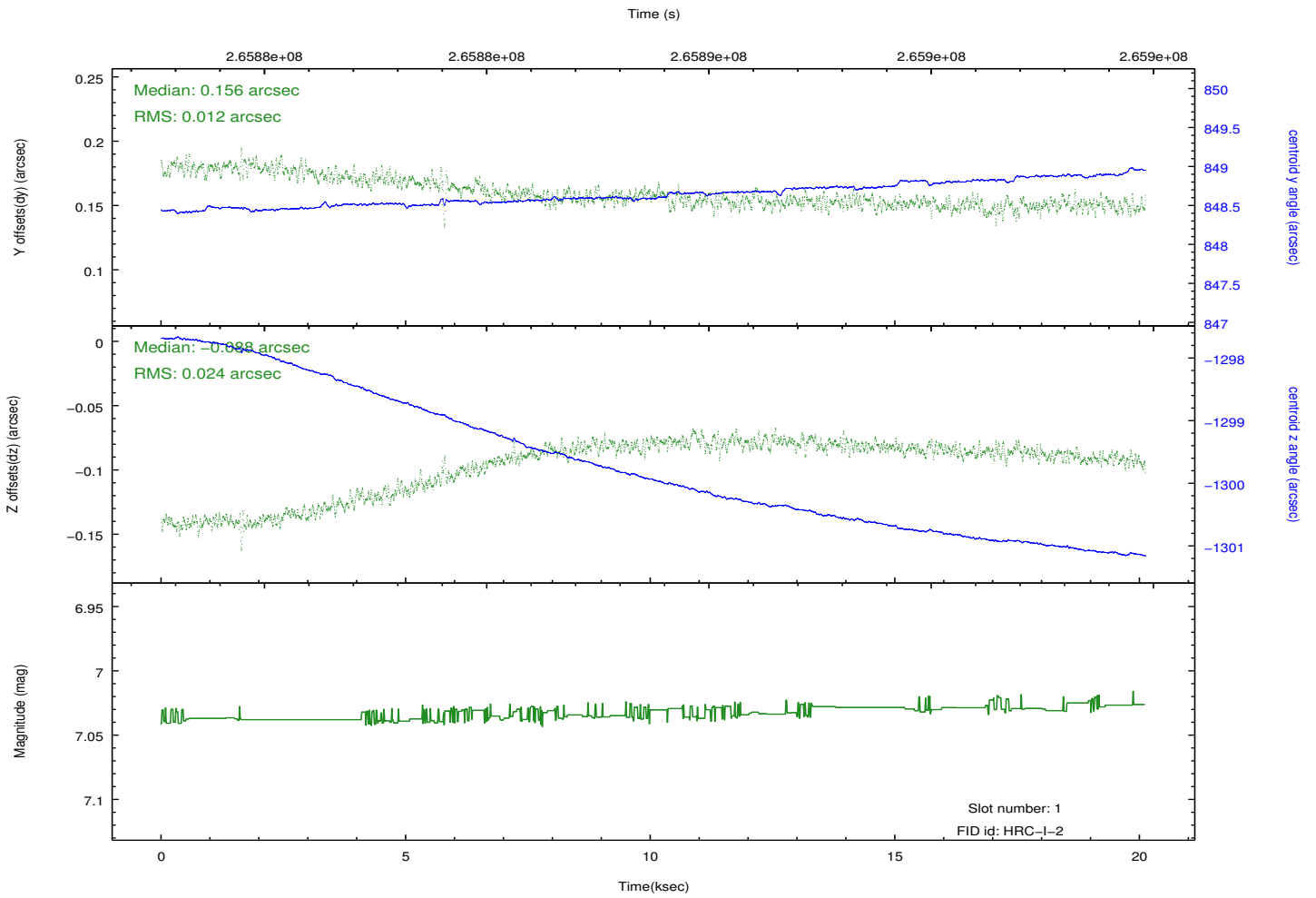
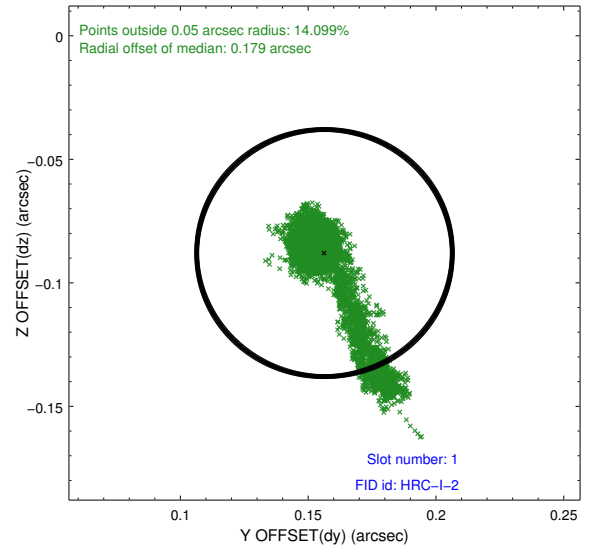
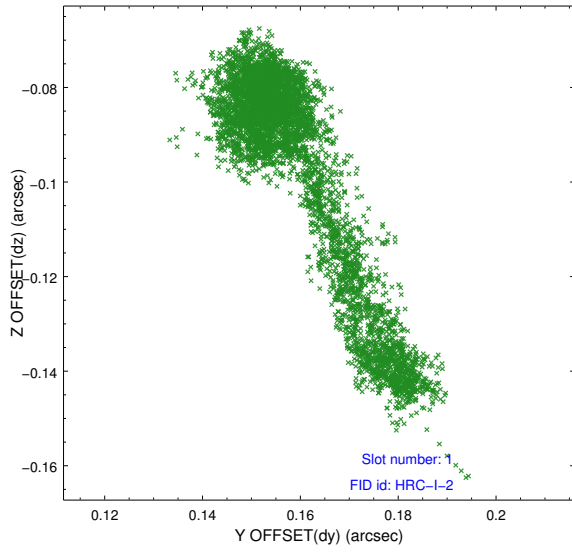


2.5 FID Slots

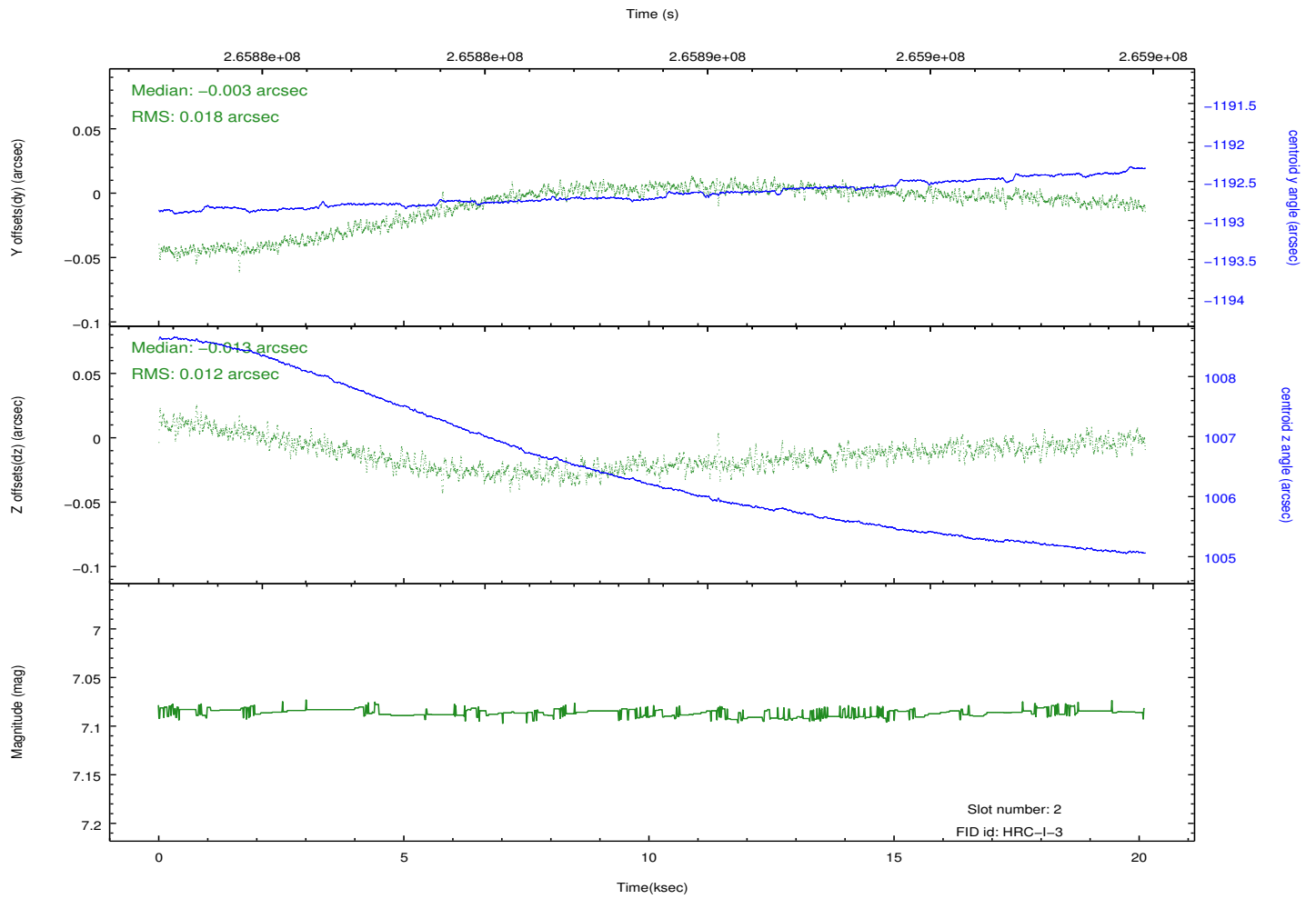
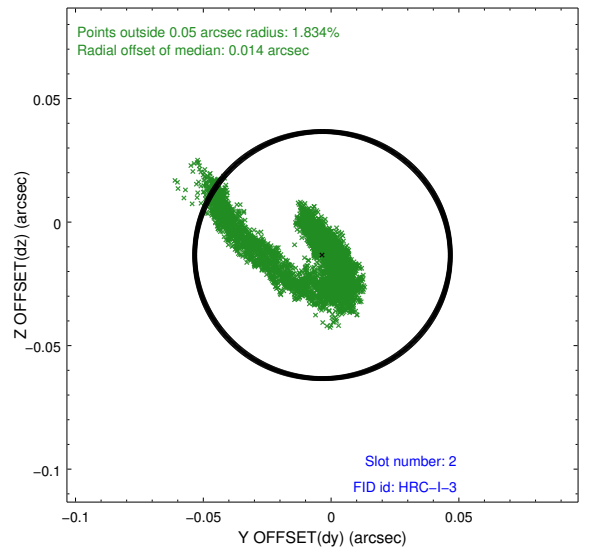
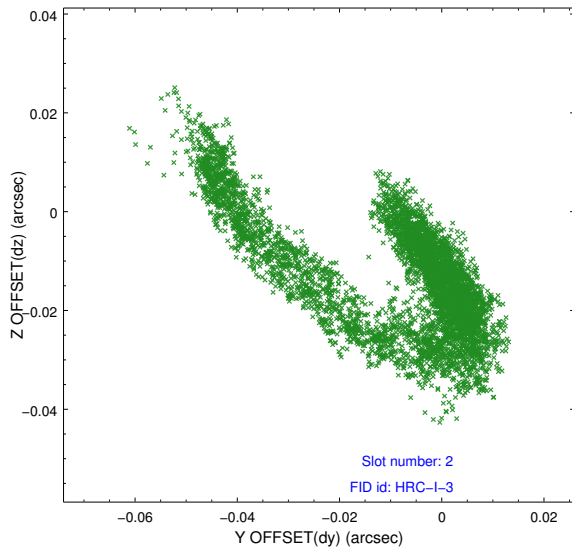
2.5.1 Slot 0



2.5.2 Slot 1



2.5.3 Slot 2



A Summary

A.1 Status

V&V Scientist	Beth Sundheim
V&V Date (YYYY-MM-DD)	2012.08.13
V&V Edition	1
V&V Disposition and Status	OK
V&V Charge Time	20.1197259

A.2 Comments

Joint proposal with XMM.

Window preference met.