

# V&V Reference Report

## L2 ASCDS Version : 8.4.3.1

Observation 7303 - L2 Version 2  
Chandra X-Ray Center

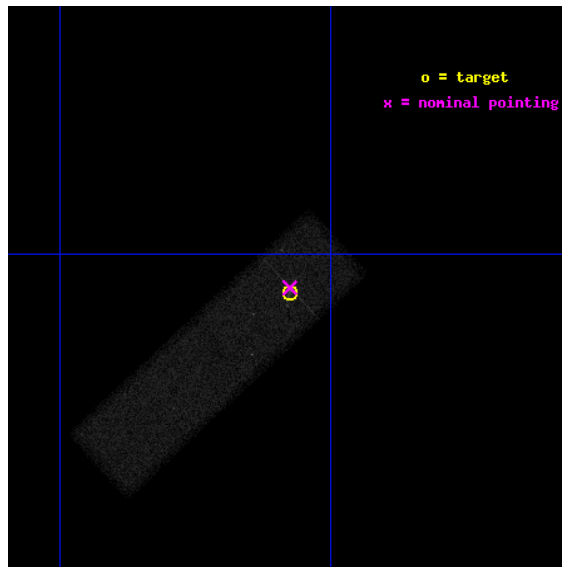
L2 Processing Date : Mar 28 2012

## Contents

<b>1</b>	<b>Front</b>	<b>2</b>
<b>2</b>	<b>OBI</b>	<b>3</b>
2.1	OBI . . . . .	3
2.1.1	Images . . . . .	3
2.1.2	Bias . . . . .	3
2.1.3	Parameters . . . . .	4
2.1.4	Events . . . . .	4
2.2	Compared Parameters . . . . .	5
2.3	Aspect . . . . .	6
2.4	Star Slots . . . . .	9
2.4.1	Slot 3 . . . . .	9
2.4.2	Slot 4 . . . . .	10
2.4.3	Slot 5 . . . . .	11
2.4.4	Slot 6 . . . . .	12
2.4.5	Slot 7 . . . . .	13
2.5	FID Slots . . . . .	14
2.5.1	Slot 0 . . . . .	14
2.5.2	Slot 1 . . . . .	15
2.5.3	Slot 2 . . . . .	16
<b>A</b>	<b>Summary</b>	<b>17</b>
A.1	Status . . . . .	17
A.2	Comments . . . . .	17

# 1 Front

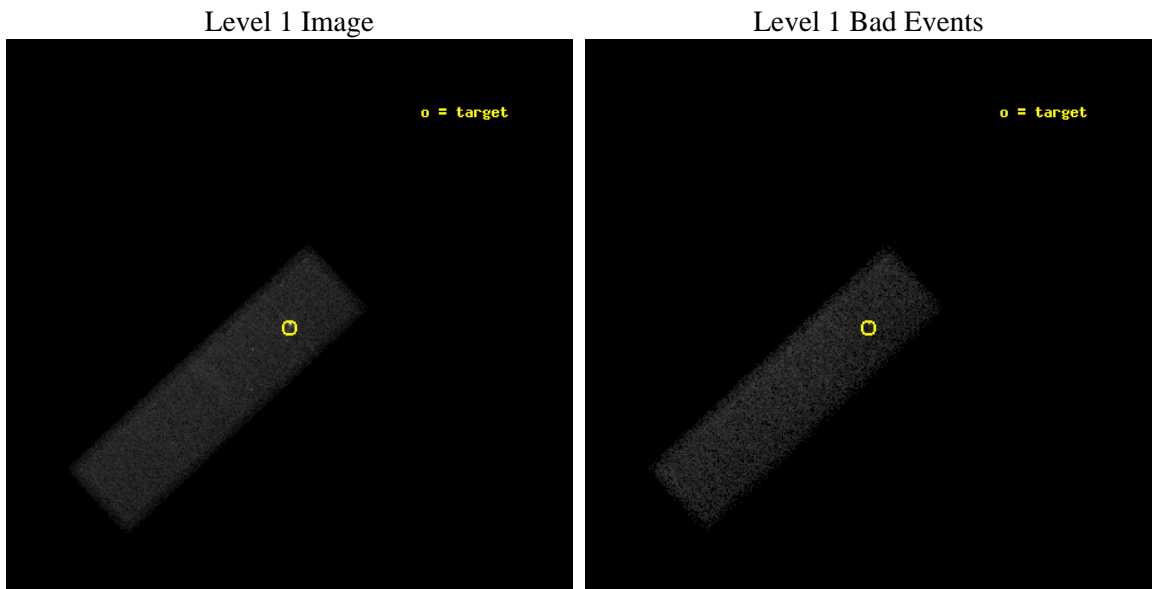
seq_num	701320	Sequence number
obs_id	7303	Observation id
title	The Long X-ray Jet of Quasar 4C19.44	Proposal title
observer	Dr. Daniel Harris	Principal investigator
object	4C19.44	Source name
dtcycle	0	&#160
cycle	P	events from which exps? Prim/Second/Both
ra_targ	209.26875	Observer's specified target RA [deg]
dec_targ	19.316944	Observer's specified target Dec [deg]
ra_nom	209.26896464058	Nominal RA [deg]
dec_nom	19.319020644446	Nominal Dec [deg]
roll_nom	137.15655013696	Nominal Roll [deg]
revision	2	Processing version of data
ontime	43652.800650477	Sum of GTIs [s]
liveltime	41522.686816777	Livetime [s]
ontime7	43652.800650477	Sum of GTIs [s]
l2events	86338	Number of level 2 events



## 2 OBI

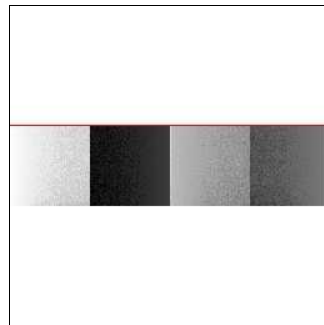
### 2.1 OBI

#### 2.1.1 Images



#### 2.1.2 Bias

Chip 7



### 2.1.3 Parameters

obi_num	1	Obi number	sched_exp_time	43500.000000	[s] Scheduled observation exposure time
ascdsver	8.4.3.1	Processing system revision	ontime	43652.800650477	Sum of GTIs [s]
caldbver	4.4.8	&#160	ontime7	43652.800650477	Sum of GTIs [s]
date	2012-03-29T01:01:49	Date and time of file creation	l1events	167879	Number of level 1 events
revision	2	Processing version of data			

### 2.1.4 Events

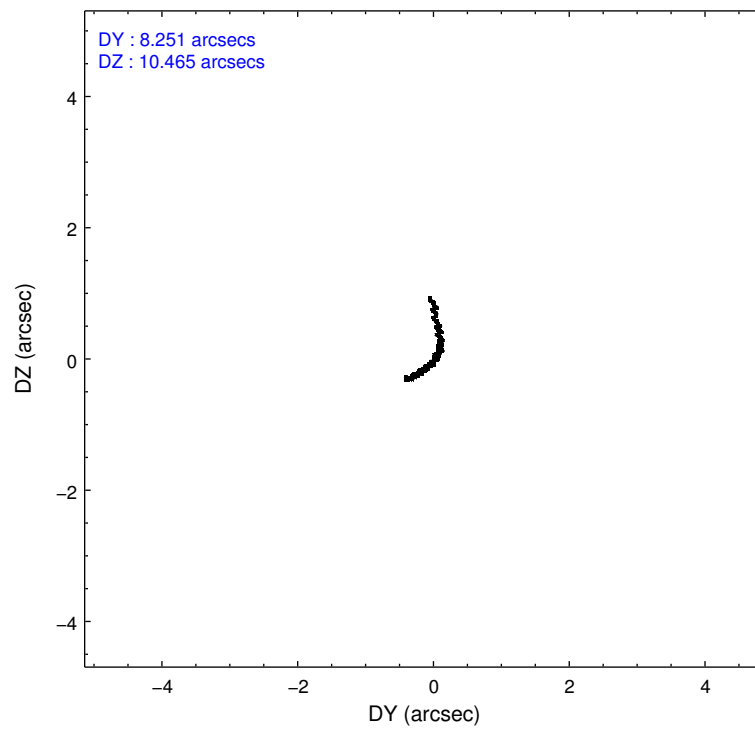
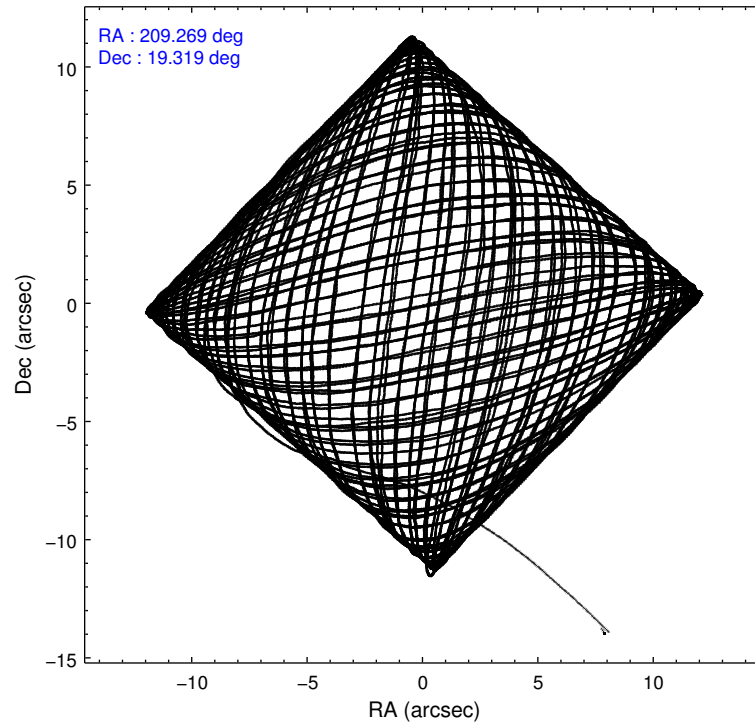
	<b>ccd 7</b>
level 1 events	167879
rejected events	79555
rejected %	47%

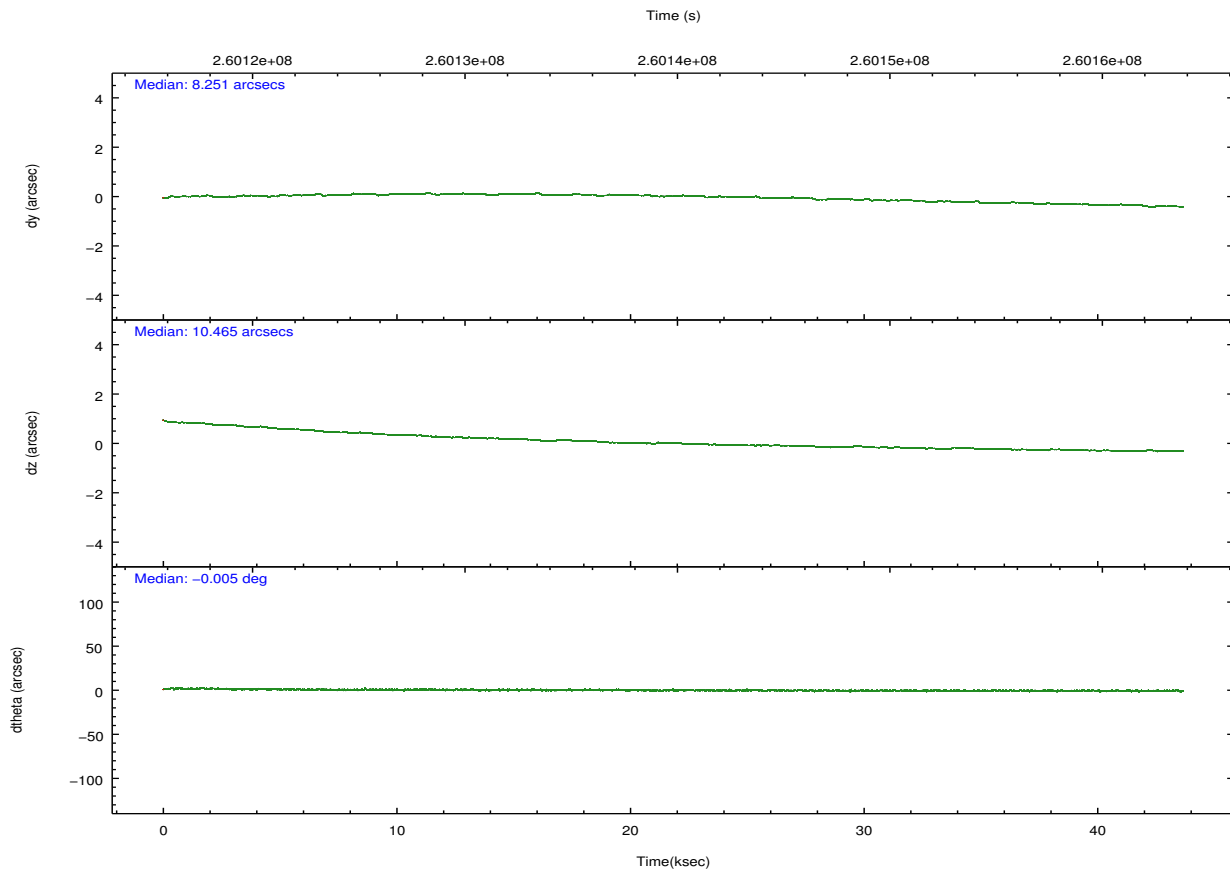
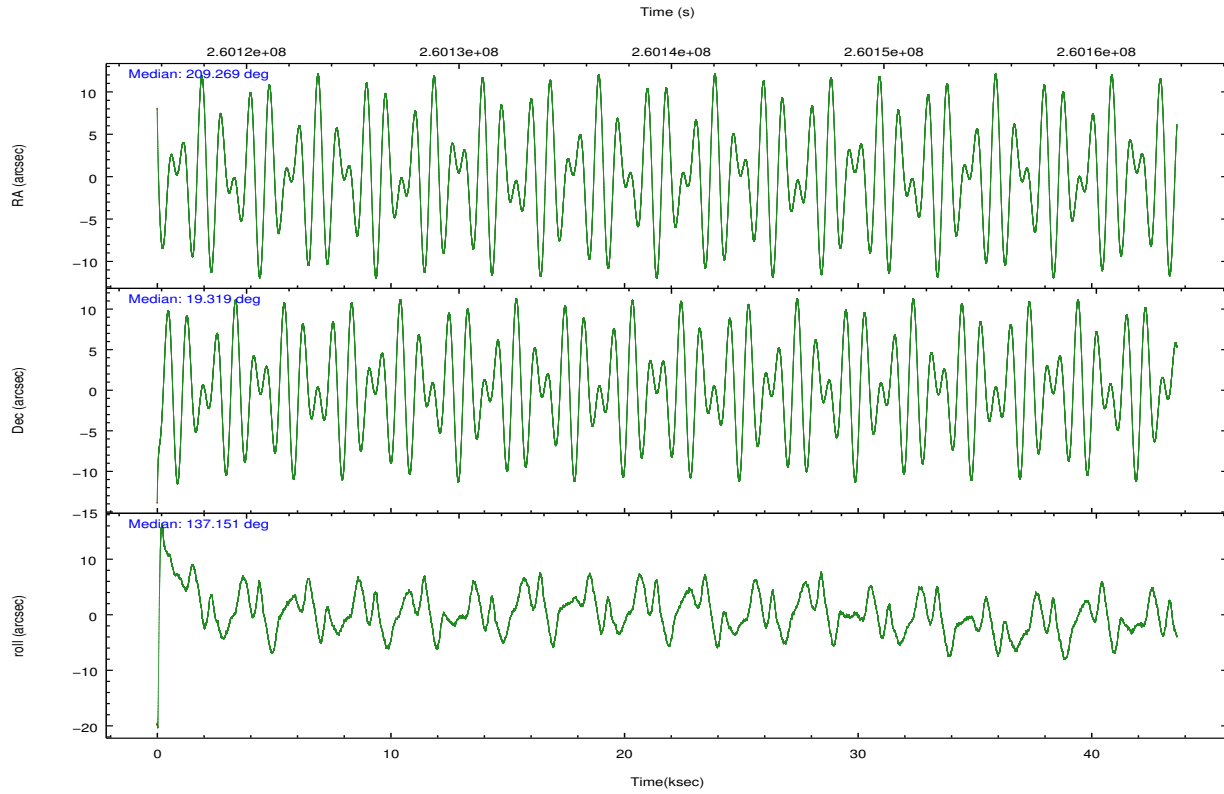
	<b>ccd 7</b>
grade 0 events	12758
	7%
grade 1 events	434
	0%
grade 2 events	19524
	11%
grade 3 events	9918
	5%
grade 4 events	9700
	5%
grade 5 events	14555
	8%
grade 6 events	37508
	22%
grade 7 events	63482
	37%

## 2.2 Compared Parameters

Parameter	Planned	Actual	Parameter	Planned	Actual
Instrument	ACIS	ACIS	Obspar format version number	7	7
Detector	ACIS-7	ACIS-7	Obspar file type	PREDICTED	ACTUAL
Grating	NONE	NONE	Obspar update status	NONE	UPDATED
Data mode	FAINT	FAINT	Number of optional ACIS chips dropped	0	0
Observation mode	POINTING	POINTING	On-chip summing requested	N	N
[deg] Pointing RA	209.297211	209.2689646405838	Subarray requested	CUSTOM	1/4
[deg] Pointing Dec	19.313314	19.31902064444553	Subarray start row	384	385
[deg] Pointing Roll	136.990586	137.1565501369575	Subarray row count	256	256
[mm] SIM focus pos	-0.684267	-0.6828225247311905	Alternating exposures requested	N	N
[mm] SIM defocus	0	0.001444936568705701	[s] Primary exposure time	0.000000	0.8
[mm] SIM translation stage pos	-190.132523	-190.1400660498719			
[mm] SIM translation stage offset	0	0.00754346686406393			
[s] Observation start time (MET)	260118115.184000	260117151.35898			
Observation start date	2006-03-30T15:00:50	2006-03-30T14:45:51			
[s] Observation end time (MET)	260161615.184000	260162497.87359			
Observation end date	2006-03-31T03:05:50	2006-03-31T03:21:37			
Read mode	TIMED	TIMED			

## 2.3 Aspect



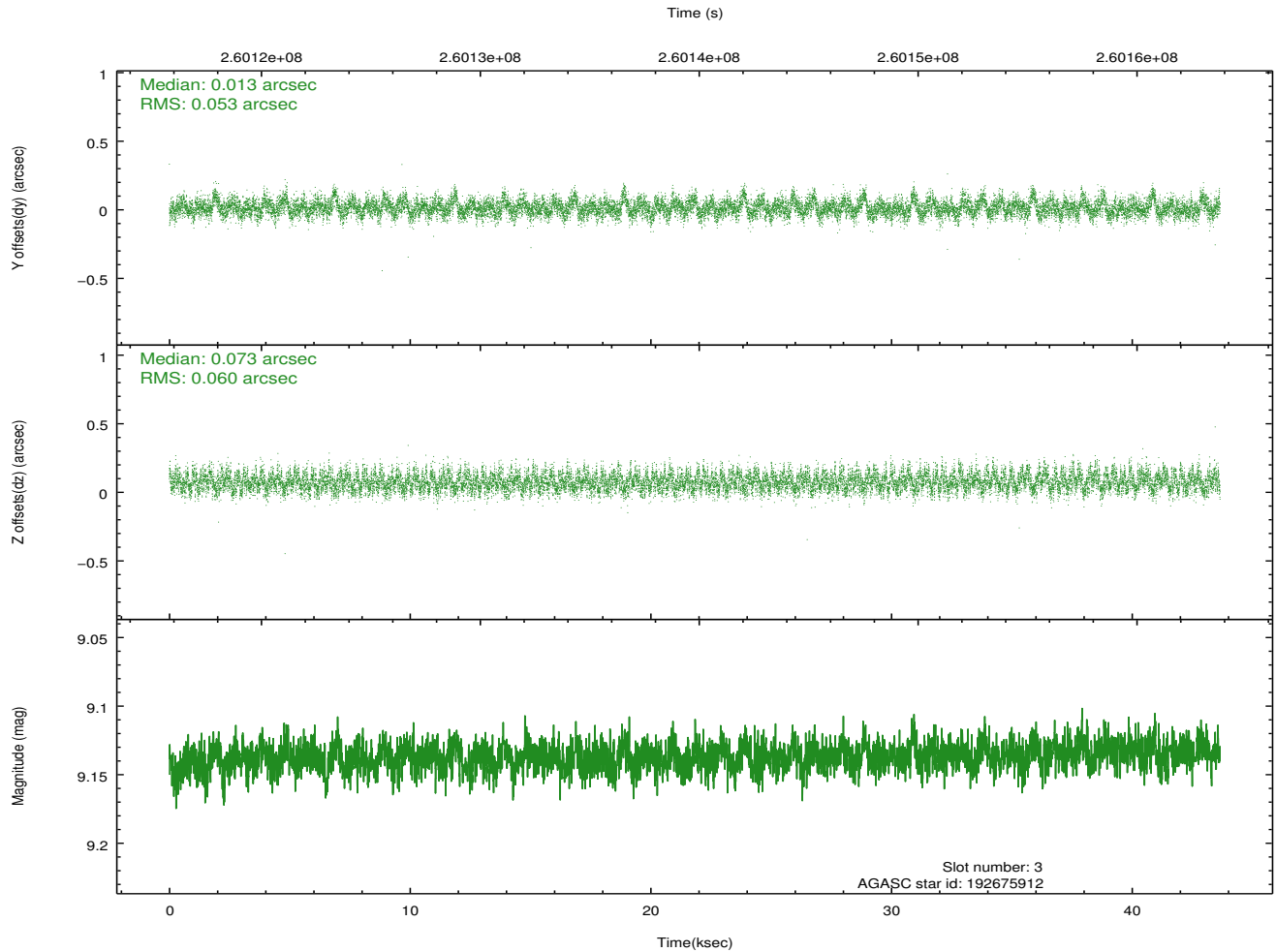
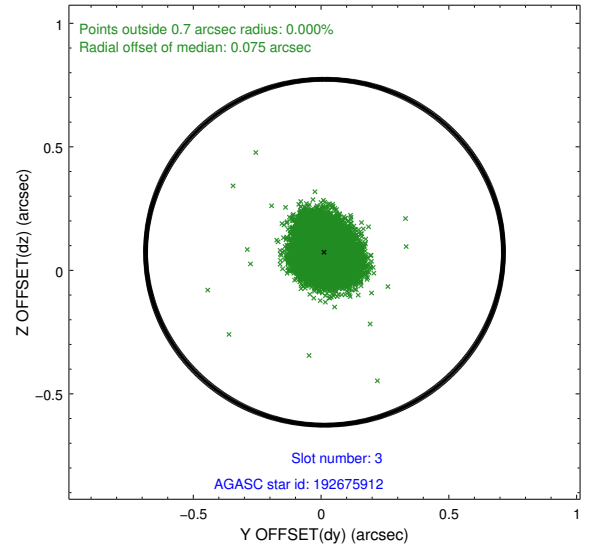
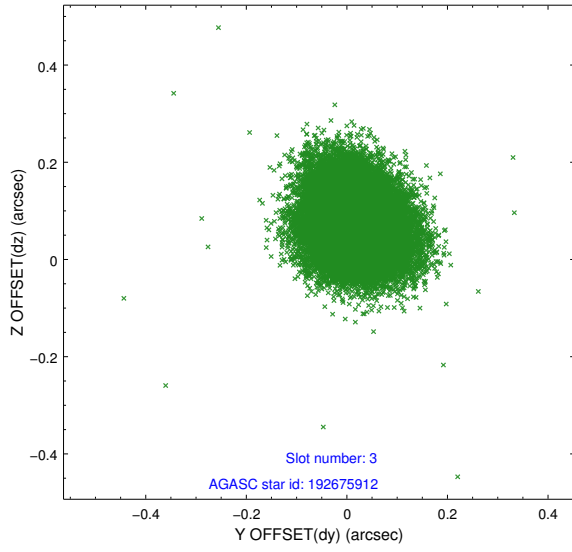


### Slot Statistics

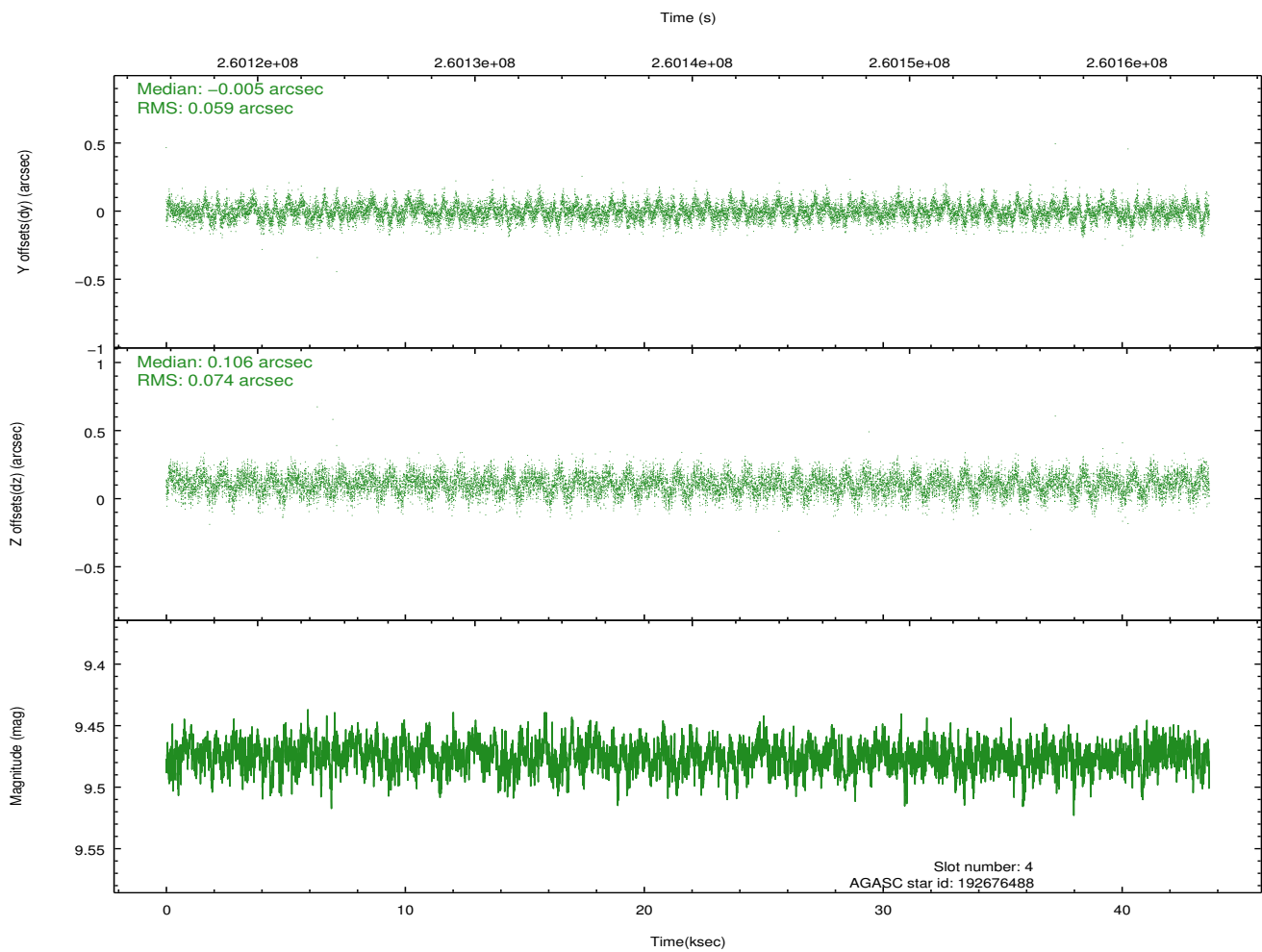
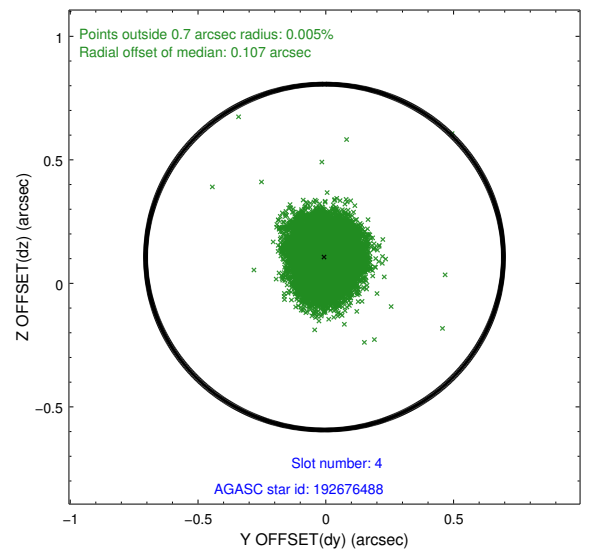
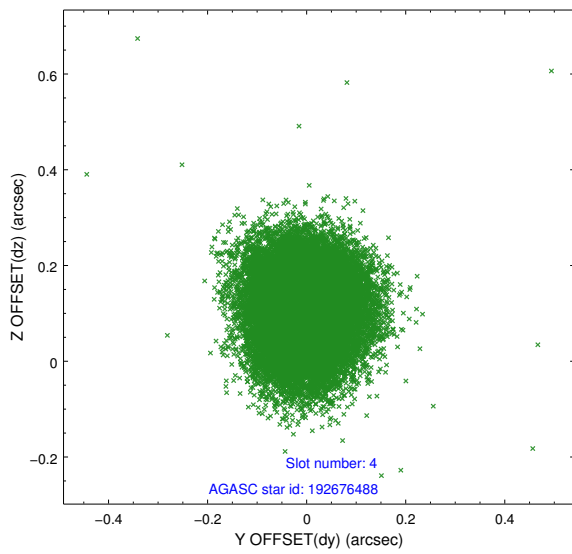
slot	status	id	mag	n_pts	med_dy	med_dz	dr1	dr2	ra	dec	mean_y	mean_z
0	FID	ACIS-S-2	7.11	10648	-0.083	-0.061	0.008	0.017	0.000000	0.000000	-761.03	-1731.88
1	FID	ACIS-S-4	7.21	10647	0.088	0.037	0.009	0.014	0.000000	0.000000	2152.39	176.73
2	FID	ACIS-S-6	7.35	10648	-0.032	0.031	0.008	0.015	0.000000	0.000000	400.97	814.10
3	GUIDE	192675912	9.14	21261	0.013	0.073	0.085	0.135	209.556745	19.286625	-709.24	-530.72
4	GUIDE	192676488	9.48	21281	-0.005	0.106	0.101	0.162	209.700751	19.421069	-735.95	-1219.02
5	GUIDE	192677632	9.20	21281	0.075	-0.021	0.088	0.146	209.730671	18.841125	-2237.93	234.63
6	GUIDE	192678056	9.47	21279	-0.059	-0.043	0.125	0.213	209.629569	19.594794	-132.33	-1510.35
7	GUIDE	192680448	8.09	21286	-0.030	-0.104	0.064	0.103	209.583470	18.944304	-1618.28	305.98

## 2.4 Star Slots

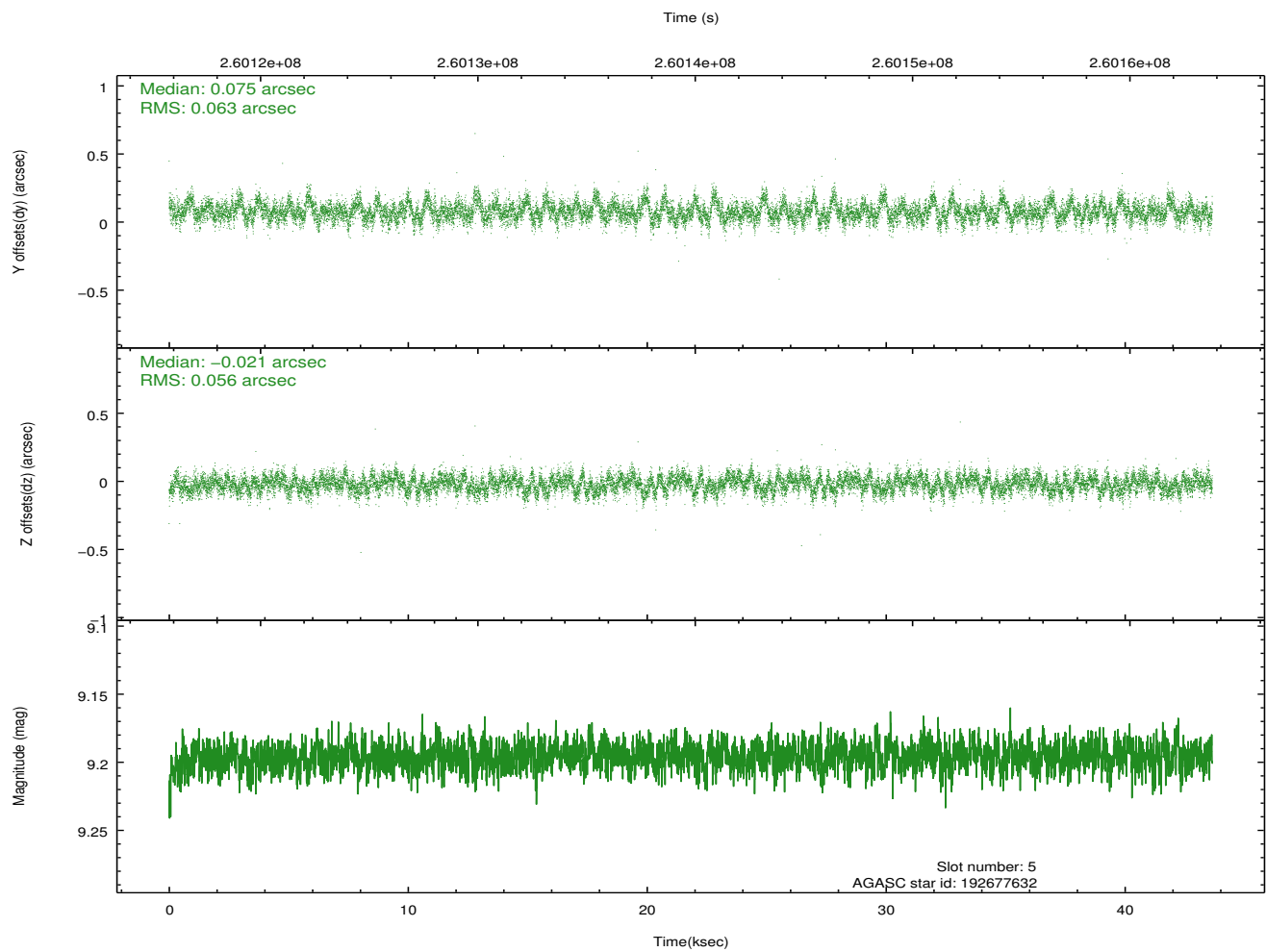
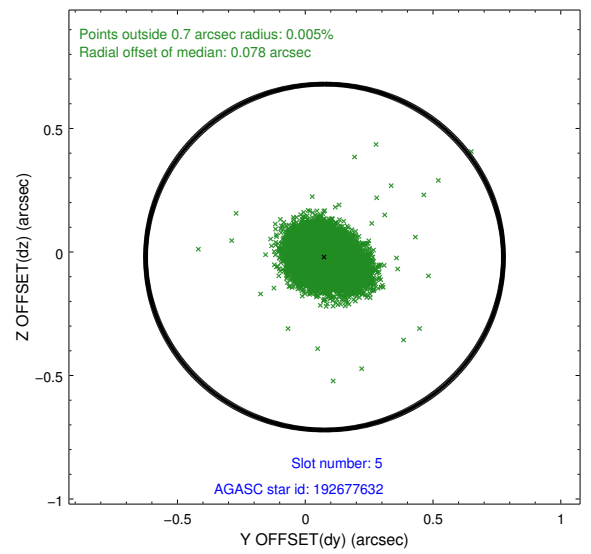
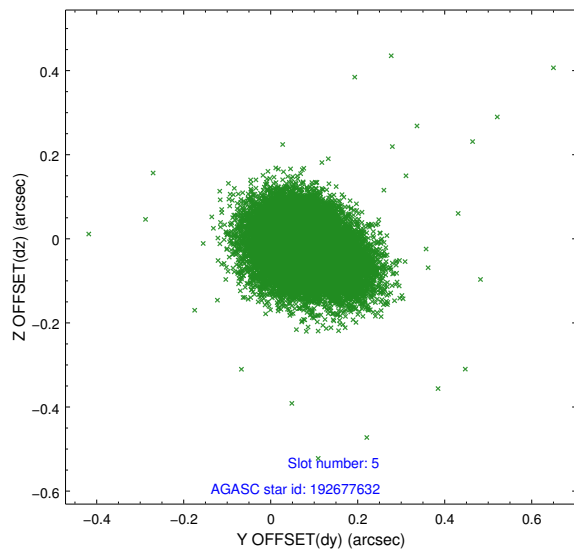
### 2.4.1 Slot 3



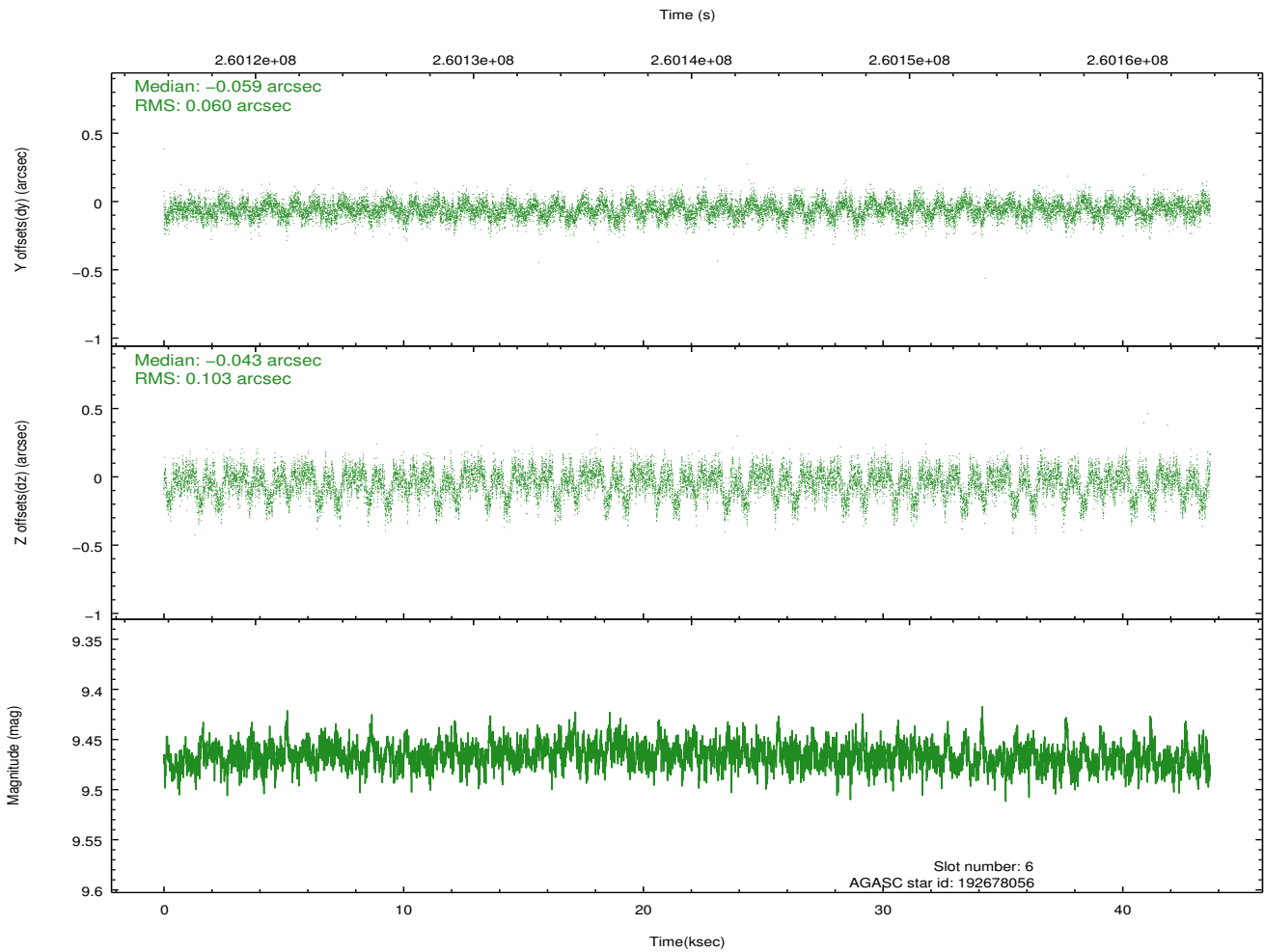
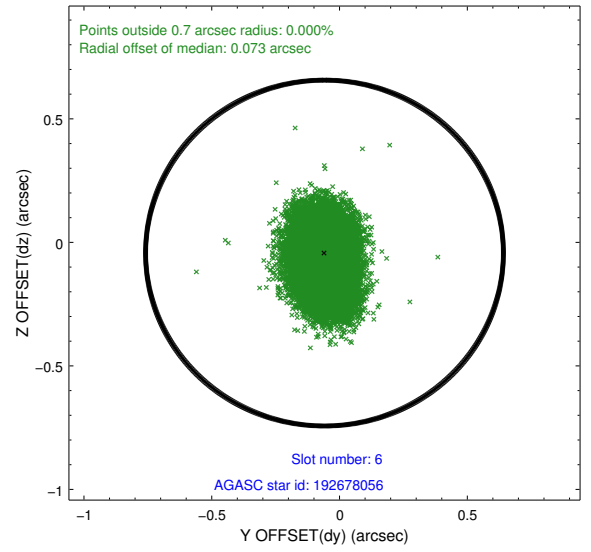
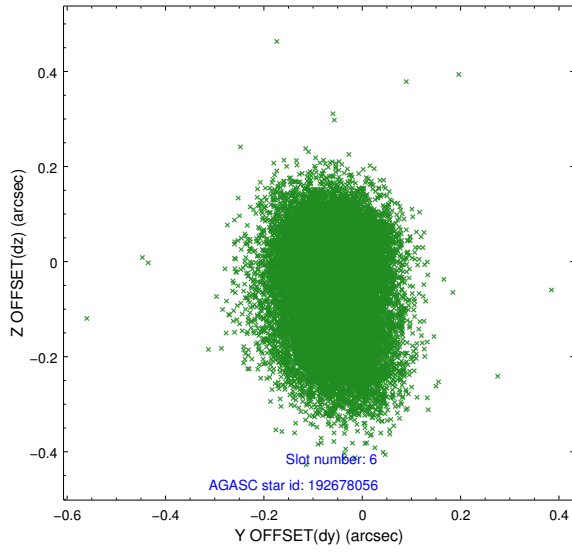
## 2.4.2 Slot 4



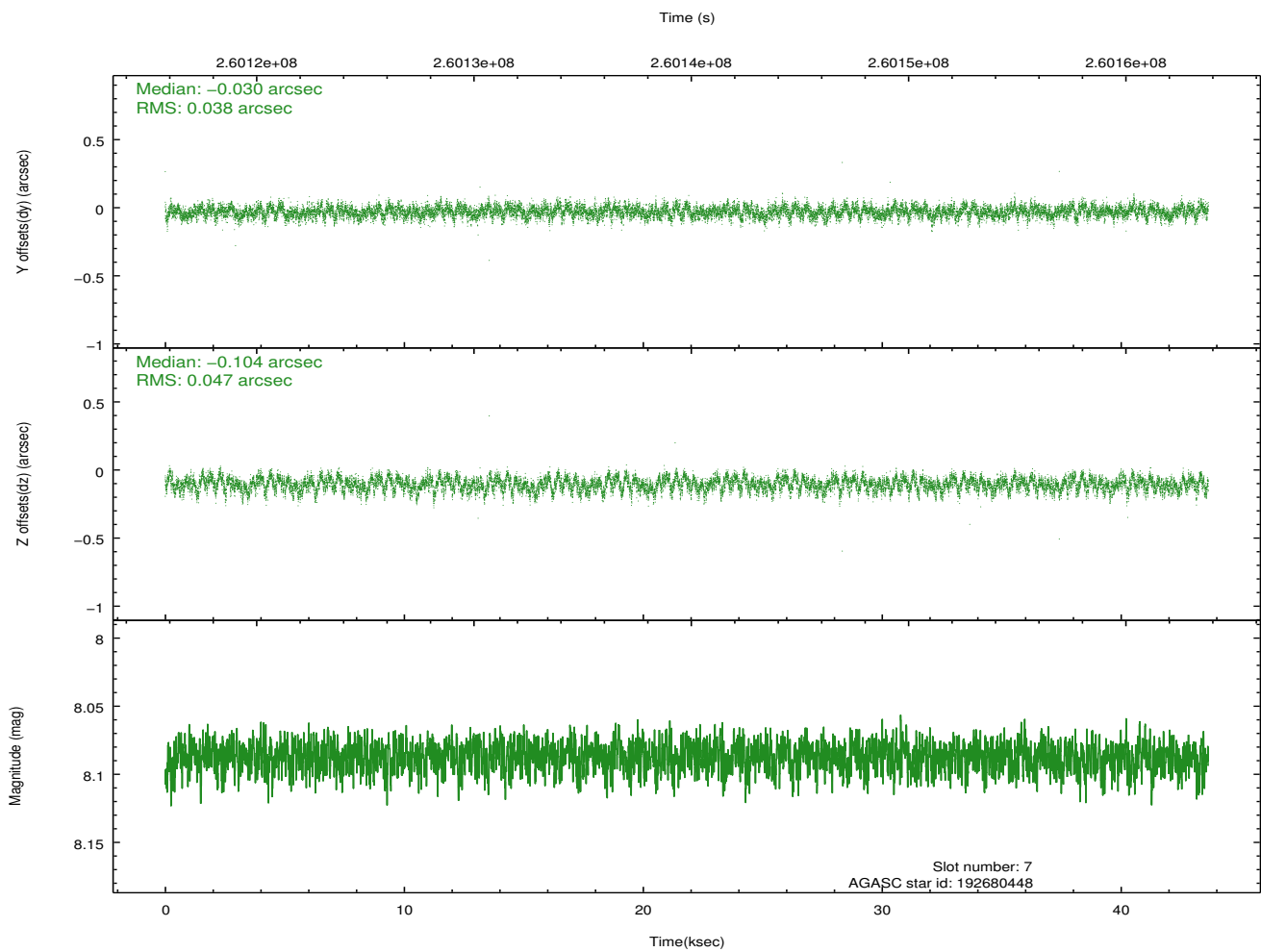
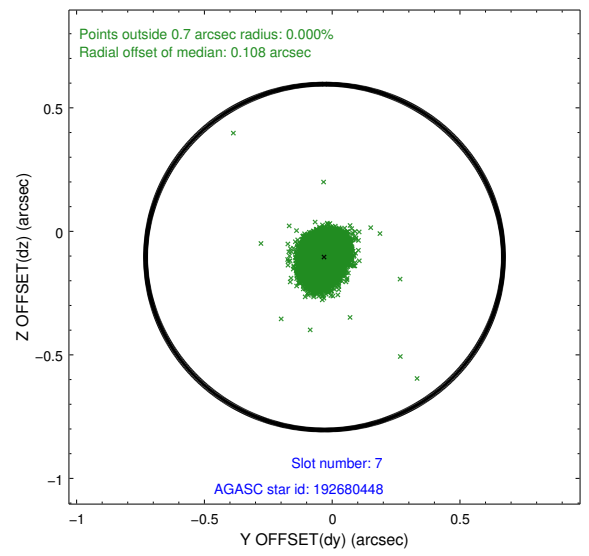
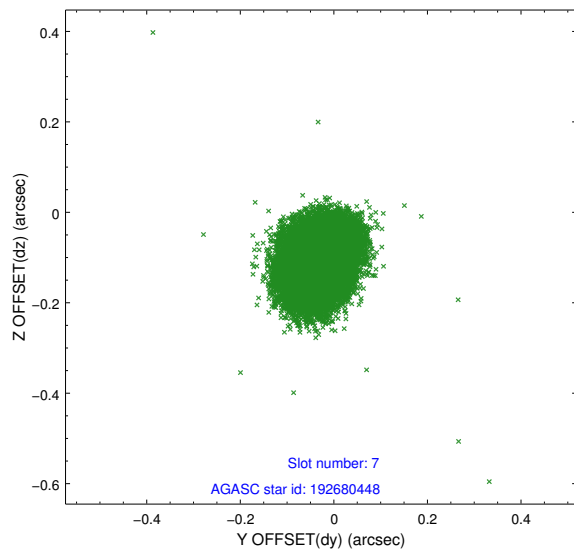
### 2.4.3 Slot 5



### 2.4.4 Slot 6

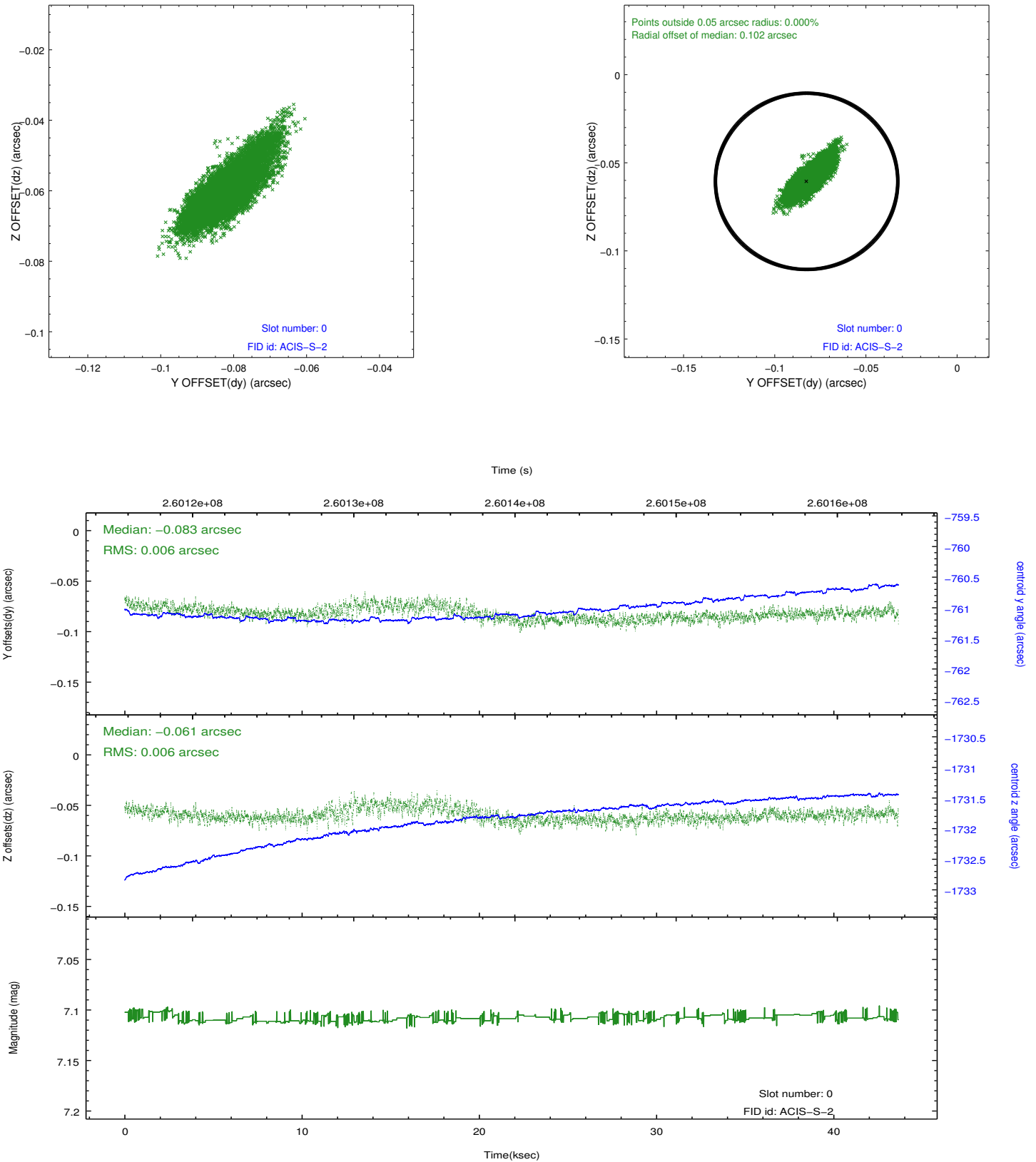


## 2.4.5 Slot 7

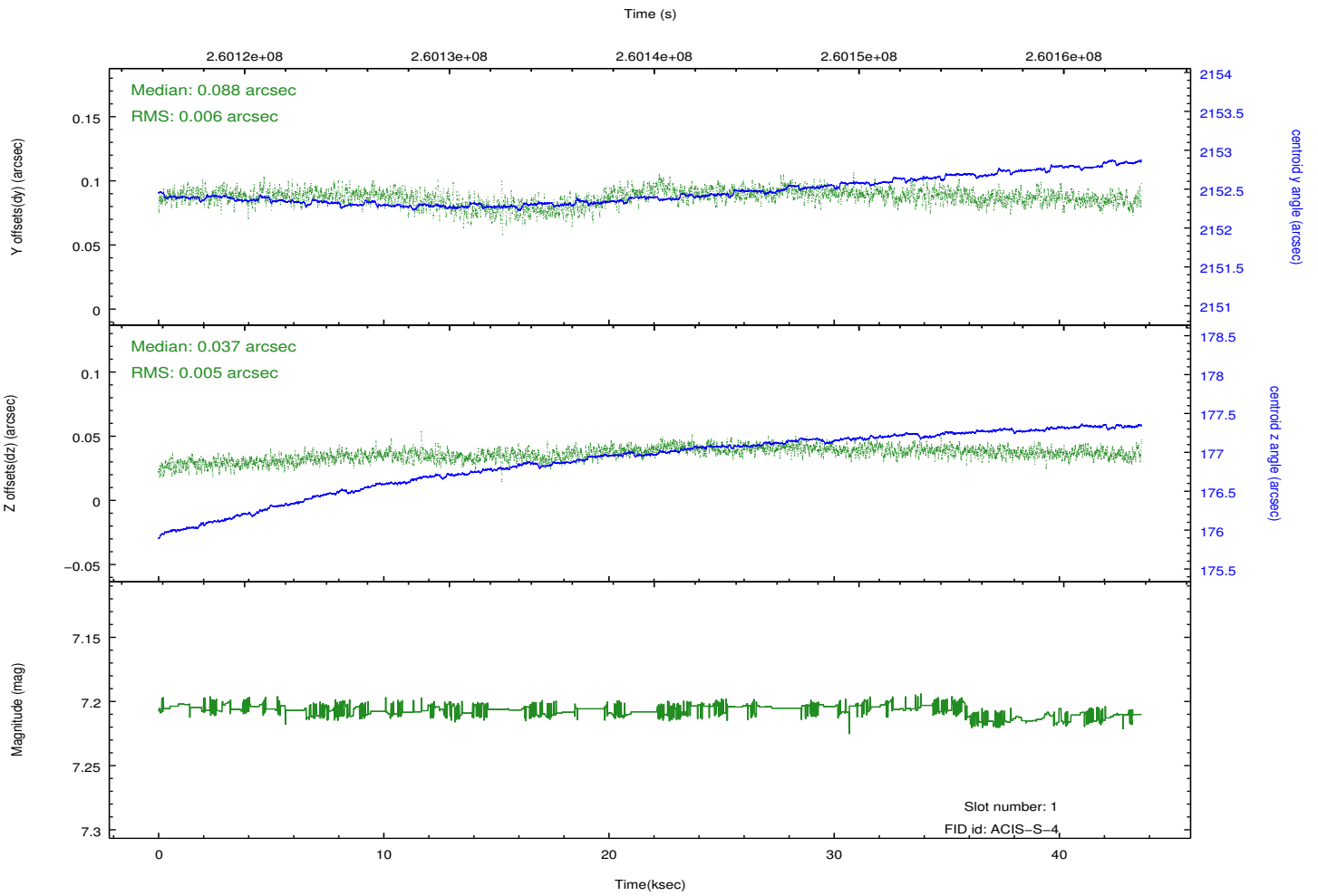
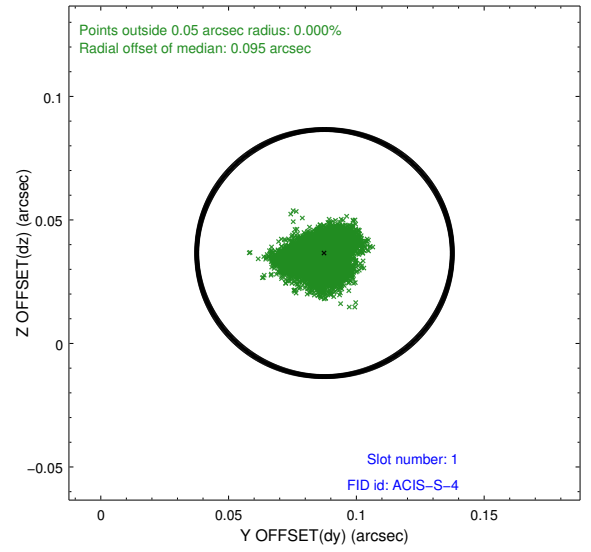
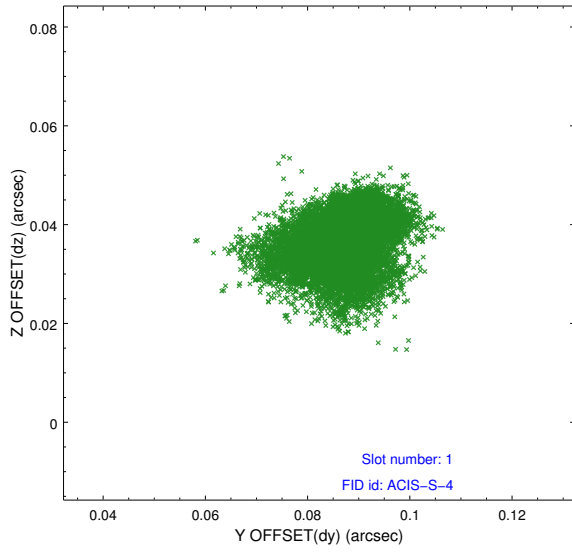


## 2.5 FID Slots

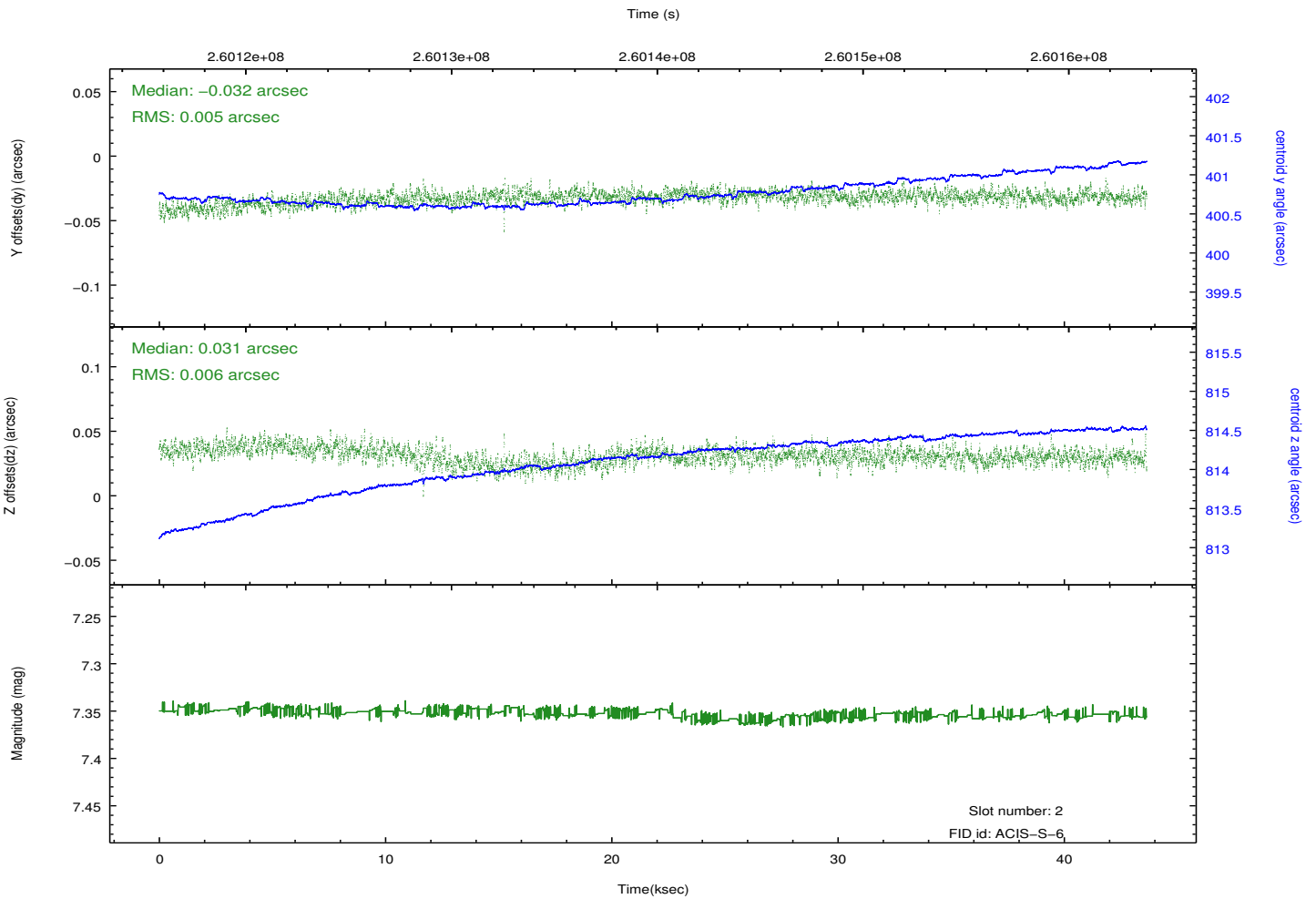
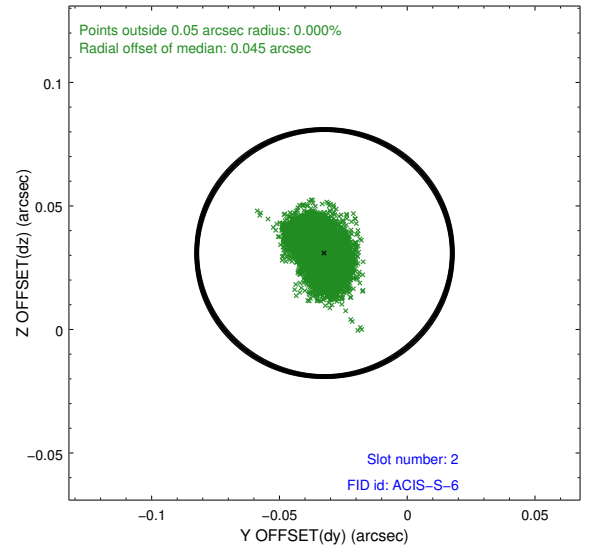
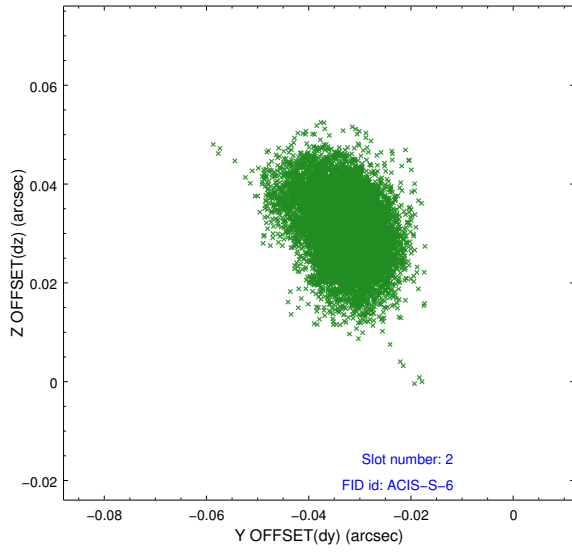
### 2.5.1 Slot 0



## 2.5.2 Slot 1



### 2.5.3 Slot 2



# A Summary

## A.1 Status

V&V Scientist	Jen Lauer
V&V Date (YYYY-MM-DD)	2012.03.30
V&V Edition	1
V&V Disposition and Status	OK
V&V Charge Time	43.6528006

## A.2 Comments

Joint Proposal: HST+NRAO. Roll preference met.