

V&V Reference Report

L2 ASCDS Version : 8.4.3.1

Observation 7323 - L2 Version 2
Chandra X-Ray Center

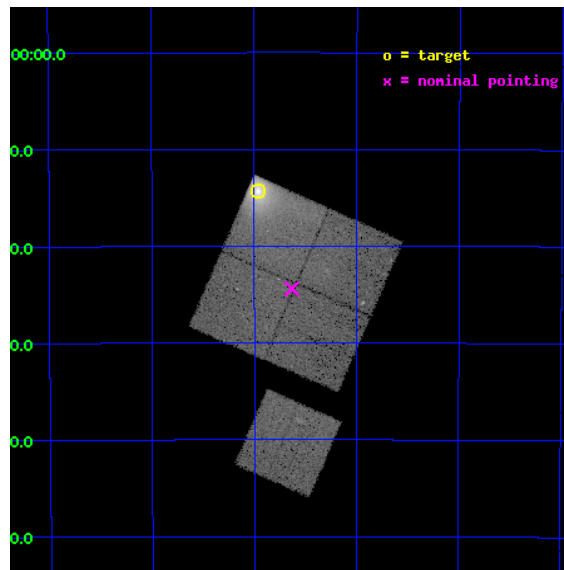
L2 Processing Date : Mar 30 2012

Contents

1	Front	2
2	OBI	3
2.1	OBI	3
2.1.1	Images	3
2.1.2	Bias	3
2.1.3	Parameters	4
2.1.4	Events	4
2.2	Compared Parameters	5
2.3	Aspect	6
2.4	Star Slots	9
2.4.1	Slot 3	9
2.4.2	Slot 4	10
2.4.3	Slot 5	11
2.4.4	Slot 6	12
2.4.5	Slot 7	13
2.5	FID Slots	14
2.5.1	Slot 0	14
2.5.2	Slot 1	15
2.5.3	Slot 2	16
A	Summary	17
A.1	Status	17
A.2	Comments	17

1 Front

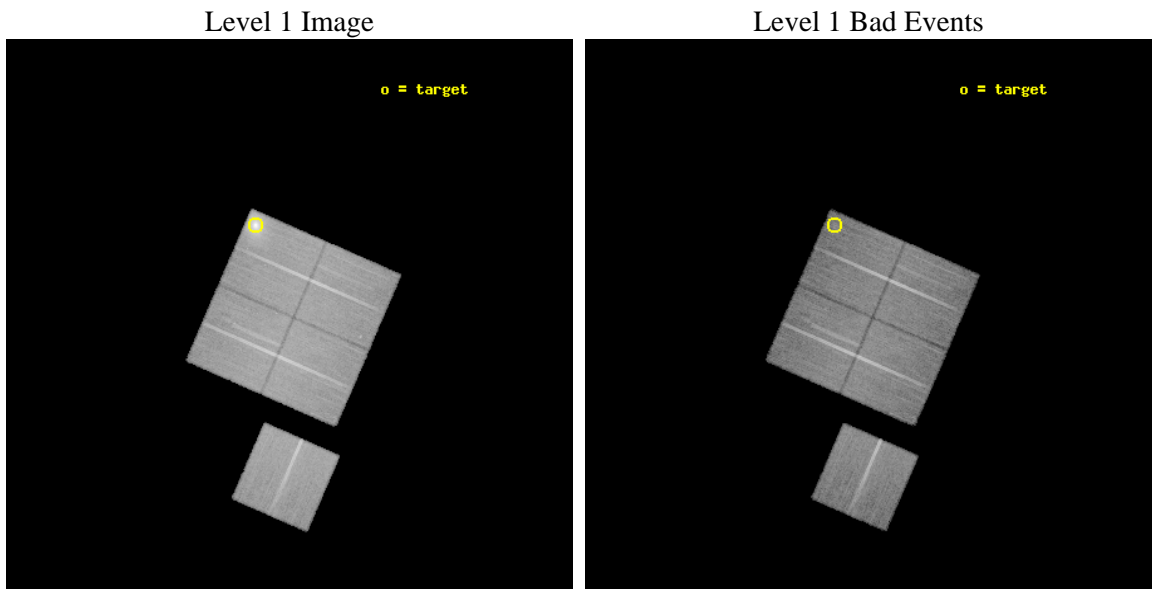
seq_num	800605	Sequence number
obs_id	7323	Observation id
title	VERIFICATION OF THE CLUSTER GAS FRACTION AS A COSMOLOGICAL TOOL	Pr
observer	Dr Maxim Markevitch	Principal investigator
object	A3112_OFF	Source name
dtcycle	0	
cycle	P	events from which exps? Prim/Second/Both
ra_targ	49.490417	Observer's specified target RA [deg]
dec_targ	-44.238056	Observer's specified target Dec [deg]
ra_nom	49.408174401811	Nominal RA [deg]
dec_nom	-44.406784152651	Nominal Dec [deg]
roll_nom	203.55895078759	Nominal Roll [deg]
revision	2	Processing version of data
ontime	28814.07019043	Sum of GTIs [s]
livetime	28437.593150782	Livetime [s]
ontime0	28810.888210088	Sum of GTIs [s]
ontime1	28814.07019043	Sum of GTIs [s]
ontime2	28810.970290035	Sum of GTIs [s]
ontime3	28811.011320084	Sum of GTIs [s]
ontime6	28813.988130301	Sum of GTIs [s]
l2events	158542	Number of level 2 events



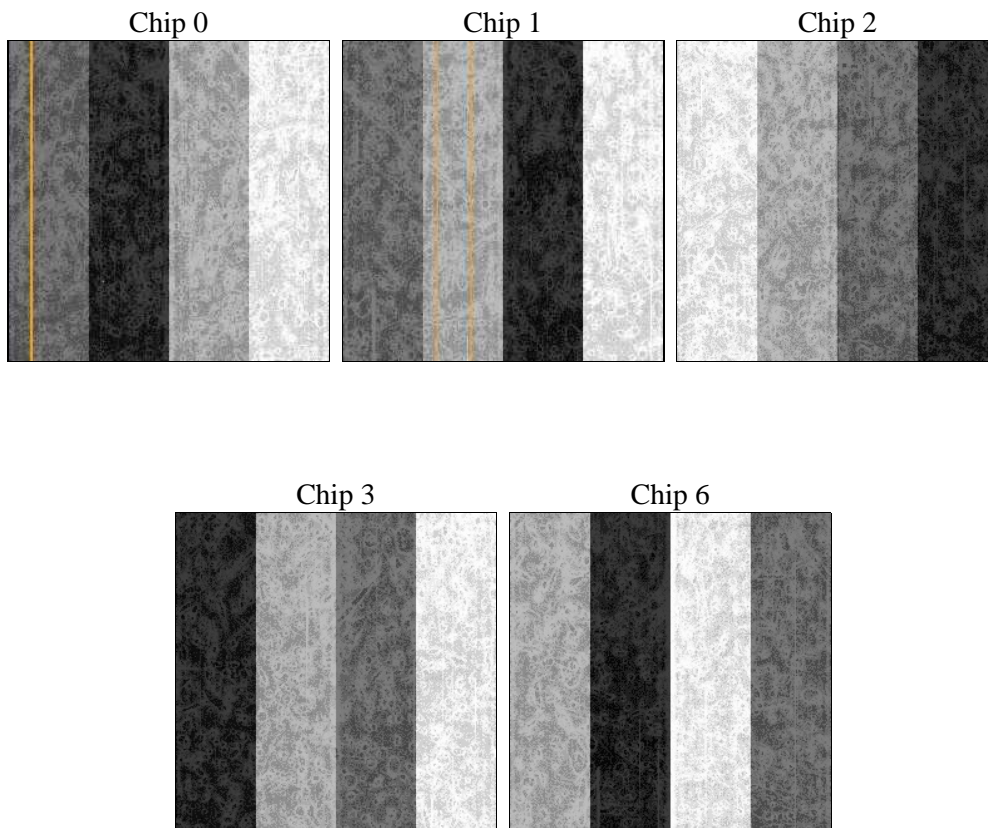
2 OBI

2.1 OBI

2.1.1 Images



2.1.2 Bias



2.1.3 Parameters

obi_num	0	Obi number	sched_exp_time	28769.019000	[s] Scheduled observation exposure time
ascdsver	8.4.3.1	Processing system revision	ontime	28814.07019043	Sum of GTIs [s]
caldbver	4.4.8	 	ontime0	28810.888210088	Sum of GTIs [s]
date	2012-03-30T19:04:52	Date and time of file creation	ontime1	28814.07019043	Sum of GTIs [s]
revision	2	Processing version of data	ontime2	28810.970290035	Sum of GTIs [s]
			ontime3	28811.011320084	Sum of GTIs [s]
			ontime6	28813.988130301	Sum of GTIs [s]
			l1events	1135567	Number of level 1 events

2.1.4 Events

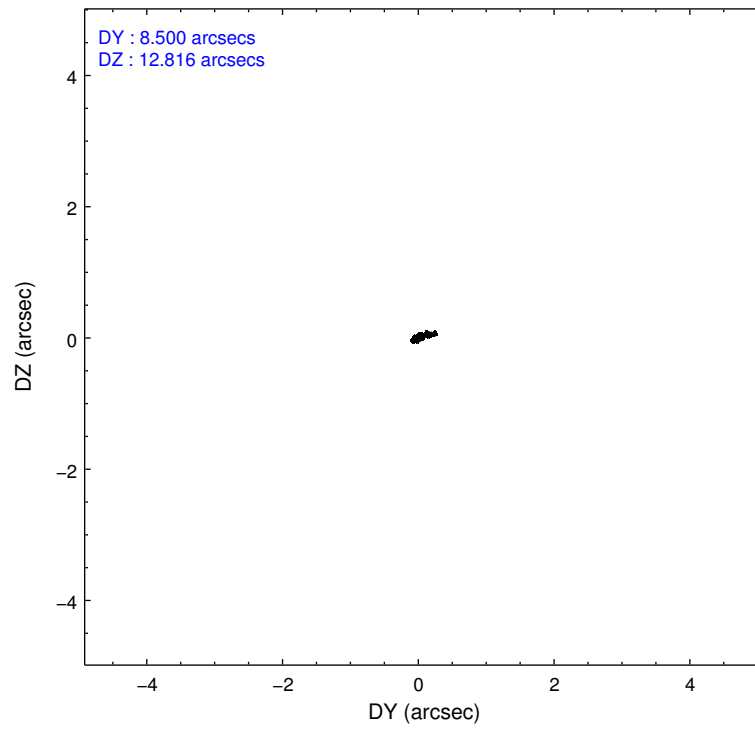
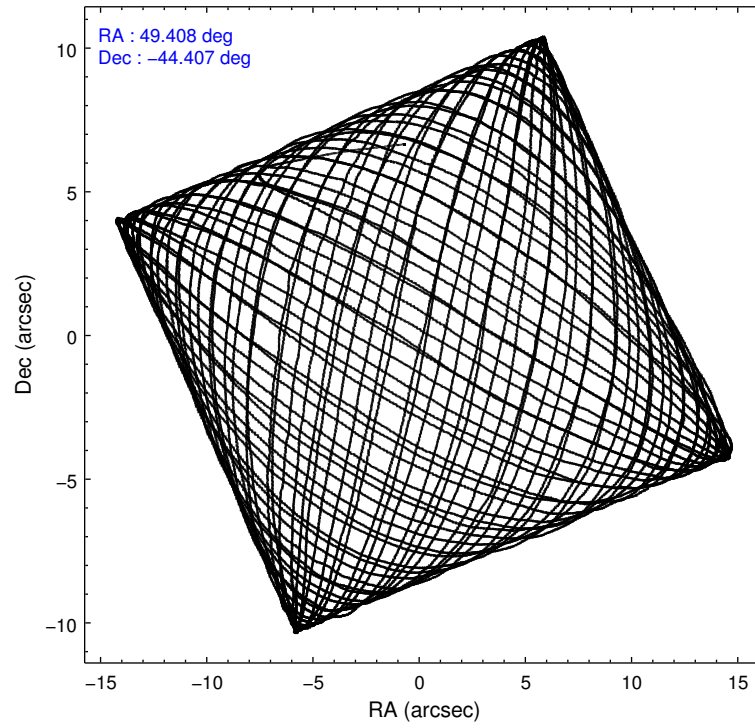
	ccd 0	ccd 1	ccd 2	ccd 3	ccd 6
level 1 events	209190	264157	227185	220733	214302
rejected events	184955	176702	205330	198043	191308
rejected %	88%	66%	90%	89%	89%

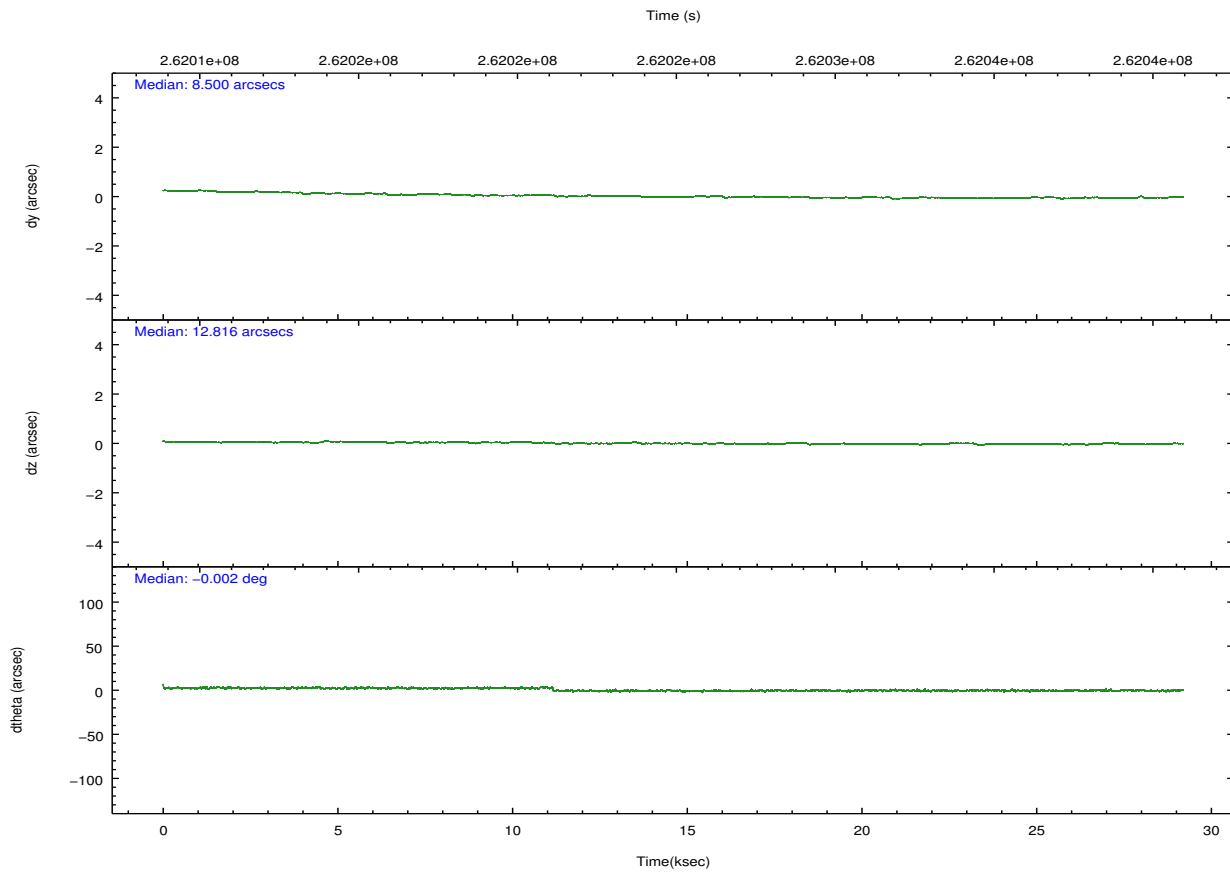
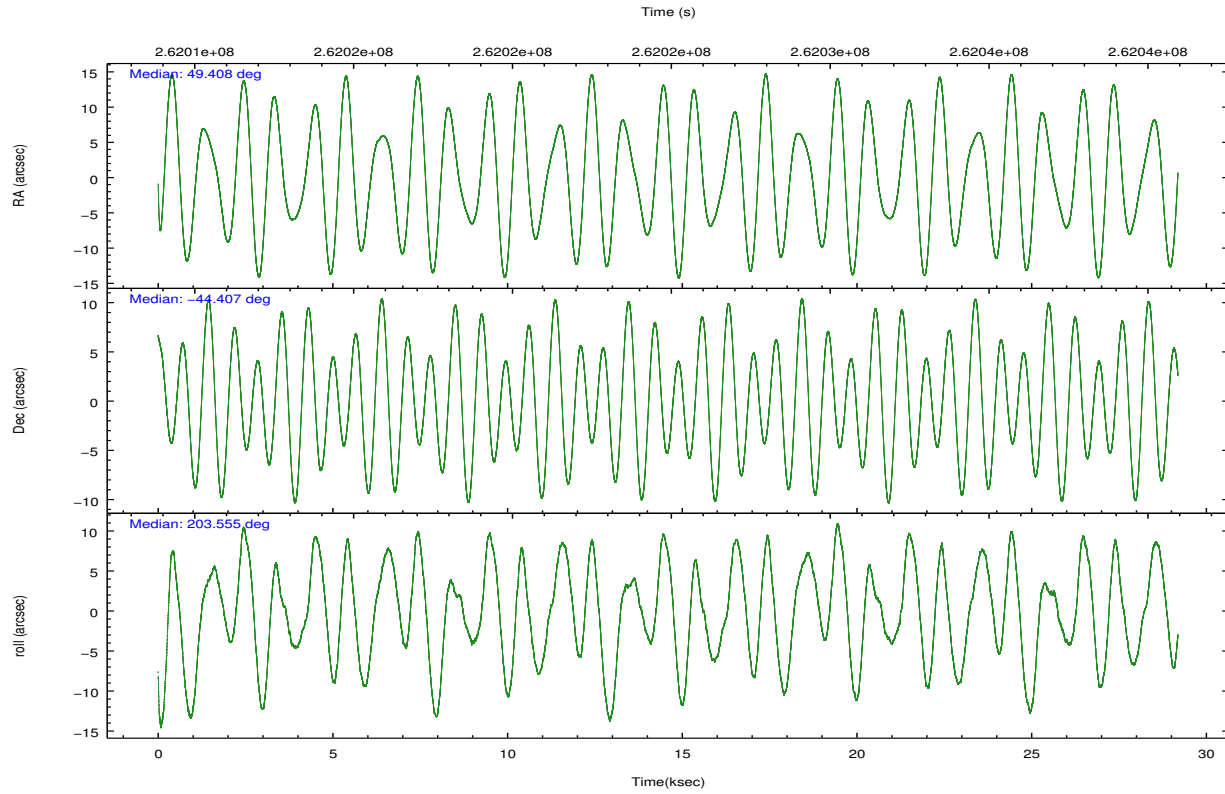
	ccd 0	ccd 1	ccd 2	ccd 3	ccd 6
grade 0 events	9799	59741	8365	8888	8330
	4%	22%	3%	4%	3%
grade 1 events	100	349	115	119	99
	0%	0%	0%	0%	0%
grade 2 events	5394	11801	4930	4756	4890
	2%	4%	2%	2%	2%
grade 3 events	2460	4721	2256	2422	2487
	1%	1%	0%	1%	1%
grade 4 events	2284	4611	2405	2372	2414
	1%	1%	1%	1%	1%
grade 5 events	7153	8315	6942	8729	8529
	3%	3%	3%	3%	3%
grade 6 events	4299	6594	3900	4255	4878
	2%	2%	1%	1%	2%
grade 7 events	177701	168025	198272	189192	182675
	84%	63%	87%	85%	85%

2.2 Compared Parameters

Parameter	Planned	Actual	Parameter	Planned	Actual
Instrument	ACIS	ACIS	Obspar format version number	7	7
Detector	ACIS-01236	ACIS-01236	Obspar file type	PREDICTED	ACTUAL
Grating	NONE	NONE	Obspar update status	NONE	UPDATED
Data mode	VFAINT	VFAINT	Number of optional ACIS chips dropped	0	0
Observation mode	POINTING	POINTING	On-chip summing requested	N	N
[deg] Pointing RA	49.430840	49.40817440181095	Subarray requested	NONE	NONE
[deg] Pointing Dec	-44.384694	-44.40678415265111	Alternating exposures requested	N	N
[deg] Pointing Roll	203.366124	203.5589507875904	[s] Primary exposure time	0.000000	3.1
[mm] SIM focus pos	-0.782348	-0.7809083437167272			
[mm] SIM defocus	0	0.001439871863259334			
[mm] SIM translation stage pos	-233.592463	-233.5874344608287			
[mm] SIM translation stage offset	0	-0.005018542100998502			
[s] Observation start time (MET)	262010721.184000	262009668.90966			
Observation start date	2006-04-21T12:44:16	2006-04-21T12:27:48			
[s] Observation end time (MET)	262039490.184000	262039726.52356			
Observation end date	2006-04-21T20:43:45	2006-04-21T20:48:46			
Read mode	TIMED	TIMED			

2.3 Aspect



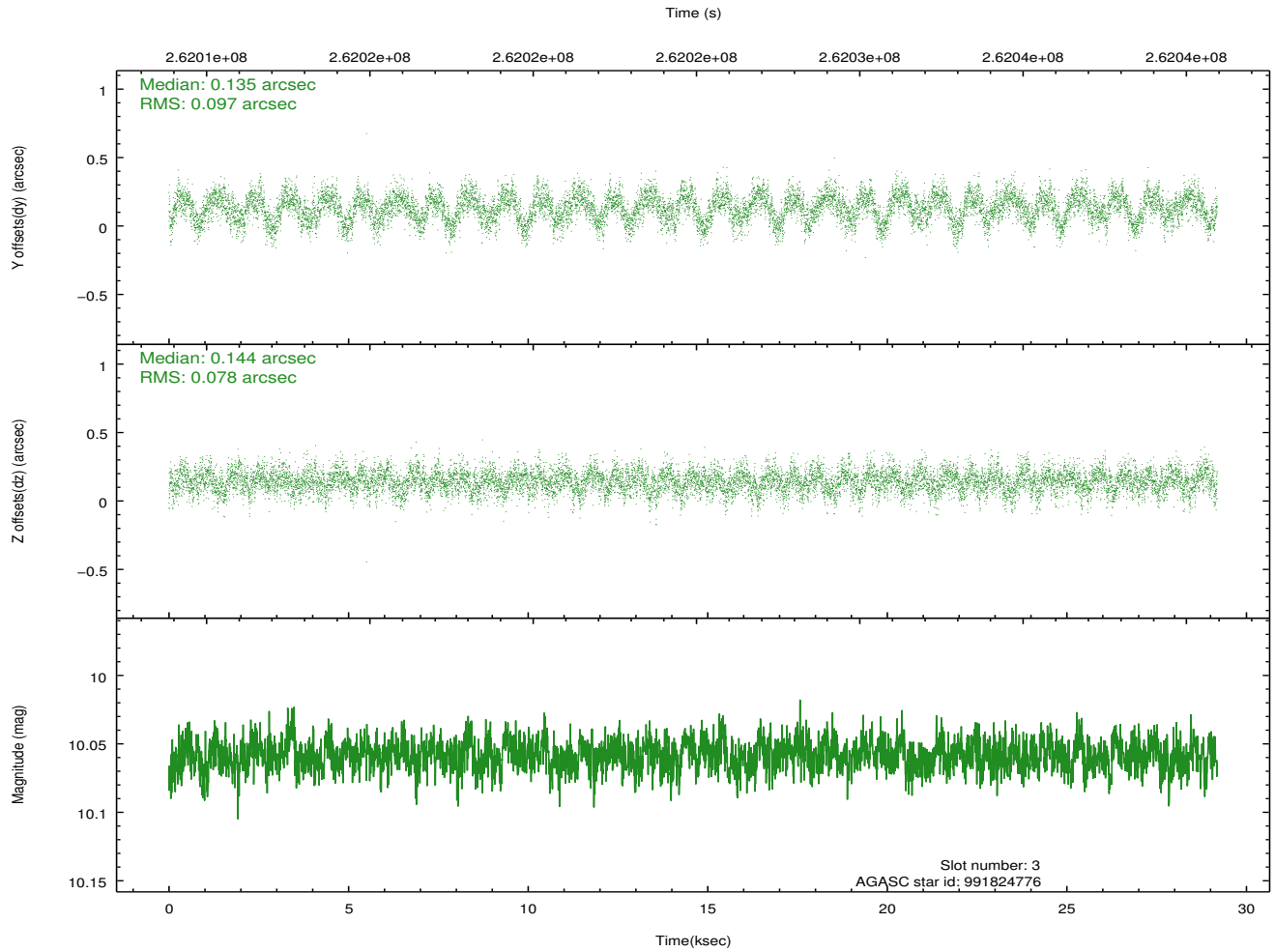
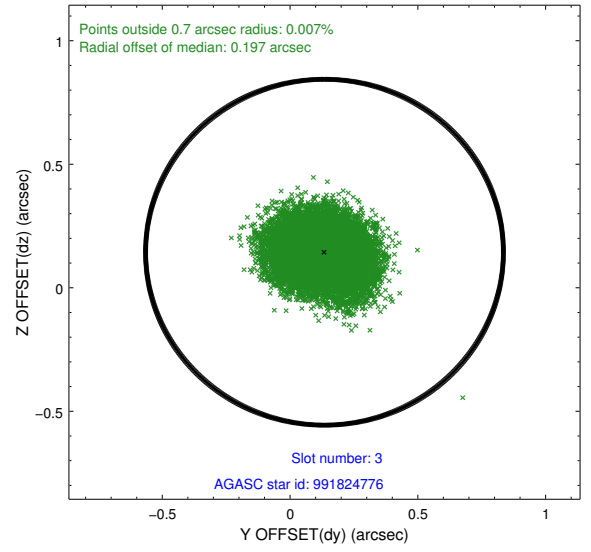
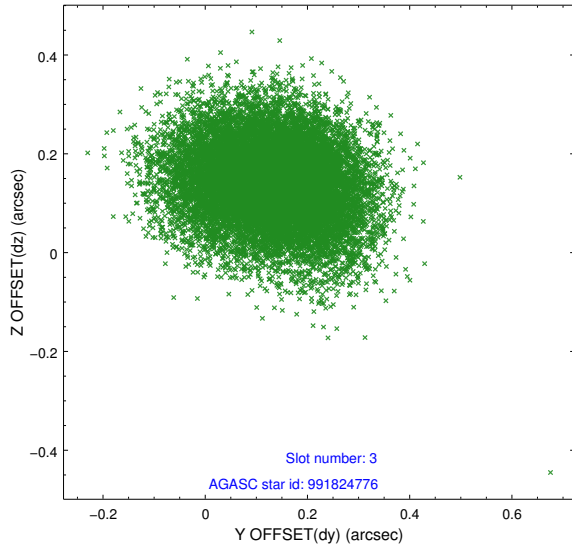


Slot Statistics

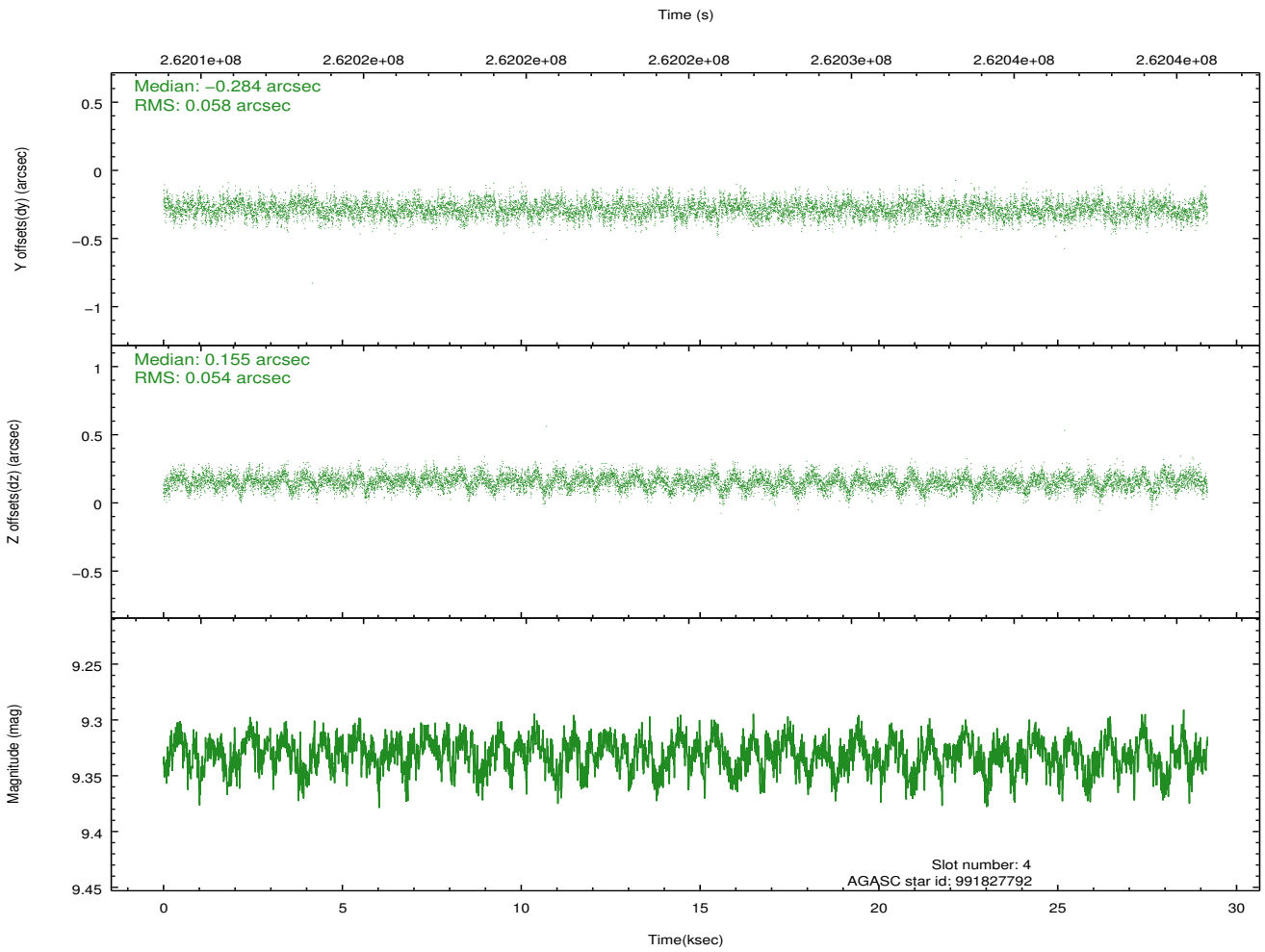
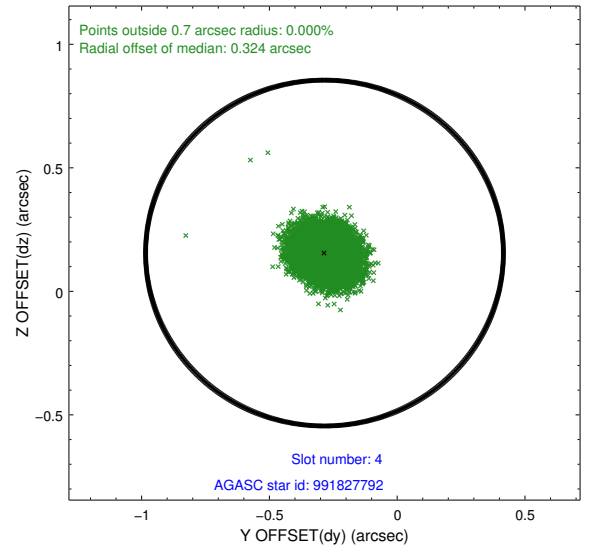
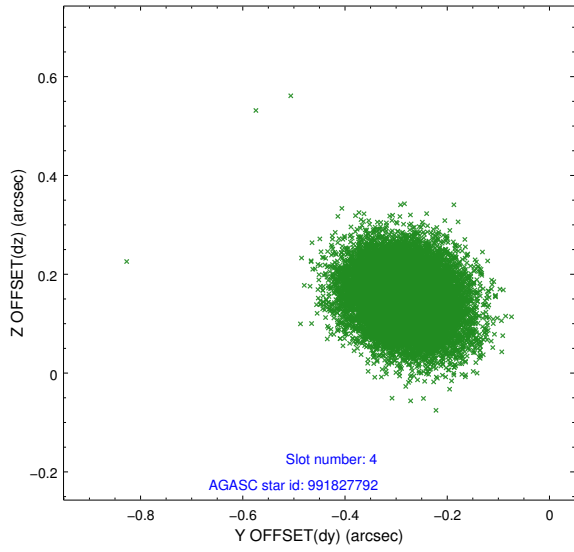
slot	status	id	mag	n_pts	med_dy	med_dz	dr1	dr2	ra	dec	mean_y	mean_z
0	FID	ACIS-I-1	7.24	7118	-0.022	-0.034	0.030	0.042	0.000000	0.000000	931.08	-836.40
1	FID	ACIS-I-4	7.18	7118	0.163	0.058	0.024	0.035	0.000000	0.000000	2151.37	1063.44
2	FID	ACIS-I-5	7.22	7120	-0.239	0.045	0.014	0.023	0.000000	0.000000	-1817.02	1061.39
3	GUIDE	991824776	10.06	14207	0.135	0.144	0.133	0.214	49.926666	-44.024984	-1689.77	-675.77
4	GUIDE	991827792	9.33	14231	-0.284	0.155	0.084	0.135	48.737837	-44.562562	1888.59	-109.62
5	GUIDE	991830656	9.09	14229	0.149	-0.117	0.093	0.146	49.908080	-44.245128	-1326.95	30.42
6	GUIDE	991831072	7.77	14237	-0.043	-0.073	0.073	0.118	48.737752	-44.120462	1270.17	-1576.30
7	GUIDE	991825240	10.21	14213	0.051	-0.101	0.188	0.301	49.681873	-44.872310	108.96	1866.65

2.4 Star Slots

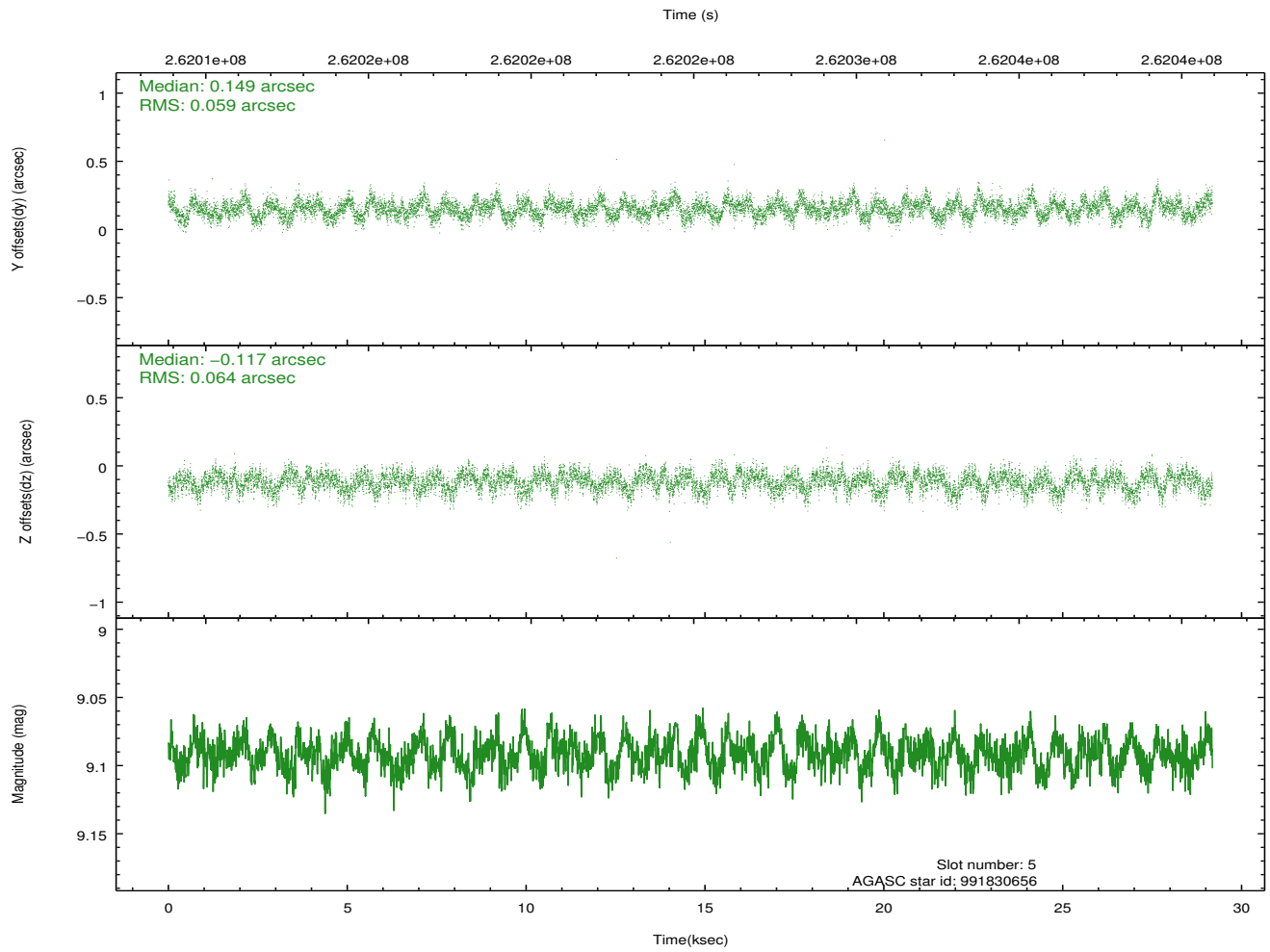
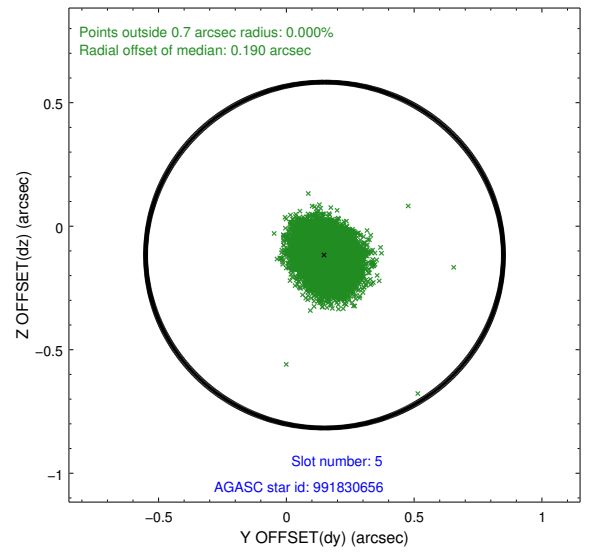
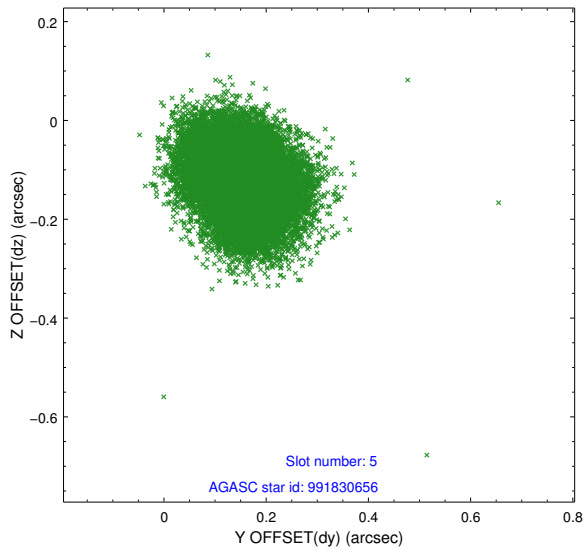
2.4.1 Slot 3



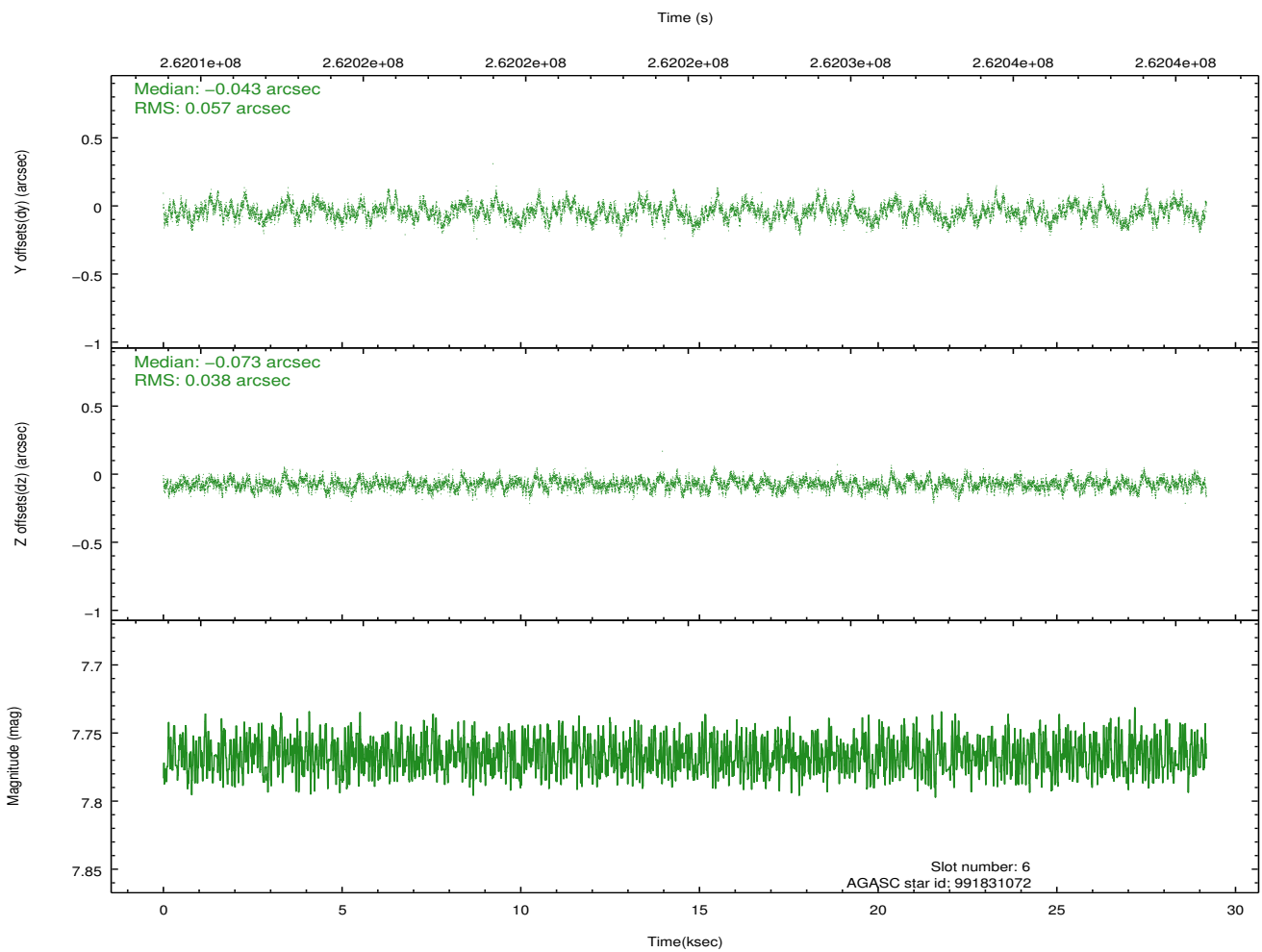
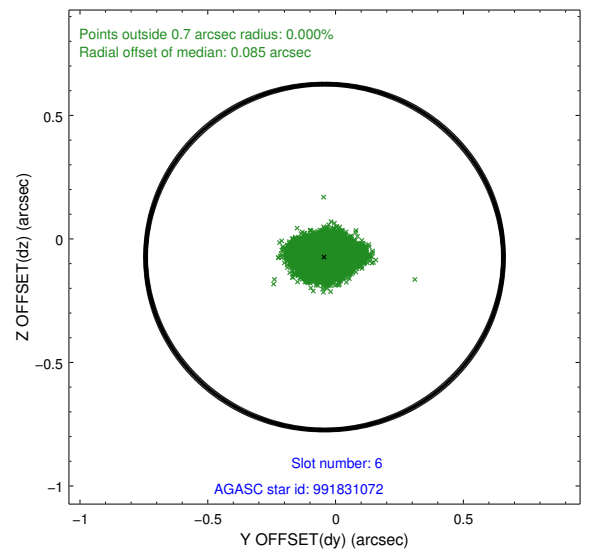
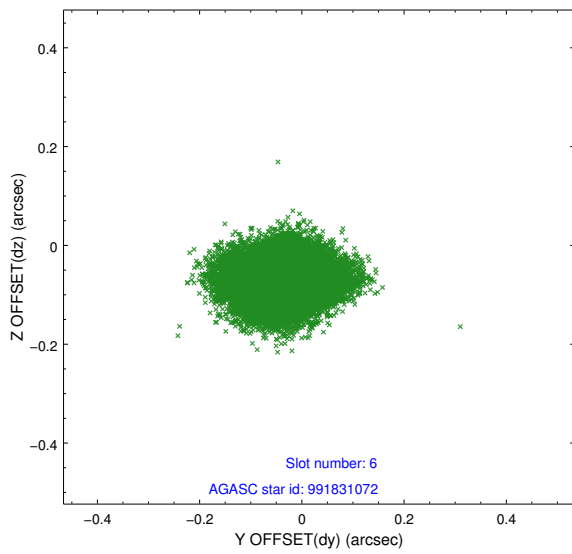
2.4.2 Slot 4



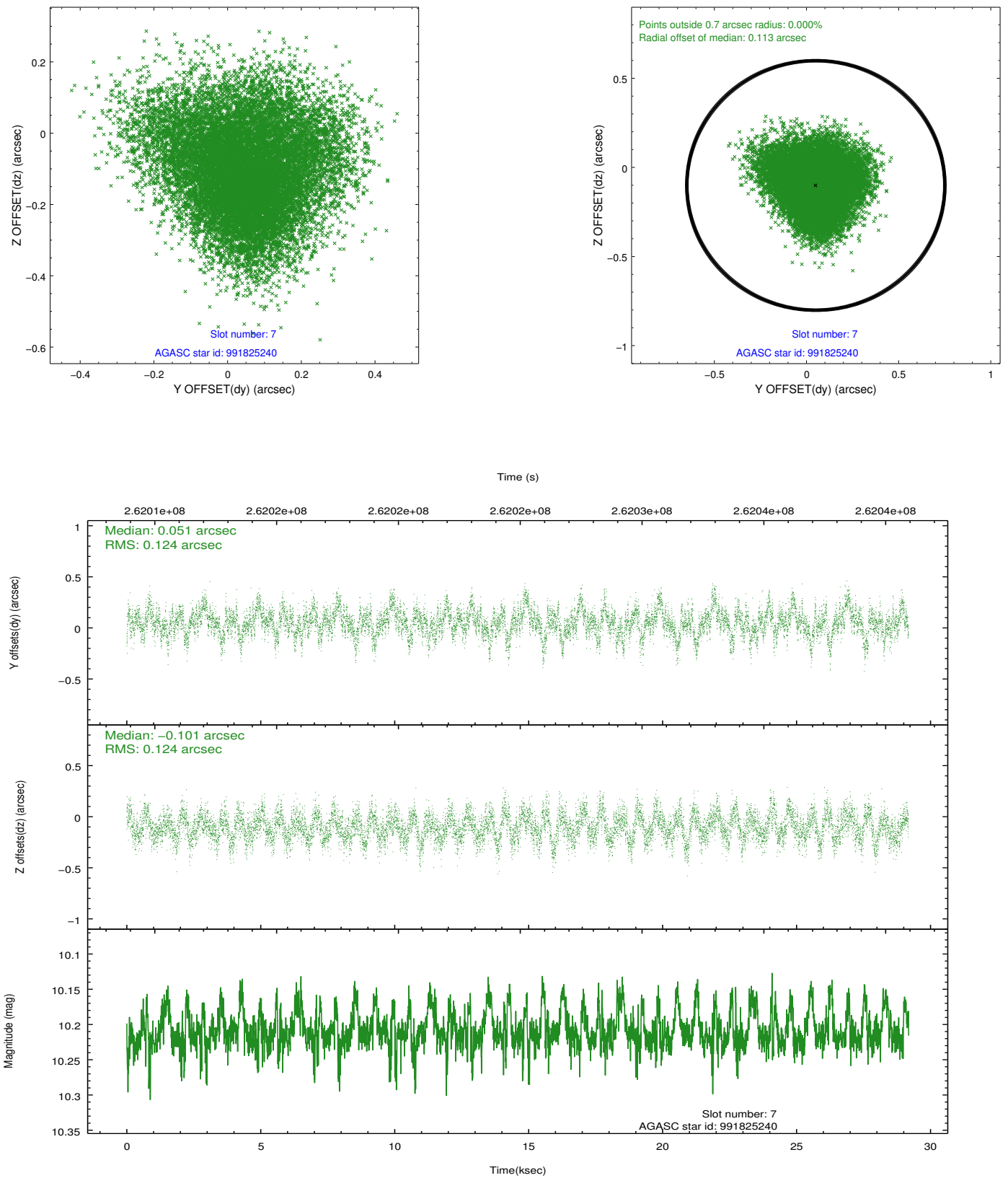
2.4.3 Slot 5



2.4.4 Slot 6

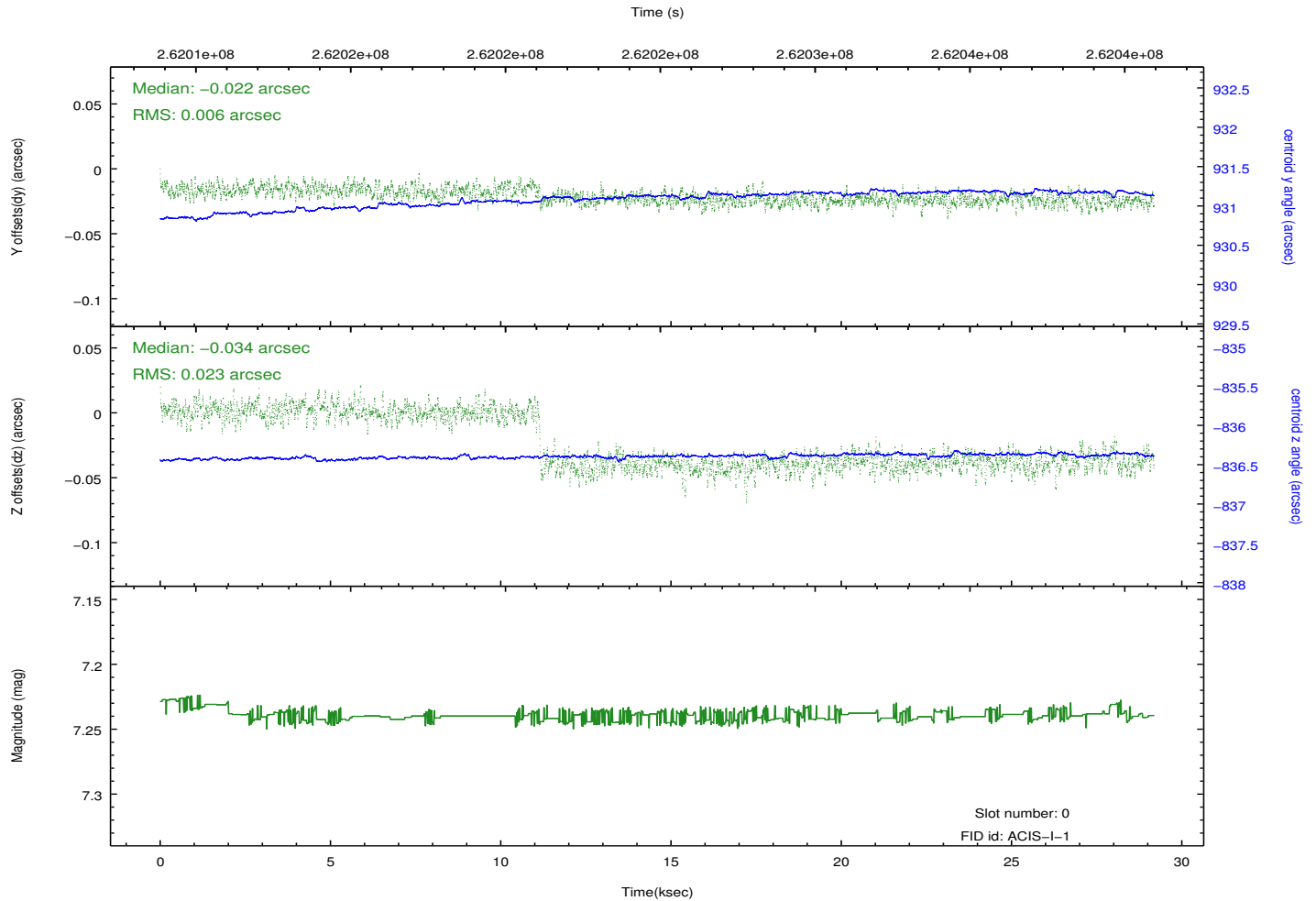
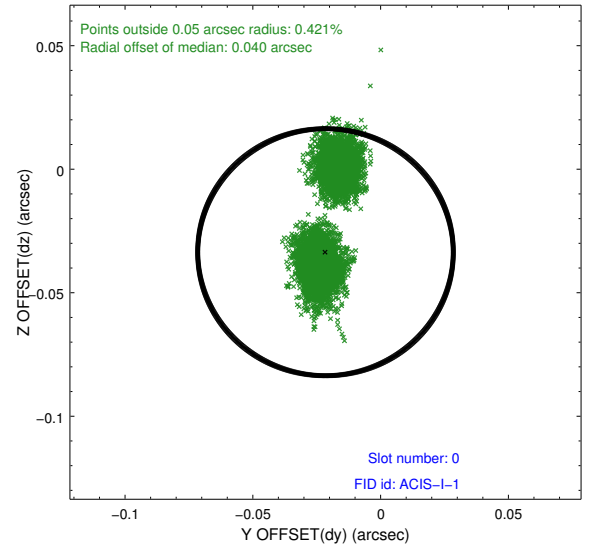
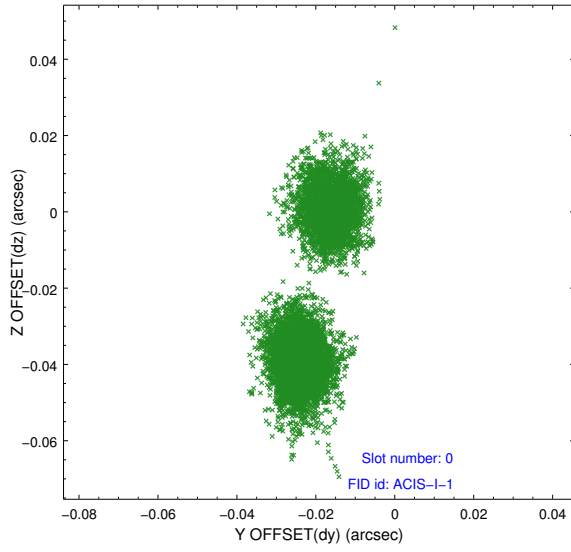


2.4.5 Slot 7

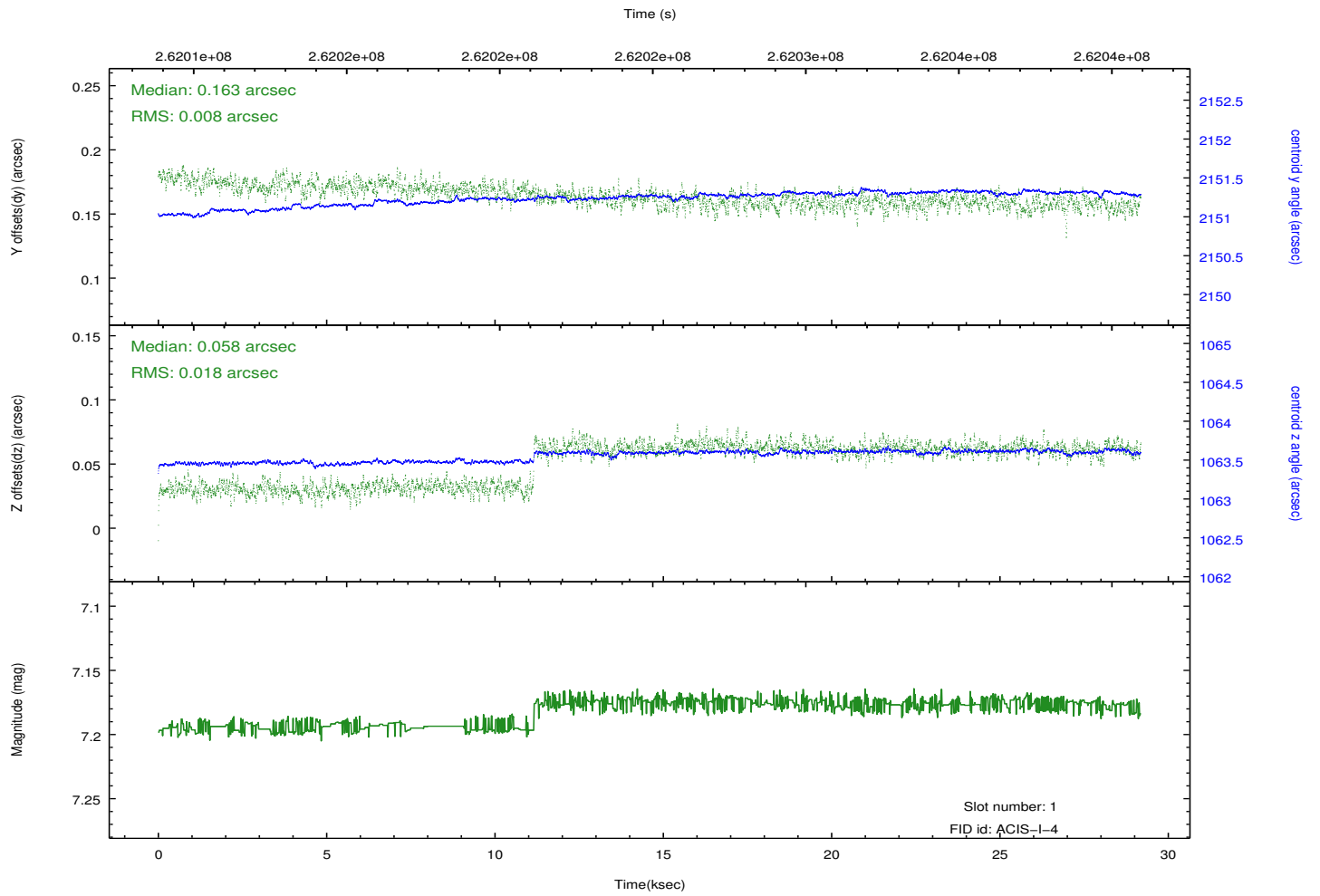
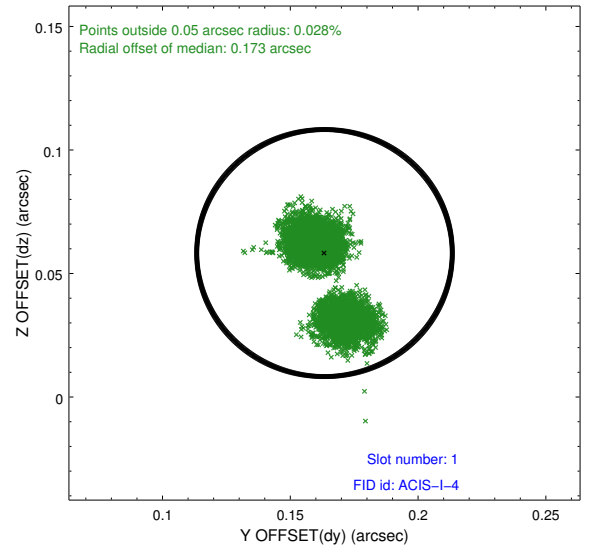
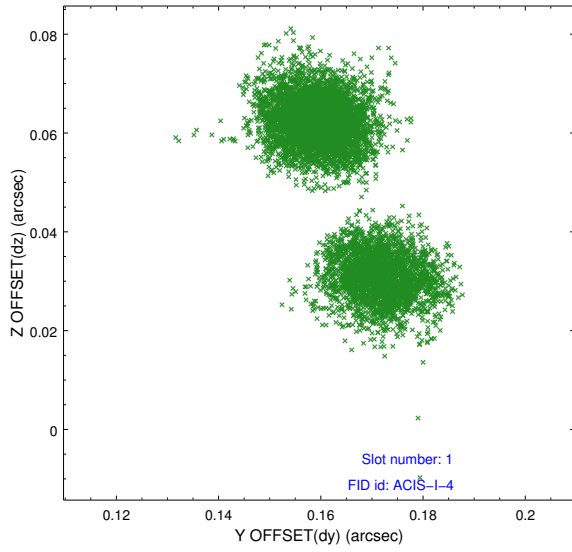


2.5 FID Slots

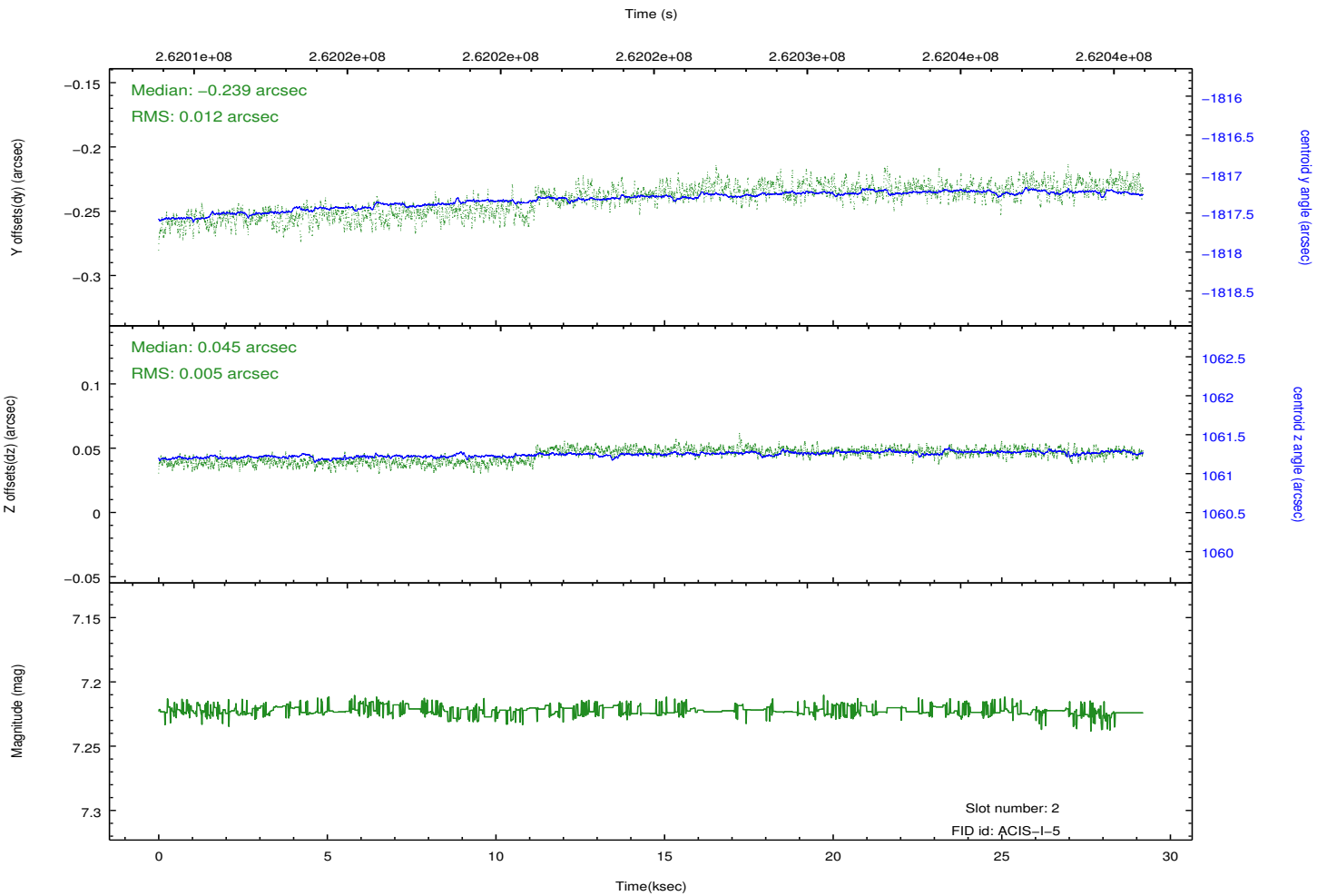
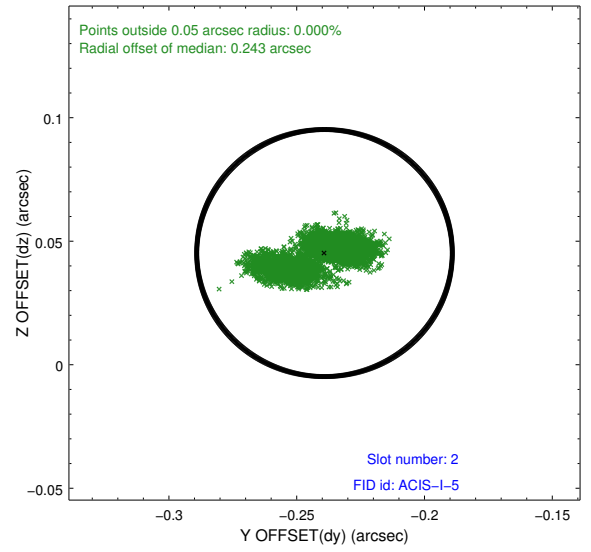
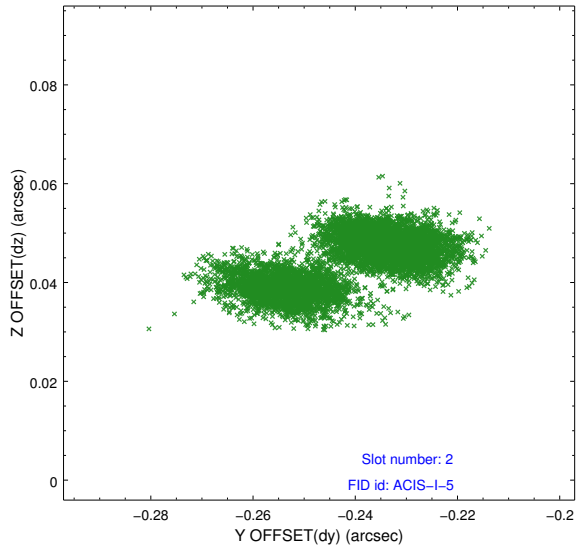
2.5.1 Slot 0



2.5.2 Slot 1



2.5.3 Slot 2



A Summary

A.1 Status

V&V Scientist	Jen Lauer
V&V Date (YYYY-MM-DD)	2012.04.02
V&V Edition	1
V&V Disposition and Status	OK
V&V Charge Time	28.8144589

A.2 Comments