

# V&V Reference Report

## L2 ASCDS Version : 8.4.3.1

Observation 7403 - L2 Version 3  
Chandra X-Ray Center

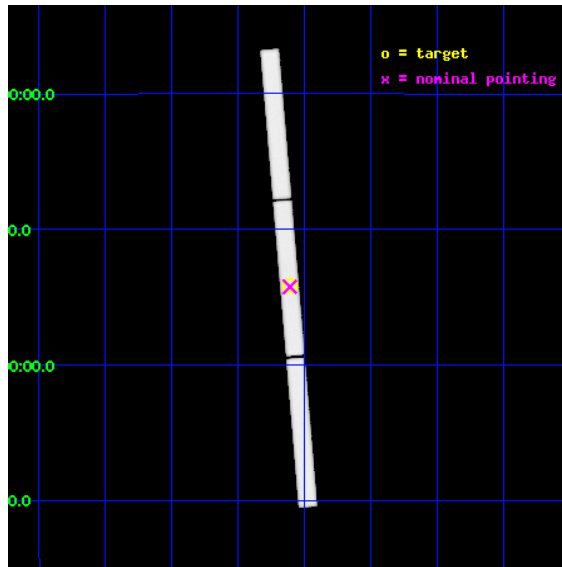
L2 Processing Date : Aug 11 2012

## Contents

<b>1</b>	<b>Front</b>	<b>2</b>
<b>2</b>	<b>OBI</b>	<b>3</b>
2.1	OBI . . . . .	3
2.1.1	Images . . . . .	3
2.1.2	Parameters . . . . .	4
2.1.3	Events . . . . .	4
2.2	Compared Parameters . . . . .	5
2.3	Aspect . . . . .	6
2.4	Star Slots . . . . .	9
2.4.1	Slot 3 . . . . .	9
2.4.2	Slot 4 . . . . .	10
2.4.3	Slot 5 . . . . .	11
2.4.4	Slot 6 . . . . .	12
2.4.5	Slot 7 . . . . .	13
2.5	FID Slots . . . . .	14
2.5.1	Slot 0 . . . . .	14
2.5.2	Slot 1 . . . . .	15
2.5.3	Slot 2 . . . . .	16
<b>3</b>	<b>Gratings</b>	<b>17</b>
3.1	LETG Arm . . . . .	17
<b>A</b>	<b>Summary</b>	<b>19</b>
A.1	Status . . . . .	19
A.2	Comments . . . . .	19

# 1 Front

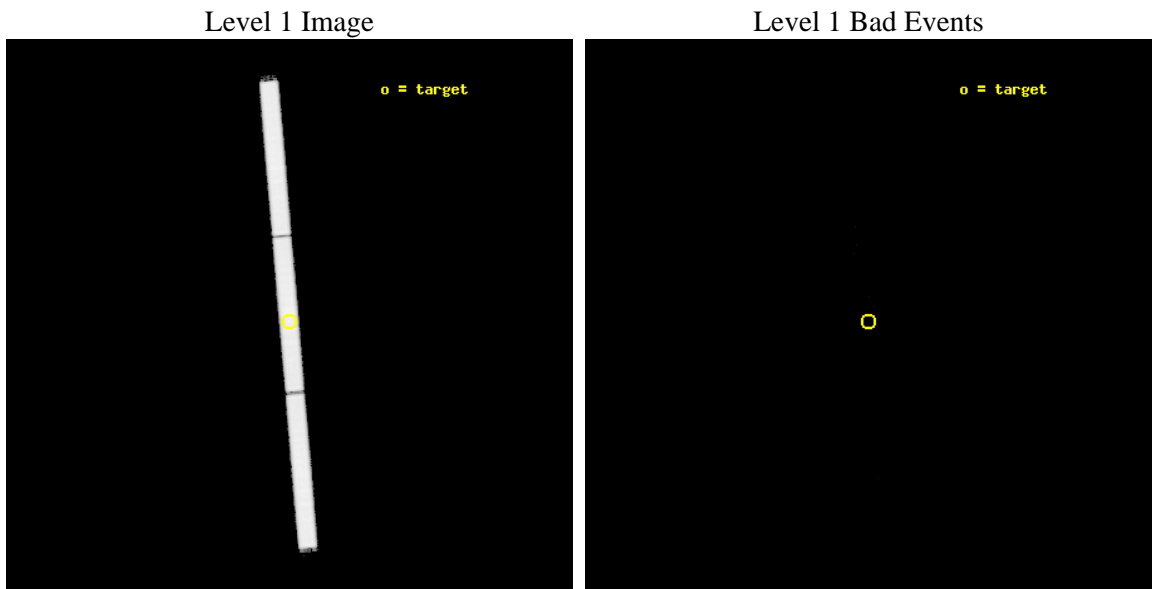
seq_num	300185	Sequence number
obs_id	7403	Observation id
title	RS Oph: Exploring the Site of a Recurrent Symbiotic Nova Explosion	&#160
observer	Regents' Professor Sumner Starrfield	Principal investigator
object	RS Oph	Source name
ra_targ	267.555	Observer's specified target RA [deg]
dec_targ	-6.707917	Observer's specified target Dec [deg]
ra_nom	267.55443801063	Nominal RA [deg]
dec_nom	-6.7125494930793	Nominal Dec [deg]
roll_nom	265.06725715389	Nominal Roll [deg]
revision	3	Processing version of data
ontime	18085.357100129	[s]
livetime	17921.238856911	Ontime multiplied by DTCOR
l2events	1382492	Number of level 2 events



## 2 OBI

### 2.1 OBI

#### 2.1.1 Images



## 2.1.2 Parameters

obi_num	0	Obi number	sched_exp_time	17518.978000	[s] Scheduled observation exposure time
ascdsver	8.4.5	Processing system revision	ontime	18085.357100129	[s]
caldbver	4.5.1.1	&#160	l1events	1903749	Number of level 1 events
date	2012-08-11T10:22:45	Date and time of file creation			
revision	3	Processing version of data			

## 2.1.3 Events

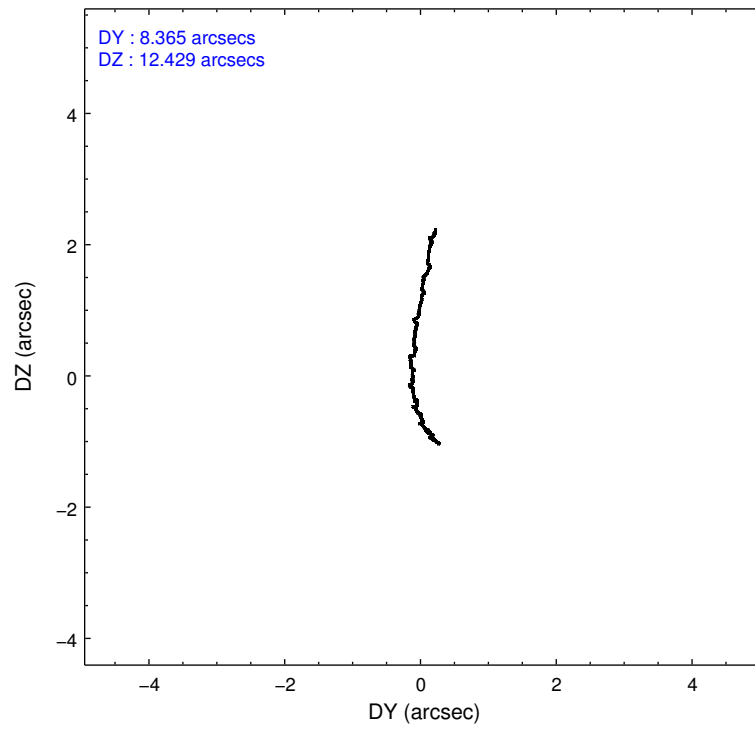
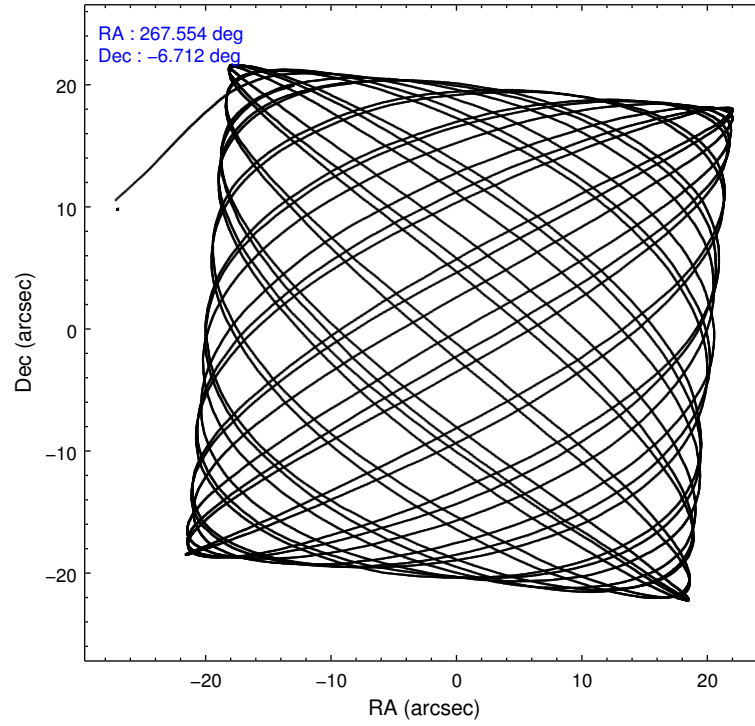
### Level 1 Events

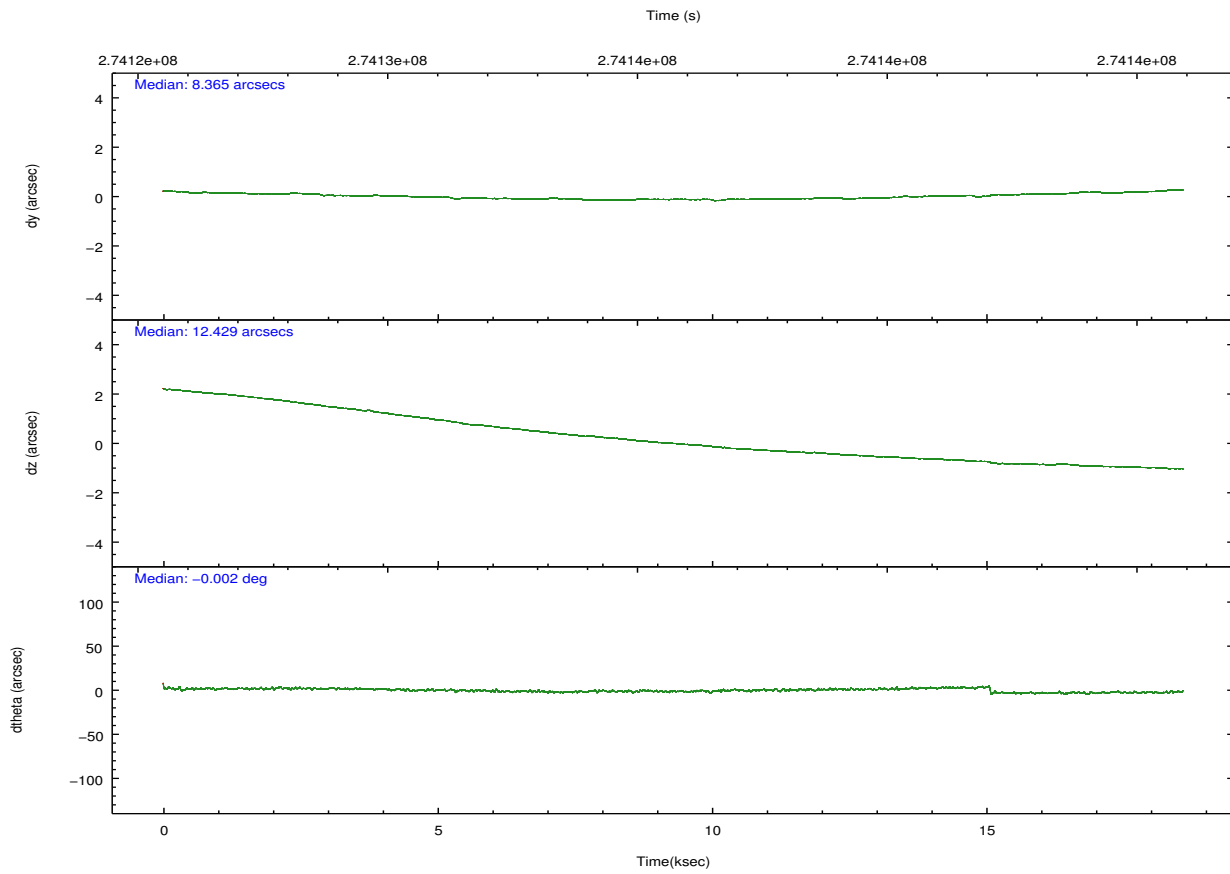
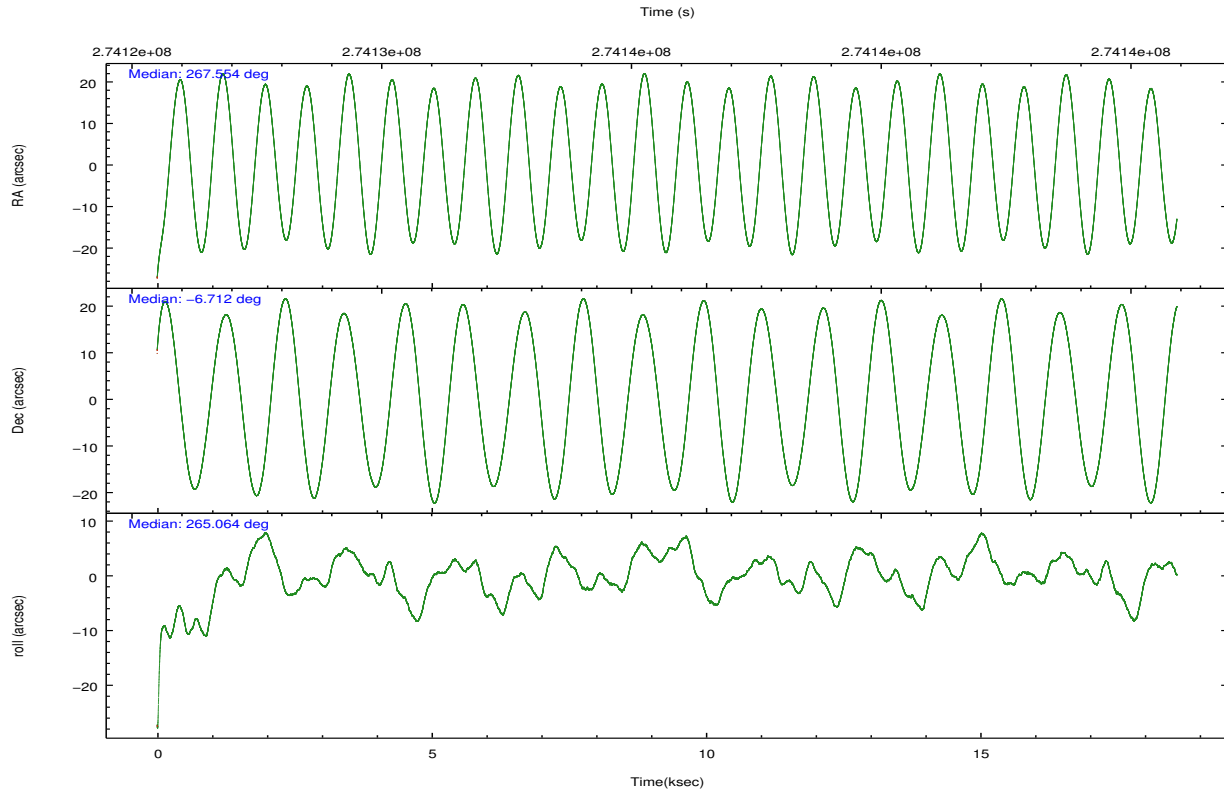
	<b>segment 1</b>	<b>segment 2</b>	<b>segment 3</b>
level 1 events	644220	622156	637373
rejected events	29998	29477	29961
rejected %	4%	4%	4%

## 2.2 Compared Parameters

Parameter	Planned	Actual	Parameter	Planned	Actual
Instrument	HRC	HRC	Obspar format version number	7	7
Detector	HRC-S	HRC-S	Obspar file type	PREDICTED	ACTUAL
Grating	LETG	LETG	Obspar update status	NONE	UPDATED
Data mode	OBSERVING	OBSERVING			
Observation mode	POINTING	POINTING			
[deg] Pointing RA	267.540980	267.5544380106298			
[deg] Pointing Dec	-6.687290	-6.712549493079263			
[deg] Pointing Roll	264.998369	265.0672571538878			
[mm] SIM focus pos	-1.429586	-1.428180813131781			
[mm] SIM defocus	0.1037507710433287	0.1051558262725154			
[mm] SIM translation stage pos	250.455976	250.466033080201			
[mm] SIM translation stage offset	0	-0.01005468664627074			
[s] Observation start time (MET)	274126585.184000	274125485.68923			
Observation start date	2006-09-08T18:15:20	2006-09-08T17:58:05			
[s] Observation end time (MET)	274144104.184000	274145774.54019			
Observation end date	2006-09-08T23:07:19	2006-09-08T23:36:14			

## 2.3 Aspect



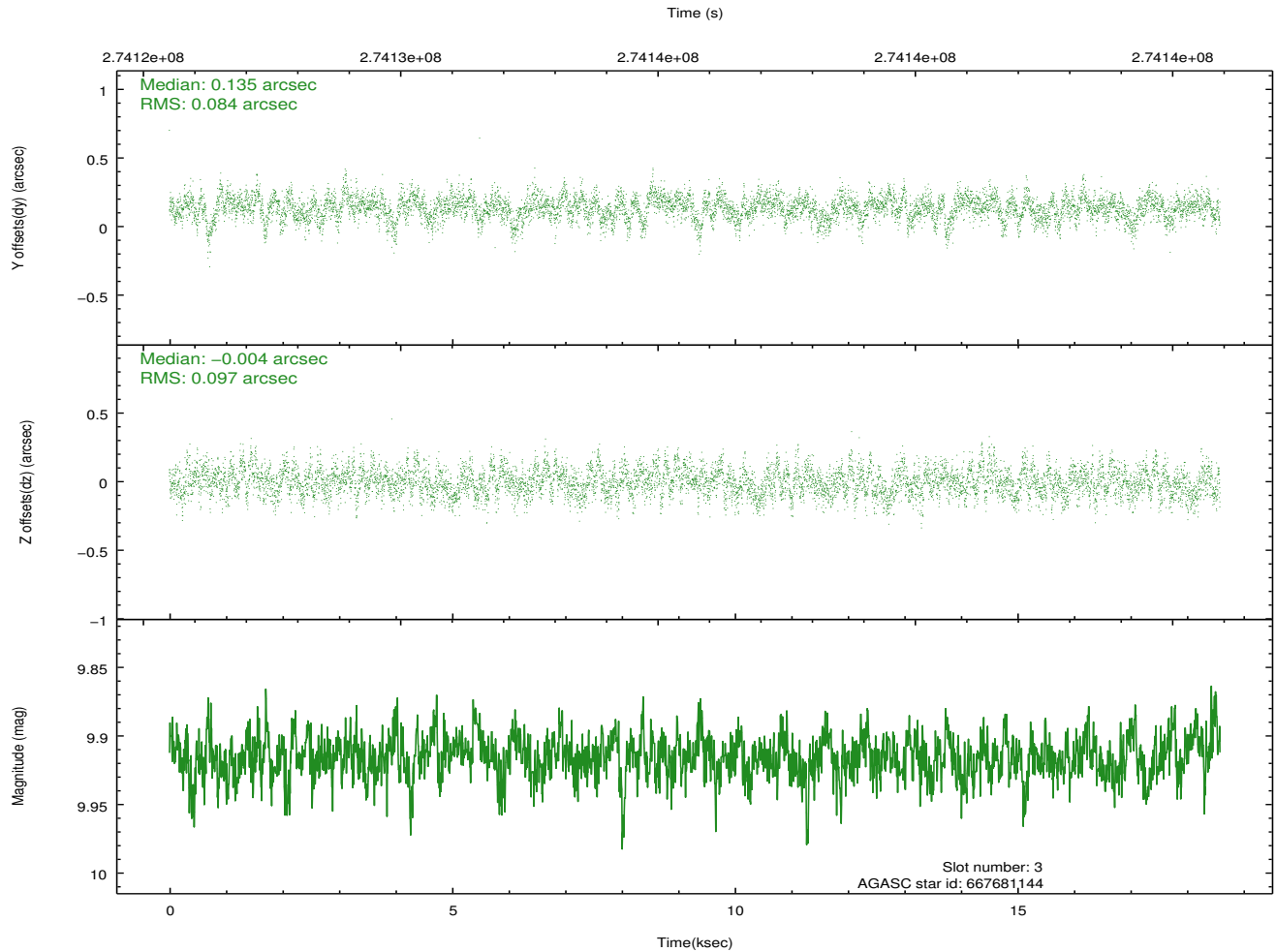
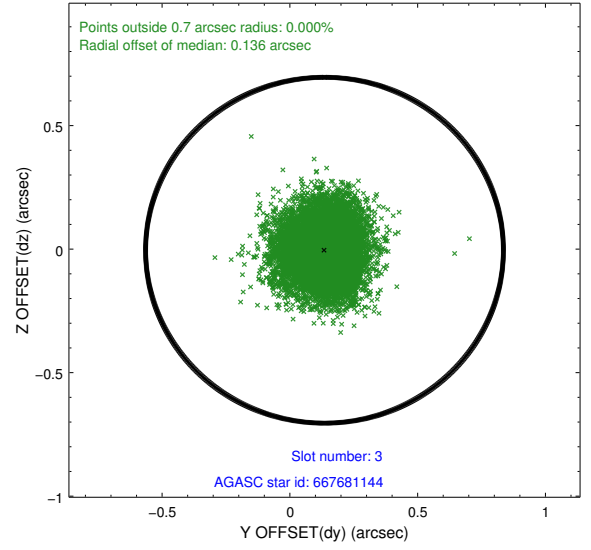
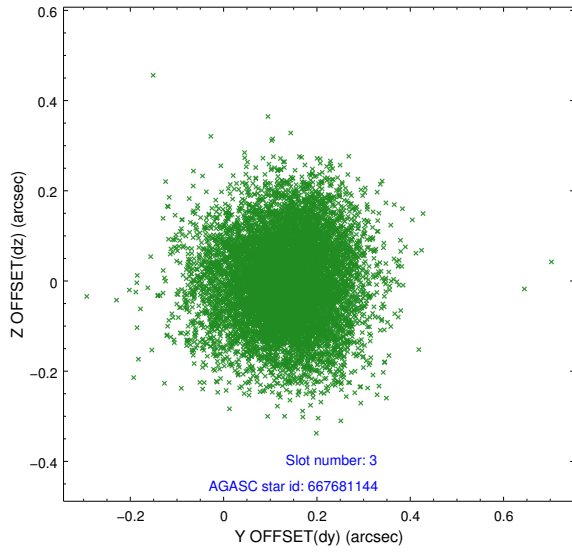


### Slot Statistics

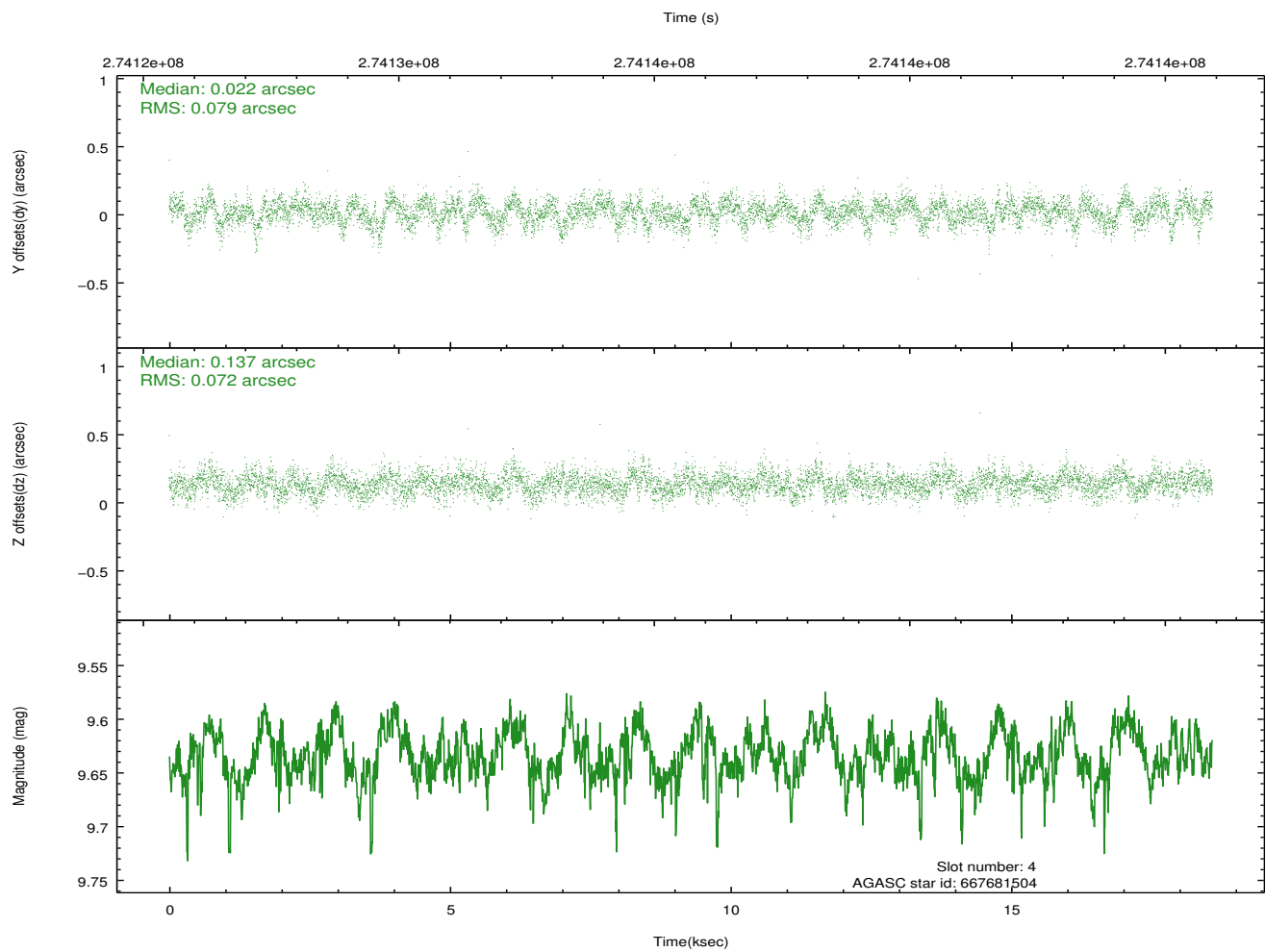
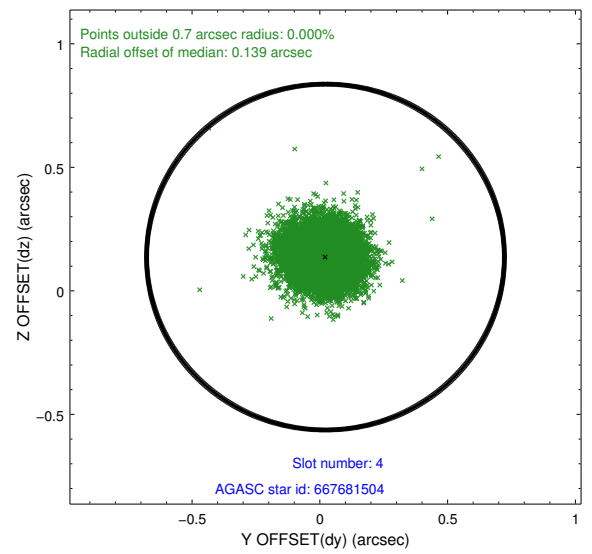
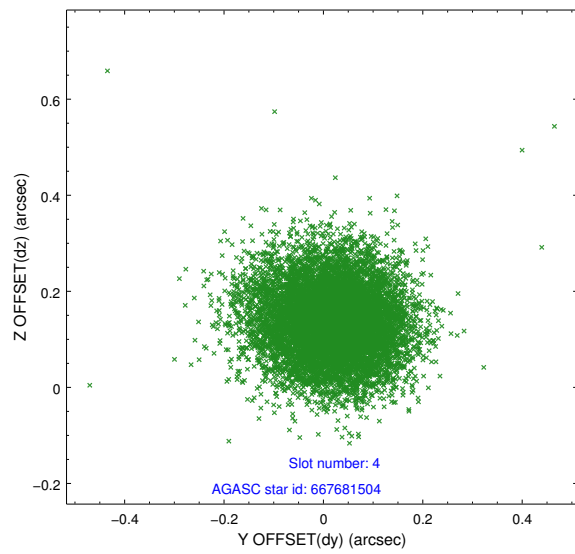
slot	status	id	mag	n_pts	med_dy	med_dz	dr1	dr2	ra	dec	mean_y	mean_z
0	FID	HRC-S-2	7.06	4534	0.124	-0.089	0.036	0.067	0.000000	0.000000	1237.11	-454.04
1	FID	HRC-S-3	7.08	4533	0.041	-0.103	0.018	0.030	0.000000	0.000000	-1165.08	568.08
2	FID	HRC-S-4	7.04	4534	0.245	-0.101	0.043	0.065	0.000000	0.000000	1235.57	570.83
3	GUIDE	667681144	9.92	9059	0.135	-0.004	0.136	0.222	267.013326	-6.291734	-1252.26	-2004.70
4	GUIDE	667681504	9.63	9046	0.022	0.137	0.113	0.184	267.752861	-6.895149	680.24	820.46
5	GUIDE	667683168	9.37	9062	0.215	0.030	0.095	0.155	267.624316	-7.281951	2107.67	483.73
6	GUIDE	667683800	8.86	9061	-0.158	-0.169	0.093	0.148	266.906535	-6.565778	-235.81	-2298.12
7	GUIDE	667681872	9.46	9041	-0.208	0.008	0.103	0.168	267.641810	-6.050285	-2314.78	159.62

## 2.4 Star Slots

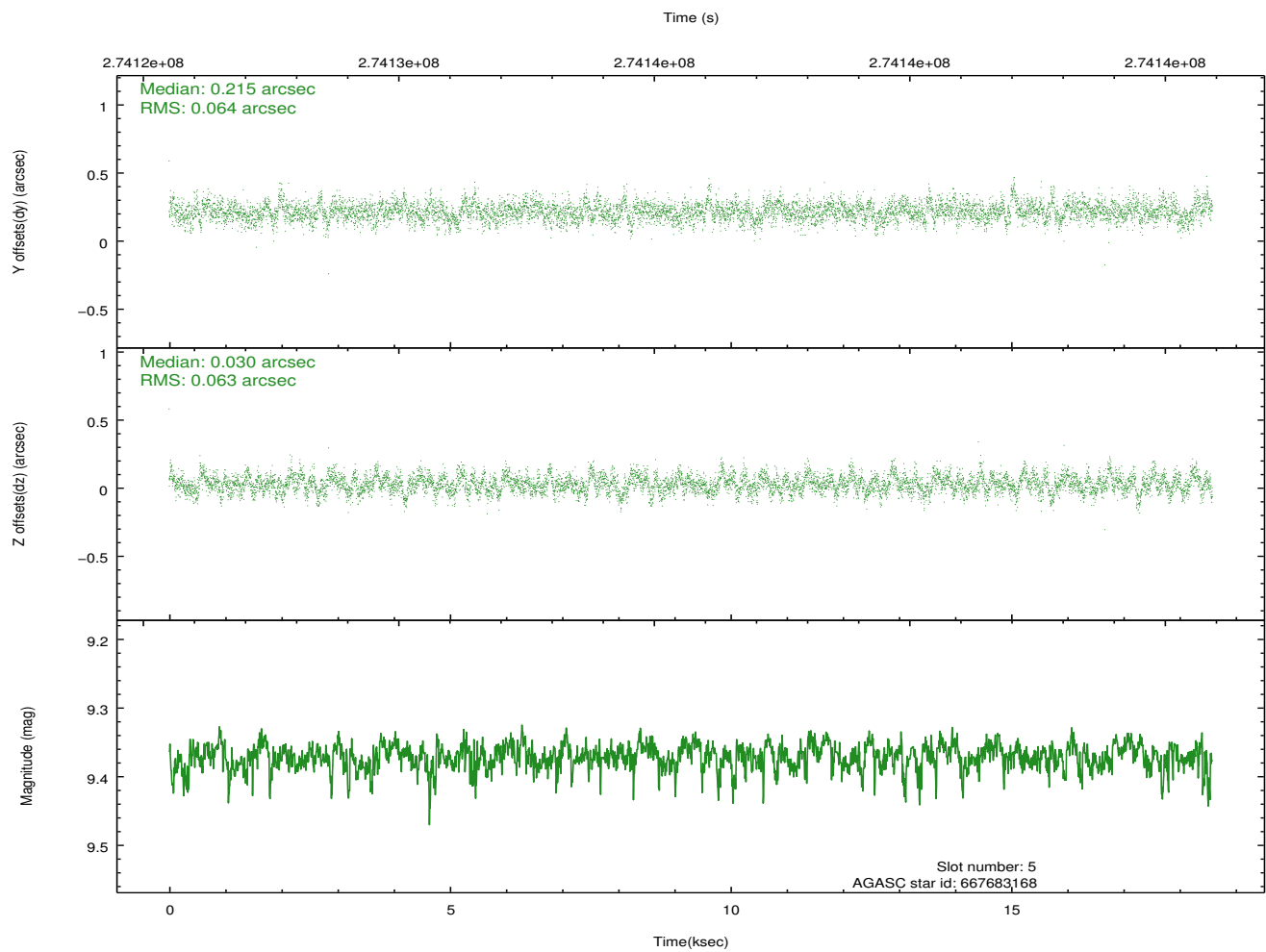
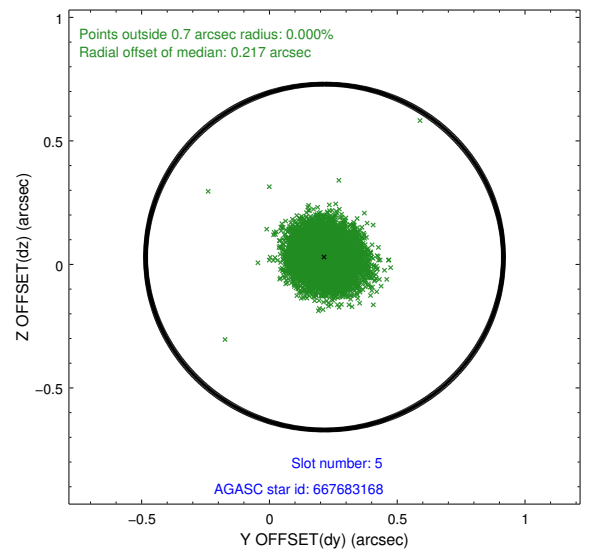
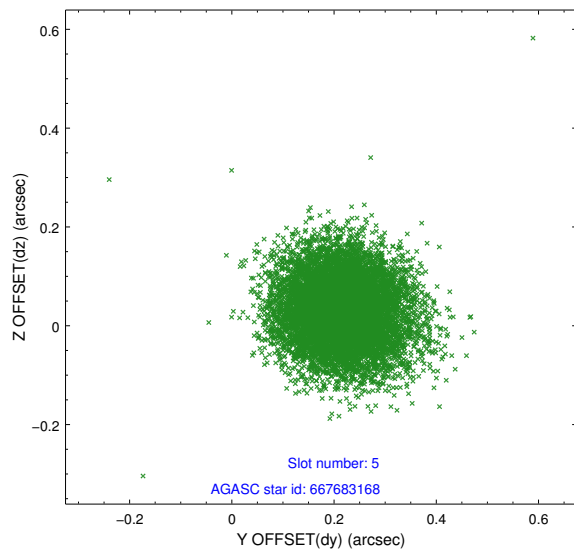
### 2.4.1 Slot 3



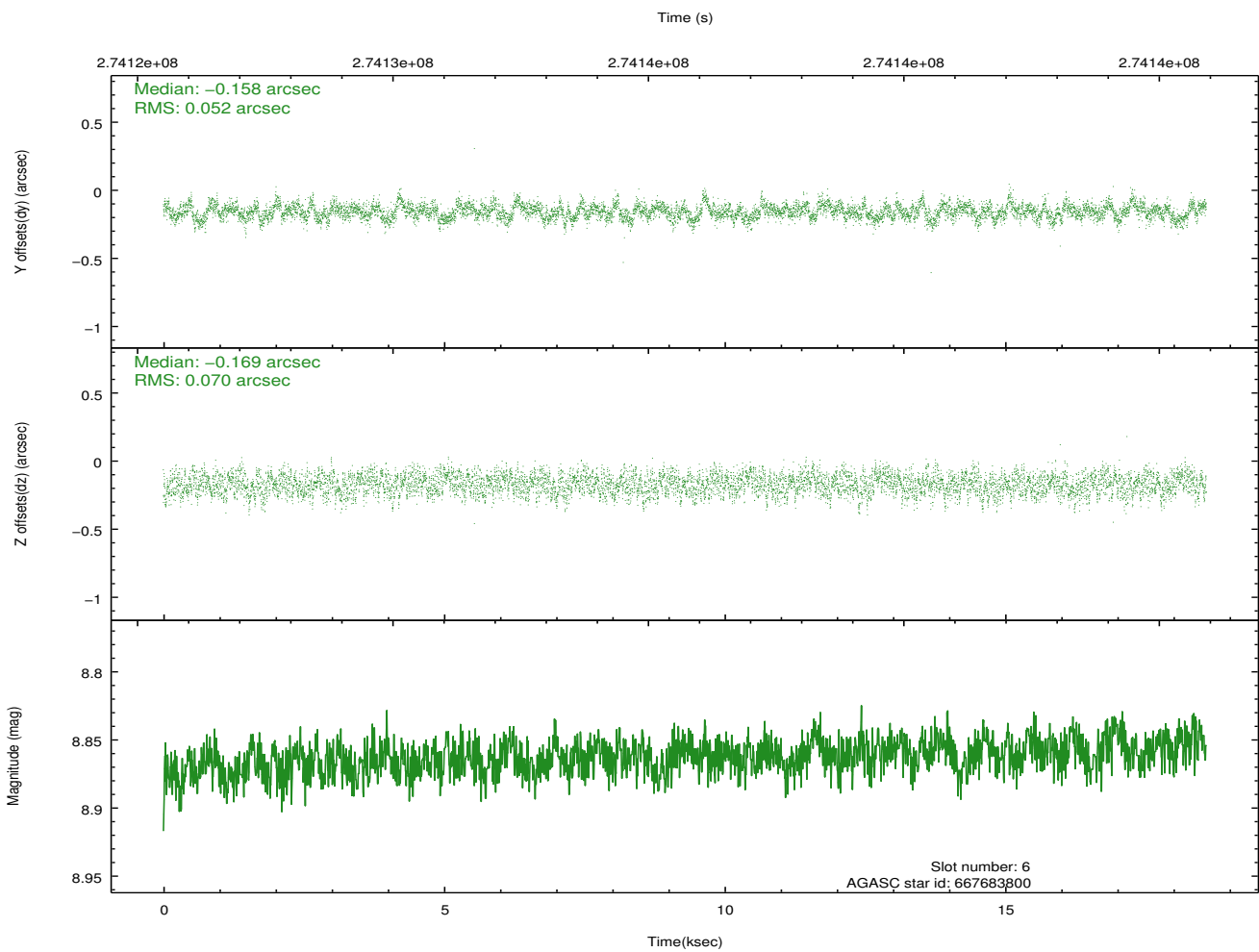
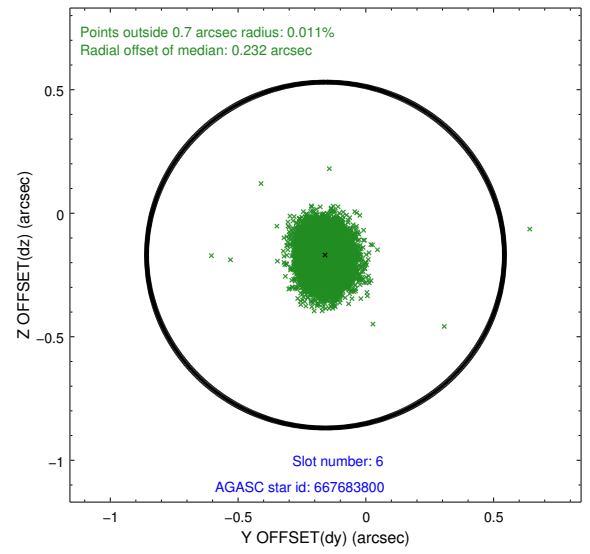
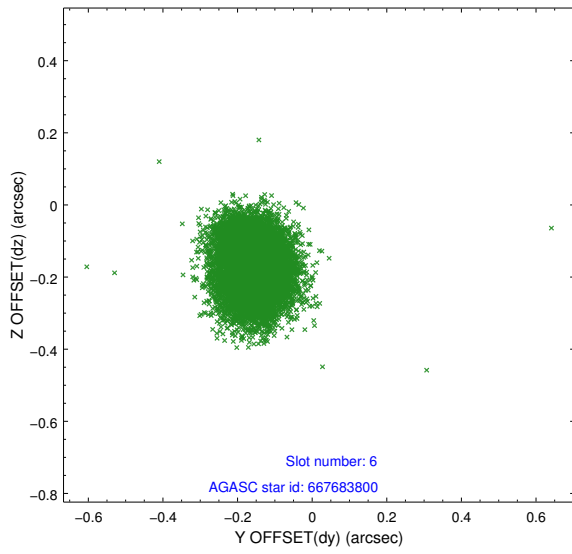
## 2.4.2 Slot 4



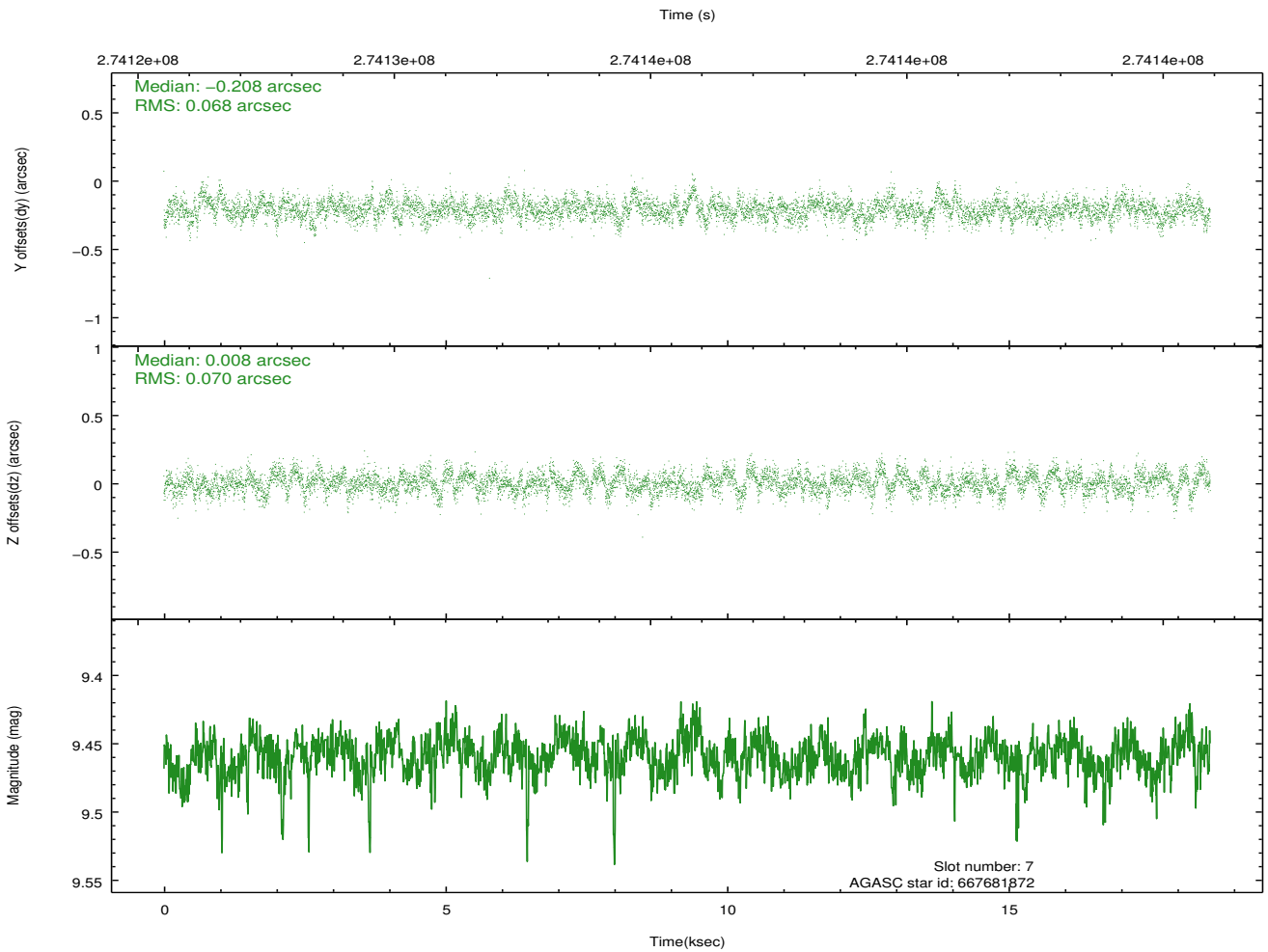
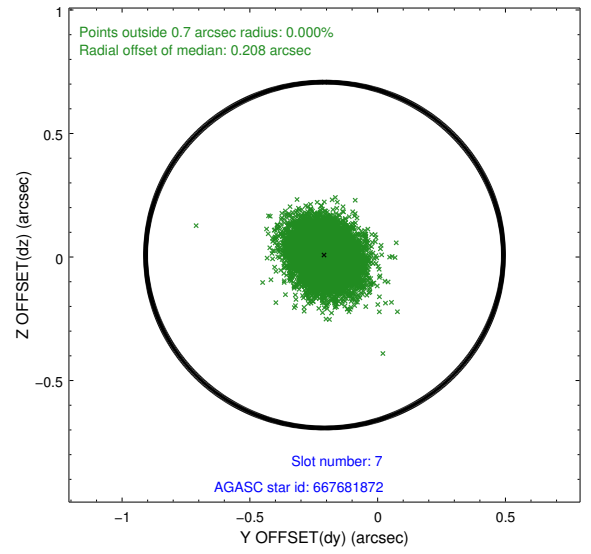
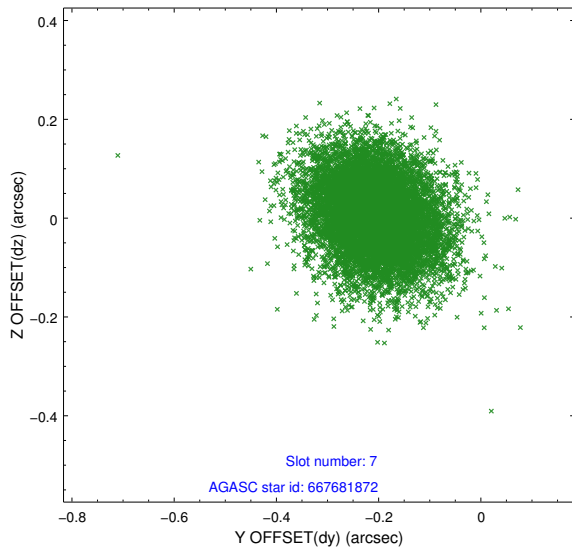
### 2.4.3 Slot 5



## 2.4.4 Slot 6

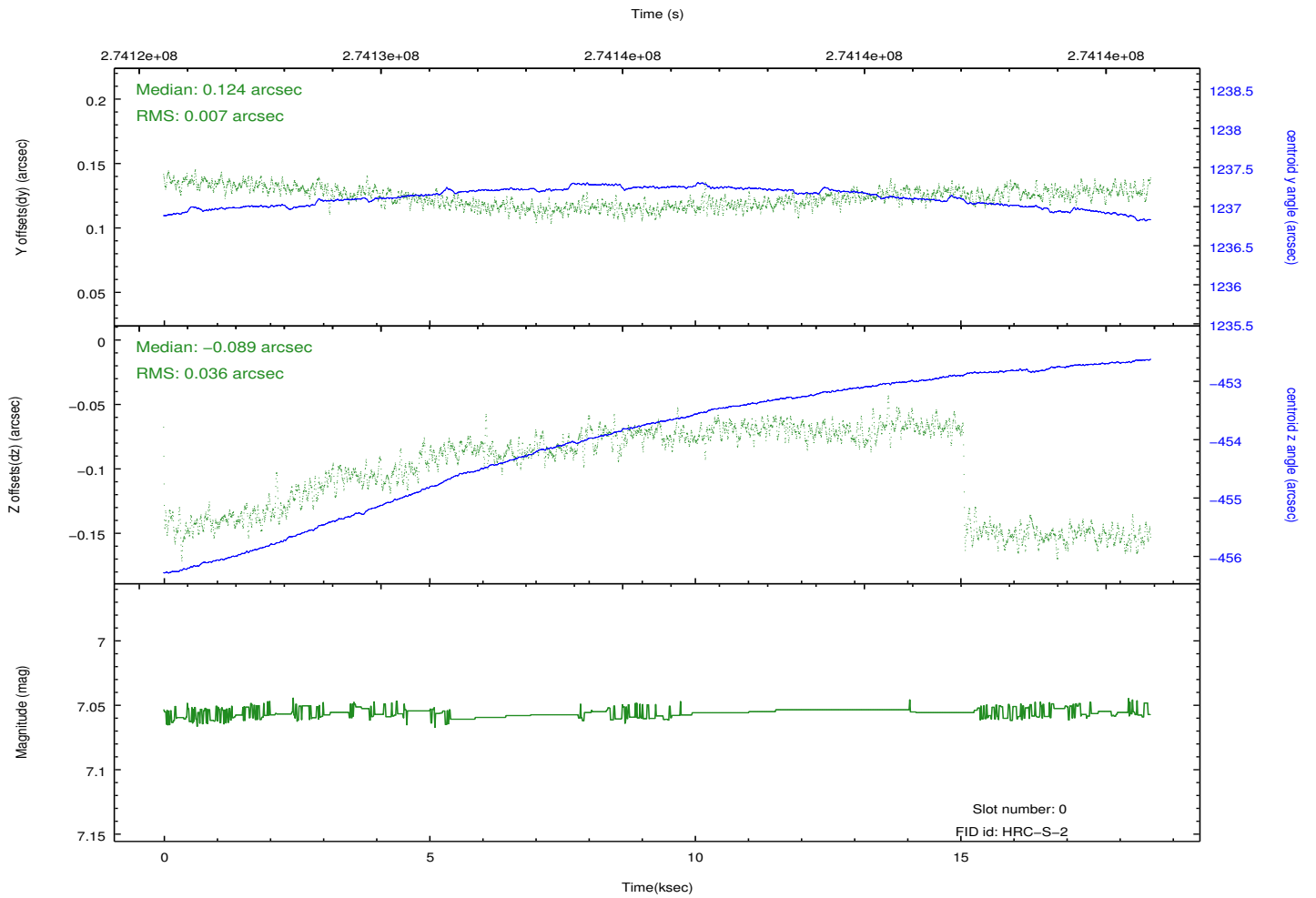
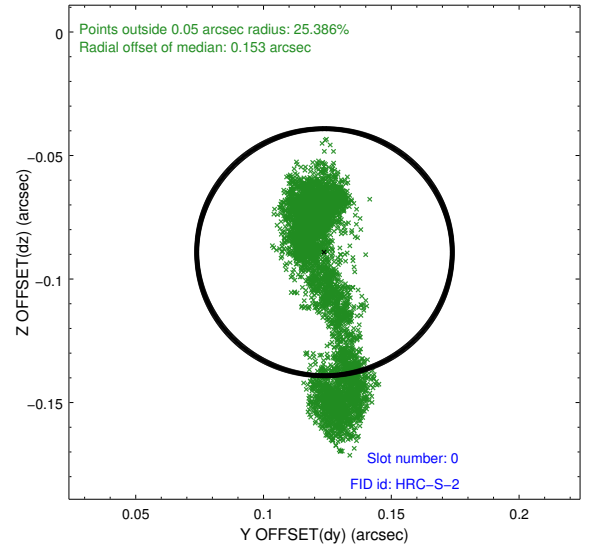
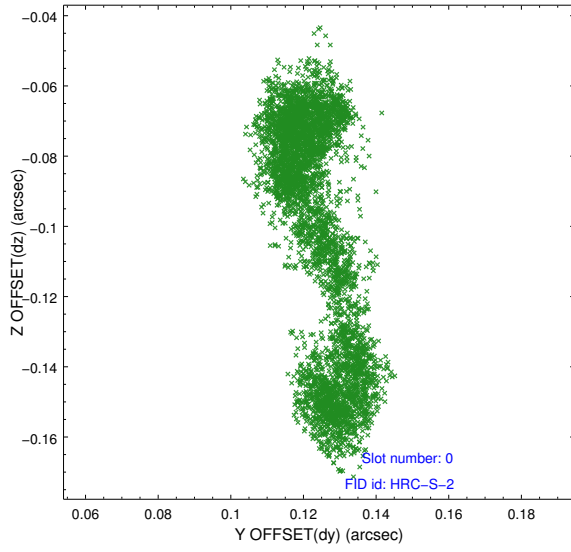


### 2.4.5 Slot 7

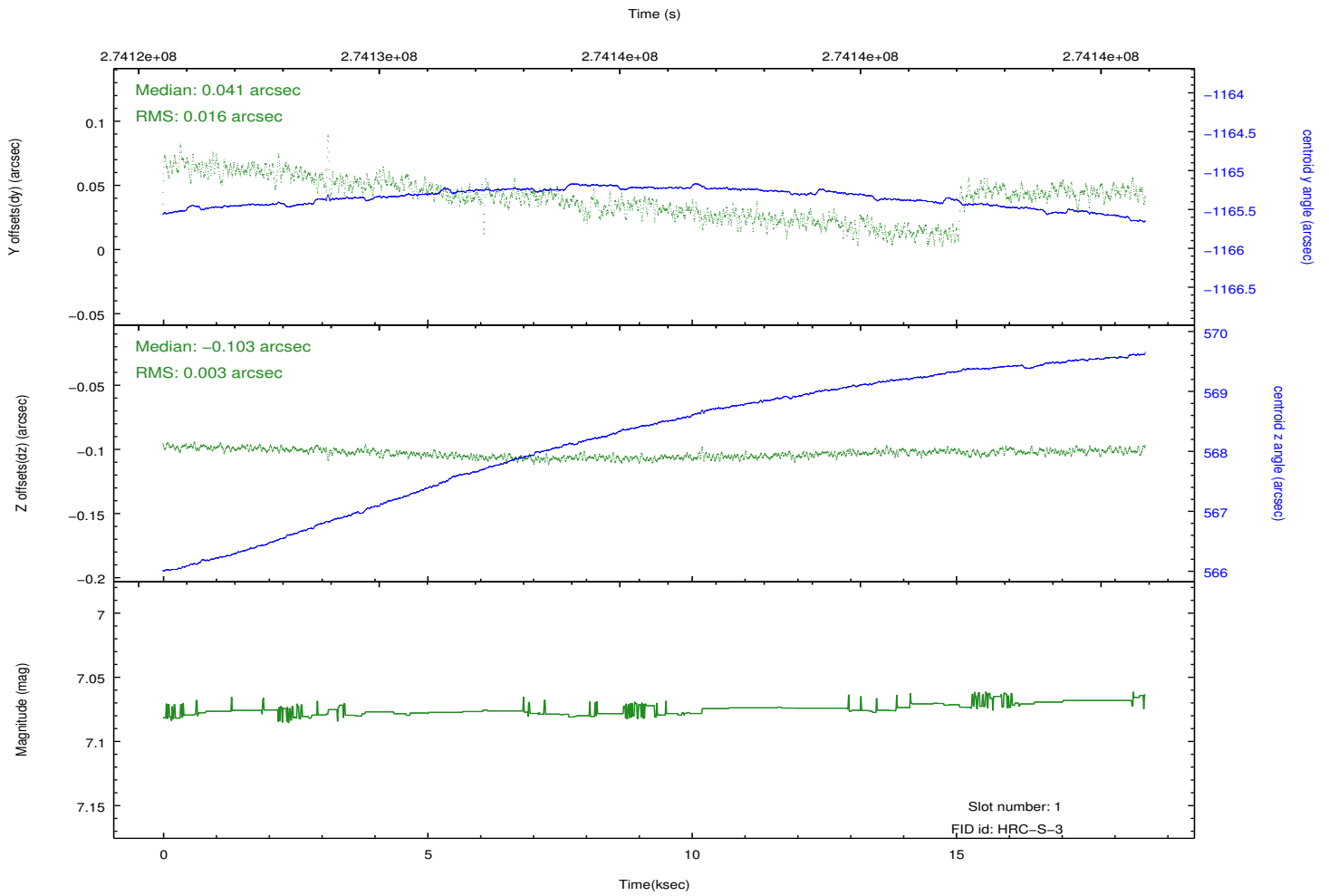
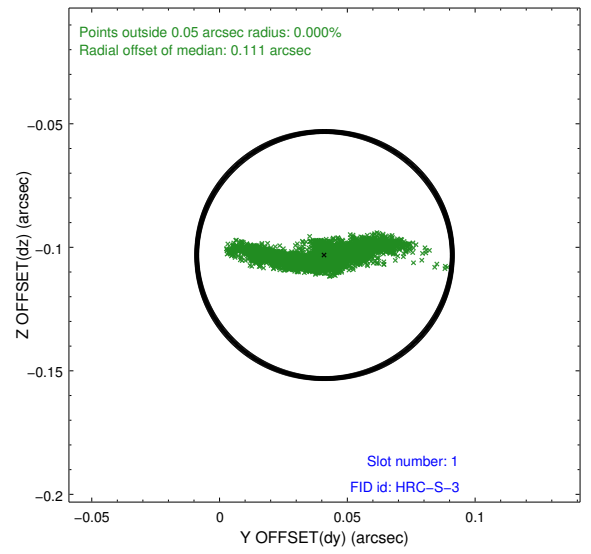
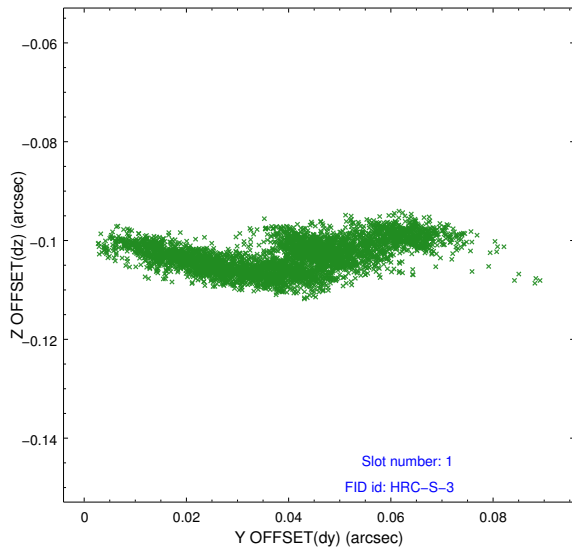


## 2.5 FID Slots

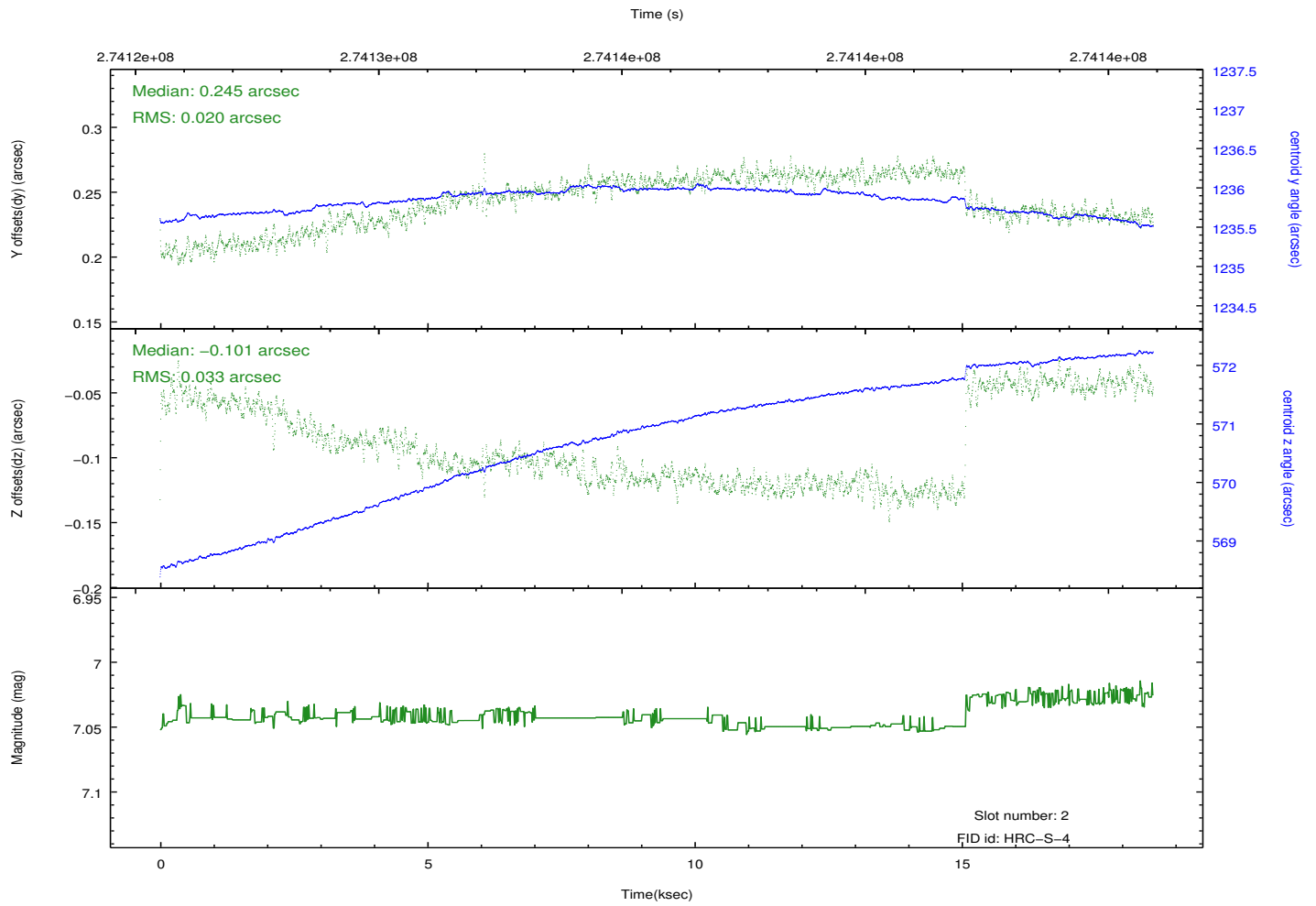
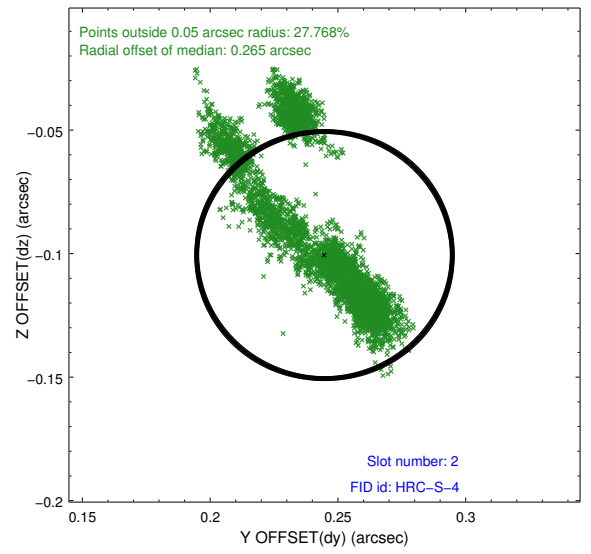
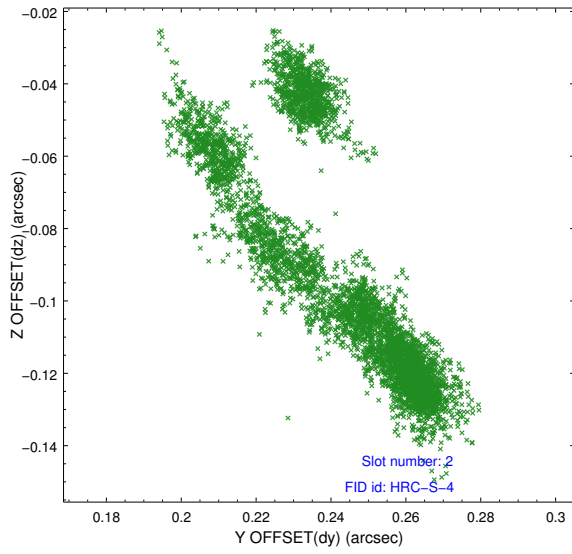
### 2.5.1 Slot 0



## 2.5.2 Slot 1

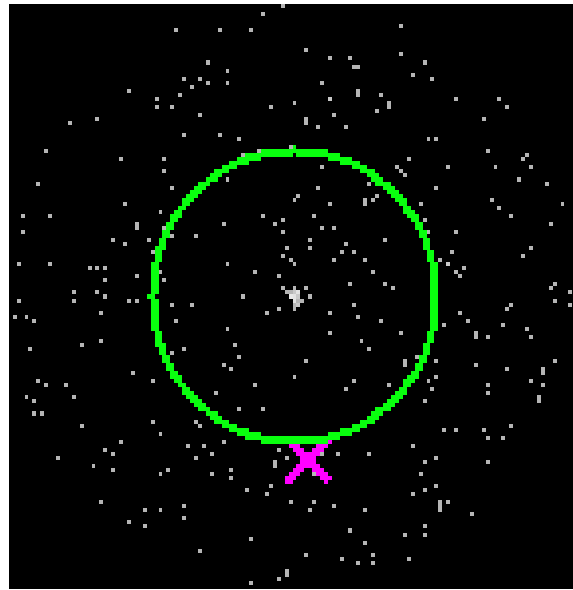


### 2.5.3 Slot 2

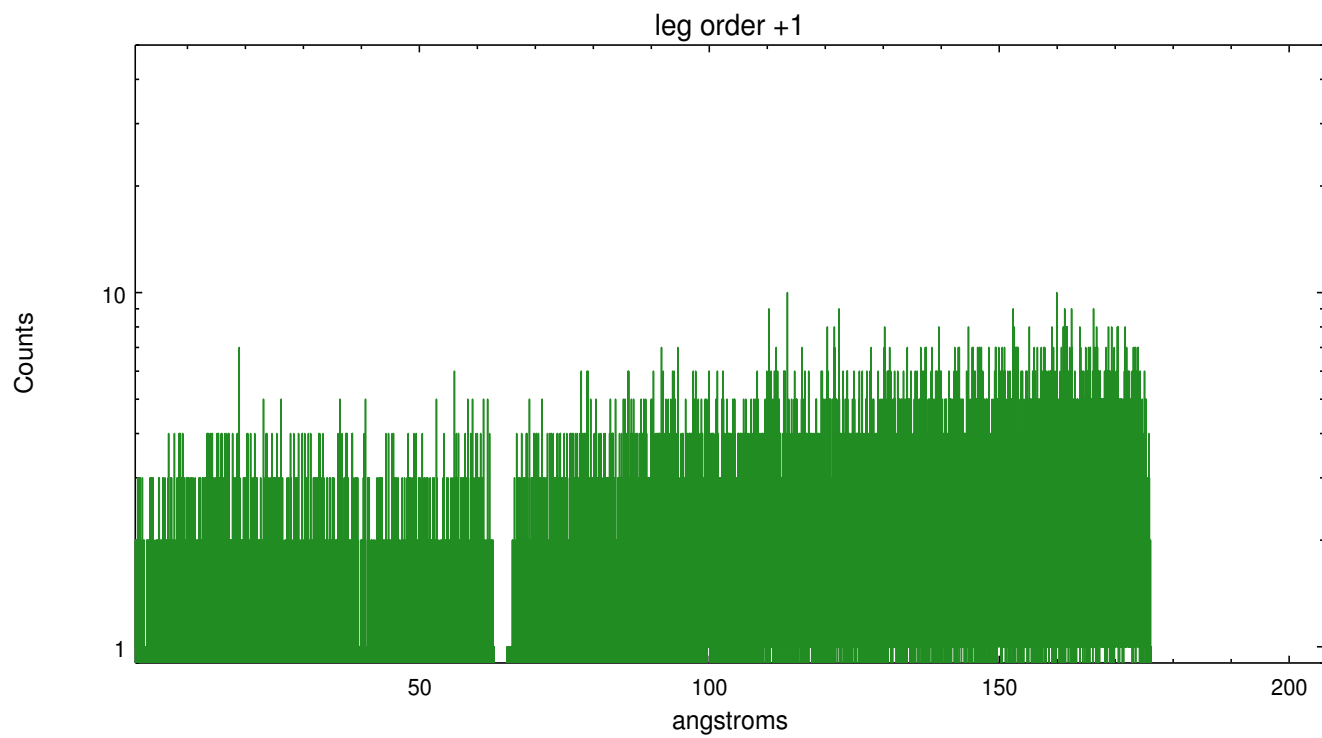
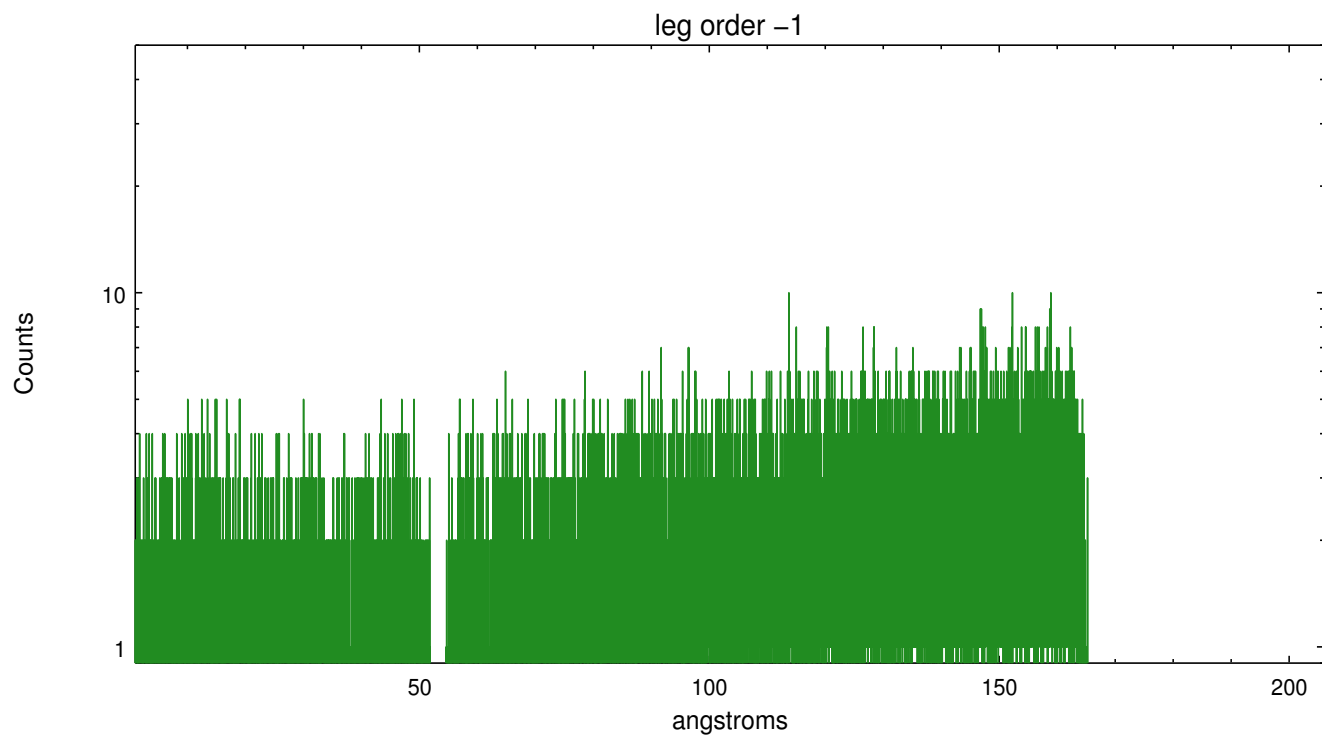


### 3 Gratings

#### 3.1 LETG Arm



LETG Zero Order



## A Summary

### A.1 Status

V&V Scientist	Joy Nichols
V&V Date (YYYY-MM-DD)	2012.08.17
V&V Edition	1
V&V Disposition and Status	OK
V&V Charge Time	18.0853571

### A.2 Comments