

V&V Reference Report

L2 ASCDS Version : 8.4.4

Observation 7413 - L2 Version 2
Chandra X-Ray Center

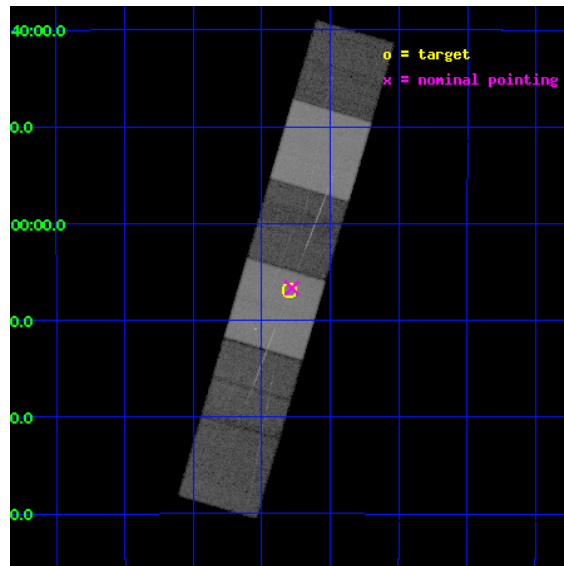
L2 Processing Date : Apr 27 2012

Contents

1	Front	2
2	OBI	3
2.1	OBI	3
2.1.1	Images	3
2.1.2	Bias	3
2.1.3	Parameters	4
2.1.4	Events	4
2.2	Compared Parameters	5
2.3	Aspect	6
2.4	Star Slots	9
2.4.1	Slot 3	9
2.4.2	Slot 4	10
2.4.3	Slot 5	11
2.4.4	Slot 6	12
2.4.5	Slot 7	13
2.5	FID Slots	14
2.5.1	Slot 0	14
2.5.2	Slot 1	15
2.5.3	Slot 2	16
3	Gratings	17
3.1	HEG Arm	17
3.2	MEG Arm	19
A	Summary	21
A.1	Status	21
A.2	Comments	21

1 Front

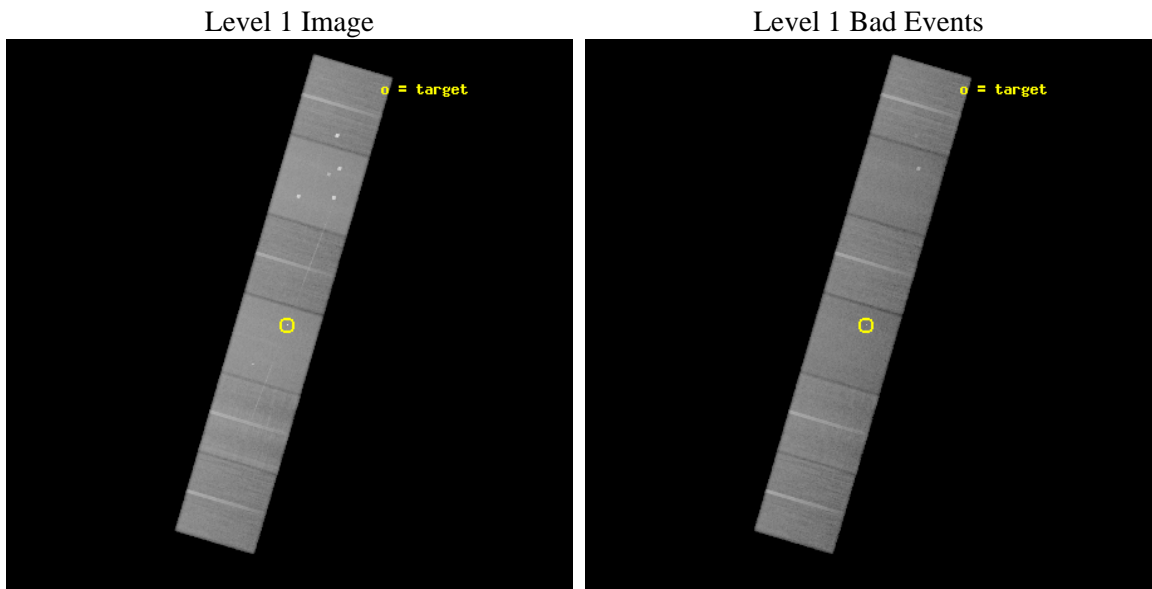
seq_num	200426	Sequence number
obs_id	7413	Observation id
title	THE FASTEST CORONA IN TOWN	Proposal title
observer	Dr. Jeremy Drake	Principal investigator
object	HD 199143	Source name
dtycycle	0	
cycle	P	events from which exps? Prim/Second/Both
ra_targ	313.94875	Observer's specified target RA [deg]
dec_targ	-17.114167	Observer's specified target Dec [deg]
ra_nom	313.94497287594	Nominal RA [deg]
dec_nom	-17.110933909864	Nominal Dec [deg]
roll_nom	106.37551335649	Nominal Roll [deg]
revision	2	Processing version of data
ontime	37289.599861145	Sum of GTIs [s]
livetime	36817.416494602	Livetime [s]
ontime4	37289.599861145	Sum of GTIs [s]
ontime5	37289.599861145	Sum of GTIs [s]
ontime6	37289.599861145	Sum of GTIs [s]
ontime7	37289.599861145	Sum of GTIs [s]
ontime8	37286.358900428	Sum of GTIs [s]
ontime9	37286.358840883	Sum of GTIs [s]
l2events	610790	Number of level 2 events



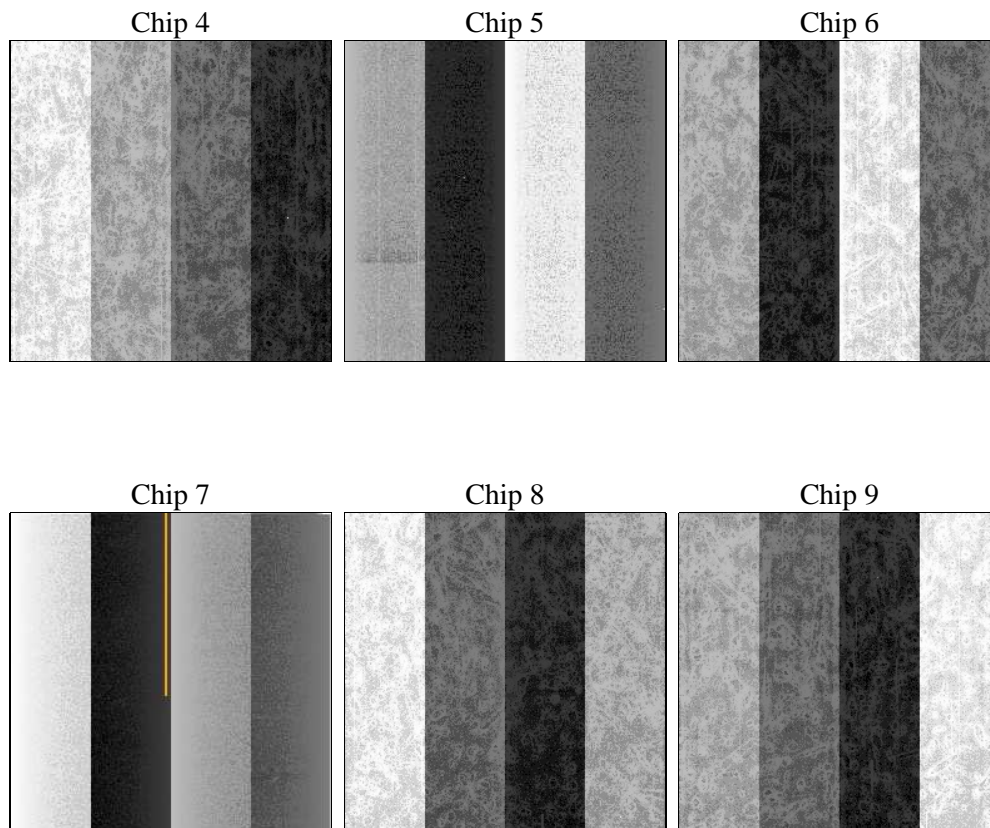
2 OBI

2.1 OBI

2.1.1 Images



2.1.2 Bias



2.1.3 Parameters

obi_num	0	Obi number	sched_exp_time	37342.361000	[s] Scheduled observation exposure time
ascdsver	8.4.4	Processing system revision	ontime	37289.599861145	Sum of GTIs [s]
caldbver	4.4.9	 	ontime4	37289.599861145	Sum of GTIs [s]
date	2012-04-27T03:12:49	Date and time of file creation	ontime5	37289.599861145	Sum of GTIs [s]
revision	2	Processing version of data	ontime6	37289.599861145	Sum of GTIs [s]
			ontime7	37289.599861145	Sum of GTIs [s]
			ontime8	37286.358900428	Sum of GTIs [s]
			ontime9	37286.358840883	Sum of GTIs [s]
			l1events	2681515	Number of level 1 events

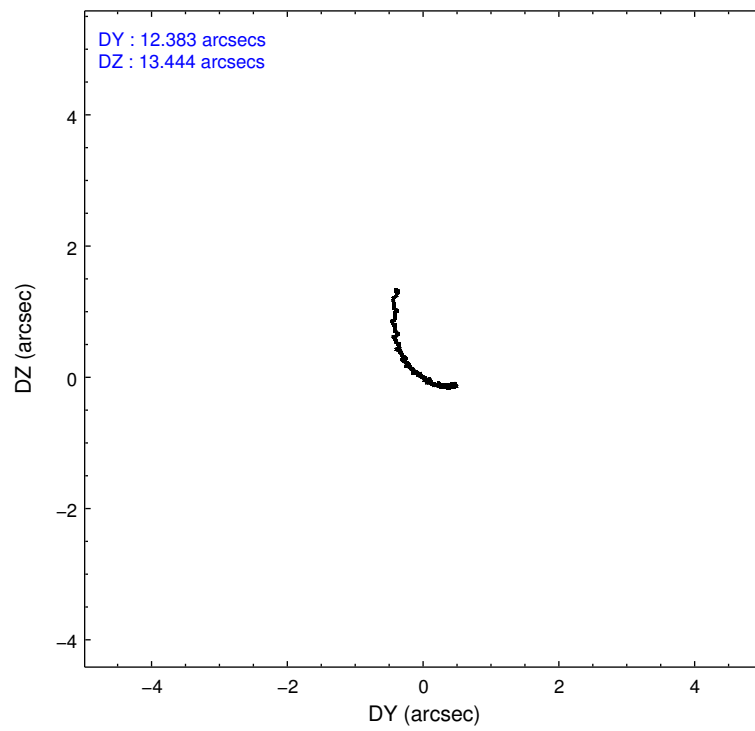
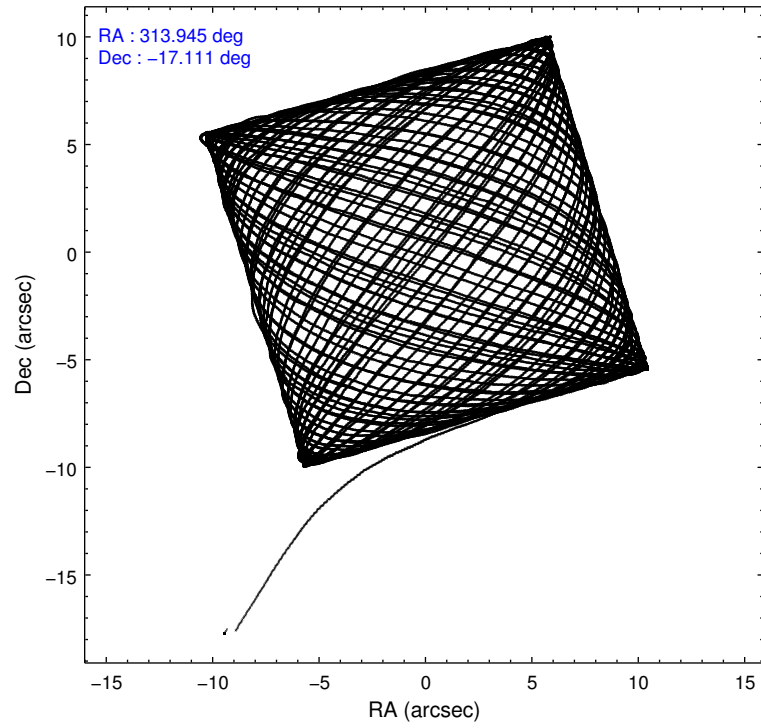
2.1.4 Events

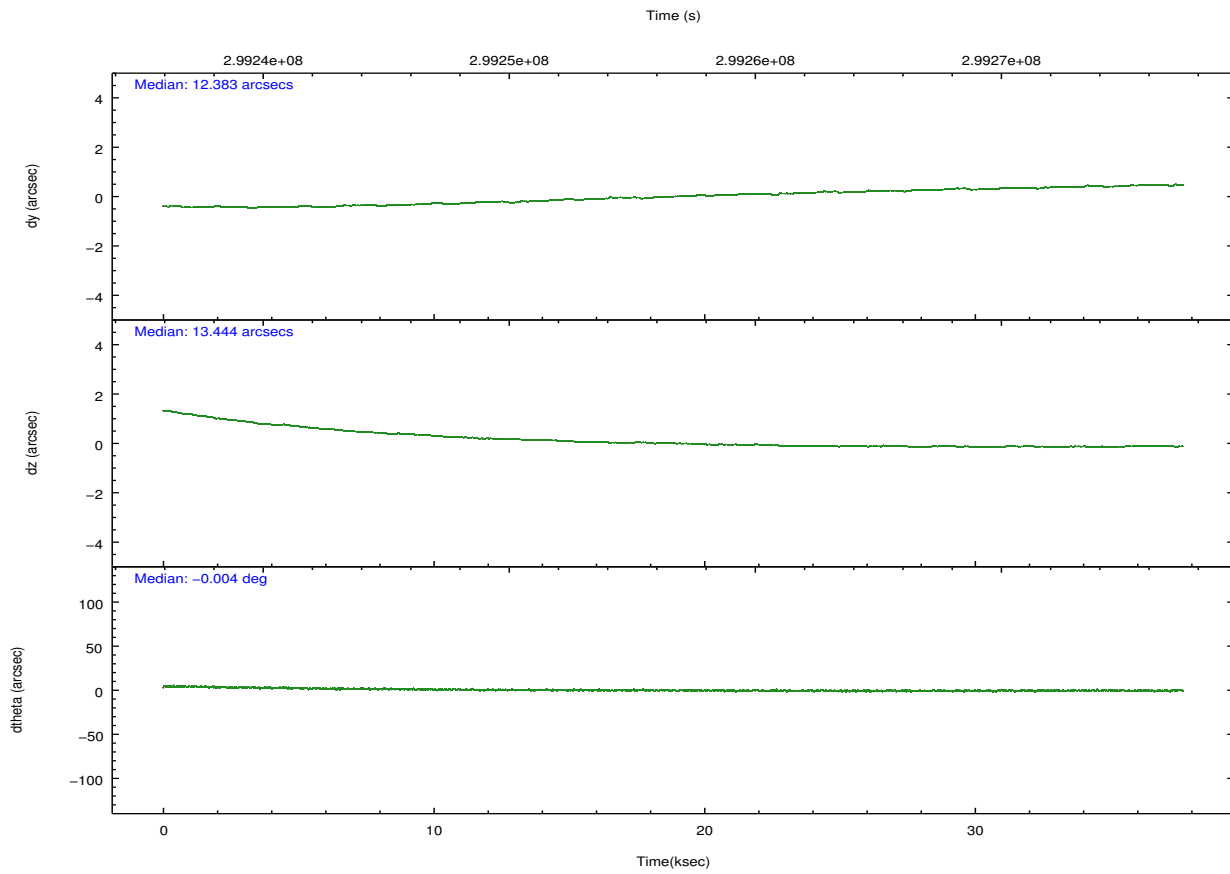
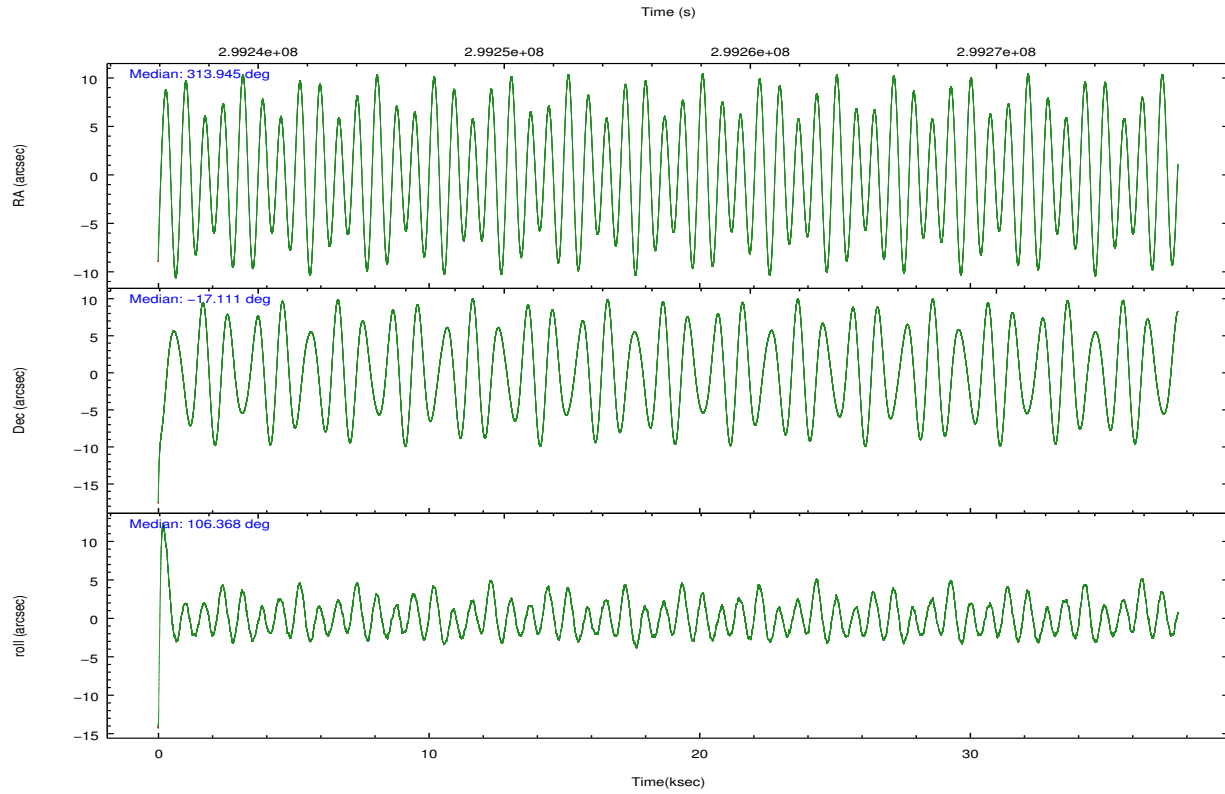
	ccd 4	ccd 5	ccd 6	ccd 7	ccd 8	ccd 9		ccd 4	ccd 5	ccd 6	ccd 7	ccd 8	ccd 9
level 1 events	411147	568540	371882	505120	464412	360414	grade 0 events	30292	35225	19556	19555	34575	18784
rejected events	355561	298518	325485	291044	358623	315636		7%	6%	5%	3%	7%	5%
rejected %	86%	52%	87%	57%	77%	87%	grade 1 events	500	809	211	577	413	229
								0%	0%	0%	0%	0%	0%
							grade 2 events	9479	81844	9769	43990	23529	8932
								2%	14%	2%	8%	5%	2%
							grade 3 events	4446	9116	4169	18505	10779	4318
								1%	1%	1%	3%	2%	1%
							grade 4 events	4295	8938	4129	18499	10085	4114
								1%	1%	1%	3%	2%	1%
							grade 5 events	16031	38789	16959	47526	23053	18009
								3%	6%	4%	9%	4%	4%
							grade 6 events	7078	134924	8779	113544	26822	8634
								1%	23%	2%	22%	5%	2%
							grade 7 events	339026	258895	308310	242924	335156	297394
								82%	45%	82%	48%	72%	82%

2.2 Compared Parameters

Parameter	Planned	Actual	Parameter	Planned	Actual
Instrument	ACIS	ACIS	Obspar format version number	7	7
Detector	ACIS-456789	ACIS-456789	Obspar file type	PREDICTED	ACTUAL
Grating	HETG	HETG	Obspar update status	NONE	UPDATED
Data mode	FAINT	FAINT	Number of optional ACIS chips dropped	0	0
Observation mode	POINTING	POINTING	On-chip summing requested	N	N
[deg] Pointing RA	313.965960	313.9449728759371	Subarray requested	NONE	NONE
[deg] Pointing Dec	-17.129519	-17.11093390986379	Alternating exposures requested	N	N
[deg] Pointing Roll	106.225069	106.3755133564866	[s] Primary exposure time	0.000000	3.2
[mm] SIM focus pos	-0.684267	-0.6828225247311905			
[mm] SIM defocus	0	0.001444936568705701			
[mm] SIM translation stage pos	-187.132523	-187.1254020033014			
[mm] SIM translation stage offset	-3	-3.007120579706367			
[s] Observation start time (MET)	299238151.184000	299236961.36827			
Observation start date	2007-06-26T09:41:26	2007-06-26T09:22:41			
[s] Observation end time (MET)	299275493.184000	299275706.37012			
Observation end date	2007-06-26T20:03:48	2007-06-26T20:08:26			
Read mode	TIMED	TIMED			

2.3 Aspect



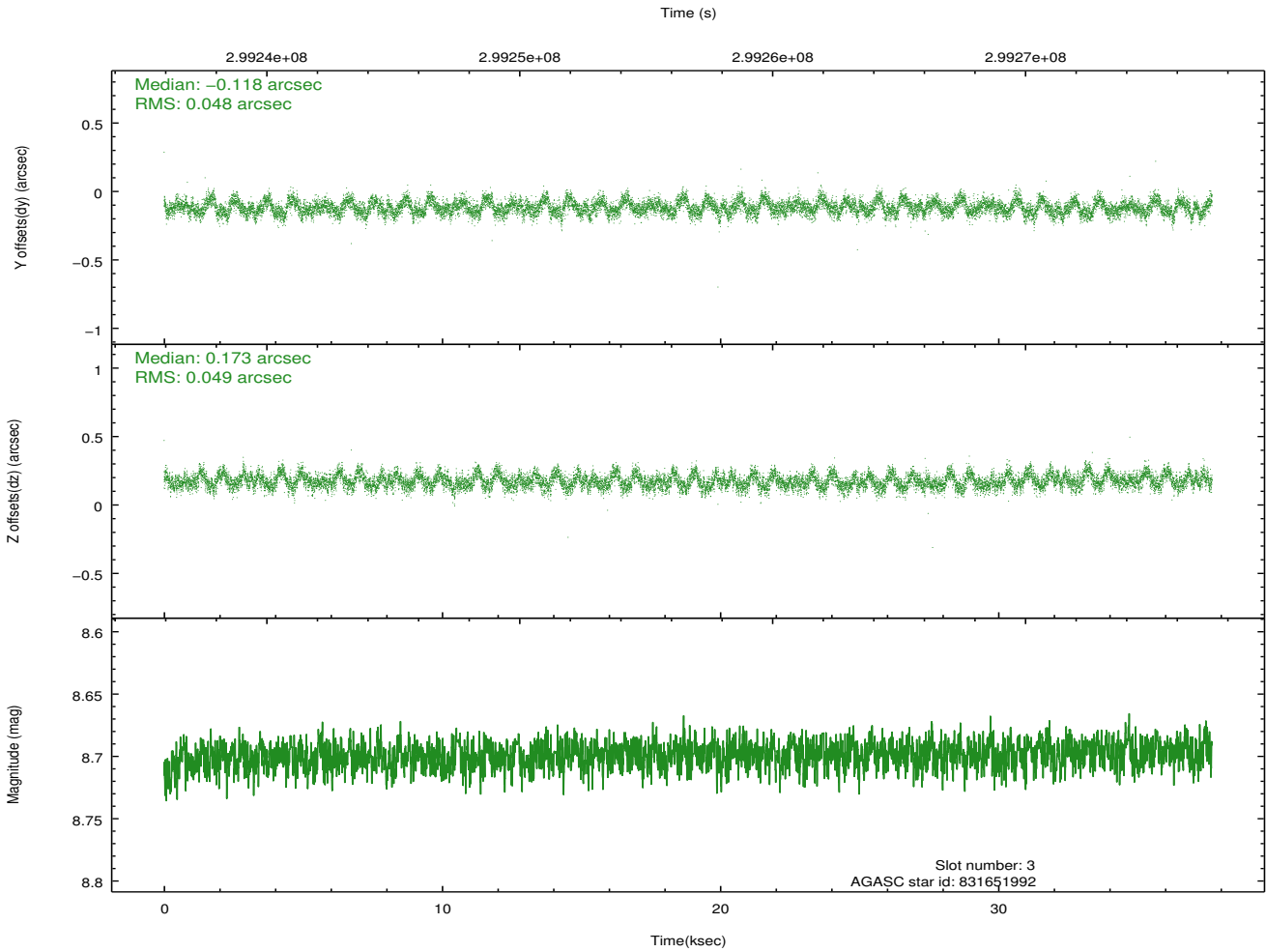
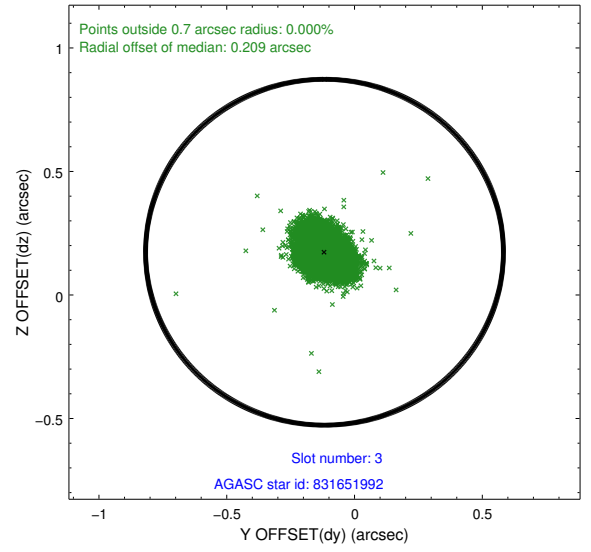
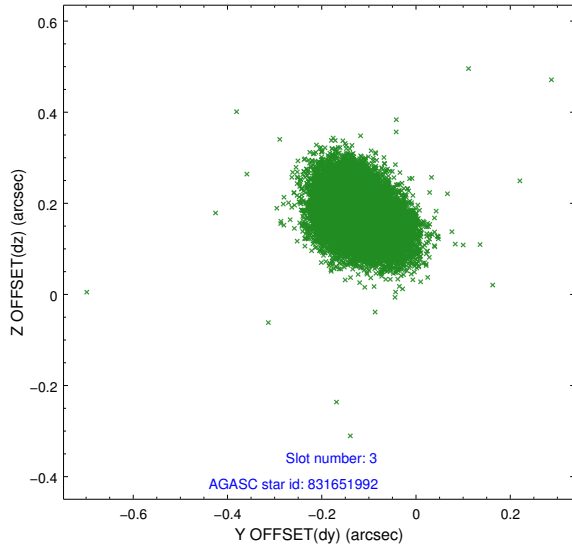


Slot Statistics

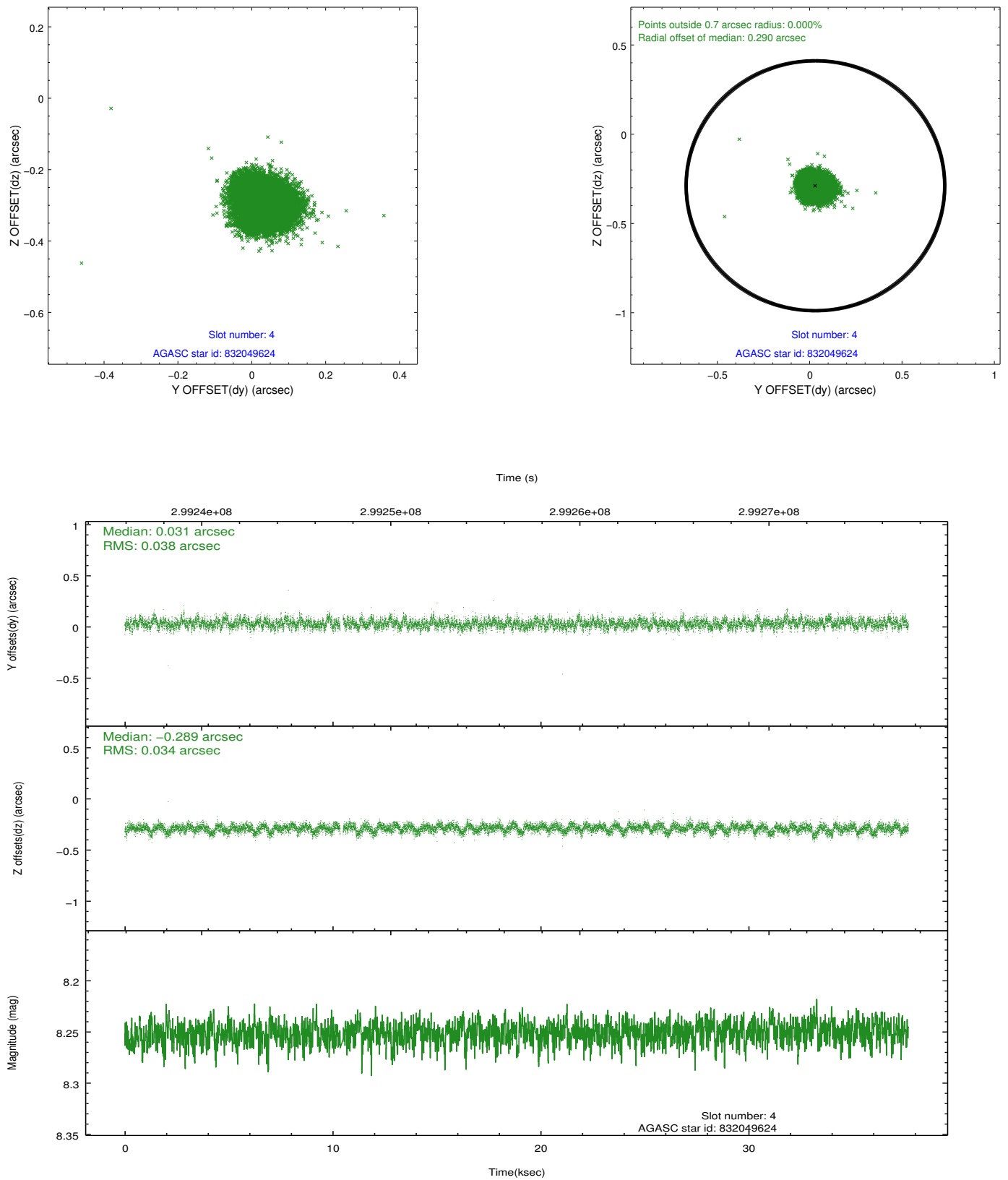
slot	status	id	mag	n_pts	med_dy	med_dz	dr1	dr2	ra	dec	mean_y	mean_z
0	FID	ACIS-S-2	7.09	9191	-0.023	-0.067	0.010	0.024	0.000000	0.000000	-765.10	-1797.10
1	FID	ACIS-S-5	7.23	9189	-0.071	0.004	0.011	0.023	0.000000	0.000000	-1818.26	104.92
2	FID	ACIS-S-6	7.36	9190	0.069	0.069	0.010	0.016	0.000000	0.000000	396.60	748.89
3	GUIDE	831651992	8.70	18365	-0.118	0.173	0.072	0.117	314.343778	-16.717315	1059.90	-1664.64
4	GUIDE	832049624	8.25	18305	0.031	-0.289	0.054	0.088	313.709394	-17.609757	-1414.54	1328.12
5	GUIDE	832177904	8.28	18375	0.089	0.188	0.073	0.116	314.235943	-17.517323	-1599.89	-499.52
6	GUIDE	832178120	7.39	18381	0.095	0.169	0.053	0.088	314.038930	-17.243135	-462.72	-126.39
7	GUIDE	832049944	8.77	18371	-0.101	-0.244	0.087	0.138	313.235077	-17.005516	1126.74	2292.22

2.4 Star Slots

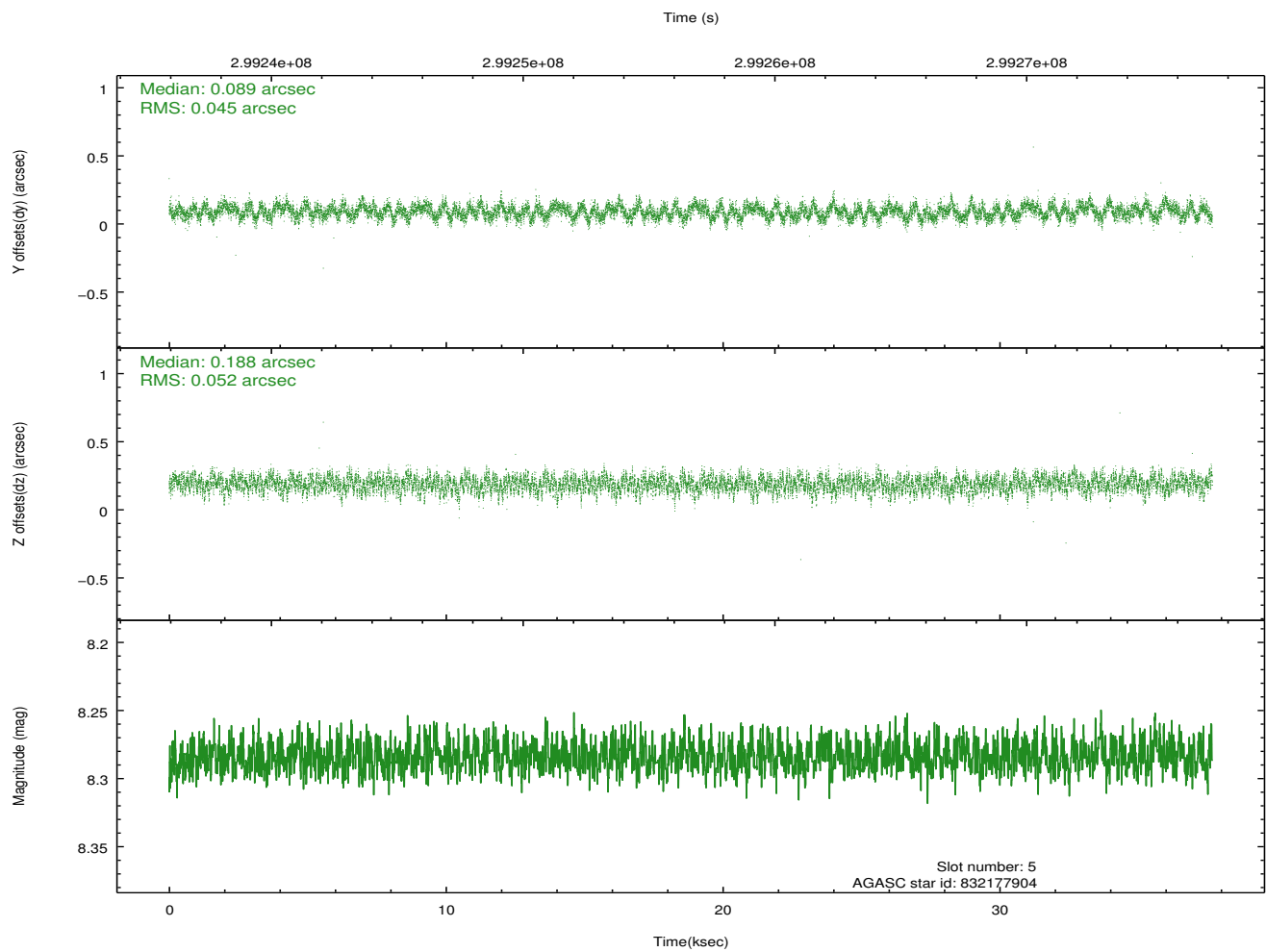
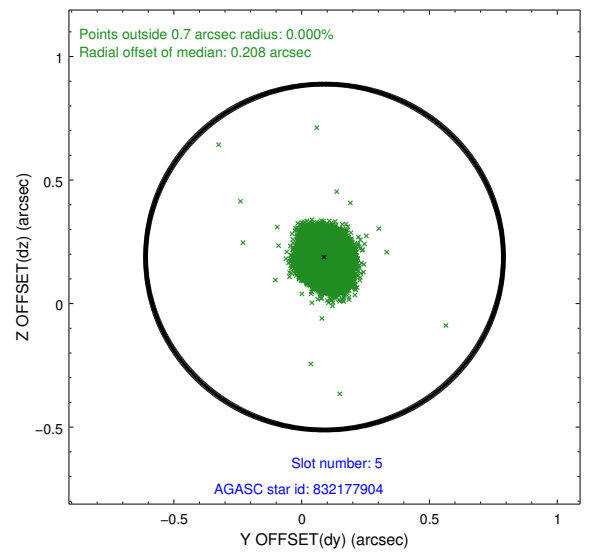
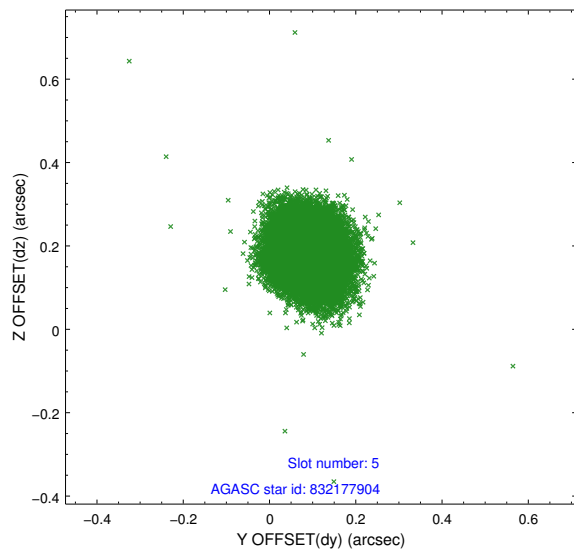
2.4.1 Slot 3



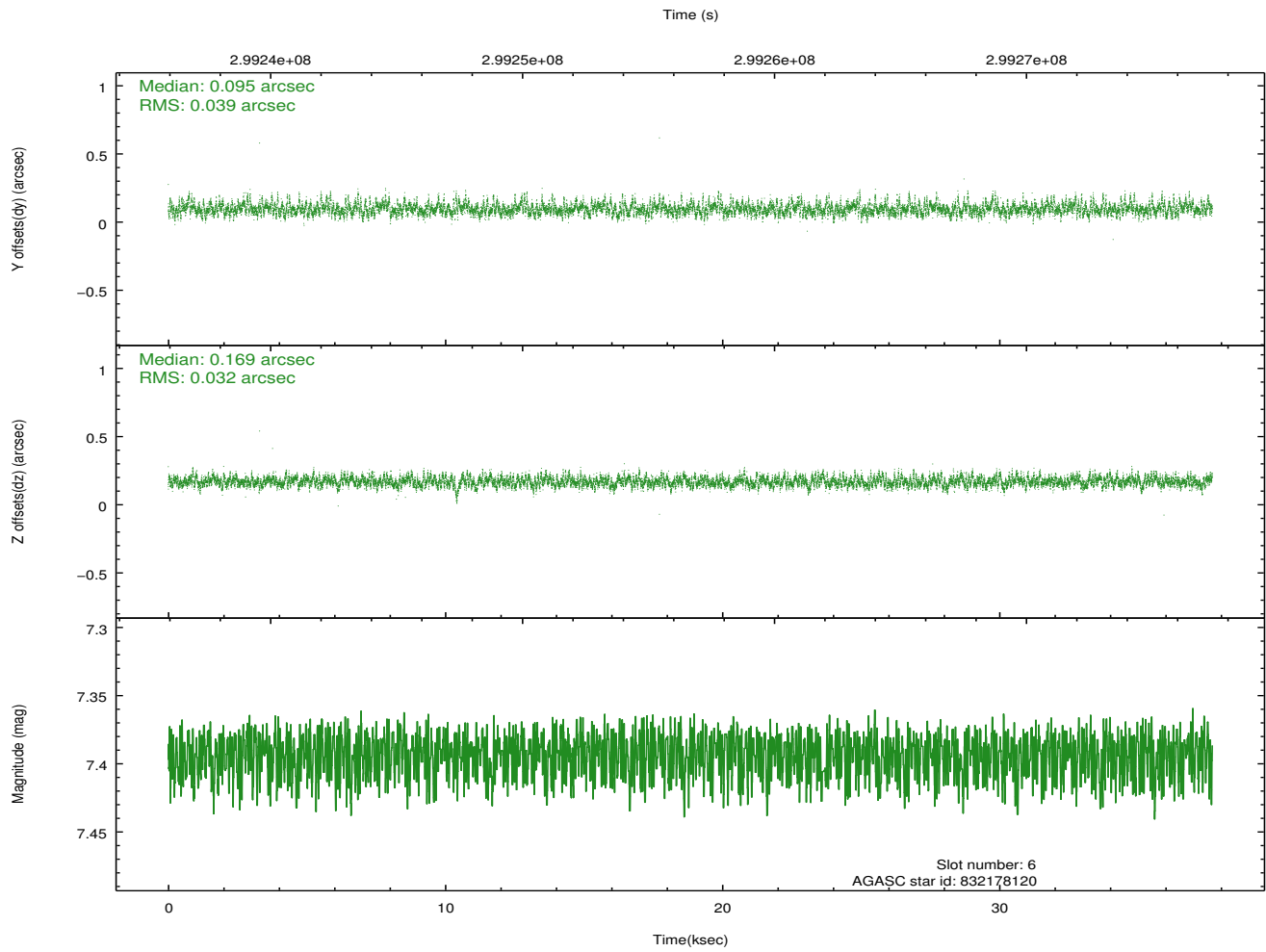
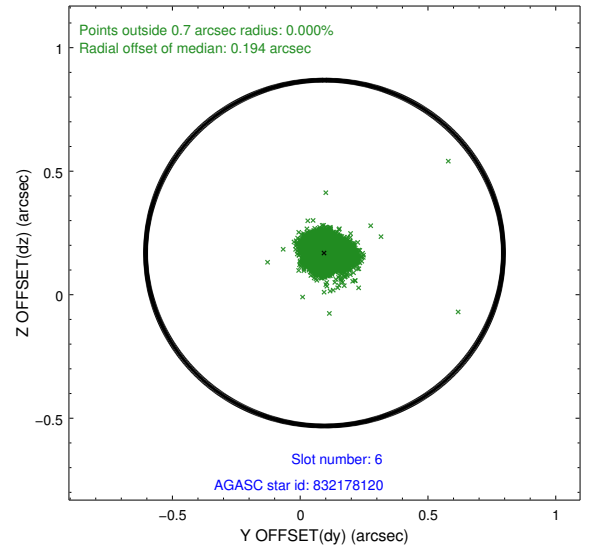
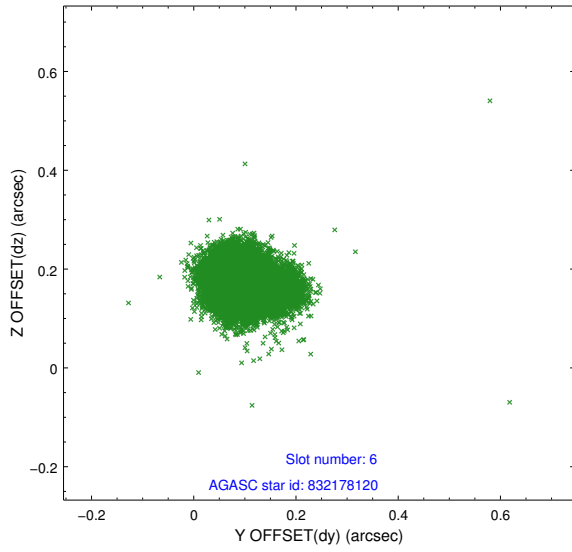
2.4.2 Slot 4



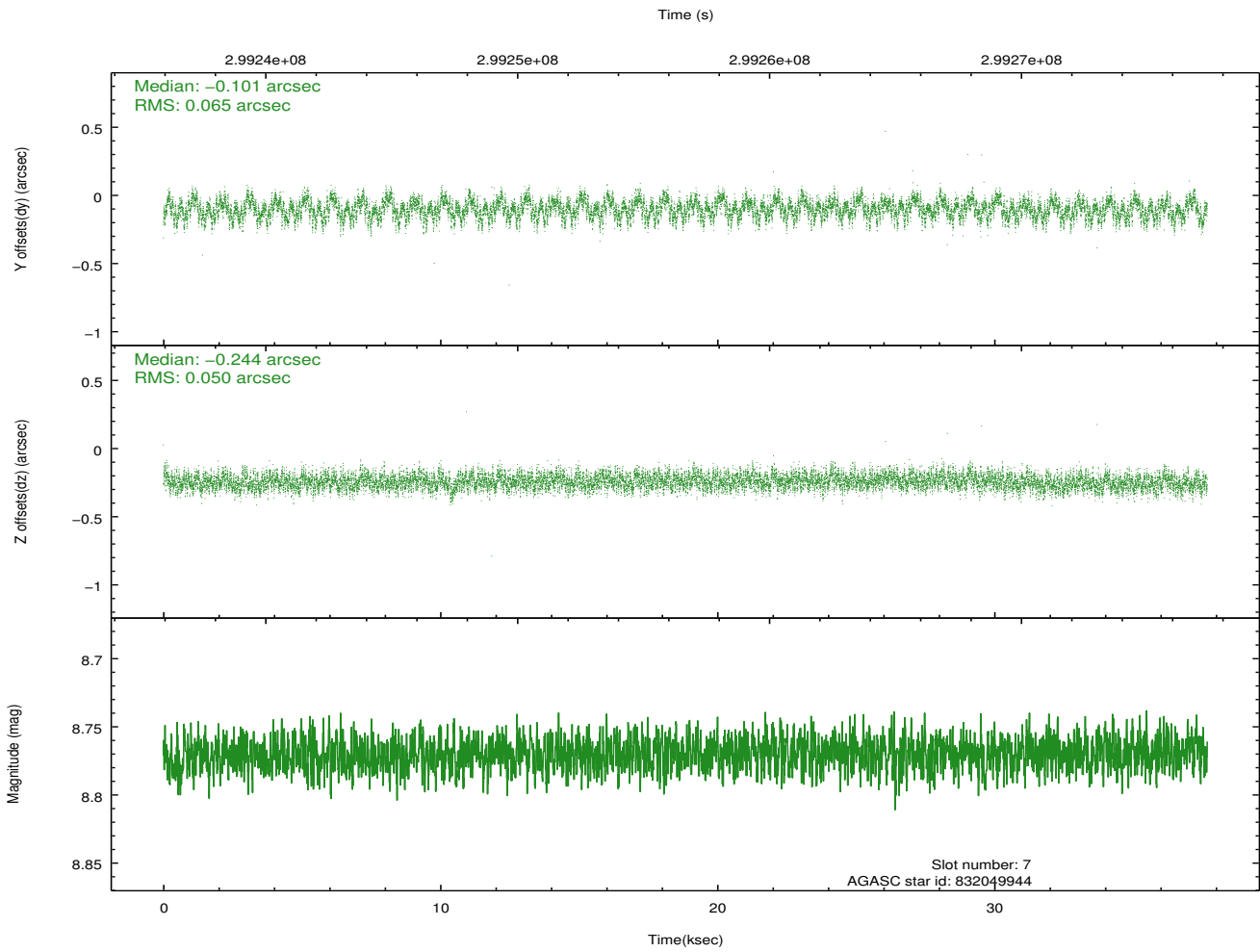
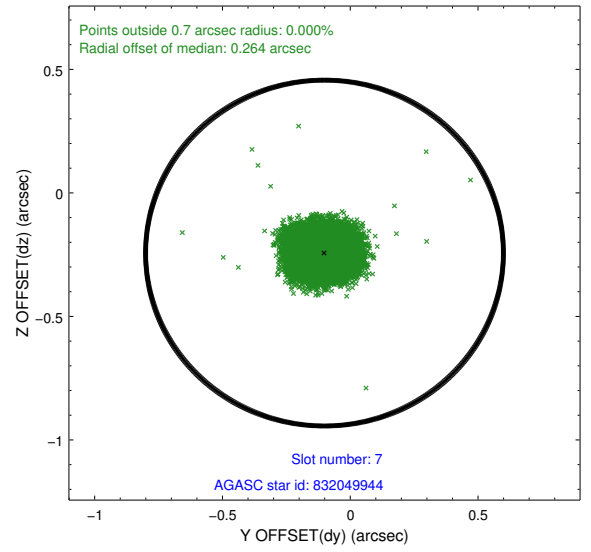
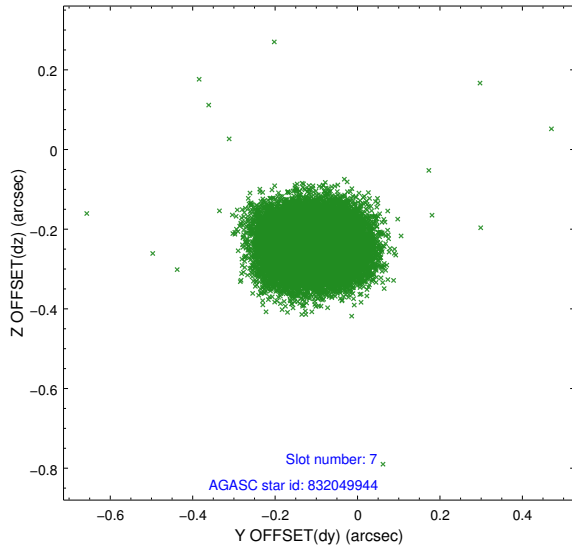
2.4.3 Slot 5



2.4.4 Slot 6

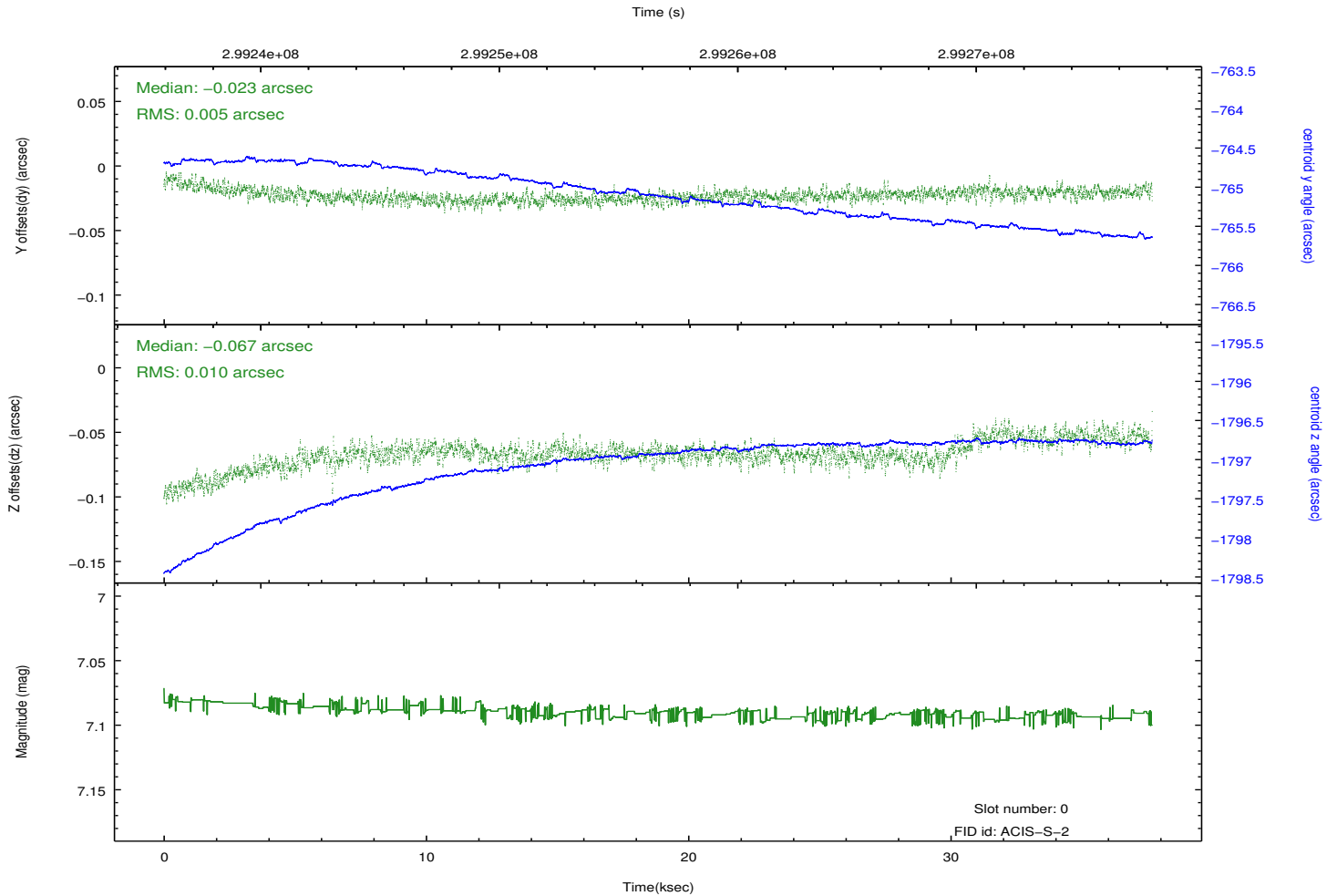
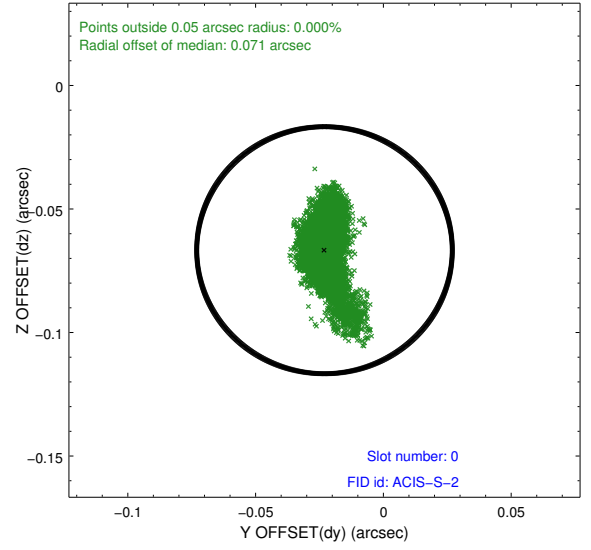
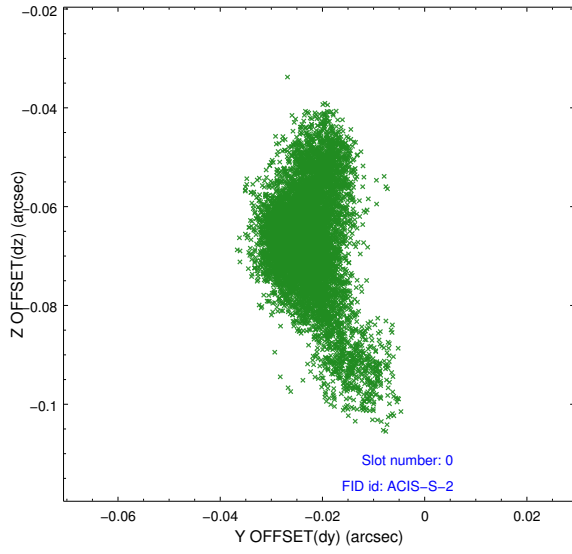


2.4.5 Slot 7

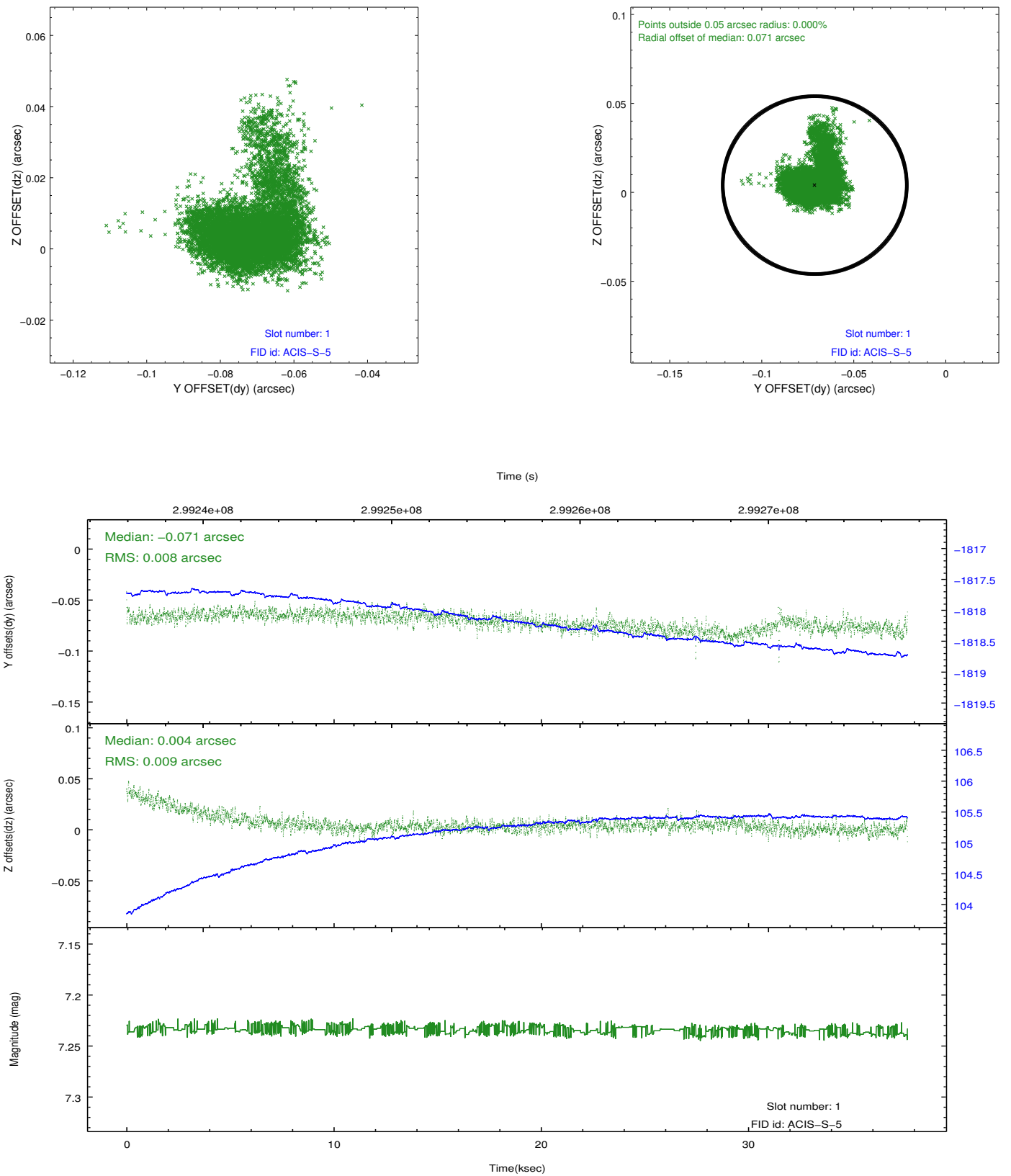


2.5 FID Slots

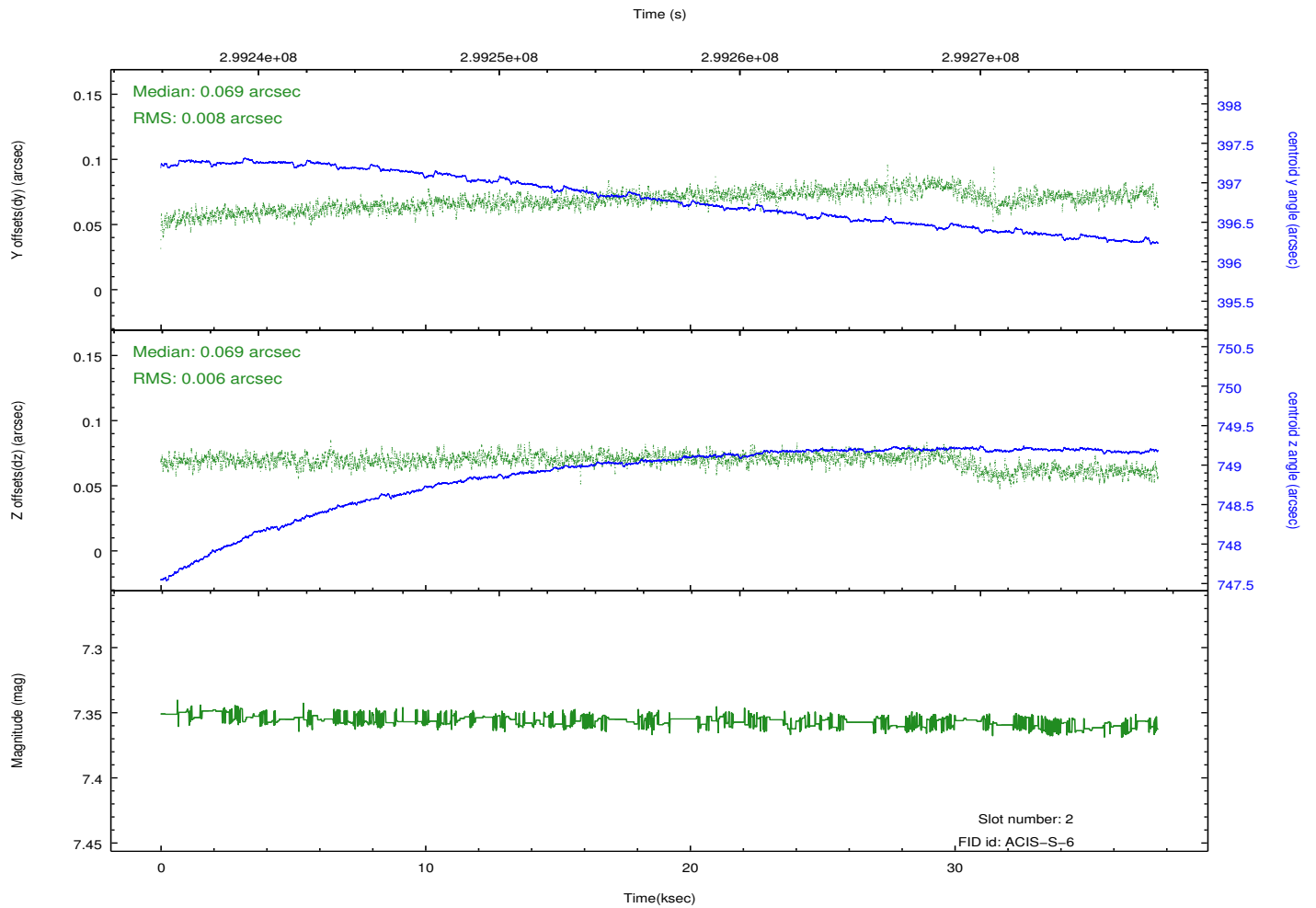
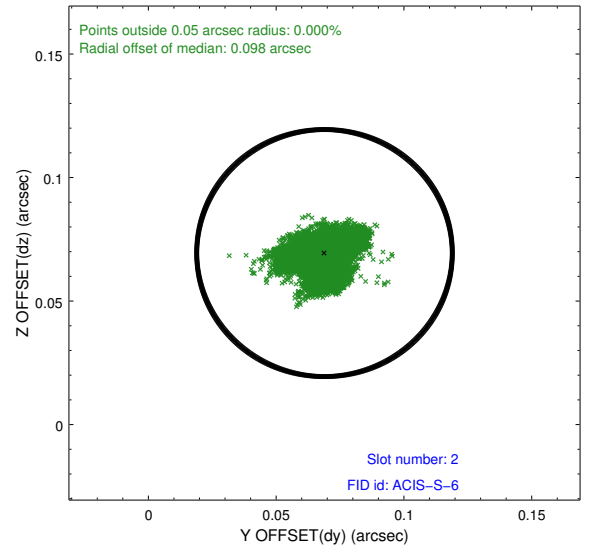
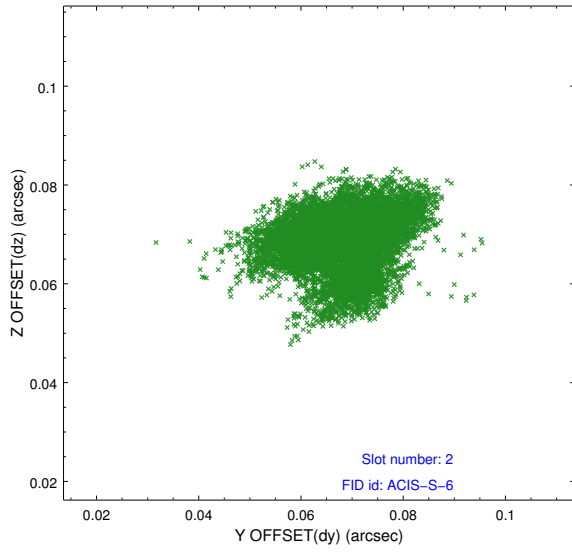
2.5.1 Slot 0



2.5.2 Slot 1



2.5.3 Slot 2

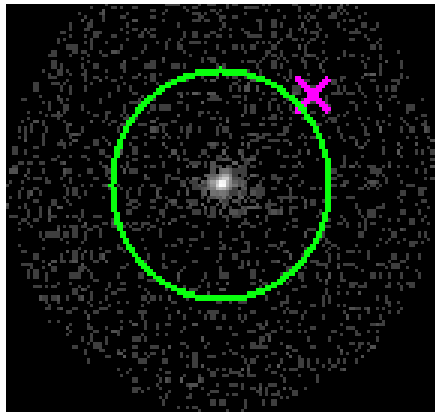


3 Gratings

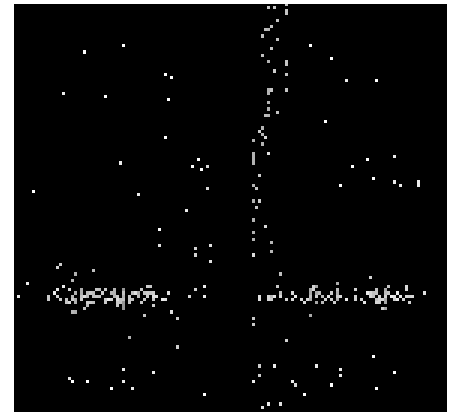
3.1 HEG Arm



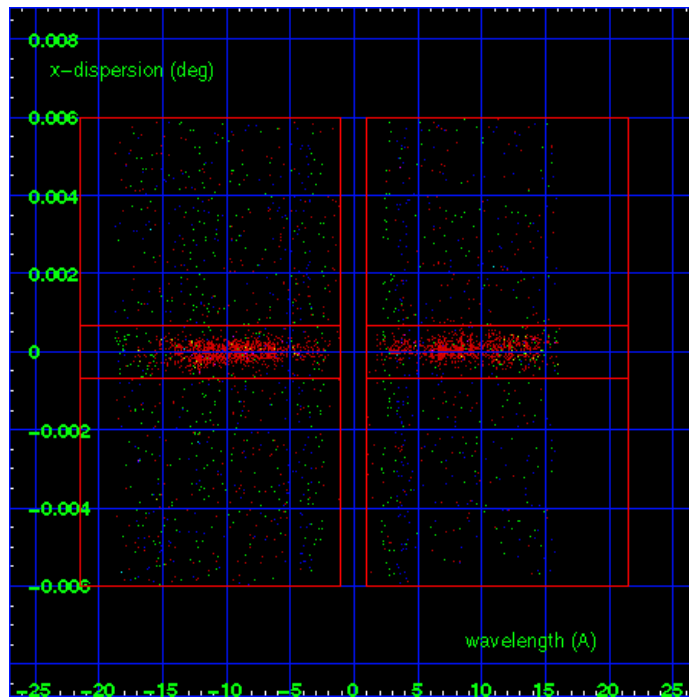
HEG Order Sort 123



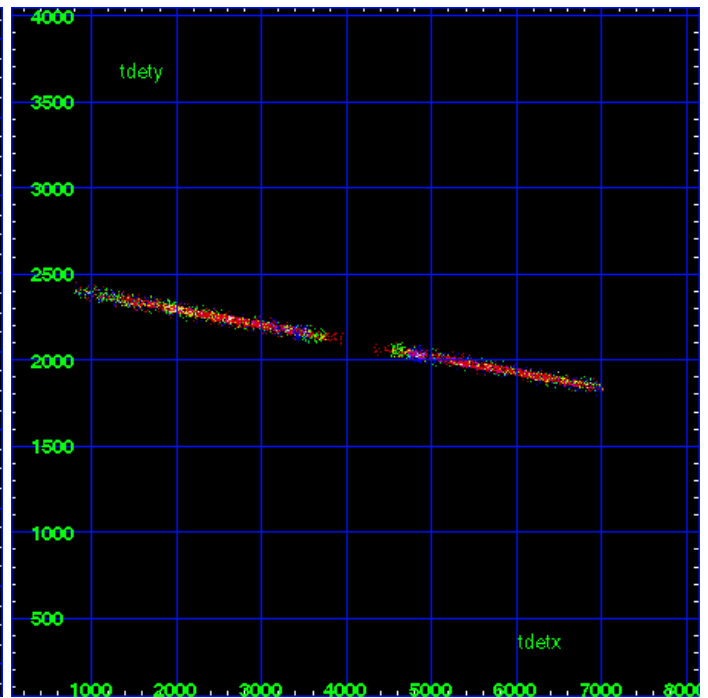
HEG Zero Order



HEG Order Sort ALL

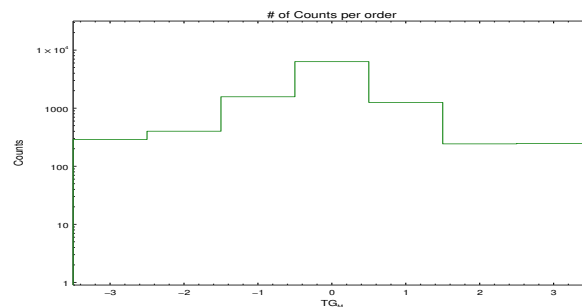


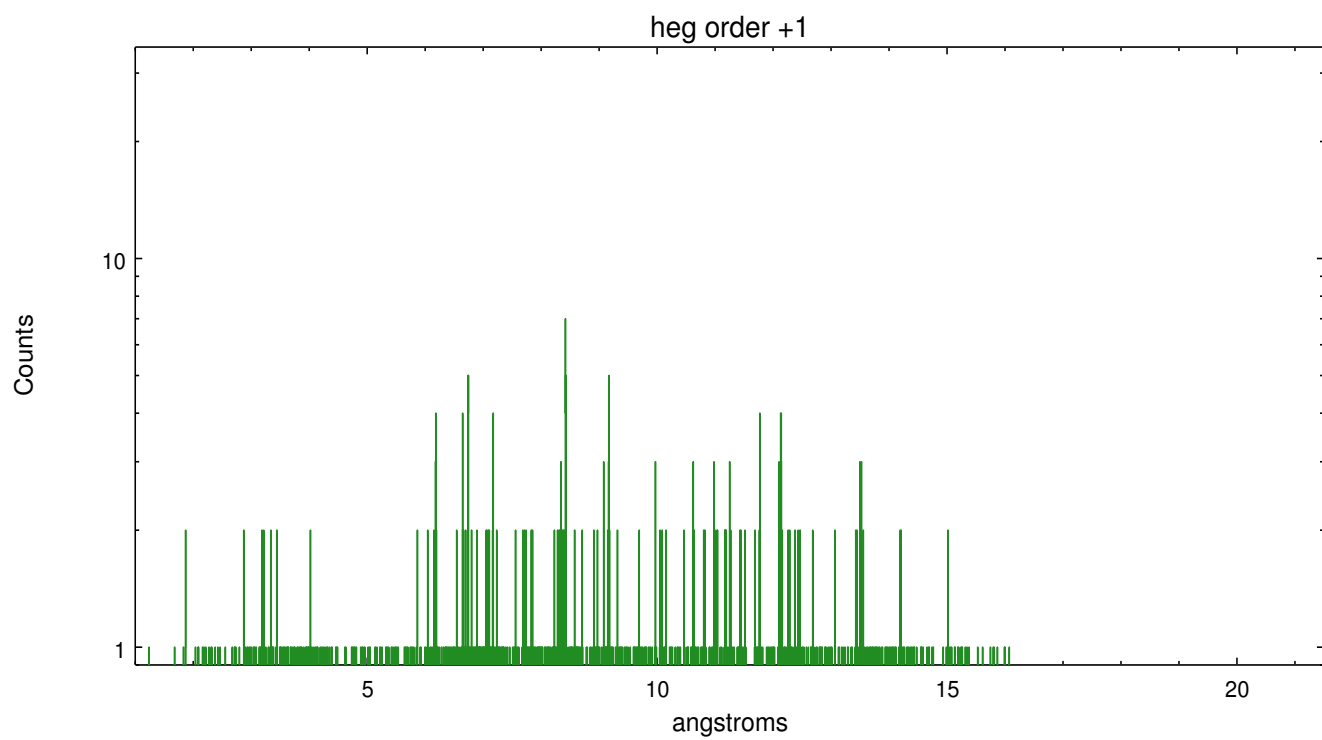
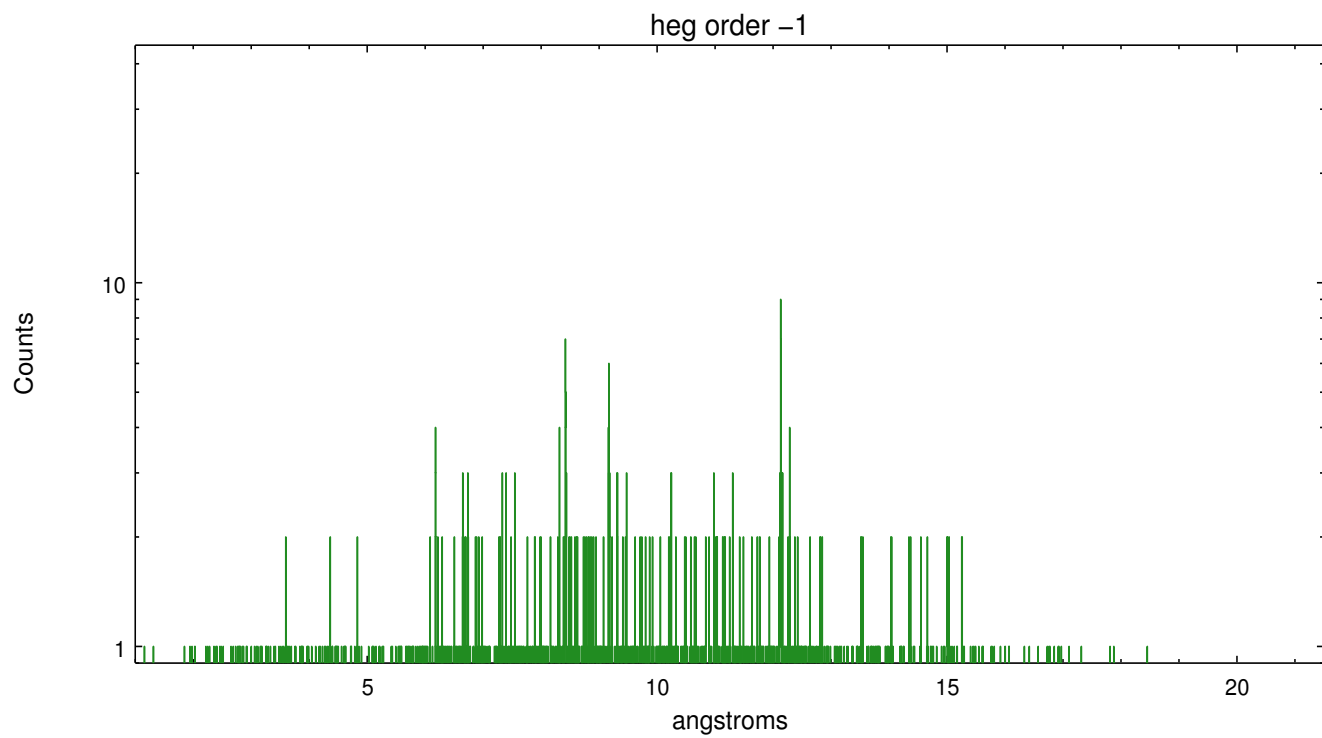
Spot Image HEG



Full Detector HEG

	order -3	order -2	order -1	order 0	order 1	order 2	order 3
Events	289	401	1573	6333	1256	243	247

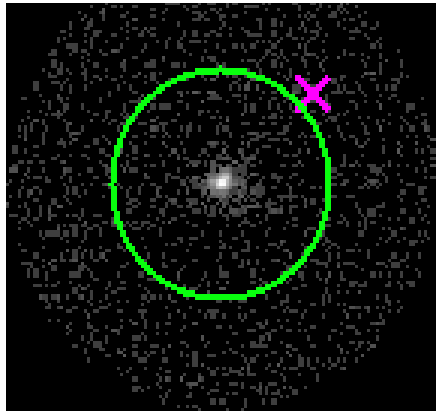




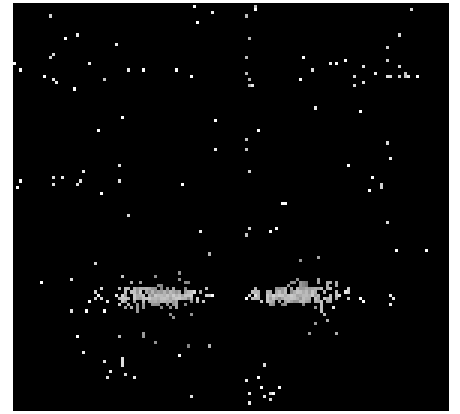
3.2 MEG Arm



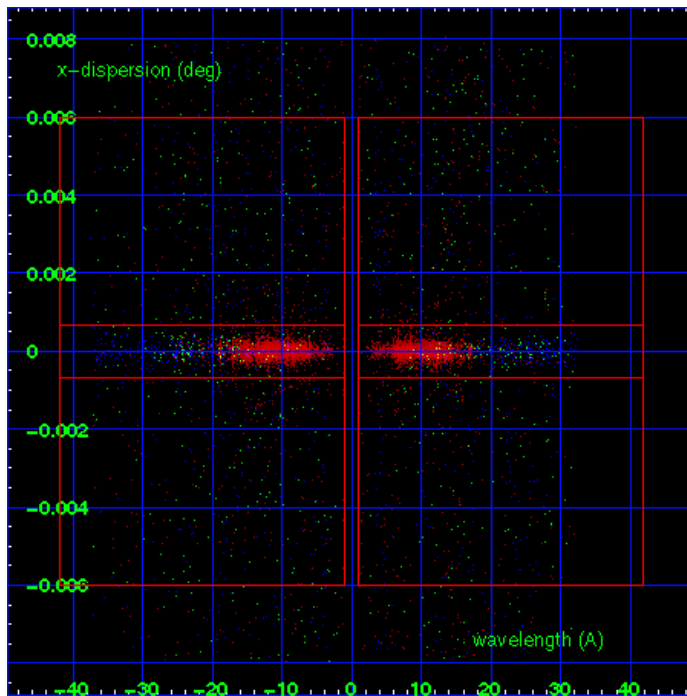
MEG Order Sort 123



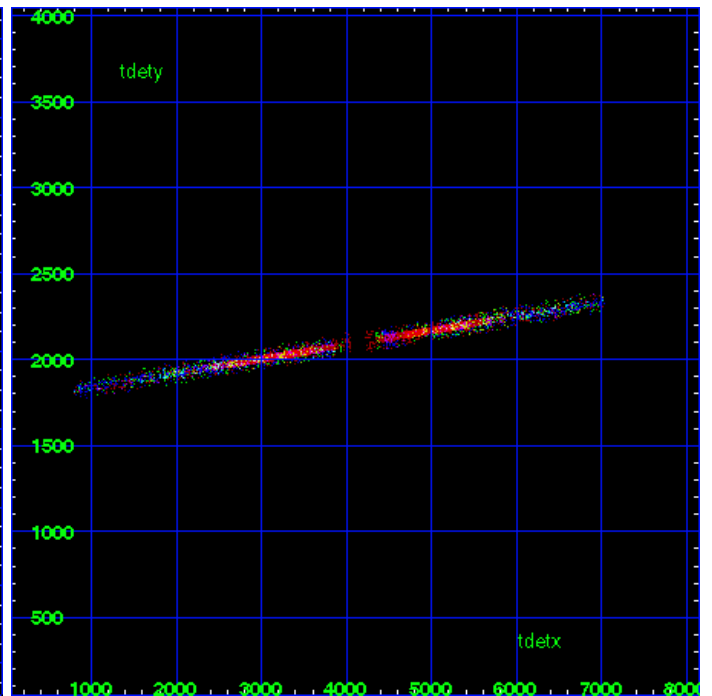
MEG Zero Order



MEG Order Sort ALL

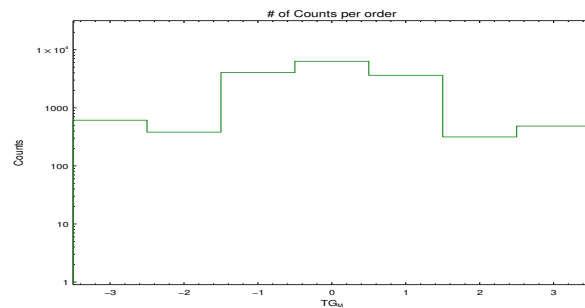


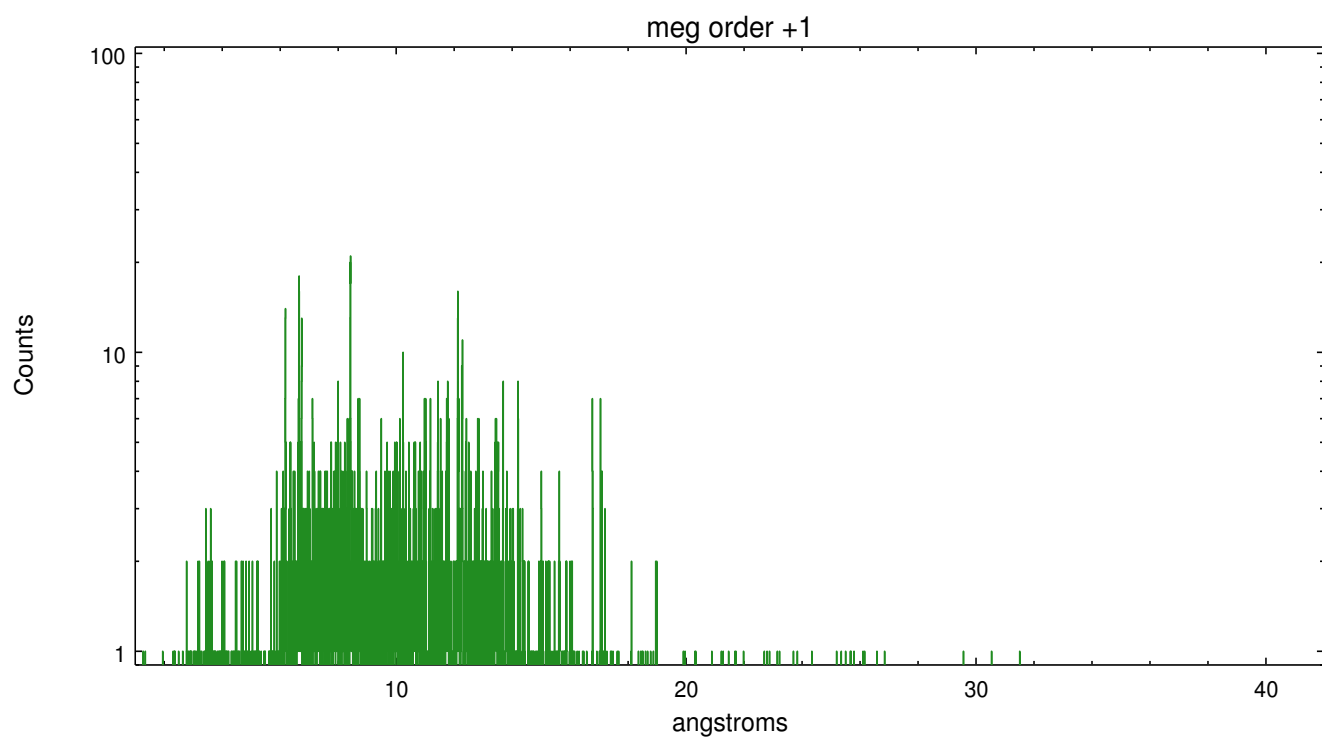
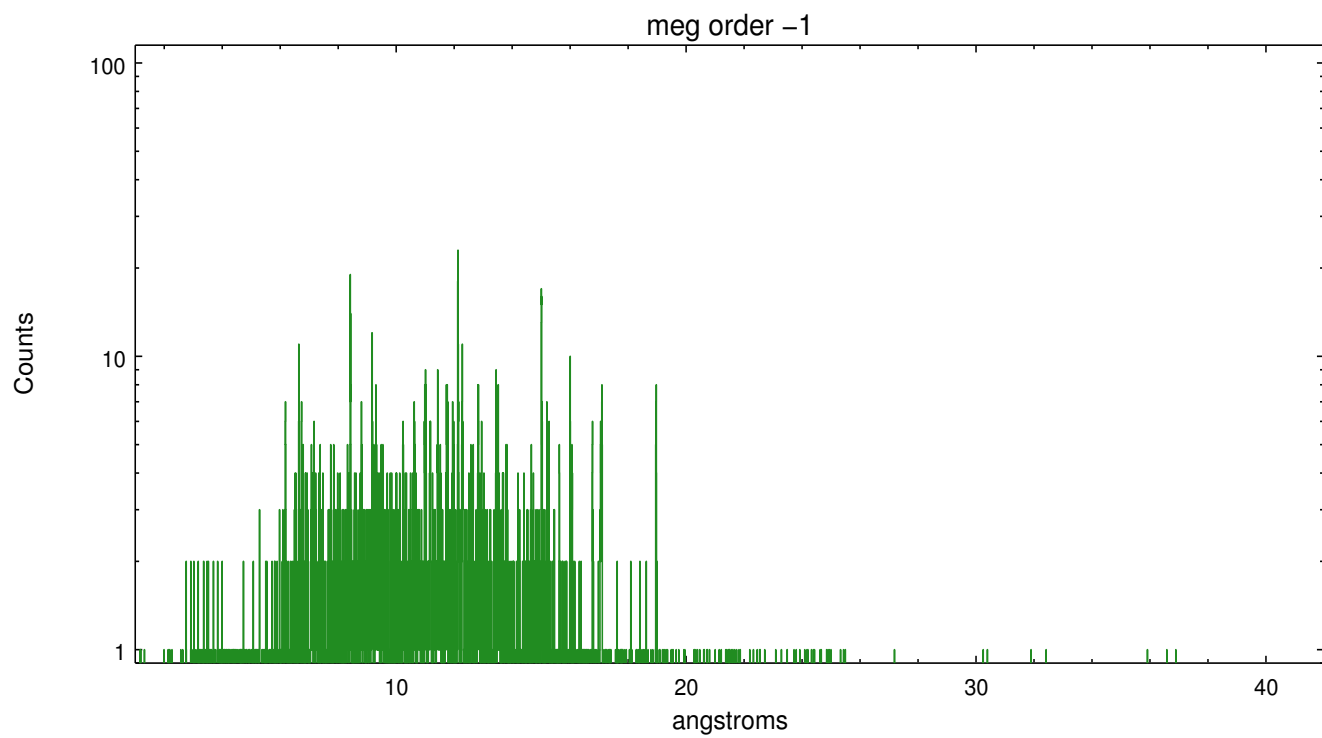
Spot Image MEG



Full Detector MEG

	order -3	order -2	order -1	order 0	order 1	order 2	order 3
Events	612	381	4041	6333	3632	315	485





A Summary

A.1 Status

V&V Scientist	Joy Nichols
V&V Date (YYYY-MM-DD)	2012.04.27
V&V Edition	1
V&V Disposition and Status	OK
V&V Charge Time	37.2895998

A.2 Comments

An additional X-ray source, V* AZ Cap, is nearby the primary source and has a faint dispersed spectrum.