

V&V Reference Report

L2 ASCDS Version : 8.4.5

Observation 7943 - L2 Version 3
Chandra X-Ray Center

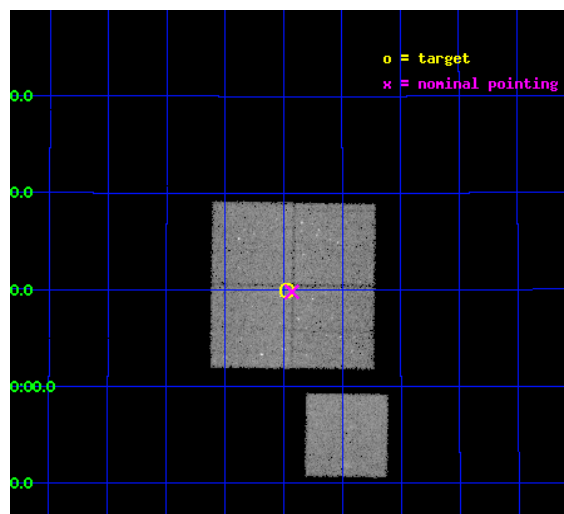
L2 Processing Date : Jun 28 2012

Contents

1	Front	2
2	OBI	3
2.1	OBI	3
2.1.1	Images	3
2.1.2	Bias	3
2.1.3	Parameters	4
2.1.4	Events	4
2.2	Compared Parameters	5
2.3	Aspect	6
2.4	Star Slots	9
2.4.1	Slot 3	9
2.4.2	Slot 4	10
2.4.3	Slot 5	11
2.4.4	Slot 6	12
2.4.5	Slot 7	13
2.5	FID Slots	14
2.5.1	Slot 0	14
2.5.2	Slot 1	15
2.5.3	Slot 2	16
A	Summary	17
A.1	Status	17
A.2	Comments	17

1 Front

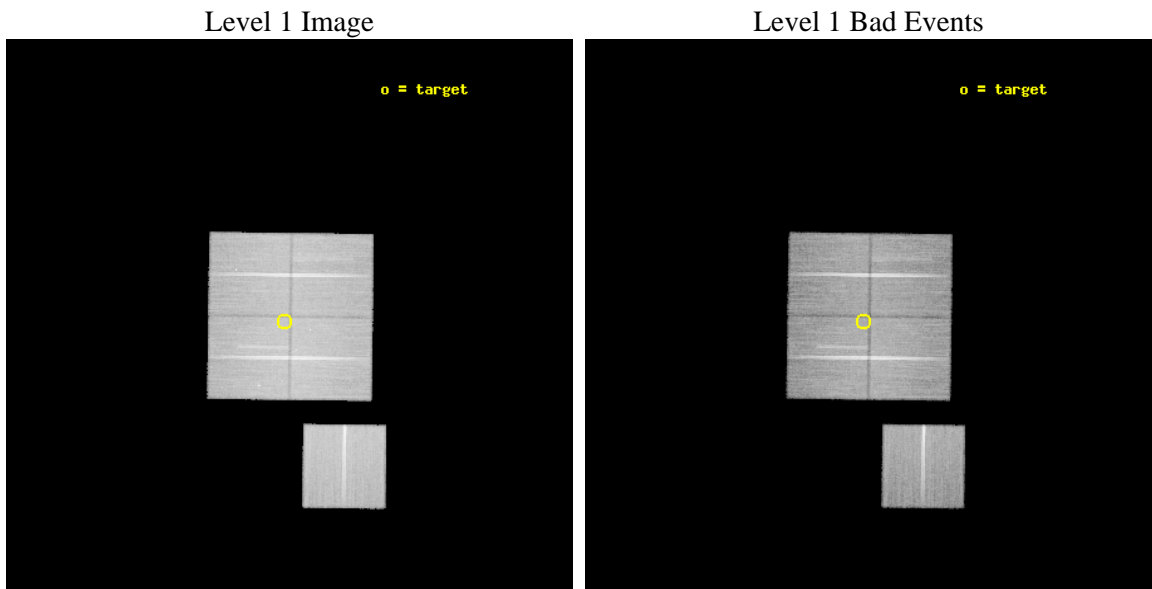
seq_num	900487	Sequence number
obs_id	7943	Observation id
title	Chandra Large Scale Survey of the NOAO Bootes Deep Field (A)	Propo
observer	Dr. Stephen Murray	Principal investigator
object	Bootes3 2	Source name
dtcycle	0	
cycle	P	events from which exps? Prim/Second/Both
ra_targ	217.24176	Observer's specified target RA [deg]
dec_targ	35.165871	Observer's specified target Dec [deg]
ra_nom	217.23235209149	Nominal RA [deg]
dec_nom	35.163363964154	Nominal Dec [deg]
roll_nom	180.7698568979	Nominal Roll [deg]
revision	3	Processing version of data
ontime	43145.677371025	Sum of GTIs [s]
livetime	42581.947332787	Livetime [s]
ontime0	43151.959331632	Sum of GTIs [s]
ontime1	43151.959331691	Sum of GTIs [s]
ontime2	43145.677450597	Sum of GTIs [s]
ontime3	43145.677371025	Sum of GTIs [s]
ontime6	43145.677351236	Sum of GTIs [s]
l2events	129374	Number of level 2 events



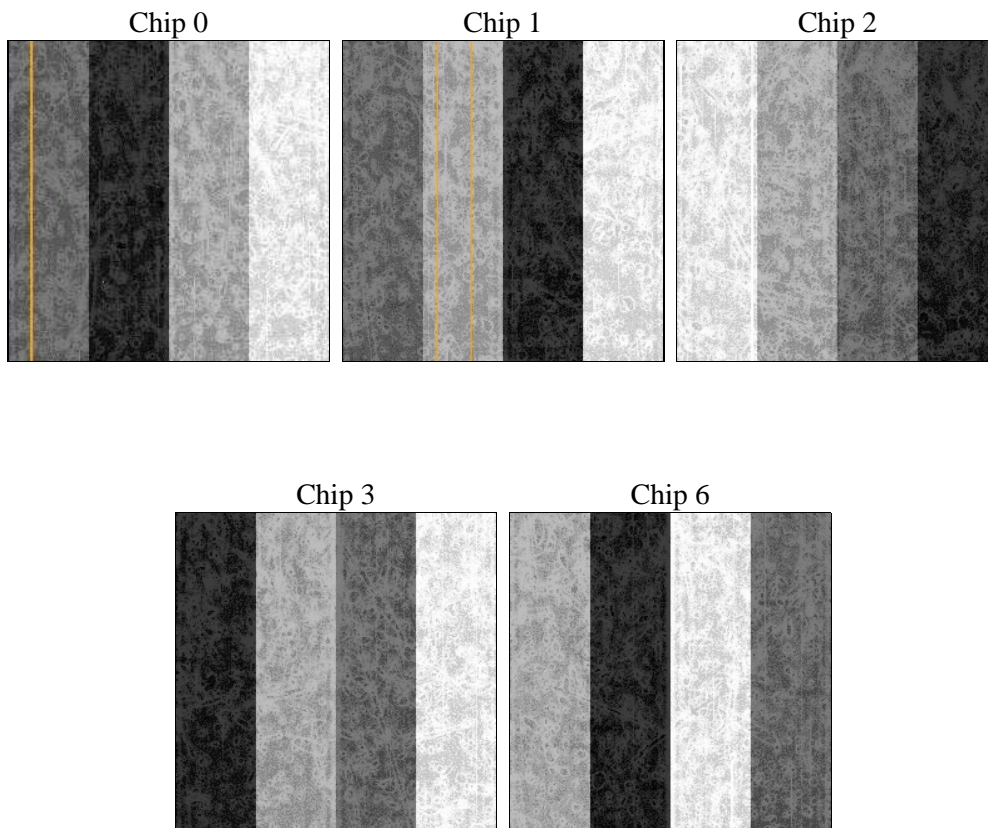
2 OBI

2.1 OBI

2.1.1 Images



2.1.2 Bias



2.1.3 Parameters

obi_num	1	Obi number	sched_exp_time	43000.000000	[s] Scheduled observation exposure time
ascdsver	8.4.5	Processing system revision	ontime	43145.677371025	Sum of GTIs [s]
caldbver	4.5.0	 	ontime0	43151.959331632	Sum of GTIs [s]
date	2012-06-28T14:26:58	Date and time of file creation	ontime1	43151.959331691	Sum of GTIs [s]
revision	3	Processing version of data	ontime2	43145.677450597	Sum of GTIs [s]
			ontime3	43145.677371025	Sum of GTIs [s]
			ontime6	43145.677351236	Sum of GTIs [s]
			l1events	1621939	Number of level 1 events

2.1.4 Events

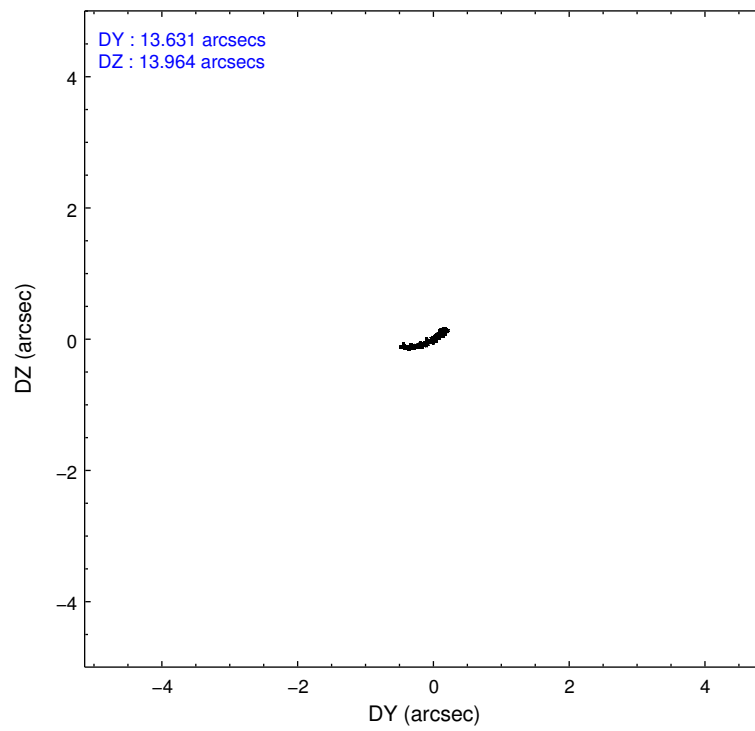
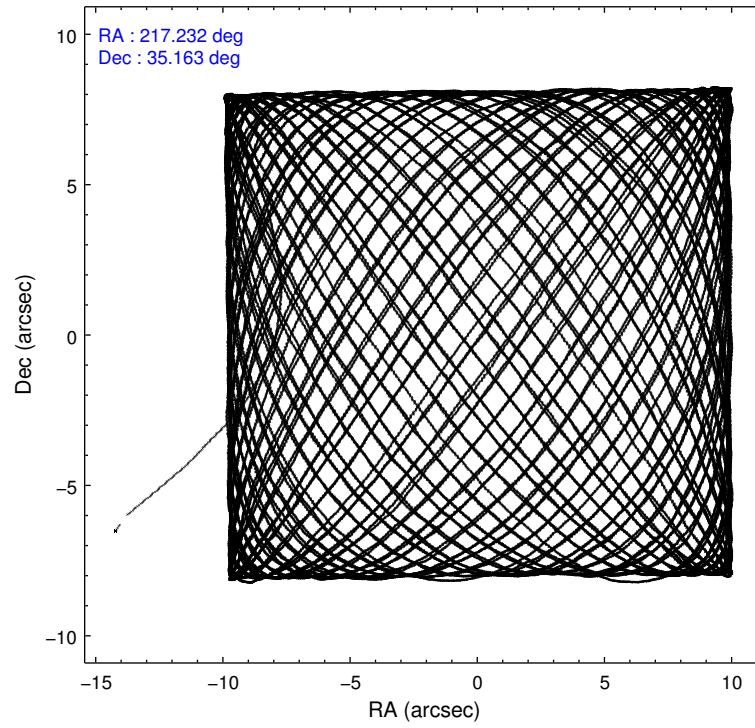
	ccd 0	ccd 1	ccd 2	ccd 3	ccd 6
level 1 events	310883	300157	354899	328292	327708
rejected events	279180	267540	323657	297770	295928
rejected %	89%	89%	91%	90%	90%

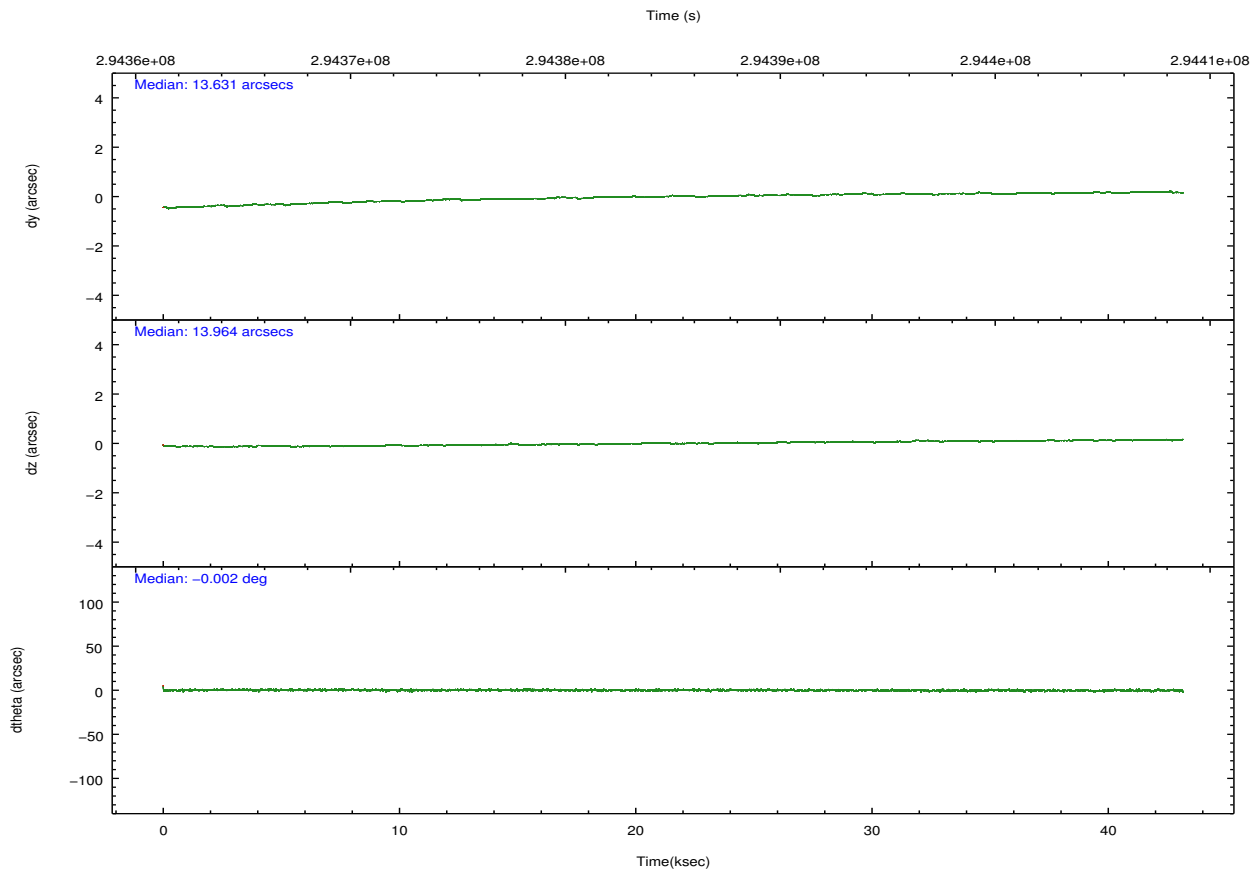
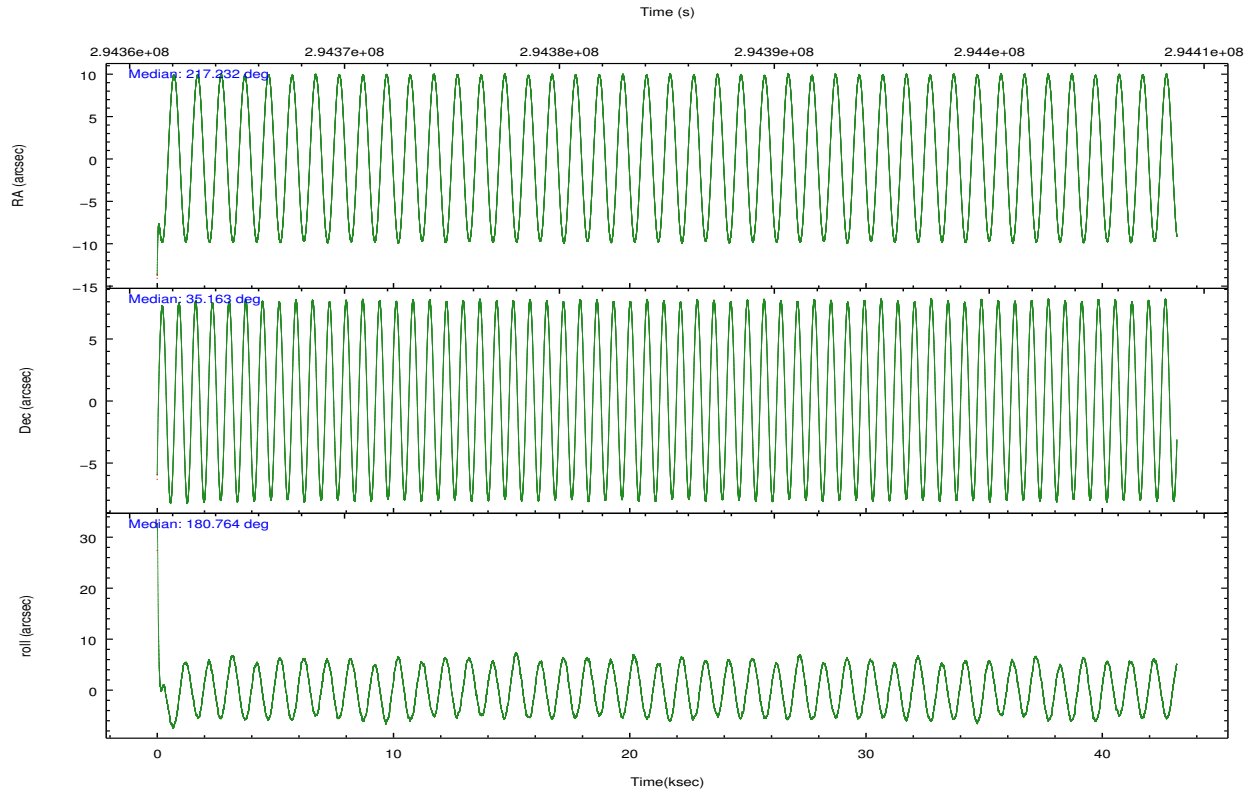
	ccd 0	ccd 1	ccd 2	ccd 3	ccd 6
grade 0 events	11885	11459	12171	11721	11714
	3%	3%	3%	3%	3%
grade 1 events	157	146	193	178	152
	0%	0%	0%	0%	0%
grade 2 events	7705	7323	7520	6777	7201
	2%	2%	2%	2%	2%
grade 3 events	3675	3848	3251	3434	3582
	1%	1%	0%	1%	1%
grade 4 events	3264	3816	3286	3399	3396
	1%	1%	0%	1%	1%
grade 5 events	9338	10729	8935	11478	10738
	3%	3%	2%	3%	3%
grade 6 events	5739	6768	5529	5727	6448
	1%	2%	1%	1%	1%
grade 7 events	269120	256068	314014	285578	284477
	86%	85%	88%	86%	86%

2.2 Compared Parameters

Parameter	Planned	Actual	Parameter	Planned	Actual
Instrument	ACIS	ACIS	Obspar format version number	7	7
Detector	ACIS-01236	ACIS-01236	Obspar file type	PREDICTED	ACTUAL
Grating	NONE	NONE	Obspar update status	NONE	UPDATED
Data mode	VFAINT	VFAINT	Number of optional ACIS chips dropped	0	0
Observation mode	POINTING	POINTING	On-chip summing requested	N	N
[deg] Pointing RA	217.261200	217.2323520914855	Subarray requested	NONE	NONE
[deg] Pointing Dec	35.177516	35.16336396415411	Alternating exposures requested	N	N
[deg] Pointing Roll	180.544545	180.7698568978985	[s] Primary exposure time	0.000000	3.1
[mm] SIM focus pos	-0.782348	-0.7809083437167272			
[mm] SIM defocus	0	0.001439871863259334			
[mm] SIM translation stage pos	-233.592463	-233.5874344608287			
[mm] SIM translation stage offset	0	-0.005018542100998502			
[s] Observation start time (MET)	294363584.184000	294362221.54783			
Observation start date	2007-04-30T23:38:39	2007-04-30T23:17:01			
[s] Observation end time (MET)	294406584.184000	294407212.89997			
Observation end date	2007-05-01T11:35:19	2007-05-01T11:46:52			
Read mode	TIMED	TIMED			

2.3 Aspect



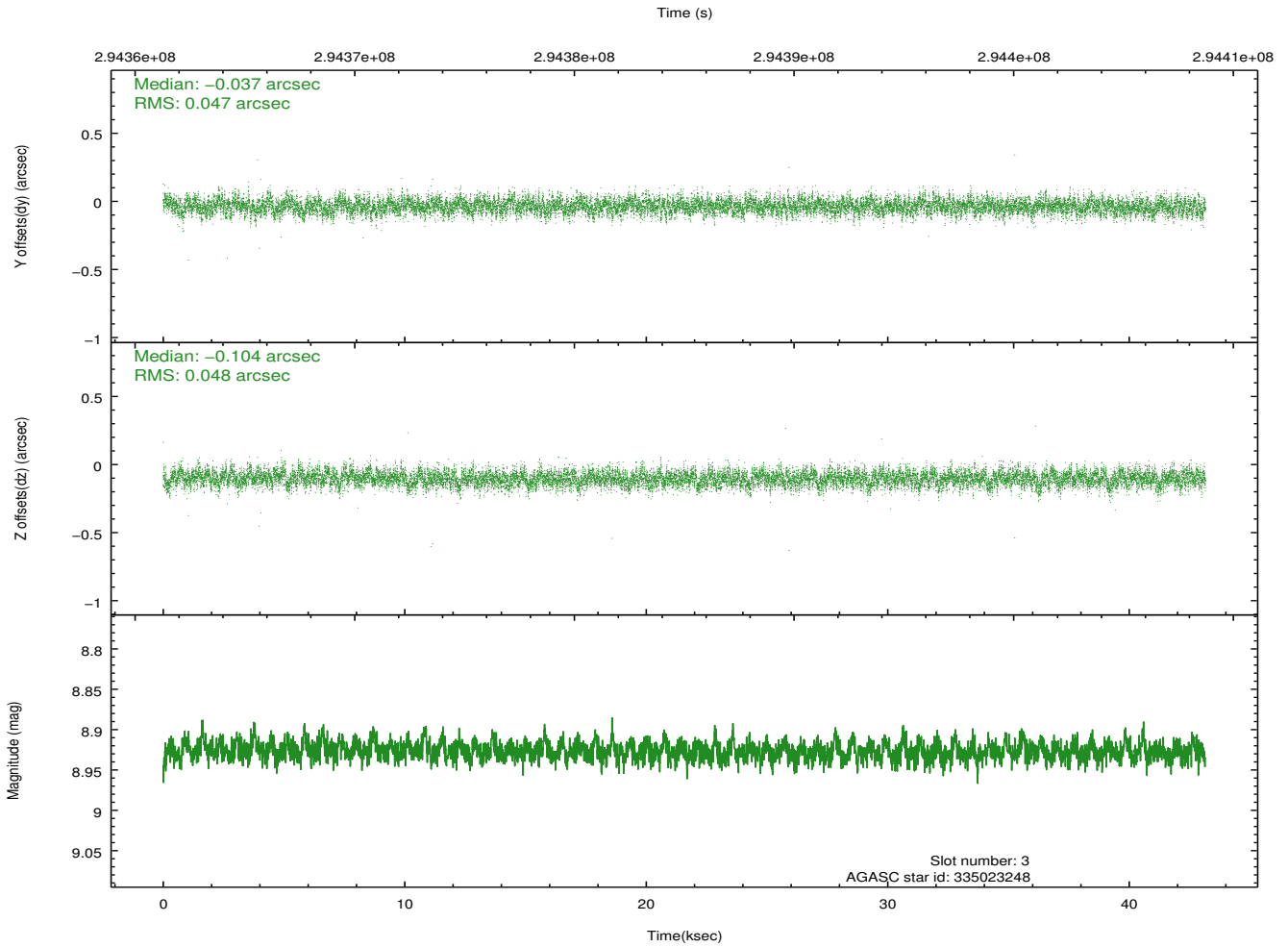
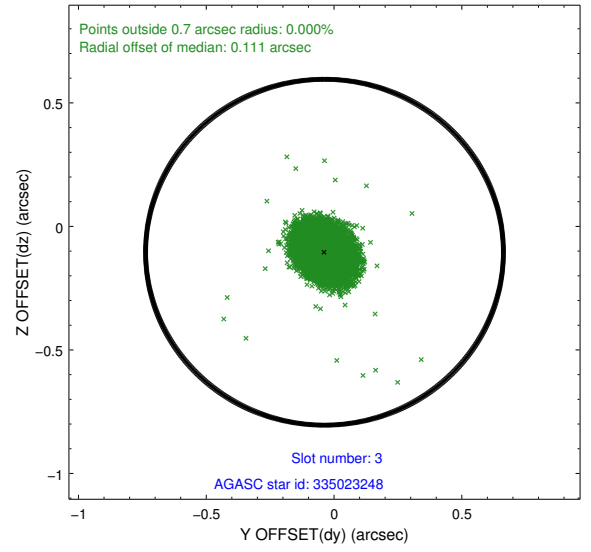
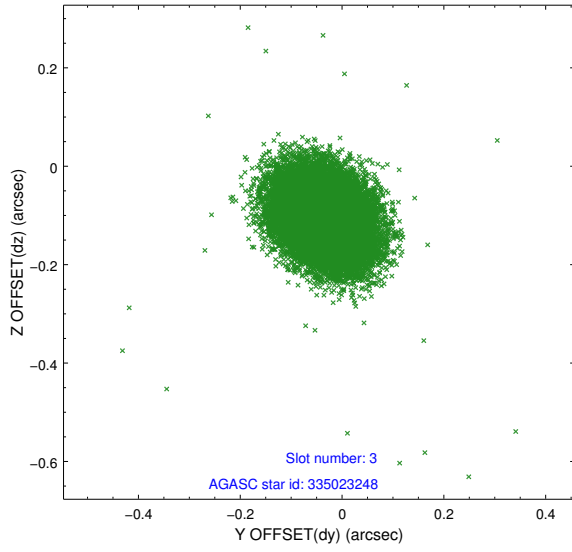


Slot Statistics

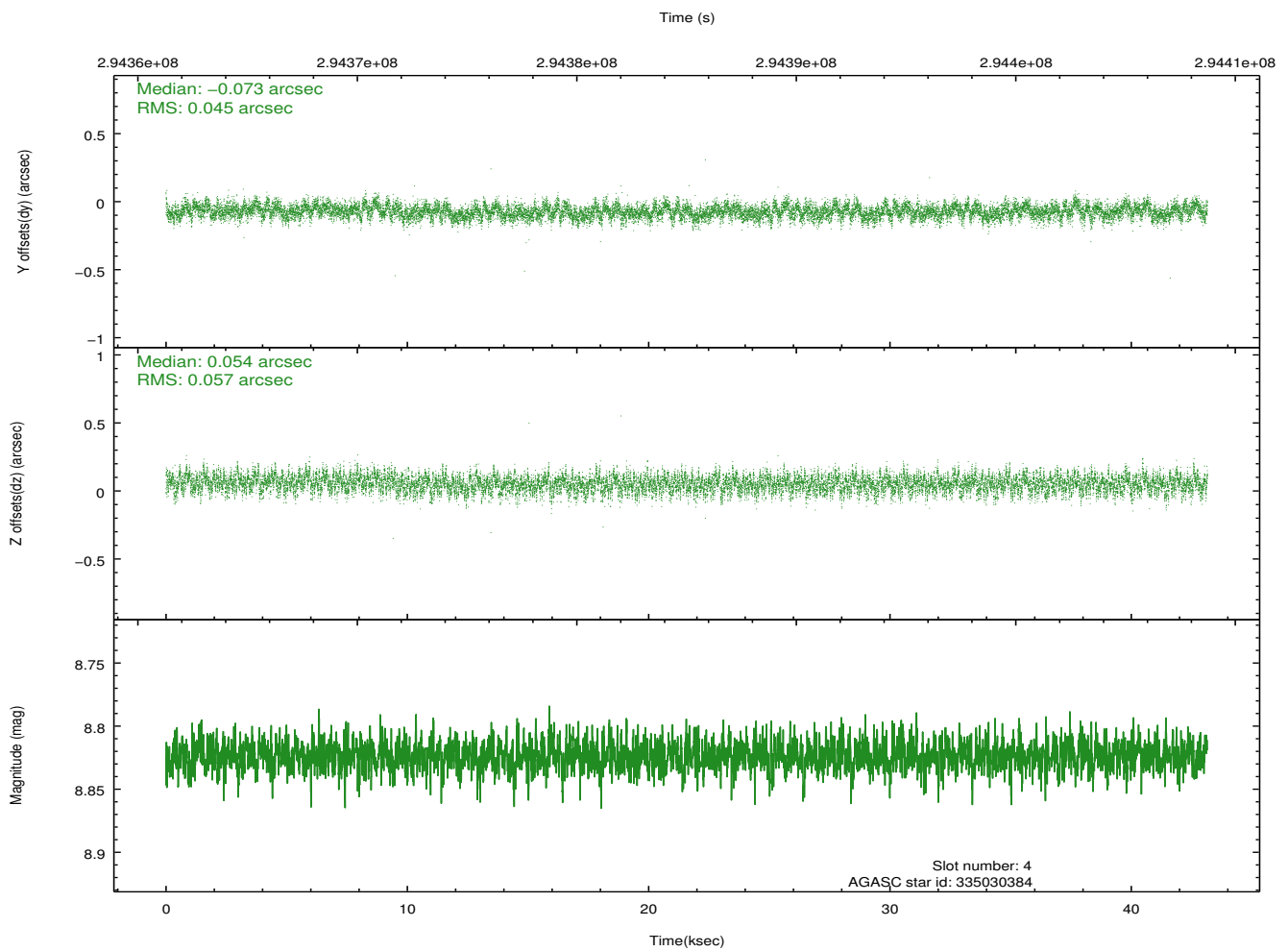
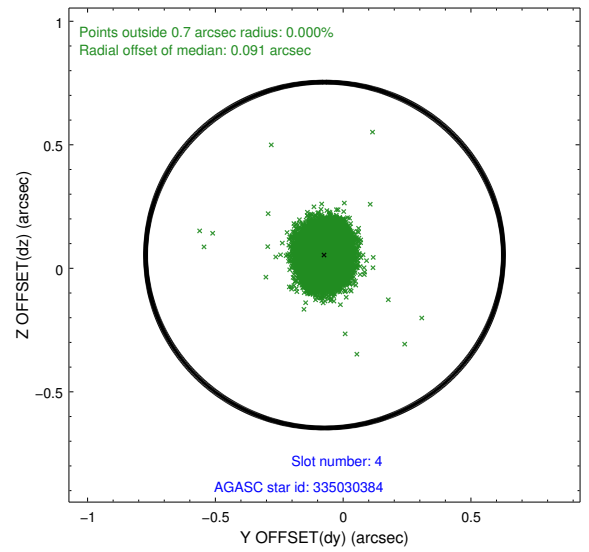
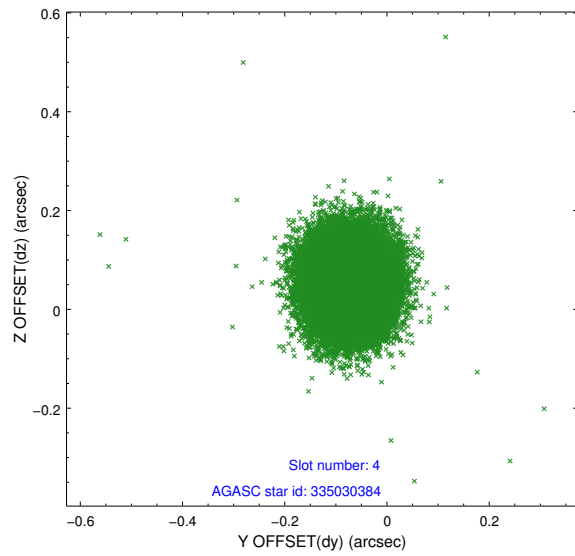
slot	status	id	mag	n_pts	med_dy	med_dz	dr1	dr2	ra	dec	mean_y	mean_z
0	FID	ACIS-I-1	7.23	10527	-0.012	0.038	0.010	0.017	0.000000	0.000000	925.89	-837.50
1	FID	ACIS-I-4	7.16	10527	0.204	0.003	0.010	0.018	0.000000	0.000000	2146.17	1062.26
2	FID	ACIS-I-5	7.22	10527	-0.291	0.030	0.009	0.016	0.000000	0.000000	-1822.37	1060.17
3	GUIDE	335023248	8.93	21040	-0.037	-0.104	0.070	0.116	217.634832	34.944512	-1094.39	847.23
4	GUIDE	335030384	8.82	21043	-0.073	0.054	0.077	0.123	216.806407	34.722197	1361.25	1623.72
5	GUIDE	335414448	7.36	21055	-0.050	0.035	0.059	0.094	216.992261	35.577204	773.75	-1446.28
6	GUIDE	335417968	9.38	21021	0.237	0.006	0.097	0.156	217.358149	35.055285	-280.98	442.75
7	GUIDE	335421696	8.95	21042	-0.077	0.013	0.083	0.133	218.045699	35.772449	-2311.79	-2128.70

2.4 Star Slots

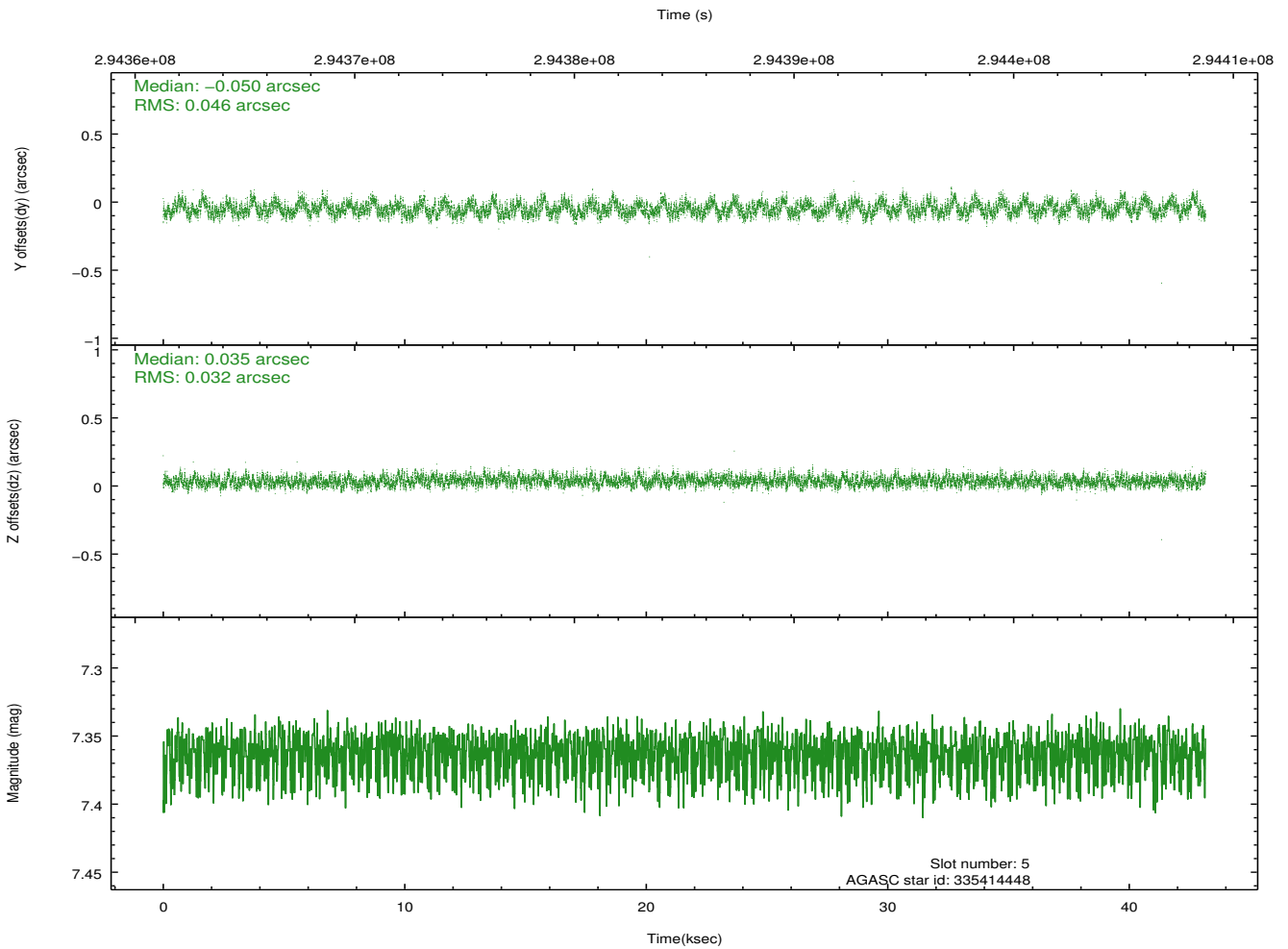
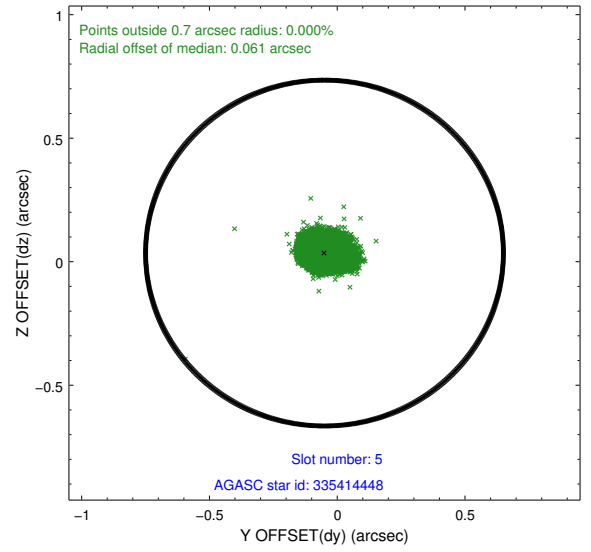
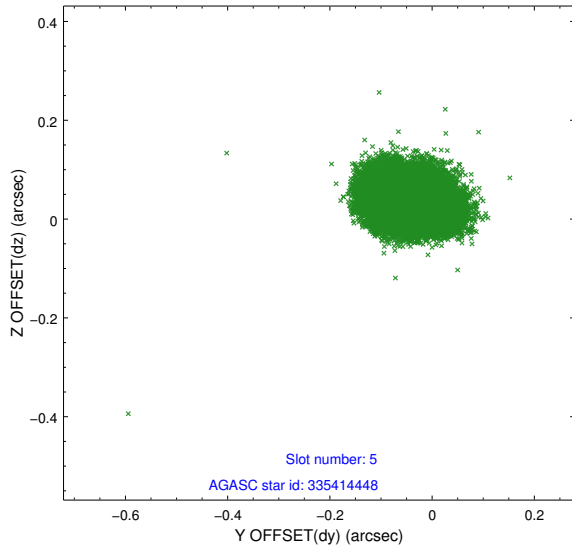
2.4.1 Slot 3



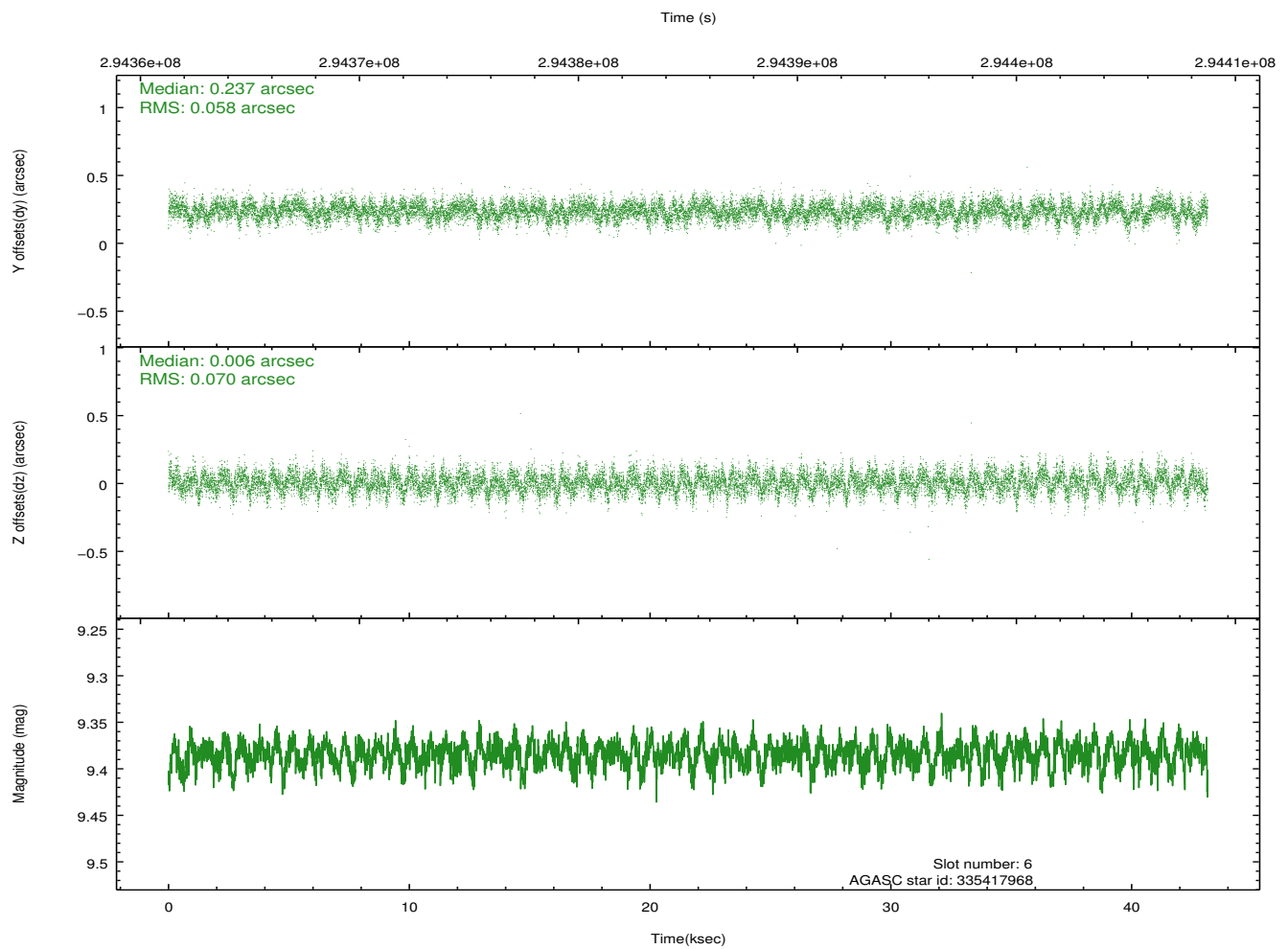
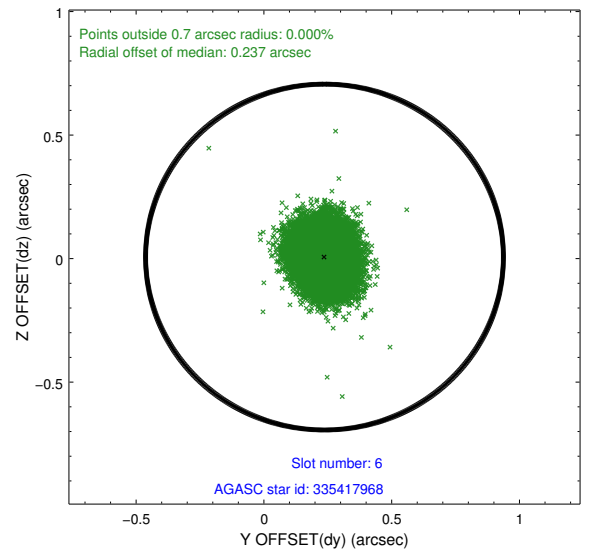
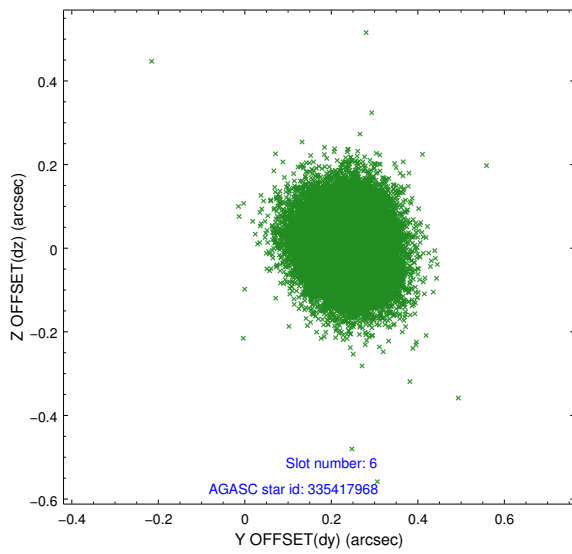
2.4.2 Slot 4



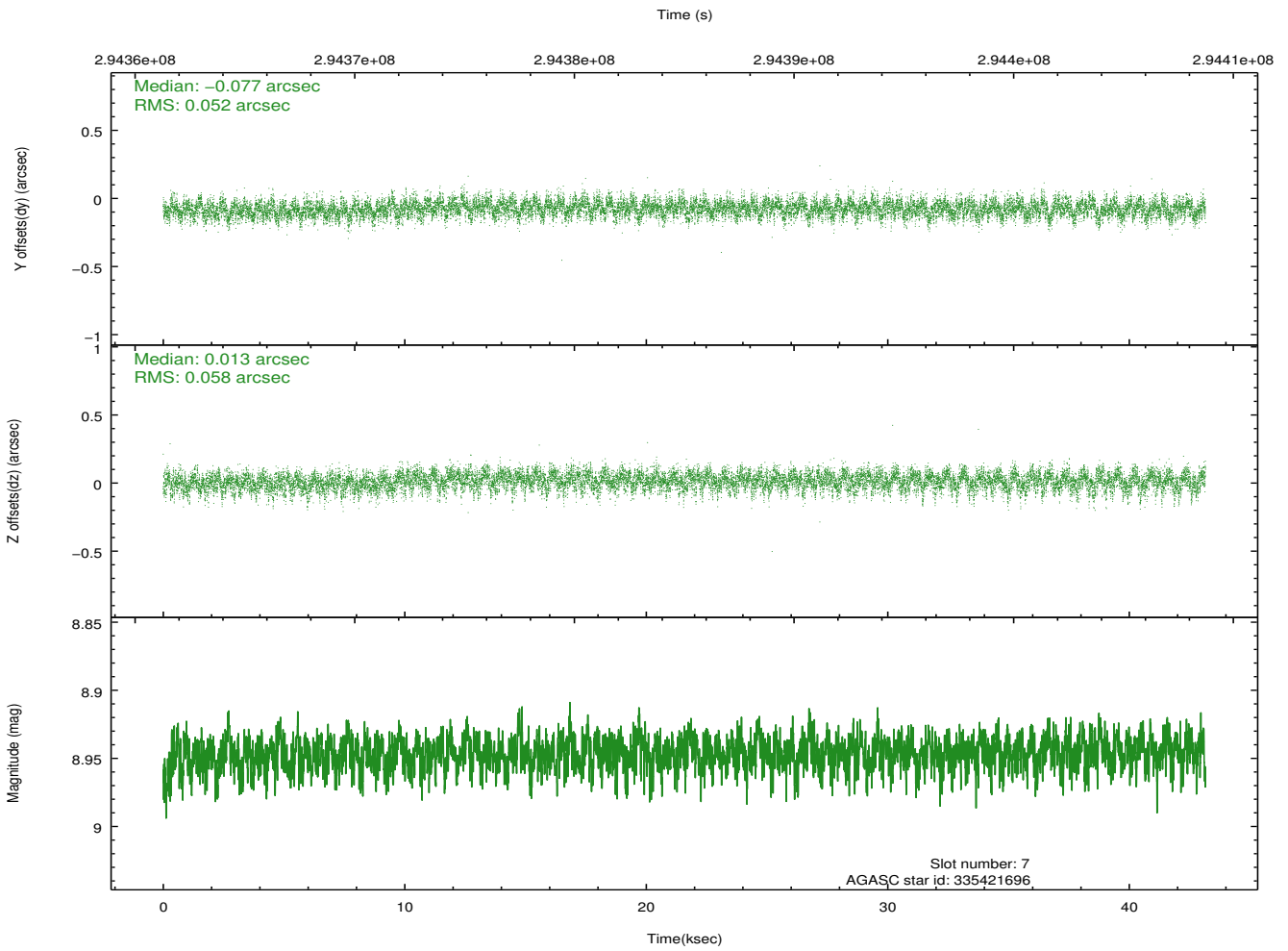
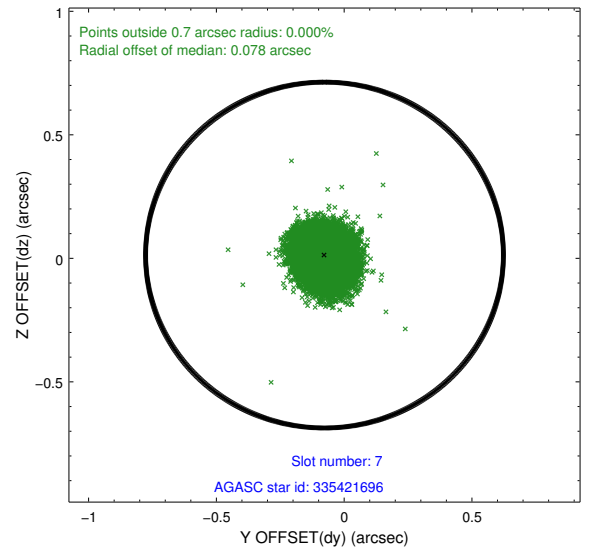
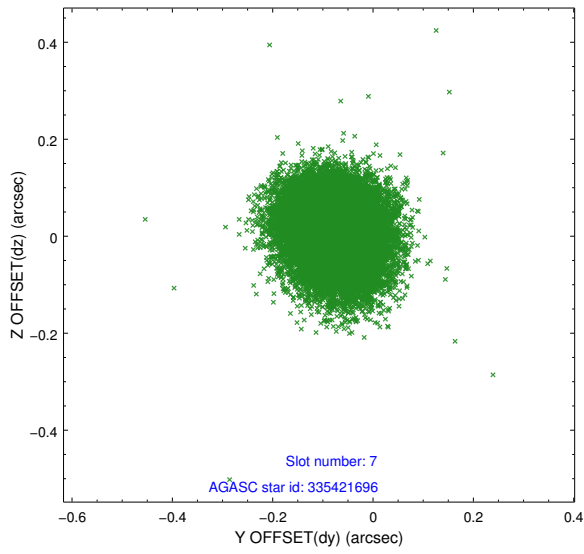
2.4.3 Slot 5



2.4.4 Slot 6

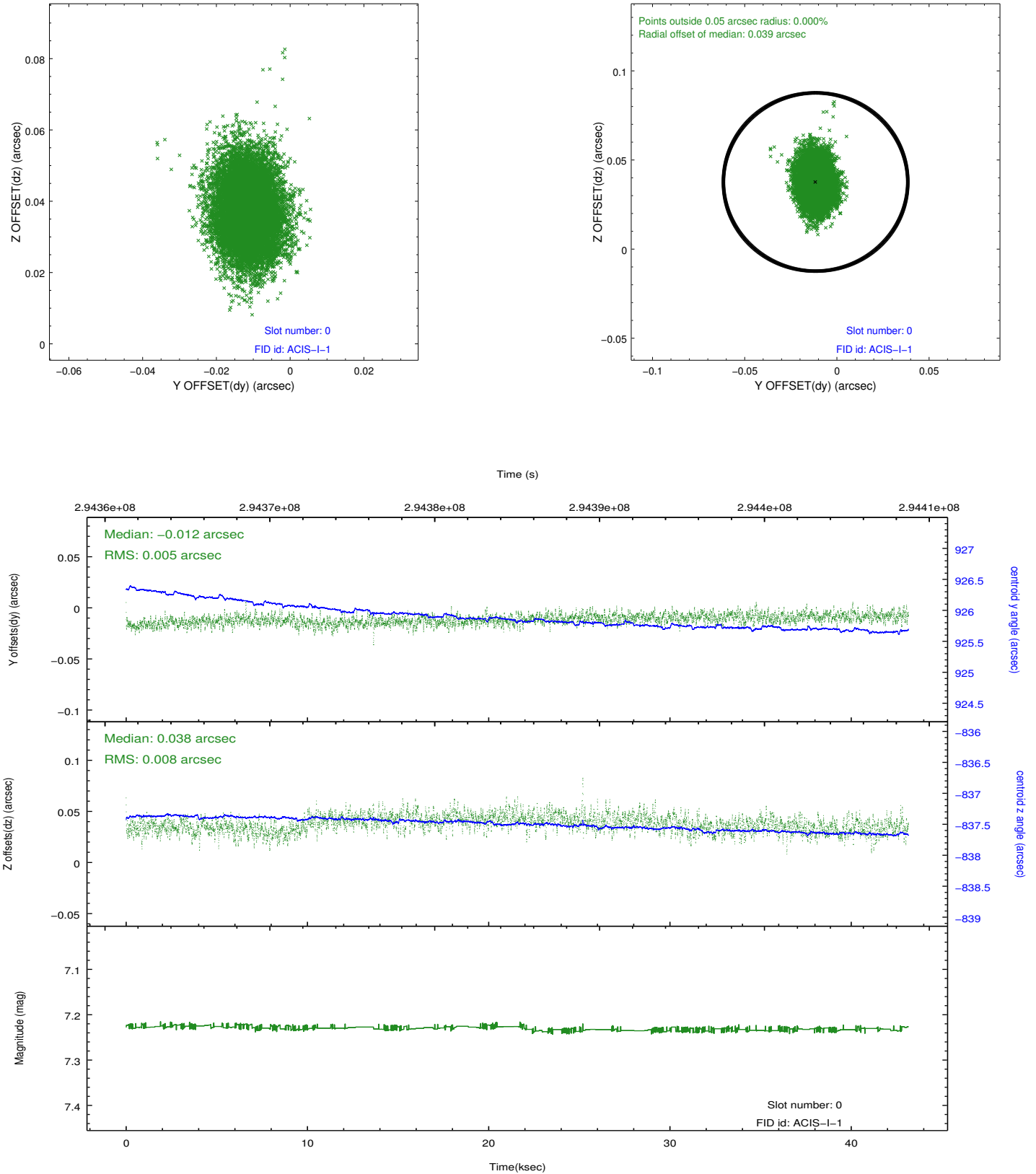


2.4.5 Slot 7

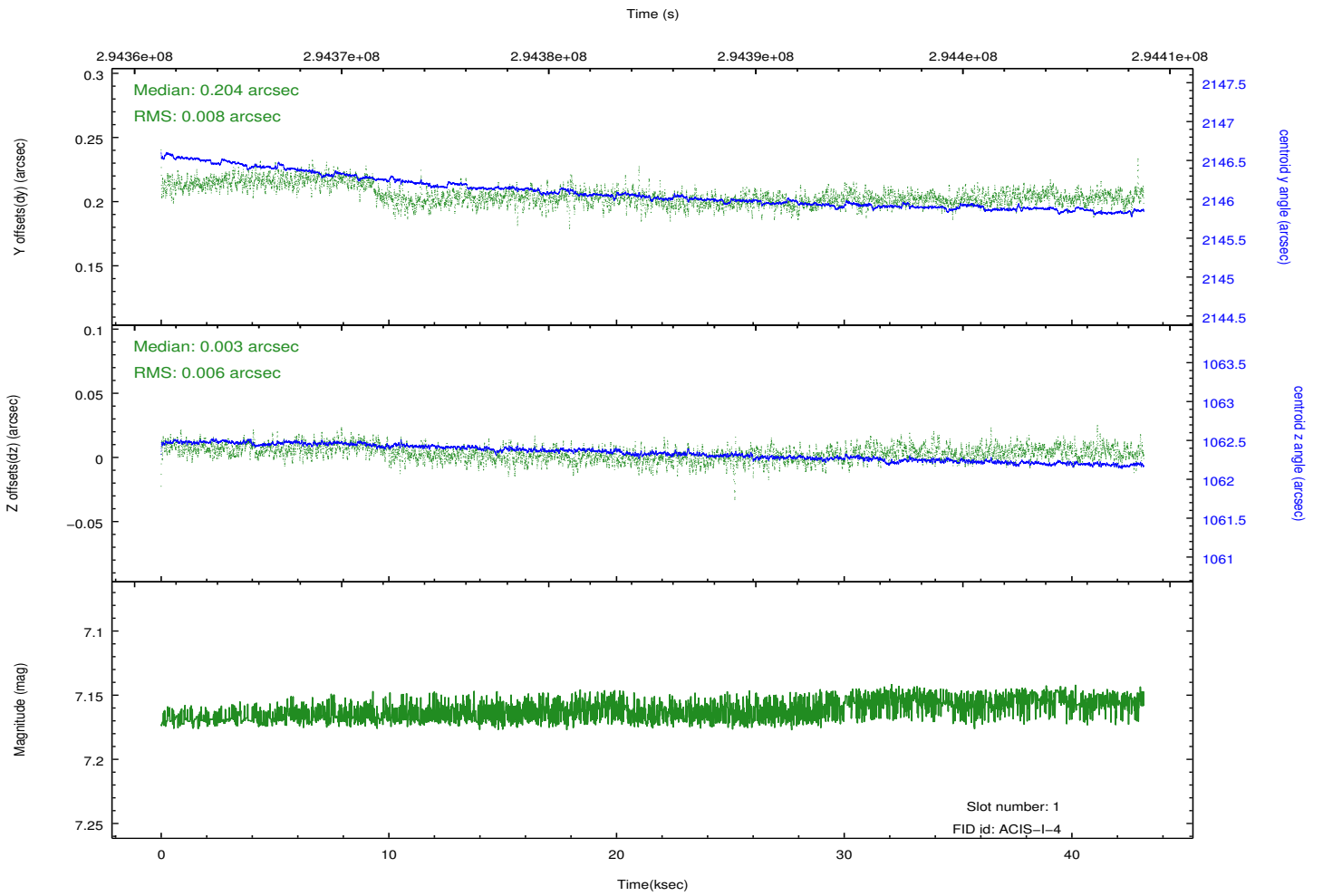
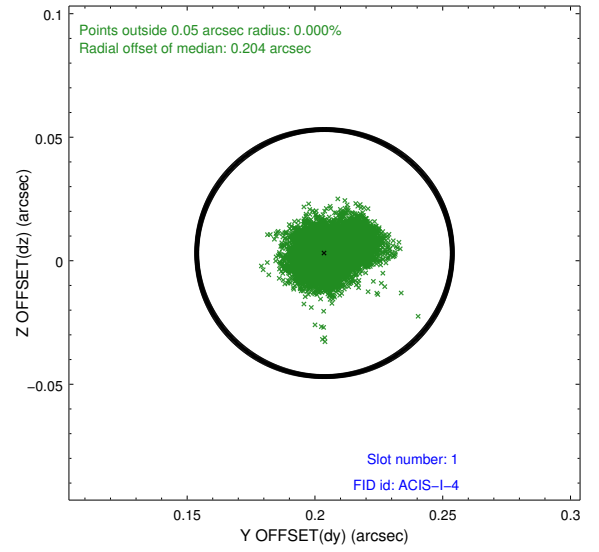
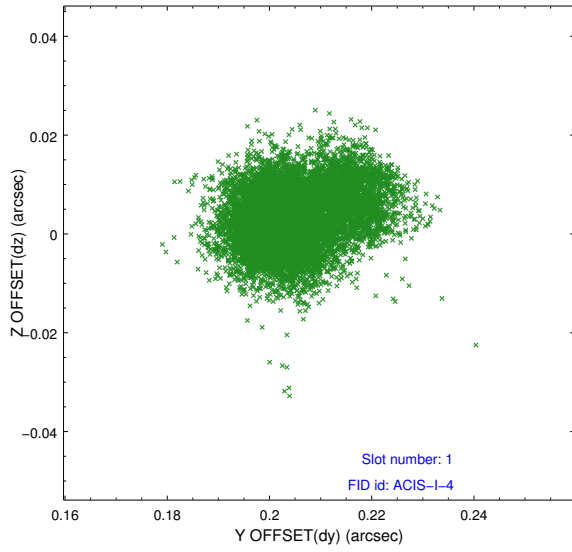


2.5 FID Slots

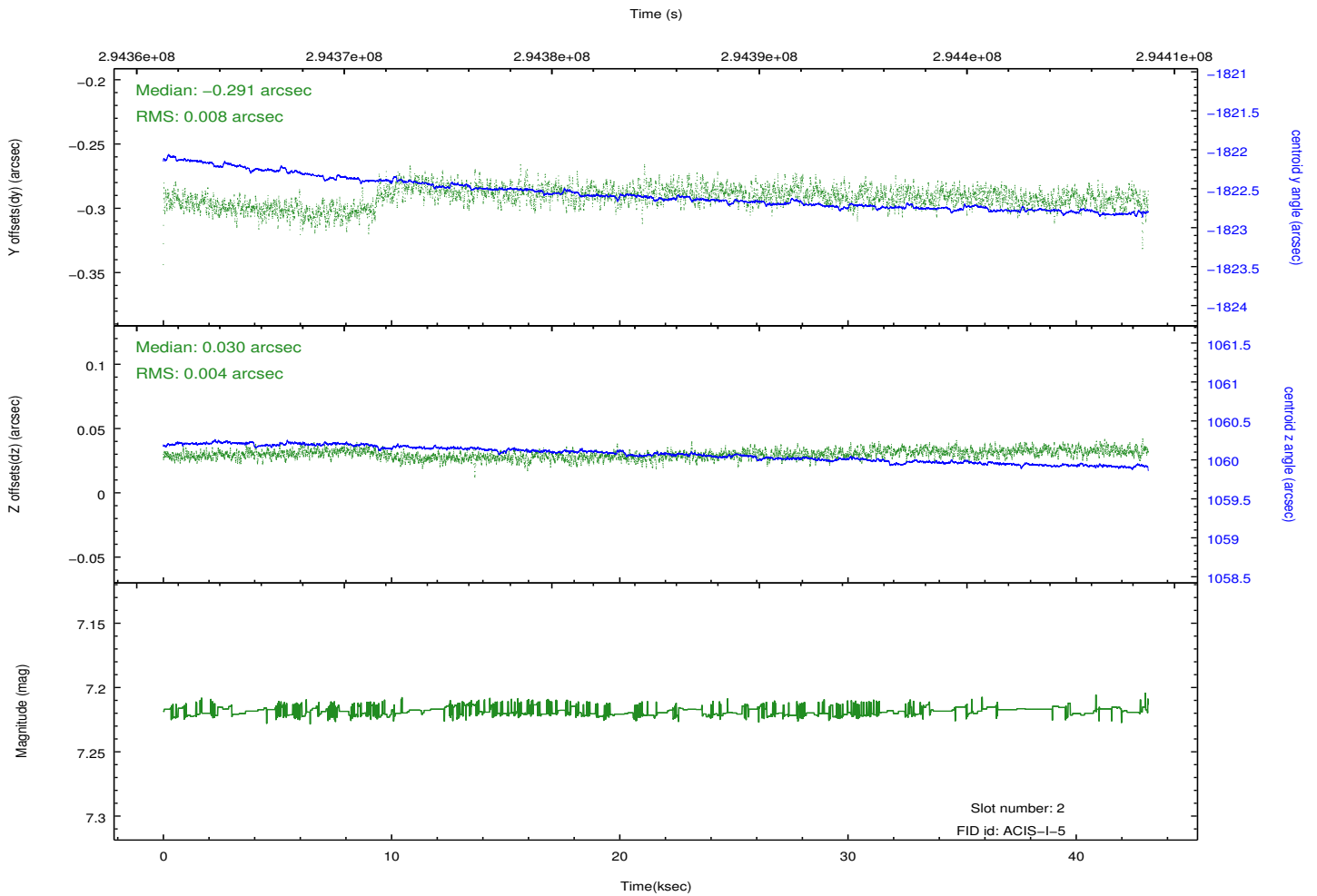
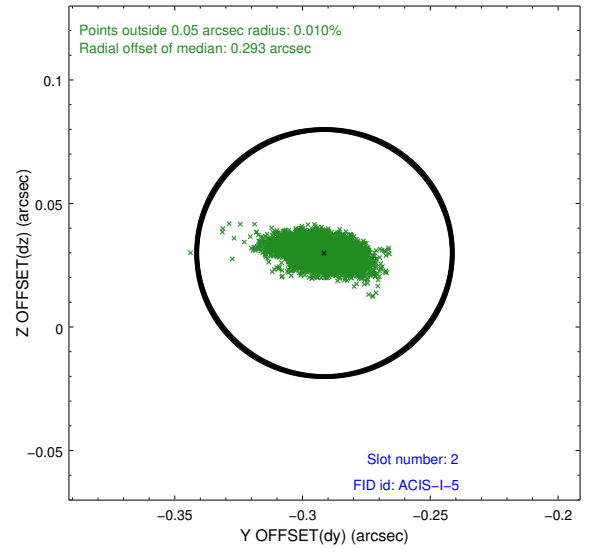
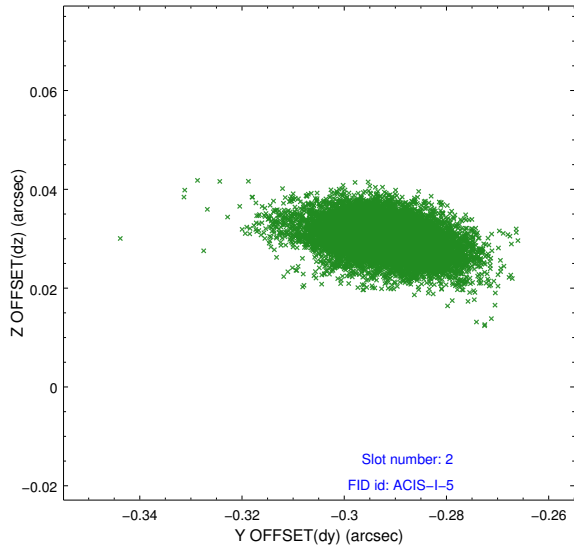
2.5.1 Slot 0



2.5.2 Slot 1



2.5.3 Slot 2



A Summary

A.1 Status

V&V Scientist	Jen Lauer
V&V Date (YYYY-MM-DD)	2012.07.05
V&V Edition	1
V&V Disposition and Status	OK
V&V Charge Time	43.1456773

A.2 Comments