

V&V Reference Report

L2 ASCDS Version : 8.4.4

Observation 8003 - L2 Version 3
Chandra X-Ray Center

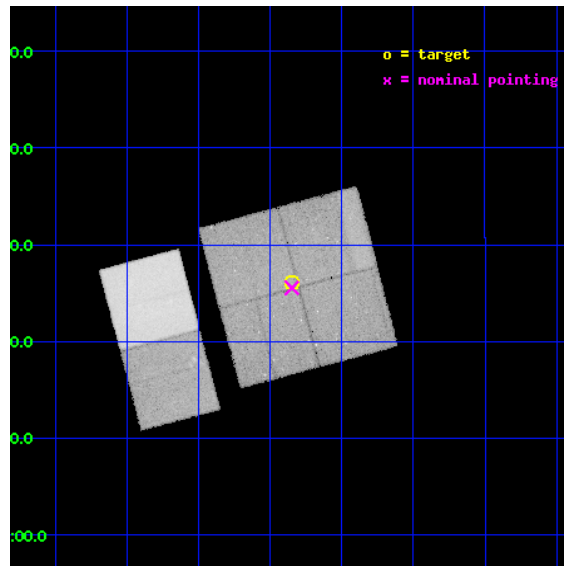
L2 Processing Date : Apr 22 2012

Contents

1	Front	2
2	OBI	3
2.1	OBI	3
2.1.1	Images	3
2.1.2	Bias	3
2.1.3	Parameters	4
2.1.4	Events	4
2.2	Compared Parameters	5
2.3	Aspect	6
2.4	Star Slots	9
2.4.1	Slot 3	9
2.4.2	Slot 4	10
2.4.3	Slot 5	11
2.4.4	Slot 6	12
2.4.5	Slot 7	13
2.5	FID Slots	14
2.5.1	Slot 0	14
2.5.2	Slot 1	15
2.5.3	Slot 2	16
A	Summary	17
A.1	Status	17
A.2	Comments	17

1 Front

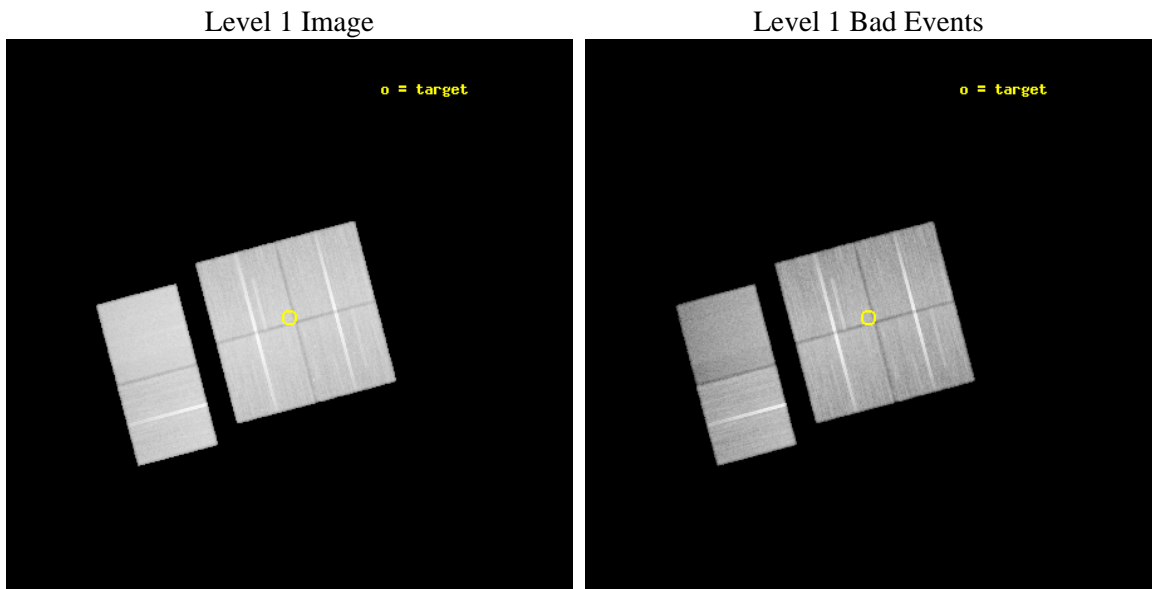
seq_num	900547	Sequence number
obs_id	8003	Observation id
title	THE CHANDRA-COSMOS SURVEY	Proposal title
observer	Dr. Martin Elvis	Principal investigator
object	C-COSMOS2-5	Source name
dtcycle	0	
cycle	P	events from which exps? Prim/Second/Both
ra_targ	149.961796	Observer's specified target RA [deg]
dec_targ	2.433781	Observer's specified target Dec [deg]
ra_nom	149.96214718059	Nominal RA [deg]
dec_nom	2.4257043833174	Nominal Dec [deg]
roll_nom	255.2086740319	Nominal Roll [deg]
revision	3	Processing version of data
ontime	47638.317811966	Sum of GTIs [s]
livetime	47035.09274748	Livetime [s]
ontime0	47641.558802366	Sum of GTIs [s]
ontime1	47641.558802366	Sum of GTIs [s]
ontime2	47635.076801956	Sum of GTIs [s]
ontime3	47638.317811966	Sum of GTIs [s]
ontime6	47641.558822274	Sum of GTIs [s]
ontime7	47644.799822569	Sum of GTIs [s]
l2events	424659	Number of level 2 events



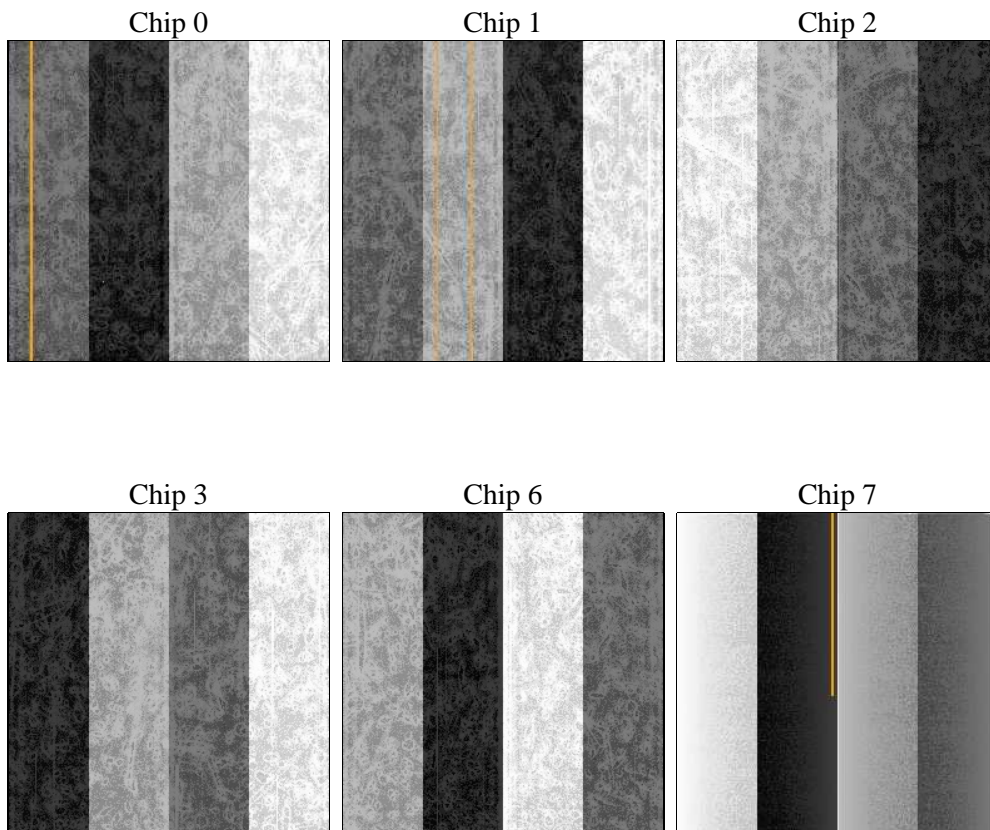
2 OBI

2.1 OBI

2.1.1 Images



2.1.2 Bias



2.1.3 Parameters

obi_num	0	Obi number	sched_exp_time	47894.665000	[s] Scheduled observation exposure time
ascdsver	8.4.4	Processing system revision	ontime	47638.317811966	Sum of GTIs [s]
caldbver	4.4.9	 	ontime0	47641.558802366	Sum of GTIs [s]
date	2012-04-22T21:11:04	Date and time of file creation	ontime1	47641.558802366	Sum of GTIs [s]
revision	3	Processing version of data	ontime2	47635.076801956	Sum of GTIs [s]
			ontime3	47638.317811966	Sum of GTIs [s]
			ontime6	47641.558822274	Sum of GTIs [s]
			ontime7	47644.799822569	Sum of GTIs [s]
			l1events	2332759	Number of level 1 events

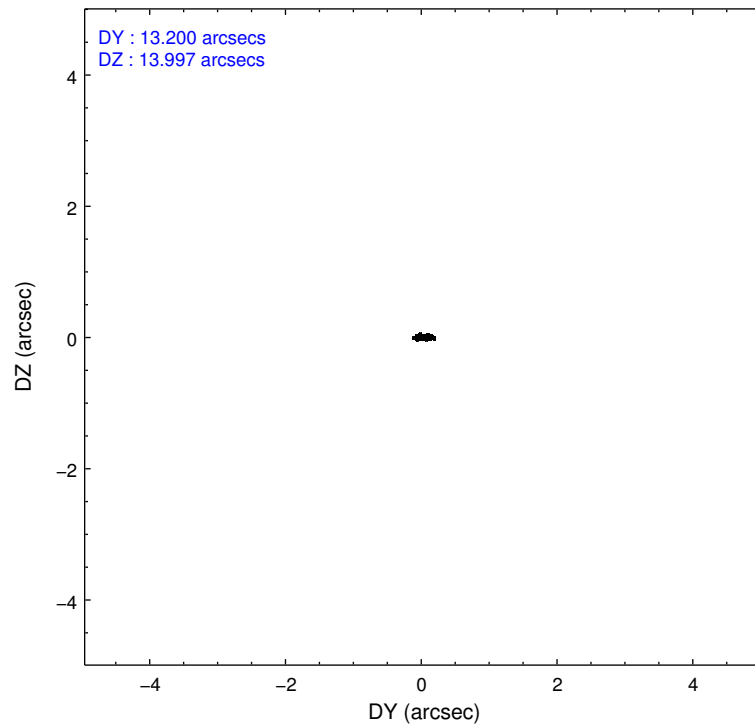
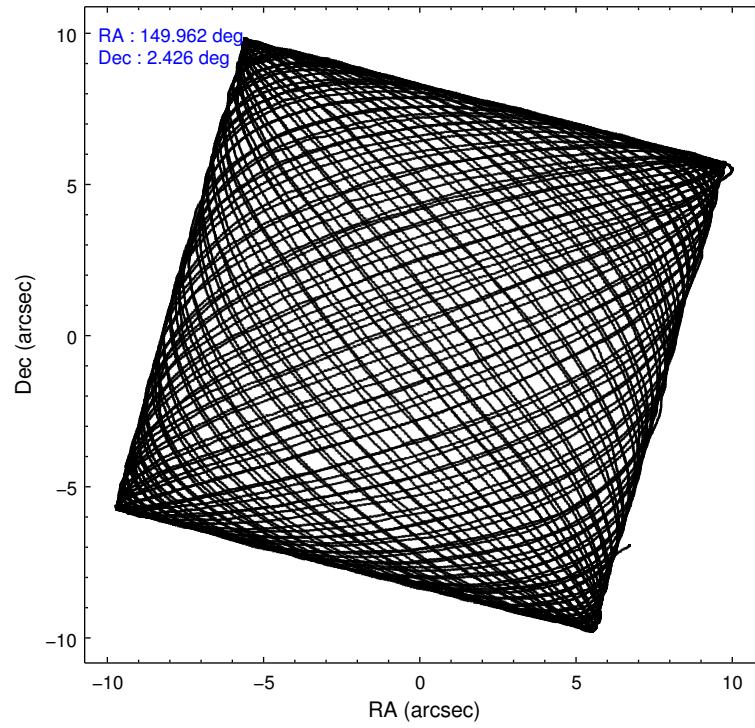
2.1.4 Events

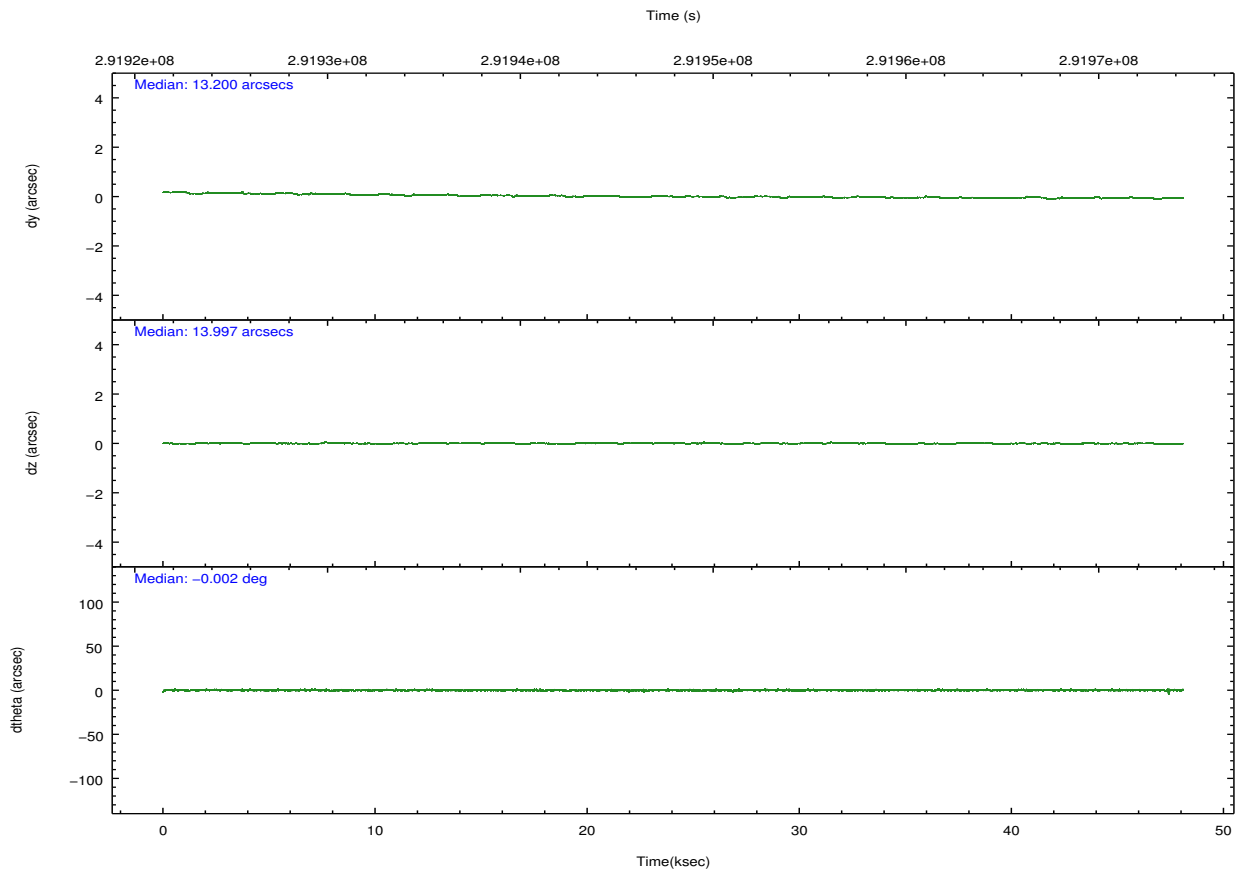
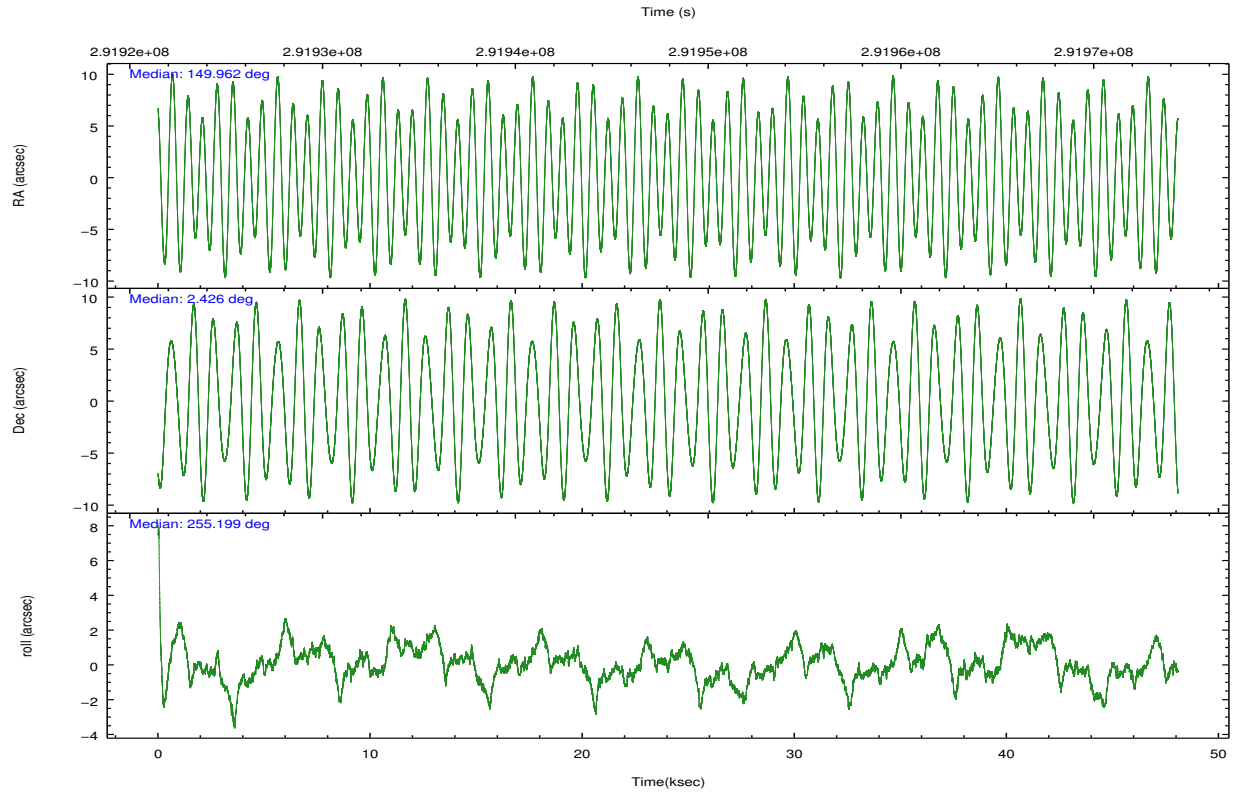
	ccd 0	ccd 1	ccd 2	ccd 3	ccd 6	ccd 7		ccd 0	ccd 1	ccd 2	ccd 3	ccd 6	ccd 7
level 1 events	355188	357288	399894	379676	402928	437785	grade 0 events	21447	25665	22225	21297	24406	20162
rejected events	307173	301828	351822	332894	349712	224271		6%	7%	5%	5%	6%	4%
rejected %	86%	84%	87%	87%	86%	51%	grade 1 events	238	278	276	266	251	517
								0%	0%	0%	0%	0%	0%
							grade 2 events	10002	10919	9606	8936	10157	41308
								2%	3%	2%	2%	2%	9%
							grade 3 events	4436	4954	4437	4415	4584	18758
								1%	1%	1%	1%	1%	4%
							grade 4 events	4295	4899	4464	4421	4612	18484
								1%	1%	1%	1%	1%	4%
							grade 5 events	12457	13848	12167	14668	15305	43286
								3%	3%	3%	3%	3%	9%
							grade 6 events	7842	9035	7350	7719	9464	114834
								2%	2%	1%	2%	2%	26%
							grade 7 events	294471	287690	339369	317954	334149	180436
								82%	80%	84%	83%	82%	41%

2.2 Compared Parameters

Parameter	Planned	Actual	Parameter	Planned	Actual
Instrument	ACIS	ACIS	Obspar format version number	7	7
Detector	ACIS-012367	ACIS-012367	Obspar file type	PREDICTED	ACTUAL
Grating	NONE	NONE	Obspar update status	NONE	UPDATED
Data mode	VFAINT	VFAINT	CCD I0 on	Y	Y
Observation mode	POINTING	POINTING	CCD I1 on	Y	Y
[deg] Pointing RA	149.954819	149.9621471805864	CCD I2 on	Y	Y
[deg] Pointing Dec	2.452210	2.425704383317353	CCD I3 on	Y	Y
[deg] Pointing Roll	255.000299	255.2086740319026	CCD S0 on	N	N
[mm] SIM focus pos	-0.782348	-0.7809083437167272	CCD S1 on	N	N
[mm] SIM defocus	0	0.001439871863259334	CCD S2 on	O1	Y
[mm] SIM translation stage pos	-233.592463	-233.5874344608287	CCD S3 on	O2	Y
[mm] SIM translation stage offset	0	-0.005018542100998502	CCD S4 on	N	N
[s] Observation start time (MET)	291924068.184000	291923683.90656	CCD S5 on	N	N
Observation start date	2007-04-02T18:00:03	2007-04-02T17:54:43	Number of optional ACIS chips dropped	0	0
[s] Observation end time (MET)	291971962.184000	291972198.69637	On-chip summing requested	N	N
Observation end date	2007-04-03T07:18:17	2007-04-03T07:23:18	Subarray requested	NONE	NONE
Read mode	TIMED	TIMED	Alternating exposures requested	N	N
			[s] Primary exposure time	0.000000	3.2

2.3 Aspect



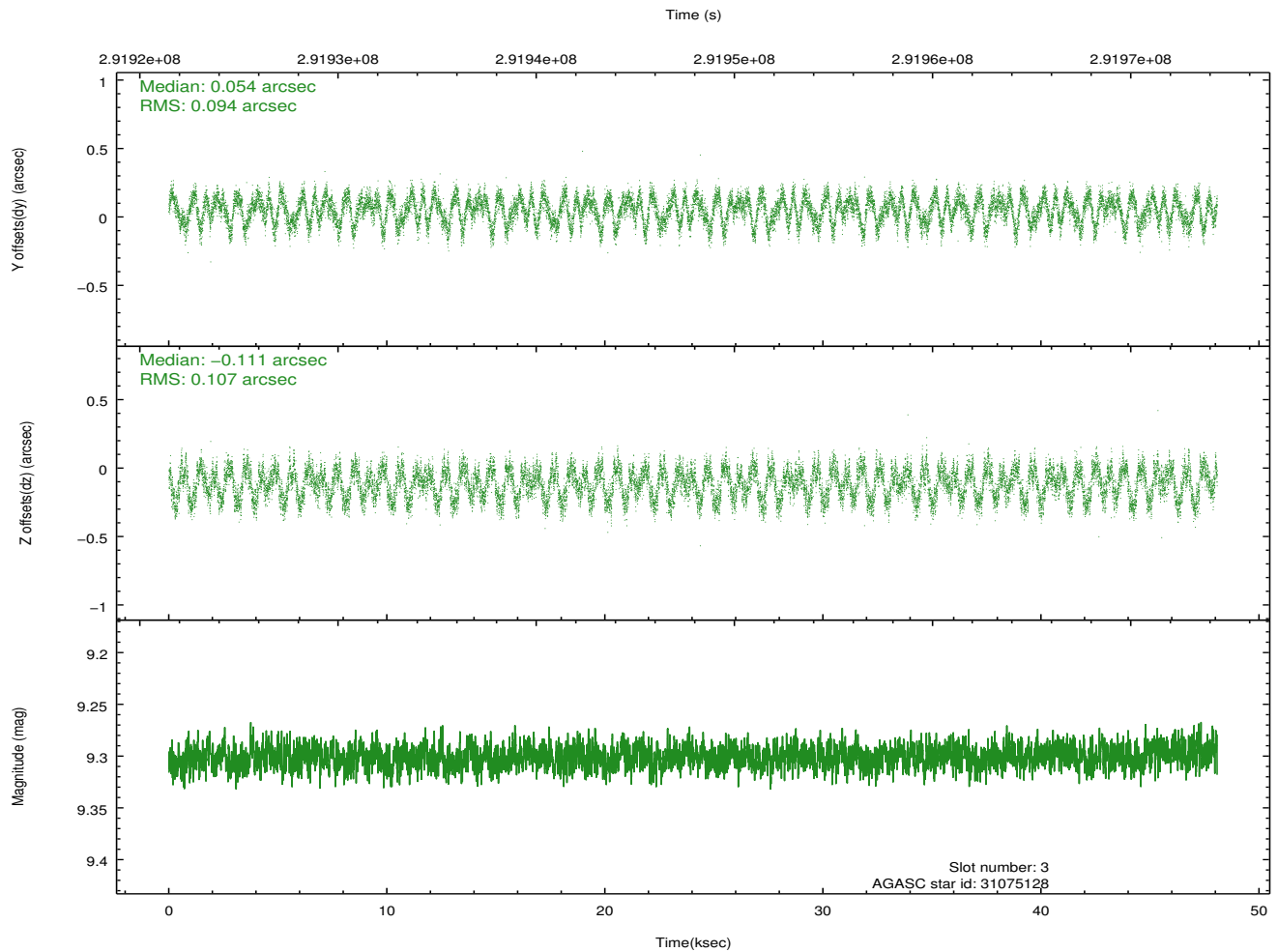
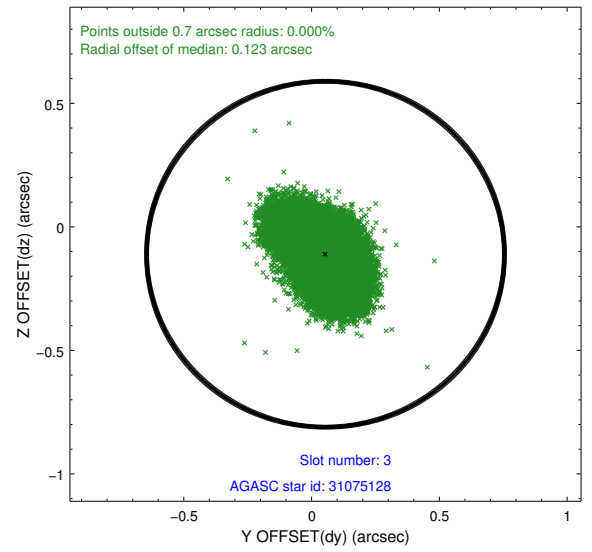
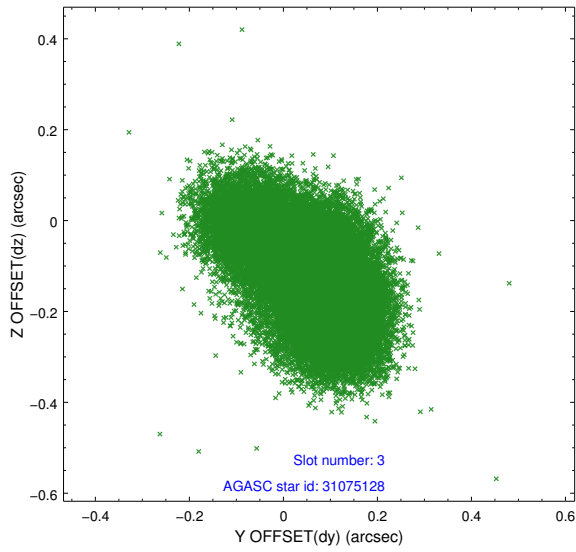


Slot Statistics

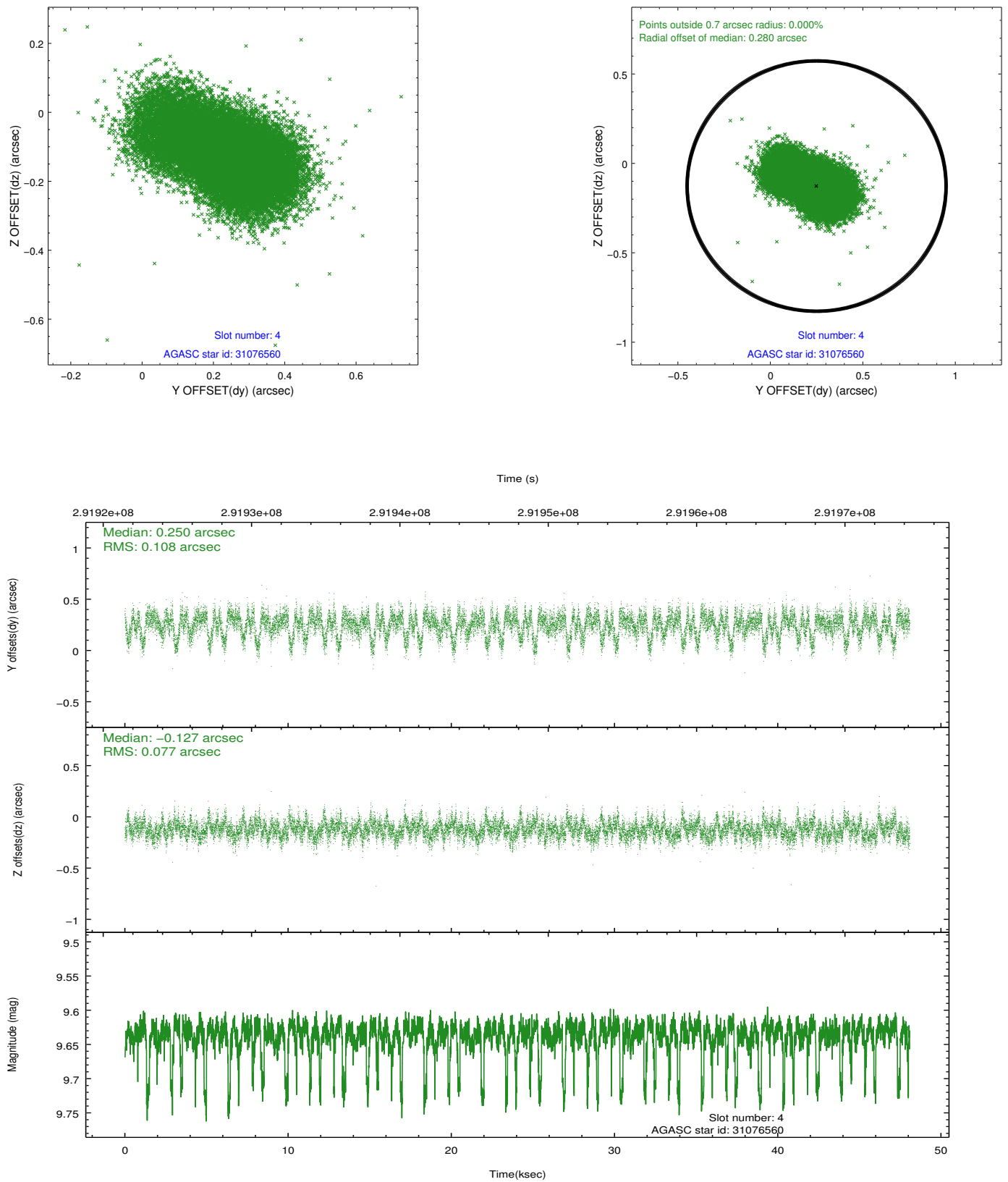
slot	status	id	mag	n_pts	med_dy	med_dz	dr1	dr2	ra	dec	mean_y	mean_z
0	FID	ACIS-I-1	7.24	11727	0.033	0.012	0.006	0.011	0.000000	0.000000	926.33	-837.55
1	FID	ACIS-I-5	7.23	11725	-0.216	0.040	0.007	0.011	0.000000	0.000000	-1822.05	1059.95
2	FID	ACIS-I-6	7.24	11727	0.093	0.018	0.007	0.012	0.000000	0.000000	391.93	1704.43
3	GUIDE	31075128	9.30	23430	0.054	-0.111	0.156	0.237	149.584516	2.364347	650.65	-1204.50
4	GUIDE	31076560	9.64	23384	0.250	-0.127	0.137	0.242	149.884782	2.009277	1606.25	169.86
5	GUIDE	31463496	9.47	23431	-0.049	0.071	0.108	0.171	149.845020	2.964001	-1677.05	-858.12
6	GUIDE	31983336	8.59	23438	-0.308	0.080	0.076	0.121	150.429924	2.291234	116.80	1801.02
7	GUIDE	32375384	9.99	23415	0.076	0.107	0.139	0.240	150.238117	2.622063	-854.16	825.79

2.4 Star Slots

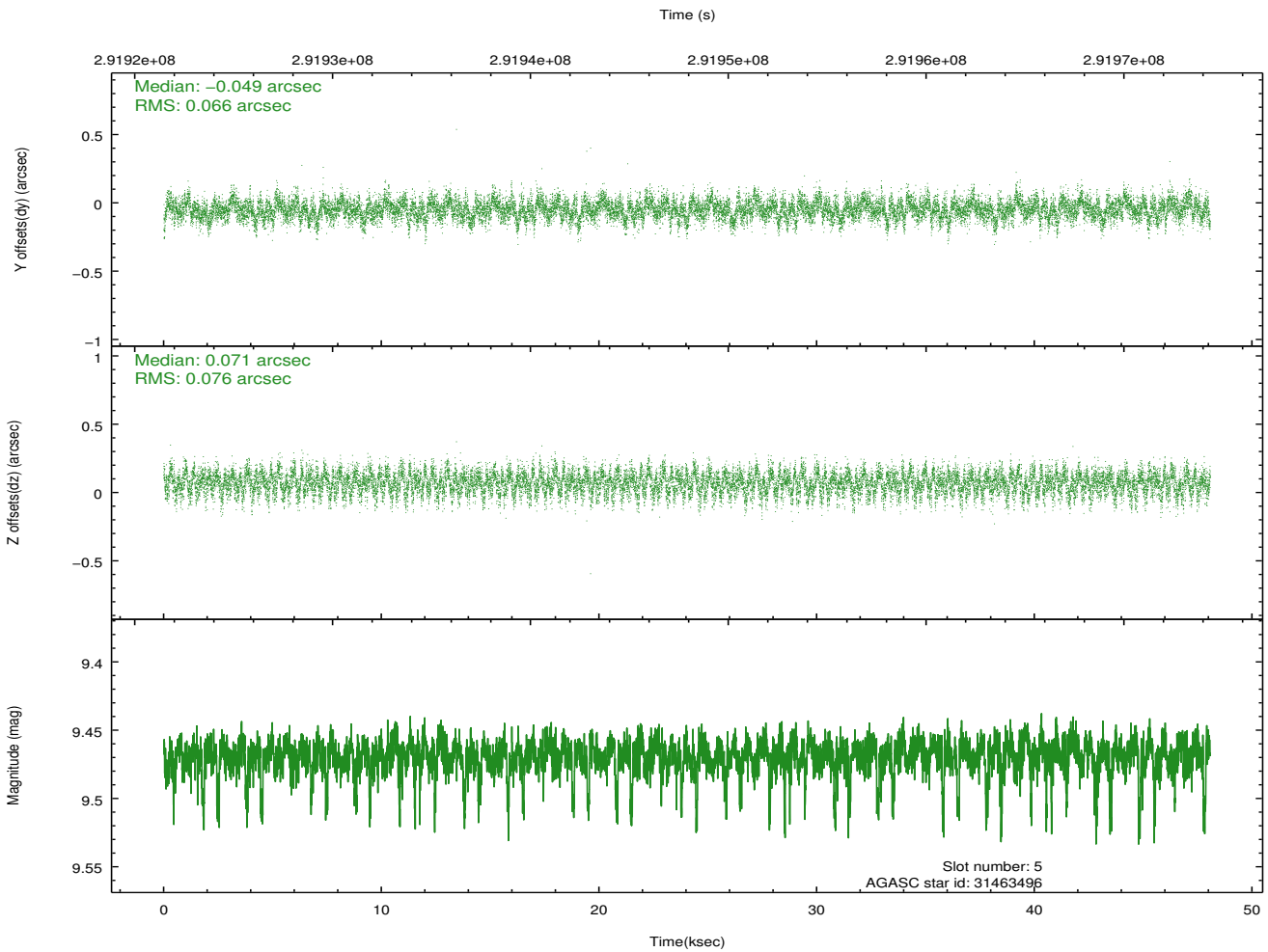
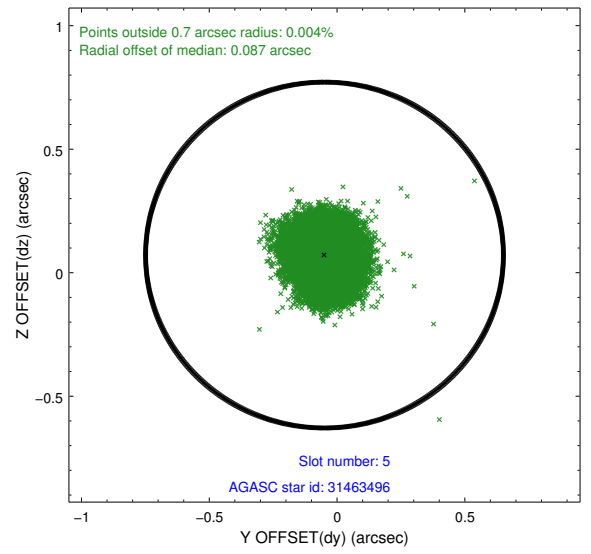
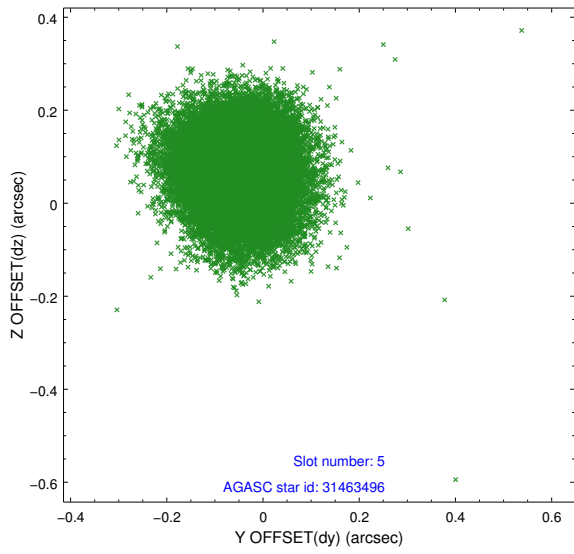
2.4.1 Slot 3



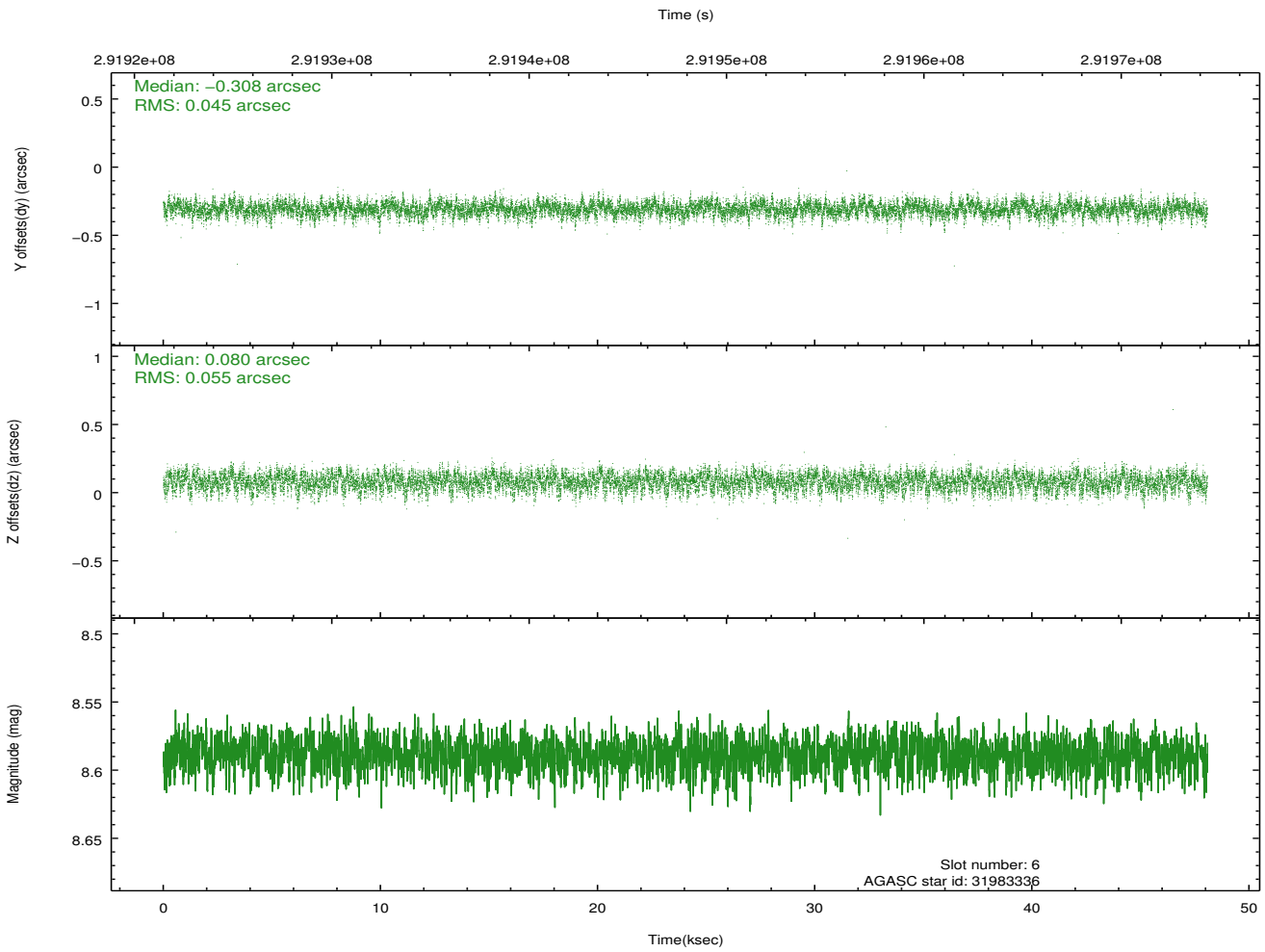
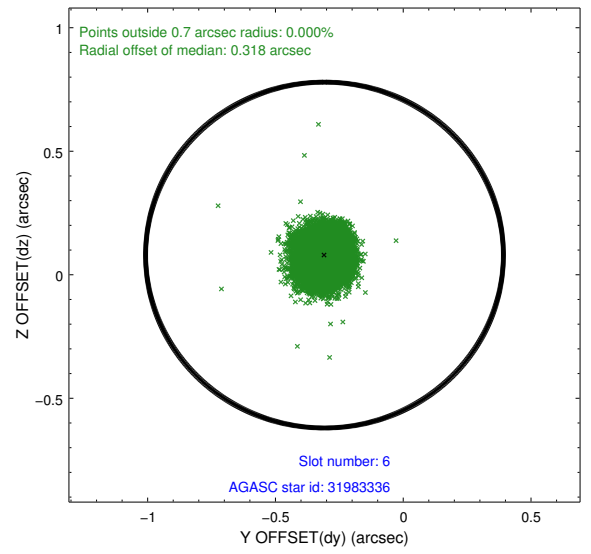
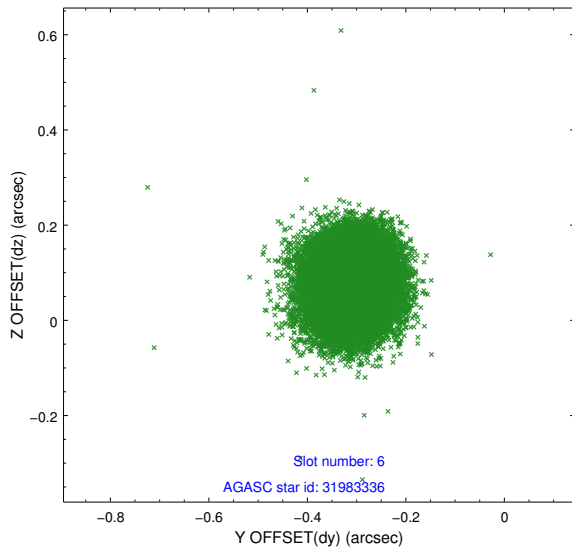
2.4.2 Slot 4



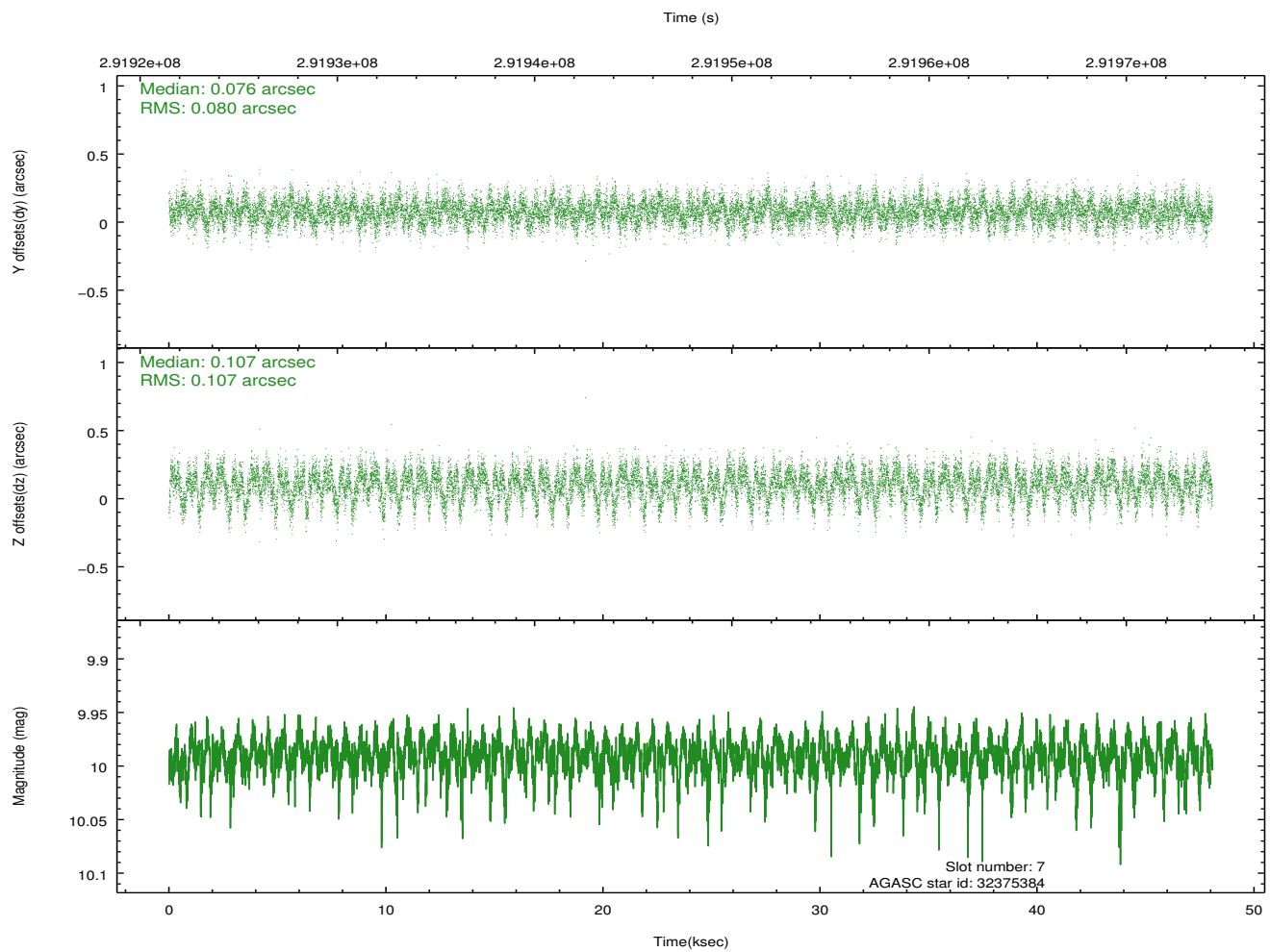
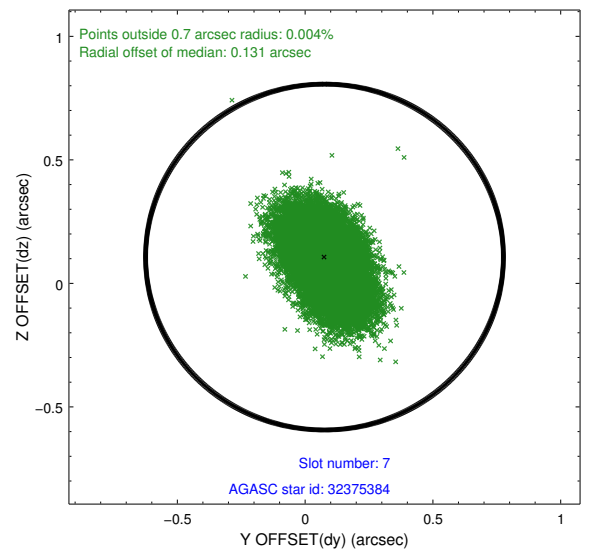
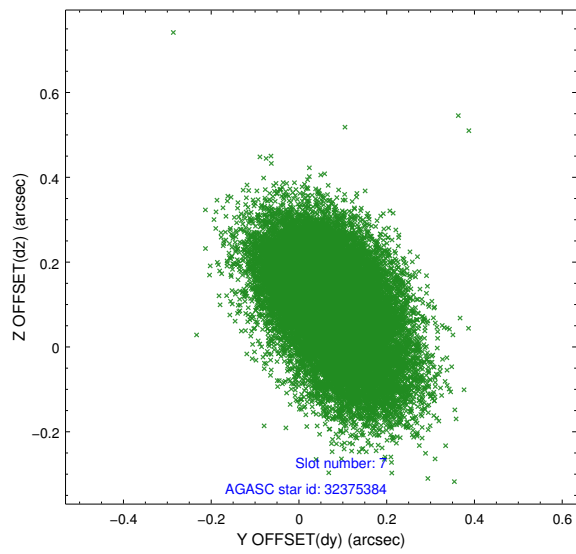
2.4.3 Slot 5



2.4.4 Slot 6

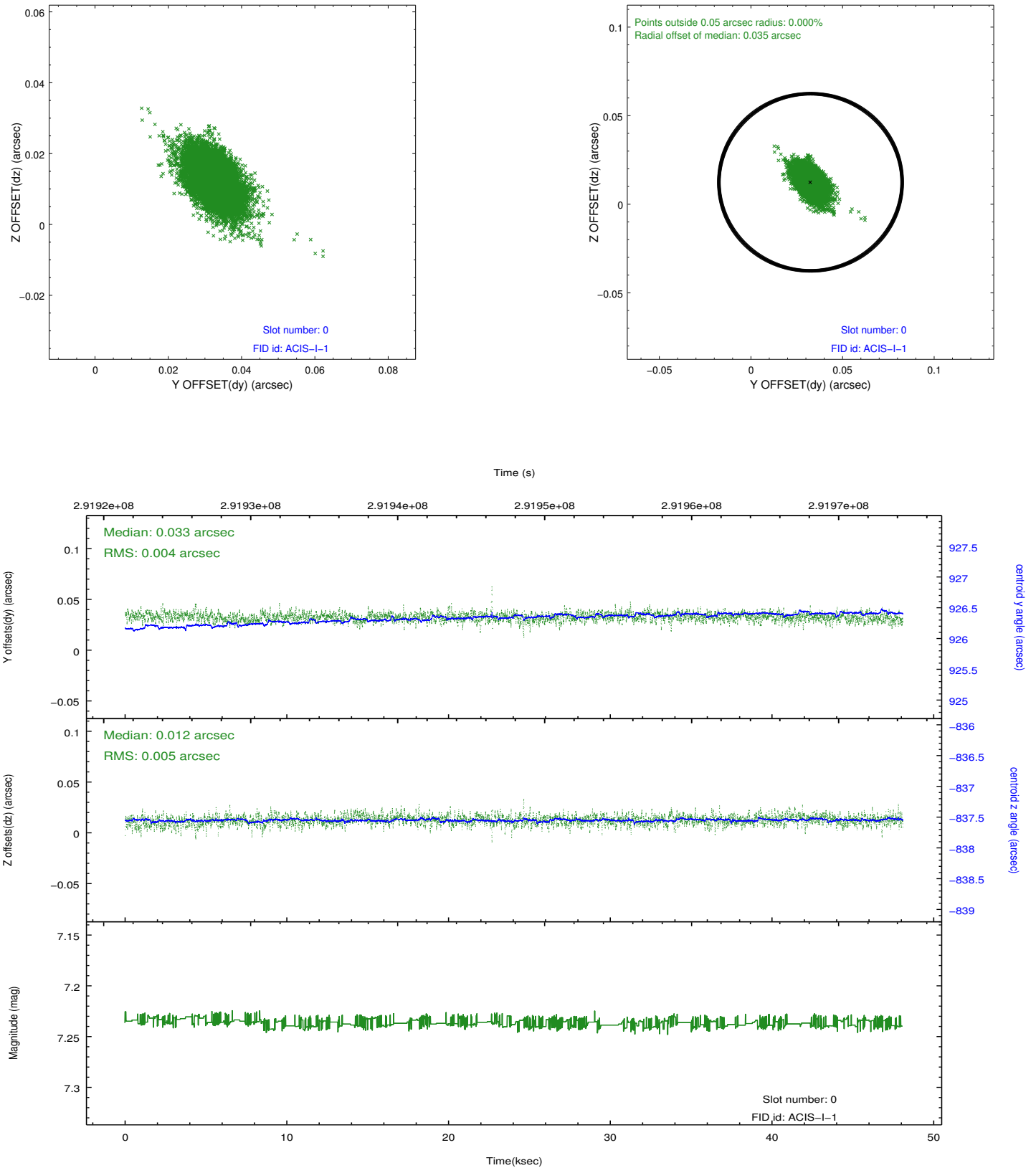


2.4.5 Slot 7

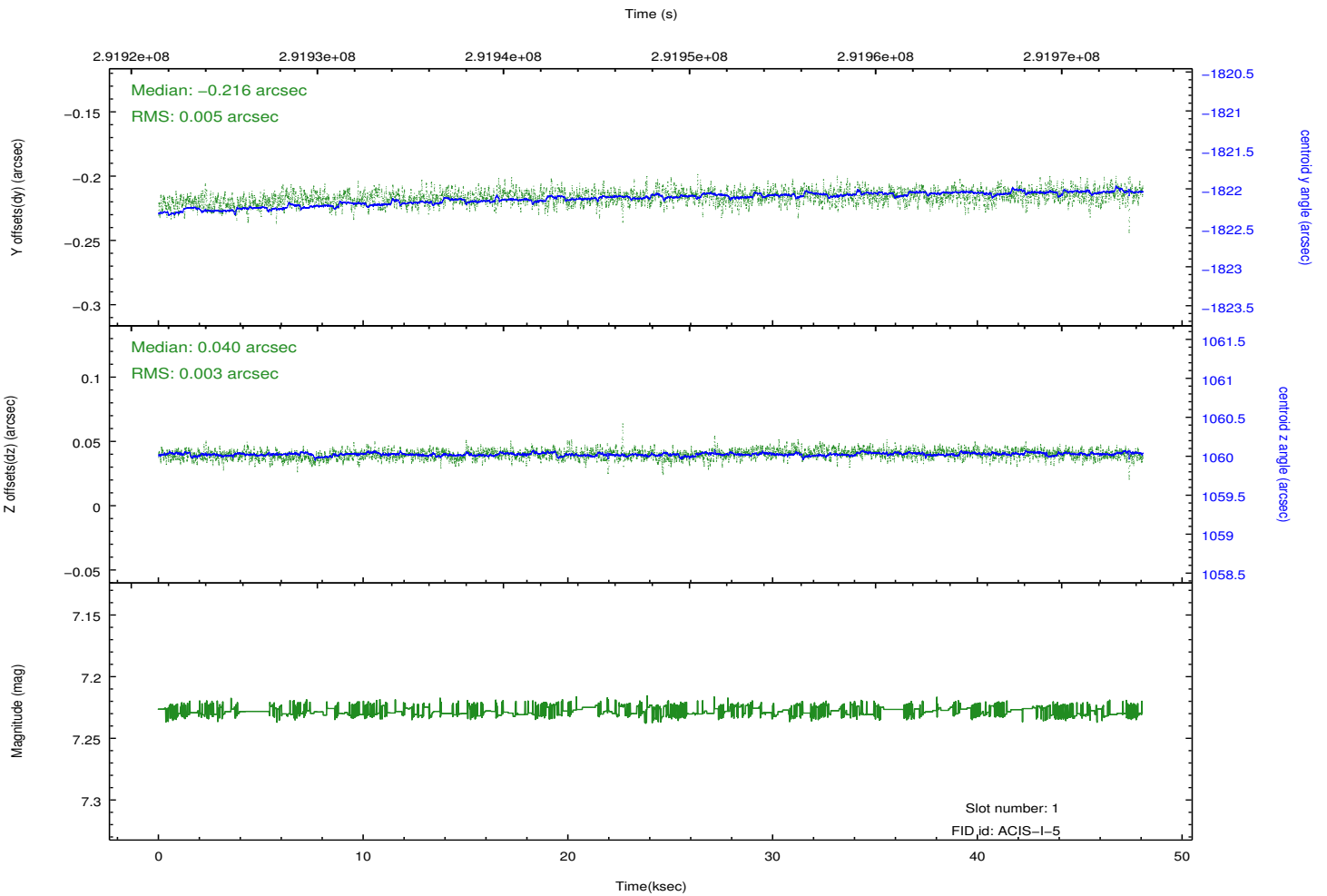
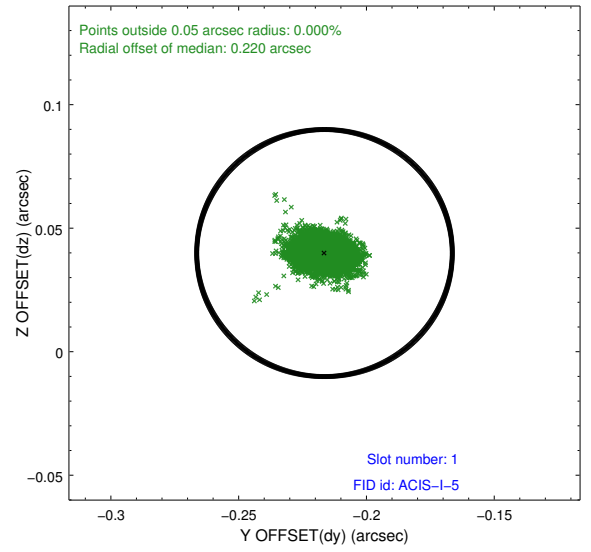
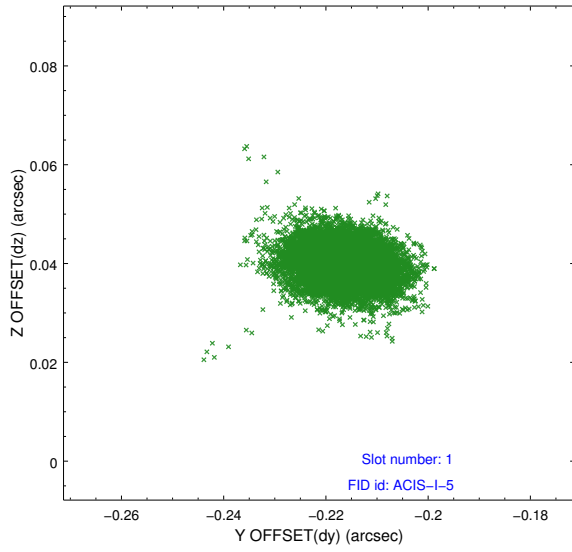


2.5 FID Slots

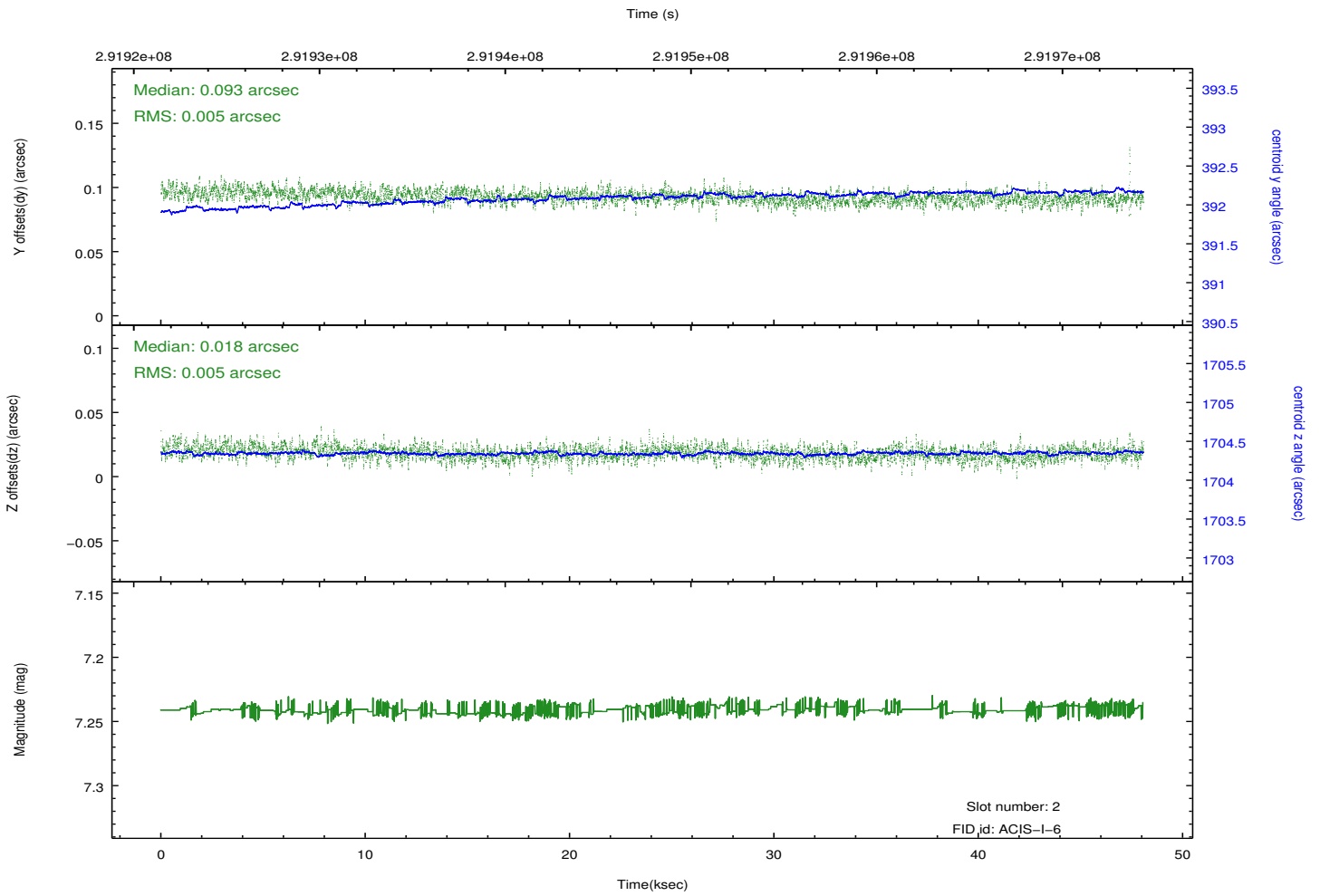
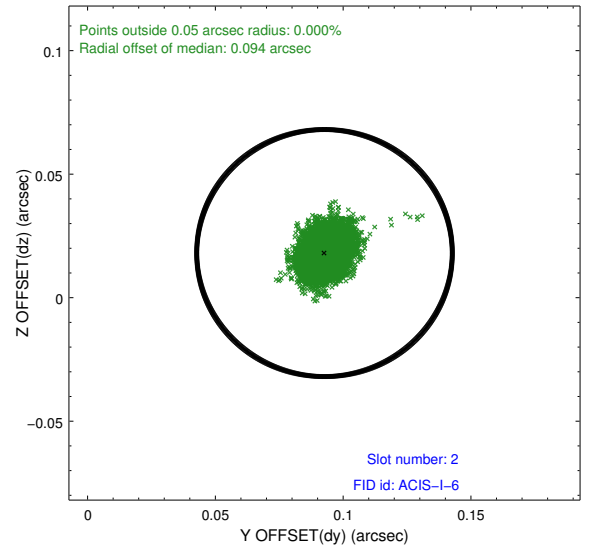
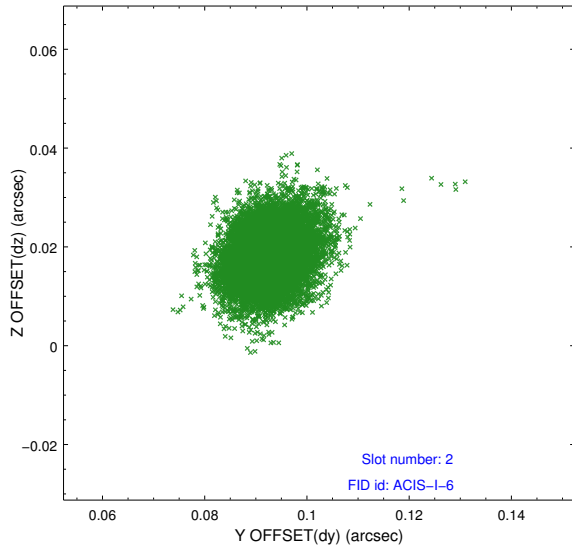
2.5.1 Slot 0



2.5.2 Slot 1



2.5.3 Slot 2



A Summary

A.1 Status

V&V Scientist	Jen Lauer
V&V Date (YYYY-MM-DD)	2012.04.23
V&V Edition	1
V&V Disposition and Status	OK
V&V Charge Time	47.6383178

A.2 Comments

Preferred roll angle constraint met. There is a slight increase and subsequent decrease in total count rate between 40 and 42 ksec into the observation. The increase is approximately 5 ct/s. This change in the count rate appears to correspond to a high and unsettled radiation environment at that time. It is believed the elevated count rate is due to the radiation environment.