

# V&V Reference Report

## L2 ASCDS Version : 8.4.4

Observation 8013 - L2 Version 3  
Chandra X-Ray Center

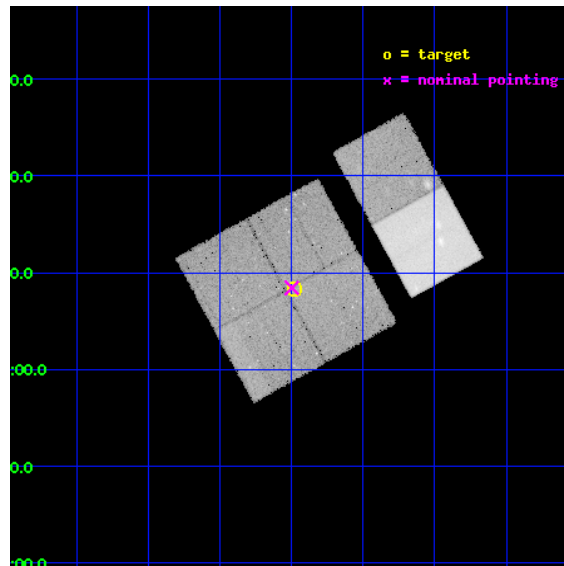
L2 Processing Date : Apr 17 2012

## Contents

<b>1</b>	<b>Front</b>	<b>2</b>
<b>2</b>	<b>OBI</b>	<b>3</b>
2.1	OBI . . . . .	3
2.1.1	Images . . . . .	3
2.1.2	Bias . . . . .	3
2.1.3	Parameters . . . . .	4
2.1.4	Events . . . . .	4
2.2	Compared Parameters . . . . .	5
2.3	Aspect . . . . .	6
2.4	Star Slots . . . . .	9
2.4.1	Slot 3 . . . . .	9
2.4.2	Slot 4 . . . . .	10
2.4.3	Slot 5 . . . . .	11
2.4.4	Slot 6 . . . . .	12
2.4.5	Slot 7 . . . . .	13
2.5	FID Slots . . . . .	14
2.5.1	Slot 0 . . . . .	14
2.5.2	Slot 1 . . . . .	15
2.5.3	Slot 2 . . . . .	16
<b>A</b>	<b>Summary</b>	<b>17</b>
A.1	Status . . . . .	17
A.2	Comments . . . . .	17

# 1 Front

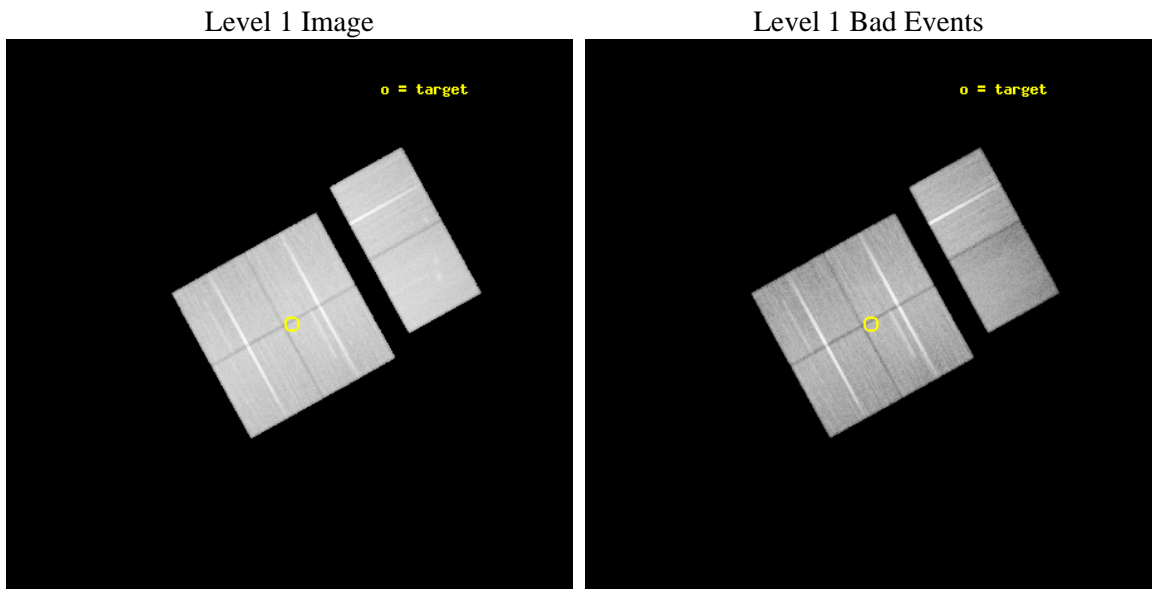
seq_num	900557	Sequence number
obs_id	8013	Observation id
title	THE CHANDRA-COSMOS SURVEY	Proposal title
observer	Dr. Martin Elvis	Principal investigator
object	C-COSMOS4-4	Source name
dtcycle	0	&#160
cycle	P	events from which exps? Prim/Second/Both
ra_targ	149.995796	Observer's specified target RA [deg]
dec_targ	2.1376	Observer's specified target Dec [deg]
ra_nom	149.99944081785	Nominal RA [deg]
dec_nom	2.1405869467521	Nominal Dec [deg]
roll_nom	61.071604714285	Nominal Roll [deg]
revision	3	Processing version of data
ontime	48732.717807949	Sum of GTIs [s]
livetime	48115.634791745	Livetime [s]
ontime0	48735.958867848	Sum of GTIs [s]
ontime1	48729.476767778	Sum of GTIs [s]
ontime2	48735.958808303	Sum of GTIs [s]
ontime3	48732.717807949	Sum of GTIs [s]
ontime6	48735.958798349	Sum of GTIs [s]
ontime7	48739.199818492	Sum of GTIs [s]
l2events	331660	Number of level 2 events



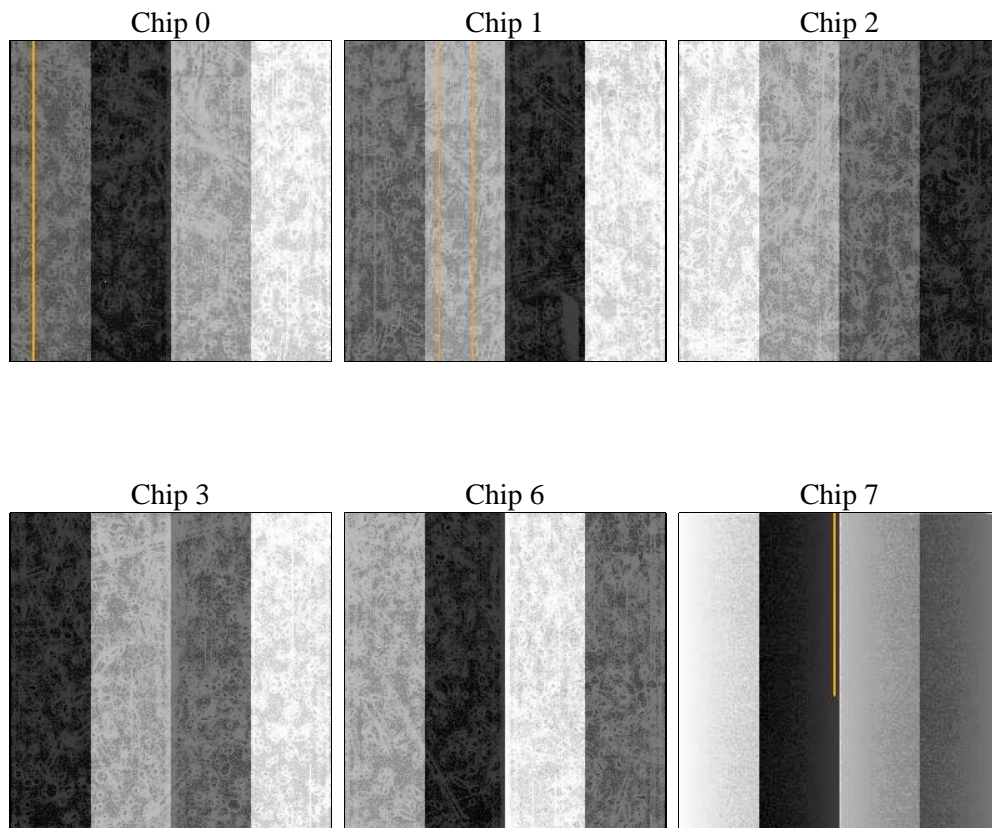
## 2 OBI

### 2.1 OBI

#### 2.1.1 Images



#### 2.1.2 Bias



### 2.1.3 Parameters

obi_num	0	Obi number	sched_exp_time	49000.000000	[s] Scheduled observation exposure time
ascdsver	8.4.4	Processing system revision	ontime	48732.717807949	Sum of GTIs [s]
caldbver	4.4.9	&#160	ontime0	48735.958867848	Sum of GTIs [s]
date	2012-04-17T21:57:25	Date and time of file creation	ontime1	48729.476767778	Sum of GTIs [s]
revision	3	Processing version of data	ontime2	48735.958808303	Sum of GTIs [s]
			ontime3	48732.717807949	Sum of GTIs [s]
			ontime6	48735.958798349	Sum of GTIs [s]
			ontime7	48739.199818492	Sum of GTIs [s]
			l1events	2179411	Number of level 1 events

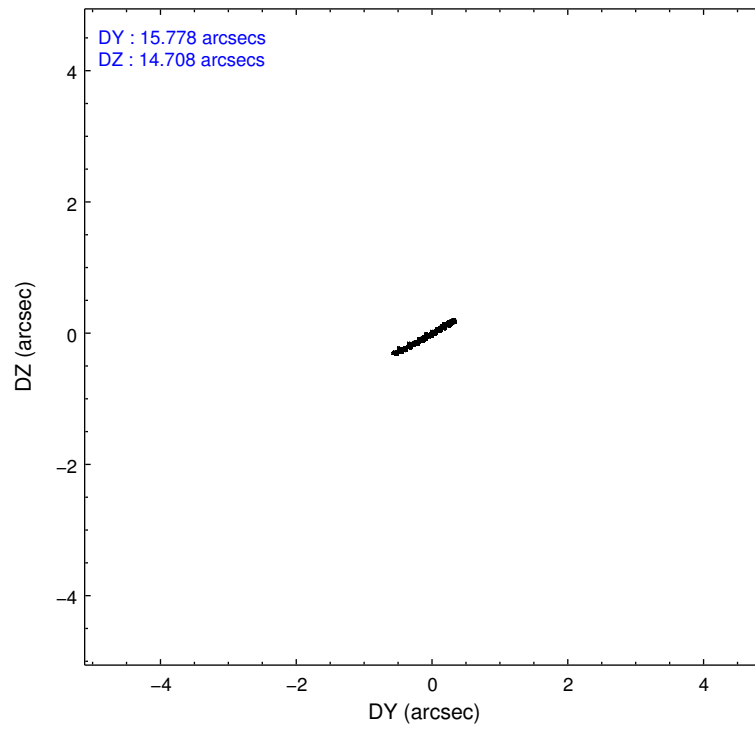
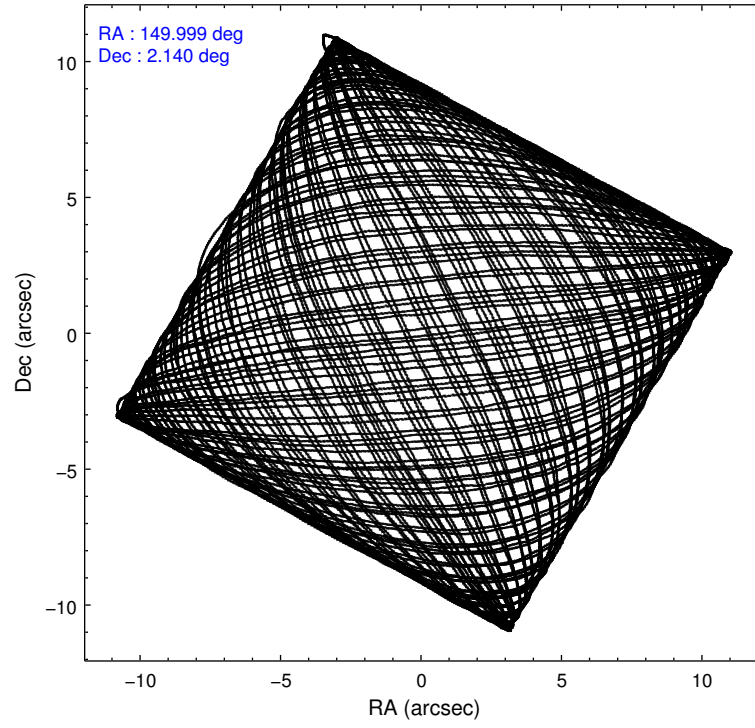
### 2.1.4 Events

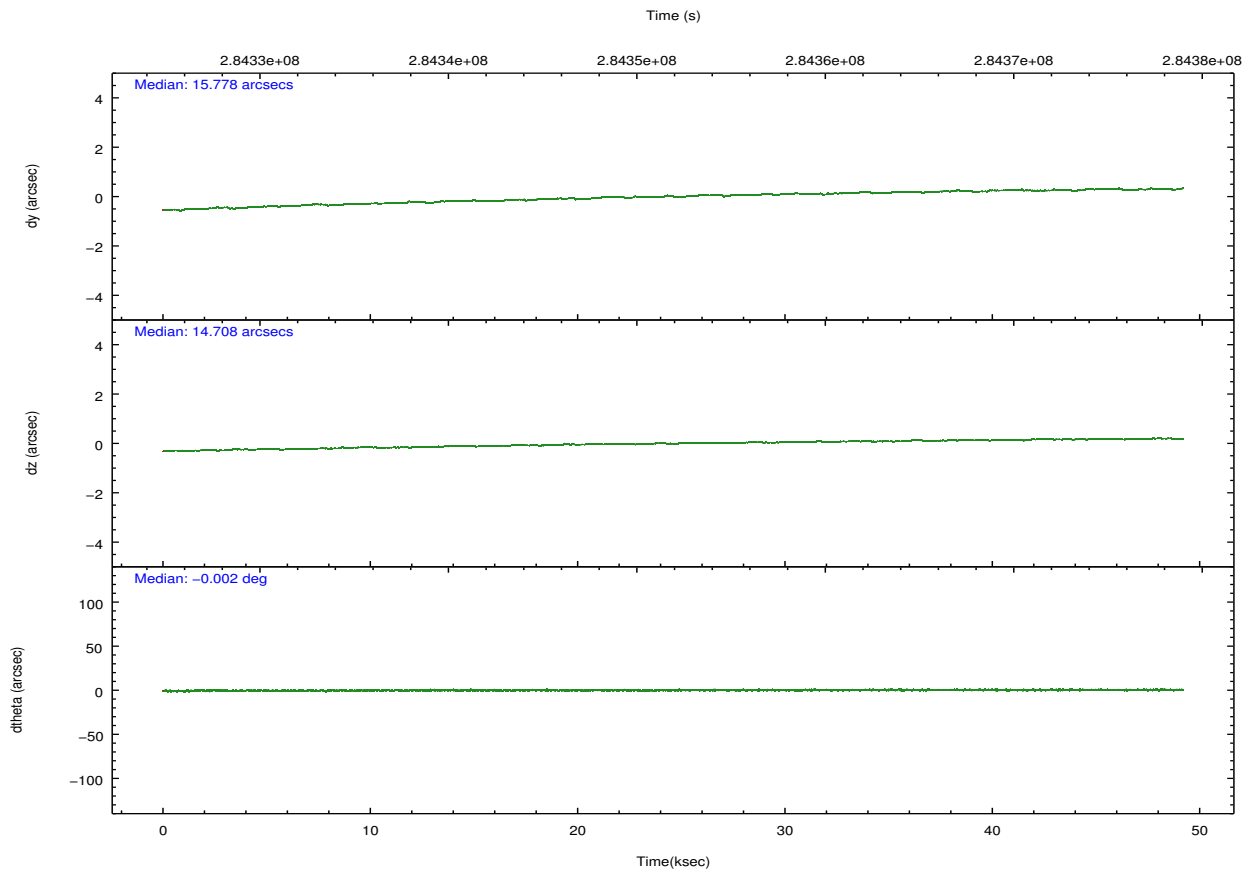
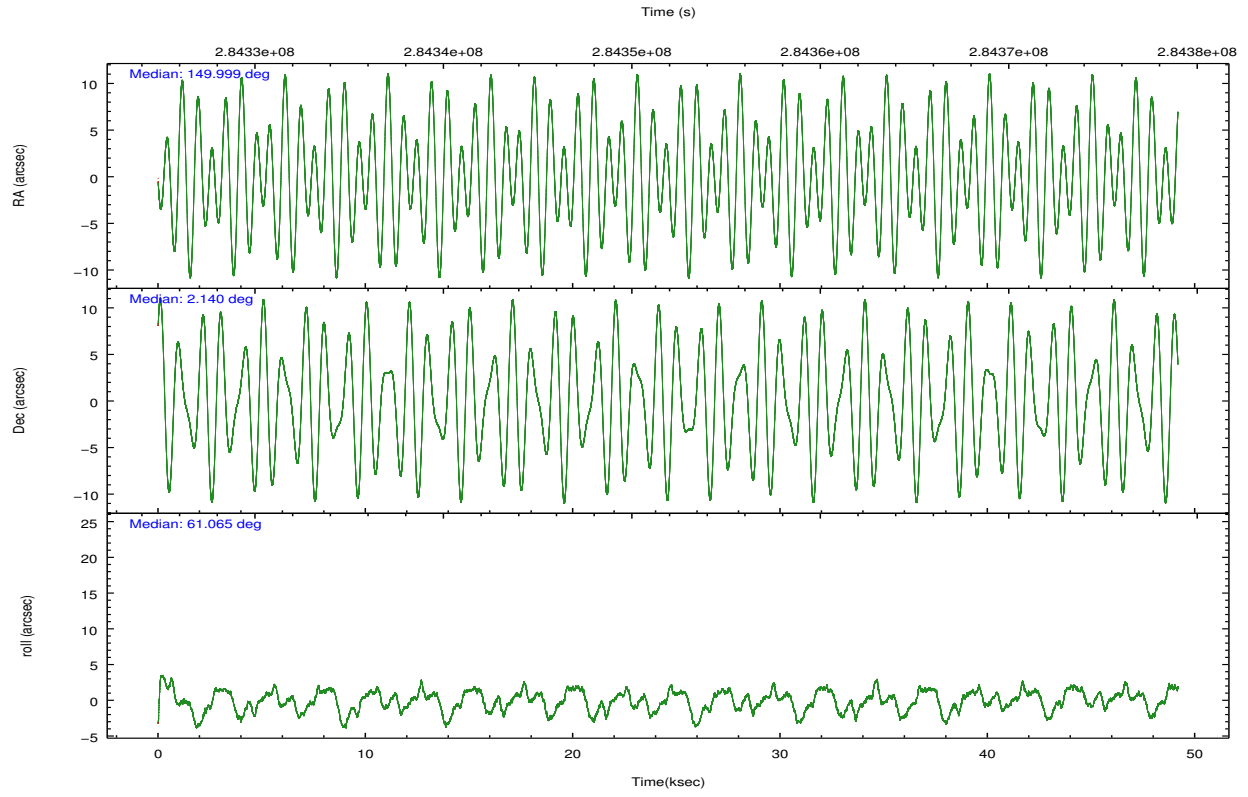
	ccd 0	ccd 1	ccd 2	ccd 3	ccd 6	ccd 7		ccd 0	ccd 1	ccd 2	ccd 3	ccd 6	ccd 7
level 1 events	329717	338893	374904	353655	378668	403574	grade 0 events	12505	14555	12777	11908	14052	17462
rejected events	294108	299089	339891	320147	339819	219091		3%	4%	3%	3%	3%	4%
rejected %	89%	88%	90%	90%	89%	54%	grade 1 events	158	191	227	210	197	519
								0%	0%	0%	0%	0%	0%
							grade 2 events	8325	8743	8189	7365	8525	37055
								2%	2%	2%	2%	2%	9%
							grade 3 events	4031	4329	3820	3837	4184	17014
								1%	1%	1%	1%	1%	4%
							grade 4 events	3880	4261	3875	3709	4014	16999
								1%	1%	1%	1%	1%	4%
							grade 5 events	12381	13584	11755	14328	15057	42399
								3%	4%	3%	4%	3%	10%
							grade 6 events	6873	7919	6364	6695	8083	95978
								2%	2%	1%	1%	2%	23%
							grade 7 events	281564	285311	327897	305603	324556	176148
								85%	84%	87%	86%	85%	43%

## 2.2 Compared Parameters

Parameter	Planned	Actual	Parameter	Planned	Actual
Instrument	ACIS	ACIS	Obspar format version number	7	7
Detector	ACIS-012367	ACIS-012367	Obspar file type	PREDICTED	ACTUAL
Grating	NONE	NONE	Obspar update status	NONE	UPDATED
Data mode	VFAINT	VFAINT	CCD I0 on	Y	Y
Observation mode	POINTING	POINTING	CCD I1 on	Y	Y
[deg] Pointing RA	150.000070	149.999440817847	CCD I2 on	Y	Y
[deg] Pointing Dec	2.113083	2.140586946752111	CCD I3 on	Y	Y
[deg] Pointing Roll	60.862899	61.07160471428482	CCD S0 on	N	N
[mm] SIM focus pos	-0.782348	-0.7809083437167272	CCD S1 on	N	N
[mm] SIM defocus	0	0.001439871863259334	CCD S2 on	O1	Y
[mm] SIM translation stage pos	-233.592463	-233.5874344608287	CCD S3 on	O2	Y
[mm] SIM translation stage offset	0	-0.005018542100998502	CCD S4 on	N	N
[s] Observation start time (MET)	284327522.184000	284327145.63325	CCD S5 on	N	N
Observation start date	2007-01-04T19:50:57	2007-01-04T19:45:45	Number of optional ACIS chips dropped	0	0
[s] Observation end time (MET)	284376522.184000	284376656.21059	On-chip summing requested	N	N
Observation end date	2007-01-05T09:27:37	2007-01-05T09:30:56	Subarray requested	NONE	NONE
Read mode	TIMED	TIMED	Alternating exposures requested	N	N
			[s] Primary exposure time	0.000000	3.2

## 2.3 Aspect



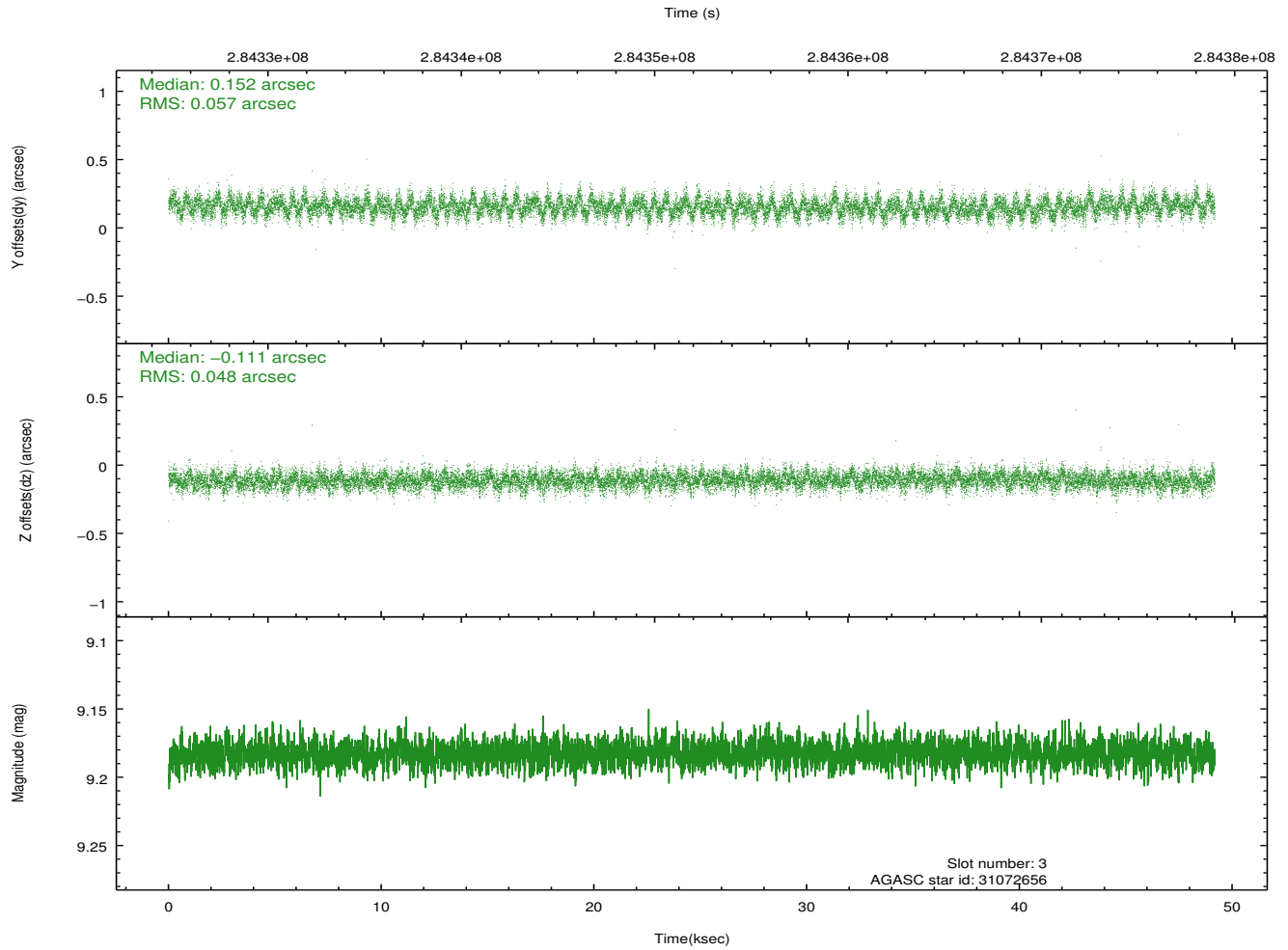
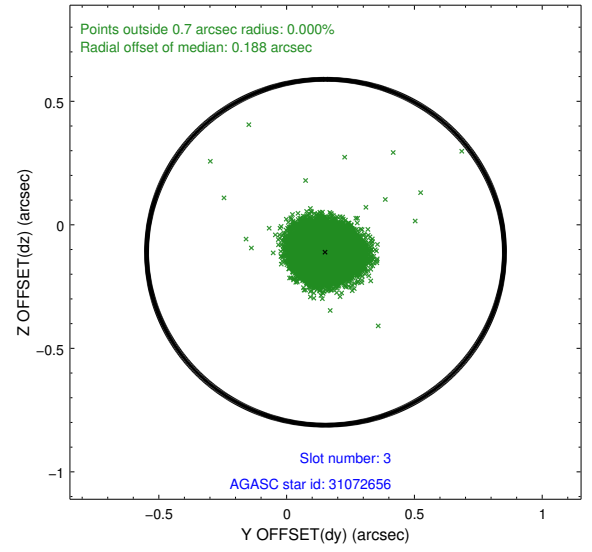
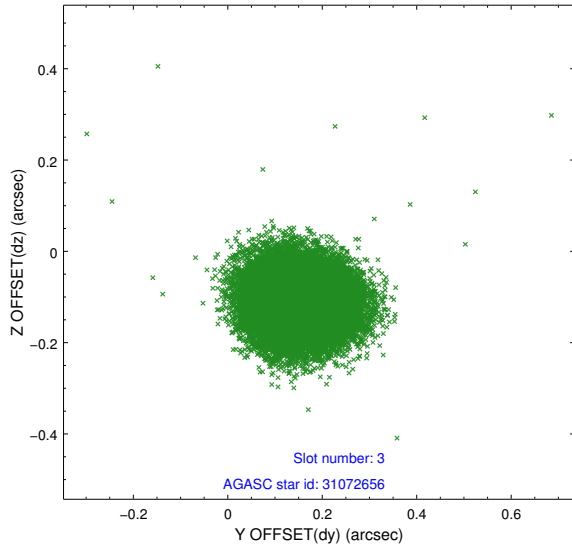


### Slot Statistics

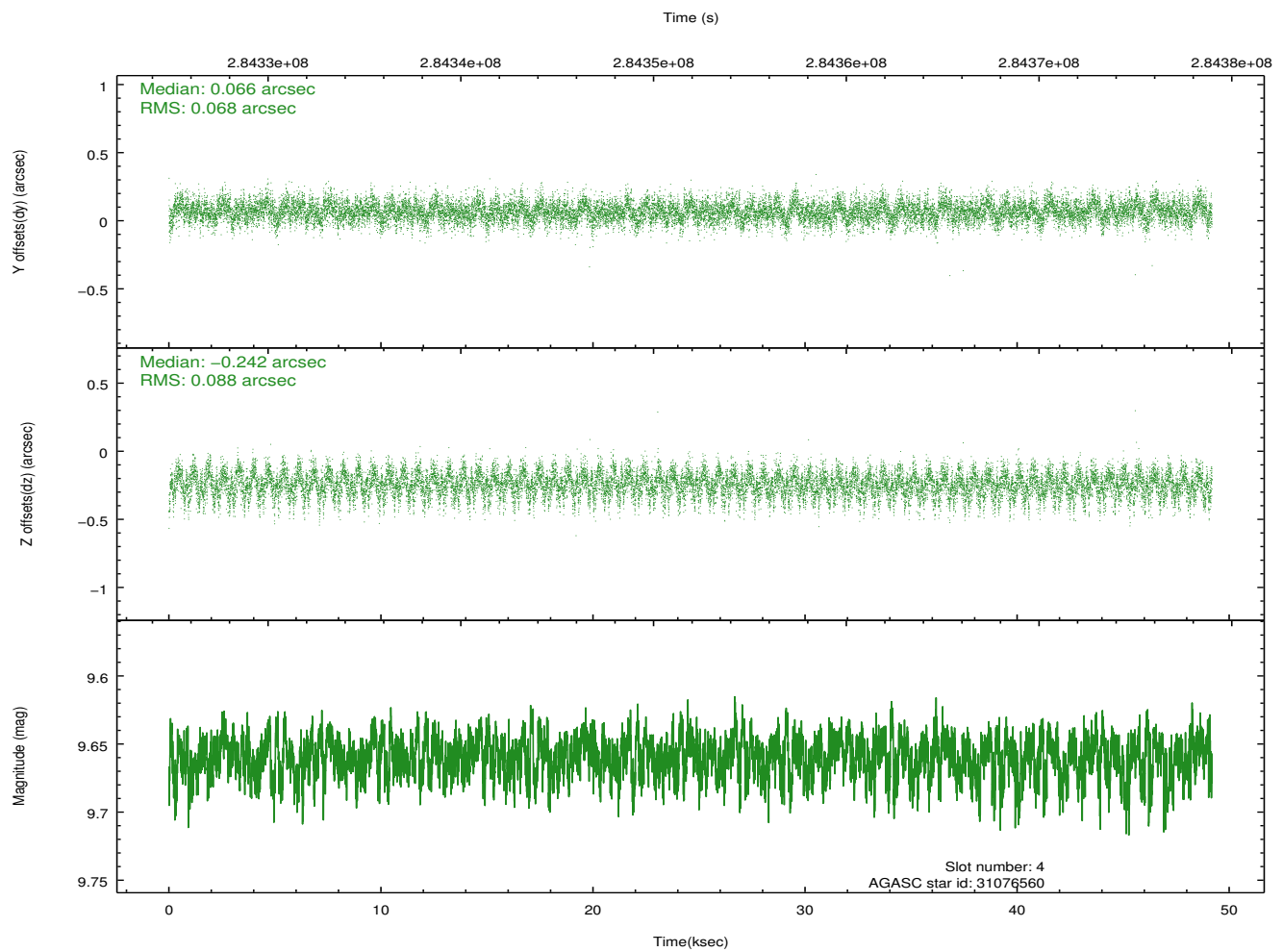
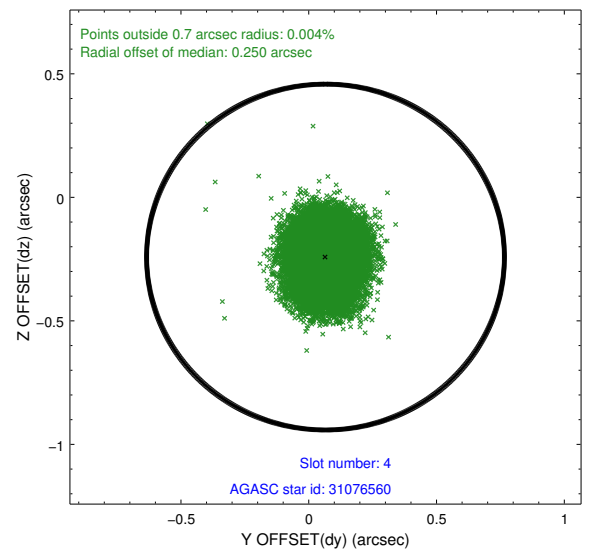
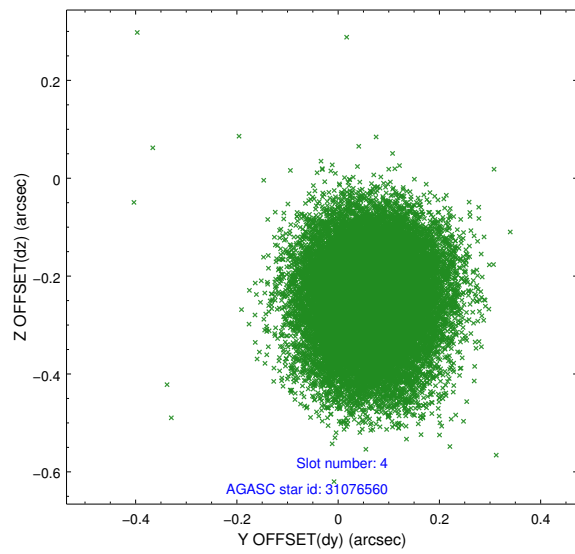
slot	status	id	mag	n_pts	med_dy	med_dz	dr1	dr2	ra	dec	mean_y	mean_z
0	FID	ACIS-I-1	7.24	11995	0.040	-0.013	0.012	0.019	0.000000	0.000000	923.73	-838.29
1	FID	ACIS-I-5	7.23	11995	-0.233	0.037	0.008	0.014	0.000000	0.000000	-1824.66	1059.25
2	FID	ACIS-I-6	7.25	11996	0.102	0.046	0.010	0.017	0.000000	0.000000	389.35	1703.75
3	GUIDE	31072656	9.18	23973	0.152	-0.111	0.080	0.127	149.313368	1.815013	-2139.78	1635.72
4	GUIDE	31076560	9.66	23966	0.066	-0.242	0.118	0.192	149.884782	2.009277	-528.28	180.05
5	GUIDE	31983224	9.46	23956	-0.163	0.288	0.112	0.185	150.543757	1.869948	188.64	-2134.19
6	GUIDE	31983336	8.60	23985	0.010	0.103	0.070	0.111	150.429924	2.291234	1313.71	-1037.85
7	GUIDE	31463496	9.47	23960	-0.068	-0.039	0.095	0.157	149.845020	2.964001	2404.40	1978.94

## 2.4 Star Slots

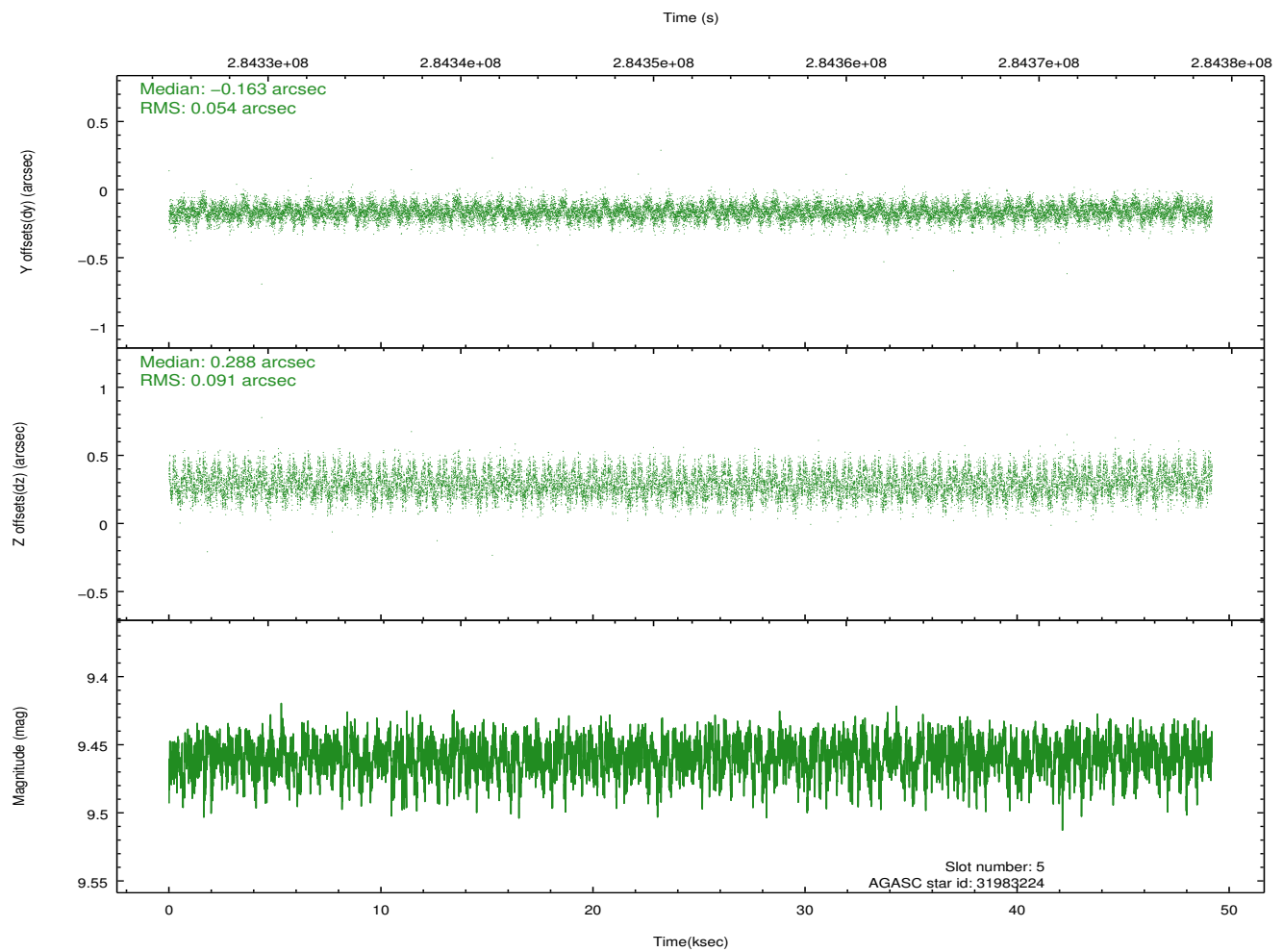
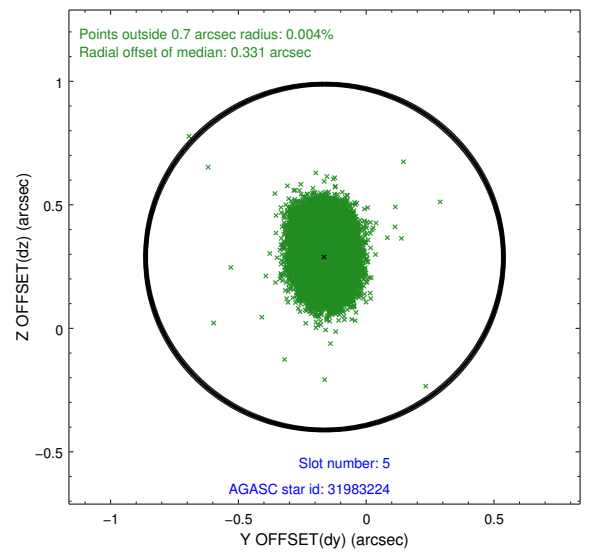
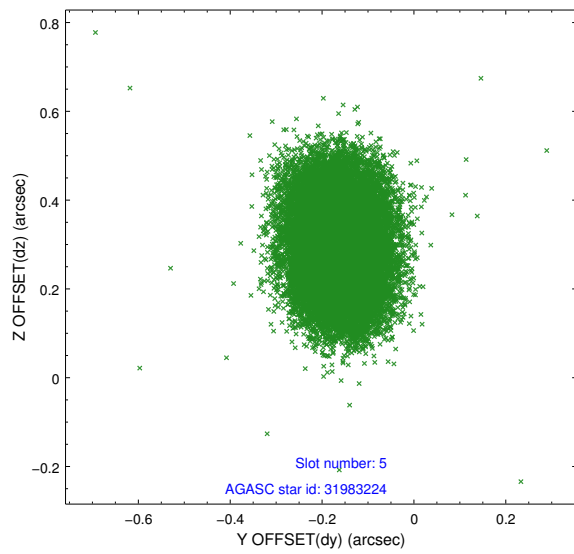
### 2.4.1 Slot 3



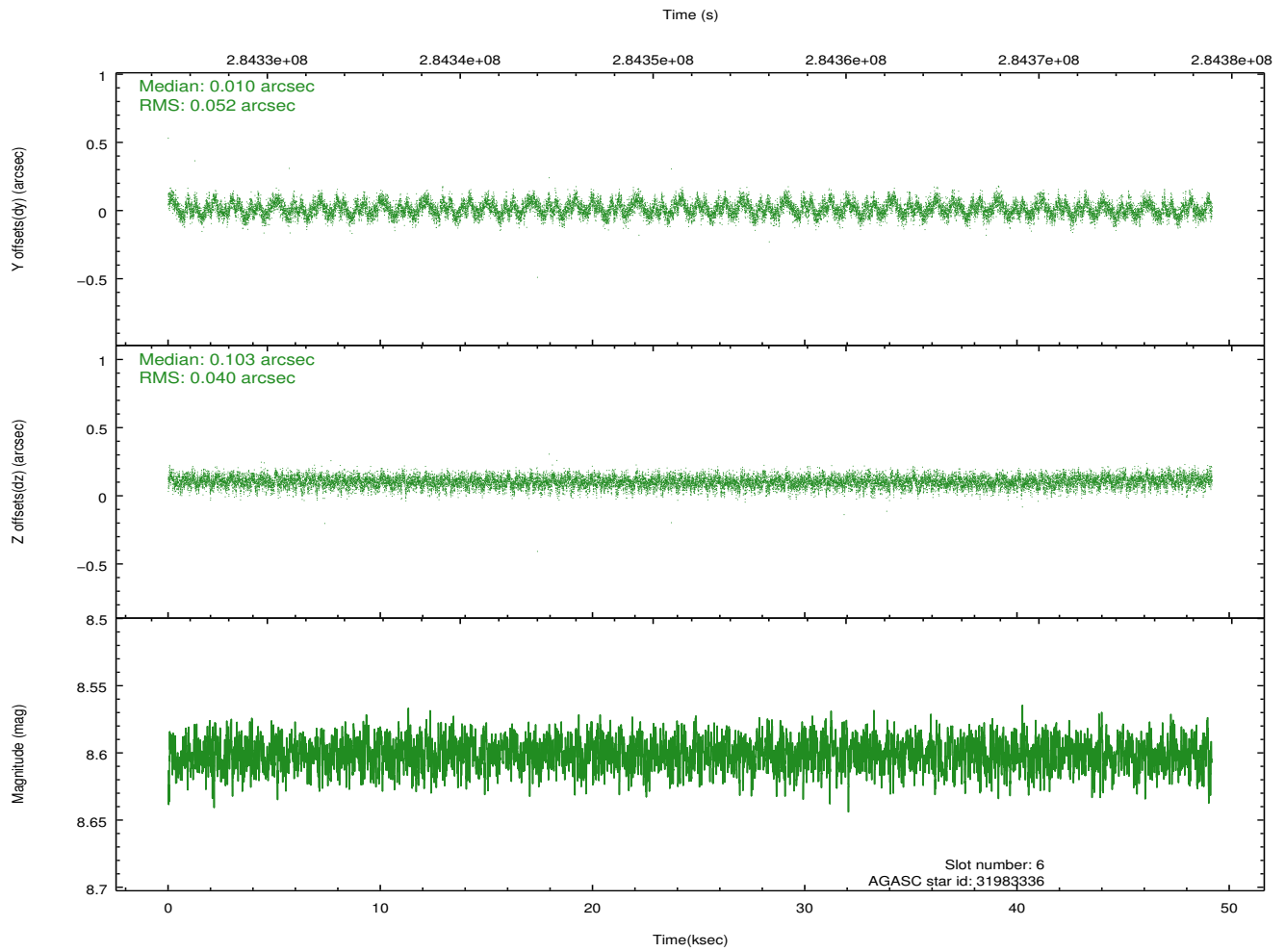
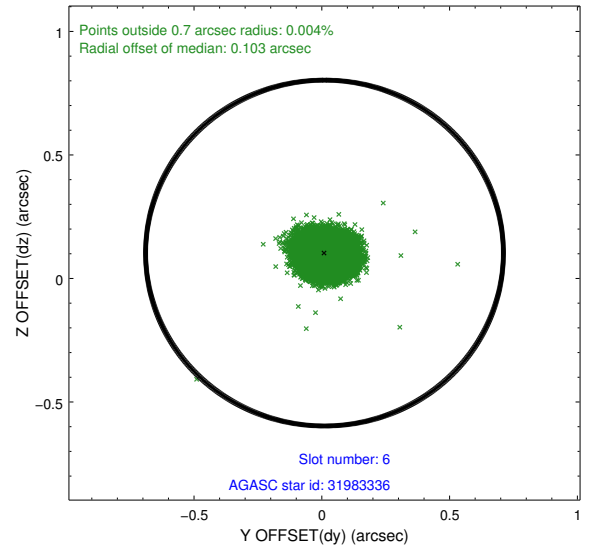
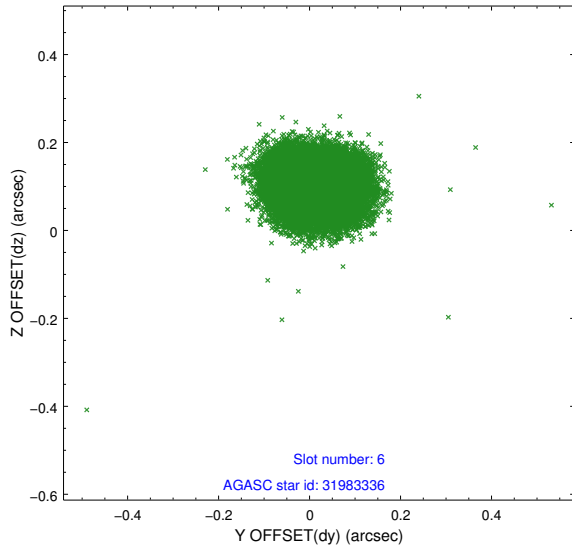
## 2.4.2 Slot 4



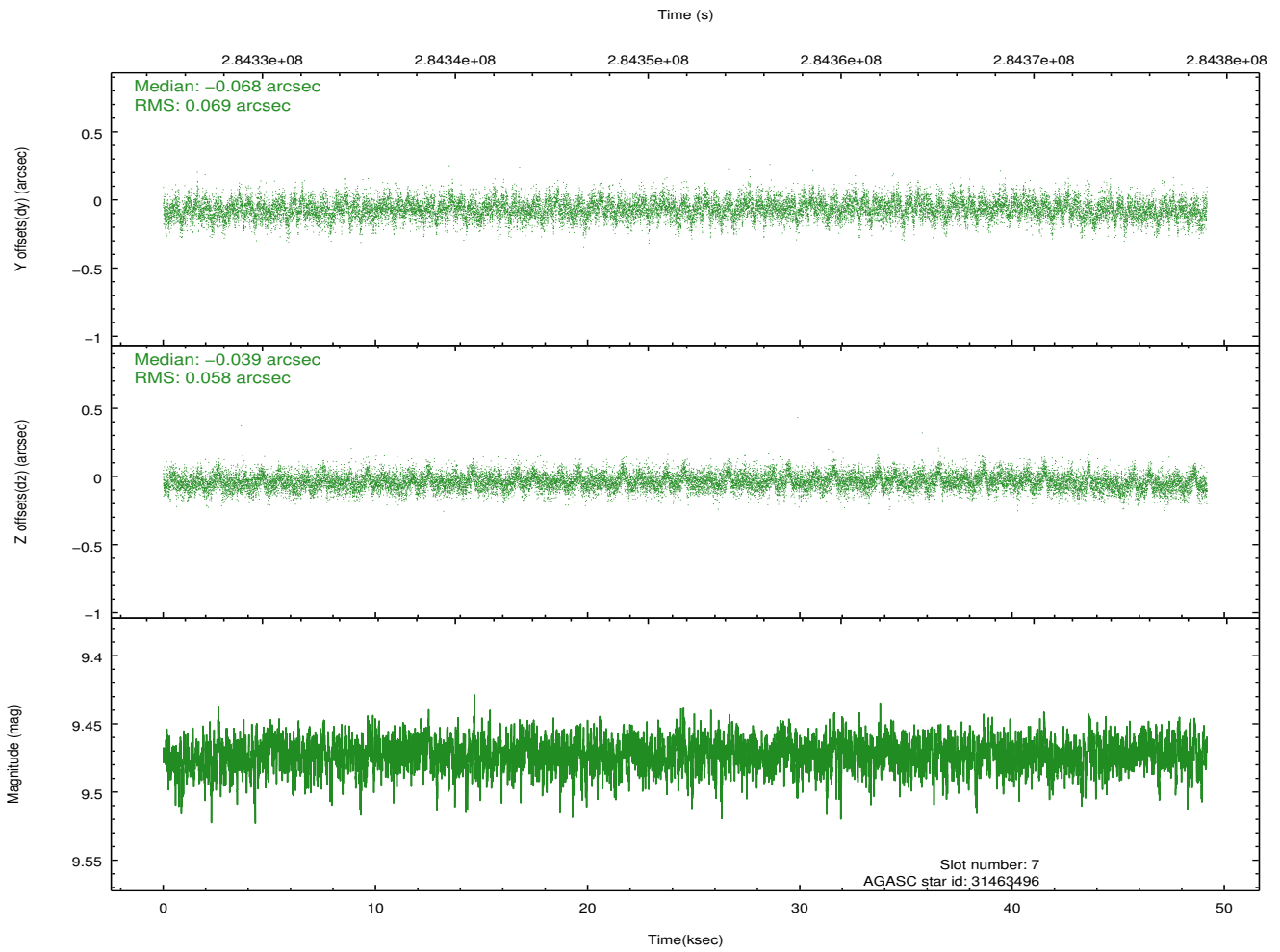
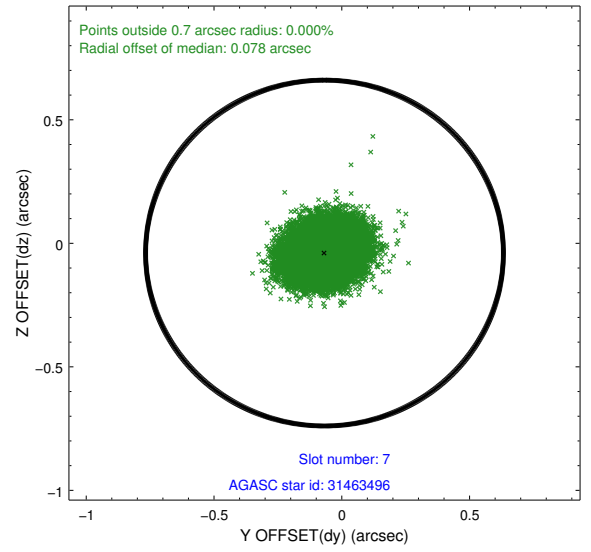
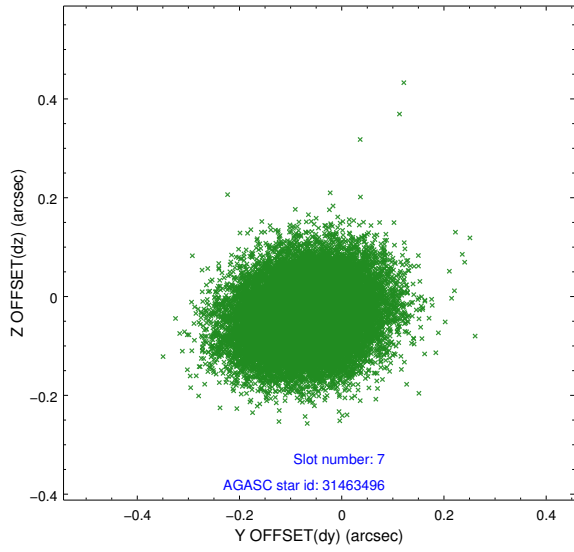
### 2.4.3 Slot 5



### 2.4.4 Slot 6

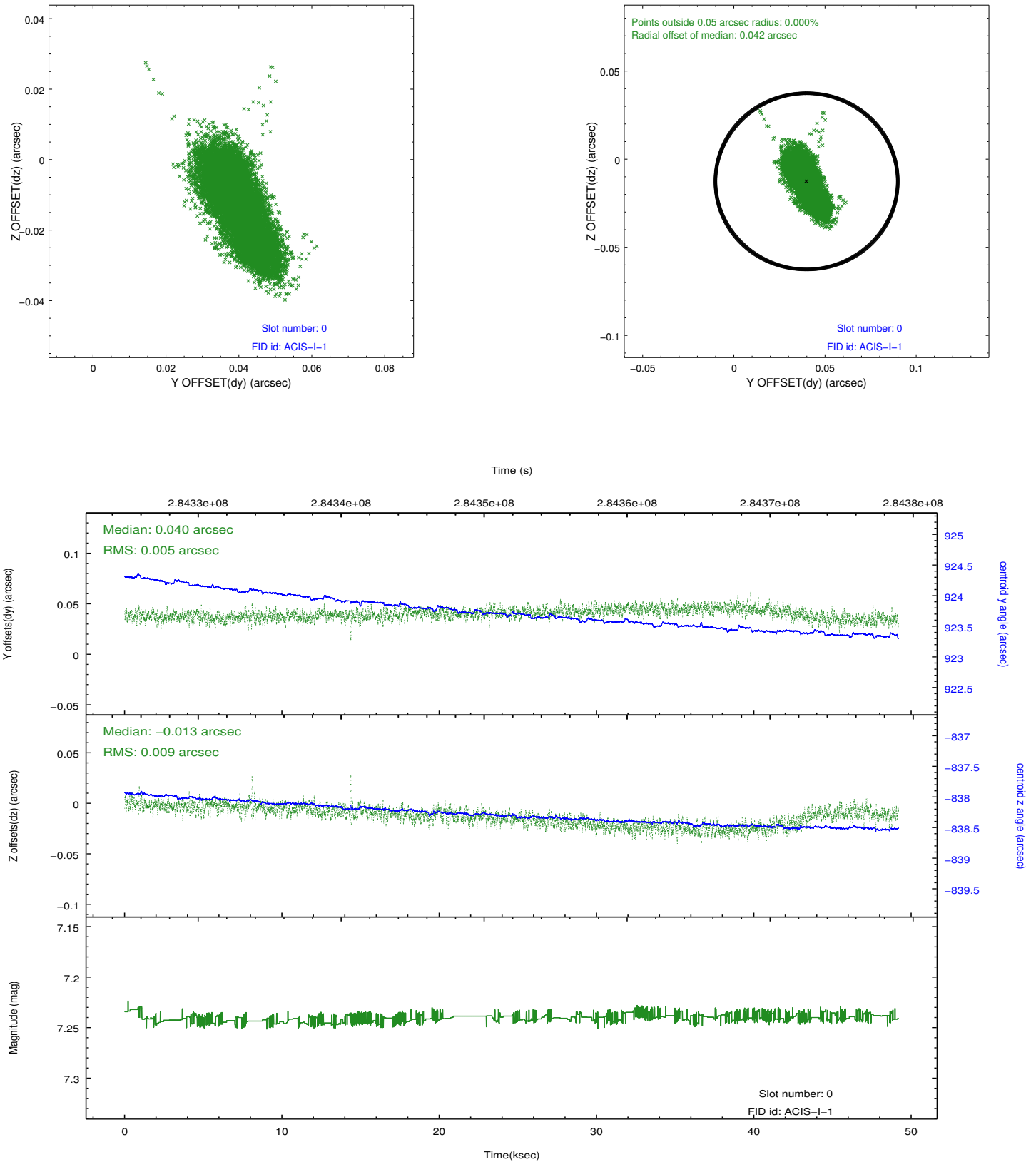


### 2.4.5 Slot 7

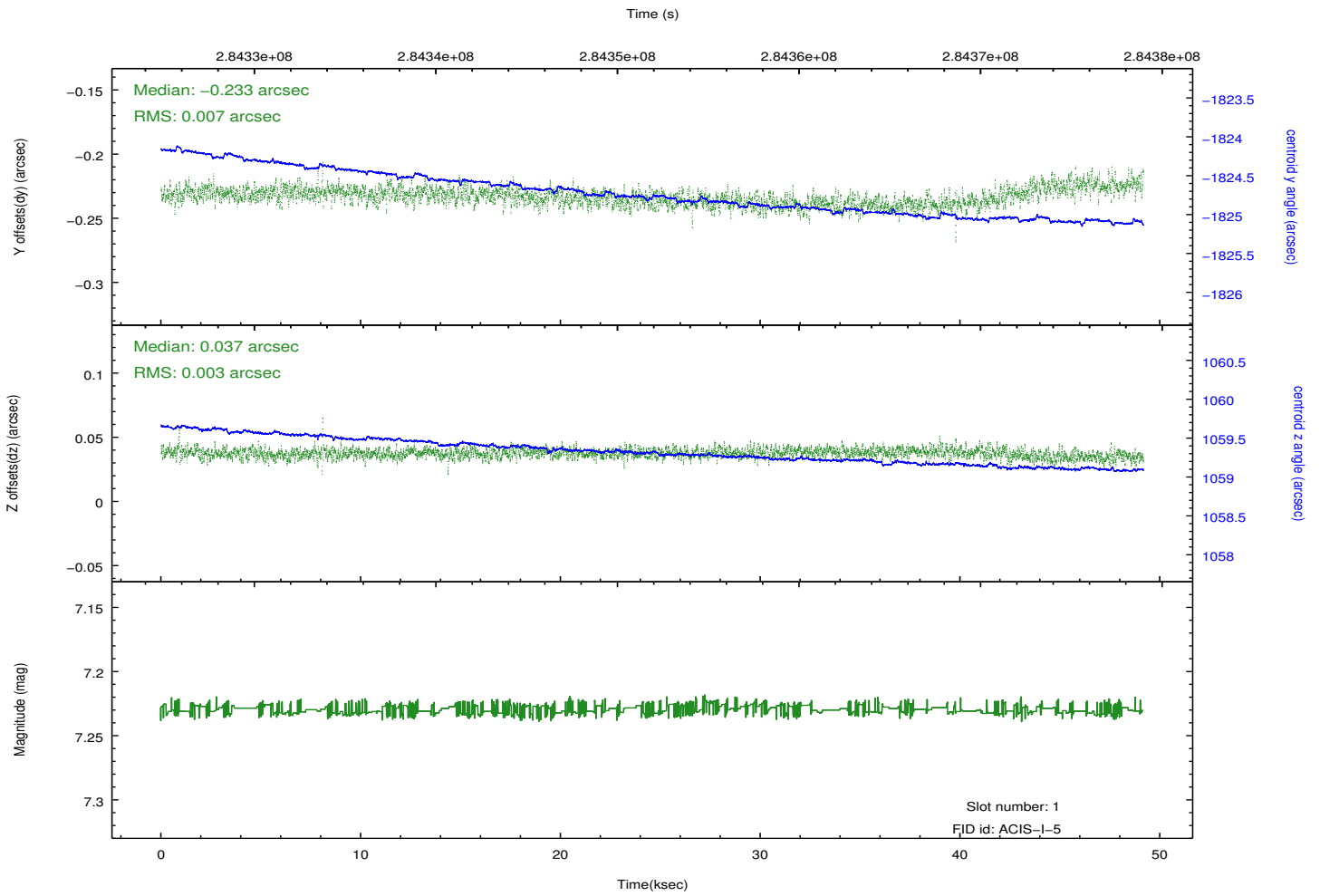
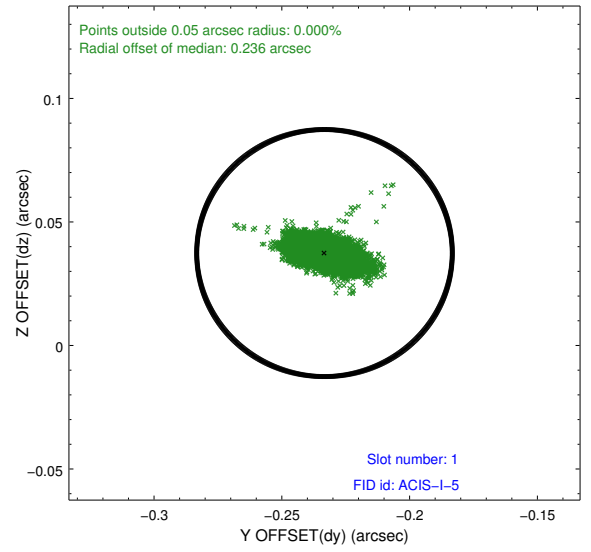
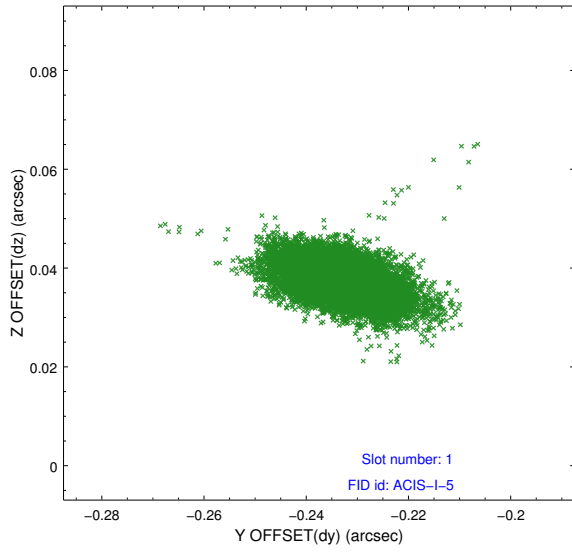


## 2.5 FID Slots

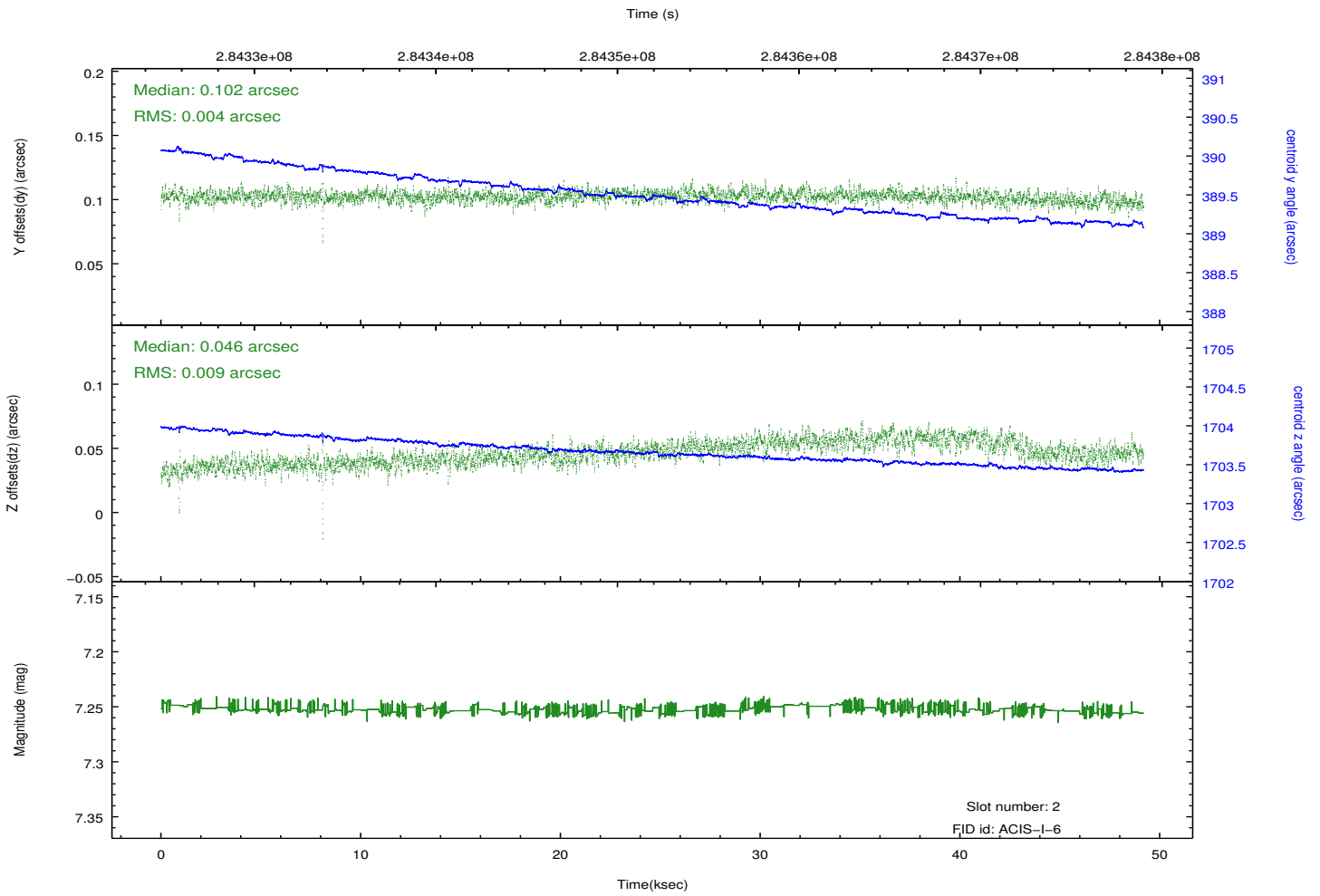
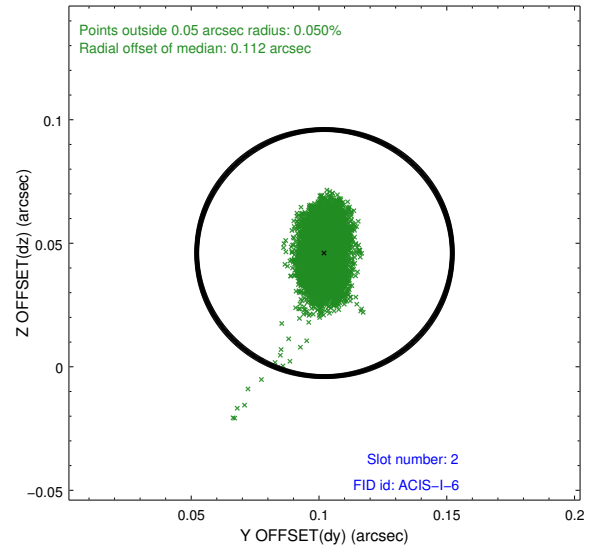
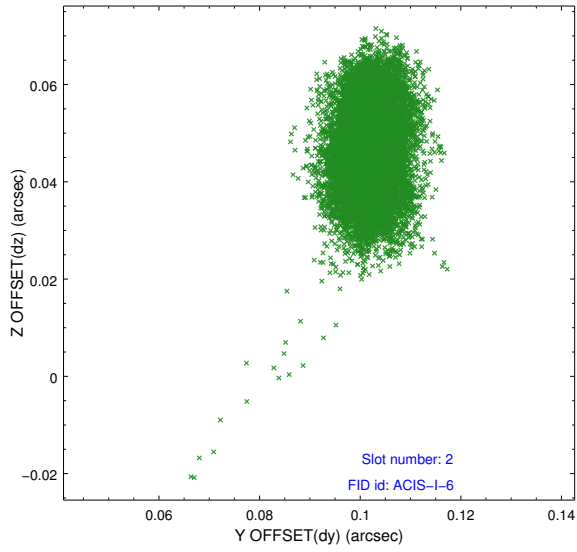
### 2.5.1 Slot 0



## 2.5.2 Slot 1



### 2.5.3 Slot 2



# A Summary

## A.1 Status

V&V Scientist	Beth Sundheim
V&V Date (YYYY-MM-DD)	2012.04.19
V&V Edition	1
V&V Disposition and Status	OK
V&V Charge Time	48.7327178

## A.2 Comments