

# V&V Reference Report

## L2 ASCDS Version : 8.4.4

Observation 8033 - L2 Version 2  
Chandra X-Ray Center

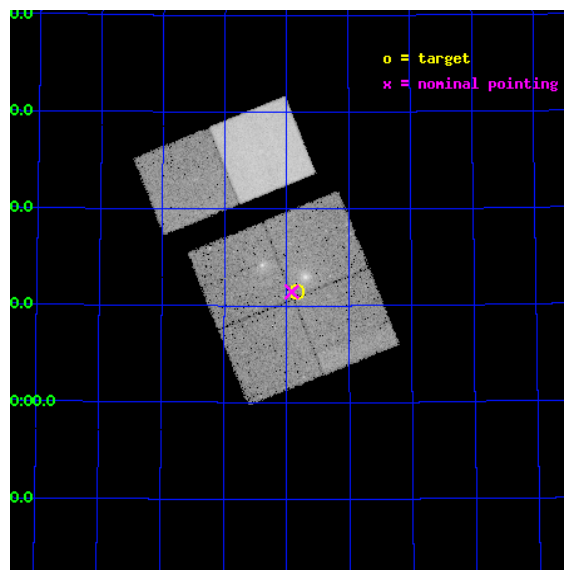
L2 Processing Date : May 4 2012

## Contents

<b>1</b>	<b>Front</b>	<b>2</b>
<b>2</b>	<b>OBI</b>	<b>3</b>
2.1	OBI . . . . .	3
2.1.1	Images . . . . .	3
2.1.2	Bias . . . . .	3
2.1.3	Parameters . . . . .	4
2.1.4	Events . . . . .	4
2.2	Compared Parameters . . . . .	5
2.3	Aspect . . . . .	6
2.4	Star Slots . . . . .	9
2.4.1	Slot 3 . . . . .	9
2.4.2	Slot 4 . . . . .	10
2.4.3	Slot 5 . . . . .	11
2.4.4	Slot 6 . . . . .	12
2.4.5	Slot 7 . . . . .	13
2.5	FID Slots . . . . .	14
2.5.1	Slot 0 . . . . .	14
2.5.2	Slot 1 . . . . .	15
2.5.3	Slot 2 . . . . .	16
<b>A</b>	<b>Summary</b>	<b>17</b>
A.1	Status . . . . .	17
A.2	Comments . . . . .	17

# 1 Front

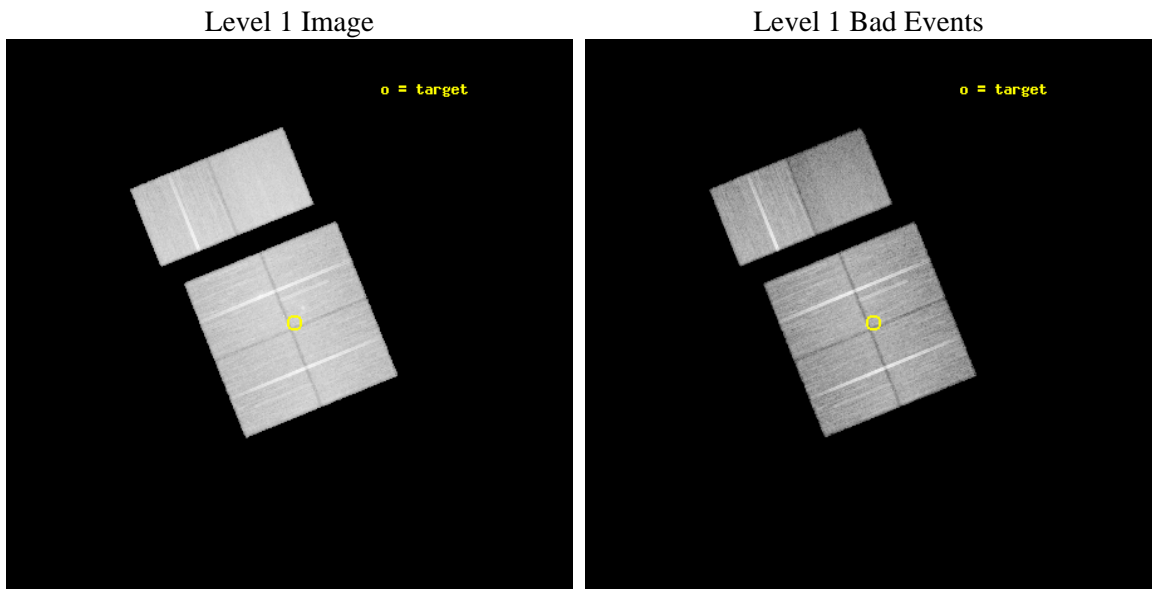
seq_num	900576	Sequence number
obs_id	8033	Observation id
title	AGN in the Cosmic Web: A Proto-Cluster at z=2.3	Proposal title
observer	Prof Kirpal Nandra	Principal investigator
object	HS 1700+643	Source name
dtcycle	0	&#160
cycle	P	events from which exps? Prim/Second/Both
ra_targ	255.210833	Observer's specified target RA [deg]
dec_targ	64.191417	Observer's specified target Dec [deg]
ra_nom	255.22936541367	Nominal RA [deg]
dec_nom	64.190751693039	Nominal Dec [deg]
roll_nom	337.99200759988	Nominal Roll [deg]
revision	2	Processing version of data
ontime	30088.827442765	Sum of GTIs [s]
livetime	29707.824592368	Livetime [s]
ontime0	30082.222461641	Sum of GTIs [s]
ontime1	30082.263412118	Sum of GTIs [s]
ontime2	30088.786402762	Sum of GTIs [s]
ontime3	30088.827442765	Sum of GTIs [s]
ontime6	30082.427701712	Sum of GTIs [s]
ontime7	30088.868482769	Sum of GTIs [s]
l2events	221104	Number of level 2 events



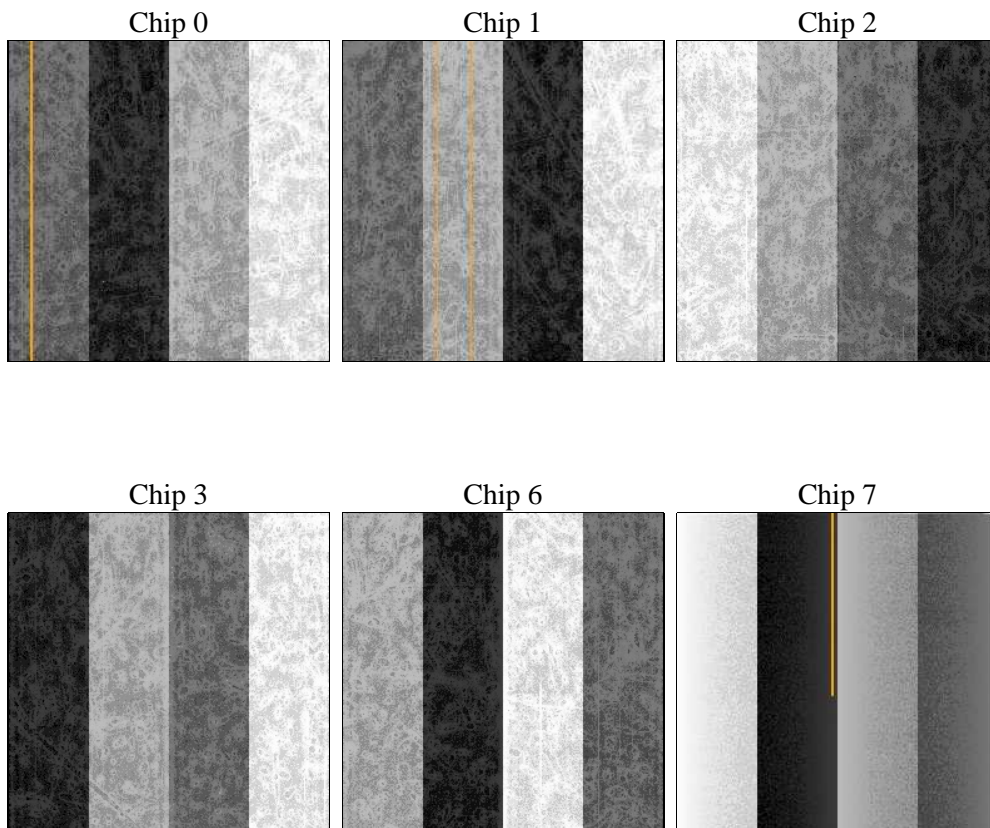
## 2 OBI

### 2.1 OBI

#### 2.1.1 Images



#### 2.1.2 Bias



### 2.1.3 Parameters

obi_num	0	Obi number	sched_exp_time	30000.000000	[s] Scheduled observation exposure time
ascdsver	8.4.4	Processing system revision	ontime	30088.827442765	Sum of GTIs [s]
caldbver	4.4.9	&#160	ontime0	30082.222461641	Sum of GTIs [s]
date	2012-05-04T15:29:49	Date and time of file creation	ontime1	30082.263412118	Sum of GTIs [s]
revision	2	Processing version of data	ontime2	30088.786402762	Sum of GTIs [s]
			ontime3	30088.827442765	Sum of GTIs [s]
			ontime6	30082.427701712	Sum of GTIs [s]
			ontime7	30088.868482769	Sum of GTIs [s]
			l1events	1424591	Number of level 1 events

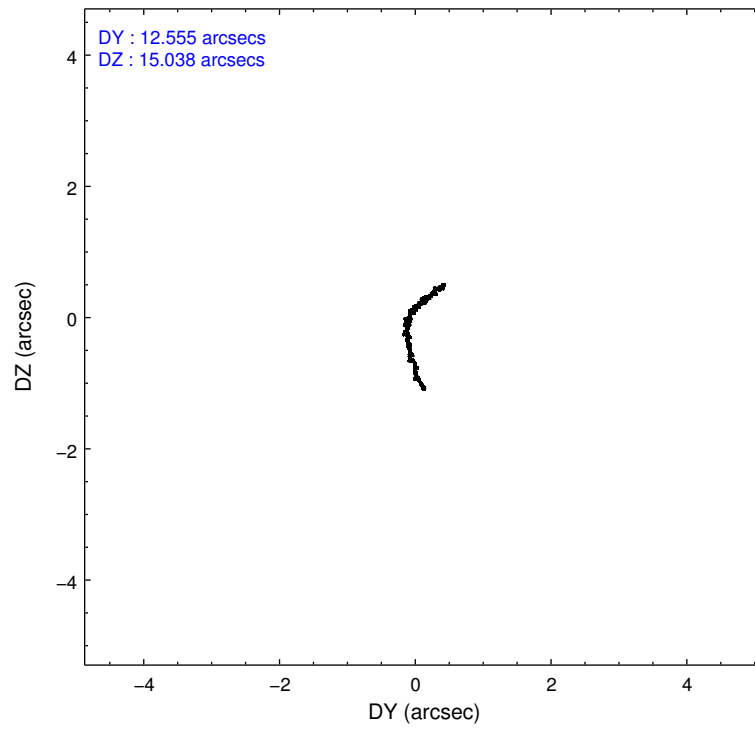
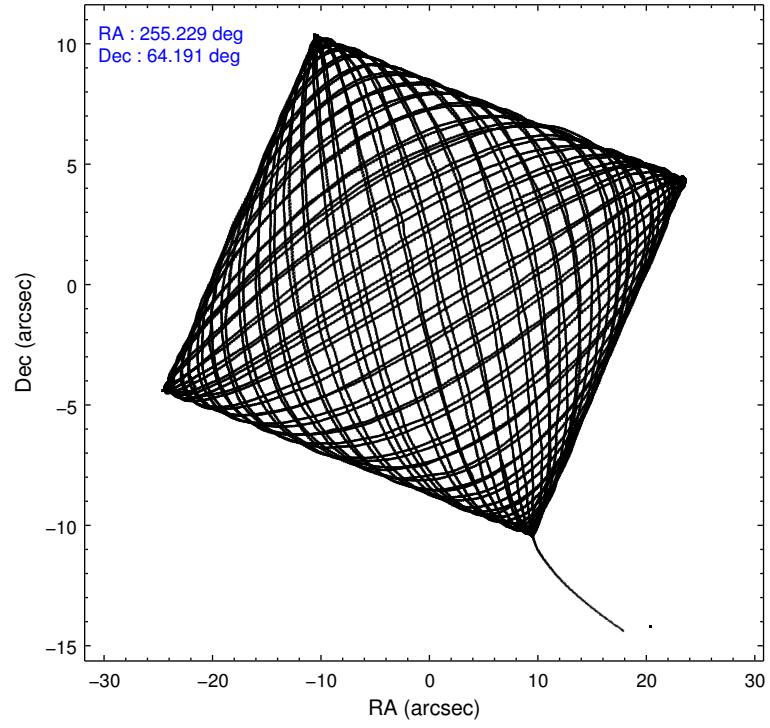
### 2.1.4 Events

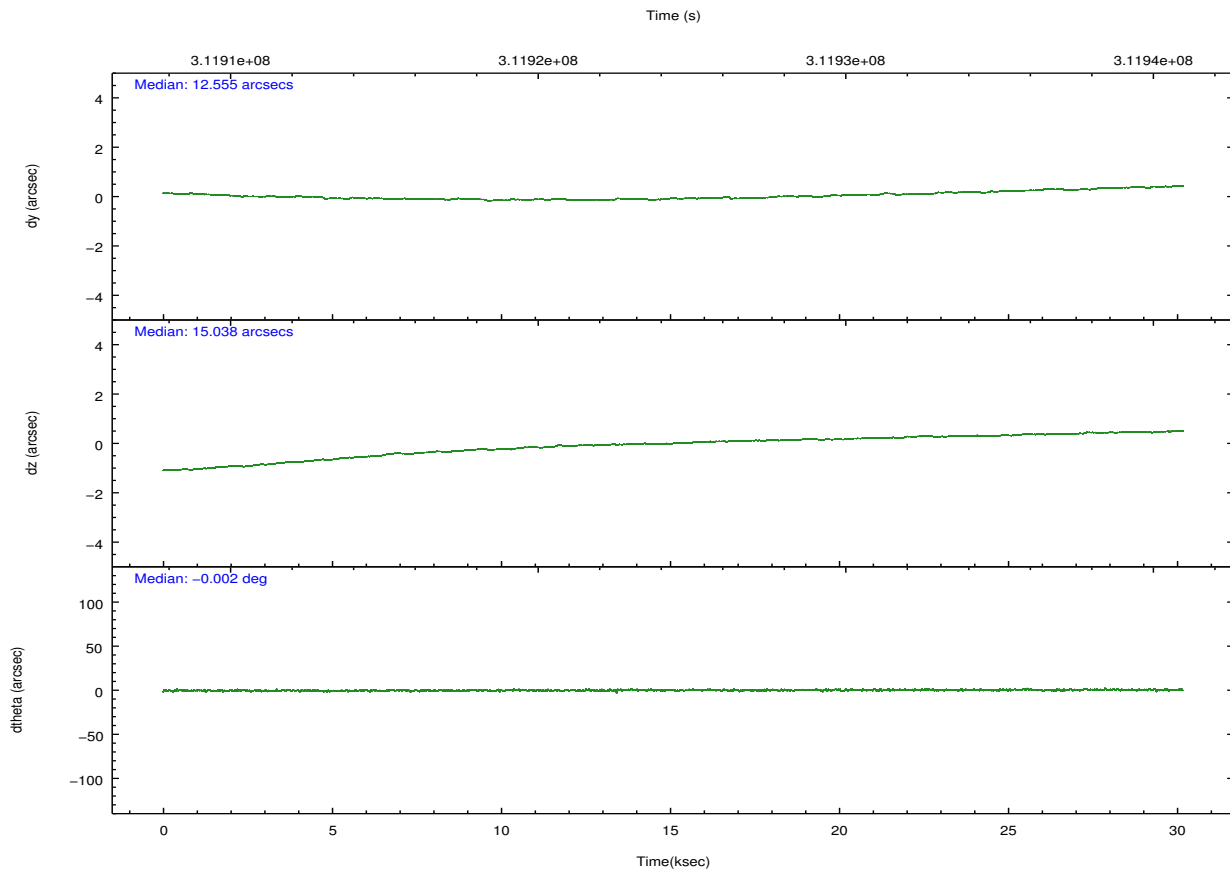
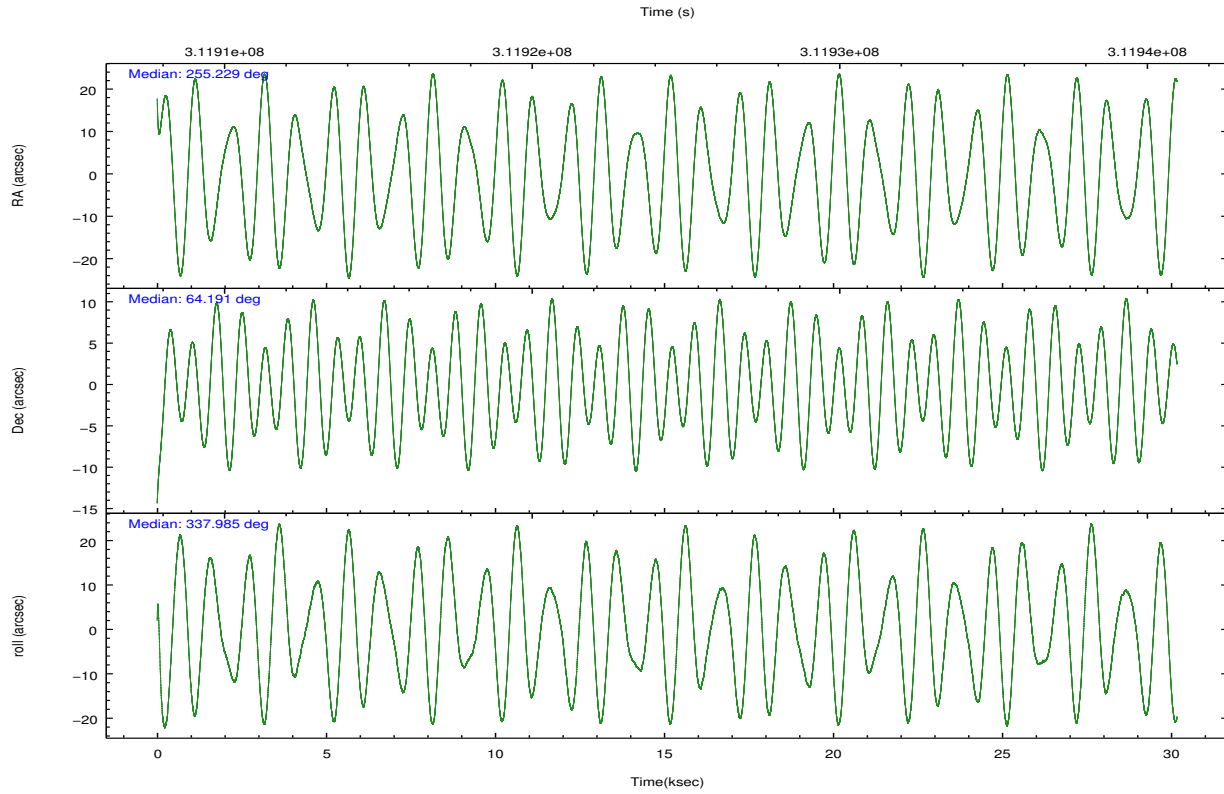
	ccd 0	ccd 1	ccd 2	ccd 3	ccd 6	ccd 7		ccd 0	ccd 1	ccd 2	ccd 3	ccd 6	ccd 7
level 1 events	220105	219139	246290	229582	246350	263125	grade 0 events	7995	9464	10466	10059	8582	11525
rejected events	197032	193106	220833	204604	221670	142214		3%	4%	4%	4%	3%	4%
rejected %	89%	88%	89%	89%	89%	54%	grade 1 events	112	109	151	127	104	319
								0%	0%	0%	0%	0%	0%
							grade 2 events	5570	5832	5621	5251	5455	24518
								2%	2%	2%	2%	2%	9%
							grade 3 events	2536	2742	2520	2591	2644	11253
								1%	1%	1%	1%	1%	4%
							grade 4 events	2484	2770	2649	2595	2586	10904
								1%	1%	1%	1%	1%	4%
							grade 5 events	8129	8979	7570	9217	9576	27641
								3%	4%	3%	4%	3%	10%
							grade 6 events	4494	5227	4206	4485	5417	62726
								2%	2%	1%	1%	2%	23%
							grade 7 events	188785	184016	213107	195257	211986	114239
								85%	83%	86%	85%	86%	43%

## 2.2 Compared Parameters

Parameter	Planned	Actual	Parameter	Planned	Actual
Instrument	ACIS	ACIS	Obspar format version number	7	7
Detector	ACIS-012367	ACIS-012367	Obspar file type	PREDICTED	ACTUAL
Grating	NONE	NONE	Obspar update status	NONE	UPDATED
Data mode	VFAINT	VFAINT	CCD I0 on	Y	Y
Observation mode	POINTING	POINTING	CCD I1 on	Y	Y
[deg] Pointing RA	255.166840	255.2293654136674	CCD I2 on	Y	Y
[deg] Pointing Dec	64.186820	64.19075169303926	CCD I3 on	Y	Y
[deg] Pointing Roll	337.839603	337.9920075998803	CCD S0 on	N	N
[mm] SIM focus pos	-0.782348	-0.7809083437167272	CCD S1 on	N	N
[mm] SIM defocus	0	0.001439871863259334	CCD S2 on	Y	Y
[mm] SIM translation stage pos	-233.592463	-233.5874344608287	CCD S3 on	O1	Y
[mm] SIM translation stage offset	0	-0.005018542100998502	CCD S4 on	N	N
[s] Observation start time (MET)	311909471.184000	311908442.99015	CCD S5 on	N	N
Observation start date	2007-11-20T01:30:06	2007-11-20T01:14:02	Number of optional ACIS chips dropped	0	0
[s] Observation end time (MET)	311939471.184000	311940171.35418	On-chip summing requested	N	N
Observation end date	2007-11-20T09:50:06	2007-11-20T10:02:51	Subarray requested	NONE	NONE
Read mode	TIMED	TIMED	Alternating exposures requested	N	N
			[s] Primary exposure time	0.000000	3.2

## 2.3 Aspect



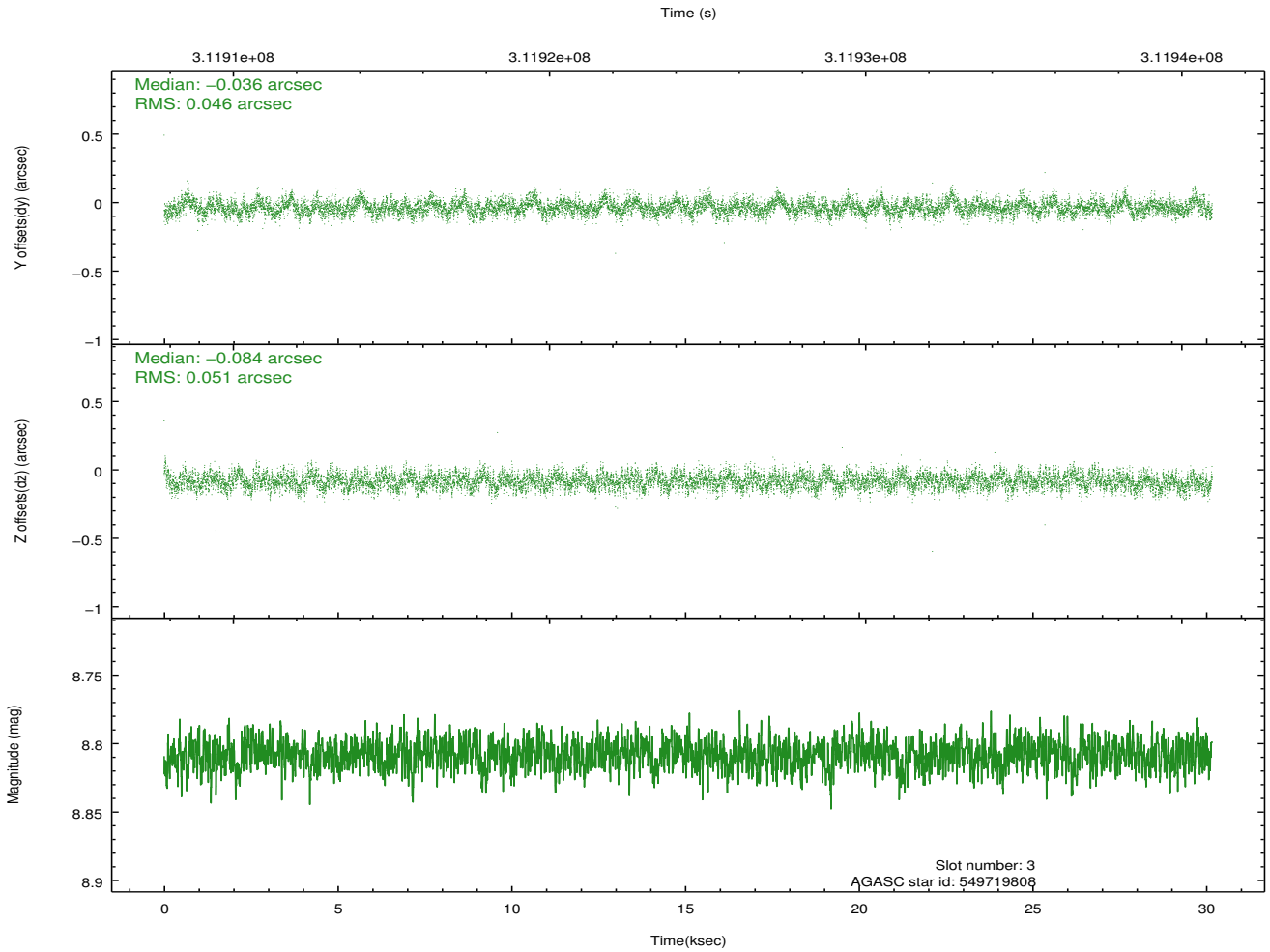
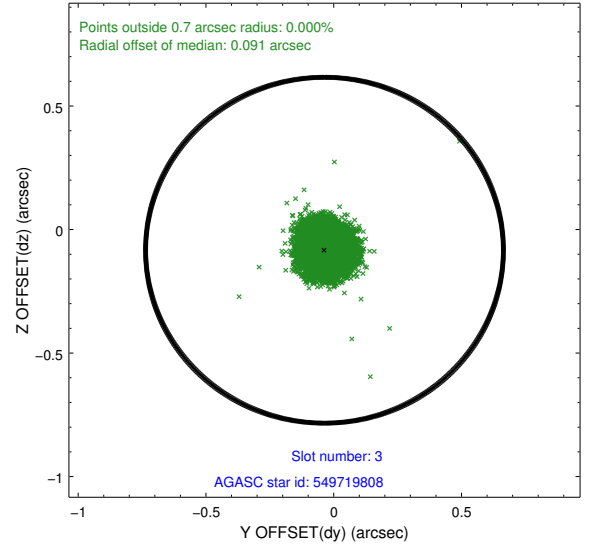
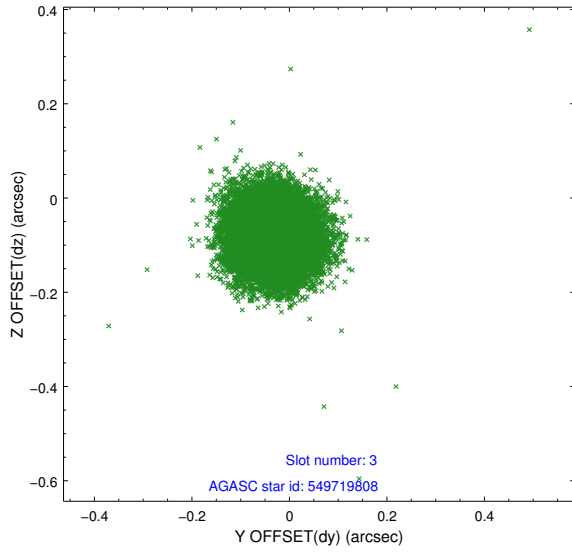


### Slot Statistics

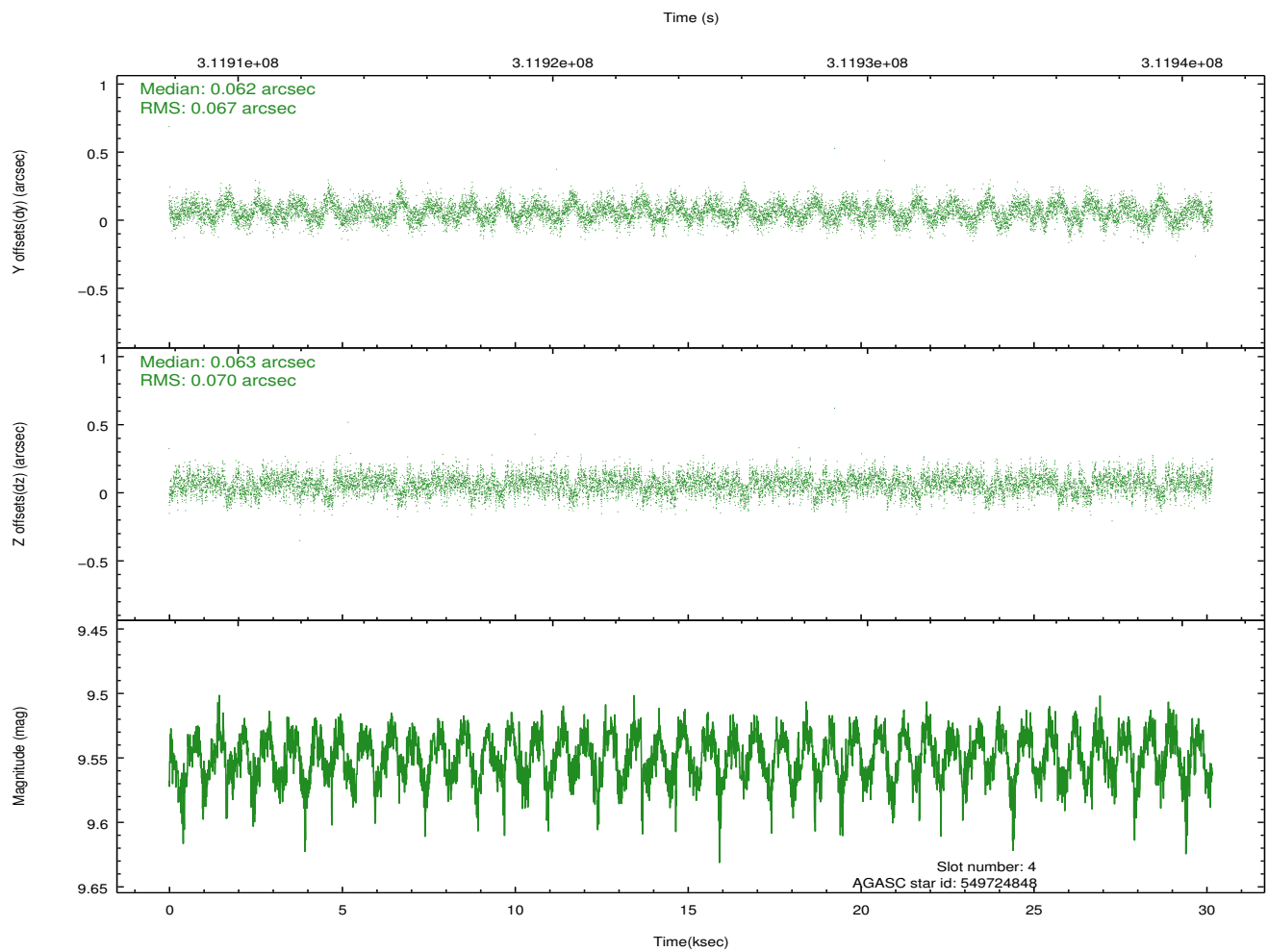
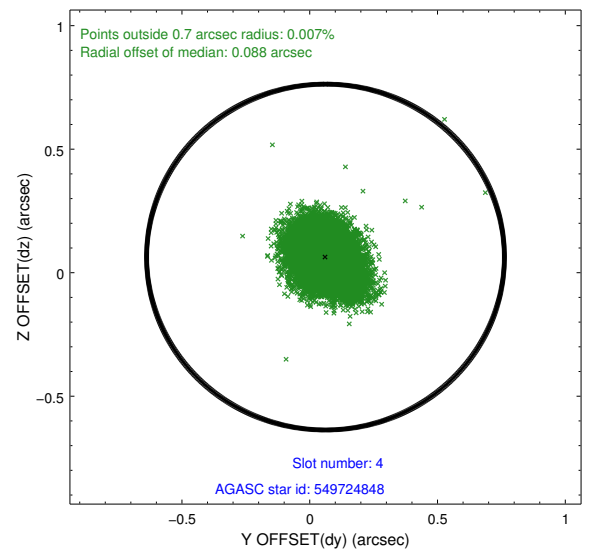
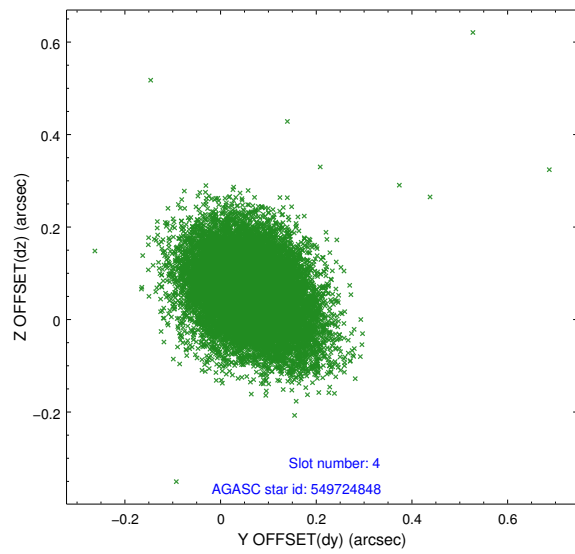
slot	status	id	mag	n_pts	med_dy	med_dz	dr1	dr2	ra	dec	mean_y	mean_z
0	FID	ACIS-I-1	7.22	7359	-0.020	-0.003	0.030	0.044	0.000000	0.000000	926.91	-838.54
1	FID	ACIS-I-4	7.16	7358	0.176	0.035	0.020	0.032	0.000000	0.000000	2147.20	1061.25
2	FID	ACIS-I-5	7.21	7359	-0.255	0.038	0.014	0.021	0.000000	0.000000	-1821.23	1059.21
3	GUIDE	549719808	8.81	14709	-0.036	-0.084	0.074	0.116	255.292775	64.694097	-509.28	1764.70
4	GUIDE	549724848	9.55	14700	0.062	0.063	0.102	0.169	255.389284	63.950133	647.39	-655.39
5	GUIDE	549726784	8.97	14708	0.007	0.011	0.081	0.130	255.680869	64.026795	967.12	-224.47
6	GUIDE	549726944	8.19	14716	-0.041	-0.197	0.082	0.132	254.598381	64.304516	-983.33	61.40
7	GUIDE	549728568	9.33	14700	0.010	0.216	0.099	0.157	253.813006	64.122814	-1891.02	-994.52

## 2.4 Star Slots

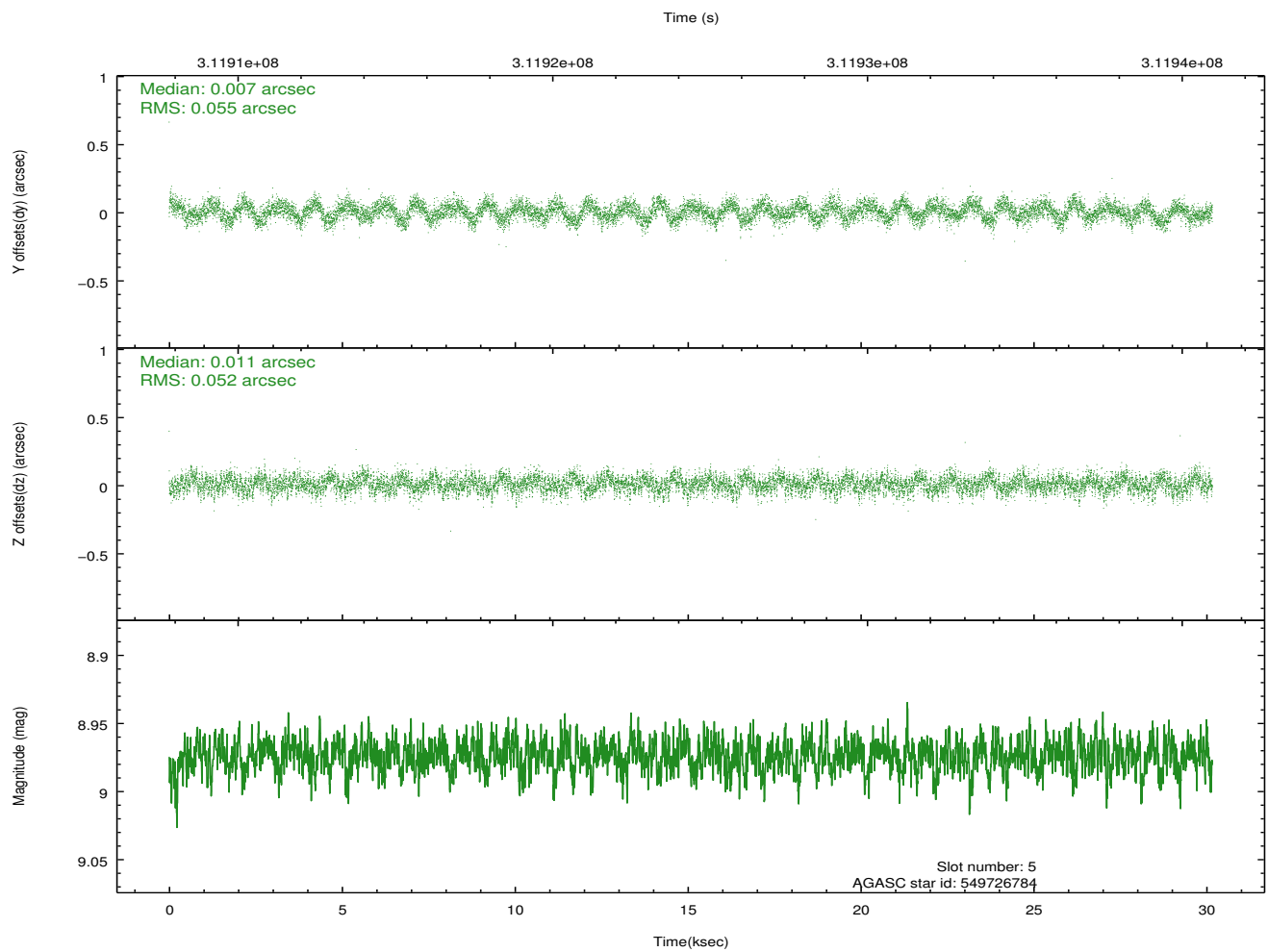
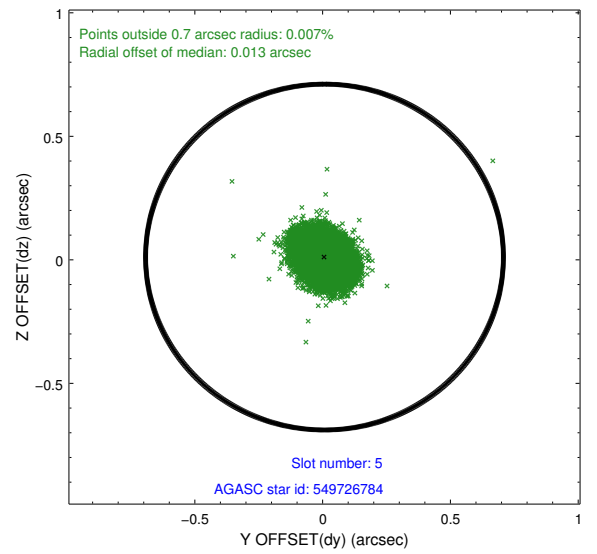
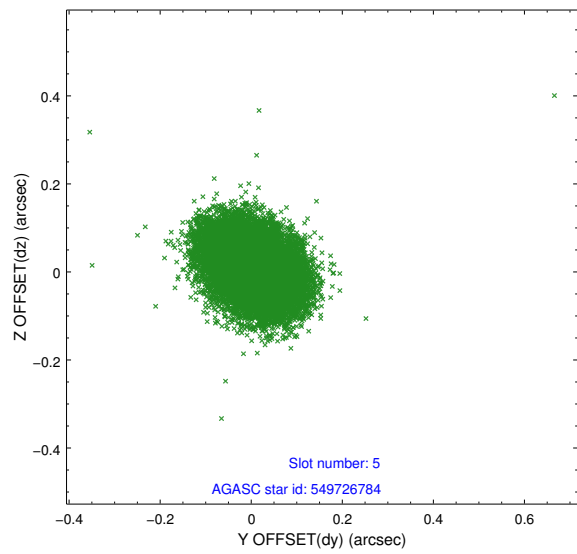
### 2.4.1 Slot 3



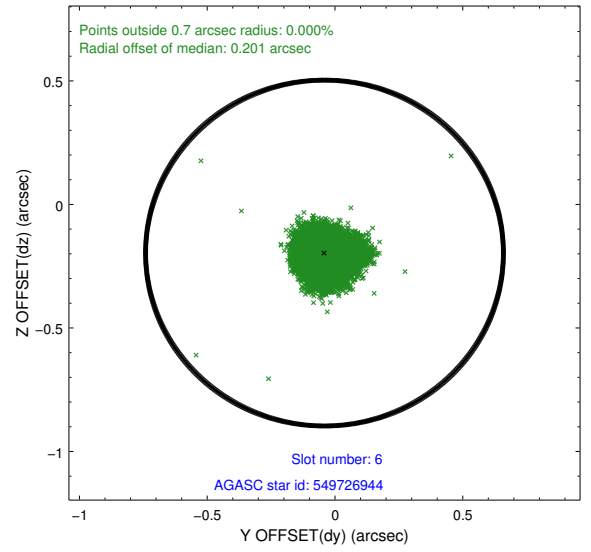
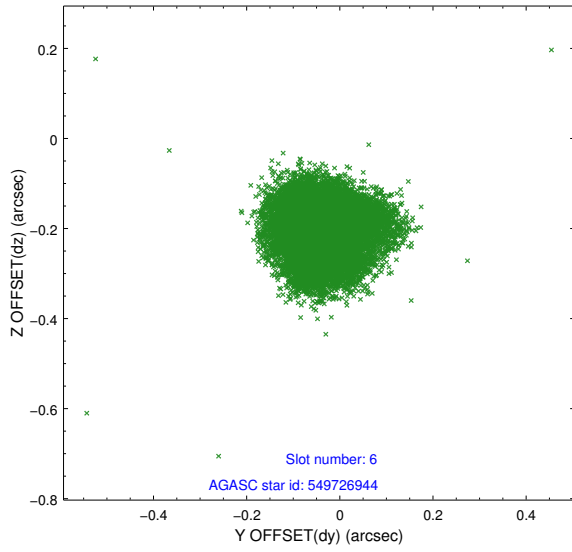
## 2.4.2 Slot 4



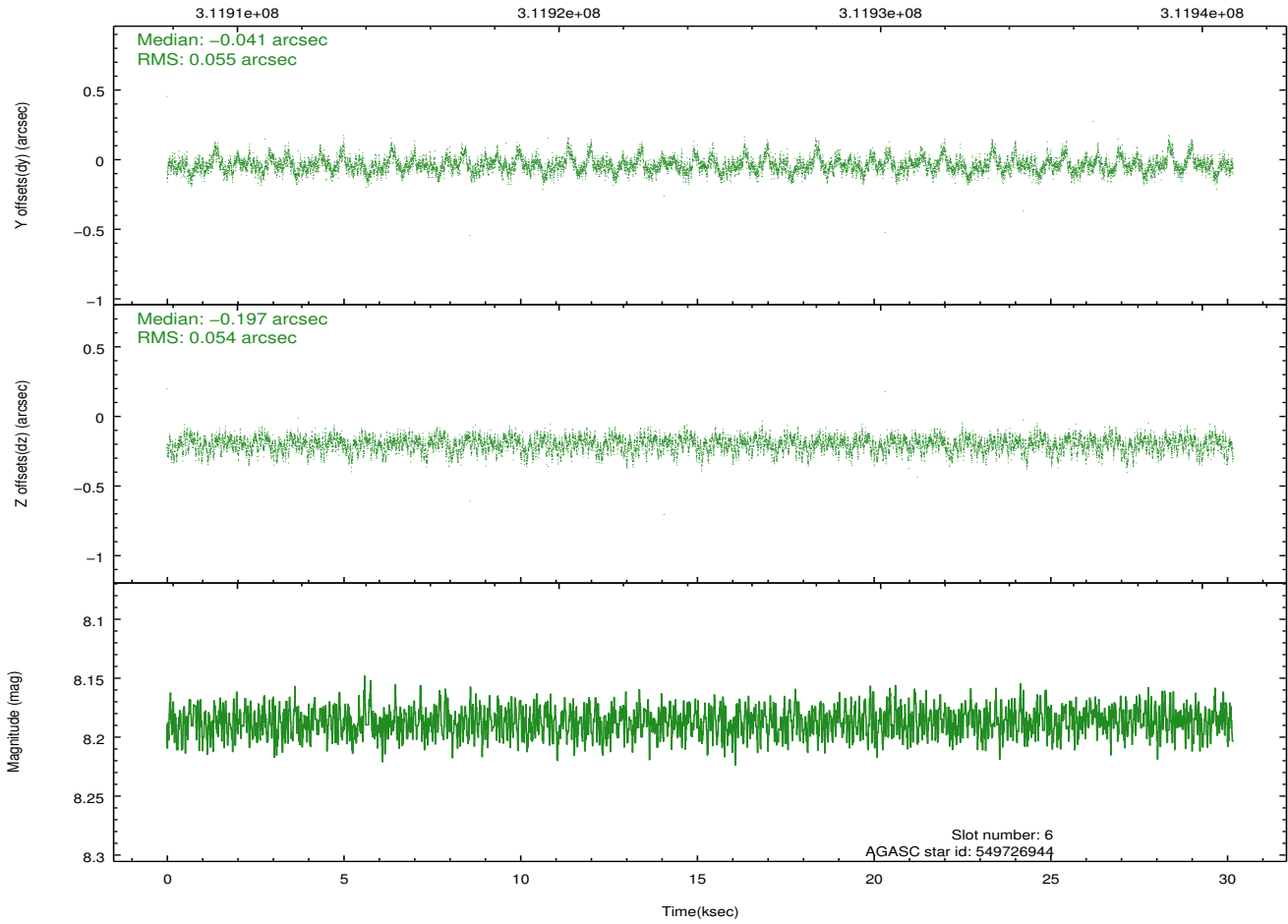
### 2.4.3 Slot 5



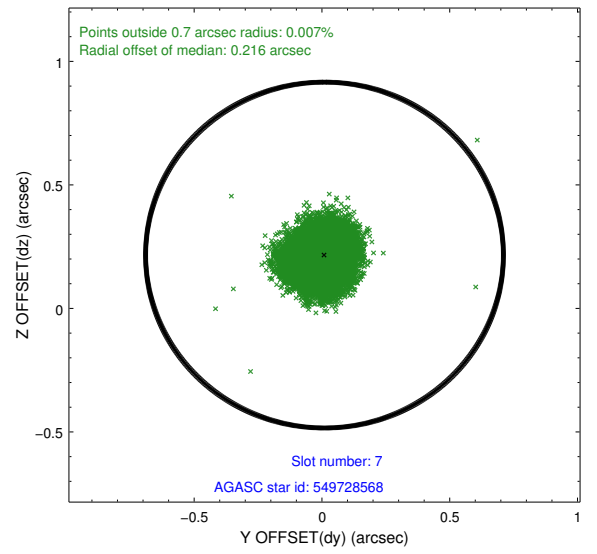
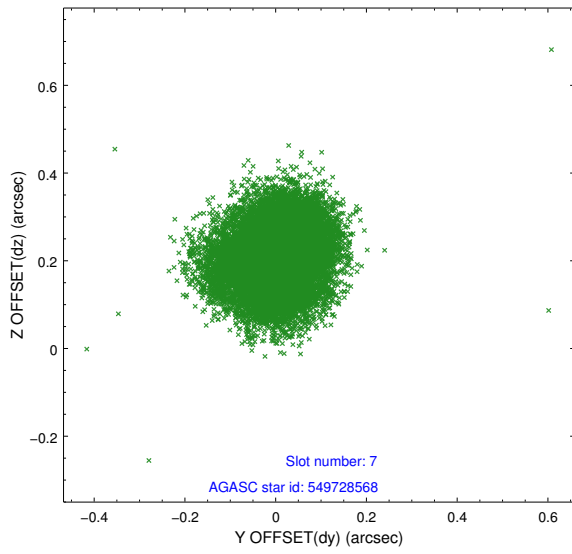
## 2.4.4 Slot 6



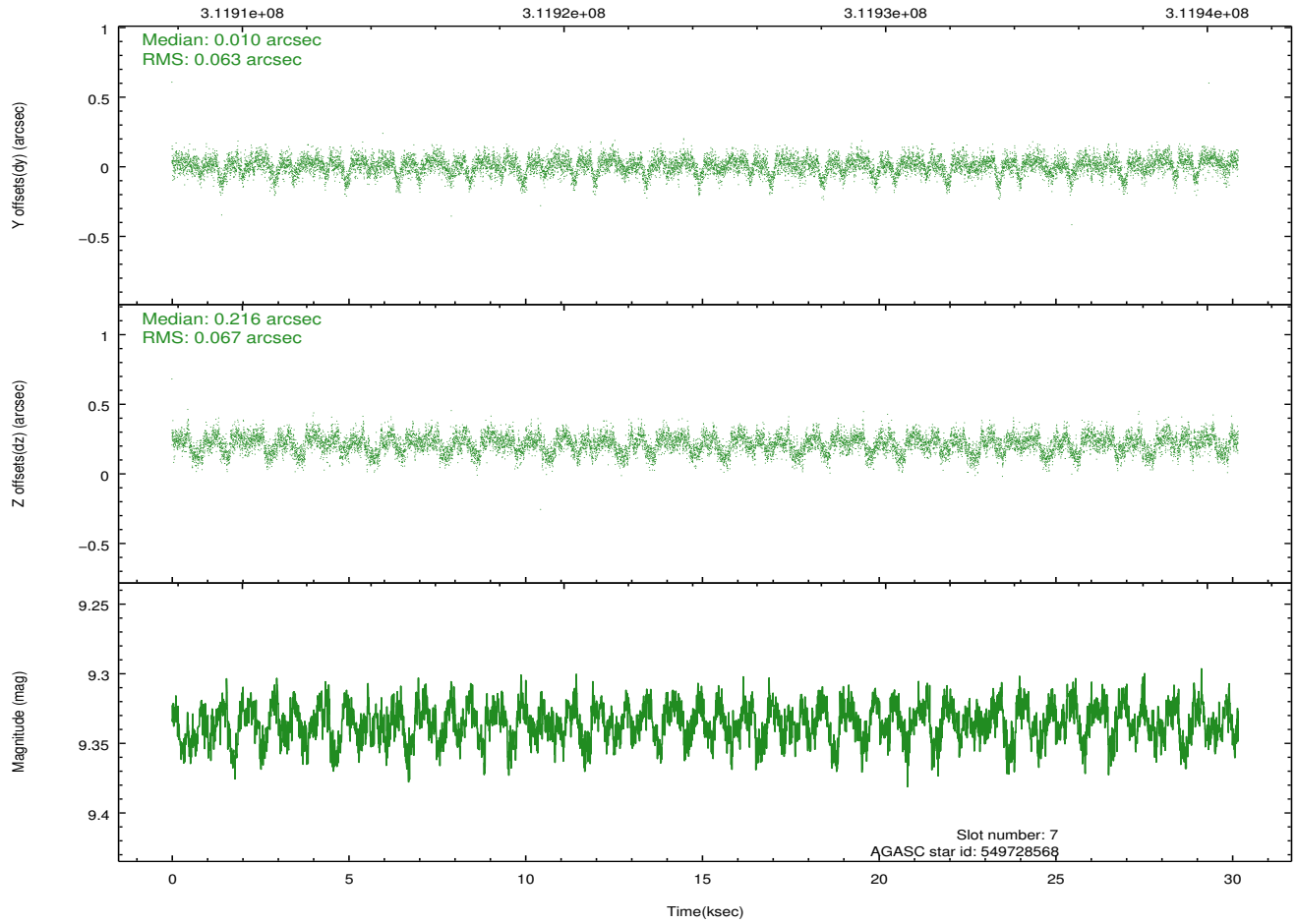
Time (s)



### 2.4.5 Slot 7

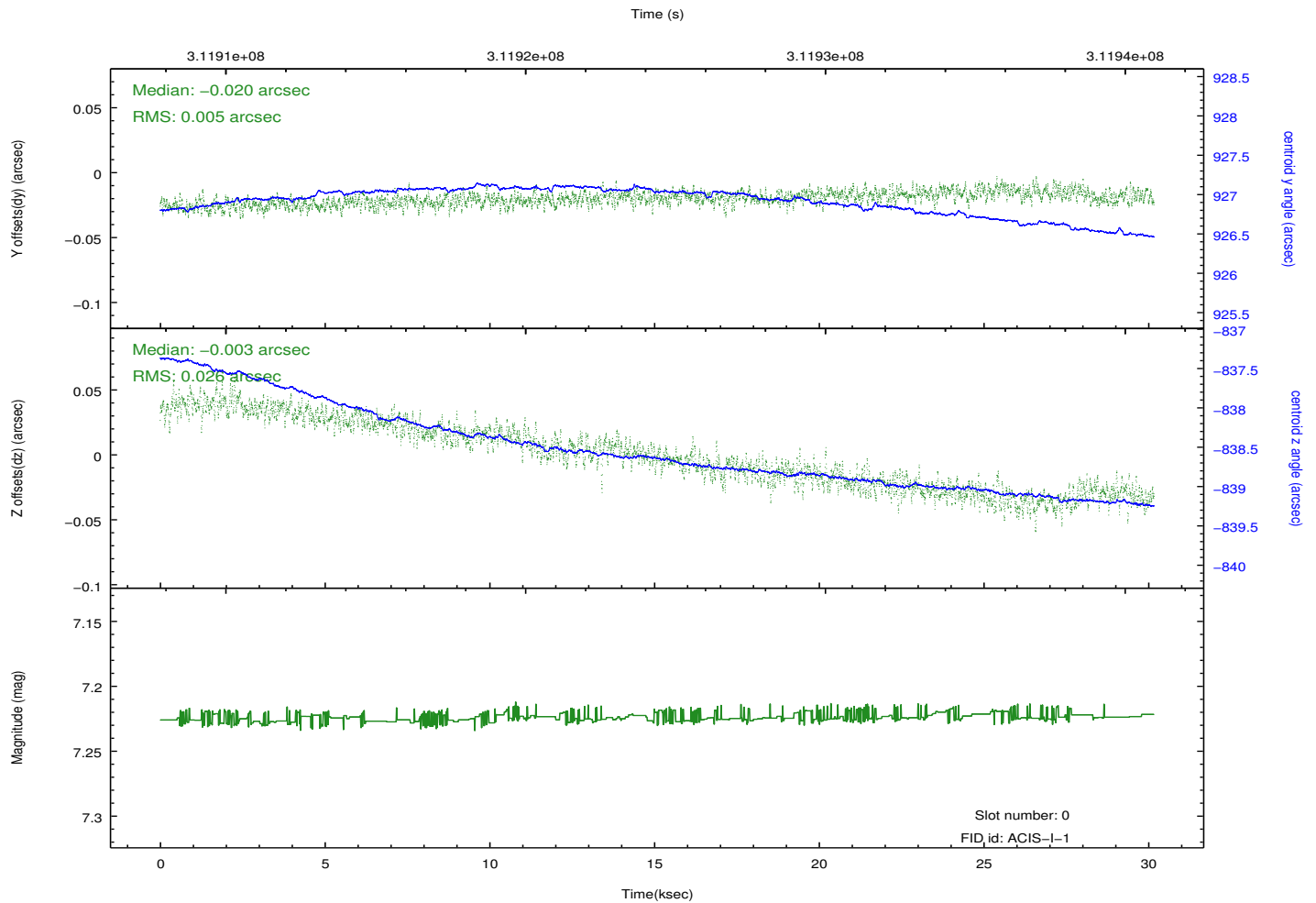
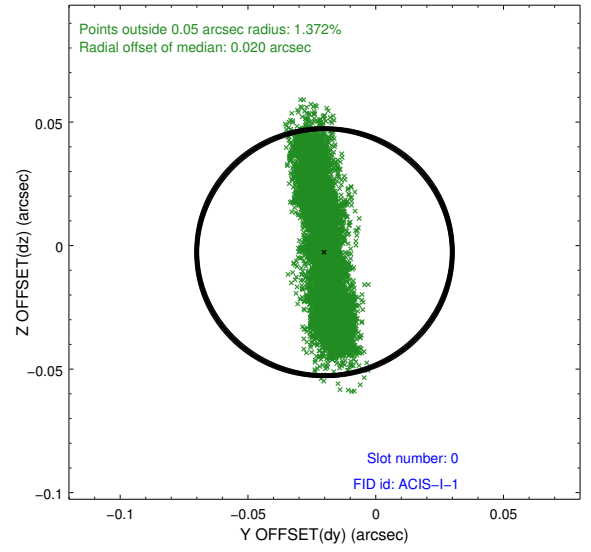
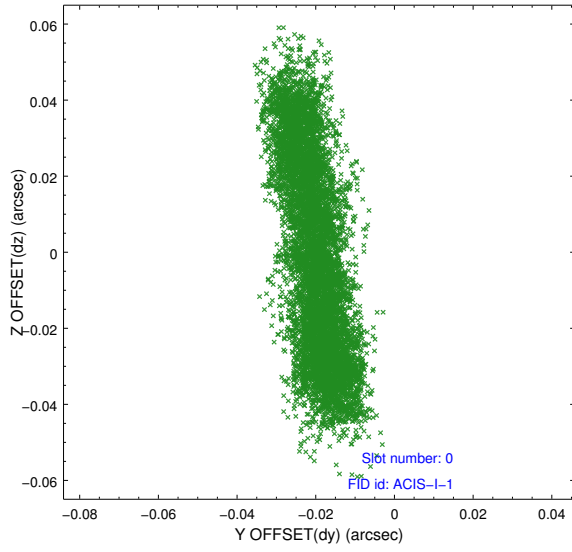


Time (s)

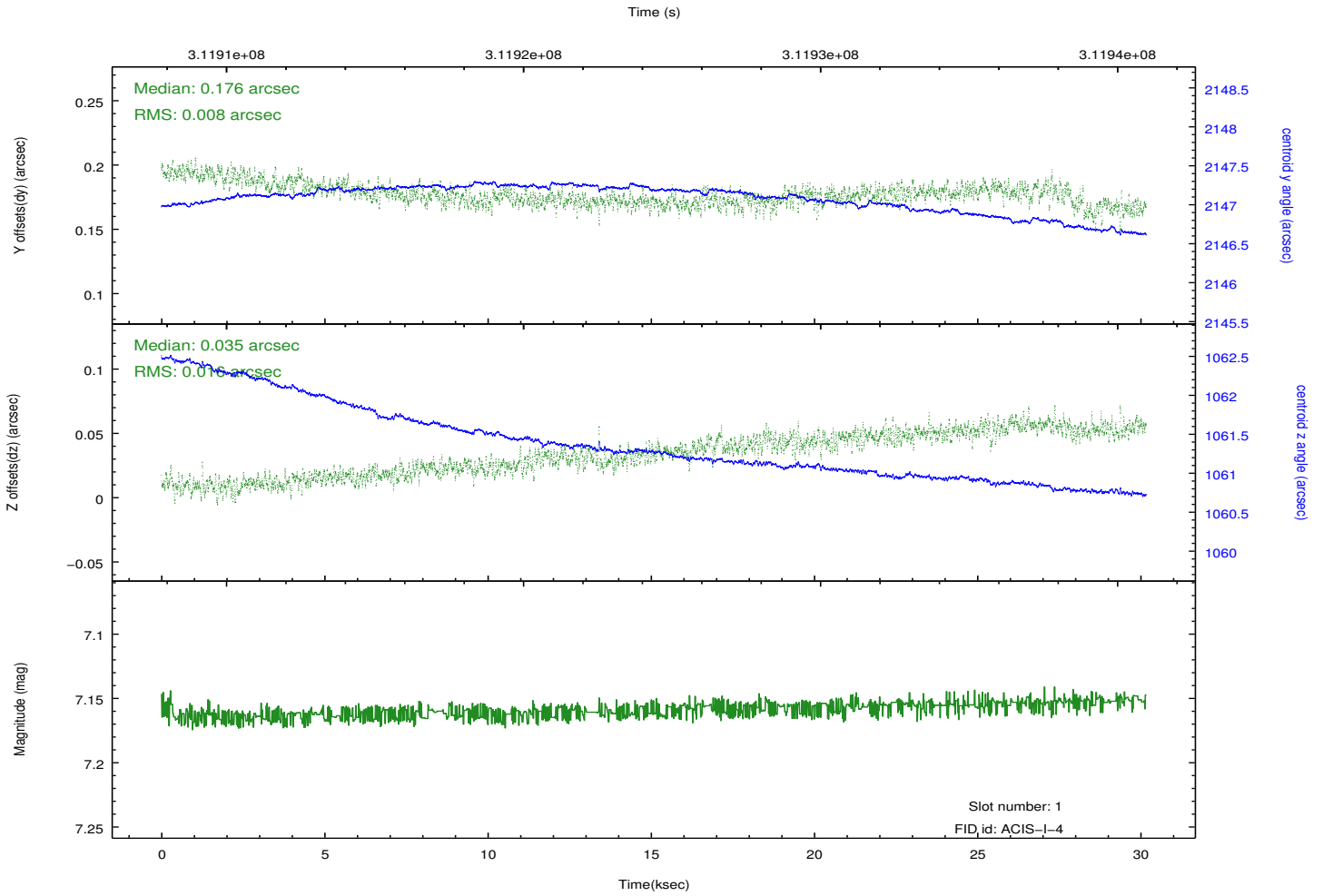
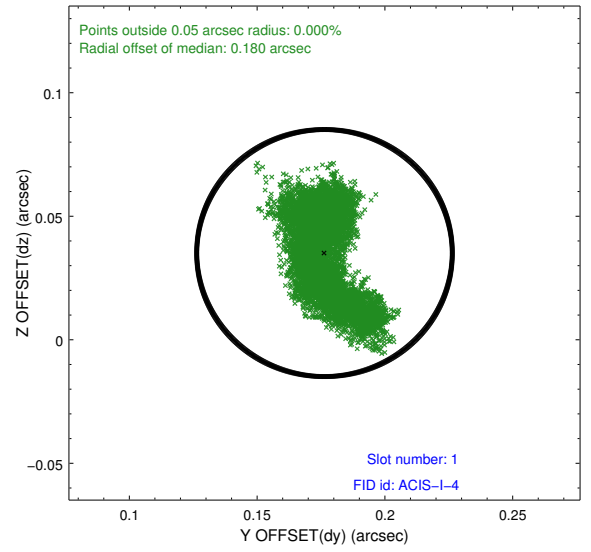
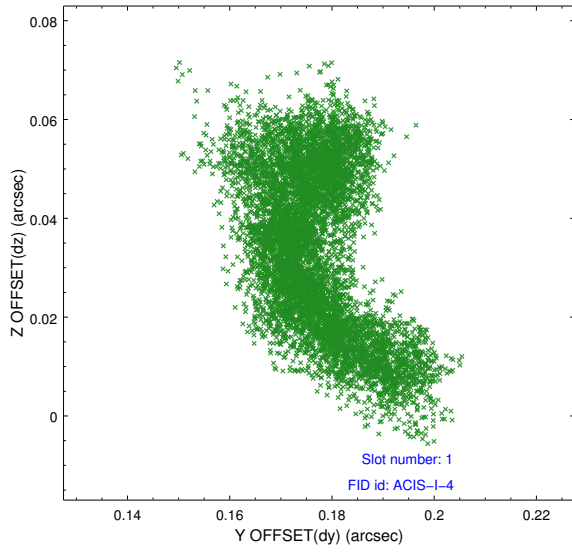


## 2.5 FID Slots

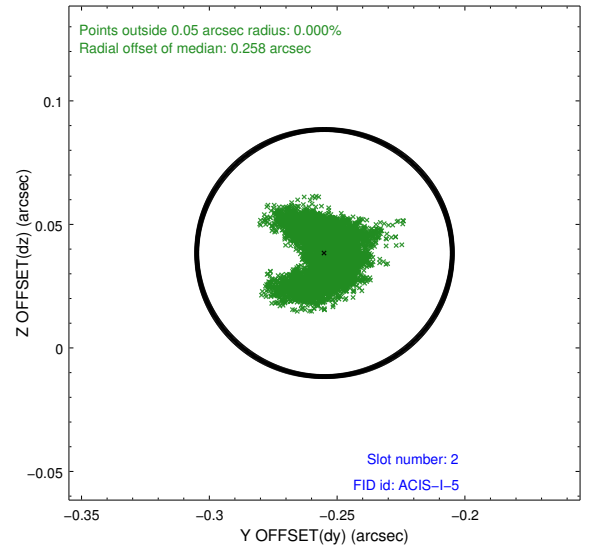
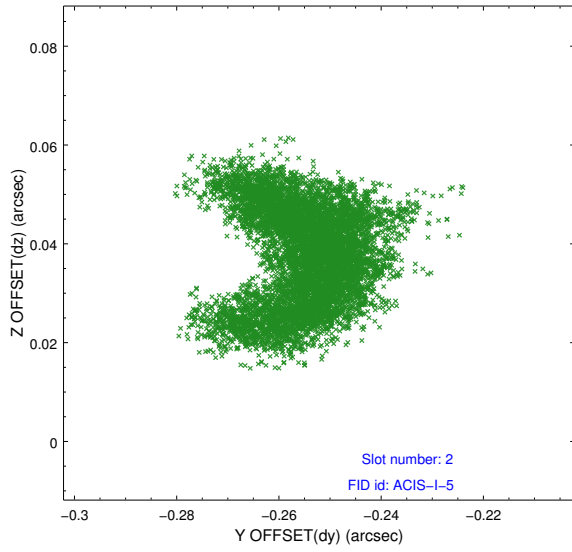
### 2.5.1 Slot 0



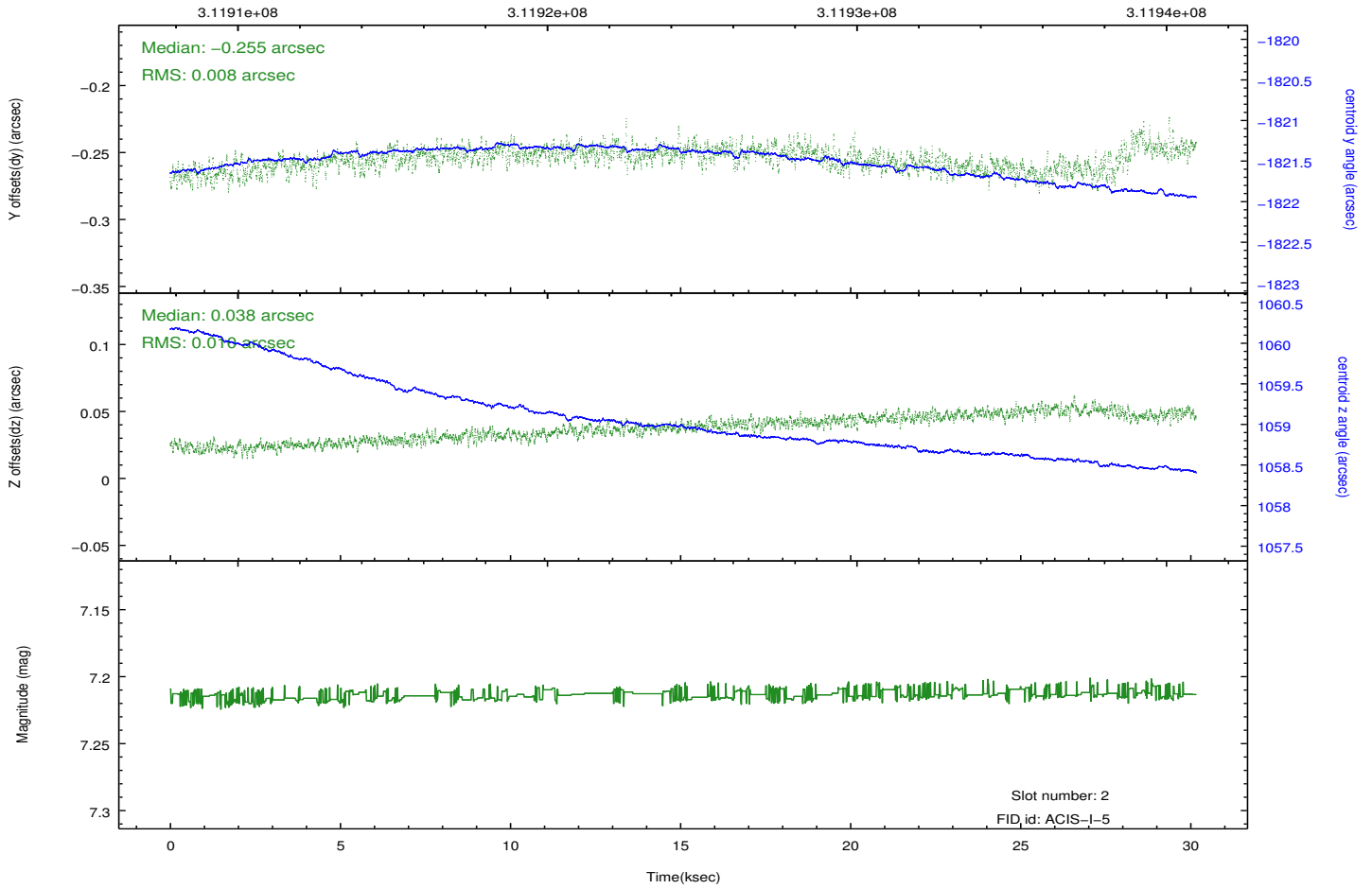
## 2.5.2 Slot 1



### 2.5.3 Slot 2



Time (s)



# A Summary

## A.1 Status

V&V Scientist	Beth Sundheim
V&V Date (YYYY-MM-DD)	2012.05.07
V&V Edition	1
V&V Disposition and Status	OK
V&V Charge Time	30.0895998

## A.2 Comments