

V&V Reference Report

L2 ASCDS Version : 8.4.4

Observation 8173 - L2 Version 2
Chandra X-Ray Center

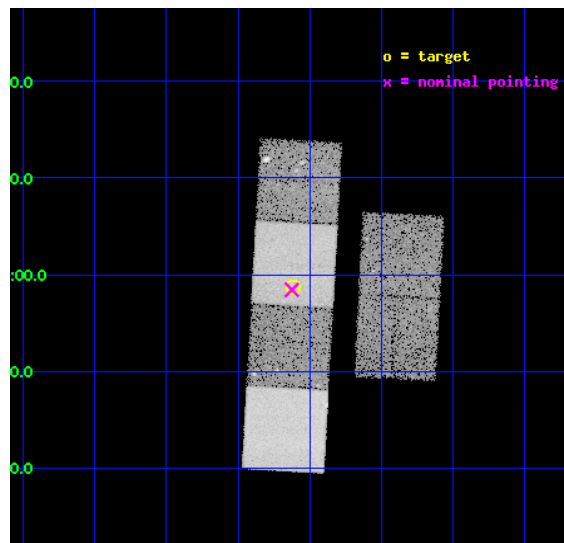
L2 Processing Date : May 1 2012

Contents

1	Front	2
2	OBI	3
2.1	OBI	3
2.1.1	Images	3
2.1.2	Bias	3
2.1.3	Parameters	4
2.1.4	Events	4
2.2	Compared Parameters	5
2.3	Aspect	6
2.4	Star Slots	9
2.4.1	Slot 3	9
2.4.2	Slot 4	10
2.4.3	Slot 5	11
2.4.4	Slot 6	12
2.4.5	Slot 7	13
2.5	FID Slots	14
2.5.1	Slot 0	14
2.5.2	Slot 1	15
2.5.3	Slot 2	16
A	Summary	17
A.1	Status	17
A.2	Comments	17

1 Front

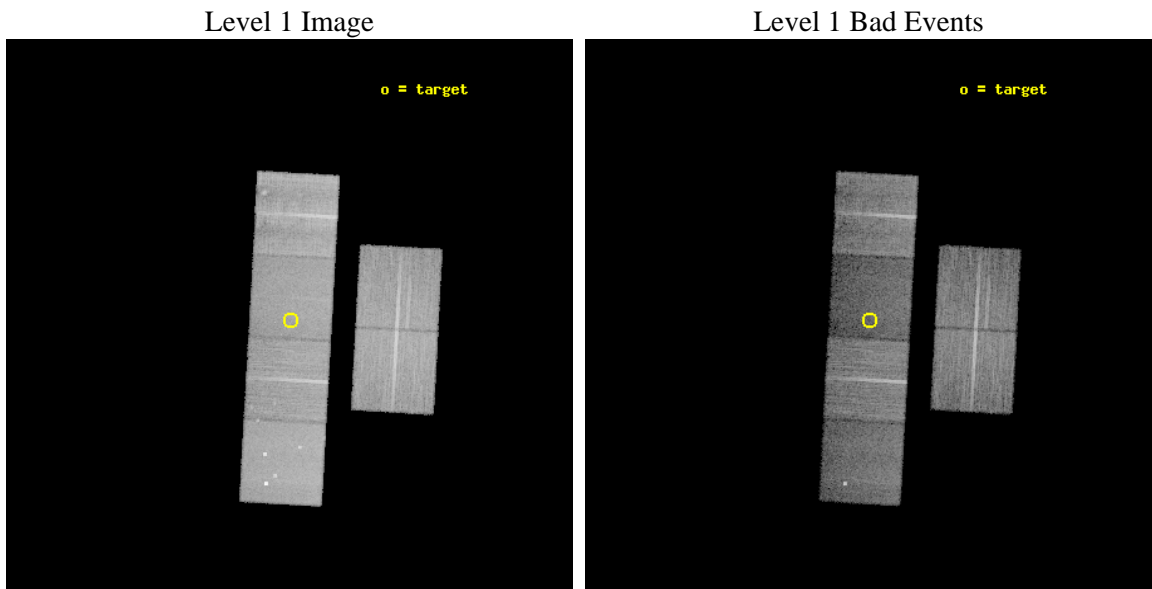
seq_num	600610	Sequence number
obs_id	8173	Observation id
title	The Galactic Generation-X: The First Study of the X-ray Properties of Massive E+A Galaxies	Proposal title
observer	Dr. Adrienne Juett	Principal investigator
object	SDSSJ225506.79+005839.9	Source name
dtcycle	0	
cycle	P	events from which exps? Prim/Second/Both
ra_targ	343.778333	Observer's specified target RA [deg]
dec_targ	0.97775	Observer's specified target Dec [deg]
ra_nom	343.7810976566	Nominal RA [deg]
dec_nom	0.97376827339111	Nominal Dec [deg]
roll_nom	273.15657174358	Nominal Roll [deg]
revision	2	Processing version of data
ontime	16150.399939895	Sum of GTIs [s]
livetime	15945.893851252	Livetime [s]
ontime2	16150.399939895	Sum of GTIs [s]
ontime3	16150.399939895	Sum of GTIs [s]
ontime5	16150.399939895	Sum of GTIs [s]
ontime6	16150.399939895	Sum of GTIs [s]
ontime7	16150.399939895	Sum of GTIs [s]
ontime8	16150.399939895	Sum of GTIs [s]
l2events	170461	Number of level 2 events



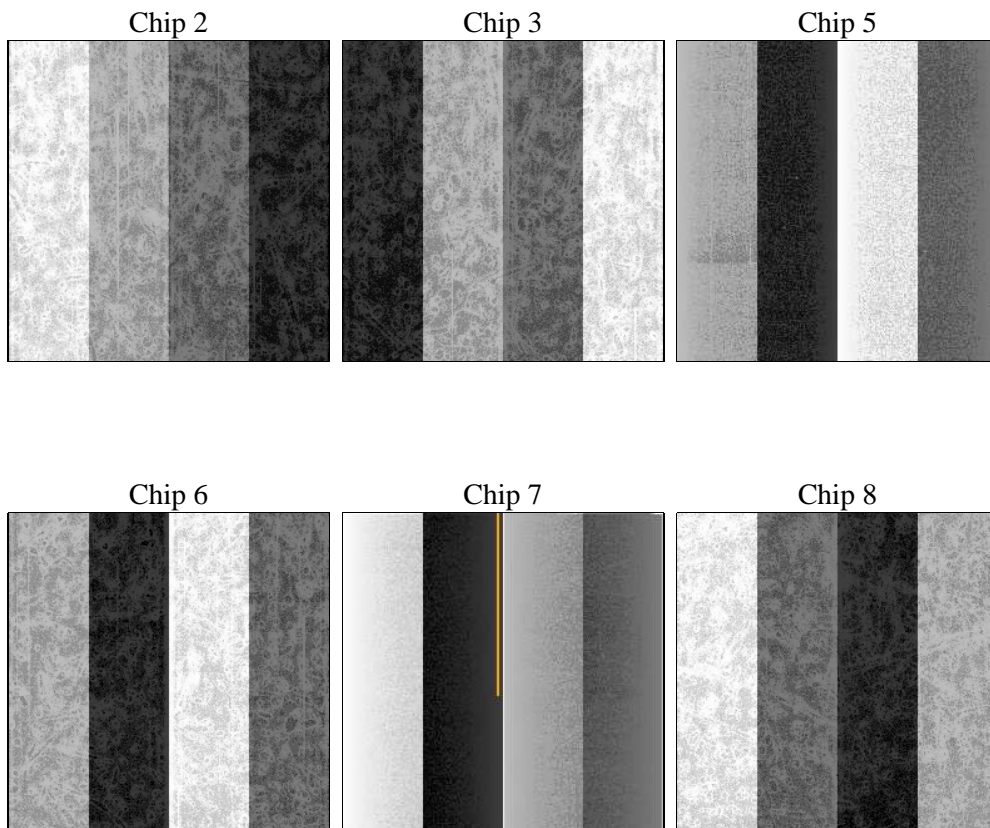
2 OBI

2.1 OBI

2.1.1 Images



2.1.2 Bias



2.1.3 Parameters

obi_num	1	Obi number	sched_exp_time	16000.000000	[s] Scheduled observation exposure time
ascdsver	8.4.4	Processing system revision	ontime	16150.399939895	Sum of GTIs [s]
caldbver	4.4.9	 	ontime2	16150.399939895	Sum of GTIs [s]
date	2012-05-01T22:15:16	Date and time of file creation	ontime3	16150.399939895	Sum of GTIs [s]
revision	2	Processing version of data	ontime5	16150.399939895	Sum of GTIs [s]
			ontime6	16150.399939895	Sum of GTIs [s]
			ontime7	16150.399939895	Sum of GTIs [s]
			ontime8	16150.399939895	Sum of GTIs [s]
			l1events	856584	Number of level 1 events

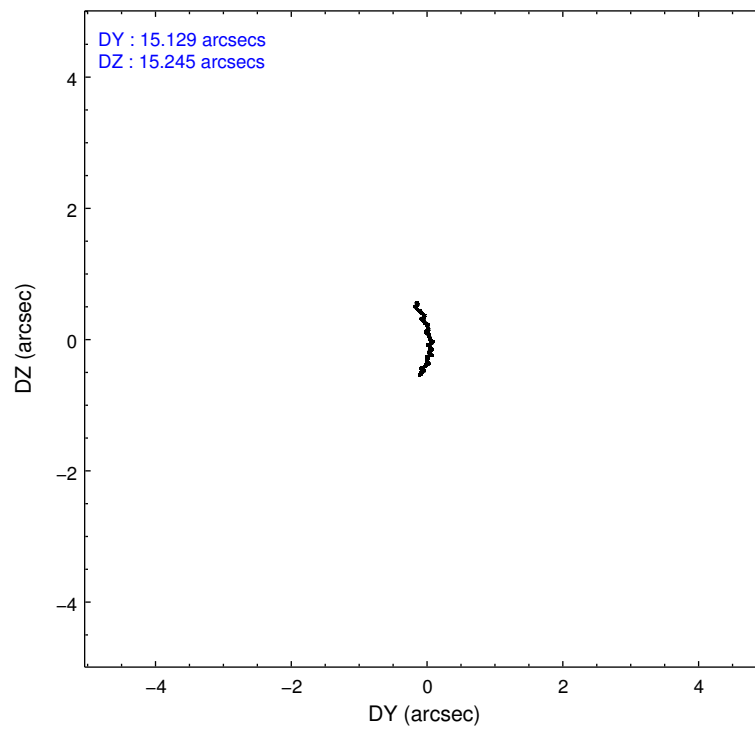
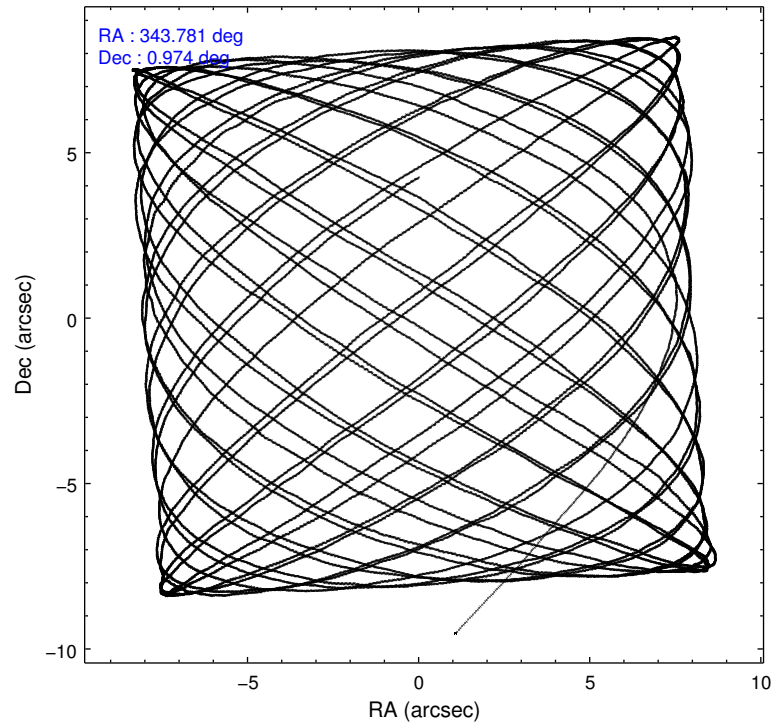
2.1.4 Events

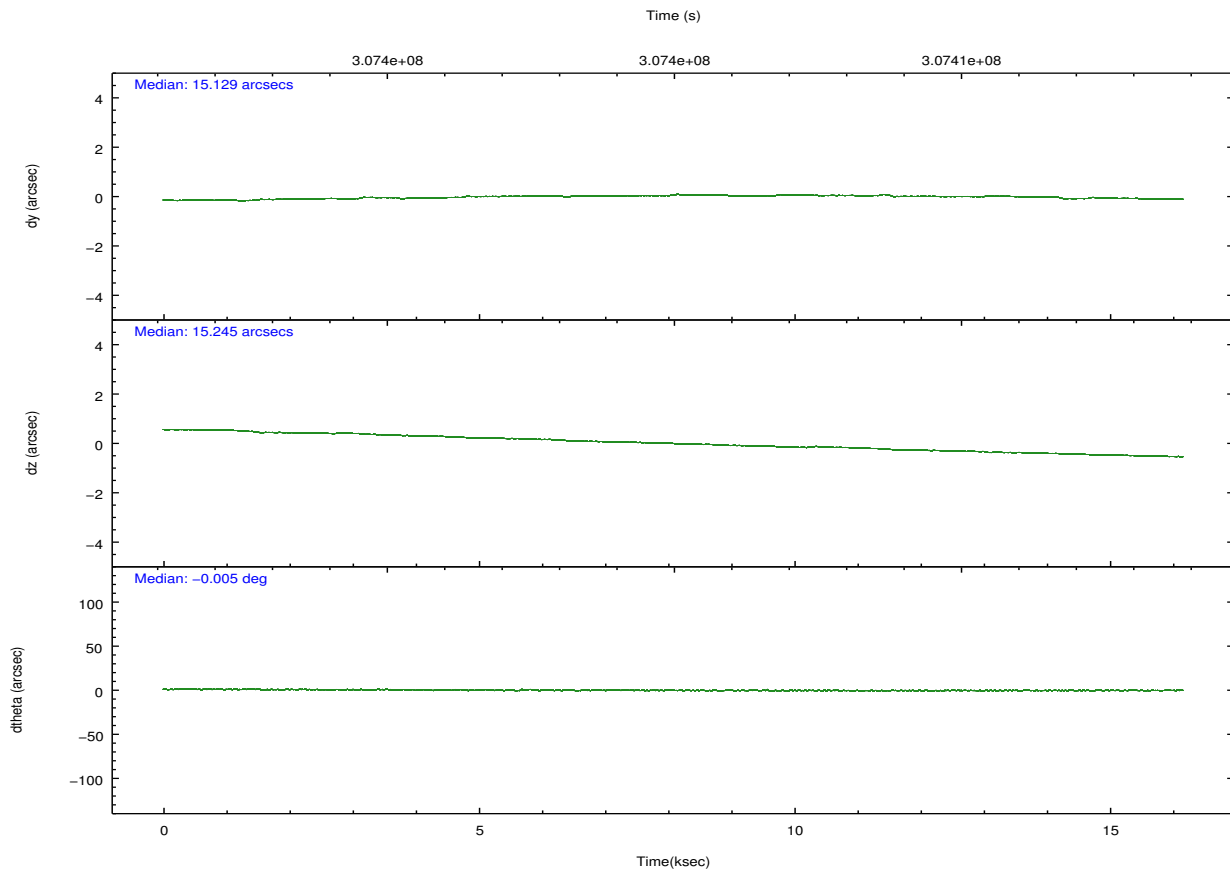
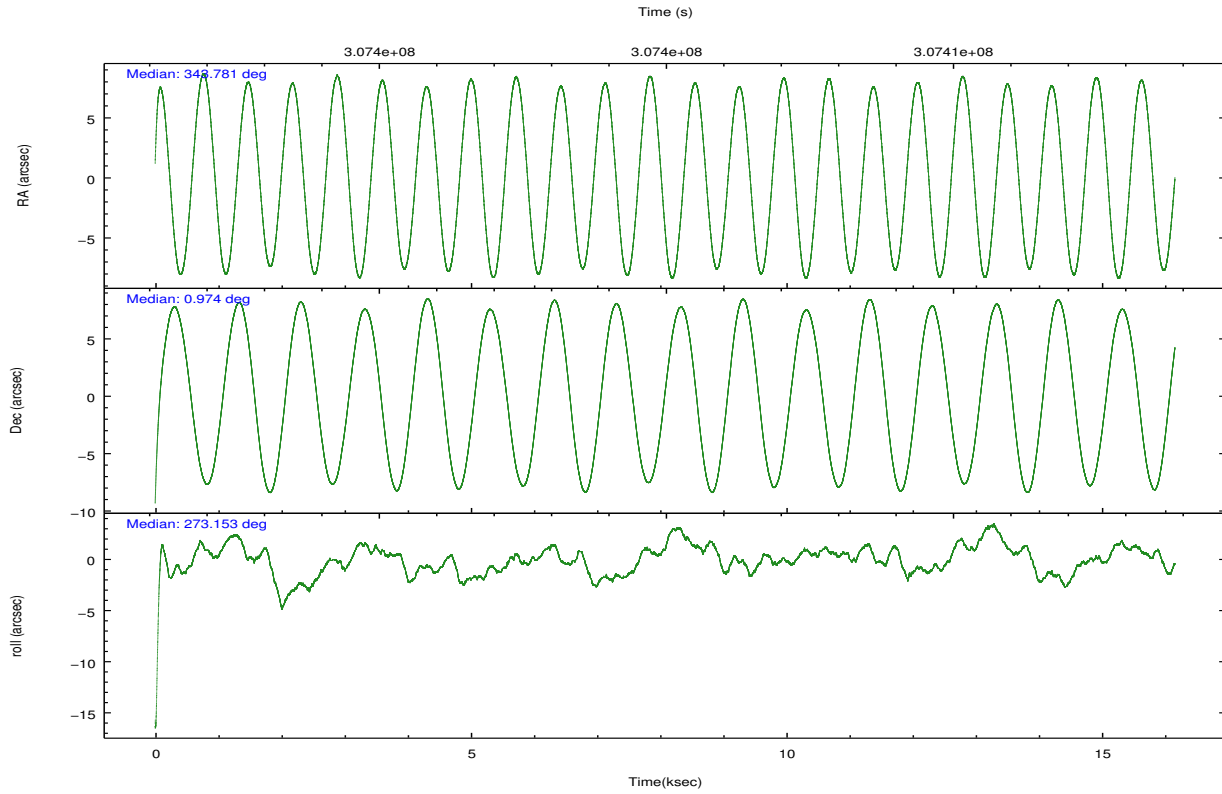
	ccd 2	ccd 3	ccd 5	ccd 6	ccd 7	ccd 8		ccd 2	ccd 3	ccd 5	ccd 6	ccd 7	ccd 8
level 1 events	144743	126678	166582	132754	123167	162660	grade 0 events	4602	4284	10685	5152	6130	11939
rejected events	133039	115749	84630	120138	67208	124141		3%	3%	6%	3%	4%	7%
rejected %	91%	91%	50%	90%	54%	76%	grade 1 events	94	93	340	63	179	134
								0%	0%	0%	0%	0%	0%
							grade 2 events	3195	2591	27607	2888	12499	9578
								2%	2%	16%	2%	10%	5%
							grade 3 events	1354	1385	3758	1486	5592	4605
								0%	1%	2%	1%	4%	2%
							grade 4 events	1330	1362	3595	1431	5723	4264
								0%	1%	2%	1%	4%	2%
							grade 5 events	3743	4442	13482	4336	13088	6732
								2%	3%	8%	3%	10%	4%
							grade 6 events	2194	2283	43157	2614	30630	11031
								1%	1%	25%	1%	24%	6%
							grade 7 events	128231	110238	63958	114784	49326	114377
								88%	87%	38%	86%	40%	70%

2.2 Compared Parameters

Parameter	Planned	Actual	Parameter	Planned	Actual
Instrument	ACIS	ACIS	Obspar format version number	7	7
Detector	ACIS-235678	ACIS-235678	Obspar file type	PREDICTED	ACTUAL
Grating	NONE	NONE	Obspar update status	NONE	UPDATED
Data mode	VFAINT	VFAINT	CCD I0 on	N	N
Observation mode	POINTING	POINTING	CCD I1 on	N	N
[deg] Pointing RA	343.765840	343.7810976565978	CCD I2 on	O2	Y
[deg] Pointing Dec	0.996454	0.9737682733911147	CCD I3 on	O3	Y
[deg] Pointing Roll	273.000223	273.1565717435829	CCD S0 on	N	N
[mm] SIM focus pos	-0.684267	-0.6828225247311905	CCD S1 on	O5	Y
[mm] SIM defocus	0	0.001444936568705701	CCD S2 on	O4	Y
[mm] SIM translation stage pos	-190.132523	-190.1400660498719	CCD S3 on	Y	Y
[mm] SIM translation stage offset	0	0.00754346686406393	CCD S4 on	O1	Y
[s] Observation start time (MET)	307397042.184000	307395317.03497	CCD S5 on	N	N
Observation start date	2007-09-28T20:02:57	2007-09-28T19:35:17	Number of optional ACIS chips dropped	0	0
[s] Observation end time (MET)	307413042.184000	307413784.97336	On-chip summing requested	N	N
Observation end date	2007-09-29T00:29:37	2007-09-29T00:43:04	Subarray requested	NONE	NONE
Read mode	TIMED	TIMED	Alternating exposures requested	N	N
			[s] Primary exposure time	0.000000	3.2

2.3 Aspect



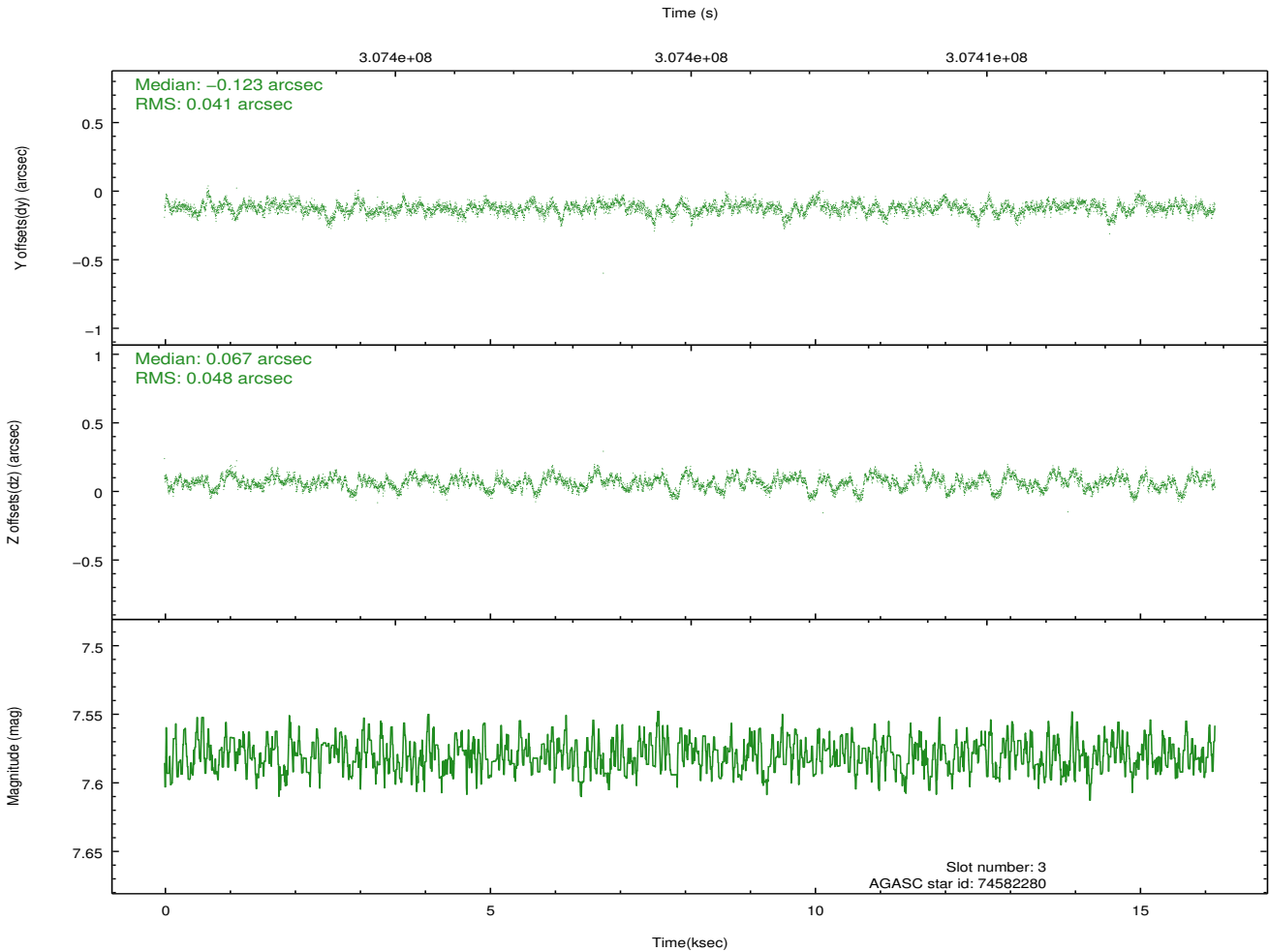
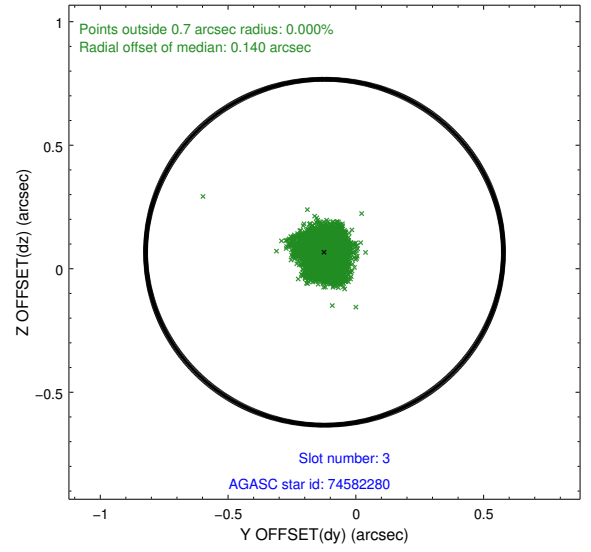
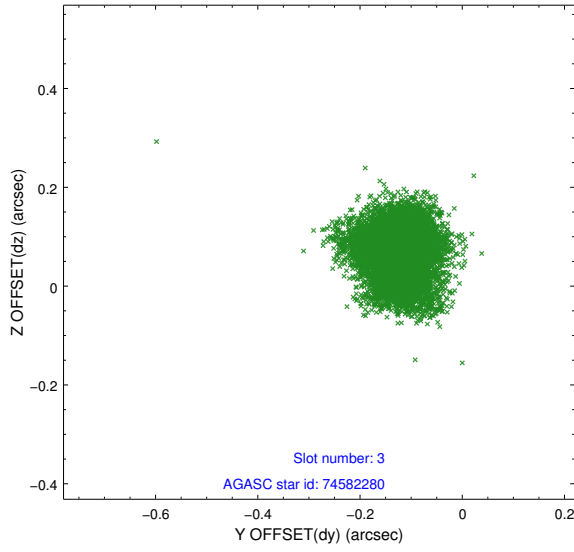


Slot Statistics

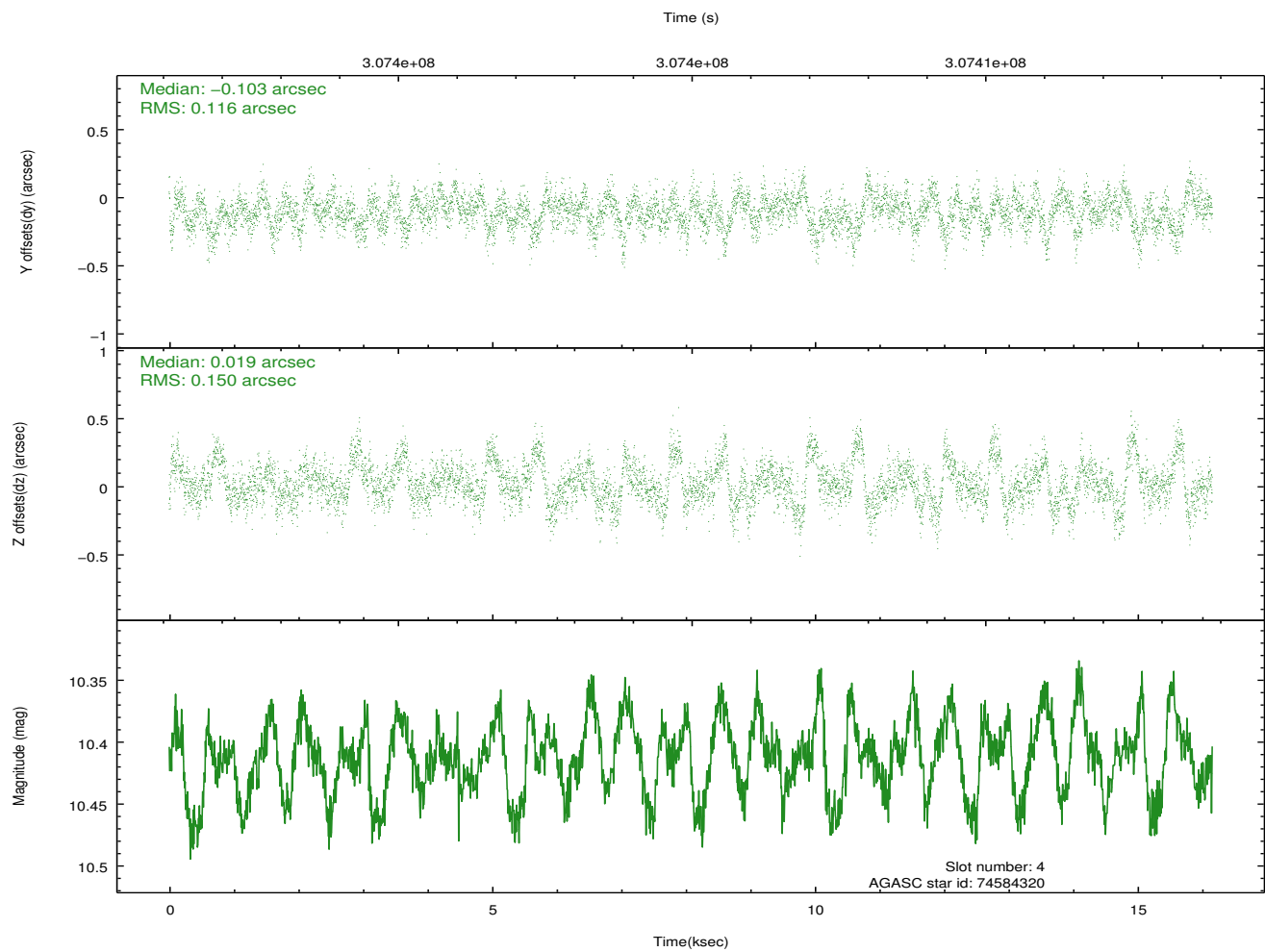
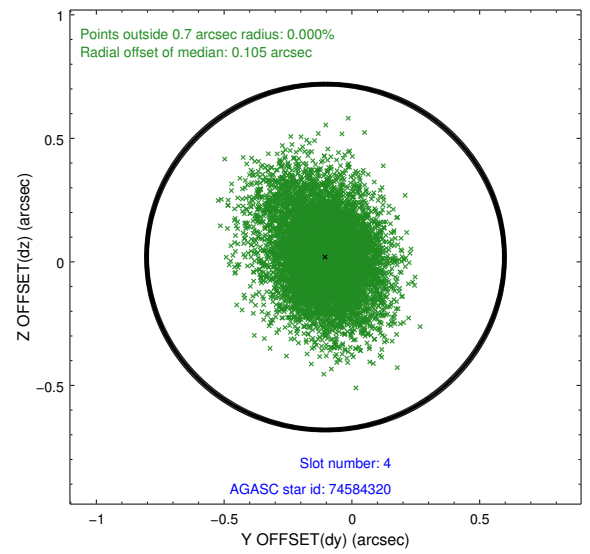
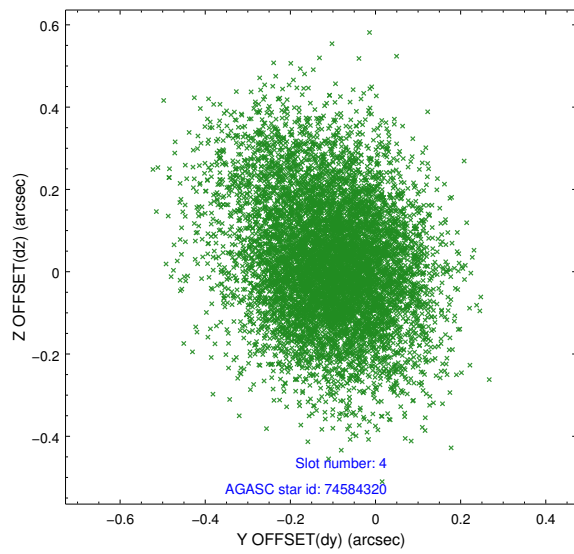
slot	status	id	mag	n_pts	med_dy	med_dz	dr1	dr2	ra	dec	mean_y	mean_z
0	FID	ACIS-S-1	7.18	3942	0.015	-0.039	0.020	0.041	0.000000	0.000000	927.97	-1732.31
1	FID	ACIS-S-4	7.19	3942	0.138	0.025	0.014	0.024	0.000000	0.000000	2145.64	171.64
2	FID	ACIS-S-5	7.22	3941	-0.178	0.027	0.011	0.033	0.000000	0.000000	-1820.76	165.52
3	GUIDE	74582280	7.58	7883	-0.123	0.067	0.067	0.109	343.559422	0.415131	2051.48	-851.31
4	GUIDE	74584320	10.41	7877	-0.103	0.019	0.197	0.341	343.190927	1.501706	-1924.16	-1970.98
5	GUIDE	74584376	9.65	7876	0.092	0.108	0.116	0.190	343.296354	1.245745	-984.41	-1640.38
6	GUIDE	74592232	8.52	7881	-0.029	-0.071	0.078	0.125	344.219817	0.890541	466.01	1612.47
7	GUIDE	74582632	9.13	7874	0.173	-0.132	0.115	0.197	343.142266	0.483507	1727.31	-2337.94

2.4 Star Slots

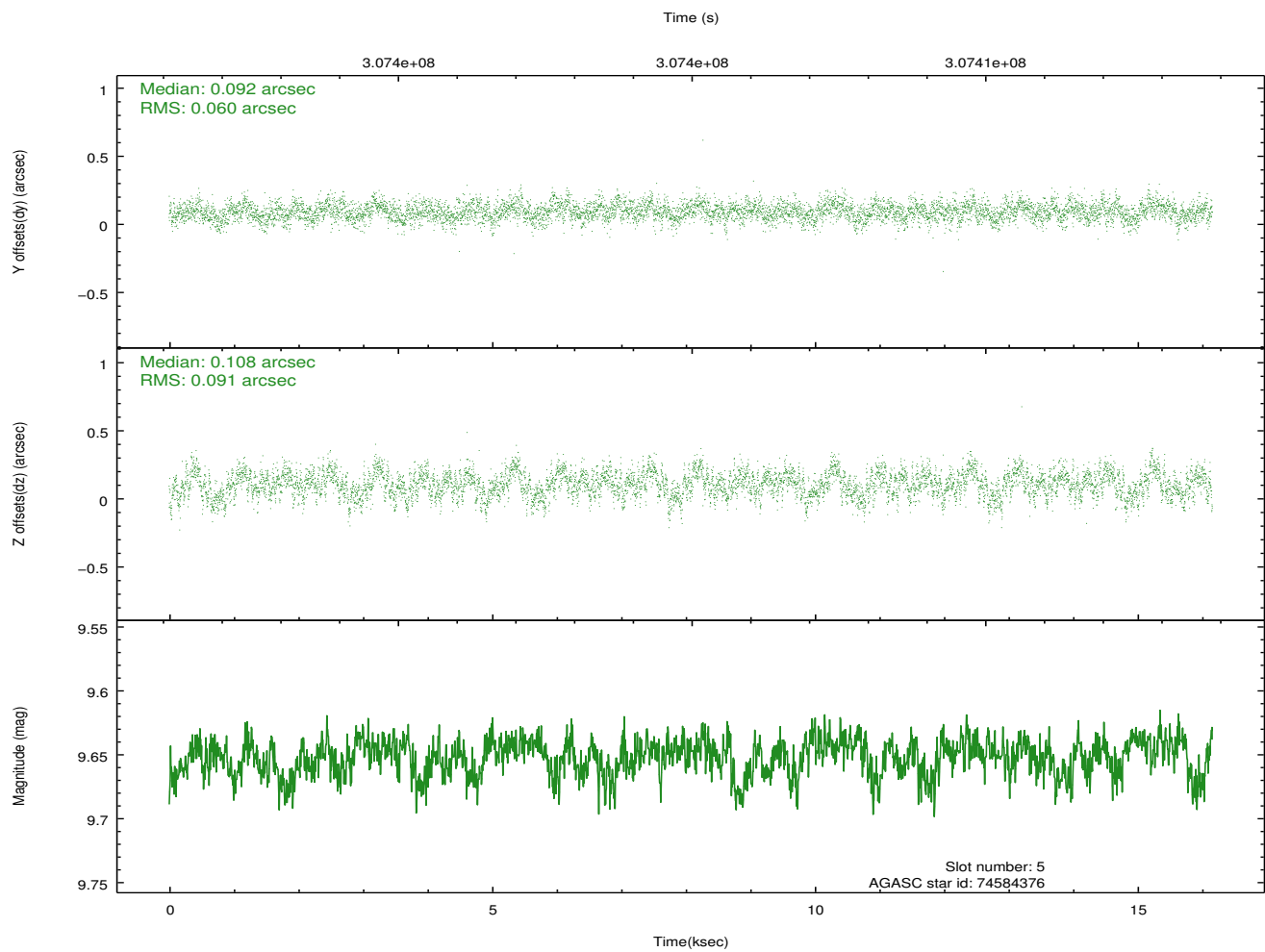
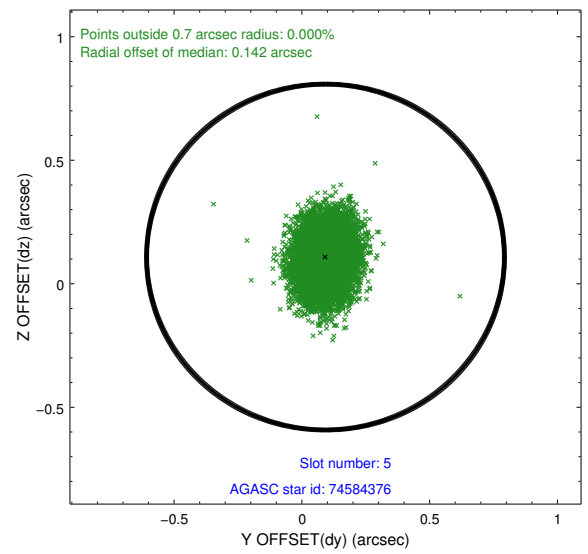
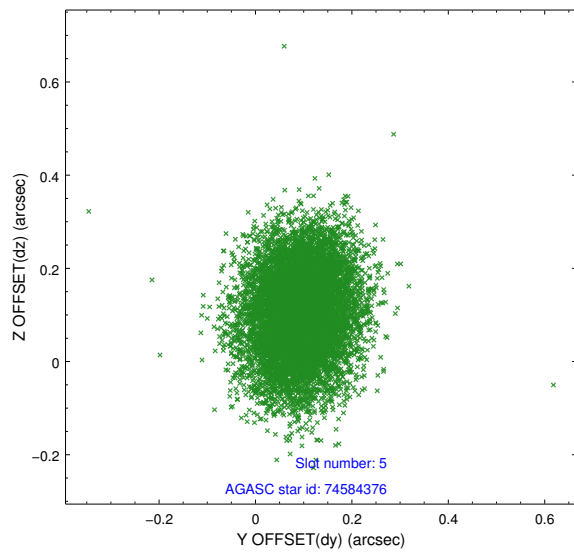
2.4.1 Slot 3



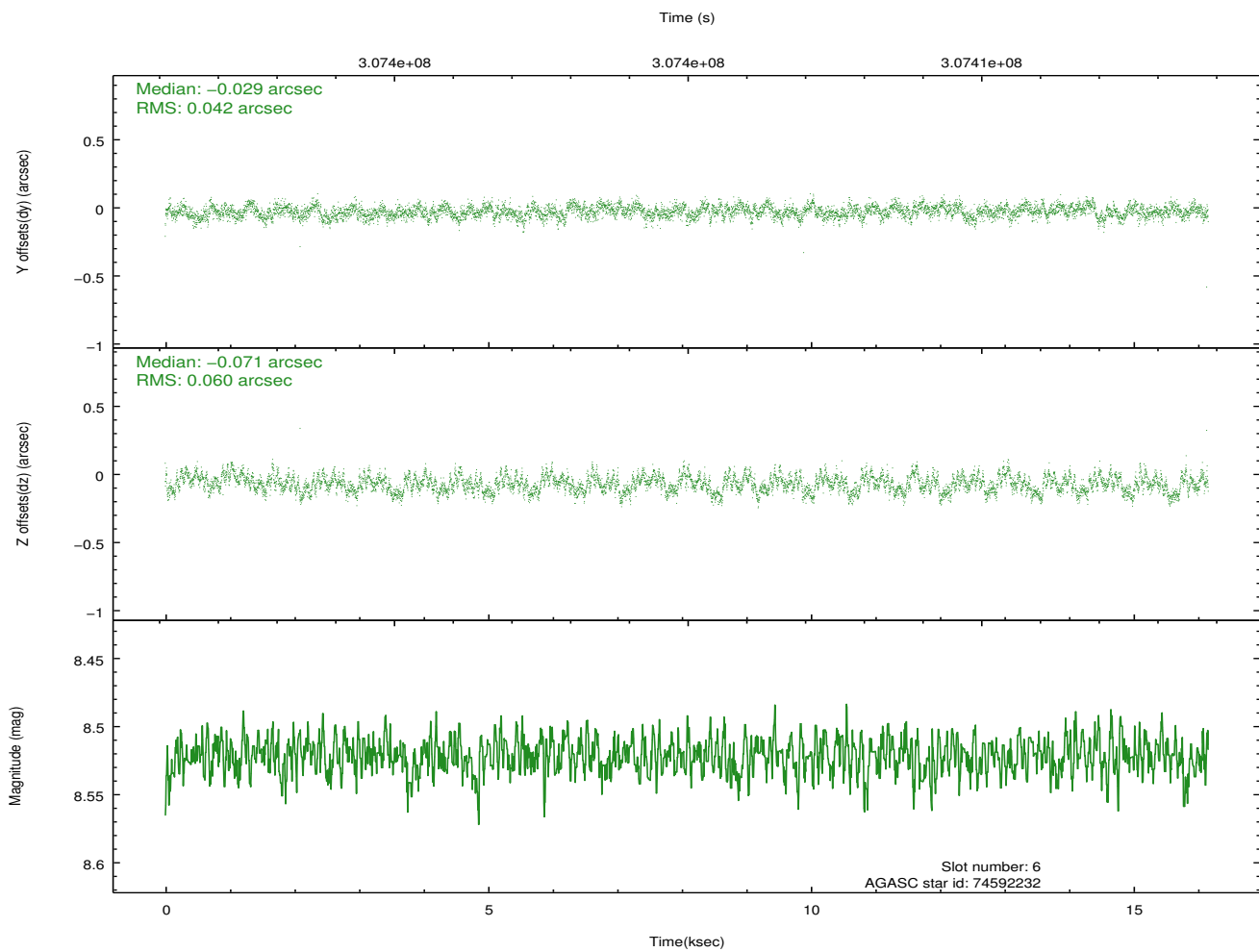
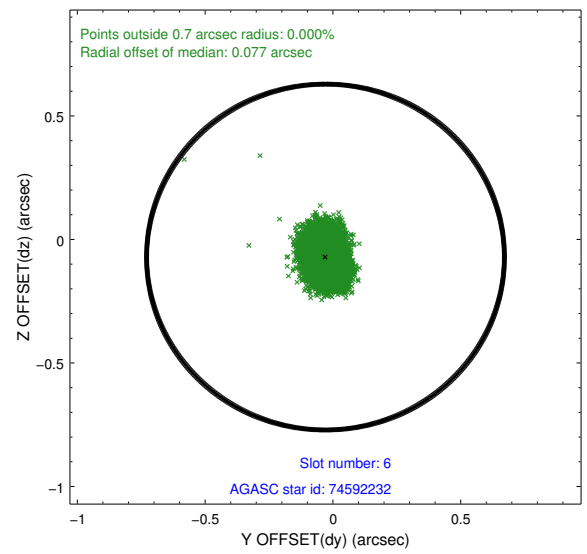
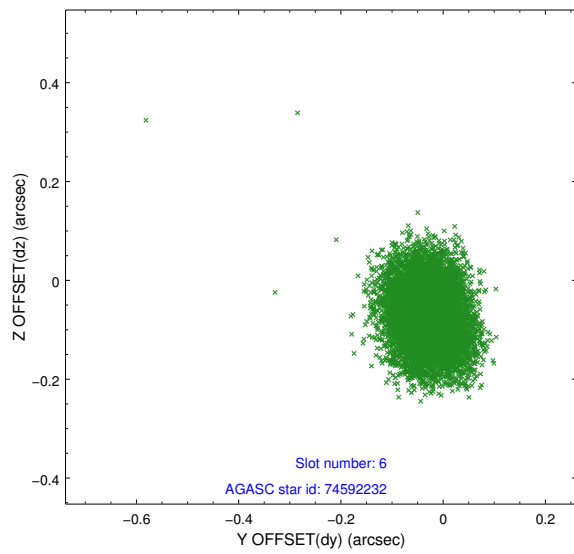
2.4.2 Slot 4



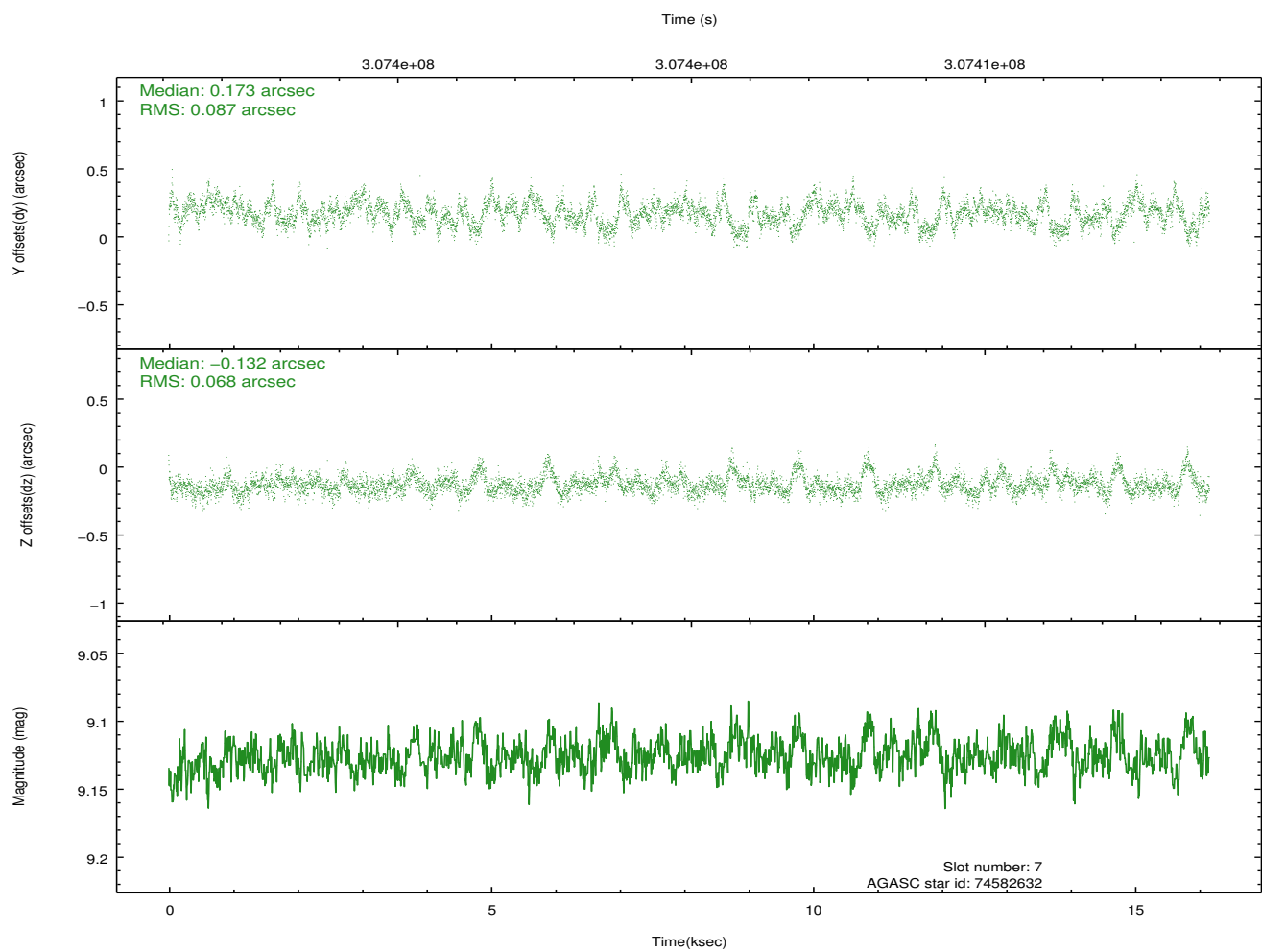
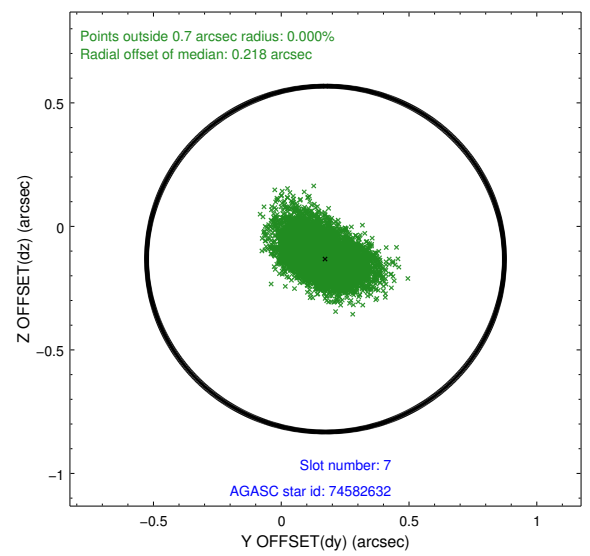
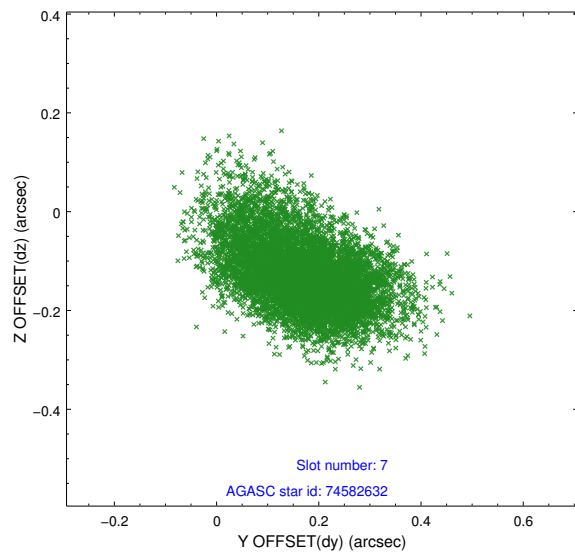
2.4.3 Slot 5



2.4.4 Slot 6

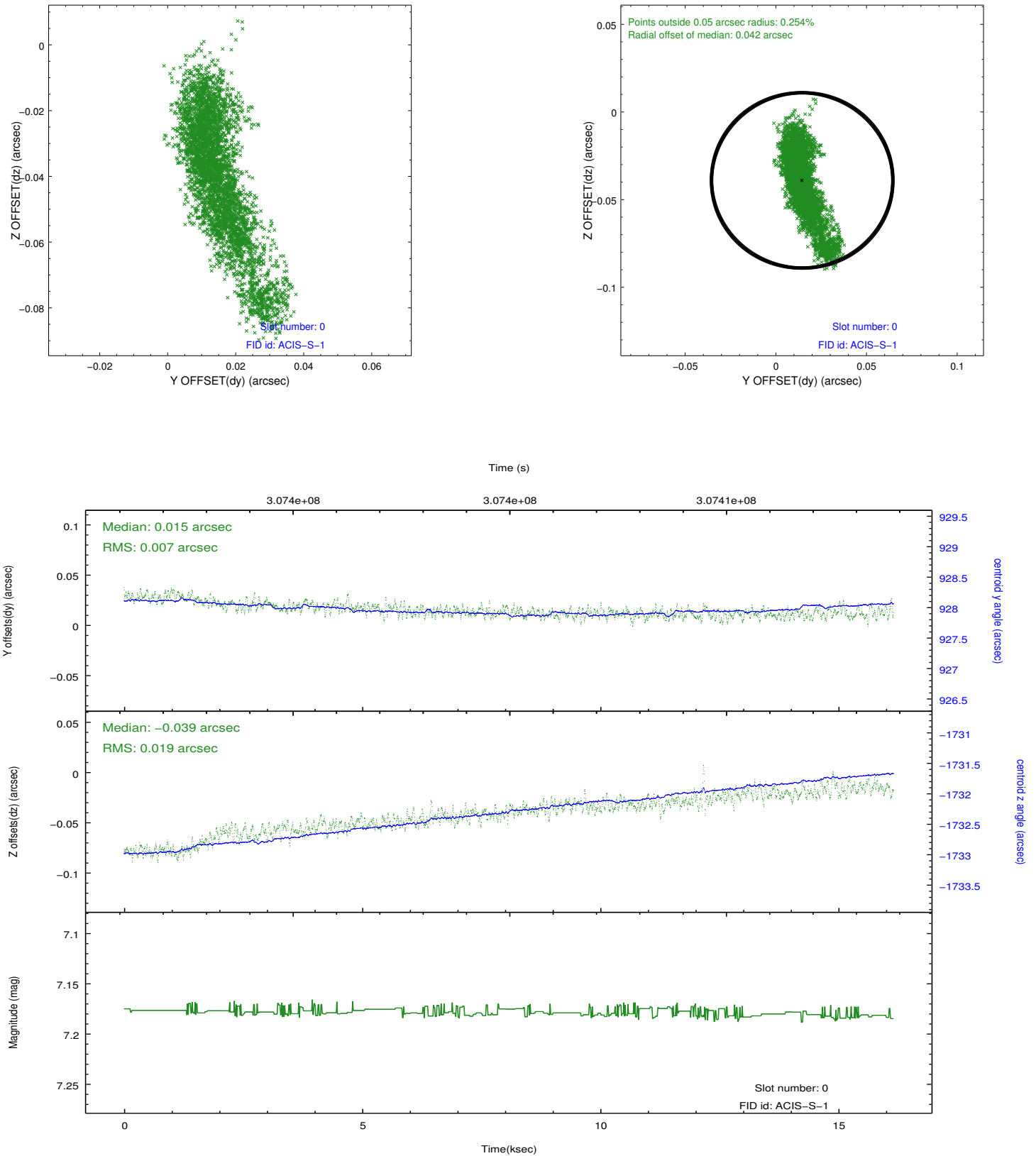


2.4.5 Slot 7

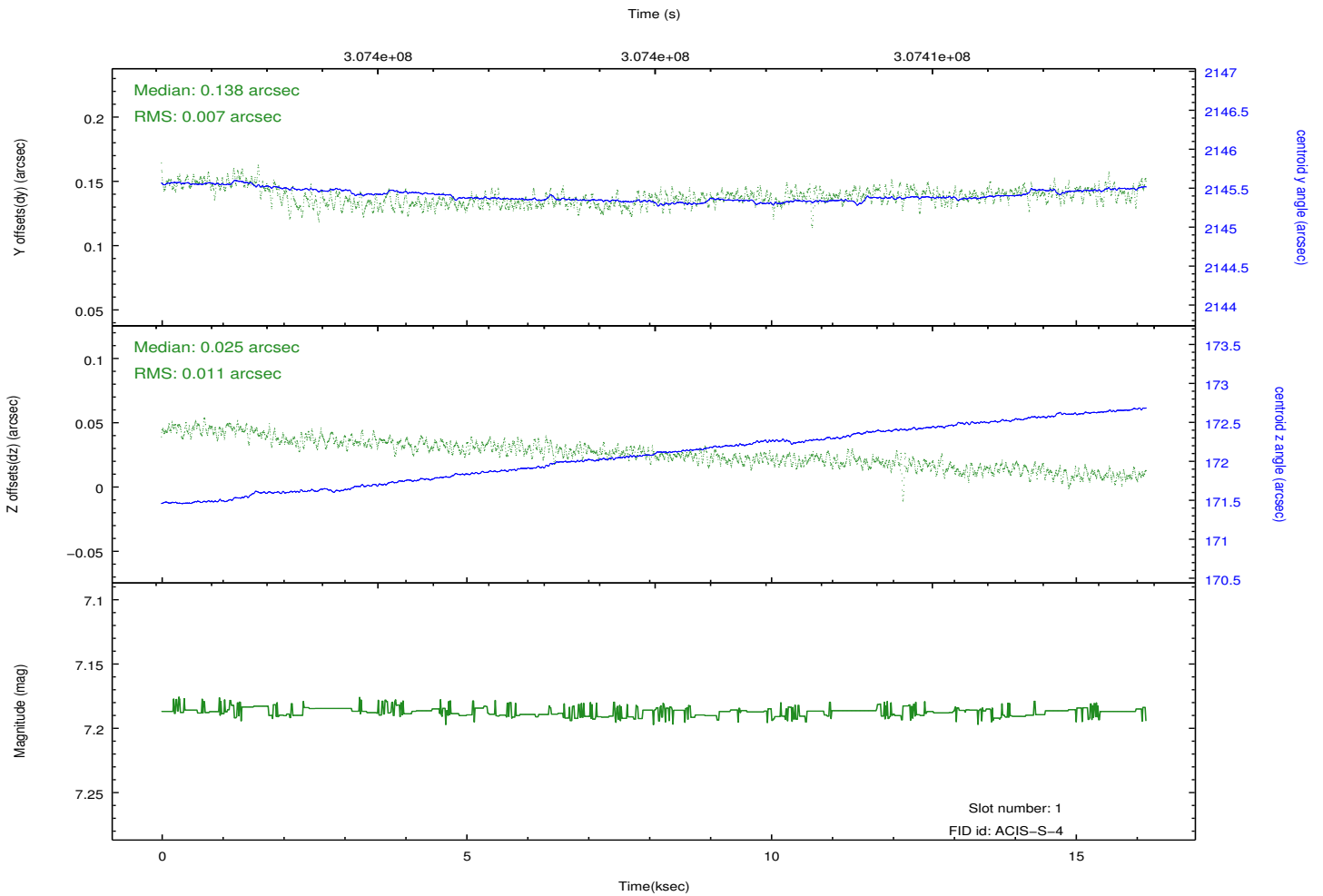
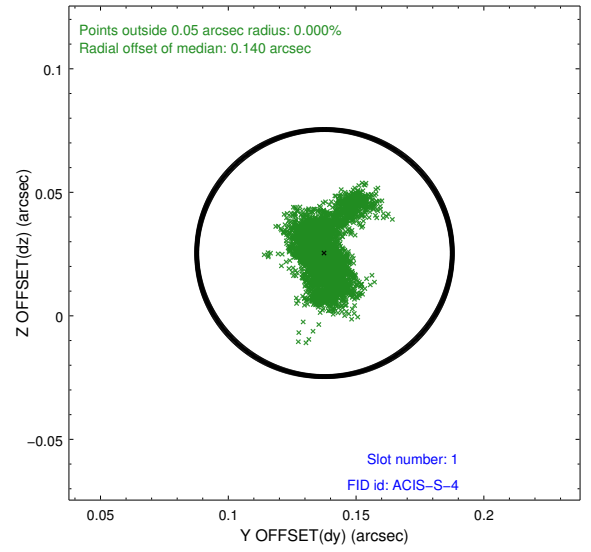
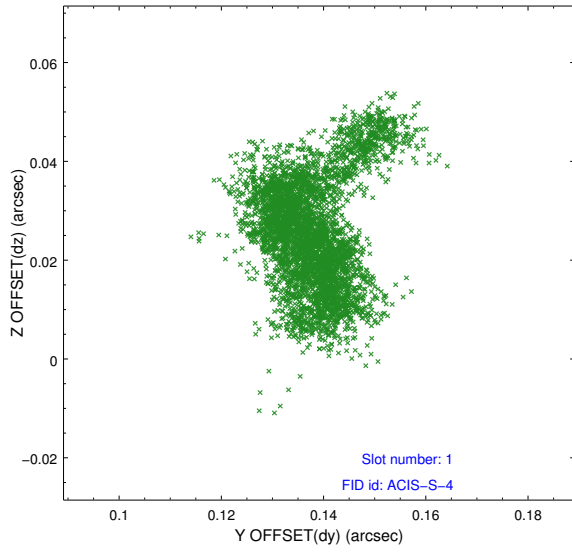


2.5 FID Slots

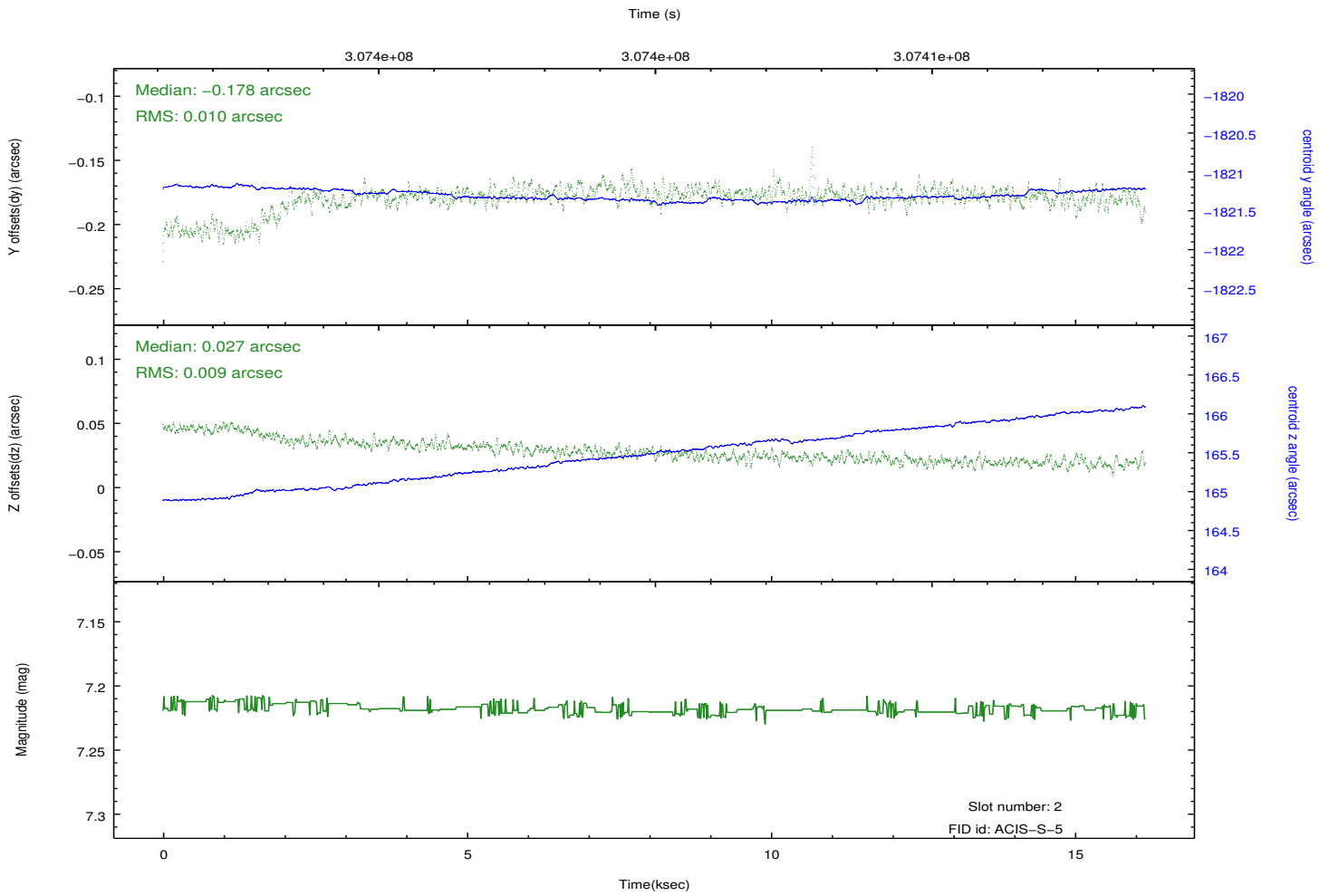
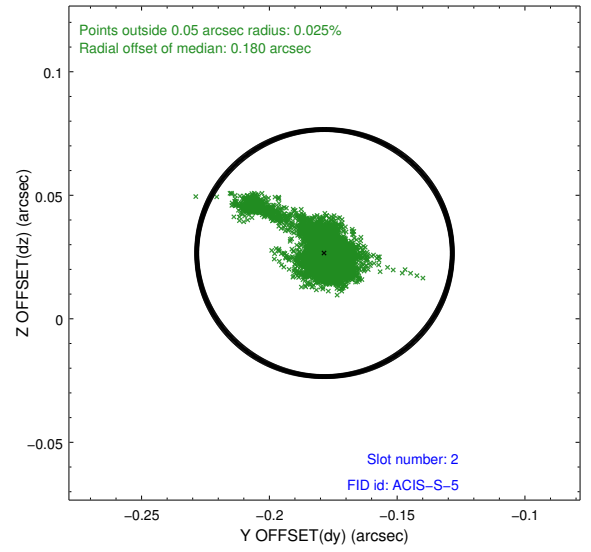
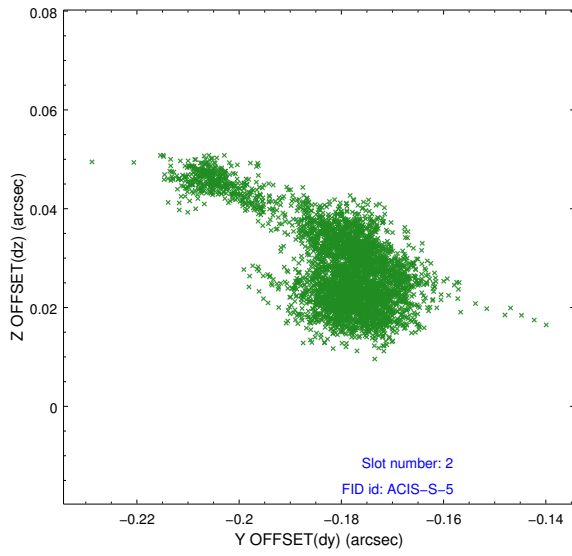
2.5.1 Slot 0



2.5.2 Slot 1



2.5.3 Slot 2



A Summary

A.1 Status

V&V Scientist	Jen Lauer
V&V Date (YYYY-MM-DD)	2012.05.04
V&V Edition	1
V&V Disposition and Status	OK
V&V Charge Time	16.1503999

A.2 Comments