

V&V Reference Report

L2 ASCDS Version : 8.4.4

Observation 8253 - L2 Version 3
Chandra X-Ray Center

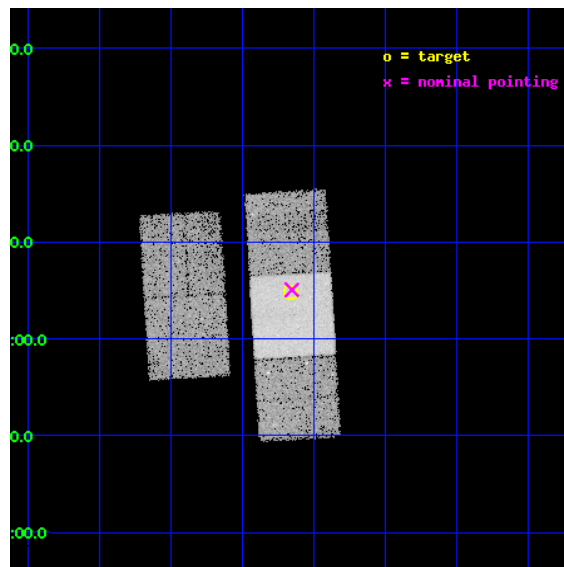
L2 Processing Date : Apr 20 2012

Contents

| | | |
|----------|-------------------------------|-----------|
| 1 | Front | 2 |
| 2 | OBI | 3 |
| 2.1 | OBI | 3 |
| 2.1.1 | Images | 3 |
| 2.1.2 | Bias | 3 |
| 2.1.3 | Parameters | 4 |
| 2.1.4 | Events | 4 |
| 2.2 | Compared Parameters | 5 |
| 2.3 | Aspect | 6 |
| 2.4 | Star Slots | 9 |
| 2.4.1 | Slot 3 | 9 |
| 2.4.2 | Slot 4 | 10 |
| 2.4.3 | Slot 5 | 11 |
| 2.4.4 | Slot 6 | 12 |
| 2.4.5 | Slot 7 | 13 |
| 2.5 | FID Slots | 14 |
| 2.5.1 | Slot 0 | 14 |
| 2.5.2 | Slot 1 | 15 |
| 2.5.3 | Slot 2 | 16 |
| A | Summary | 17 |
| A.1 | Status | 17 |
| A.2 | Comments | 17 |

1 Front

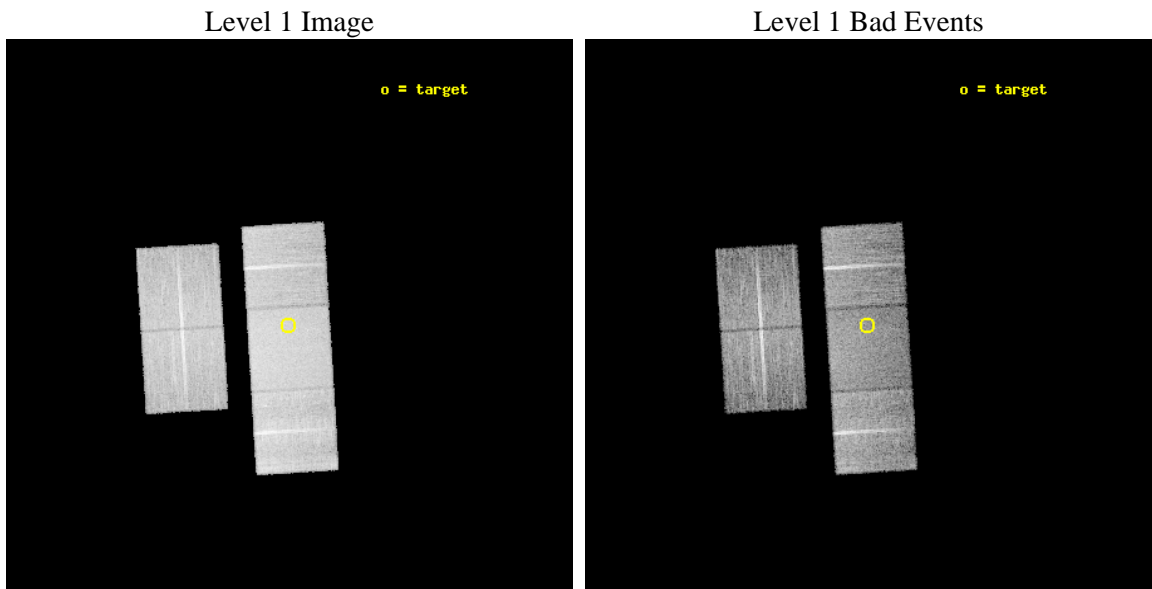
| | | |
|----------|--|---|
| seq_num | 701568 | Sequence number |
| obs_id | 8253 | Observation id |
| title | A snapshot X-ray/radio survey of AGNs selected from the long menu of SDSS galaxies | Proposal title |
| observer | Dr. Sebastian Heinz | Principal investigator |
| object | 2MASX J134909+040448 | Source name |
| dtcycle | 0 | |
| cycle | P | events from which exps? Prim/Second/Both |
| ra_targ | 207.290083 | Observer's specified target RA [deg] |
| dec_targ | 4.0801 | Observer's specified target Dec [deg] |
| ra_nom | 207.28779493411 | Nominal RA [deg] |
| dec_nom | 4.0843610322917 | Nominal Dec [deg] |
| roll_nom | 86.519319242901 | Nominal Roll [deg] |
| revision | 3 | Processing version of data |
| ontime | 11150.700085759 | Sum of GTIs [s] |
| livetime | 11005.007980113 | Livetime [s] |
| ontime2 | 11150.700085759 | Sum of GTIs [s] |
| ontime3 | 11150.700085759 | Sum of GTIs [s] |
| ontime6 | 11150.700085759 | Sum of GTIs [s] |
| ontime7 | 11150.700085759 | Sum of GTIs [s] |
| ontime8 | 11150.700085759 | Sum of GTIs [s] |
| l2events | 102475 | Number of level 2 events |



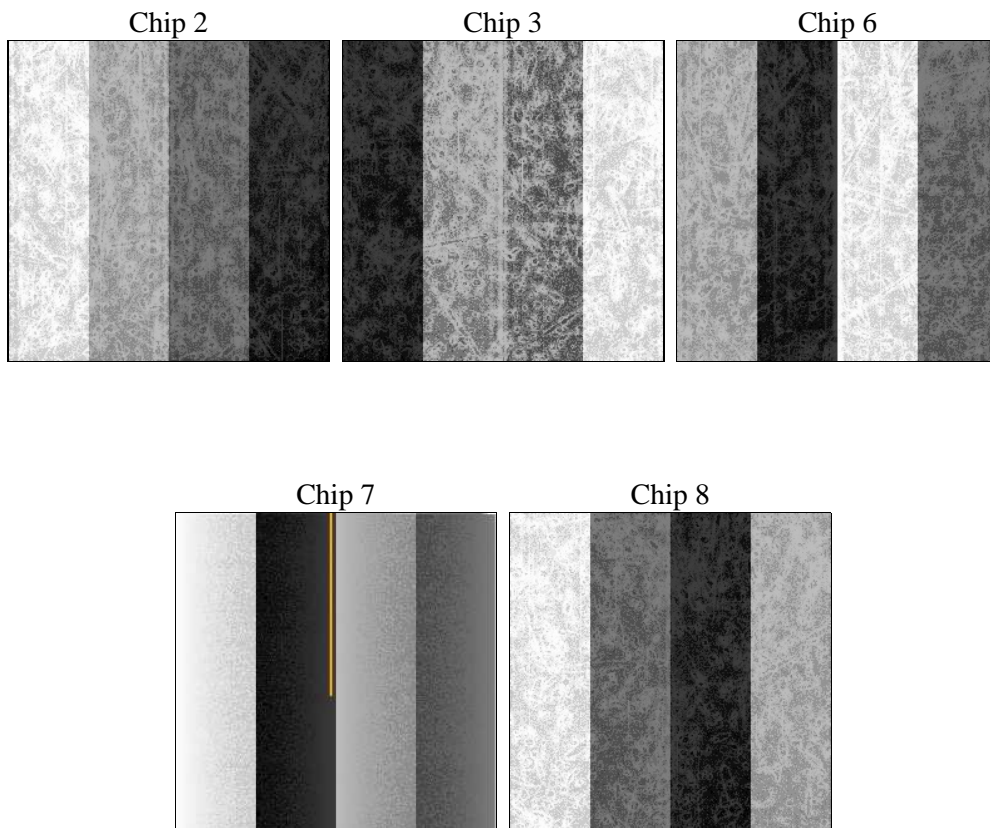
2 OBI

2.1 OBI

2.1.1 Images



2.1.2 Bias



2.1.3 Parameters

| | | | | | |
|----------|---------------------|--------------------------------|----------------|-----------------|---|
| obi_num | 0 | Obi number | sched_exp_time | 11000.000000 | [s] Scheduled observation exposure time |
| ascdsver | 8.4.4 | Processing system revision | ontime | 11150.700085759 | Sum of GTIs [s] |
| caldbver | 4.4.9 | | ontime2 | 11150.700085759 | Sum of GTIs [s] |
| date | 2012-04-21T01:10:50 | Date and time of file creation | ontime3 | 11150.700085759 | Sum of GTIs [s] |
| revision | 3 | Processing version of data | ontime6 | 11150.700085759 | Sum of GTIs [s] |
| | | | ontime7 | 11150.700085759 | Sum of GTIs [s] |
| | | | ontime8 | 11150.700085759 | Sum of GTIs [s] |
| | | | l1events | 616606 | Number of level 1 events |

2.1.4 Events

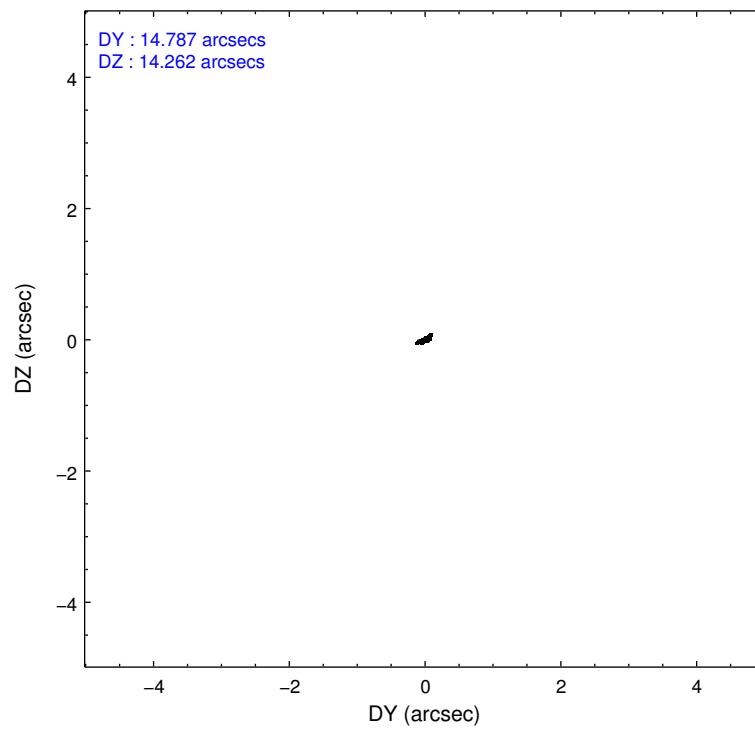
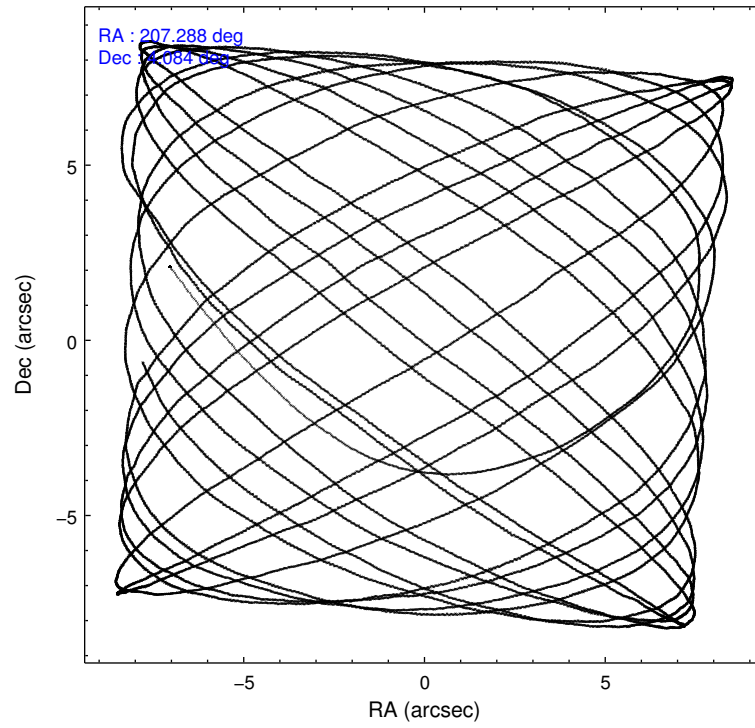
| | ccd 2 | ccd 3 | ccd 6 | ccd 7 | ccd 8 |
|-----------------|--------|--------|--------|--------|--------|
| level 1 events | 106170 | 107124 | 111266 | 149842 | 142204 |
| rejected events | 94314 | 94762 | 98853 | 91188 | 112650 |
| rejected % | 88% | 88% | 88% | 60% | 79% |

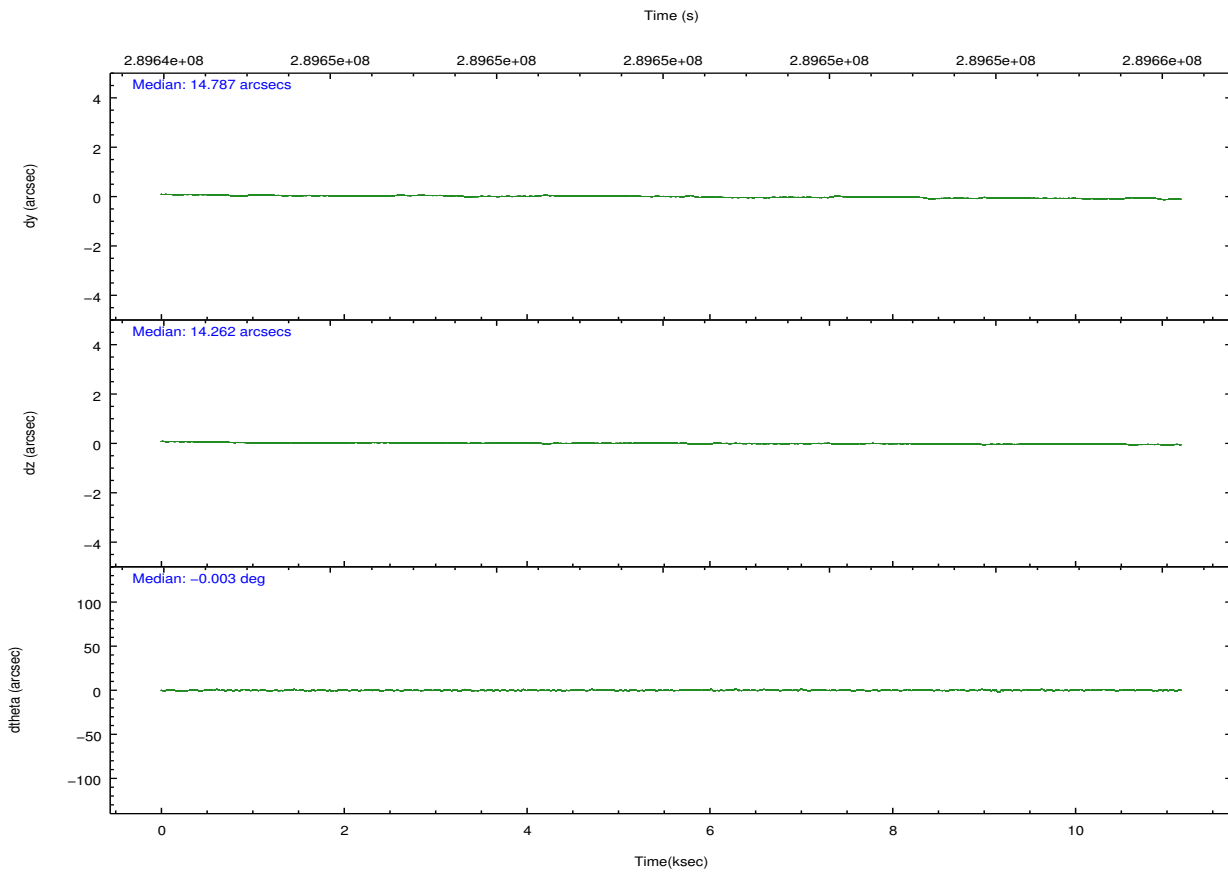
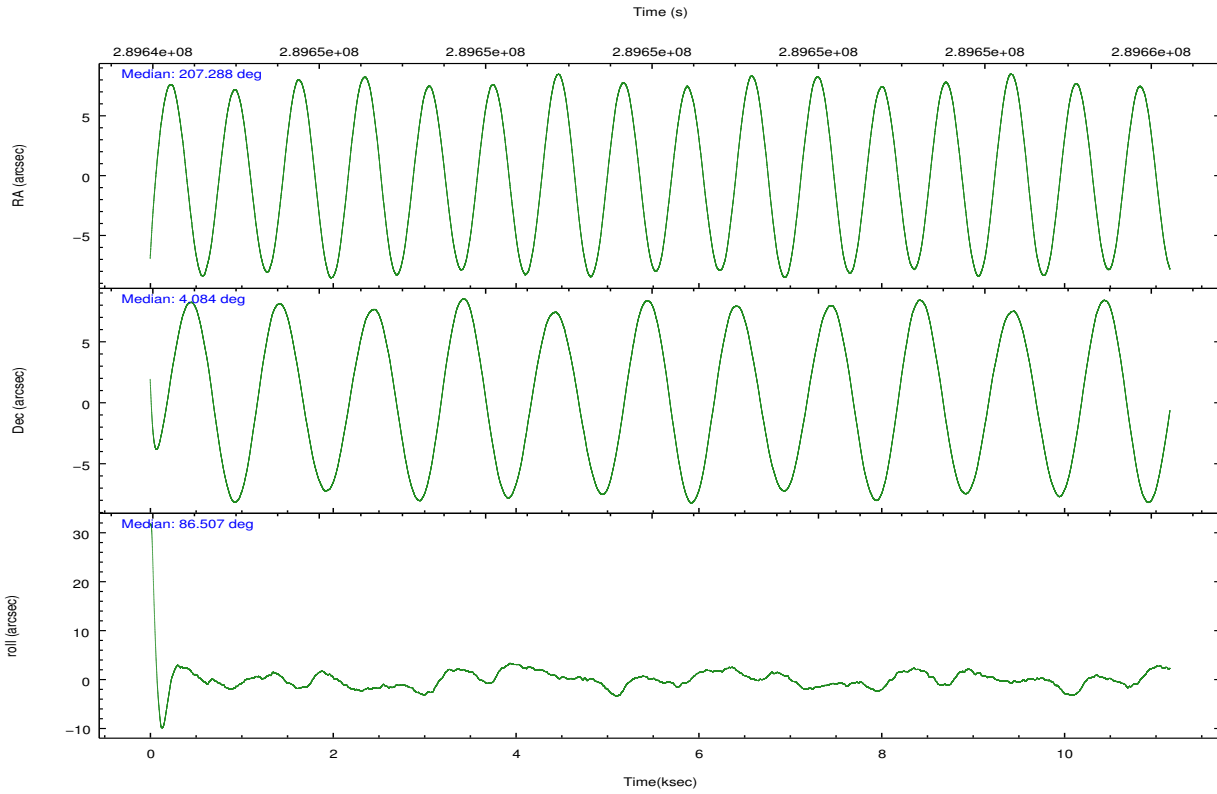
| | ccd 2 | ccd 3 | ccd 6 | ccd 7 | ccd 8 |
|----------------|-------|-------|-------|-------|--------|
| grade 0 events | 5220 | 5739 | 5031 | 5453 | 10192 |
| | 4% | 5% | 4% | 3% | 7% |
| grade 1 events | 73 | 76 | 68 | 138 | 99 |
| | 0% | 0% | 0% | 0% | 0% |
| grade 2 events | 2662 | 2541 | 2857 | 12454 | 6689 |
| | 2% | 2% | 2% | 8% | 4% |
| grade 3 events | 1225 | 1236 | 1309 | 5336 | 3329 |
| | 1% | 1% | 1% | 3% | 2% |
| grade 4 events | 1233 | 1201 | 1223 | 5381 | 3115 |
| | 1% | 1% | 1% | 3% | 2% |
| grade 5 events | 4284 | 5033 | 5235 | 14108 | 7031 |
| | 4% | 4% | 4% | 9% | 4% |
| grade 6 events | 2166 | 2382 | 2773 | 33497 | 7844 |
| | 2% | 2% | 2% | 22% | 5% |
| grade 7 events | 89307 | 88916 | 92770 | 73475 | 103905 |
| | 84% | 83% | 83% | 49% | 73% |

2.2 Compared Parameters

| Parameter | Planned | Actual | Parameter | Planned | Actual |
|-----------------------------------|---------------------|----------------------|---------------------------------------|-----------|---------|
| Instrument | ACIS | ACIS | Obspar format version number | 7 | 7 |
| Detector | ACIS-23678 | ACIS-23678 | Obspar file type | PREDICTED | ACTUAL |
| Grating | NONE | NONE | Obspar update status | NONE | UPDATED |
| Data mode | VFAINT | VFAINT | CCD I0 on | N | N |
| Observation mode | POINTING | POINTING | CCD I1 on | N | N |
| [deg] Pointing RA | 207.300354 | 207.2877949341111 | CCD I2 on | O1 | Y |
| [deg] Pointing Dec | 4.060079 | 4.084361032291655 | CCD I3 on | O2 | Y |
| [deg] Pointing Roll | 86.361750 | 86.51931924290069 | CCD S0 on | N | N |
| [mm] SIM focus pos | -0.684267 | -0.6828225247311905 | CCD S1 on | N | N |
| [mm] SIM defocus | 0 | 0.001444936568705701 | CCD S2 on | O4 | Y |
| [mm] SIM translation stage pos | -190.132523 | -190.1400660498719 | CCD S3 on | Y | Y |
| [mm] SIM translation stage offset | 0 | 0.00754346686406393 | CCD S4 on | O3 | Y |
| [s] Observation start time (MET) | 289644665.184000 | 289643349.38553 | CCD S5 on | N | N |
| Observation start date | 2007-03-07T08:50:00 | 2007-03-07T08:29:09 | Number of optional ACIS chips dropped | 0 | 0 |
| [s] Observation end time (MET) | 289655665.184000 | 289656048.62364 | On-chip summing requested | N | N |
| Observation end date | 2007-03-07T11:53:20 | 2007-03-07T12:00:48 | Subarray requested | NONE | NONE |
| Read mode | TIMED | TIMED | Alternating exposures requested | N | N |
| | | | [s] Primary exposure time | 0.000000 | 3.1 |

2.3 Aspect



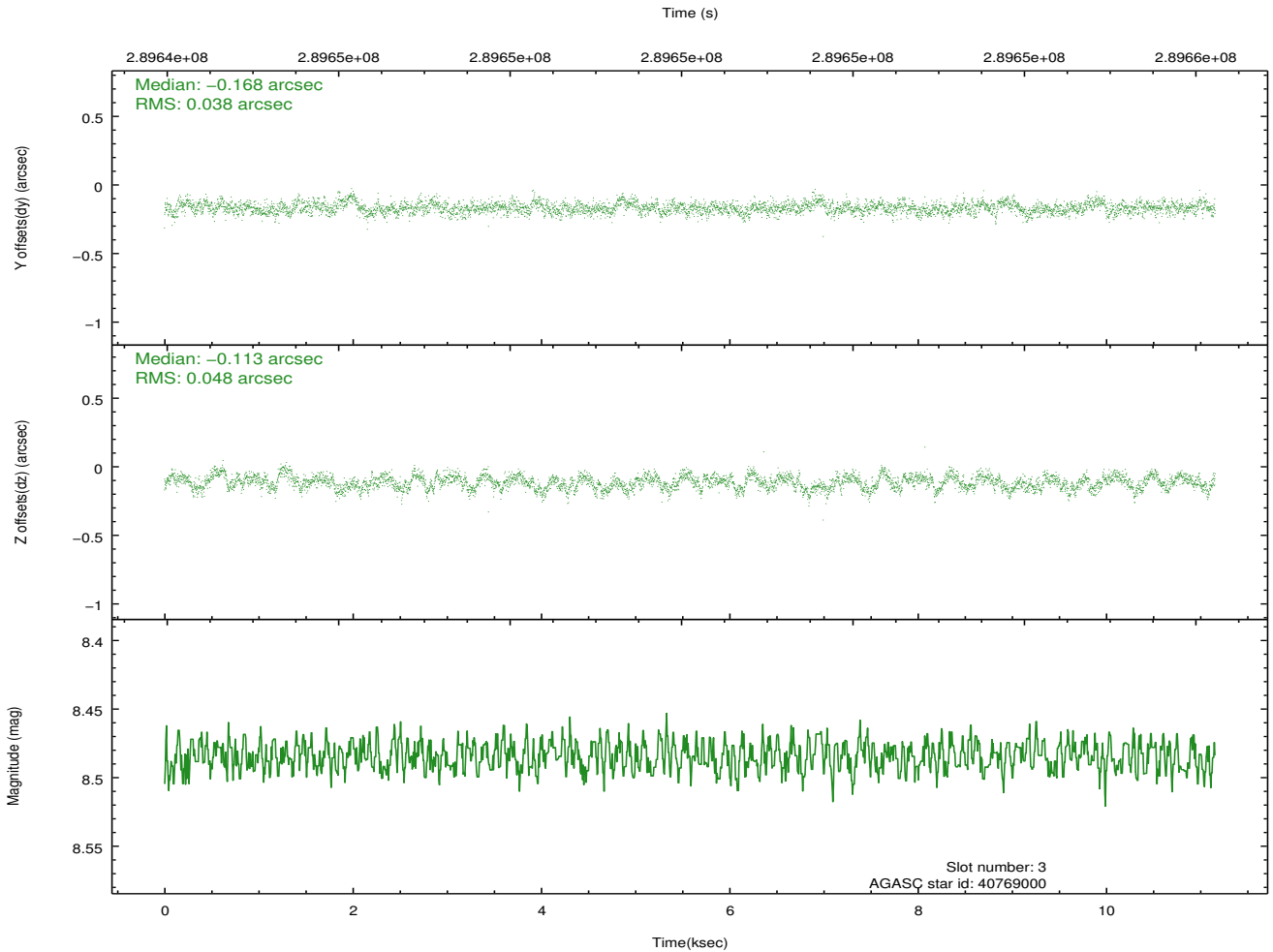
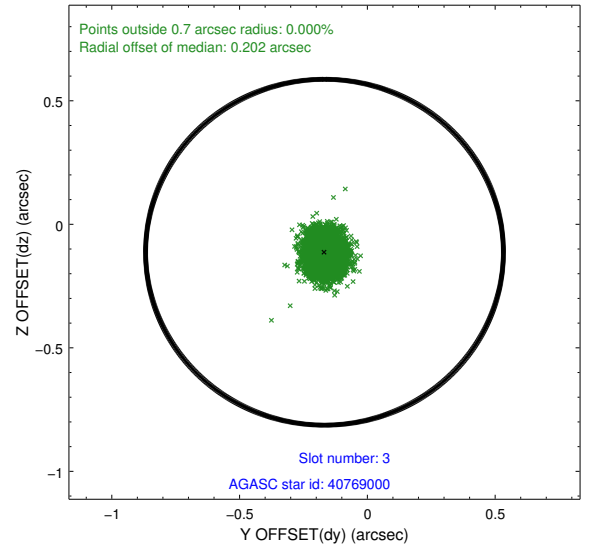
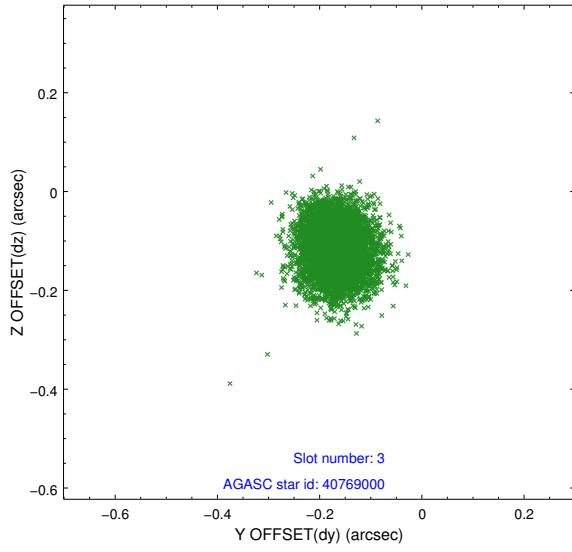


Slot Statistics

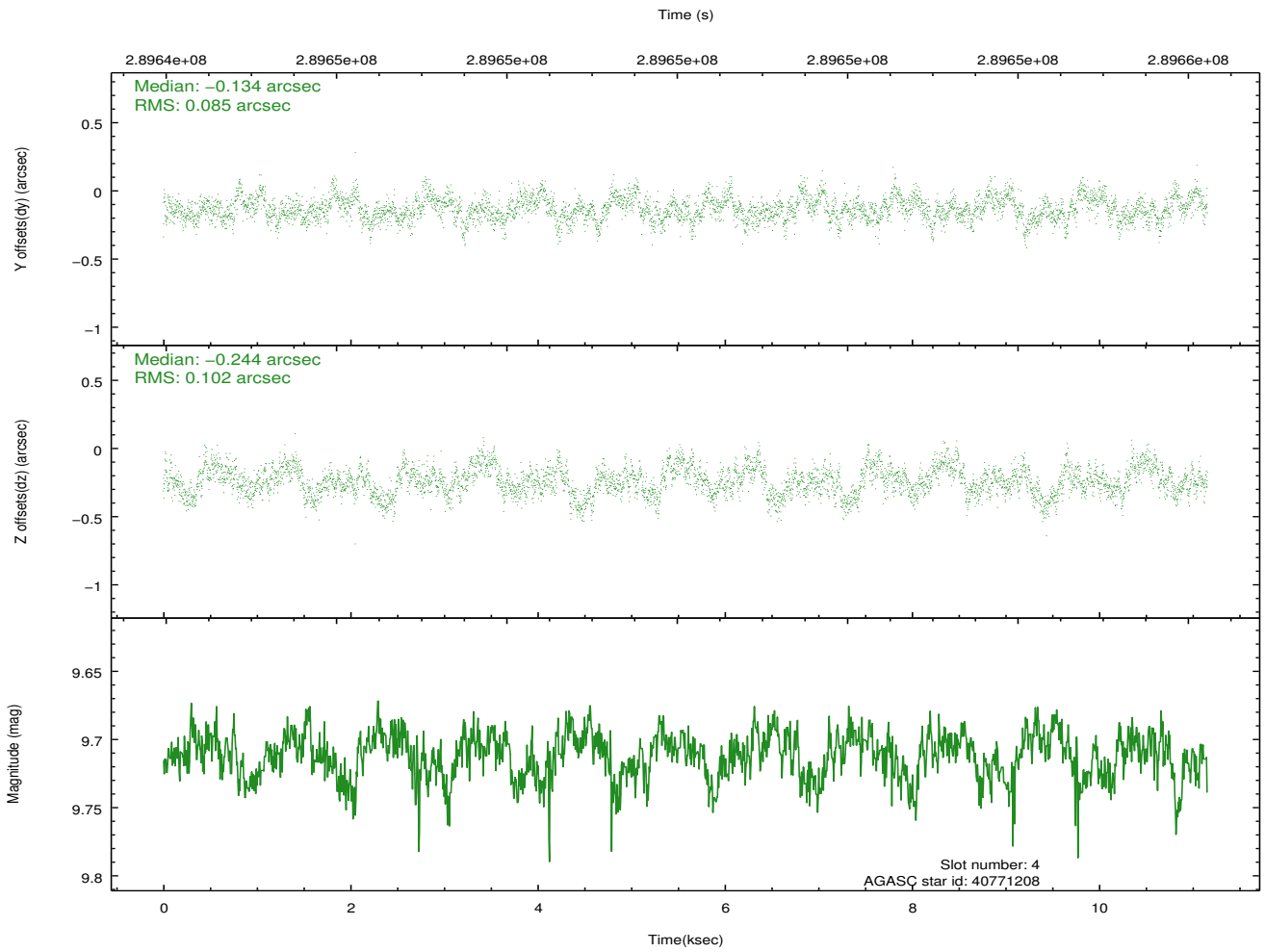
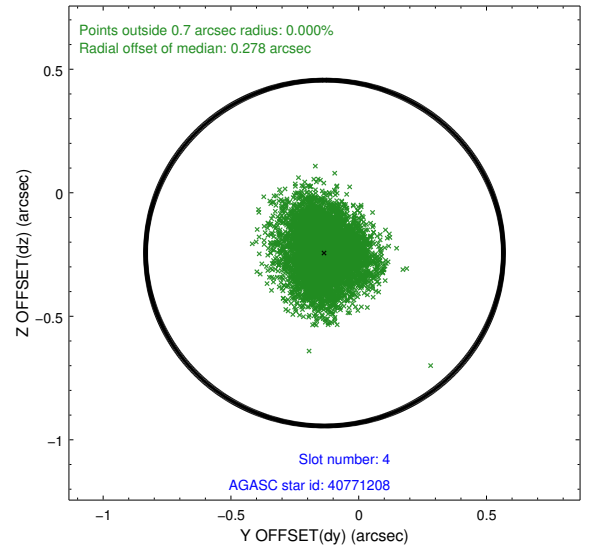
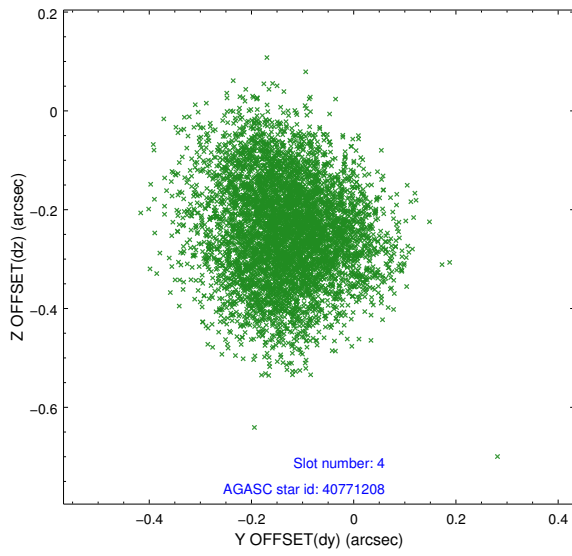
| slot | status | id | mag | n_pts | med_dy | med_dz | dr1 | dr2 | ra | dec | mean_y | mean_z |
|------|--------|----------|-------|-------|--------|--------|-------|-------|------------|----------|----------|----------|
| 0 | FID | ACIS-S-2 | 7.10 | 2719 | -0.144 | -0.099 | 0.005 | 0.010 | 0.000000 | 0.000000 | -767.91 | -1735.71 |
| 1 | FID | ACIS-S-4 | 7.20 | 2721 | 0.154 | 0.076 | 0.006 | 0.010 | 0.000000 | 0.000000 | 2145.48 | 172.43 |
| 2 | FID | ACIS-S-6 | 7.34 | 2721 | -0.038 | 0.031 | 0.006 | 0.011 | 0.000000 | 0.000000 | 394.80 | 810.33 |
| 3 | GUIDE | 40769000 | 8.48 | 5439 | -0.168 | -0.113 | 0.065 | 0.104 | 206.979089 | 3.846426 | -840.63 | 1102.95 |
| 4 | GUIDE | 40771208 | 9.71 | 5434 | -0.134 | -0.244 | 0.143 | 0.225 | 206.763065 | 4.328284 | 840.97 | 1987.30 |
| 5 | GUIDE | 40900840 | 9.08 | 5441 | 0.059 | 0.136 | 0.102 | 0.161 | 207.724953 | 3.555529 | -1714.70 | -1637.14 |
| 6 | GUIDE | 40902392 | 10.28 | 5434 | 0.324 | 0.275 | 0.211 | 0.351 | 207.650650 | 3.624075 | -1485.75 | -1355.65 |
| 7 | GUIDE | 40902576 | 10.18 | 5432 | -0.073 | -0.052 | 0.226 | 0.381 | 207.878541 | 4.186610 | 587.18 | -2042.78 |

2.4 Star Slots

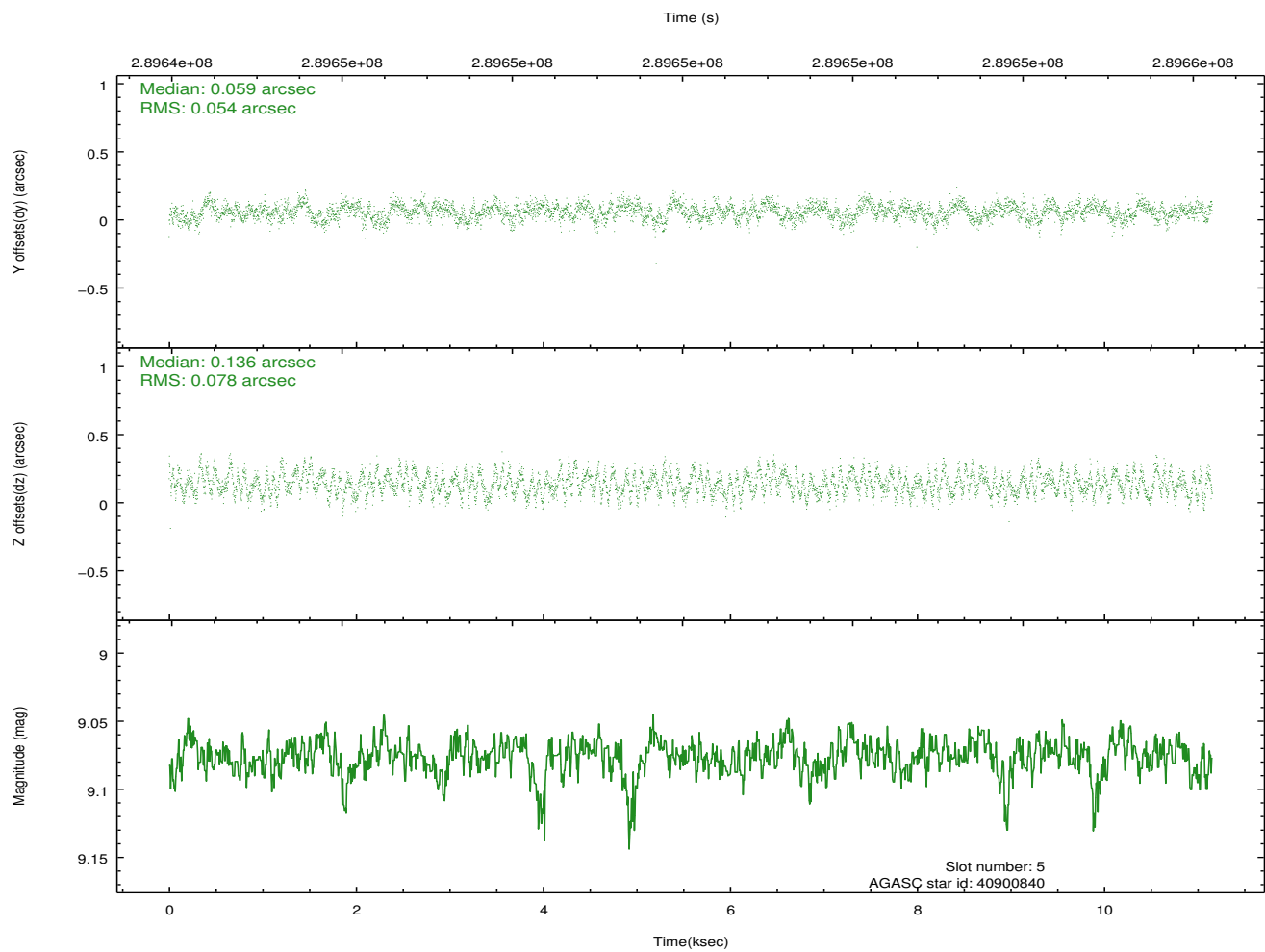
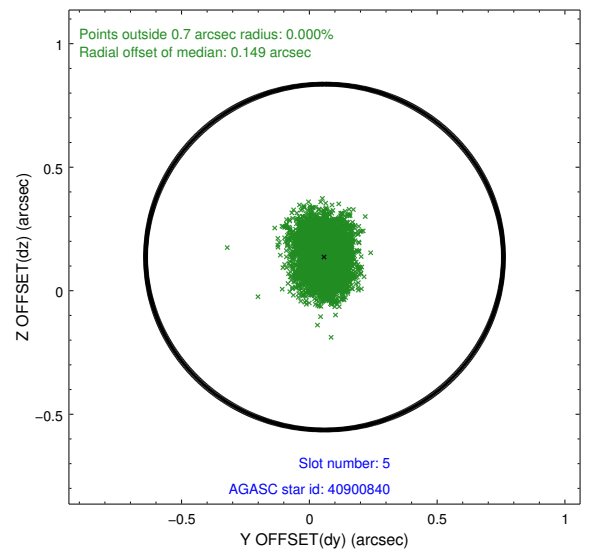
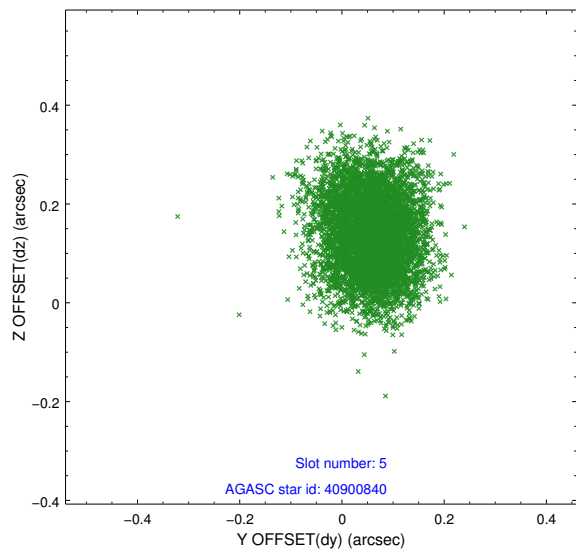
2.4.1 Slot 3



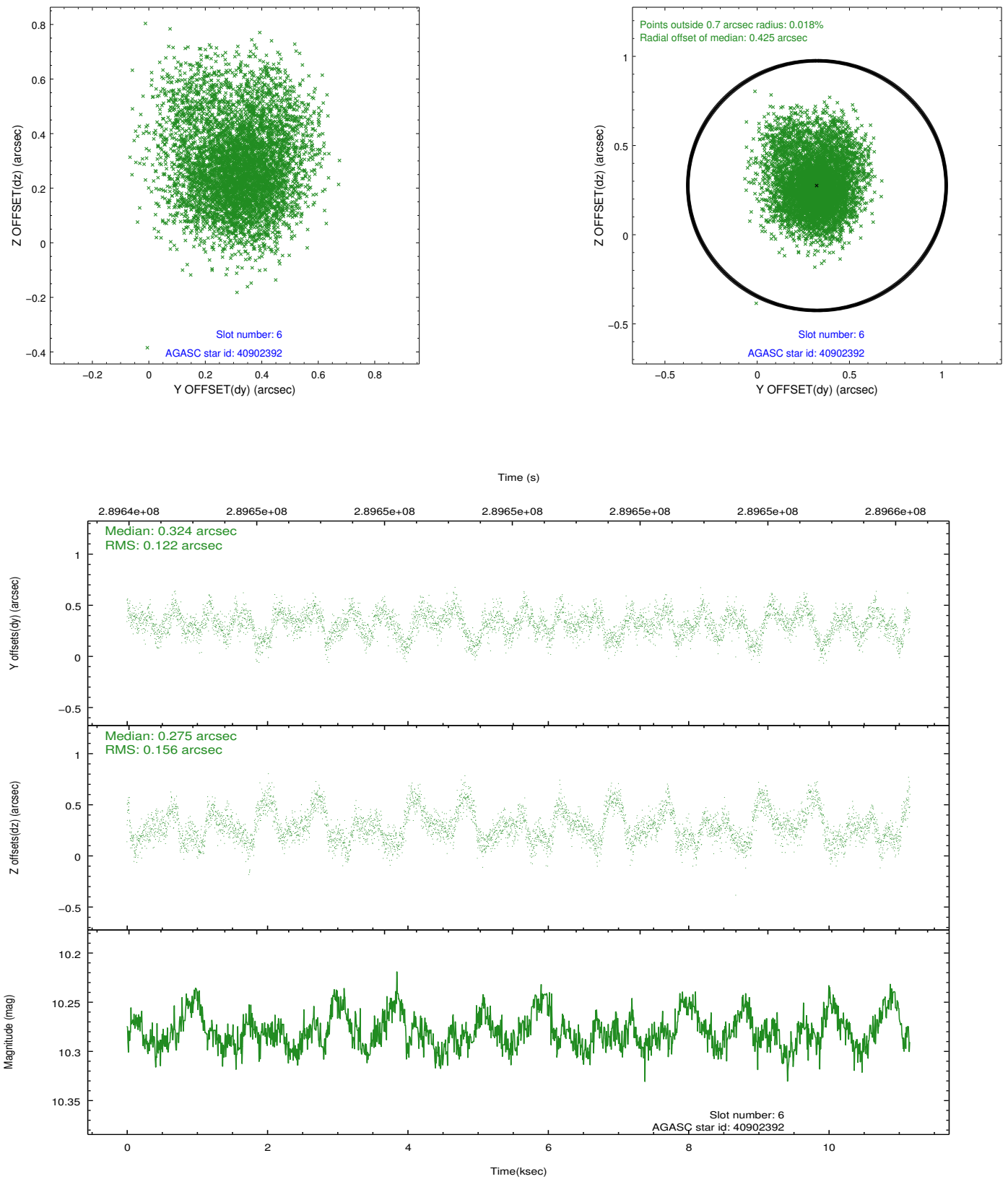
2.4.2 Slot 4



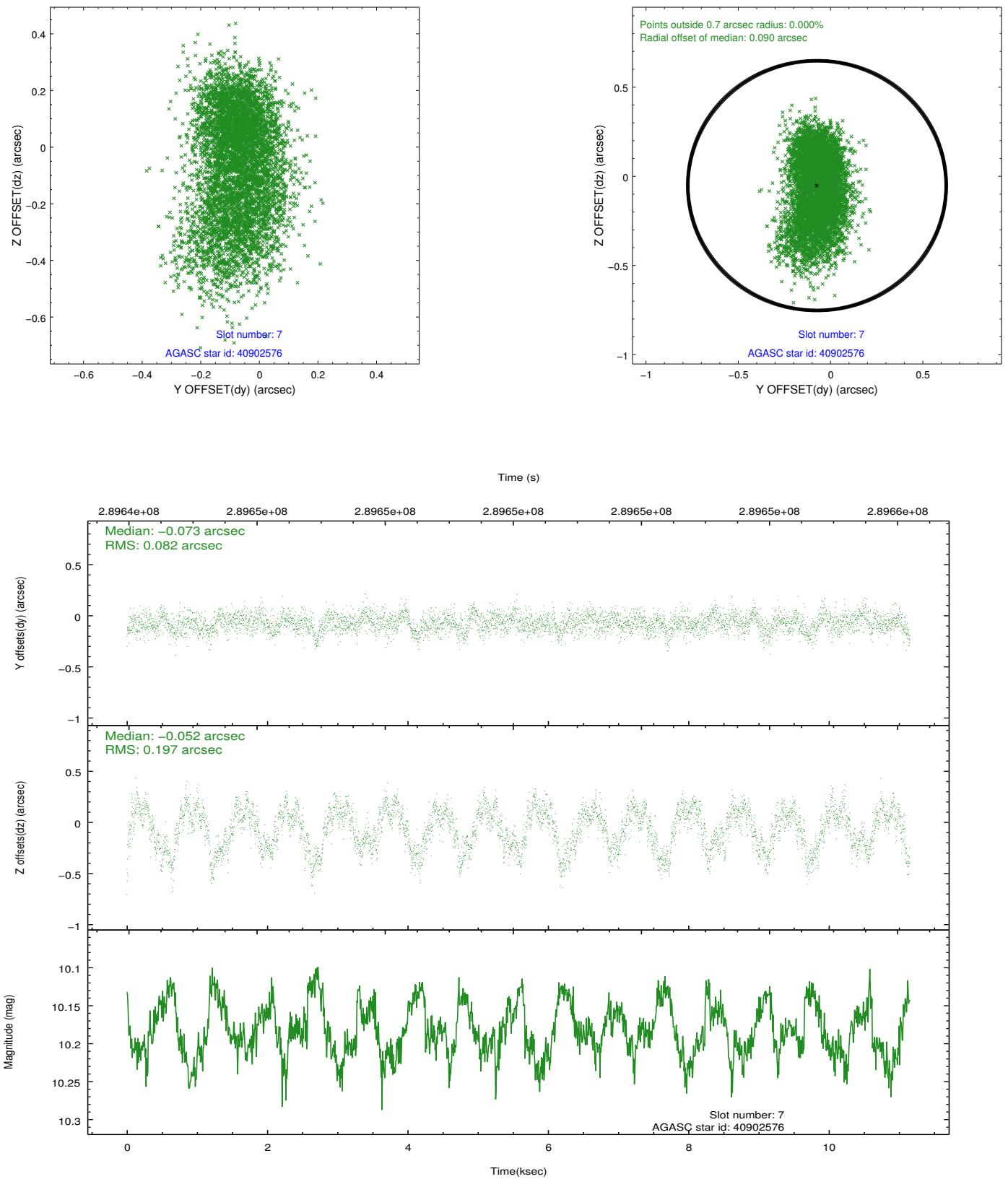
2.4.3 Slot 5



2.4.4 Slot 6

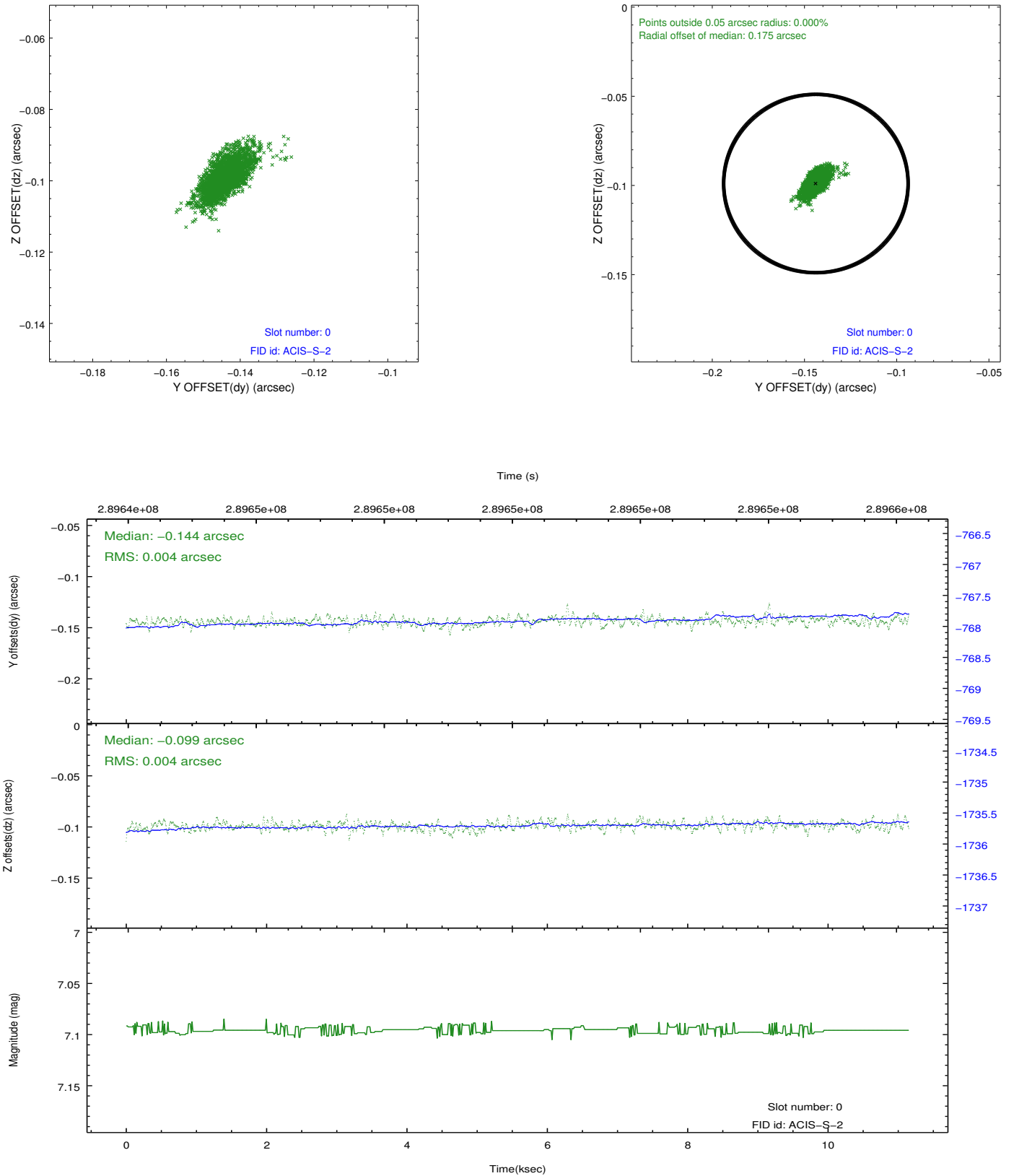


2.4.5 Slot 7

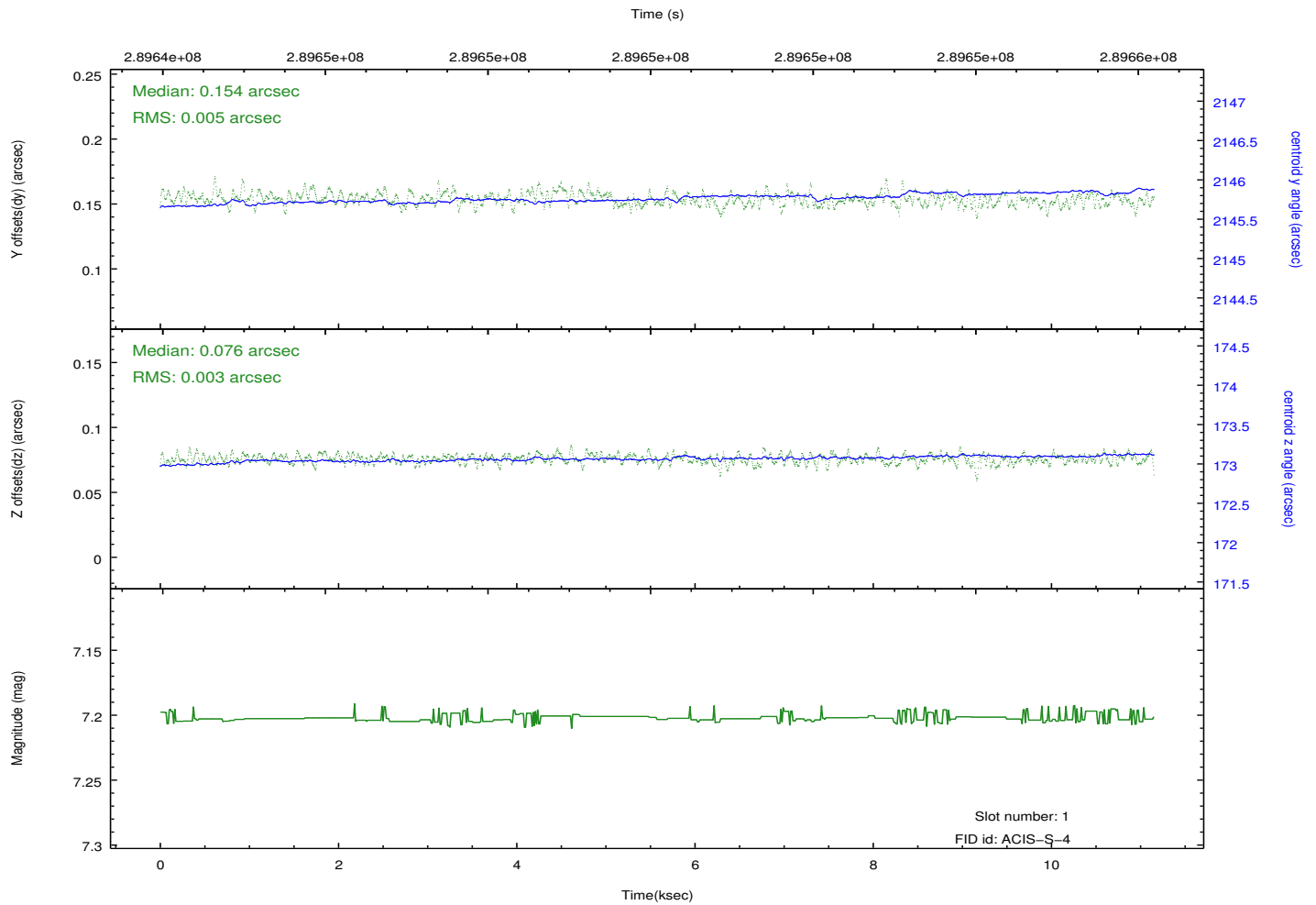
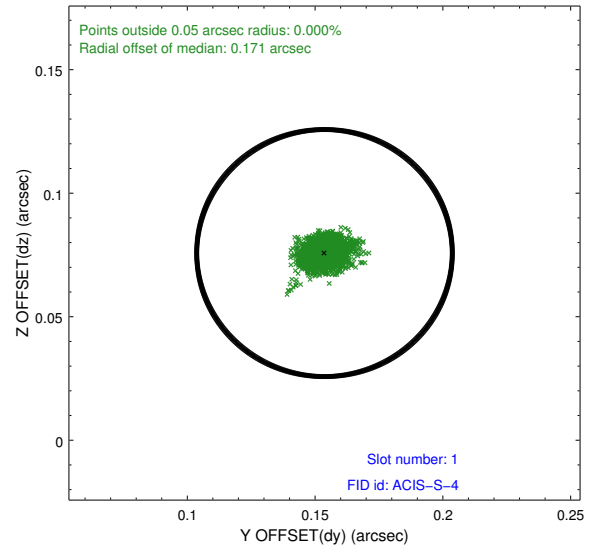
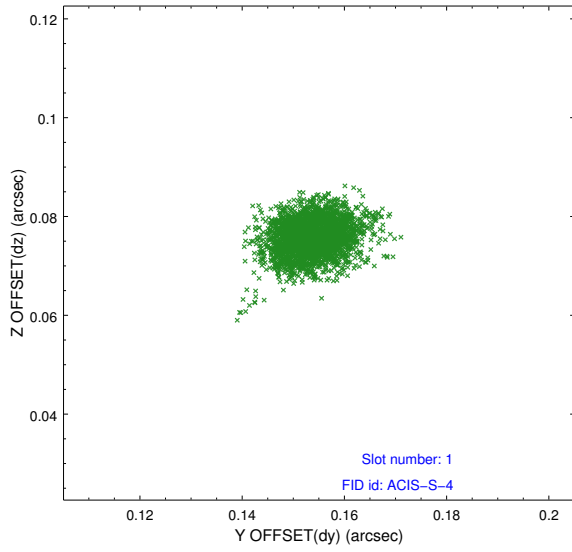


2.5 FID Slots

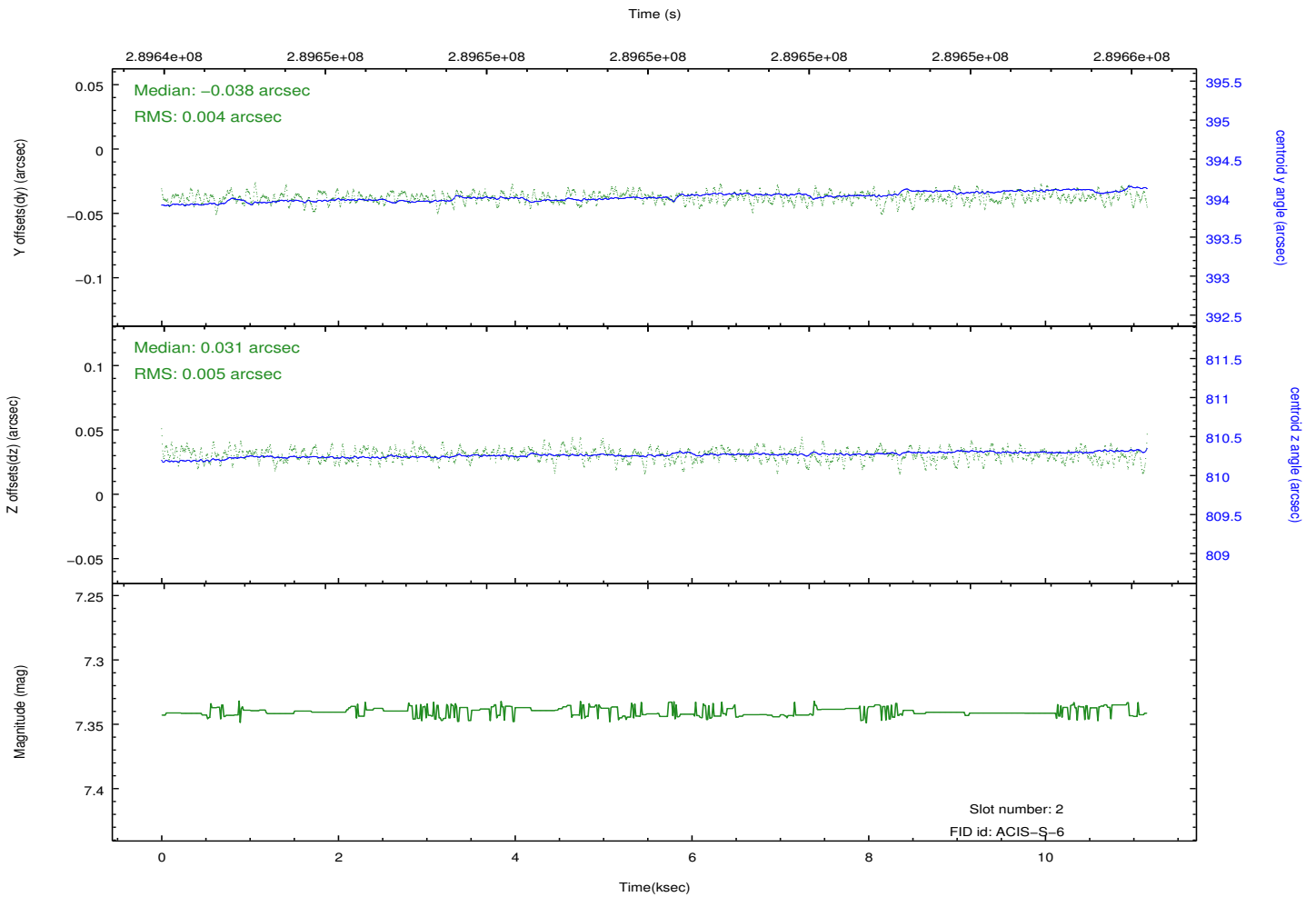
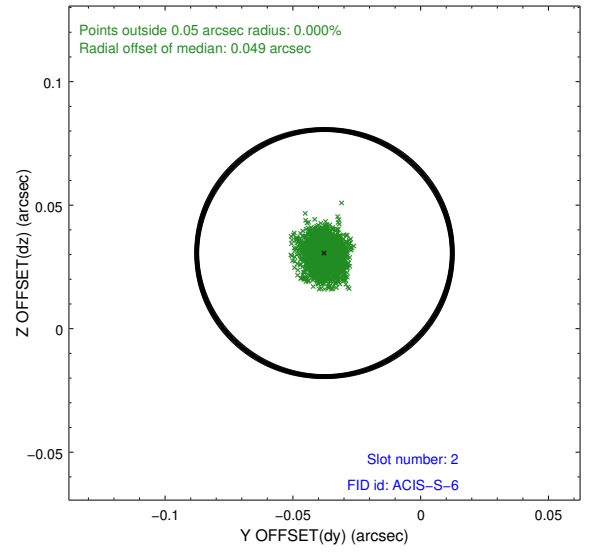
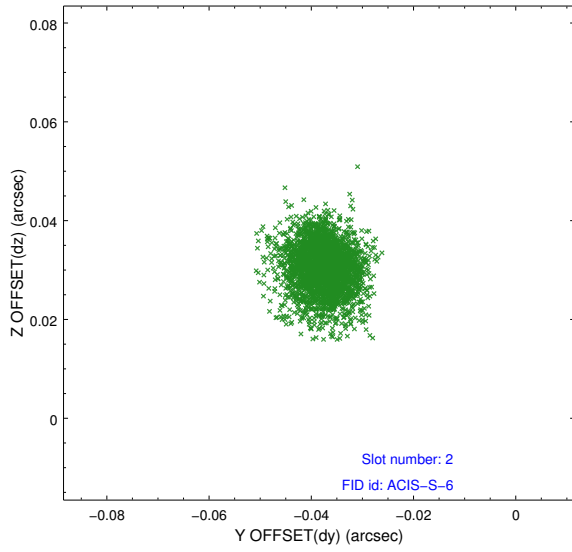
2.5.1 Slot 0



2.5.2 Slot 1



2.5.3 Slot 2



A Summary

A.1 Status

| | |
|----------------------------|---------------|
| V&V Scientist | Beth Sundheim |
| V&V Date (YYYY-MM-DD) | 2012.04.22 |
| V&V Edition | 1 |
| V&V Disposition and Status | OK |
| V&V Charge Time | 11.1507 |

A.2 Comments

Joint proposal with NRAO.