

# V&V Reference Report

## L2 ASCDS Version : 8.4.4

Observation 8373 - L2 Version 4  
Chandra X-Ray Center

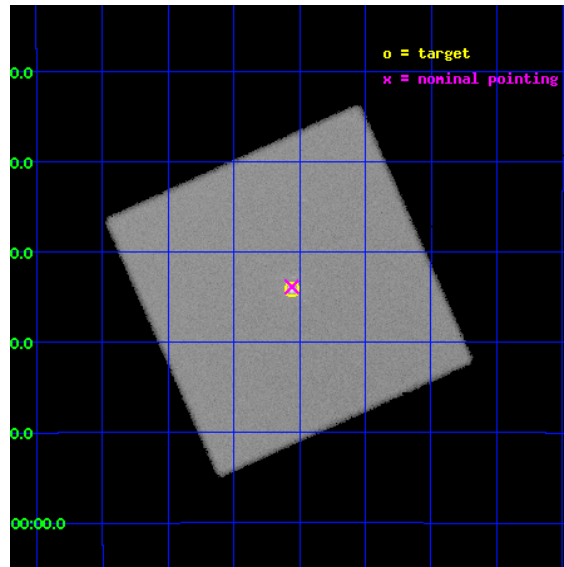
L2 Processing Date : Aug 11 2012

## Contents

<b>1</b>	<b>Front</b>	<b>2</b>
<b>2</b>	<b>OBI</b>	<b>3</b>
2.1	OBI . . . . .	3
2.1.1	Images . . . . .	3
2.1.2	Parameters . . . . .	4
2.1.3	Events . . . . .	4
2.2	Compared Parameters . . . . .	5
2.3	Aspect . . . . .	6
2.4	Star Slots . . . . .	9
2.4.1	Slot 3 . . . . .	9
2.4.2	Slot 4 . . . . .	10
2.4.3	Slot 5 . . . . .	11
2.4.4	Slot 6 . . . . .	12
2.4.5	Slot 7 . . . . .	13
2.5	FID Slots . . . . .	14
2.5.1	Slot 0 . . . . .	14
2.5.2	Slot 1 . . . . .	15
2.5.3	Slot 2 . . . . .	16
<b>A</b>	<b>Summary</b>	<b>17</b>
A.1	Status . . . . .	17
A.2	Comments . . . . .	17

# 1 Front

seq_num	590466	Sequence number
obs_id	8373	Observation id
title	AO8 Observations of the Standard Candles Cas A and G21.5-09	Propos
observer	Dr. CXC Calibration	Principal investigator
object	G21.5-09	Source name
ra_targ	278.389583	Observer's specified target RA [deg]
dec_targ	-10.568528	Observer's specified target Dec [deg]
ra_nom	278.38957554004	Nominal RA [deg]
dec_nom	-10.564284240696	Nominal Dec [deg]
roll_nom	110.85442818564	Nominal Roll [deg]
revision	4	Processing version of data
ontime	20181.482214153	[s]
livetime	19985.749972225	Ontime multiplied by DTCOR
l2events	1120862	Number of level 2 events

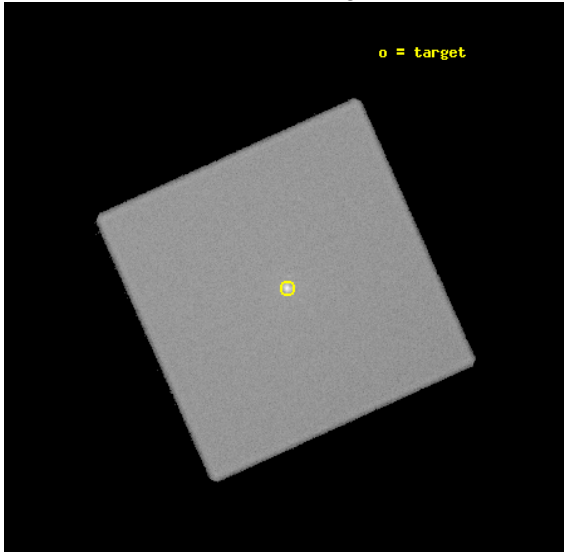


## 2 OBI

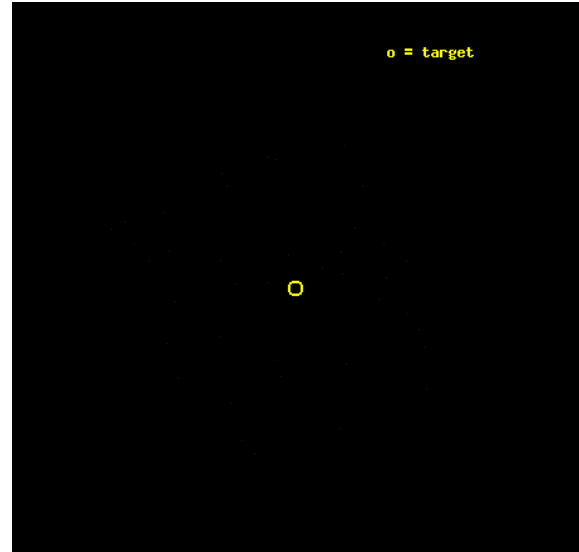
### 2.1 OBI

#### 2.1.1 Images

Level 1 Image



Level 1 Bad Events



### 2.1.2 Parameters

obi_num	0	Obi number	sched_exp_time	20000.000000	[s] Scheduled observation exposure time
ascdsver	8.4.5	Processing system revision	ontime	20181.482214153	[s]
caldbver	4.5.1.1	&#160	l1events	1673068	Number of level 1 events
date	2012-08-11T21:32:03	Date and time of file creation			
revision	4	Processing version of data			

### 2.1.3 Events

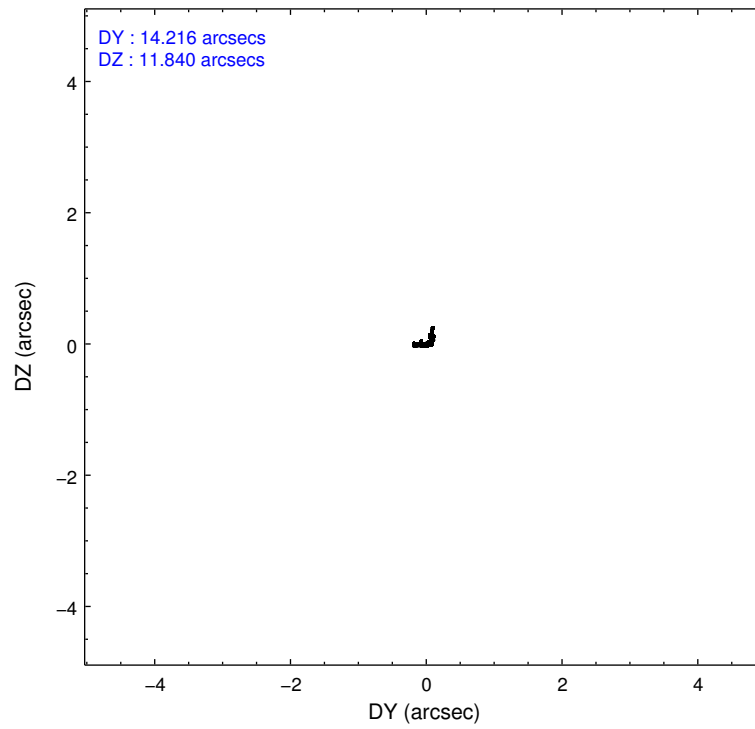
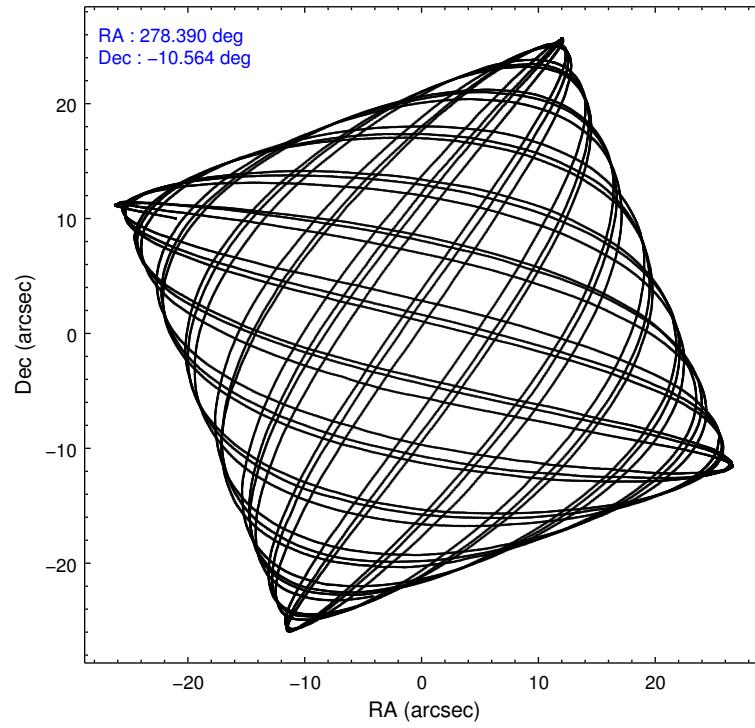
#### Level 1 Events

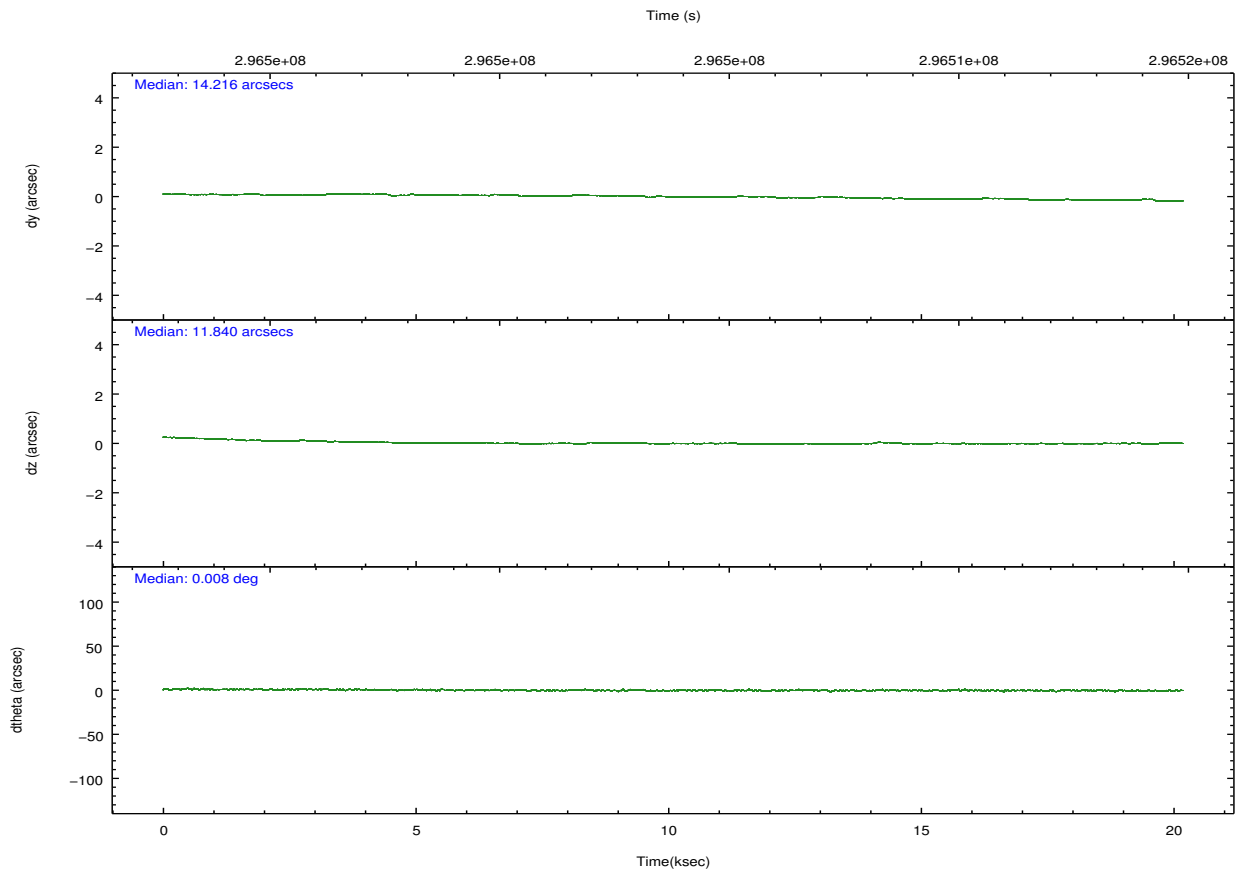
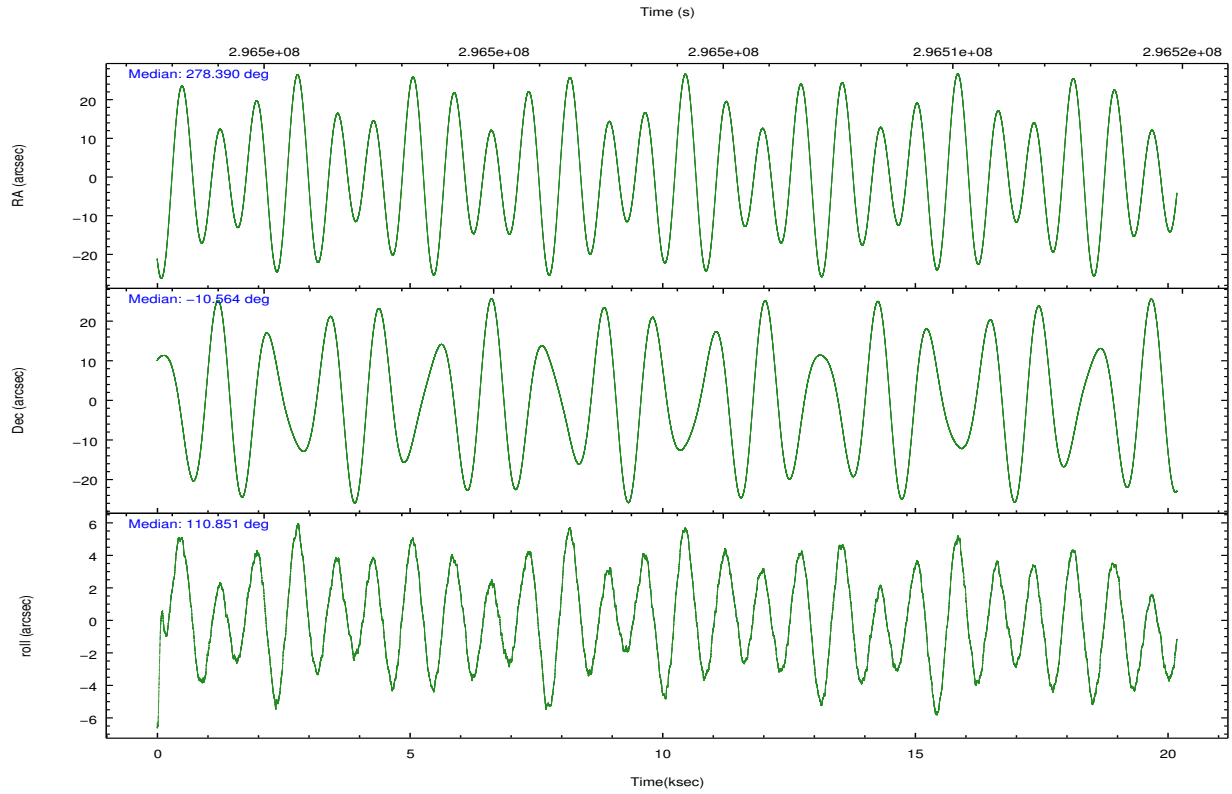
	<b>segment 0</b>
level 1 events	1673068
rejected events	13341
rejected %	0%

## 2.2 Compared Parameters

Parameter	Planned	Actual	Parameter	Planned	Actual
Instrument	HRC	HRC	Obspar format version number	7	7
Detector	HRC-I	HRC-I	Obspar file type	PREDICTED	ACTUAL
Grating	NONE	NONE	Obspar update status	NONE	UPDATED
Data mode	OBSERVING	OBSERVING			
Observation mode	POINTING	POINTING			
[deg] Pointing RA	278.411507	278.3895755400357			
[deg] Pointing Dec	-10.580977	-10.56428424069588			
[deg] Pointing Roll	110.953943	110.8544281856422			
[s] Window start time (MET)	286675265.184000	286675265.184000			
[s] Window stop time (MET)	296956865.184000	296956865.184000			
[mm] SIM focus pos	-1.040293	-1.038866356238299			
[mm] SIM defocus	0	0.001426264420575141			
[mm] SIM translation stage pos	126.985494	126.9829799899862			
[mm] SIM translation stage offset	0	0.002508901615314585			
[s] Observation start time (MET)	296493871.184000	296493403.18706			
Observation start date	2007-05-25T15:23:26	2007-05-25T15:16:43			
[s] Observation end time (MET)	296513871.184000	296514008.76305			
Observation end date	2007-05-25T20:56:46	2007-05-25T21:00:08			

## 2.3 Aspect



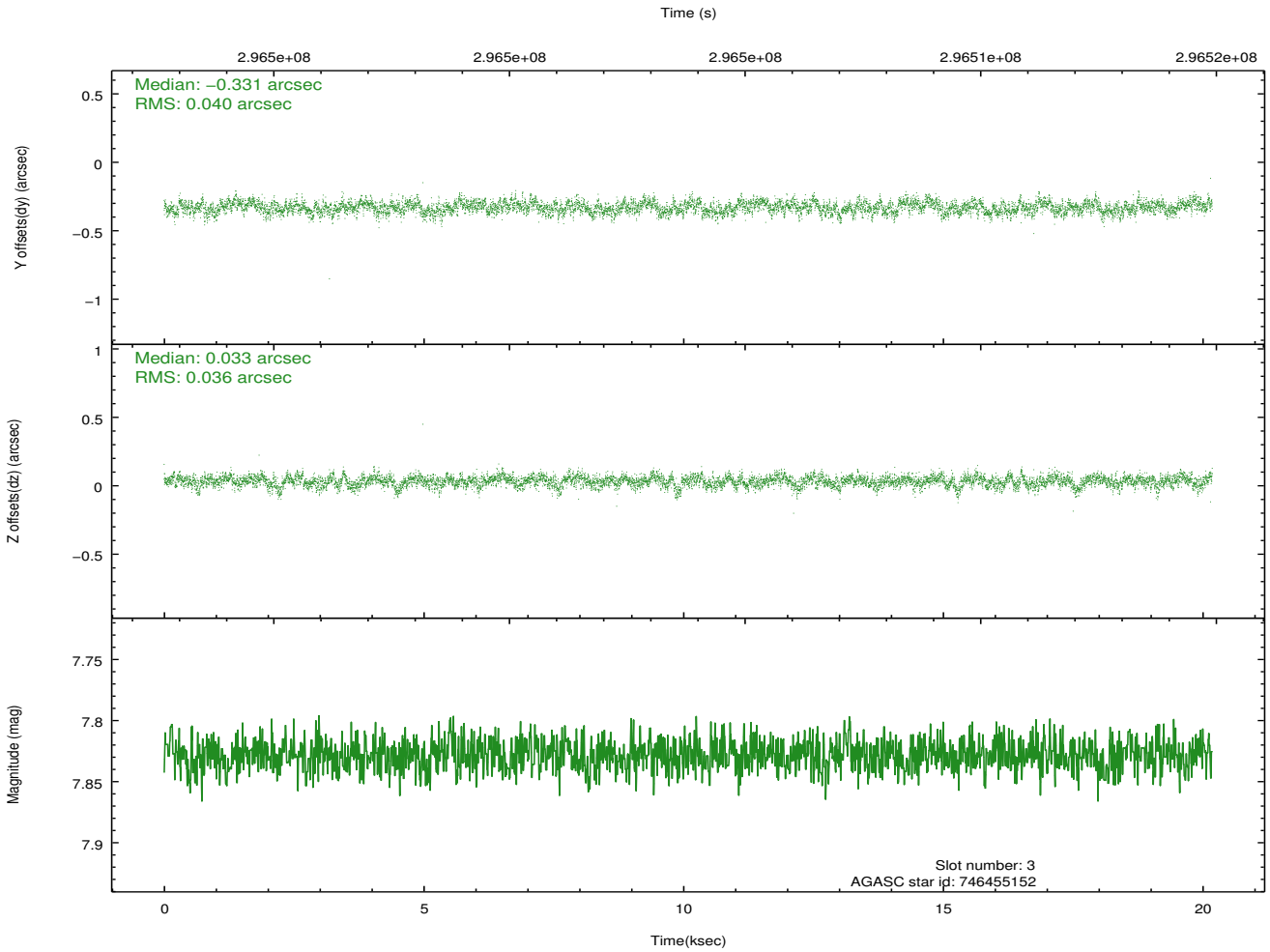
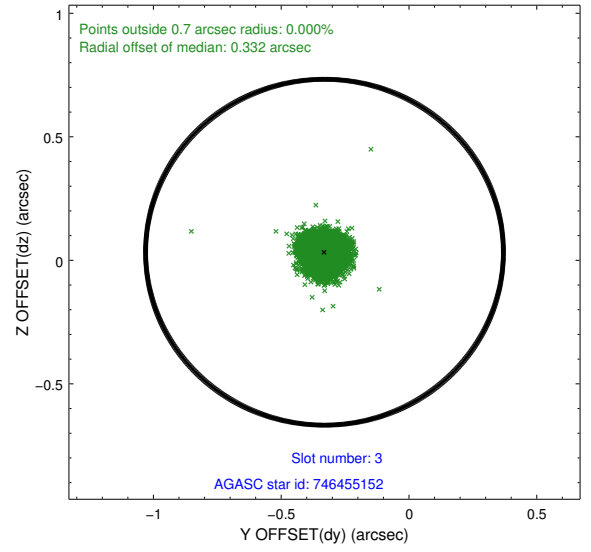
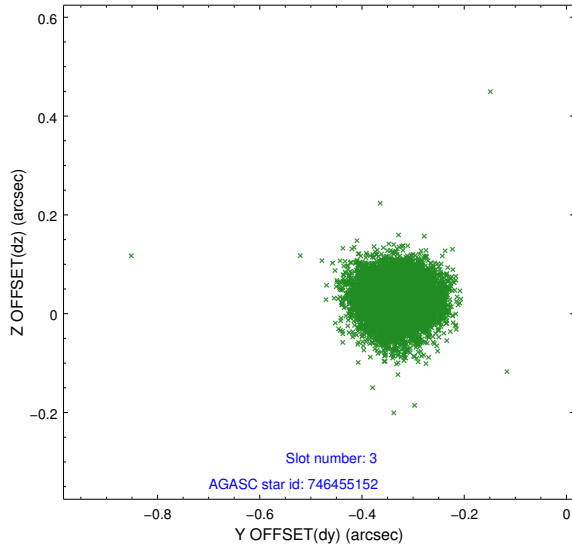


### Slot Statistics

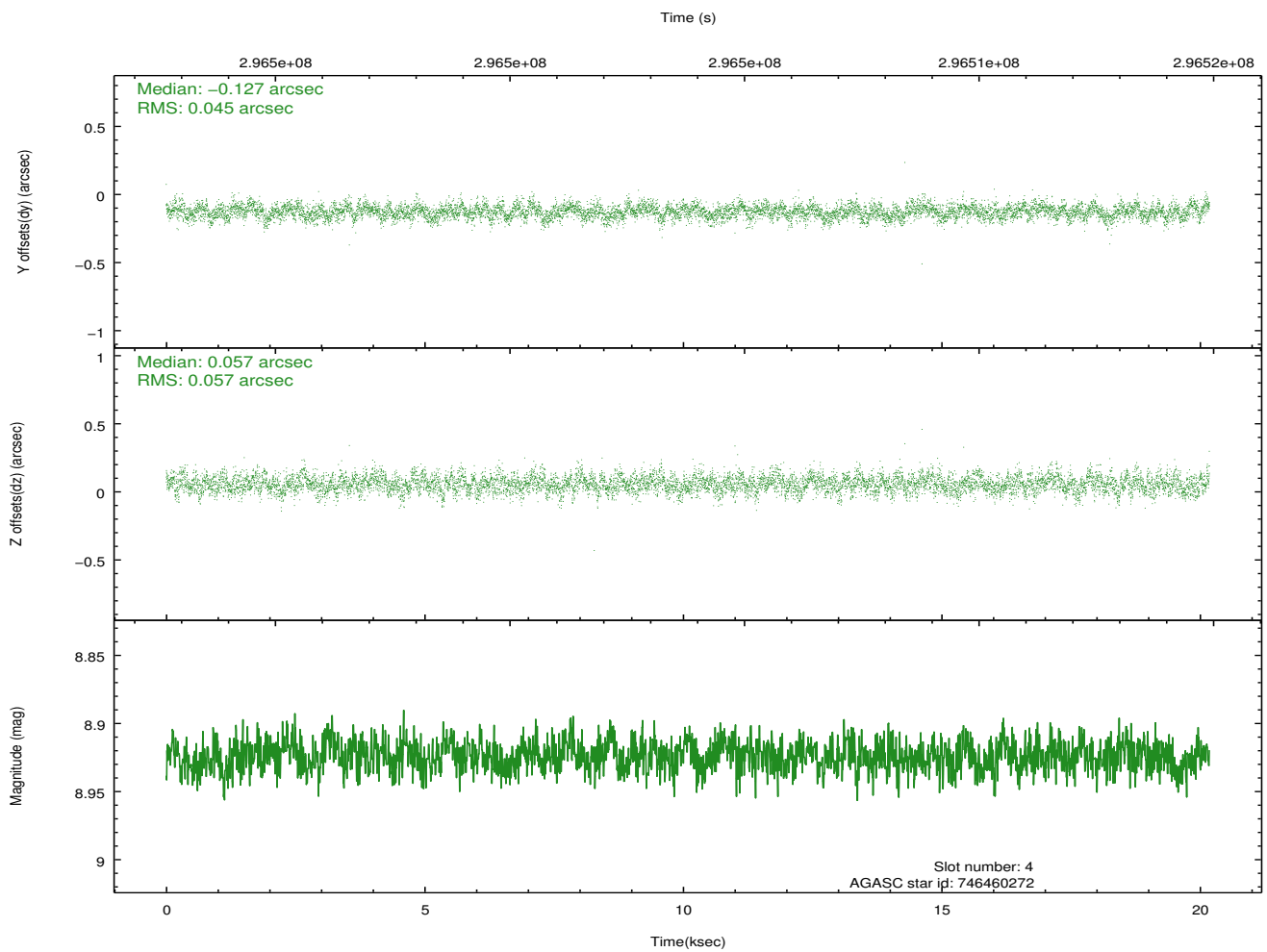
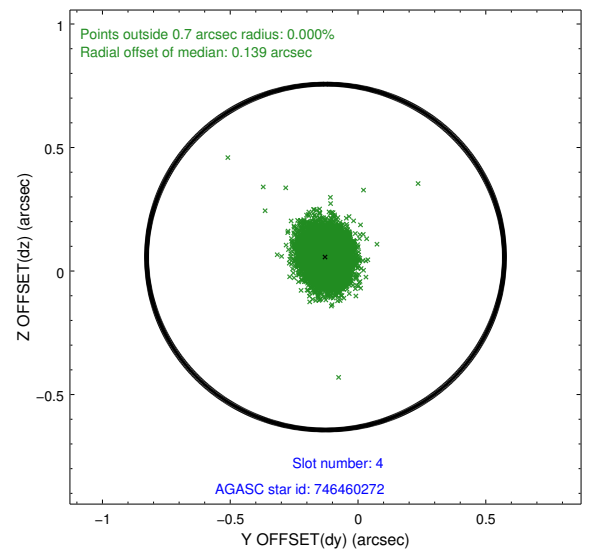
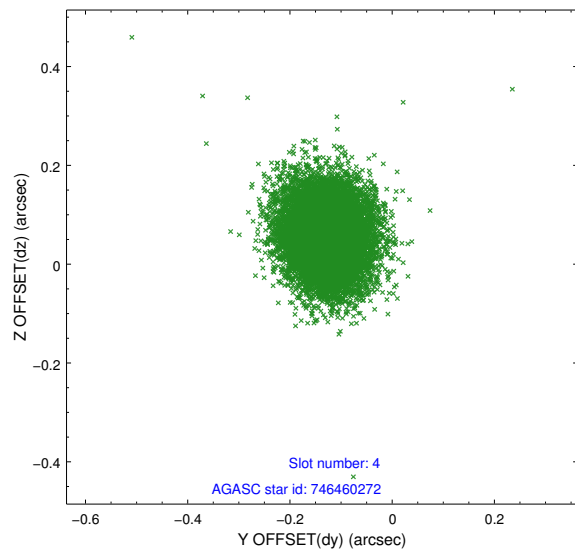
slot	status	id	mag	n_pts	med_dy	med_dz	dr1	dr2	ra	dec	mean_y	mean_z
0	FID	HRC-I-1	6.96	4923	-0.058	0.009	0.006	0.011	0.000000	0.000000	-770.03	-1299.85
1	FID	HRC-I-2	6.99	4923	0.212	-0.123	0.006	0.011	0.000000	0.000000	842.71	-1301.81
2	FID	HRC-I-3	7.04	4923	-0.035	0.024	0.006	0.010	0.000000	0.000000	-1198.35	1004.46
3	GUIDE	746455152	7.83	9838	-0.331	0.033	0.057	0.093	278.447893	-9.976732	1985.33	-898.23
4	GUIDE	746460272	8.92	9835	-0.127	0.057	0.076	0.125	278.847488	-10.152127	888.78	-1994.48
5	GUIDE	746462392	8.53	9842	0.122	-0.008	0.078	0.125	279.038421	-10.890715	-1837.09	-1670.79
6	GUIDE	746462456	8.39	9837	0.174	-0.111	0.083	0.135	278.652171	-10.530173	-134.78	-860.85
7	GUIDE	746462680	9.03	9841	0.165	0.033	0.075	0.123	278.660755	-10.782756	-993.42	-563.32

## 2.4 Star Slots

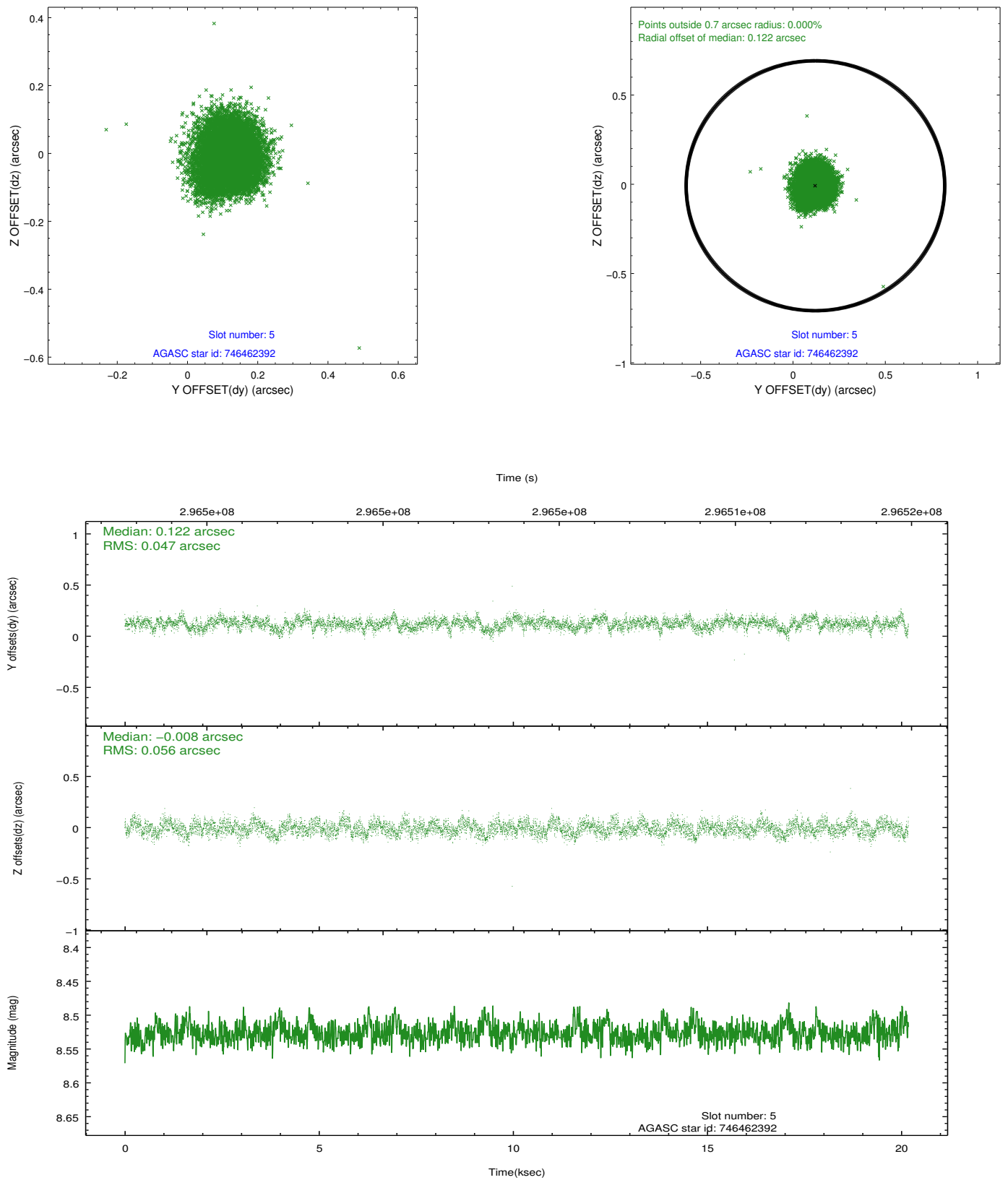
### 2.4.1 Slot 3



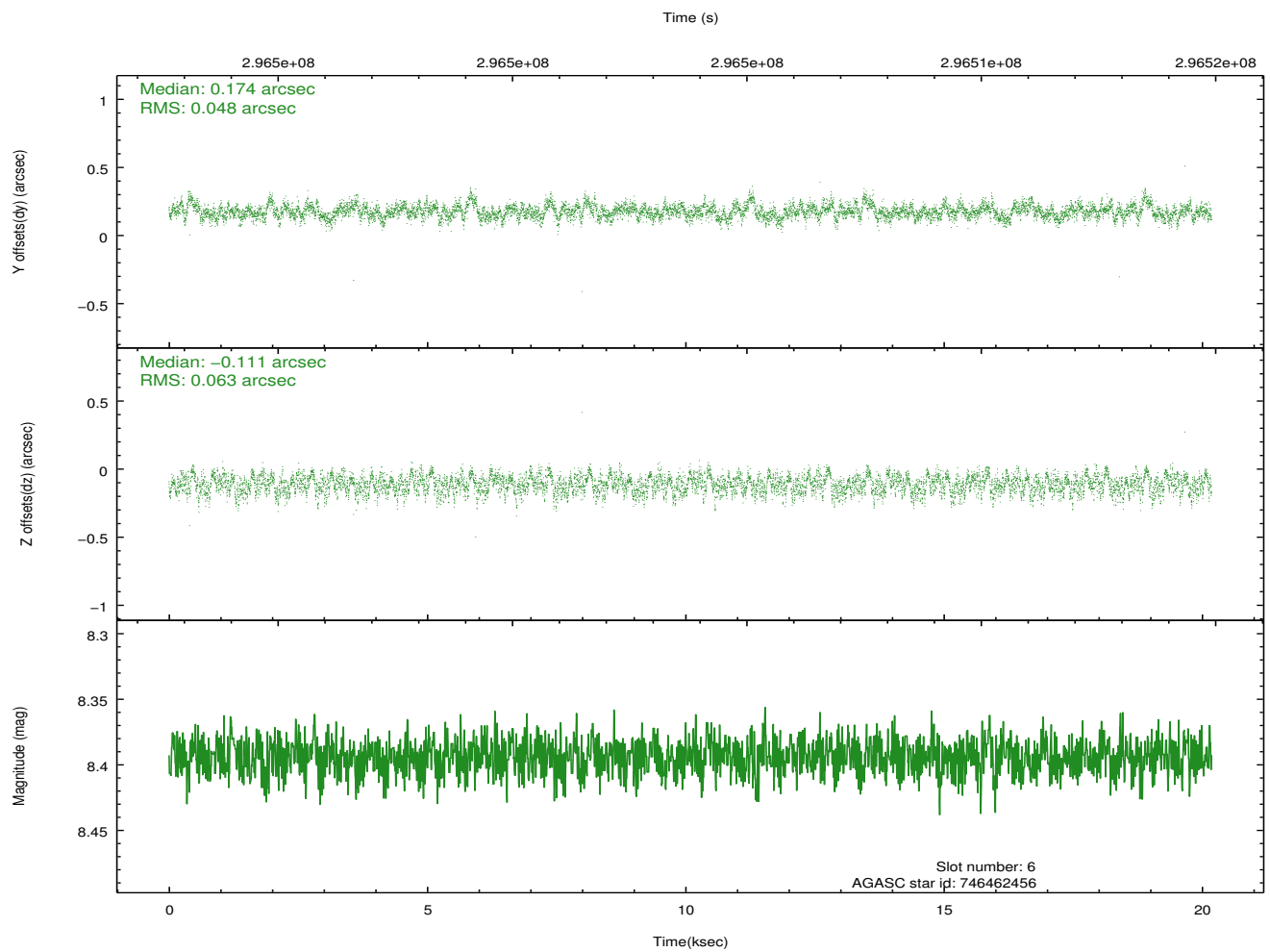
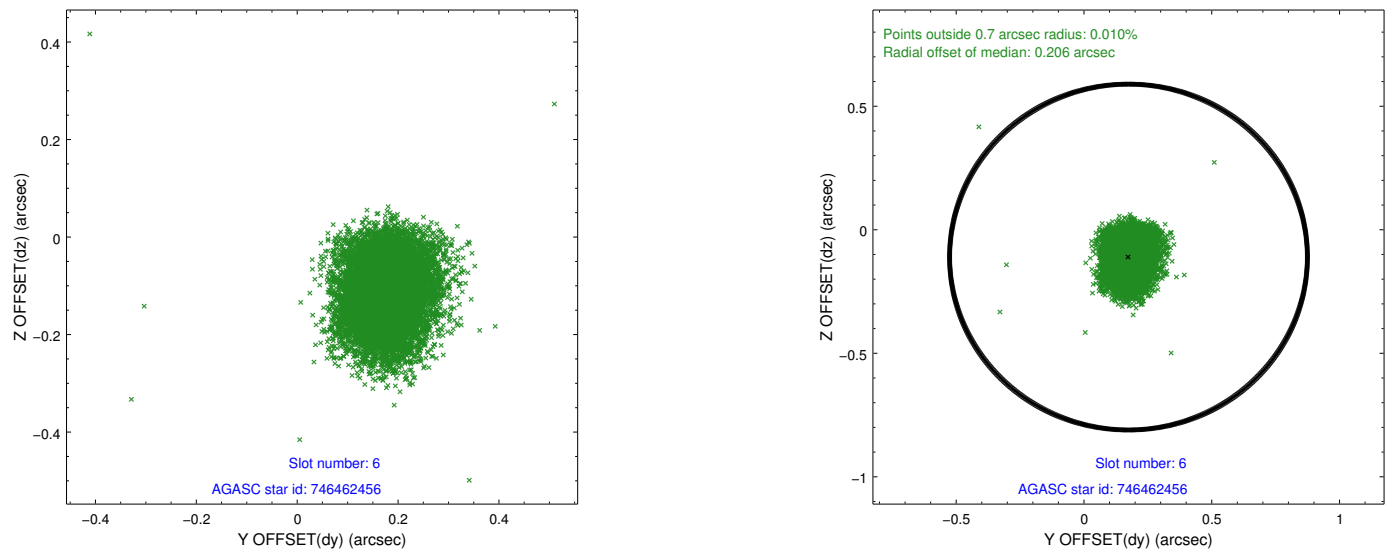
## 2.4.2 Slot 4



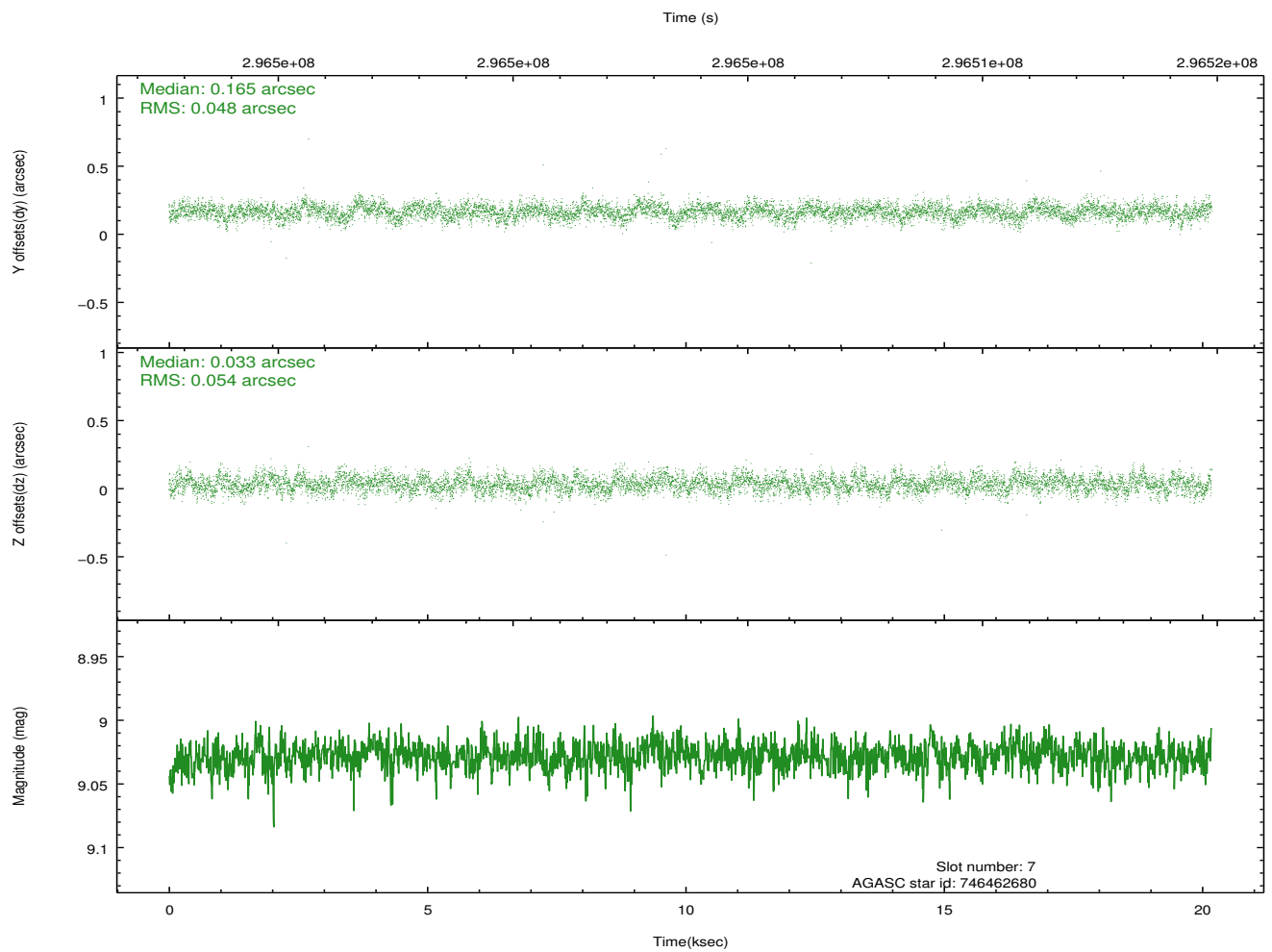
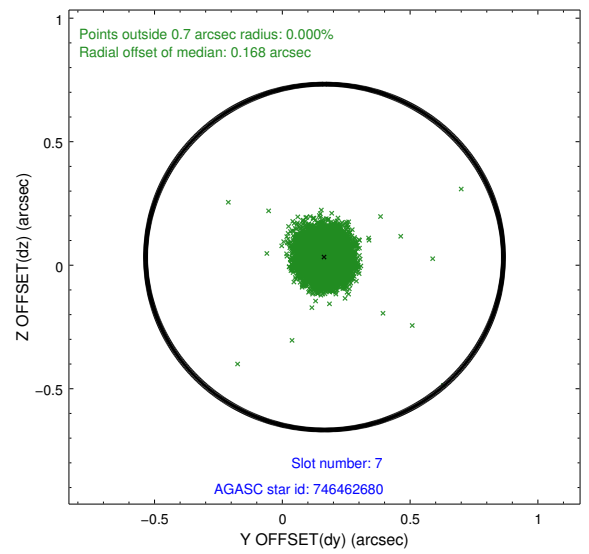
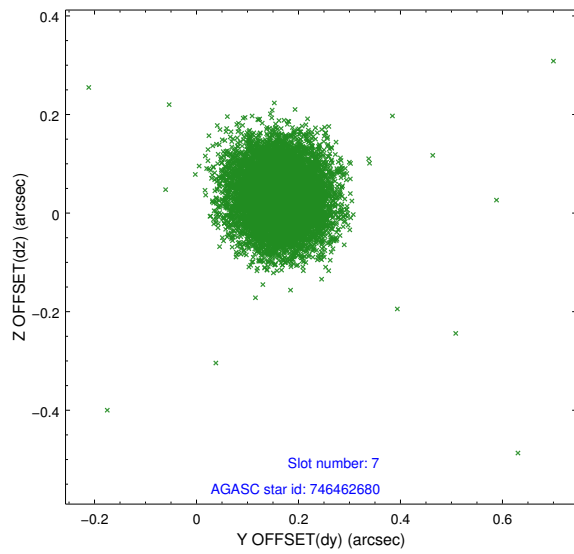
### 2.4.3 Slot 5



## 2.4.4 Slot 6

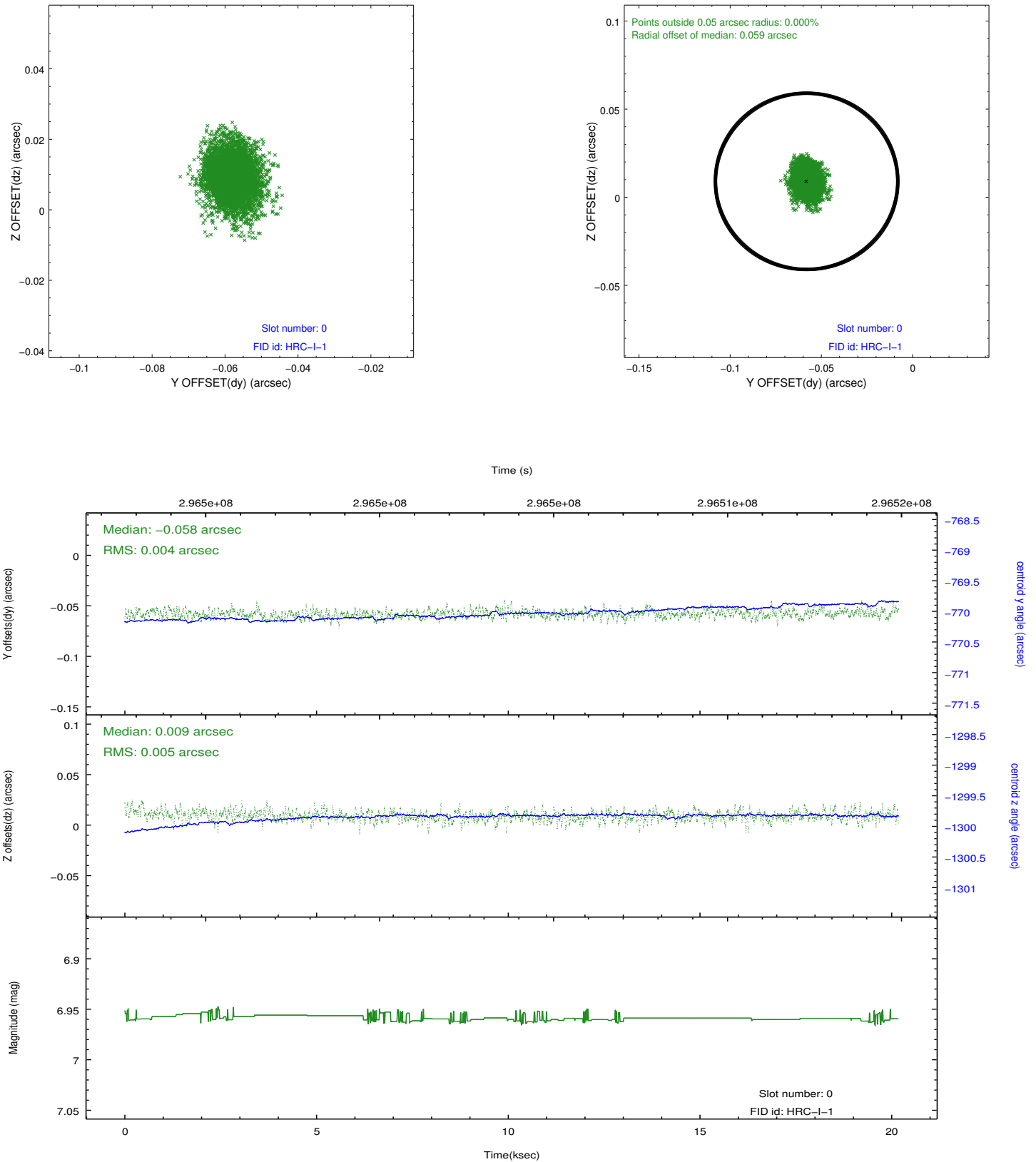


## 2.4.5 Slot 7

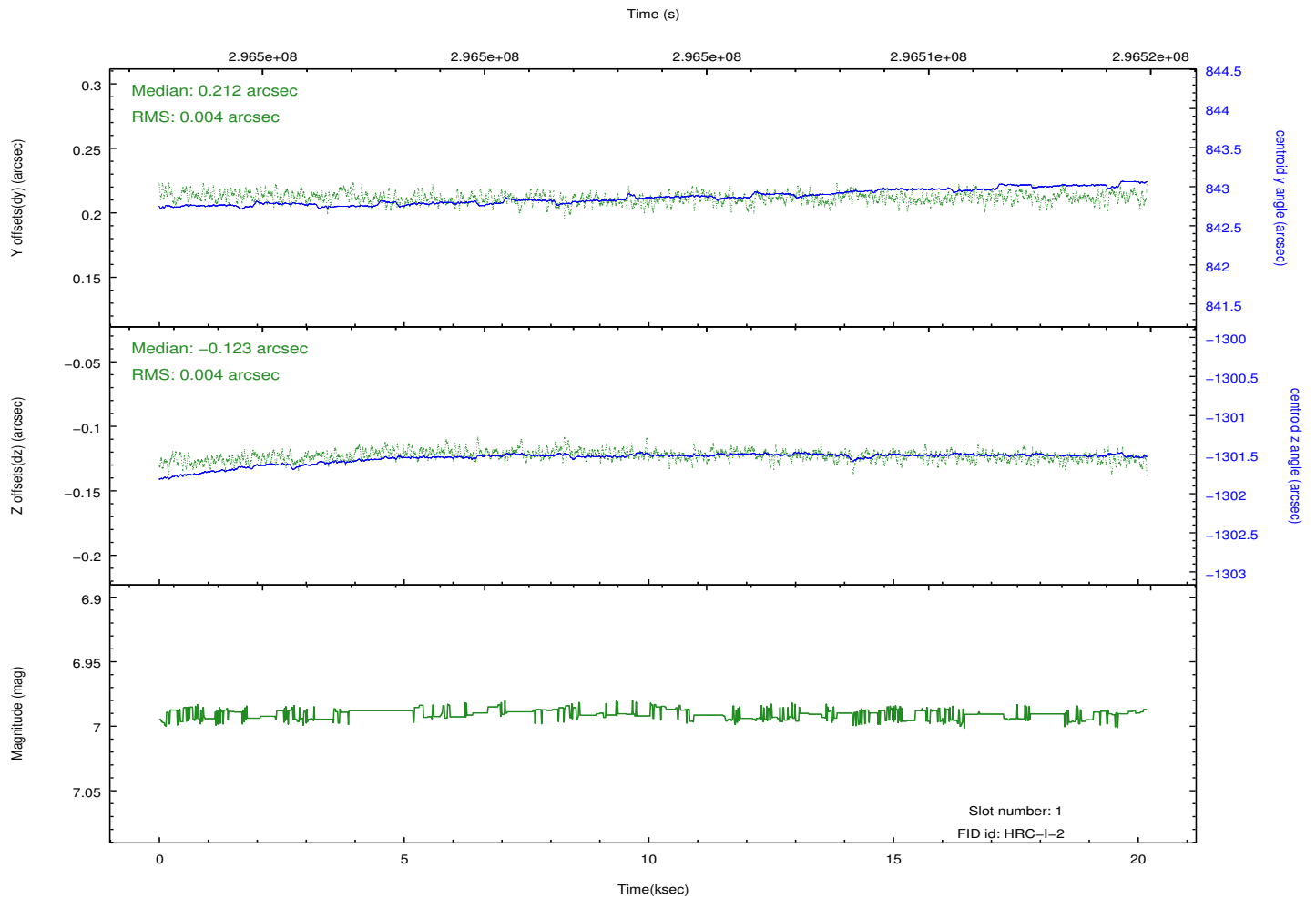
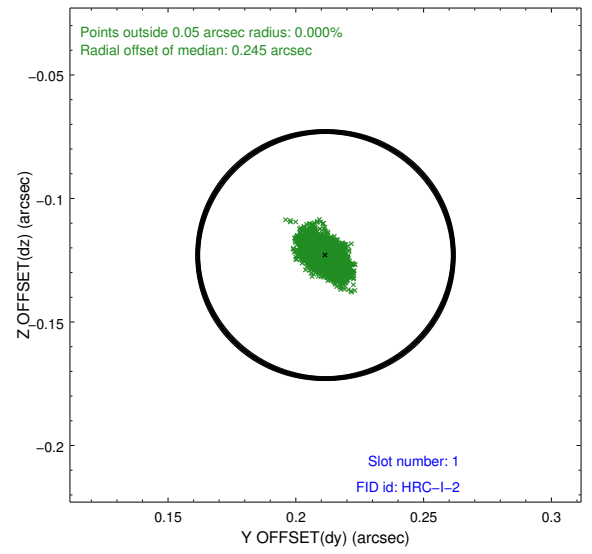
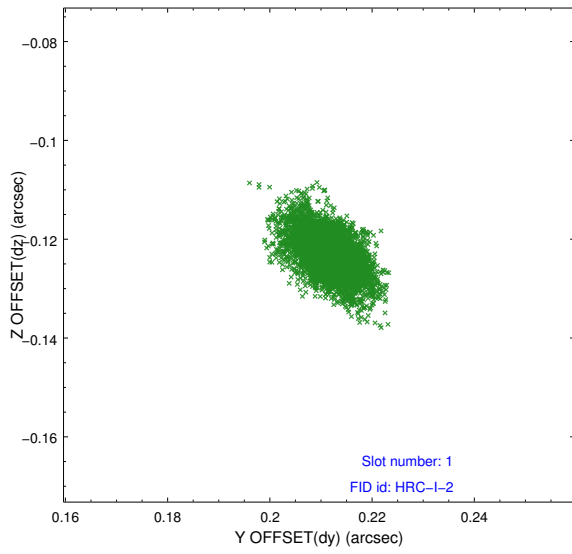


## 2.5 FID Slots

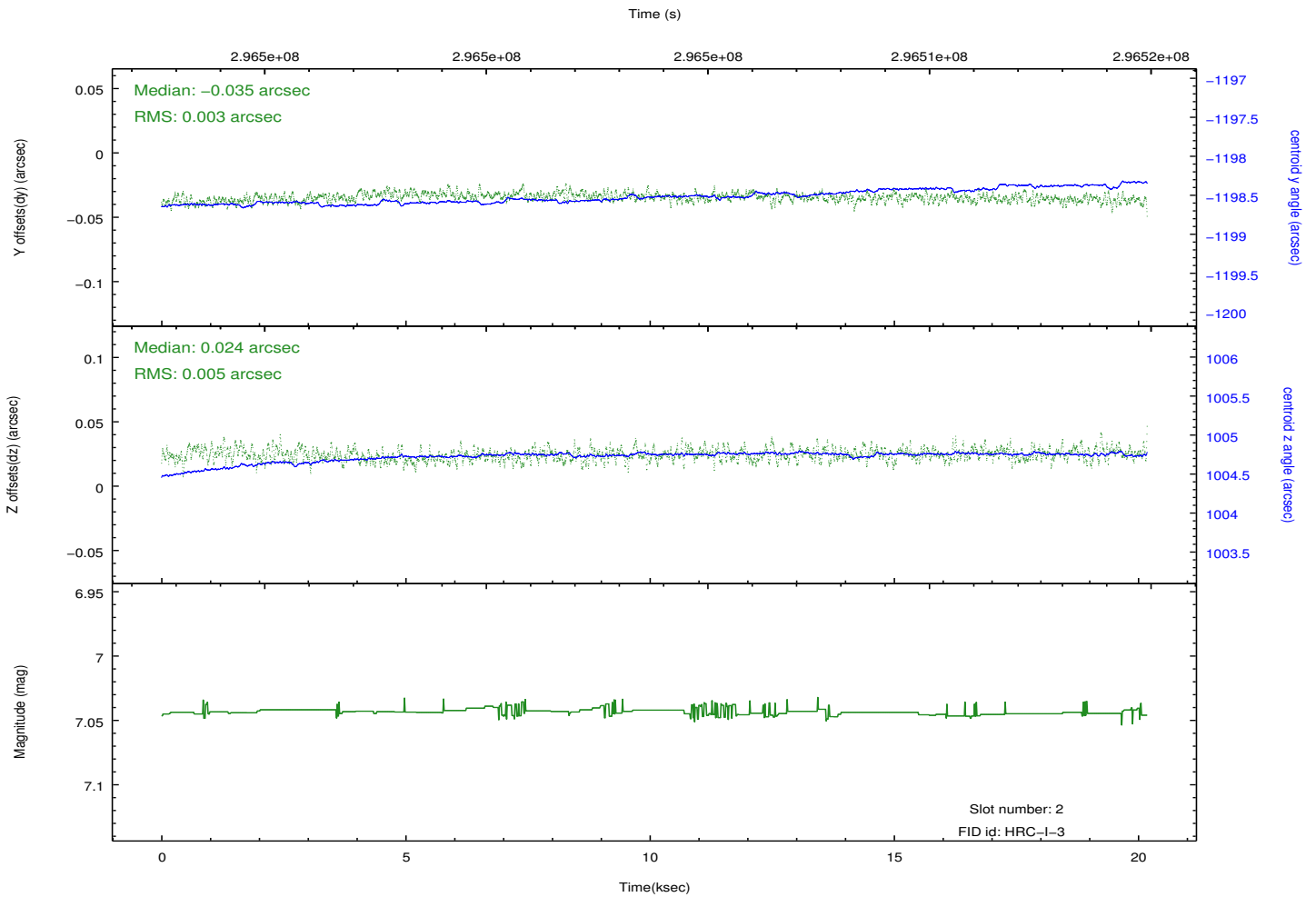
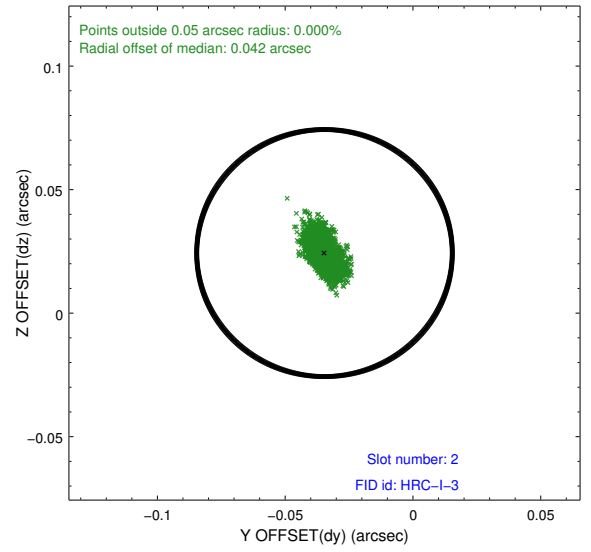
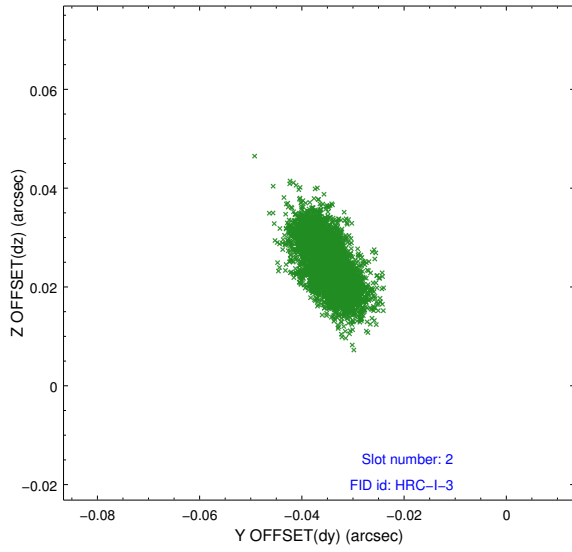
### 2.5.1 Slot 0



## 2.5.2 Slot 1



### 2.5.3 Slot 2



# A Summary

## A.1 Status

V&V Scientist	Jen Lauer
V&V Date (YYYY-MM-DD)	2012.08.15
V&V Edition	1
V&V Disposition and Status	OK
V&V Charge Time	20.1814822

## A.2 Comments

Window constraint met.