

V&V Reference Report

L2 ASCDS Version : 8.4.3.1

Observation 8493 - L2 Version 3
Chandra X-Ray Center

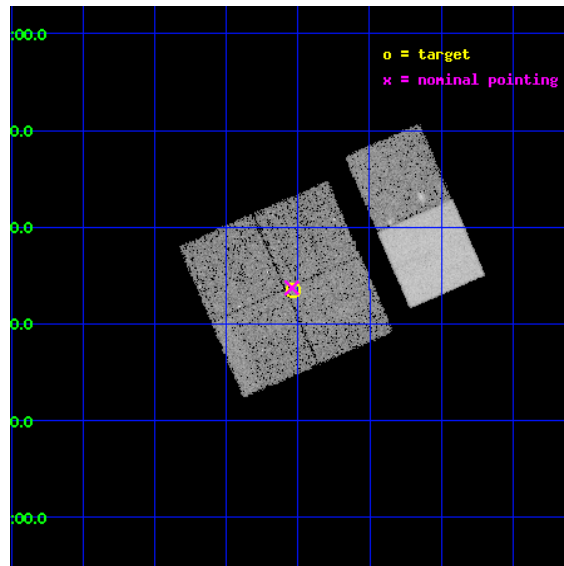
L2 Processing Date : Apr 15 2012

Contents

1	Front	2
2	OBI	3
2.1	OBI	3
2.1.1	Images	3
2.1.2	Bias	3
2.1.3	Parameters	4
2.1.4	Events	4
2.2	Compared Parameters	5
2.3	Aspect	6
2.4	Star Slots	9
2.4.1	Slot 3	9
2.4.2	Slot 4	10
2.4.3	Slot 5	11
2.4.4	Slot 6	12
2.4.5	Slot 7	13
2.5	FID Slots	14
2.5.1	Slot 0	14
2.5.2	Slot 1	15
2.5.3	Slot 2	16
A	Summary	17
A.1	Status	17
A.2	Comments	17

1 Front

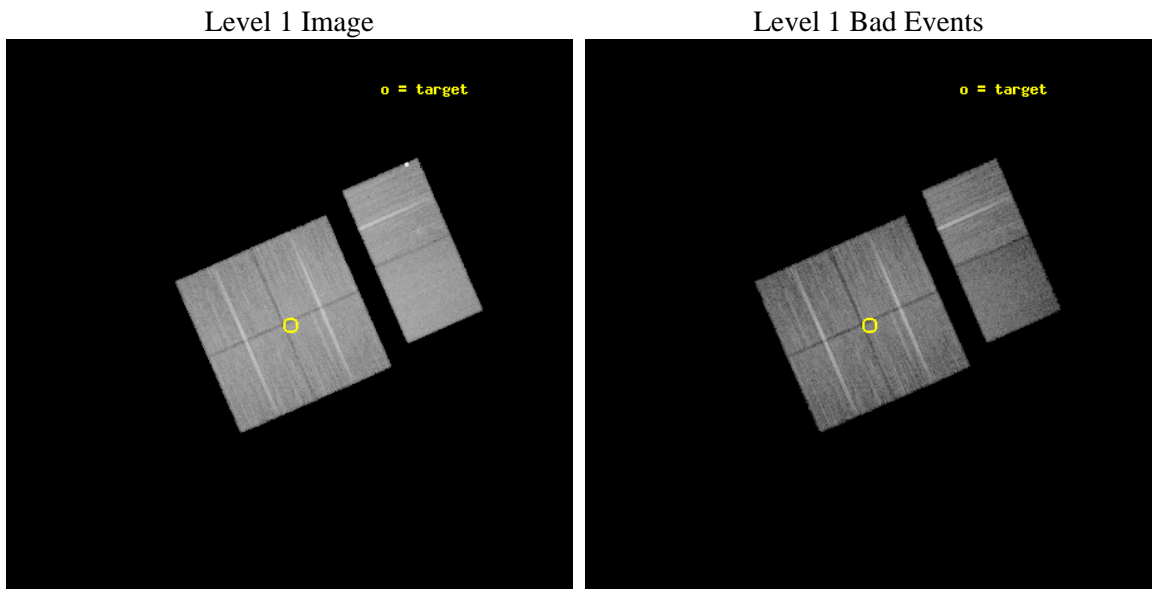
seq_num	900542	Sequence number
obs_id	8493	Observation id
title	THE CHANDRA-COSMOS SURVEY	Proposal title
observer	Dr. Martin Elvis	Principal investigator
object	C-COSMOS1-5	Source name
dtcycle	0	
cycle	P	events from which exps? Prim/Second/Both
ra_targ	150.007442	Observer's specified target RA [deg]
dec_targ	2.559042	Observer's specified target Dec [deg]
ra_nom	150.01078087397	Nominal RA [deg]
dec_nom	2.562318490811	Nominal Dec [deg]
roll_nom	66.40855242842	Nominal Roll [deg]
revision	3	Processing version of data
ontime	20028.758945167	Sum of GTIs [s]
livetime	19775.142739533	Livetime [s]
ontime0	20031.999925435	Sum of GTIs [s]
ontime1	20031.999925435	Sum of GTIs [s]
ontime2	20031.999925435	Sum of GTIs [s]
ontime3	20028.758945167	Sum of GTIs [s]
ontime6	20031.999925435	Sum of GTIs [s]
ontime7	20031.999925435	Sum of GTIs [s]
l2events	130837	Number of level 2 events



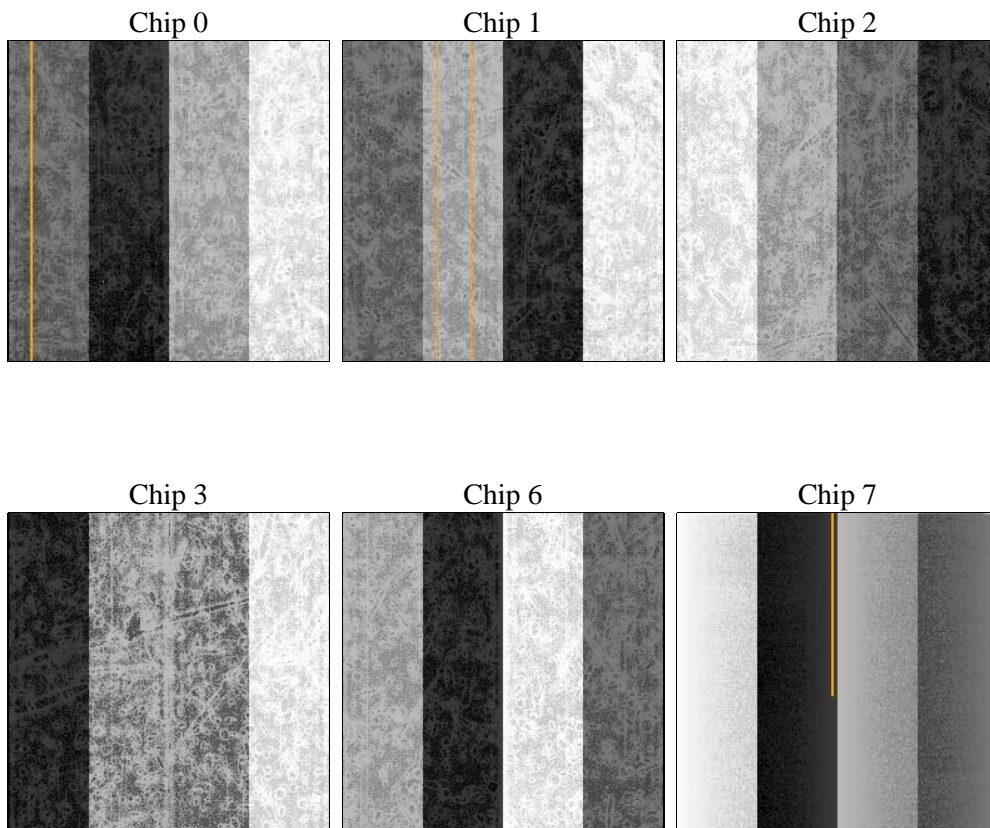
2 OBI

2.1 OBI

2.1.1 Images



2.1.2 Bias



2.1.3 Parameters

obi_num	2	Obi number	sched_exp_time	20000.000000	[s] Scheduled observation exposure time
ascdsver	8.4.3.1	Processing system revision	ontime	20028.758945167	Sum of GTIs [s]
caldbver	4.4.9	 	ontime0	20031.999925435	Sum of GTIs [s]
date	2012-04-15T14:33:24	Date and time of file creation	ontime1	20031.999925435	Sum of GTIs [s]
revision	3	Processing version of data	ontime2	20031.999925435	Sum of GTIs [s]
			ontime3	20028.758945167	Sum of GTIs [s]
			ontime6	20031.999925435	Sum of GTIs [s]
			ontime7	20031.999925435	Sum of GTIs [s]
			l1events	851002	Number of level 1 events

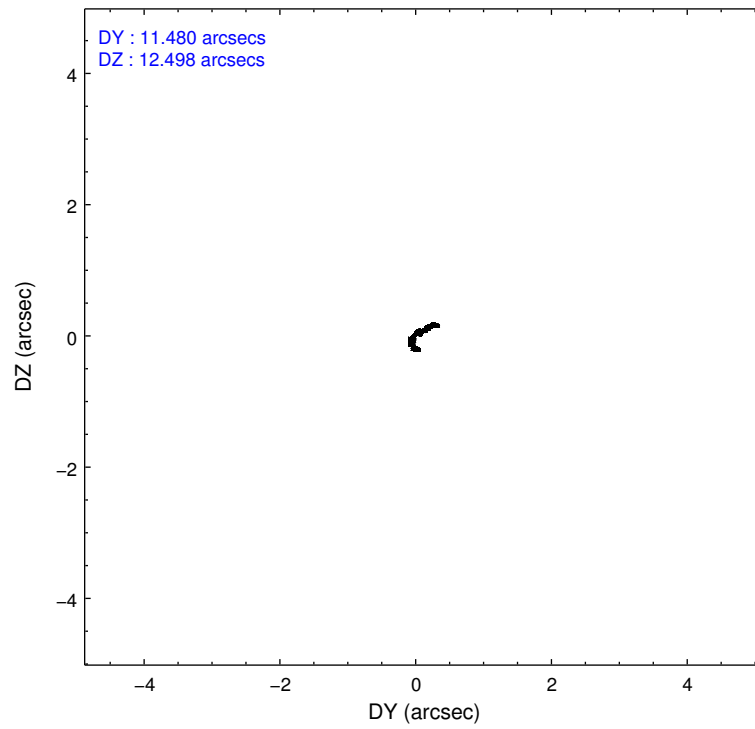
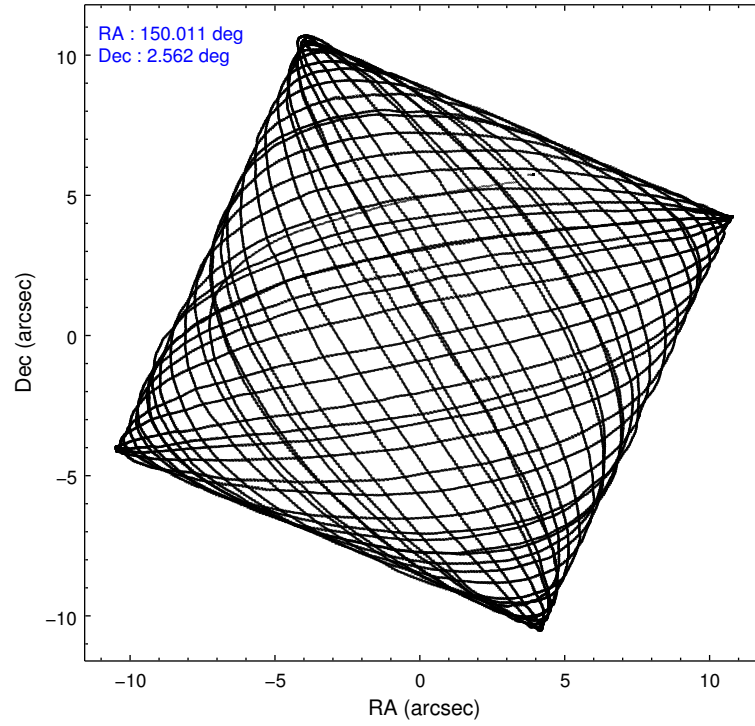
2.1.4 Events

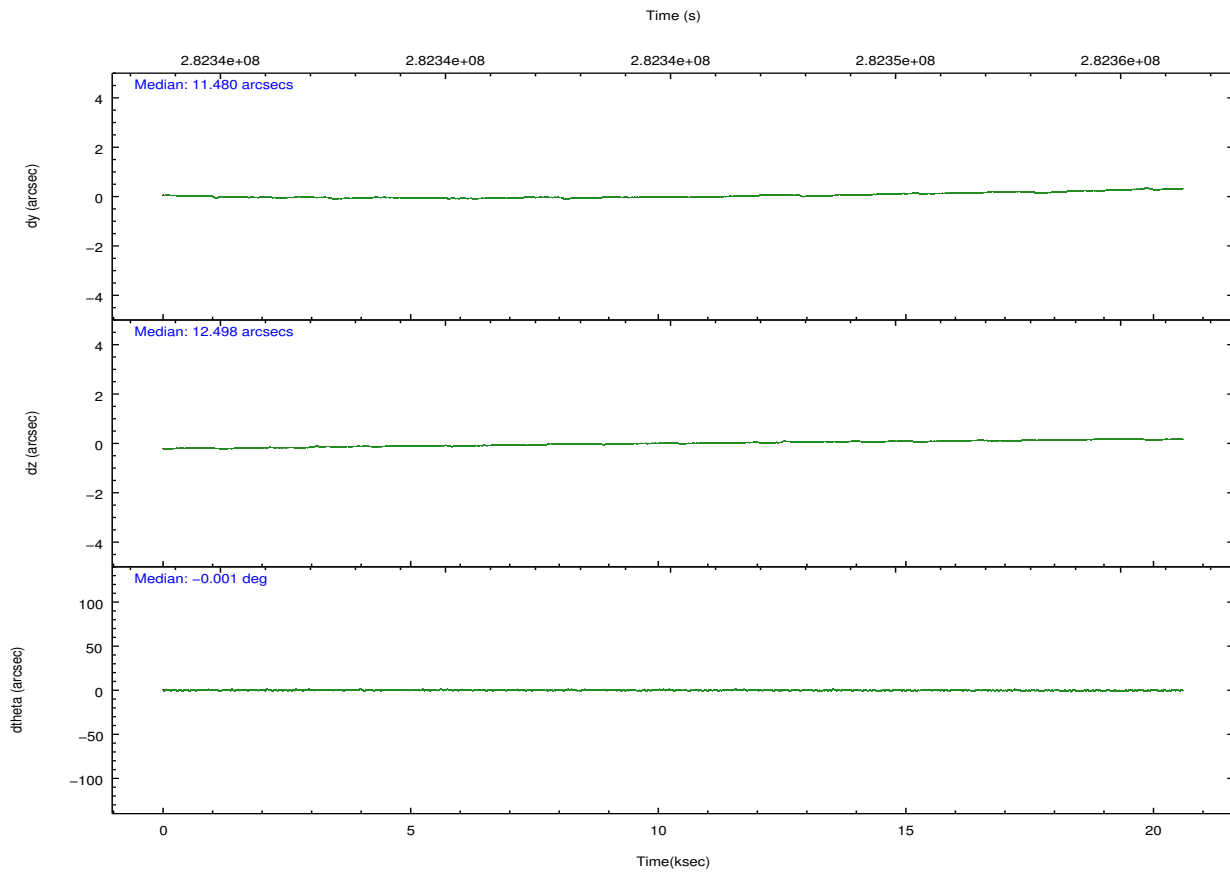
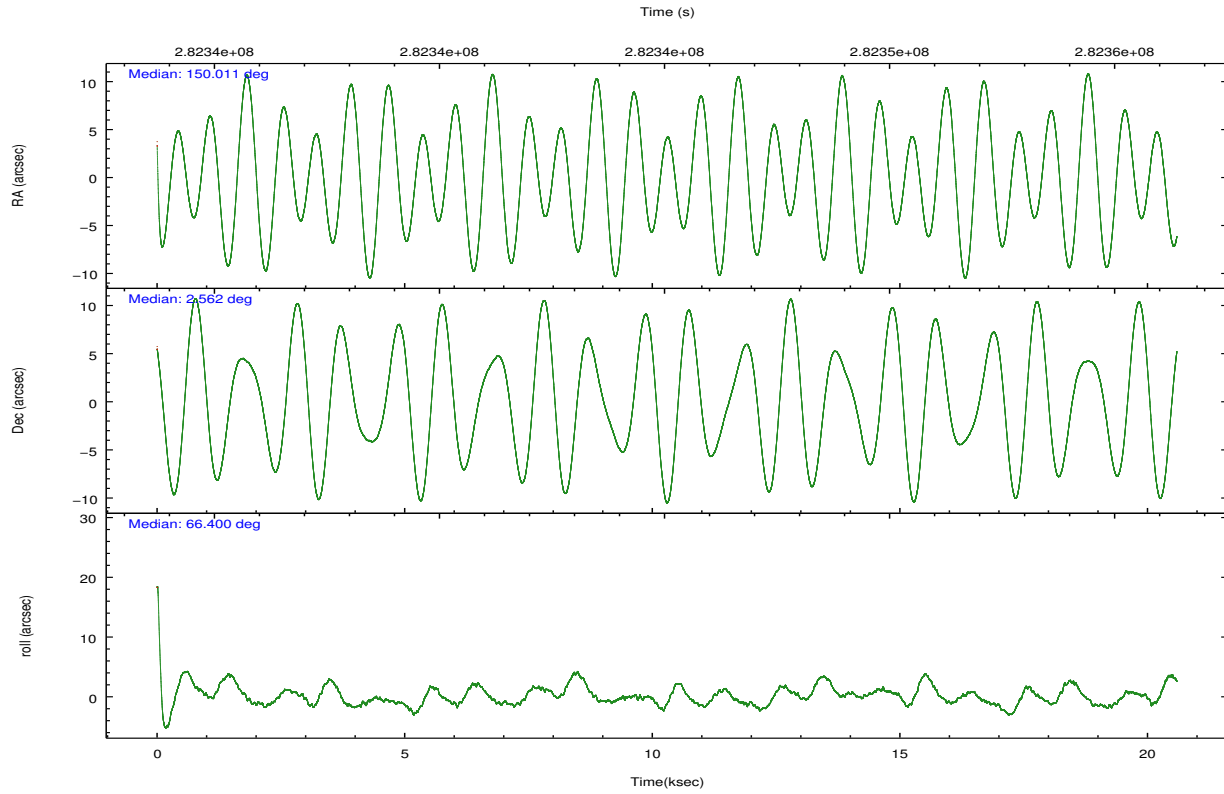
	ccd 0	ccd 1	ccd 2	ccd 3	ccd 6	ccd 7		ccd 0	ccd 1	ccd 2	ccd 3	ccd 6	ccd 7
level 1 events	127560	129365	147971	136171	154152	155783	grade 0 events	5306	5864	5232	5114	5732	6926
rejected events	113072	113586	133737	122602	132627	83798		4%	4%	3%	3%	3%	4%
rejected %	88%	87%	90%	90%	86%	53%	grade 1 events	77	59	67	72	67	196
								0%	0%	0%	0%	0%	0%
							grade 2 events	3400	3465	3438	2879	9285	14370
								2%	2%	2%	2%	6%	9%
							grade 3 events	1585	1610	1433	1468	1593	6570
								1%	1%	0%	1%	1%	4%
							grade 4 events	1449	1601	1467	1488	1624	6549
								1%	1%	0%	1%	1%	4%
							grade 5 events	4625	5159	4566	5552	5633	16246
								3%	3%	3%	4%	3%	10%
							grade 6 events	2750	3245	2668	2624	3299	37591
								2%	2%	1%	1%	2%	24%
							grade 7 events	108368	108362	129100	116974	126919	67335
								84%	83%	87%	85%	82%	43%

2.2 Compared Parameters

Parameter	Planned	Actual	Parameter	Planned	Actual
Instrument	ACIS	ACIS	Obspar format version number	7	7
Detector	ACIS-012367	ACIS-012367	Obspar file type	PREDICTED	ACTUAL
Grating	NONE	NONE	Obspar update status	NONE	UPDATED
Data mode	VFAINT	VFAINT	CCD I0 on	Y	Y
Observation mode	POINTING	POINTING	CCD I1 on	Y	Y
[deg] Pointing RA	150.013978	150.0107808739659	CCD I2 on	Y	Y
[deg] Pointing Dec	2.535031	2.56231849081099	CCD I3 on	Y	Y
[deg] Pointing Roll	66.199716	66.40855242842034	CCD S0 on	N	N
[mm] SIM focus pos	-0.782348	-0.7809083437167272	CCD S1 on	N	N
[mm] SIM defocus	0	0.001439871863259334	CCD S2 on	O1	Y
[mm] SIM translation stage pos	-233.592463	-233.5874344608287	CCD S3 on	O2	Y
[mm] SIM translation stage offset	0	-0.005018542100998502	CCD S4 on	N	N
[s] Observation start time (MET)	282335347.184000	282334130.41387	CCD S5 on	N	N
Observation start date	2006-12-12T18:28:02	2006-12-12T18:08:50	Number of optional ACIS chips dropped	0	0
[s] Observation end time (MET)	282355347.184000	282356538.45243	On-chip summing requested	N	N
Observation end date	2006-12-13T00:01:22	2006-12-13T00:22:18	Subarray requested	NONE	NONE
Read mode	TIMED	TIMED	Alternating exposures requested	N	N
			[s] Primary exposure time	0.000000	3.2

2.3 Aspect



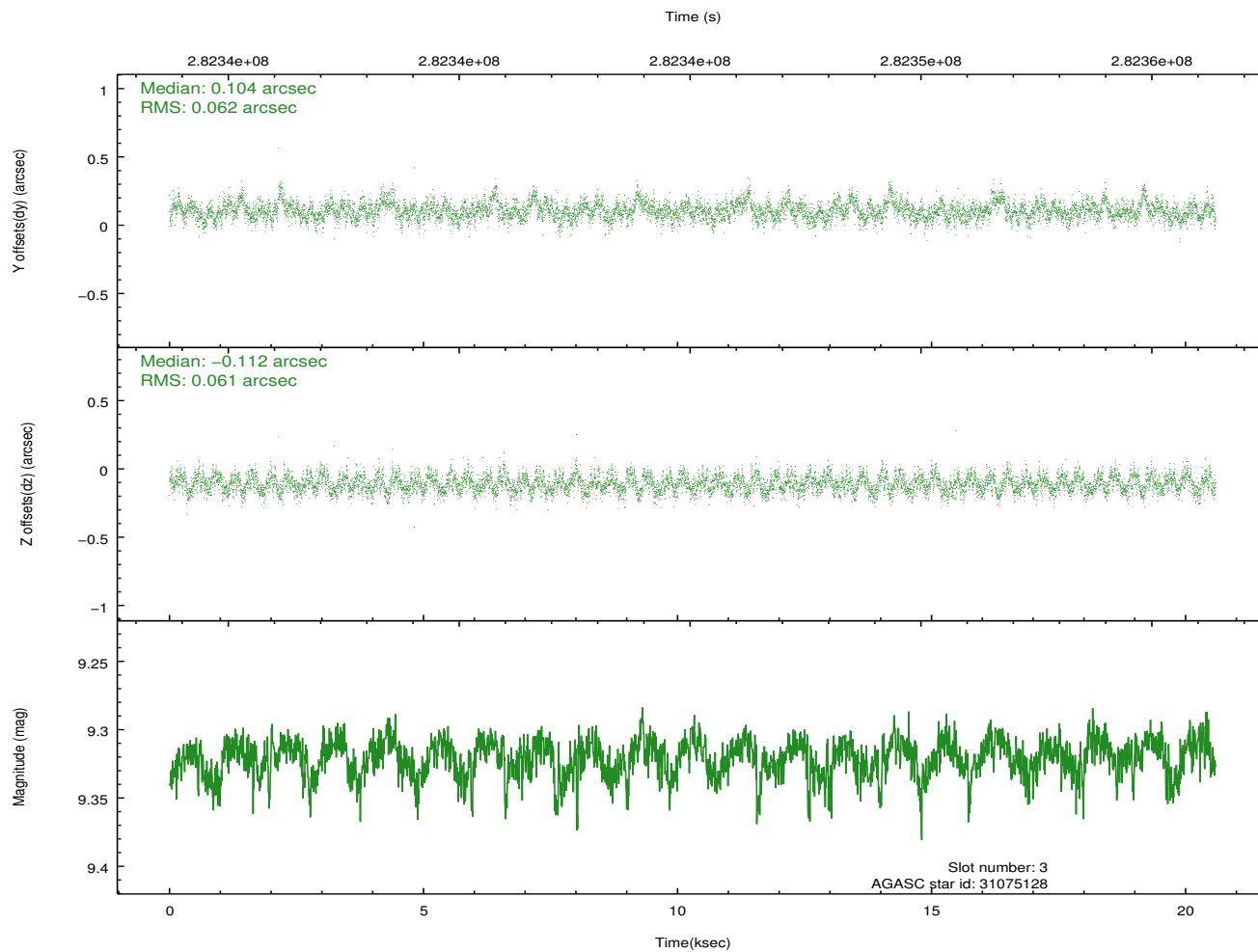
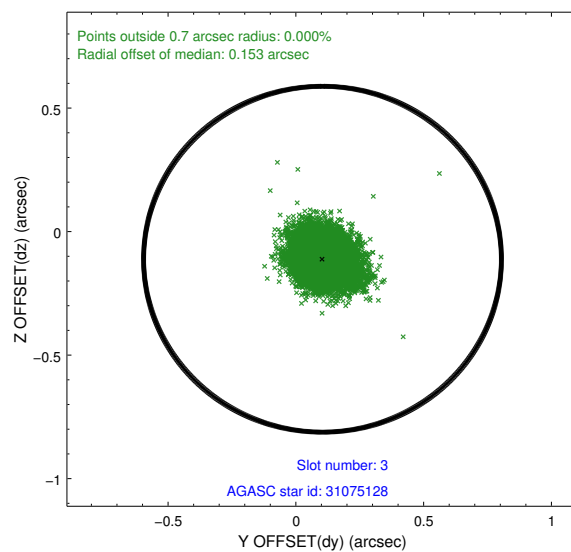
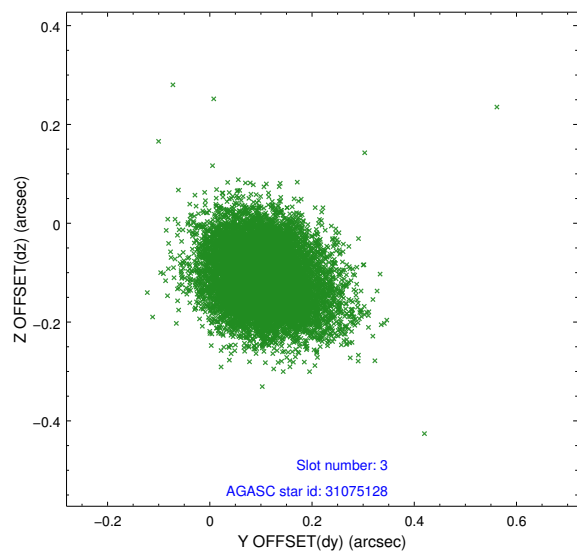


Slot Statistics

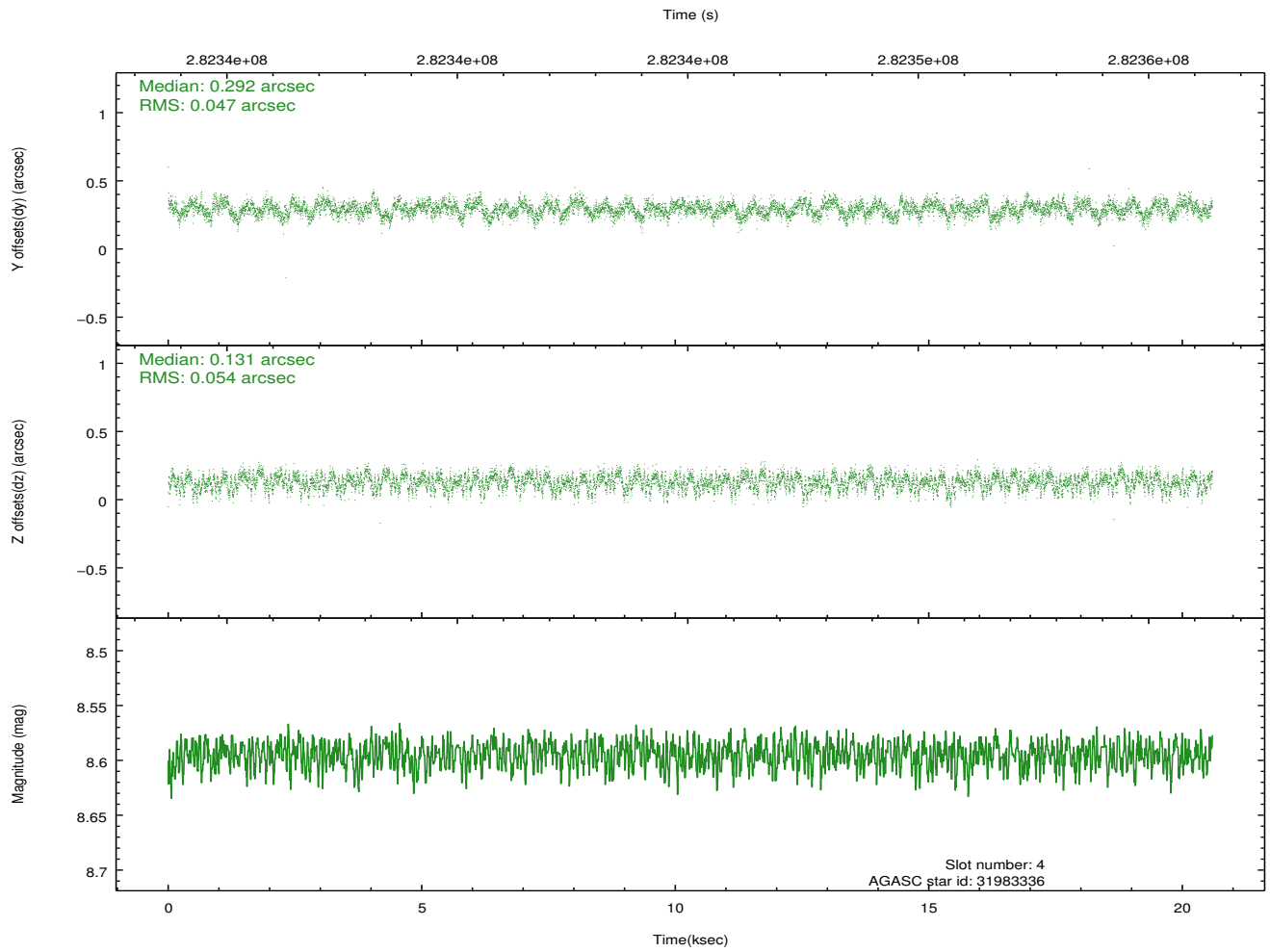
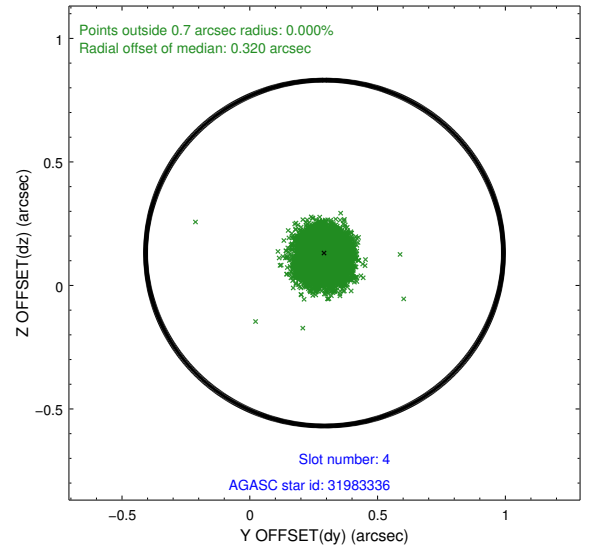
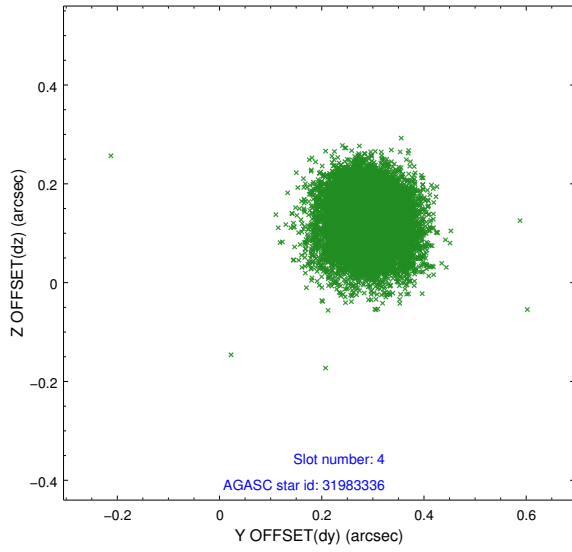
slot	status	id	mag	n_pts	med_dy	med_dz	dr1	dr2	ra	dec	mean_y	mean_z
0	FID	ACIS-I-1	7.25	5022	0.060	-0.023	0.007	0.013	0.000000	0.000000	928.08	-836.06
1	FID	ACIS-I-5	7.24	5023	-0.215	0.064	0.006	0.011	0.000000	0.000000	-1820.18	1061.47
2	FID	ACIS-I-6	7.26	5023	0.064	0.030	0.007	0.012	0.000000	0.000000	393.47	1706.10
3	GUIDE	31075128	9.32	10039	0.104	-0.112	0.092	0.148	149.584516	2.364347	-1184.92	1165.41
4	GUIDE	31983336	8.59	10041	0.292	0.131	0.076	0.122	150.429924	2.291234	-198.10	-1722.69
5	GUIDE	32374896	9.23	10041	-0.173	0.303	0.091	0.146	150.682269	2.512794	897.81	-2230.89
6	GUIDE	32387968	9.21	9964	-0.162	-0.178	0.090	0.144	150.106347	3.119099	2058.22	544.75
7	GUIDE	31463496	9.46	10035	-0.063	-0.143	0.097	0.152	149.845020	2.964001	1168.36	1179.25

2.4 Star Slots

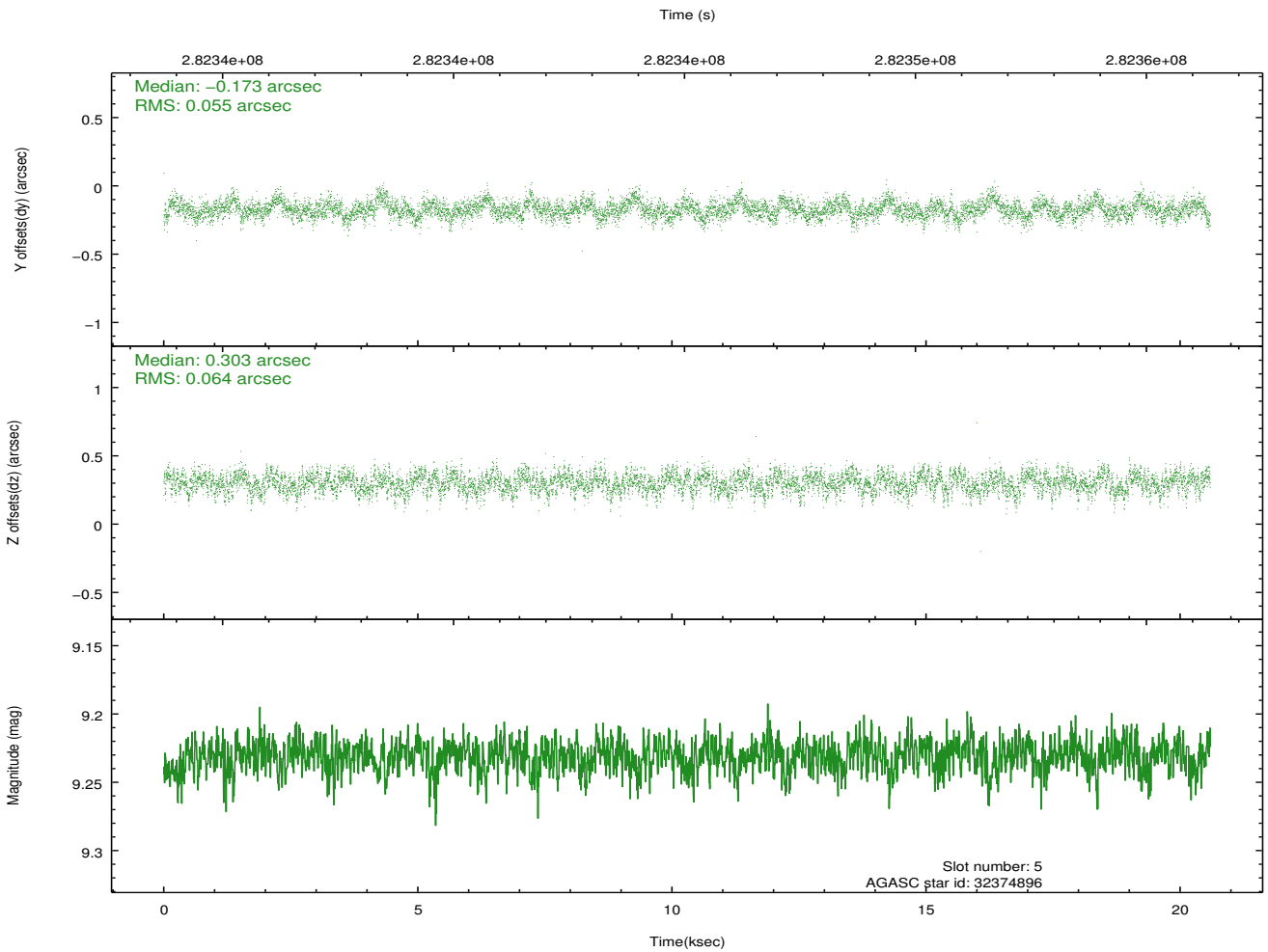
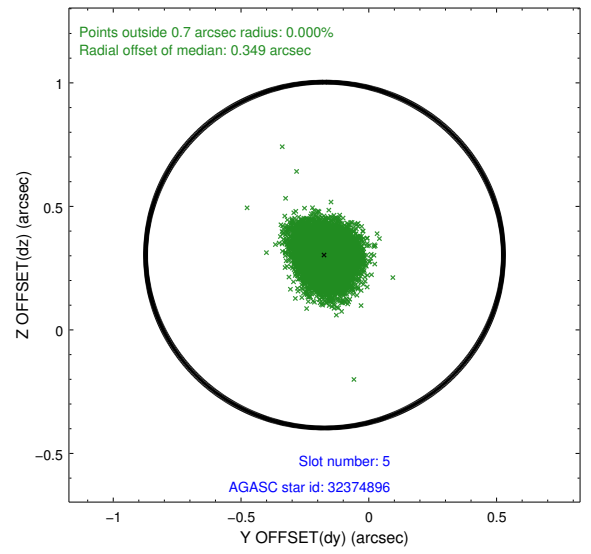
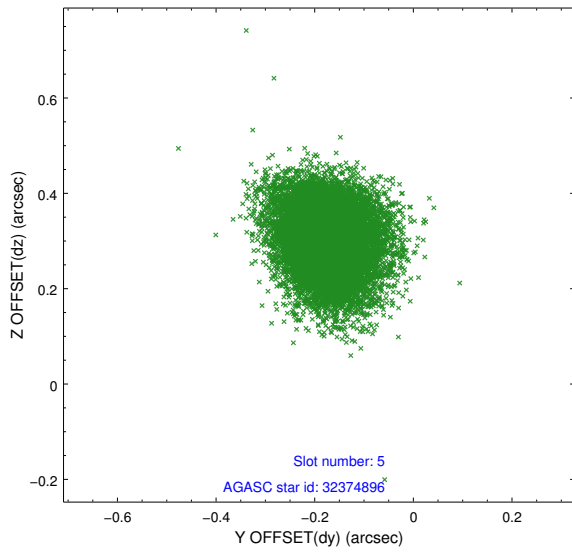
2.4.1 Slot 3



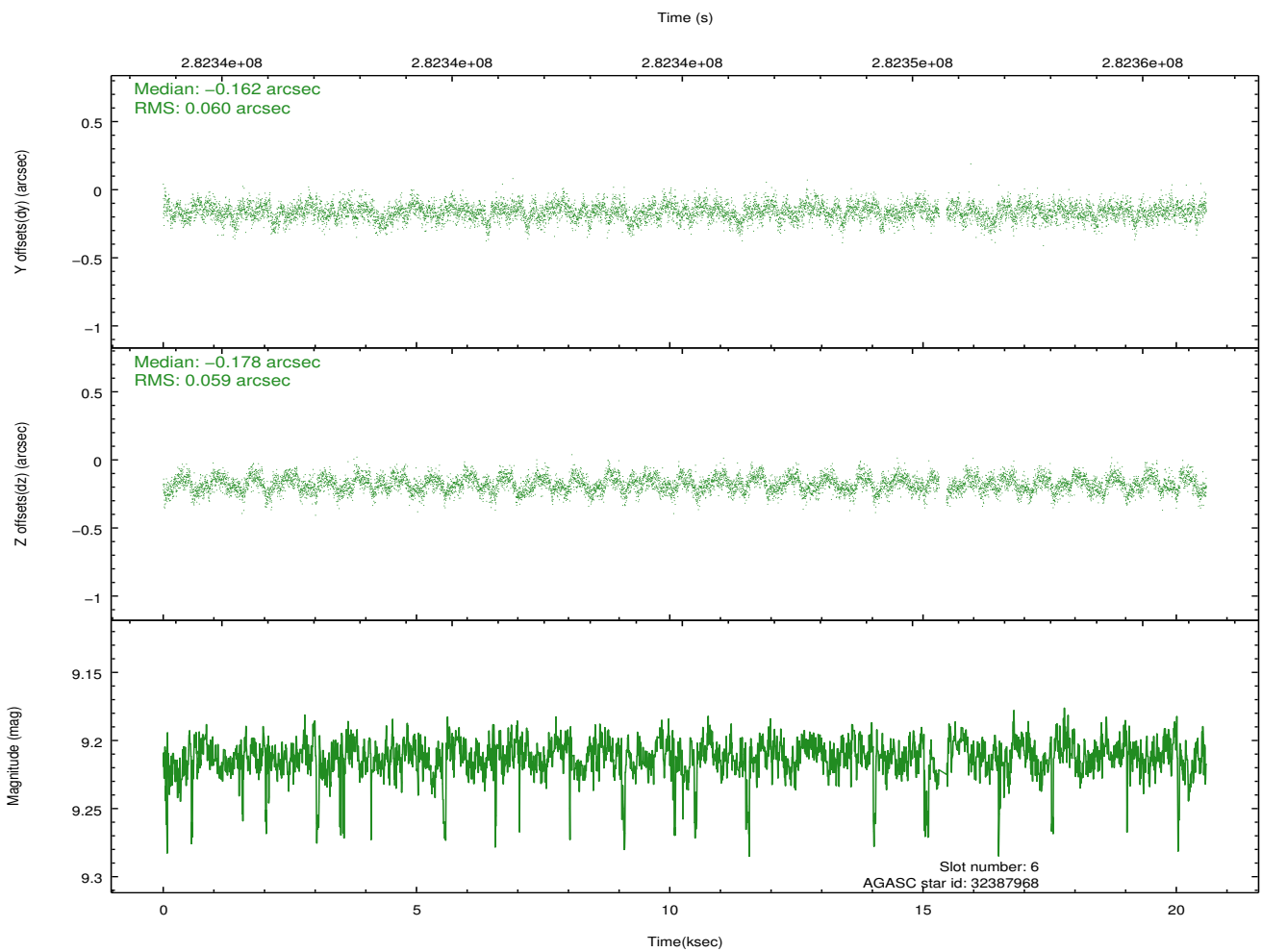
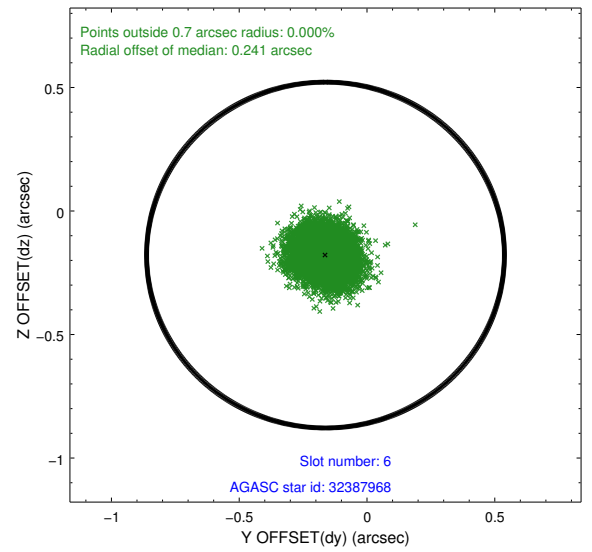
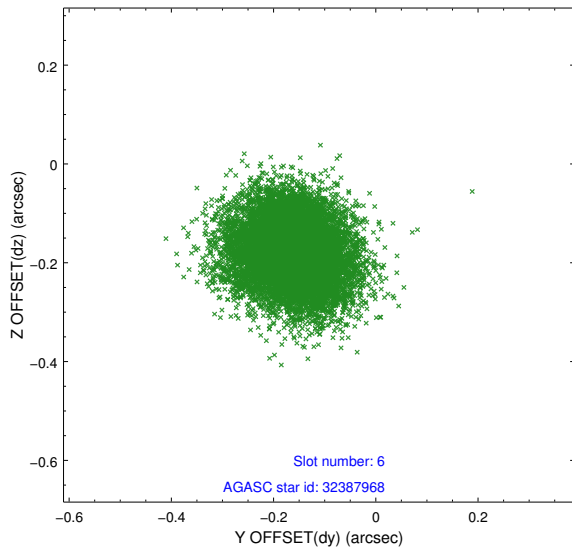
2.4.2 Slot 4



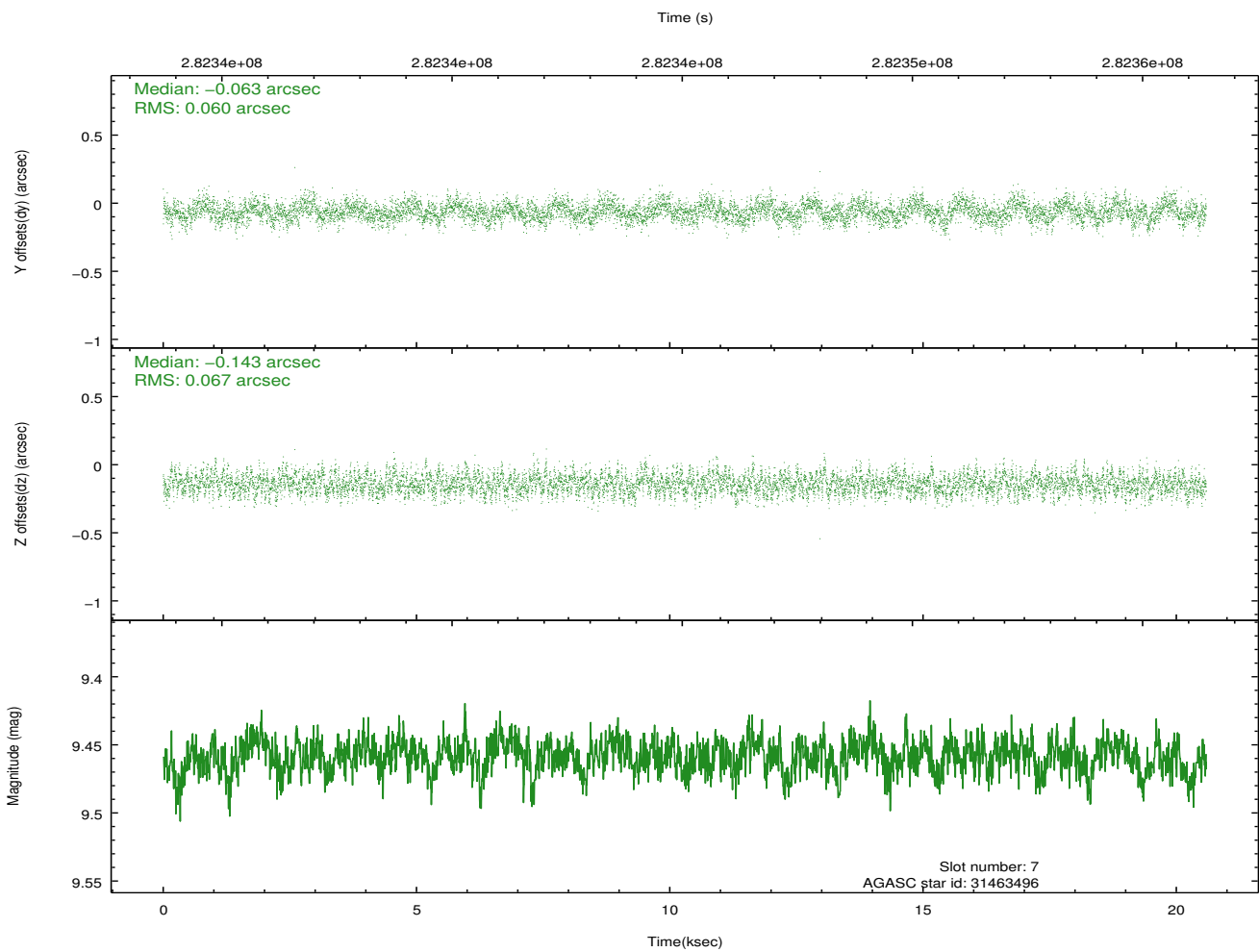
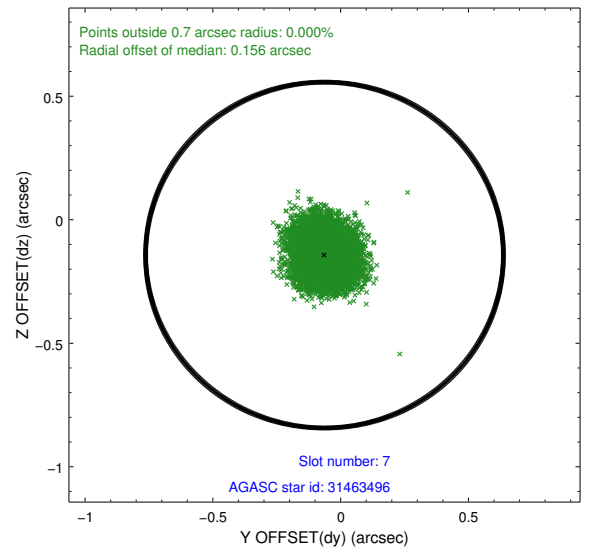
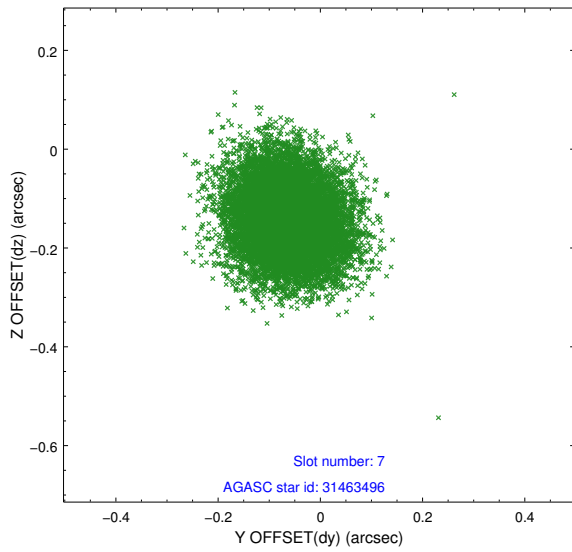
2.4.3 Slot 5



2.4.4 Slot 6

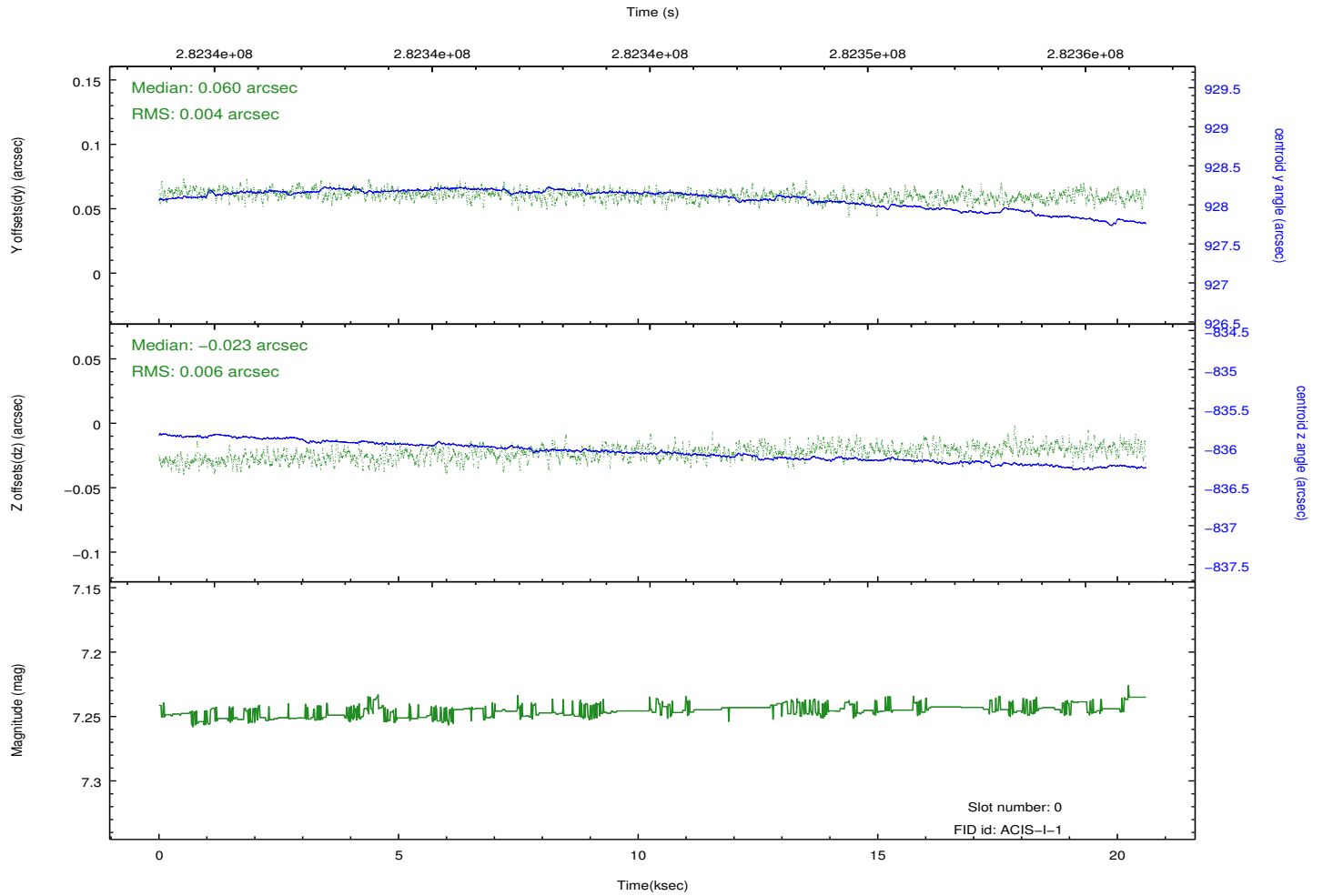
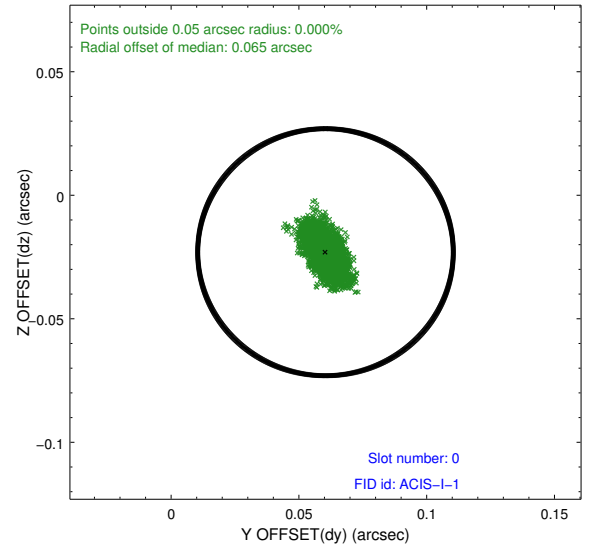
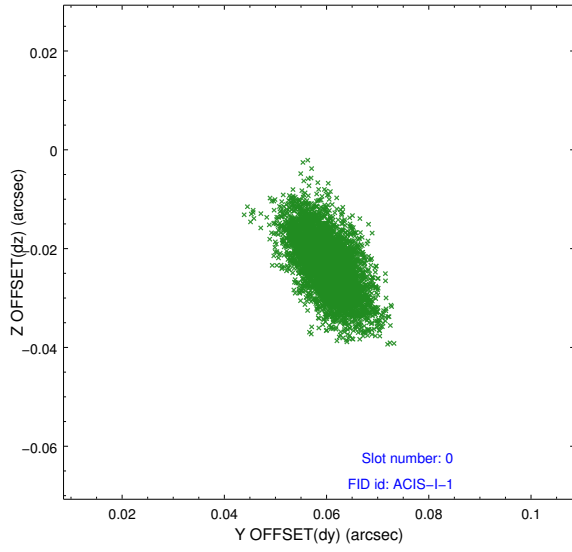


2.4.5 Slot 7

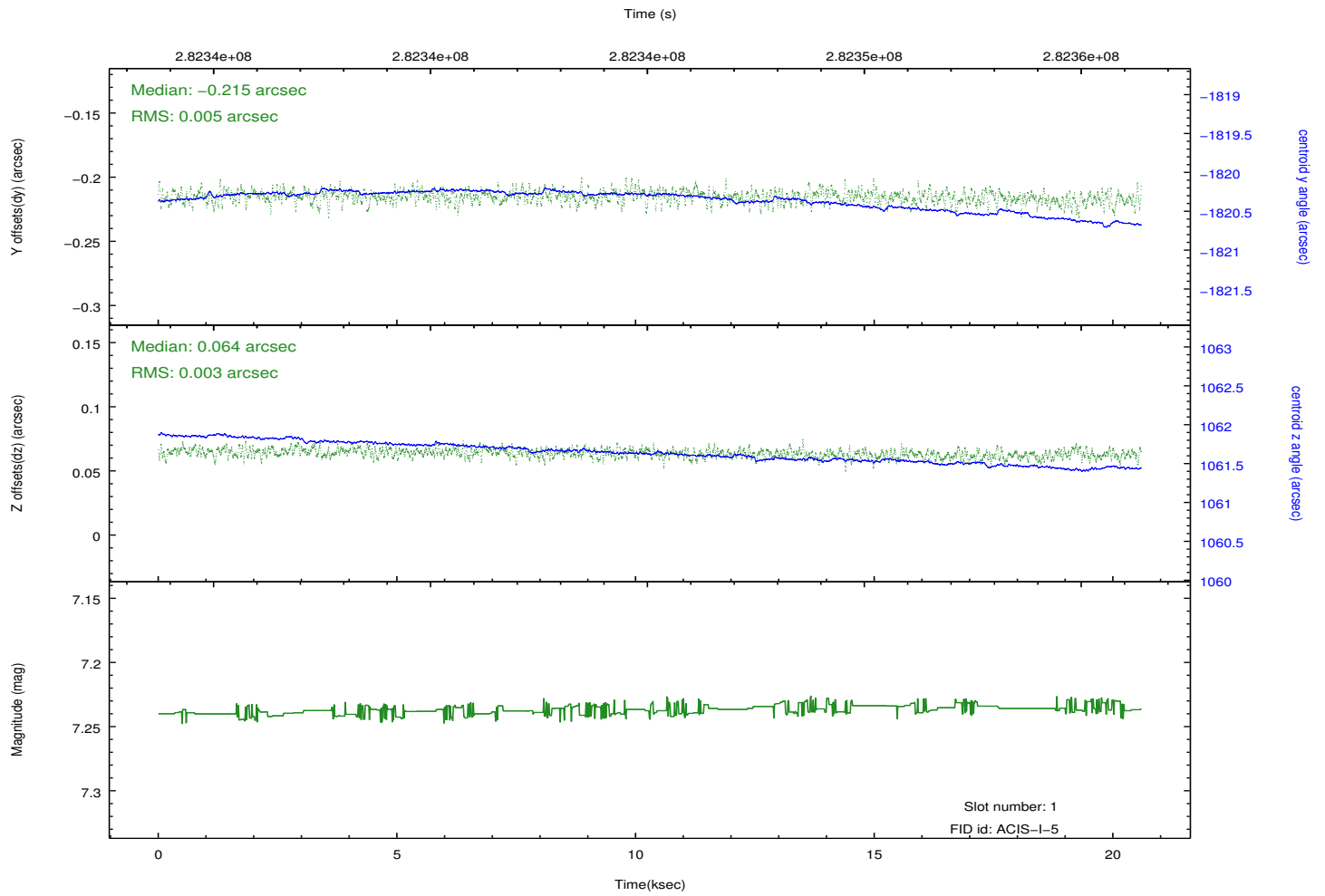
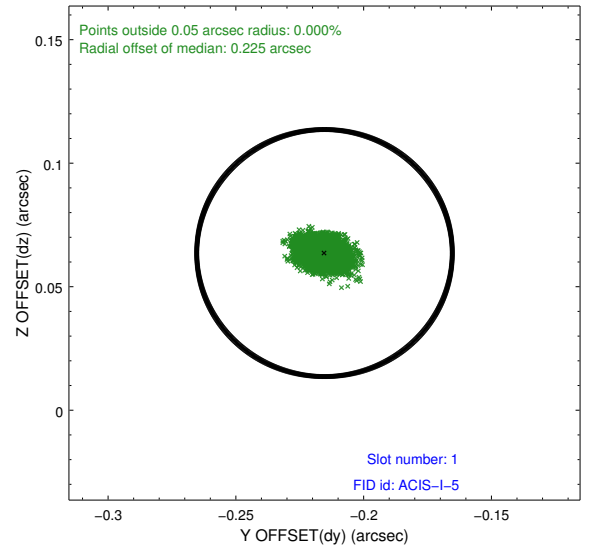
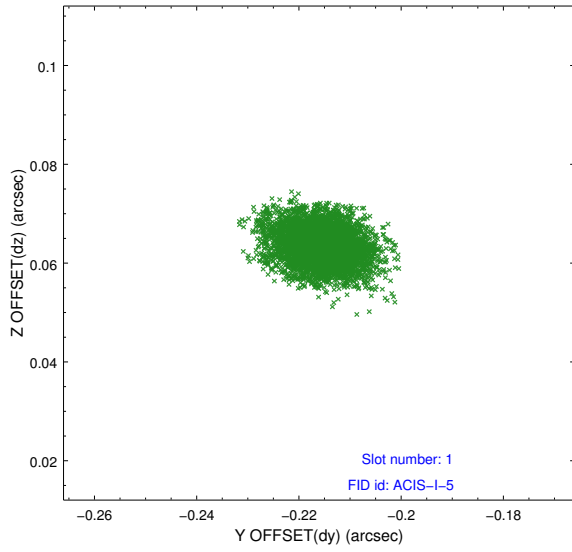


2.5 FID Slots

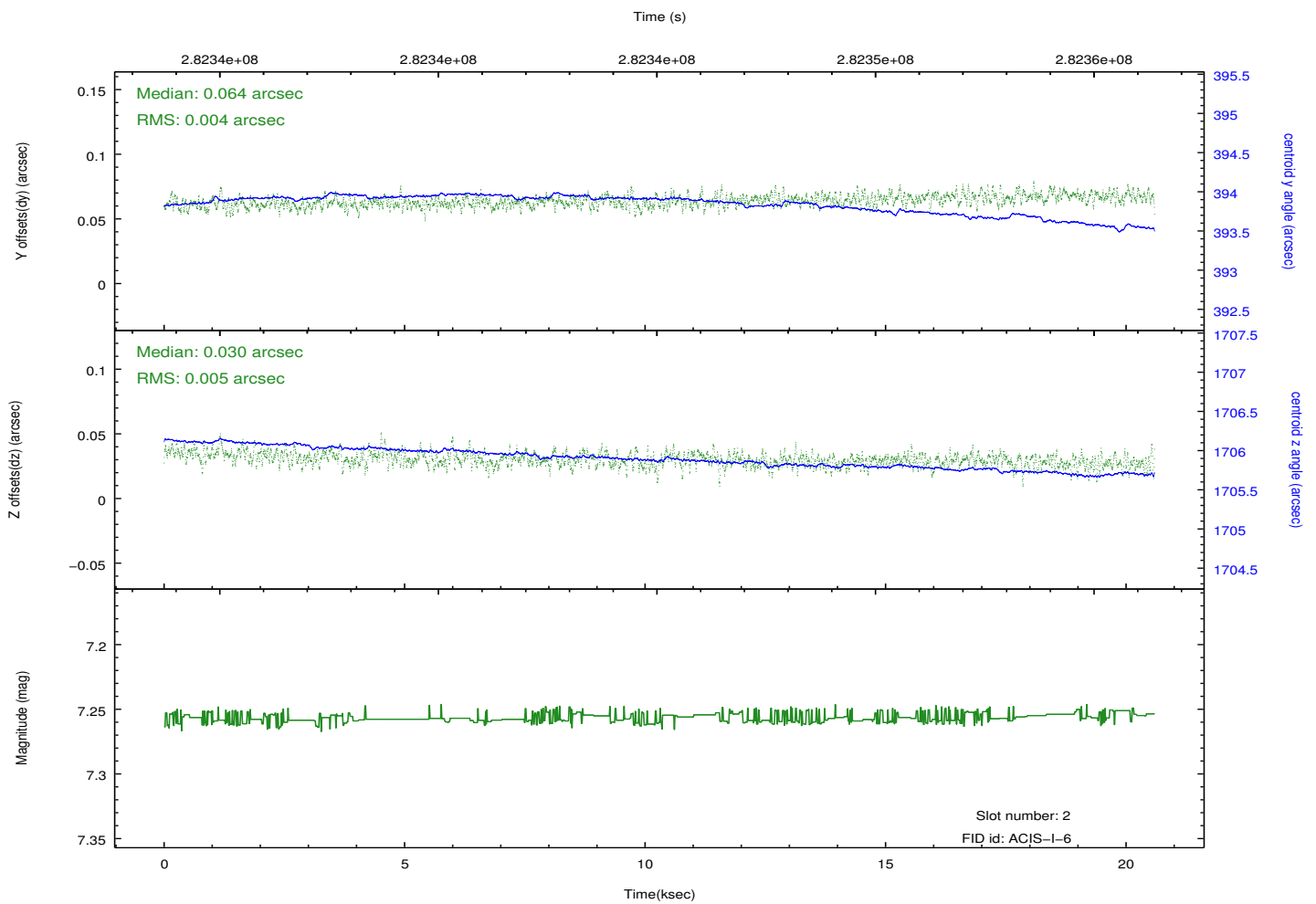
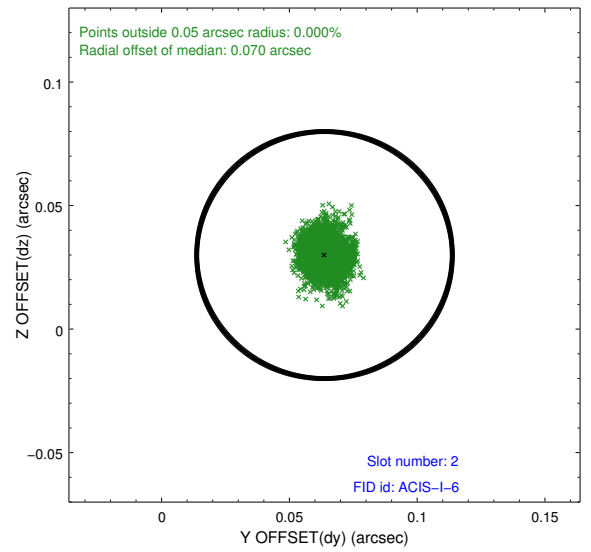
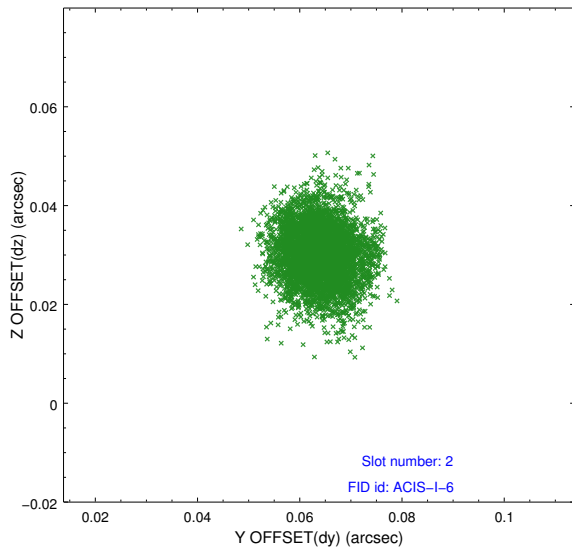
2.5.1 Slot 0



2.5.2 Slot 1



2.5.3 Slot 2



A Summary

A.1 Status

V&V Scientist	Beth Sundheim
V&V Date (YYYY-MM-DD)	2012.04.18
V&V Edition	1
V&V Disposition and Status	OK
V&V Charge Time	20.0287589

A.2 Comments