

V&V Reference Report

L2 ASCDS Version : 8.4.4

Observation 8583 - L2 Version 2
Chandra X-Ray Center

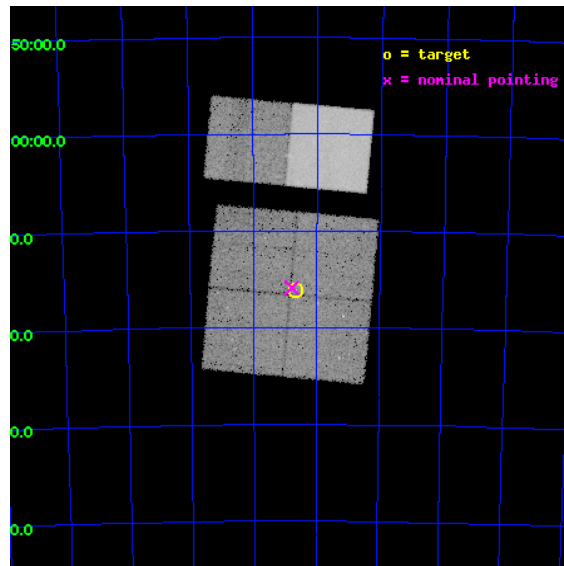
L2 Processing Date : May 31 2012

Contents

1	Front	2
2	OBI	3
2.1	OBI	3
2.1.1	Images	3
2.1.2	Bias	3
2.1.3	Parameters	4
2.1.4	Events	4
2.2	Compared Parameters	5
2.3	Aspect	6
2.4	Star Slots	9
2.4.1	Slot 3	9
2.4.2	Slot 4	10
2.4.3	Slot 5	11
2.4.4	Slot 6	12
2.4.5	Slot 7	13
2.5	FID Slots	14
2.5.1	Slot 0	14
2.5.2	Slot 1	15
2.5.3	Slot 2	16
A	Summary	17
A.1	Status	17
A.2	Comments	17

1 Front

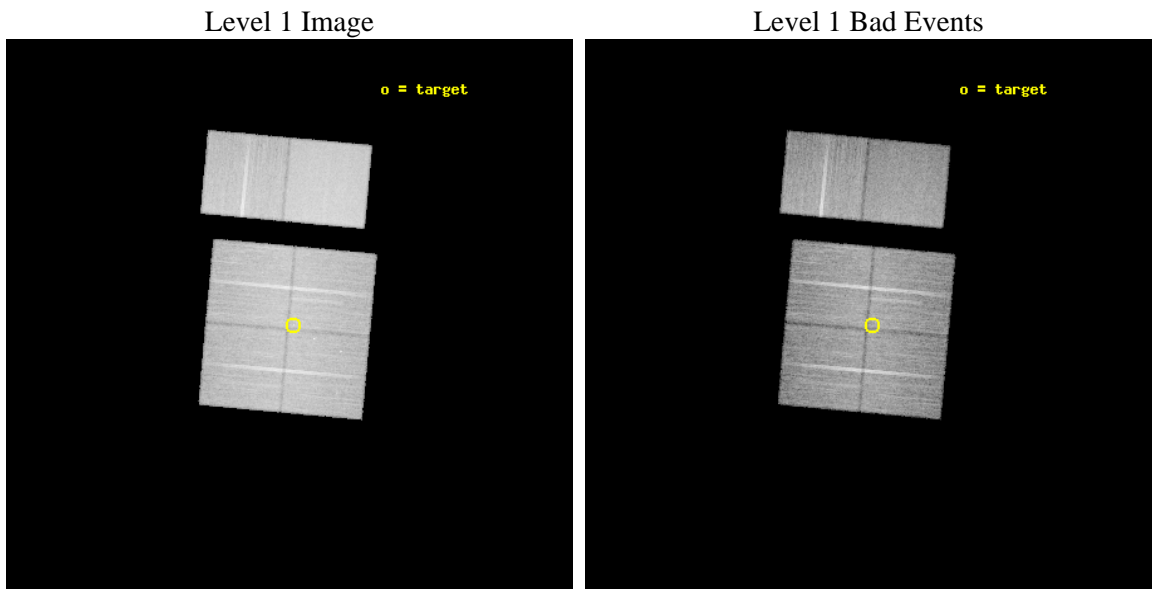
seq_num	200470	Sequence number
obs_id	8583	Observation id
title	Probing the Gas in the Planet Forming Regions of Protoplanetary Disks	Proposal title
observer	Dr. Nuria Calvet	Principal investigator
object	T35/SZ27	Source name
dtcycle	0	
cycle	P	events from which exps? Prim/Second/Both
ra_targ	167.162917	Observer's specified target RA [deg]
dec_targ	-77.267833	Observer's specified target Dec [deg]
ra_nom	167.19682561997	Nominal RA [deg]
dec_nom	-77.26473064114	Nominal Dec [deg]
roll_nom	5.2417571342133	Nominal Roll [deg]
revision	2	Processing version of data
ontime	19950.970308185	Sum of GTIs [s]
livetime	19698.33910911	Livetime [s]
ontime0	19950.847188175	Sum of GTIs [s]
ontime1	19950.888228178	Sum of GTIs [s]
ontime2	19950.929268181	Sum of GTIs [s]
ontime3	19950.970308185	Sum of GTIs [s]
ontime6	19947.811387956	Sum of GTIs [s]
ontime7	19951.011348188	Sum of GTIs [s]
l2events	221897	Number of level 2 events



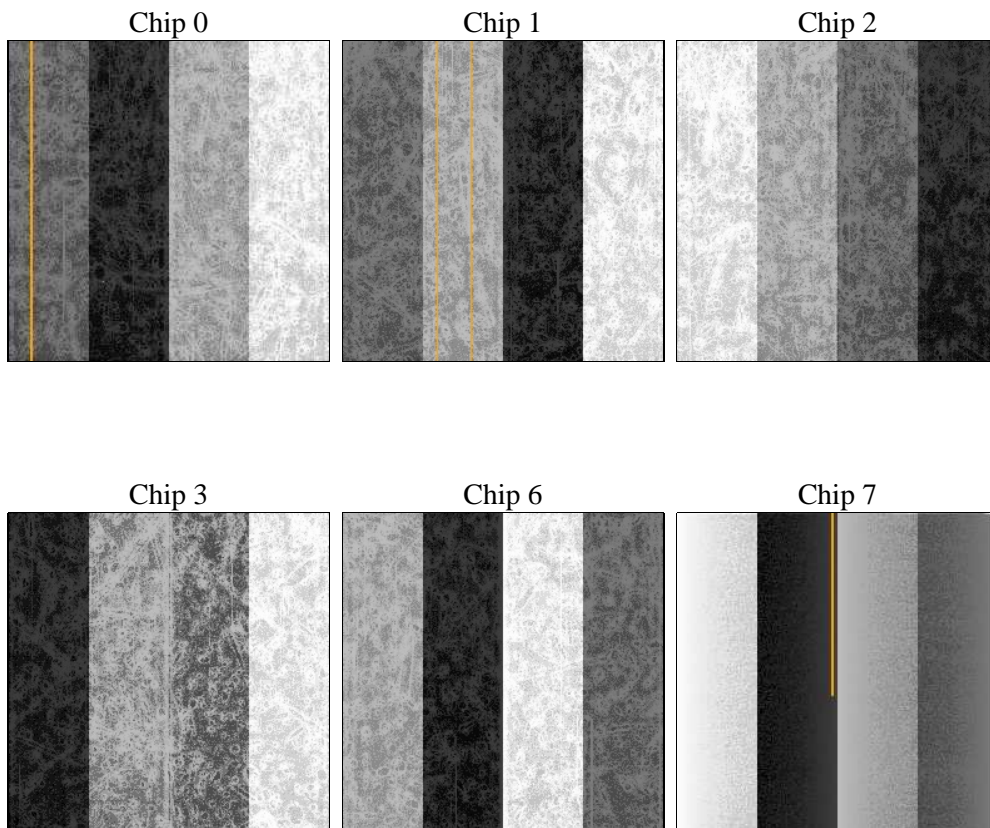
2 OBI

2.1 OBI

2.1.1 Images



2.1.2 Bias



2.1.3 Parameters

obi_num	1	Obi number	sched_exp_time	20000.000000	[s] Scheduled observation exposure time
ascdsver	8.4.4	Processing system revision	ontime	19950.970308185	Sum of GTIs [s]
caldbver	4.4.9	 	ontime0	19950.847188175	Sum of GTIs [s]
date	2012-05-31T15:41:23	Date and time of file creation	ontime1	19950.888228178	Sum of GTIs [s]
revision	2	Processing version of data	ontime2	19950.929268181	Sum of GTIs [s]
			ontime3	19950.970308185	Sum of GTIs [s]
			ontime6	19947.811387956	Sum of GTIs [s]
			ontime7	19951.011348188	Sum of GTIs [s]
			l1events	1270116	Number of level 1 events

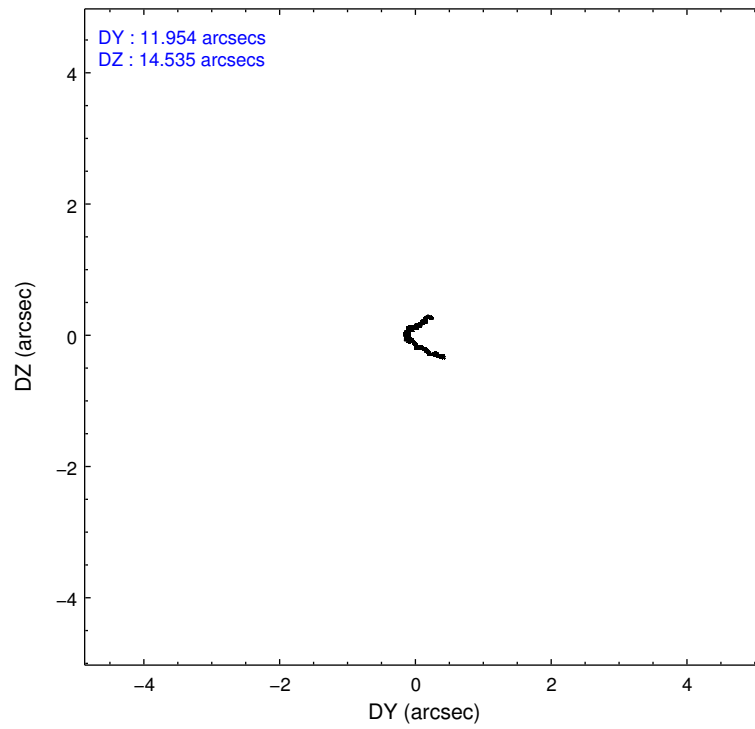
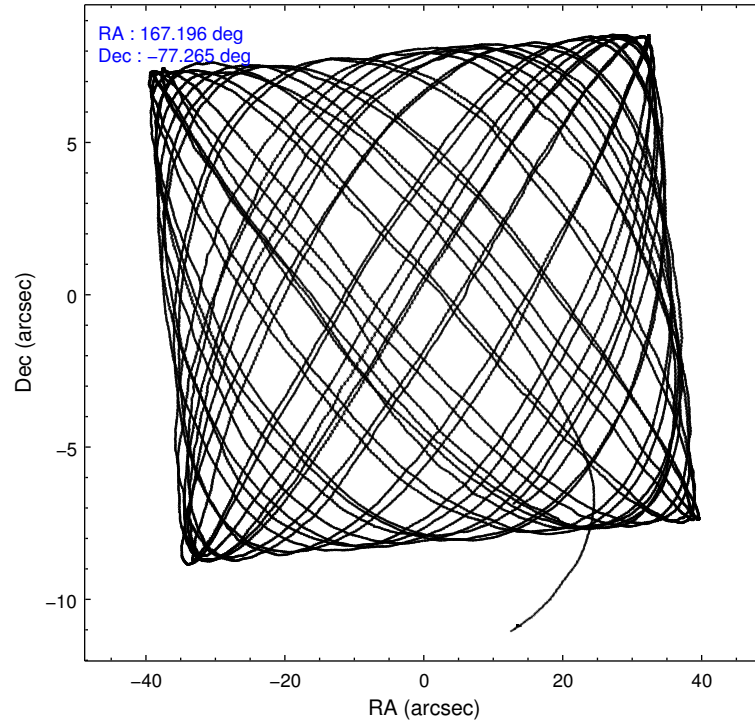
2.1.4 Events

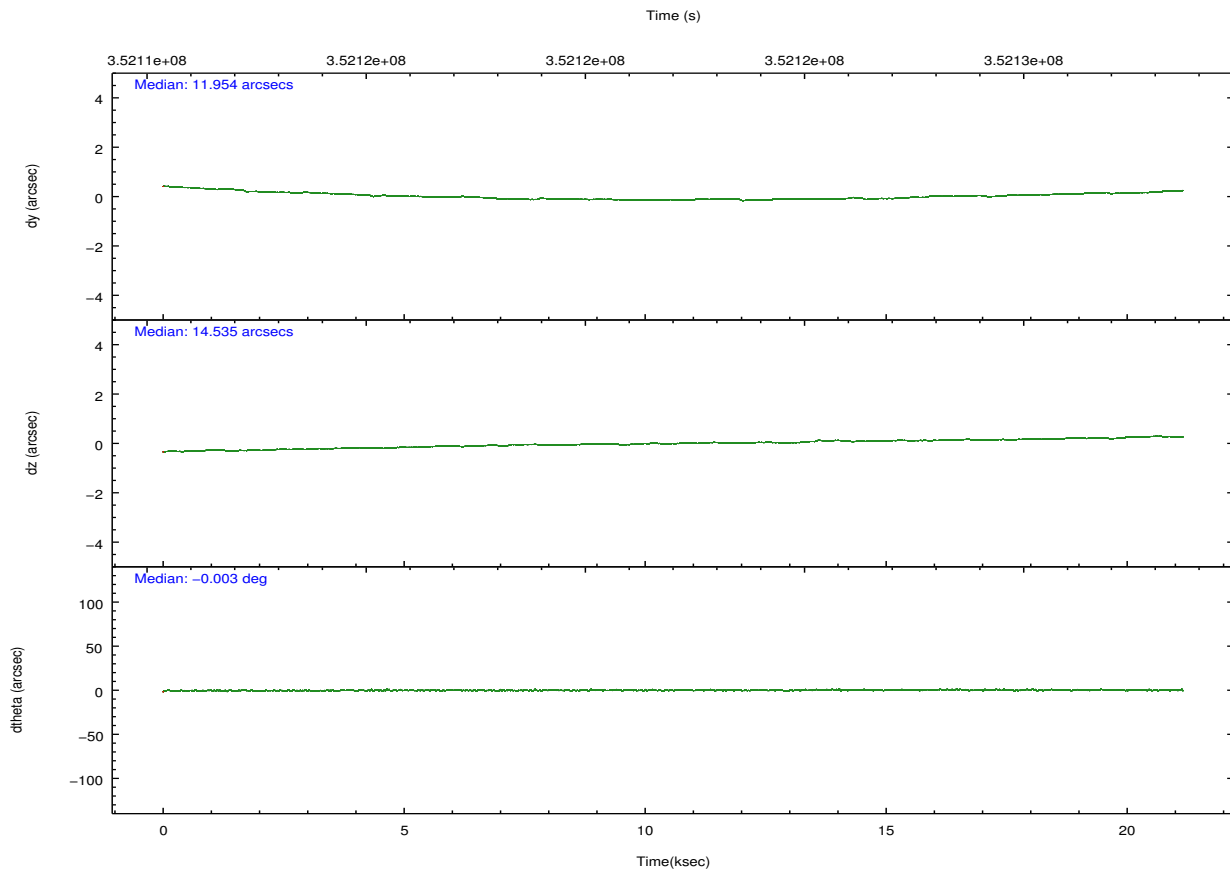
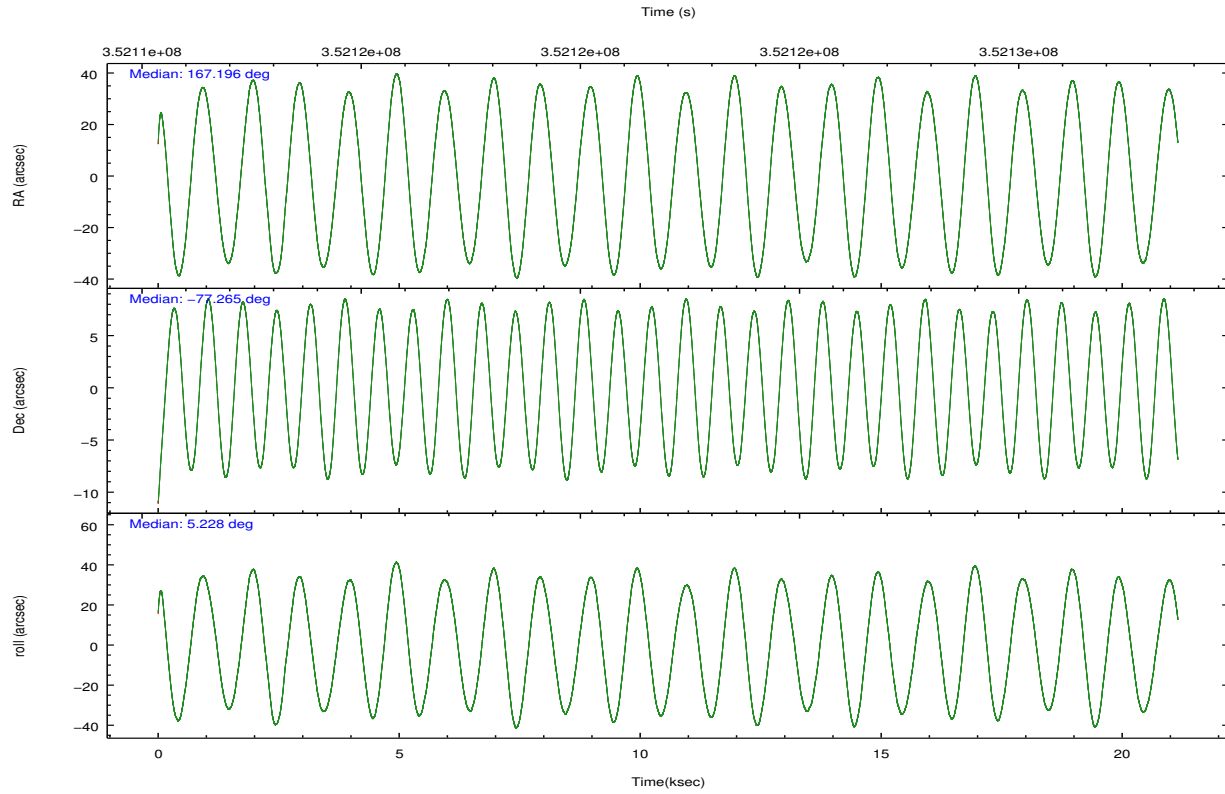
	ccd 0	ccd 1	ccd 2	ccd 3	ccd 6	ccd 7		ccd 0	ccd 1	ccd 2	ccd 3	ccd 6	ccd 7
level 1 events	183230	188583	202851	197428	214642	283382	grade 0 events	10516	10382	9815	10367	9568	9631
rejected events	157992	161659	179428	173345	189589	166748		5%	5%	4%	5%	4%	3%
rejected %	86%	85%	88%	87%	88%	58%	grade 1 events	109	120	126	139	130	312
								0%	0%	0%	0%	0%	0%
							grade 2 events	5721	6438	5091	4868	5607	23920
								3%	3%	2%	2%	2%	8%
							grade 3 events	2373	2402	2243	2331	2368	9584
								1%	1%	1%	1%	1%	3%
							grade 4 events	2154	2380	2126	2258	2298	9675
								1%	1%	1%	1%	1%	3%
							grade 5 events	8572	9070	8499	9664	10222	26853
								4%	4%	4%	4%	4%	9%
							grade 6 events	4477	5325	4155	4263	5215	63842
								2%	2%	2%	2%	2%	22%
							grade 7 events	149308	152466	170796	163538	179234	139565
								81%	80%	84%	82%	83%	49%

2.2 Compared Parameters

Parameter	Planned	Actual	Parameter	Planned	Actual
Instrument	ACIS	ACIS	Obspar format version number	7	7
Detector	ACIS-012367	ACIS-012367	Obspar file type	PREDICTED	ACTUAL
Grating	NONE	NONE	Obspar update status	NONE	UPDATED
Data mode	FAINT	FAINT	Number of optional ACIS chips dropped	0	0
Observation mode	POINTING	POINTING	On-chip summing requested	N	N
[deg] Pointing RA	167.095092	167.1968256199689	Subarray requested	NONE	NONE
[deg] Pointing Dec	-77.280687	-77.26473064114046	Alternating exposures requested	N	N
[deg] Pointing Roll	4.933837	5.241757134213304	[s] Primary exposure time	0.000000	3.2
[mm] SIM focus pos	-0.782348	-0.7809083437167272			
[mm] SIM defocus	0	0.001439871863259334			
[mm] SIM translation stage pos	-233.592463	-233.5874344608287			
[mm] SIM translation stage offset	0	-0.005018542100998502			
[s] Observation start time (MET)	352112581.184000	352110611.89317			
Observation start date	2009-02-27T09:01:55	2009-02-27T08:30:11			
[s] Observation end time (MET)	352132581.184000	352133269.00679			
Observation end date	2009-02-27T14:35:15	2009-02-27T14:47:49			
Read mode	TIMED	TIMED			

2.3 Aspect



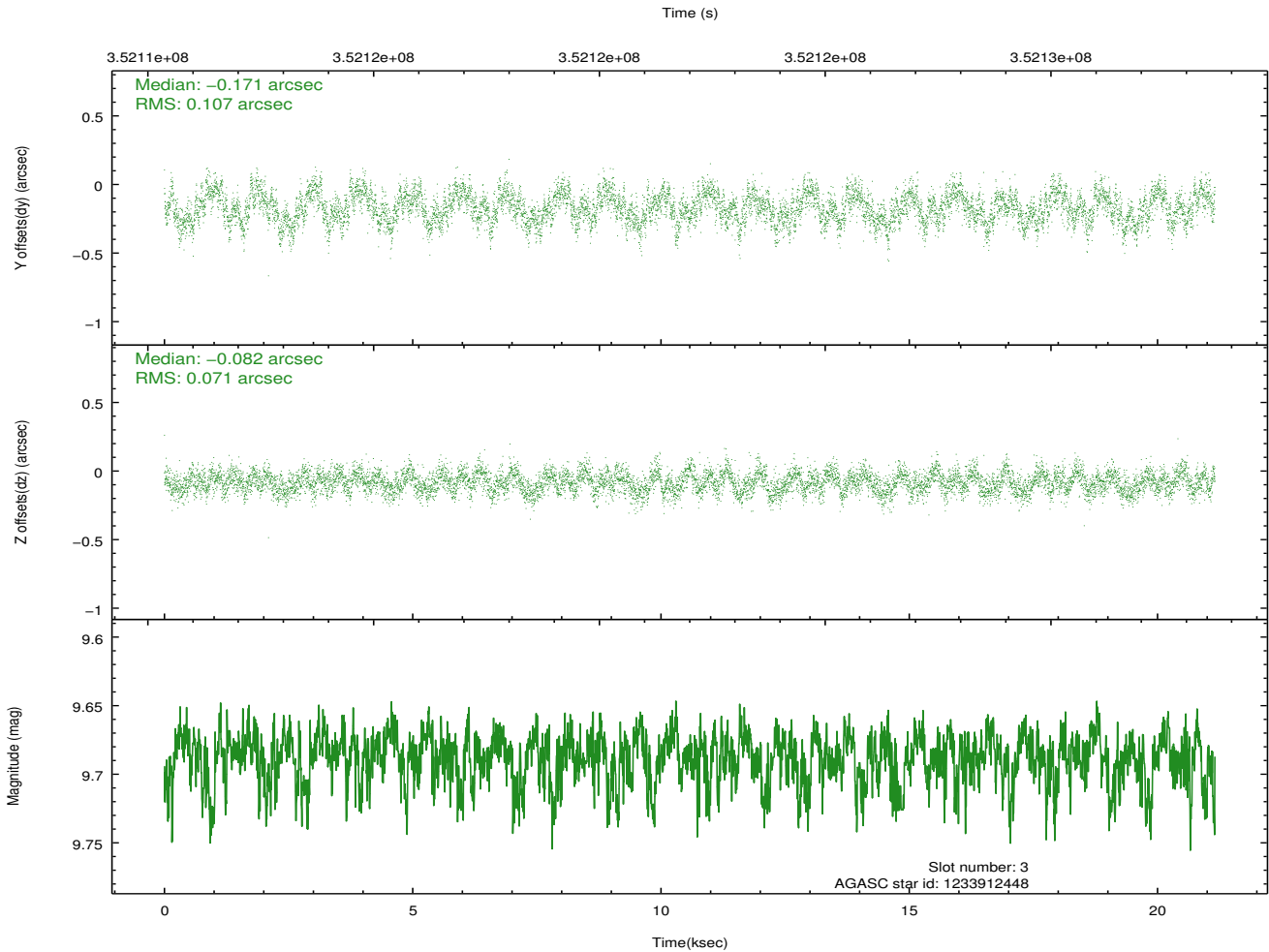
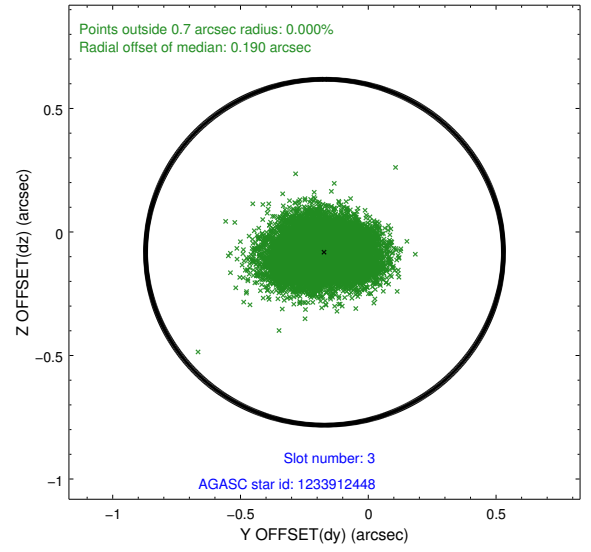
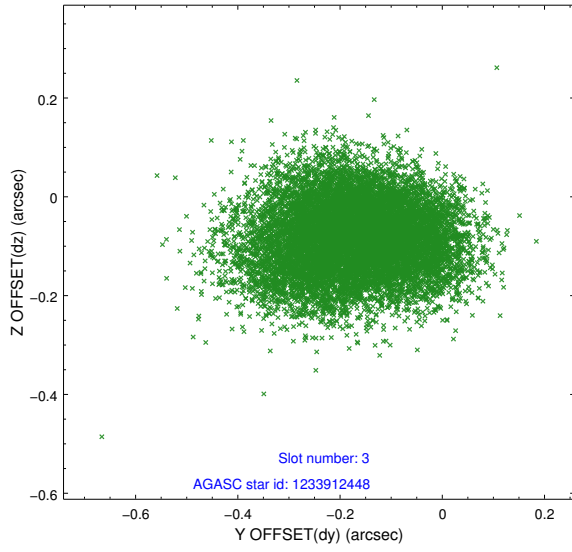


Slot Statistics

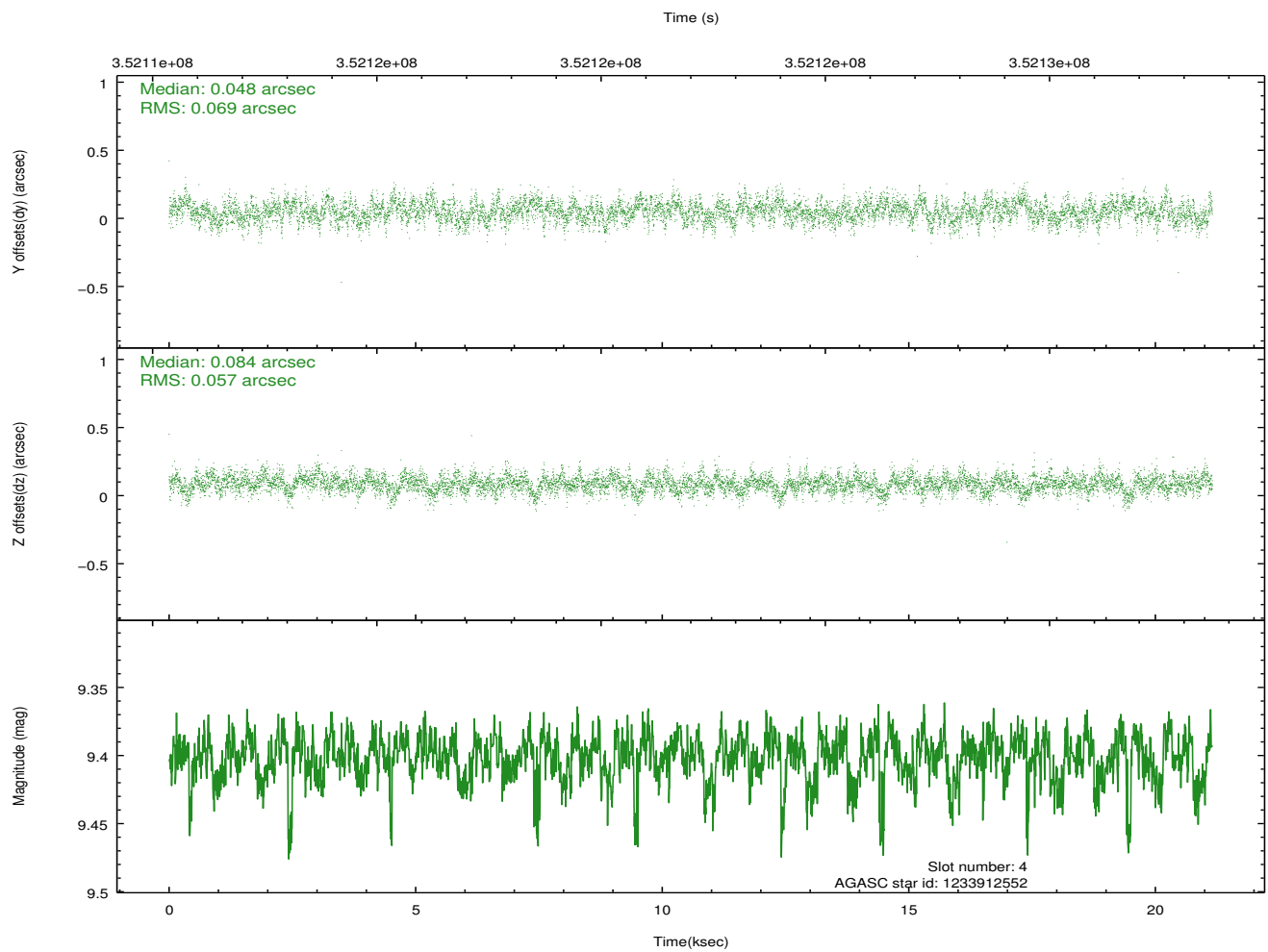
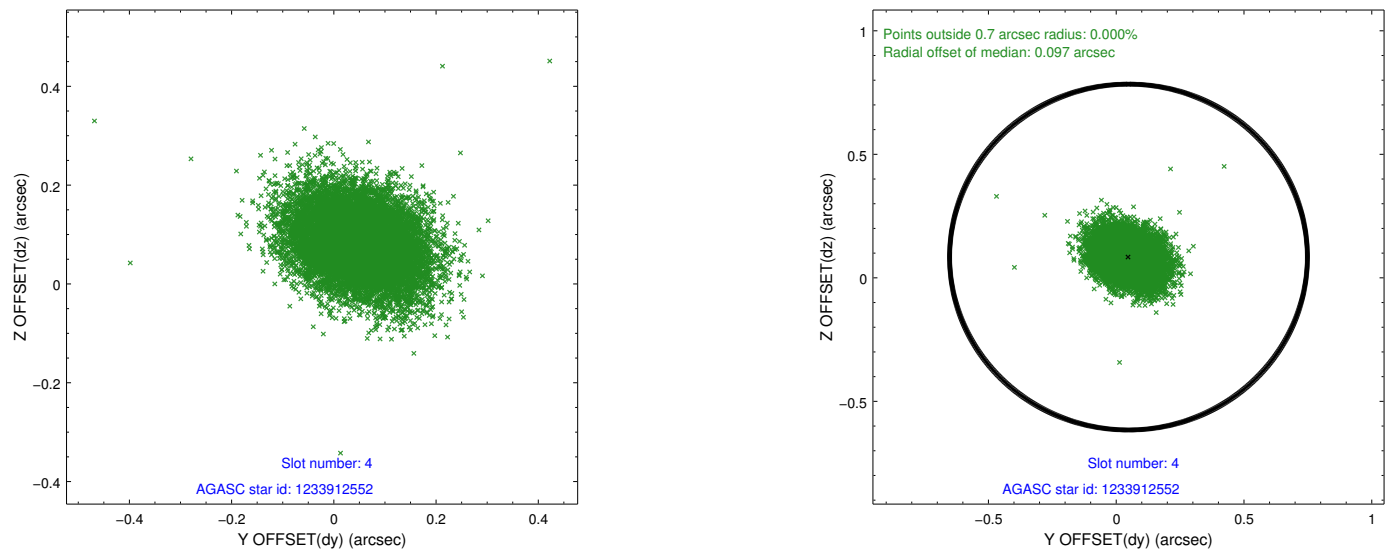
slot	status	id	mag	n_pts	med_dy	med_dz	dr1	dr2	ra	dec	mean_y	mean_z
0	FID	ACIS-I-1	7.02	5161	0.027	-0.002	0.009	0.024	0.000000	0.000000	927.60	-838.10
1	FID	ACIS-I-5	7.01	5161	-0.191	0.038	0.007	0.013	0.000000	0.000000	-1820.65	1059.31
2	FID	ACIS-I-6	7.02	5161	0.073	0.034	0.009	0.019	0.000000	0.000000	392.97	1704.02
3	GUIDE	1233912448	9.69	10302	-0.171	-0.082	0.137	0.219	169.582957	-77.121294	2034.16	358.25
4	GUIDE	1233912552	9.40	10301	0.048	0.084	0.094	0.156	169.875278	-77.654227	2012.07	-1573.68
5	GUIDE	1233913328	9.46	10289	0.001	-0.100	0.094	0.156	168.791214	-77.037709	1438.38	734.00
6	GUIDE	1233913352	9.31	10315	0.193	0.212	0.127	0.191	165.333422	-77.603525	-1457.46	-1060.99
7	GUIDE	1233409960	9.09	10315	-0.070	-0.109	0.095	0.151	167.458448	-76.613256	508.00	2366.68

2.4 Star Slots

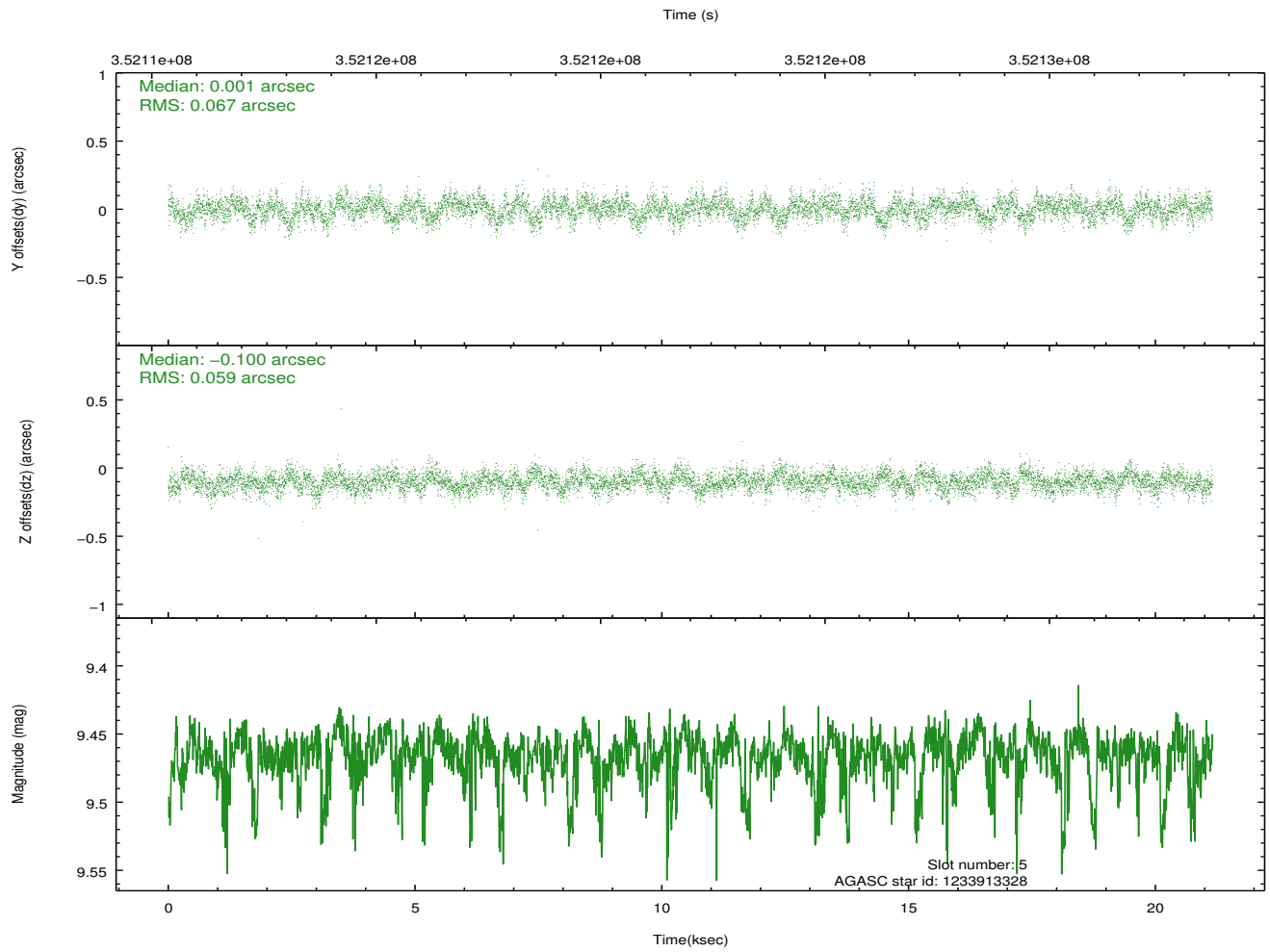
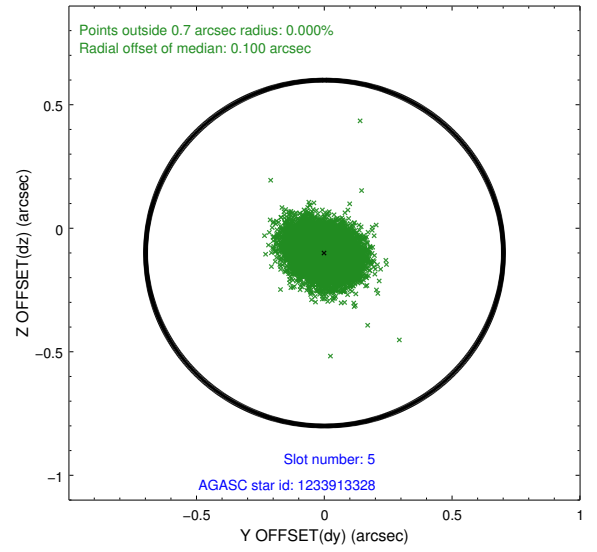
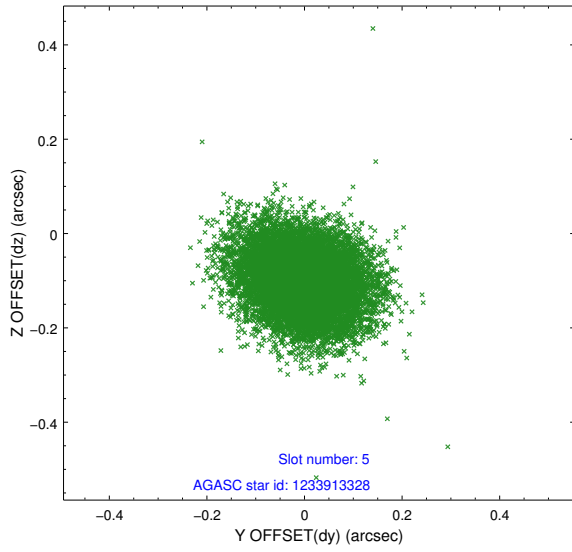
2.4.1 Slot 3



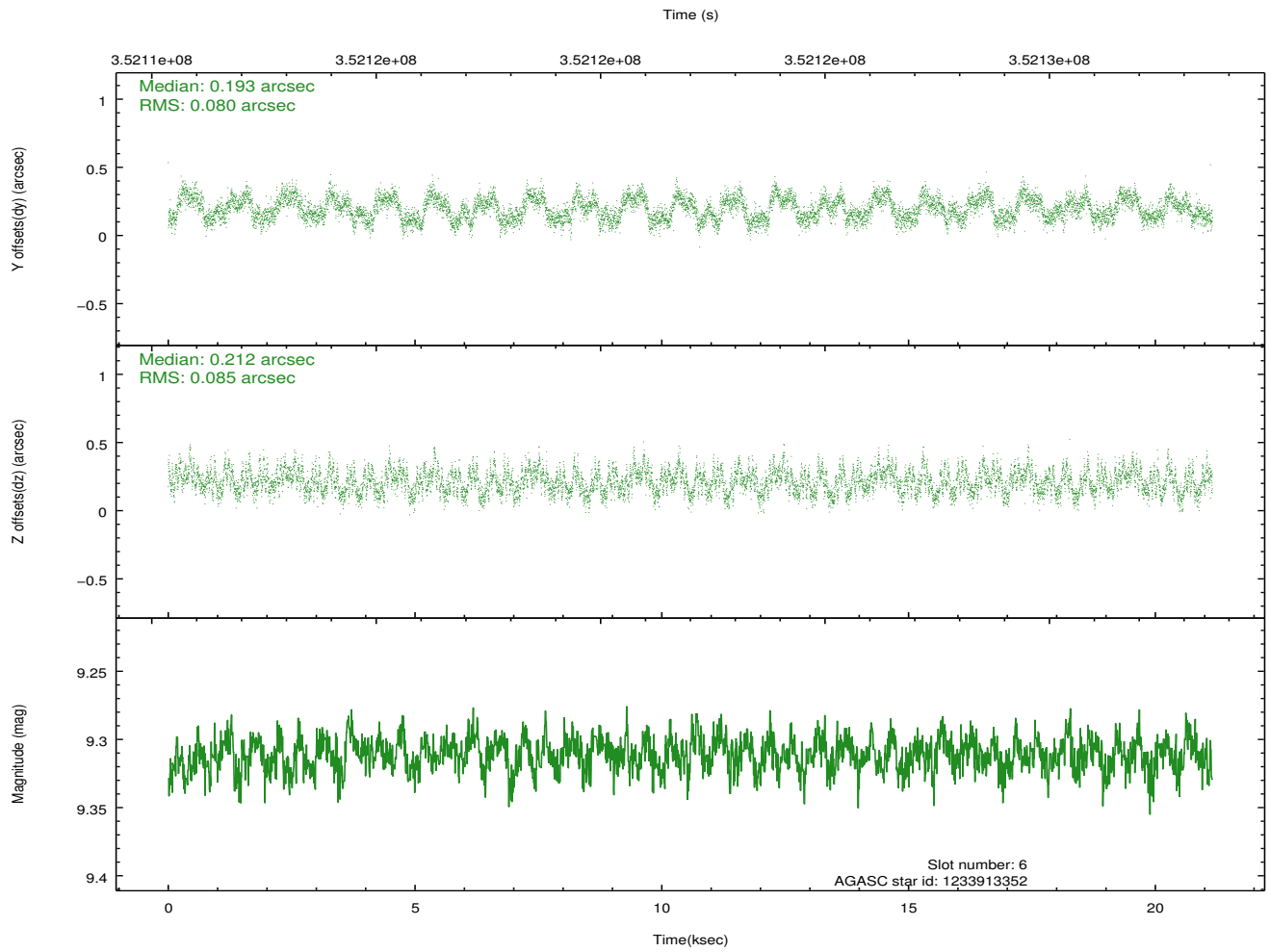
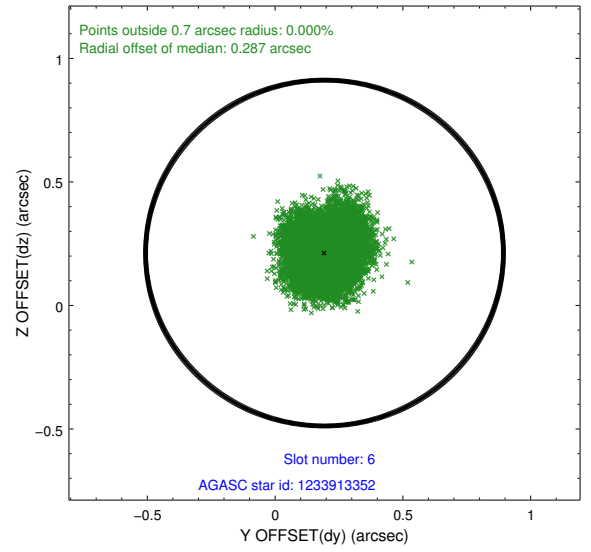
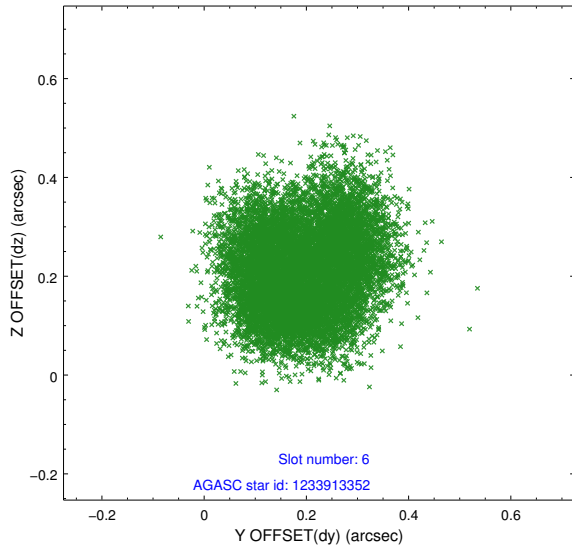
2.4.2 Slot 4



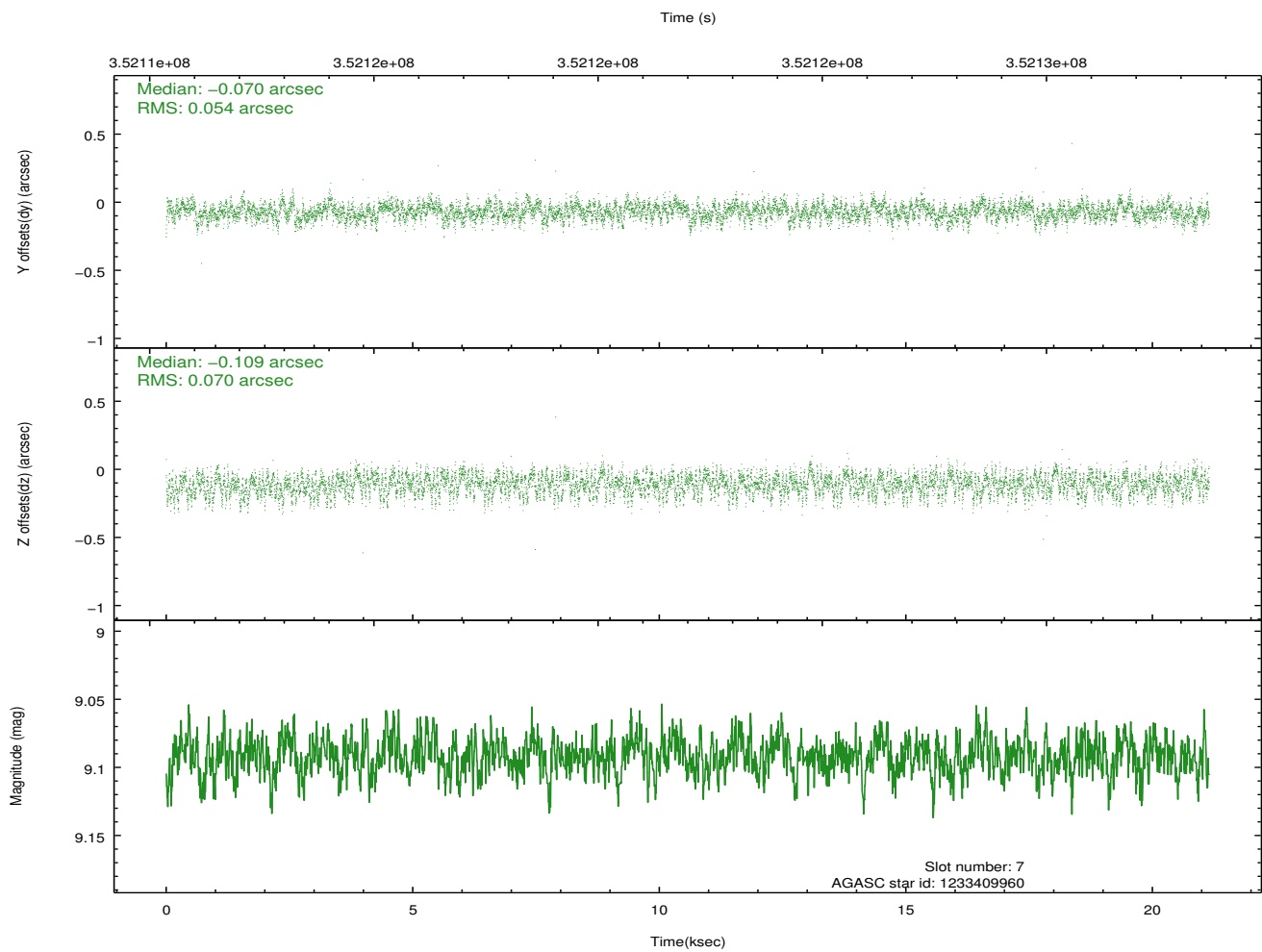
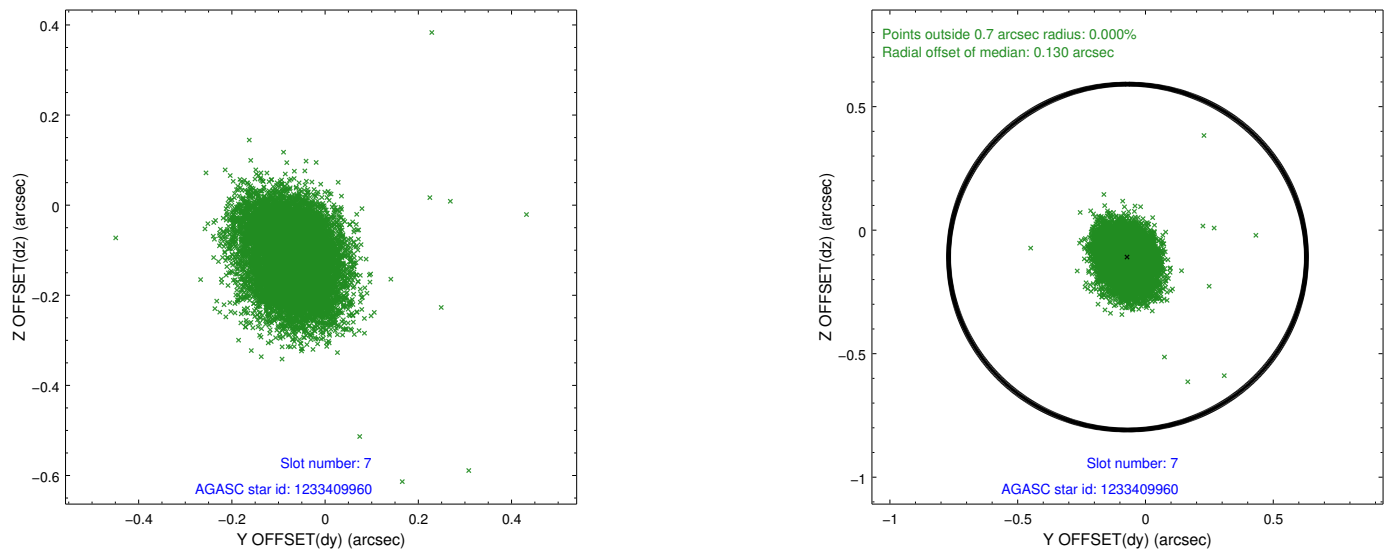
2.4.3 Slot 5



2.4.4 Slot 6

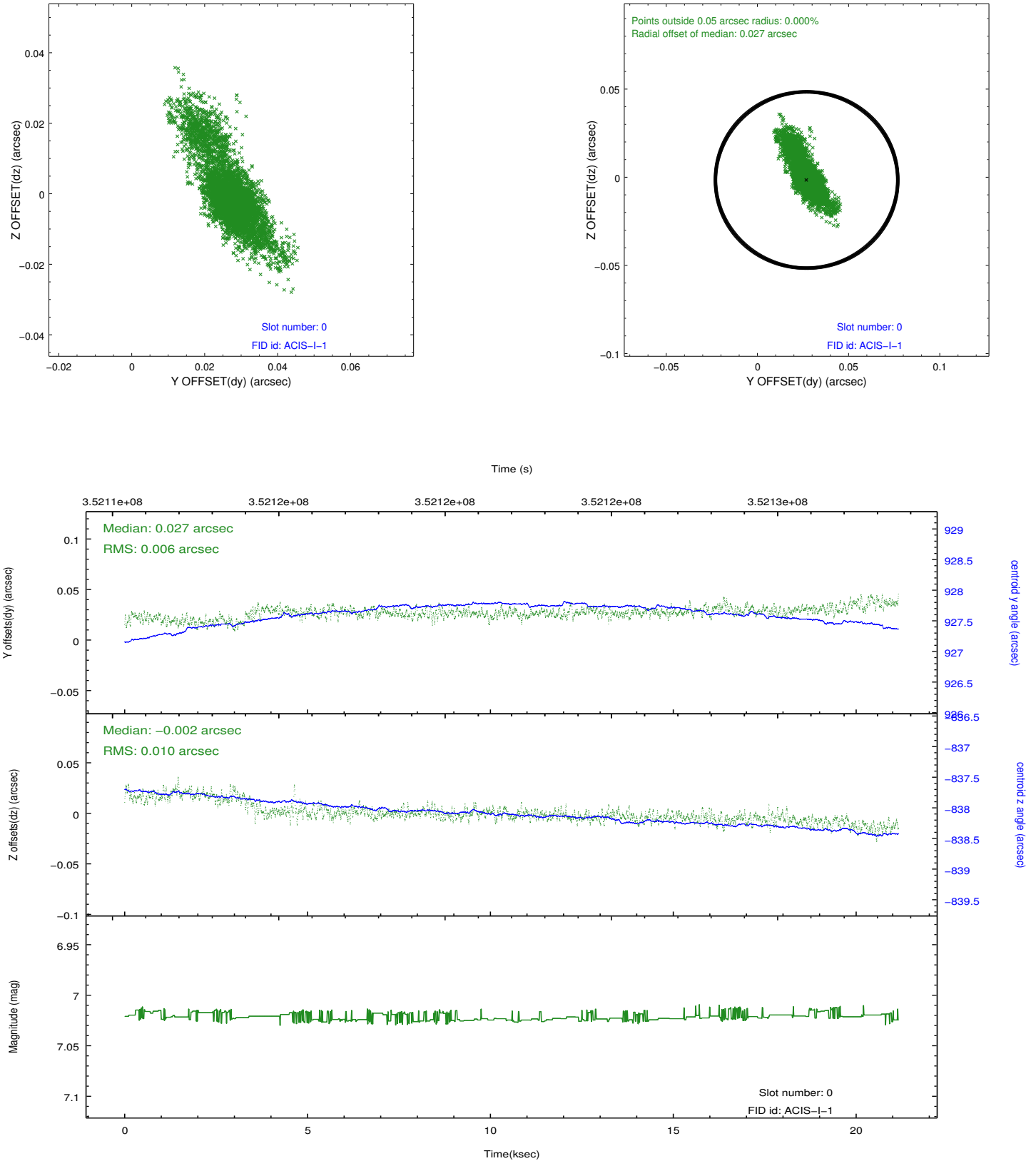


2.4.5 Slot 7

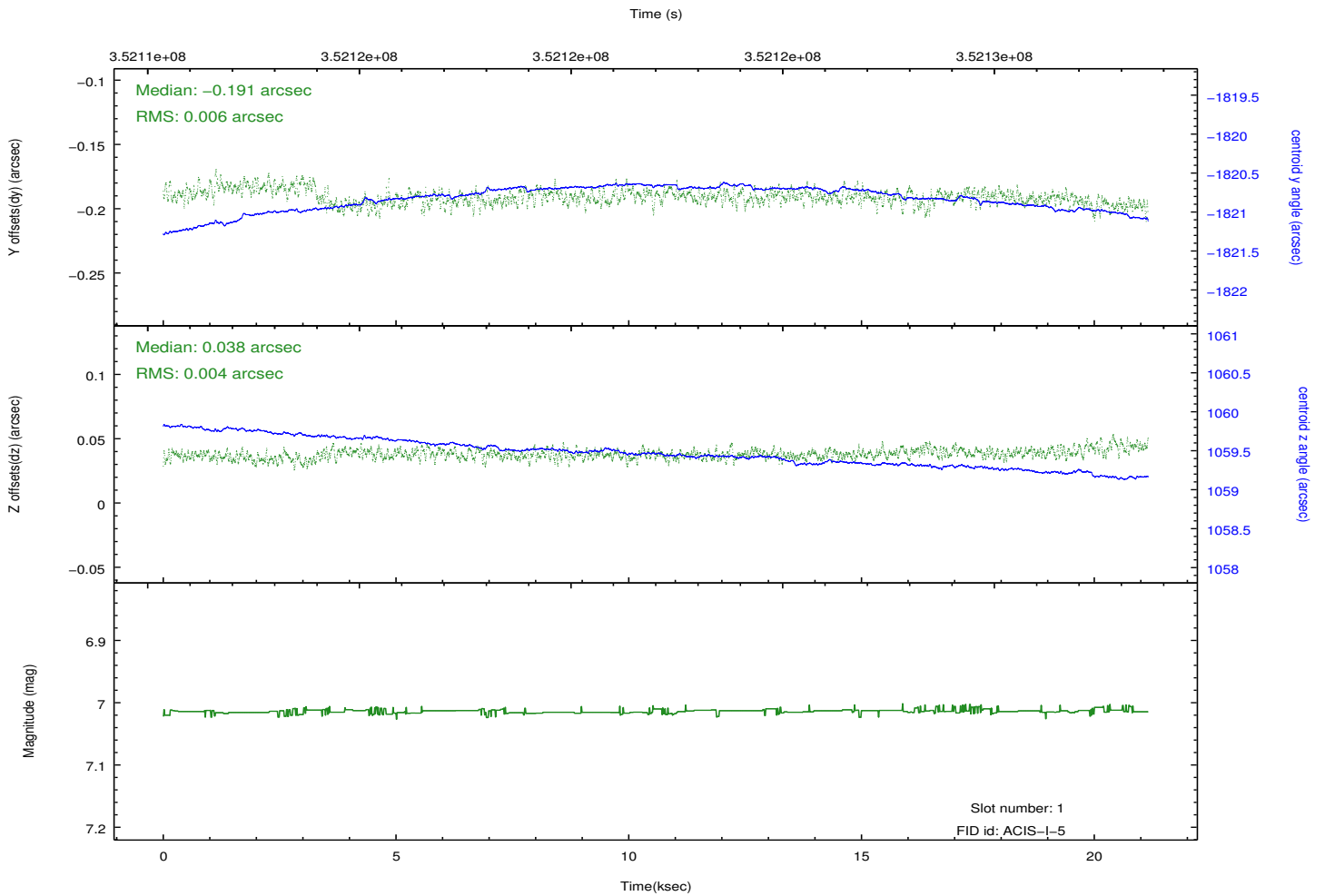
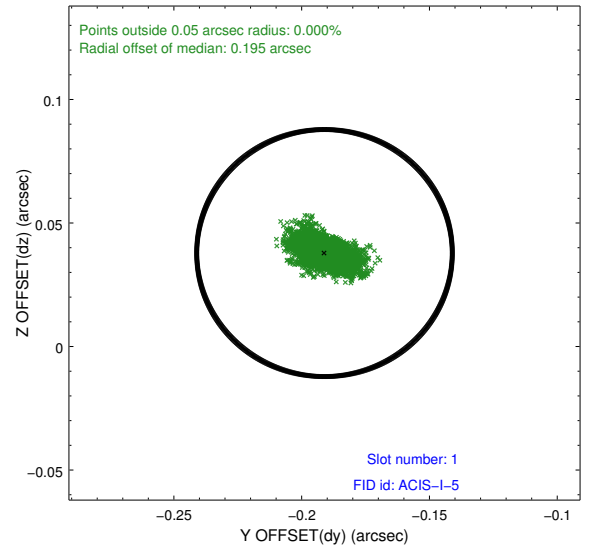
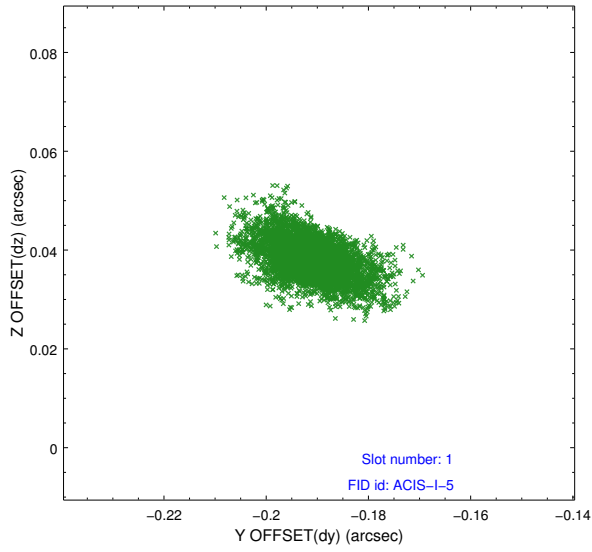


2.5 FID Slots

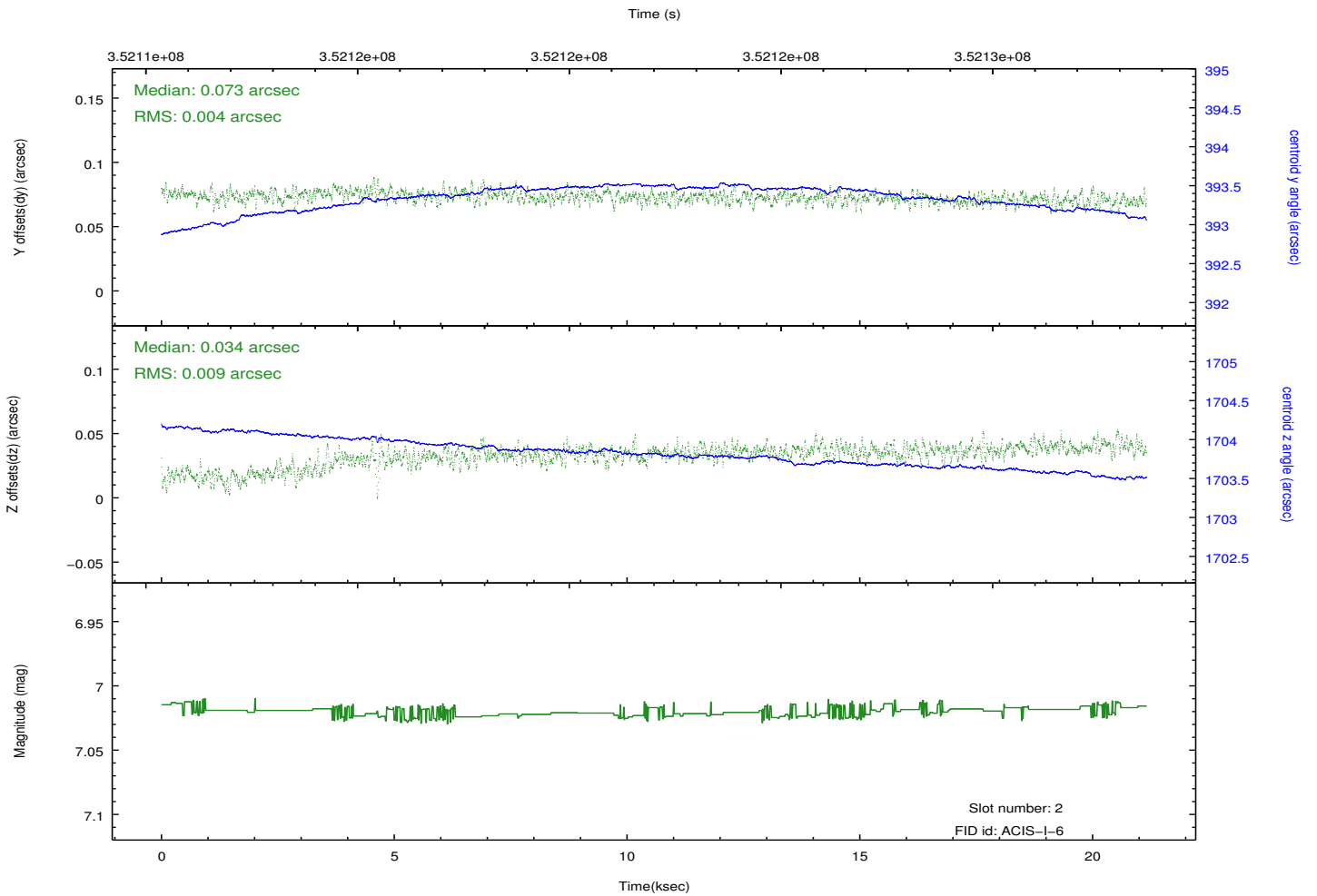
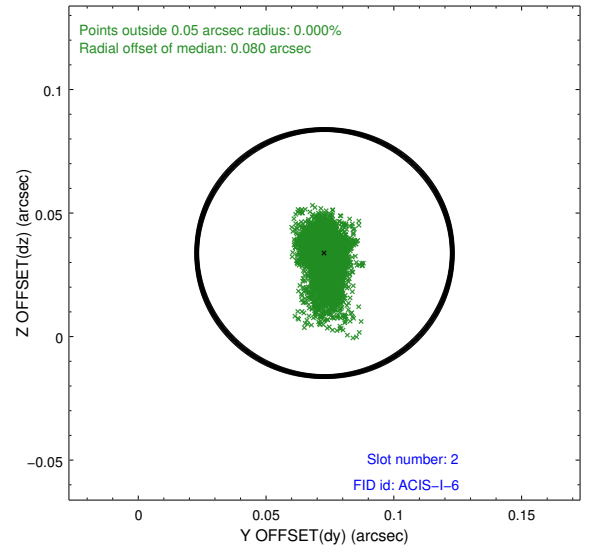
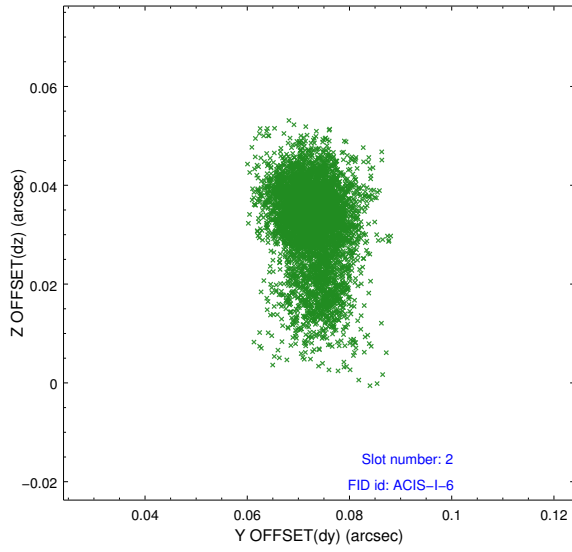
2.5.1 Slot 0



2.5.2 Slot 1



2.5.3 Slot 2



A Summary

A.1 Status

V&V Scientist	Jen Lauer
V&V Date (YYYY-MM-DD)	2012.06.06
V&V Edition	1
V&V Disposition and Status	OK
V&V Charge Time	19.9487999

A.2 Comments

Joint Proposal: CX0-Spitzer