

V&V Reference Report

L2 ASCDS Version : 8.4.4

Observation 8693 - L2 Version 2
Chandra X-Ray Center

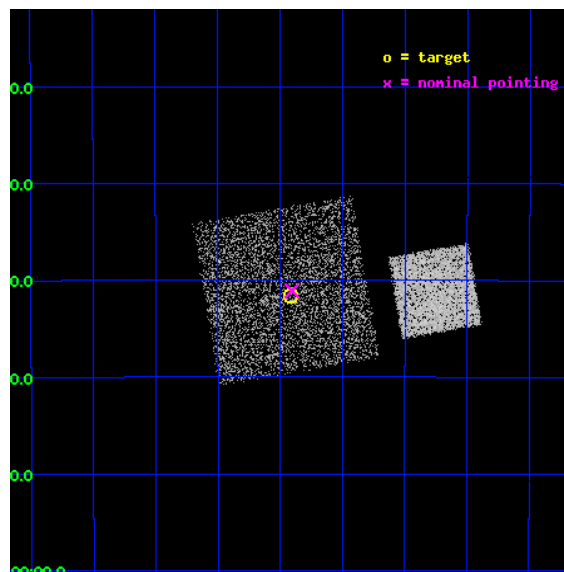
L2 Processing Date : May 15 2012

Contents

1	Front	2
2	OBI	3
2.1	OBI	3
2.1.1	Images	3
2.1.2	Bias	3
2.1.3	Parameters	4
2.1.4	Events	4
2.2	Compared Parameters	5
2.3	Aspect	6
2.4	Star Slots	9
2.4.1	Slot 3	9
2.4.2	Slot 4	10
2.4.3	Slot 5	11
2.4.4	Slot 6	12
2.4.5	Slot 7	13
2.5	FID Slots	14
2.5.1	Slot 0	14
2.5.2	Slot 1	15
2.5.3	Slot 2	16
A	Summary	17
A.1	Status	17
A.2	Comments	17

1 Front

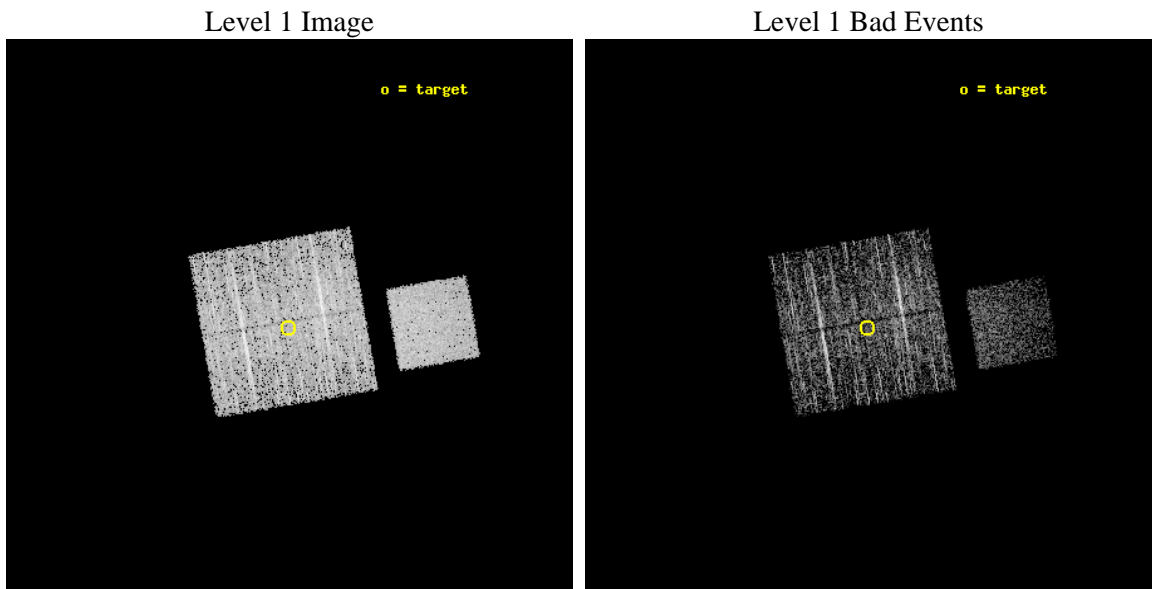
seq_num	400744	Sequence number
obs_id	8693	Observation id
title	The Galactic Bulge Survey: categorising the plethora of faint X-ray sources in the Galactic Bulge	Proposal title
observer	Prof Mariano Mendez	Principal investigator
object	GBSGTO5	Source name
dtcycle	0	
cycle	P	events from which exps? Prim/Second/Both
ra_targ	264.227916	Observer's specified target RA [deg]
dec_targ	-29.526442	Observer's specified target Dec [deg]
ra_nom	264.22663354209	Nominal RA [deg]
dec_nom	-29.518328417558	Nominal Dec [deg]
roll_nom	80.208070840015	Nominal Roll [deg]
revision	2	Processing version of data
ontime	2185.4590164423	Sum of GTIs [s]
livetime	2156.904385481	Livetime [s]
ontime0	2188.6000168324	Sum of GTIs [s]
ontime1	2185.4590165019	Sum of GTIs [s]
ontime2	2188.6000168324	Sum of GTIs [s]
ontime3	2185.4590164423	Sum of GTIs [s]
ontime7	2188.6000168324	Sum of GTIs [s]
l2events	15842	Number of level 2 events



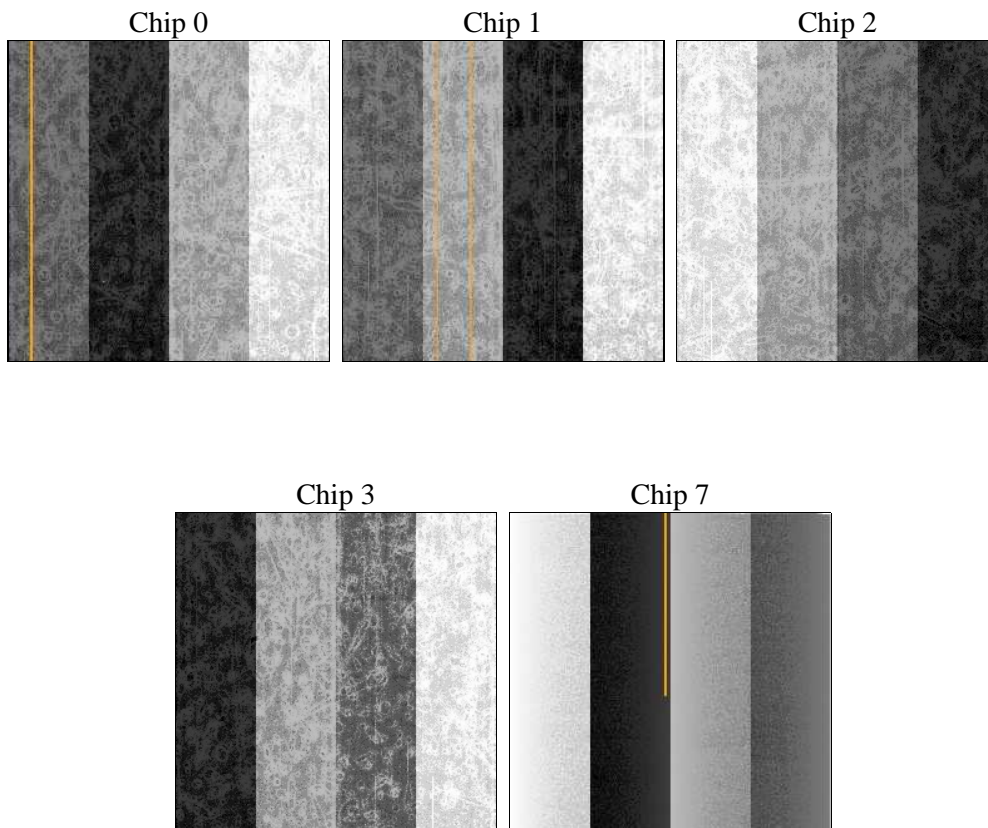
2 OBI

2.1 OBI

2.1.1 Images



2.1.2 Bias



2.1.3 Parameters

obi_num	1	Obi number	sched_exp_time	2000.000000	[s] Scheduled observation exposure time
ascdsver	8.4.4	Processing system revision	ontime	2185.4590164423	Sum of GTIs [s]
caldbver	4.4.9	 	ontime0	2188.6000168324	Sum of GTIs [s]
date	2012-05-15T04:52:07	Date and time of file creation	ontime1	2185.4590165019	Sum of GTIs [s]
revision	2	Processing version of data	ontime2	2188.6000168324	Sum of GTIs [s]
			ontime3	2185.4590164423	Sum of GTIs [s]
			ontime7	2188.6000168324	Sum of GTIs [s]
			l1events	102437	Number of level 1 events

2.1.4 Events

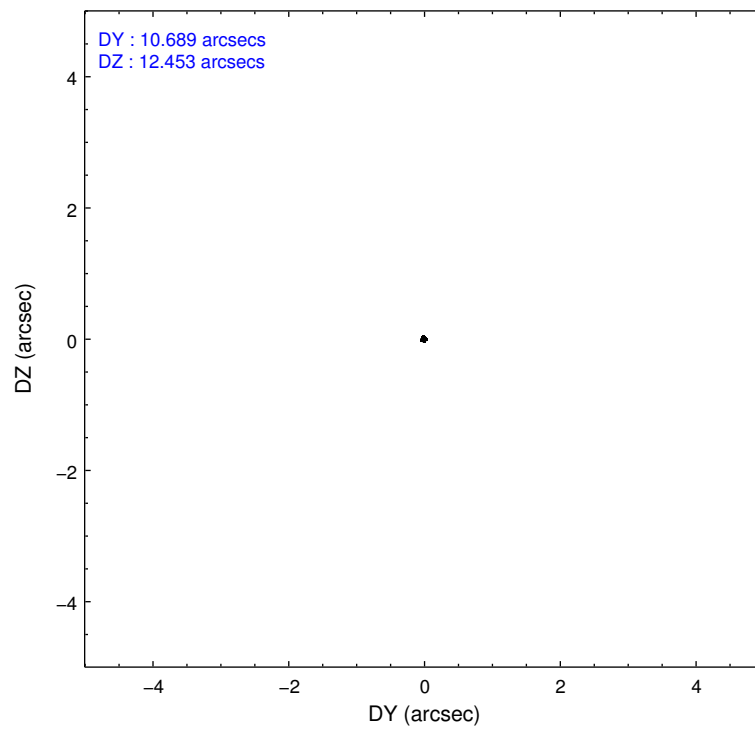
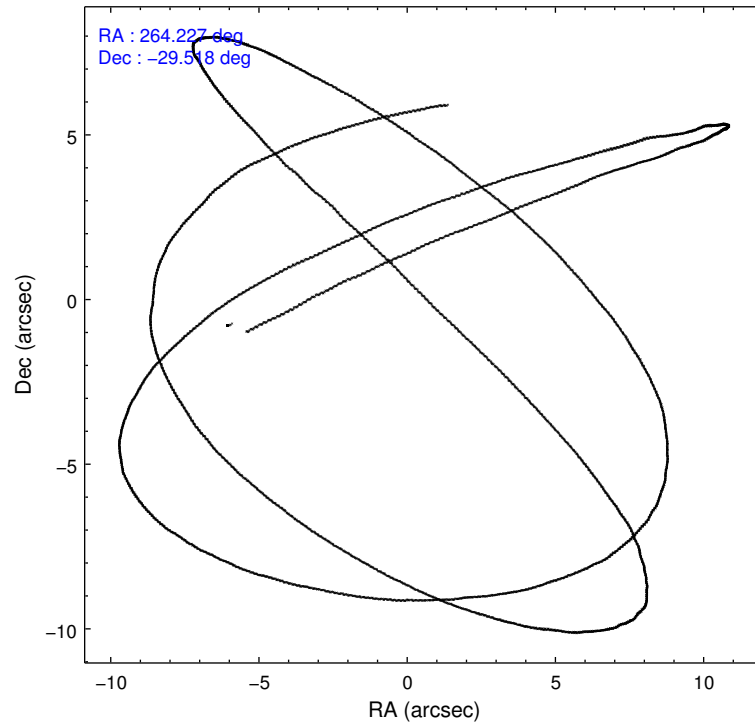
	ccd 0	ccd 1	ccd 2	ccd 3	ccd 7
level 1 events	19147	19390	21096	20216	22588
rejected events	17033	17208	19144	18284	13333
rejected %	88%	88%	90%	90%	59%

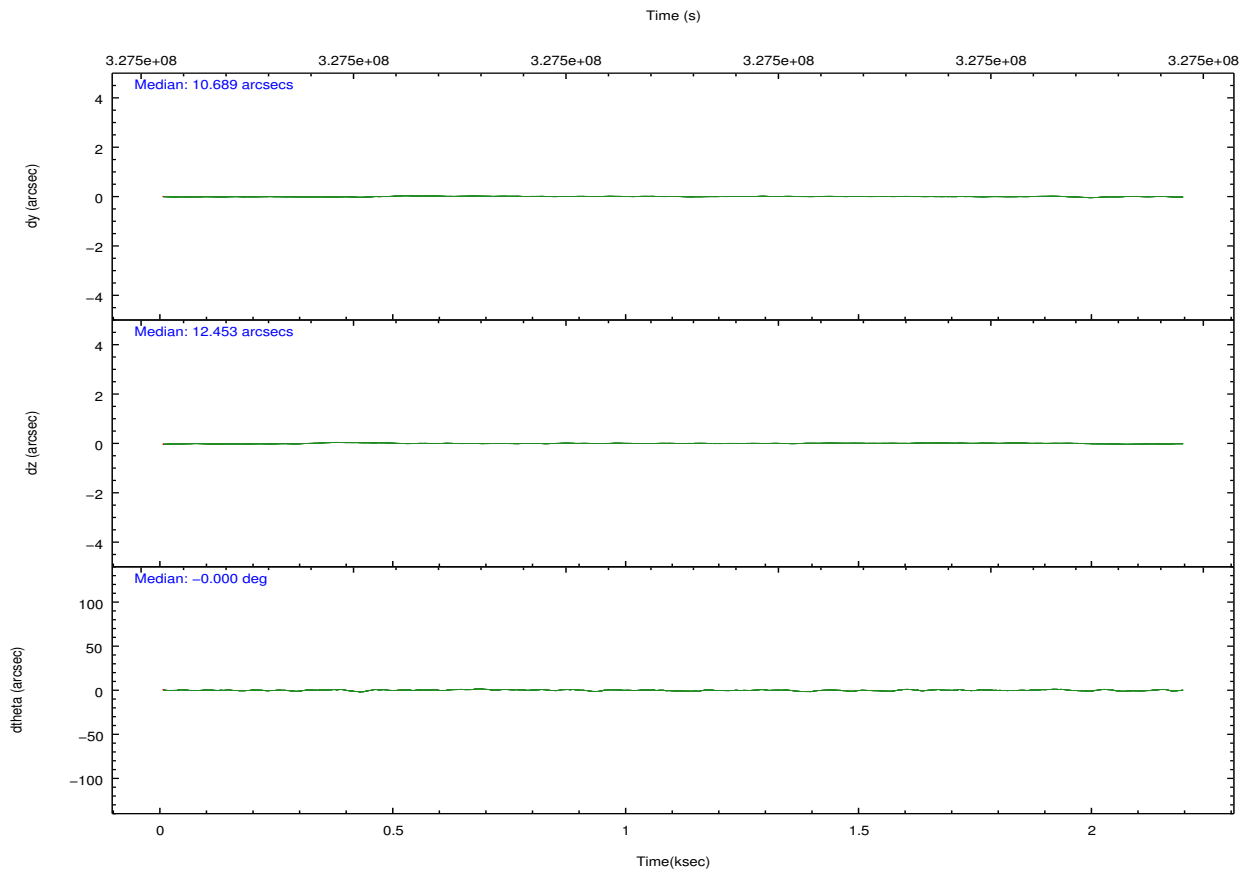
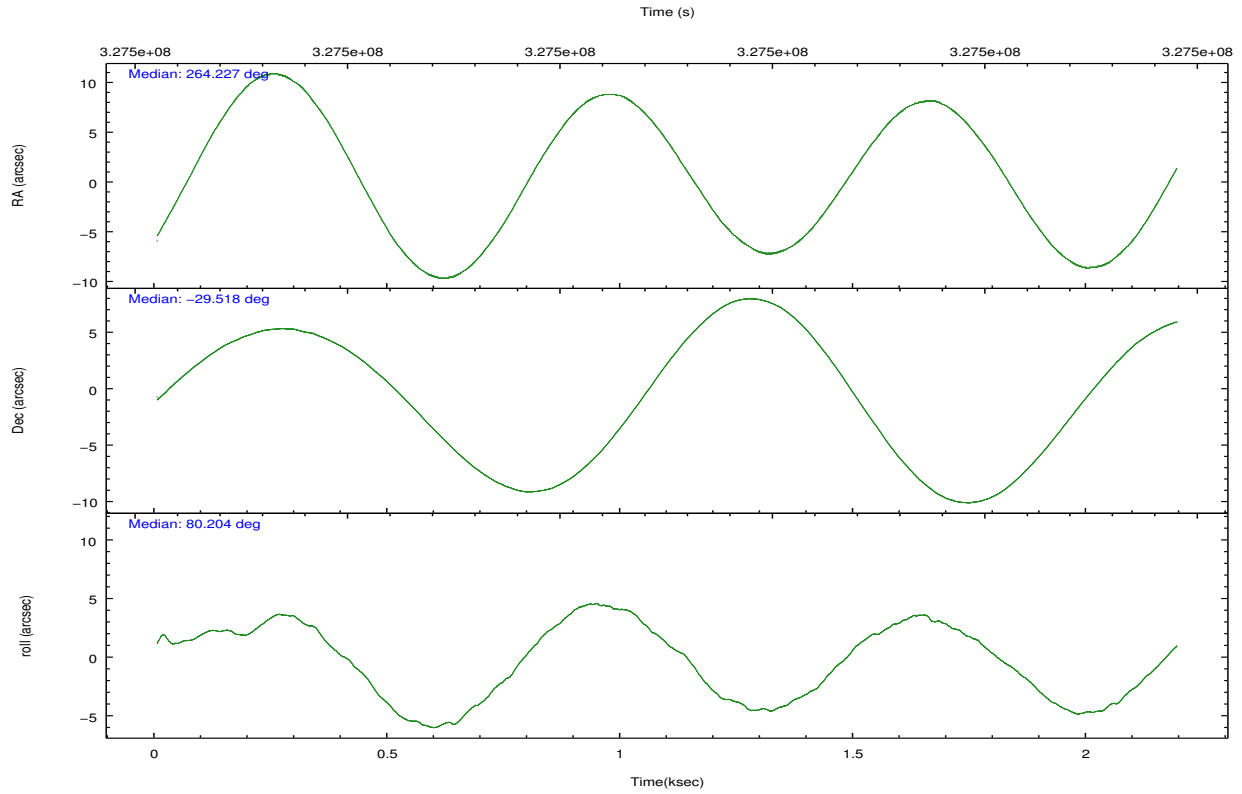
	ccd 0	ccd 1	ccd 2	ccd 3	ccd 7
grade 0 events	1004	995	925	923	971
	5%	5%	4%	4%	4%
grade 1 events	12	14	10	11	28
	0%	0%	0%	0%	0%
grade 2 events	546	523	485	432	2234
	2%	2%	2%	2%	9%
grade 3 events	241	234	215	218	1017
	1%	1%	1%	1%	4%
grade 4 events	221	241	218	221	968
	1%	1%	1%	1%	4%
grade 5 events	693	753	656	840	2278
	3%	3%	3%	4%	10%
grade 6 events	397	476	368	385	5347
	2%	2%	1%	1%	23%
grade 7 events	16033	16154	18219	17186	9745
	83%	83%	86%	85%	43%

2.2 Compared Parameters

Parameter	Planned	Actual	Parameter	Planned	Actual
Instrument	ACIS	ACIS	Obspar format version number	7	7
Detector	ACIS-01237	ACIS-01237	Obspar file type	PREDICTED	ACTUAL
Grating	NONE	NONE	Obspar update status	NONE	UPDATED
Data mode	VFAINT	VFAINT	CCD I0 on	Y	Y
Observation mode	POINTING	POINTING	CCD I1 on	Y	Y
[deg] Pointing RA	264.237739	264.2266335420912	CCD I2 on	Y	Y
[deg] Pointing Dec	-29.544202	-29.5183284175584	CCD I3 on	Y	Y
[deg] Pointing Roll	80.004845	80.20807084001461	CCD S0 on	N	N
[mm] SIM focus pos	-0.782348	-0.7809083437167272	CCD S1 on	N	N
[mm] SIM defocus	0	0.001439871863259334	CCD S2 on	N	N
[mm] SIM translation stage pos	-233.592463	-233.5874344608287	CCD S3 on	O1	Y
[mm] SIM translation stage offset	0	-0.005018542100998502	CCD S4 on	N	N
[s] Observation start time (MET)	327499844.184000	327499468.13448	CCD S5 on	N	N
Observation start date	2008-05-18T12:09:39	2008-05-18T12:04:28	Number of optional ACIS chips dropped	0	0
[s] Observation end time (MET)	327501844.184000	327501978.3596	On-chip summing requested	N	N
Observation end date	2008-05-18T12:42:59	2008-05-18T12:46:18	Subarray requested	NONE	NONE
Read mode	TIMED	TIMED	Alternating exposures requested	N	N
			[s] Primary exposure time	0.000000	3.1

2.3 Aspect





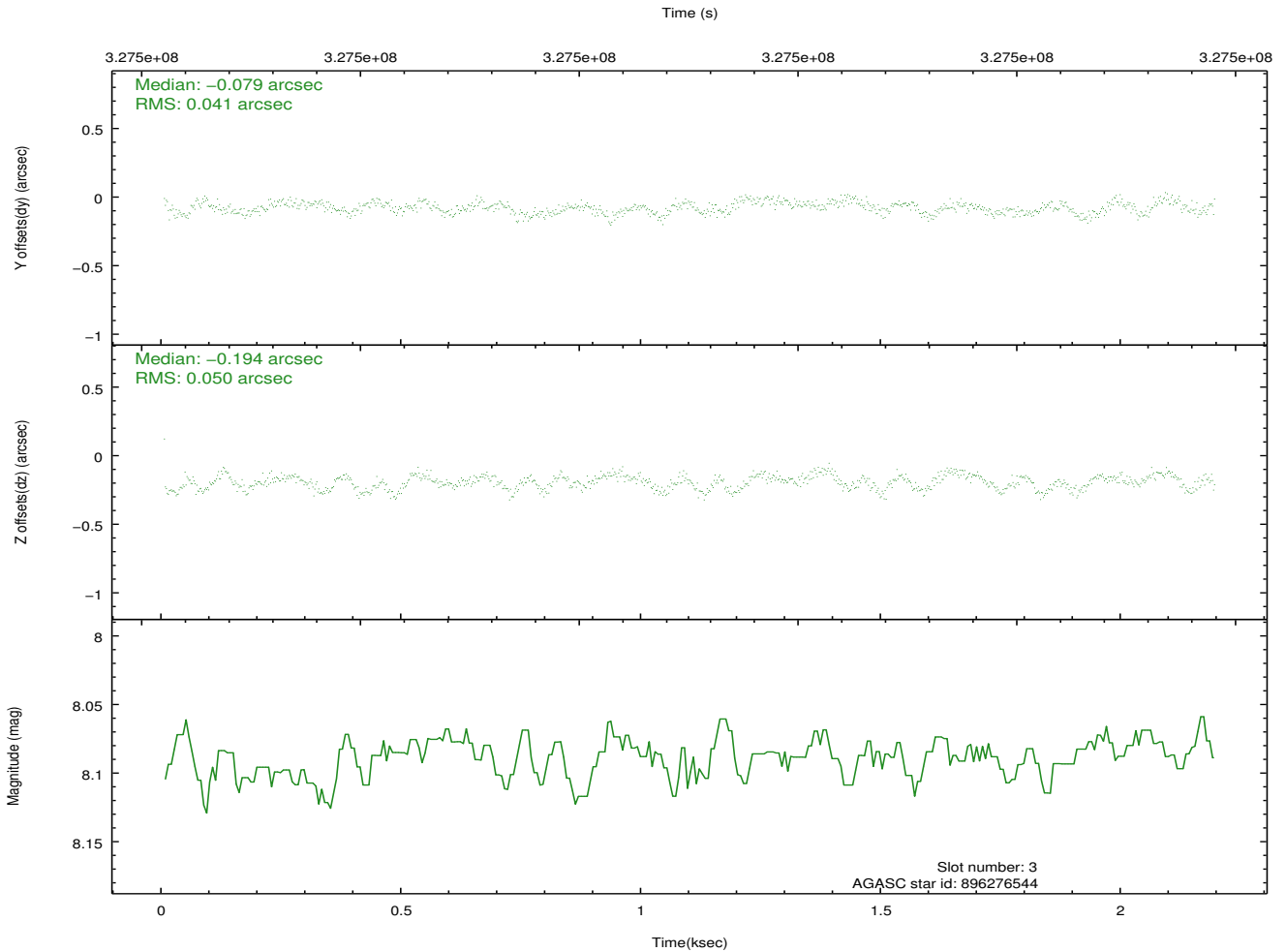
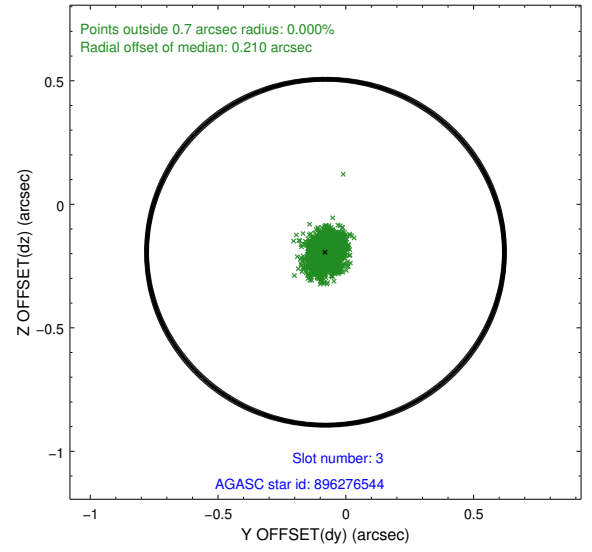
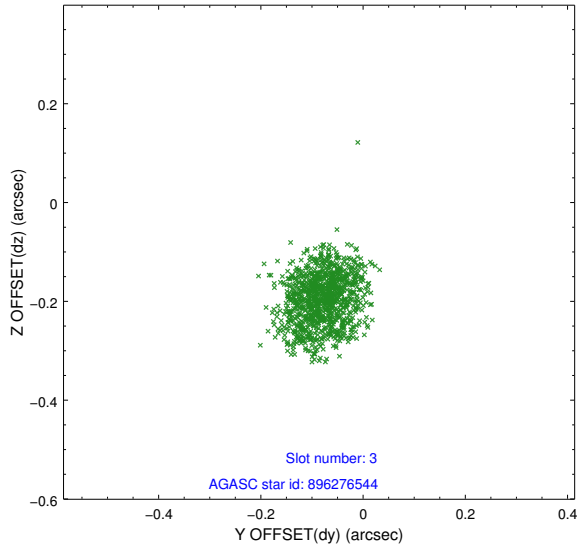
Slot Statistics

slot	status	id	mag	n_pts	med_dy	med_dz	dr1	dr2	ra	dec	mean_y	mean_z
0	FID	ACIS-I-2	6.95	535	-0.004	-0.063	0.010	0.019	0.000000	0.000000	-765.32	-842.38
1	FID	ACIS-I-5	7.04	535	-0.136	0.072	0.010	0.016	0.000000	0.000000	-1820.84	1060.14
2	FID	ACIS-I-6	7.05	535	0.046	0.059	0.007	0.011	0.000000	0.000000	391.30	1707.94
3	GUIDE	896276544	8.09	1069	-0.079	-0.194	0.071	0.107	263.666616	-29.255819	706.37	1945.70
4	GUIDE	896401864	7.87	1068	0.118	0.184	0.062	0.107	264.861768	-29.959752	-1139.91	-2175.60
5	GUIDE	896403072	8.33	1069	-0.169	-0.058	0.058	0.098	263.956439	-28.943077	1974.86	1246.11
6	GUIDE	896404376	6.68	1069	-0.078	0.133	0.059	0.098	264.835179	-29.530972	368.71	-1834.36
7	GUIDE	966794640	9.34	1067	0.205	-0.057	0.075	0.124	263.854004	-30.029028	-1928.13	872.54

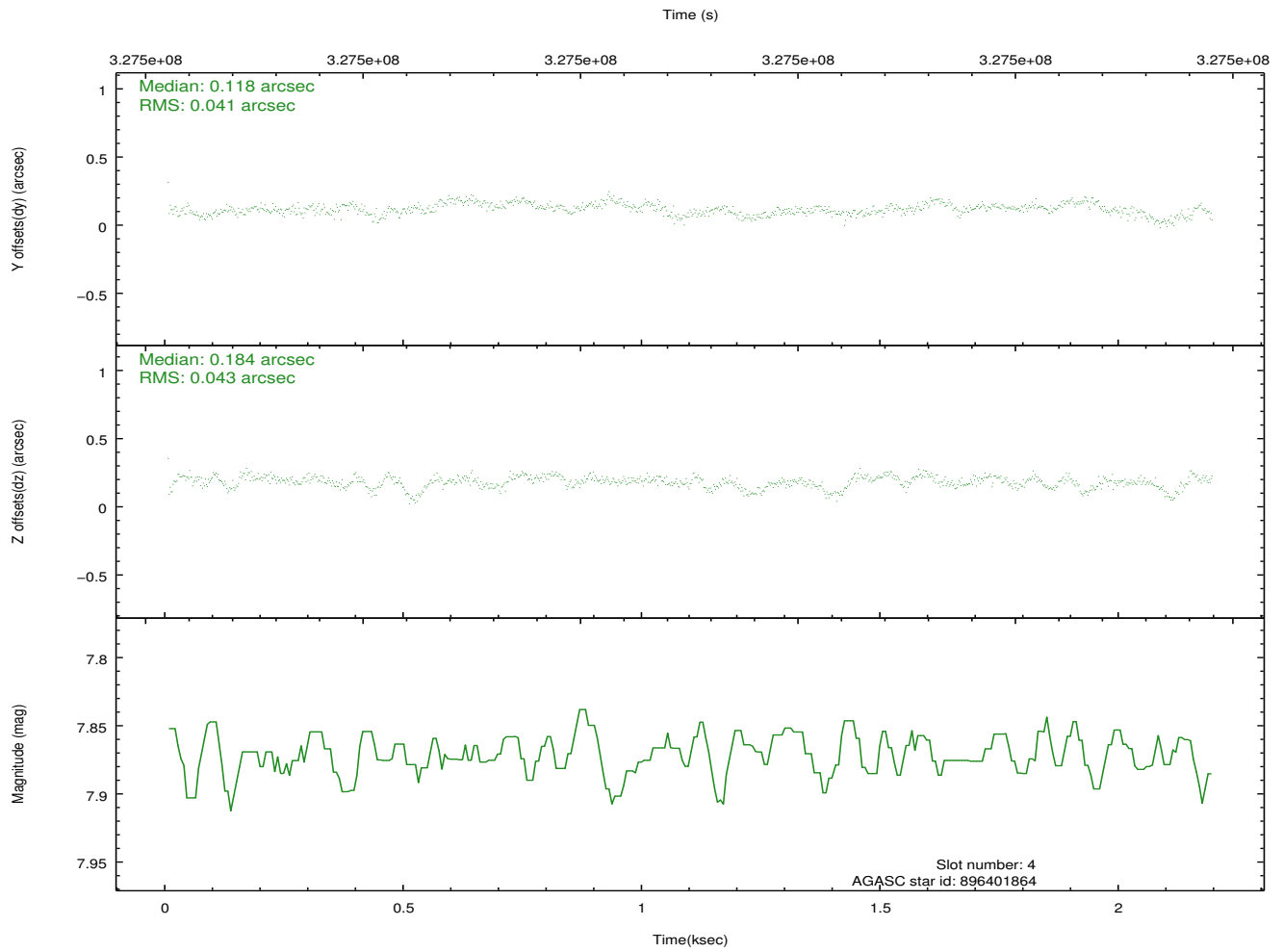
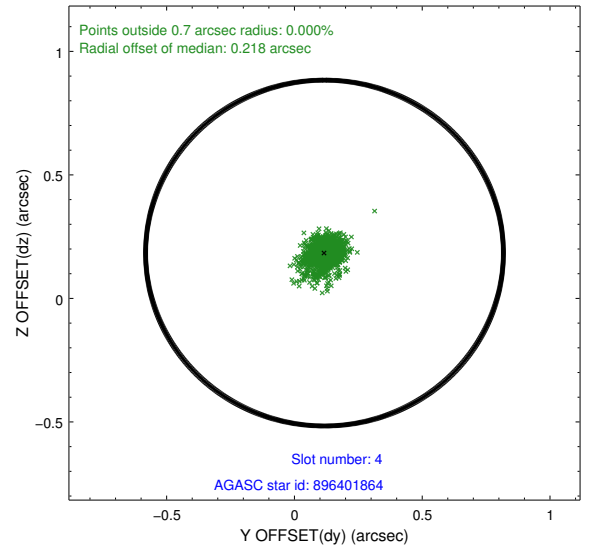
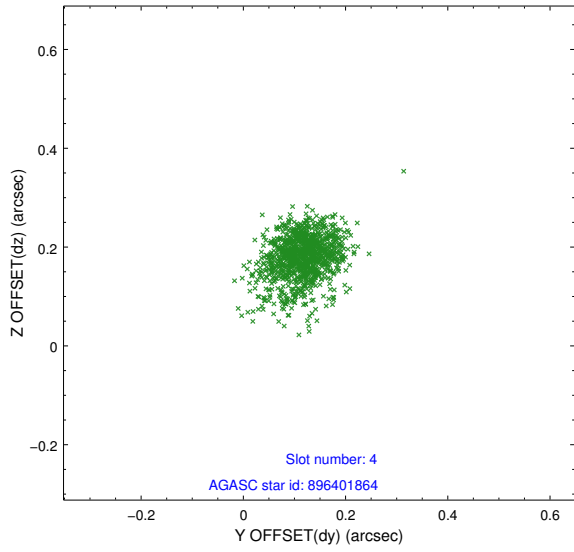
∞

2.4 Star Slots

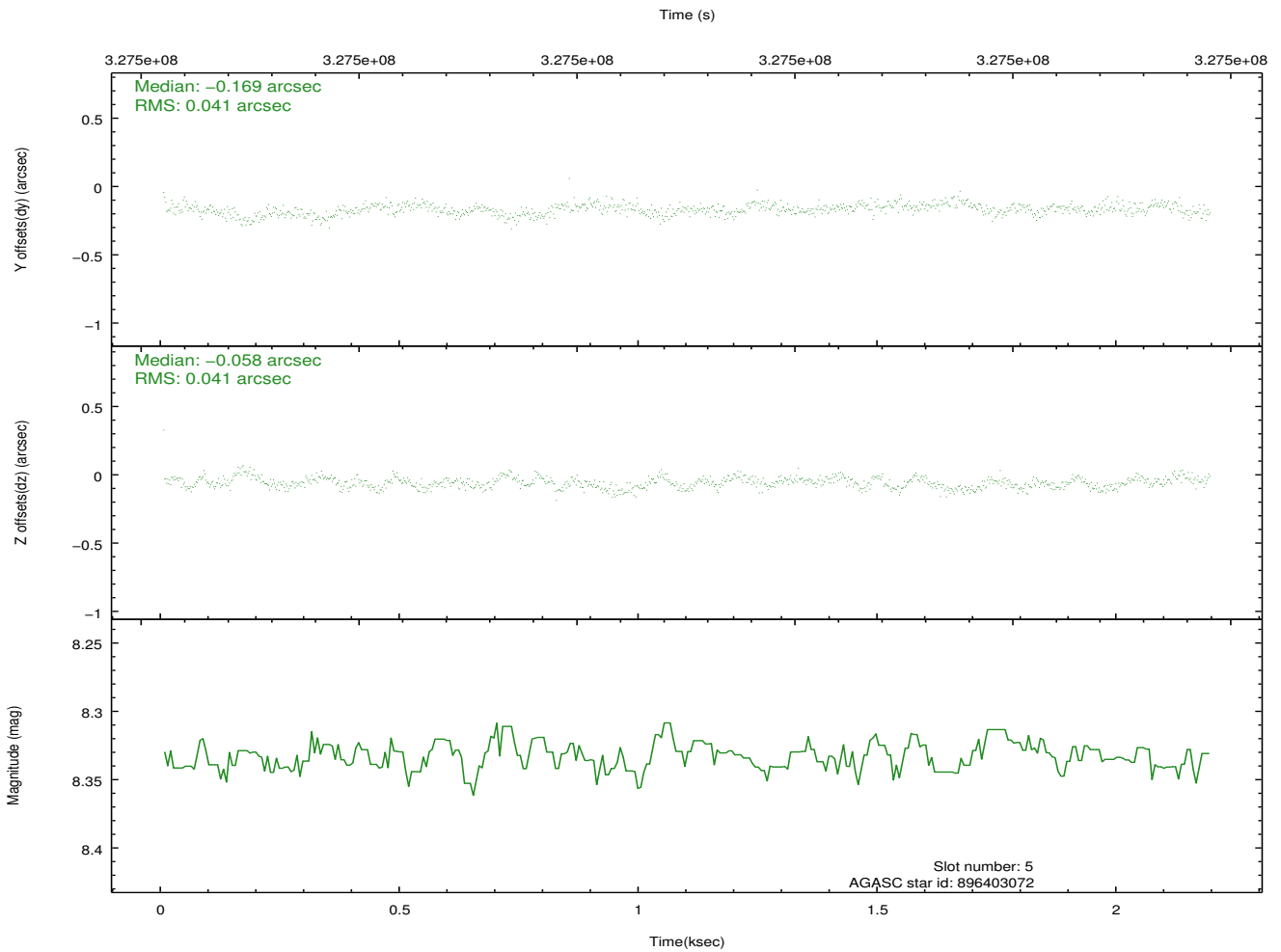
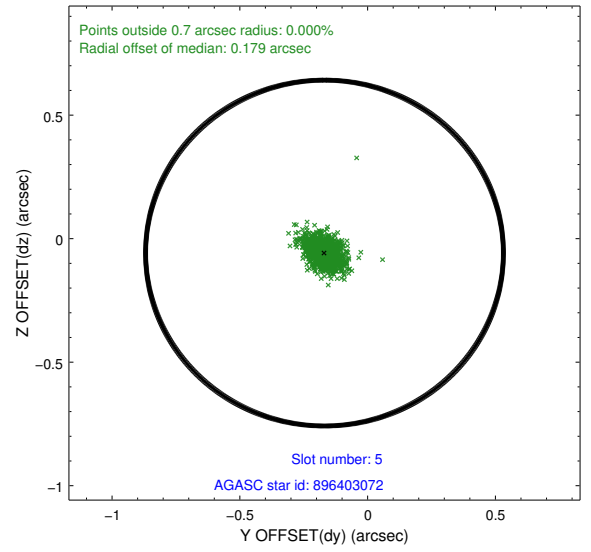
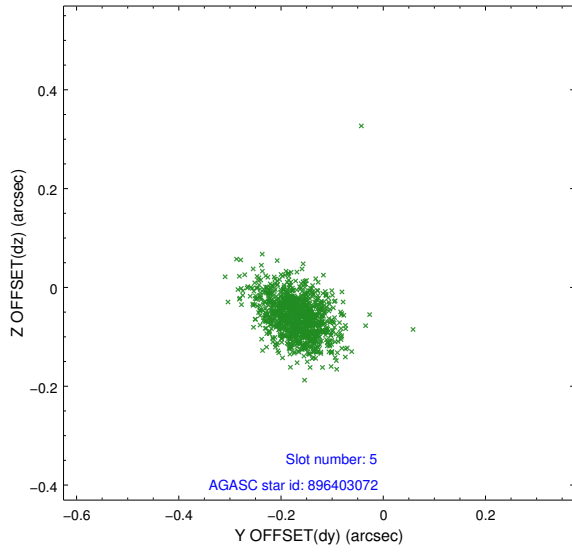
2.4.1 Slot 3



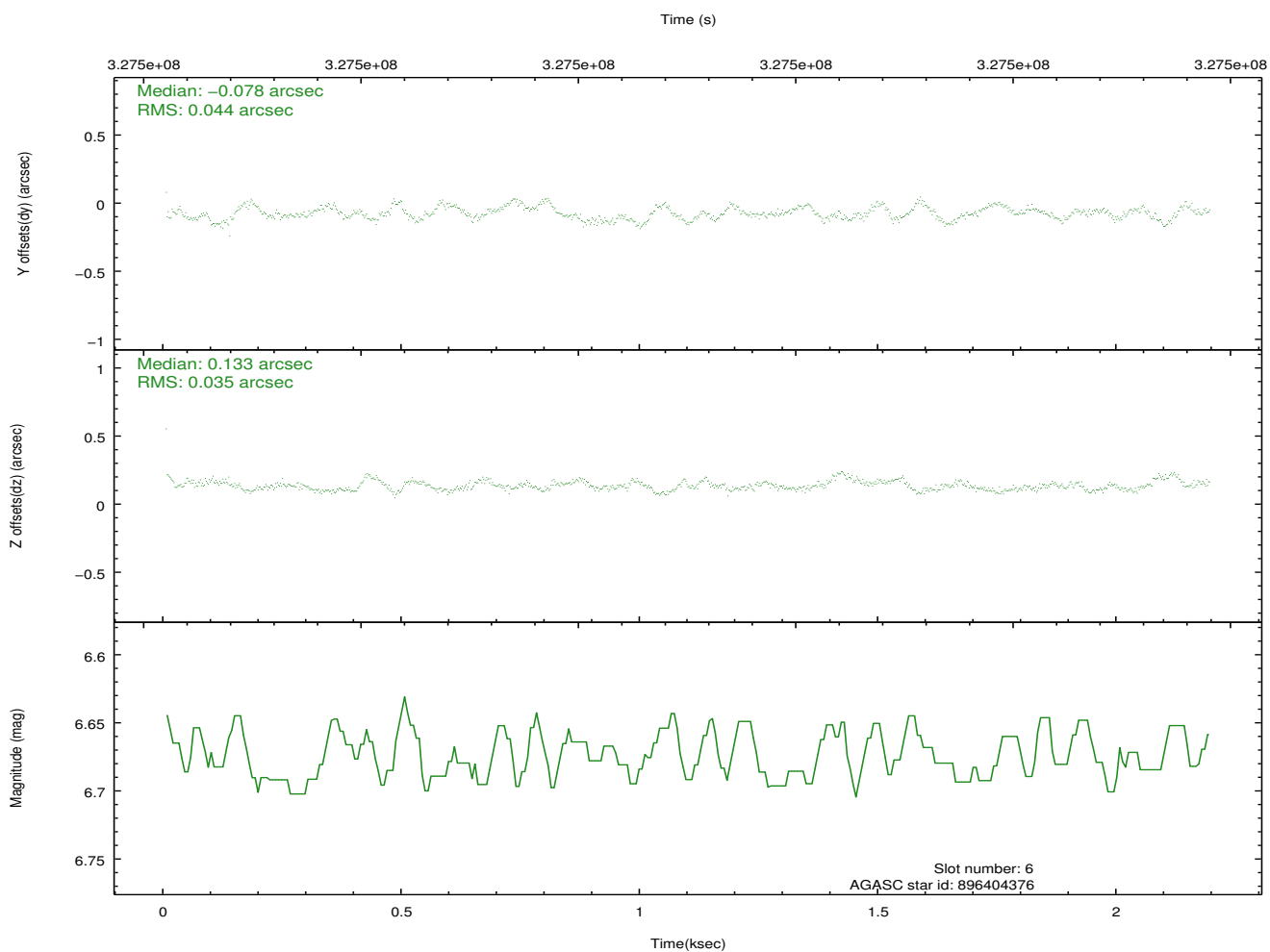
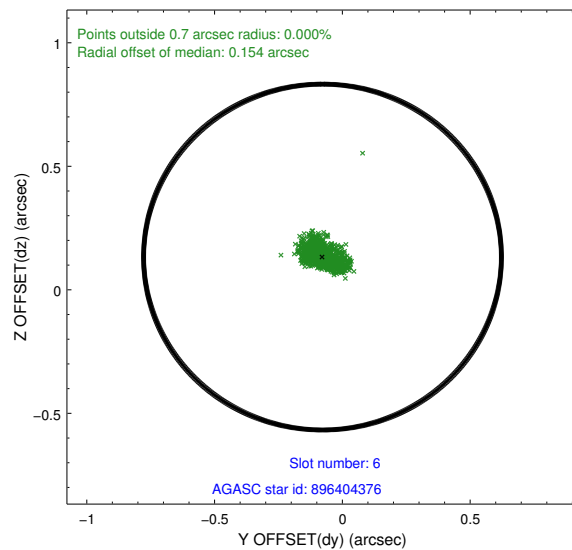
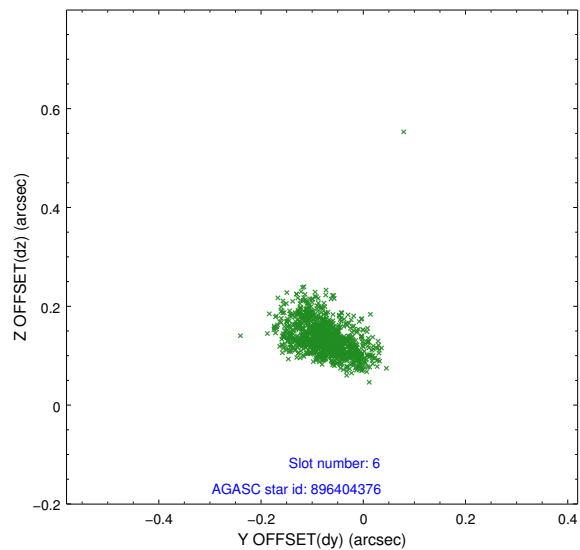
2.4.2 Slot 4



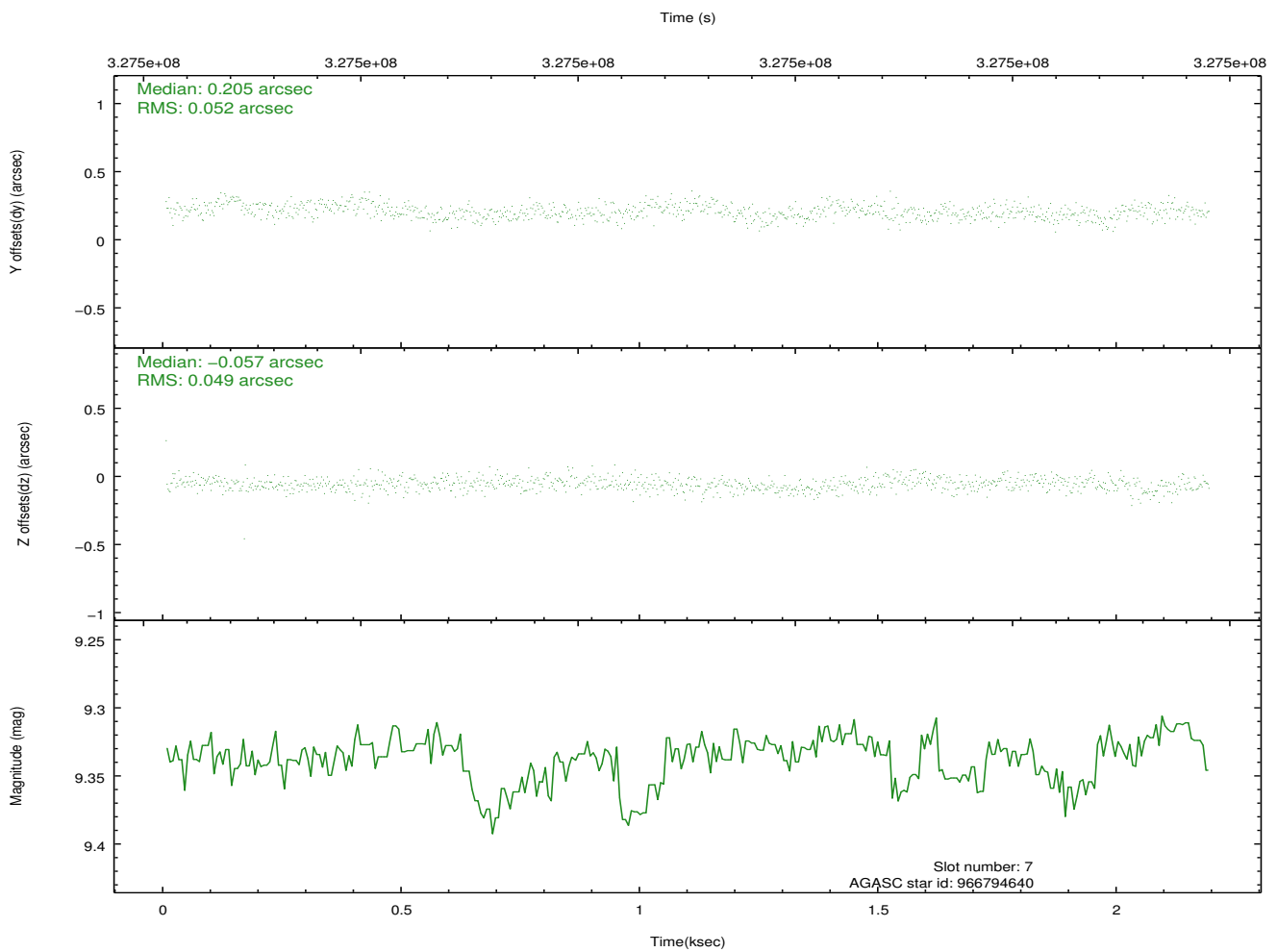
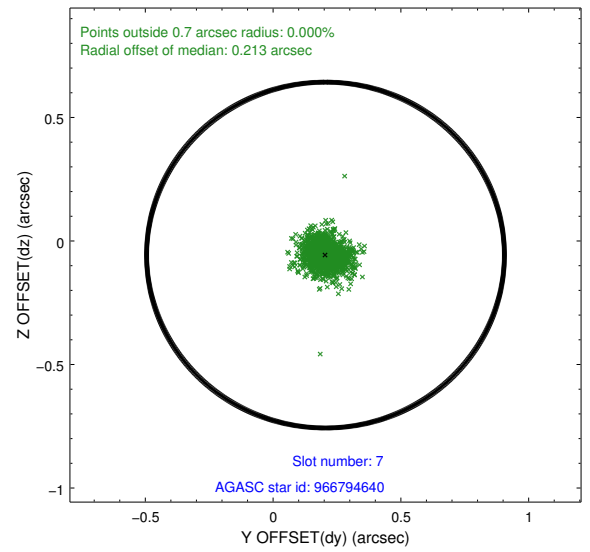
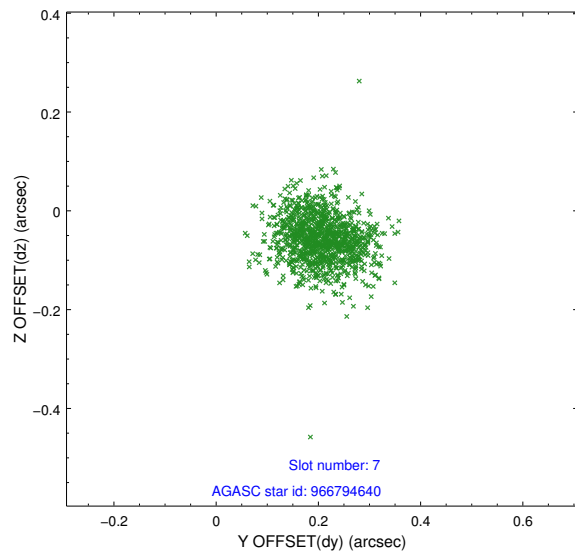
2.4.3 Slot 5



2.4.4 Slot 6

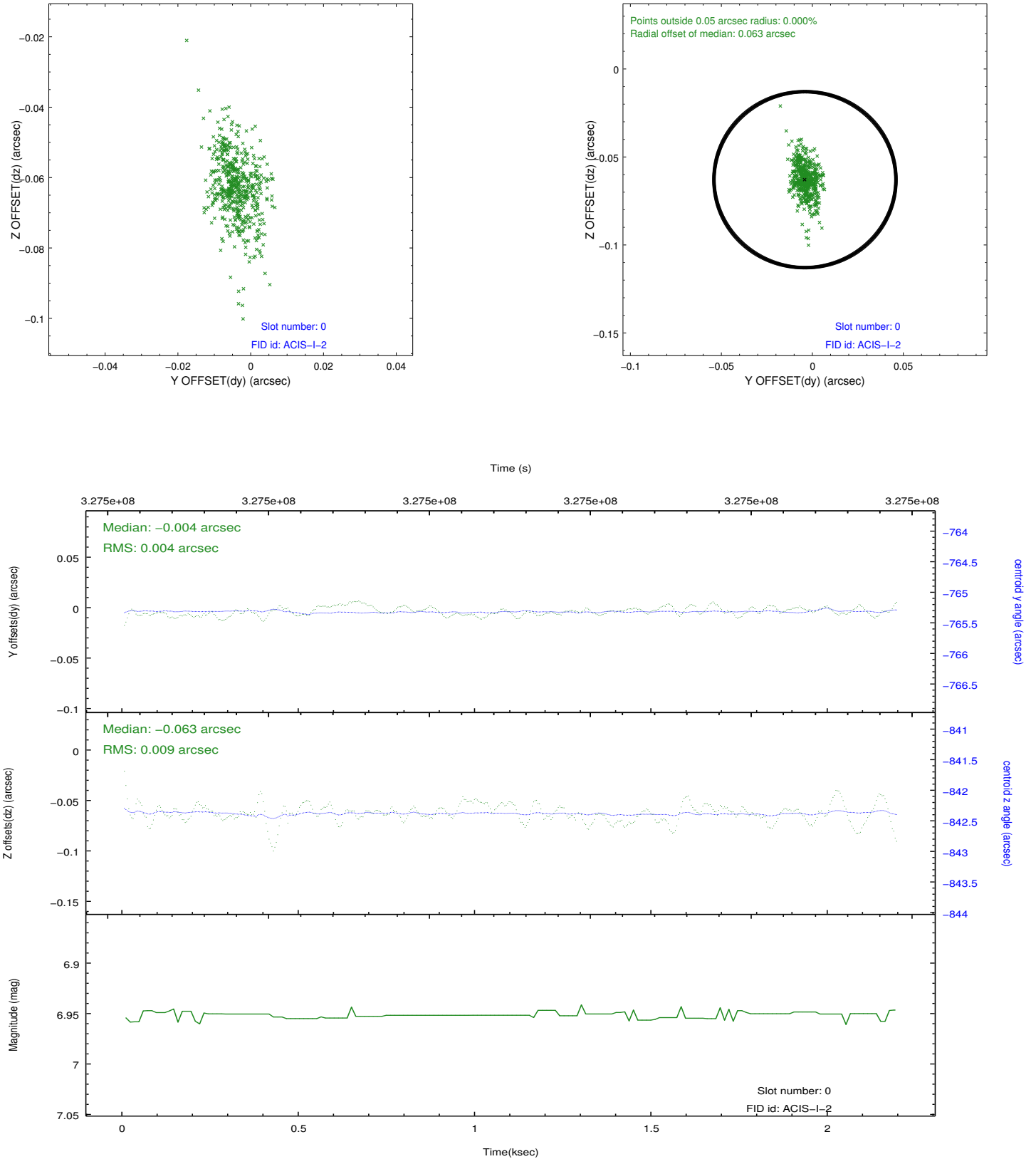


2.4.5 Slot 7

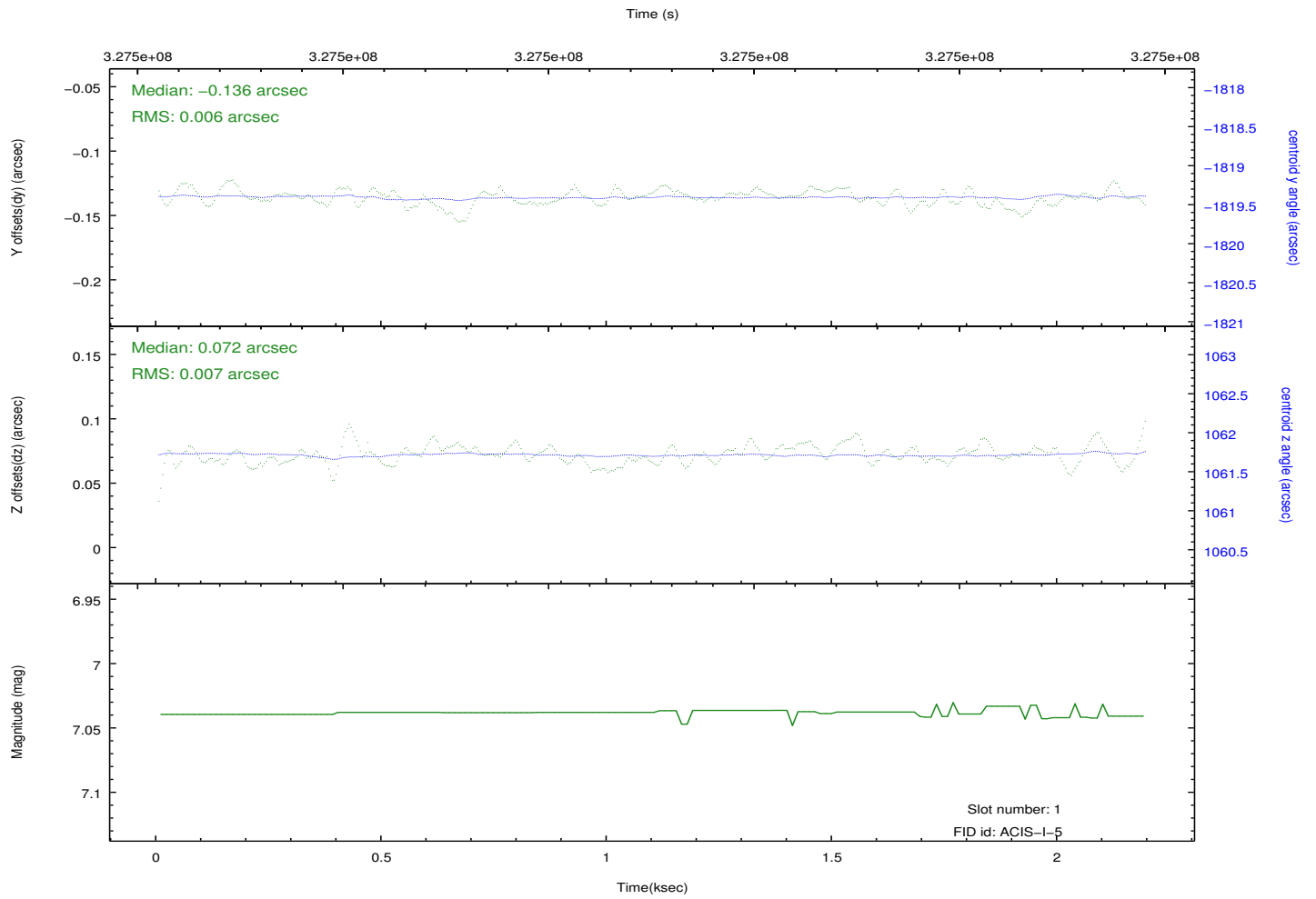
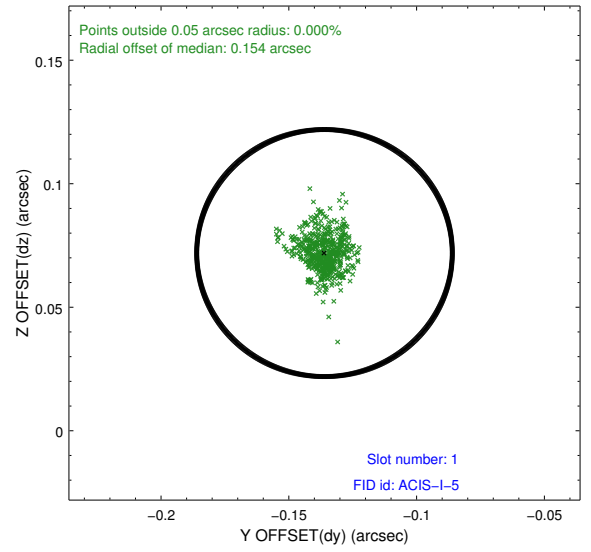
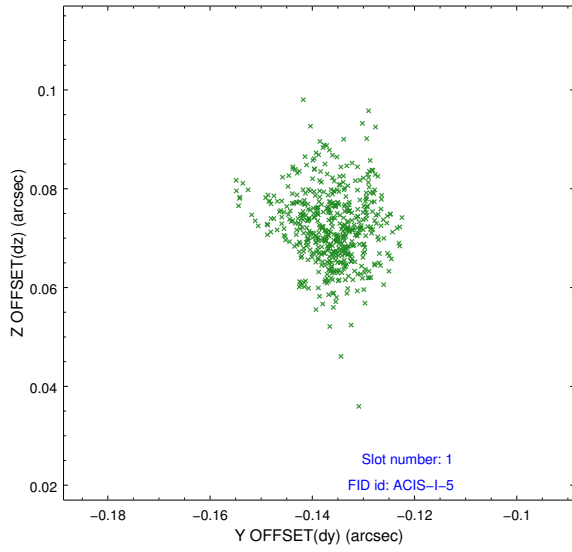


2.5 FID Slots

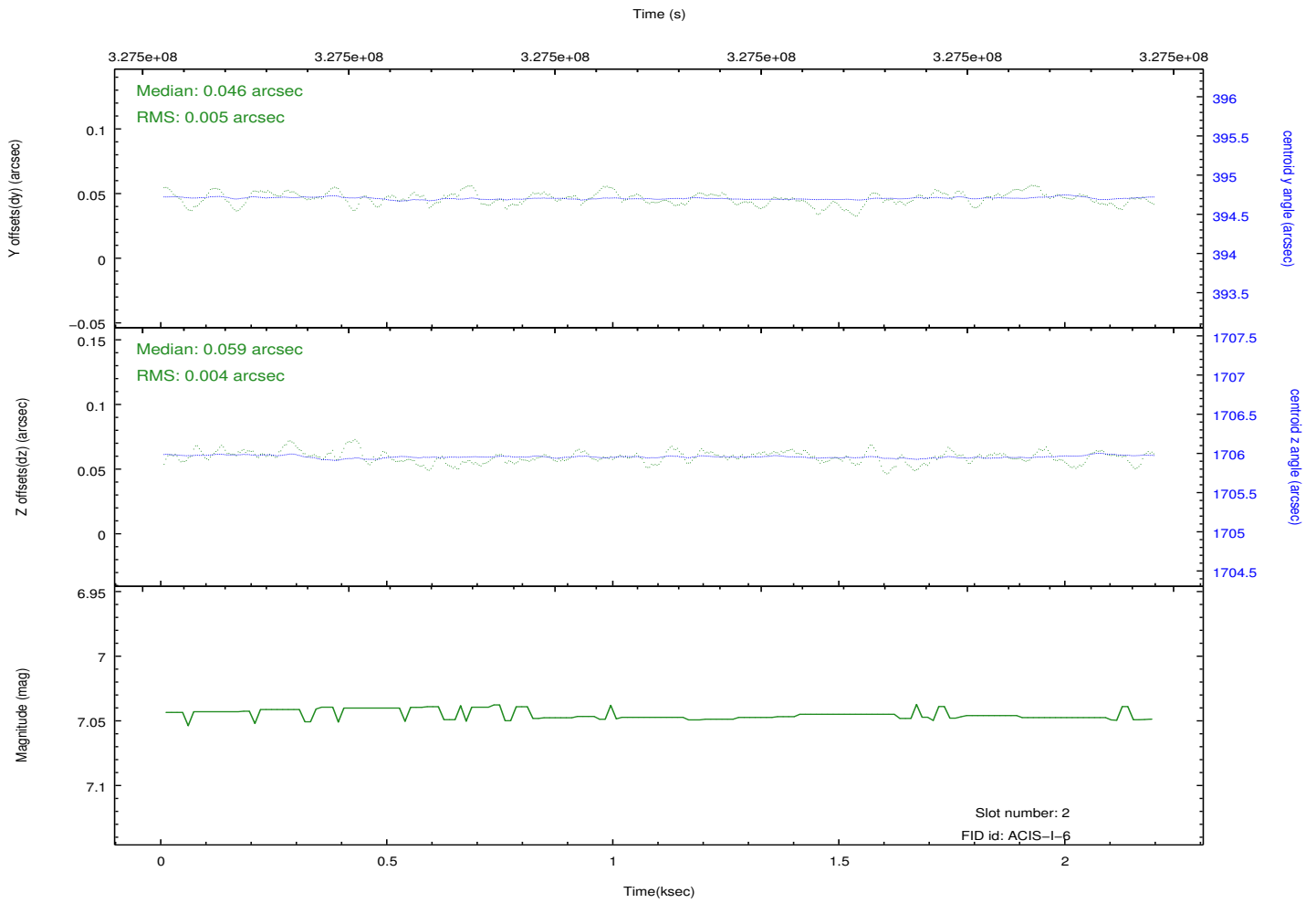
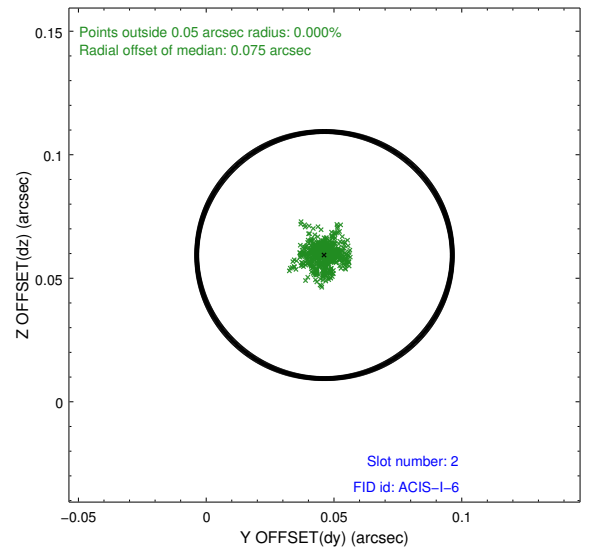
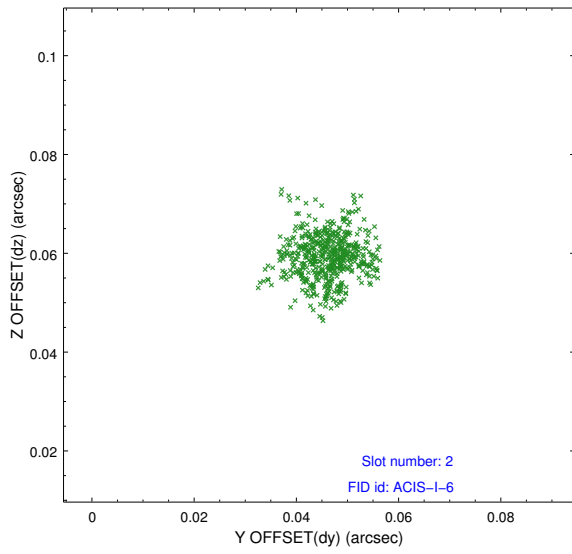
2.5.1 Slot 0



2.5.2 Slot 1



2.5.3 Slot 2



A Summary

A.1 Status

V&V Scientist	Beth Sundheim
V&V Date (YYYY-MM-DD)	2012.05.21
V&V Edition	1
V&V Disposition and Status	OK
V&V Charge Time	2.18545901

A.2 Comments