

# V&V Reference Report

## L2 ASCDS Version : 8.4.4

Observation 9083 - L2 Version 2  
Chandra X-Ray Center

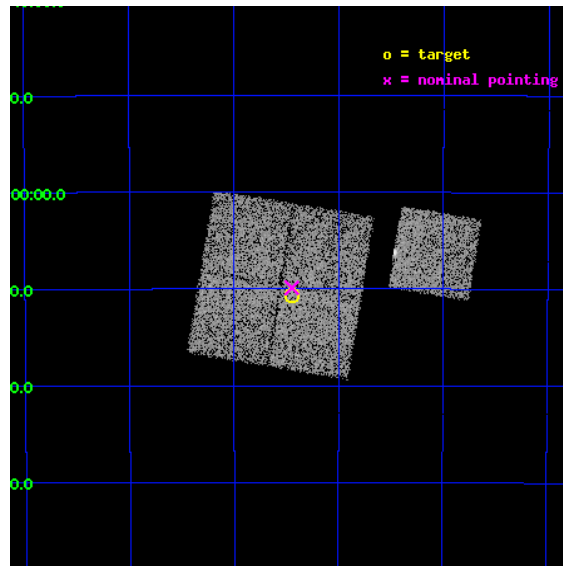
L2 Processing Date : May 30 2012

## Contents

<b>1</b>	<b>Front</b>	<b>2</b>
<b>2</b>	<b>OBI</b>	<b>3</b>
2.1	OBI . . . . .	3
2.1.1	Images . . . . .	3
2.1.2	Bias . . . . .	3
2.1.3	Parameters . . . . .	4
2.1.4	Events . . . . .	4
2.2	Compared Parameters . . . . .	5
2.3	Aspect . . . . .	6
2.4	Star Slots . . . . .	9
2.4.1	Slot 3 . . . . .	9
2.4.2	Slot 4 . . . . .	10
2.4.3	Slot 5 . . . . .	11
2.4.4	Slot 6 . . . . .	12
2.4.5	Slot 7 . . . . .	13
2.5	FID Slots . . . . .	14
2.5.1	Slot 0 . . . . .	14
2.5.2	Slot 1 . . . . .	15
2.5.3	Slot 2 . . . . .	16
<b>A</b>	<b>Summary</b>	<b>17</b>
A.1	Status . . . . .	17
A.2	Comments . . . . .	17

# 1 Front

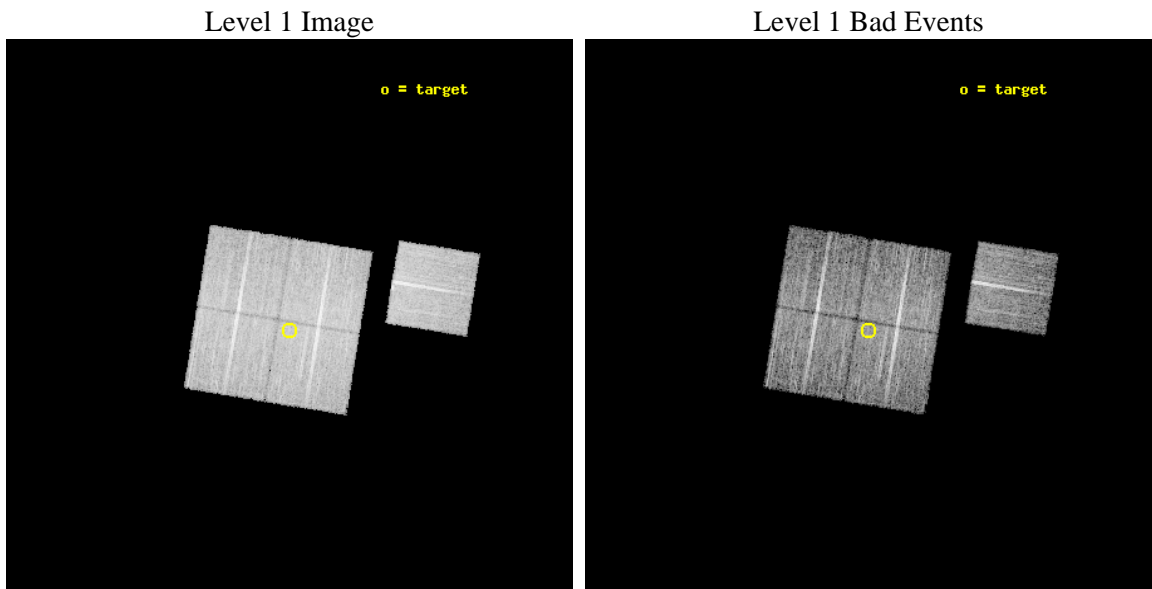
seq_num	500946	Sequence number
obs_id	9083	Observation id
title	Snap-shot survey of potential GeV and TeV pulsars	Proposal title
observer	Professor Gordon Garmire	Principal investigator
object	J1702-4310	Source name
dtycycle	0	&#160
cycle	P	events from which exps? Prim/Second/Both
ra_targ	255.612083	Observer's specified target RA [deg]
dec_targ	-43.177778	Observer's specified target Dec [deg]
ra_nom	255.61164071591	Nominal RA [deg]
dec_nom	-43.164949817918	Nominal Dec [deg]
roll_nom	99.349537693286	Nominal Roll [deg]
revision	2	Processing version of data
ontime	9774.2591148615	Sum of GTIs [s]
livetime	9646.5512238209	Livetime [s]
ontime0	9777.4000751972	Sum of GTIs [s]
ontime1	9777.4000751972	Sum of GTIs [s]
ontime2	9774.2590849996	Sum of GTIs [s]
ontime3	9774.2591148615	Sum of GTIs [s]
ontime6	9777.4000751972	Sum of GTIs [s]
l2events	33715	Number of level 2 events



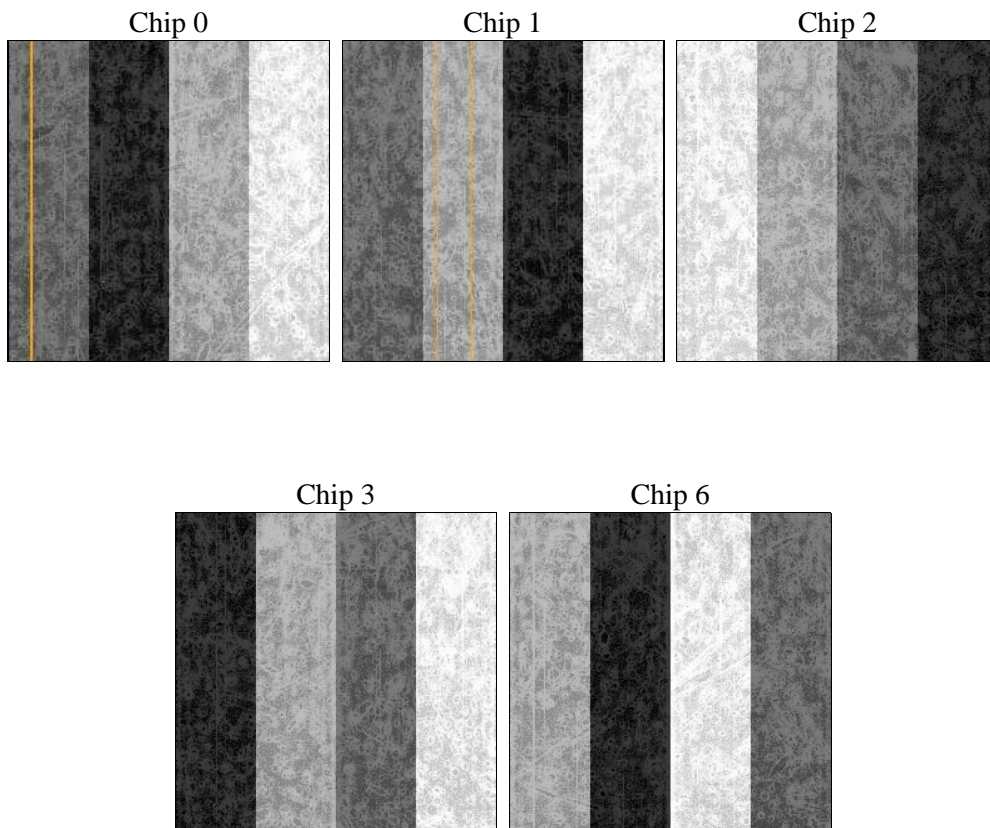
## 2 OBI

### 2.1 OBI

#### 2.1.1 Images



#### 2.1.2 Bias



### 2.1.3 Parameters

obi_num	0	Obi number	sched_exp_time	10000.000000	[s] Scheduled observation exposure time
ascdsver	8.4.4	Processing system revision	ontime	9774.2591148615	Sum of GTIs [s]
caldsver	4.4.9	&#160	ontime0	9777.4000751972	Sum of GTIs [s]
date	2012-05-30T06:20:41	Date and time of file creation	ontime1	9777.4000751972	Sum of GTIs [s]
revision	2	Processing version of data	ontime2	9774.2590849996	Sum of GTIs [s]
			ontime3	9774.2591148615	Sum of GTIs [s]
			ontime6	9777.4000751972	Sum of GTIs [s]
			l1events	381112	Number of level 1 events

### 2.1.4 Events

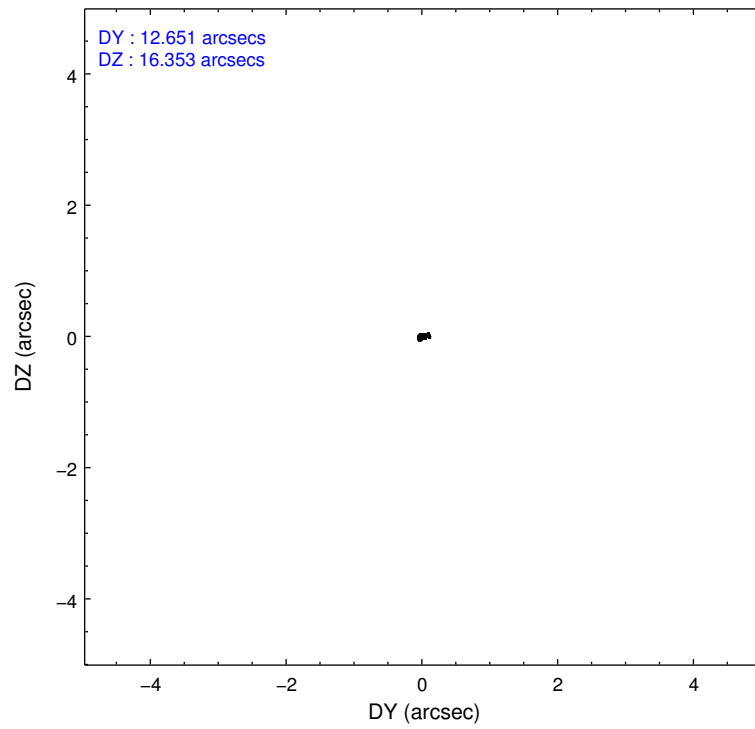
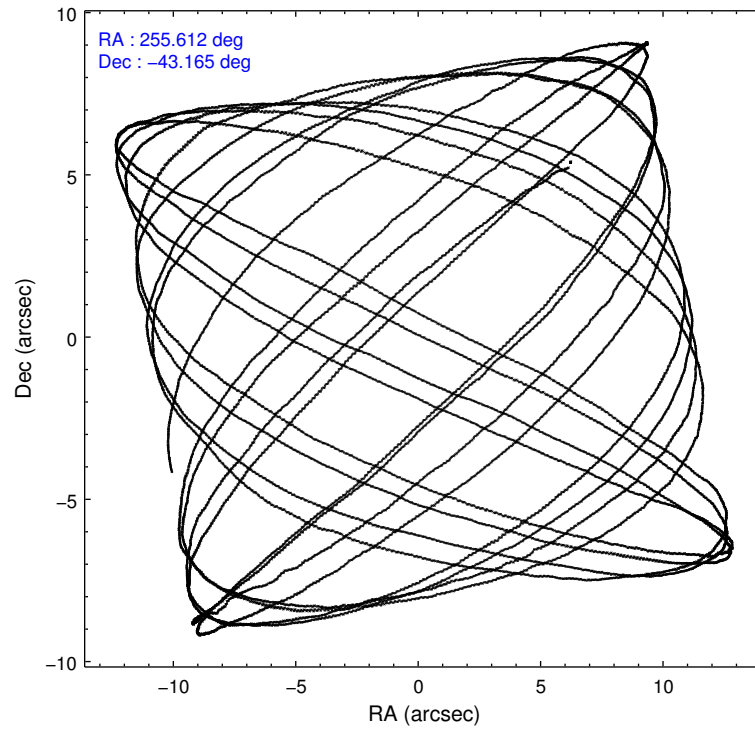
	ccd 0	ccd 1	ccd 2	ccd 3	ccd 6
level 1 events	71129	75100	81896	75907	77080
rejected events	62931	66656	73995	68059	68466
rejected %	88%	88%	90%	89%	88%

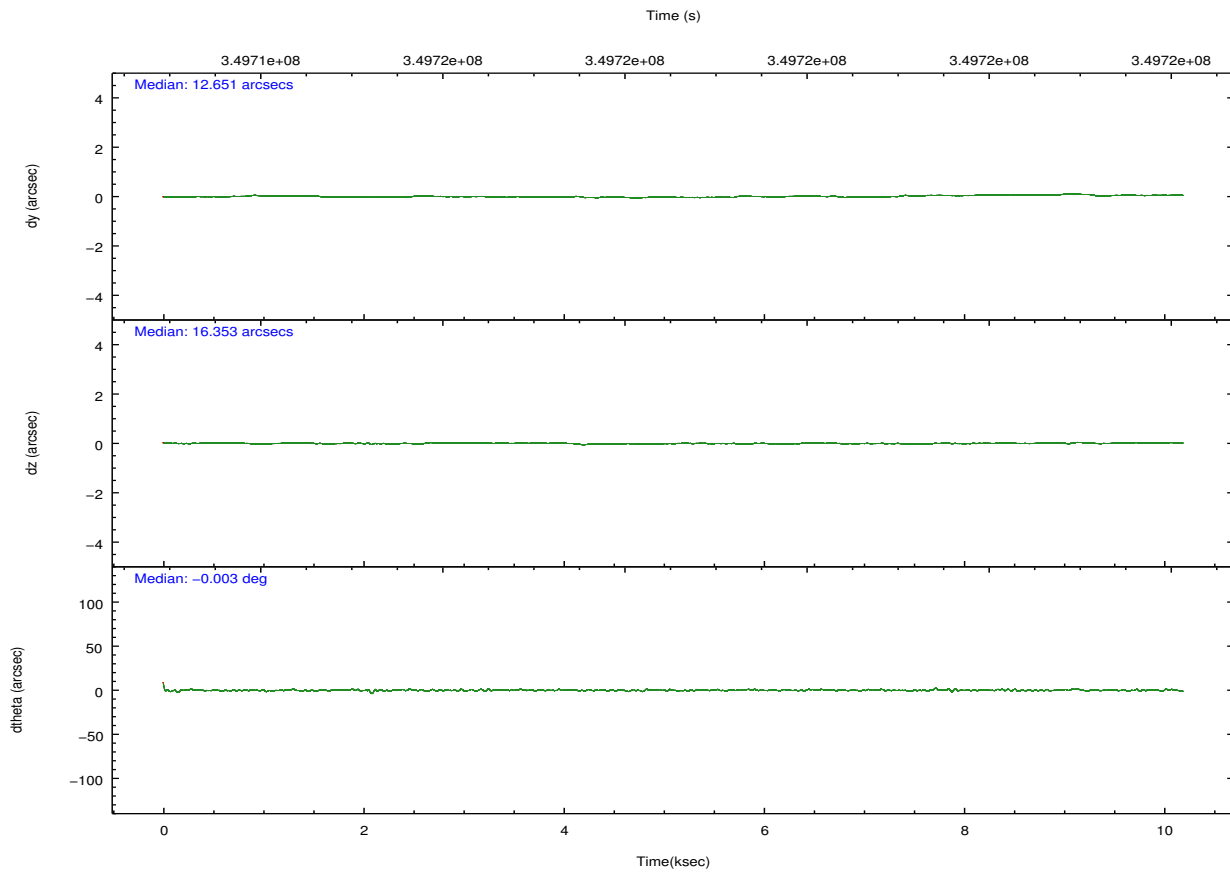
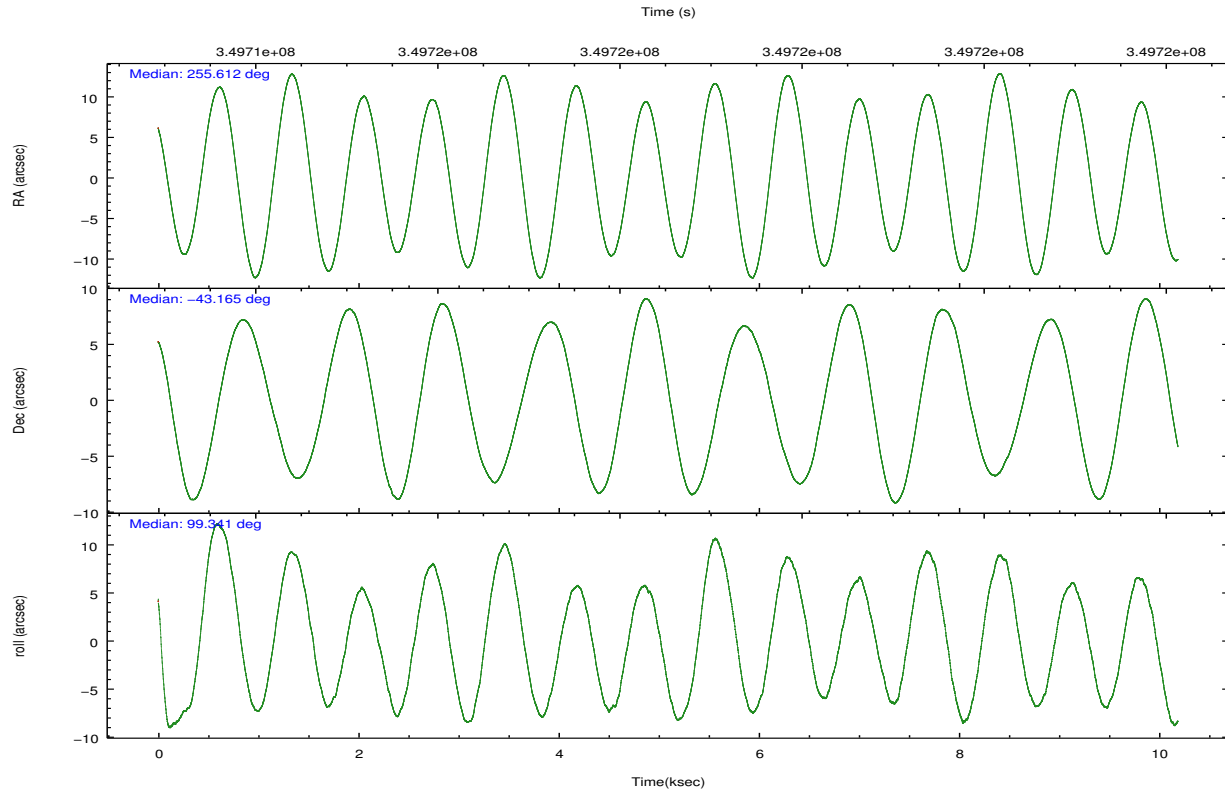
	ccd 0	ccd 1	ccd 2	ccd 3	ccd 6
grade 0 events	3034	3045	3081	3050	3360
	4%	4%	3%	4%	4%
grade 1 events	42	39	48	44	48
	0%	0%	0%	0%	0%
grade 2 events	2001	1901	1917	1681	1852
	2%	2%	2%	2%	2%
grade 3 events	847	941	812	813	859
	1%	1%	0%	1%	1%
grade 4 events	854	907	787	832	887
	1%	1%	0%	1%	1%
grade 5 events	2346	2673	2073	2754	2667
	3%	3%	2%	3%	3%
grade 6 events	1463	1656	1308	1473	1658
	2%	2%	1%	1%	2%
grade 7 events	60542	63938	71870	65260	65749
	85%	85%	87%	85%	85%

## 2.2 Compared Parameters

Parameter	Planned	Actual	Parameter	Planned	Actual
Instrument	ACIS	ACIS	Obspar format version number	7	7
Detector	ACIS-01236	ACIS-01236	Obspar file type	PREDICTED	ACTUAL
Grating	NONE	NONE	Obspar update status	NONE	UPDATED
Data mode	VFAINT	VFAINT	CCD I0 on	Y	Y
Observation mode	POINTING	POINTING	CCD I1 on	Y	Y
[deg] Pointing RA	255.635693	255.6116407159129	CCD I2 on	Y	Y
[deg] Pointing Dec	-43.186151	-43.164949817918	CCD I3 on	Y	Y
[deg] Pointing Roll	99.157309	99.34953769328622	CCD S0 on	N	N
[mm] SIM focus pos	-0.782348	-0.7809083437167272	CCD S1 on	N	N
[mm] SIM defocus	0	0.001439871863259334	CCD S2 on	O2	Y
[mm] SIM translation stage pos	-232.122463	-232.1215886400192	CCD S3 on	O1	N
[mm] SIM translation stage offset	-1.47	-1.470864362910476	CCD S4 on	N	N
[s] Observation start time (MET)	349713622.184000	349713141.89925	CCD S5 on	N	N
Observation start date	2009-01-30T14:39:16	2009-01-30T14:32:21	Number of optional ACIS chips dropped	1	1
[s] Observation end time (MET)	349723622.184000	349723839.31228	On-chip summing requested	N	N
Observation end date	2009-01-30T17:25:56	2009-01-30T17:30:39	Subarray requested	NONE	NONE
Read mode	TIMED	TIMED	Alternating exposures requested	N	N
			[s] Primary exposure time	0.000000	3.1

## 2.3 Aspect



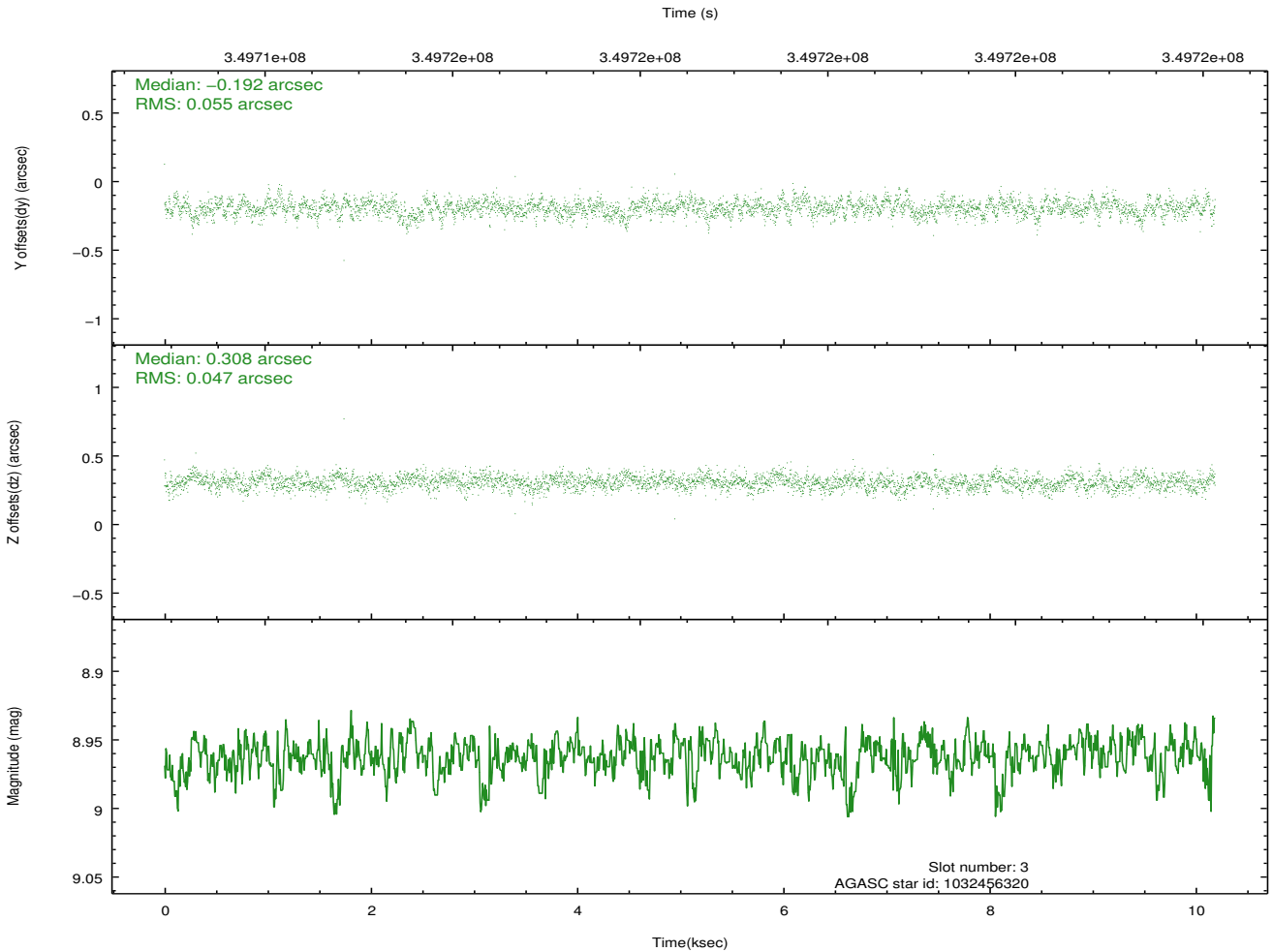
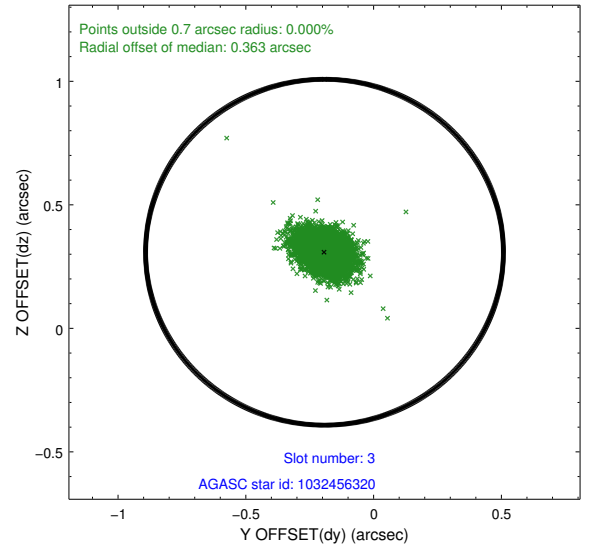
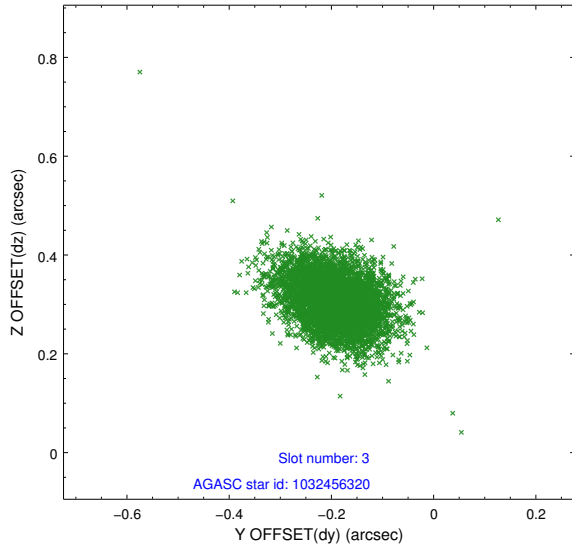


### Slot Statistics

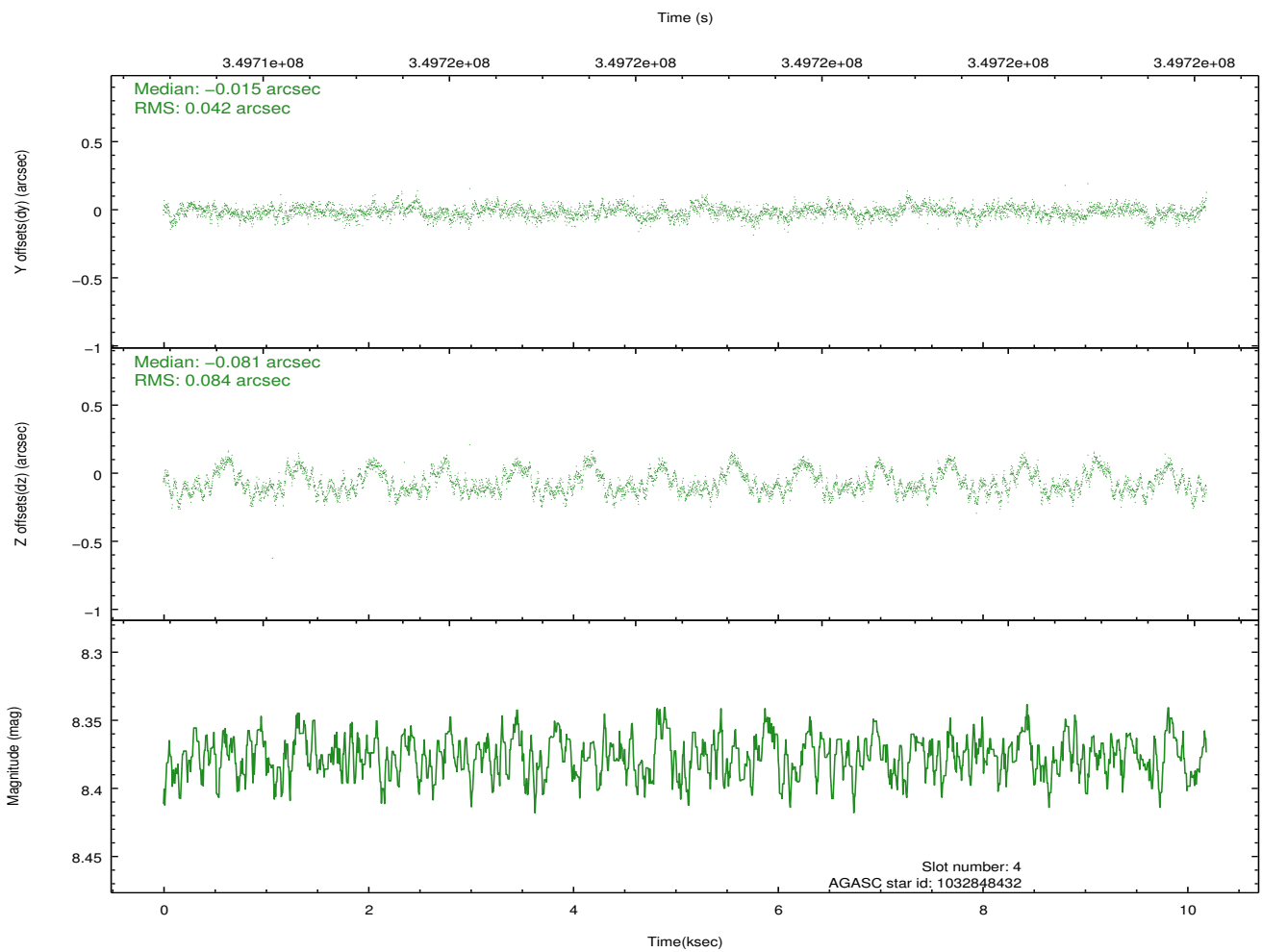
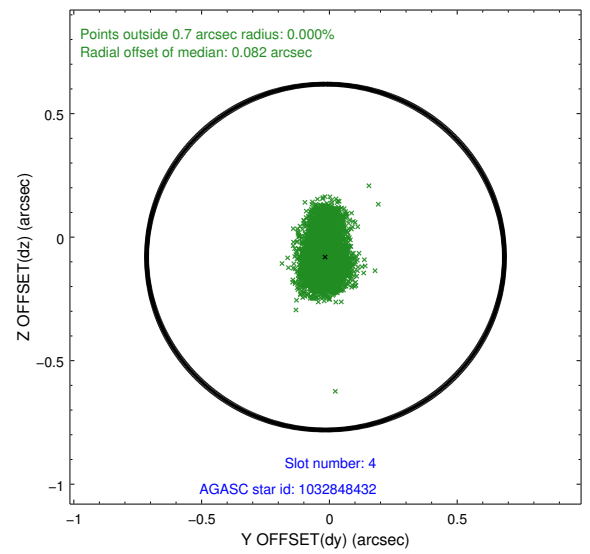
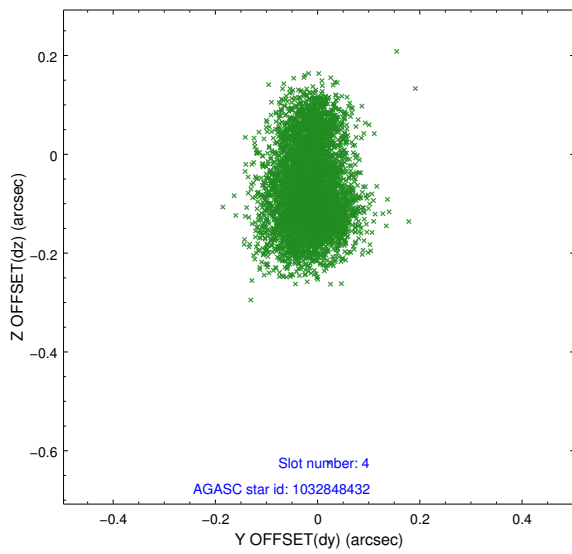
slot	status	id	mag	n_pts	med_dy	med_dz	dr1	dr2	ra	dec	mean_y	mean_z
0	FID	ACIS-I-2	6.94	2486	-0.074	-0.143	0.008	0.015	0.000000	0.000000	-767.48	-876.42
1	FID	ACIS-I-4	6.93	2485	0.175	0.085	0.007	0.012	0.000000	0.000000	2146.57	1029.73
2	FID	ACIS-I-5	6.99	2486	-0.202	0.127	0.009	0.015	0.000000	0.000000	-1820.71	1027.98
3	GUIDE	1032456320	8.96	4968	-0.192	0.308	0.075	0.125	256.394531	-42.552800	1922.18	-2347.58
4	GUIDE	1032848432	8.38	4970	-0.015	-0.081	0.098	0.168	254.987189	-43.220778	141.46	1700.03
5	GUIDE	1032978696	8.58	4944	0.151	-0.015	0.080	0.121	255.616299	-43.492667	-1081.16	226.05
6	GUIDE	1032982224	7.52	4970	0.143	0.135	0.061	0.101	256.128626	-43.309766	-649.74	-1204.00
7	GUIDE	1032336736	8.92	4966	-0.084	-0.369	0.082	0.128	254.770818	-42.975293	1100.02	2129.68

## 2.4 Star Slots

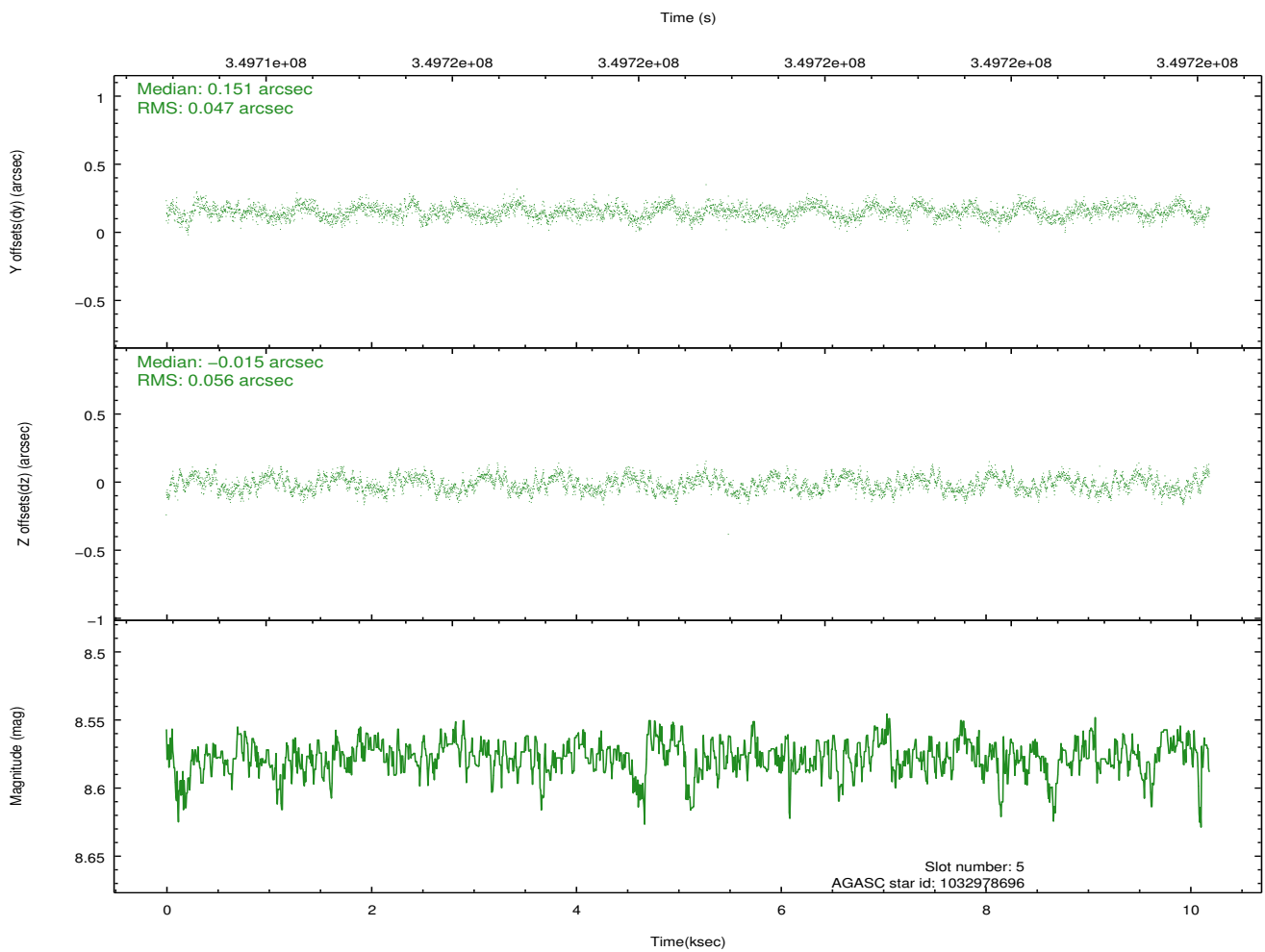
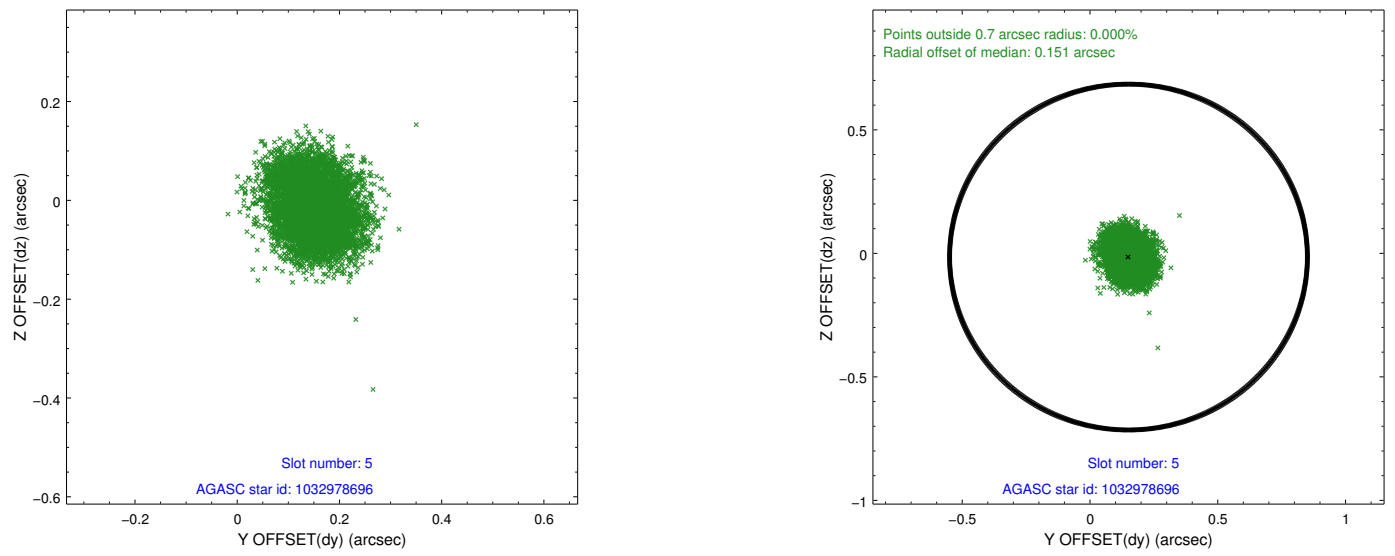
### 2.4.1 Slot 3



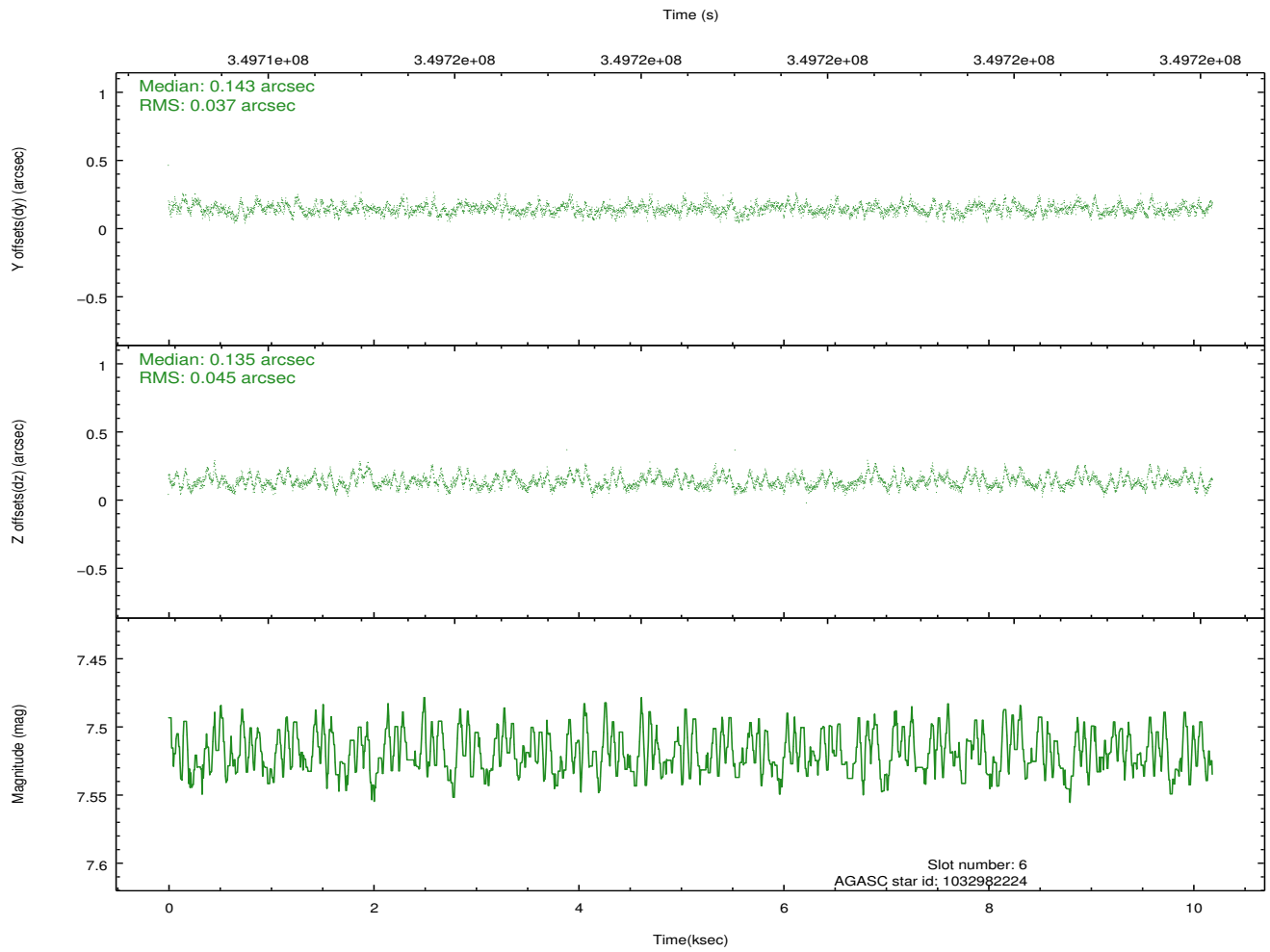
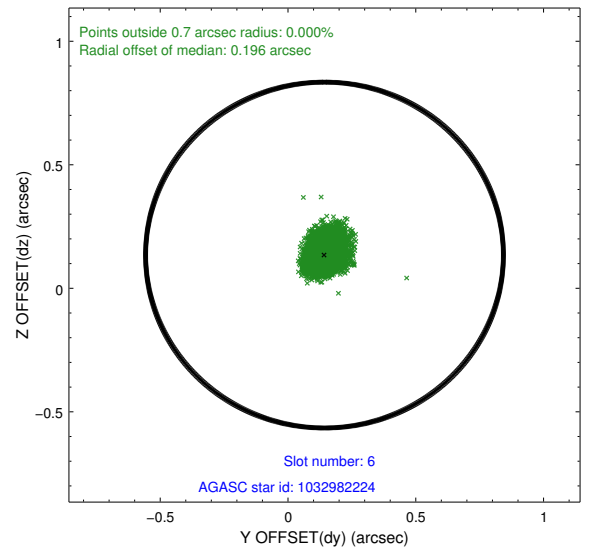
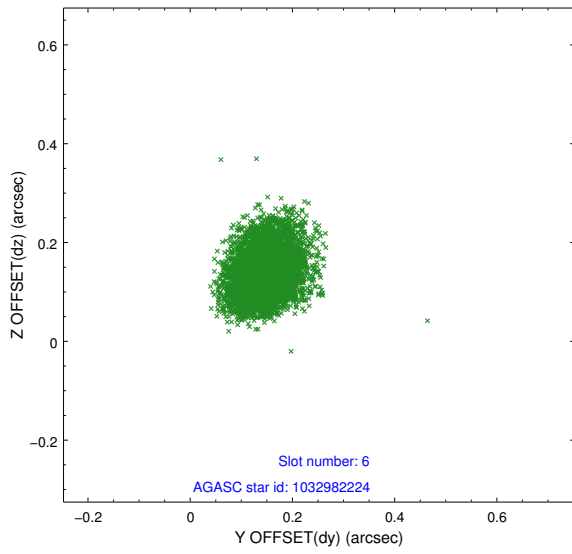
## 2.4.2 Slot 4



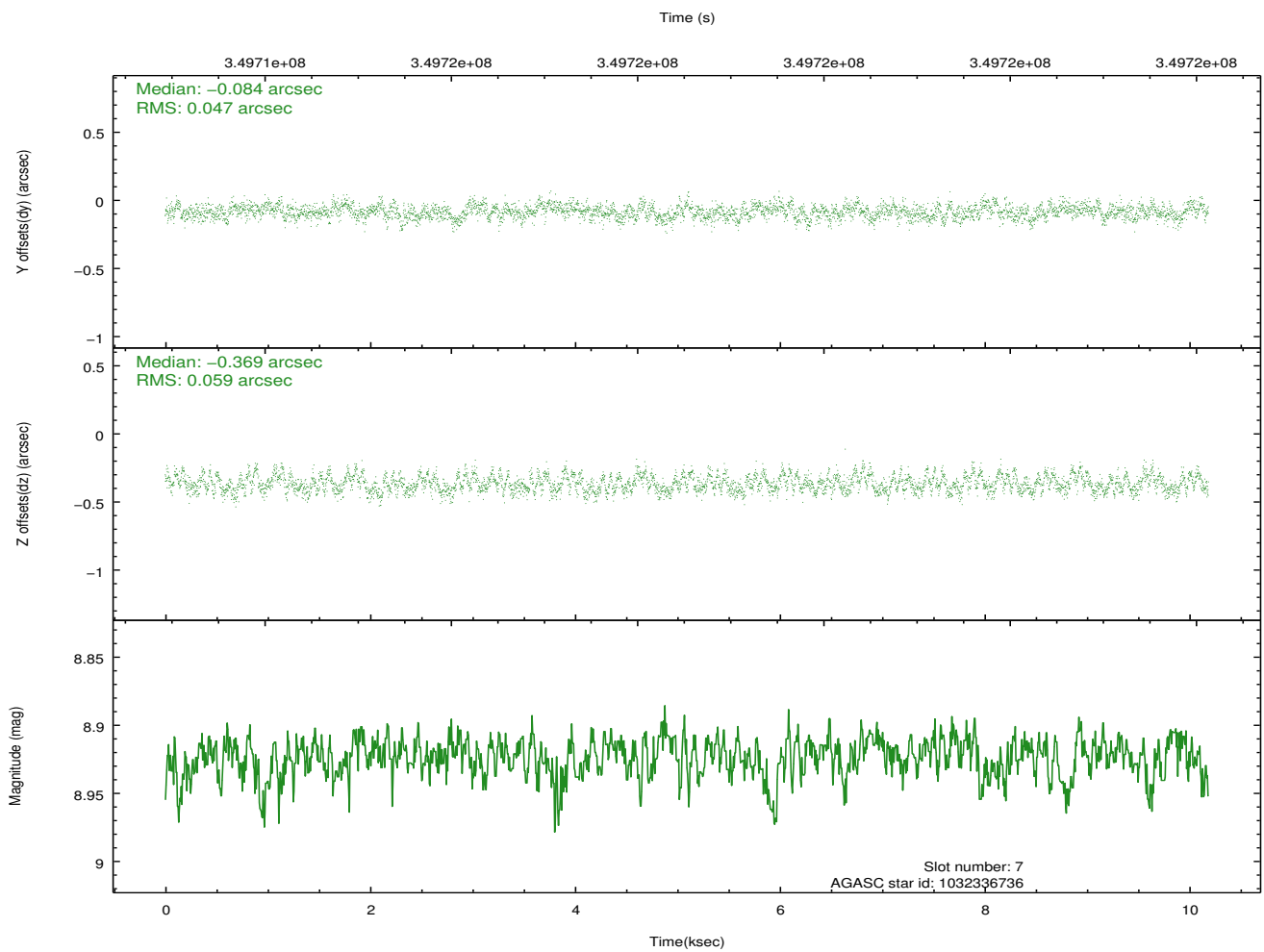
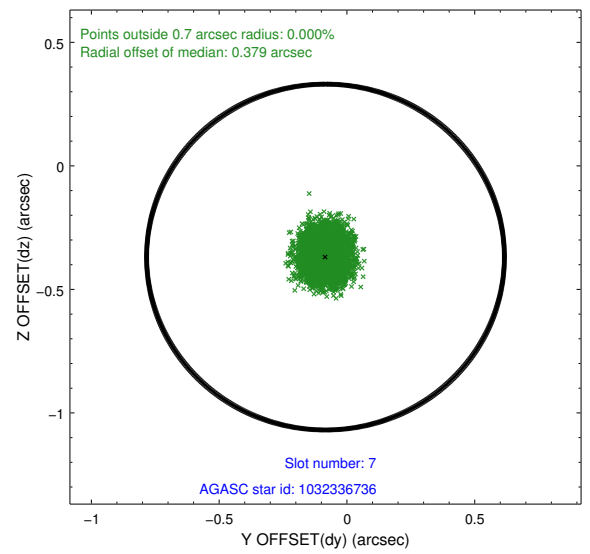
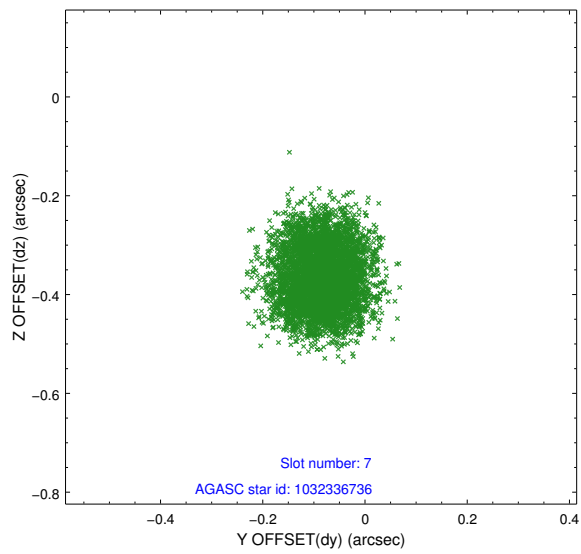
### 2.4.3 Slot 5



### 2.4.4 Slot 6

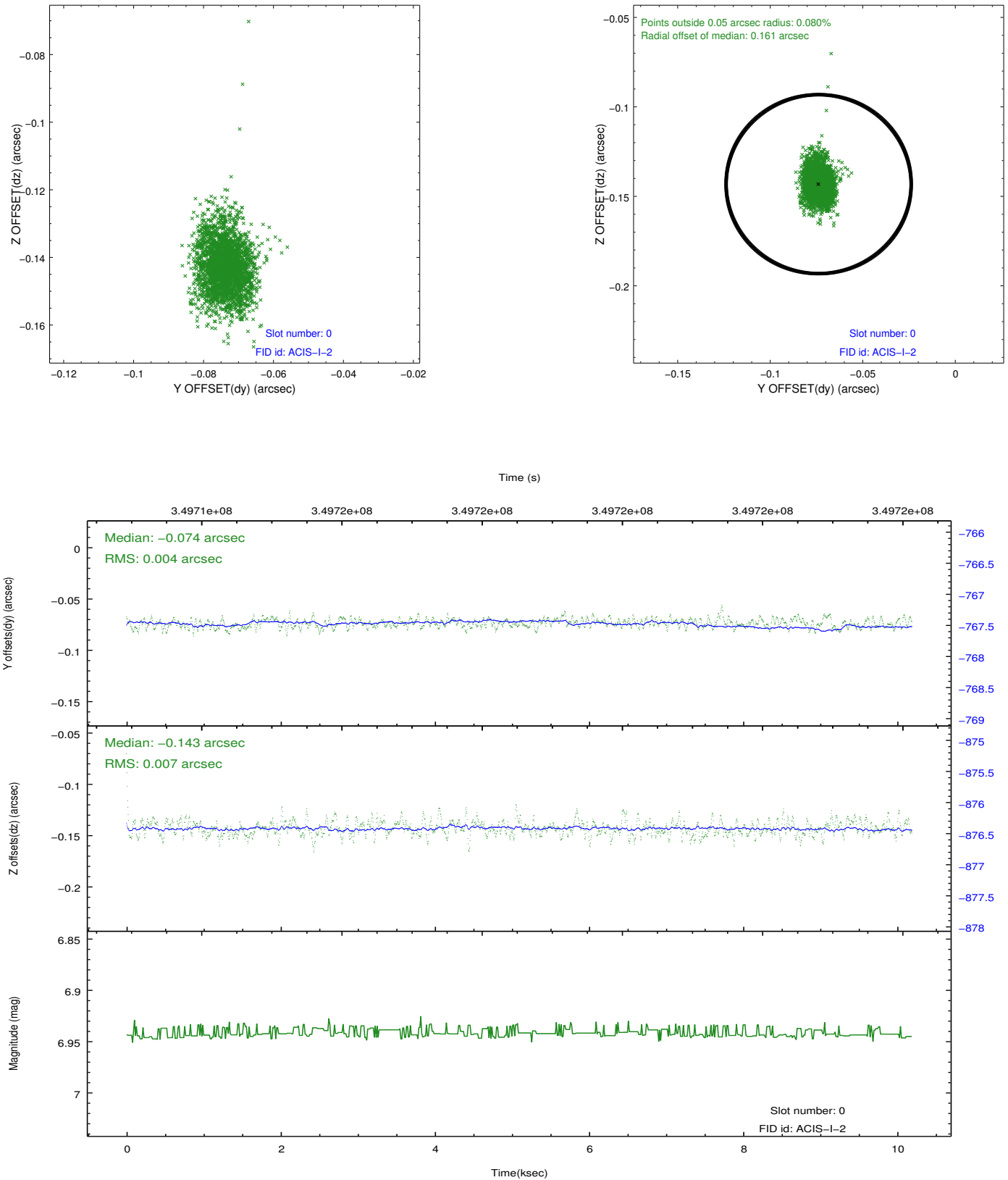


## 2.4.5 Slot 7

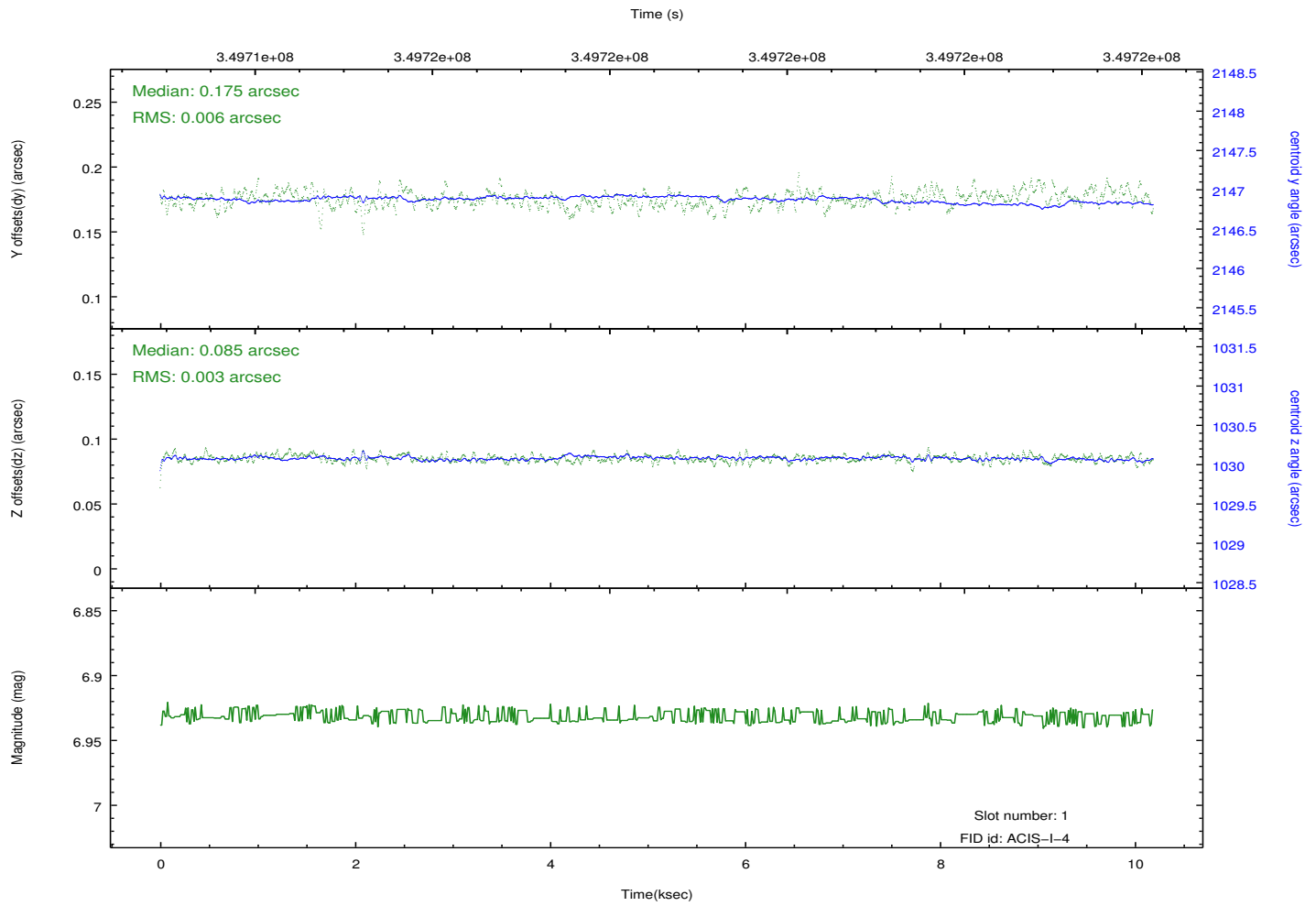
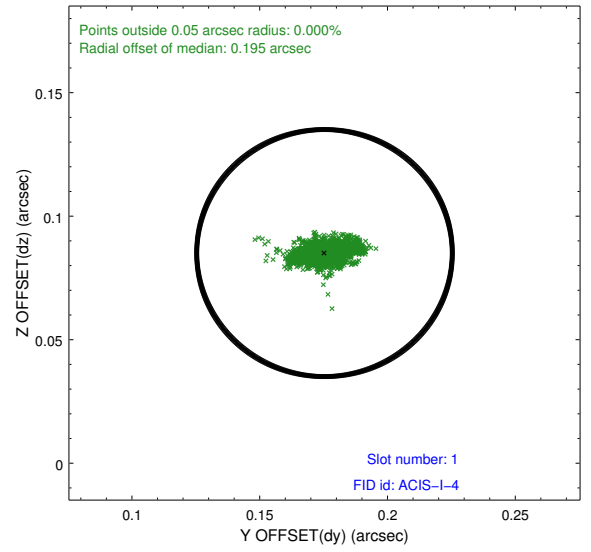
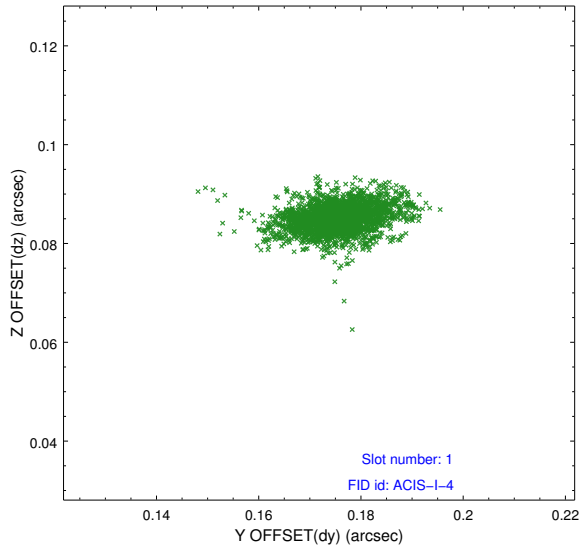


## 2.5 FID Slots

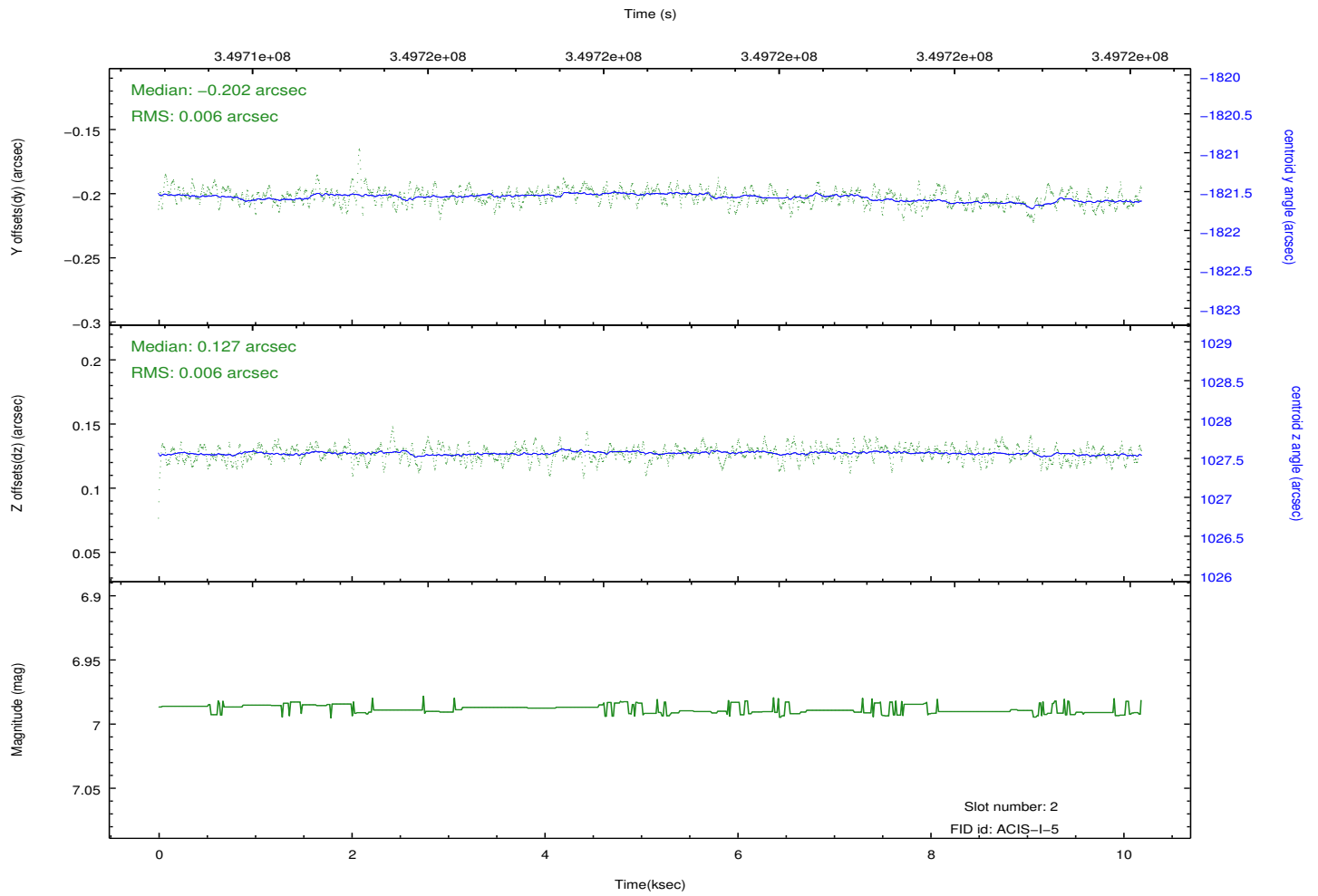
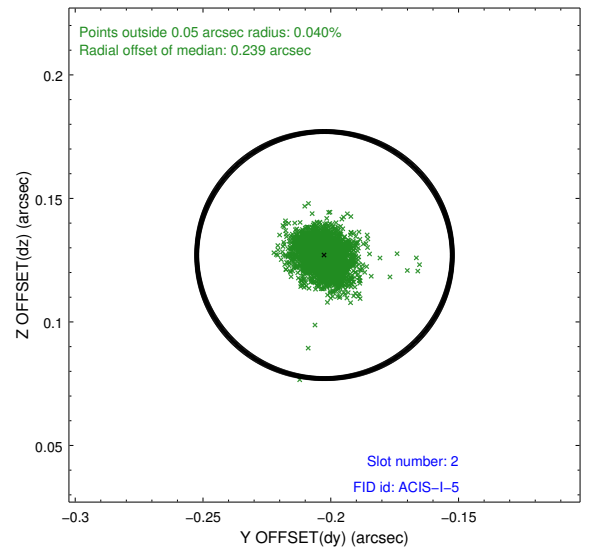
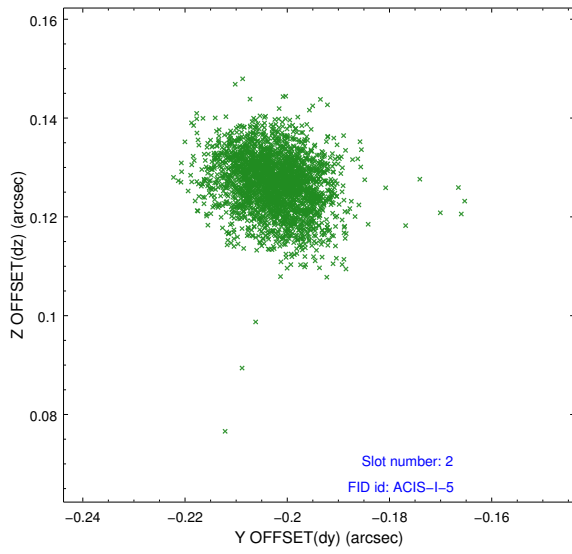
### 2.5.1 Slot 0



## 2.5.2 Slot 1



### 2.5.3 Slot 2



# A Summary

## A.1 Status

V&V Scientist	Jen Lauer
V&V Date (YYYY-MM-DD)	2012.06.04
V&V Edition	1
V&V Disposition and Status	OK
V&V Charge Time	9.77425911

## A.2 Comments

Optional chip CCD S3 not used.