

V&V Reference Report

L2 ASCDS Version : 8.4.4

Observation 9093 - L2 Version 2
Chandra X-Ray Center

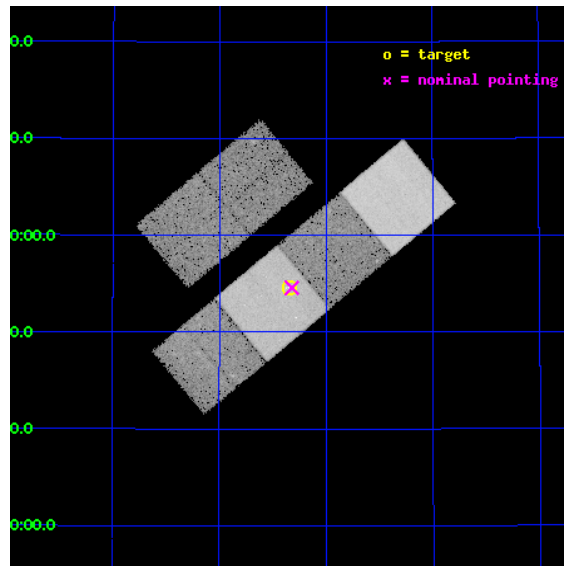
L2 Processing Date : May 8 2012

Contents

1	Front	2
2	OBI	3
2.1	OBI	3
2.1.1	Images	3
2.1.2	Bias	3
2.1.3	Parameters	4
2.1.4	Events	4
2.2	Compared Parameters	5
2.3	Aspect	6
2.4	Star Slots	9
2.4.1	Slot 3	9
2.4.2	Slot 4	10
2.4.3	Slot 5	11
2.4.4	Slot 6	12
2.4.5	Slot 7	13
2.5	FID Slots	14
2.5.1	Slot 0	14
2.5.2	Slot 1	15
2.5.3	Slot 2	16
A	Summary	17
A.1	Status	17
A.2	Comments	17

1 Front

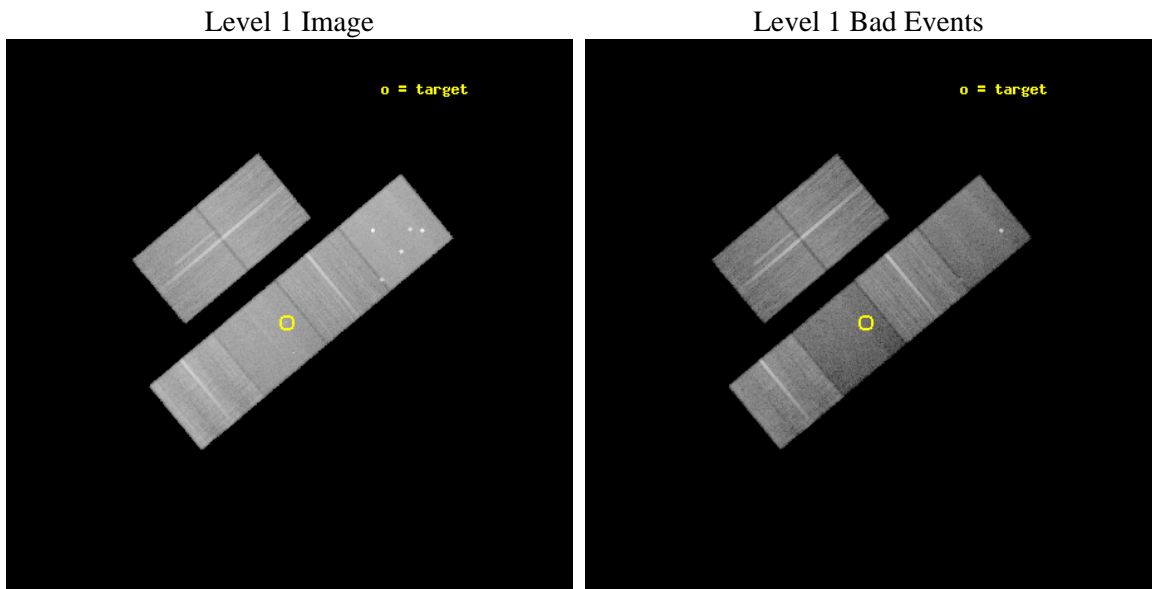
seq_num	500956	Sequence number
obs_id	9093	Observation id
title	Chandra Observations of Young, Energetic Supernovae	Proposal title
observer	Prof. David Pooley	Principal investigator
object	SN 2006jc	Source name
dtycycle	0	
cycle	P	events from which exps? Prim/Second/Both
ra_targ	139.336667	Observer's specified target RA [deg]
dec_targ	41.909083	Observer's specified target Dec [deg]
ra_nom	139.33018394404	Nominal RA [deg]
dec_nom	41.909763424134	Nominal Dec [deg]
roll_nom	140.16186012956	Nominal Roll [deg]
revision	2	Processing version of data
ontime	25148.799906373	Sum of GTIs [s]
livetime	24830.350659169	Livetime [s]
ontime2	25148.799906373	Sum of GTIs [s]
ontime3	25145.558915913	Sum of GTIs [s]
ontime5	25148.799906373	Sum of GTIs [s]
ontime6	25145.558906138	Sum of GTIs [s]
ontime7	25148.799906373	Sum of GTIs [s]
ontime8	25142.31789577	Sum of GTIs [s]
l2events	262567	Number of level 2 events



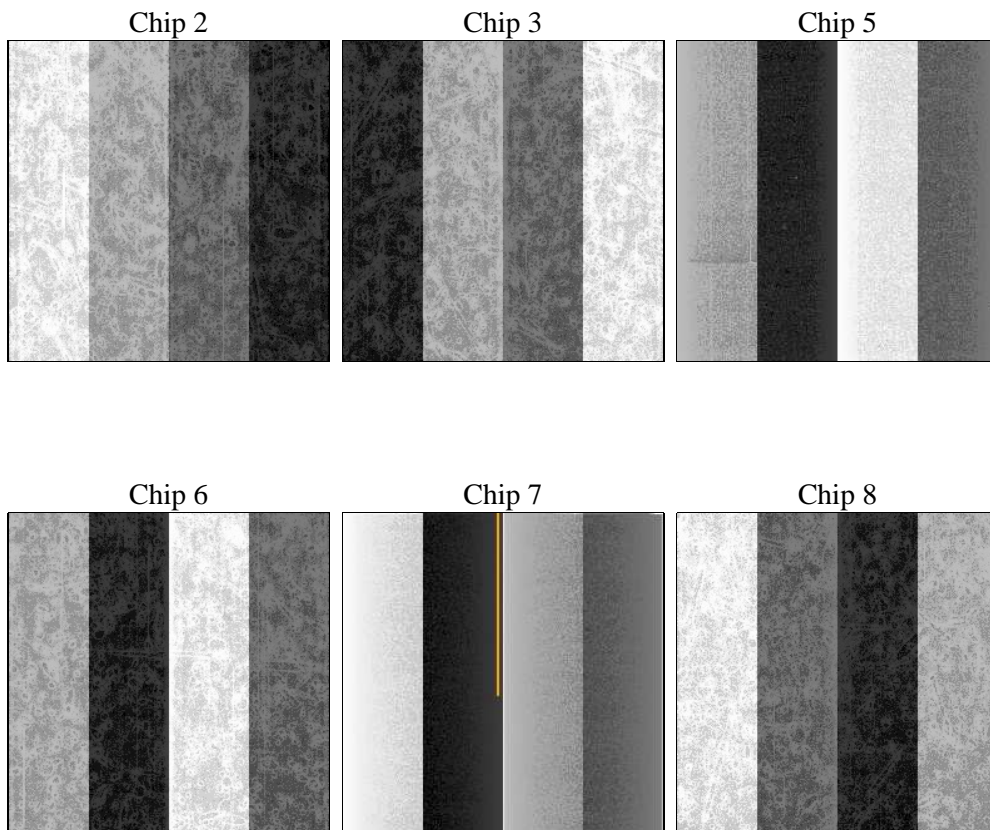
2 OBI

2.1 OBI

2.1.1 Images



2.1.2 Bias



2.1.3 Parameters

obi_num	1	Obi number	sched_exp_time	25000.000000	[s] Scheduled observation exposure time
ascdsver	8.4.4	Processing system revision	ontime	25148.799906373	Sum of GTIs [s]
caldsver	4.4.9	 	ontime2	25148.799906373	Sum of GTIs [s]
date	2012-05-08T04:05:46	Date and time of file creation	ontime3	25145.558915913	Sum of GTIs [s]
revision	2	Processing version of data	ontime5	25148.799906373	Sum of GTIs [s]
			ontime6	25145.558906138	Sum of GTIs [s]
			ontime7	25148.799906373	Sum of GTIs [s]
			ontime8	25142.31789577	Sum of GTIs [s]
			l1events	1216083	Number of level 1 events

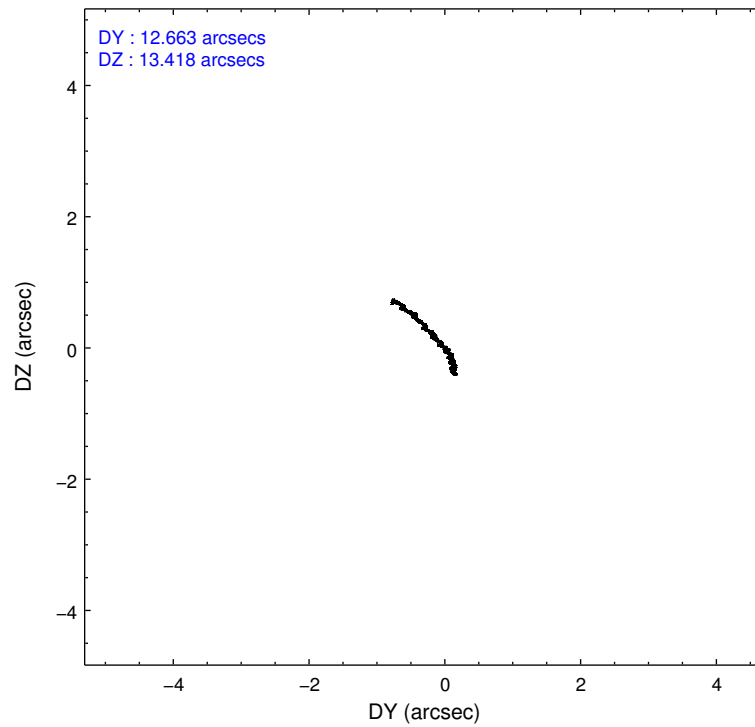
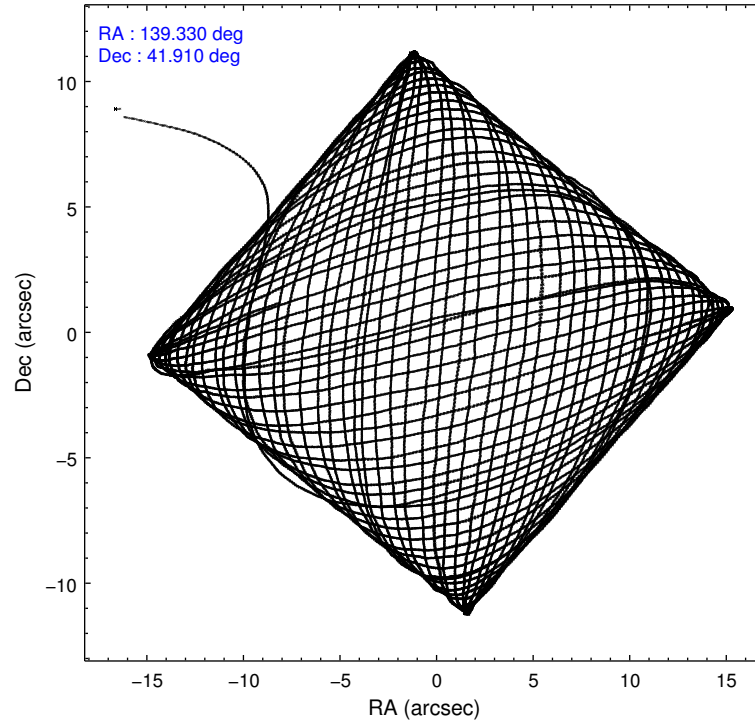
2.1.4 Events

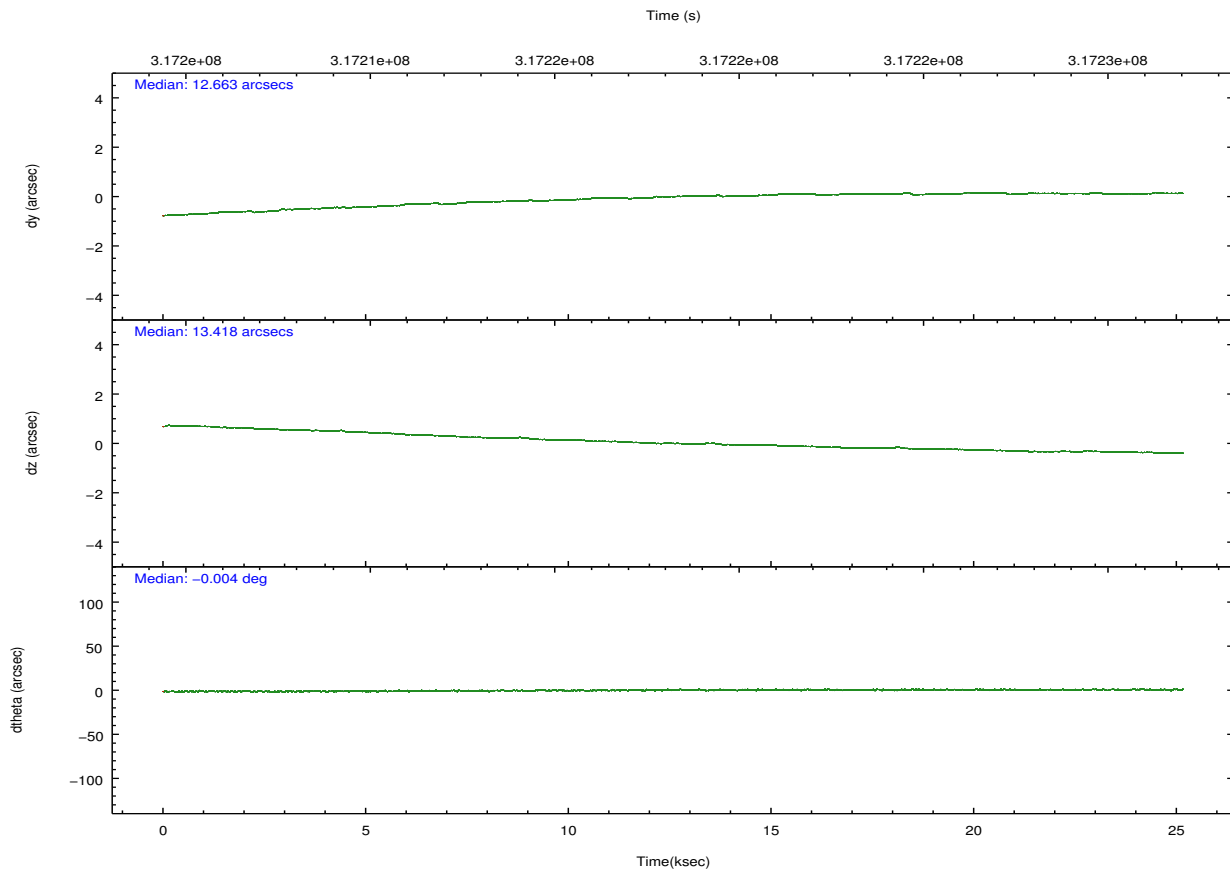
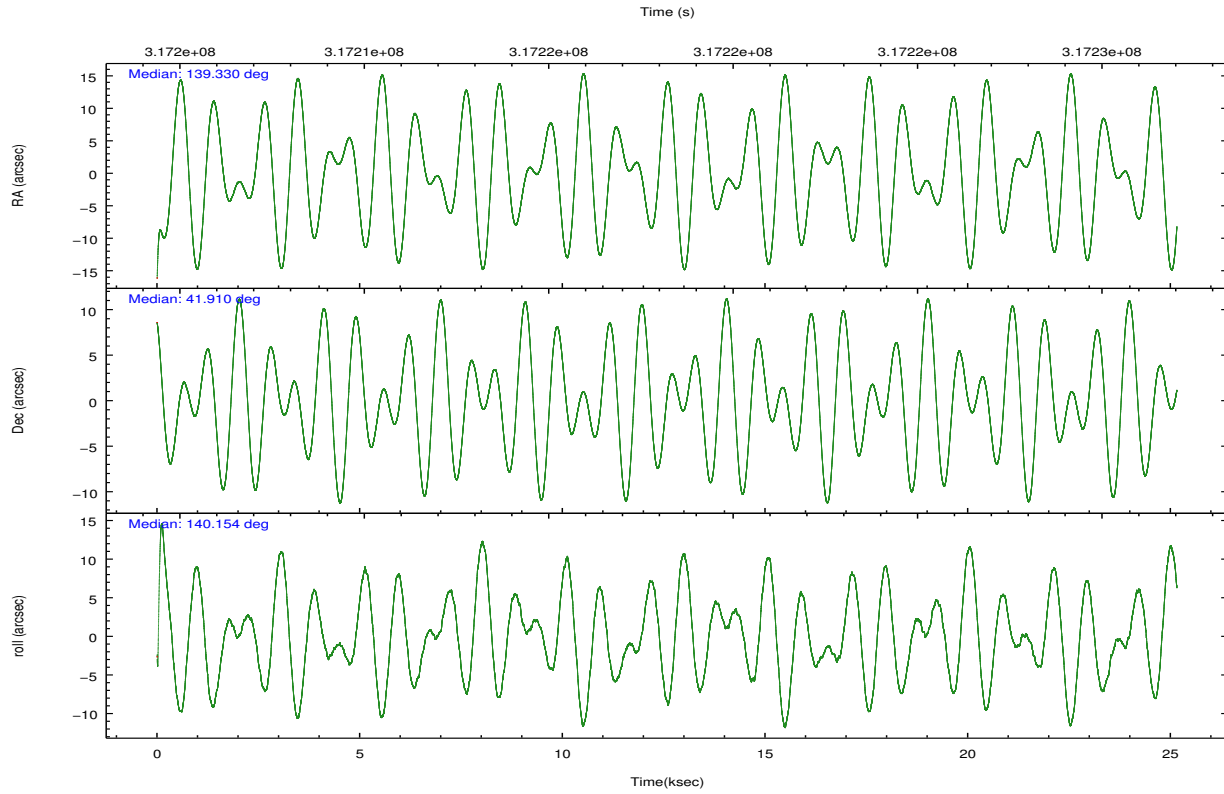
	ccd 2	ccd 3	ccd 5	ccd 6	ccd 7	ccd 8		ccd 2	ccd 3	ccd 5	ccd 6	ccd 7	ccd 8
level 1 events	197160	177679	247481	187419	177063	229281	grade 0 events	6536	5900	21508	6795	9146	15798
rejected events	179366	161065	113672	168595	89694	172821		3%	3%	8%	3%	5%	6%
rejected %	90%	90%	45%	89%	50%	75%	grade 1 events	119	106	648	92	259	169
								0%	0%	0%	0%	0%	0%
							grade 2 events	4445	3618	39879	4165	18557	13463
								2%	2%	16%	2%	10%	5%
							grade 3 events	1827	1989	5356	2036	8241	6341
								0%	1%	2%	1%	4%	2%
							grade 4 events	1892	1928	4866	2007	8286	5836
								0%	1%	1%	1%	4%	2%
							grade 5 events	5278	6274	19488	6333	18888	9759
								2%	3%	7%	3%	10%	4%
							grade 6 events	3129	3222	62409	3844	43315	15204
								1%	1%	25%	2%	24%	6%
							grade 7 events	173934	154642	93327	162147	70371	162711
								88%	87%	37%	86%	39%	70%

2.2 Compared Parameters

Parameter	Planned	Actual	Parameter	Planned	Actual
Instrument	ACIS	ACIS	Obspar format version number	7	7
Detector	ACIS-235678	ACIS-235678	Obspar file type	PREDICTED	ACTUAL
Grating	NONE	NONE	Obspar update status	NONE	UPDATED
Data mode	VFAINT	VFAINT	CCD I0 on	N	N
Observation mode	POINTING	POINTING	CCD I1 on	N	N
[deg] Pointing RA	139.366490	139.3301839440433	CCD I2 on	O1	Y
[deg] Pointing Dec	41.905458	41.90976342413352	CCD I3 on	O2	Y
[deg] Pointing Roll	139.980992	140.1618601295609	CCD S0 on	N	N
[mm] SIM focus pos	-0.684267	-0.6828225247311905	CCD S1 on	Y	Y
[mm] SIM defocus	0	0.001444936568705701	CCD S2 on	Y	Y
[mm] SIM translation stage pos	-190.132523	-190.1400660498719	CCD S3 on	Y	Y
[mm] SIM translation stage offset	0	0.00754346686406393	CCD S4 on	Y	Y
[s] Observation start time (MET)	317205794.184000	317204713.05887	CCD S5 on	N	N
Observation start date	2008-01-20T08:42:09	2008-01-20T08:25:13	Number of optional ACIS chips dropped	0	0
[s] Observation end time (MET)	317230794.184000	317231695.67268	On-chip summing requested	N	N
Observation end date	2008-01-20T15:38:49	2008-01-20T15:54:55	Subarray requested	NONE	NONE
Read mode	TIMED	TIMED	Alternating exposures requested	N	N
			[s] Primary exposure time	0.000000	3.2

2.3 Aspect



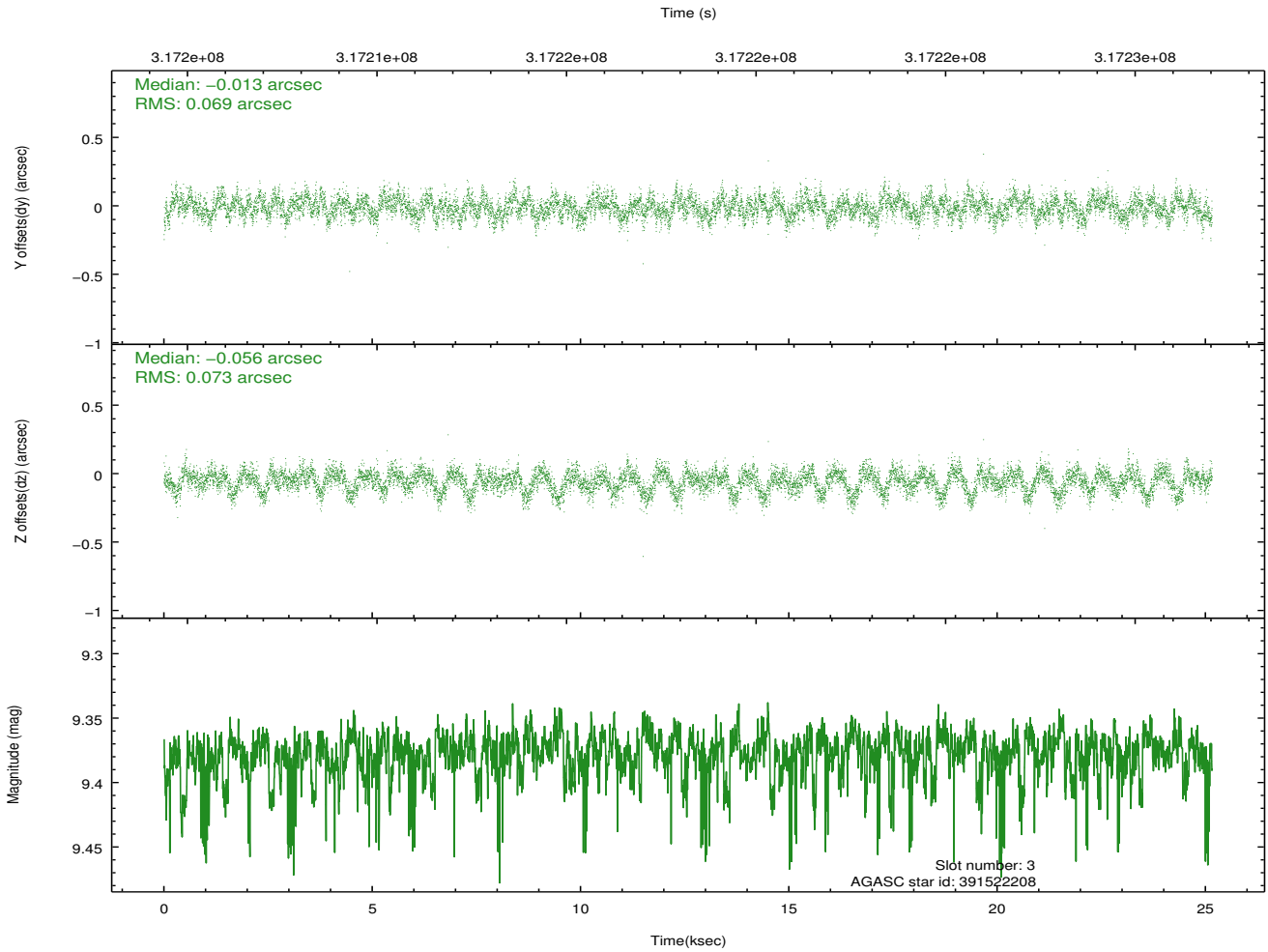
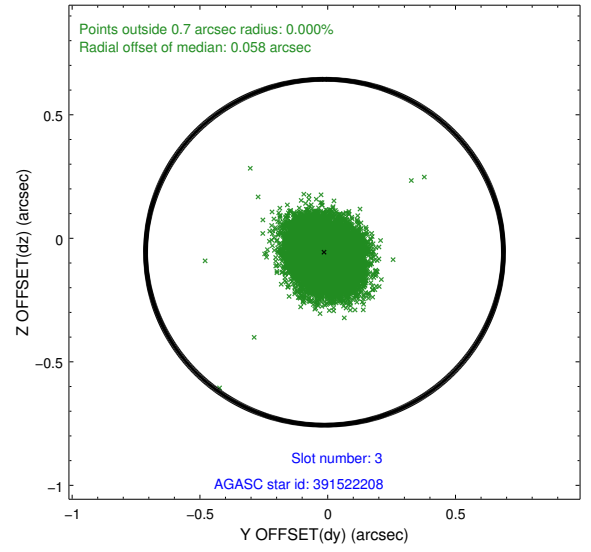
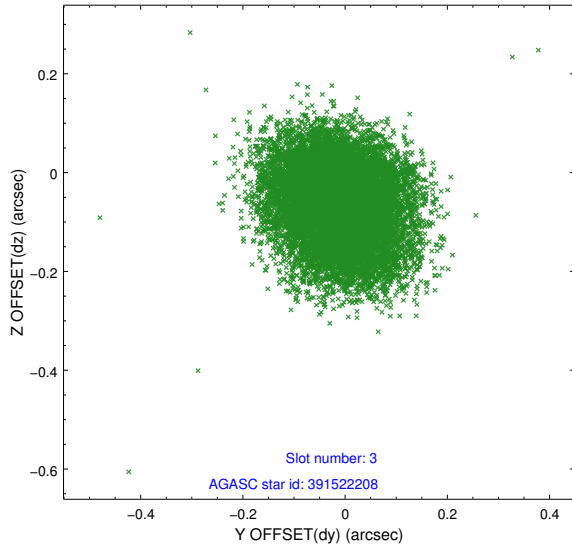


Slot Statistics

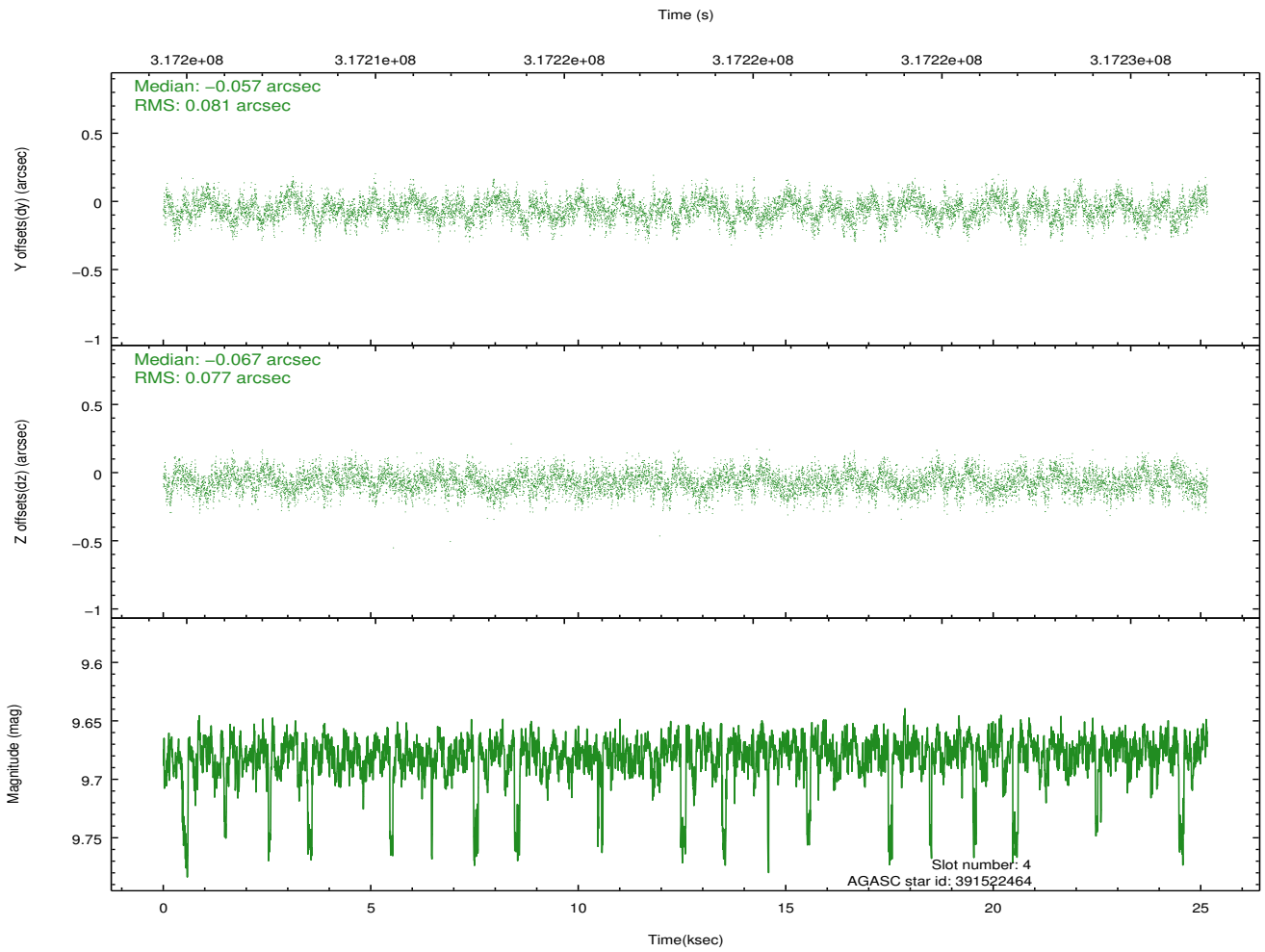
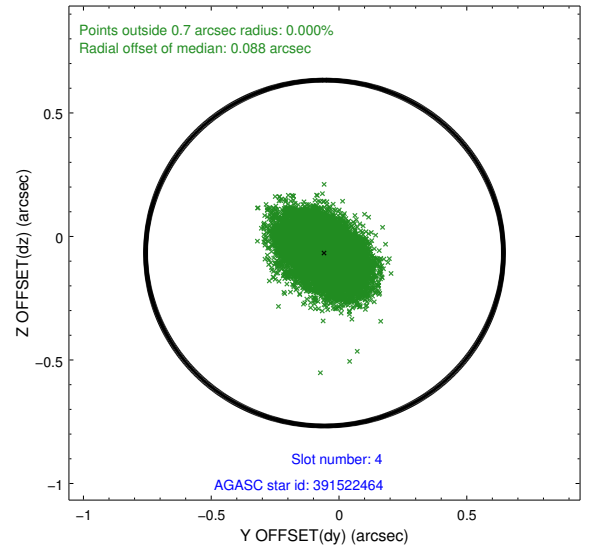
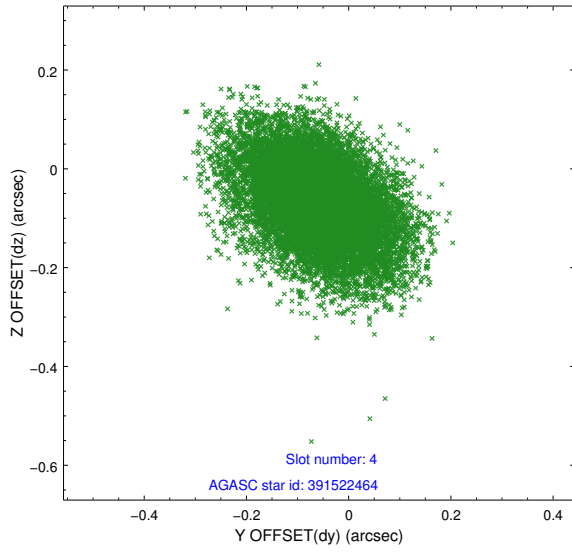
slot	status	id	mag	n_pts	med_dy	med_dz	dr1	dr2	ra	dec	mean_y	mean_z
0	FID	ACIS-S-2	7.09	6136	-0.021	-0.050	0.011	0.022	0.000000	0.000000	-765.46	-1734.88
1	FID	ACIS-S-4	7.19	6136	0.125	0.023	0.011	0.019	0.000000	0.000000	2147.91	173.56
2	FID	ACIS-S-5	7.23	6136	-0.133	0.034	0.010	0.016	0.000000	0.000000	-1818.26	167.37
3	GUIDE	391522208	9.38	12254	-0.013	-0.056	0.107	0.171	138.687550	41.907554	1402.55	1158.66
4	GUIDE	391522464	9.68	12219	-0.057	-0.067	0.118	0.197	138.966017	41.666181	272.32	1350.48
5	GUIDE	391525560	8.25	12266	-0.141	0.014	0.072	0.117	139.749089	41.698861	-1264.31	-93.42
6	GUIDE	391525768	9.29	12213	0.333	-0.024	0.093	0.148	139.553312	42.045291	-57.92	-707.01
7	GUIDE	391906008	8.35	12267	-0.117	0.145	0.065	0.101	139.782047	42.516852	573.01	-2396.47

2.4 Star Slots

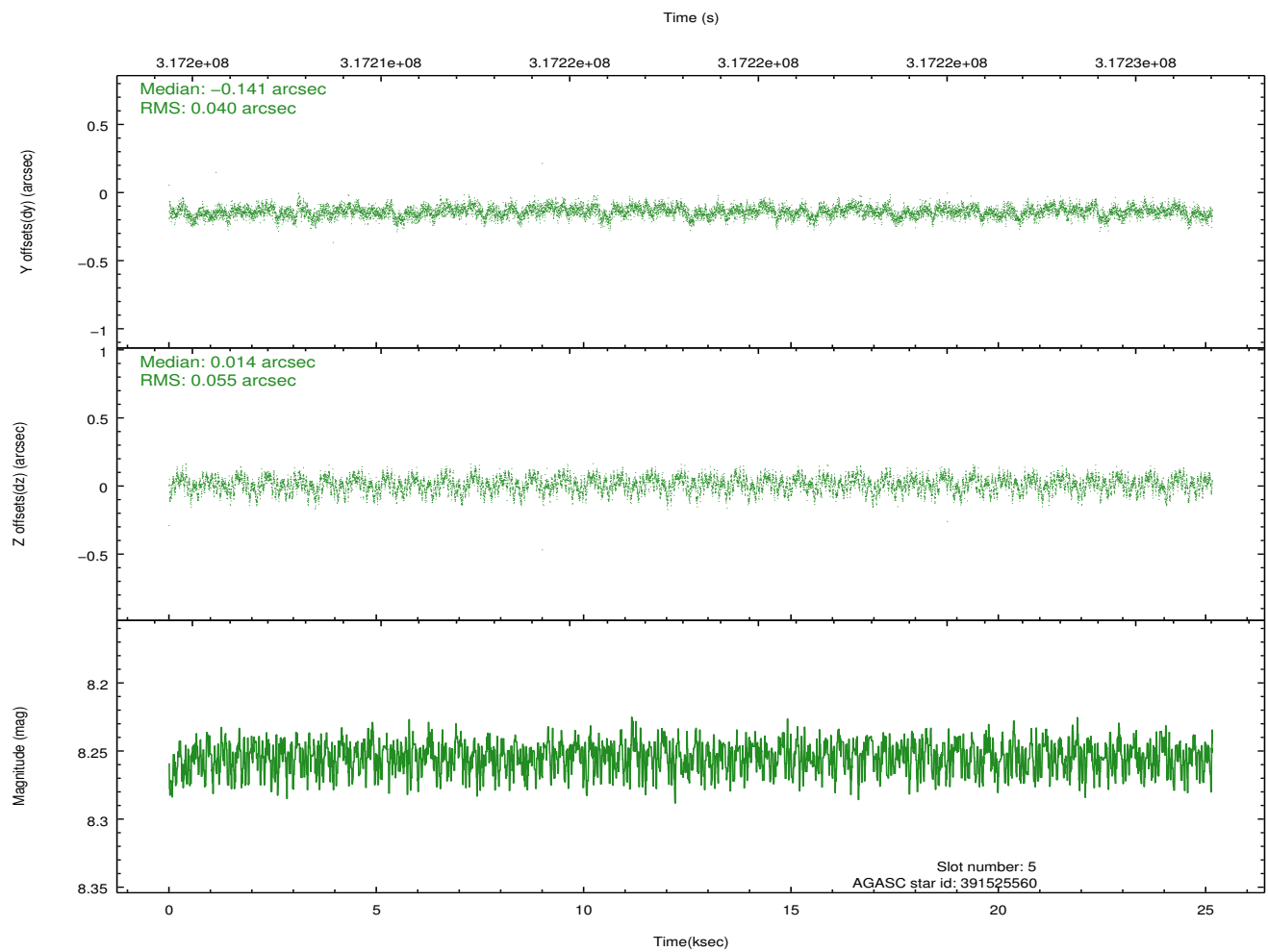
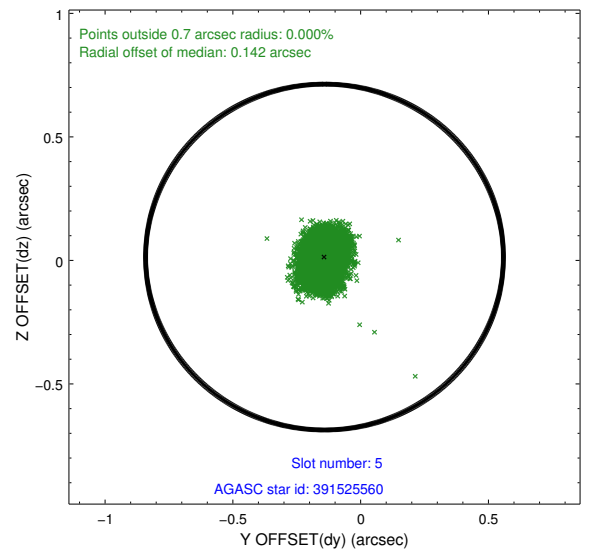
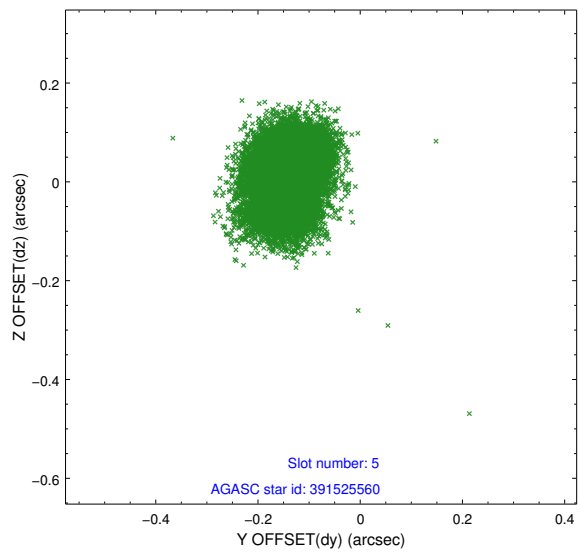
2.4.1 Slot 3



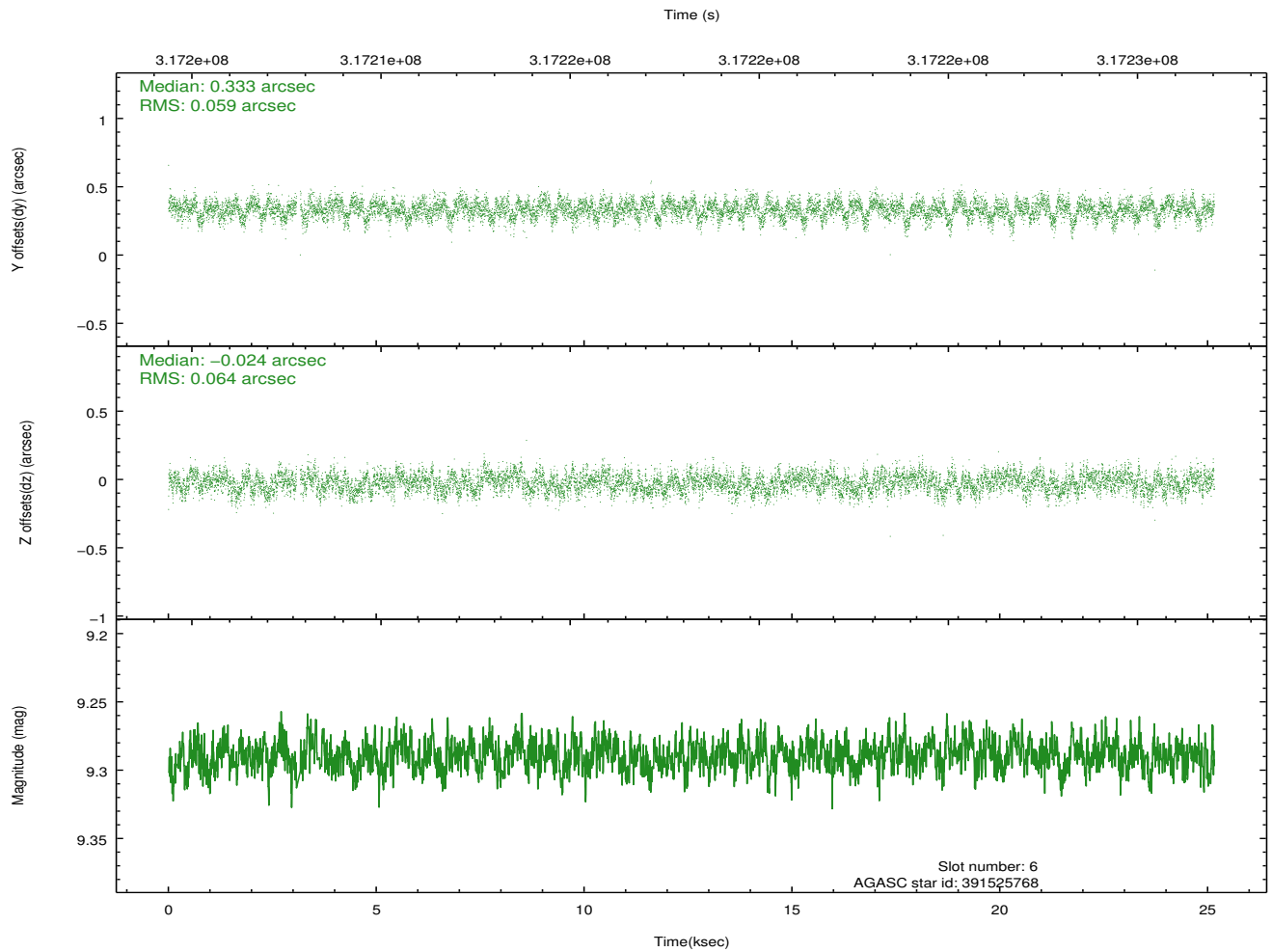
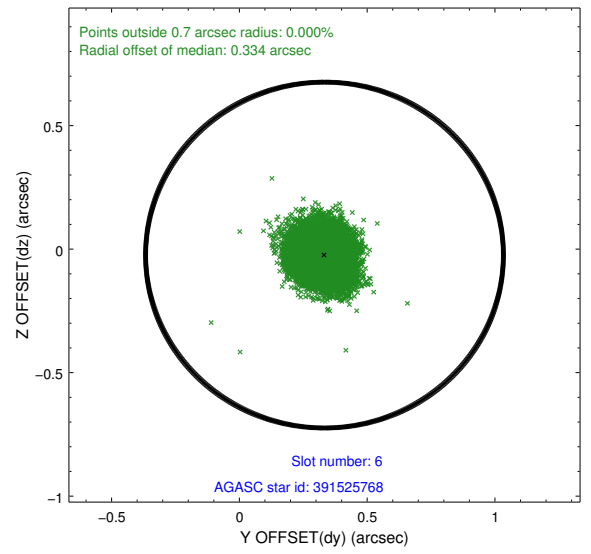
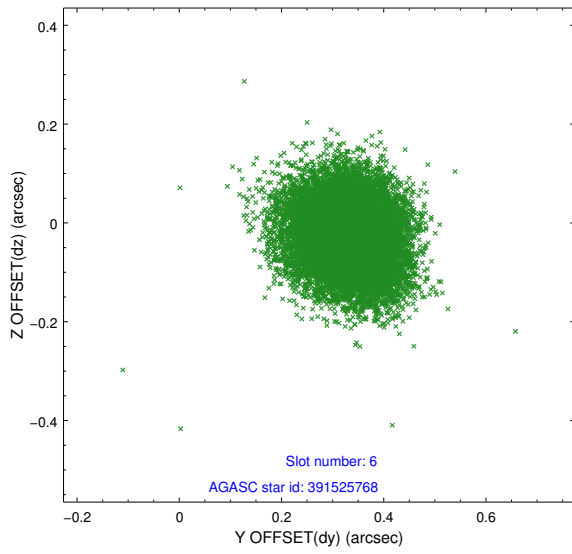
2.4.2 Slot 4



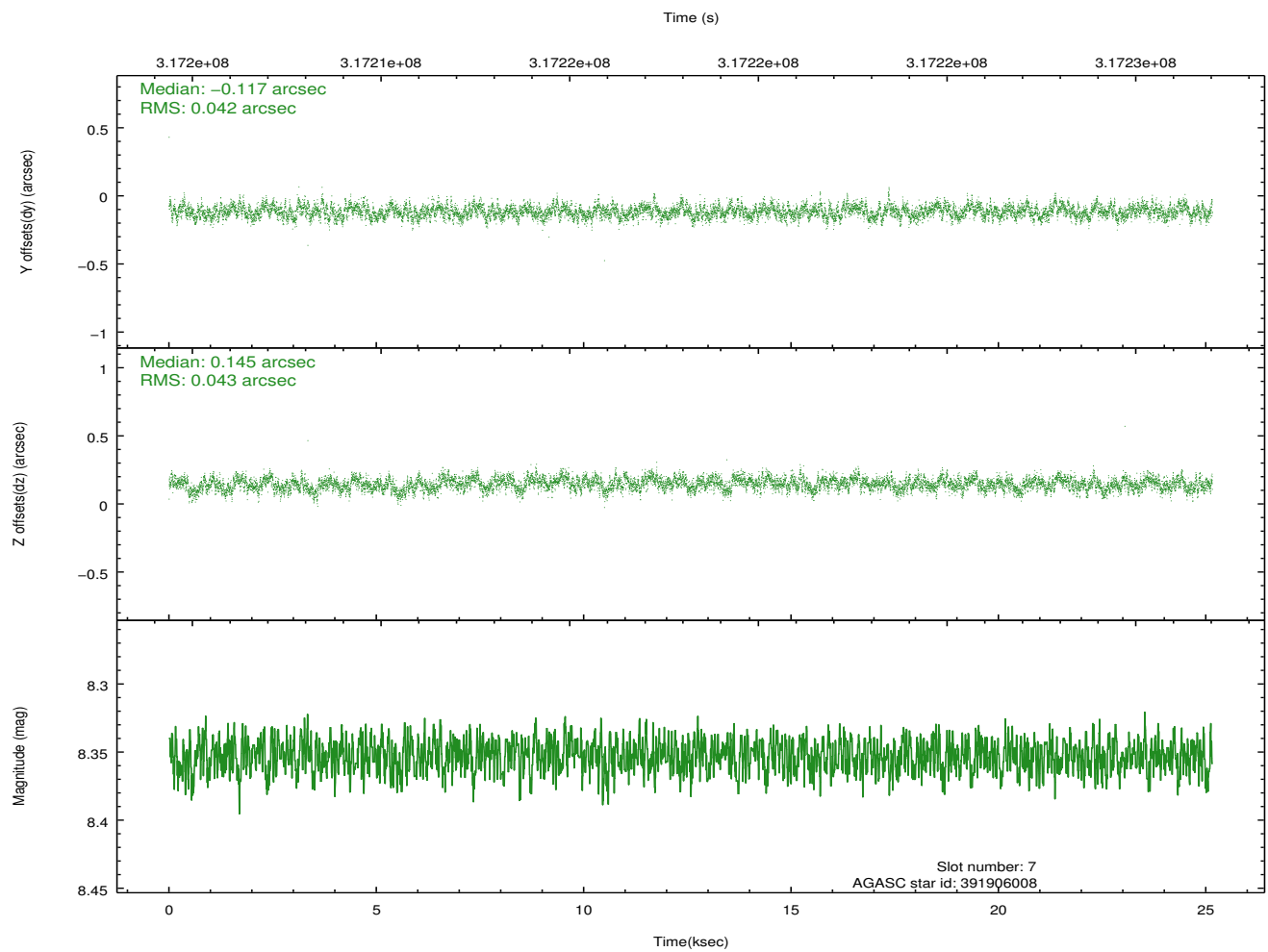
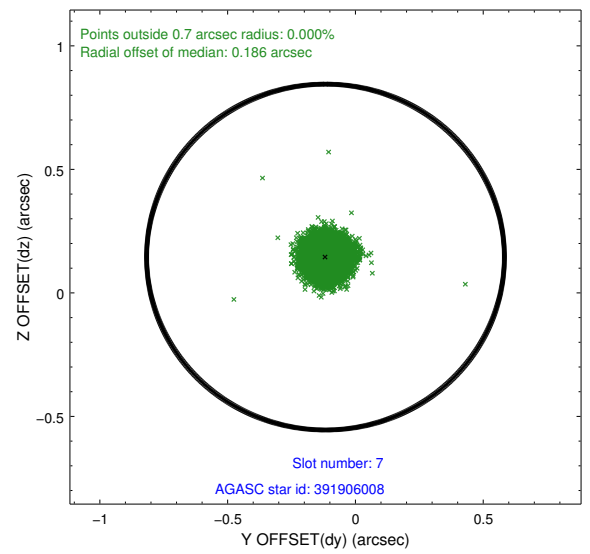
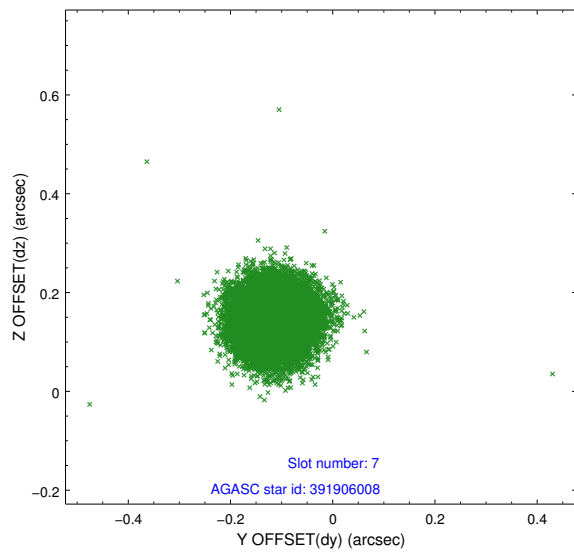
2.4.3 Slot 5



2.4.4 Slot 6

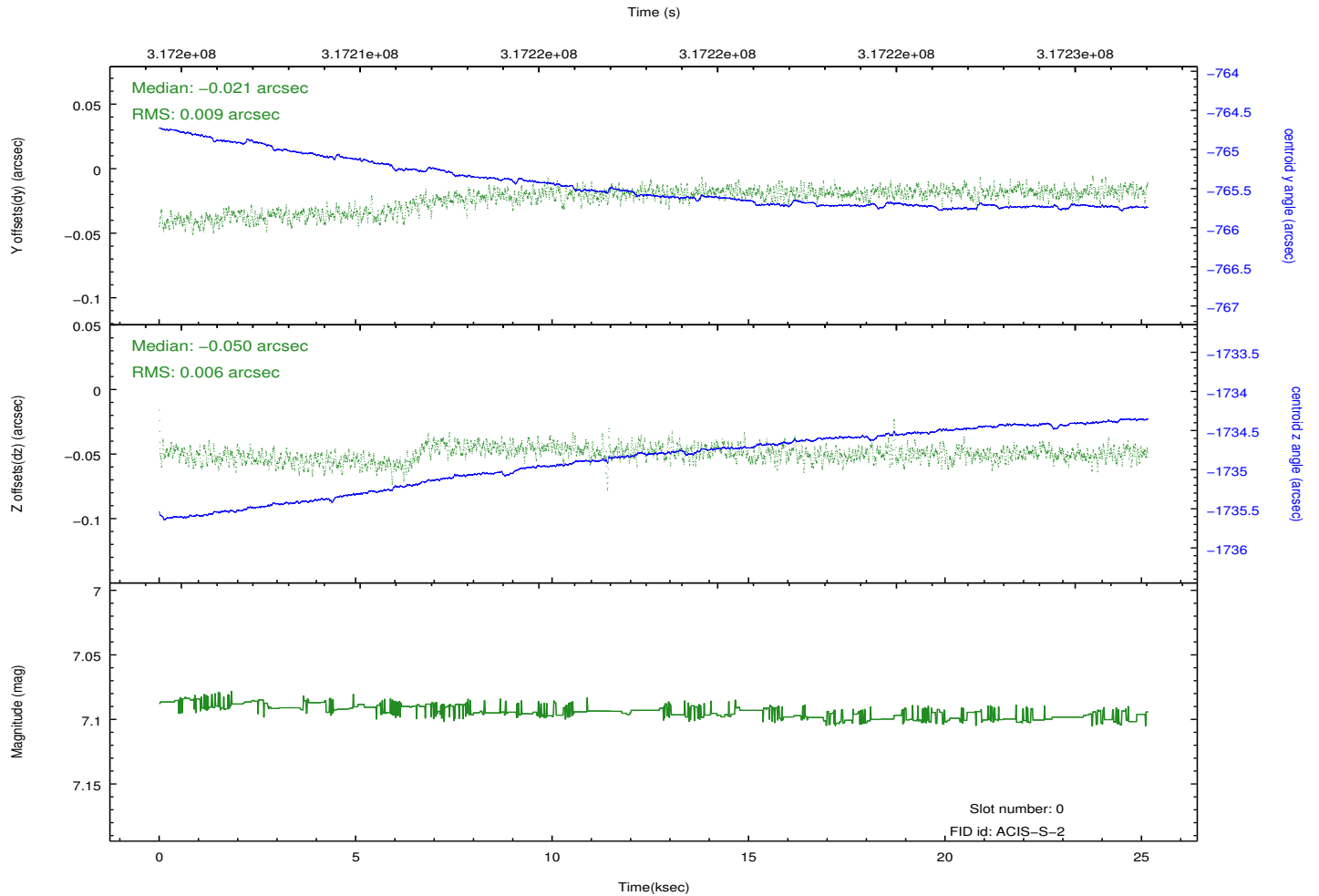
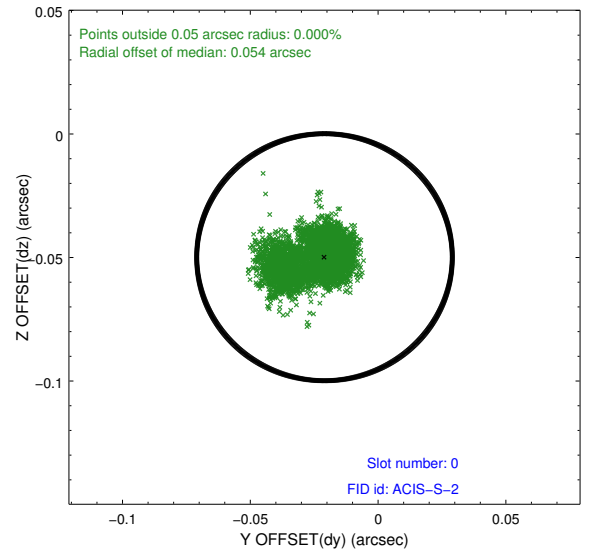
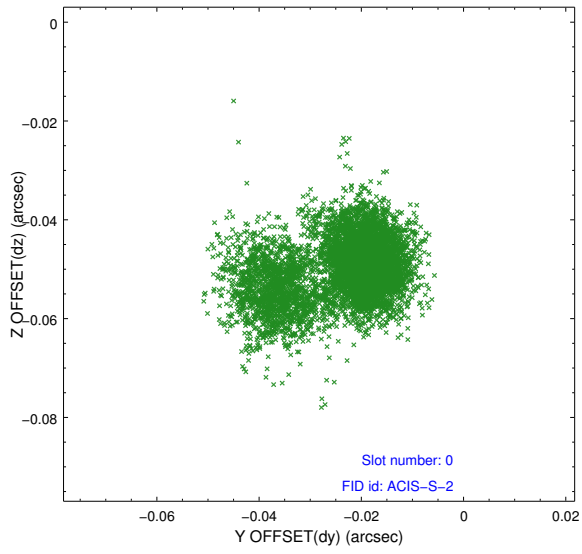


2.4.5 Slot 7

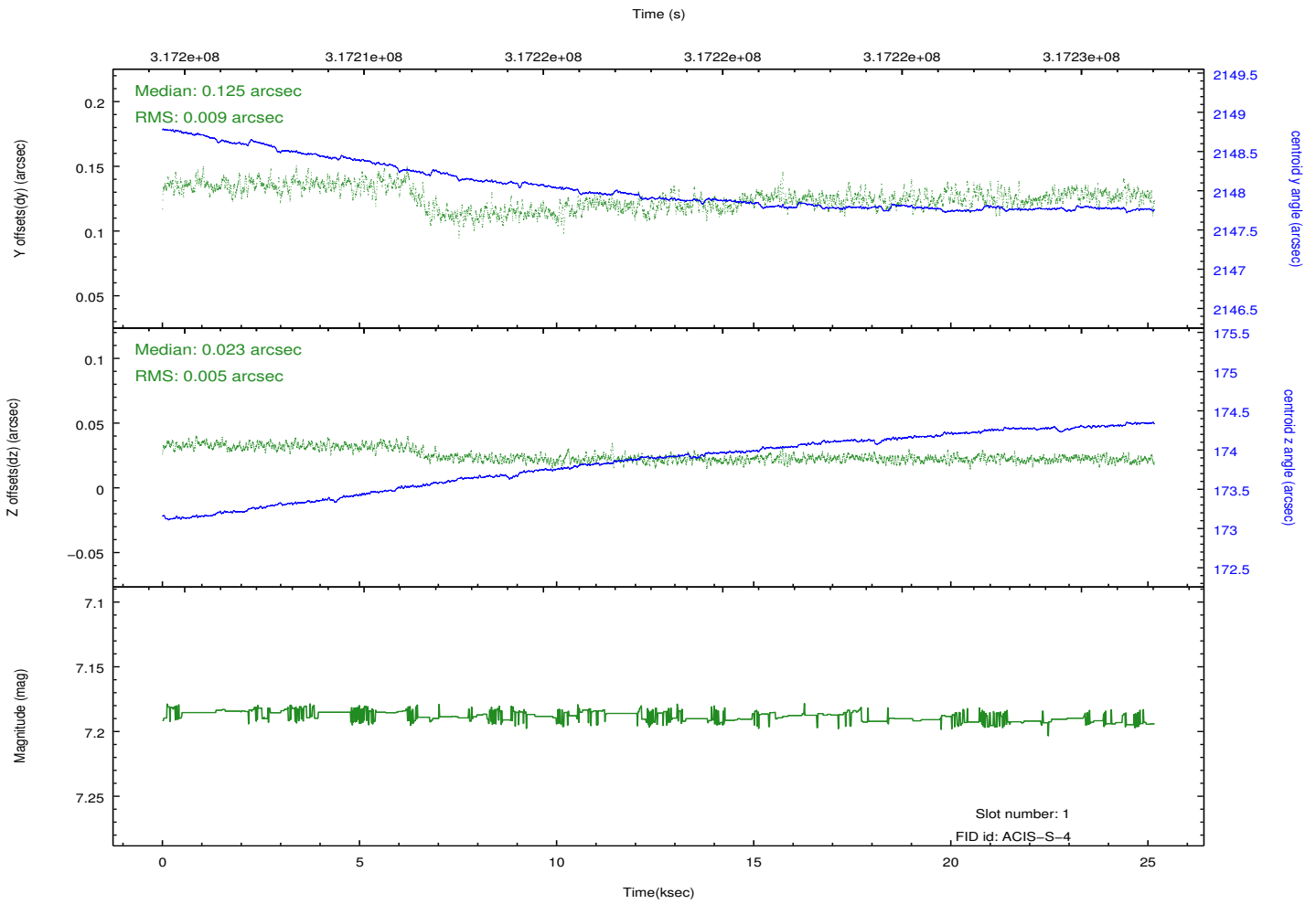
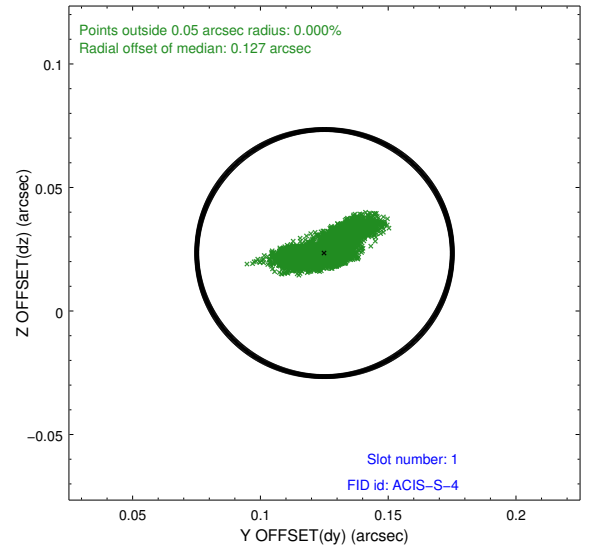
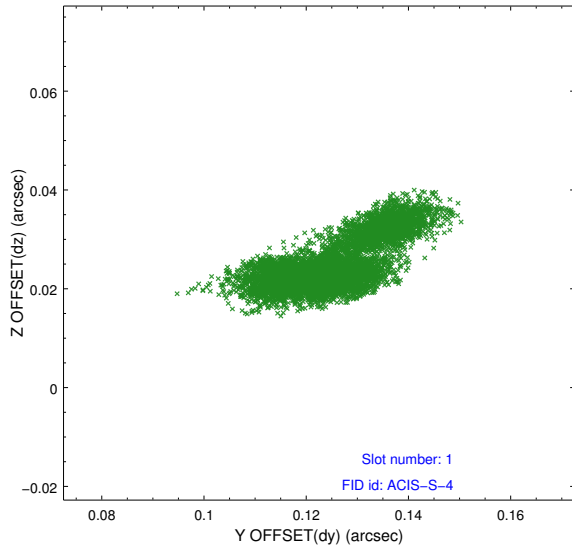


2.5 FID Slots

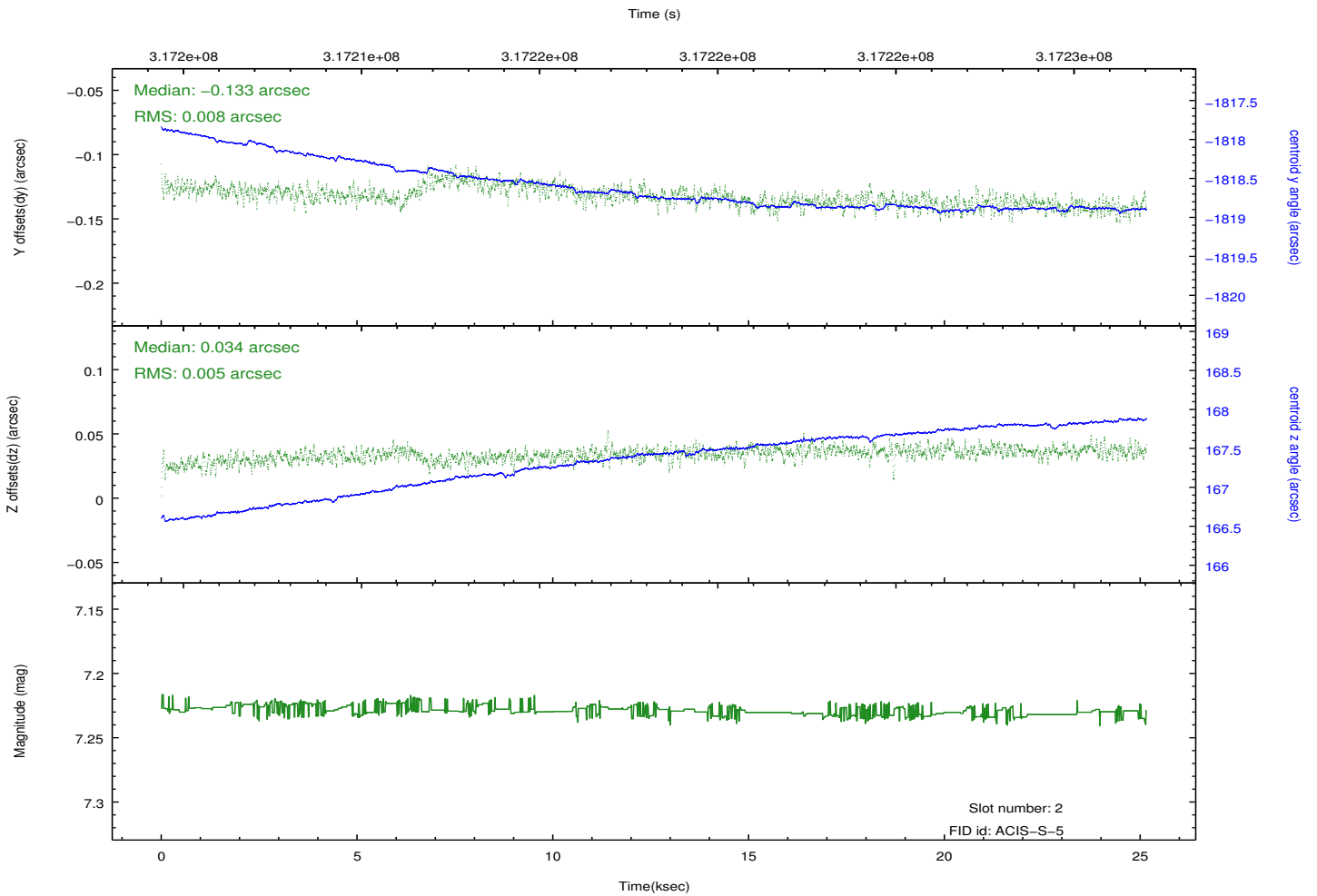
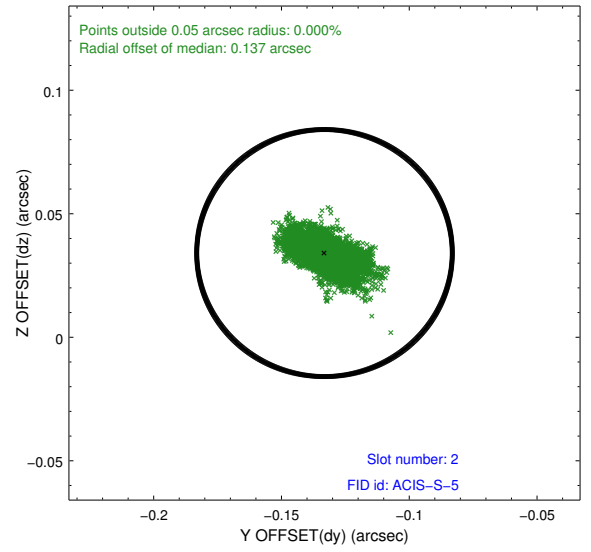
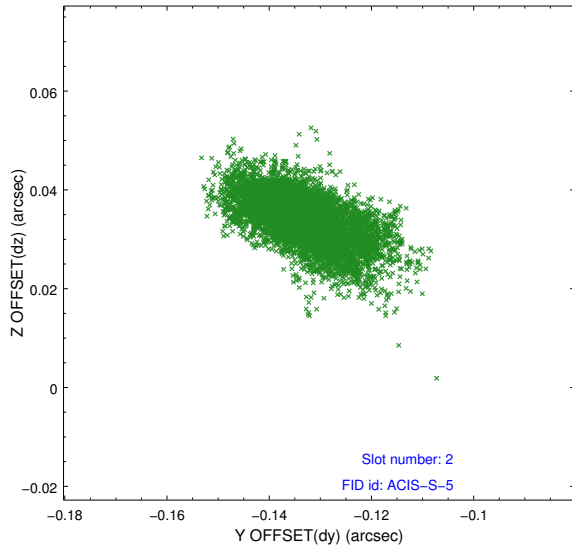
2.5.1 Slot 0



2.5.2 Slot 1



2.5.3 Slot 2



A Summary

A.1 Status

V&V Scientist	Jen Lauer
V&V Date (YYYY-MM-DD)	2012.05.10
V&V Edition	1
V&V Disposition and Status	OK
V&V Charge Time	25.1487999

A.2 Comments