

V&V Reference Report

L2 ASCDS Version : 8.4.4

Observation 9123 - L2 Version 2
Chandra X-Ray Center

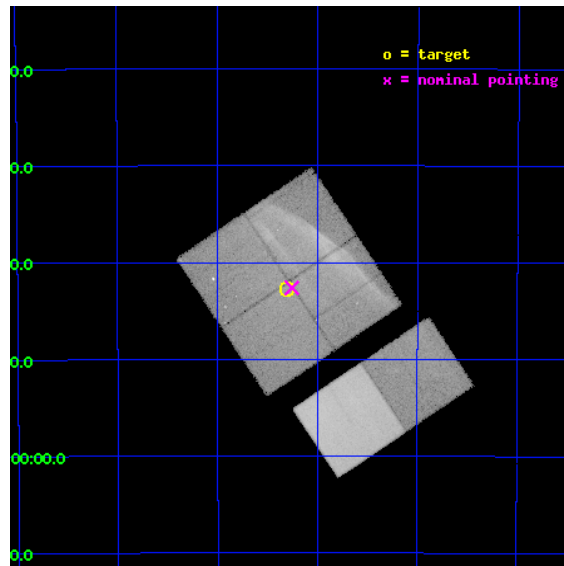
L2 Processing Date : May 20 2012

Contents

1	Front	2
2	OBI	3
2.1	OBI	3
2.1.1	Images	3
2.1.2	Bias	3
2.1.3	Parameters	4
2.1.4	Events	4
2.2	Compared Parameters	5
2.3	Aspect	6
2.4	Star Slots	9
2.4.1	Slot 3	9
2.4.2	Slot 4	10
2.4.3	Slot 5	11
2.4.4	Slot 6	12
2.4.5	Slot 7	13
2.5	FID Slots	14
2.5.1	Slot 0	14
2.5.2	Slot 1	15
2.5.3	Slot 2	16
A	Summary	17
A.1	Status	17
A.2	Comments	17

1 Front

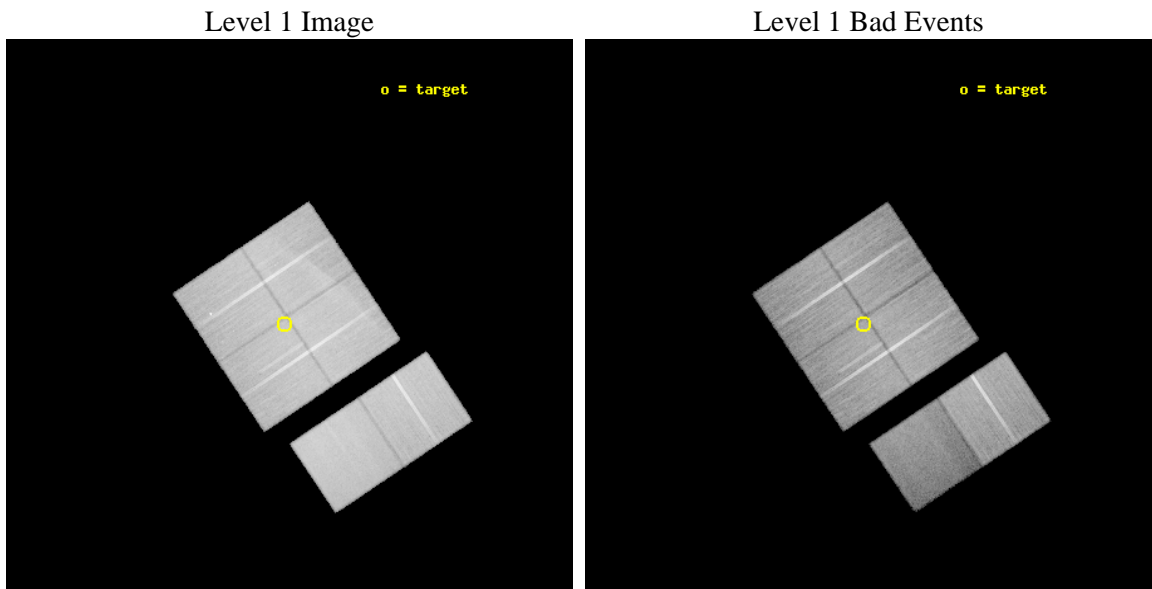
seq_num	500985	Sequence number
obs_id	9123	Observation id
title	Measuring the Expansion Rate of G266.2-1.2	Proposal title
observer	Dr. Glenn Allen	Principal investigator
object	G266.2-1.2 NORTH	Source name
dtcycle	0	
cycle	P	events from which exps? Prim/Second/Both
ra_targ	132.325	Observer's specified target RA [deg]
dec_targ	-45.712778	Observer's specified target Dec [deg]
ra_nom	132.31391841368	Nominal RA [deg]
dec_nom	-45.710483364688	Nominal Dec [deg]
roll_nom	146.20074401006	Nominal Roll [deg]
revision	2	Processing version of data
ontime	40156.799850464	Sum of GTIs [s]
livetime	39648.310271235	Livetime [s]
ontime0	40156.799850464	Sum of GTIs [s]
ontime1	40156.799850464	Sum of GTIs [s]
ontime2	40143.835989237	Sum of GTIs [s]
ontime3	40156.799850464	Sum of GTIs [s]
ontime6	40153.558850288	Sum of GTIs [s]
ontime7	40156.799850464	Sum of GTIs [s]
l2events	519017	Number of level 2 events



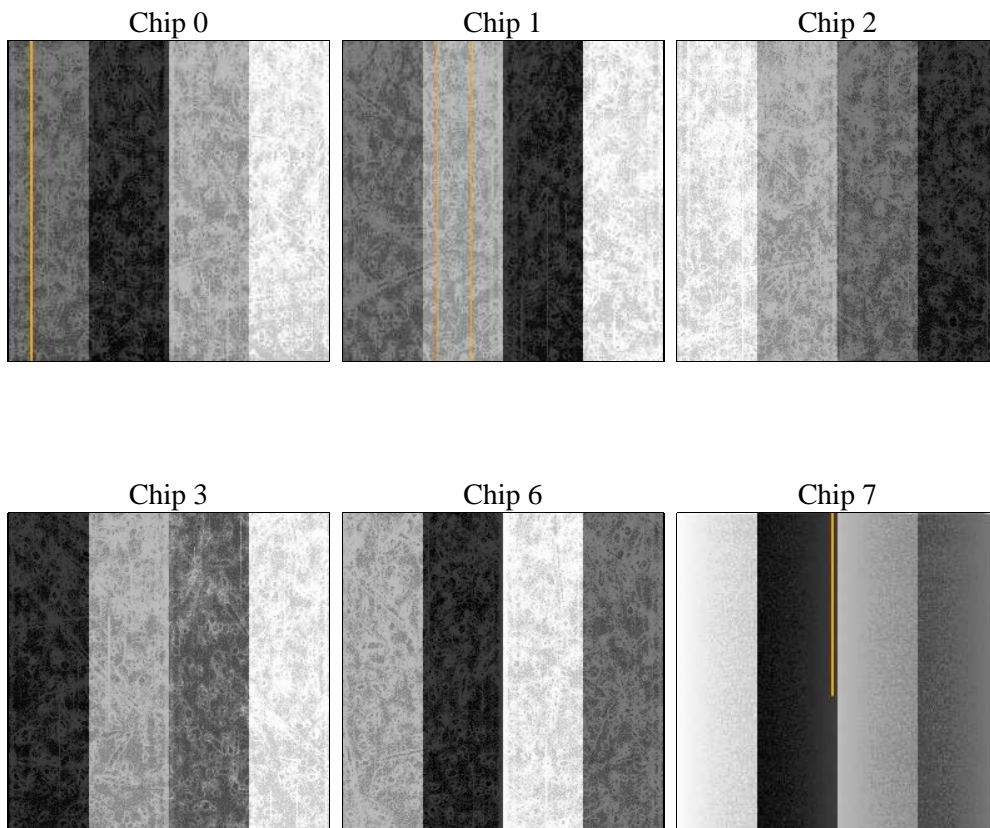
2 OBI

2.1 OBI

2.1.1 Images



2.1.2 Bias



2.1.3 Parameters

obi_num	1	Obi number	sched_exp_time	40000.000000	[s] Scheduled observation exposure time
ascdsver	8.4.4	Processing system revision	ontime	40156.799850464	Sum of GTIs [s]
caldbver	4.4.9	 	ontime0	40156.799850464	Sum of GTIs [s]
date	2012-05-20T23:05:02	Date and time of file creation	ontime1	40156.799850464	Sum of GTIs [s]
revision	2	Processing version of data	ontime2	40143.835989237	Sum of GTIs [s]
			ontime3	40156.799850464	Sum of GTIs [s]
			ontime6	40153.558850288	Sum of GTIs [s]
			ontime7	40156.799850464	Sum of GTIs [s]
			l1events	2135701	Number of level 1 events

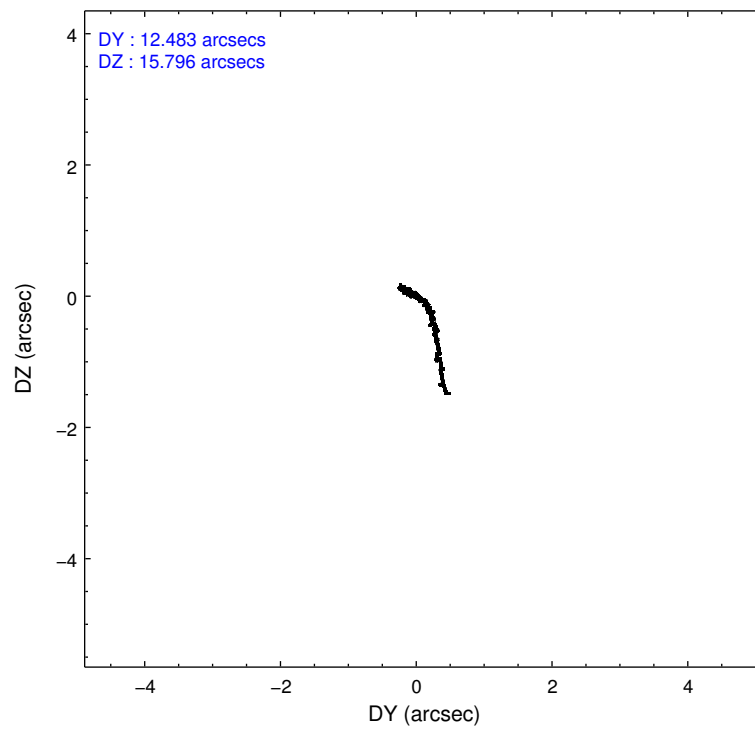
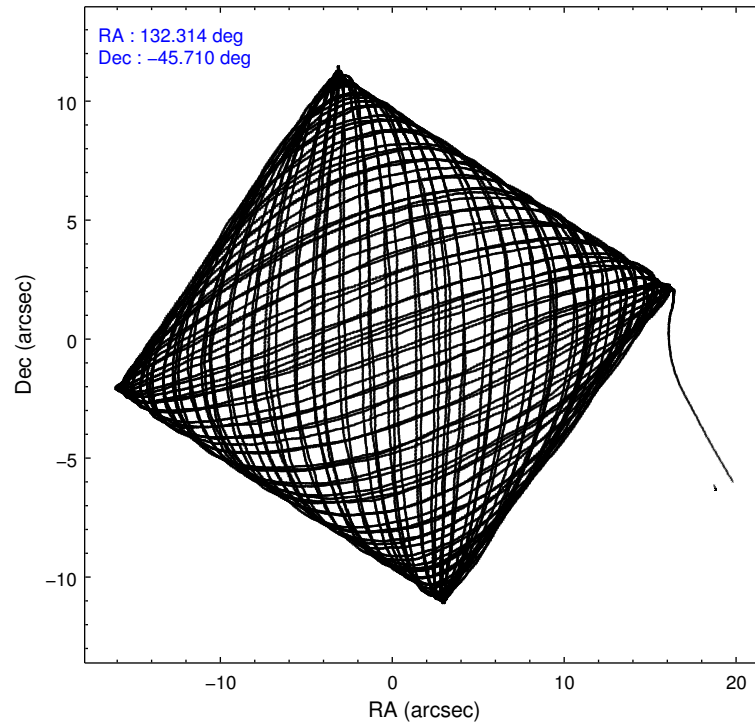
2.1.4 Events

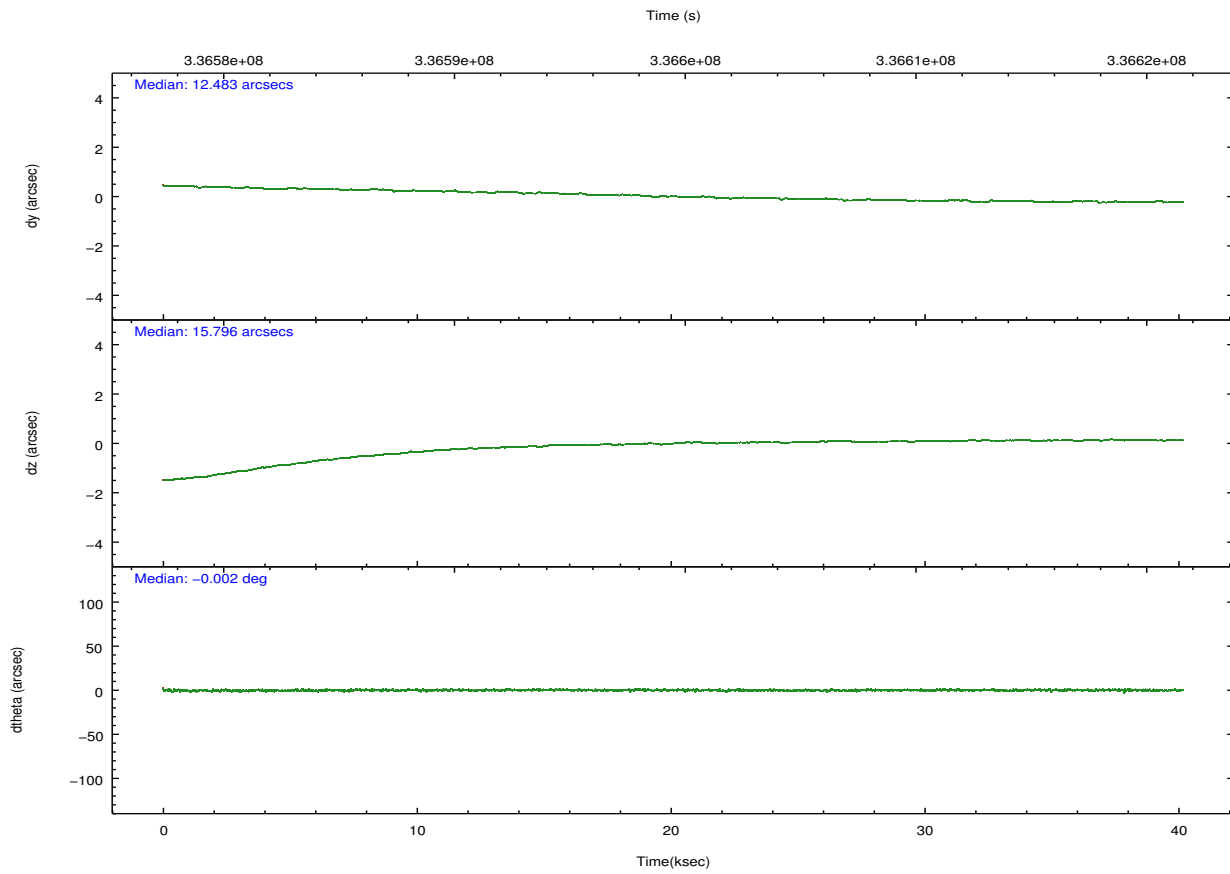
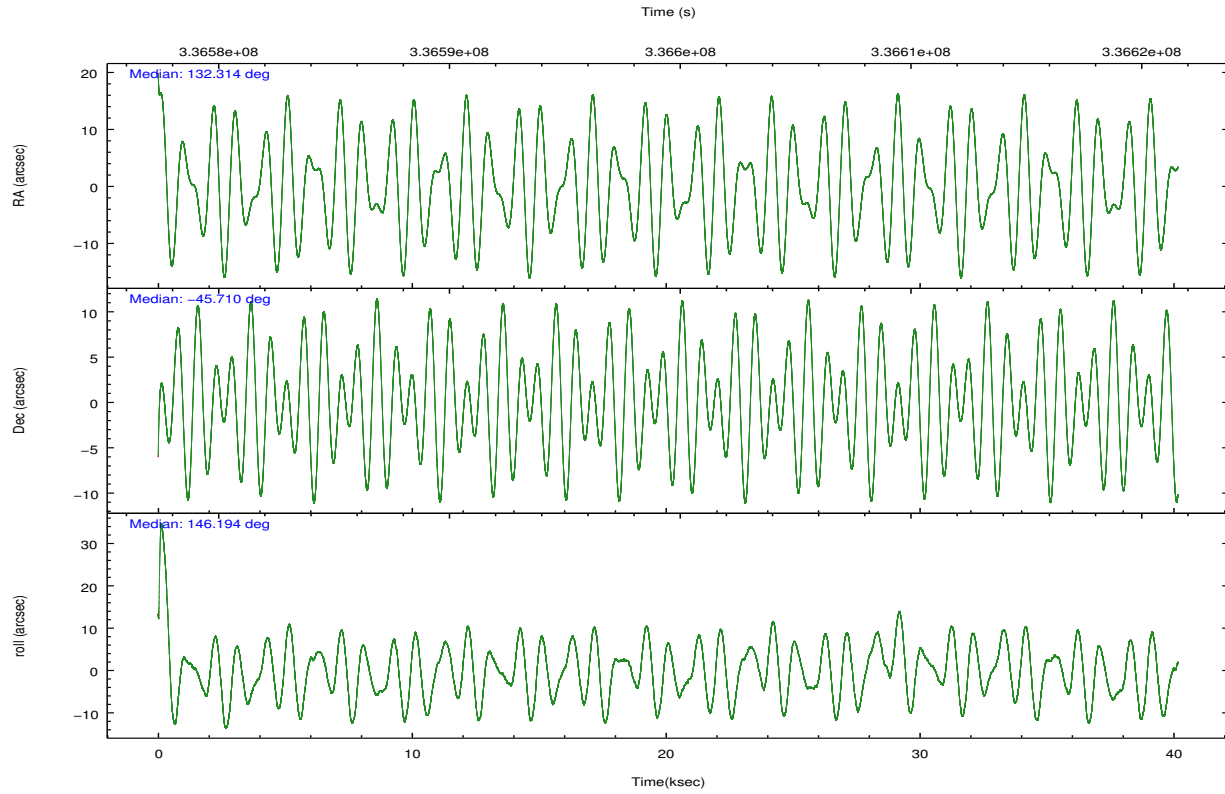
	ccd 0	ccd 1	ccd 2	ccd 3	ccd 6	ccd 7		ccd 0	ccd 1	ccd 2	ccd 3	ccd 6	ccd 7
level 1 events	353328	321096	389295	338819	355131	378032	grade 0 events	59105	37934	56154	33960	31709	57607
rejected events	266694	258998	307102	283960	300292	155180		16%	11%	14%	10%	8%	15%
rejected %	75%	80%	78%	83%	84%	41%	grade 1 events	443	304	462	309	278	470
								0%	0%	0%	0%	0%	0%
							grade 2 events	12398	9518	11683	8304	9144	47384
								3%	2%	3%	2%	2%	12%
							grade 3 events	4607	4091	4367	3581	3710	20258
								1%	1%	1%	1%	1%	5%
							grade 4 events	4479	4147	4314	3642	3745	19947
								1%	1%	1%	1%	1%	5%
							grade 5 events	9244	10362	8802	11011	11232	32595
								2%	3%	2%	3%	3%	8%
							grade 6 events	6496	6793	6119	5734	6902	79071
								1%	2%	1%	1%	1%	20%
							grade 7 events	256556	247947	297394	272278	288411	120700
								72%	77%	76%	80%	81%	31%

2.2 Compared Parameters

Parameter	Planned	Actual	Parameter	Planned	Actual
Instrument	ACIS	ACIS	Obspar format version number	7	7
Detector	ACIS-012367	ACIS-012367	Obspar file type	PREDICTED	ACTUAL
Grating	NONE	NONE	Obspar update status	NONE	UPDATED
Data mode	VFAINT	VFAINT	CCD I0 on	Y	Y
Observation mode	POINTING	POINTING	CCD I1 on	Y	Y
[deg] Pointing RA	132.353205	132.3139184136776	CCD I2 on	Y	Y
[deg] Pointing Dec	-45.712179	-45.71048336468765	CCD I3 on	Y	Y
[deg] Pointing Roll	146.020190	146.2007440100648	CCD S0 on	N	N
[mm] SIM focus pos	-0.782348	-0.7809083437167272	CCD S1 on	N	N
[mm] SIM defocus	0	0.001439871863259334	CCD S2 on	O2	Y
[mm] SIM translation stage pos	-233.592463	-233.5874344608287	CCD S3 on	O1	Y
[mm] SIM translation stage offset	0	-0.005018542100998502	CCD S4 on	N	N
[s] Observation start time (MET)	336579547.184000	336578360.75115	CCD S5 on	N	N
Observation start date	2008-08-31T14:18:02	2008-08-31T13:59:20	Number of optional ACIS chips dropped	0	0
[s] Observation end time (MET)	336619547.184000	336619910.66569	On-chip summing requested	N	N
Observation end date	2008-09-01T01:24:42	2008-09-01T01:31:50	Subarray requested	NONE	NONE
Read mode	TIMED	TIMED	Alternating exposures requested	N	N
			[s] Primary exposure time	0.000000	3.2

2.3 Aspect





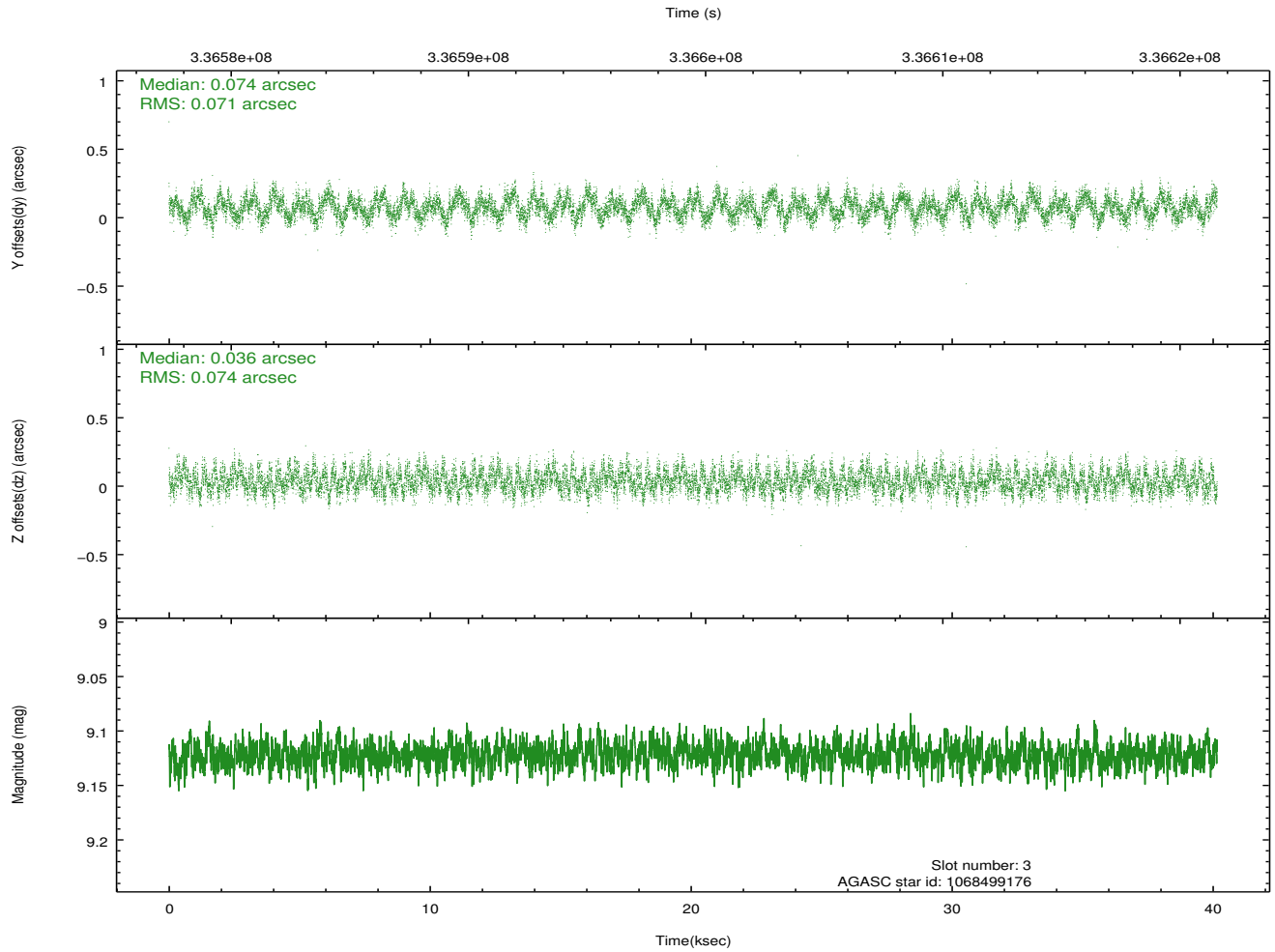
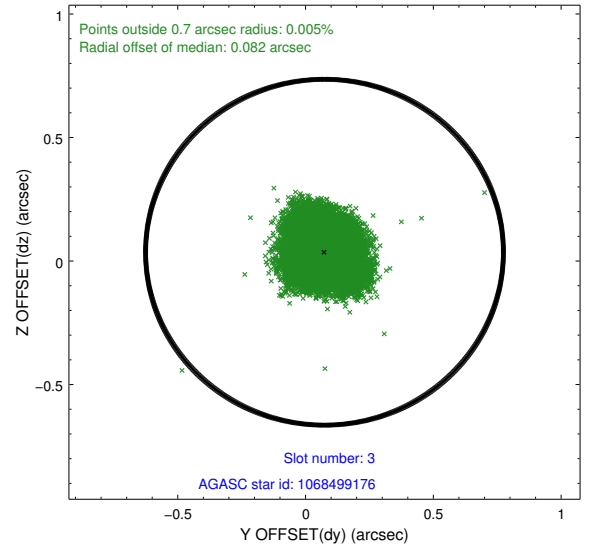
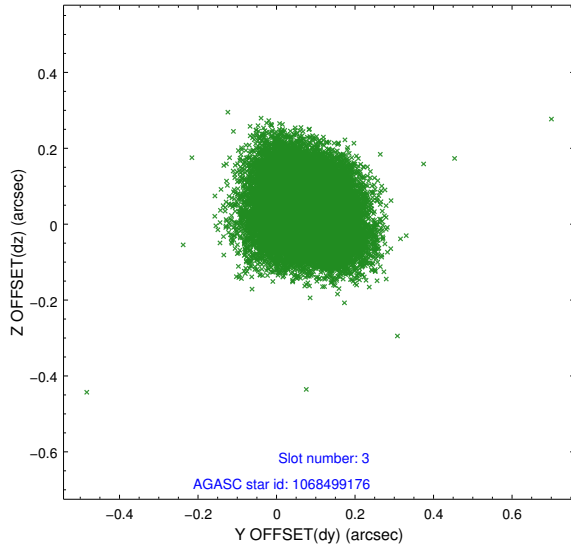
Slot Statistics

slot	status	id	mag	n_pts	med_dy	med_dz	dr1	dr2	ra	dec	mean_y	mean_z
0	FID	ACIS-I-4	6.93	9797	0.133	0.036	0.013	0.026	0.000000	0.000000	2147.10	1060.71
1	FID	ACIS-I-5	6.99	9797	-0.236	0.028	0.014	0.031	0.000000	0.000000	-1821.21	1058.50
2	FID	ACIS-I-6	7.00	9797	0.005	0.004	0.014	0.027	0.000000	0.000000	392.54	1702.80
3	GUIDE	1068499176	9.12	19579	0.074	0.036	0.111	0.172	132.818780	-45.676312	-900.40	-758.60
4	GUIDE	1068500456	8.20	19581	-0.036	-0.020	0.086	0.139	132.858439	-45.622941	-877.08	-974.00
5	GUIDE	1068502728	9.06	19569	-0.078	-0.006	0.091	0.149	132.319067	-45.349746	801.13	-1033.38
6	GUIDE	1068501048	9.37	19576	0.018	0.097	0.115	0.182	133.155472	-45.290455	-841.09	-2385.94
7	GUIDE	1068508160	9.69	19543	0.032	-0.107	0.165	0.253	132.397905	-46.388695	-1453.29	1957.41

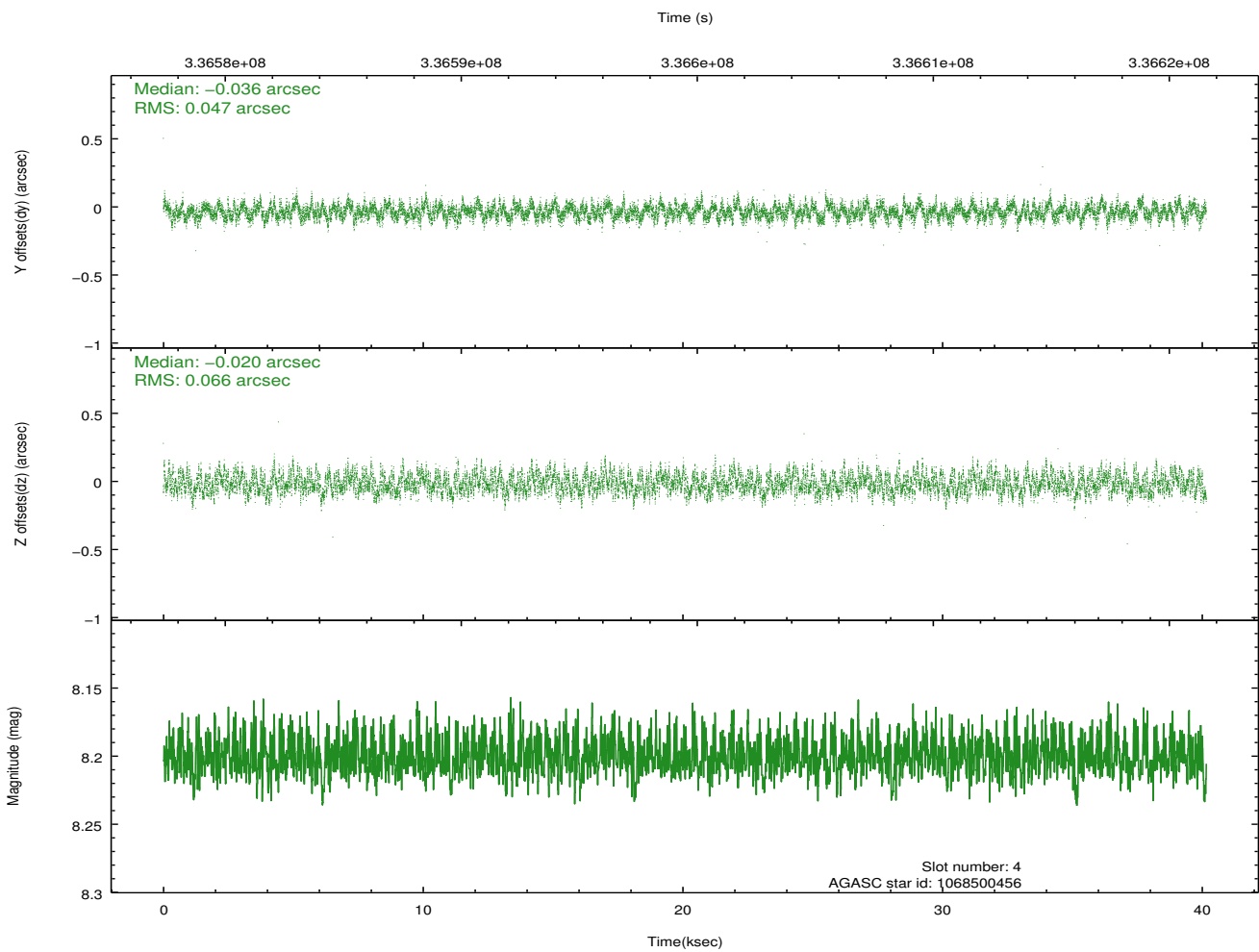
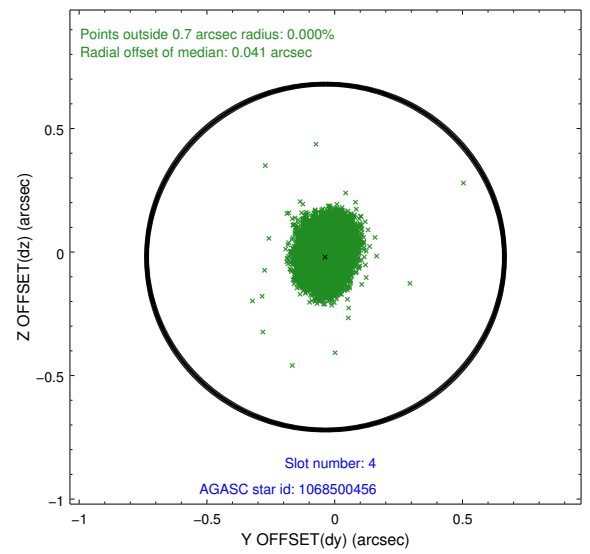
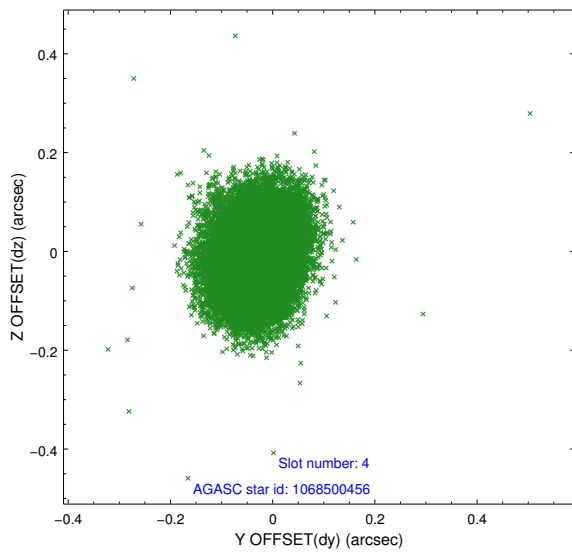
∞

2.4 Star Slots

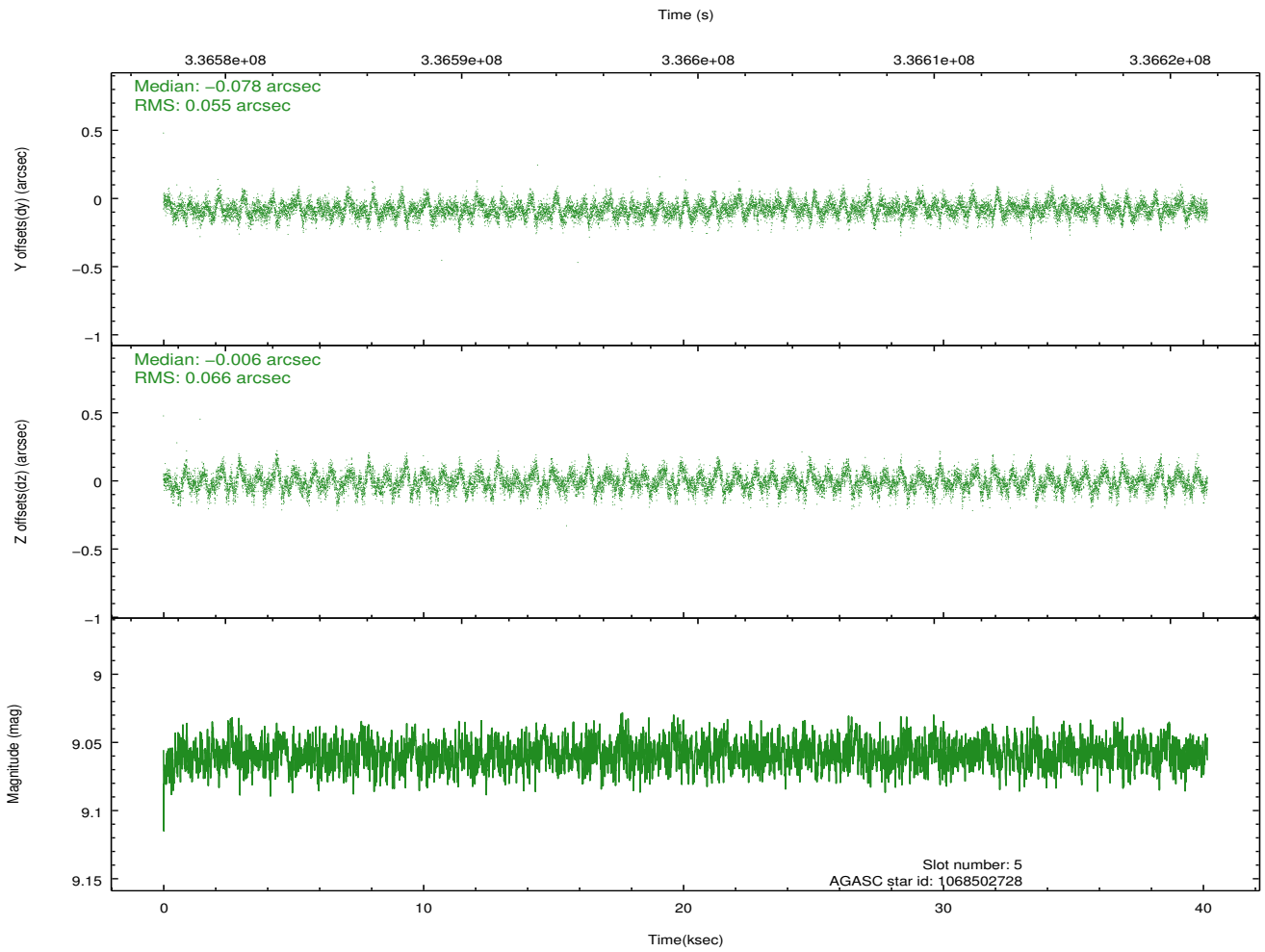
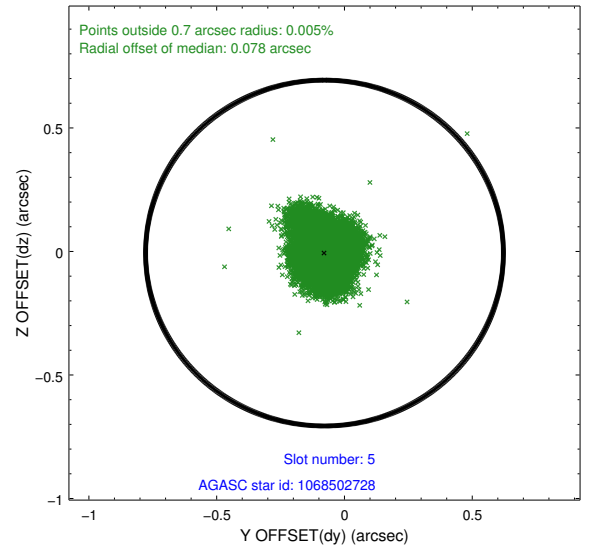
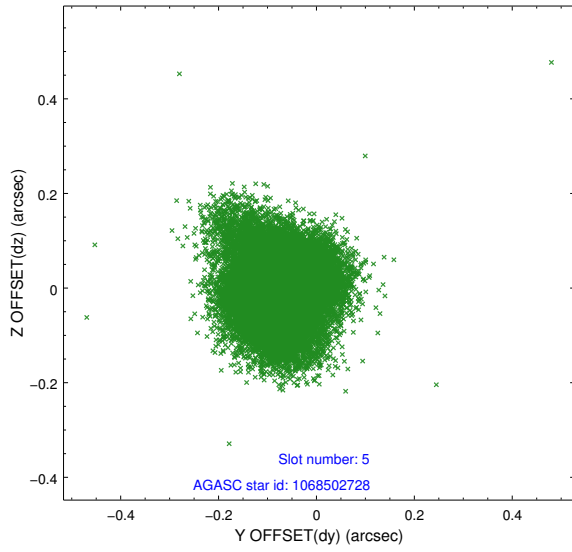
2.4.1 Slot 3



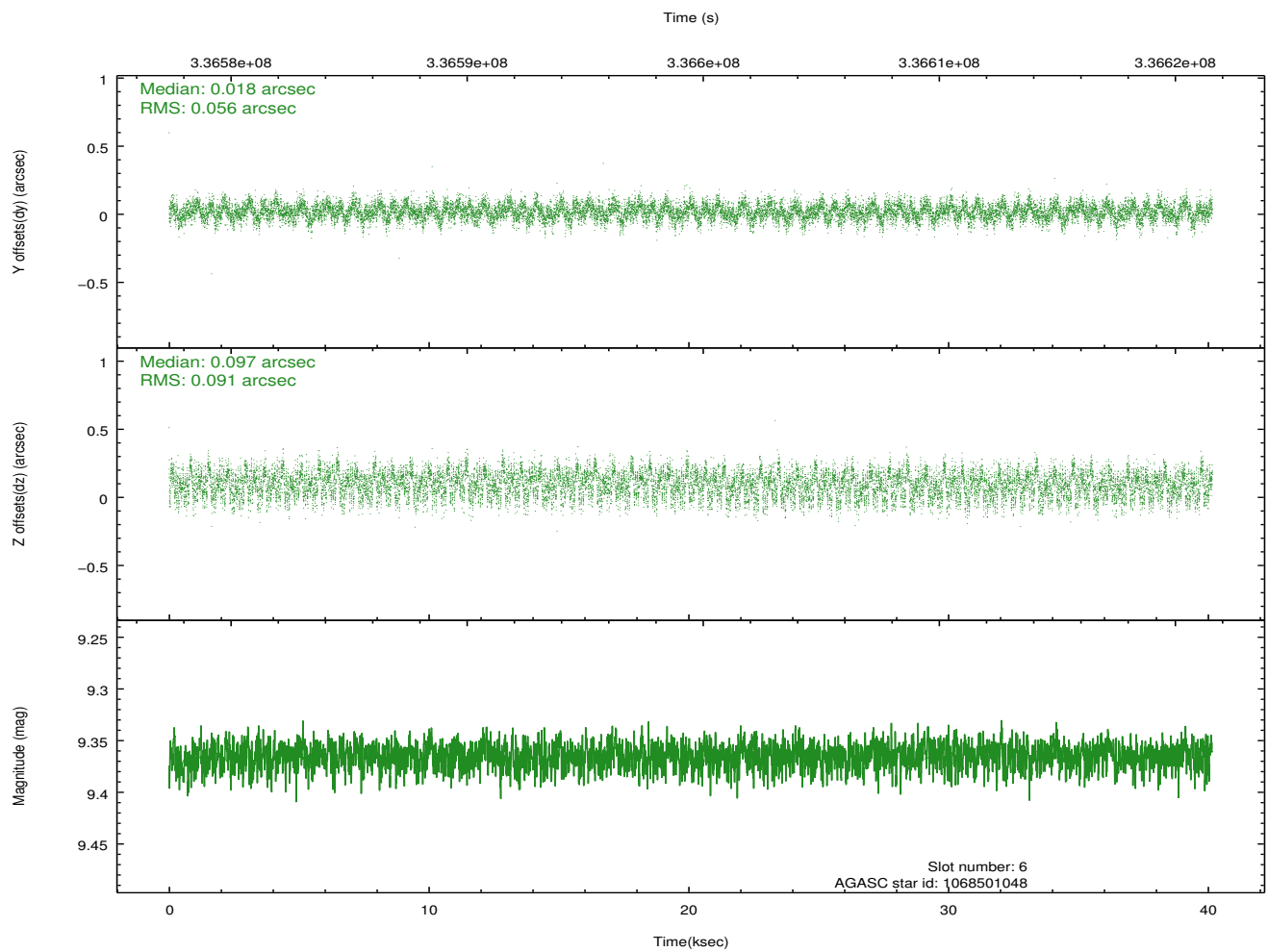
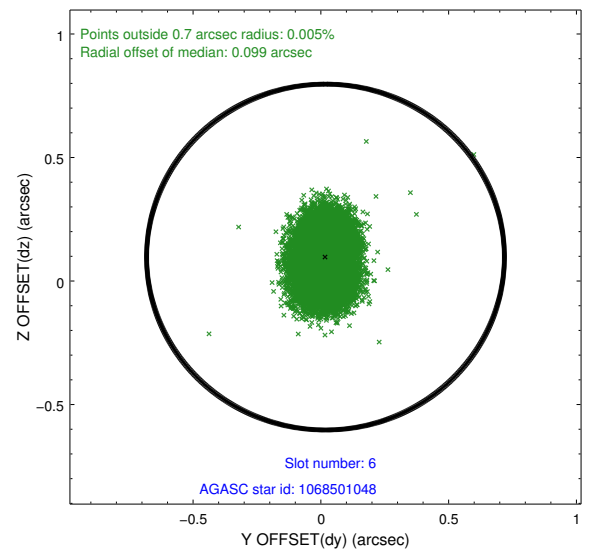
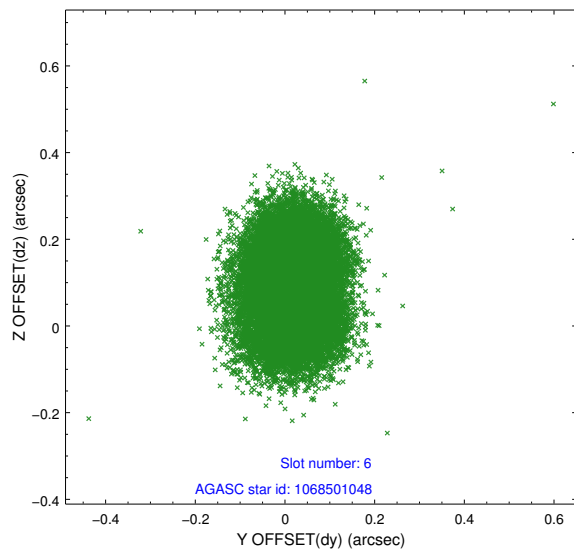
2.4.2 Slot 4



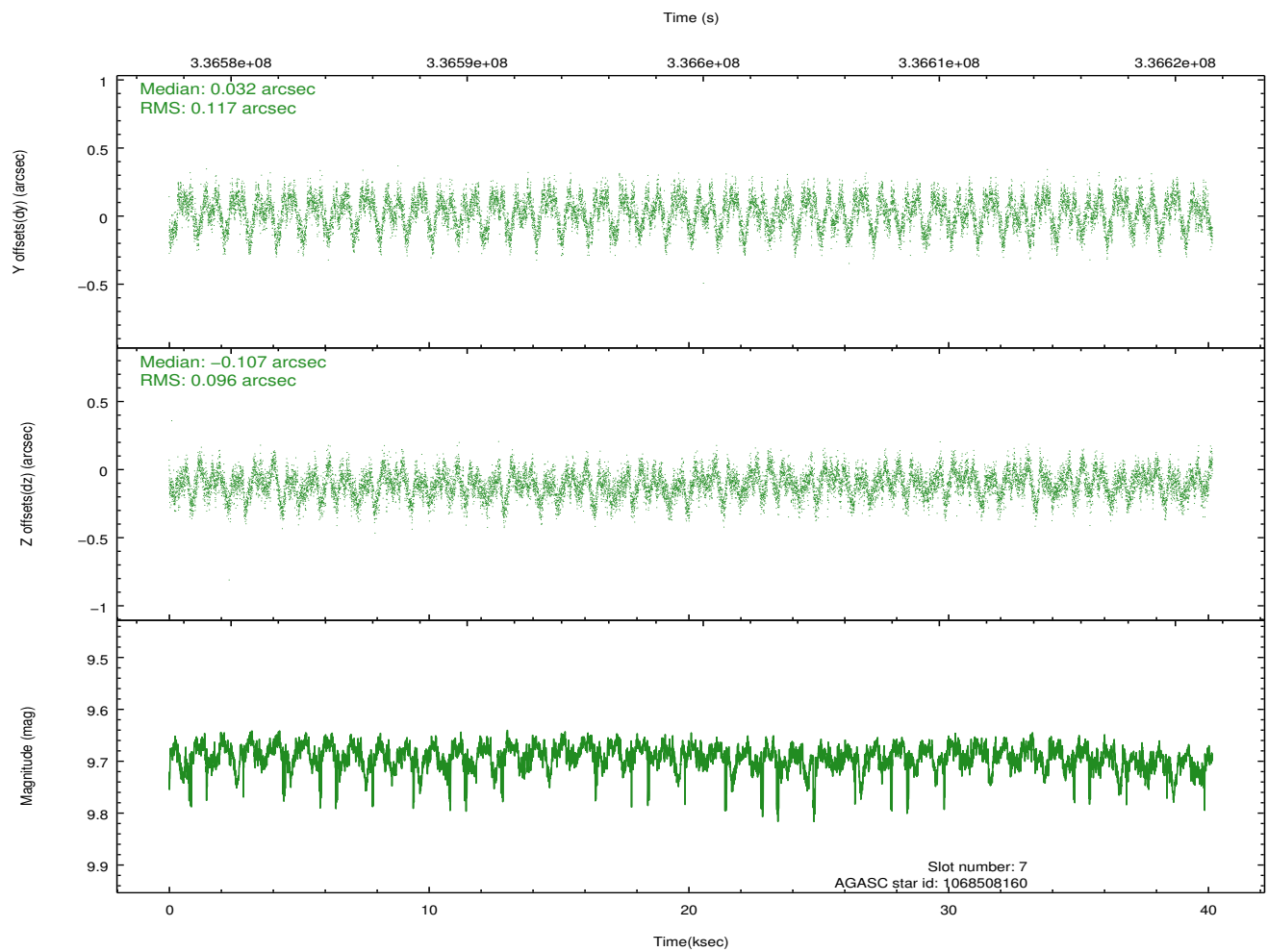
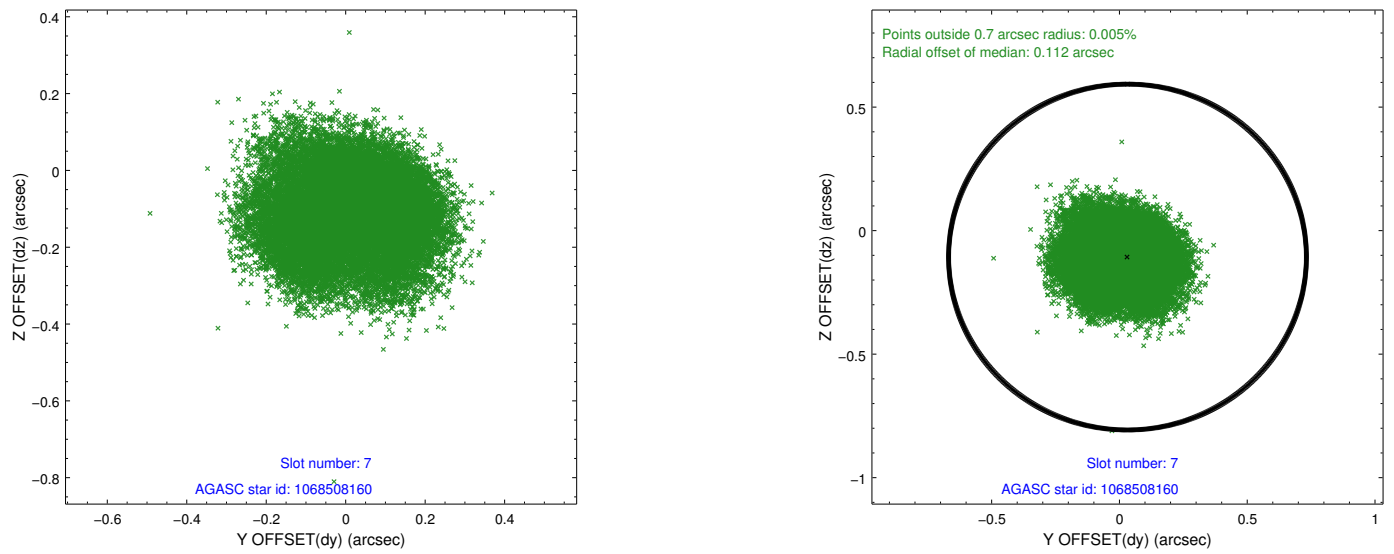
2.4.3 Slot 5



2.4.4 Slot 6

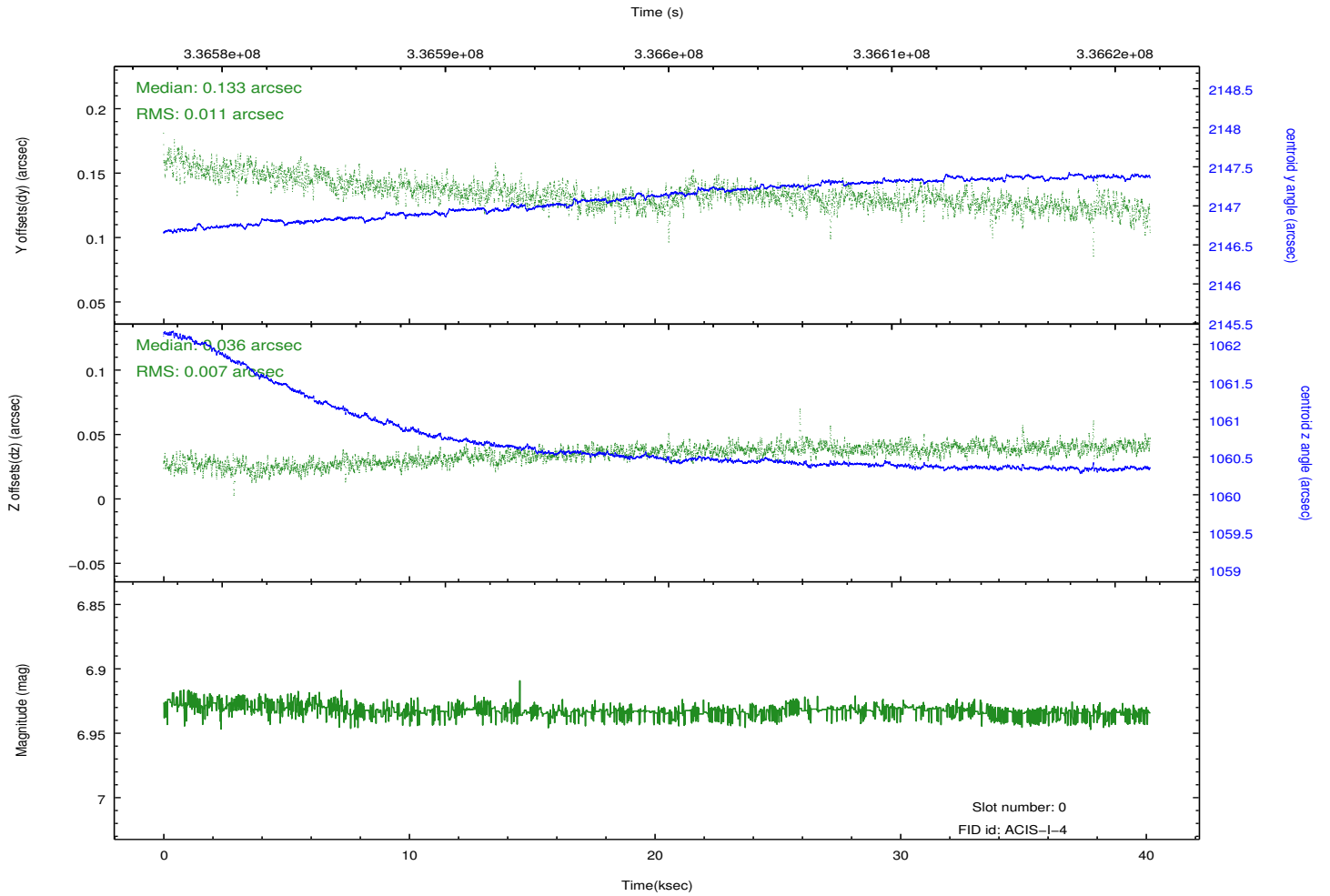
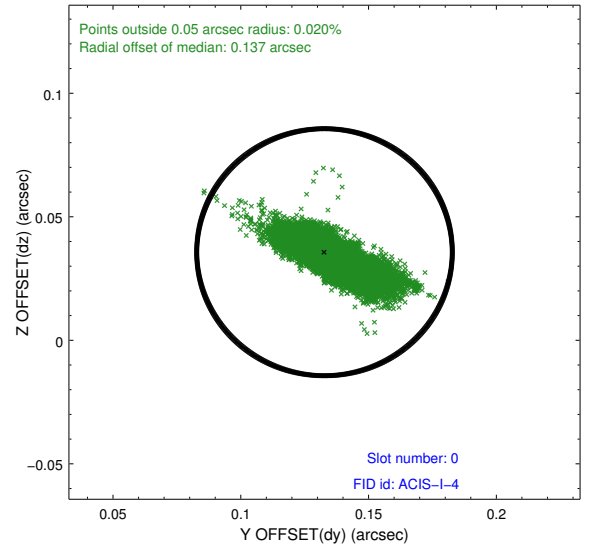
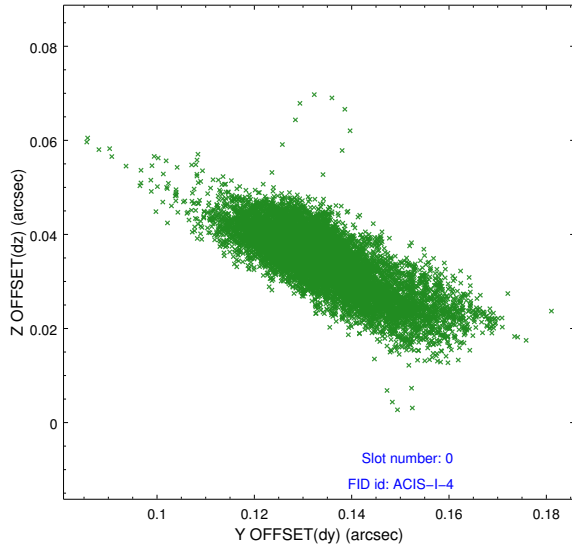


2.4.5 Slot 7

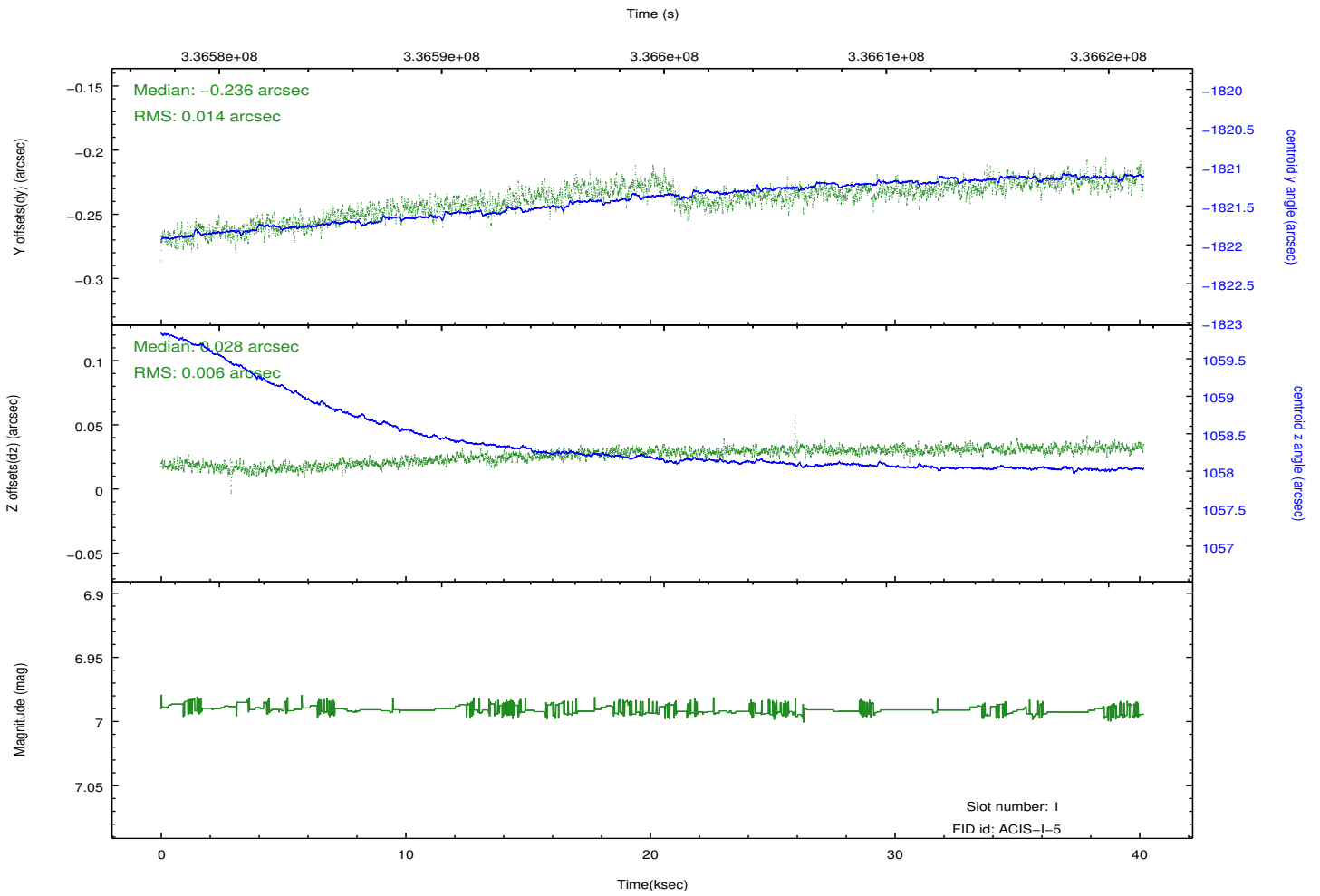
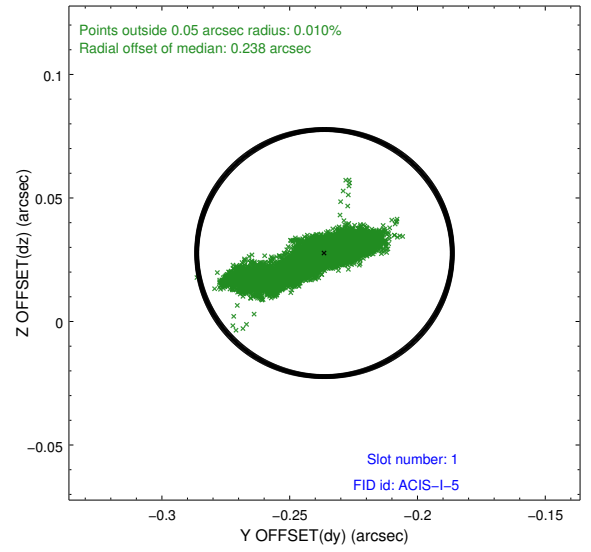
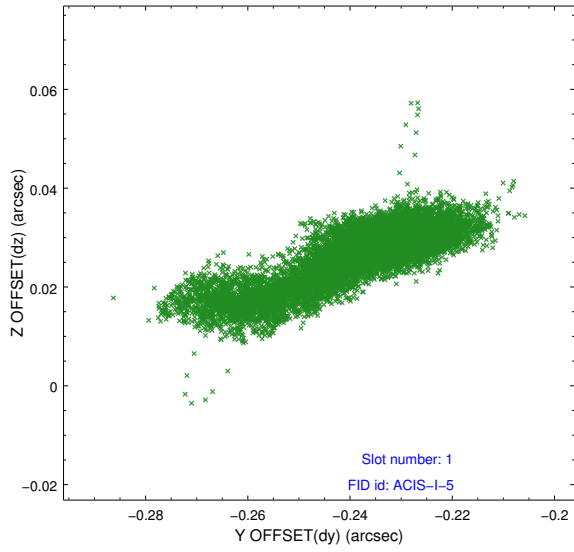


2.5 FID Slots

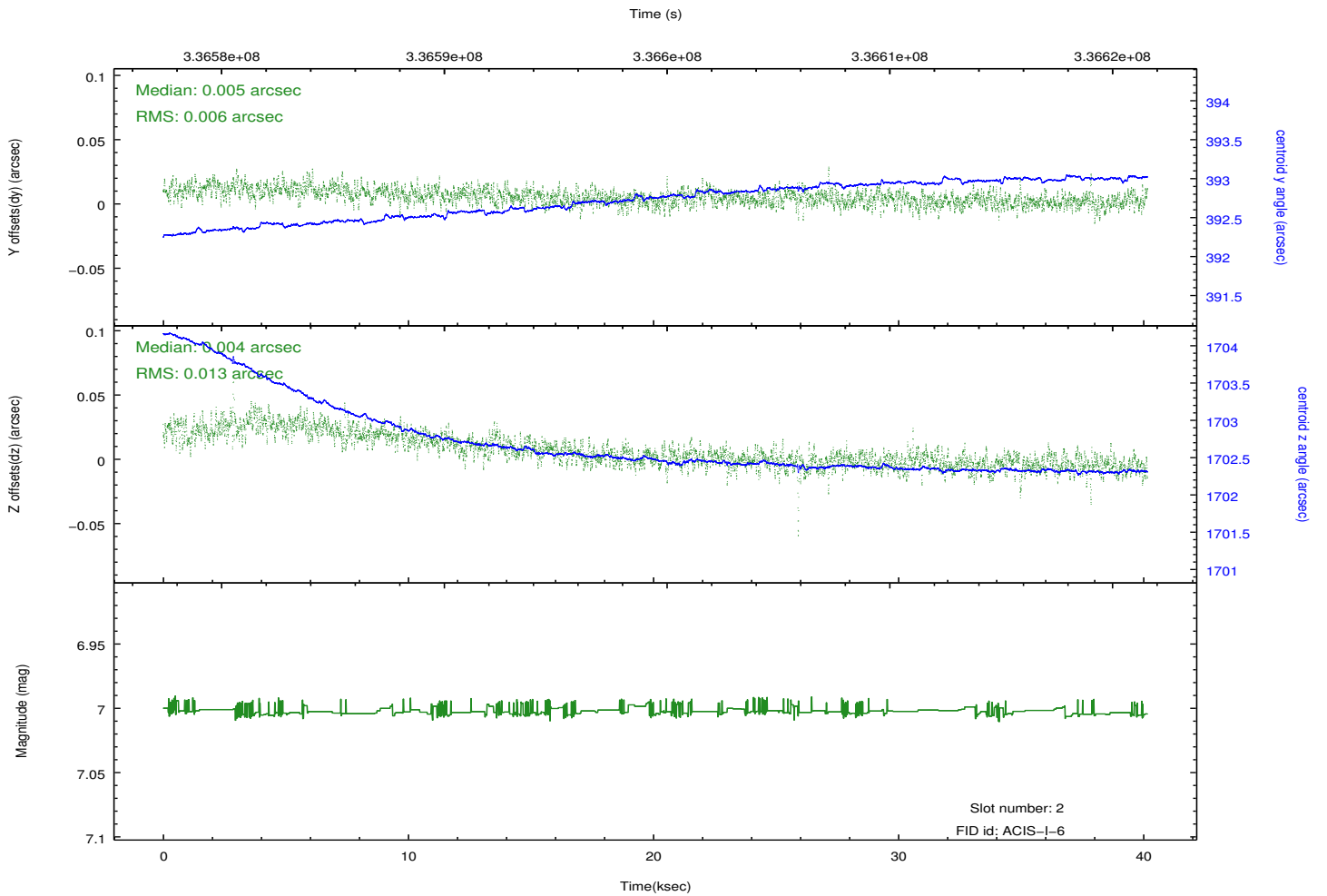
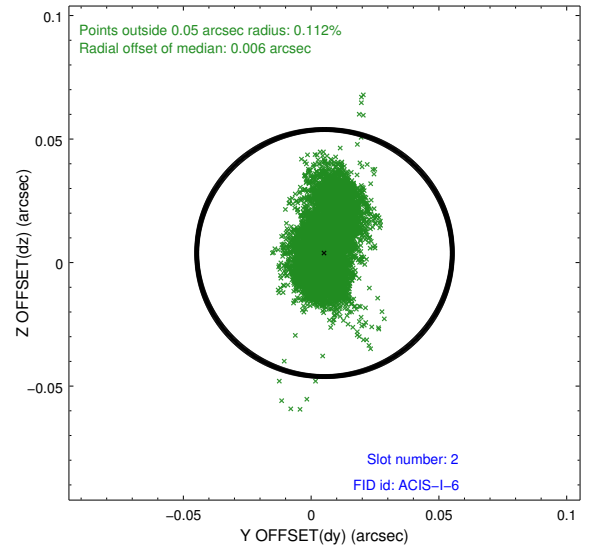
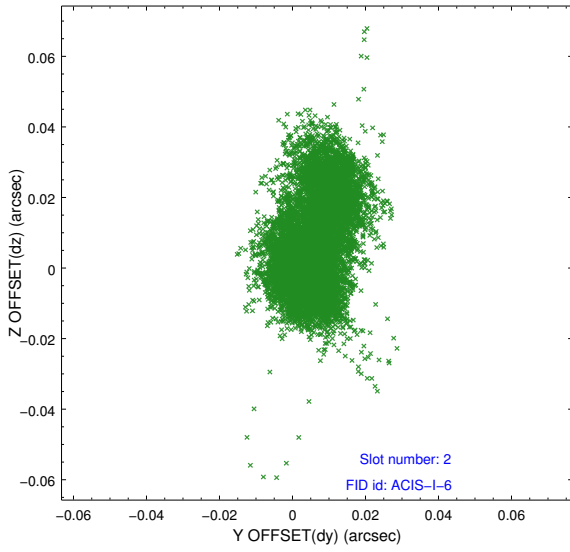
2.5.1 Slot 0



2.5.2 Slot 1



2.5.3 Slot 2



A Summary

A.1 Status

V&V Scientist	Beth Sundheim
V&V Date (YYYY-MM-DD)	2012.05.29
V&V Edition	1
V&V Disposition and Status	OK
V&V Charge Time	40.1567998

A.2 Comments