

V&V Reference Report

L2 ASCDS Version : 8.4.4

Observation 9143 - L2 Version 2
Chandra X-Ray Center

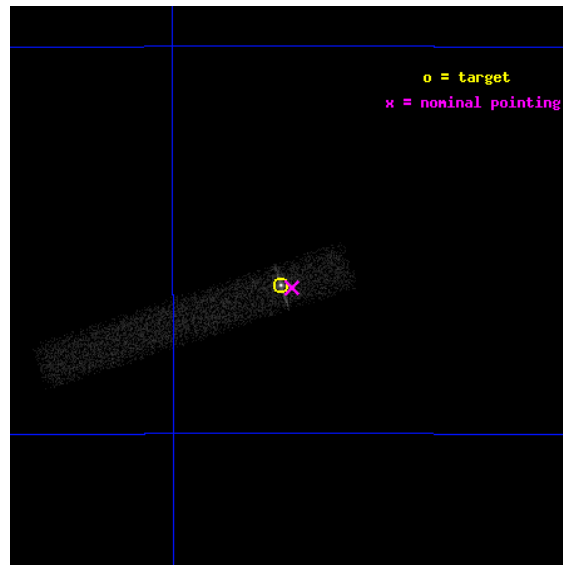
L2 Processing Date : May 17 2012

Contents

1	Front	2
2	OBI	3
2.1	OBI	3
2.1.1	Images	3
2.1.2	Bias	3
2.1.3	Parameters	4
2.1.4	Events	4
2.2	Compared Parameters	5
2.3	Aspect	6
2.4	Star Slots	9
2.4.1	Slot 3	9
2.4.2	Slot 4	10
2.4.3	Slot 5	11
2.4.4	Slot 6	12
2.4.5	Slot 7	13
2.5	FID Slots	14
2.5.1	Slot 0	14
2.5.2	Slot 1	15
2.5.3	Slot 2	16
A	Summary	17
A.1	Status	17
A.2	Comments	17

1 Front

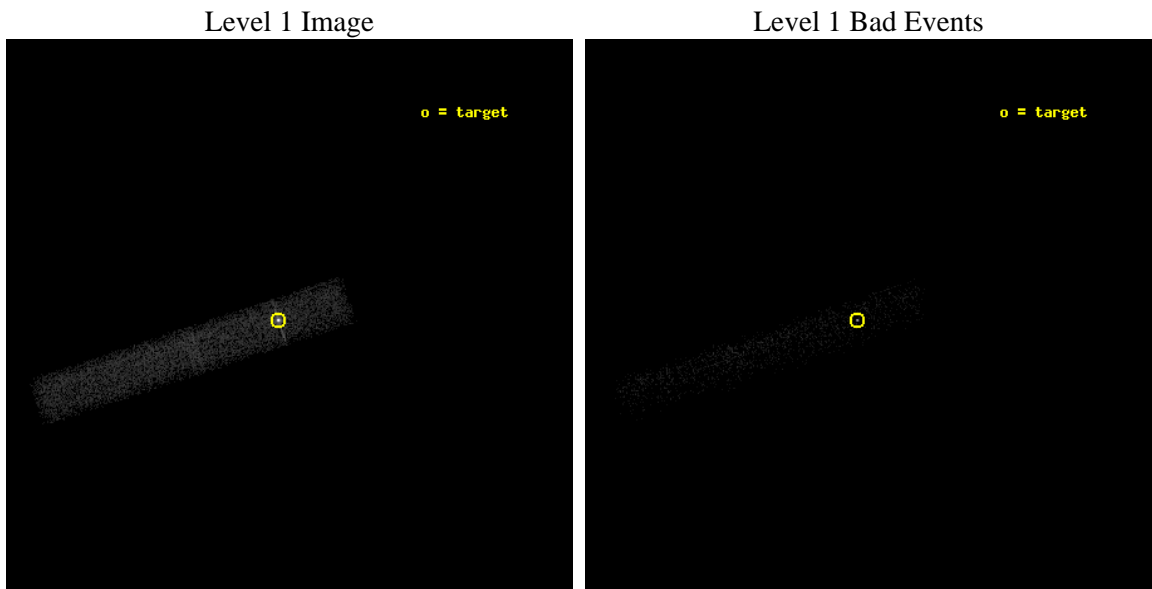
seq_num	501004	Sequence number
obs_id	9143	Observation id
title	AO9 Chandra Monitoring of SNR 1987A	Proposal title
observer	Prof. David Burrows	Principal investigator
object	SNR 1987A	Source name
dtcycle	0	
cycle	P	events from which exps? Prim/Second/Both
ra_targ	83.866667	Observer's specified target RA [deg]
dec_targ	-69.26975	Observer's specified target Dec [deg]
ra_nom	83.853369516598	Nominal RA [deg]
dec_nom	-69.270887670128	Nominal Dec [deg]
roll_nom	161.80290496299	Nominal Roll [deg]
revision	2	Processing version of data
ontime	28757.75	Sum of GTIs [s]
livetime	8583.378104107	Livetime [s]
ontime7	28757.75	Sum of GTIs [s]
l2events	19915	Number of level 2 events



2 OBI

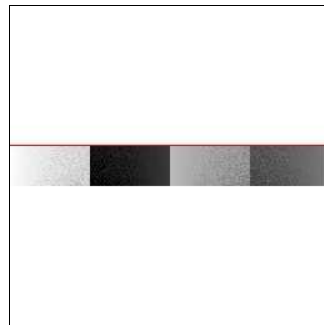
2.1 OBI

2.1.1 Images



2.1.2 Bias

Chip 7



2.1.3 Parameters

obi_num	0	Obi number	sched_exp_time	29000.000000	[s] Scheduled observation exposure time
ascdsver	8.4.4	Processing system revision	ontime	28757.75	Sum of GTIs [s]
caldbver	4.4.9	 	ontime7	28757.75	Sum of GTIs [s]
date	2012-05-17T16:07:03	Date and time of file creation	l1events	27377	Number of level 1 events
revision	2	Processing version of data			

2.1.4 Events

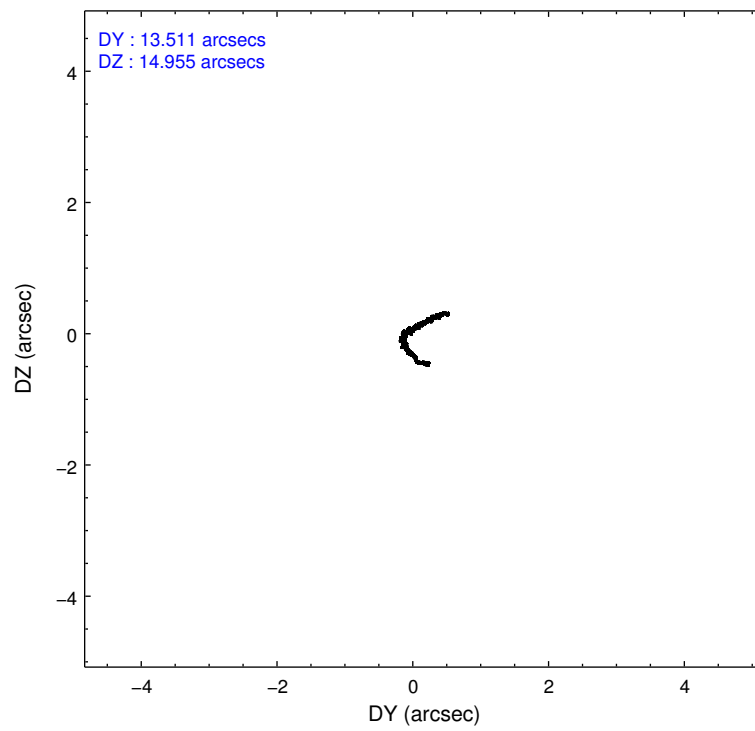
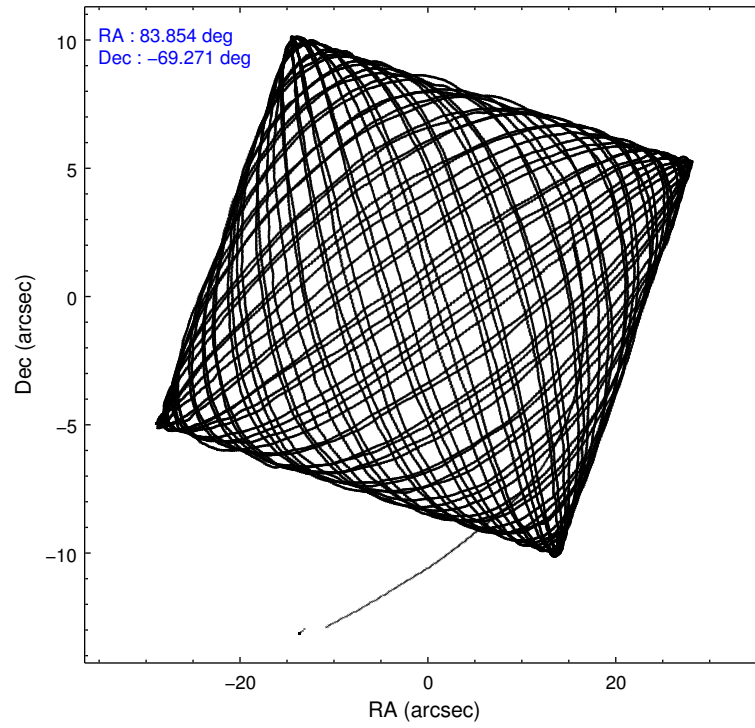
	ccd 7
level 1 events	27377
rejected events	6983
rejected %	25%

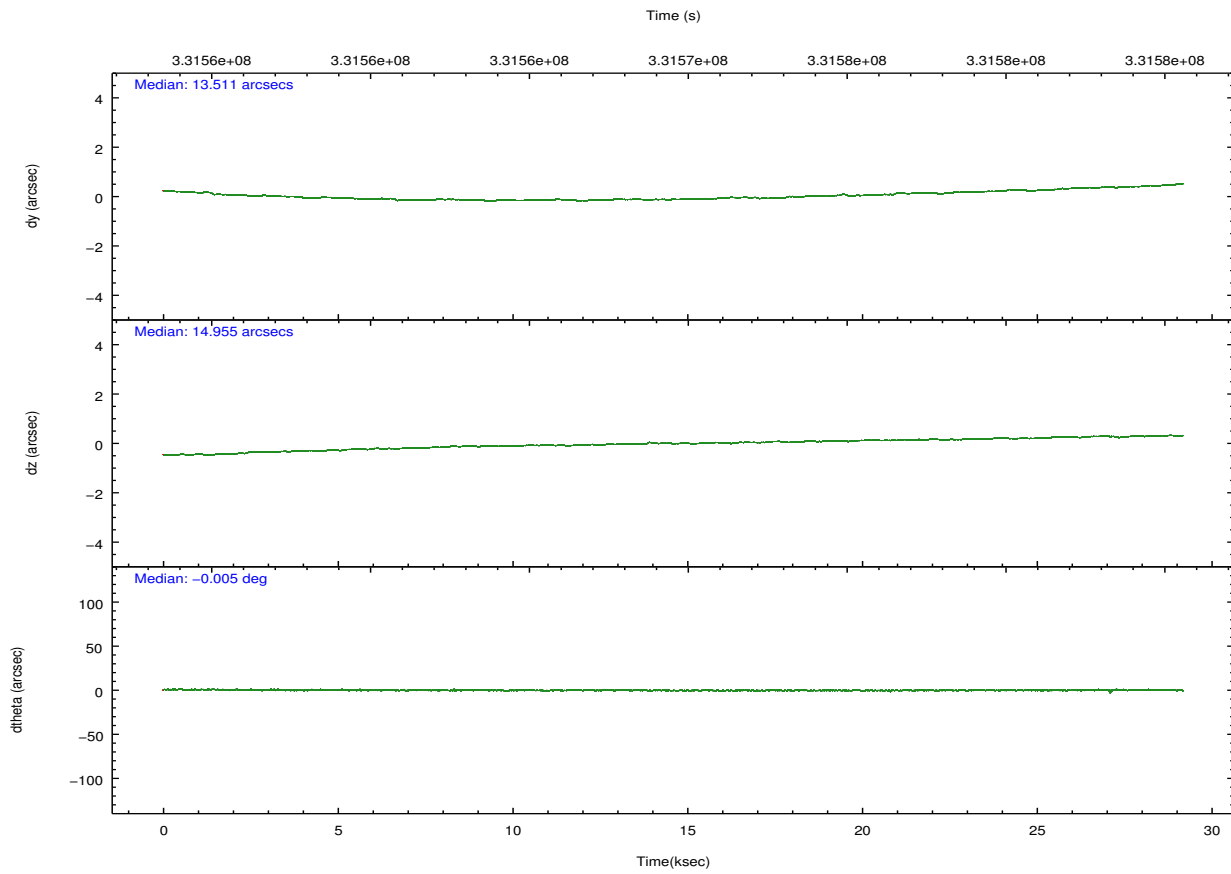
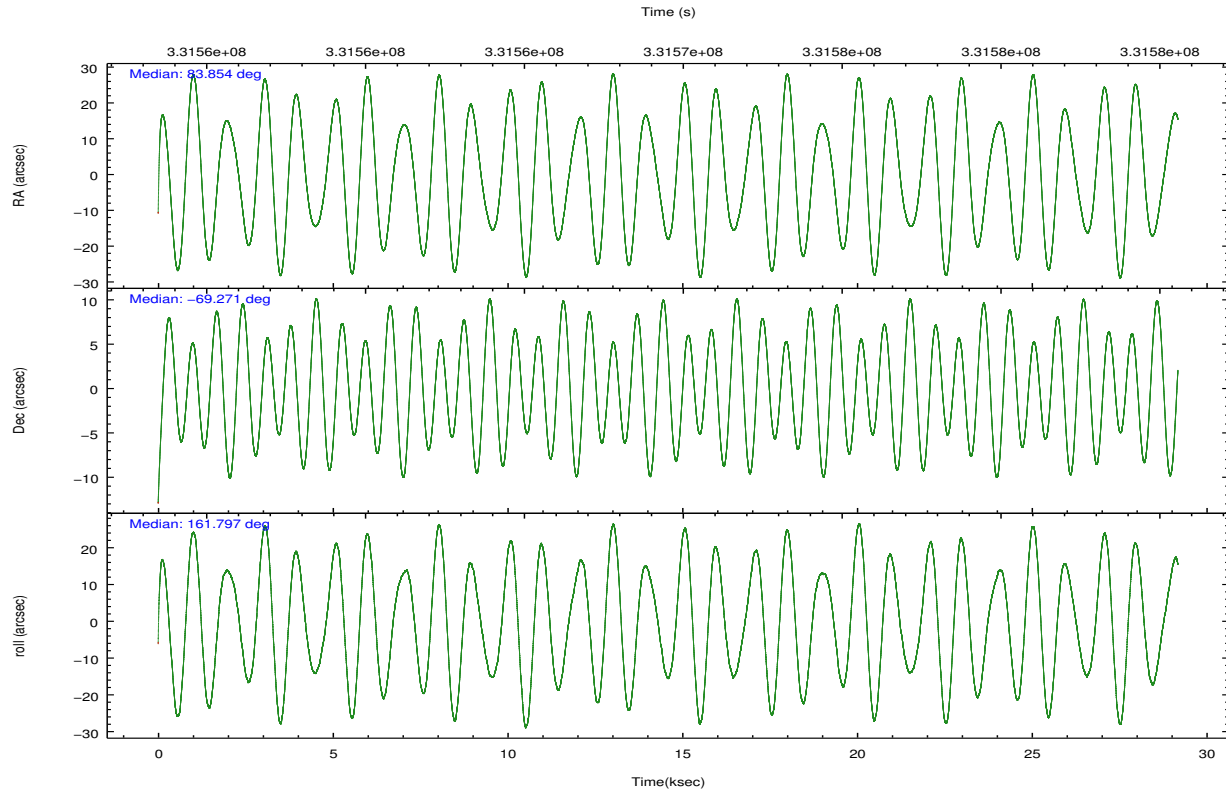
	ccd 7
grade 0 events	5038
	18%
grade 1 events	103
	0%
grade 2 events	4906
	17%
grade 3 events	2837
	10%
grade 4 events	2770
	10%
grade 5 events	1472
	5%
grade 6 events	4843
	17%
grade 7 events	5408
	19%

2.2 Compared Parameters

Parameter	Planned	Actual	Parameter	Planned	Actual
Instrument	ACIS	ACIS	Obspar format version number	7	7
Detector	ACIS-7	ACIS-7	Obspar file type	PREDICTED	ACTUAL
Grating	NONE	NONE	Obspar update status	NONE	UPDATED
Data mode	VFAINT	VFAINT	Number of optional ACIS chips dropped	0	0
Observation mode	POINTING	POINTING	On-chip summing requested	N	N
[deg] Pointing RA	83.928720	83.85336951659798	Subarray requested	CUSTOM	1/8
[deg] Pointing Dec	-69.264913	-69.27088767012781	Subarray start row	449	449
[deg] Pointing Roll	161.716747	161.8029049629869	Subarray row count	128	128
[s] Window start time (MET)	331257665.184000	331257665.184000	Alternating exposures requested	N	N
[s] Window stop time (MET)	333849665.184000	333849665.184000	[s] Primary exposure time	0.000000	0.2
[mm] SIM focus pos	-0.684267	-0.6828225247311905			
[mm] SIM defocus	0	0.001444936568705701			
[mm] SIM translation stage pos	-190.132523	-190.1400660498719			
[mm] SIM translation stage offset	0	0.00754346686406393			
[s] Observation start time (MET)	331555111.184000	331554076.20759			
Observation start date	2008-07-04T10:37:26	2008-07-04T10:21:16			
[s] Observation end time (MET)	331584111.184000	331584704.23409			
Observation end date	2008-07-04T18:40:46	2008-07-04T18:51:44			
Read mode	TIMED	TIMED			

2.3 Aspect



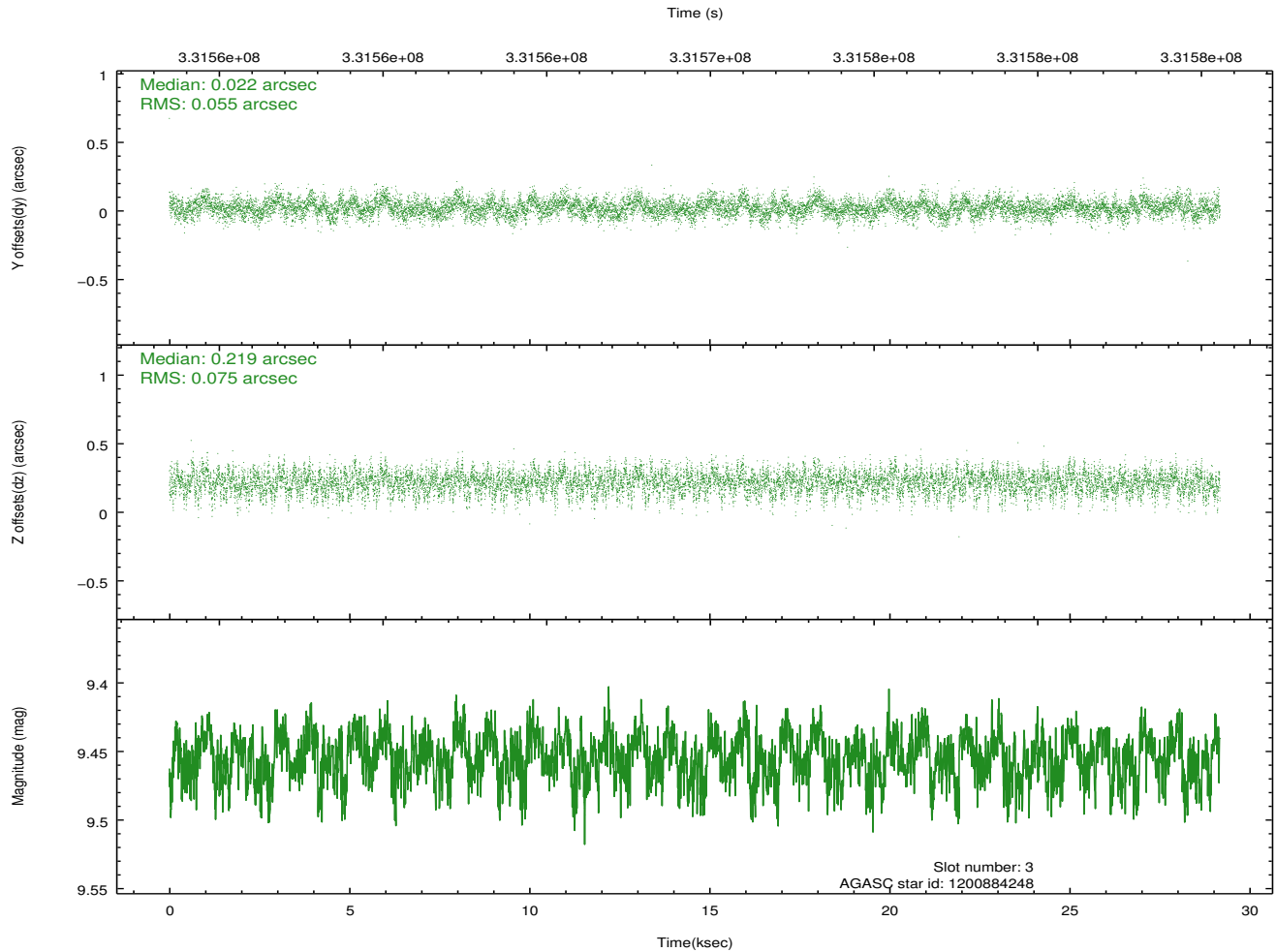
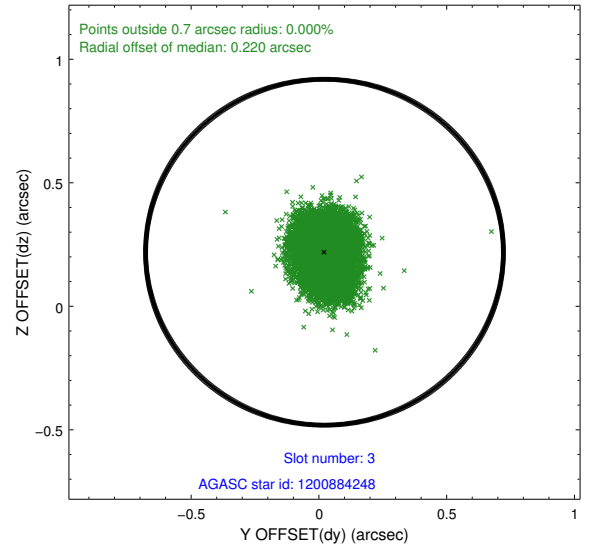
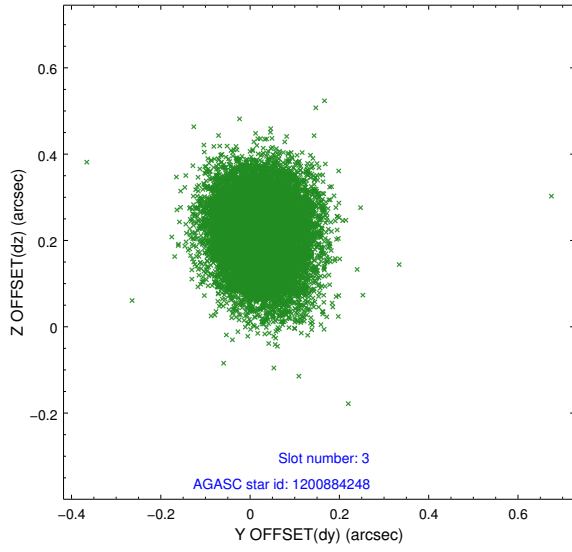


Slot Statistics

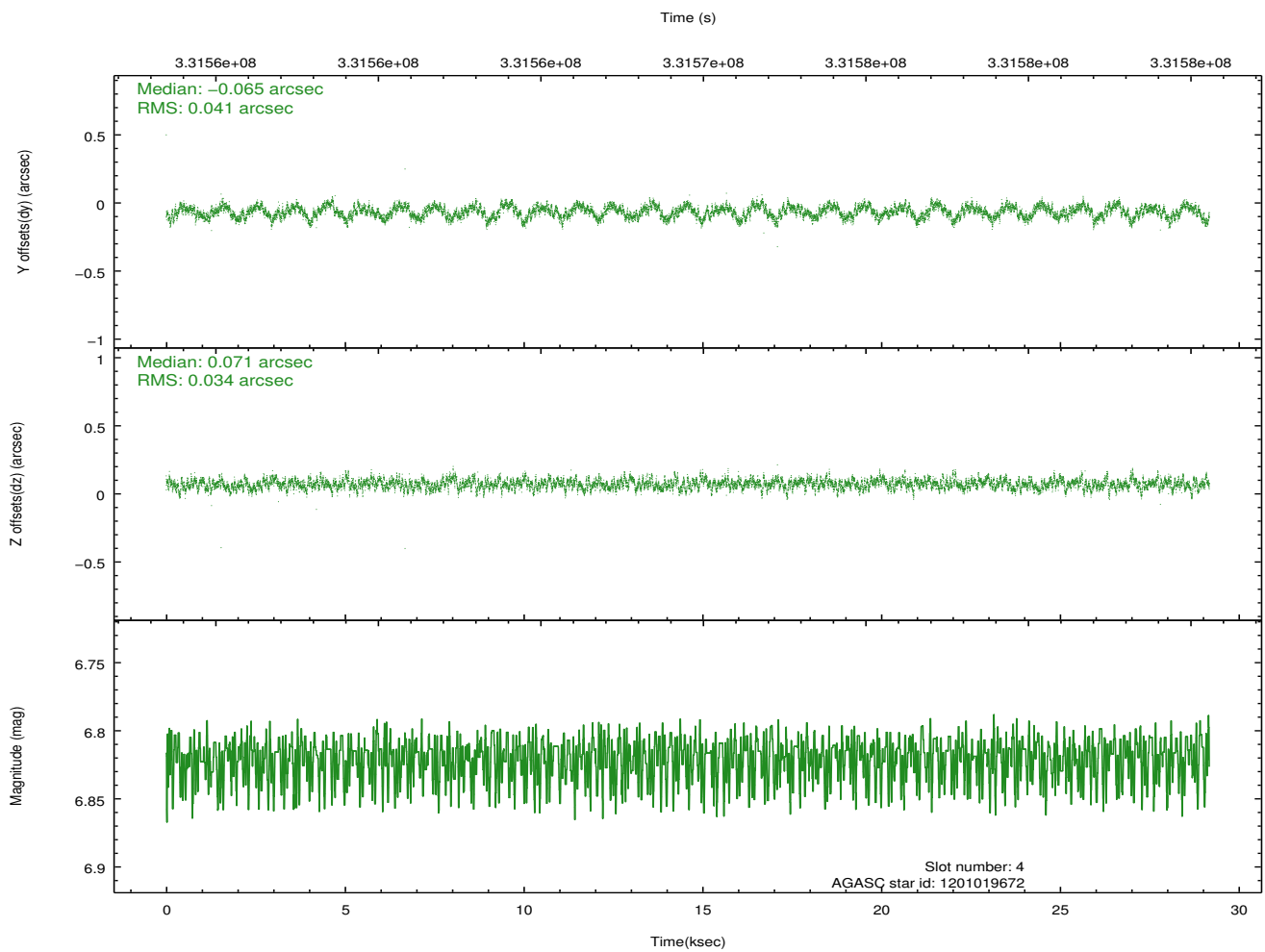
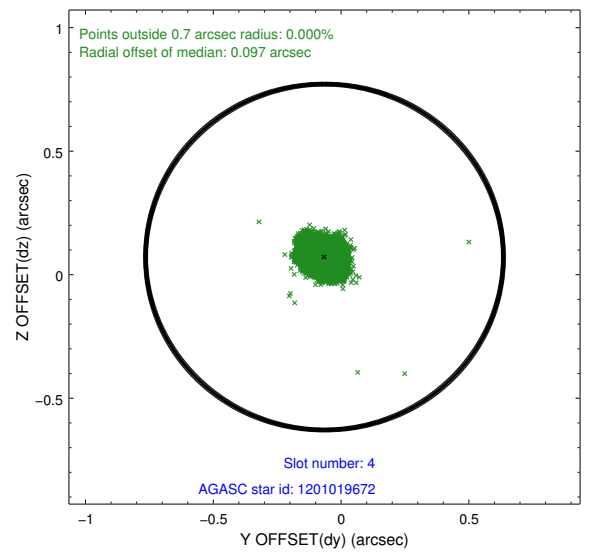
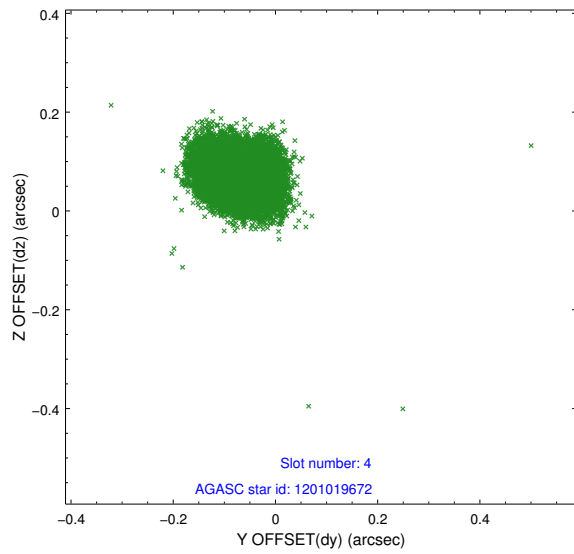
slot	status	id	mag	n_pts	med_dy	med_dz	dr1	dr2	ra	dec	mean_y	mean_z
0	FID	ACIS-S-2	6.88	7117	-0.056	-0.007	0.009	0.015	0.000000	0.000000	-766.52	-1736.32
1	FID	ACIS-S-4	6.96	7117	0.153	0.029	0.010	0.017	0.000000	0.000000	2146.91	172.15
2	FID	ACIS-S-5	6.99	7114	-0.128	-0.013	0.008	0.015	0.000000	0.000000	-1819.35	165.82
3	GUIDE	1200884248	9.45	14224	0.022	0.219	0.099	0.161	83.880915	-68.565170	850.39	-2371.86
4	GUIDE	1201019672	6.82	14234	-0.065	0.071	0.057	0.090	85.312192	-68.770187	-1159.51	-2237.54
5	GUIDE	1201020040	8.58	14220	0.088	0.192	0.086	0.133	85.379163	-68.879396	-1357.52	-1886.78
6	GUIDE	1201542672	8.19	14234	-0.018	-0.200	0.062	0.106	84.492488	-69.957531	-1443.82	2150.66
7	GUIDE	1201410616	9.33	14212	-0.027	-0.285	0.109	0.173	82.516808	-69.784406	1074.49	2346.22

2.4 Star Slots

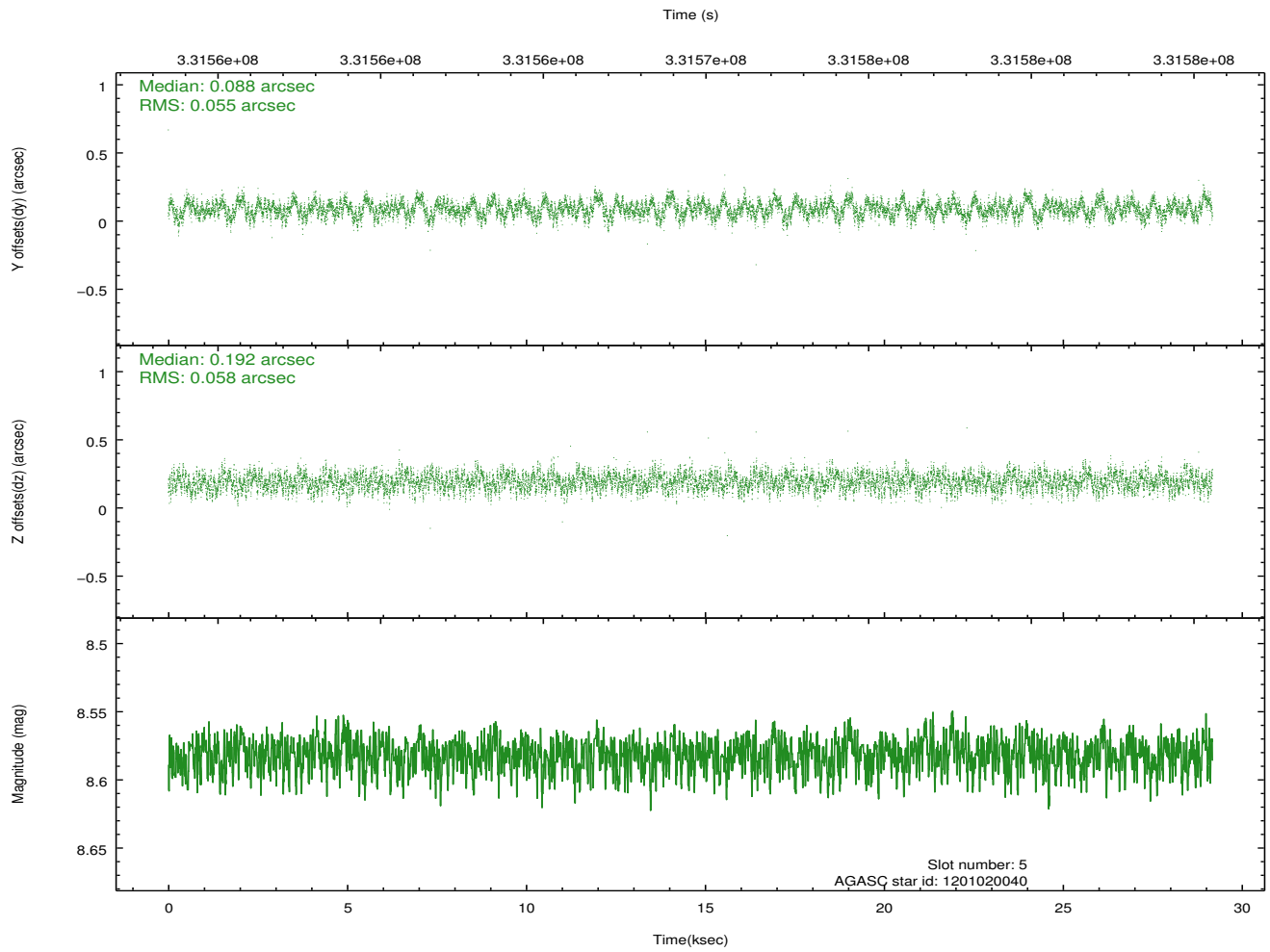
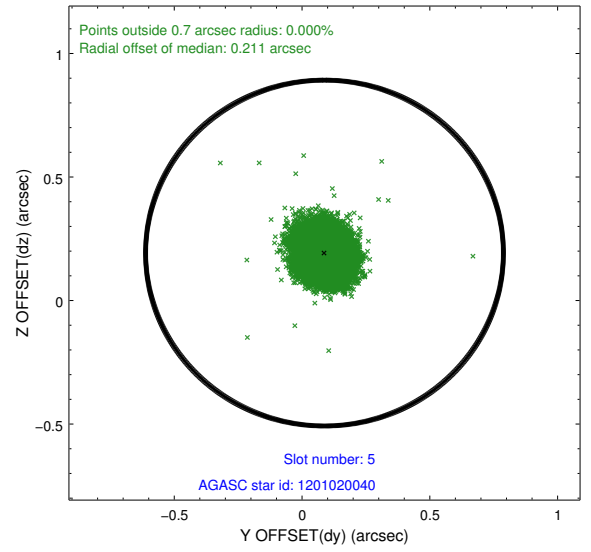
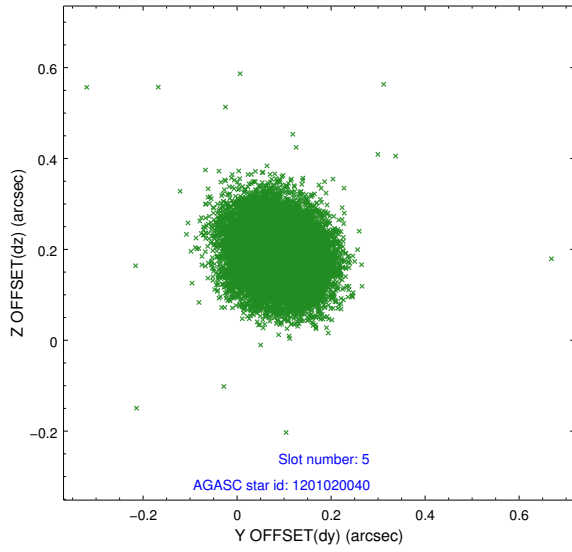
2.4.1 Slot 3



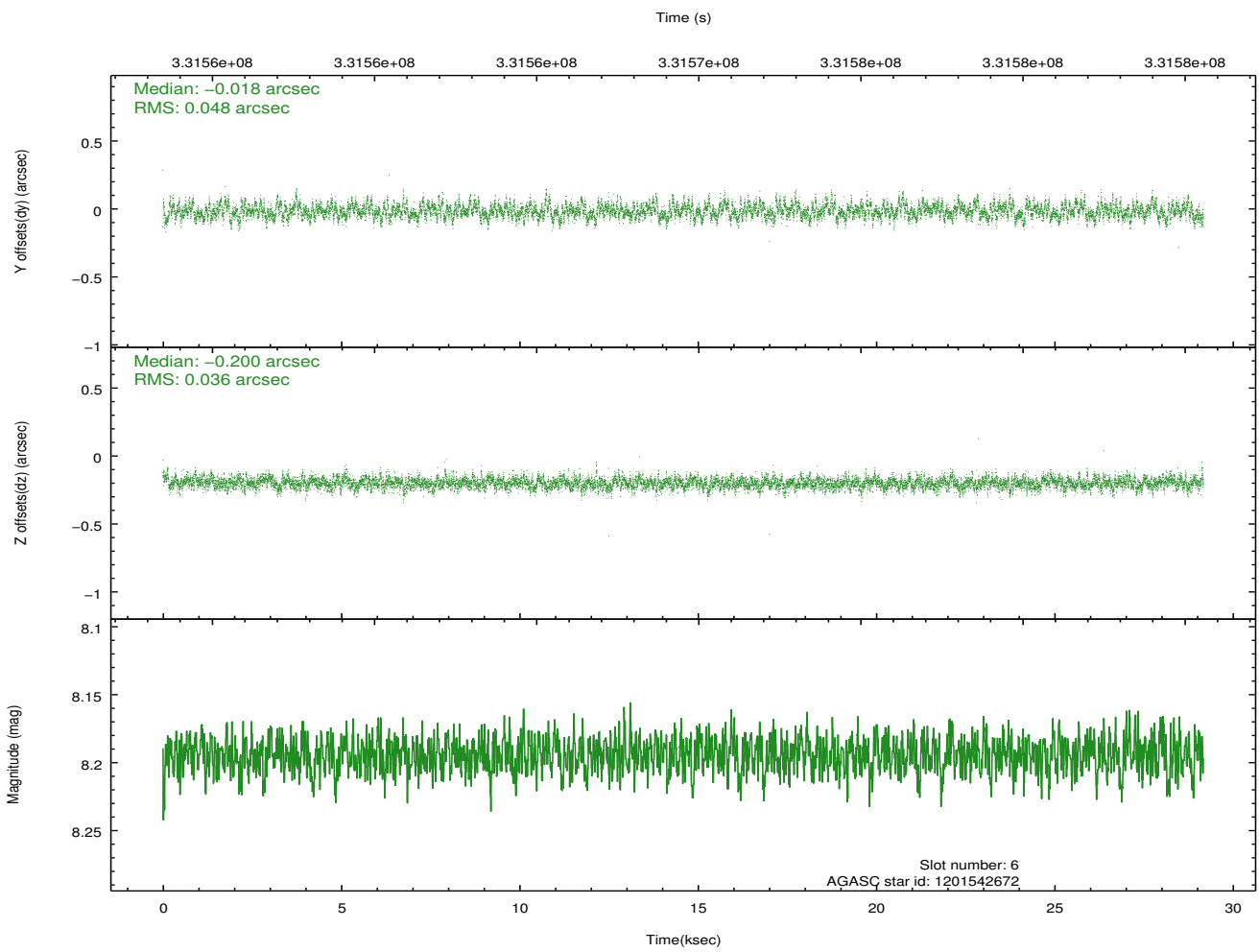
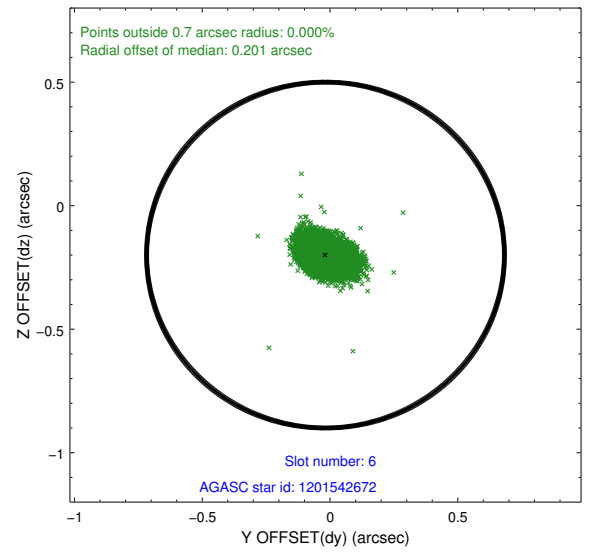
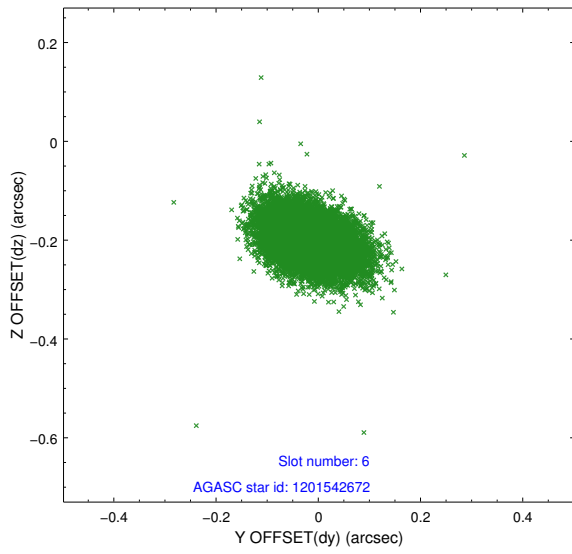
2.4.2 Slot 4



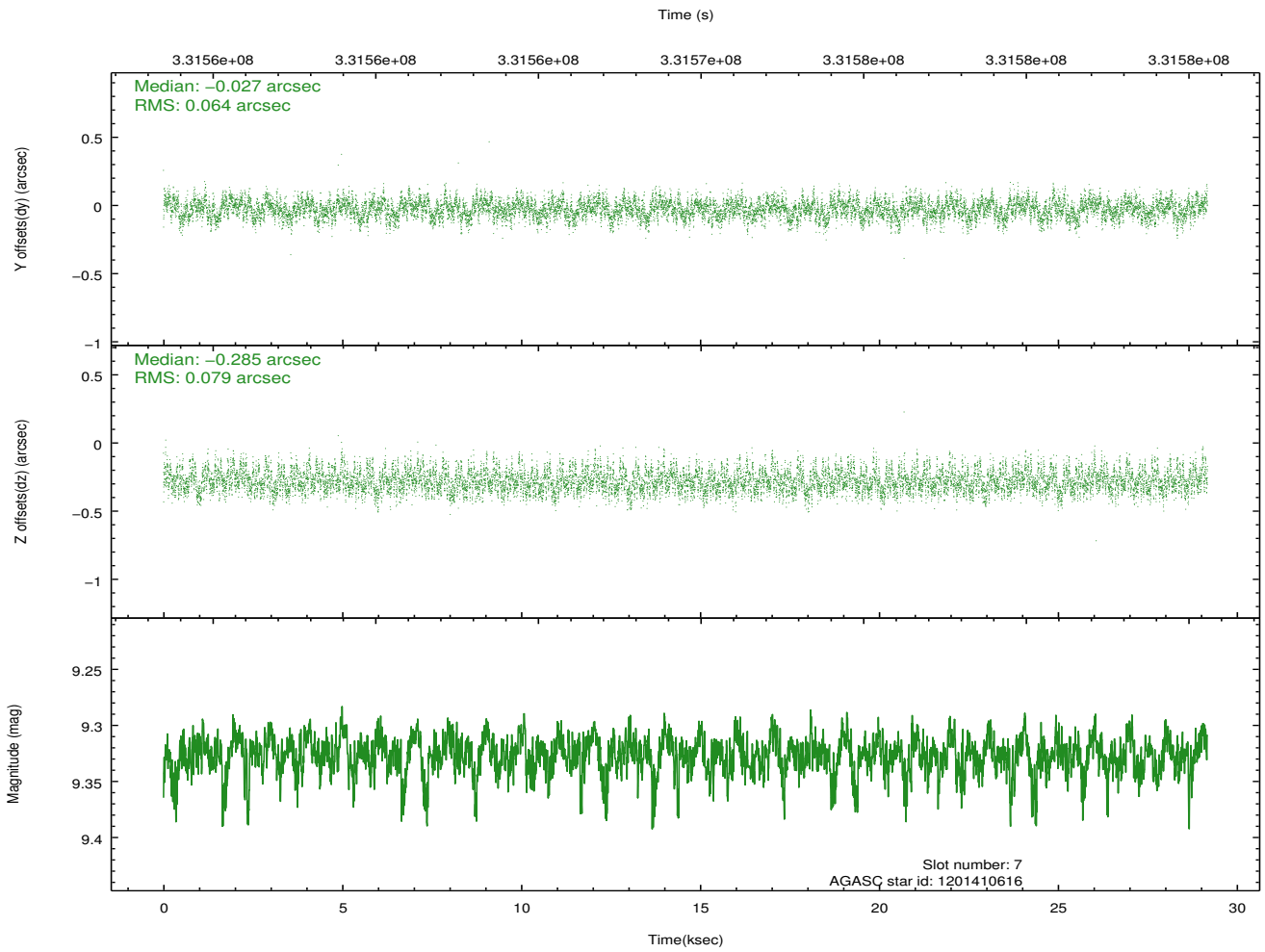
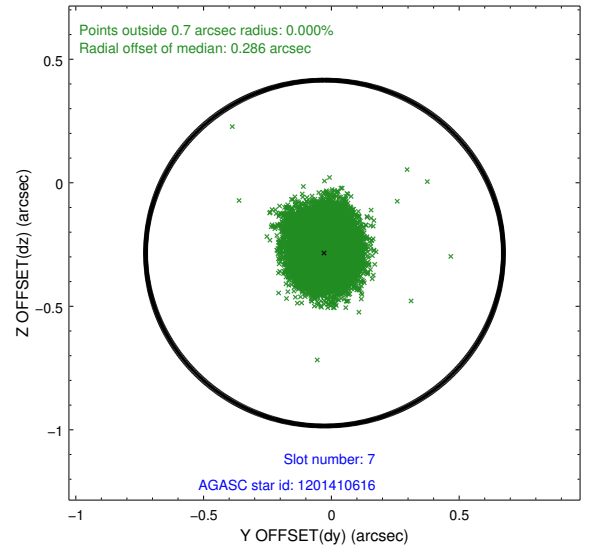
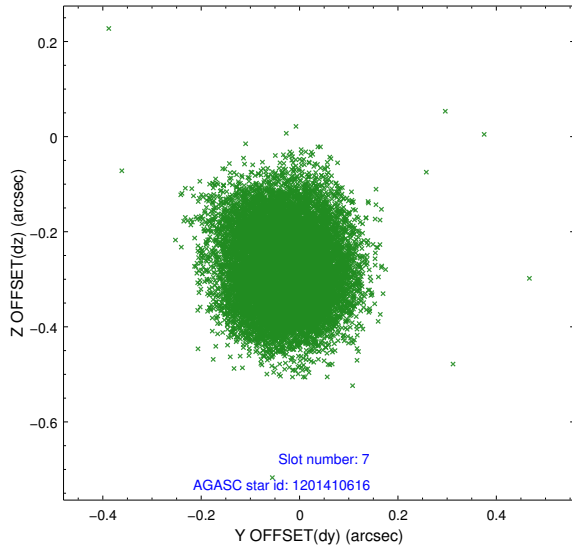
2.4.3 Slot 5



2.4.4 Slot 6

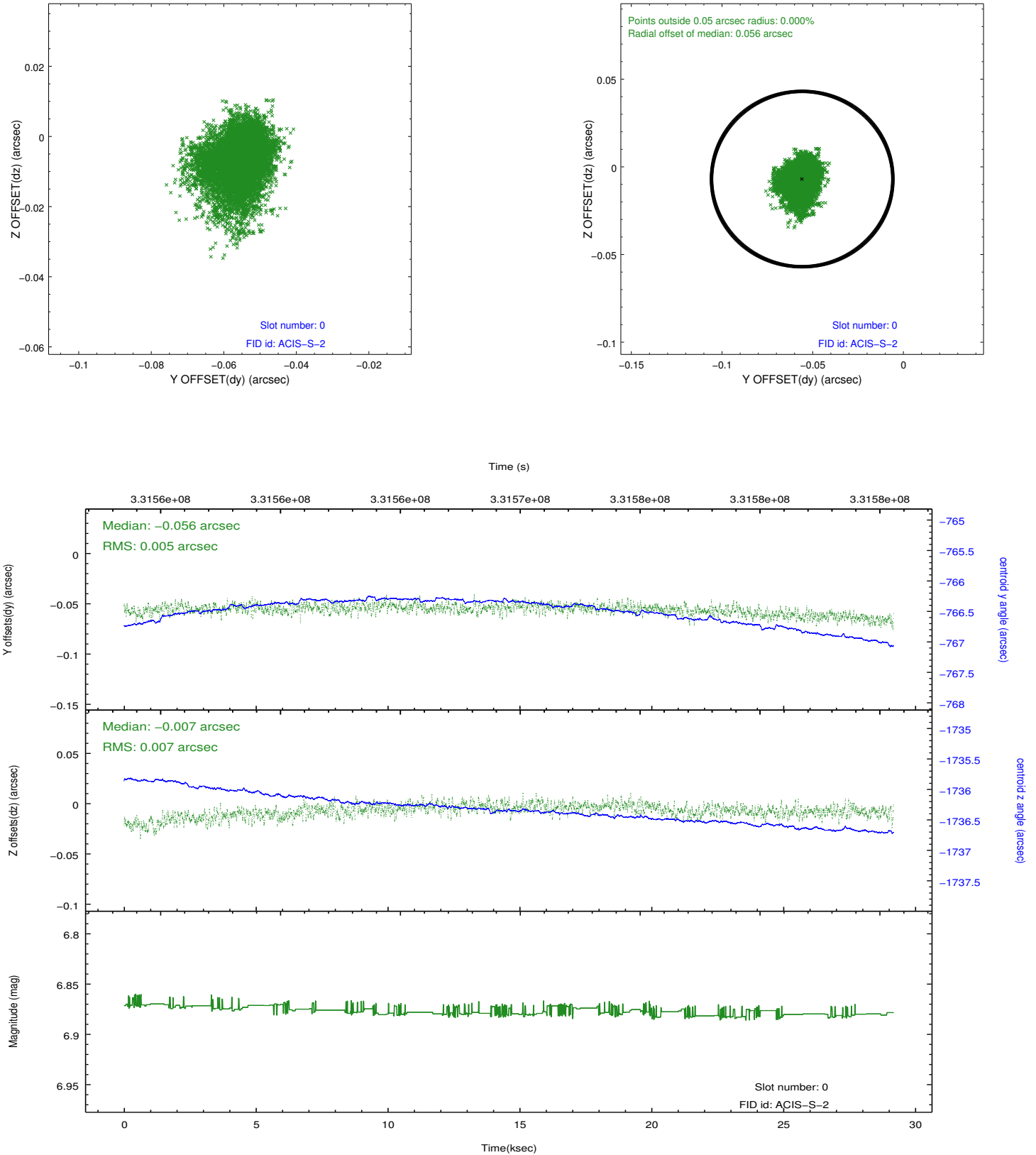


2.4.5 Slot 7

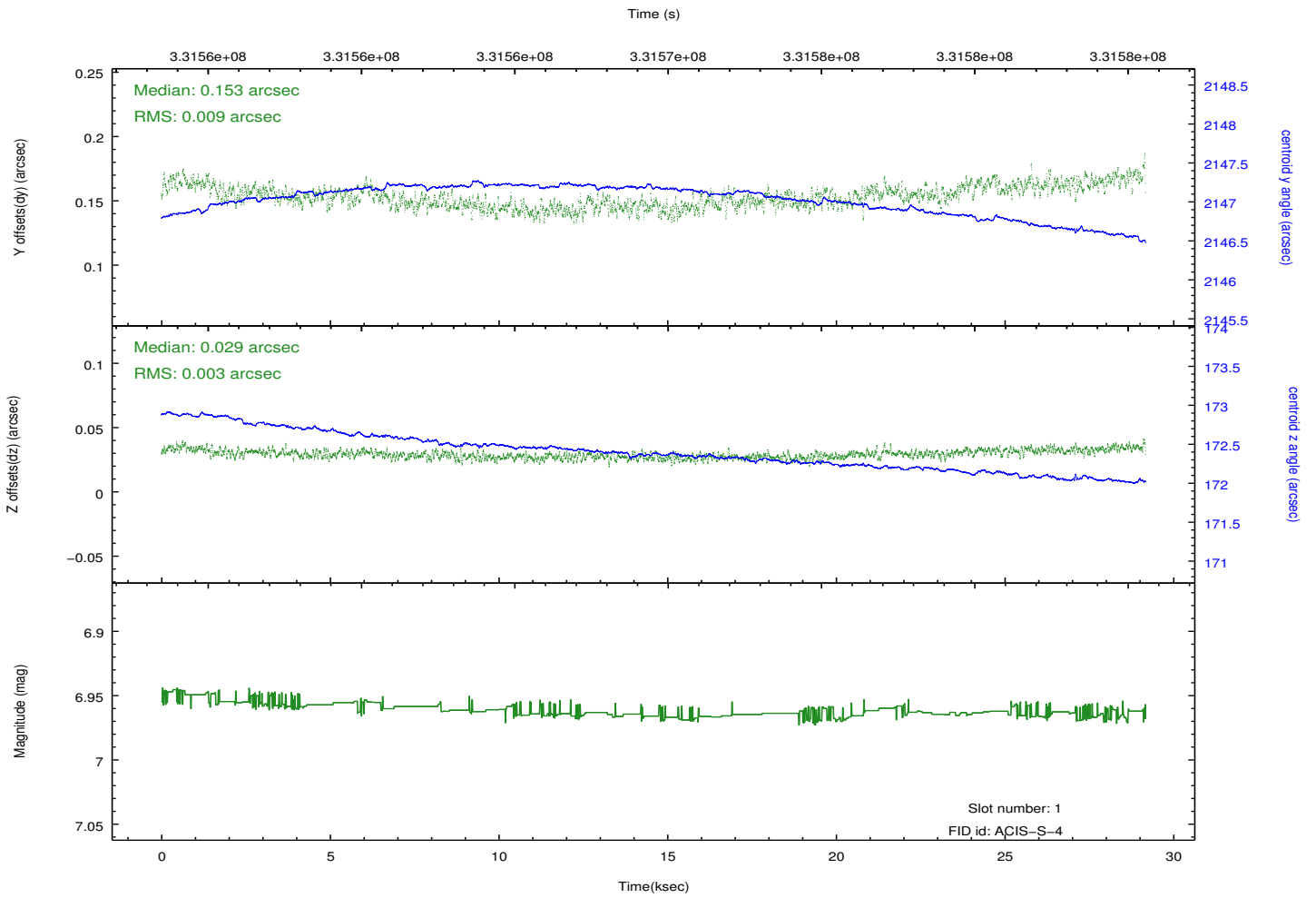
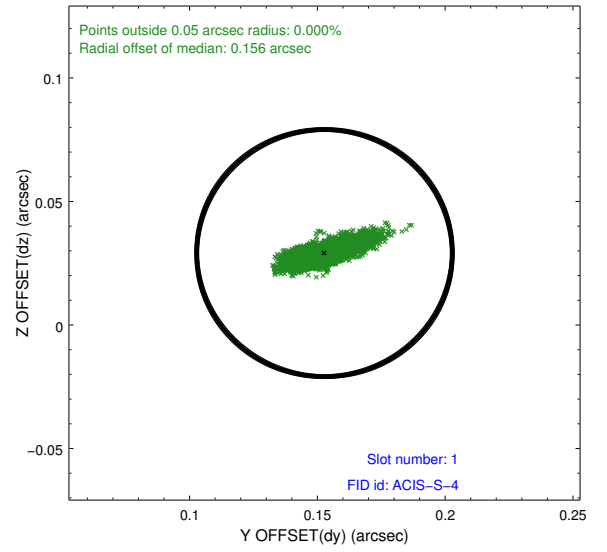
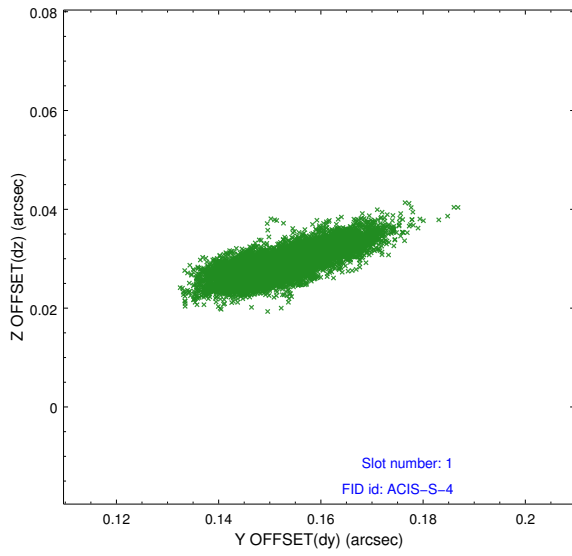


2.5 FID Slots

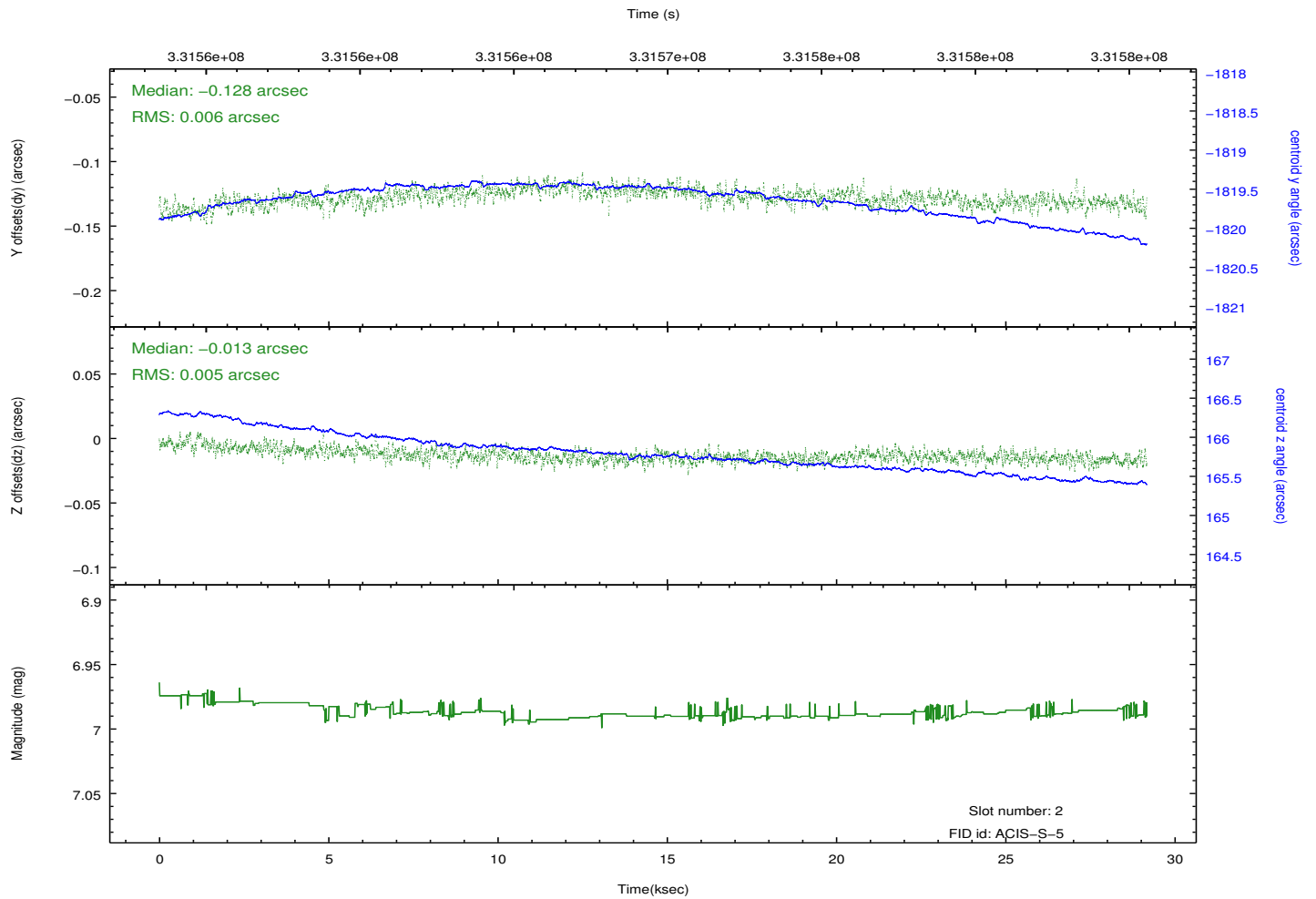
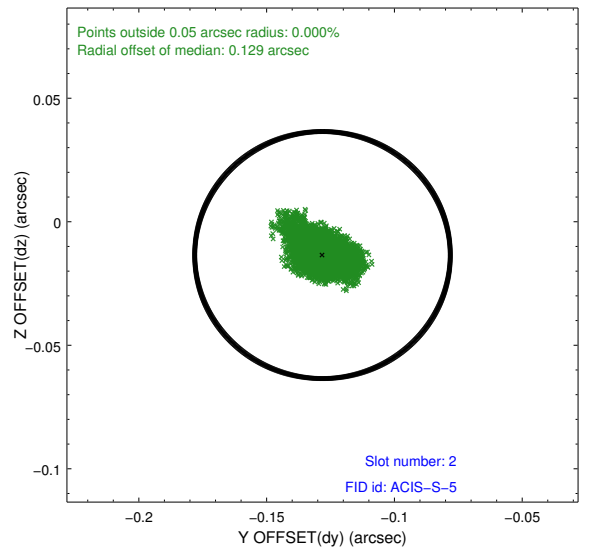
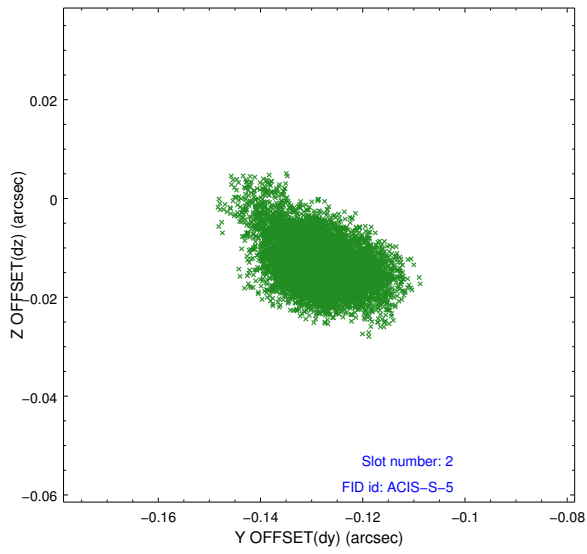
2.5.1 Slot 0



2.5.2 Slot 1



2.5.3 Slot 2



A Summary

A.1 Status

V&V Scientist	Beth Sundheim
V&V Date (YYYY-MM-DD)	2012.05.23
V&V Edition	1
V&V Disposition and Status	OK
V&V Charge Time	28.75775

A.2 Comments

Window preference met.