

V&V Reference Report

L2 ASCDS Version : 8.4.4

Observation 9243 - L2 Version 2
Chandra X-Ray Center

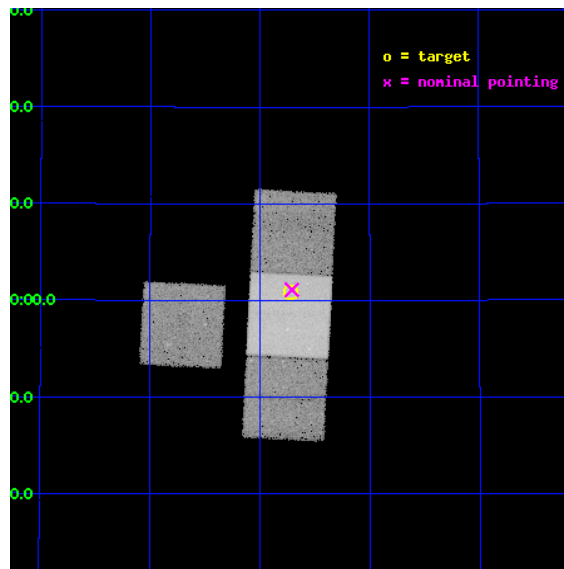
L2 Processing Date : May 17 2012

Contents

1	Front	2
2	OBI	3
2.1	OBI	3
2.1.1	Images	3
2.1.2	Bias	3
2.1.3	Parameters	4
2.1.4	Events	4
2.2	Compared Parameters	5
2.3	Aspect	6
2.4	Star Slots	9
2.4.1	Slot 3	9
2.4.2	Slot 4	10
2.4.3	Slot 5	11
2.4.4	Slot 6	12
2.4.5	Slot 7	13
2.5	FID Slots	14
2.5.1	Slot 0	14
2.5.2	Slot 1	15
2.5.3	Slot 2	16
A	Summary	17
A.1	Status	17
A.2	Comments	17

1 Front

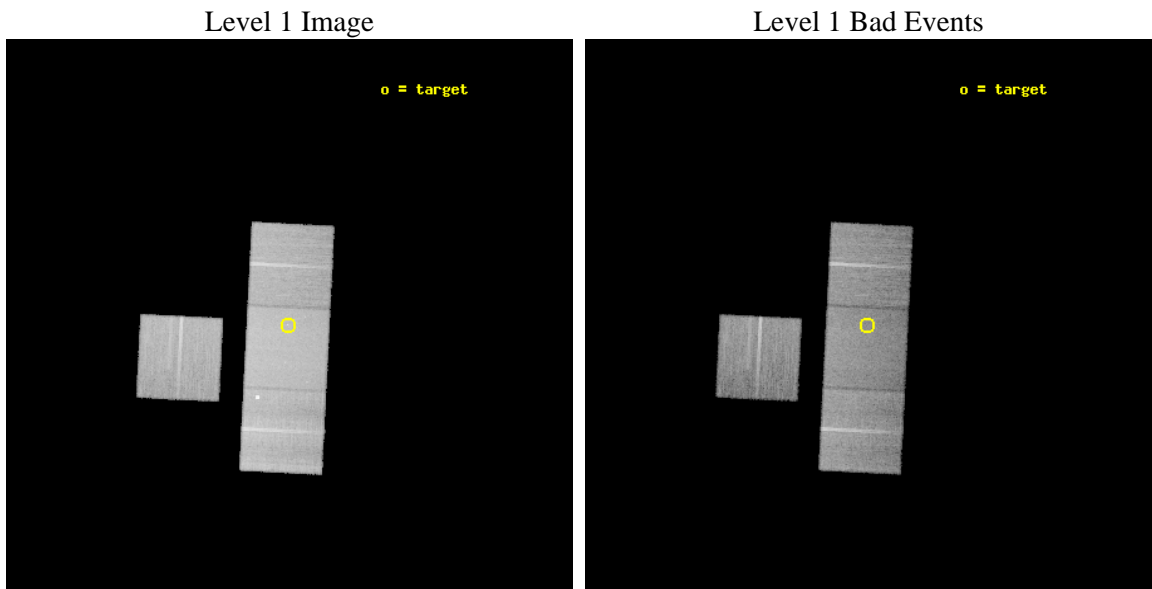
seq_num	701684	Sequence number
obs_id	9243	Observation id
title	Orientation effects in the X-ray and multi-wavelength properties of high-z, 3CRR quasars.	Proposal title
observer	Dr. Belinda Wilkes	Principal investigator
object	3CRR 65	Source name
dtcycle	0	
cycle	P	events from which exps? Prim/Second/Both
ra_targ	35.930833	Observer's specified target RA [deg]
dec_targ	40.014528	Observer's specified target Dec [deg]
ra_nom	35.927243321527	Nominal RA [deg]
dec_nom	40.018530041772	Nominal Dec [deg]
roll_nom	92.888484603412	Nominal Roll [deg]
revision	2	Processing version of data
ontime	21182.300162911	Sum of GTIs [s]
livetime	20905.5378171	Livetime [s]
ontime3	21182.300162911	Sum of GTIs [s]
ontime6	21182.300162911	Sum of GTIs [s]
ontime7	21182.300162911	Sum of GTIs [s]
ontime8	21182.300162911	Sum of GTIs [s]
l2events	183133	Number of level 2 events



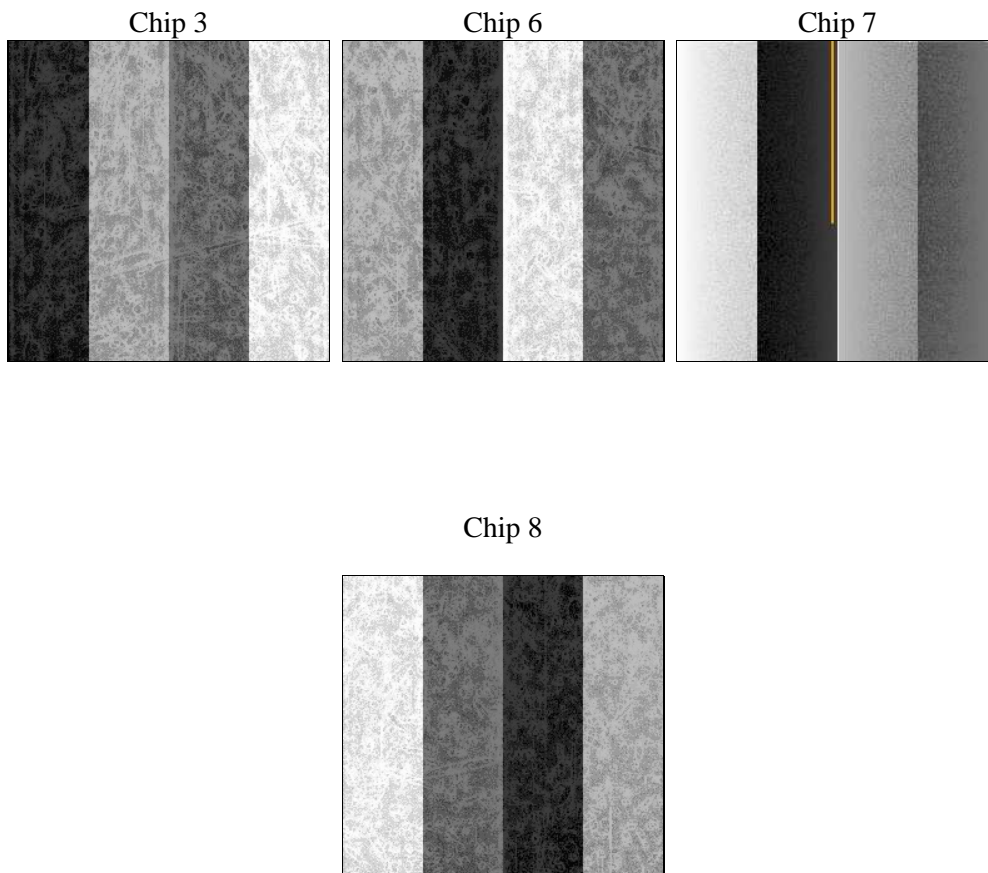
2 OBI

2.1 OBI

2.1.1 Images



2.1.2 Bias



2.1.3 Parameters

obi_num	0	Obi number	sched_exp_time	21000.000000	[s] Scheduled observation exposure time
ascdsver	8.4.4	Processing system revision	ontime	21182.300162911	Sum of GTIs [s]
caldsver	4.4.9	 	ontime3	21182.300162911	Sum of GTIs [s]
date	2012-05-17T04:17:19	Date and time of file creation	ontime6	21182.300162911	Sum of GTIs [s]
revision	2	Processing version of data	ontime7	21182.300162911	Sum of GTIs [s]
			ontime8	21182.300162911	Sum of GTIs [s]
			l1events	1000631	Number of level 1 events

2.1.4 Events

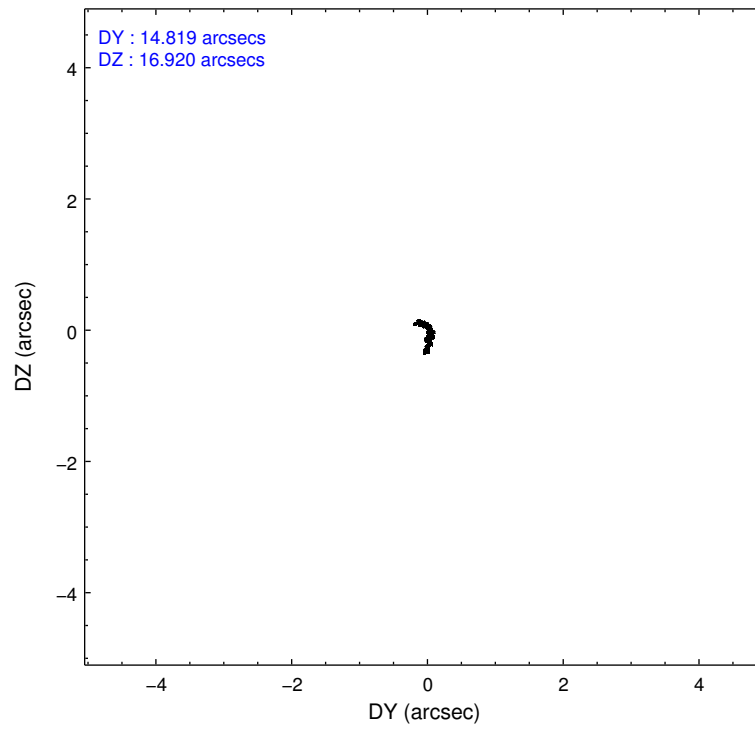
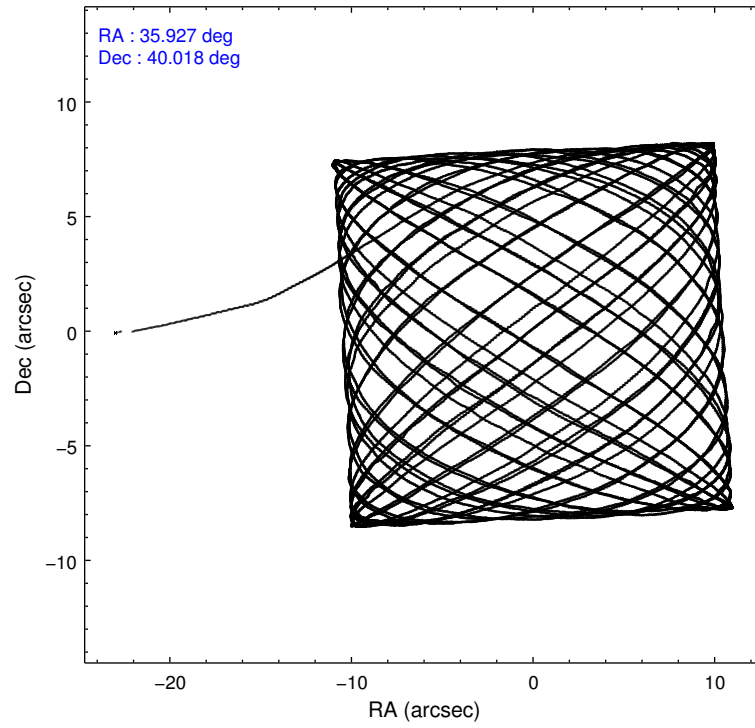
	ccd 3	ccd 6	ccd 7	ccd 8
level 1 events	210639	215138	296286	278568
rejected events	186335	190411	178336	213728
rejected %	88%	88%	60%	76%

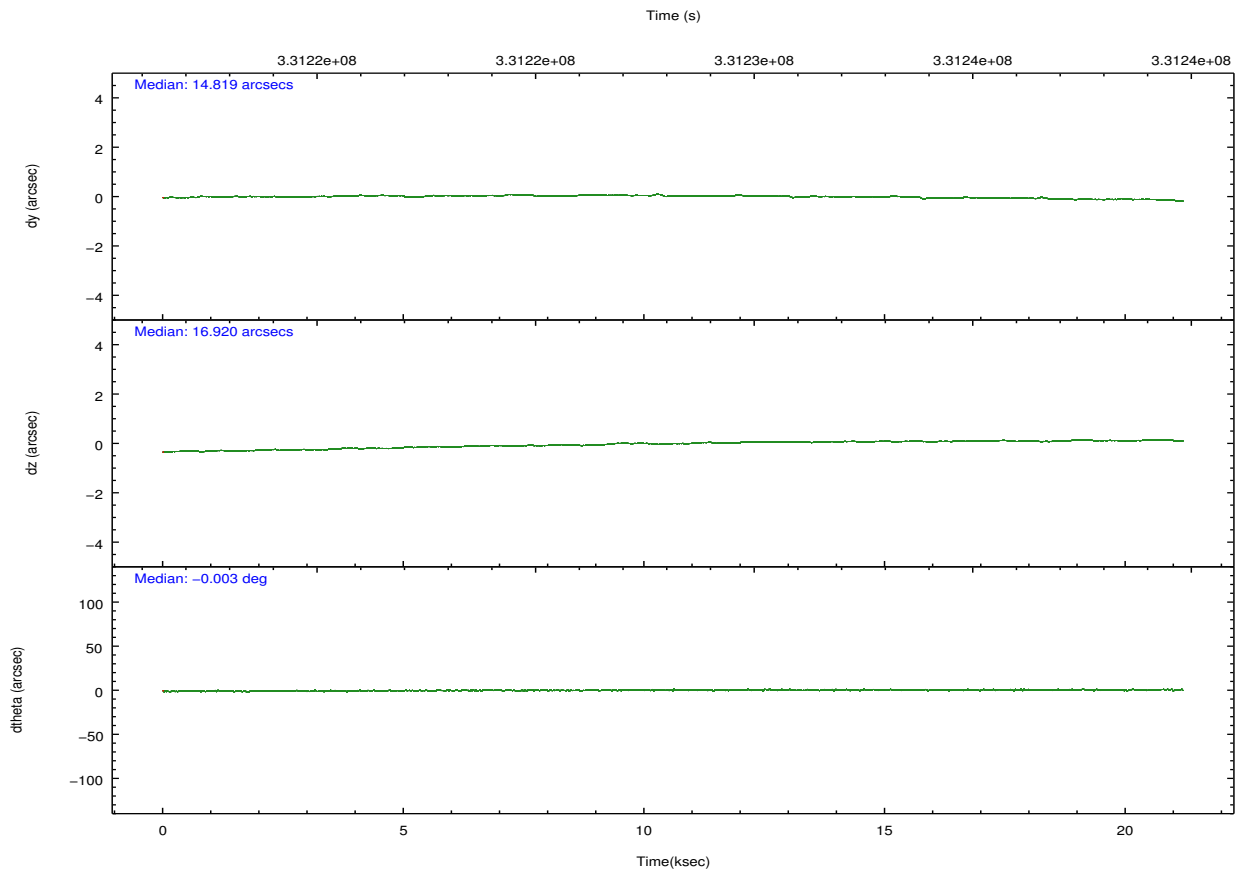
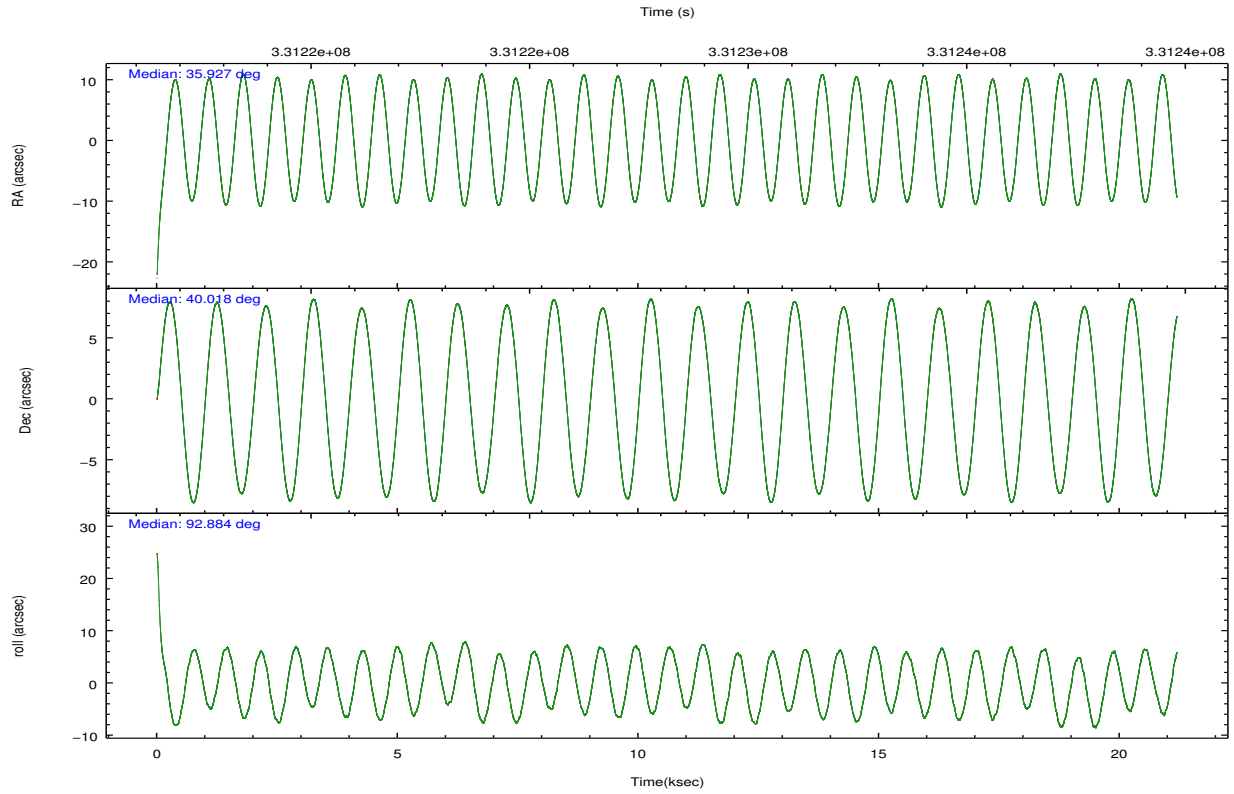
	ccd 3	ccd 6	ccd 7	ccd 8
grade 0 events	11043	10190	10318	23622
	5%	4%	3%	8%
grade 1 events	131	112	329	214
	0%	0%	0%	0%
grade 2 events	5044	5762	25390	14477
	2%	2%	8%	5%
grade 3 events	2425	2351	10270	6788
	1%	1%	3%	2%
grade 4 events	2380	2371	10399	6309
	1%	1%	3%	2%
grade 5 events	9960	10217	27399	13671
	4%	4%	9%	4%
grade 6 events	4552	5250	67127	16702
	2%	2%	22%	5%
grade 7 events	175104	178885	145054	196785
	83%	83%	48%	70%

2.2 Compared Parameters

Parameter	Planned	Actual	Parameter	Planned	Actual
Instrument	ACIS	ACIS	Obspar format version number	7	7
Detector	ACIS-3678	ACIS-3678	Obspar file type	PREDICTED	ACTUAL
Grating	NONE	NONE	Obspar update status	NONE	UPDATED
Data mode	FAINT	FAINT	CCD I0 on	N	N
Observation mode	POINTING	POINTING	CCD I1 on	N	N
[deg] Pointing RA	35.947027	35.92724332152703	CCD I2 on	N	N
[deg] Pointing Dec	39.995756	40.01853004177174	CCD I3 on	O1	Y
[deg] Pointing Roll	92.719134	92.88848460341225	CCD S0 on	N	N
[mm] SIM focus pos	-0.684267	-0.6828225247311905	CCD S1 on	N	N
[mm] SIM defocus	0	0.001444936568705701	CCD S2 on	O3	Y
[mm] SIM translation stage pos	-190.132523	-190.1425803651734	CCD S3 on	Y	Y
[mm] SIM translation stage offset	0	0.01005778216563158	CCD S4 on	O2	Y
[s] Observation start time (MET)	331217737.184000	331216313.57856	CCD S5 on	N	N
Observation start date	2008-06-30T12:54:32	2008-06-30T12:31:53	Number of optional ACIS chips dropped	0	0
[s] Observation end time (MET)	331238737.184000	331239600.0422	On-chip summing requested	N	N
Observation end date	2008-06-30T18:44:32	2008-06-30T19:00:00	Subarray requested	NONE	NONE
Read mode	TIMED	TIMED	Alternating exposures requested	N	N
			[s] Primary exposure time	0.000000	3.1

2.3 Aspect



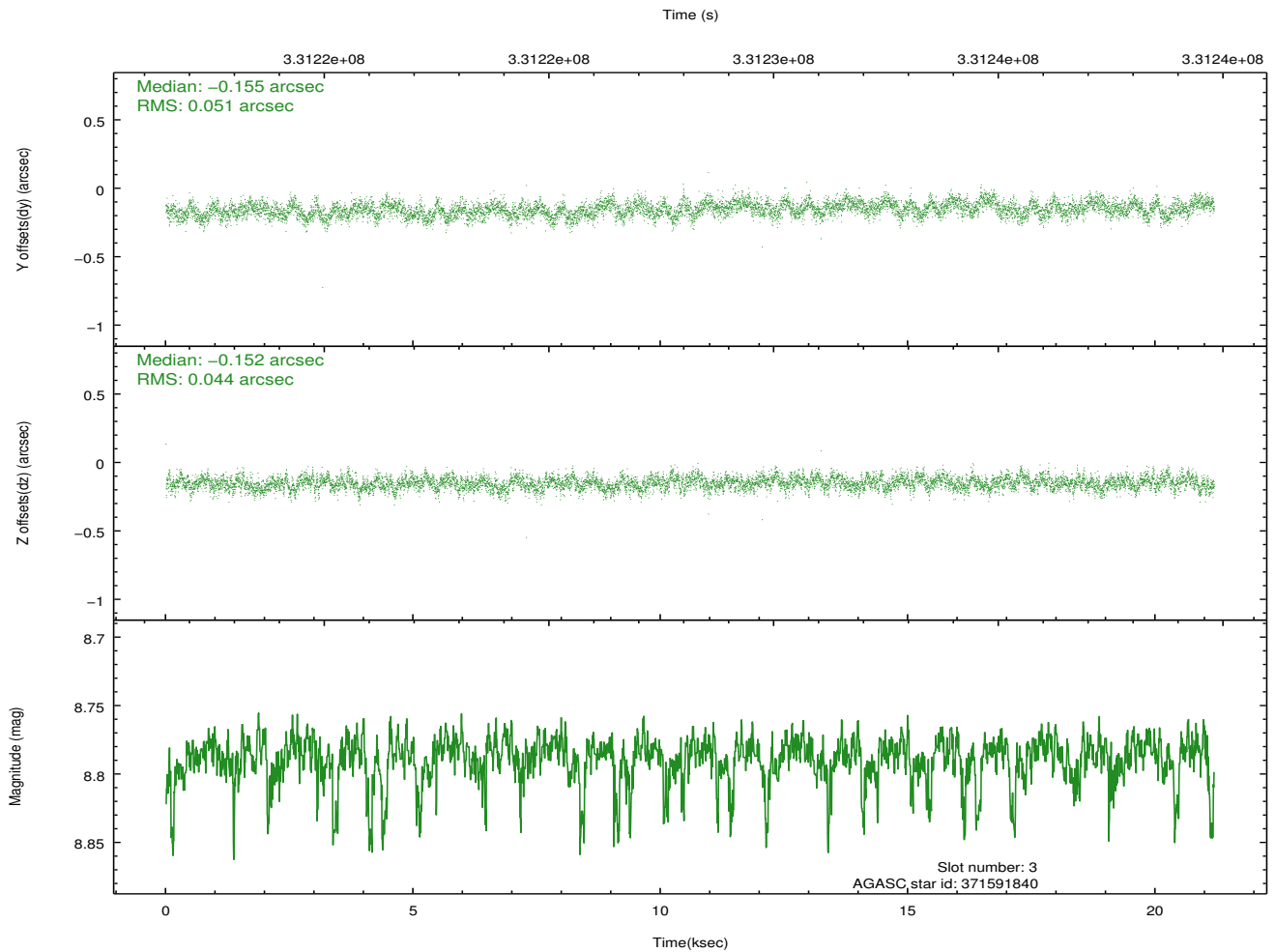
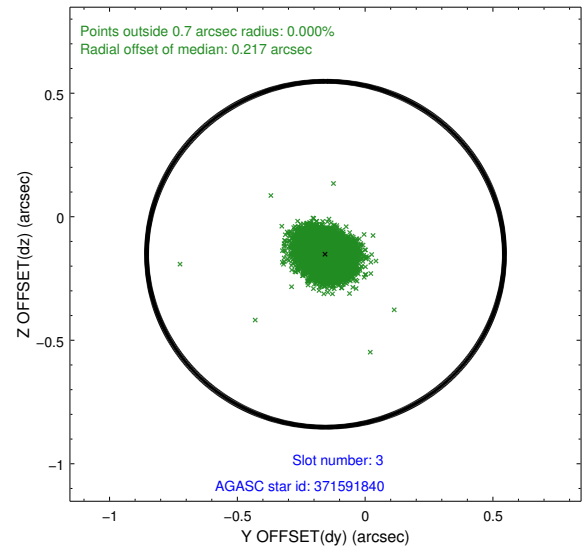
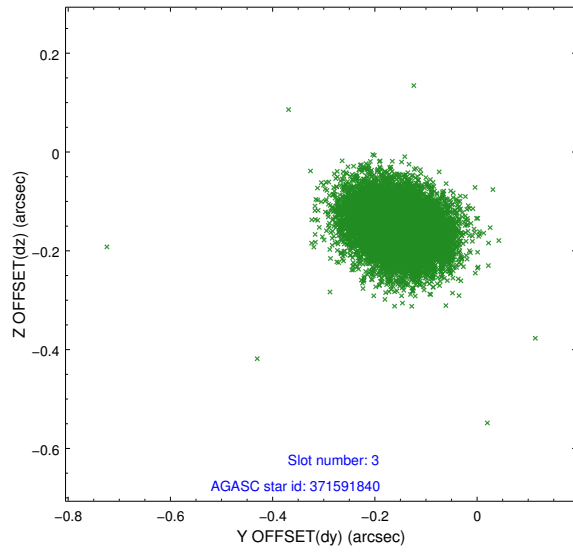


Slot Statistics

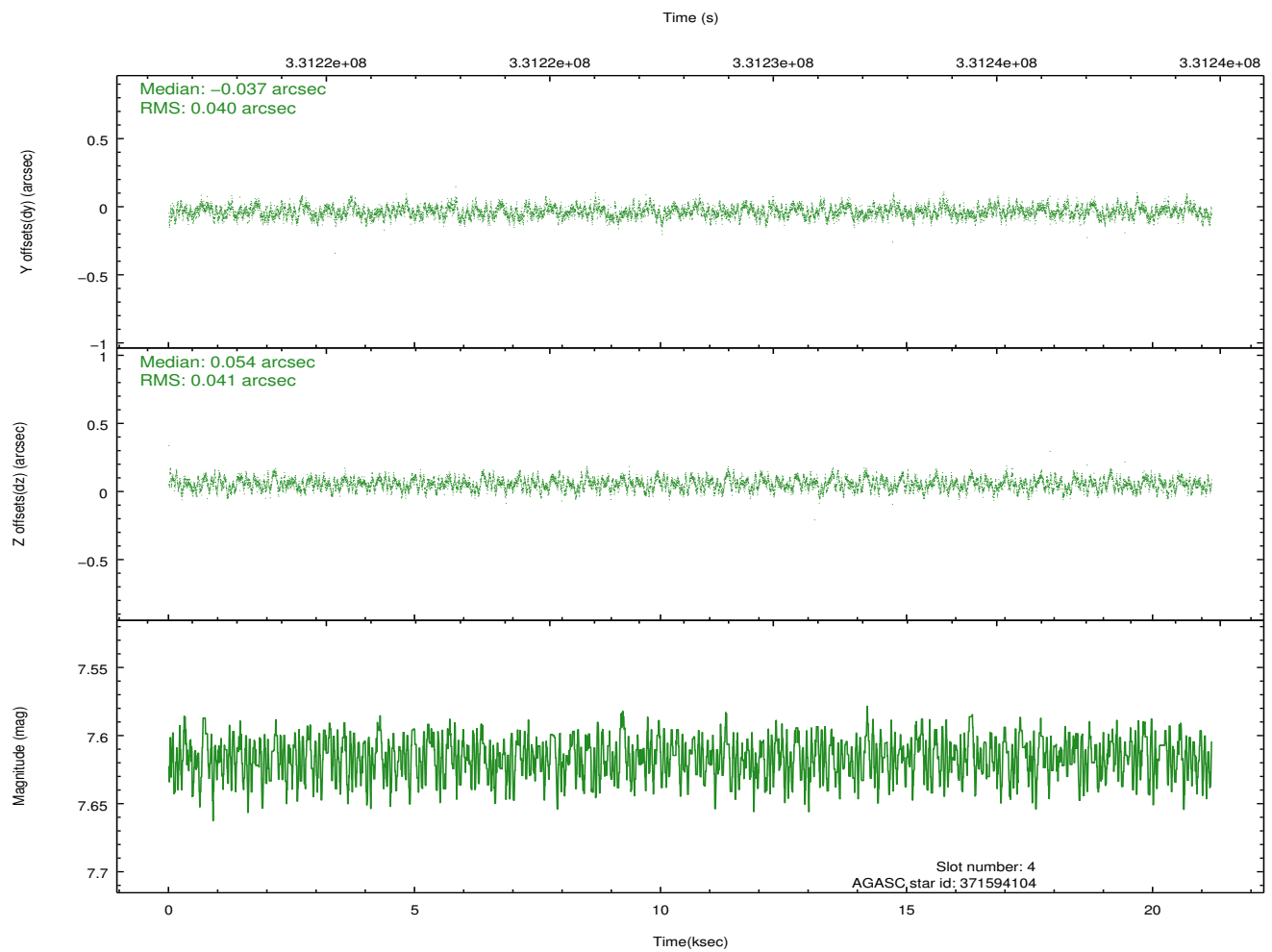
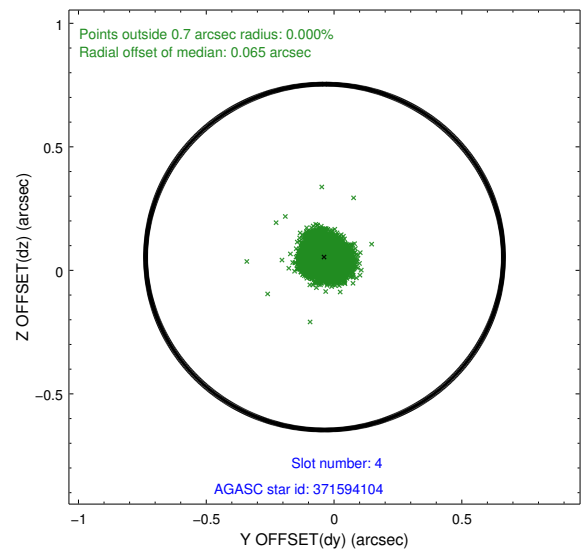
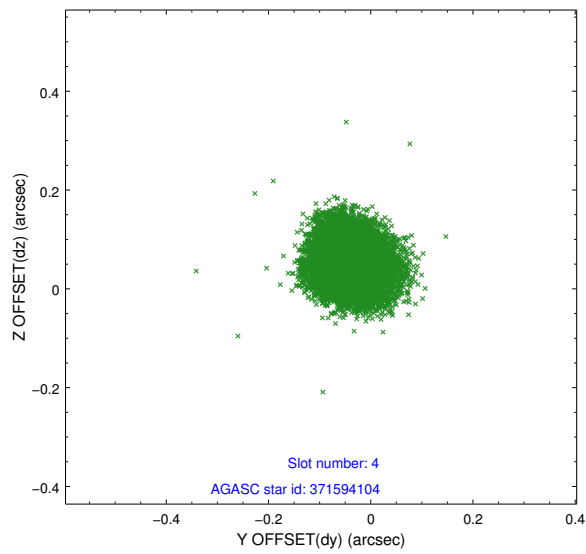
slot	status	id	mag	n_pts	med_dy	med_dz	dr1	dr2	ra	dec	mean_y	mean_z
0	FID	ACIS-S-2	6.88	5169	-0.059	-0.024	0.013	0.019	0.000000	0.000000	-767.86	-1738.26
1	FID	ACIS-S-4	6.97	5169	0.155	0.035	0.012	0.018	0.000000	0.000000	2145.58	170.05
2	FID	ACIS-S-5	7.00	5169	-0.127	-0.002	0.016	0.022	0.000000	0.000000	-1820.52	163.95
3	GUIDE	371591840	8.79	10313	-0.155	-0.152	0.072	0.116	35.678297	40.563514	2077.53	637.45
4	GUIDE	371594104	7.62	10335	-0.037	0.054	0.063	0.097	36.042456	40.094603	342.69	-280.73
5	GUIDE	371598736	9.29	10325	0.117	-0.143	0.092	0.147	35.666625	39.831984	-550.59	802.30
6	GUIDE	371599976	9.11	10325	-0.045	0.276	0.081	0.129	36.733936	40.246632	809.40	-2202.44
7	GUIDE	371070424	8.25	10327	0.119	-0.033	0.067	0.110	36.045116	39.346084	-2348.58	-162.01

2.4 Star Slots

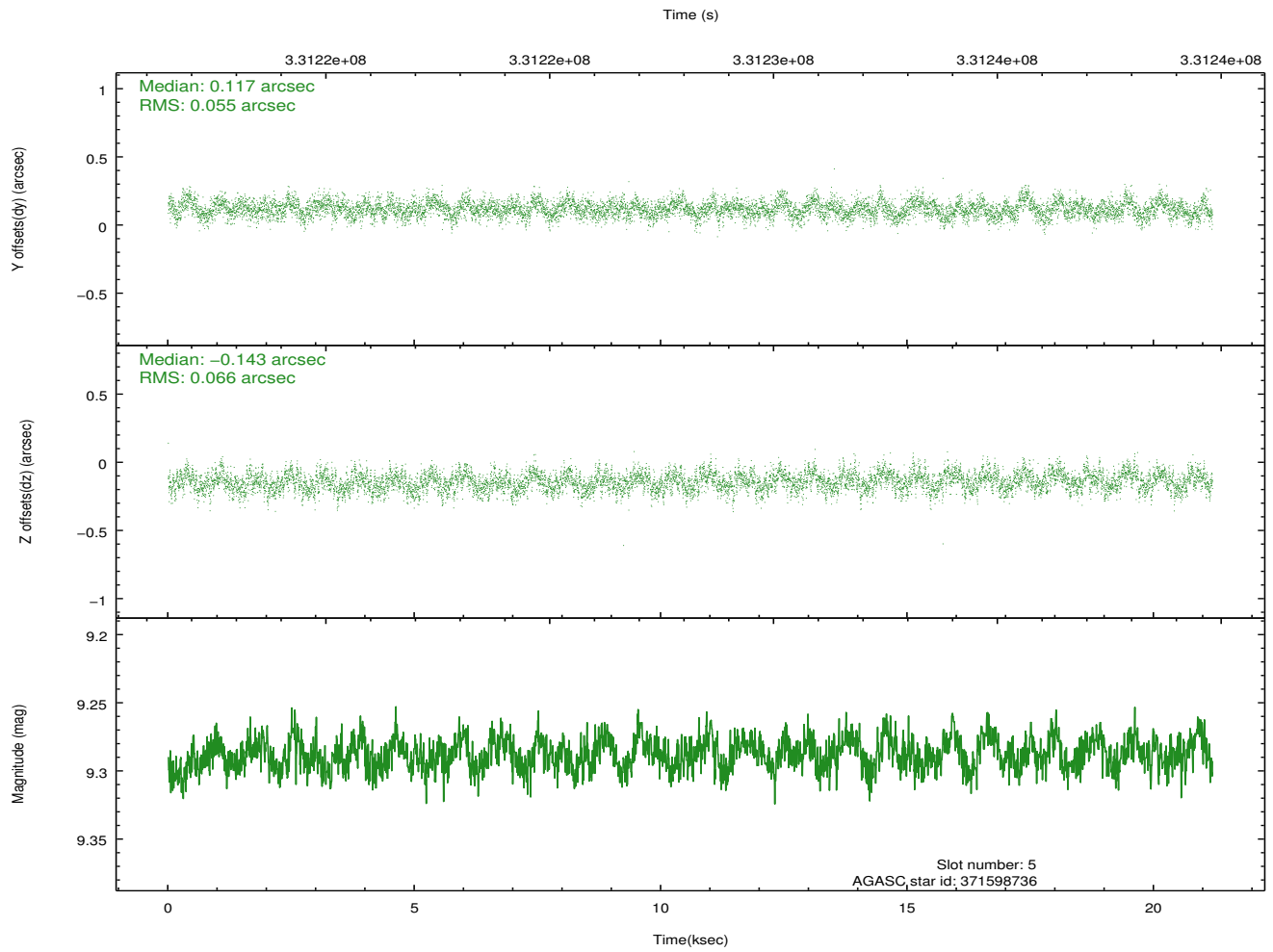
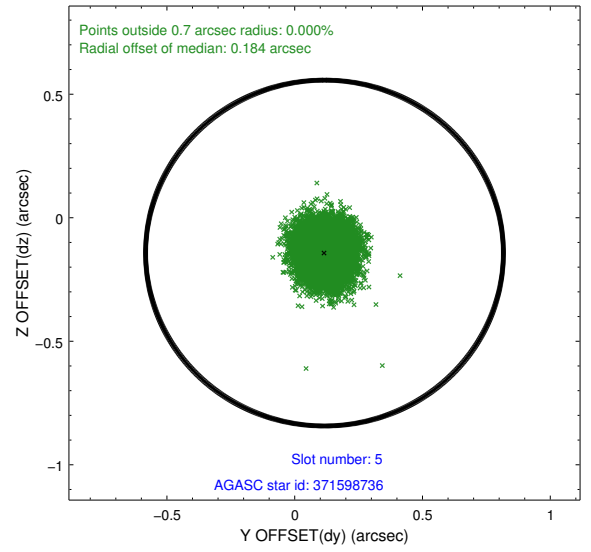
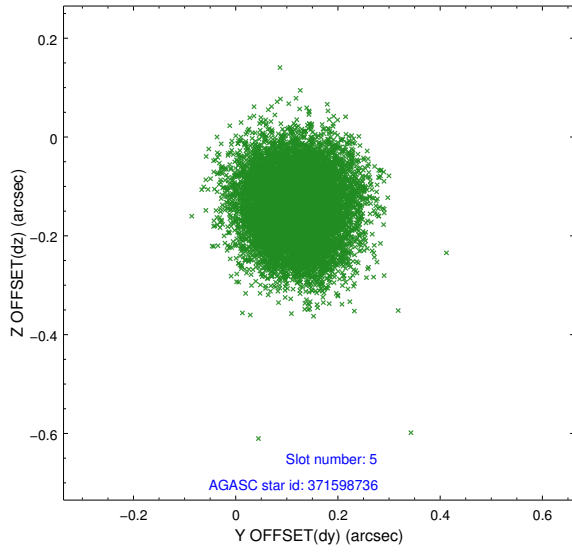
2.4.1 Slot 3



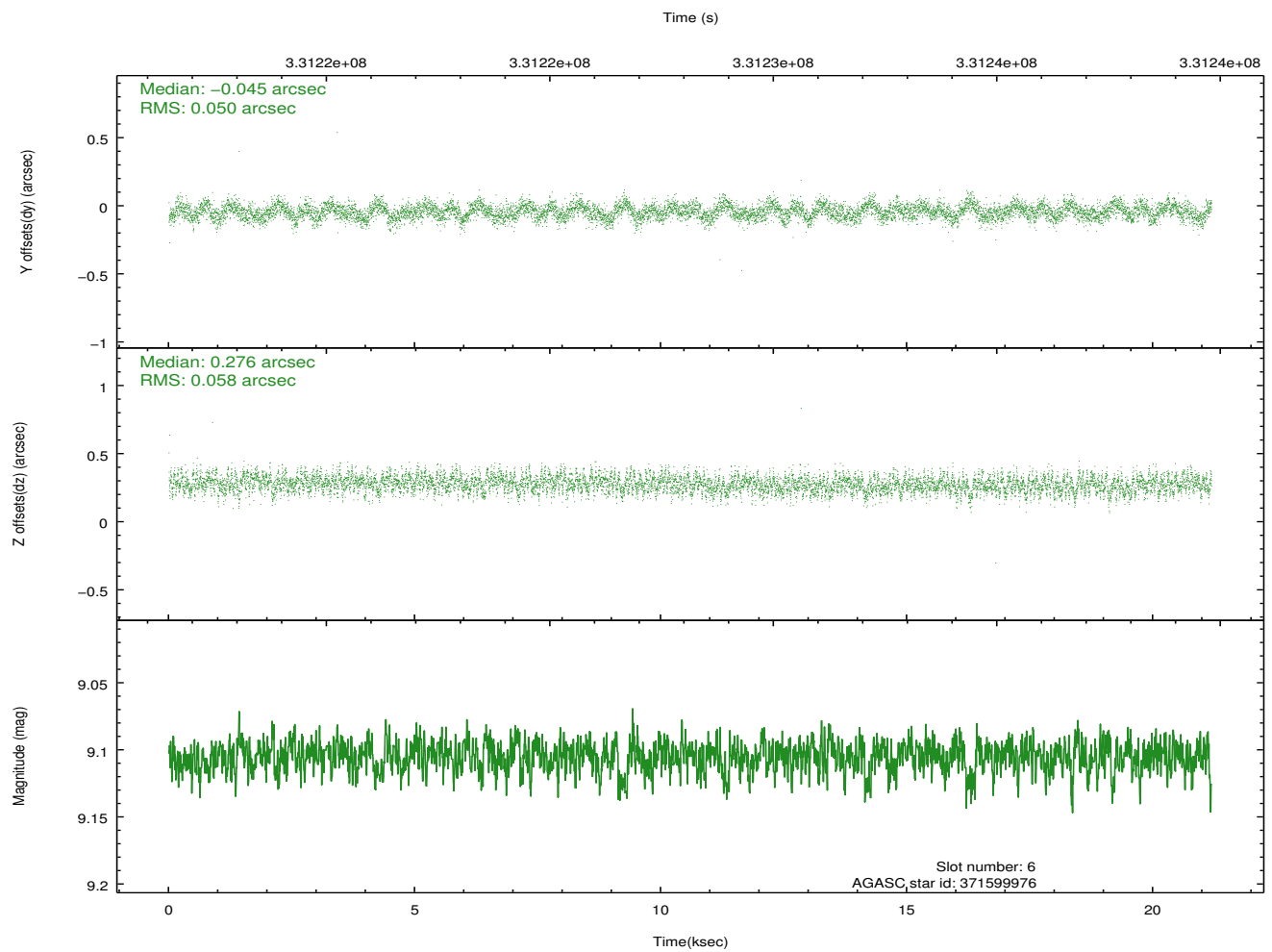
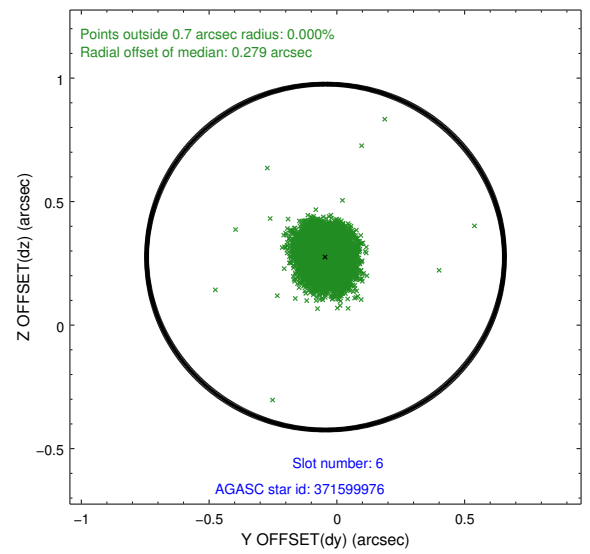
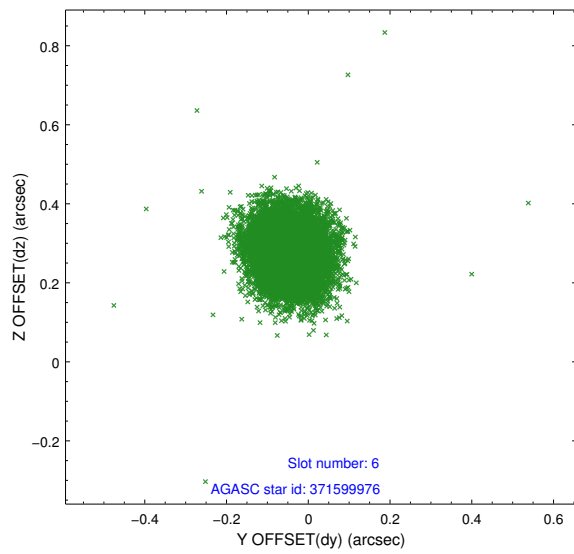
2.4.2 Slot 4



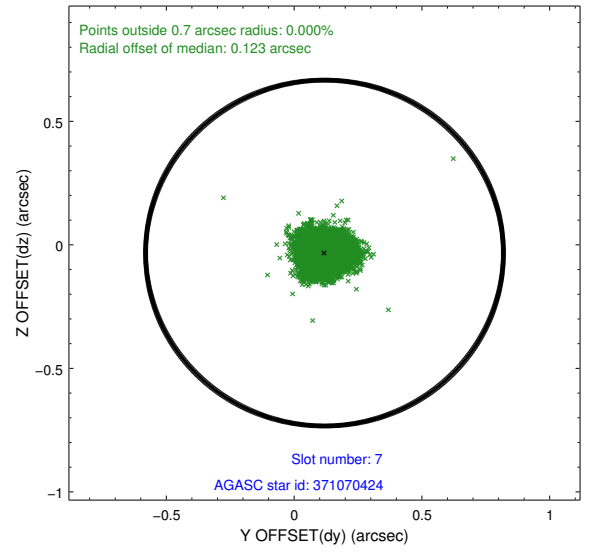
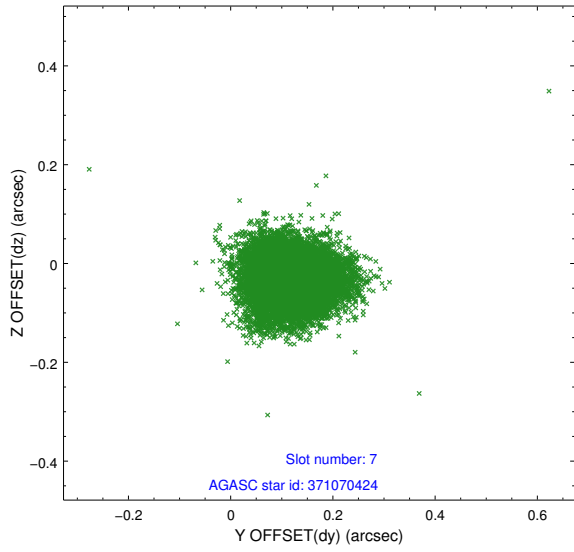
2.4.3 Slot 5



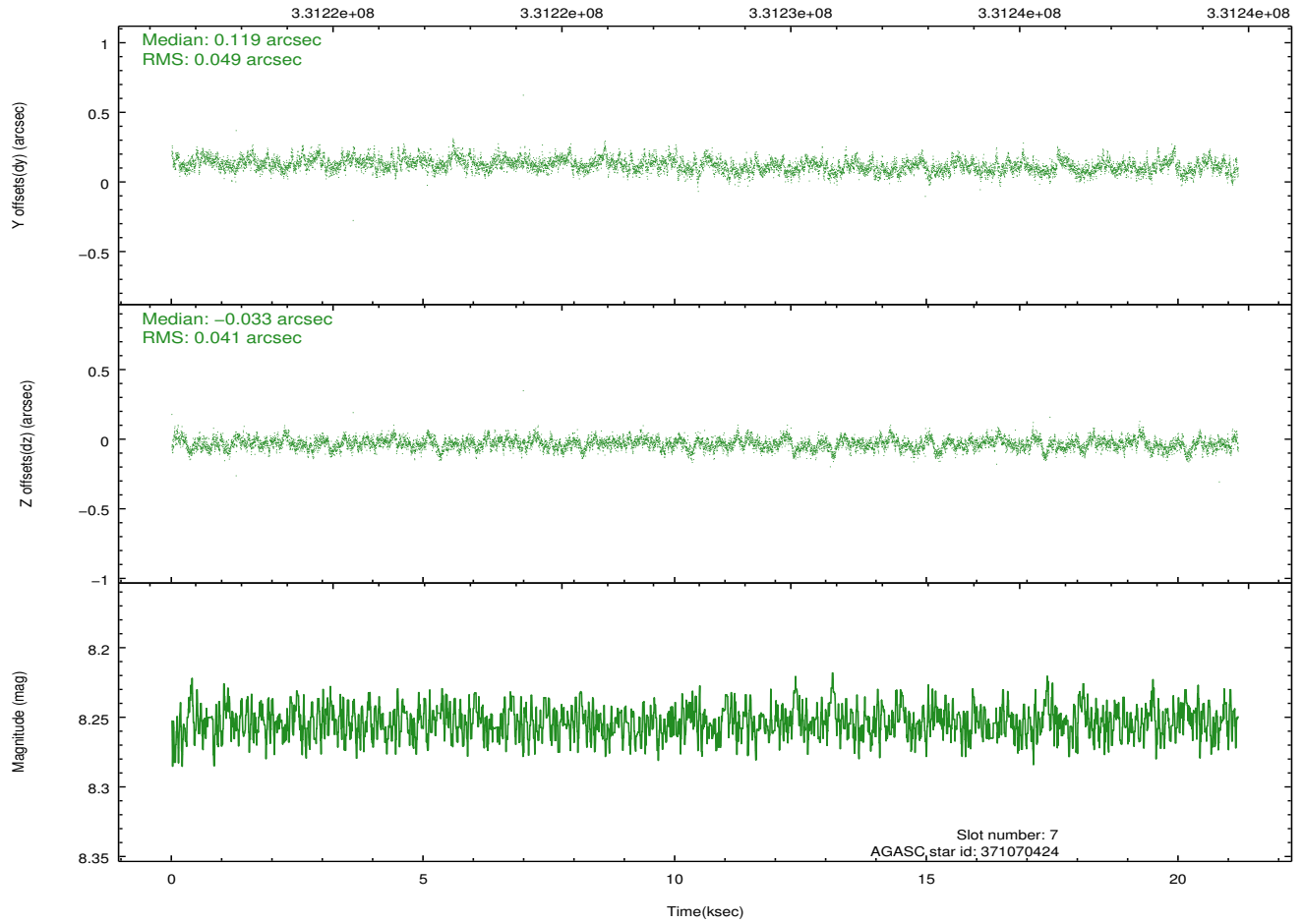
2.4.4 Slot 6



2.4.5 Slot 7

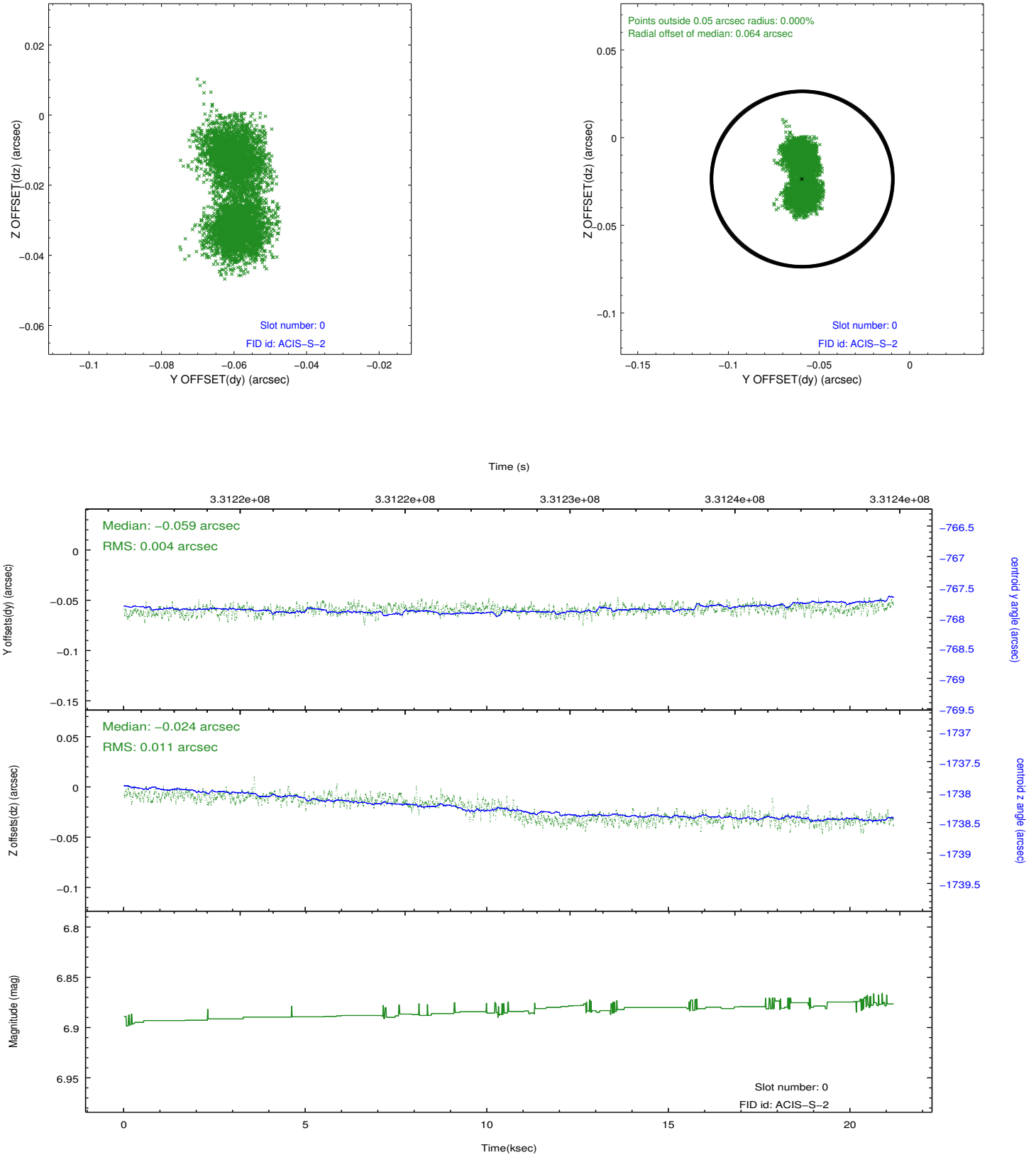


Time (s)

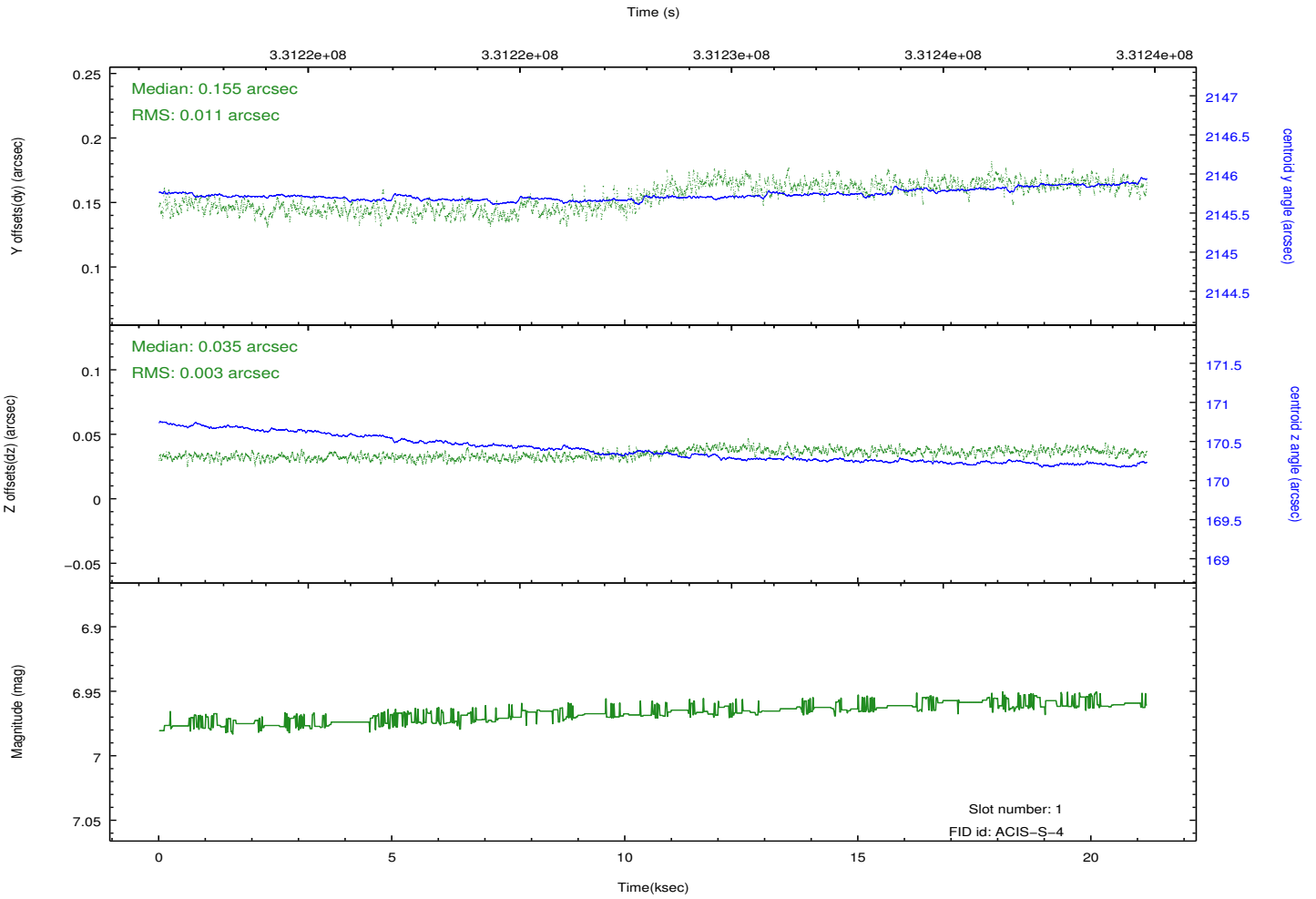
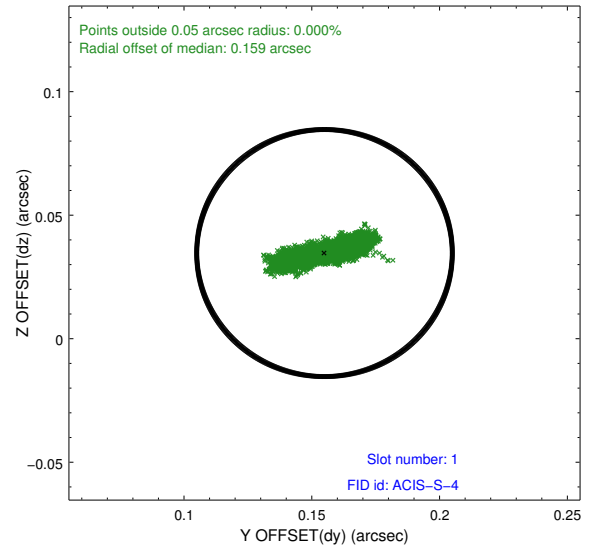
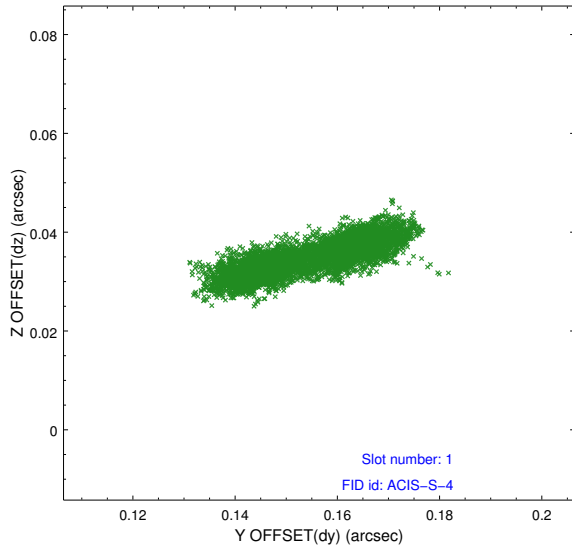


2.5 FID Slots

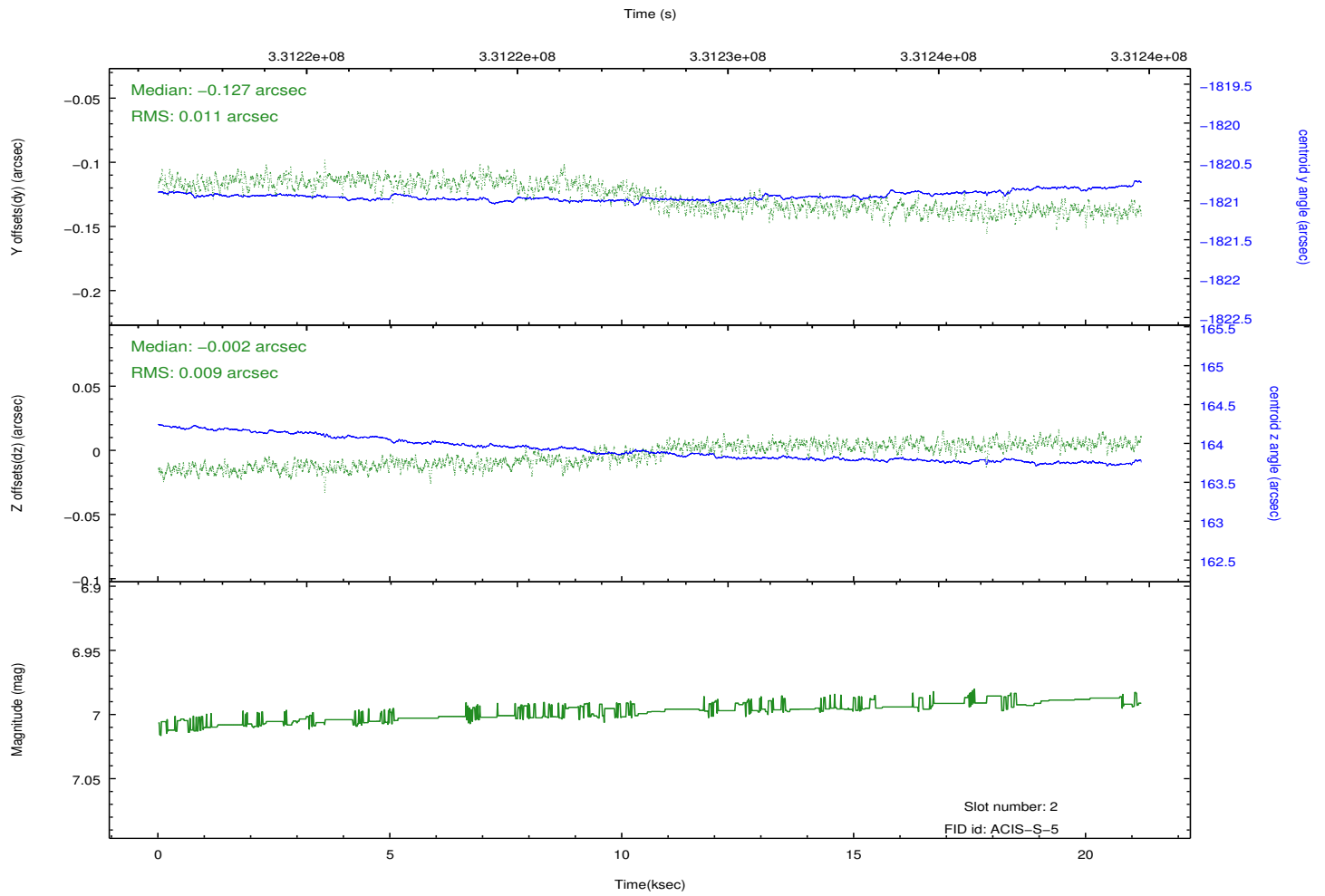
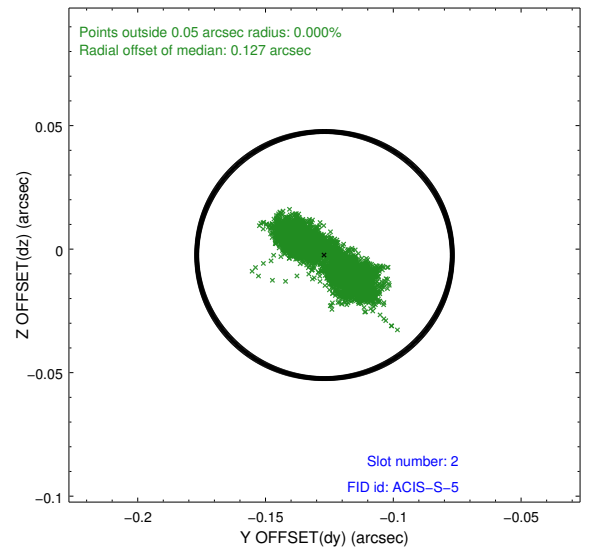
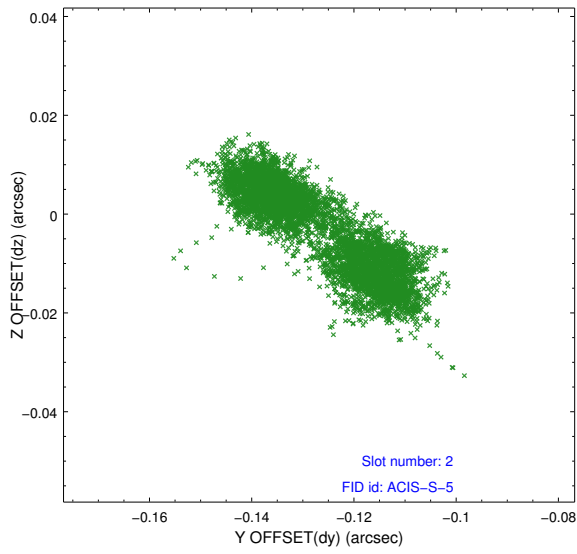
2.5.1 Slot 0



2.5.2 Slot 1



2.5.3 Slot 2



A Summary

A.1 Status

V&V Scientist	Jen Lauer
V&V Date (YYYY-MM-DD)	2012.05.22
V&V Edition	1
V&V Disposition and Status	OK
V&V Charge Time	21.1823001

A.2 Comments