

V&V Reference Report

L2 ASCDS Version : 8.4.5

Observation 953 - L2 Version 4
Chandra X-Ray Center

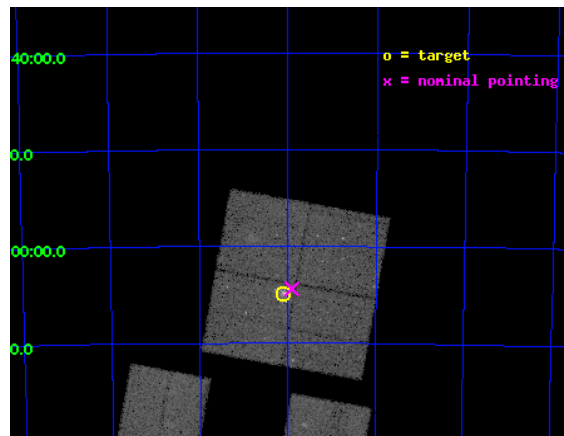
L2 Processing Date : Aug 24 2012

Contents

1	Front	2
2	OBI	3
2.1	OBI	3
2.1.1	Images	3
2.1.2	Bias	3
2.1.3	Parameters	4
2.1.4	Events	4
2.2	Compared Parameters	5
2.3	Aspect	6
2.4	Star Slots	9
2.4.1	Slot 3	9
2.4.2	Slot 4	10
2.4.3	Slot 5	11
2.4.4	Slot 6	12
2.4.5	Slot 7	13
2.5	FID Slots	14
2.5.1	Slot 0	14
2.5.2	Slot 1	15
2.5.3	Slot 2	16
A	Summary	17
A.1	Status	17
A.2	Comments	17

1 Front

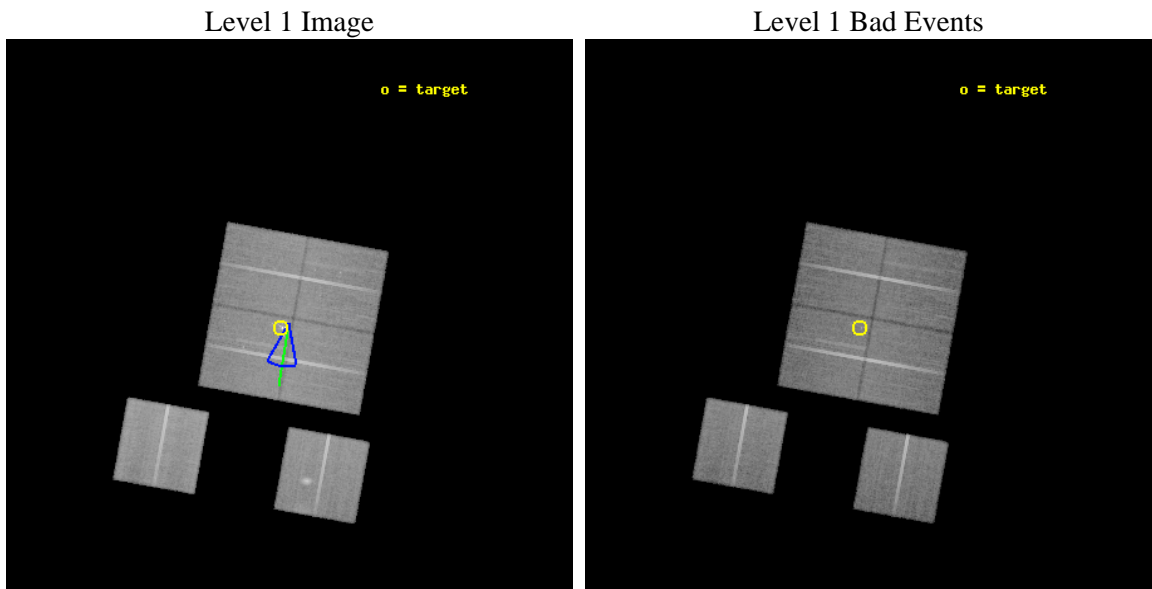
seq_num	300028	Sequence number
obs_id	953	Observation id
title	DIFFUSE X-RAY EMISSION IN GLOBULARS: HOT GAS VS. NON-THERMAL EMISSION IN 47 TUC	Proposal title
observer	Dr. Stephen Murray	Principal investigator
object	47 TUC	Source name
dtcycle	0	
cycle	P	events from which exps? Prim/Second/Both
ra_targ	6.0243	Observer's specified target RA [deg]
dec_targ	-72.0809	Observer's specified target Dec [deg]
ra_nom	5.9769455490657	Nominal RA [deg]
dec_nom	-72.073046248971	Nominal Dec [deg]
roll_nom	190.3187397053	Nominal Roll [deg]
revision	4	Processing version of data
ontime	32080.000029862	Sum of GTIs [s]
livetime	31673.783753227	Livetime [s]
ontime0	32073.518259034	Sum of GTIs [s]
ontime1	32080.000029862	Sum of GTIs [s]
ontime2	32080.000029862	Sum of GTIs [s]
ontime3	32080.000029862	Sum of GTIs [s]
ontime6	32080.000029862	Sum of GTIs [s]
ontime8	32076.759039715	Sum of GTIs [s]
l2events	148623	Number of level 2 events



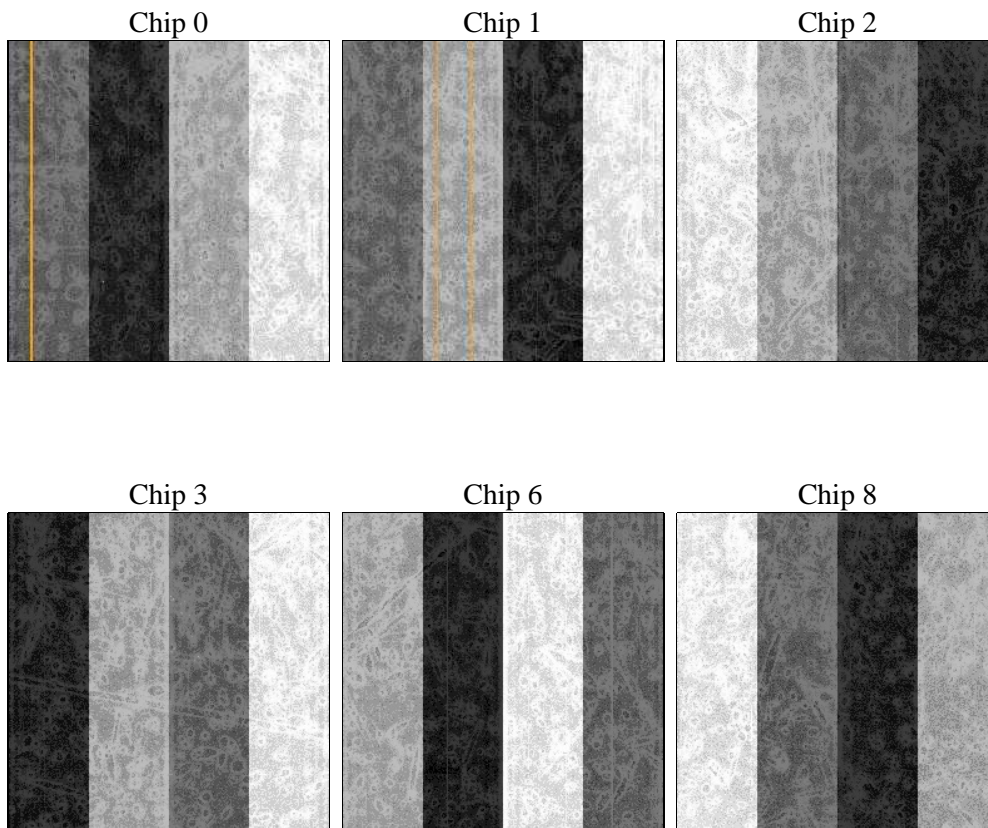
2 OBI

2.1 OBI

2.1.1 Images



2.1.2 Bias



2.1.3 Parameters

obi_num	0	Obi number	sched_exp_time	33000.000000	[s] Scheduled observation exposure time
ascdsver	8.4.5	Processing system revision	ontime	32080.000029862	Sum of GTIs [s]
caldbver	4.5.1.1	 	ontime0	32073.518259034	Sum of GTIs [s]
date	2012-08-24T14:25:36	Date and time of file creation	ontime1	32080.000029862	Sum of GTIs [s]
revision	4	Processing version of data	ontime2	32080.000029862	Sum of GTIs [s]
			ontime3	32080.000029862	Sum of GTIs [s]
			ontime6	32080.000029862	Sum of GTIs [s]
			ontime8	32076.759039715	Sum of GTIs [s]
			l1events	1459220	Number of level 1 events

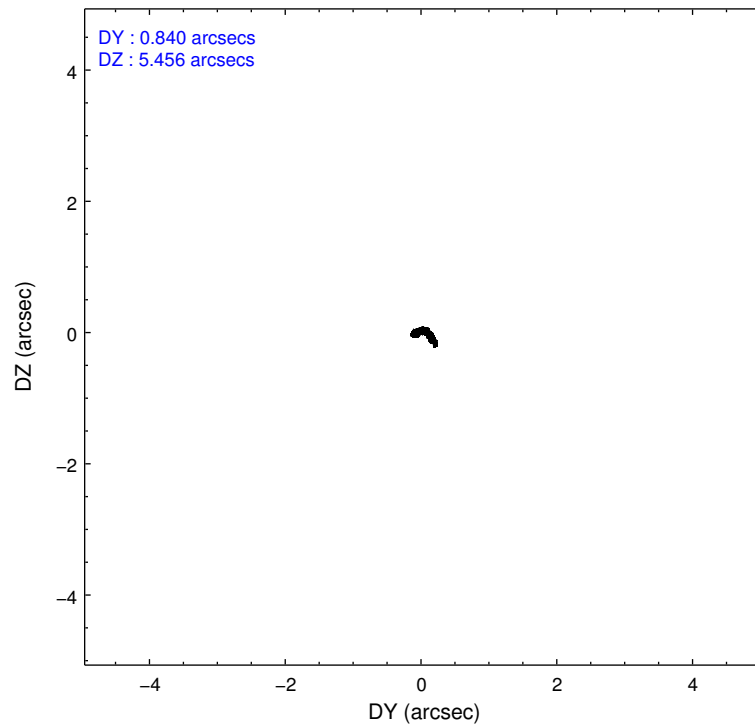
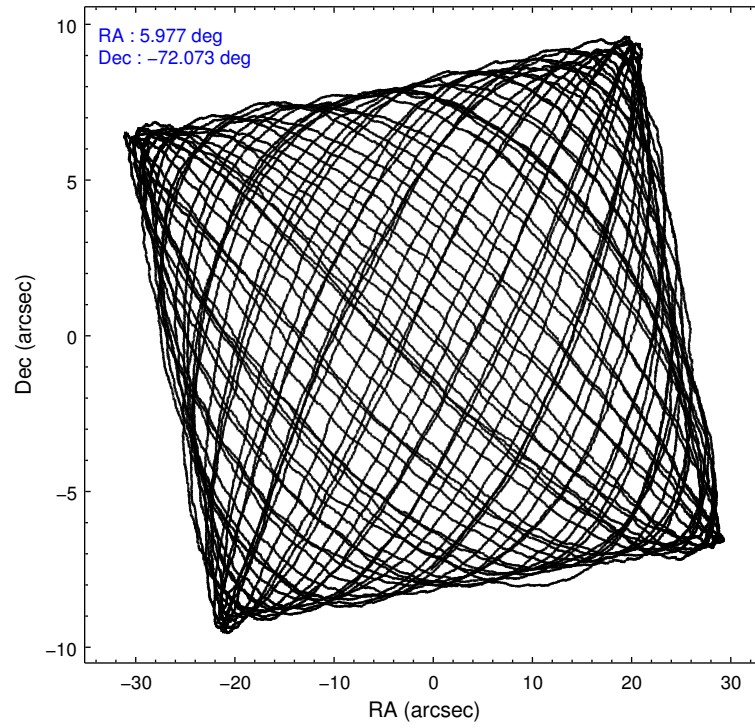
2.1.4 Events

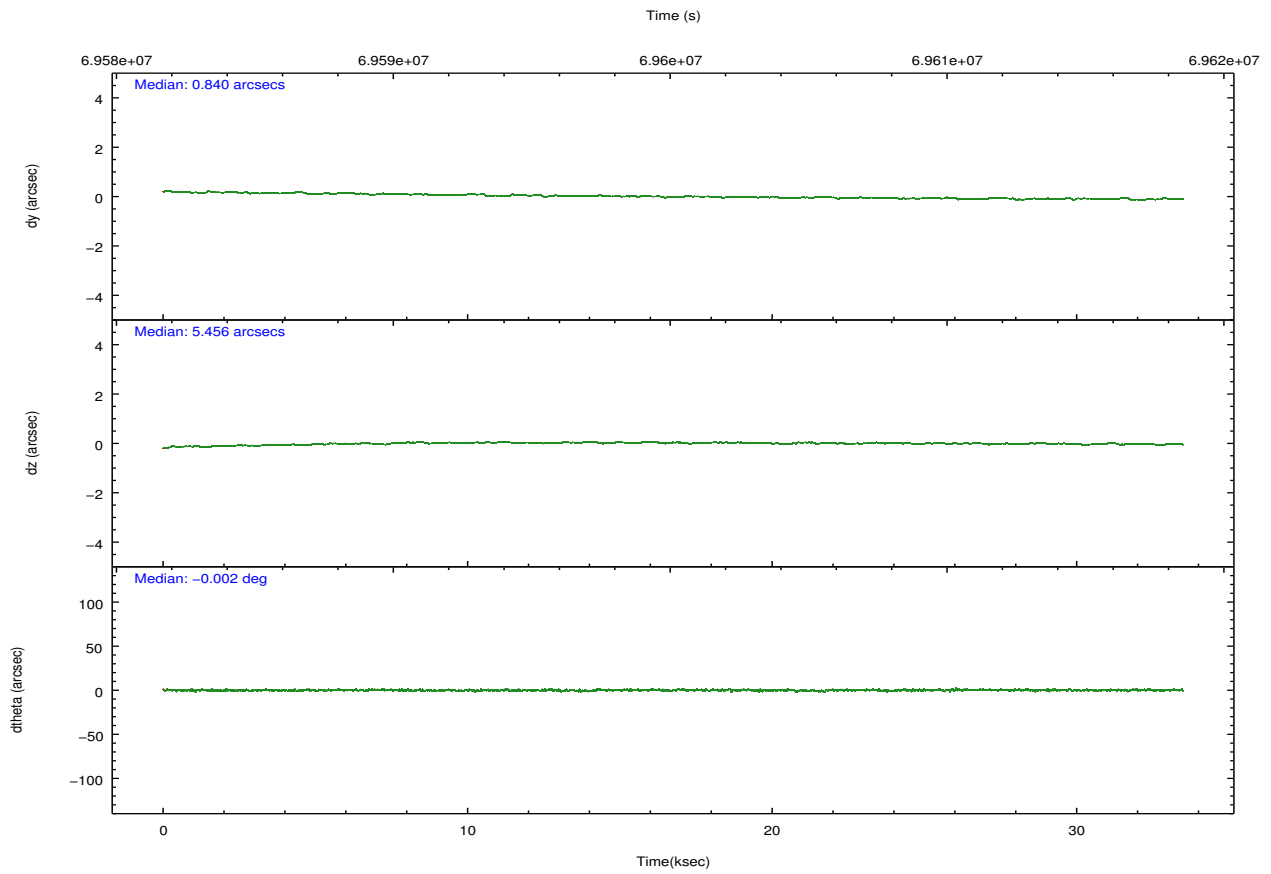
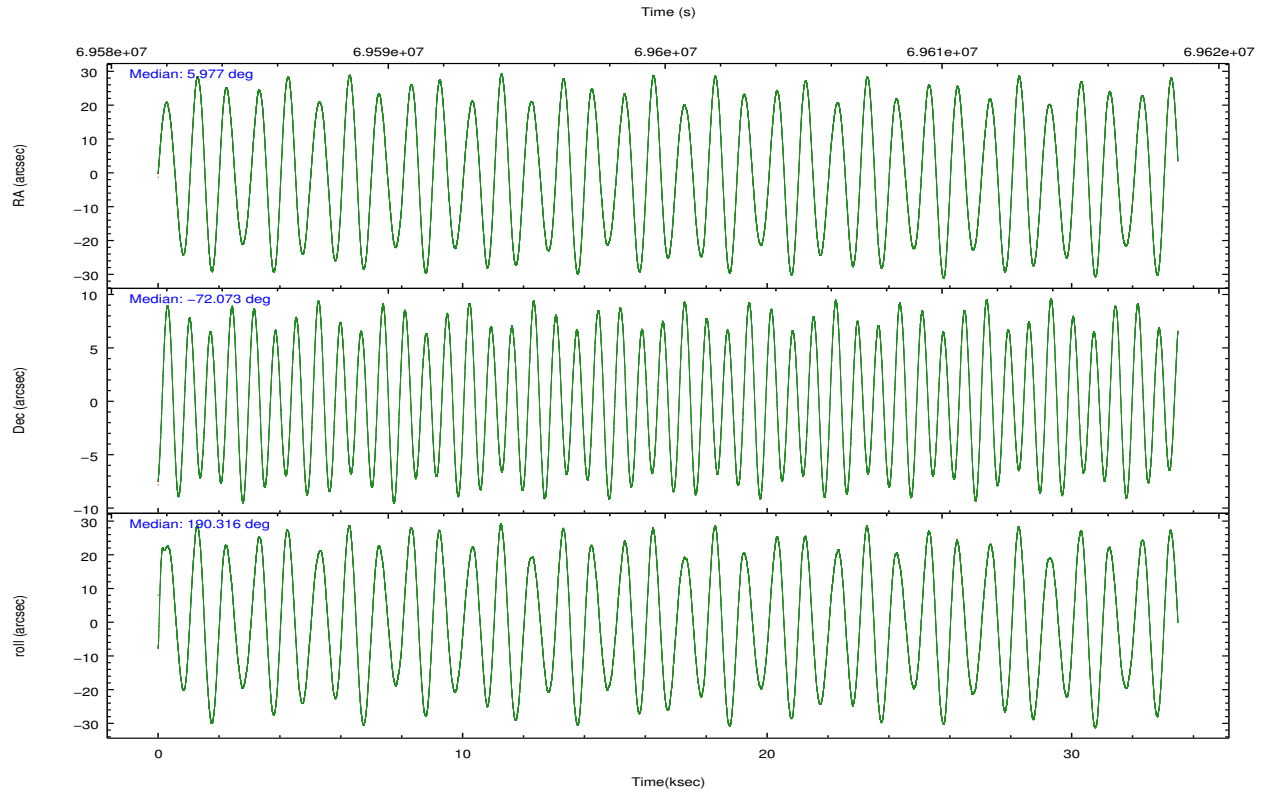
	ccd 0	ccd 1	ccd 2	ccd 3	ccd 6	ccd 8		ccd 0	ccd 1	ccd 2	ccd 3	ccd 6	ccd 8
level 1 events	218044	219157	241692	242788	240298	297241	grade 0 events	11226	11637	11039	18436	18374	16964
rejected events	192522	192100	216816	209220	206355	242845		5%	5%	4%	7%	7%	5%
rejected %	88%	87%	89%	86%	85%	81%	grade 1 events	120	107	93	304	136	172
								0%	0%	0%	0%	0%	0%
							grade 2 events	5139	5157	4966	5528	5395	11513
								2%	2%	2%	2%	2%	3%
							grade 3 events	2597	2785	2327	2628	2684	6136
								1%	1%	0%	1%	1%	2%
							grade 4 events	2427	2858	2395	2620	2763	5670
								1%	1%	0%	1%	1%	1%
							grade 5 events	7242	7859	6975	7838	8260	11025
								3%	3%	2%	3%	3%	3%
							grade 6 events	4141	4630	4150	4359	4733	14117
								1%	2%	1%	1%	1%	4%
							grade 7 events	185152	184124	209747	201075	197953	231644
								84%	84%	86%	82%	82%	77%

2.2 Compared Parameters

Parameter	Planned	Actual	Parameter	Planned	Actual
Instrument	ACIS	ACIS	Obspar format version number	7	7
Detector	ACIS-012368	ACIS-012368	Obspar file type	PREDICTED	ACTUAL
Grating	NONE	NONE	Obspar update status	NONE	UPDATED
Data mode	FAINT	FAINT	Number of optional ACIS chips dropped	0	0
Observation mode	POINTING	POINTING	On-chip summing requested	N	N
[deg] Pointing RA	6.045697	5.976945549065737	Subarray requested	NONE	NONE
[deg] Pointing Dec	-72.055348	-72.07304624897142	Alternating exposures requested	N	N
[deg] Pointing Roll	190.175462	190.3187397053002	[s] Primary exposure time	0.000000	3.2
[deg] Roll angle	190.000000	190.000000			
[deg] Roll tolerance	20.000000	20.000000			
Roll constraint allows 180D rotation	N	N			
[mm] SIM focus pos	-0.782348	-0.7809083437167272			
[mm] SIM defocus	0	0.001439871863259334			
[mm] SIM translation stage pos	-233.592463	-233.5874344608287			
[mm] SIM translation stage offset	0	-0.005018542100998502			
[s] Observation start time (MET)	69583850.184000	69583184.113904			
Observation start date	2000-03-16T08:49:46	2000-03-16T08:39:44			
[s] Observation end time (MET)	69616850.184000	69616983.49013899			
Observation end date	2000-03-16T17:59:46	2000-03-16T18:03:03			
Read mode	TIMED	TIMED			

2.3 Aspect



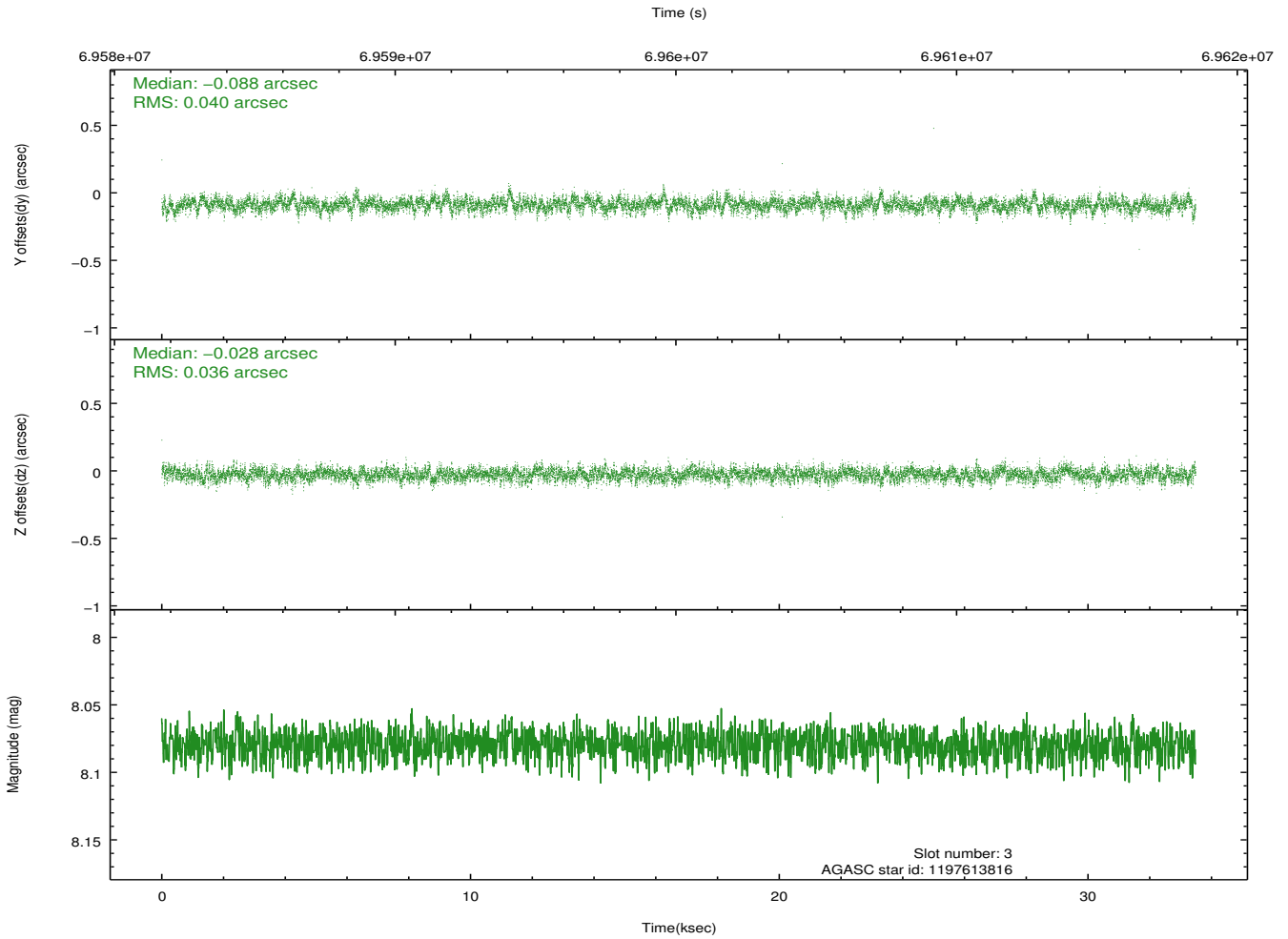
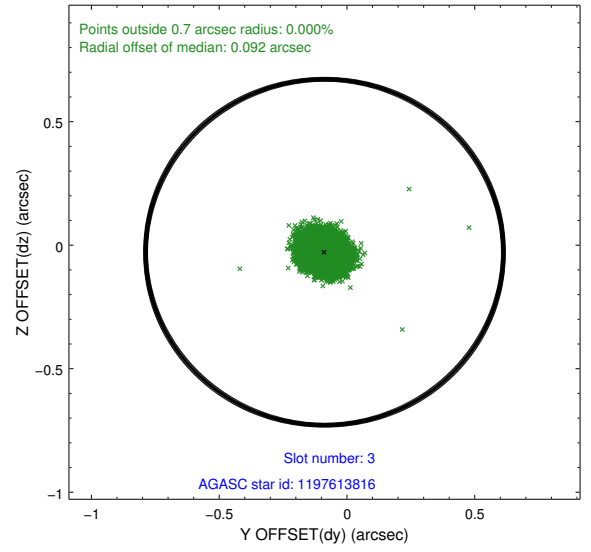
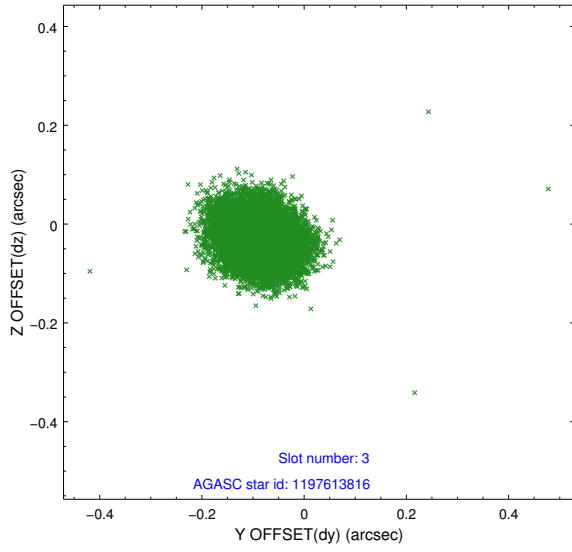


Slot Statistics

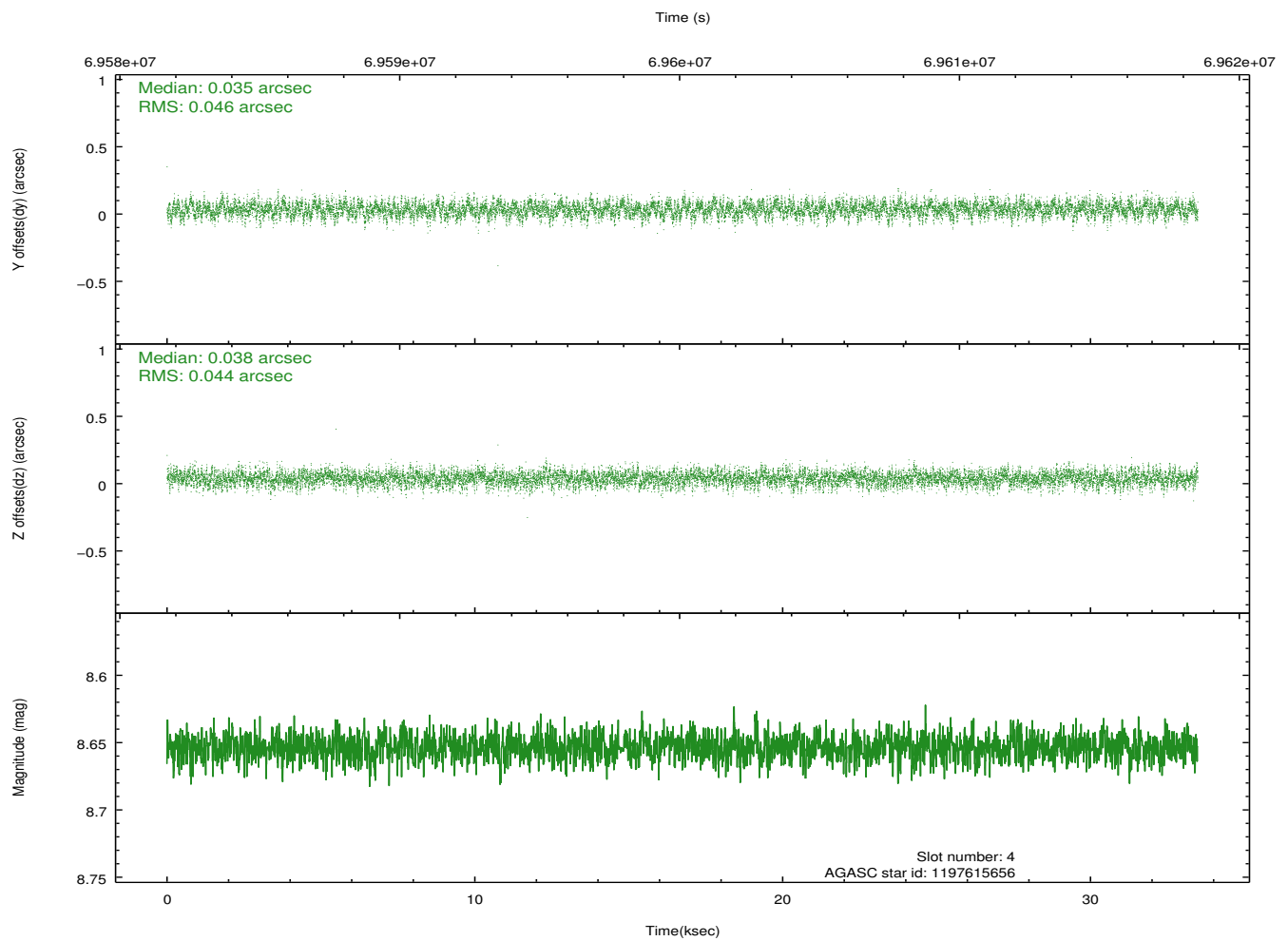
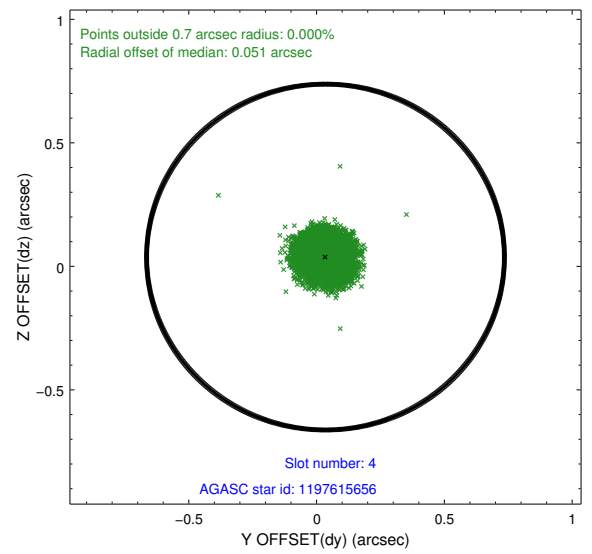
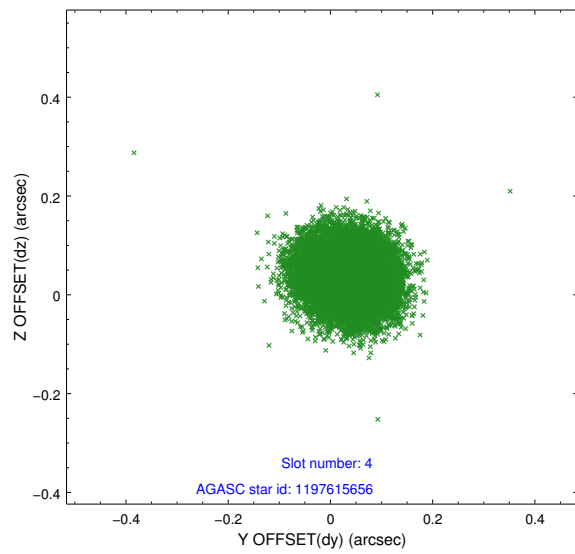
slot	status	id	mag	n_pts	med_dy	med_dz	dr1	dr2	ra	dec	mean_y	mean_z
0	FID	ACIS-I-2	7.15	8164	-0.028	-0.046	0.010	0.018	0.000000	0.000000	-755.20	-835.21
1	FID	ACIS-I-4	7.19	8168	-0.039	0.037	0.006	0.011	0.000000	0.000000	2158.83	1071.02
2	FID	ACIS-I-5	7.23	8168	-0.034	0.078	0.009	0.016	0.000000	0.000000	-1808.97	1068.97
3	GUIDE	1197613816	8.08	16335	-0.088	-0.028	0.057	0.094	5.181461	-71.977993	899.37	-437.25
4	GUIDE	1197615656	8.65	16330	0.035	0.038	0.067	0.109	6.909375	-71.882658	-1060.09	-434.23
5	GUIDE	1197607928	9.62	16321	0.091	0.007	0.090	0.148	7.837743	-72.165759	-1869.04	769.17
6	GUIDE	1197619752	10.02	16264	0.049	0.038	0.131	0.216	4.510721	-71.856694	1571.05	-986.03
7	GUIDE	1197608712	10.07	16313	-0.091	-0.048	0.110	0.180	5.990463	-72.316052	225.26	913.11

2.4 Star Slots

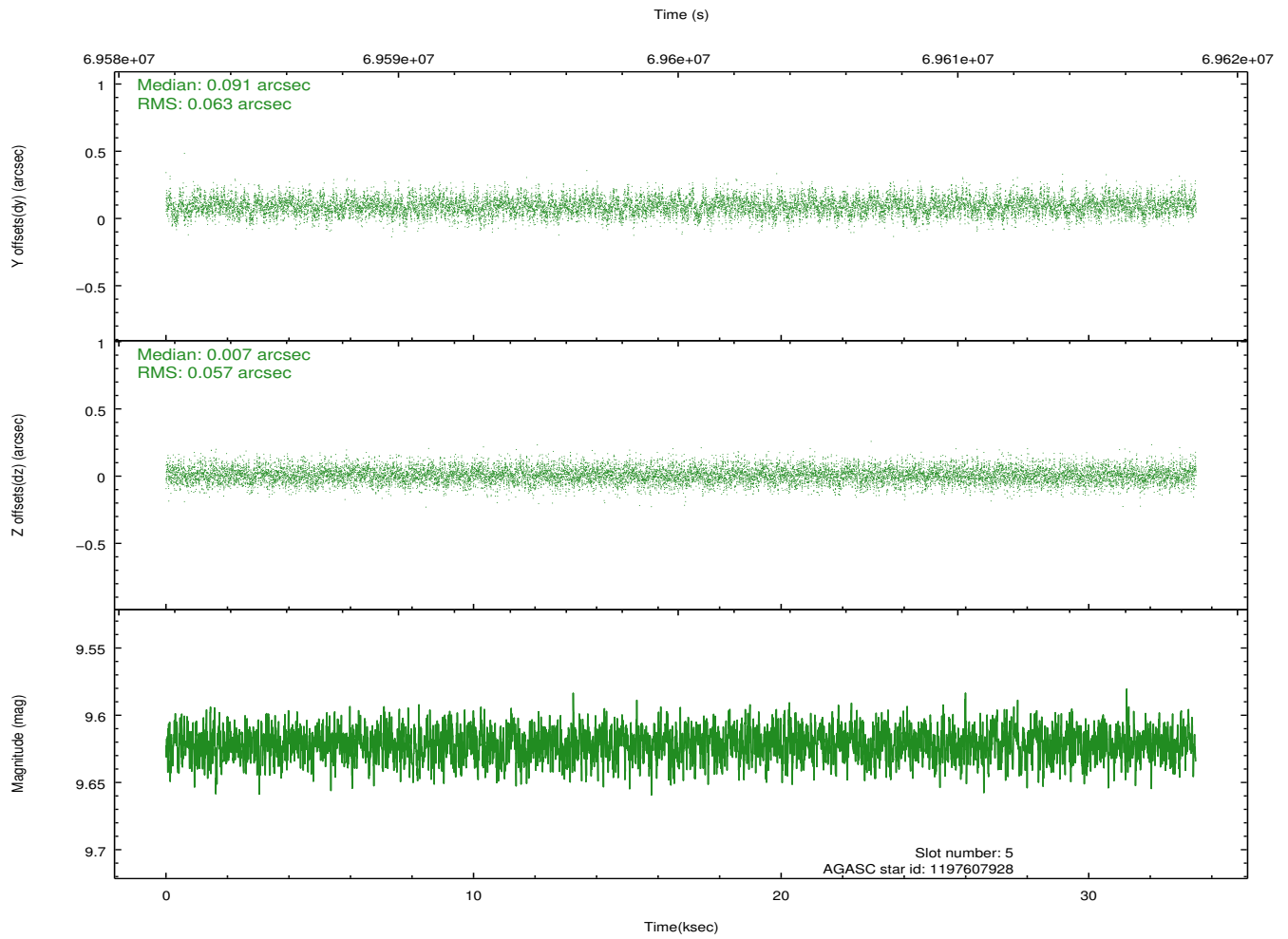
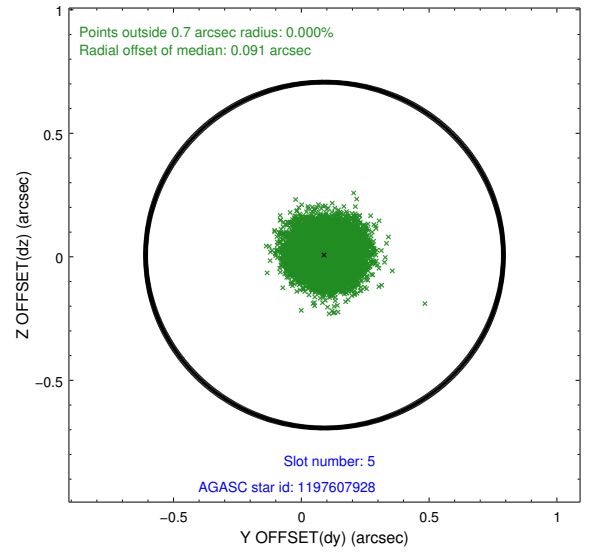
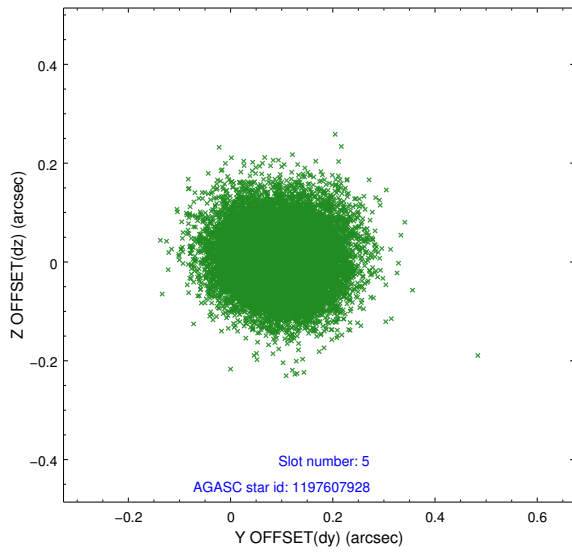
2.4.1 Slot 3



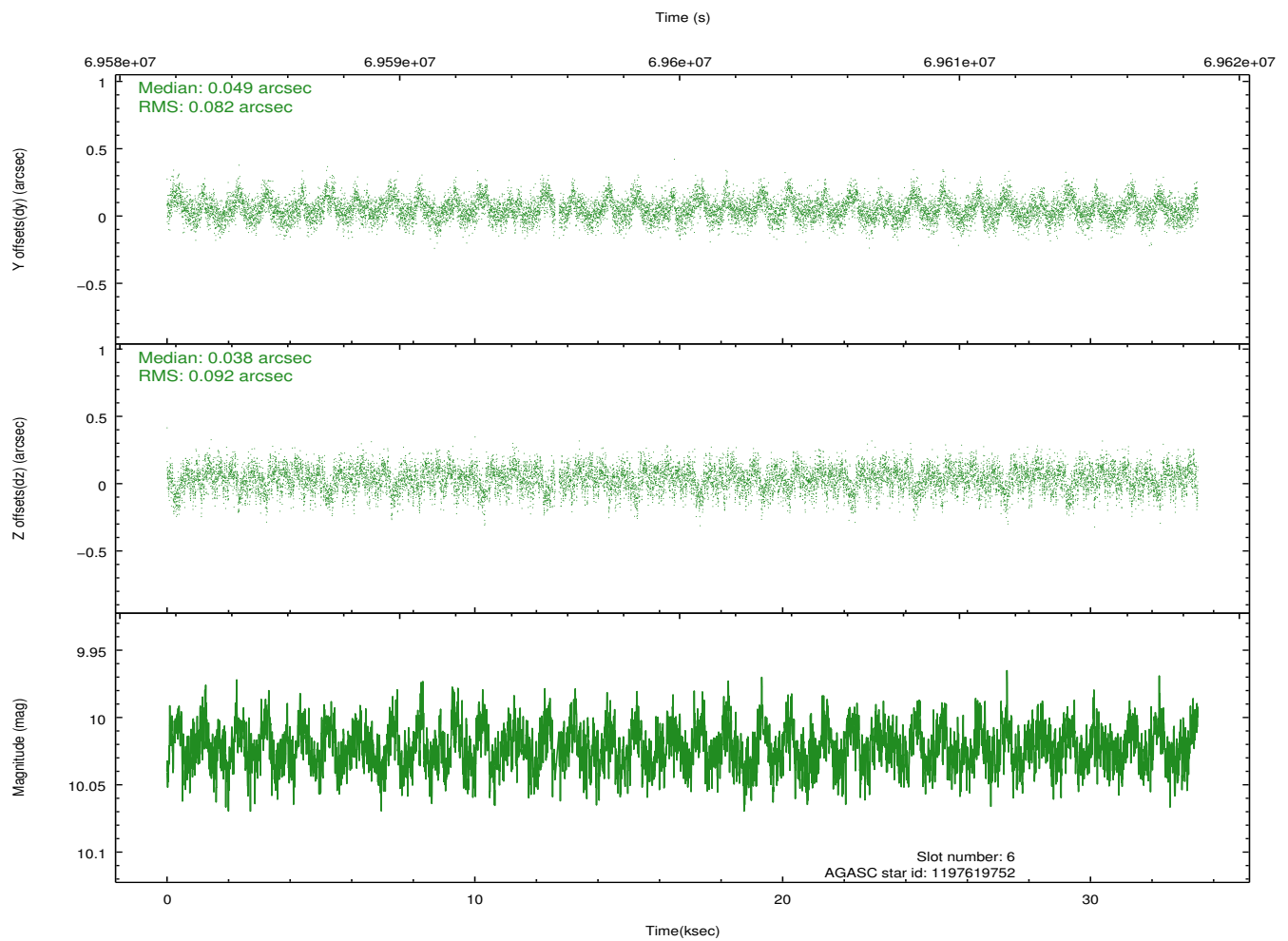
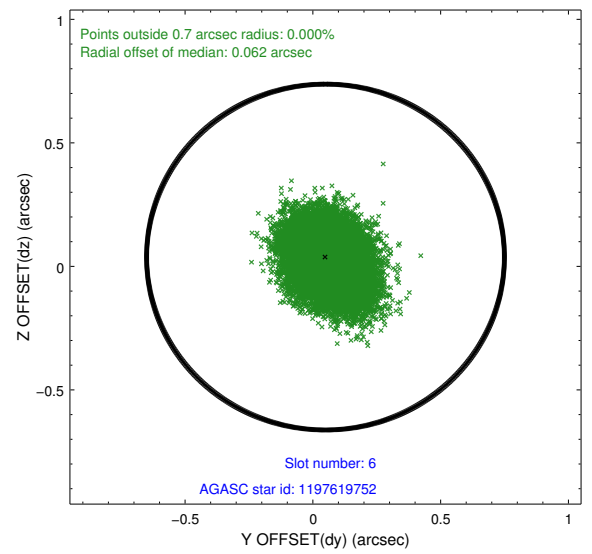
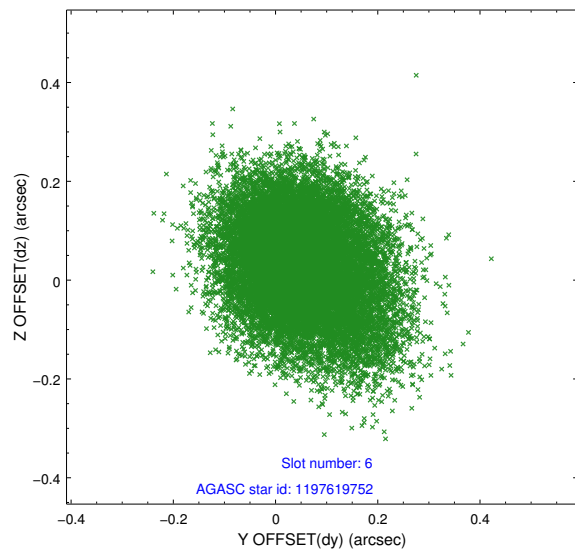
2.4.2 Slot 4



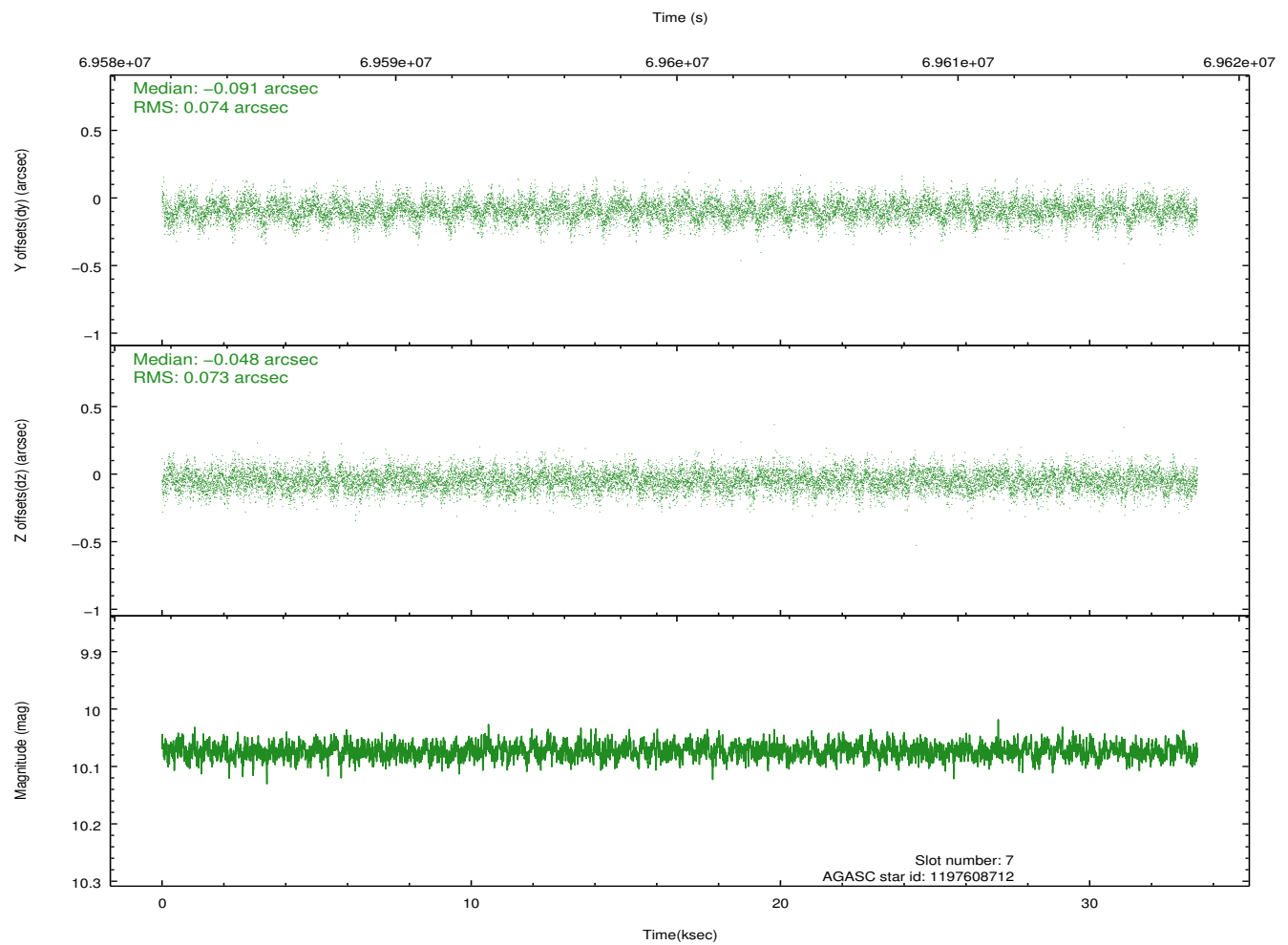
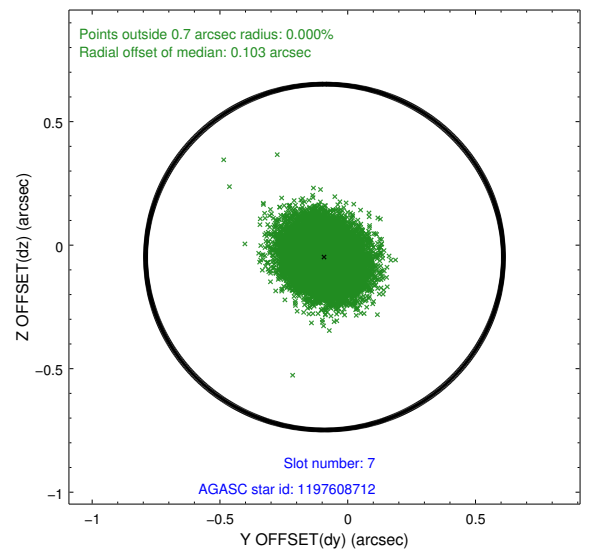
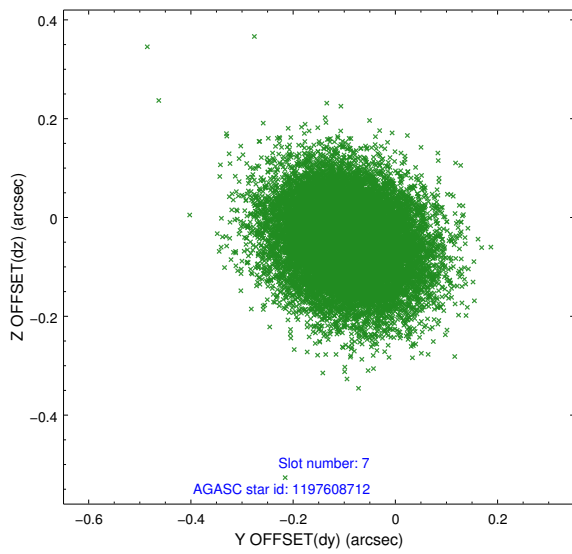
2.4.3 Slot 5



2.4.4 Slot 6

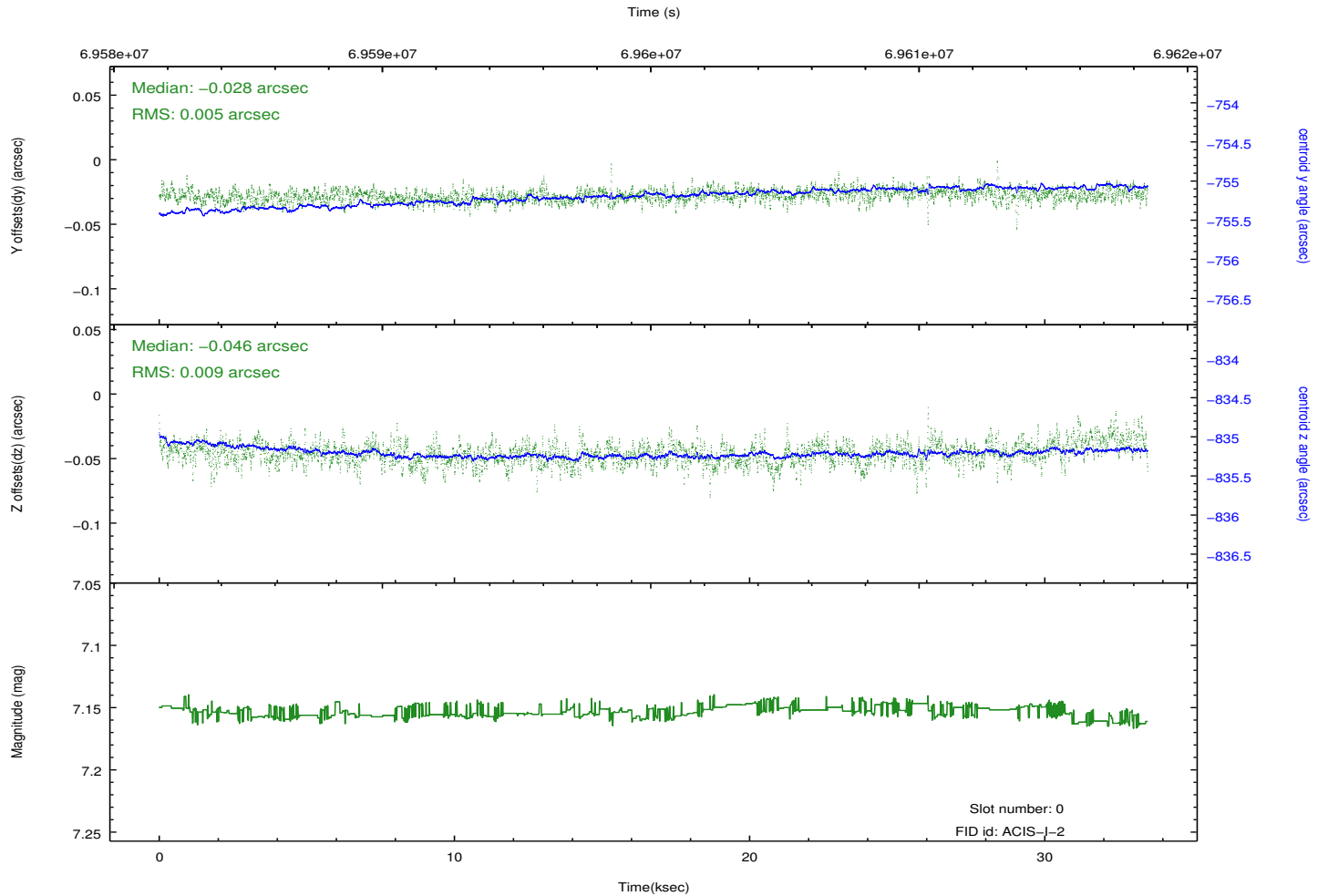
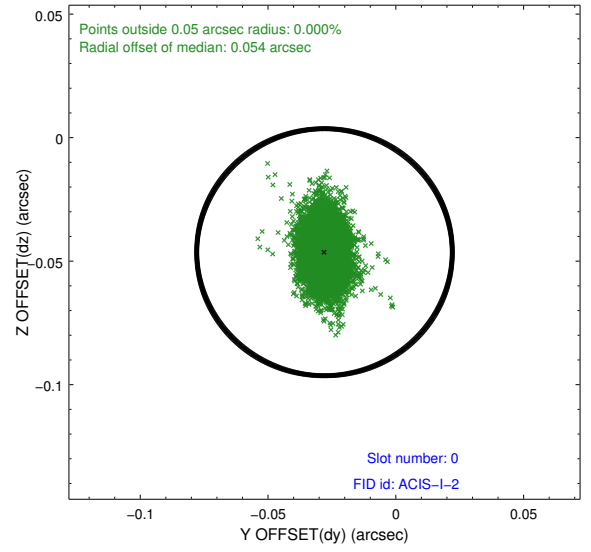
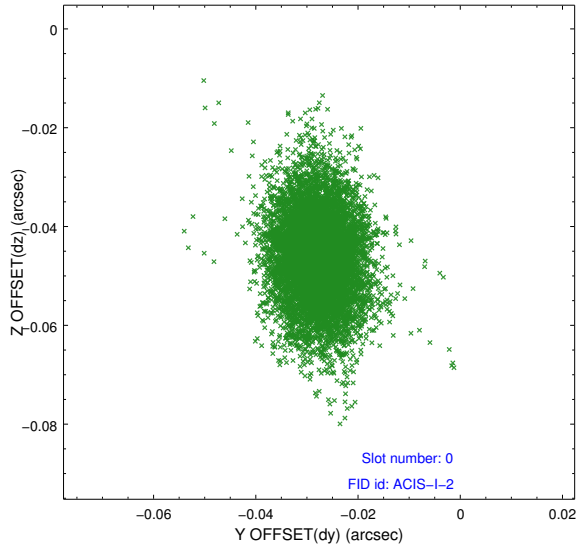


2.4.5 Slot 7

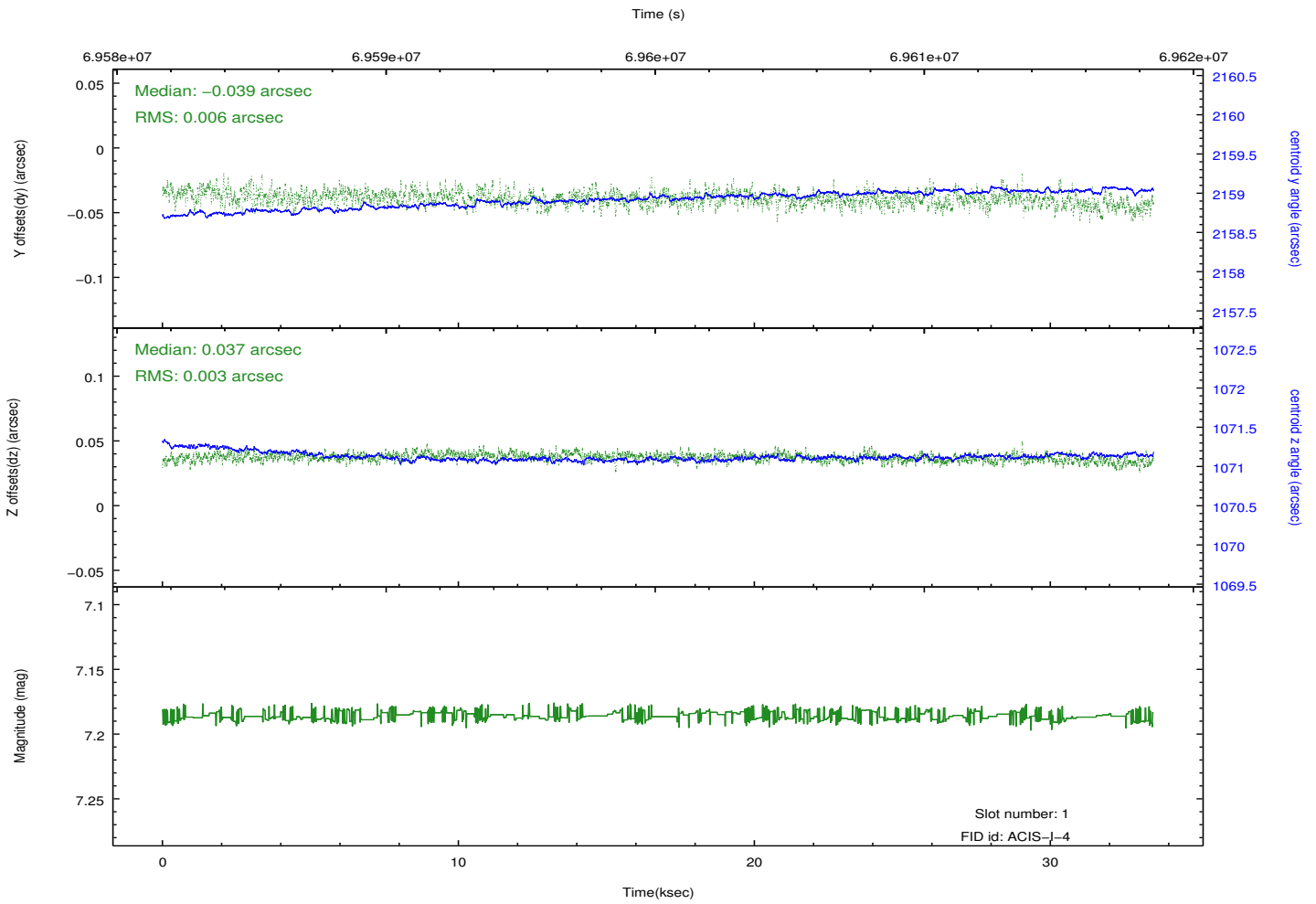
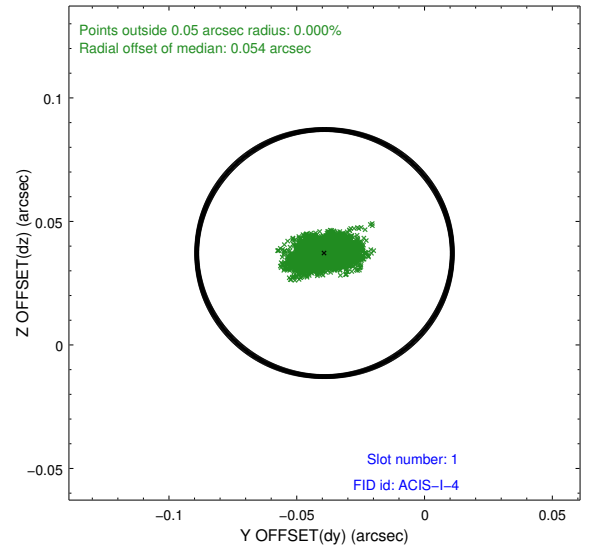
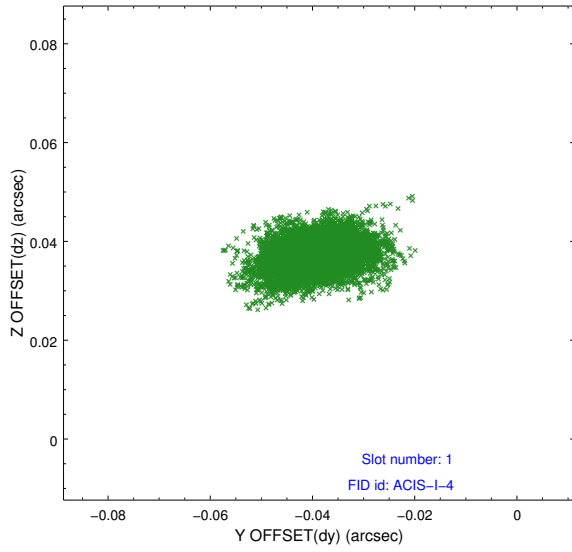


2.5 FID Slots

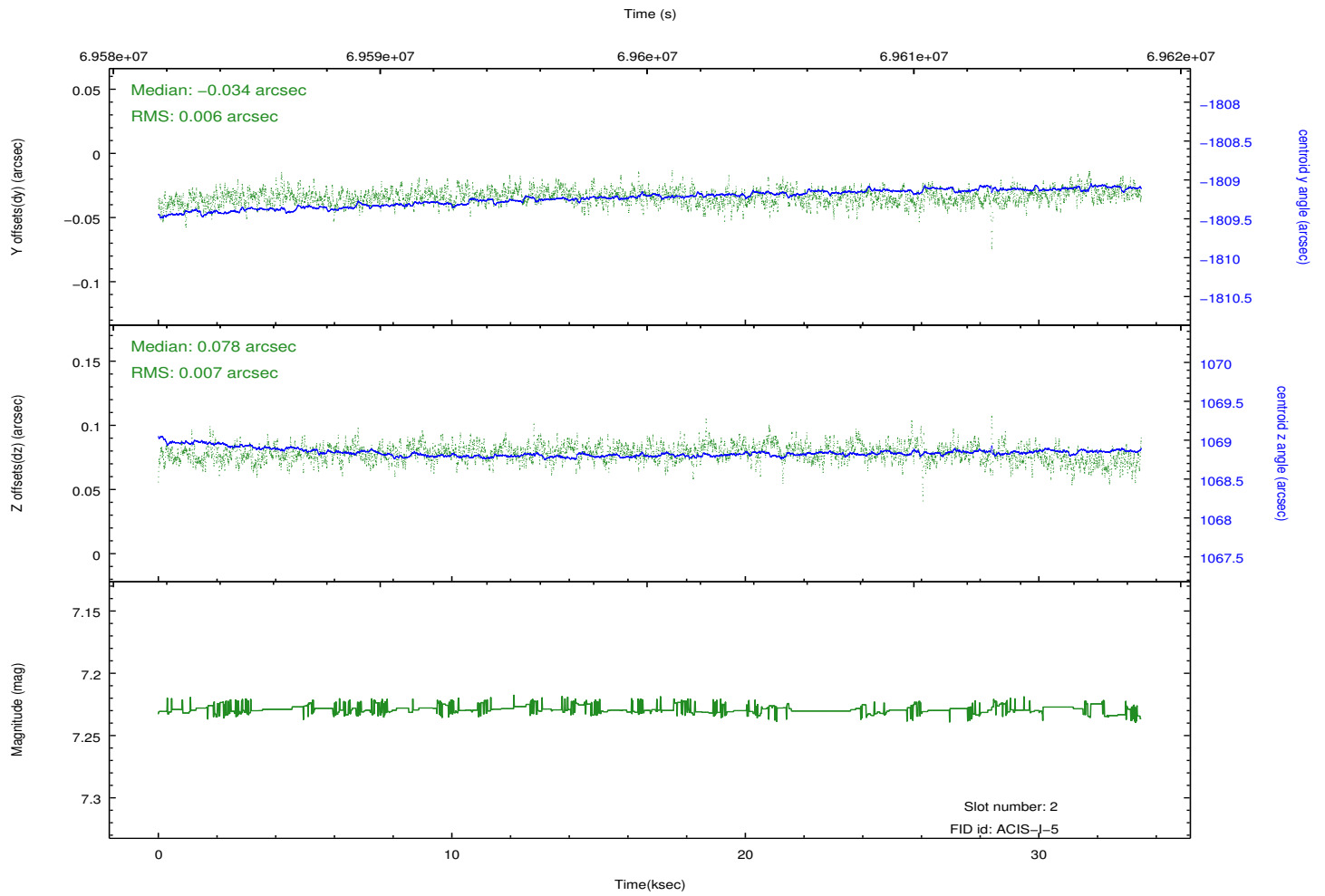
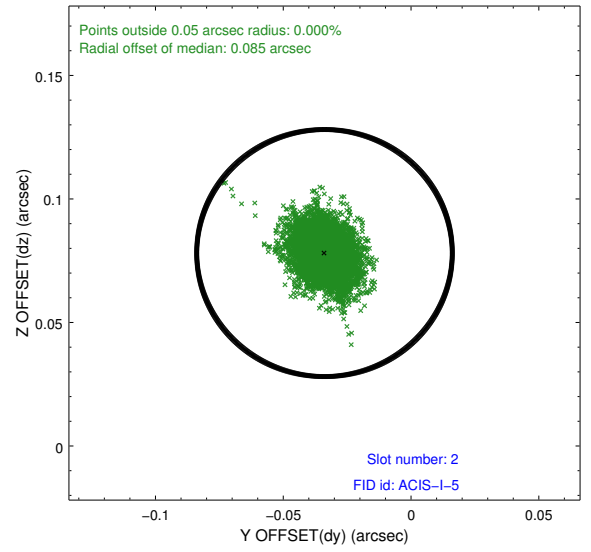
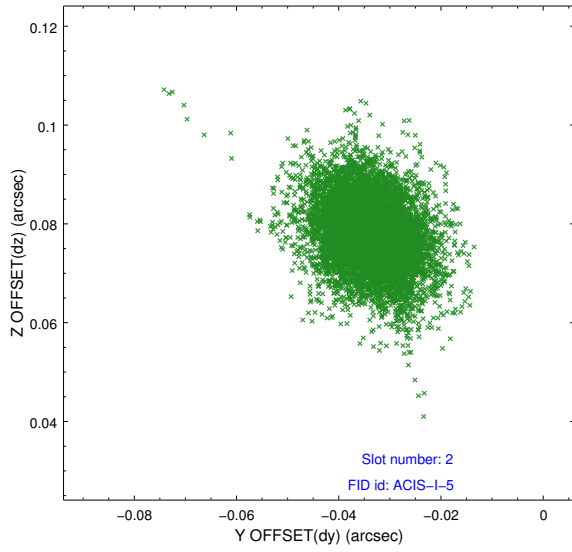
2.5.1 Slot 0



2.5.2 Slot 1



2.5.3 Slot 2



A Summary

A.1 Status

V&V Scientist	Jen Lauer
V&V Date (YYYY-MM-DD)	2012.08.27
V&V Edition	1
V&V Disposition and Status	OK
V&V Charge Time	32.083

A.2 Comments

Roll constraint met.