

V&V Reference Report

L2 ASCDS Version : 8.4.4

Observation 9543 - L2 Version 2
Chandra X-Ray Center

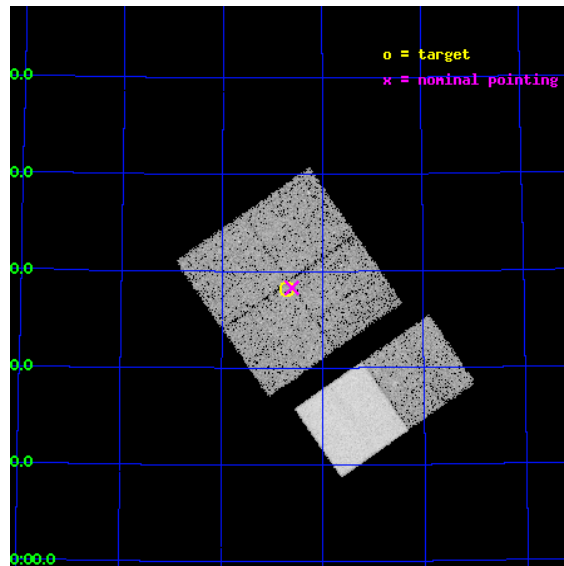
L2 Processing Date : May 10 2012

Contents

1	Front	2
2	OBI	3
2.1	OBI	3
2.1.1	Images	3
2.1.2	Bias	3
2.1.3	Parameters	4
2.1.4	Events	4
2.2	Compared Parameters	5
2.3	Aspect	6
2.4	Star Slots	9
2.4.1	Slot 3	9
2.4.2	Slot 4	10
2.4.3	Slot 5	11
2.4.4	Slot 6	12
2.4.5	Slot 7	13
2.5	FID Slots	14
2.5.1	Slot 0	14
2.5.2	Slot 1	15
2.5.3	Slot 2	16
A	Summary	17
A.1	Status	17
A.2	Comments	17

1 Front

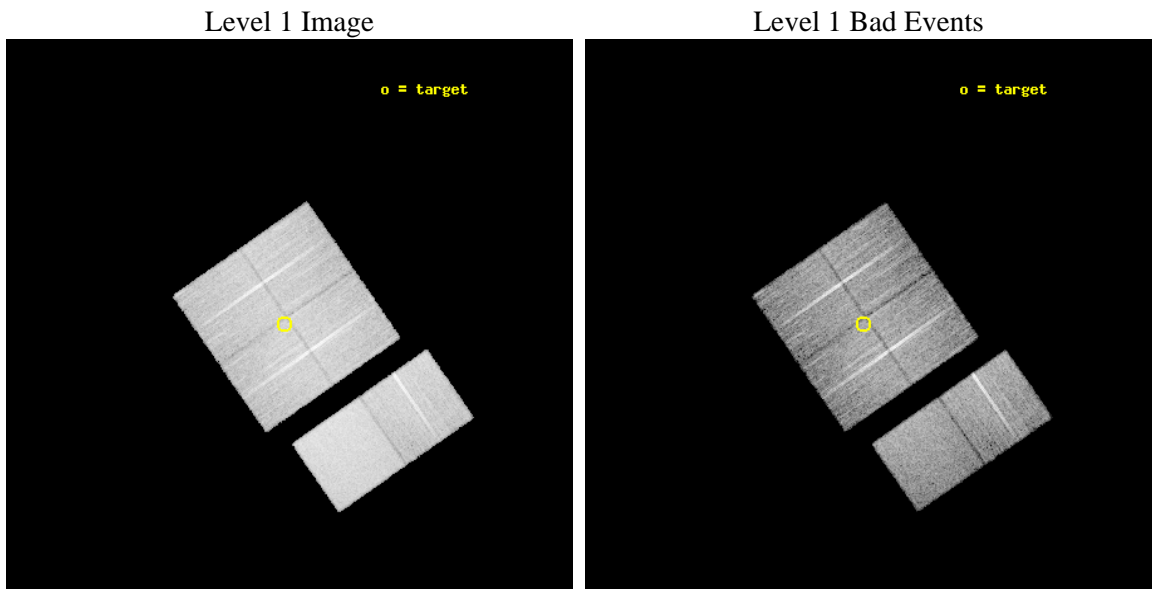
seq_num	600684	Sequence number
obs_id	9543	Observation id
title	Galaxies across the Octaves: A Chandra Legacy Survey of SINGS Galaxies	Proposal title
observer	Dr Leigh Jenkins	Principal investigator
object	NGC 4236	Source name
dtcycle	0	
cycle	P	events from which exps? Prim/Second/Both
ra_targ	184.174167	Observer's specified target RA [deg]
dec_targ	69.469361	Observer's specified target Dec [deg]
ra_nom	184.1522752096	Nominal RA [deg]
dec_nom	69.471767233166	Nominal Dec [deg]
roll_nom	145.21700192532	Nominal Roll [deg]
revision	2	Processing version of data
ontime	11155.199958503	Sum of GTIs [s]
livetime	11013.946099774	Livetime [s]
ontime0	11151.958958209	Sum of GTIs [s]
ontime1	11155.199958503	Sum of GTIs [s]
ontime2	11155.199958503	Sum of GTIs [s]
ontime3	11155.199958503	Sum of GTIs [s]
ontime6	11155.199958503	Sum of GTIs [s]
ontime7	11155.199958503	Sum of GTIs [s]
l2events	115428	Number of level 2 events



2 OBI

2.1 OBI

2.1.1 Images



2.1.2 Bias



2.1.3 Parameters

obi_num	1	Obi number	sched_exp_time	11200.000000	[s] Scheduled observation exposure time
ascdsver	8.4.4	Processing system revision	ontime	11155.199958503	Sum of GTIs [s]
caldbver	4.4.9	 	ontime0	11151.958958209	Sum of GTIs [s]
date	2012-05-10T08:14:38	Date and time of file creation	ontime1	11155.199958503	Sum of GTIs [s]
revision	2	Processing version of data	ontime2	11155.199958503	Sum of GTIs [s]
			ontime3	11155.199958503	Sum of GTIs [s]
			ontime6	11155.199958503	Sum of GTIs [s]
			ontime7	11155.199958503	Sum of GTIs [s]
			l1events	669713	Number of level 1 events

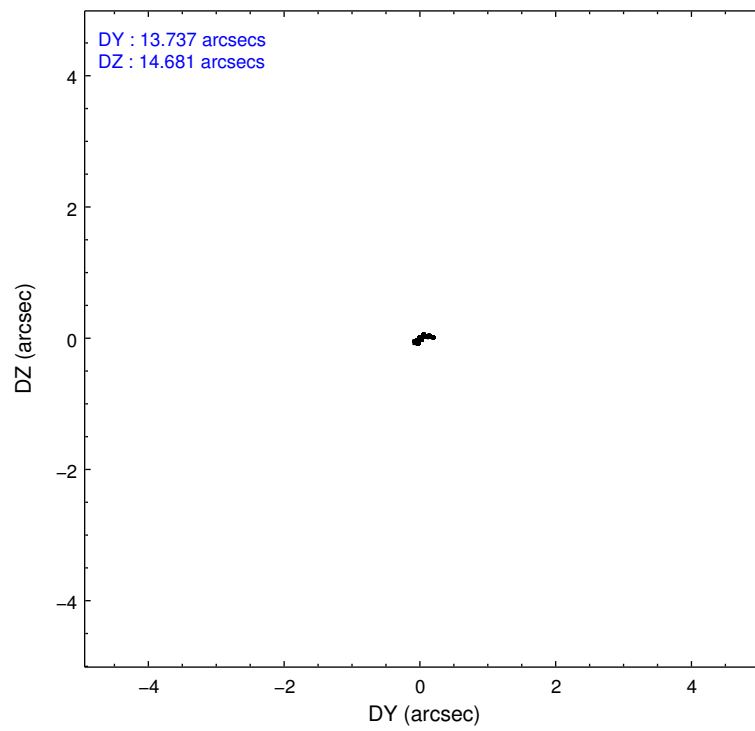
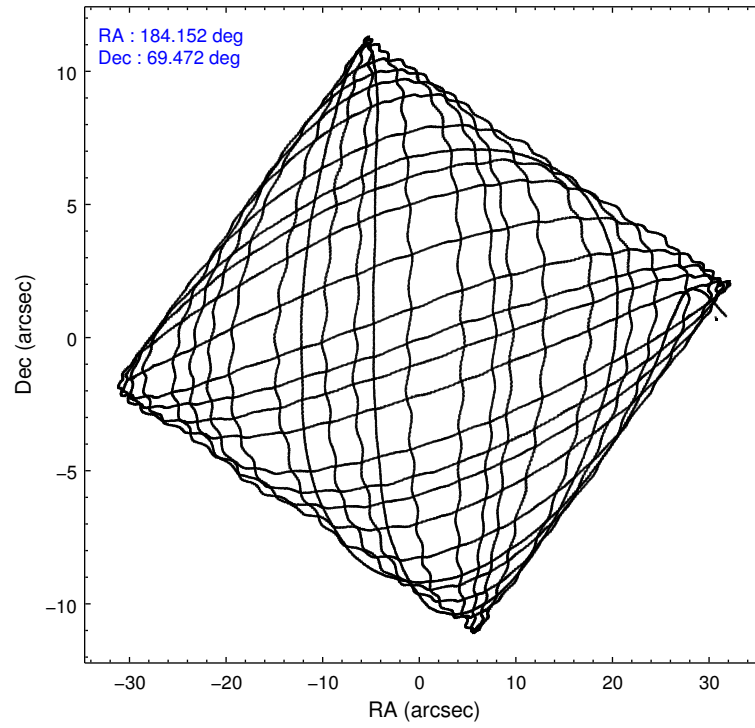
2.1.4 Events

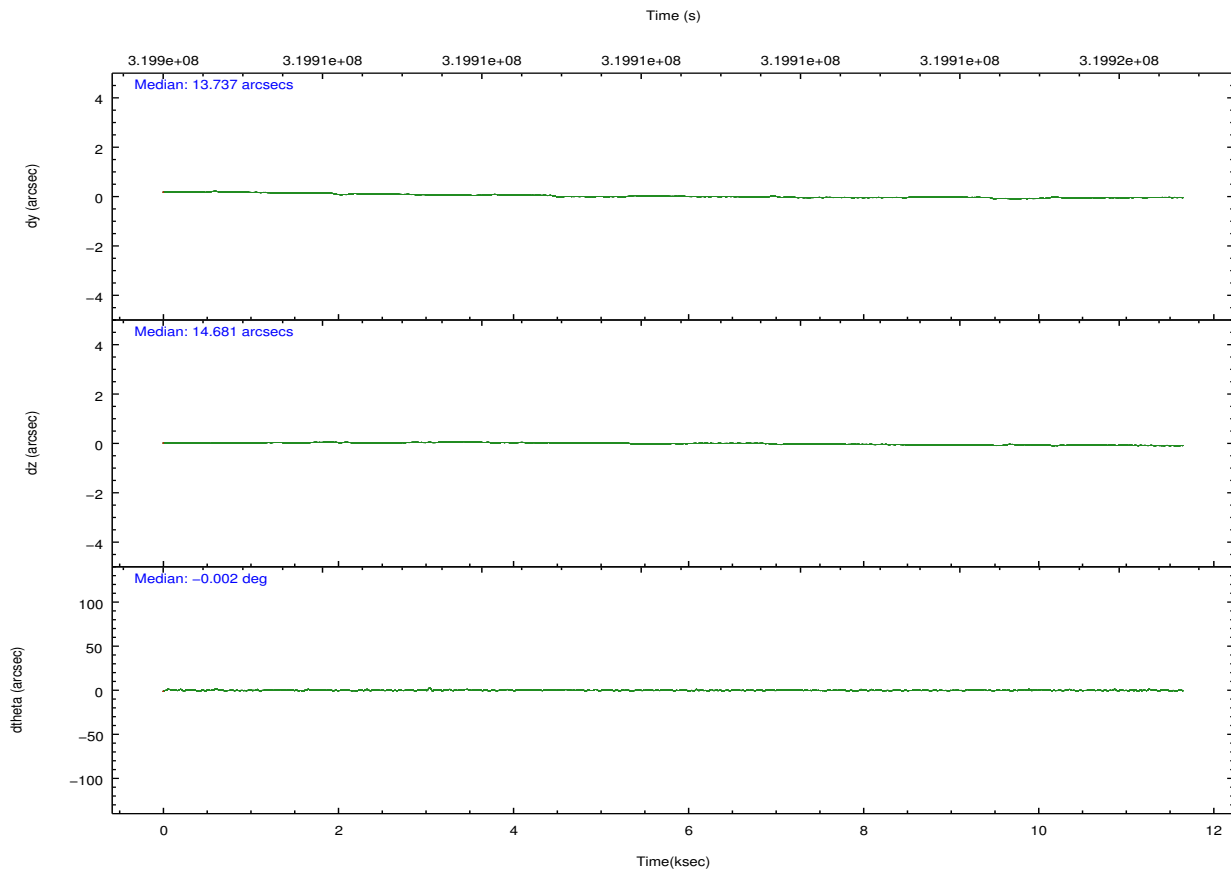
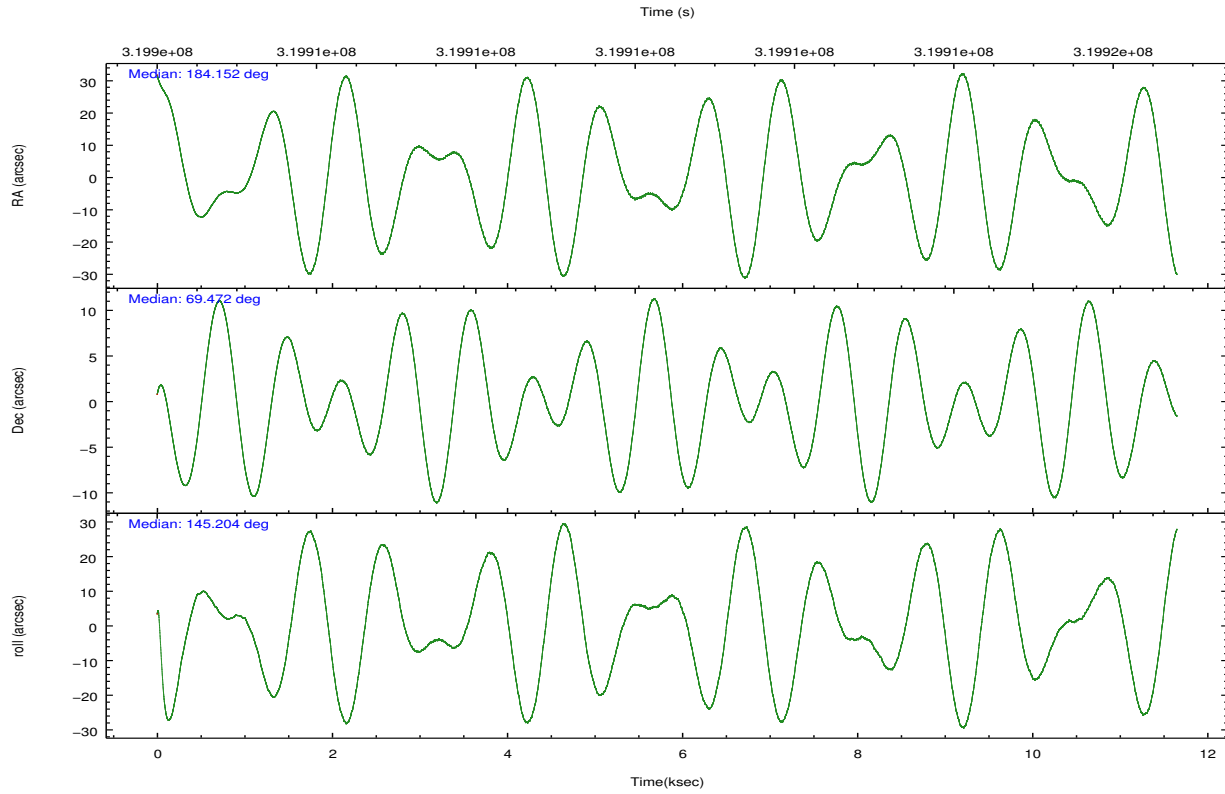
	ccd 0	ccd 1	ccd 2	ccd 3	ccd 6	ccd 7		ccd 0	ccd 1	ccd 2	ccd 3	ccd 6	ccd 7
level 1 events	100436	99007	107243	104930	110798	147299	grade 0 events	5700	5127	5198	5488	4995	5084
rejected events	87063	85384	94878	92417	97763	86464		5%	5%	4%	5%	4%	3%
rejected %	86%	86%	88%	88%	88%	58%	grade 1 events	56	64	70	75	58	164
								0%	0%	0%	0%	0%	0%
							grade 2 events	3005	3269	2723	2516	2955	12380
								2%	3%	2%	2%	2%	8%
							grade 3 events	1248	1277	1178	1120	1230	5093
								1%	1%	1%	1%	1%	3%
							grade 4 events	1118	1223	1119	1157	1194	5000
								1%	1%	1%	1%	1%	3%
							grade 5 events	4309	4617	4221	5111	5014	13826
								4%	4%	3%	4%	4%	9%
							grade 6 events	2303	2728	2151	2232	2666	33300
								2%	2%	2%	2%	2%	22%
							grade 7 events	82697	80702	90583	87231	92686	72452
								82%	81%	84%	83%	83%	49%

2.2 Compared Parameters

Parameter	Planned	Actual	Parameter	Planned	Actual
Instrument	ACIS	ACIS	Obspar format version number	7	7
Detector	ACIS-012367	ACIS-012367	Obspar file type	PREDICTED	ACTUAL
Grating	NONE	NONE	Obspar update status	NONE	UPDATED
Data mode	FAINT	FAINT	CCD I0 on	Y	Y
Observation mode	POINTING	POINTING	CCD I1 on	Y	Y
[deg] Pointing RA	184.230365	184.1522752095981	CCD I2 on	Y	Y
[deg] Pointing Dec	69.469576	69.47176723316588	CCD I3 on	Y	Y
[deg] Pointing Roll	144.935138	145.217001925321	CCD S0 on	N	N
[mm] SIM focus pos	-0.782348	-0.7809083437167272	CCD S1 on	N	N
[mm] SIM defocus	0	0.001439871863259334	CCD S2 on	O2	Y
[mm] SIM translation stage pos	-233.592463	-233.5874344608287	CCD S3 on	O1	Y
[mm] SIM translation stage offset	0	-0.005018542100998502	CCD S4 on	N	N
[s] Observation start time (MET)	319905024.184000	319903931.78984	CCD S5 on	N	N
Observation start date	2008-02-20T14:29:19	2008-02-20T14:12:11	Number of optional ACIS chips dropped	0	0
[s] Observation end time (MET)	319916224.184000	319916769.91546	On-chip summing requested	N	N
Observation end date	2008-02-20T17:35:59	2008-02-20T17:46:09	Subarray requested	NONE	NONE
Read mode	TIMED	TIMED	Alternating exposures requested	N	N
			[s] Primary exposure time	0.000000	3.2

2.3 Aspect



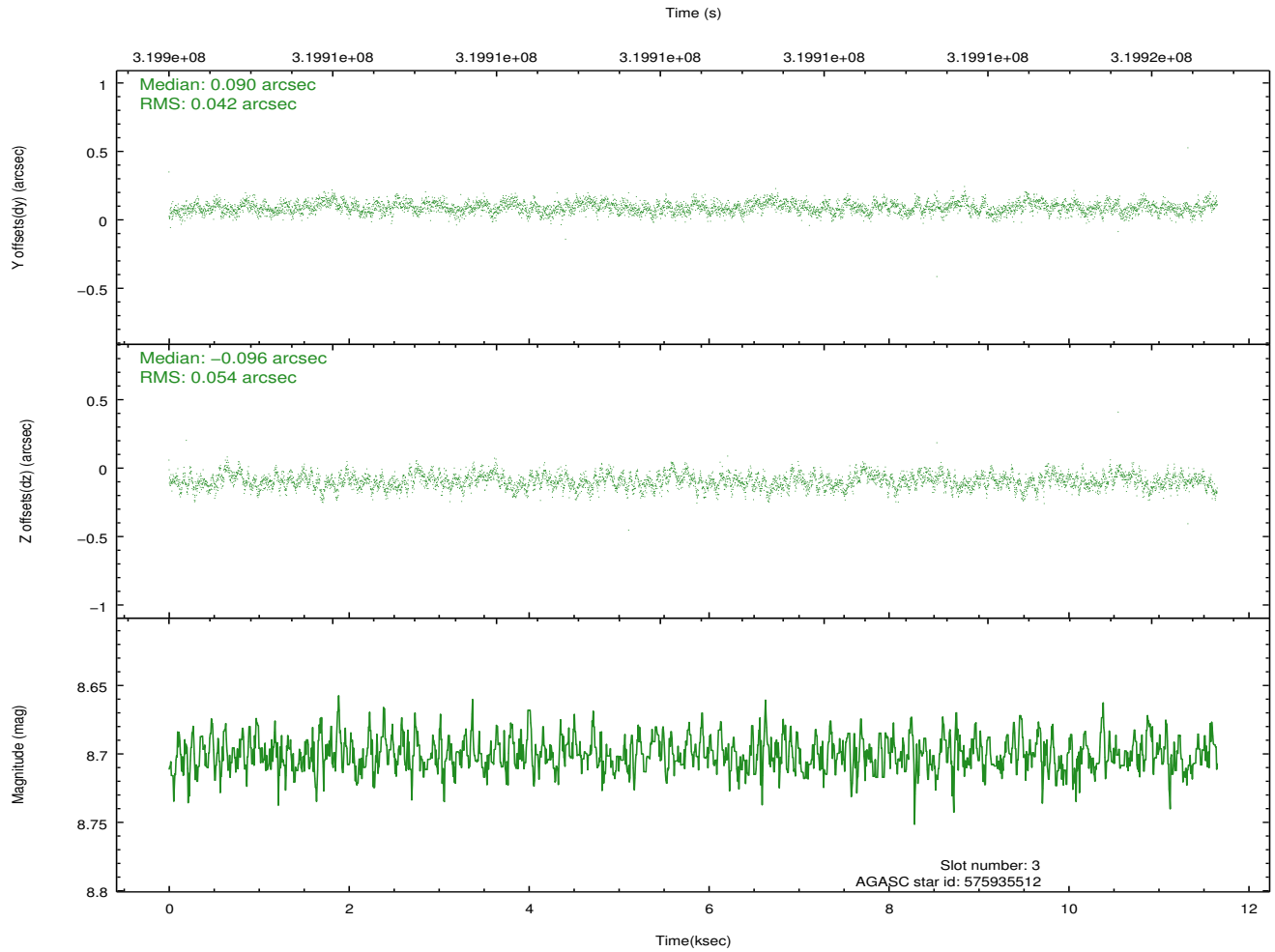
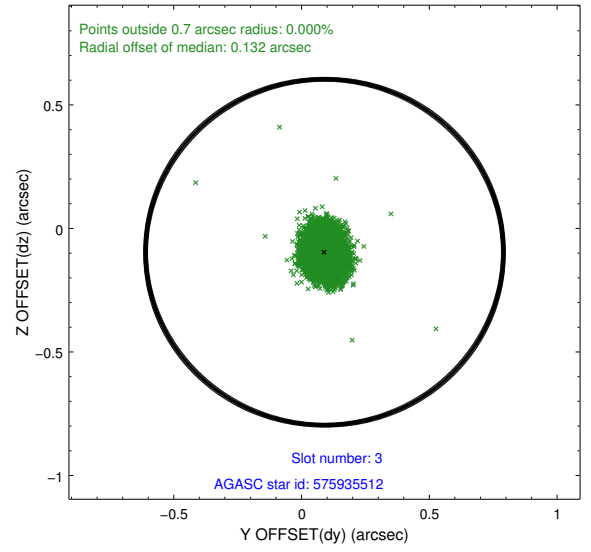
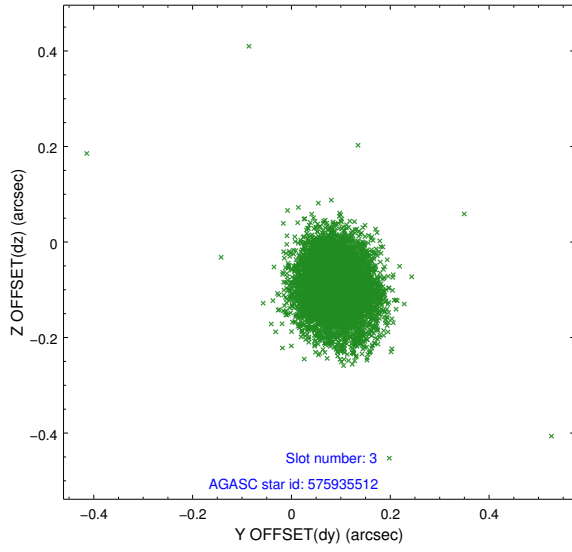


Slot Statistics

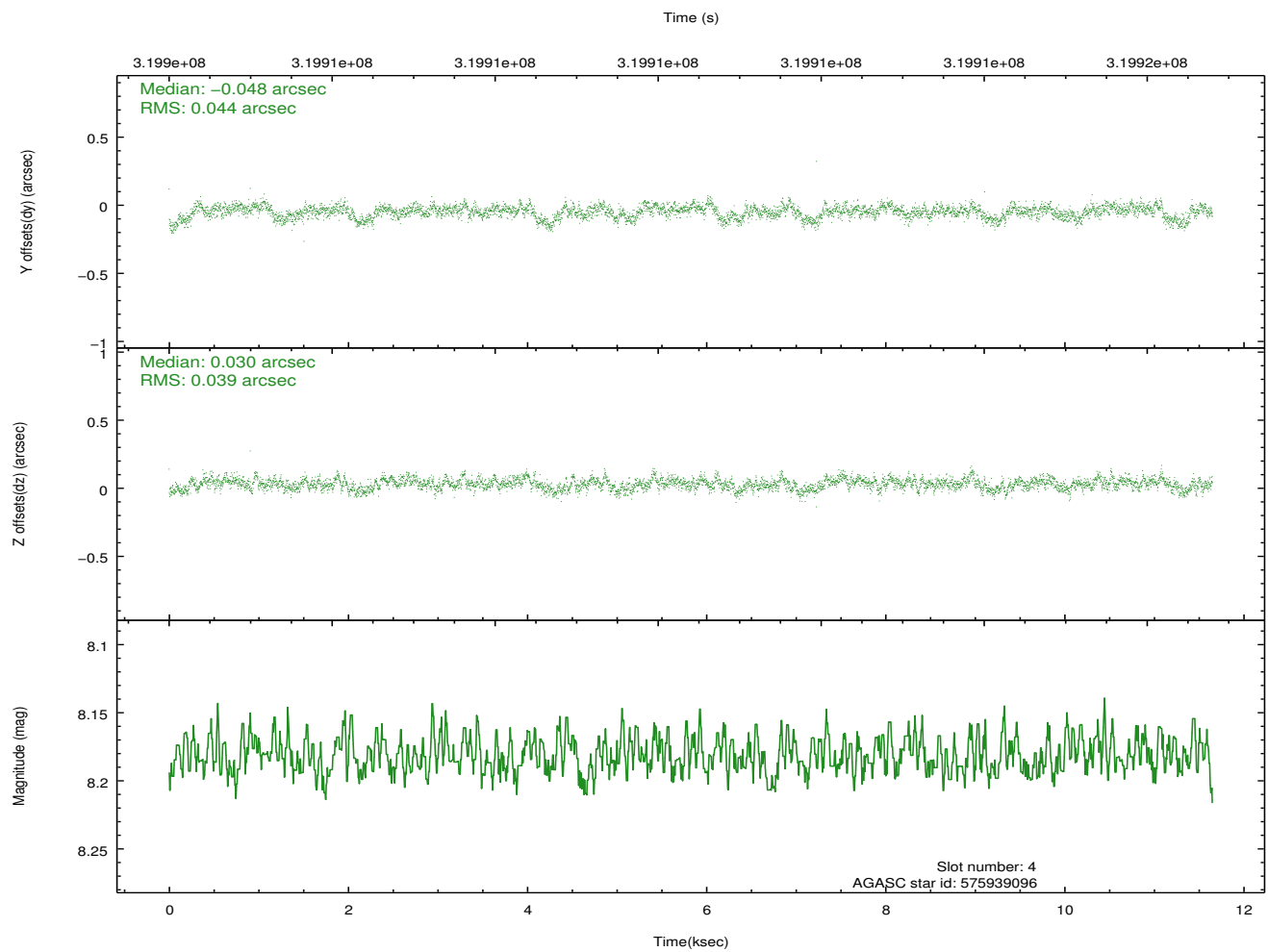
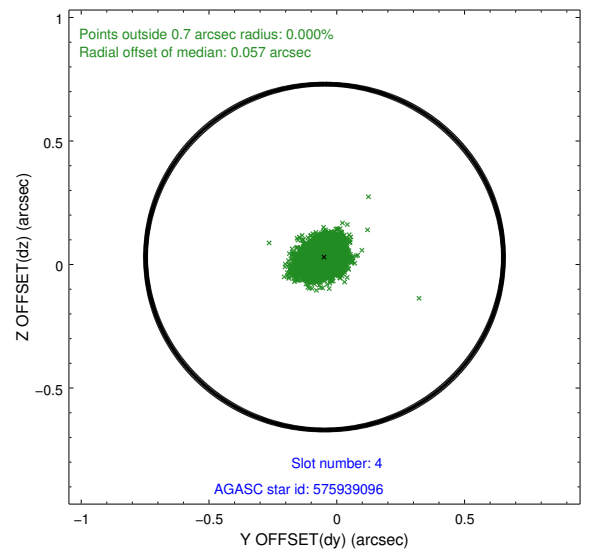
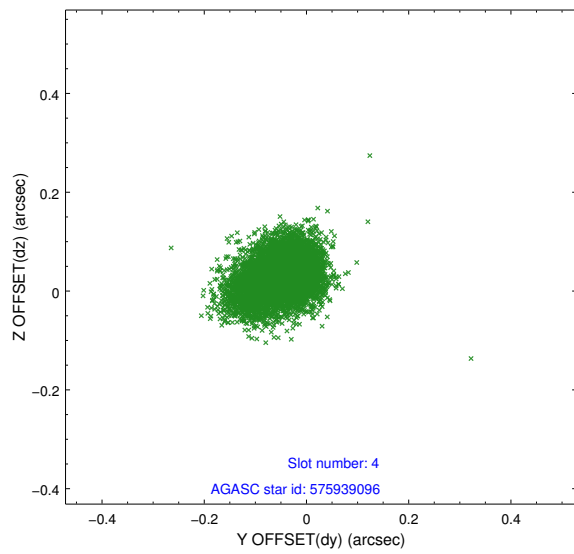
slot	status	id	mag	n_pts	med_dy	med_dz	dr1	dr2	ra	dec	mean_y	mean_z
0	FID	ACIS-I-1	7.23	2841	0.031	-0.006	0.006	0.011	0.000000	0.000000	925.76	-838.26
1	FID	ACIS-I-5	7.22	2842	-0.207	0.037	0.006	0.011	0.000000	0.000000	-1822.35	1059.05
2	FID	ACIS-I-6	7.24	2842	0.085	0.039	0.007	0.012	0.000000	0.000000	390.88	1704.05
3	GUIDE	575935512	8.70	5681	0.090	-0.096	0.071	0.116	185.870185	69.649413	-1291.81	-1731.71
4	GUIDE	575939096	8.18	5684	-0.048	0.030	0.062	0.103	184.351929	69.688755	329.35	-732.93
5	GUIDE	575940512	7.63	5684	-0.177	-0.103	0.059	0.095	184.501010	68.797040	-1678.40	1778.89
6	GUIDE	576334312	9.33	5674	-0.037	0.035	0.109	0.182	184.557439	70.099260	975.19	-2085.58
7	GUIDE	575940776	9.15	5677	0.176	0.128	0.093	0.154	184.684963	68.562055	-2365.38	2328.42

2.4 Star Slots

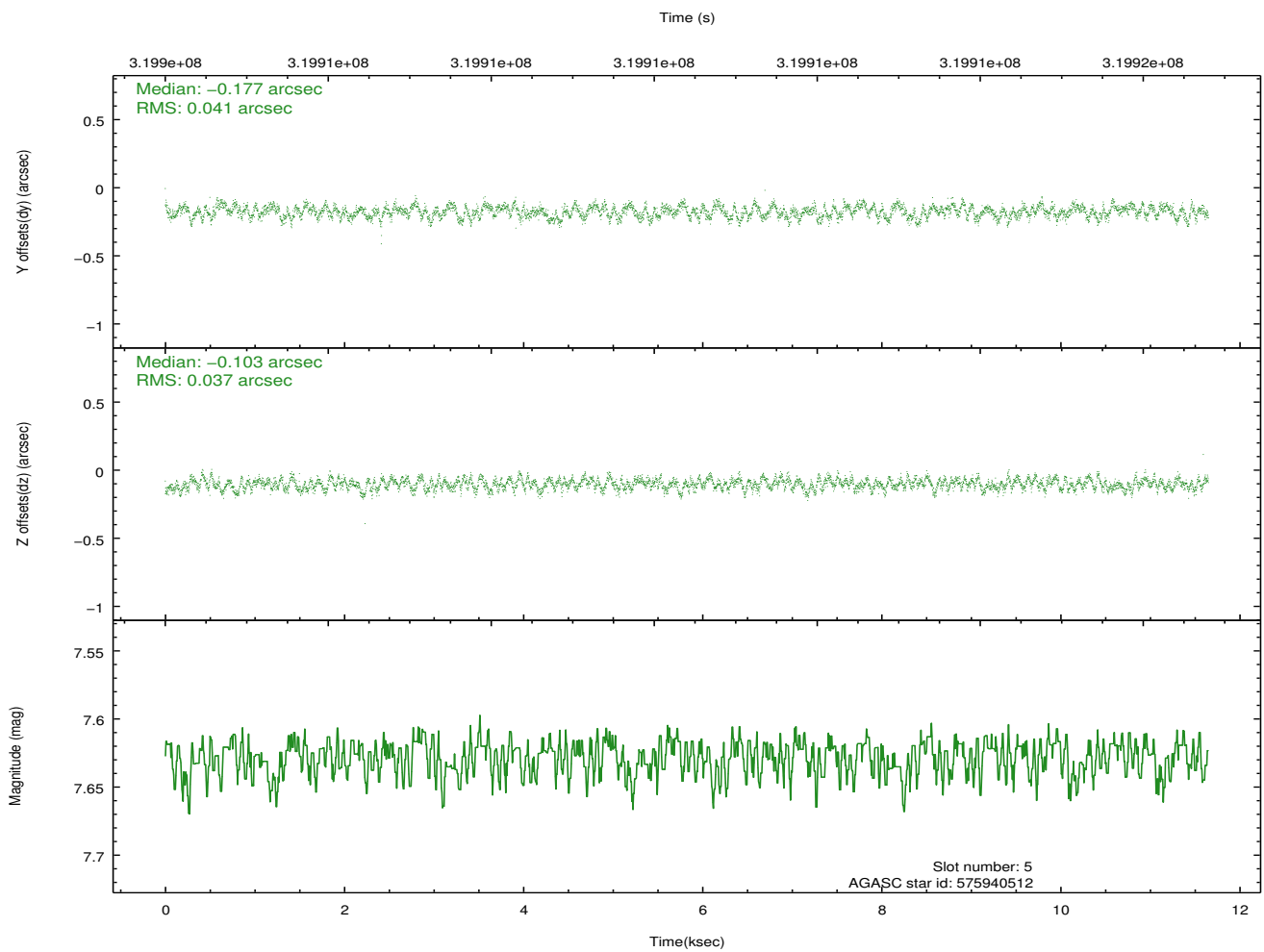
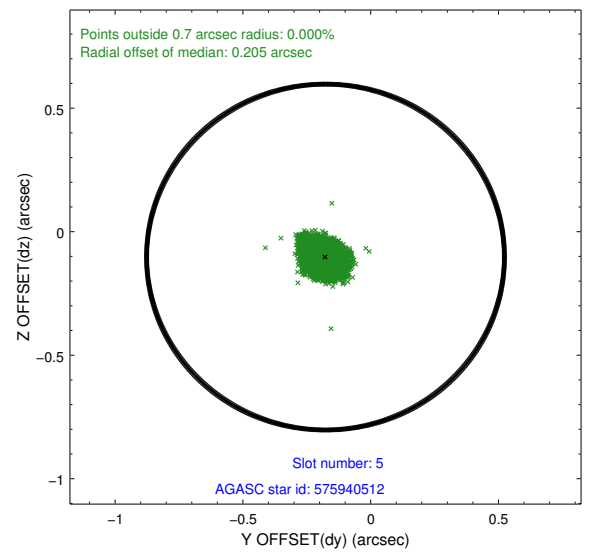
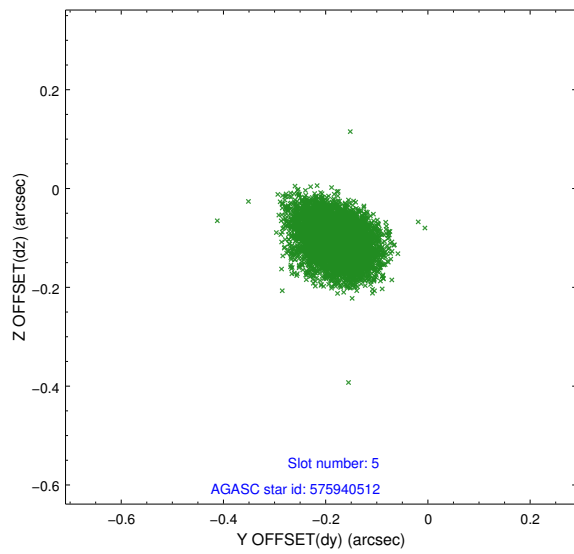
2.4.1 Slot 3



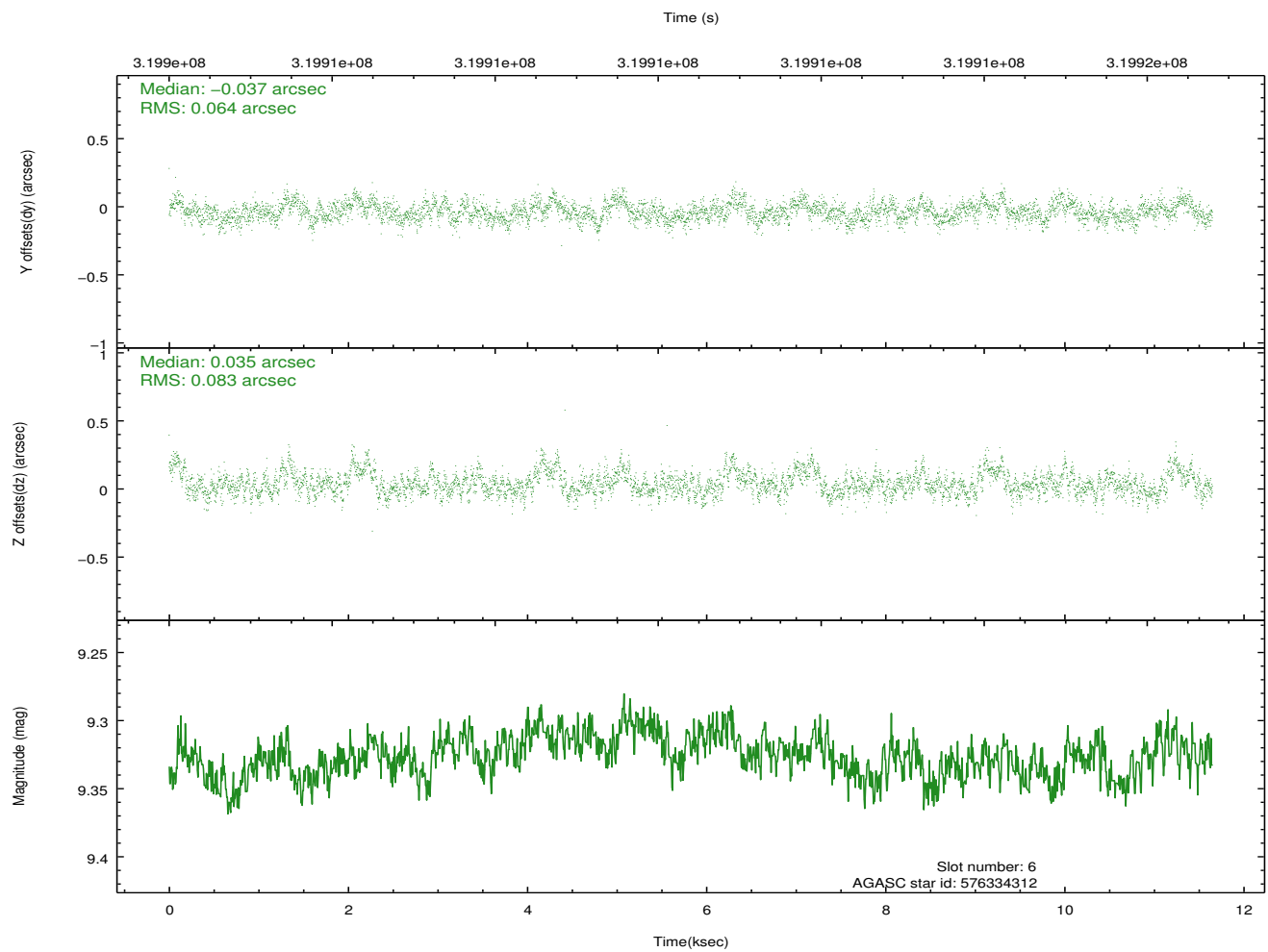
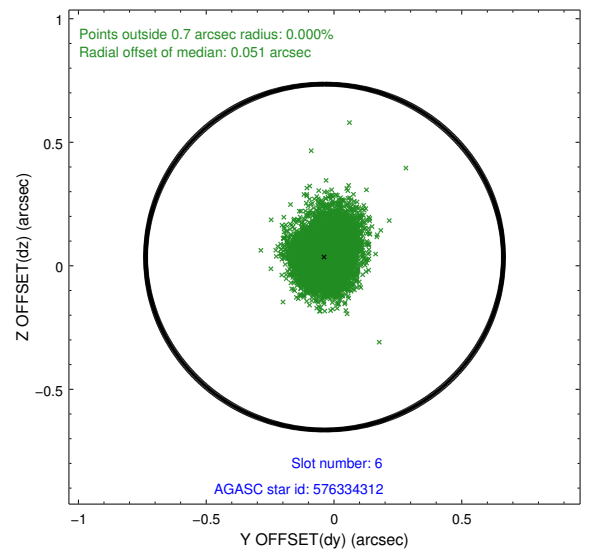
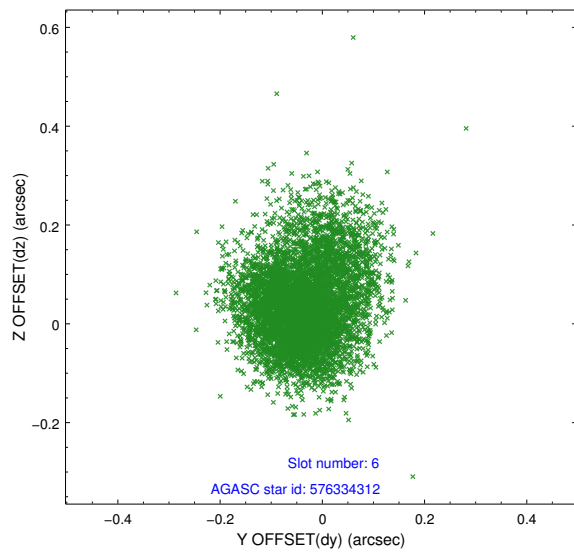
2.4.2 Slot 4



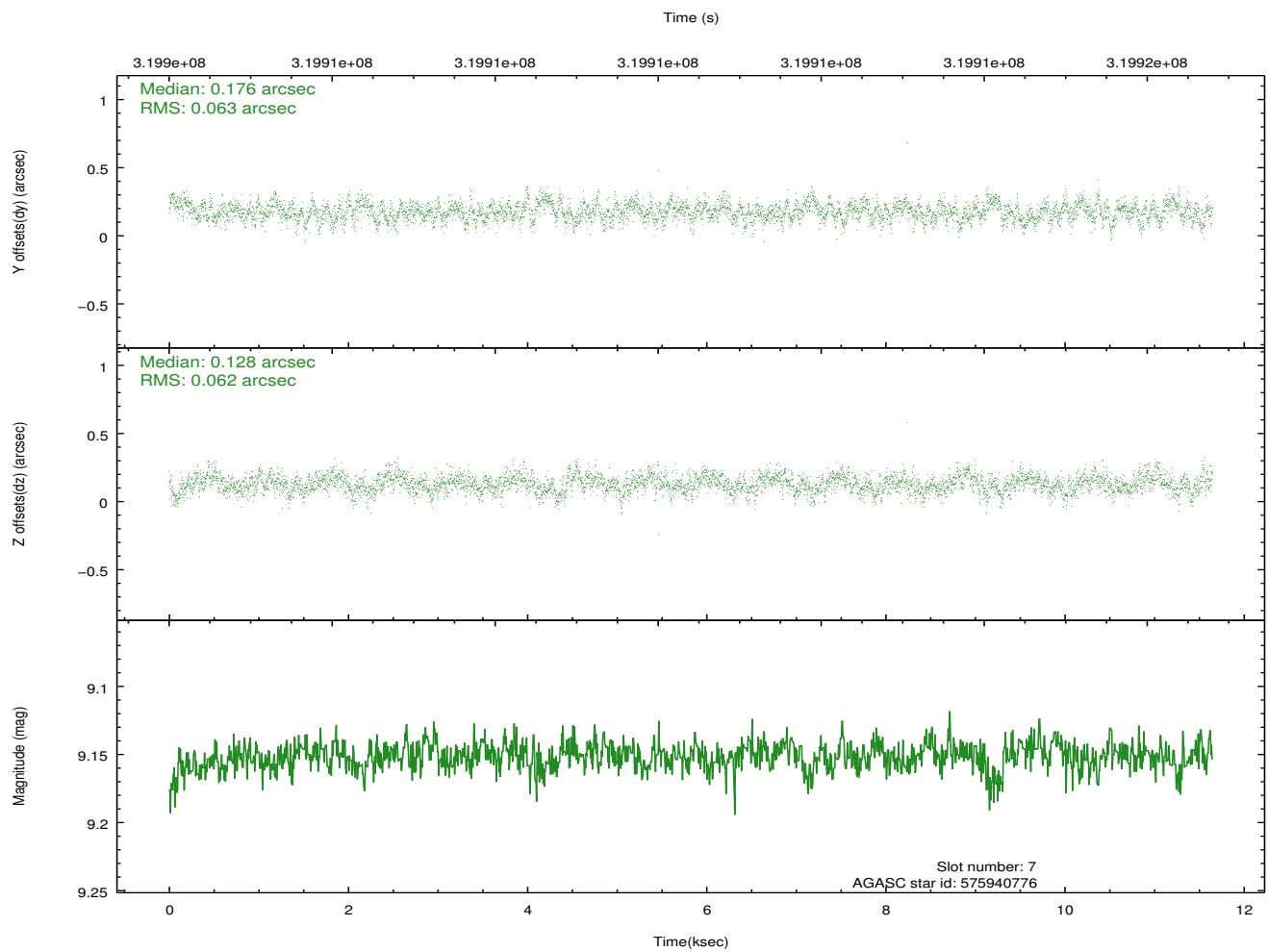
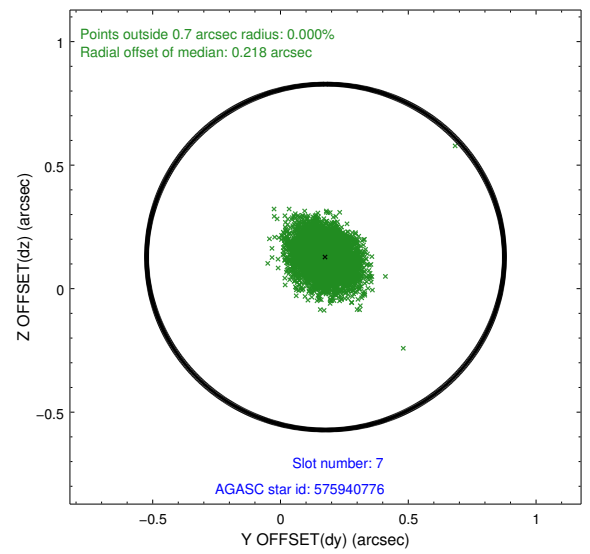
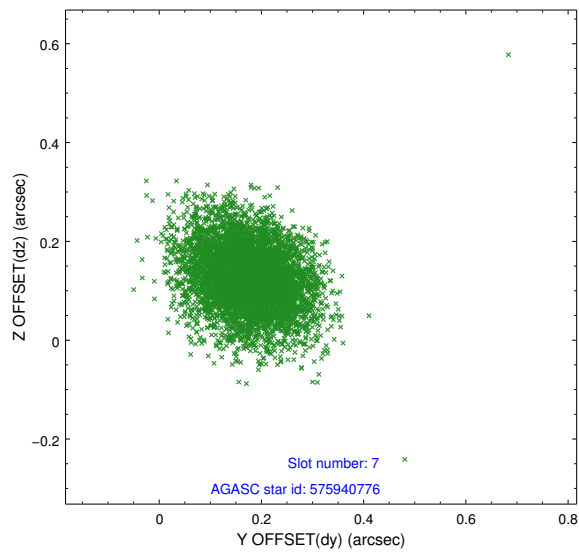
2.4.3 Slot 5



2.4.4 Slot 6

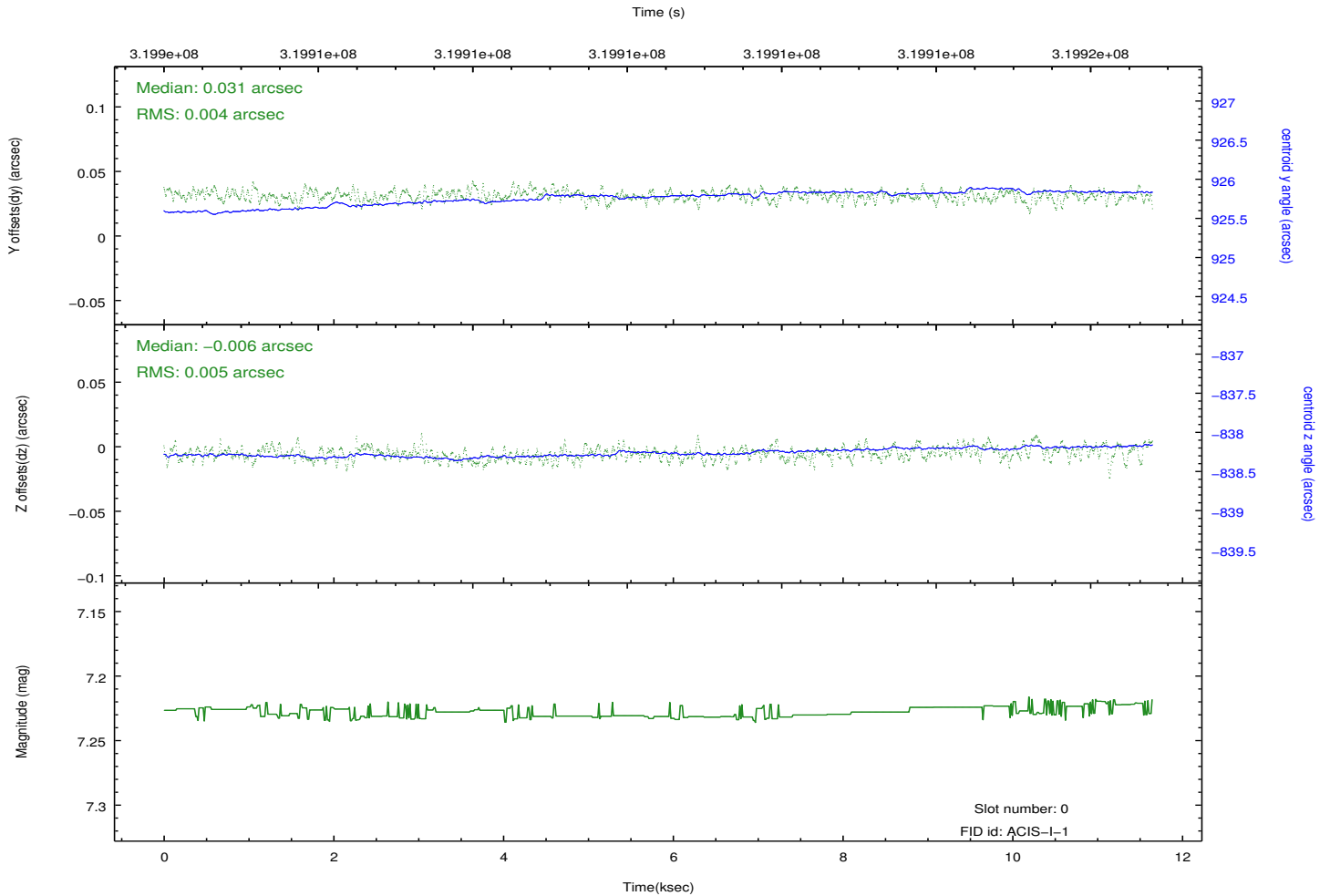
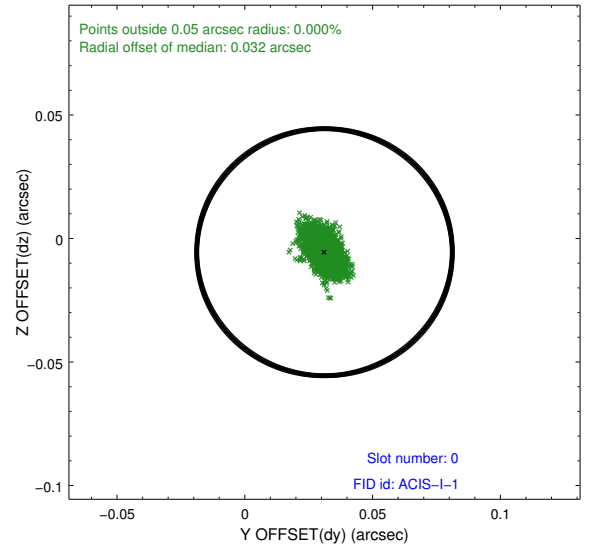
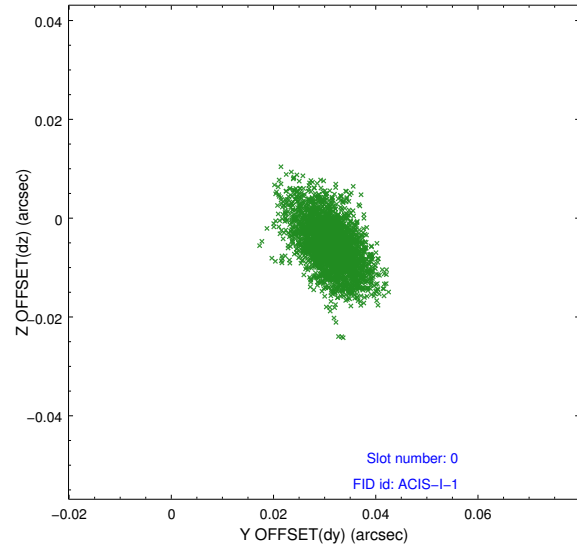


2.4.5 Slot 7

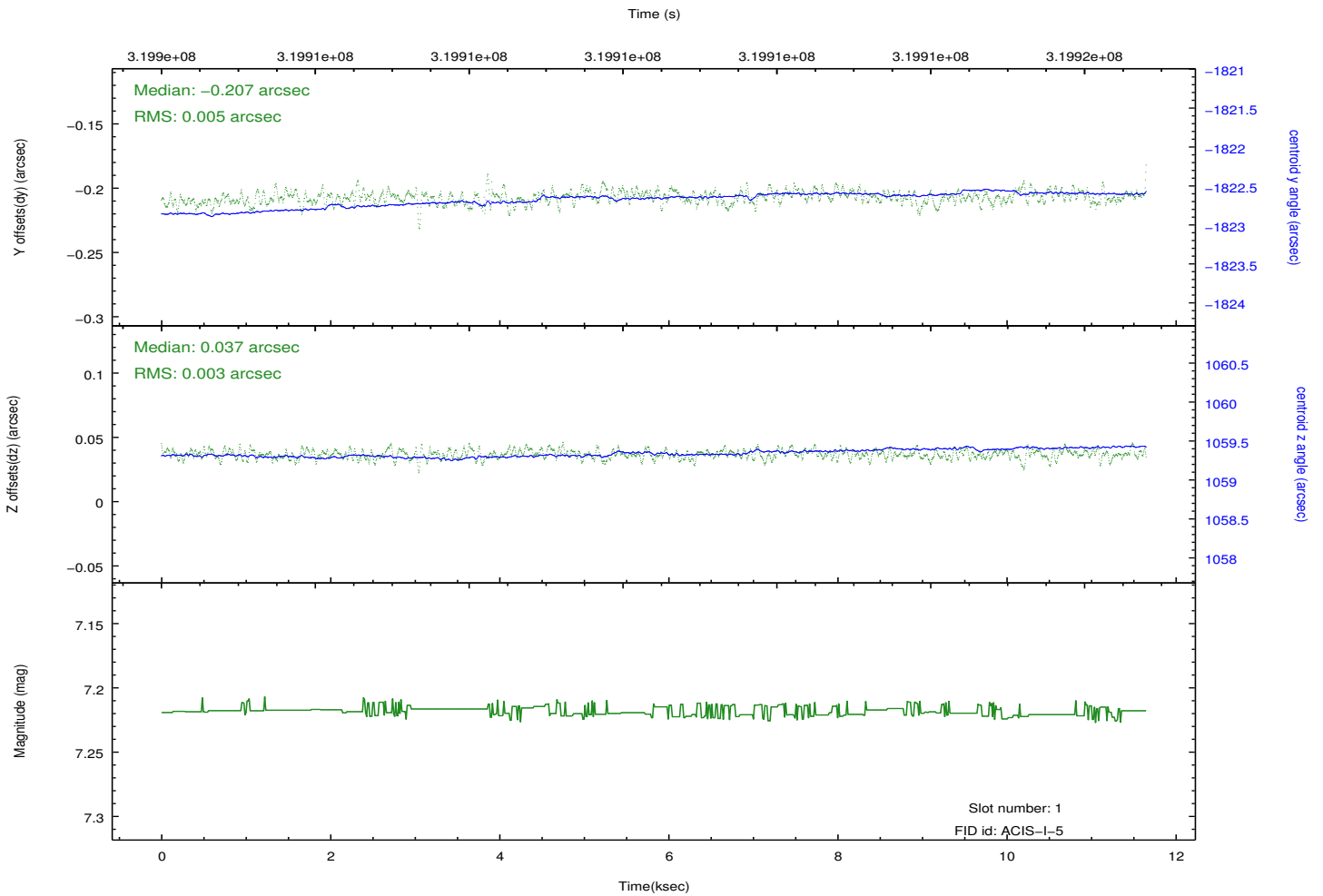
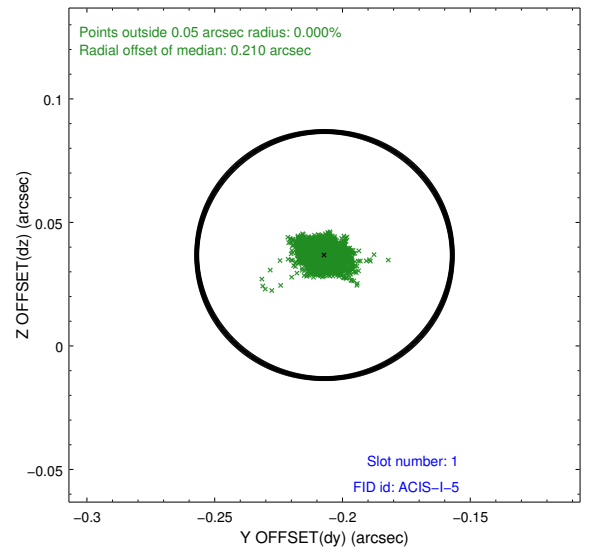
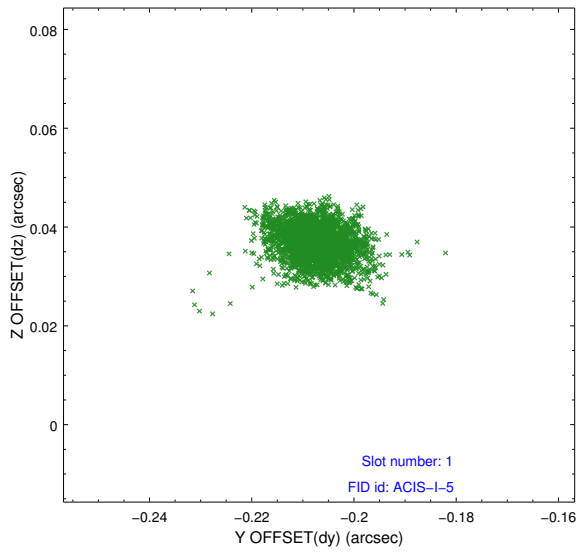


2.5 FID Slots

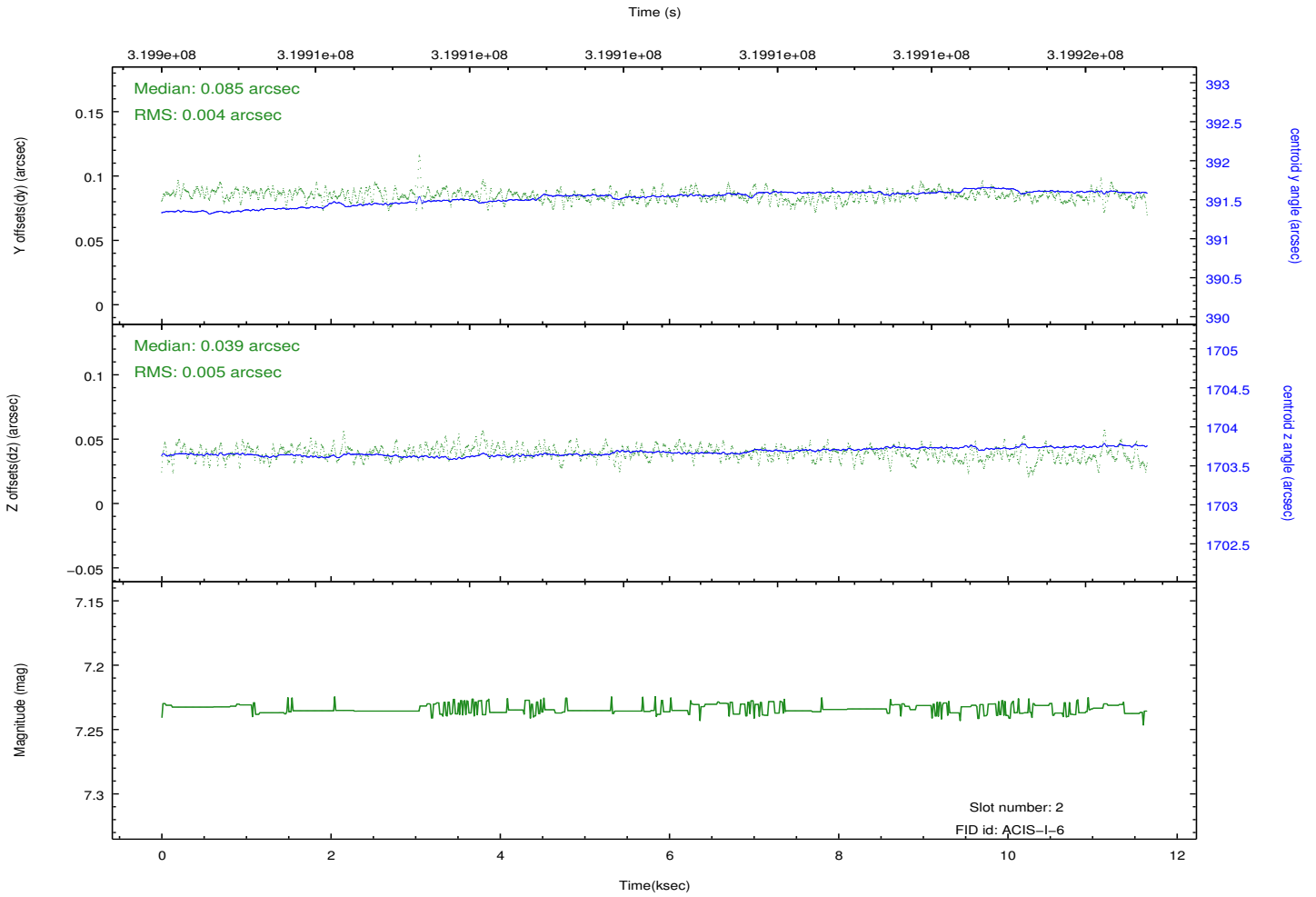
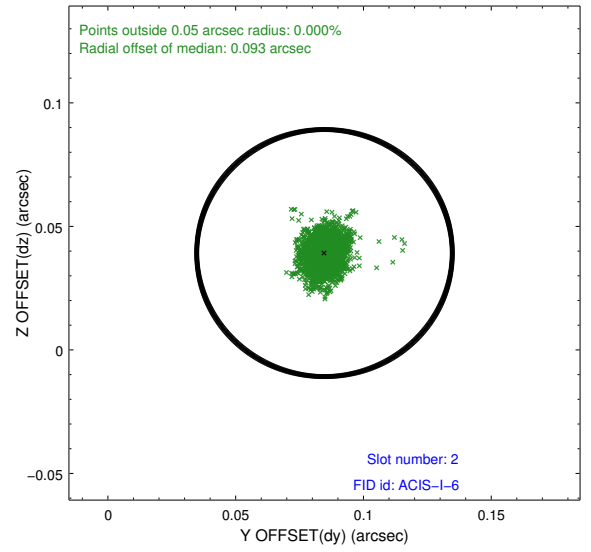
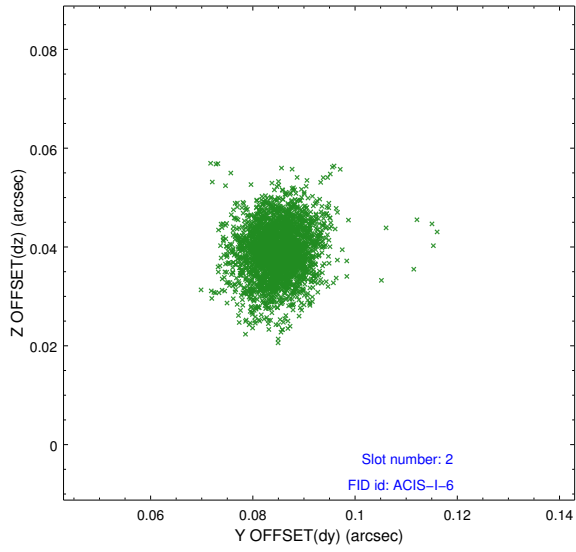
2.5.1 Slot 0



2.5.2 Slot 1



2.5.3 Slot 2



A Summary

A.1 Status

V&V Scientist	Jen Lauer
V&V Date (YYYY-MM-DD)	2012.05.13
V&V Edition	1
V&V Disposition and Status	OK
V&V Charge Time	11.1551999

A.2 Comments

Roll preference not met.