

V&V Reference Report

L2 ASCDS Version : 8.4.4

Observation 9553 - L2 Version 2
Chandra X-Ray Center

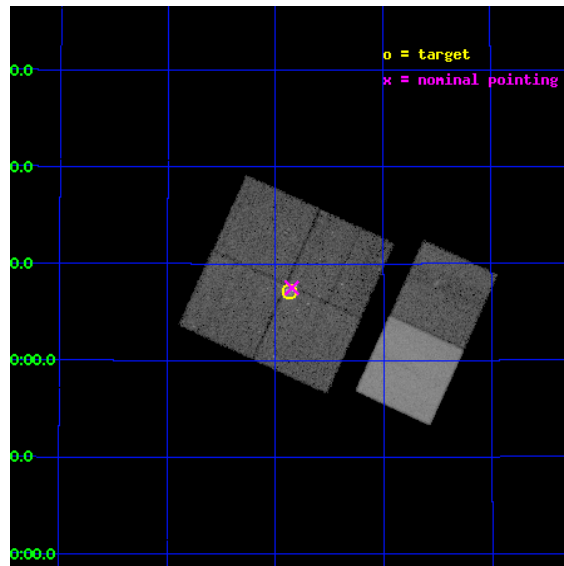
L2 Processing Date : May 9 2012

Contents

1	Front	2
2	OBI	3
2.1	OBI	3
2.1.1	Images	3
2.1.2	Bias	3
2.1.3	Parameters	4
2.1.4	Events	4
2.2	Compared Parameters	5
2.3	Aspect	6
2.4	Star Slots	9
2.4.1	Slot 3	9
2.4.2	Slot 4	10
2.4.3	Slot 5	11
2.4.4	Slot 6	12
2.4.5	Slot 7	13
2.5	FID Slots	14
2.5.1	Slot 0	14
2.5.2	Slot 1	15
2.5.3	Slot 2	16
A	Summary	17
A.1	Status	17
A.2	Comments	17

1 Front

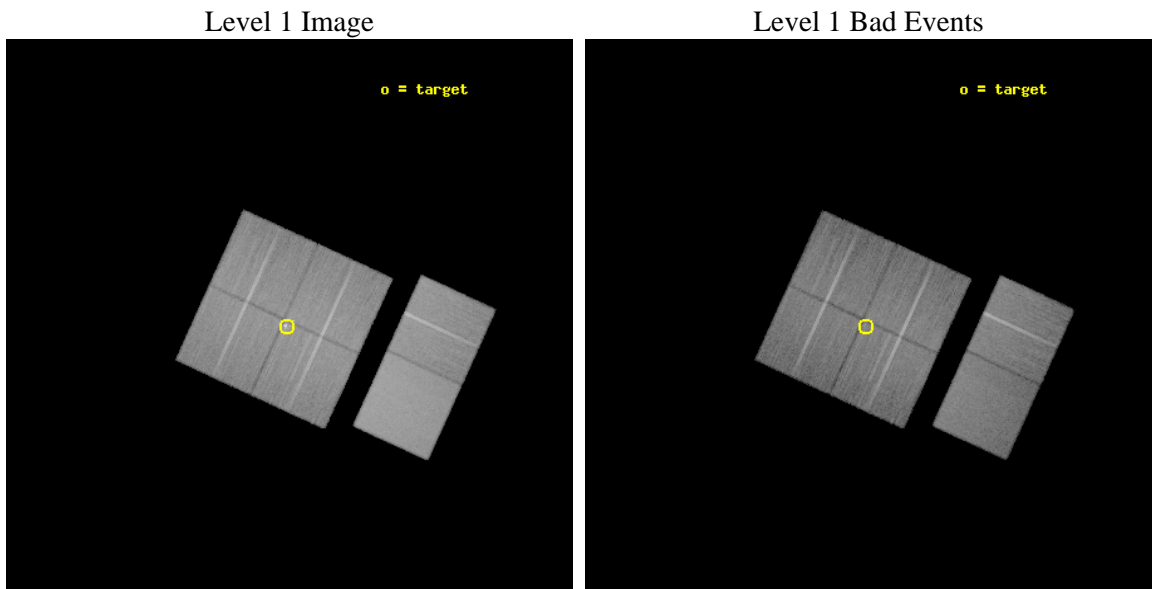
seq_num	600694	Sequence number
obs_id	9553	Observation id
title	Galaxies across the Octaves: A Chandra Legacy Survey of SINGS Galaxies	Proposal title
observer	Dr Leigh Jenkins	Principal investigator
object	NGC 4736	Source name
dtcycle	0	
cycle	P	events from which exps? Prim/Second/Both
ra_targ	192.719167	Observer's specified target RA [deg]
dec_targ	41.11925	Observer's specified target Dec [deg]
ra_nom	192.71202274065	Nominal RA [deg]
dec_nom	41.125280462346	Nominal Dec [deg]
roll_nom	114.57490750183	Nominal Roll [deg]
revision	2	Processing version of data
ontime	24652.786097825	Sum of GTIs [s]
livetime	24340.617676128	Livetime [s]
ontime0	24652.662977815	Sum of GTIs [s]
ontime1	24652.704017818	Sum of GTIs [s]
ontime2	24652.745057821	Sum of GTIs [s]
ontime3	24652.786097825	Sum of GTIs [s]
ontime6	24652.799908221	Sum of GTIs [s]
ontime7	24652.799908221	Sum of GTIs [s]
l2events	261643	Number of level 2 events



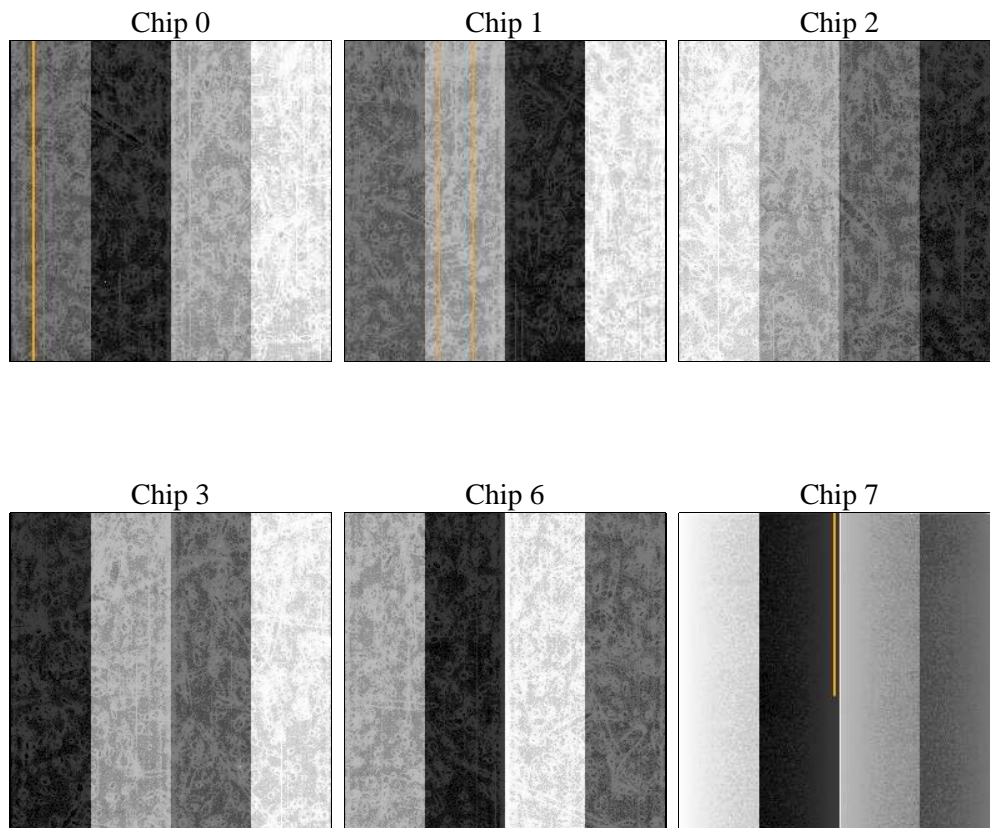
2 OBI

2.1 OBI

2.1.1 Images



2.1.2 Bias



2.1.3 Parameters

obi_num	1	Obi number	sched_exp_time	24700.000000	[s] Scheduled observation exposure time
ascdsver	8.4.4	Processing system revision	ontime	24652.786097825	Sum of GTIs [s]
caldbver	4.4.9	 	ontime0	24652.662977815	Sum of GTIs [s]
date	2012-05-09T19:06:52	Date and time of file creation	ontime1	24652.704017818	Sum of GTIs [s]
revision	2	Processing version of data	ontime2	24652.745057821	Sum of GTIs [s]
			ontime3	24652.786097825	Sum of GTIs [s]
			ontime6	24652.799908221	Sum of GTIs [s]
			ontime7	24652.799908221	Sum of GTIs [s]
			l1events	1468237	Number of level 1 events

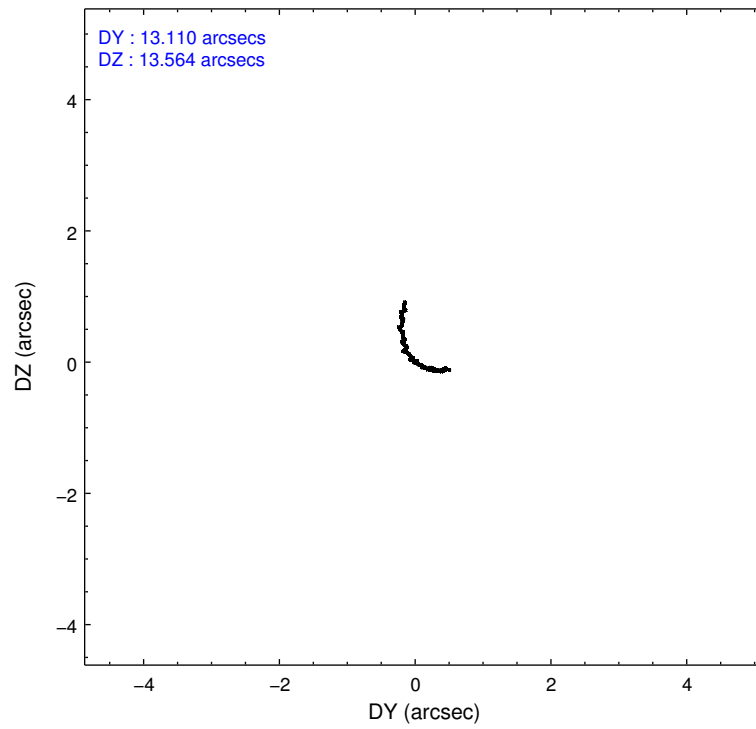
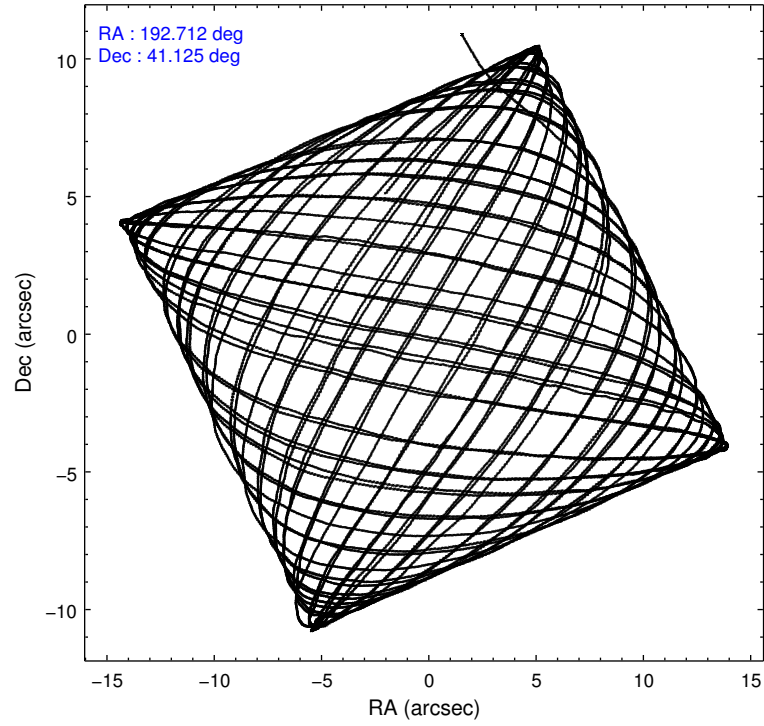
2.1.4 Events

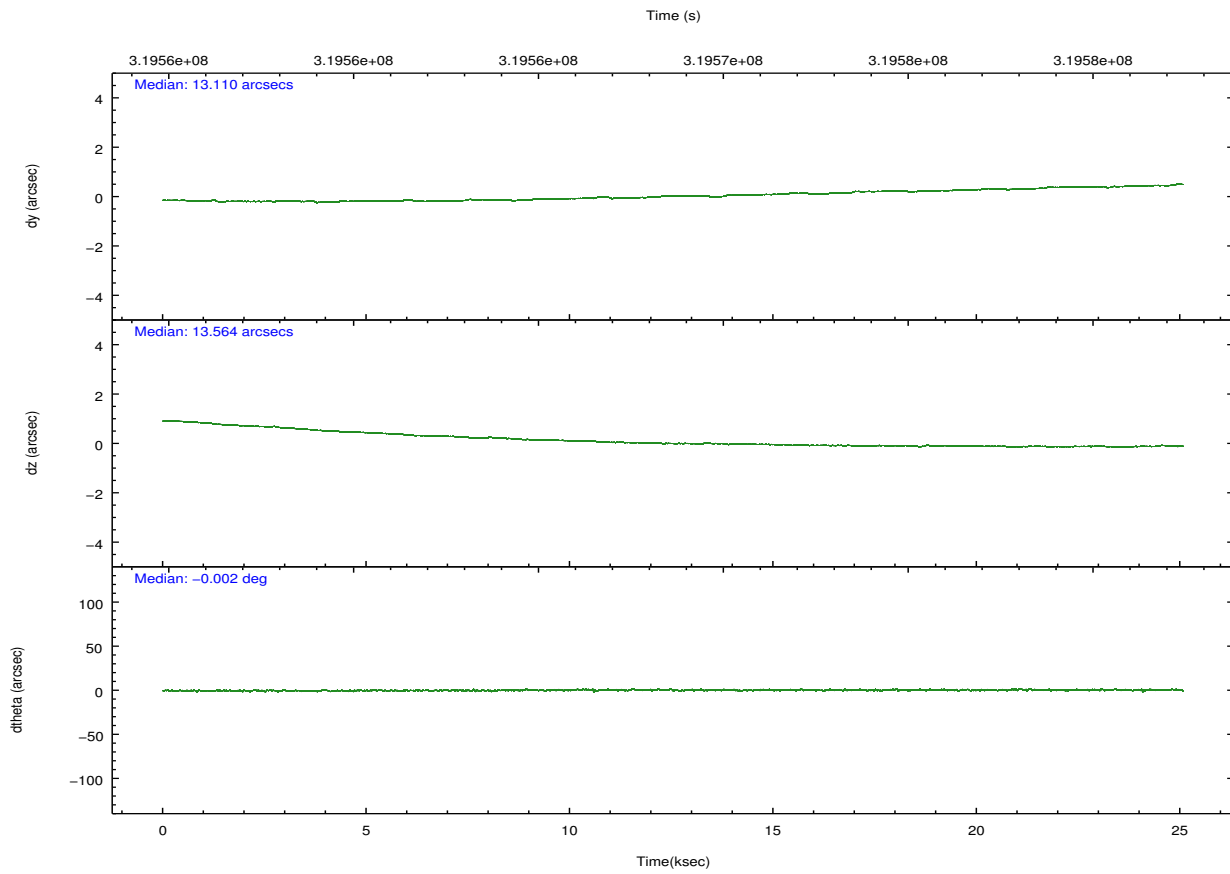
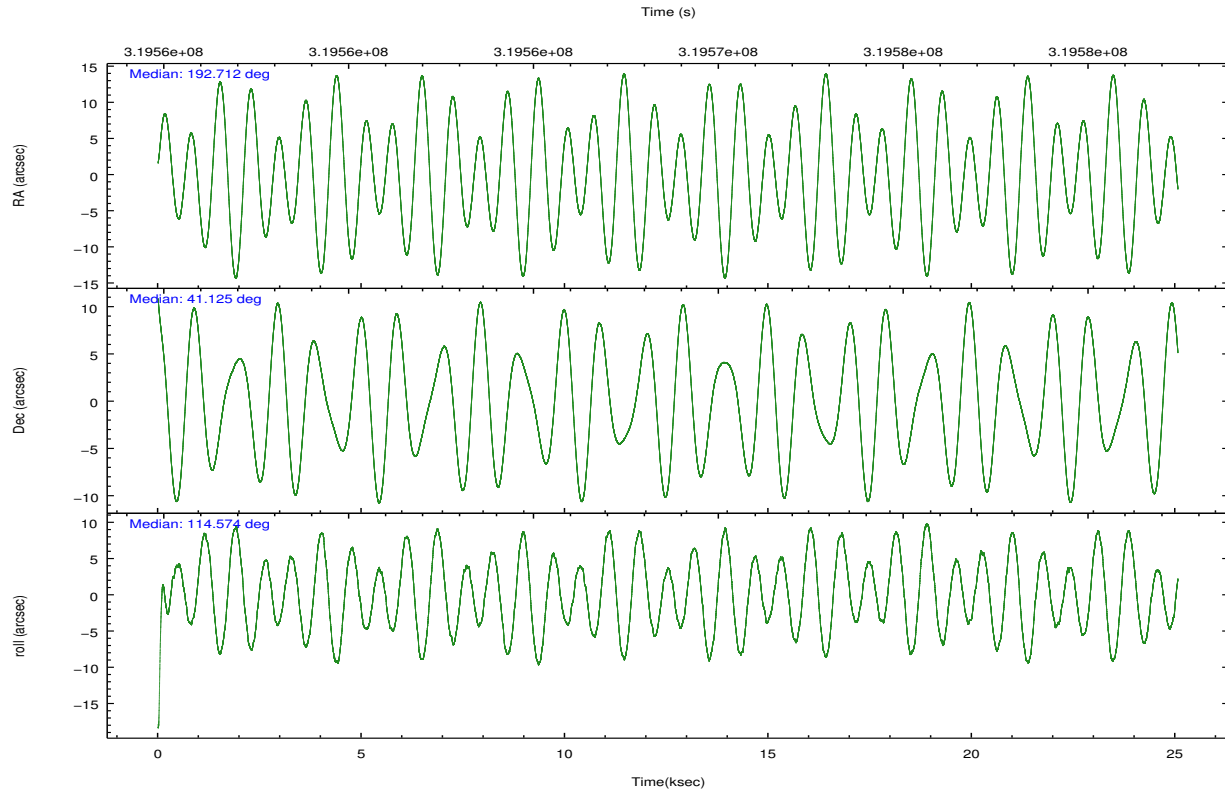
	ccd 0	ccd 1	ccd 2	ccd 3	ccd 6	ccd 7		ccd 0	ccd 1	ccd 2	ccd 3	ccd 6	ccd 7
level 1 events	214281	215532	234686	235322	244853	323563	grade 0 events	11942	11486	11939	17749	11106	11358
rejected events	185606	185424	207218	200561	216193	189298		5%	5%	5%	7%	4%	3%
rejected %	86%	86%	88%	85%	88%	58%	grade 1 events	151	136	158	252	127	348
								0%	0%	0%	0%	0%	0%
							grade 2 events	6364	7093	5862	6237	6451	27364
								2%	3%	2%	2%	2%	8%
							grade 3 events	2746	2809	2484	2793	2587	11207
								1%	1%	1%	1%	1%	3%
							grade 4 events	2502	2816	2540	2882	2670	11105
								1%	1%	1%	1%	1%	3%
							grade 5 events	9687	10204	9174	11031	11441	30627
								4%	4%	3%	4%	4%	9%
							grade 6 events	5131	5911	4650	5111	5851	73244
								2%	2%	1%	2%	2%	22%
							grade 7 events	175758	175077	197879	189267	204620	158310
								82%	81%	84%	80%	83%	48%

2.2 Compared Parameters

Parameter	Planned	Actual	Parameter	Planned	Actual
Instrument	ACIS	ACIS	Obspar format version number	7	7
Detector	ACIS-012367	ACIS-012367	Obspar file type	PREDICTED	ACTUAL
Grating	NONE	NONE	Obspar update status	NONE	UPDATED
Data mode	FAINT	FAINT	CCD I0 on	Y	Y
Observation mode	POINTING	POINTING	CCD I1 on	Y	Y
[deg] Pointing RA	192.741837	192.7120227406524	CCD I2 on	Y	Y
[deg] Pointing Dec	41.109417	41.12528046234592	CCD I3 on	Y	Y
[deg] Pointing Roll	114.346627	114.5749075018262	CCD S0 on	N	N
[mm] SIM focus pos	-0.782348	-0.7809083437167272	CCD S1 on	N	N
[mm] SIM defocus	0	0.001439871863259334	CCD S2 on	O2	Y
[mm] SIM translation stage pos	-233.592463	-233.5874344608287	CCD S3 on	O1	Y
[mm] SIM translation stage offset	0	-0.005018542100998502	CCD S4 on	N	N
[s] Observation start time (MET)	319556475.184000	319555422.54792	CCD S5 on	N	N
Observation start date	2008-02-16T13:40:10	2008-02-16T13:23:42	Number of optional ACIS chips dropped	0	0
[s] Observation end time (MET)	319581175.184000	319581508.79919	On-chip summing requested	N	N
Observation end date	2008-02-16T20:31:50	2008-02-16T20:38:28	Subarray requested	NONE	NONE
Read mode	TIMED	TIMED	Alternating exposures requested	N	N
			[s] Primary exposure time	0.000000	3.2

2.3 Aspect



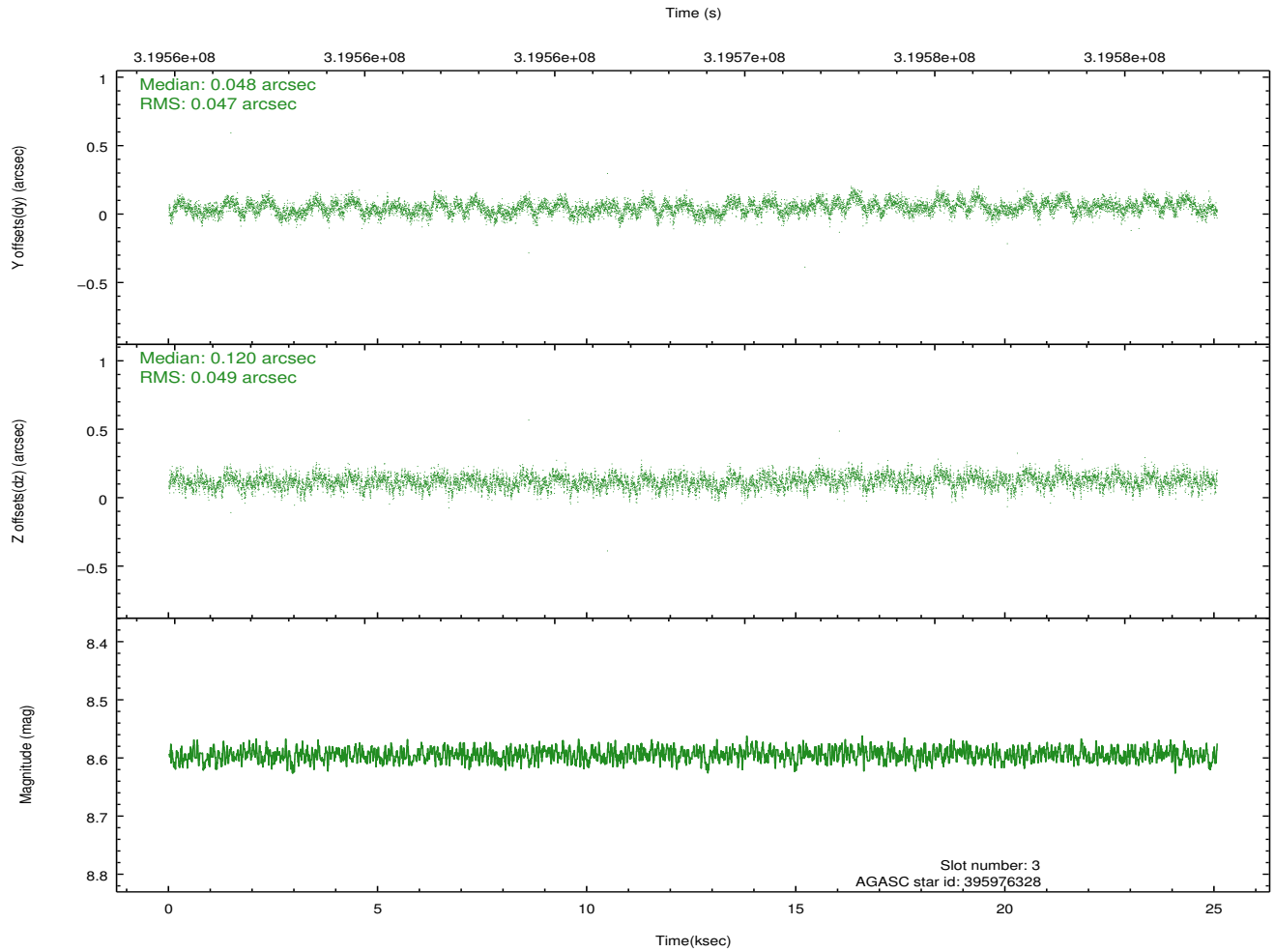
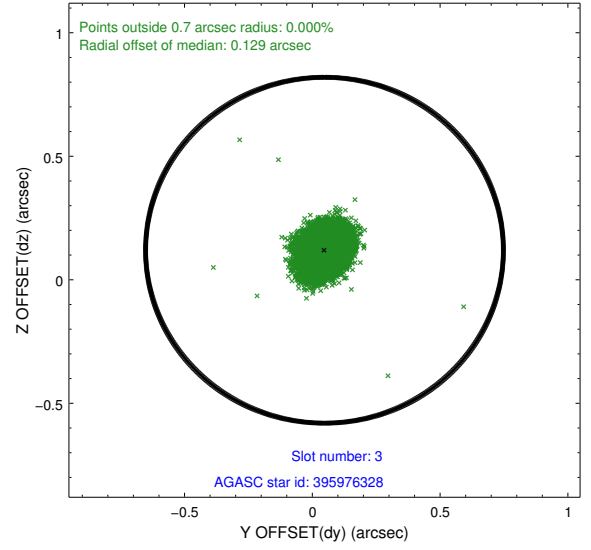
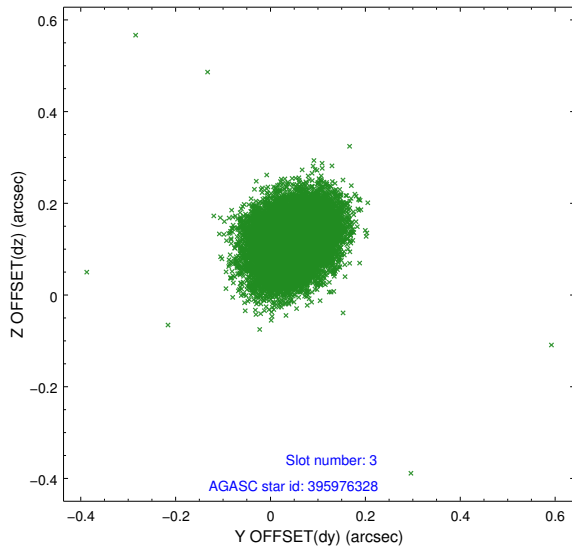


Slot Statistics

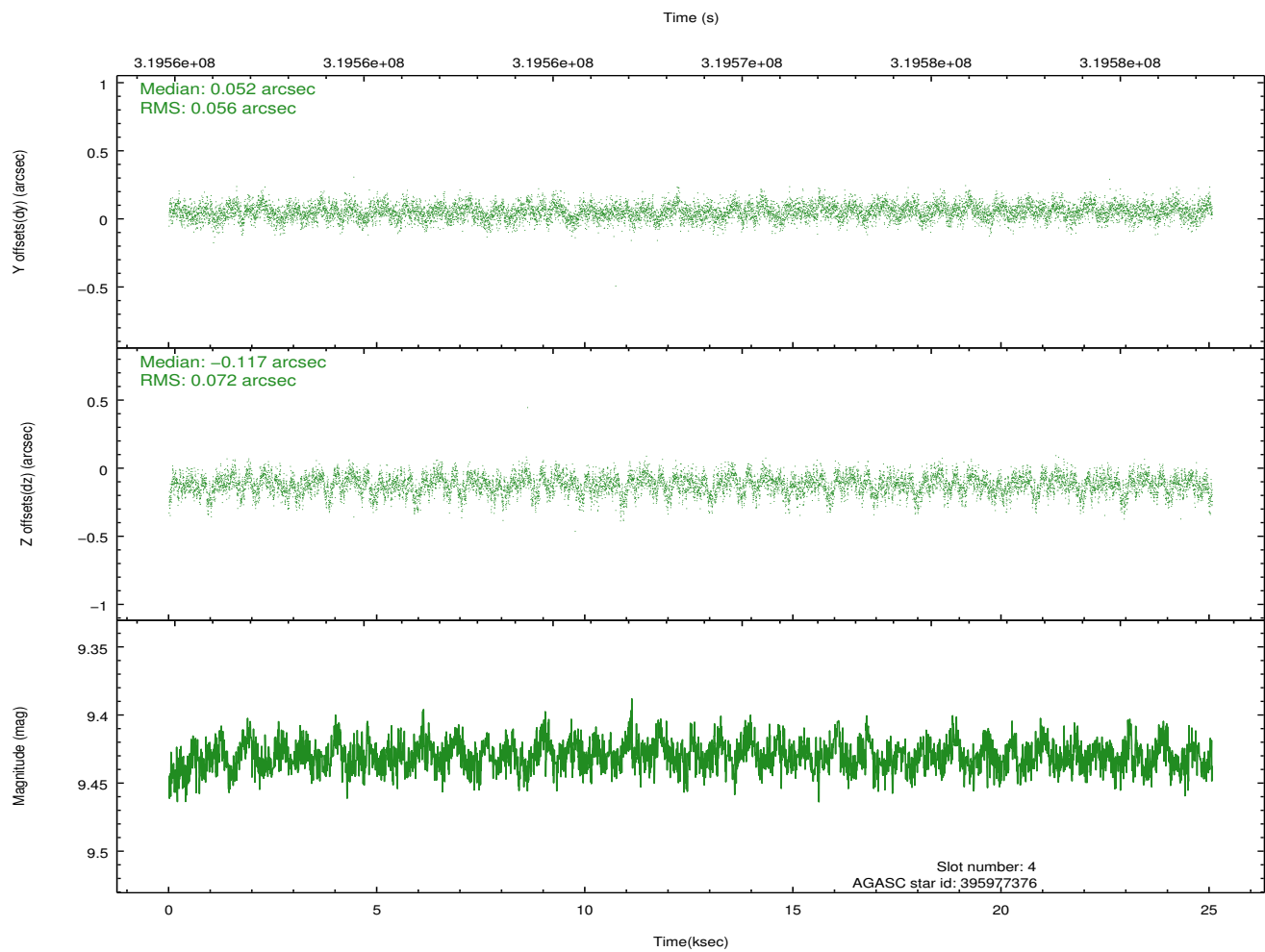
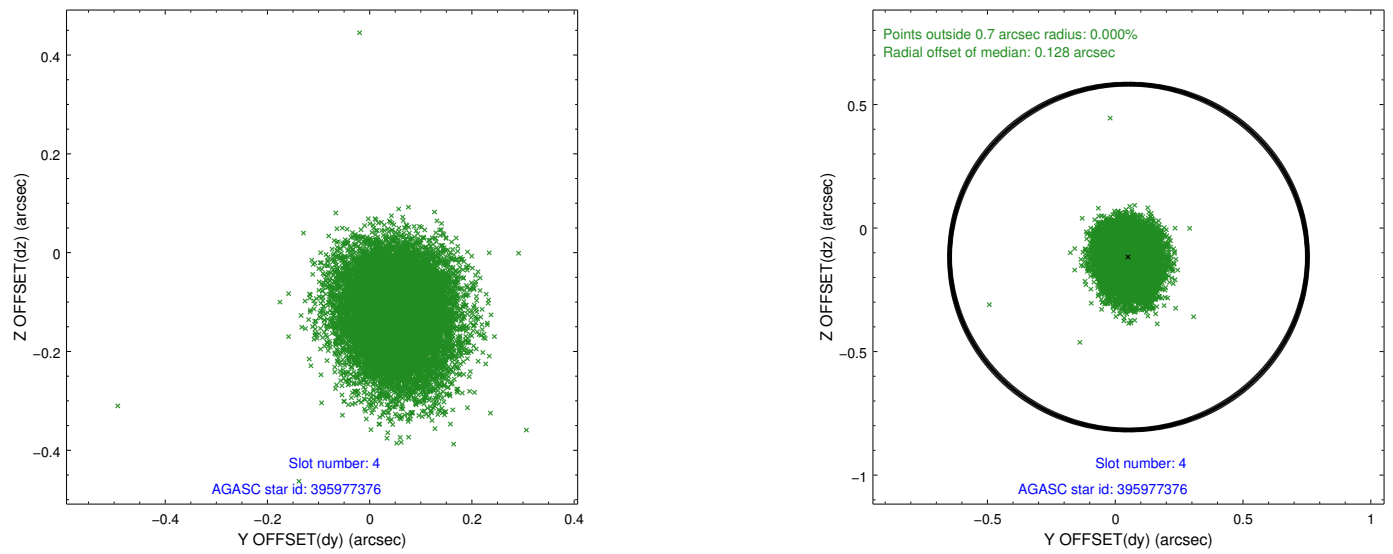
slot	status	id	mag	n_pts	med_dy	med_dz	dr1	dr2	ra	dec	mean_y	mean_z
0	FID	ACIS-I-1	7.23	6113	0.031	0.014	0.010	0.016	0.000000	0.000000	926.39	-837.26
1	FID	ACIS-I-5	7.22	6112	-0.186	0.049	0.009	0.015	0.000000	0.000000	-1821.87	1060.20
2	FID	ACIS-I-6	7.23	6114	0.063	0.008	0.013	0.021	0.000000	0.000000	391.83	1704.80
3	GUIDE	395976328	8.60	12222	0.048	0.120	0.072	0.116	193.402586	40.890368	-1453.43	-1315.48
4	GUIDE	395977376	9.43	12221	0.052	-0.117	0.096	0.158	192.809994	40.775894	-1170.29	325.51
5	GUIDE	396232360	9.41	12217	0.009	0.087	0.090	0.148	192.726371	41.259126	508.43	-183.36
6	GUIDE	396238456	8.84	12219	-0.053	-0.112	0.074	0.120	192.210514	41.569667	2103.64	619.21
7	GUIDE	396249736	10.01	12207	-0.052	0.027	0.145	0.235	191.944881	41.503423	2187.52	1369.68

2.4 Star Slots

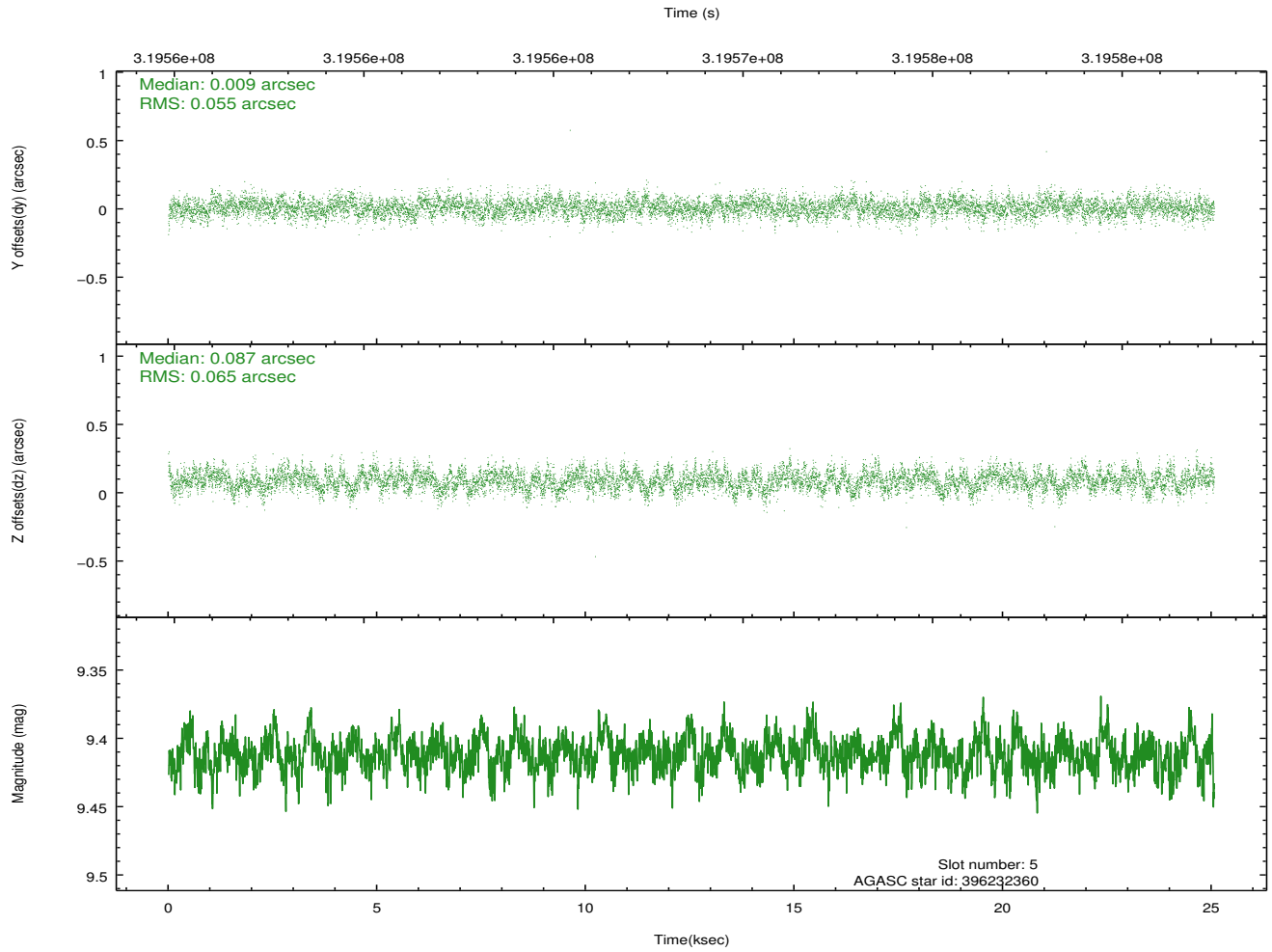
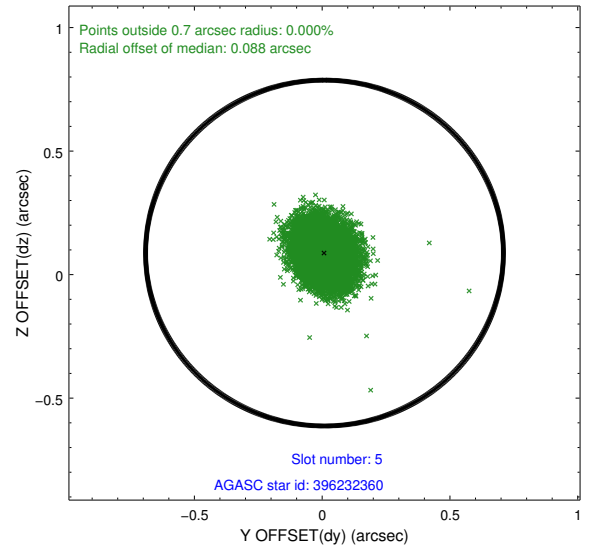
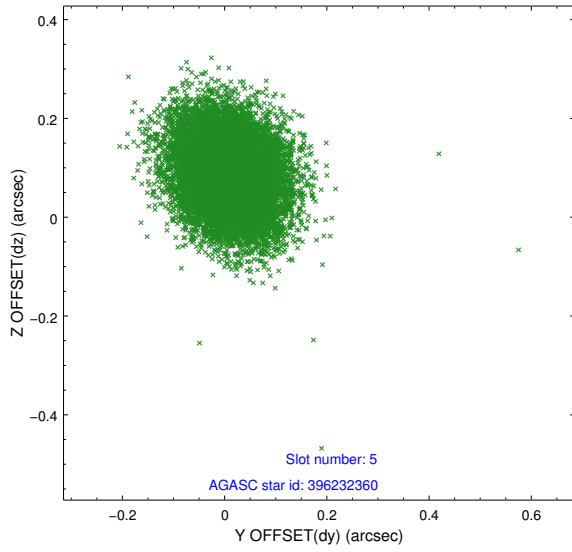
2.4.1 Slot 3



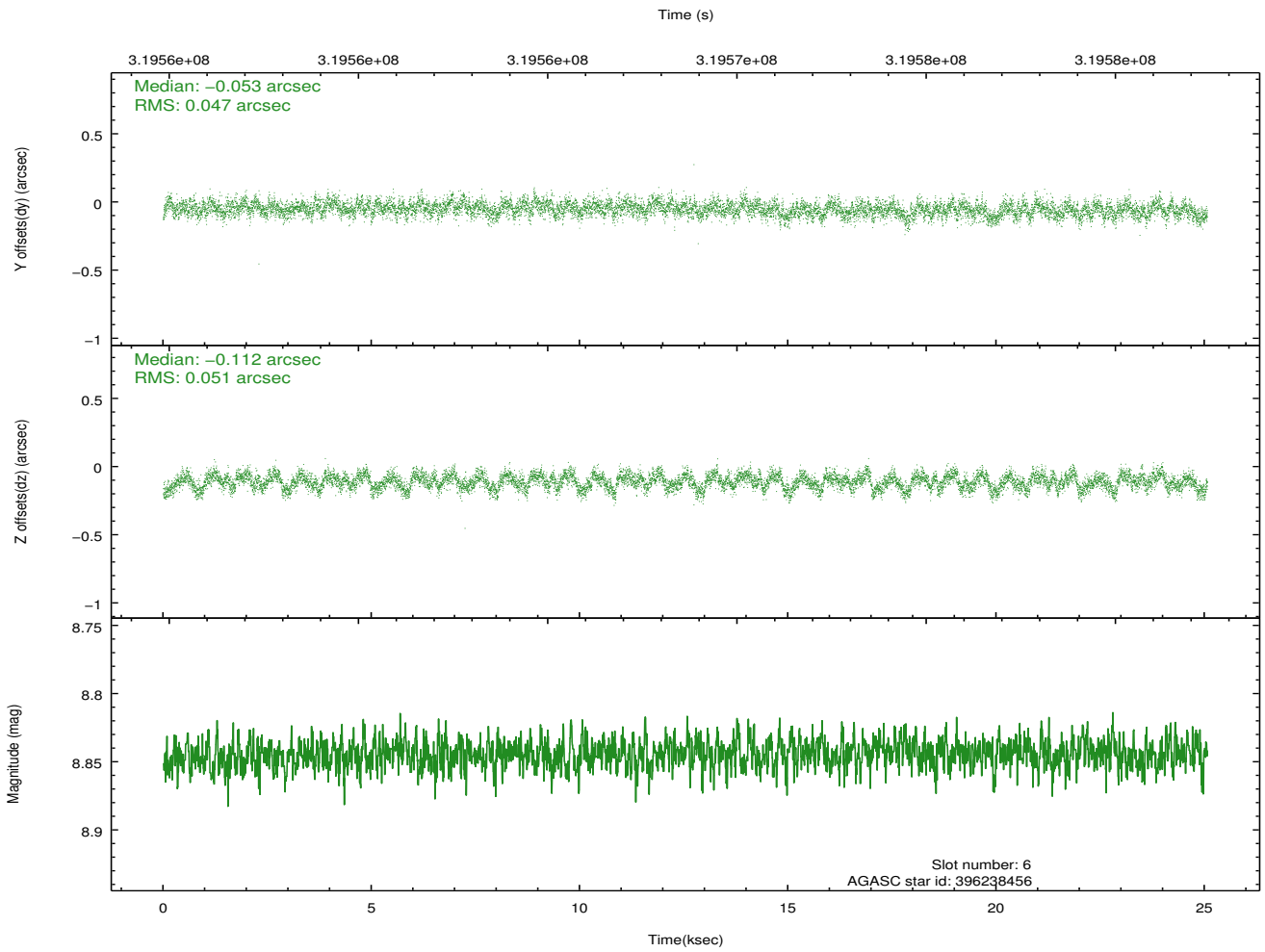
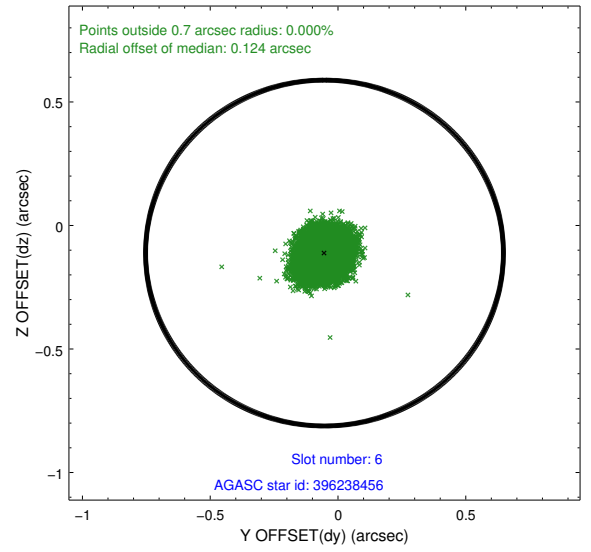
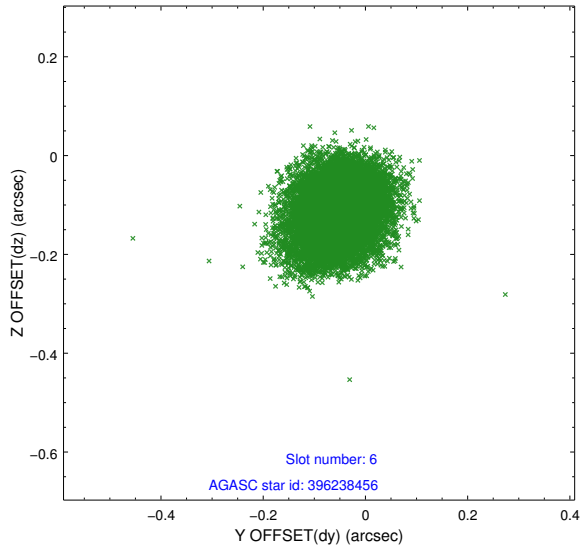
2.4.2 Slot 4



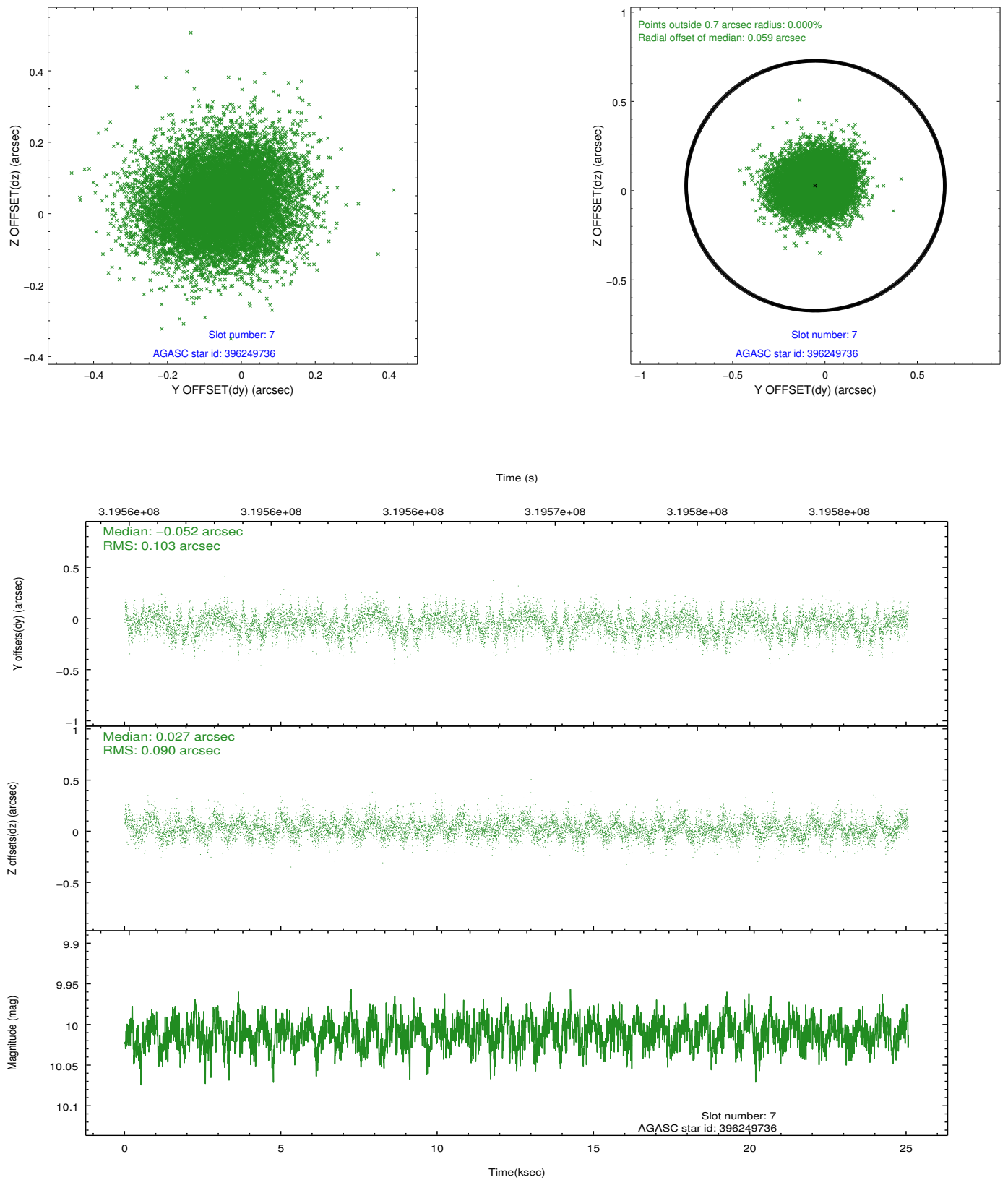
2.4.3 Slot 5



2.4.4 Slot 6

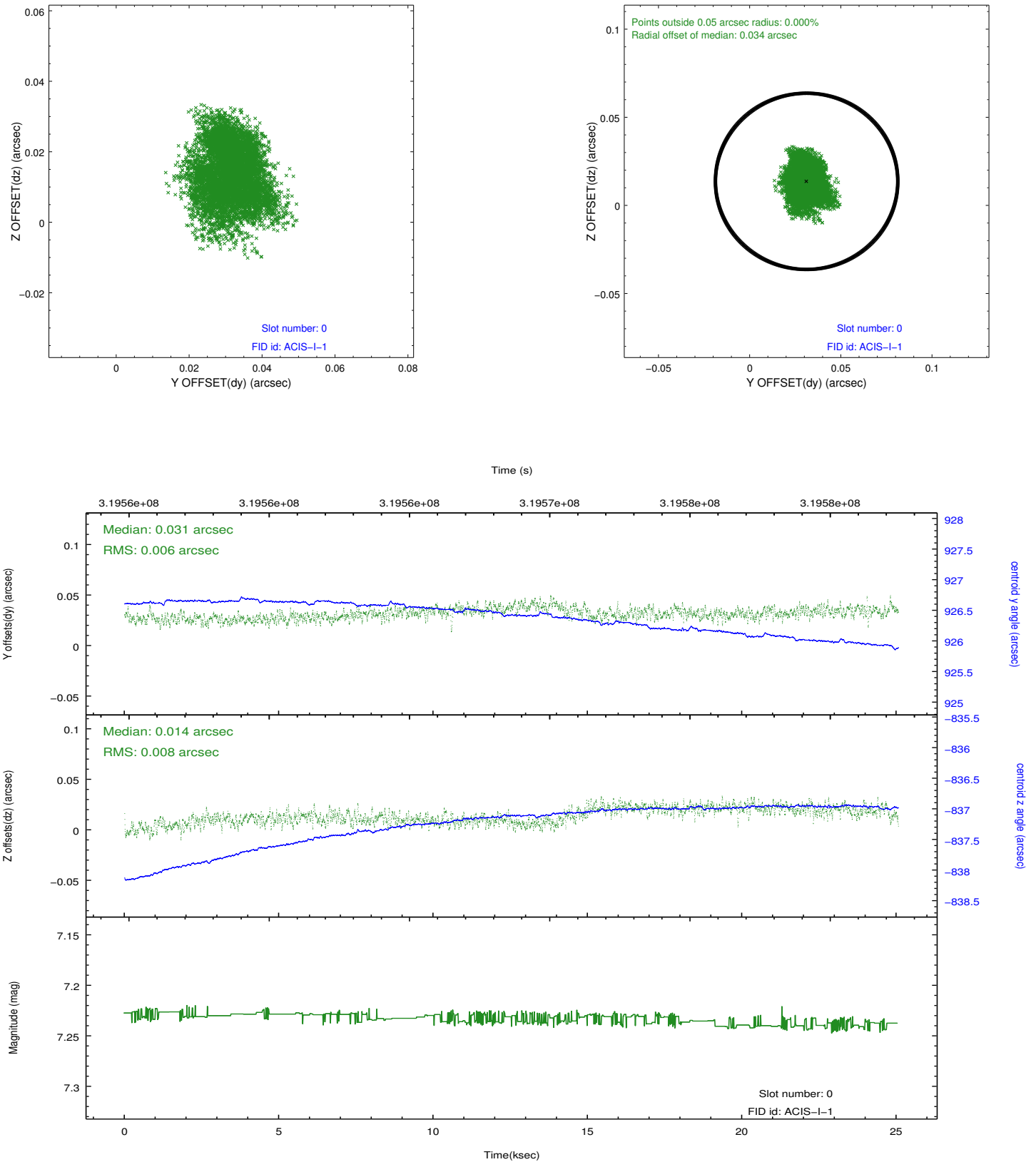


2.4.5 Slot 7

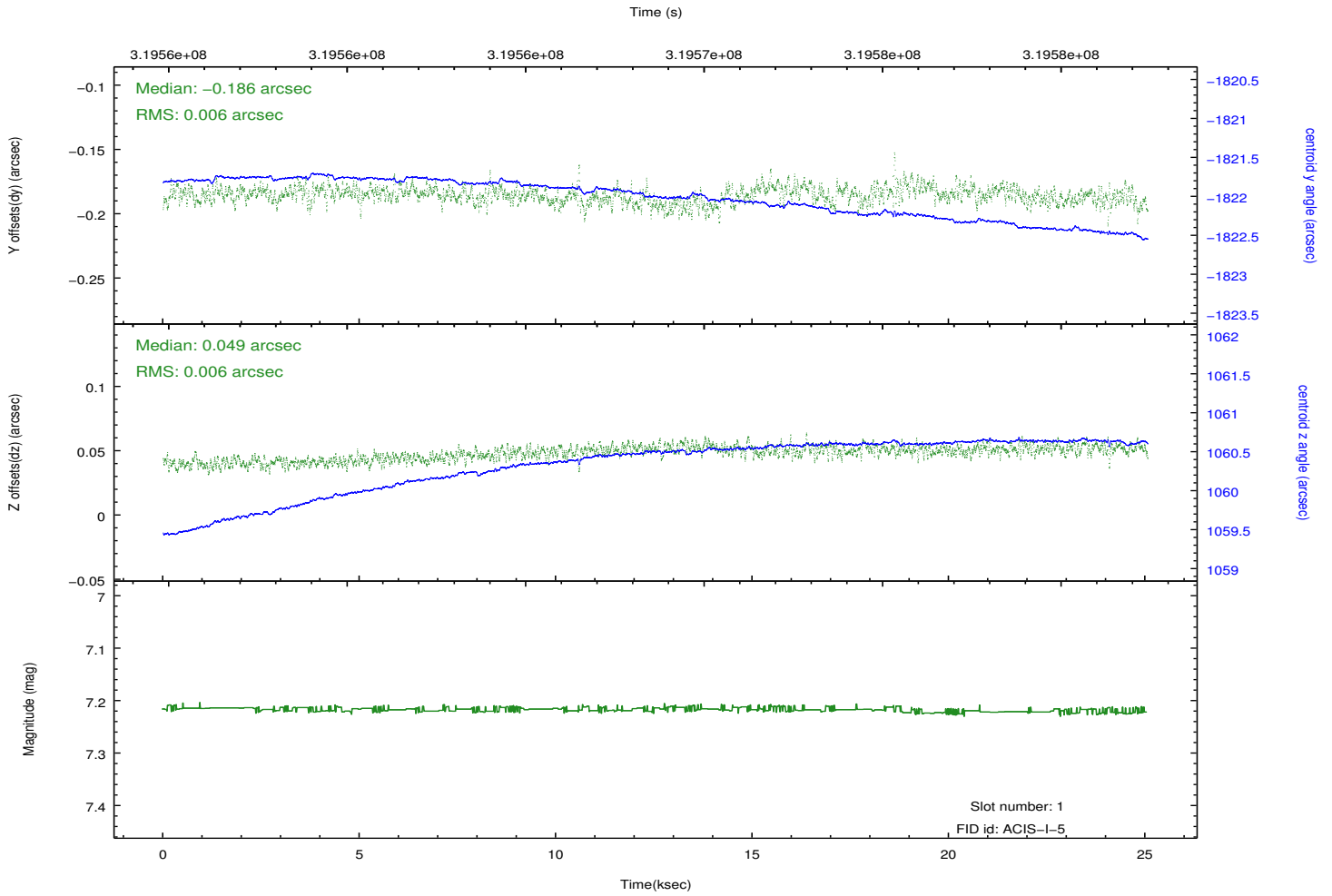
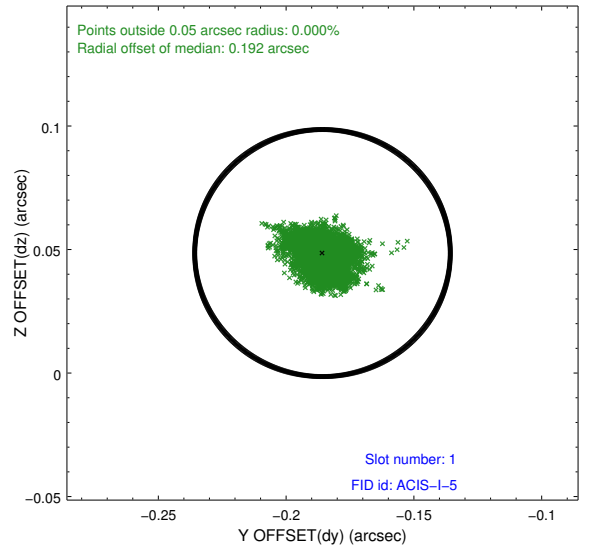
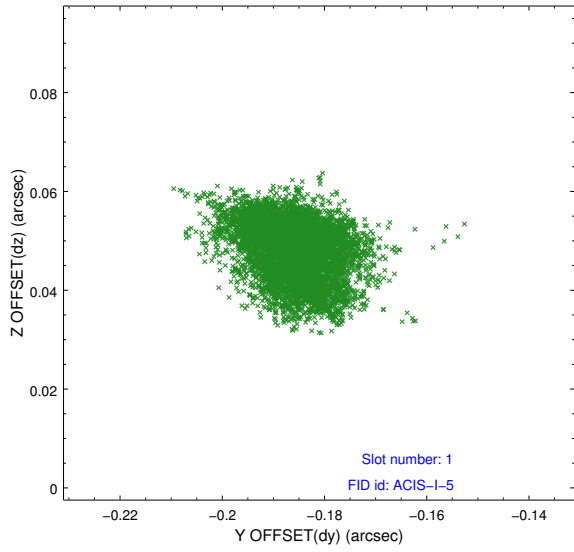


2.5 FID Slots

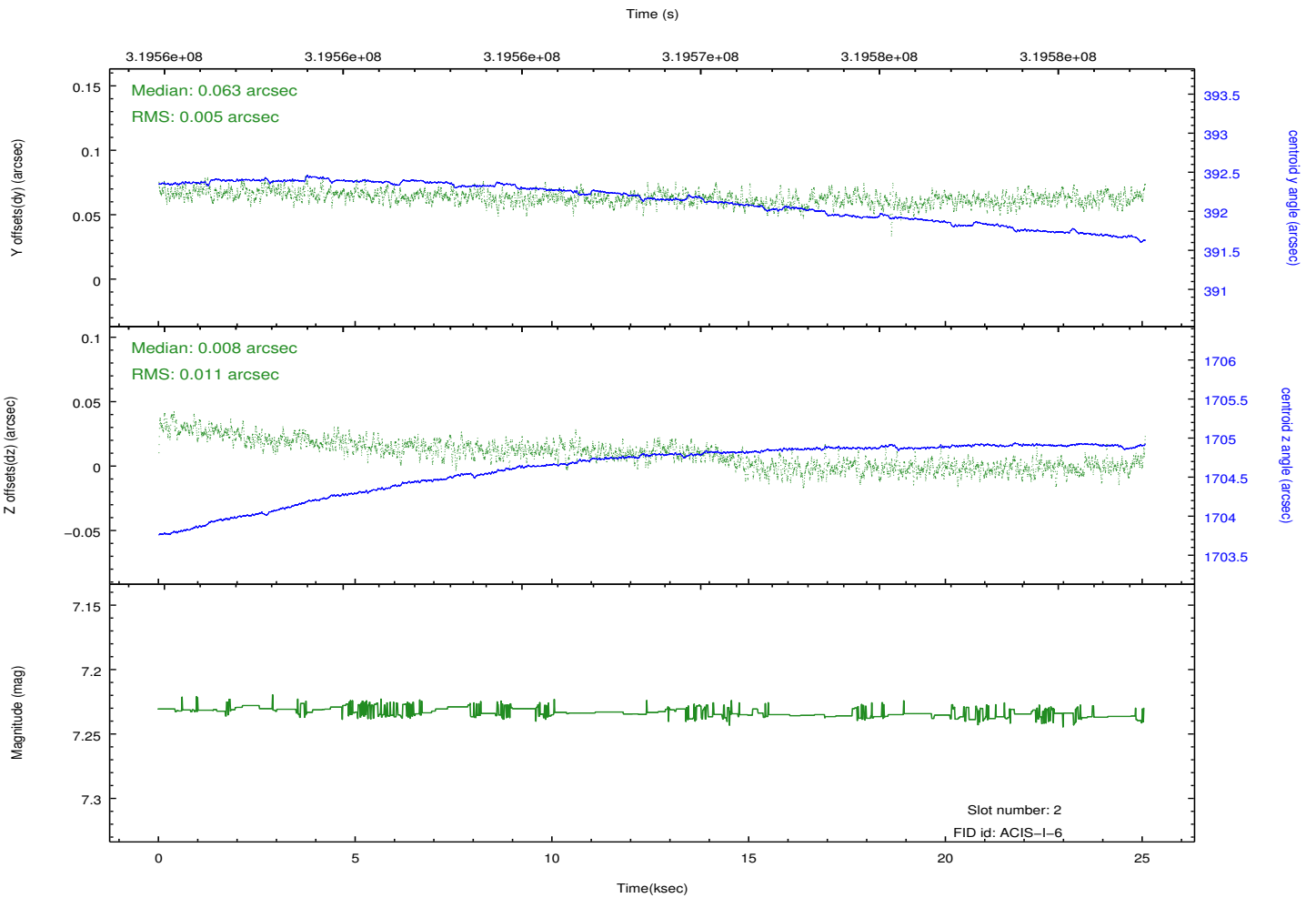
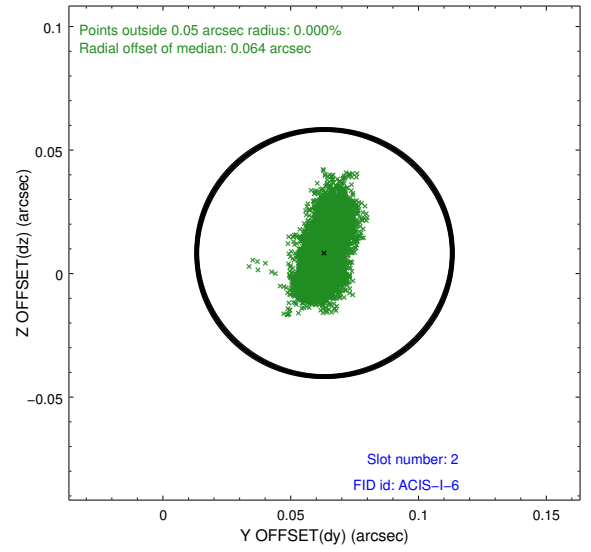
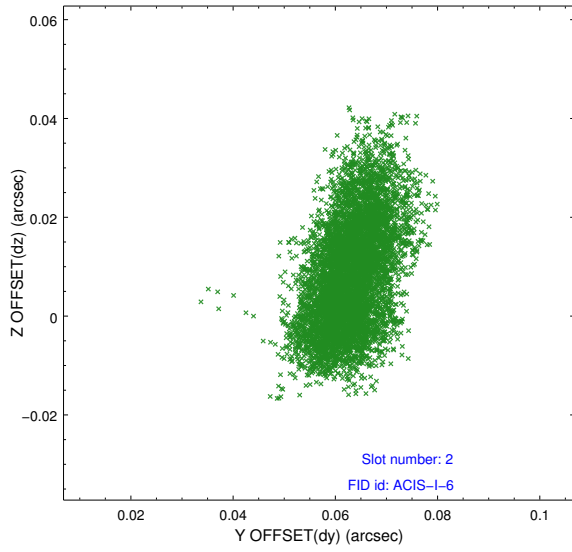
2.5.1 Slot 0



2.5.2 Slot 1



2.5.3 Slot 2



A Summary

A.1 Status

V&V Scientist	Beth Sundheim
V&V Date (YYYY-MM-DD)	2012.05.14
V&V Edition	1
V&V Disposition and Status	OK
V&V Charge Time	24.6527999

A.2 Comments