

# V&V Reference Report

## L2 ASCDS Version : 8.4.4

Observation 9563 - L2 Version 2  
Chandra X-Ray Center

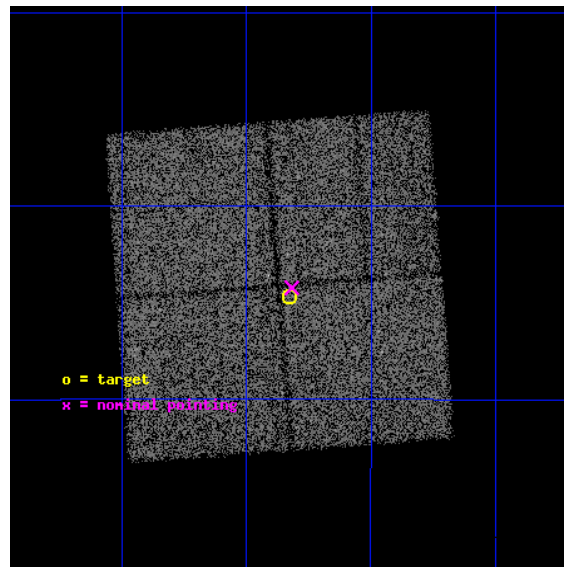
L2 Processing Date : May 14 2012

## Contents

<b>1</b>	<b>Front</b>	<b>2</b>
<b>2</b>	<b>OBI</b>	<b>3</b>
2.1	OBI . . . . .	3
2.1.1	Images . . . . .	3
2.1.2	Bias . . . . .	3
2.1.3	Parameters . . . . .	4
2.1.4	Events . . . . .	4
2.2	Compared Parameters . . . . .	5
2.3	Aspect . . . . .	6
2.4	Star Slots . . . . .	9
2.4.1	Slot 3 . . . . .	9
2.4.2	Slot 4 . . . . .	10
2.4.3	Slot 5 . . . . .	11
2.4.4	Slot 6 . . . . .	12
2.4.5	Slot 7 . . . . .	13
2.5	FID Slots . . . . .	14
2.5.1	Slot 0 . . . . .	14
2.5.2	Slot 1 . . . . .	15
2.5.3	Slot 2 . . . . .	16
<b>A</b>	<b>Summary</b>	<b>17</b>
A.1	Status . . . . .	17
A.2	Comments . . . . .	17

# 1 Front

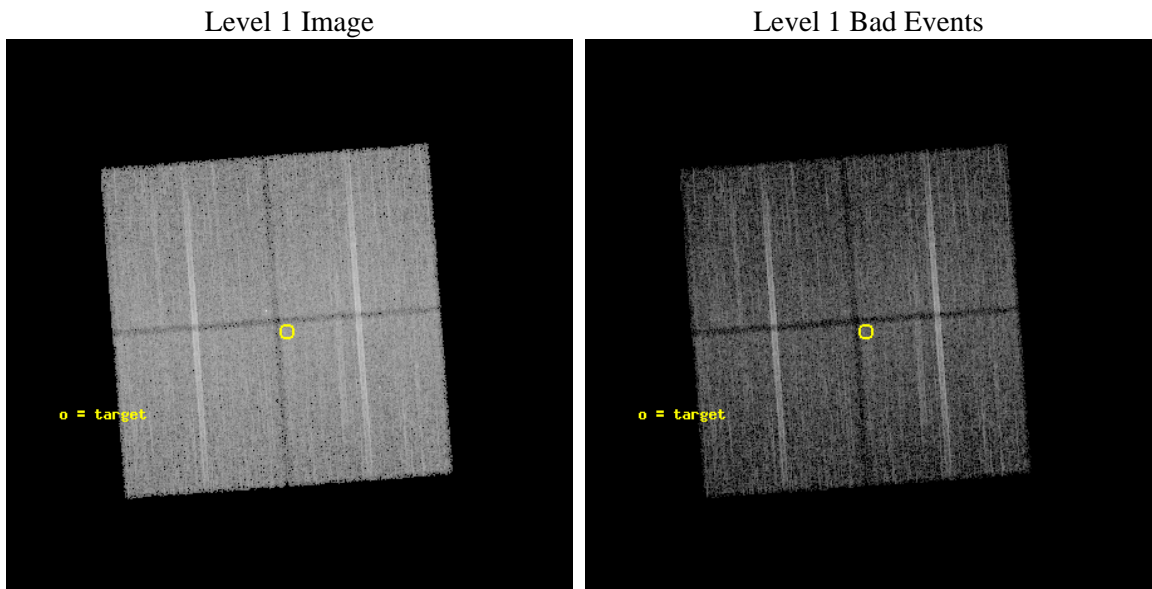
seq_num	600704	Sequence number
obs_id	9563	Observation id
title	Galactic Bulge Latitude Survey -3	Proposal title
observer	Professor Johnathan Grindlay	Principal investigator
object	GBW17	Source name
dtcycle	0	&#160
cycle	P	events from which exps? Prim/Second/Both
ra_targ	267.456667	Observer's specified target RA [deg]
dec_targ	-29.745167	Observer's specified target Dec [deg]
ra_nom	267.45456852401	Nominal RA [deg]
dec_nom	-29.737307085236	Nominal Dec [deg]
roll_nom	85.707637316609	Nominal Roll [deg]
revision	2	Processing version of data
ontime	15056.7001158	Sum of GTIs [s]
livetime	14859.973244206	Livetime [s]
ontime0	15053.524526417	Sum of GTIs [s]
ontime1	15056.7001158	Sum of GTIs [s]
ontime2	15056.7001158	Sum of GTIs [s]
ontime3	15056.7001158	Sum of GTIs [s]
l2events	72489	Number of level 2 events



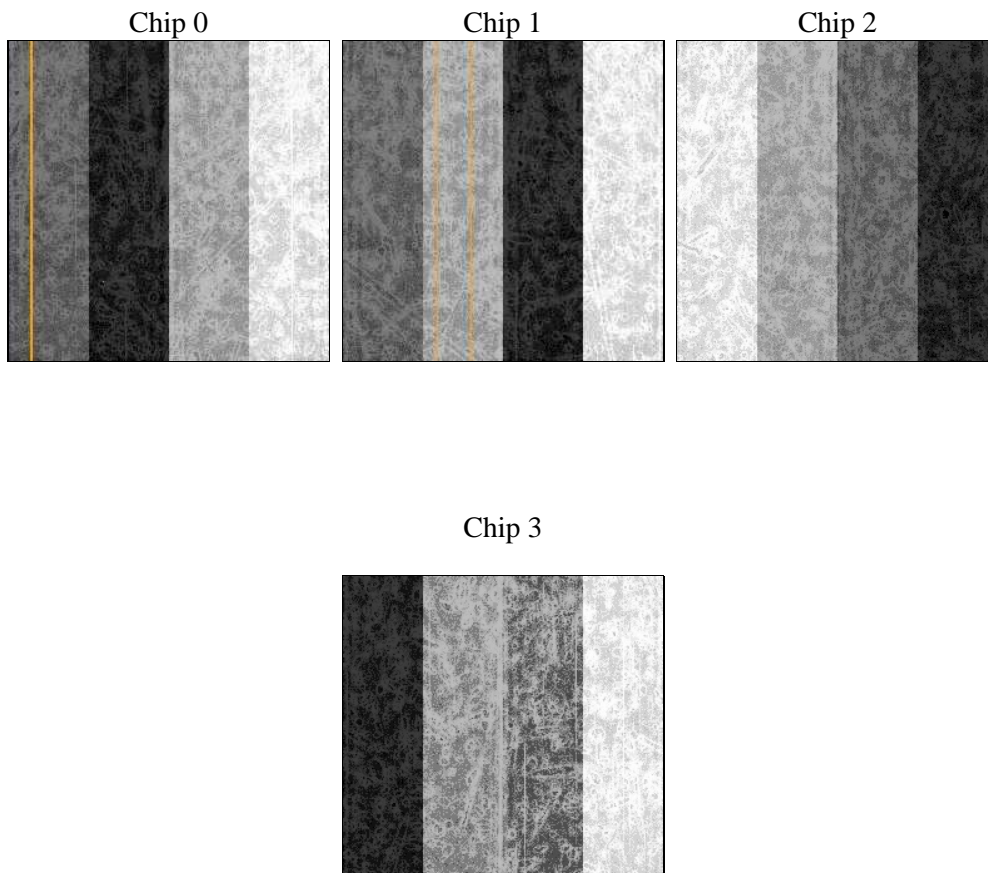
## 2 OBI

### 2.1 OBI

#### 2.1.1 Images



#### 2.1.2 Bias



### 2.1.3 Parameters

obi_num	0	Obi number	sched_exp_time	15000.000000	[s] Scheduled observation exposure time
ascdsver	8.4.4	Processing system revision	ontime	15056.7001158	Sum of GTIs [s]
caldsver	4.4.9	&#160	ontime0	15053.524526417	Sum of GTIs [s]
date	2012-05-14T02:58:00	Date and time of file creation	ontime1	15056.7001158	Sum of GTIs [s]
revision	2	Processing version of data	ontime2	15056.7001158	Sum of GTIs [s]
			ontime3	15056.7001158	Sum of GTIs [s]
			l1events	547271	Number of level 1 events

### 2.1.4 Events

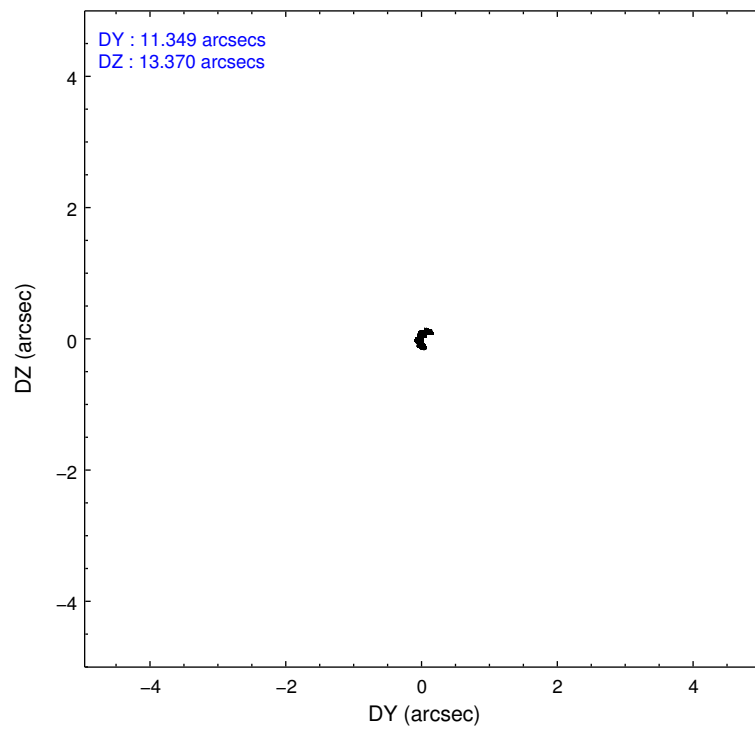
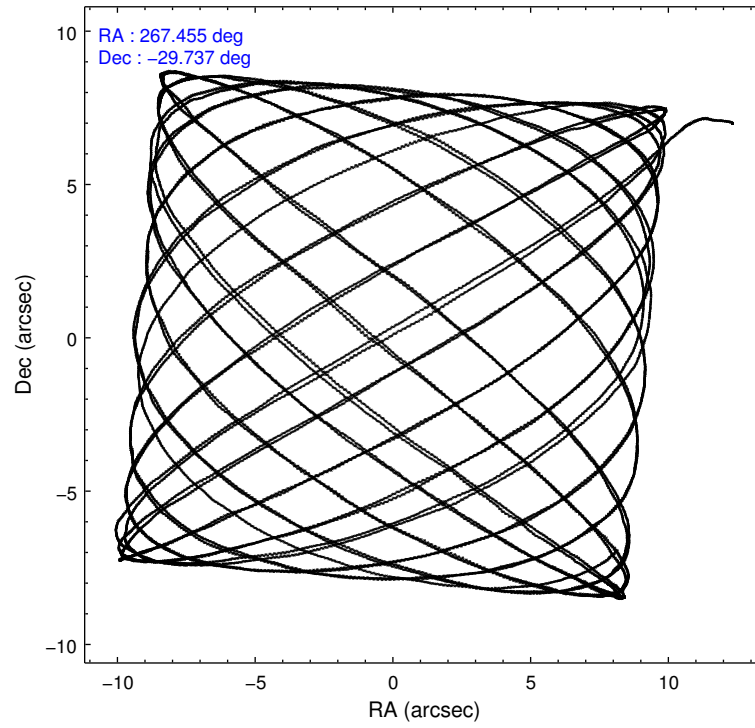
	ccd 0	ccd 1	ccd 2	ccd 3
level 1 events	131959	134267	143181	137864
rejected events	109490	113624	122886	118178
rejected %	82%	84%	85%	85%

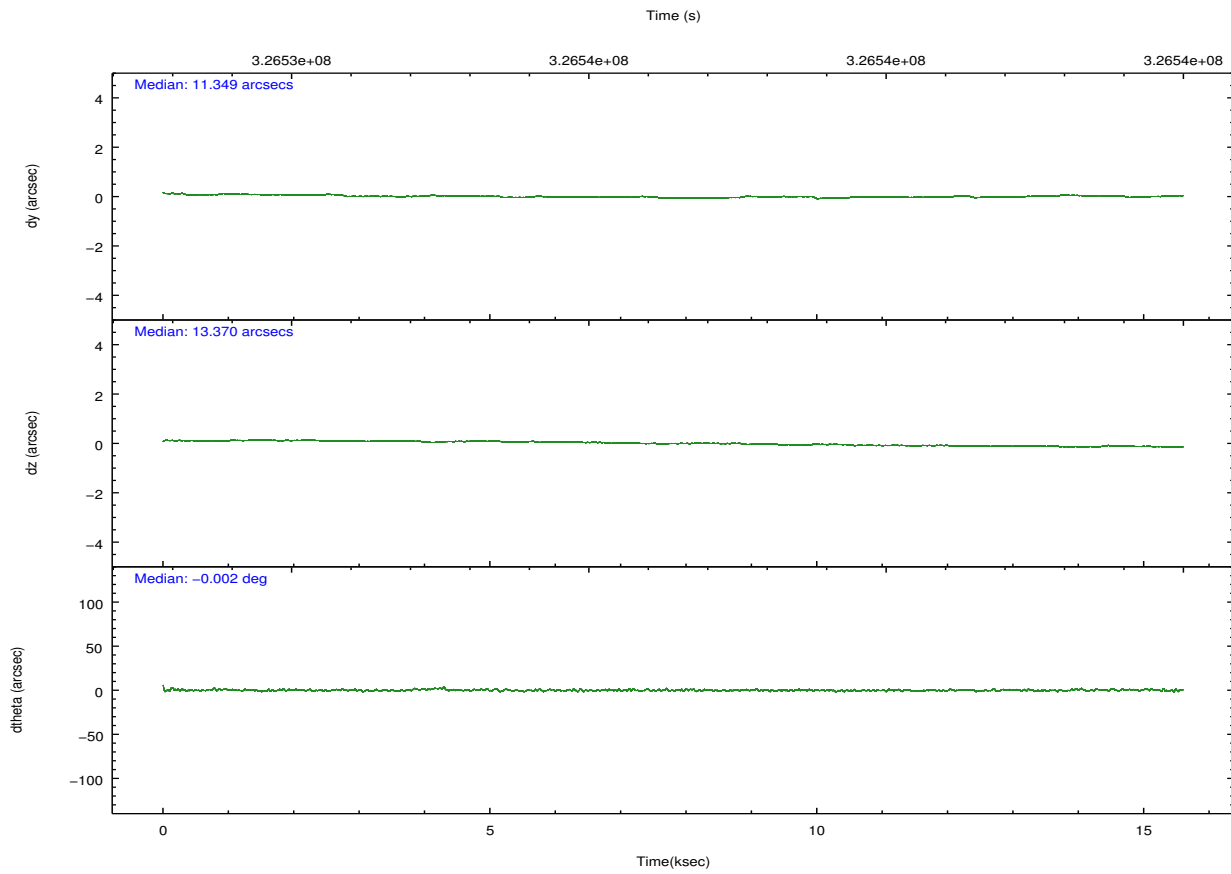
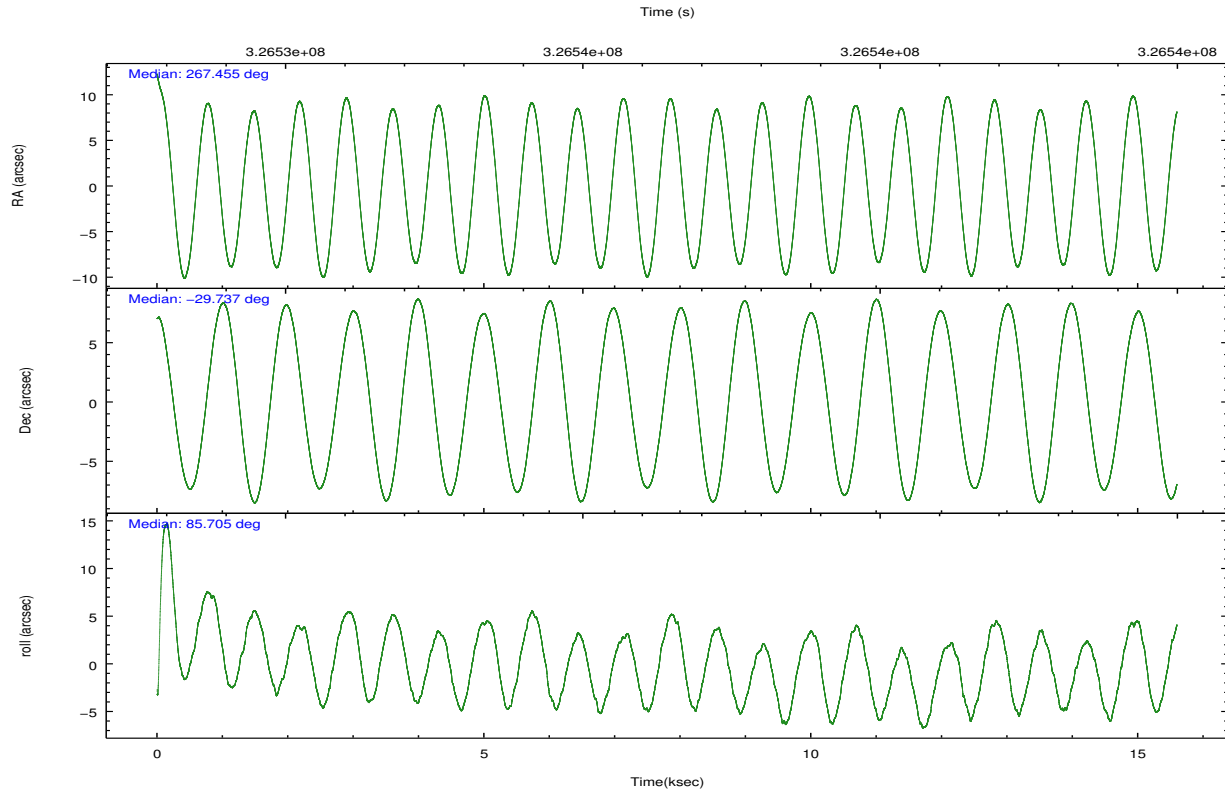
	ccd 0	ccd 1	ccd 2	ccd 3
grade 0 events	11364	9092	10177	9397
	8%	6%	7%	6%
grade 1 events	113	75	125	112
	0%	0%	0%	0%
grade 2 events	4430	4420	3852	3747
	3%	3%	2%	2%
grade 3 events	1854	1785	1663	1695
	1%	1%	1%	1%
grade 4 events	1685	1812	1734	1679
	1%	1%	1%	1%
grade 5 events	5969	6297	5730	6729
	4%	4%	4%	4%
grade 6 events	3151	3541	2872	3168
	2%	2%	2%	2%
grade 7 events	103393	107245	117028	111337
	78%	79%	81%	80%

## 2.2 Compared Parameters

Parameter	Planned	Actual	Parameter	Planned	Actual
Instrument	ACIS	ACIS	Obspar format version number	7	7
Detector	ACIS-0123	ACIS-0123	Obspar file type	PREDICTED	ACTUAL
Grating	NONE	NONE	Obspar update status	NONE	UPDATED
Data mode	VFAINT	VFAINT	Number of optional ACIS chips dropped	0	0
Observation mode	POINTING	POINTING	On-chip summing requested	N	N
[deg] Pointing RA	267.468428	267.454568524014	Subarray requested	NONE	NONE
[deg] Pointing Dec	-29.762017	-29.73730708523632	Alternating exposures requested	N	N
[deg] Pointing Roll	85.505836	85.70763731660877	[s] Primary exposure time	0.000000	3.1
[mm] SIM focus pos	-0.782348	-0.7809083437167272			
[mm] SIM defocus	0	0.001439871863259334			
[mm] SIM translation stage pos	-233.592463	-233.5874344608287			
[mm] SIM translation stage offset	0	-0.005018542100998502			
[s] Observation start time (MET)	326529209.184000	326528130.93714			
Observation start date	2008-05-07T06:32:24	2008-05-07T06:15:30			
[s] Observation end time (MET)	326544209.184000	326544397.17543			
Observation end date	2008-05-07T10:42:24	2008-05-07T10:46:37			
Read mode	TIMED	TIMED			

## 2.3 Aspect



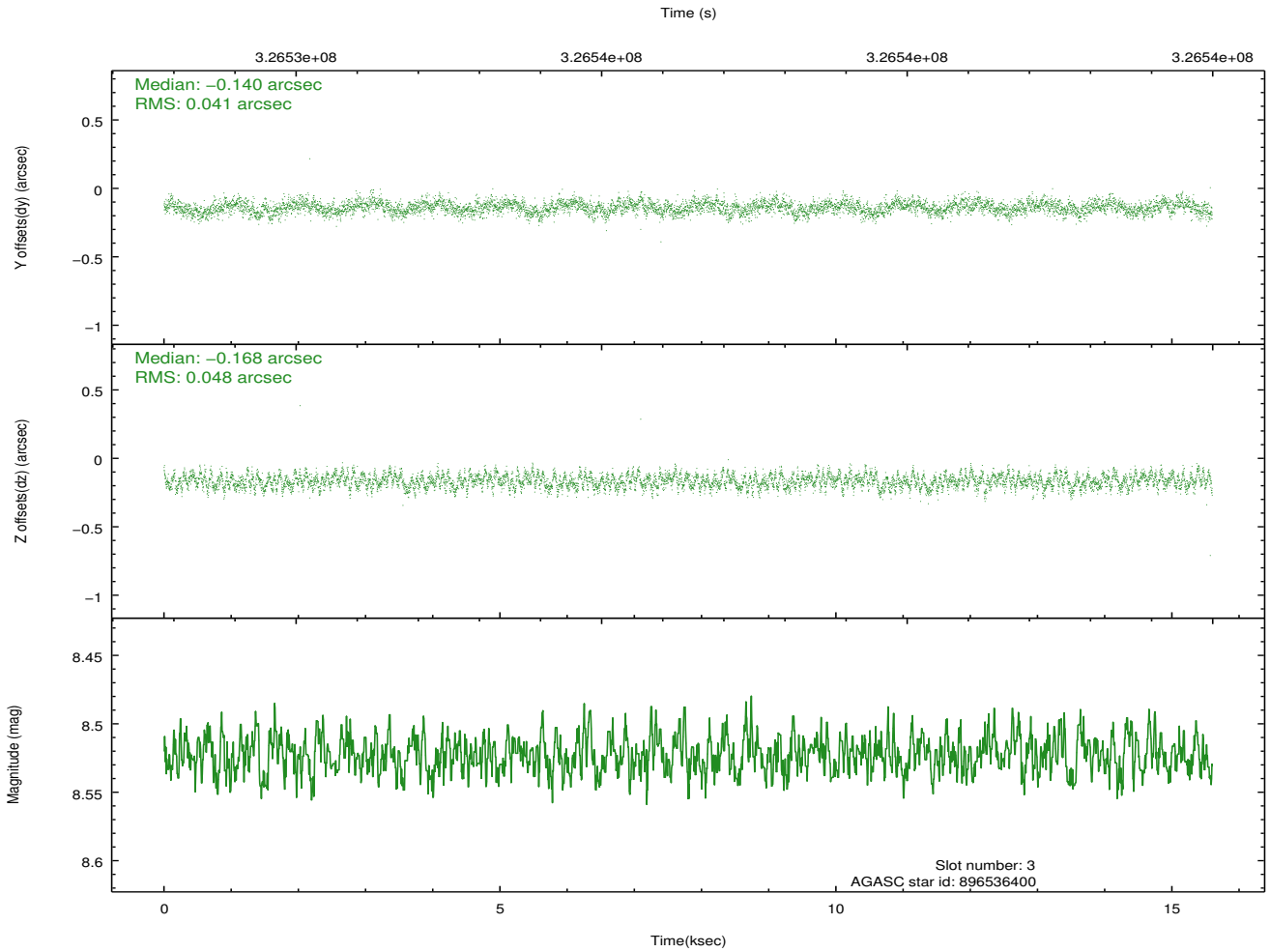
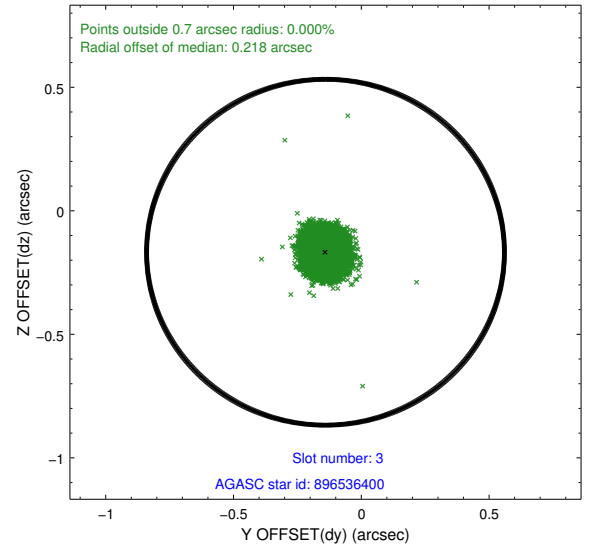
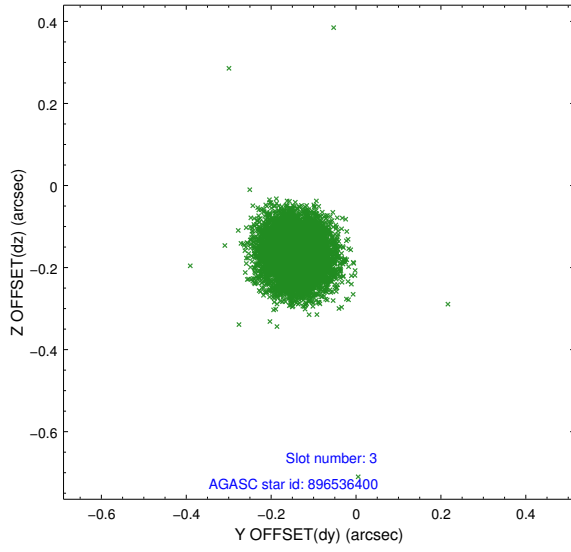


### Slot Statistics

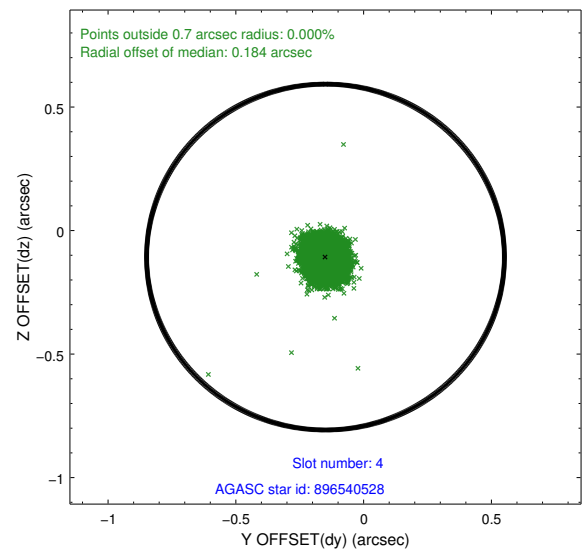
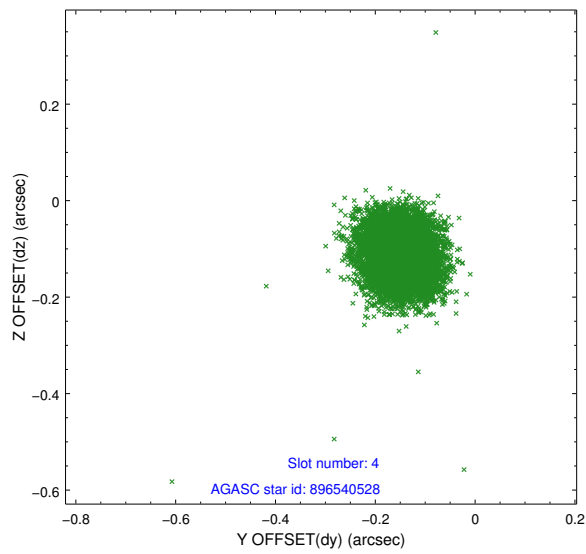
slot	status	id	mag	n_pts	med_dy	med_dz	dr1	dr2	ra	dec	mean_y	mean_z
0	FID	ACIS-I-2	6.92	3805	-0.152	-0.077	0.008	0.017	0.000000	0.000000	-766.12	-843.36
1	FID	ACIS-I-4	6.96	3805	0.084	0.085	0.008	0.013	0.000000	0.000000	2148.05	1062.82
2	FID	ACIS-I-6	7.01	3805	-0.032	0.055	0.010	0.017	0.000000	0.000000	394.45	1705.30
3	GUIDE	896536400	8.52	7606	-0.140	-0.168	0.066	0.105	267.359146	-29.438655	1133.63	432.78
4	GUIDE	896540528	8.24	7609	-0.149	-0.107	0.065	0.102	267.368305	-29.314773	1580.52	439.25
5	GUIDE	898248800	8.22	7606	0.050	0.213	0.058	0.096	267.977609	-29.931731	-487.50	-1631.47
6	GUIDE	966926496	8.10	7610	0.224	-0.072	0.061	0.098	267.109389	-30.299474	-2017.84	960.89
7	GUIDE	896542048	9.22	7601	0.015	0.139	0.088	0.148	267.742937	-29.132026	2327.68	-682.48

## 2.4 Star Slots

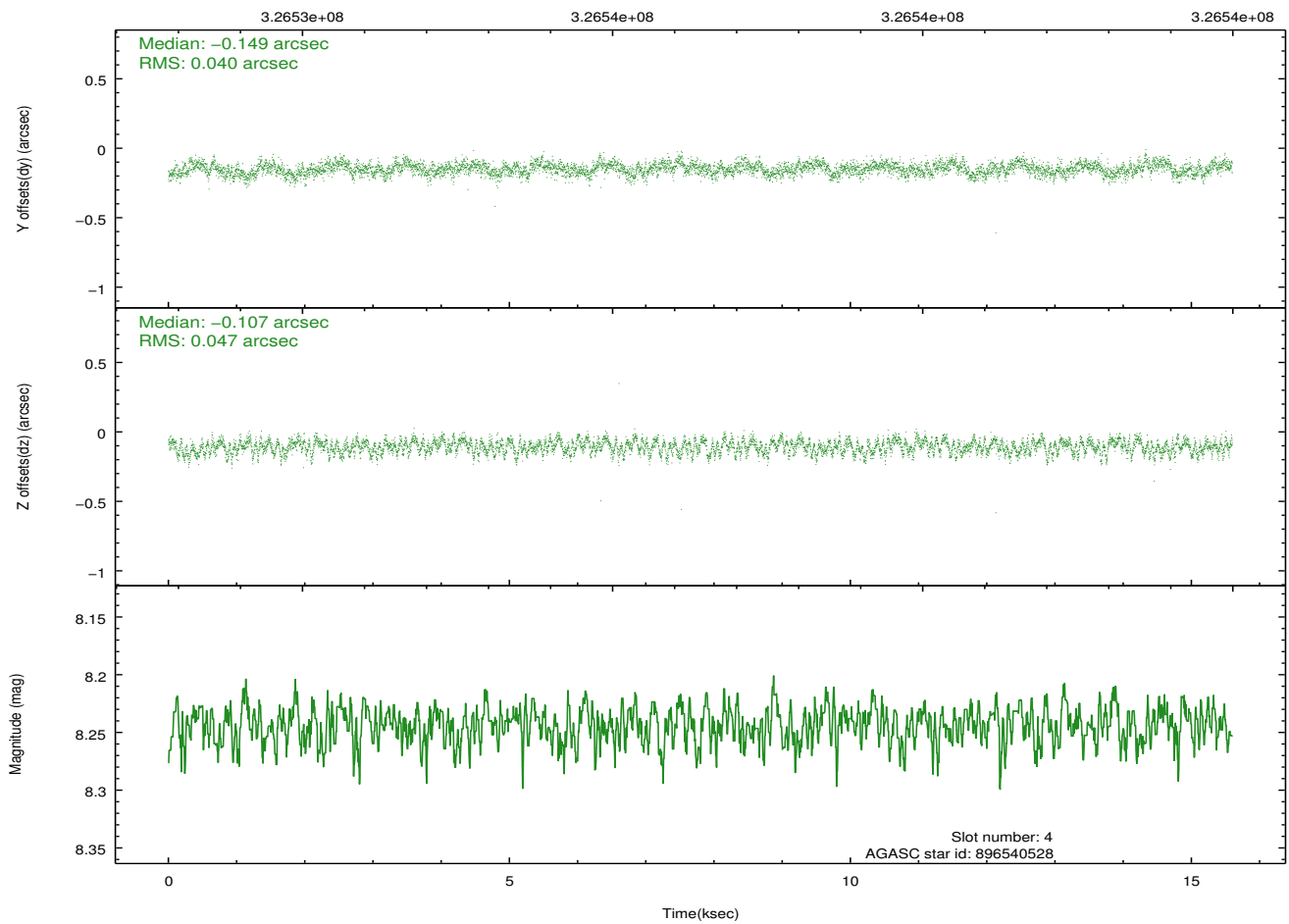
### 2.4.1 Slot 3



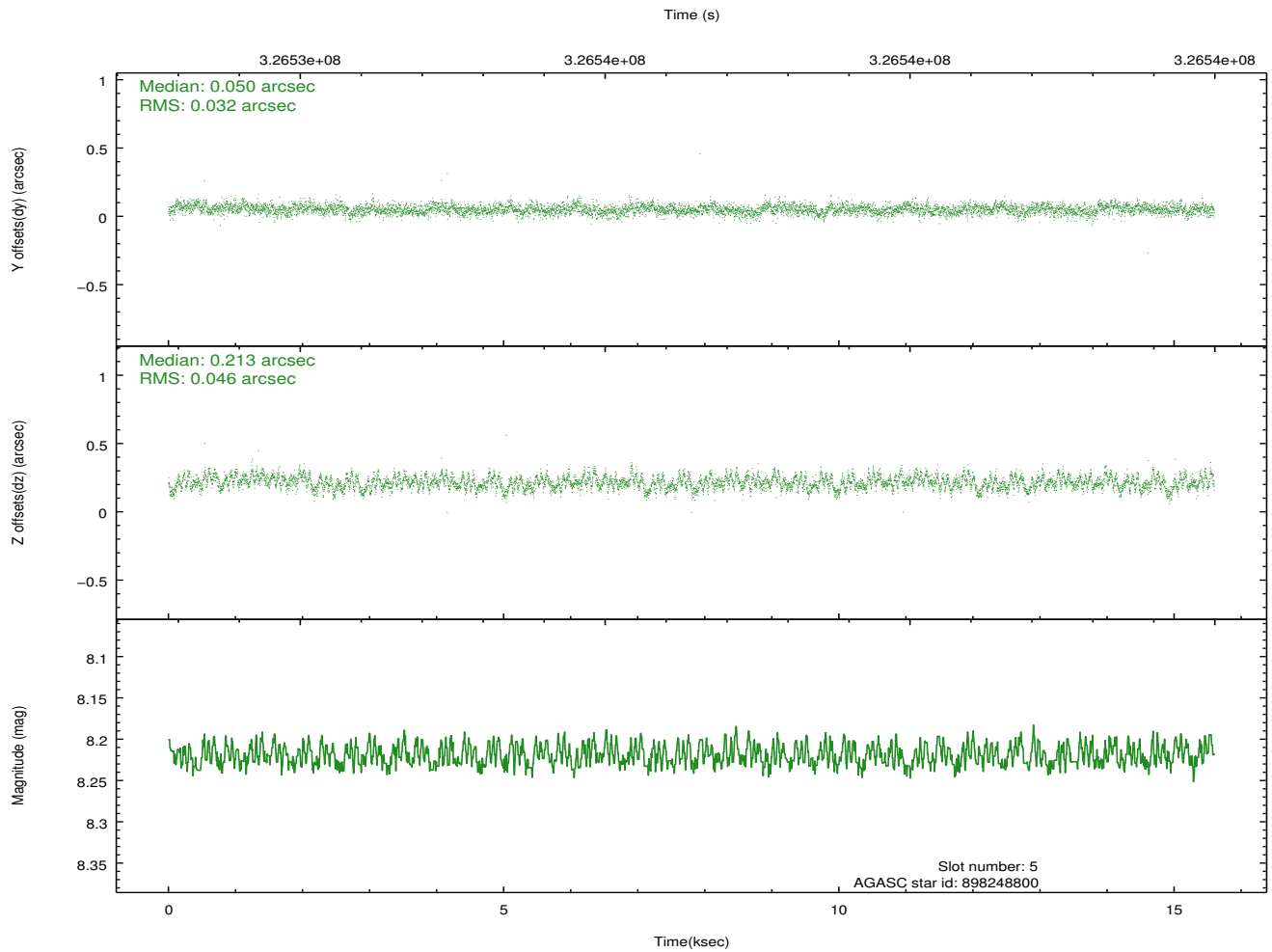
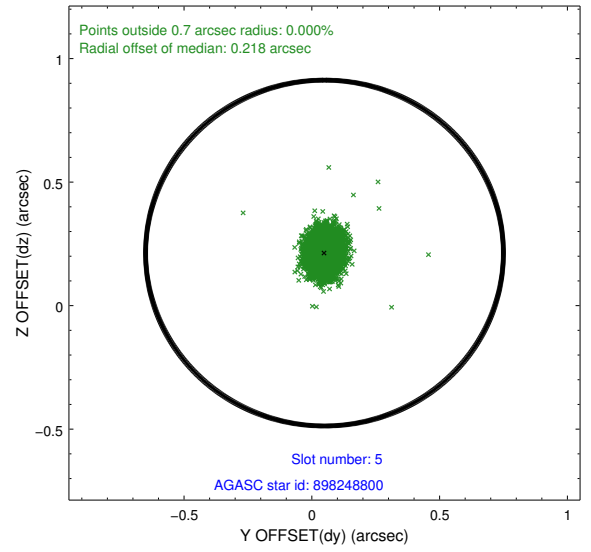
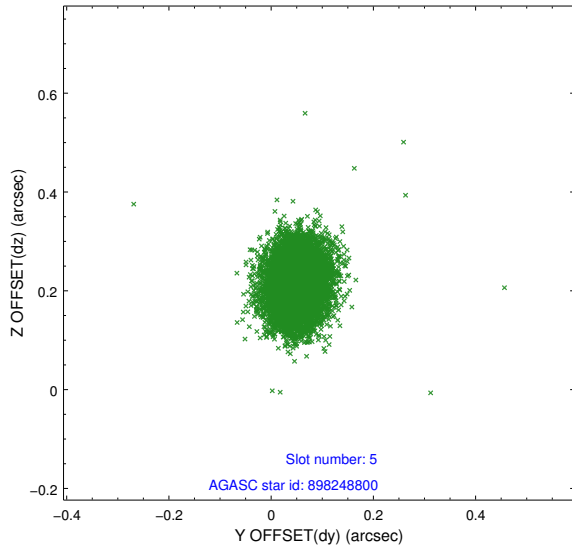
## 2.4.2 Slot 4



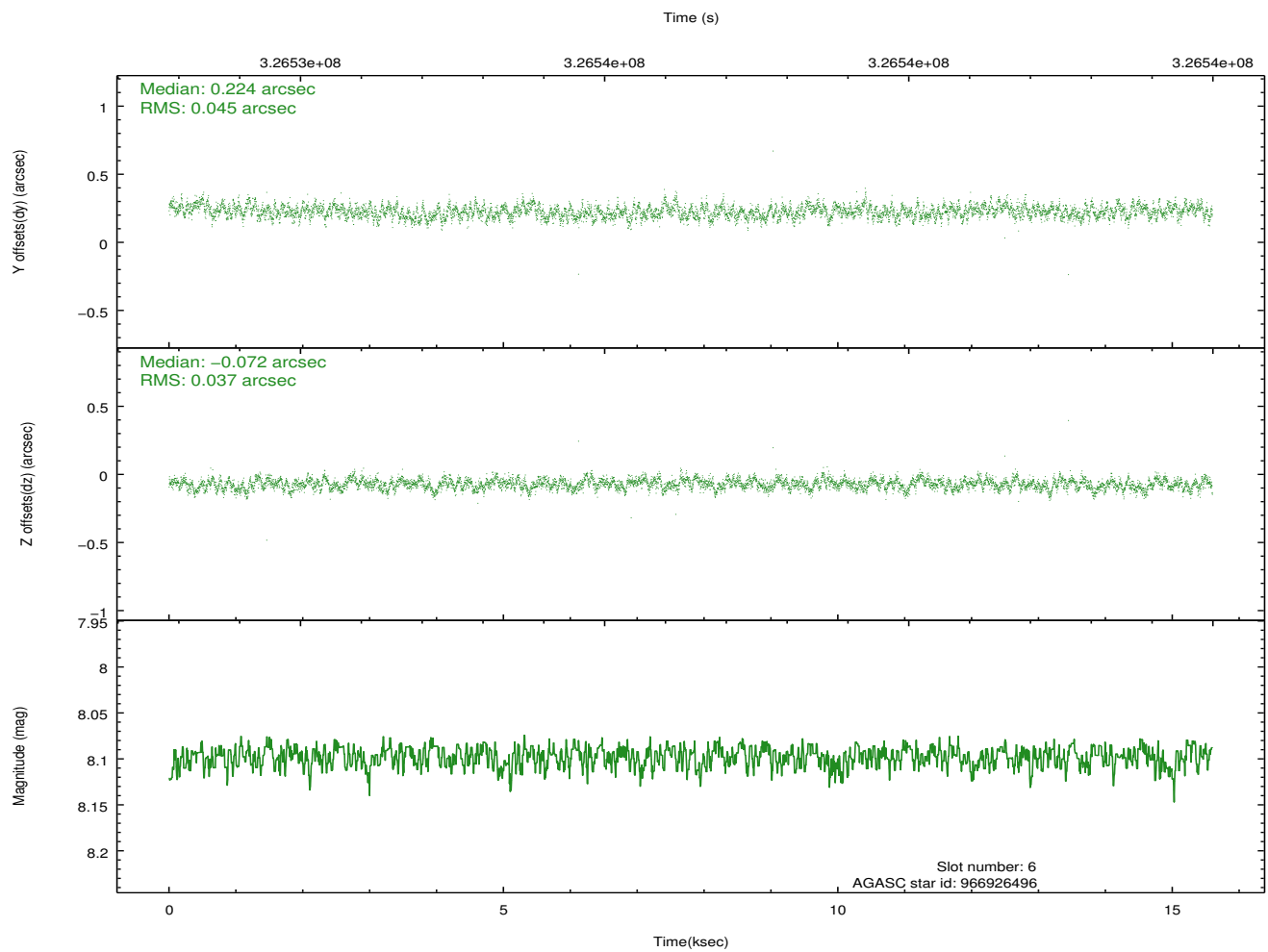
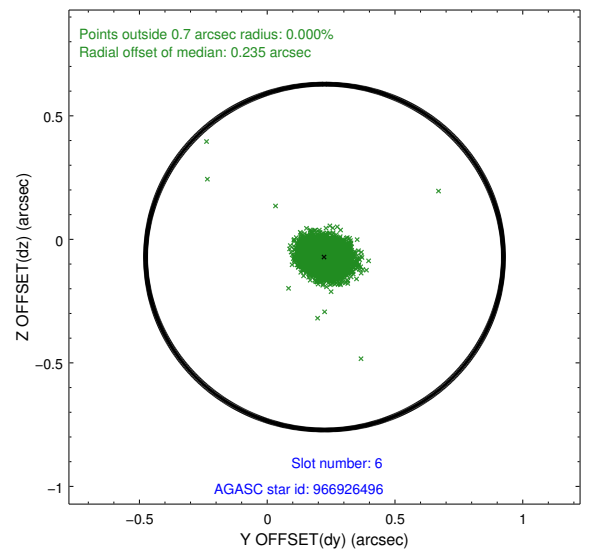
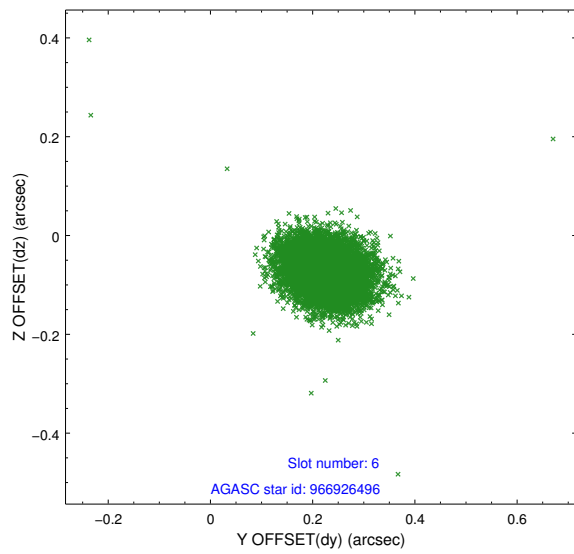
Time (s)



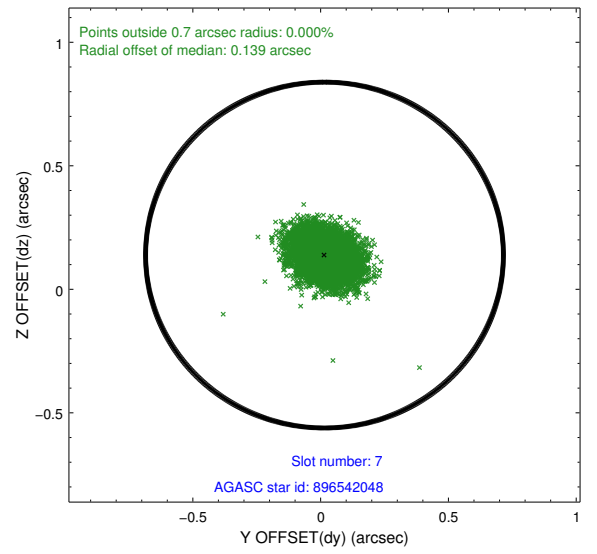
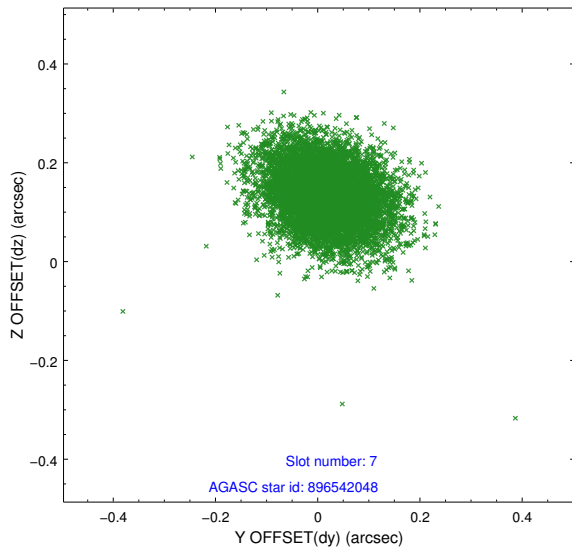
### 2.4.3 Slot 5



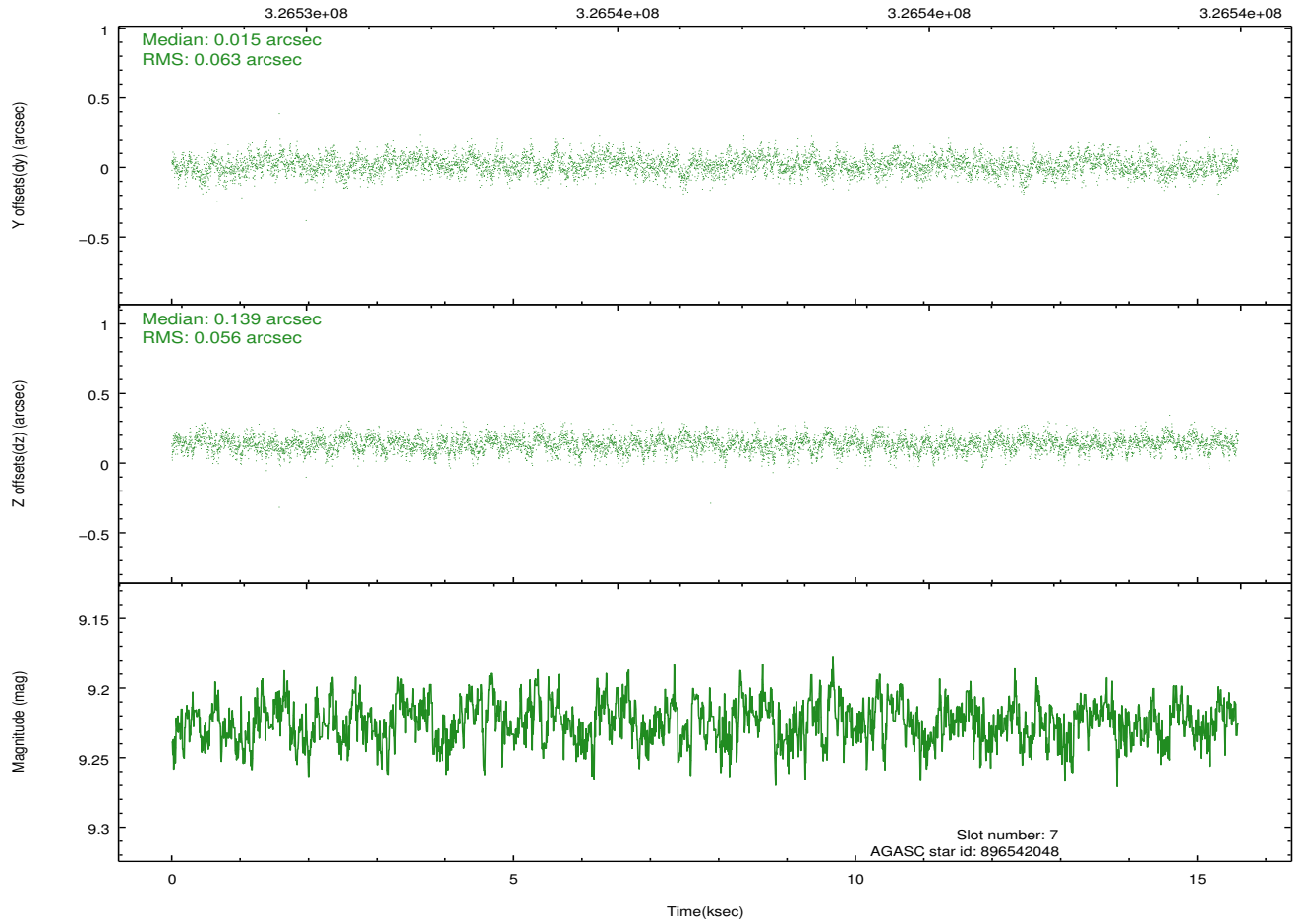
## 2.4.4 Slot 6



### 2.4.5 Slot 7

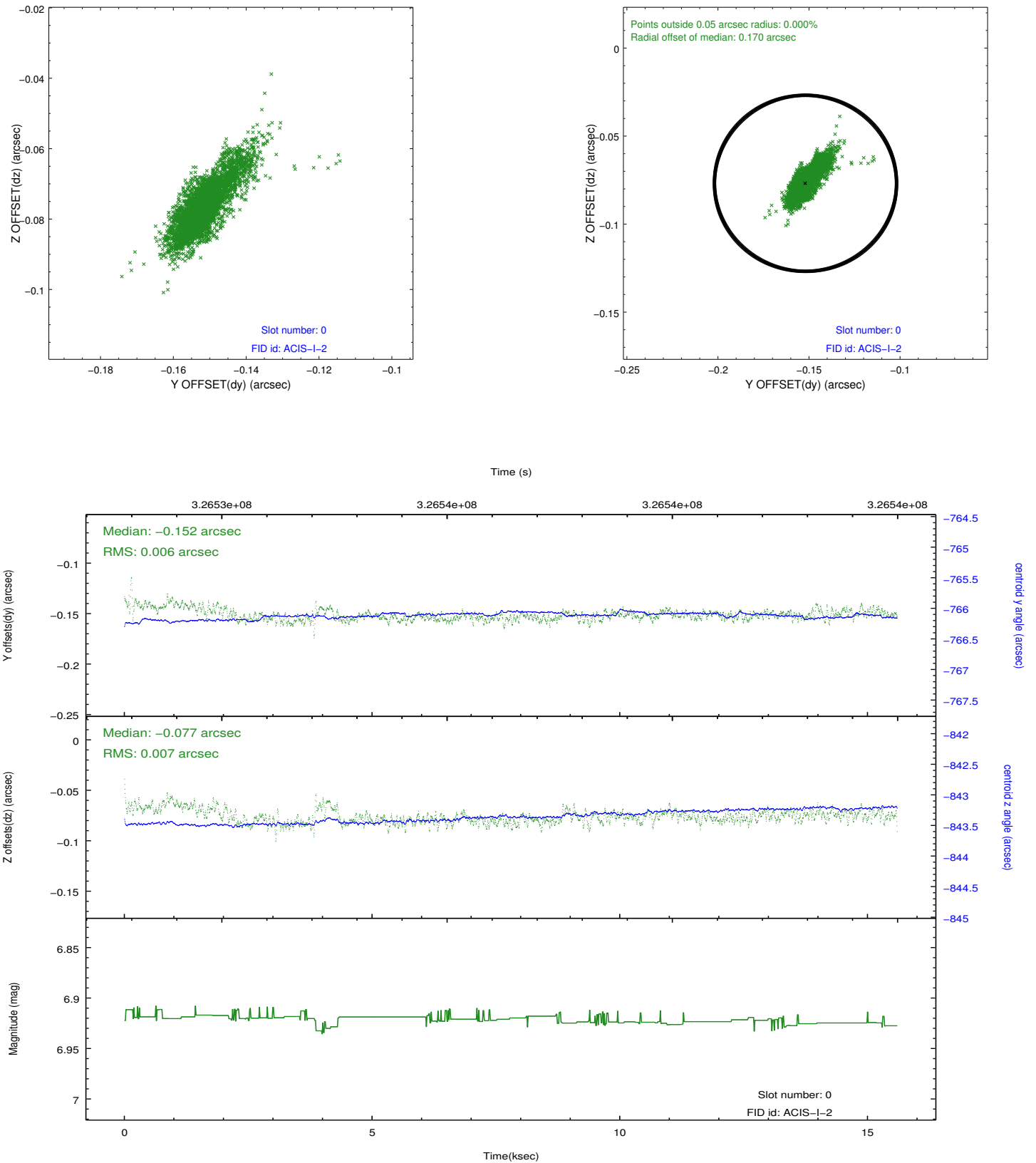


Time (s)

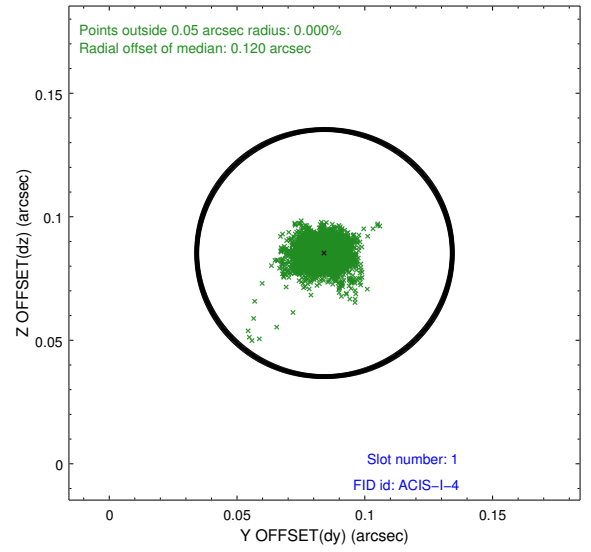
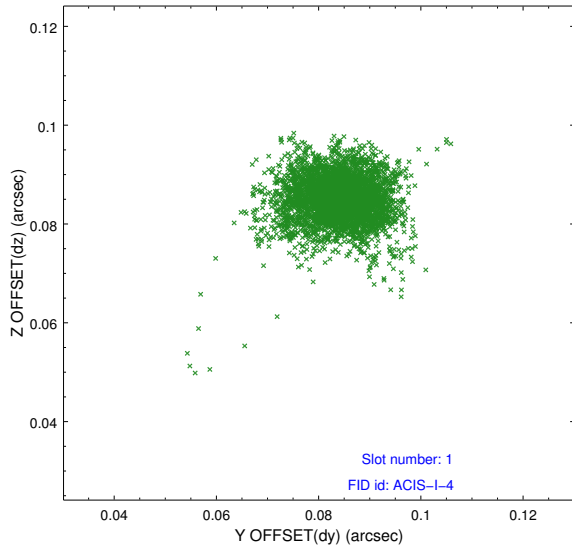


## 2.5 FID Slots

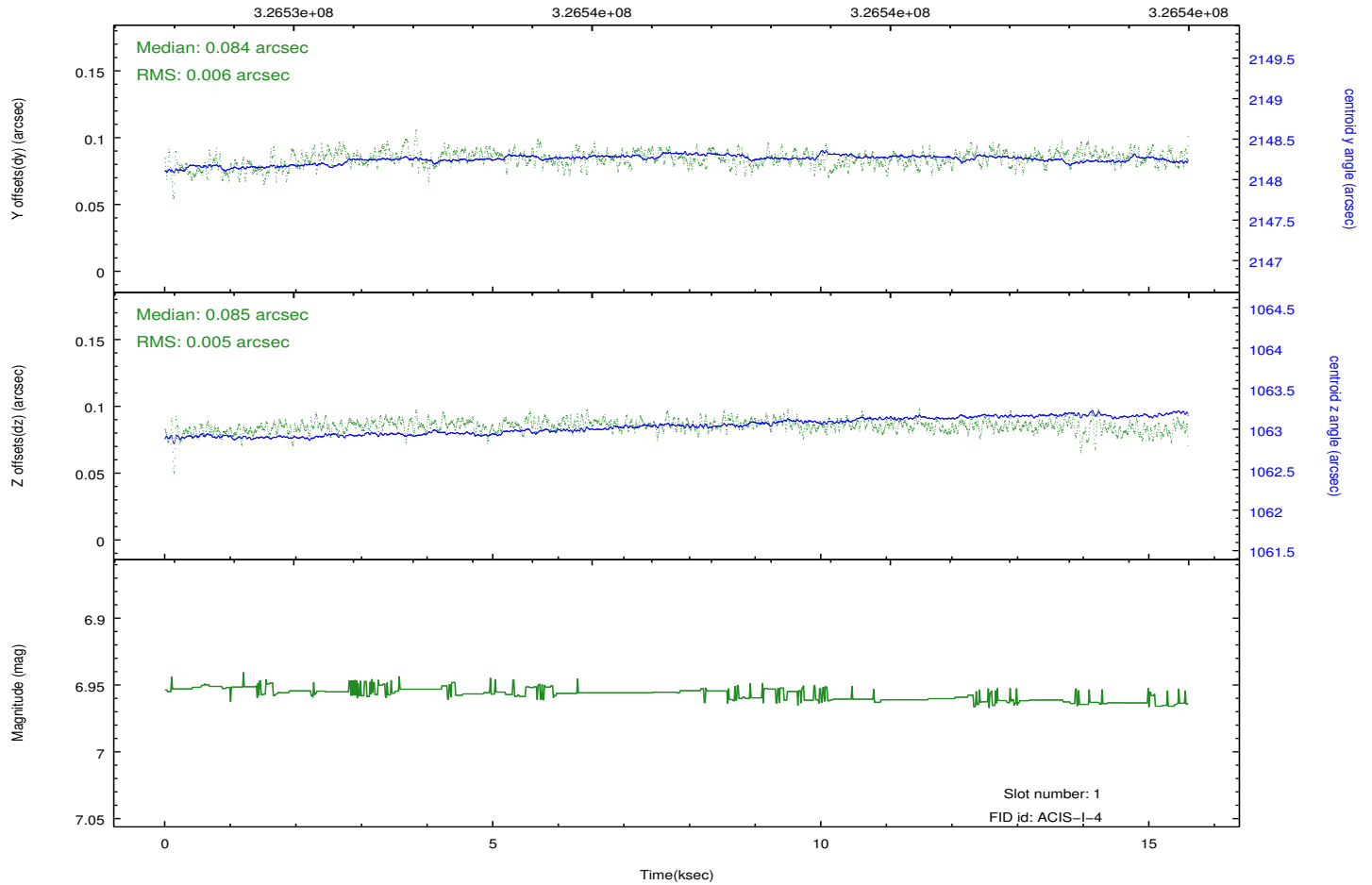
### 2.5.1 Slot 0



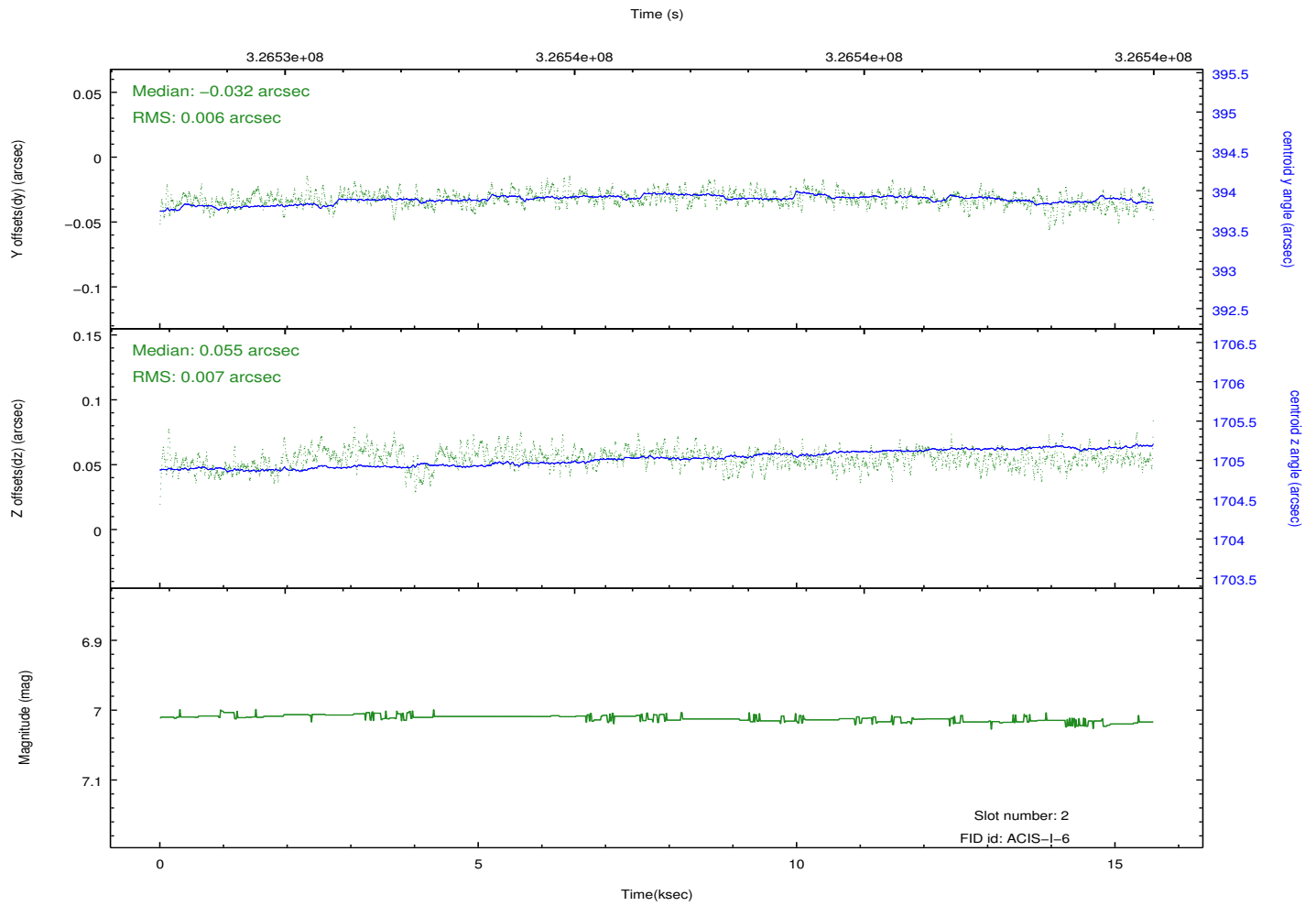
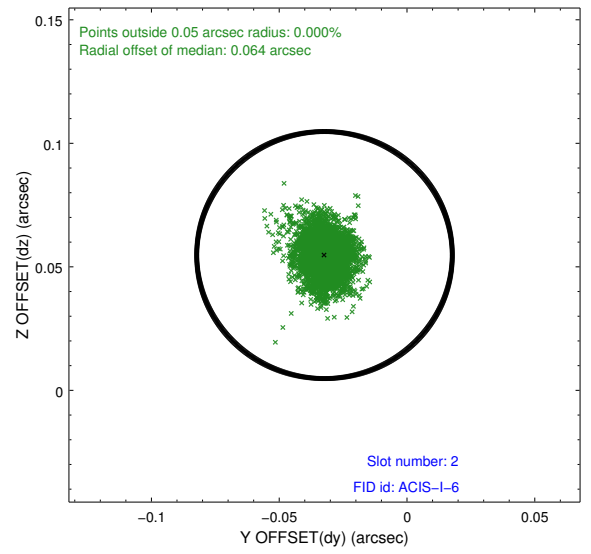
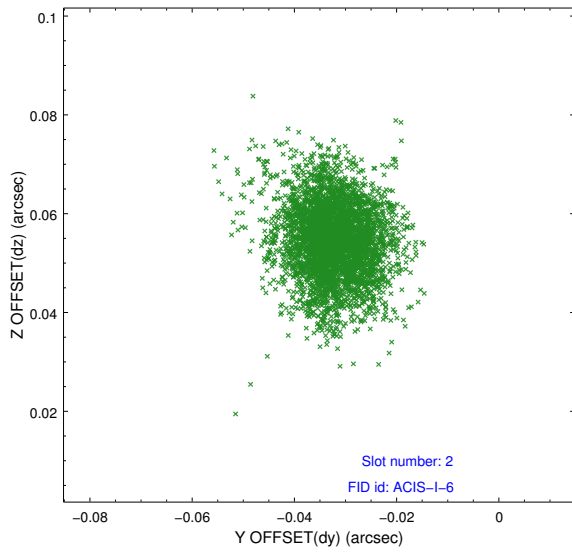
## 2.5.2 Slot 1



Time (s)



### 2.5.3 Slot 2



# A Summary

## A.1 Status

V&V Scientist	Beth Sundheim
V&V Date (YYYY-MM-DD)	2012.05.16
V&V Edition	1
V&V Disposition and Status	OK
V&V Charge Time	15.0567001

## A.2 Comments

Joint proposal with NOAO.