

V&V Reference Report

L2 ASCDS Version : 8.4.4

Observation 9883 - L2 Version 2
Chandra X-Ray Center

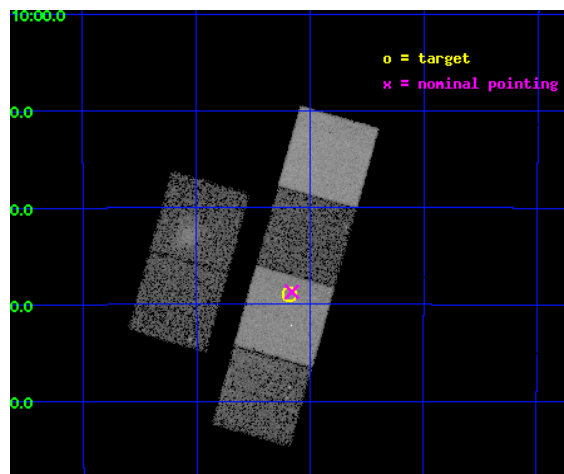
L2 Processing Date : May 17 2012

Contents

1	Front	2
2	OBI	3
2.1	OBI	3
2.1.1	Images	3
2.1.2	Bias	3
2.1.3	Parameters	4
2.1.4	Events	4
2.2	Compared Parameters	5
2.3	Aspect	6
2.4	Star Slots	9
2.4.1	Slot 3	9
2.4.2	Slot 4	10
2.4.3	Slot 5	11
2.4.4	Slot 6	12
2.4.5	Slot 7	13
2.5	FID Slots	14
2.5.1	Slot 0	14
2.5.2	Slot 1	15
2.5.3	Slot 2	16
A	Summary	17
A.1	Status	17
A.2	Comments	17

1 Front

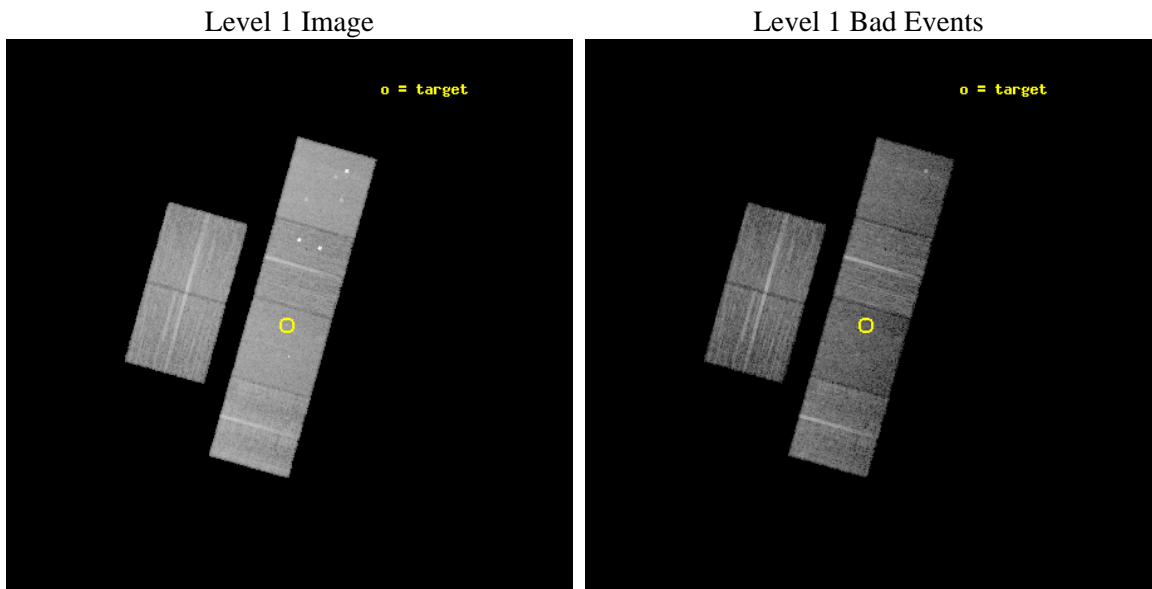
seq_num	400934	Sequence number
obs_id	9883	Observation id
title	Locating the Ultraluminous Supersoft X-ray Source in NGC300	Propos
observer	Prof. Albert Kong	Principal investigator
object	XMMU J005510.7-373855	Source name
dtcycle	0	
cycle	P	events from which exps? Prim/Second/Both
ra_targ	13.794583	Observer's specified target RA [deg]
dec_targ	-37.648611	Observer's specified target Dec [deg]
ra_nom	13.790138897826	Nominal RA [deg]
dec_nom	-37.645347943061	Nominal Dec [deg]
roll_nom	105.69125694773	Nominal Roll [deg]
revision	2	Processing version of data
ontime	10198.399962068	Sum of GTIs [s]
livetime	10069.261681009	Livetime [s]
ontime2	10198.399962068	Sum of GTIs [s]
ontime3	10198.399962068	Sum of GTIs [s]
ontime5	10198.399962068	Sum of GTIs [s]
ontime6	10198.399962068	Sum of GTIs [s]
ontime7	10198.399962068	Sum of GTIs [s]
ontime8	10198.399962068	Sum of GTIs [s]
l2events	129493	Number of level 2 events



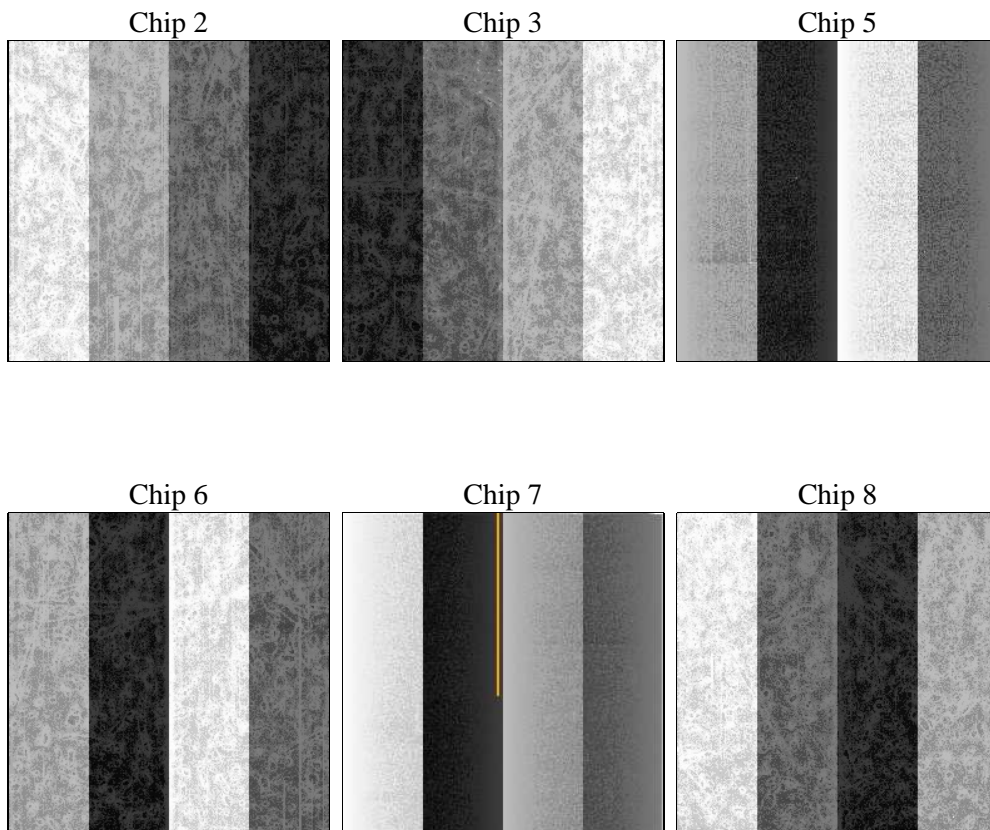
2 OBI

2.1 OBI

2.1.1 Images



2.1.2 Bias



2.1.3 Parameters

obi_num	0	Obi number	sched_exp_time	10058.074000	[s] Scheduled observation exposure time
ascdsver	8.4.4	Processing system revision	ontime	10198.399962068	Sum of GTIs [s]
caldbver	4.4.9	 	ontime2	10198.399962068	Sum of GTIs [s]
date	2012-05-17T16:10:46	Date and time of file creation	ontime3	10198.399962068	Sum of GTIs [s]
revision	2	Processing version of data	ontime5	10198.399962068	Sum of GTIs [s]
			ontime6	10198.399962068	Sum of GTIs [s]
			ontime7	10198.399962068	Sum of GTIs [s]
			ontime8	10198.399962068	Sum of GTIs [s]
			l1events	667807	Number of level 1 events

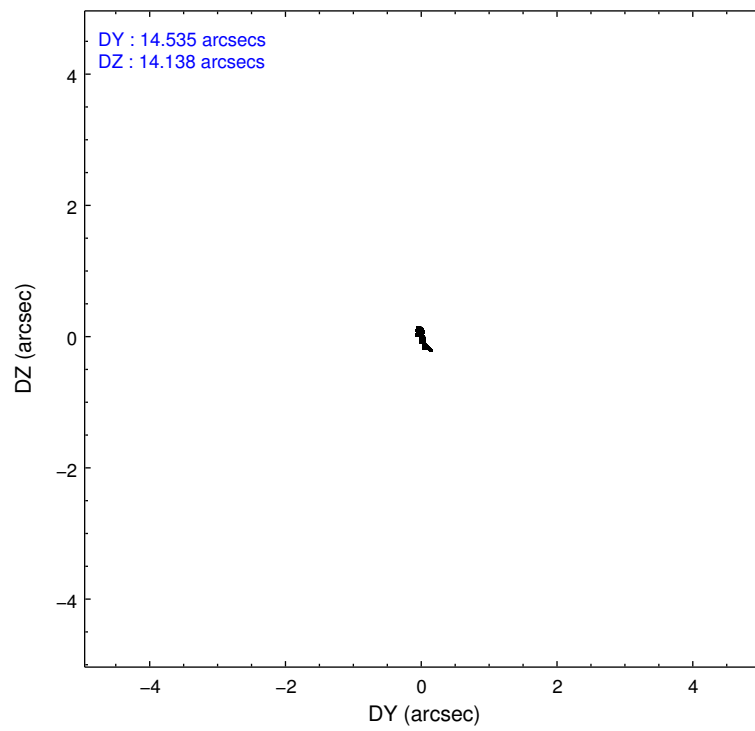
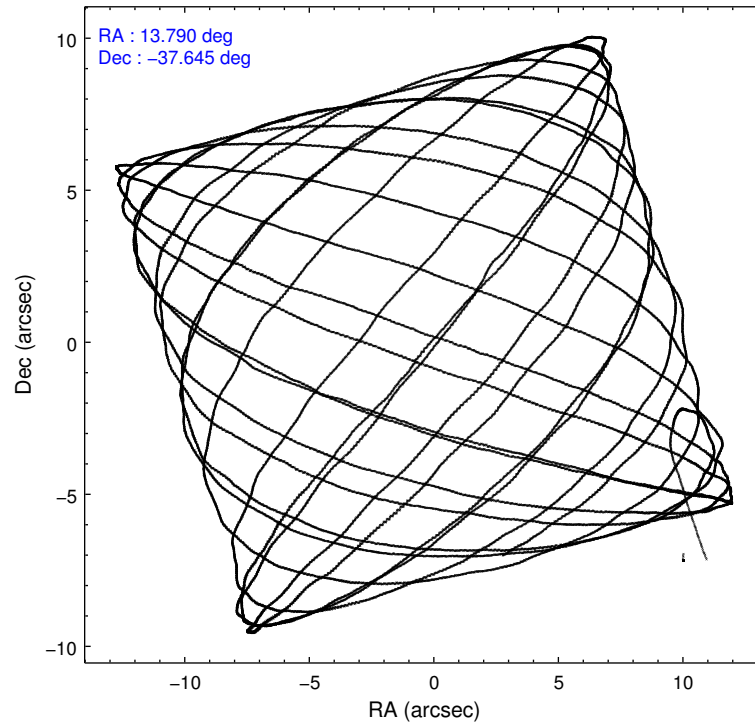
2.1.4 Events

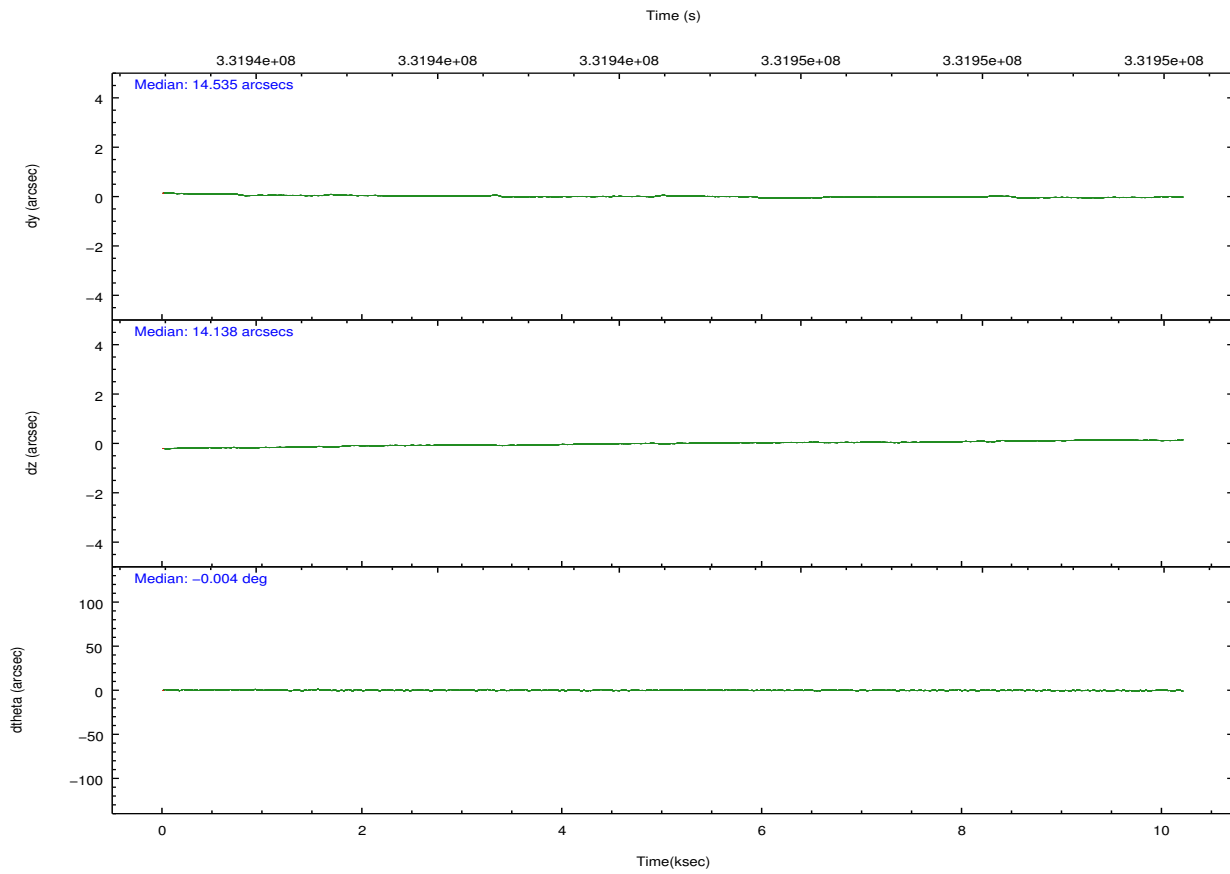
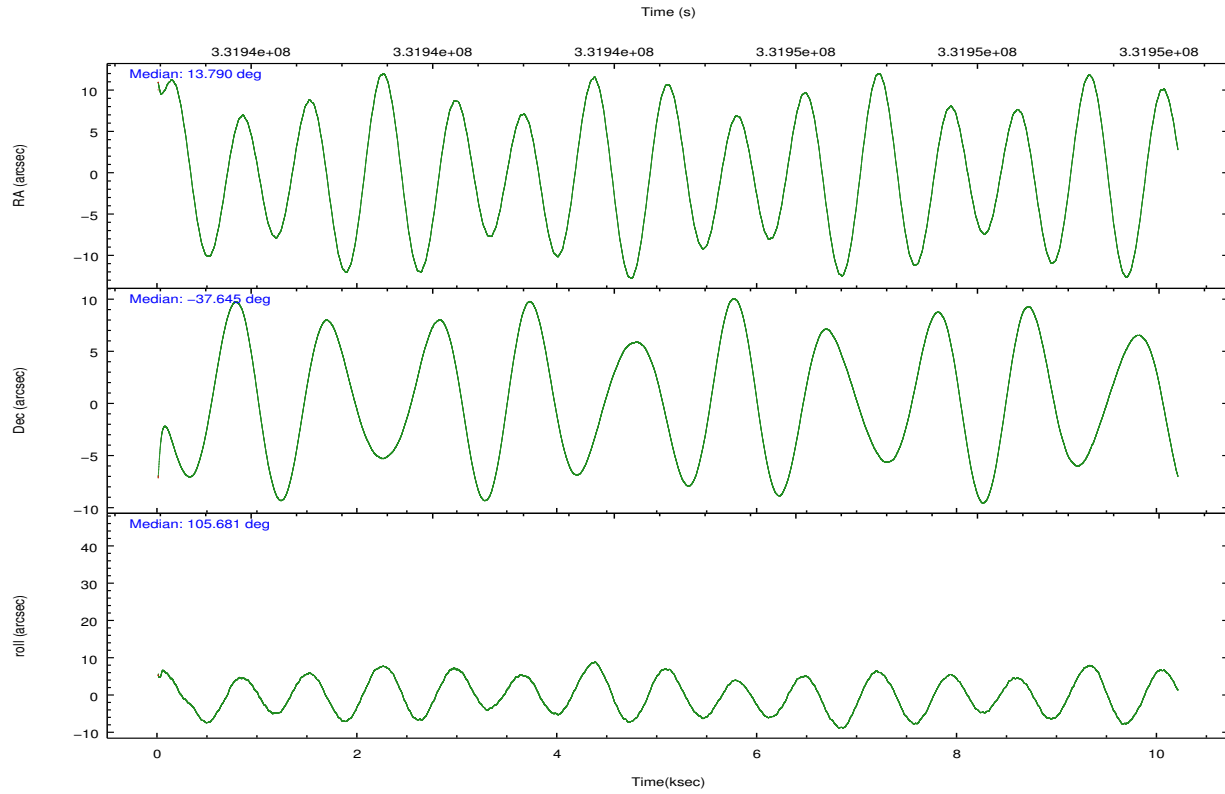
	ccd 2	ccd 3	ccd 5	ccd 6	ccd 7	ccd 8		ccd 2	ccd 3	ccd 5	ccd 6	ccd 7	ccd 8
level 1 events	105598	93308	135469	103410	109541	120481	grade 0 events	5205	3124	6669	10281	5015	8810
rejected events	94971	85634	75949	88838	65540	95056		4%	3%	4%	9%	4%	7%
rejected %	89%	91%	56%	85%	59%	78%	grade 1 events	55	50	631	95	139	86
								0%	0%	0%	0%	0%	0%
							grade 2 events	2631	2023	21630	2267	10421	6876
								2%	2%	15%	2%	9%	5%
							grade 3 events	1057	1007	2809	1039	4598	3141
								1%	1%	2%	1%	4%	2%
							grade 4 events	1098	1002	2625	1049	4590	2850
								1%	1%	1%	1%	4%	2%
							grade 5 events	3241	3796	10543	4068	11467	5794
								3%	4%	7%	3%	10%	4%
							grade 6 events	1895	1709	34721	2134	25783	7852
								1%	1%	25%	2%	23%	6%
							grade 7 events	90416	80597	55841	82477	47528	85072
								85%	86%	41%	79%	43%	70%

2.2 Compared Parameters

Parameter	Planned	Actual	Parameter	Planned	Actual
Instrument	ACIS	ACIS	Obspar format version number	7	7
Detector	ACIS-235678	ACIS-235678	Obspar file type	PREDICTED	ACTUAL
Grating	NONE	NONE	Obspar update status	NONE	UPDATED
Data mode	VFAINT	VFAINT	CCD I0 on	N	N
Observation mode	POINTING	POINTING	CCD I1 on	N	N
[deg] Pointing RA	13.815131	13.79013889782584	CCD I2 on	O1	Y
[deg] Pointing Dec	-37.664152	-37.64534794306098	CCD I3 on	O2	Y
[deg] Pointing Roll	105.549899	105.6912569477257	CCD S0 on	N	N
[mm] SIM focus pos	-0.684267	-0.6828225247311905	CCD S1 on	Y	Y
[mm] SIM defocus	0	0.001444936568705701	CCD S2 on	Y	Y
[mm] SIM translation stage pos	-190.132523	-190.1400660498719	CCD S3 on	Y	Y
[mm] SIM translation stage offset	0	0.00754346686406393	CCD S4 on	O3	Y
[s] Observation start time (MET)	331939645.184000	331937824.95139	CCD S5 on	N	N
Observation start date	2008-07-08T21:26:20	2008-07-08T20:57:04	Number of optional ACIS chips dropped	0	0
[s] Observation end time (MET)	331949703.184000	331949918.41448	On-chip summing requested	N	N
Observation end date	2008-07-09T00:13:58	2008-07-09T00:18:38	Subarray requested	NONE	NONE
Read mode	TIMED	TIMED	Alternating exposures requested	N	N
			[s] Primary exposure time	0.000000	3.2

2.3 Aspect



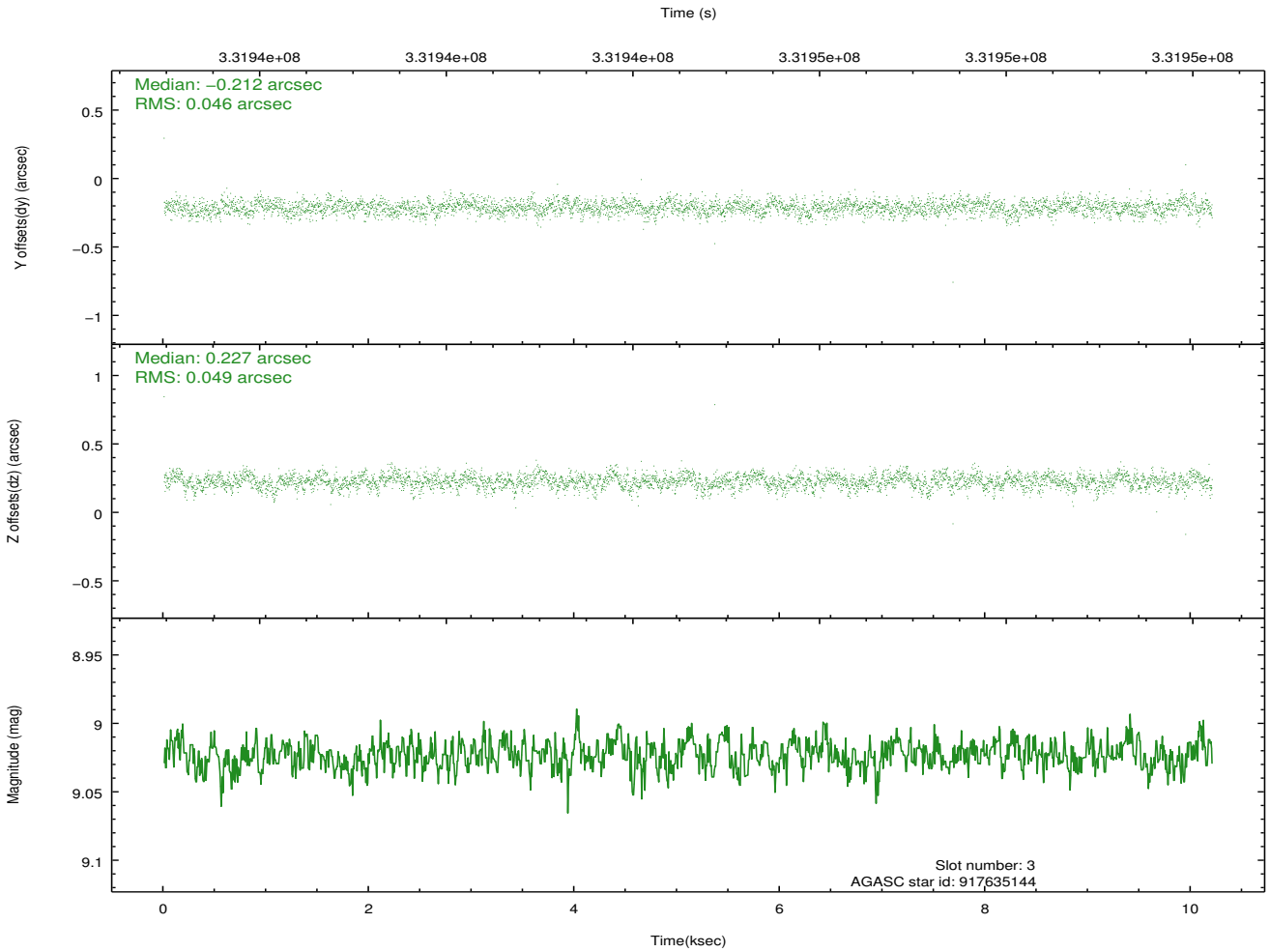
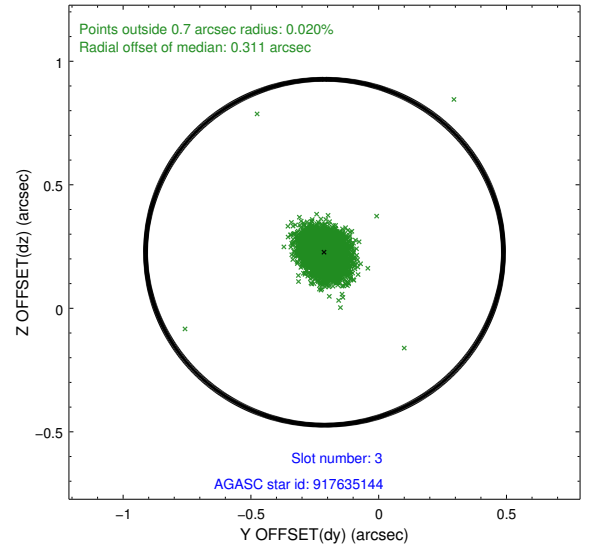
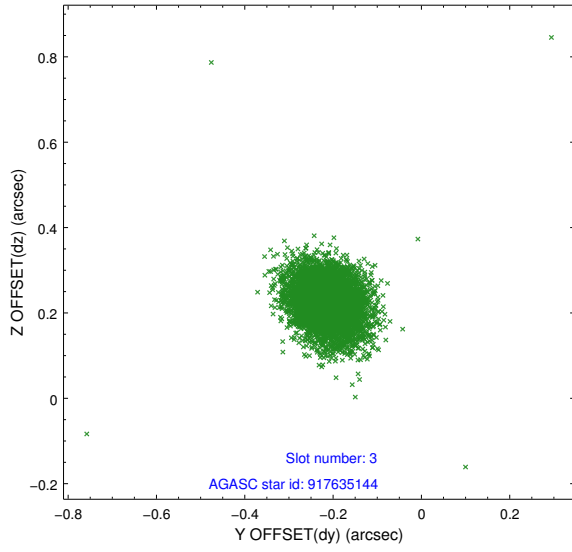


Slot Statistics

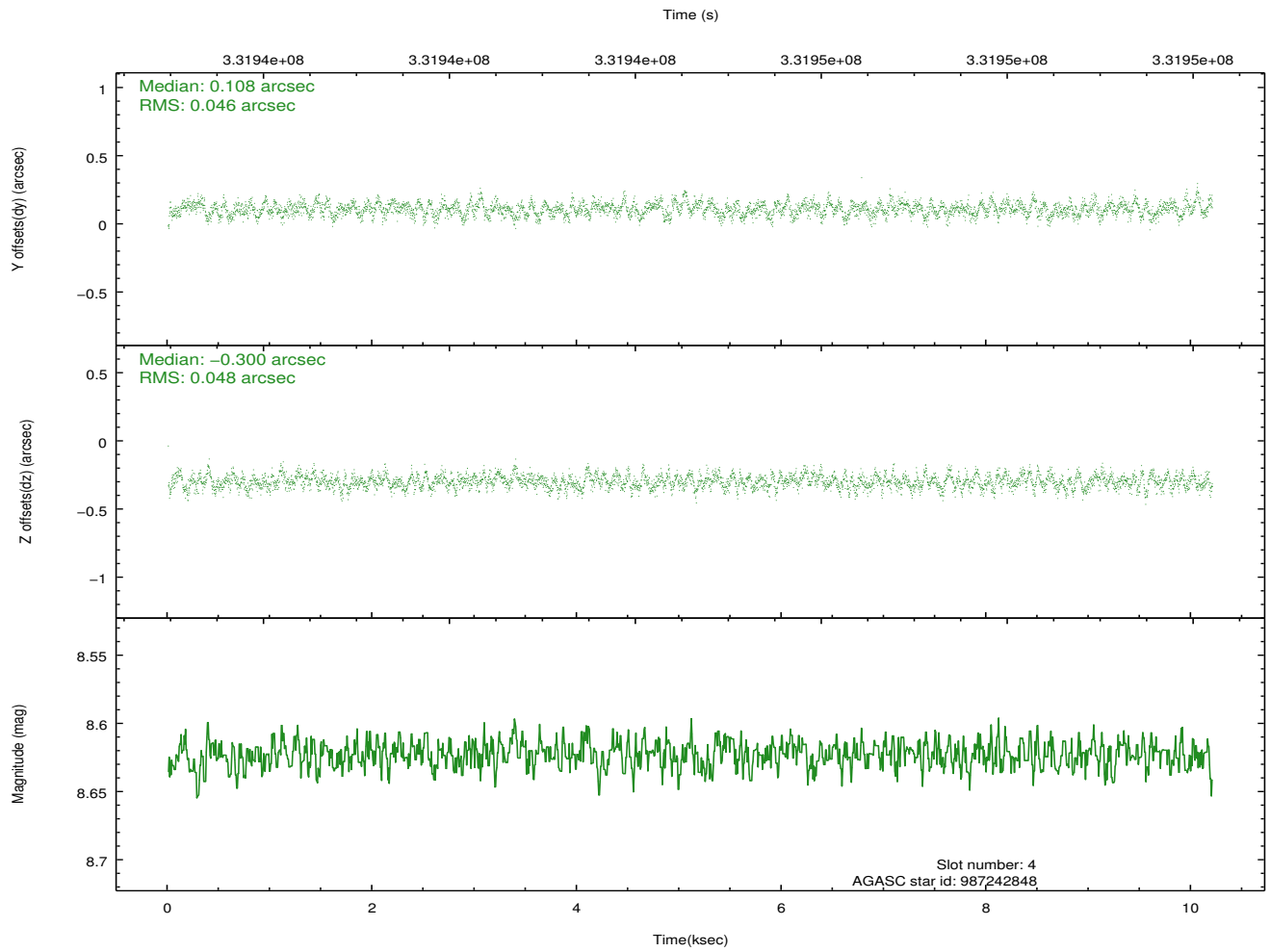
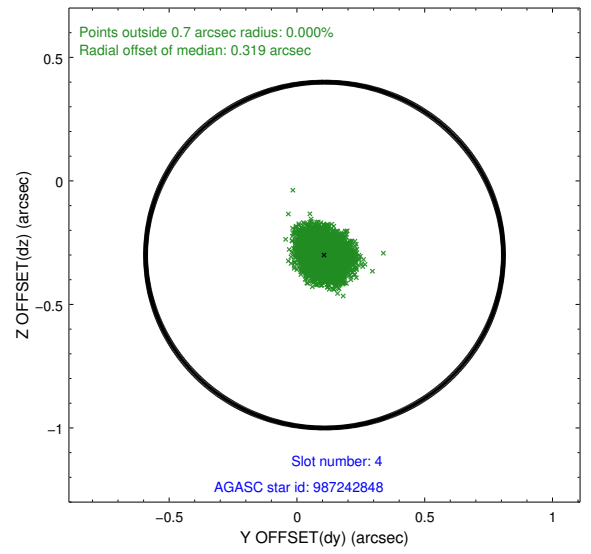
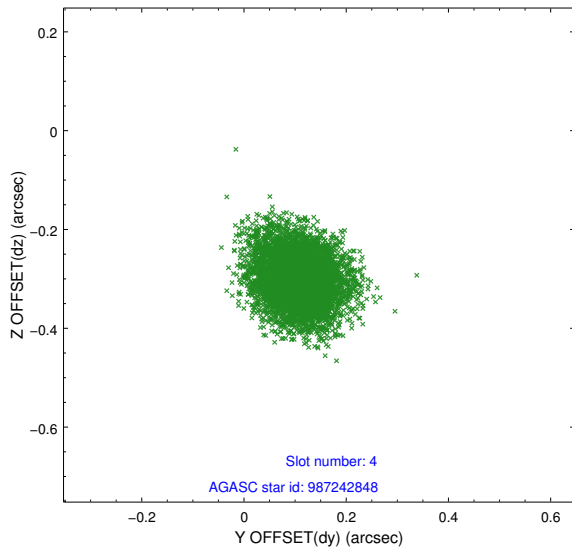
slot	status	id	mag	n_pts	med_dy	med_dz	dr1	dr2	ra	dec	mean_y	mean_z
0	FID	ACIS-S-2	6.96	2489	-0.081	-0.058	0.007	0.011	0.000000	0.000000	-767.58	-1735.54
1	FID	ACIS-S-4	7.04	2489	0.204	0.055	0.008	0.014	0.000000	0.000000	2145.75	172.52
2	FID	ACIS-S-5	7.07	2488	-0.155	0.012	0.008	0.012	0.000000	0.000000	-1819.83	166.74
3	GUIDE	917635144	9.02	4976	-0.212	0.227	0.068	0.113	14.182427	-37.216967	1266.88	-1444.68
4	GUIDE	987242848	8.62	4975	0.108	-0.300	0.072	0.114	13.175530	-38.138116	-1164.74	2203.27
5	GUIDE	987366320	8.80	4975	0.154	-0.035	0.061	0.101	13.580534	-38.230952	-1788.70	1186.92
6	GUIDE	987366712	8.55	4910	0.034	-0.039	0.063	0.103	13.414846	-37.970472	-760.71	1390.97
7	GUIDE	987367984	8.69	4975	-0.083	0.150	0.076	0.126	13.861833	-37.523988	449.28	-263.40

2.4 Star Slots

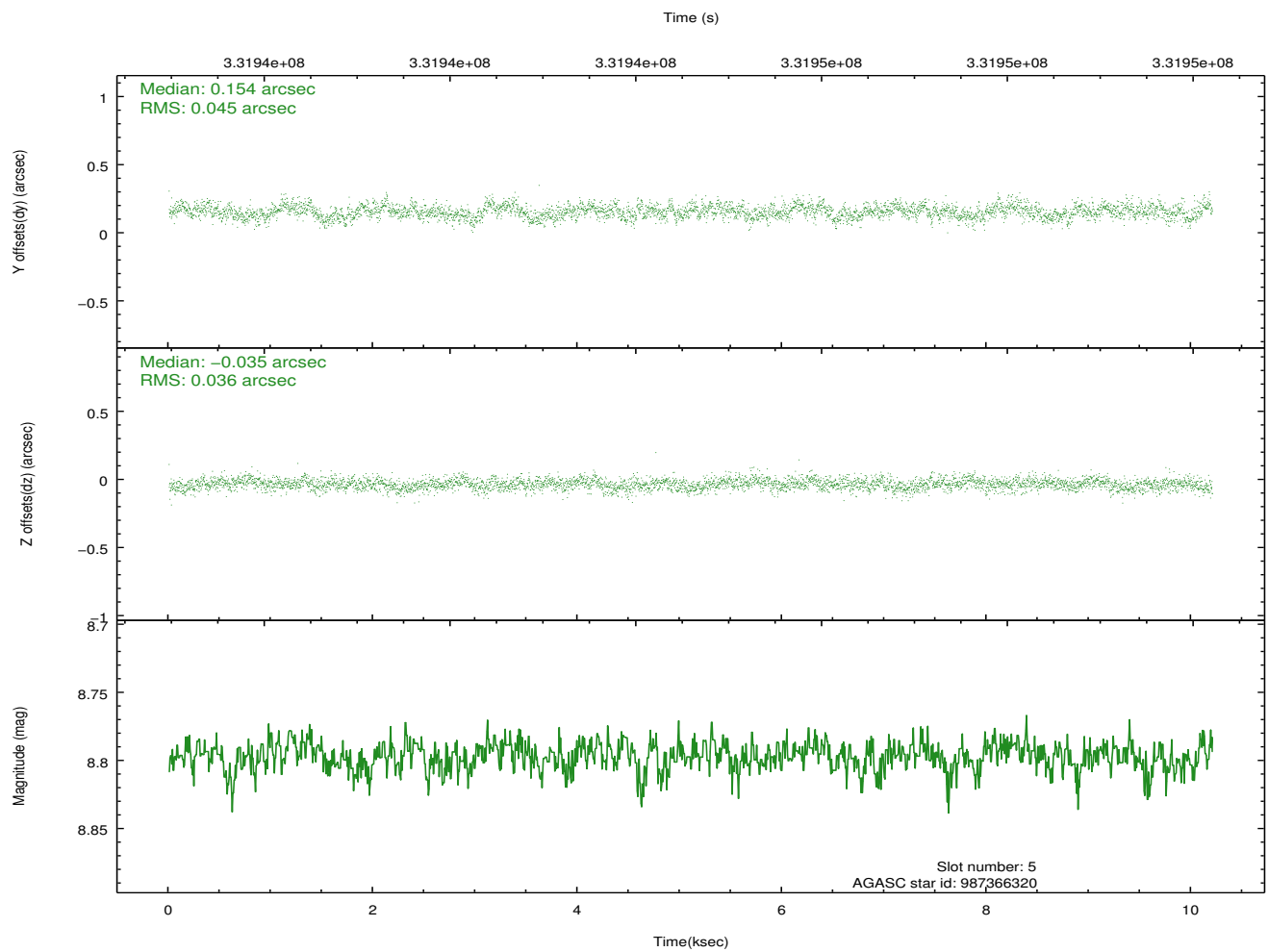
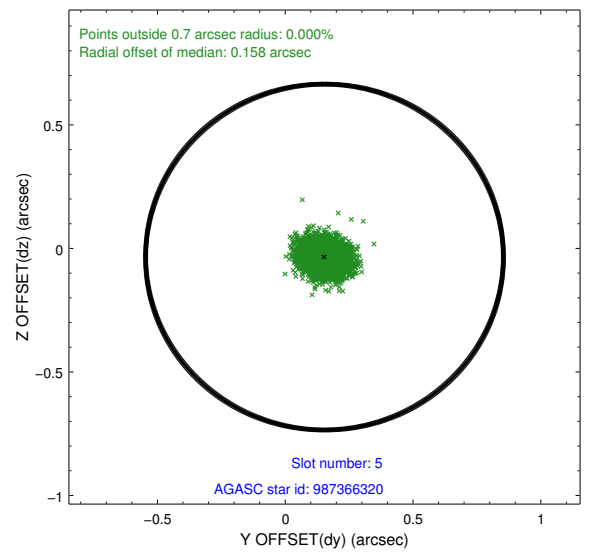
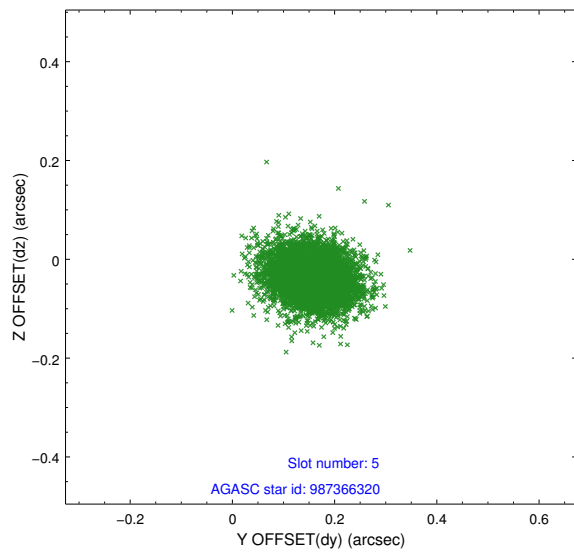
2.4.1 Slot 3



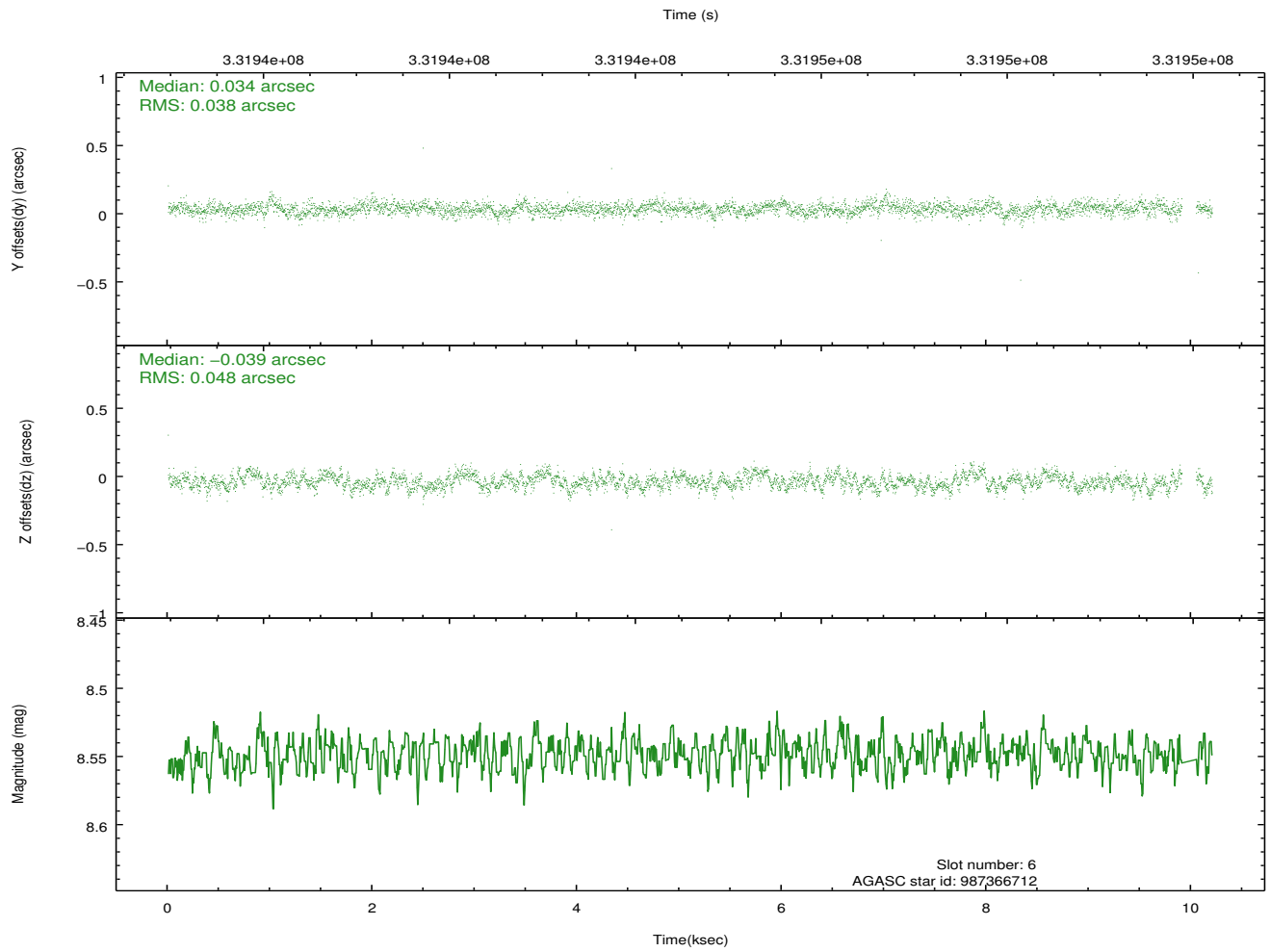
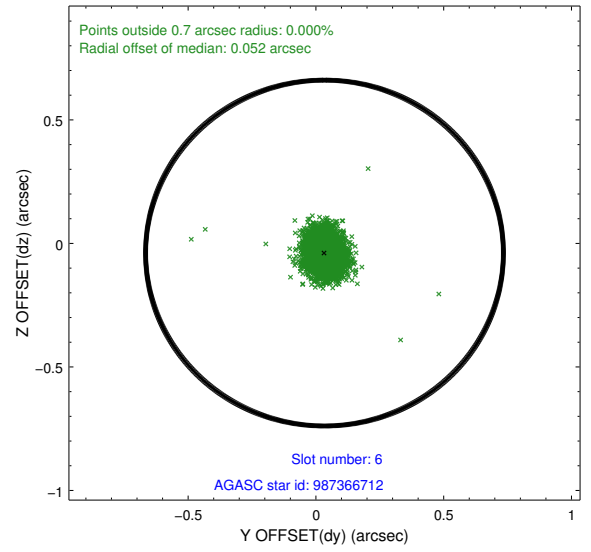
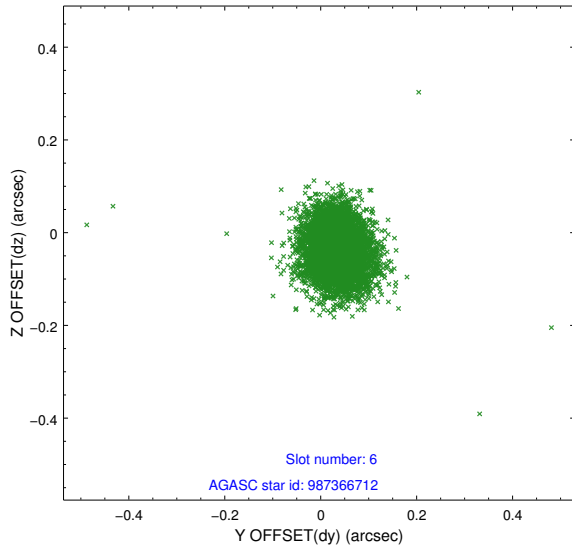
2.4.2 Slot 4



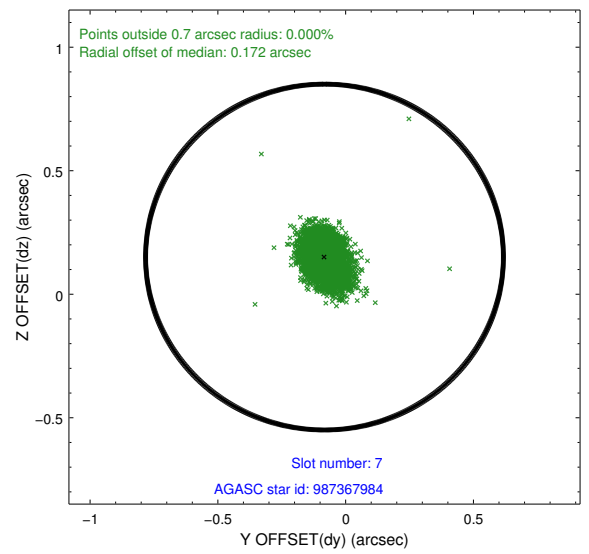
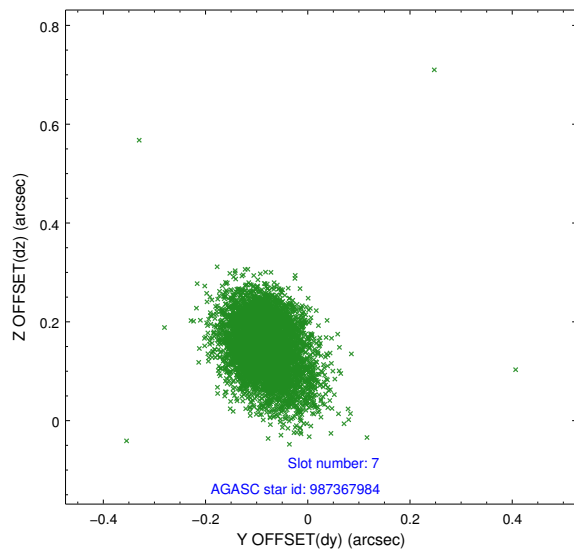
2.4.3 Slot 5



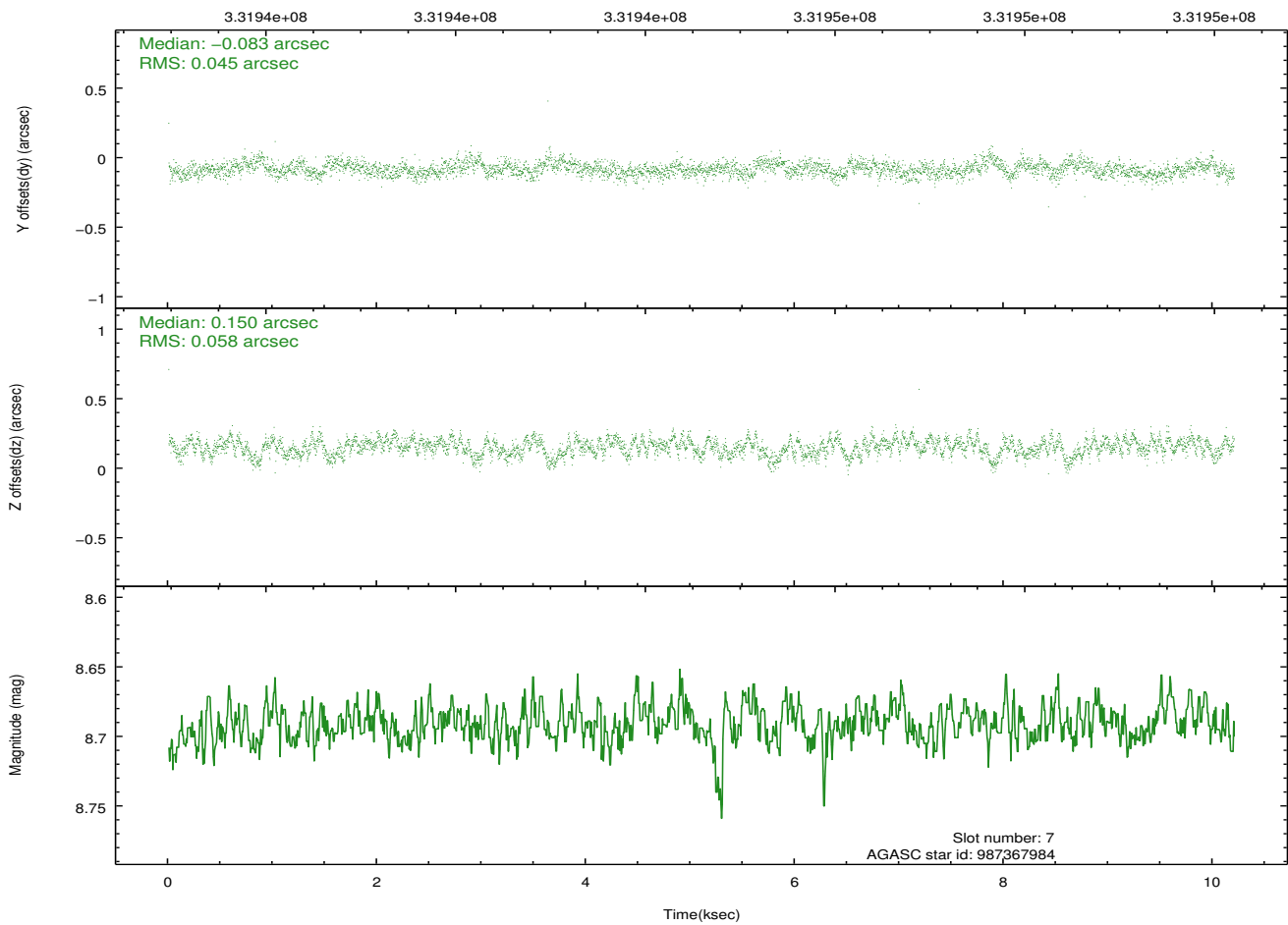
2.4.4 Slot 6



2.4.5 Slot 7

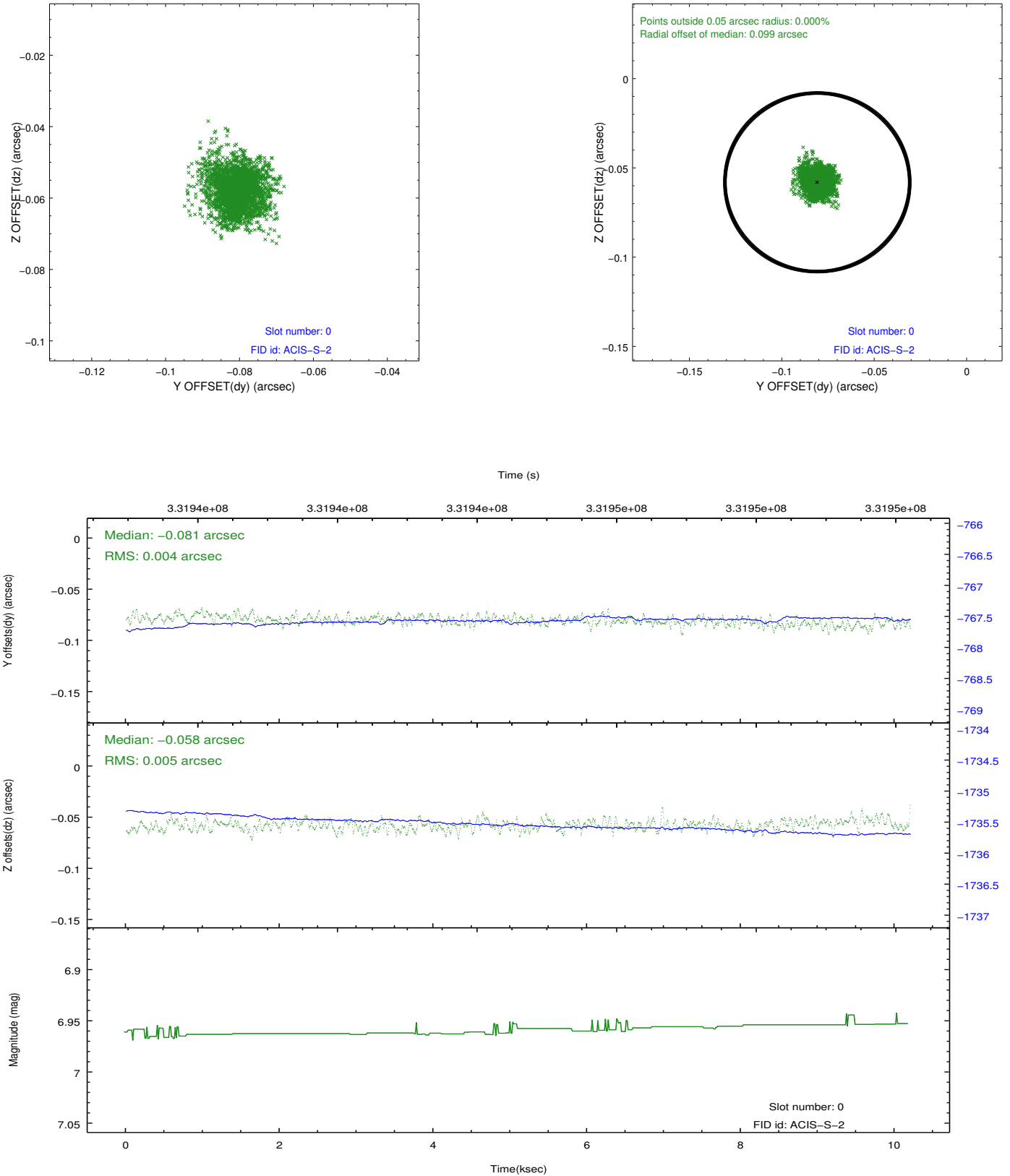


Time (s)

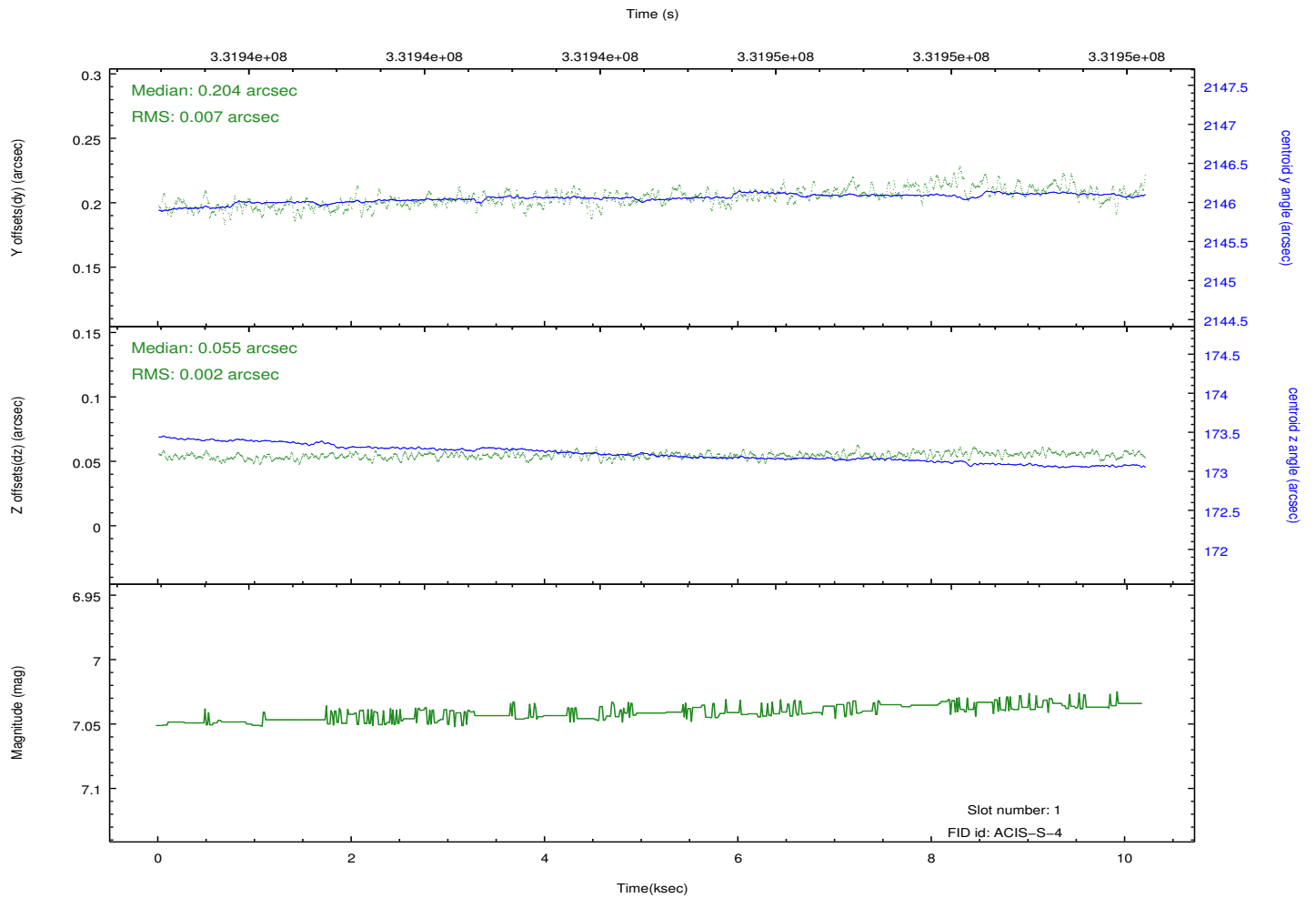
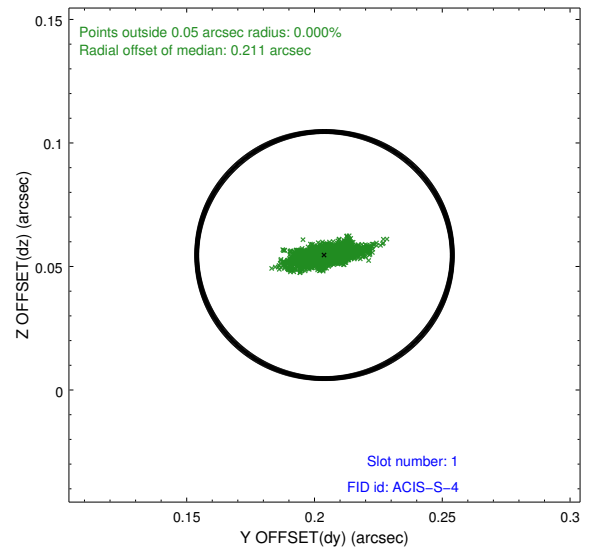
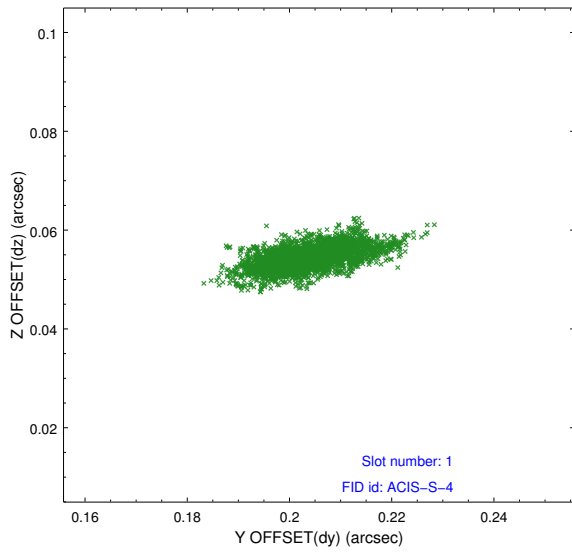


2.5 FID Slots

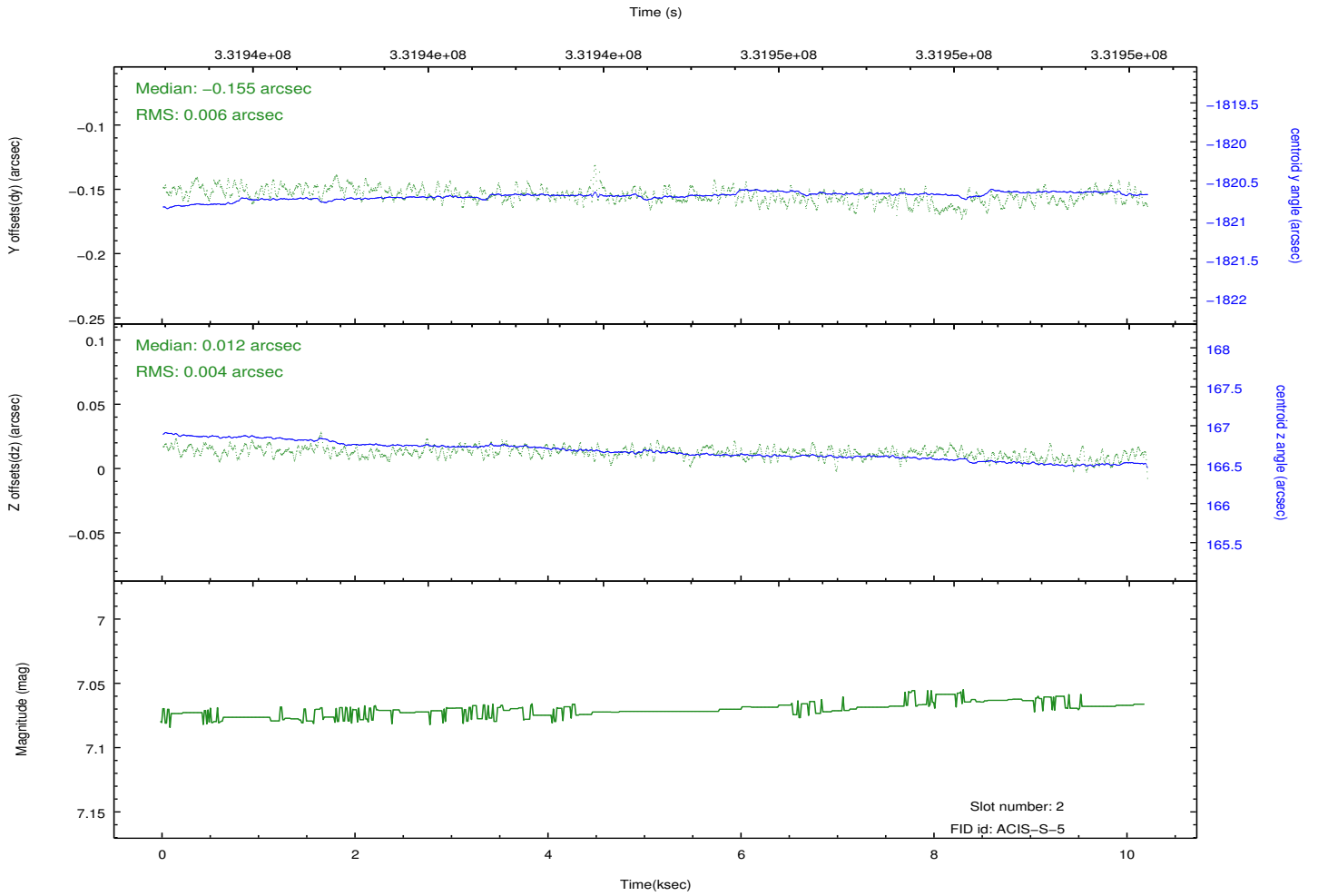
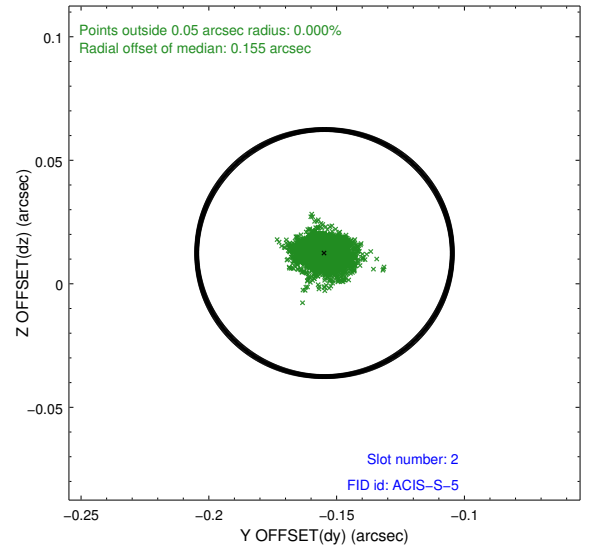
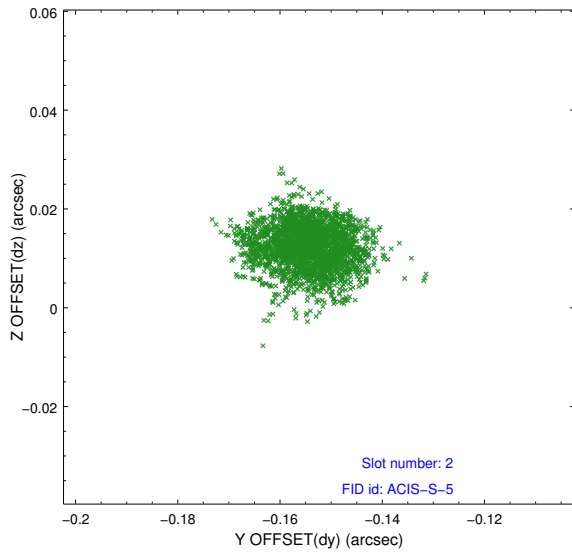
2.5.1 Slot 0



2.5.2 Slot 1



2.5.3 Slot 2



A Summary

A.1 Status

V&V Scientist	Beth Sundheim
V&V Date (YYYY-MM-DD)	2012.05.23
V&V Edition	1
V&V Disposition and Status	OK
V&V Charge Time	10.1983999

A.2 Comments