

V&V Reference Report

L2 ASCDS Version : 8.4.5

Observation 9903 - L2 Version 2
Chandra X-Ray Center

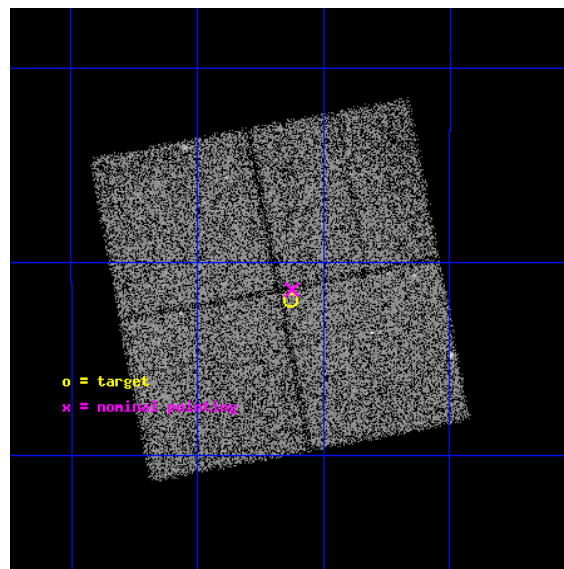
L2 Processing Date : Jun 7 2012

Contents

1	Front	2
2	OBI	3
2.1	OBI	3
2.1.1	Images	3
2.1.2	Bias	3
2.1.3	Parameters	4
2.1.4	Events	4
2.2	Compared Parameters	5
2.3	Aspect	6
2.4	Star Slots	9
2.4.1	Slot 3	9
2.4.2	Slot 4	10
2.4.3	Slot 5	11
2.4.4	Slot 6	12
2.4.5	Slot 7	13
2.5	FID Slots	14
2.5.1	Slot 0	14
2.5.2	Slot 1	15
2.5.3	Slot 2	16
A	Summary	17
A.1	Status	17
A.2	Comments	17

1 Front

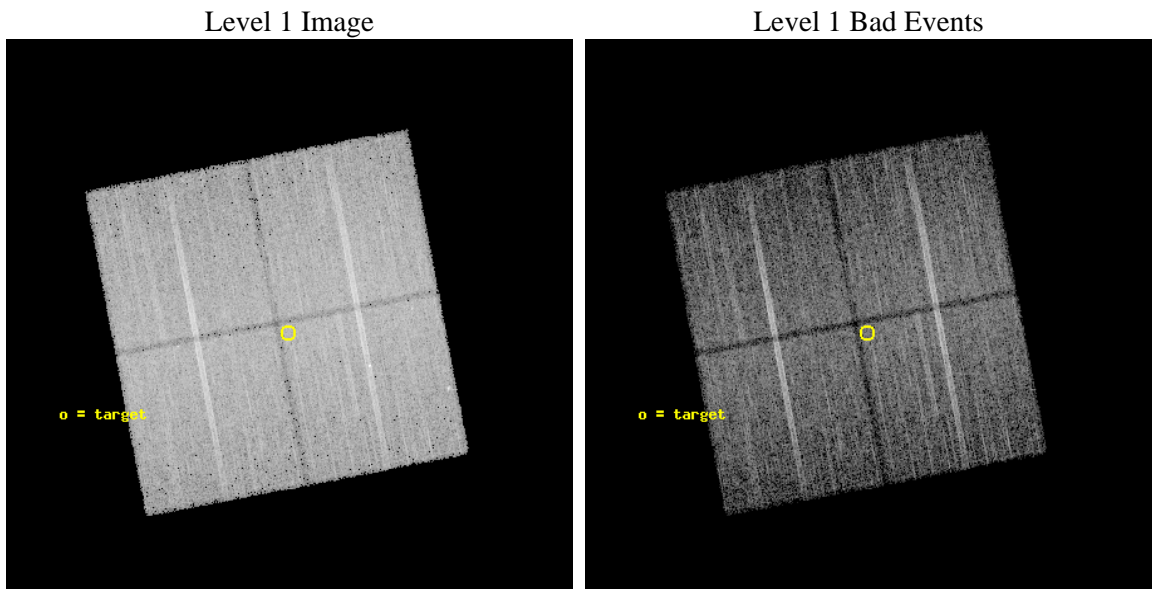
seq_num	600715	Sequence number
obs_id	9903	Observation id
title	Completing the Galactic Bulge Latitude Survey (BLS)	Proposal title
observer	Professor Johnathan Grindlay	Principal investigator
object	GBW31	Source name
dtycycle	0	
cycle	P	events from which exps? Prim/Second/Both
ra_targ	264.9075	Observer's specified target RA [deg]
dec_targ	-28.365306	Observer's specified target Dec [deg]
ra_nom	264.90648938033	Nominal RA [deg]
dec_nom	-28.357262367287	Nominal Dec [deg]
roll_nom	79.208233277758	Nominal Roll [deg]
revision	2	Processing version of data
ontime	14774.436142445	Sum of GTIs [s]
livetime	14581.397257462	Livetime [s]
ontime0	14787.000113726	Sum of GTIs [s]
ontime1	14780.718133092	Sum of GTIs [s]
ontime2	14783.859123349	Sum of GTIs [s]
ontime3	14774.436142445	Sum of GTIs [s]
l2events	74328	Number of level 2 events



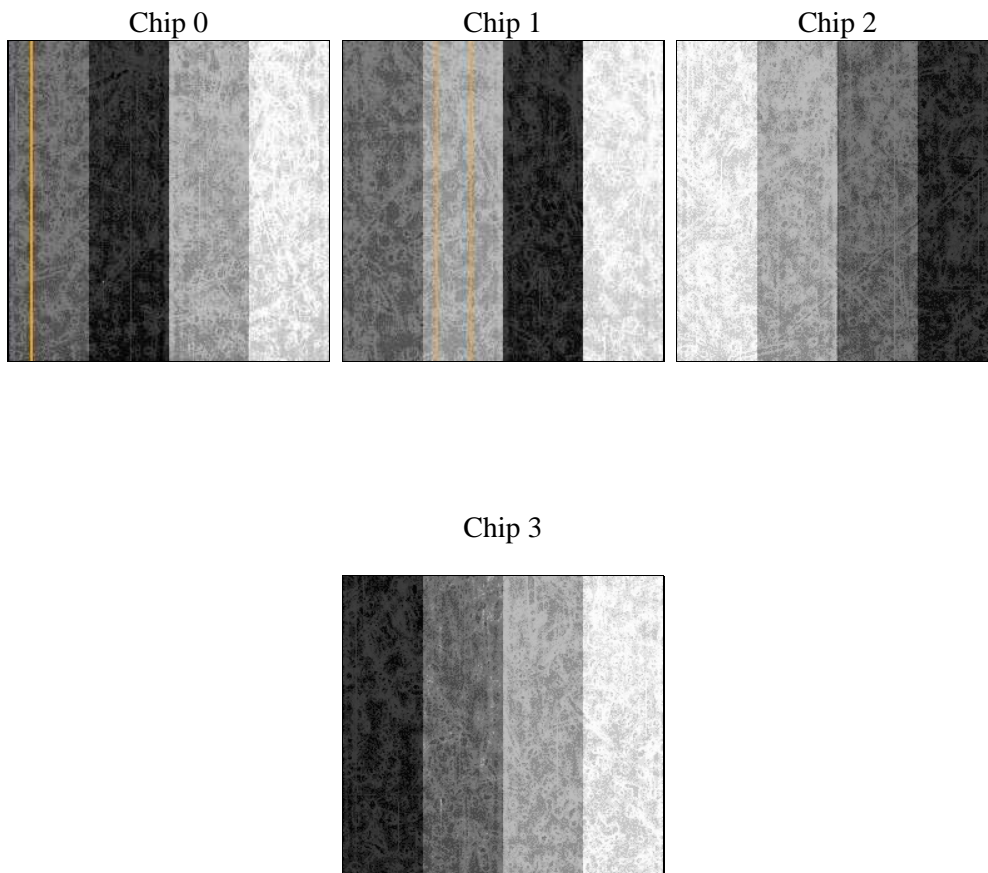
2 OBI

2.1 OBI

2.1.1 Images



2.1.2 Bias



2.1.3 Parameters

obi_num	0	Obi number	sched_exp_time	15000.000000	[s] Scheduled observation exposure time
ascdsver	8.4.5	Processing system revision	ontime	14774.436142445	Sum of GTIs [s]
caldsver	4.4.10	 	ontime0	14787.000113726	Sum of GTIs [s]
date	2012-06-07T15:37:36	Date and time of file creation	ontime1	14780.718133092	Sum of GTIs [s]
revision	2	Processing version of data	ontime2	14783.859123349	Sum of GTIs [s]
			ontime3	14774.436142445	Sum of GTIs [s]
			l1events	597723	Number of level 1 events

2.1.4 Events

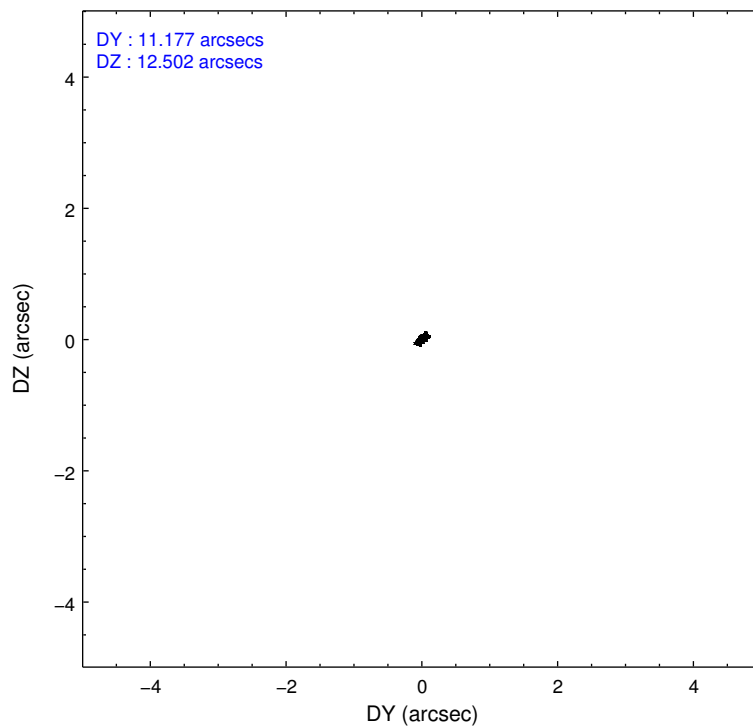
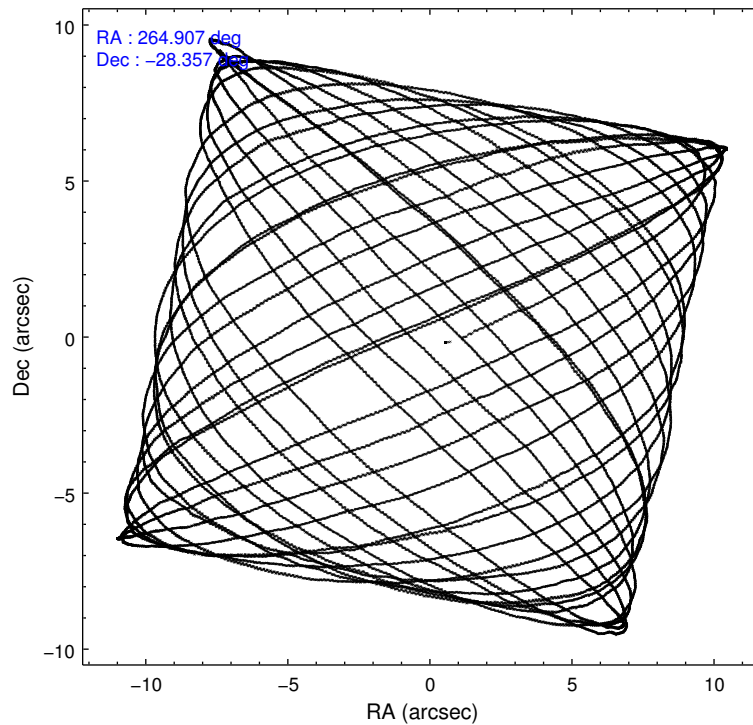
	ccd 0	ccd 1	ccd 2	ccd 3
level 1 events	143129	145252	154837	154505
rejected events	121298	122966	134575	133186
rejected %	84%	84%	86%	86%

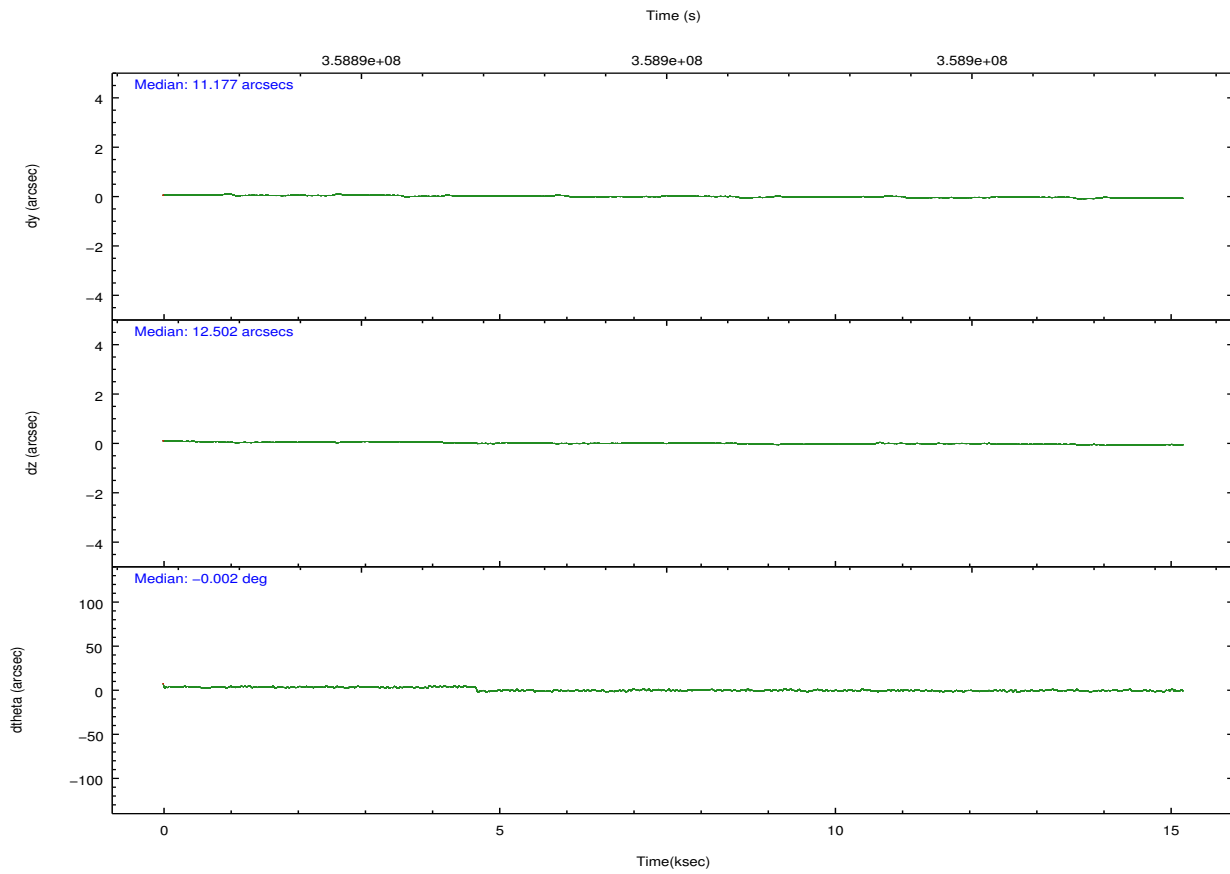
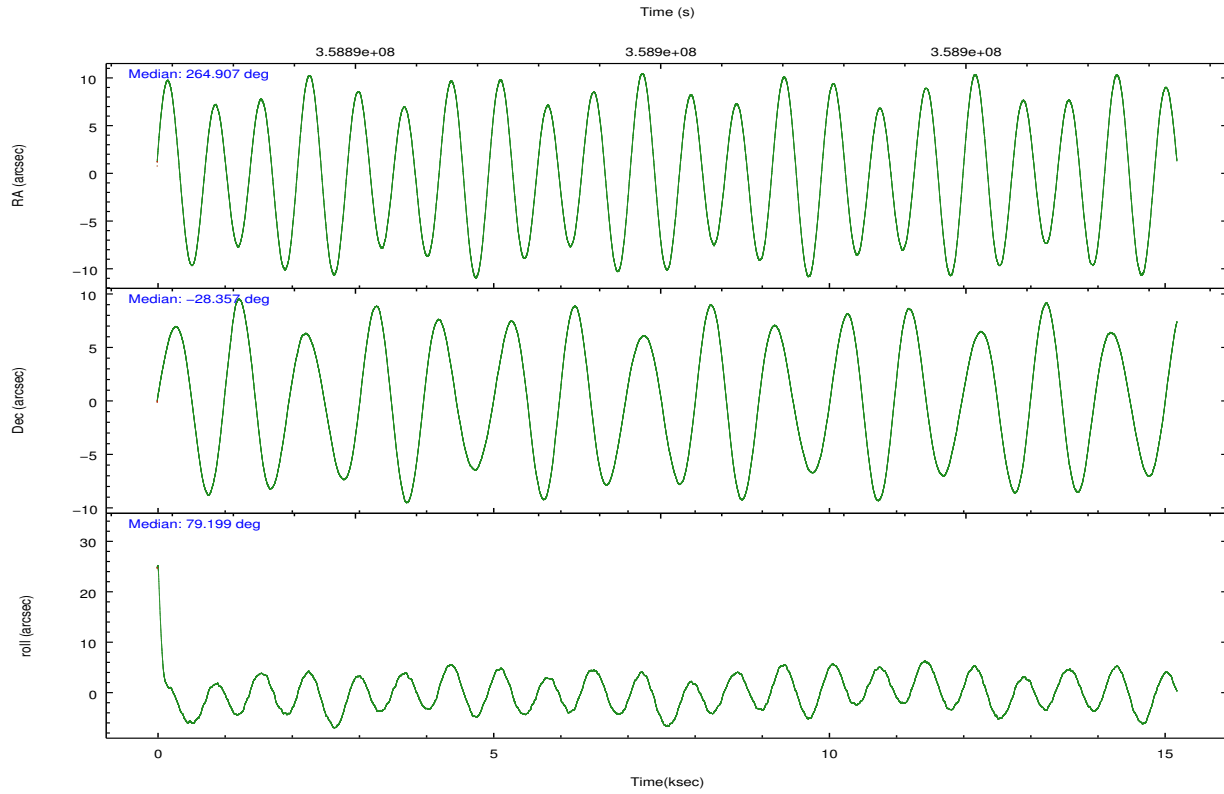
	ccd 0	ccd 1	ccd 2	ccd 3
grade 0 events	9896	9186	9380	10155
	6%	6%	6%	6%
grade 1 events	93	78	119	144
	0%	0%	0%	0%
grade 2 events	4781	5115	4178	4002
	3%	3%	2%	2%
grade 3 events	1846	1995	1714	1910
	1%	1%	1%	1%
grade 4 events	1773	1881	1780	1819
	1%	1%	1%	1%
grade 5 events	6734	6995	6374	7486
	4%	4%	4%	4%
grade 6 events	3540	4118	3216	3441
	2%	2%	2%	2%
grade 7 events	114466	115884	128076	125548
	79%	79%	82%	81%

2.2 Compared Parameters

Parameter	Planned	Actual	Parameter	Planned	Actual
Instrument	ACIS	ACIS	Obspar format version number	7	7
Detector	ACIS-0123	ACIS-0123	Obspar file type	PREDICTED	ACTUAL
Grating	NONE	NONE	Obspar update status	NONE	UPDATED
Data mode	VFAINT	VFAINT	Number of optional ACIS chips dropped	0	0
Observation mode	POINTING	POINTING	On-chip summing requested	N	N
[deg] Pointing RA	264.916866	264.906489380332	Subarray requested	NONE	NONE
[deg] Pointing Dec	-28.383206	-28.35726236728723	Alternating exposures requested	N	N
[deg] Pointing Roll	79.004448	79.2082332777584	[s] Primary exposure time	0.000000	3.1
[mm] SIM focus pos	-0.782348	-0.7809083437167272			
[mm] SIM defocus	0	0.001439871863259334			
[mm] SIM translation stage pos	-233.592463	-233.5874344608287			
[mm] SIM translation stage offset	0	-0.005018542100998502			
[s] Observation start time (MET)	358887696.184000	358887249.05533			
Observation start date	2009-05-16T19:00:30	2009-05-16T18:54:09			
[s] Observation end time (MET)	358902696.184000	358902829.5686			
Observation end date	2009-05-16T23:10:30	2009-05-16T23:13:49			
Read mode	TIMED	TIMED			

2.3 Aspect



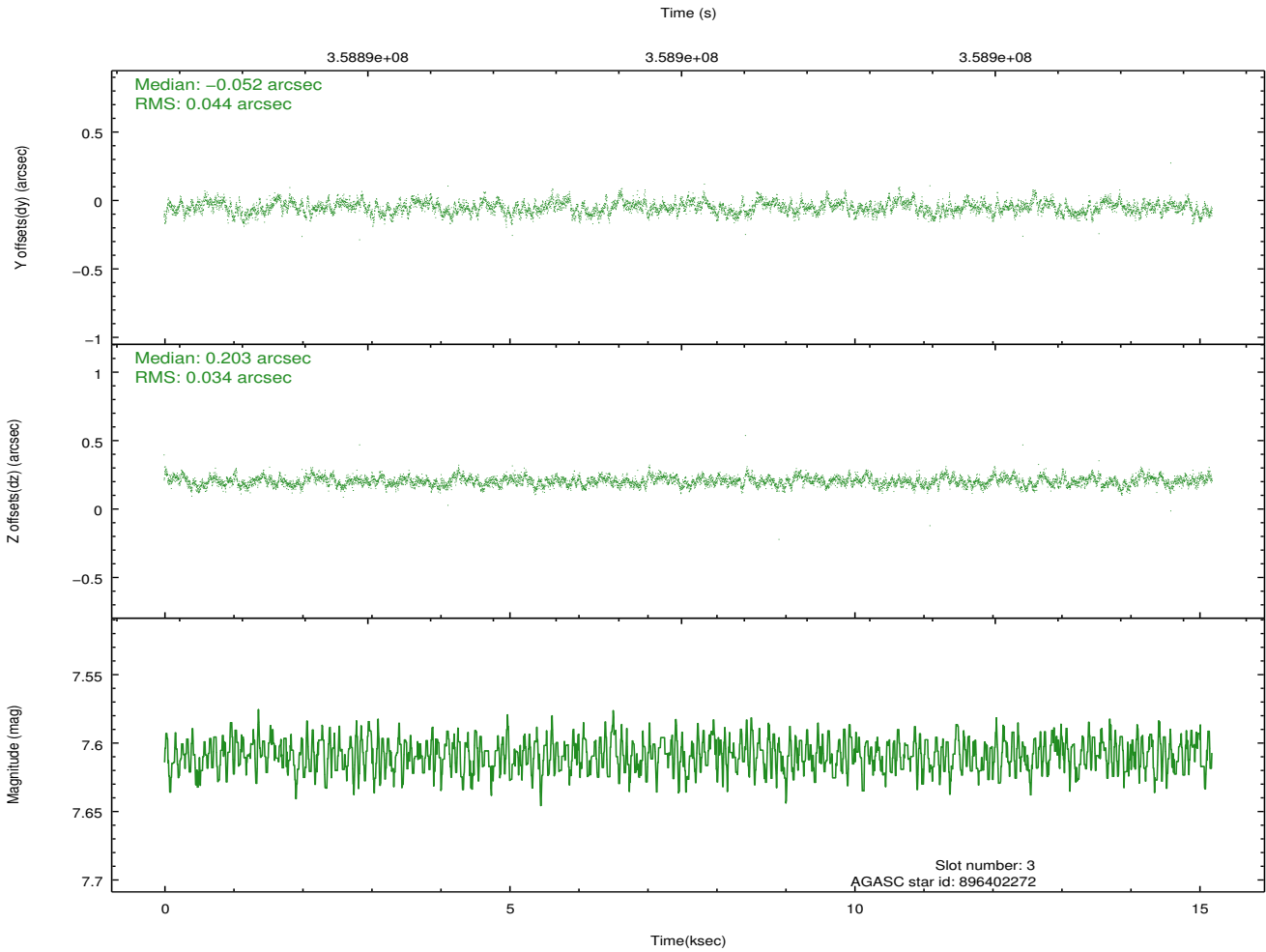
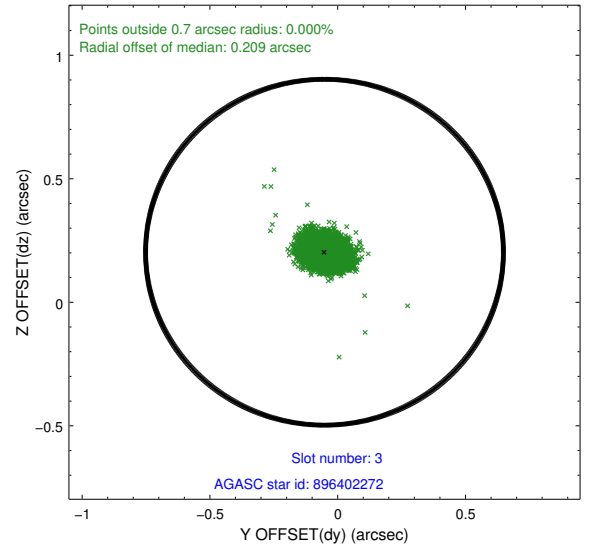
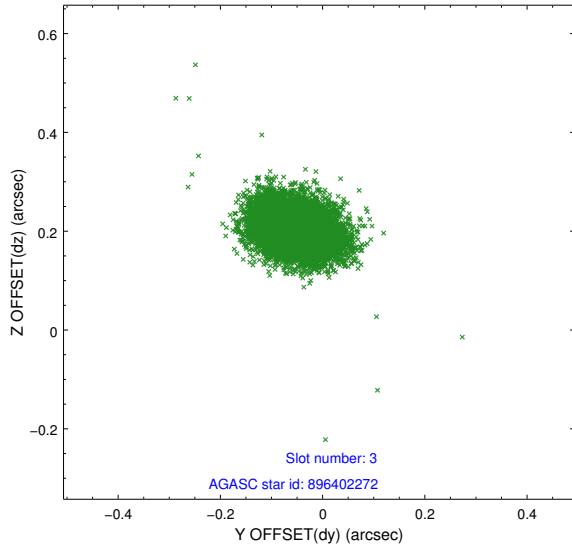


Slot Statistics

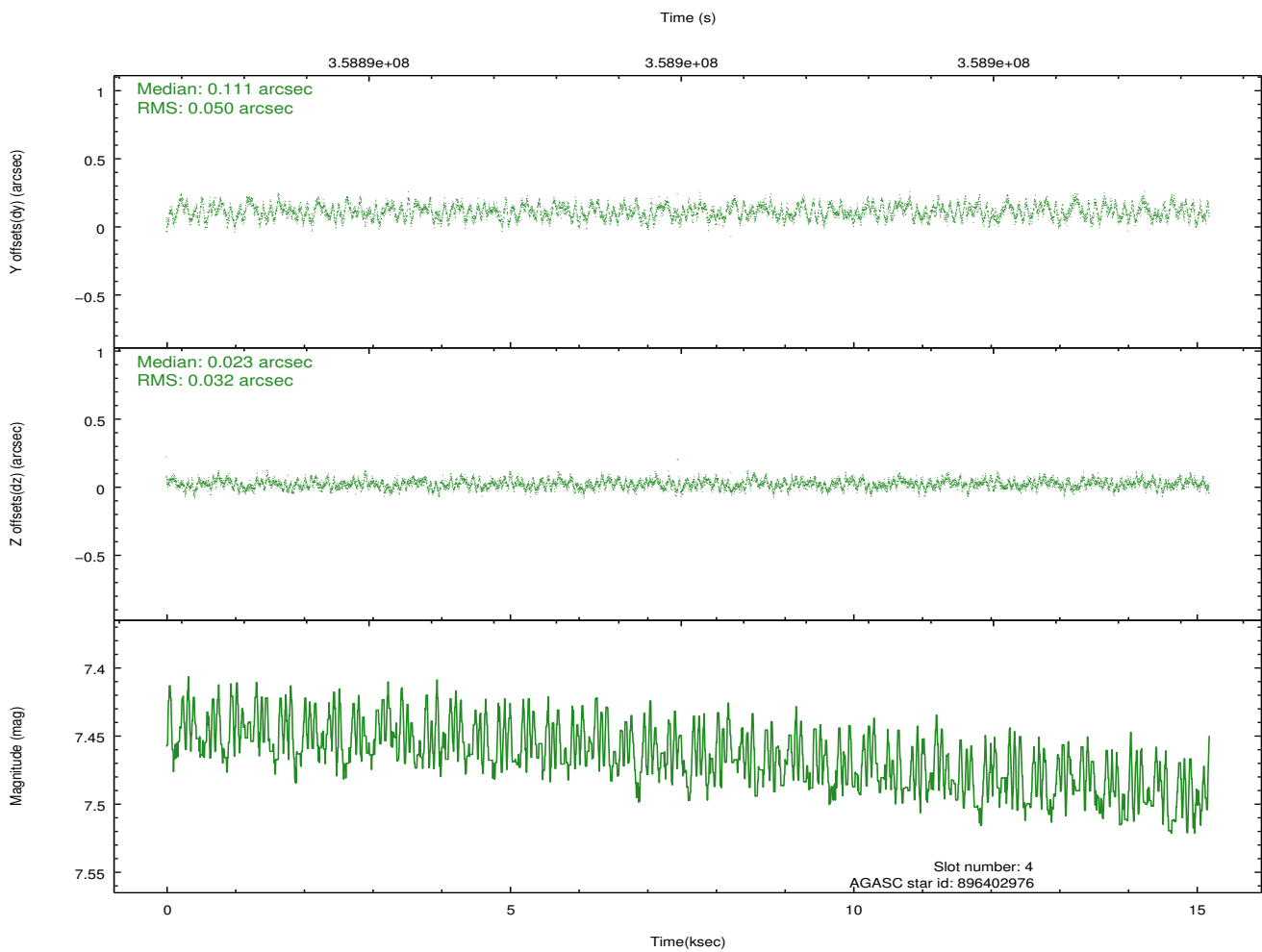
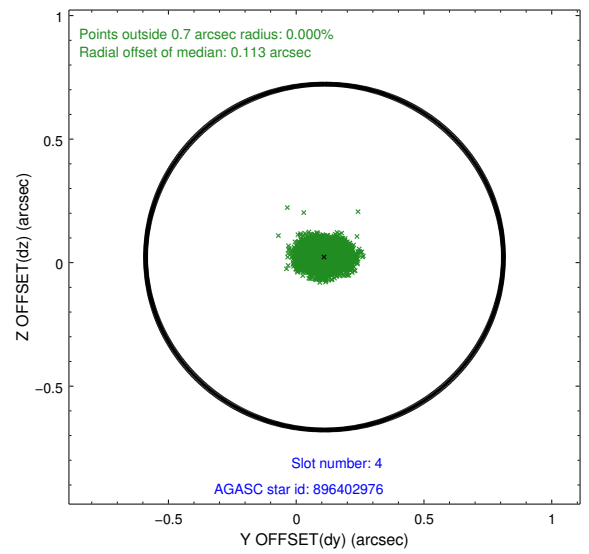
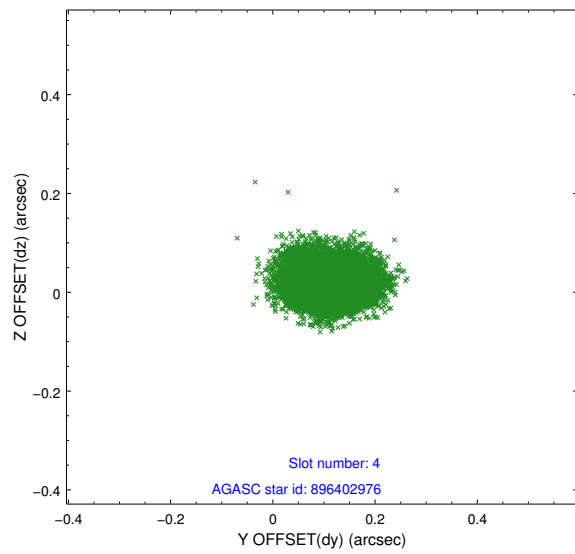
slot	status	id	mag	n_pts	med_dy	med_dz	dr1	dr2	ra	dec	mean_y	mean_z
0	FID	ACIS-I-1	7.10	3705	0.014	-0.066	0.021	0.055	0.000000	0.000000	928.40	-836.09
1	FID	ACIS-I-4	7.02	3705	0.134	0.064	0.018	0.043	0.000000	0.000000	2148.73	1063.67
2	FID	ACIS-I-5	7.09	3705	-0.245	0.073	0.014	0.025	0.000000	0.000000	-1819.48	1061.88
3	GUIDE	896402272	7.61	7408	-0.052	0.203	0.058	0.096	265.637294	-28.313189	676.73	-2193.99
4	GUIDE	896402976	7.47	7410	0.111	0.023	0.063	0.099	265.099474	-28.923203	-1798.48	-936.02
5	GUIDE	896403960	8.57	7404	-0.072	-0.157	0.085	0.134	264.379044	-28.245612	156.76	1768.07
6	GUIDE	896406568	8.25	7407	0.109	-0.188	0.068	0.108	264.435951	-28.437282	-484.41	1456.98
7	GUIDE	896402656	8.85	7406	-0.099	0.121	0.075	0.120	265.739192	-28.230753	1027.96	-2456.61

2.4 Star Slots

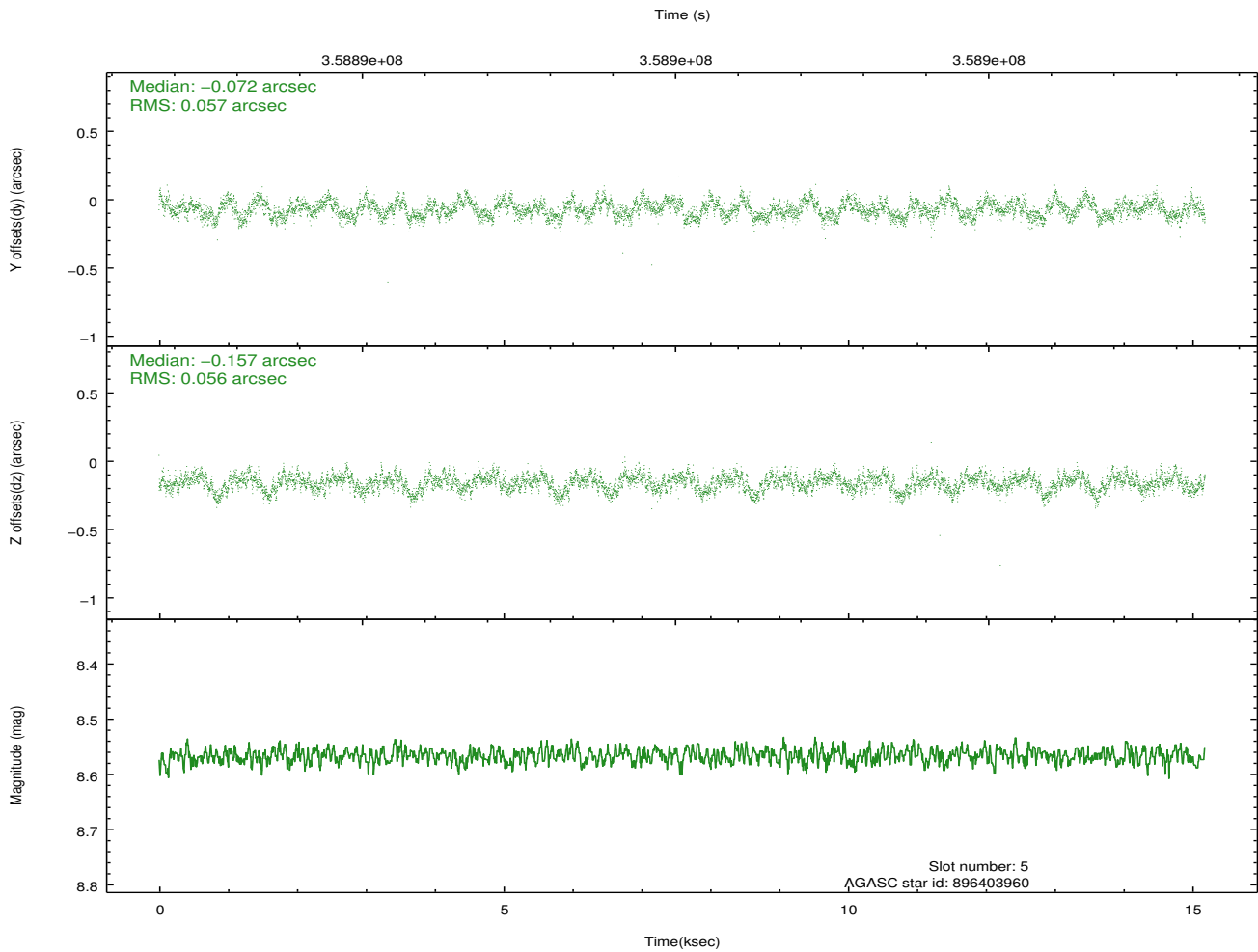
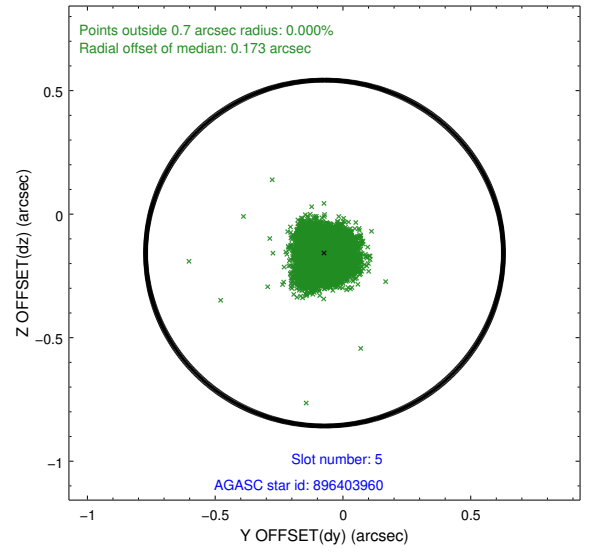
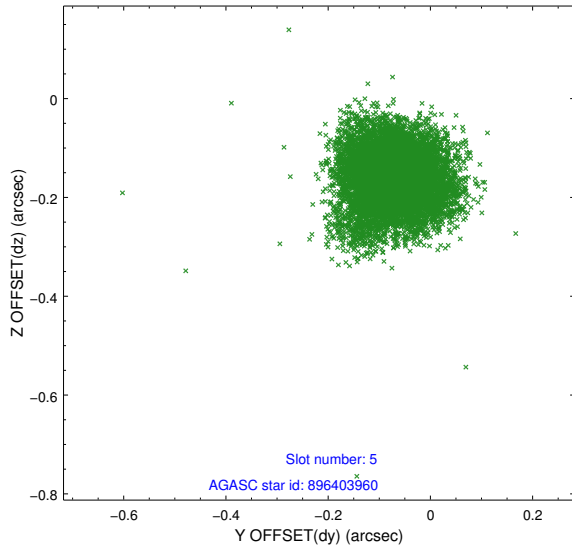
2.4.1 Slot 3



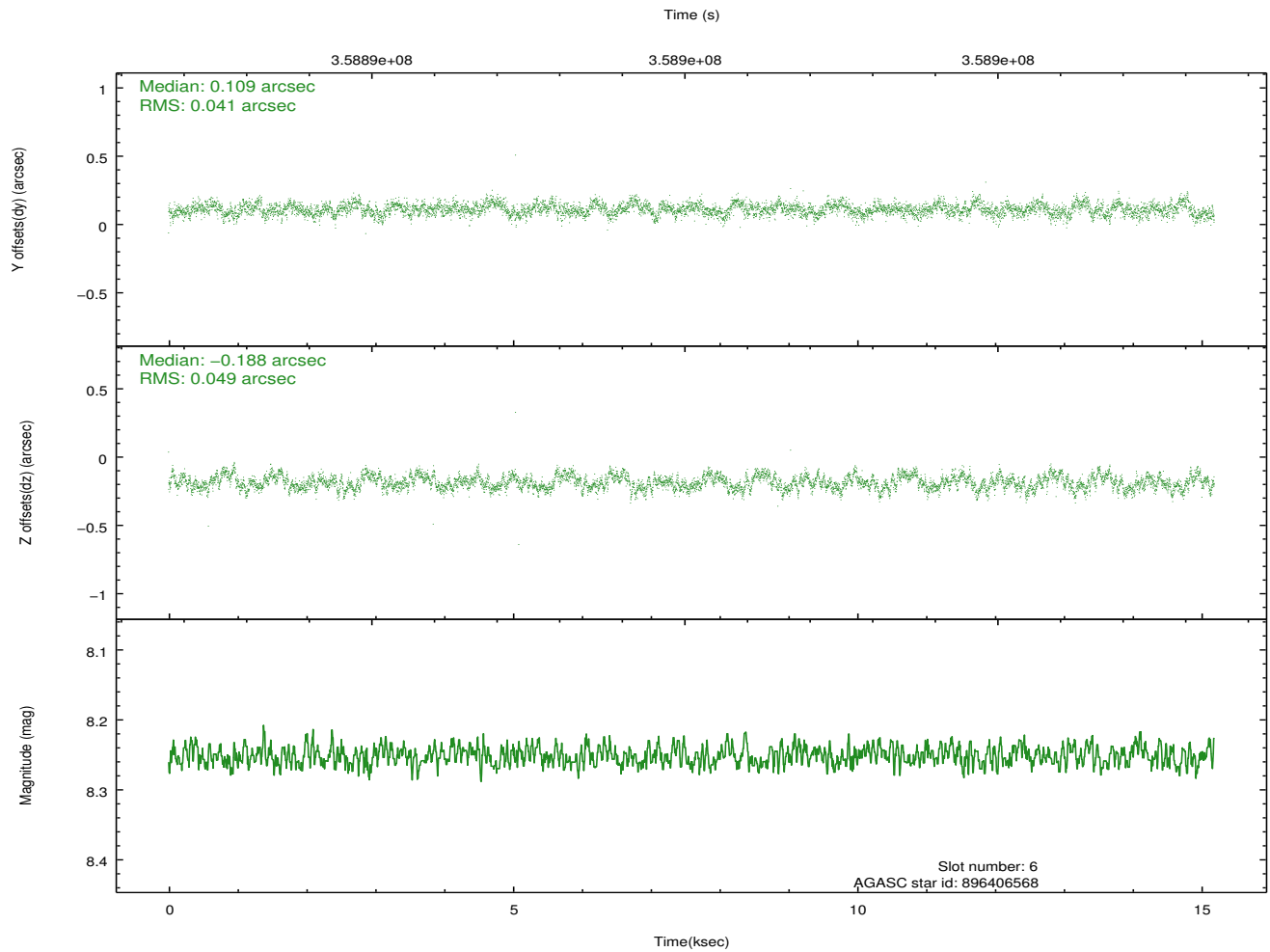
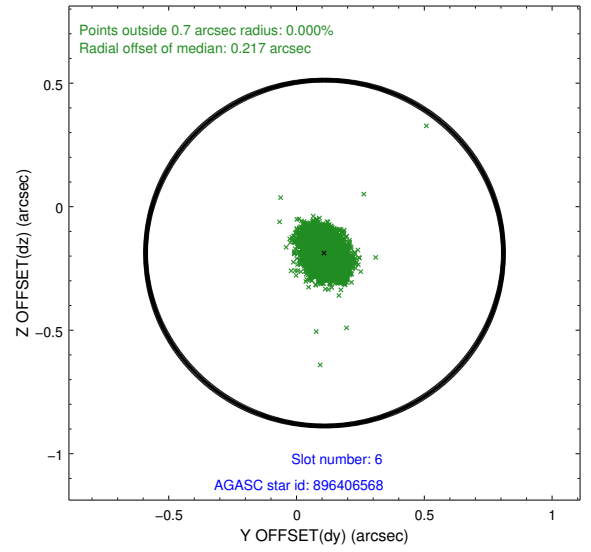
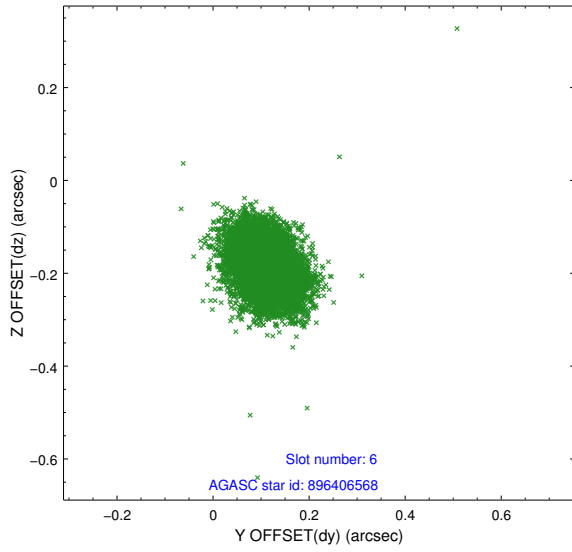
2.4.2 Slot 4



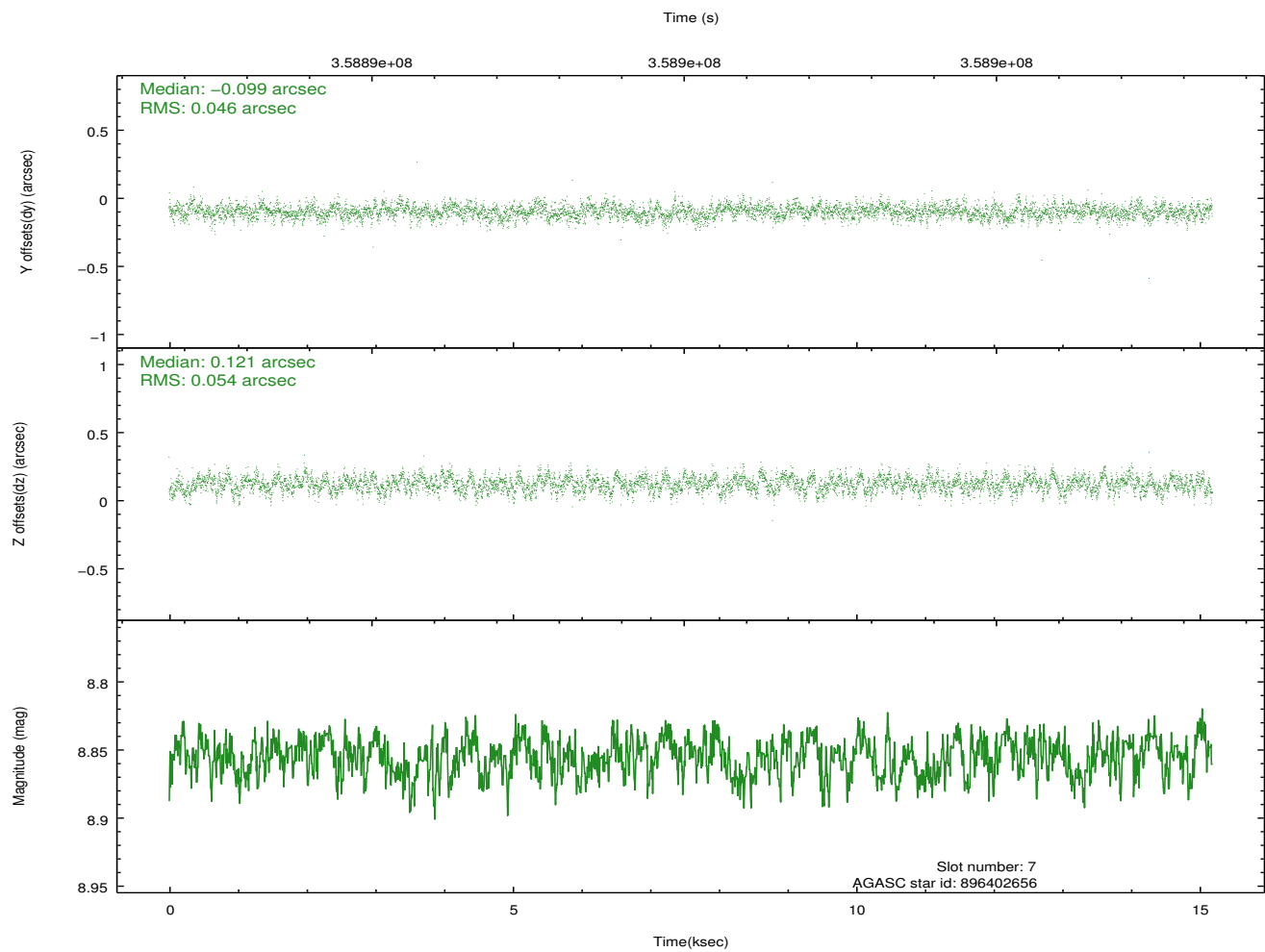
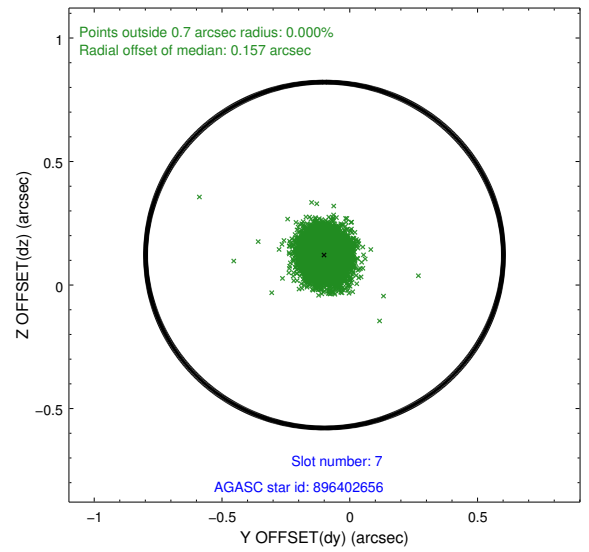
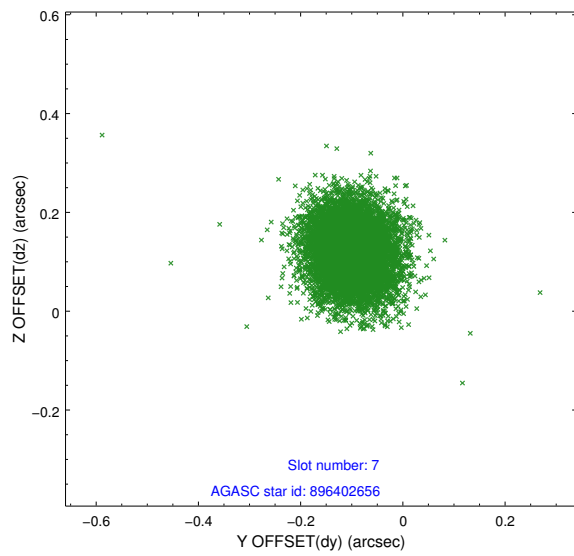
2.4.3 Slot 5



2.4.4 Slot 6

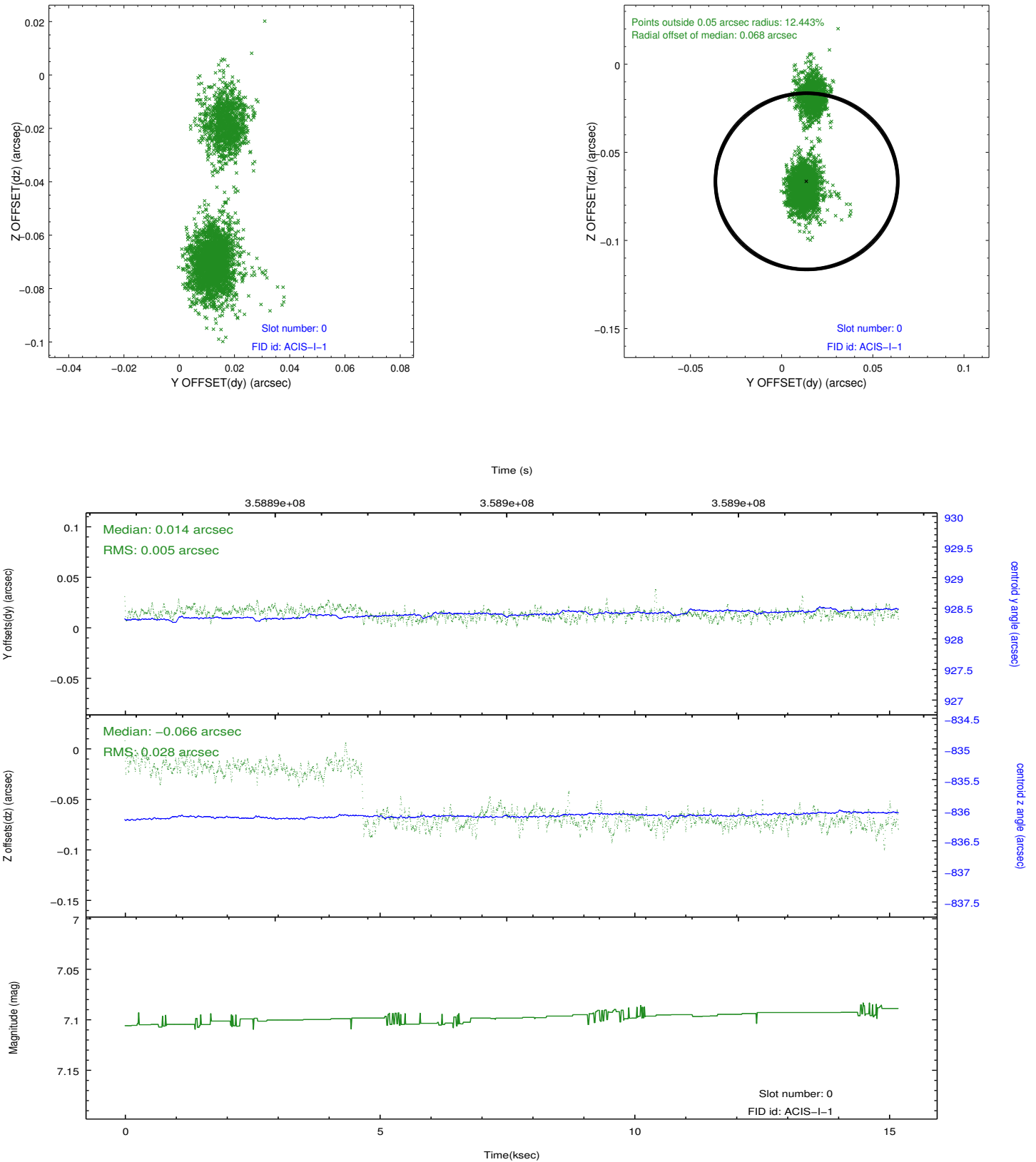


2.4.5 Slot 7

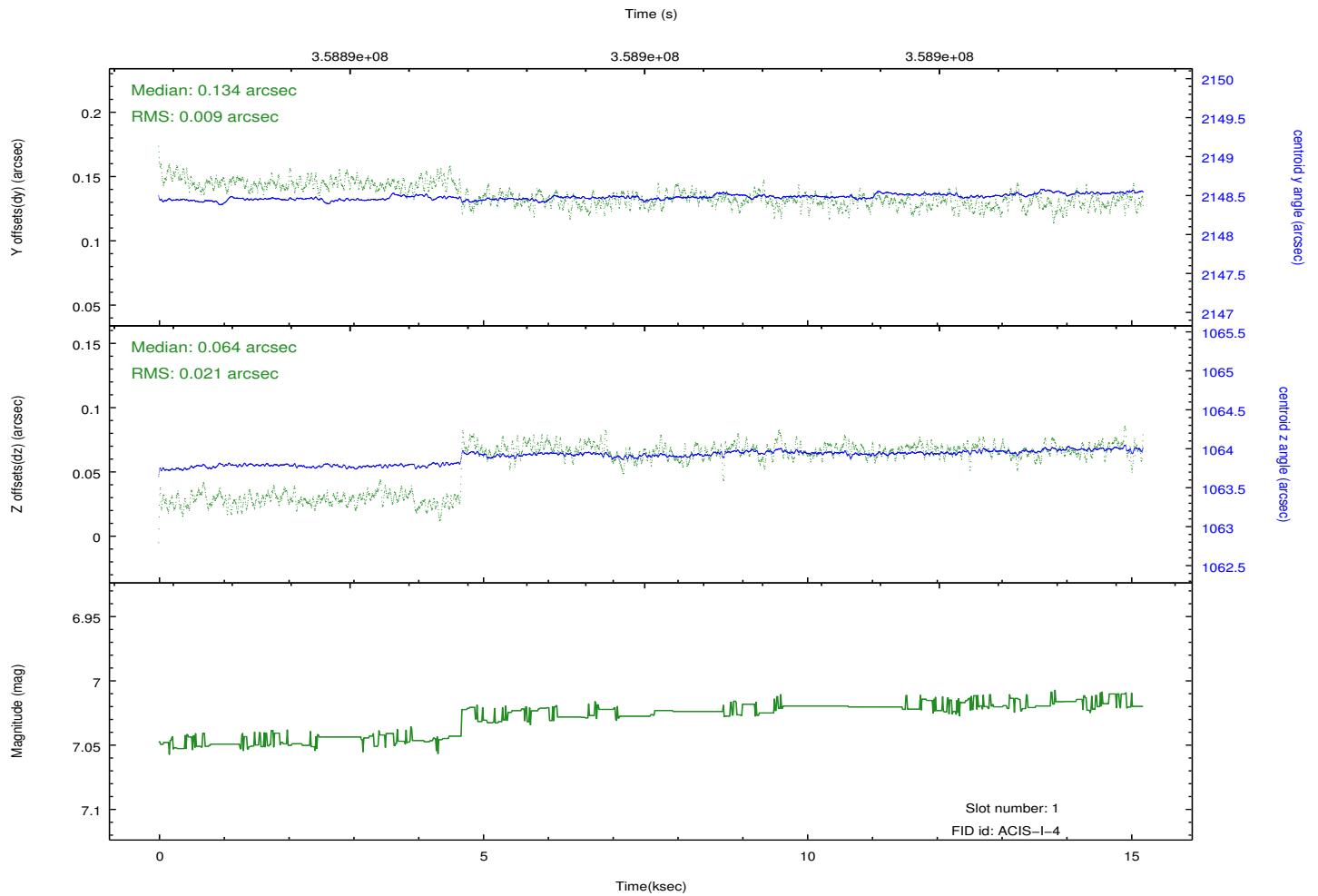
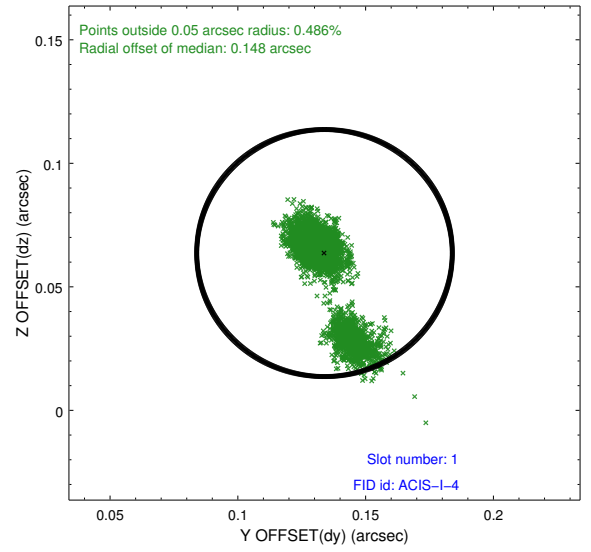
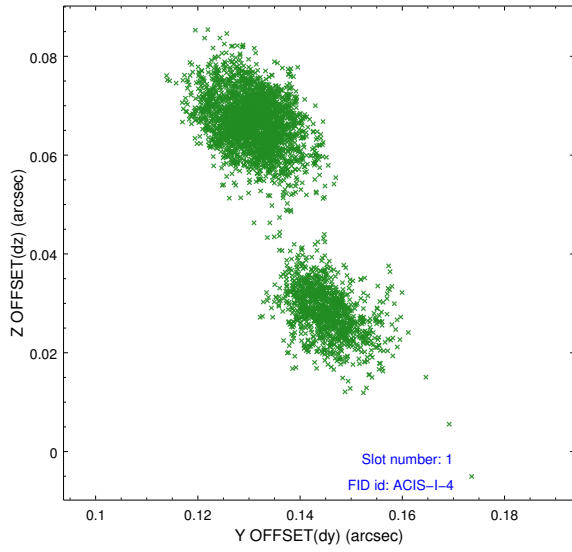


2.5 FID Slots

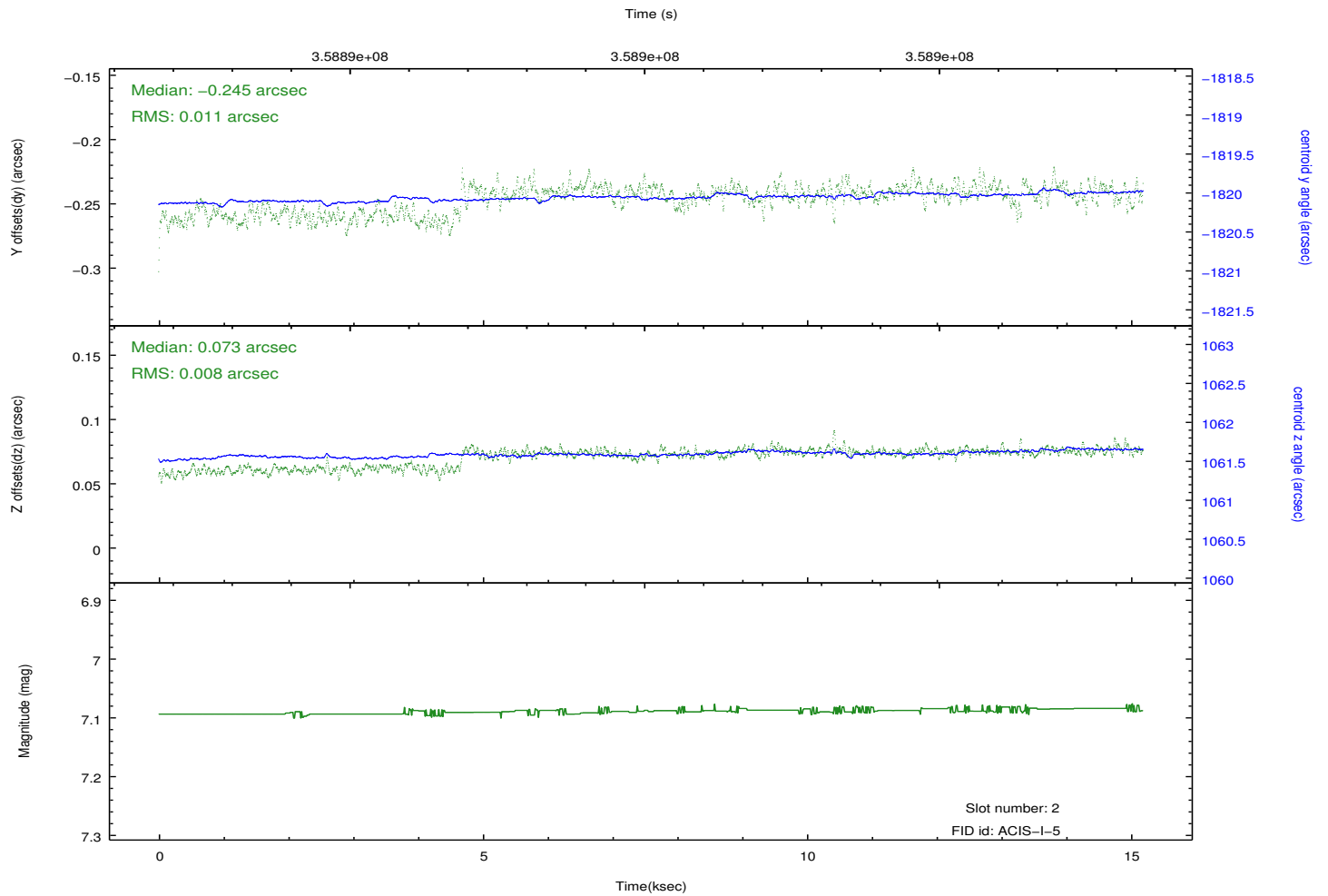
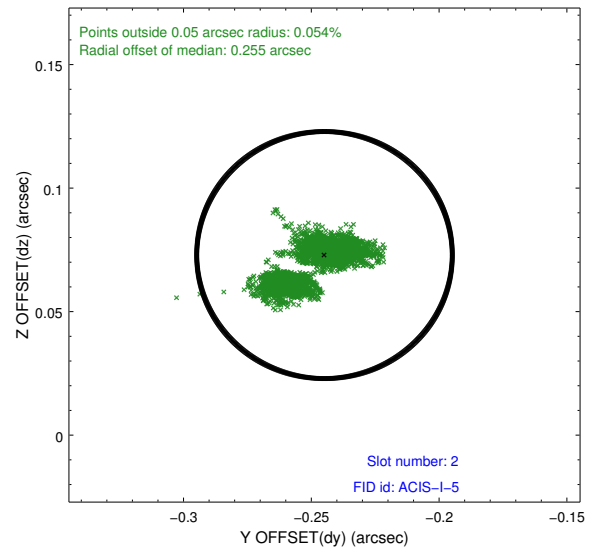
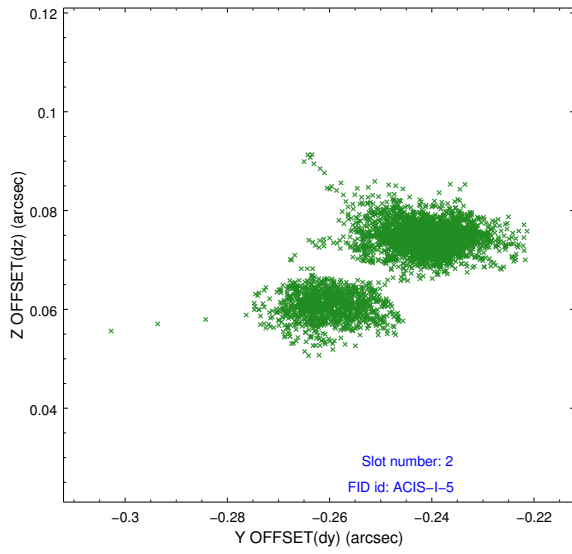
2.5.1 Slot 0



2.5.2 Slot 1



2.5.3 Slot 2



A Summary

A.1 Status

V&V Scientist	Beth Sundheim
V&V Date (YYYY-MM-DD)	2012.06.11
V&V Edition	1
V&V Disposition and Status	OK
V&V Charge Time	14.7744361

A.2 Comments

Joint proposal with NOAO.