

# V&V Reference Report

## L2 ASCDS Version : 8.4.5

Observation 9953 - L2 Version 2  
Chandra X-Ray Center

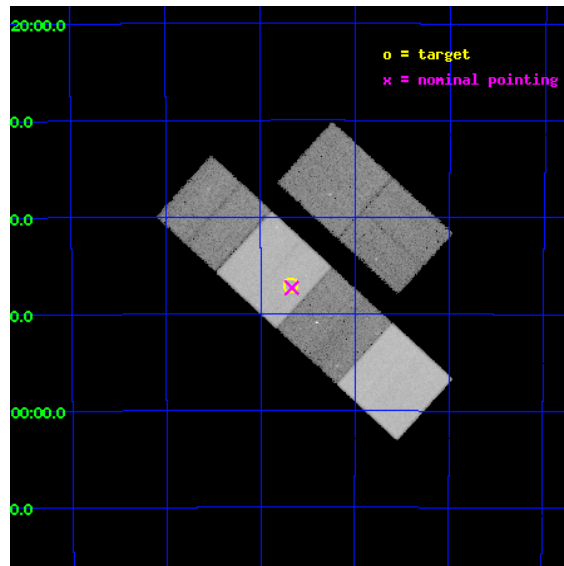
L2 Processing Date : Jun 10 2012

## Contents

<b>1</b>	<b>Front</b>	<b>2</b>
<b>2</b>	<b>OBI</b>	<b>3</b>
2.1	OBI . . . . .	3
2.1.1	Images . . . . .	3
2.1.2	Bias . . . . .	3
2.1.3	Parameters . . . . .	4
2.1.4	Events . . . . .	4
2.2	Compared Parameters . . . . .	5
2.3	Aspect . . . . .	6
2.4	Star Slots . . . . .	9
2.4.1	Slot 3 . . . . .	9
2.4.2	Slot 4 . . . . .	10
2.4.3	Slot 5 . . . . .	11
2.4.4	Slot 6 . . . . .	12
2.4.5	Slot 7 . . . . .	13
2.5	FID Slots . . . . .	14
2.5.1	Slot 0 . . . . .	14
2.5.2	Slot 1 . . . . .	15
2.5.3	Slot 2 . . . . .	16
<b>A</b>	<b>Summary</b>	<b>17</b>
A.1	Status . . . . .	17
A.2	Comments . . . . .	17

# 1 Front

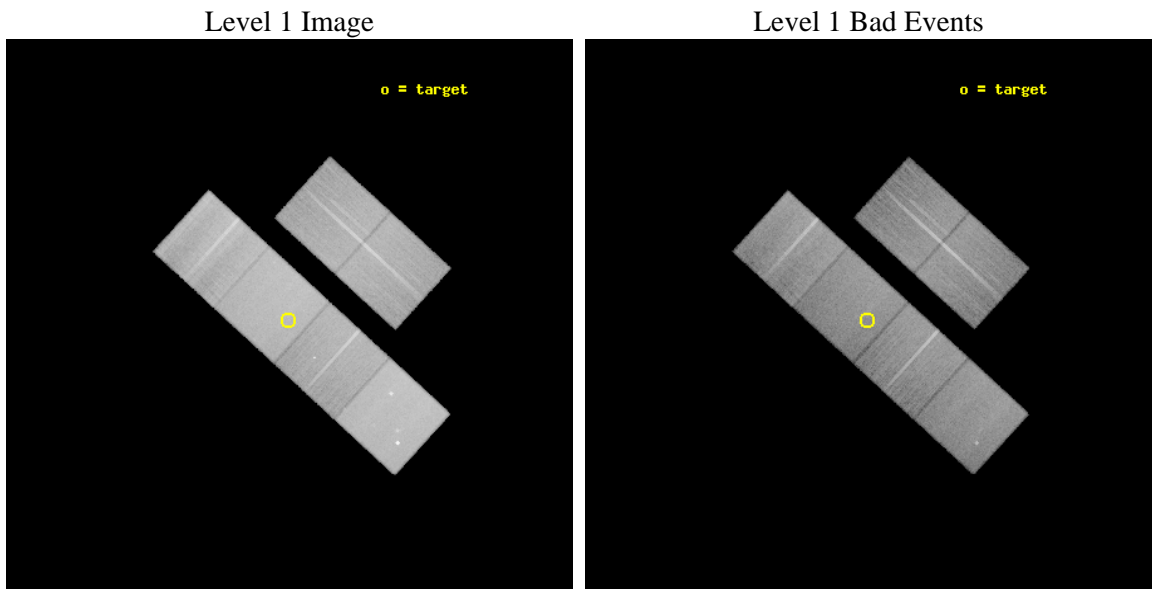
seq_num	300240	Sequence number
obs_id	9953	Observation id
title	PlaN-B: The hyperactive coronae of interacting companions in planetary nebulae	Proposal title
observer	Prof. Orsola De Marco	Principal investigator
object	PN DS 1	Source name
dtcycle	0	&#160
cycle	P	events from which exps? Prim/Second/Both
ra_targ	163.669167	Observer's specified target RA [deg]
dec_targ	-48.784111	Observer's specified target Dec [deg]
ra_nom	163.66716854321	Nominal RA [deg]
dec_nom	-48.788774585552	Nominal Dec [deg]
roll_nom	222.45277537907	Nominal Roll [deg]
revision	2	Processing version of data
ontime	24149.641020358	Sum of GTIs [s]
livetime	23843.84372459	Livetime [s]
ontime2	24149.682060361	Sum of GTIs [s]
ontime3	24149.517900348	Sum of GTIs [s]
ontime5	24149.599980354	Sum of GTIs [s]
ontime6	24146.317970037	Sum of GTIs [s]
ontime7	24149.641020358	Sum of GTIs [s]
ontime8	24149.476860344	Sum of GTIs [s]
l2events	435281	Number of level 2 events



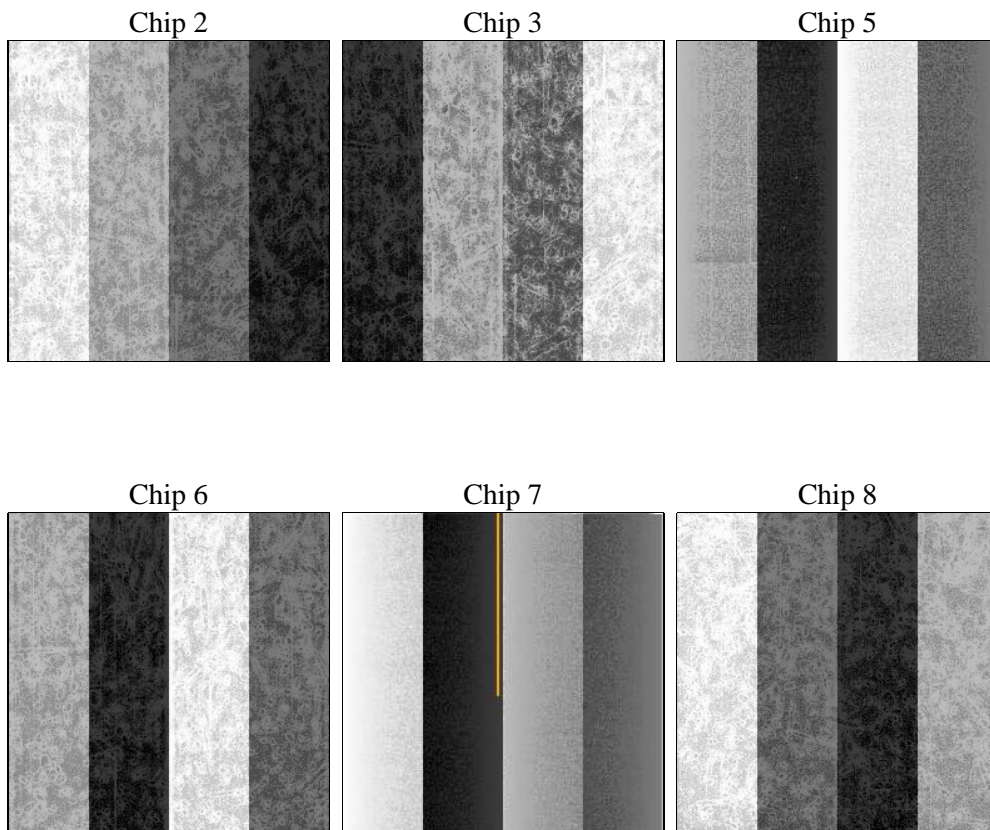
## 2 OBI

### 2.1 OBI

#### 2.1.1 Images



#### 2.1.2 Bias



### 2.1.3 Parameters

obi_num	0	Obi number	sched_exp_time	24200.000000	[s] Scheduled observation exposure time
ascdsver	8.4.5	Processing system revision	ontime	24149.641020358	Sum of GTIs [s]
caldbver	4.4.10	&#160	ontime2	24149.682060361	Sum of GTIs [s]
date	2012-06-10T12:26:42	Date and time of file creation	ontime3	24149.517900348	Sum of GTIs [s]
revision	2	Processing version of data	ontime5	24149.599980354	Sum of GTIs [s]
			ontime6	24146.317970037	Sum of GTIs [s]
			ontime7	24149.641020358	Sum of GTIs [s]
			ontime8	24149.476860344	Sum of GTIs [s]
			l1events	1848261	Number of level 1 events

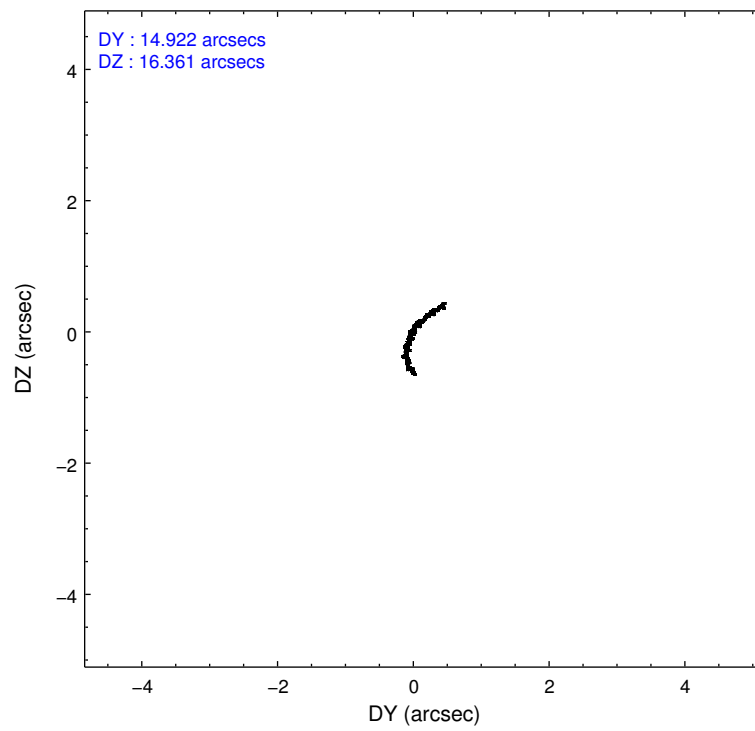
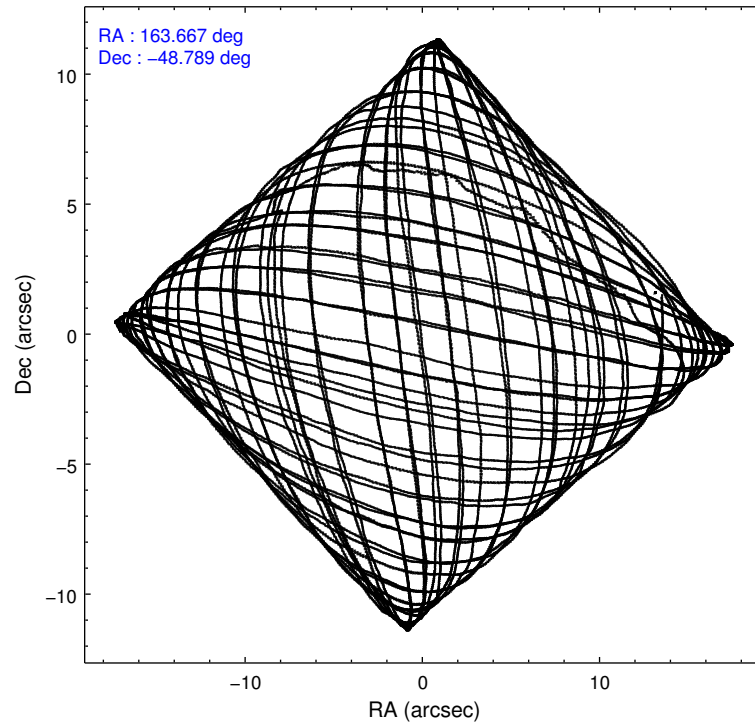
### 2.1.4 Events

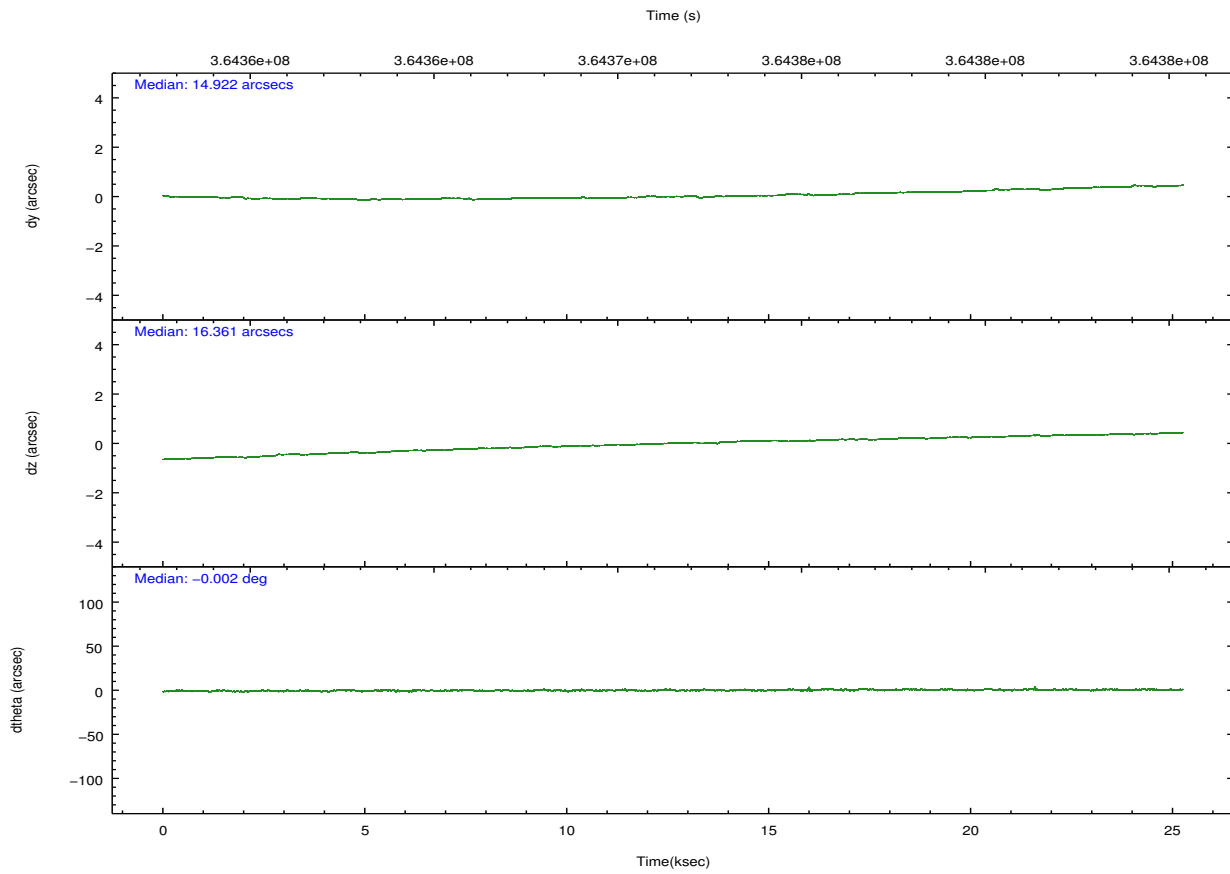
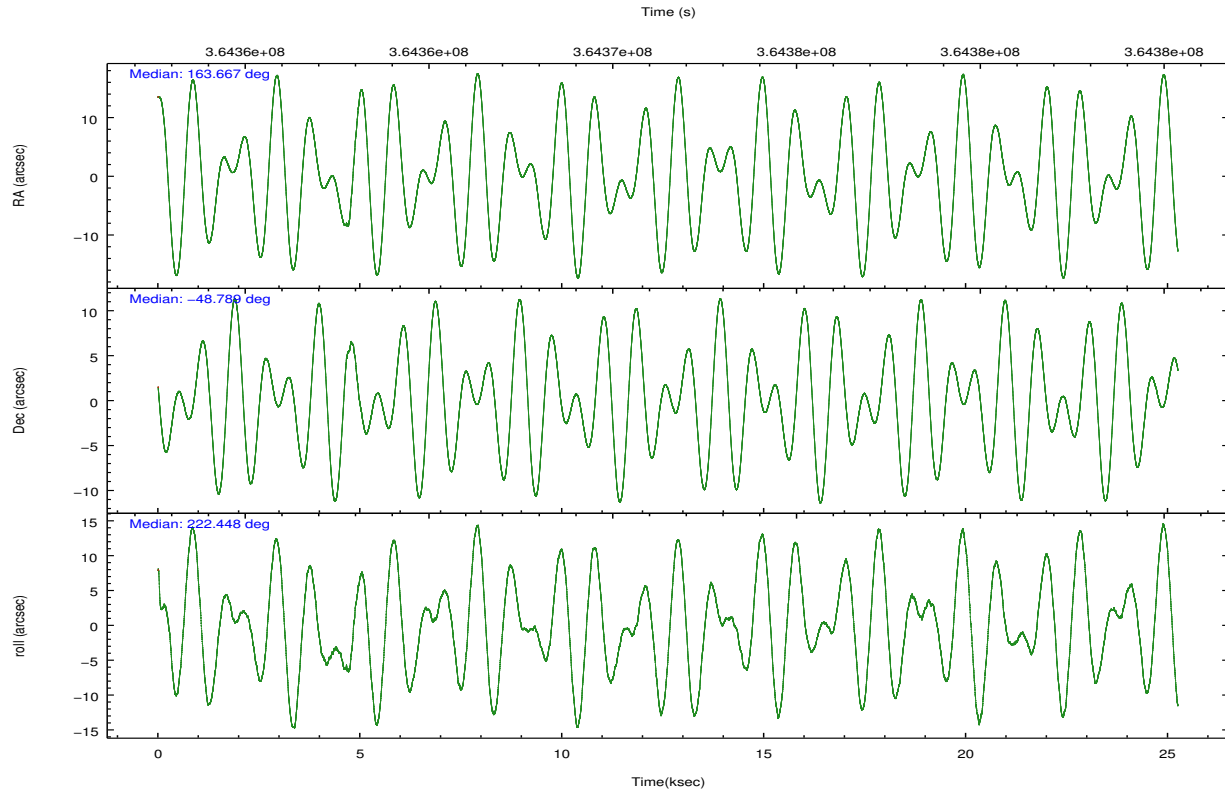
	ccd 2	ccd 3	ccd 5	ccd 6	ccd 7	ccd 8		ccd 2	ccd 3	ccd 5	ccd 6	ccd 7	ccd 8
level 1 events	254891	247142	402653	256750	360705	326120	grade 0 events	13206	13748	16148	12997	12659	23680
rejected events	224271	215945	216457	224454	210392	249027		5%	5%	4%	5%	3%	7%
rejected %	87%	87%	53%	87%	58%	76%	grade 1 events	174	188	1372	173	403	265
								0%	0%	0%	0%	0%	0%
							grade 2 events	6700	6222	58328	7185	31215	17739
								2%	2%	14%	2%	8%	5%
							grade 3 events	2760	2956	6389	2901	12520	8081
								1%	1%	1%	1%	3%	2%
							grade 4 events	2821	2826	6186	2868	12425	7366
								1%	1%	1%	1%	3%	2%
							grade 5 events	10352	12000	27702	12498	34175	16555
								4%	4%	6%	4%	9%	5%
							grade 6 events	5135	5452	99186	6354	81537	20252
								2%	2%	24%	2%	22%	6%
							grade 7 events	213743	203750	187342	211774	175771	232182
								83%	82%	46%	82%	48%	71%

## 2.2 Compared Parameters

Parameter	Planned	Actual	Parameter	Planned	Actual
Instrument	ACIS	ACIS	Obspar format version number	7	7
Detector	ACIS-235678	ACIS-235678	Obspar file type	PREDICTED	ACTUAL
Grating	NONE	NONE	Obspar update status	NONE	UPDATED
Data mode	FAINT	FAINT	CCD I0 on	N	N
Observation mode	POINTING	POINTING	CCD I1 on	N	N
[deg] Pointing RA	163.679123	163.6671685432061	CCD I2 on	O1	Y
[deg] Pointing Dec	-48.762588	-48.78877458555158	CCD I3 on	O2	Y
[deg] Pointing Roll	222.305133	222.4527753790719	CCD S0 on	N	N
[mm] SIM focus pos	-0.684267	-0.6828225247311905	CCD S1 on	O3	Y
[mm] SIM defocus	0	0.001444936568705701	CCD S2 on	Y	Y
[mm] SIM translation stage pos	-190.132523	-190.1425803651734	CCD S3 on	Y	Y
[mm] SIM translation stage offset	0	0.01005778216563158	CCD S4 on	O4	Y
[s] Observation start time (MET)	364359938.184000	364358547.11596	CCD S5 on	N	N
Observation start date	2009-07-19T03:04:32	2009-07-19T02:42:27	Number of optional ACIS chips dropped	0	0
[s] Observation end time (MET)	364384138.184000	364384718.95477	On-chip summing requested	N	N
Observation end date	2009-07-19T09:47:52	2009-07-19T09:58:38	Subarray requested	NONE	NONE
Read mode	TIMED	TIMED	Alternating exposures requested	N	N
			[s] Primary exposure time	0.000000	3.2

## 2.3 Aspect



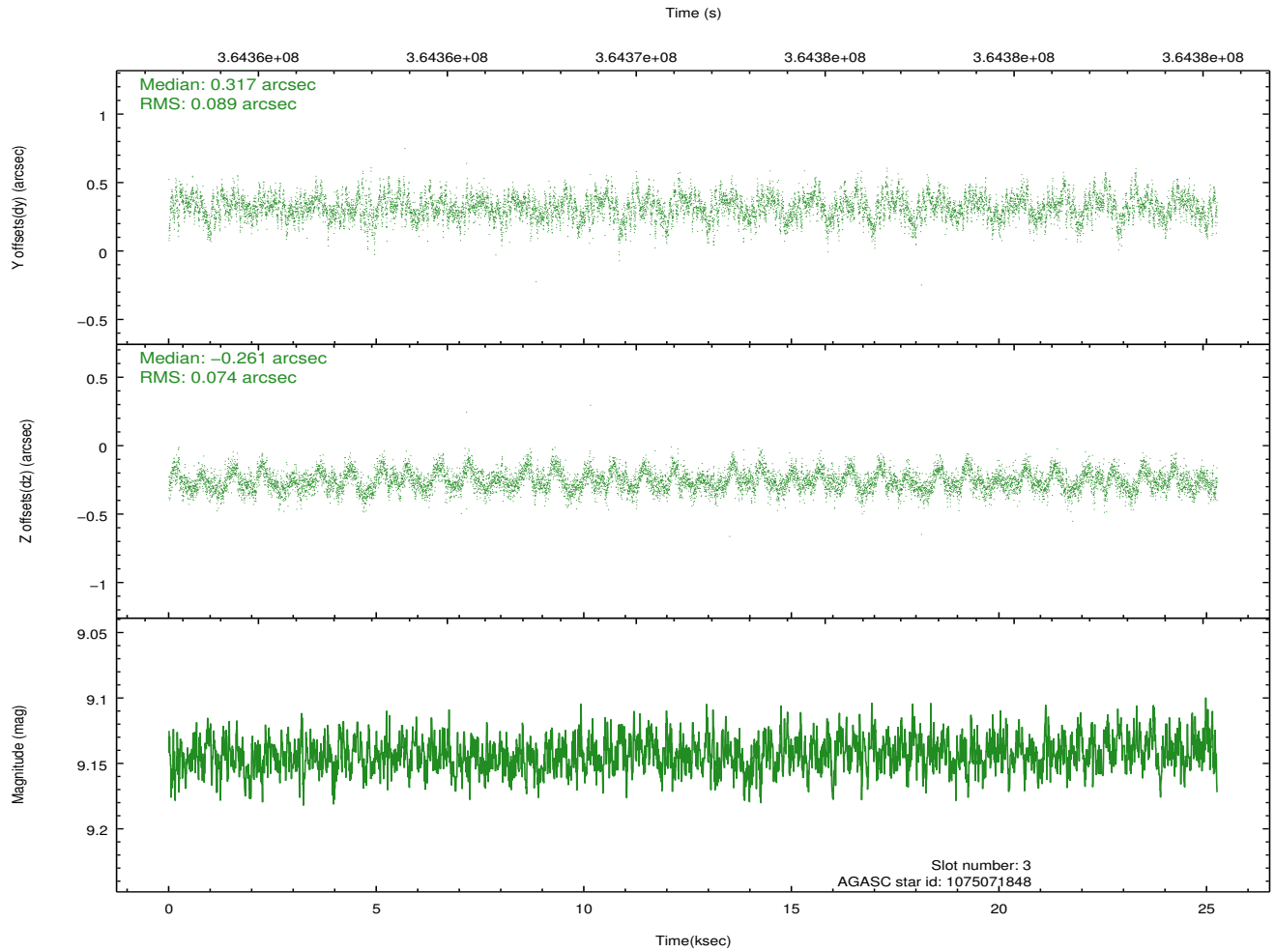
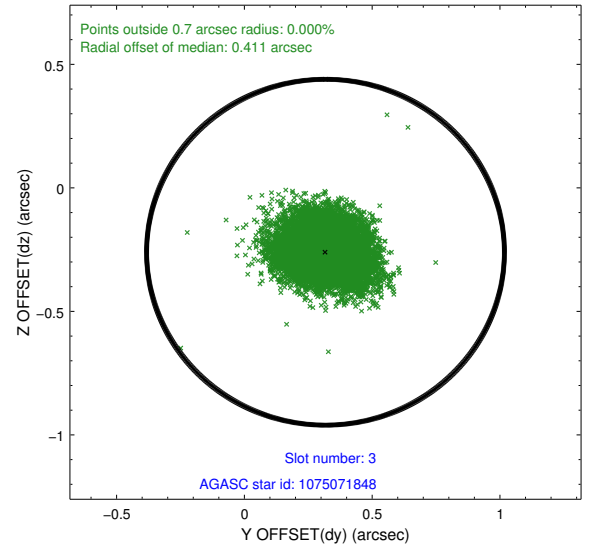
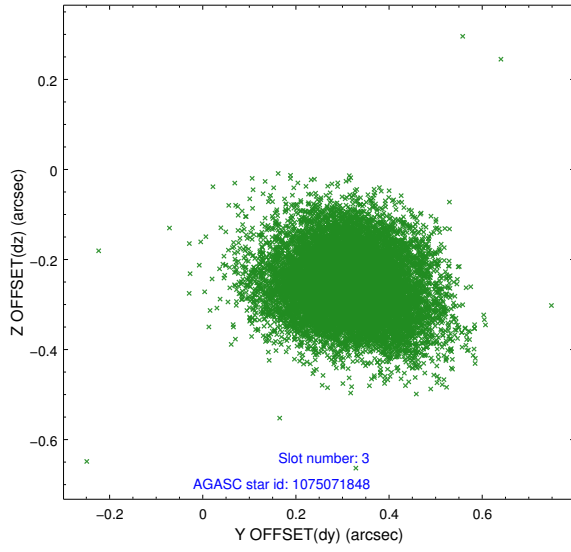


### Slot Statistics

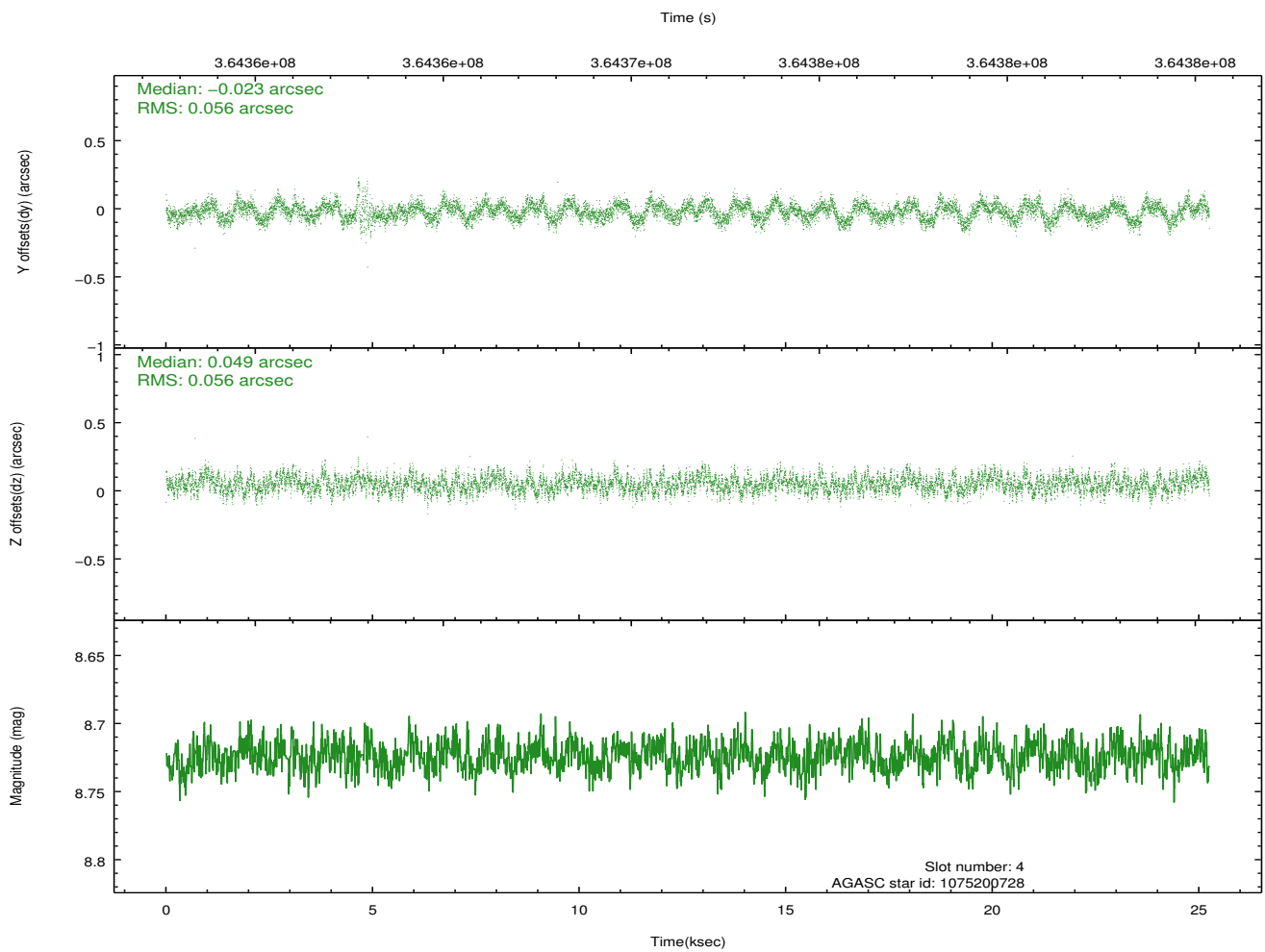
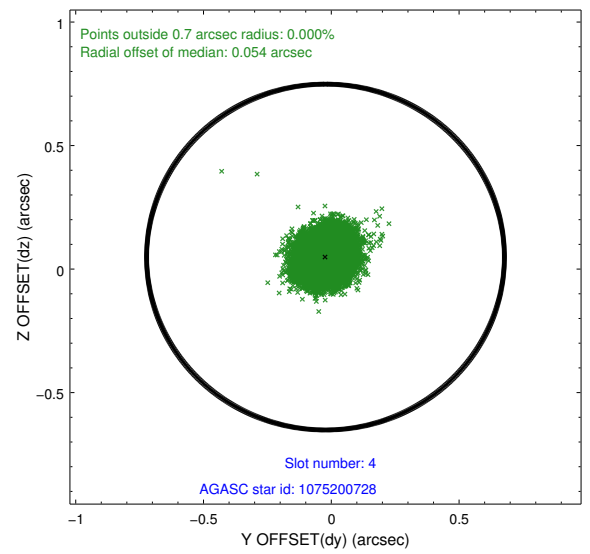
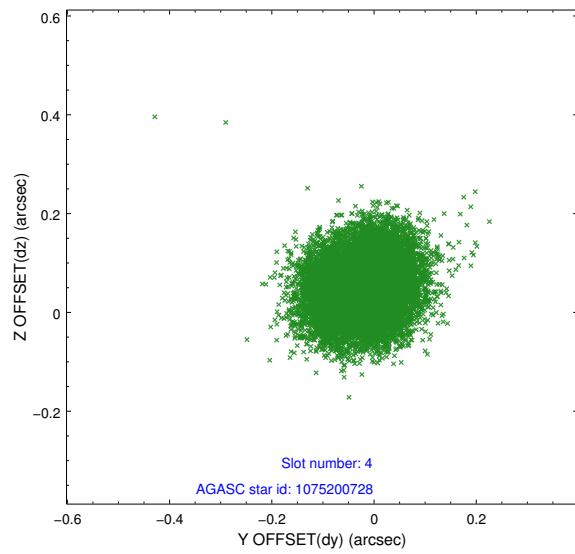
slot	status	id	mag	n_pts	med_dy	med_dz	dr1	dr2	ra	dec	mean_y	mean_z
0	FID	ACIS-S-2	6.93	6158	-0.113	-0.070	0.007	0.014	0.000000	0.000000	-768.12	-1737.73
1	FID	ACIS-S-4	7.02	6159	0.119	0.062	0.007	0.012	0.000000	0.000000	2145.39	170.69
2	FID	ACIS-S-6	7.15	6157	-0.034	0.015	0.008	0.013	0.000000	0.000000	394.16	808.21
3	GUIDE	1075071848	9.14	12307	0.317	-0.261	0.122	0.200	162.283077	-48.700134	2323.04	-2376.37
4	GUIDE	1075200728	8.72	12311	-0.023	0.049	0.085	0.133	164.023893	-48.478595	-1294.93	-201.12
5	GUIDE	1075717160	9.49	12307	-0.007	0.088	0.093	0.152	163.126695	-48.821623	1114.86	-720.39
6	GUIDE	1075718504	7.70	12315	-0.160	-0.018	0.059	0.094	163.526937	-49.165459	1241.66	831.92
7	GUIDE	1075183752	9.29	12301	-0.126	0.139	0.119	0.188	164.141125	-48.357457	-1796.48	-332.17

## 2.4 Star Slots

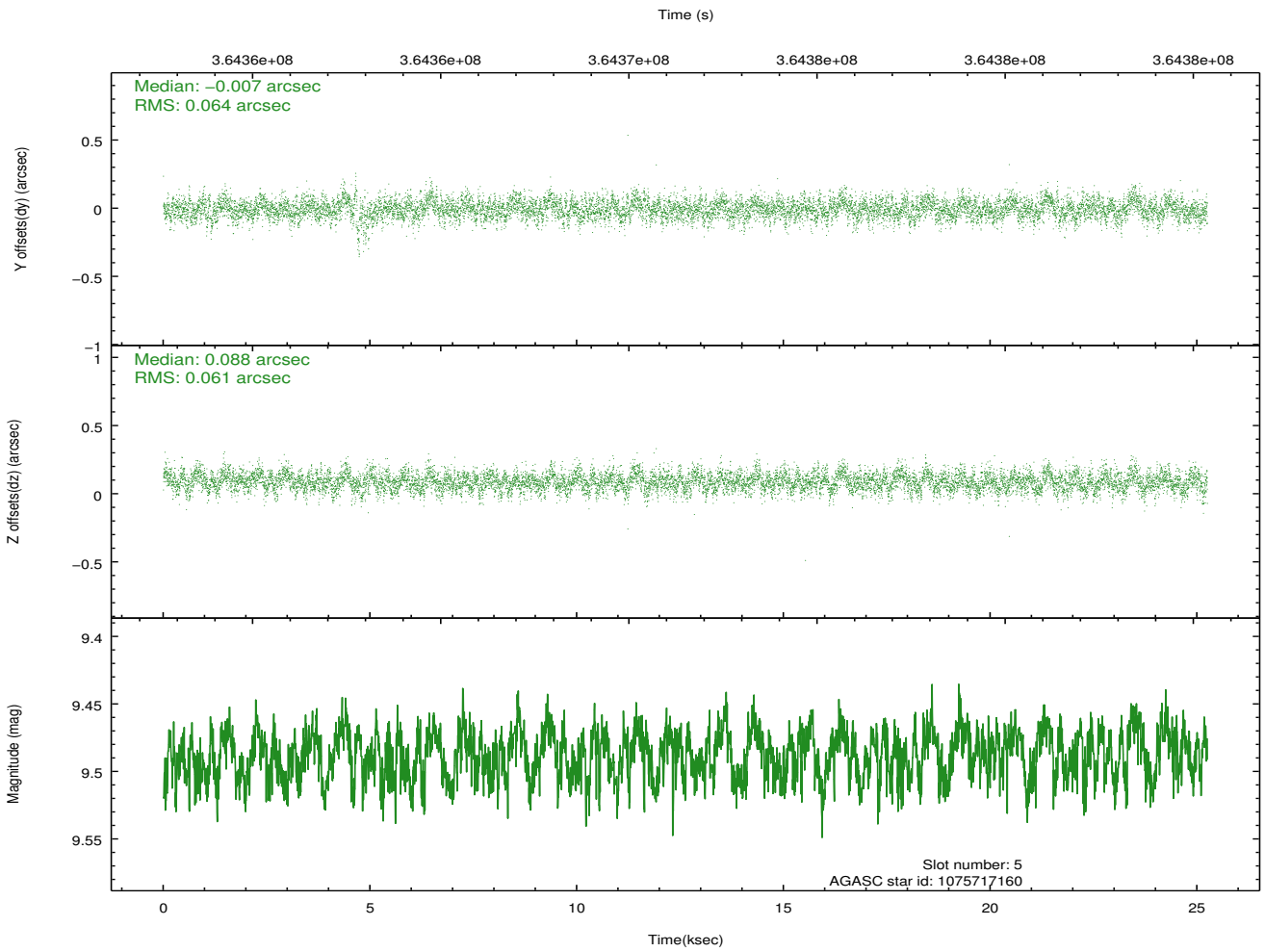
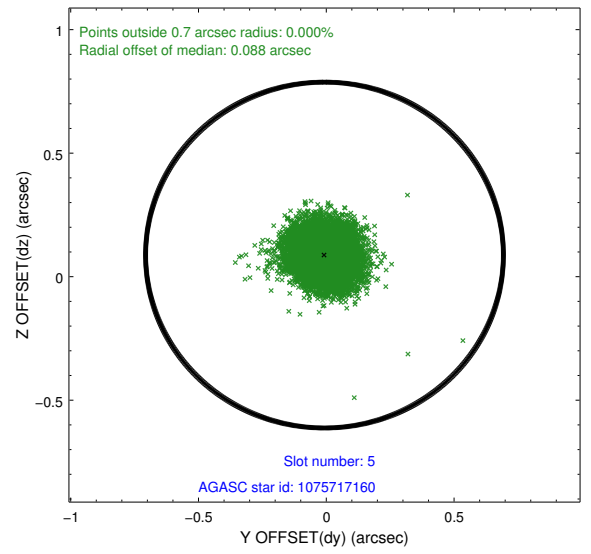
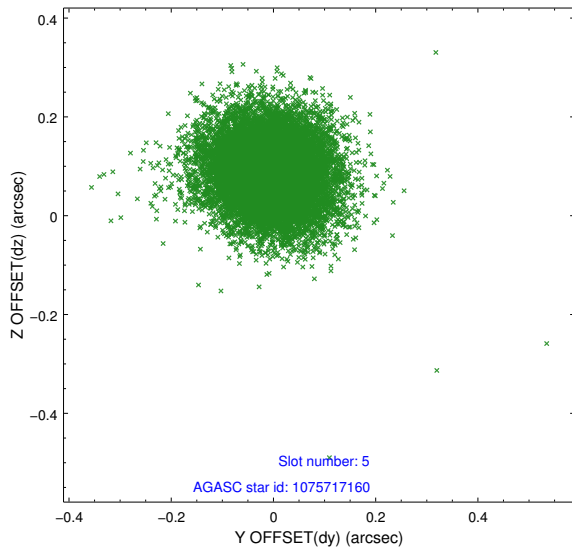
### 2.4.1 Slot 3



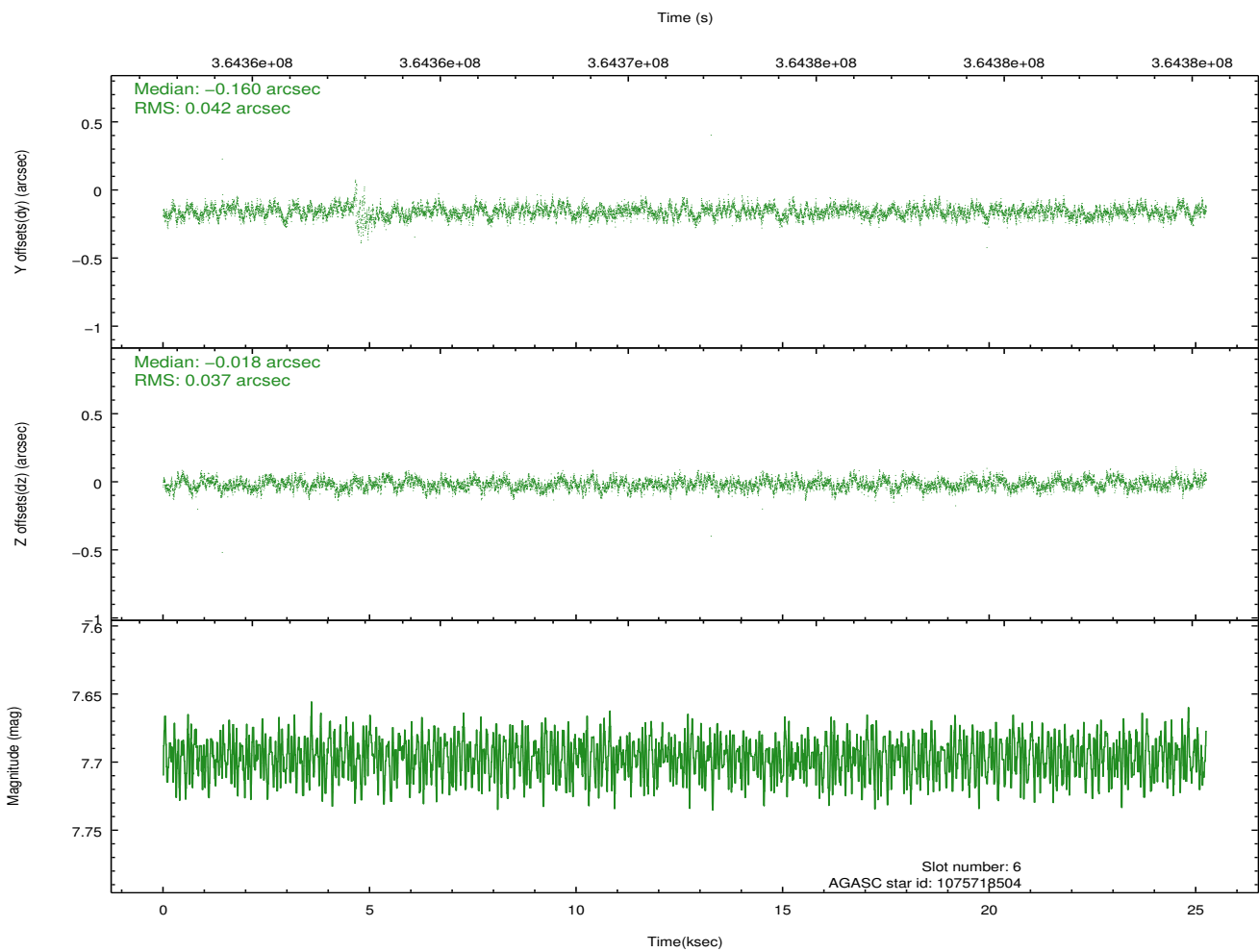
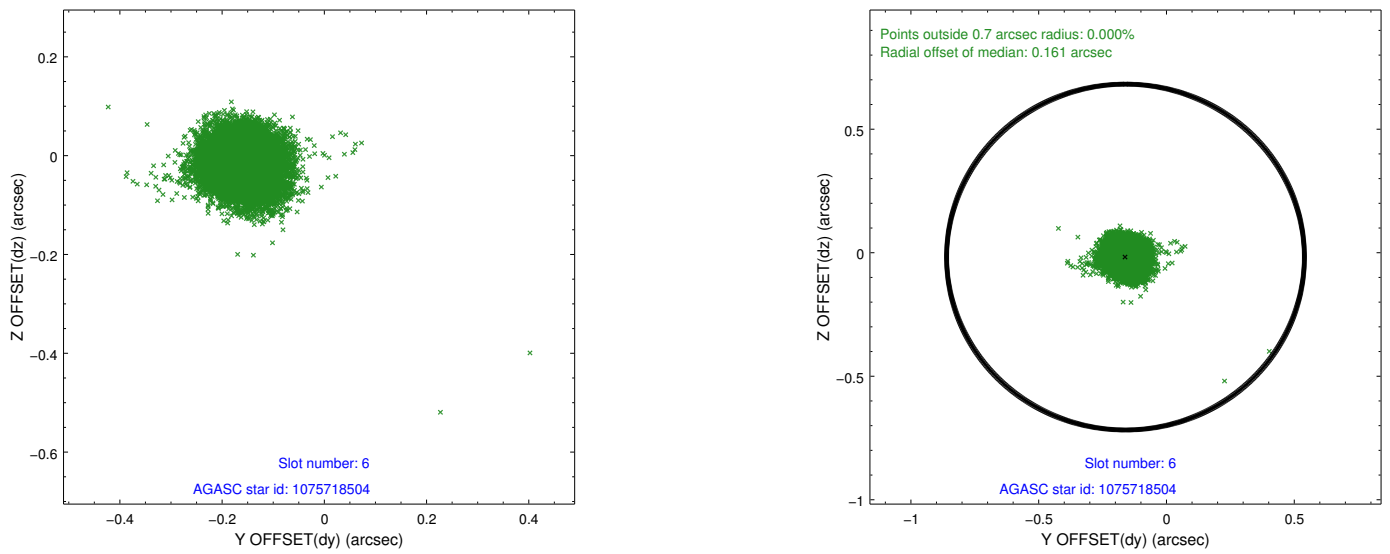
## 2.4.2 Slot 4



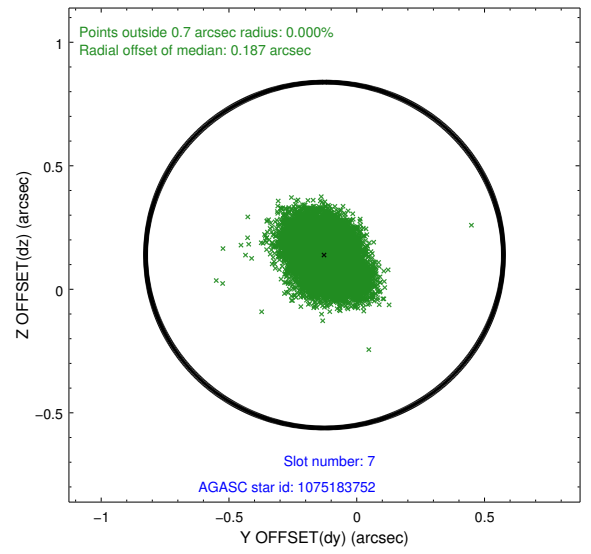
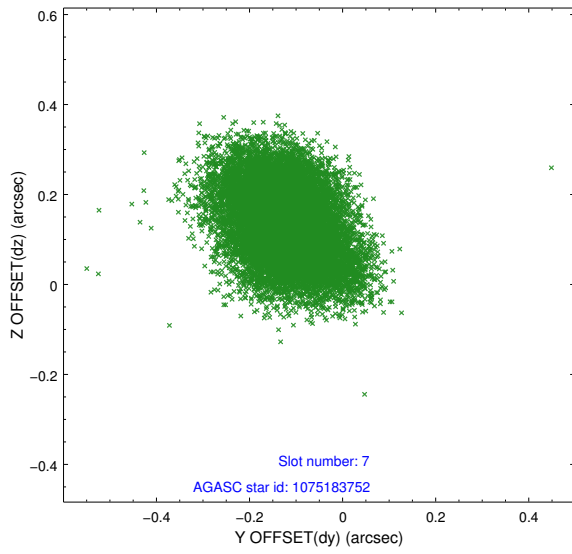
### 2.4.3 Slot 5



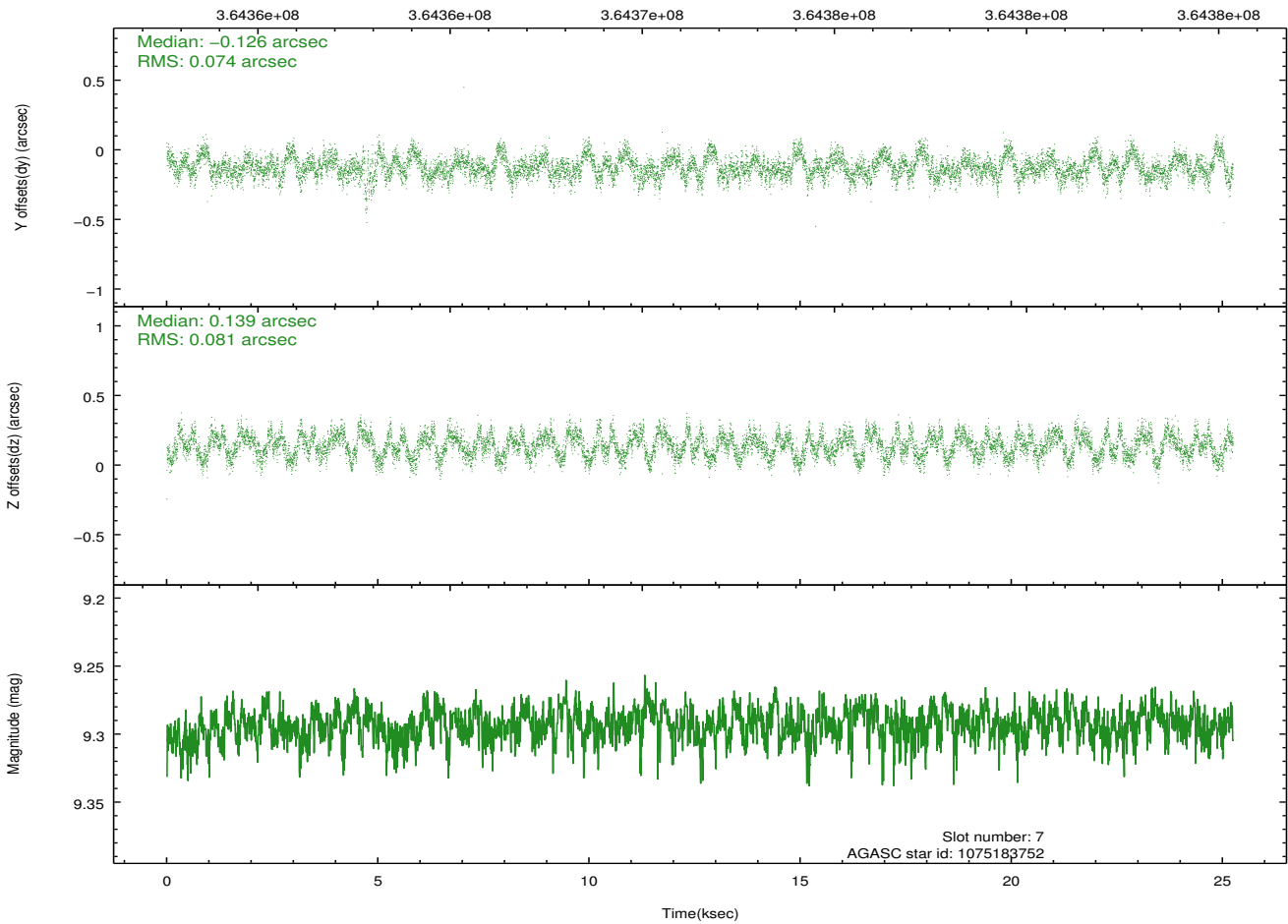
## 2.4.4 Slot 6



### 2.4.5 Slot 7

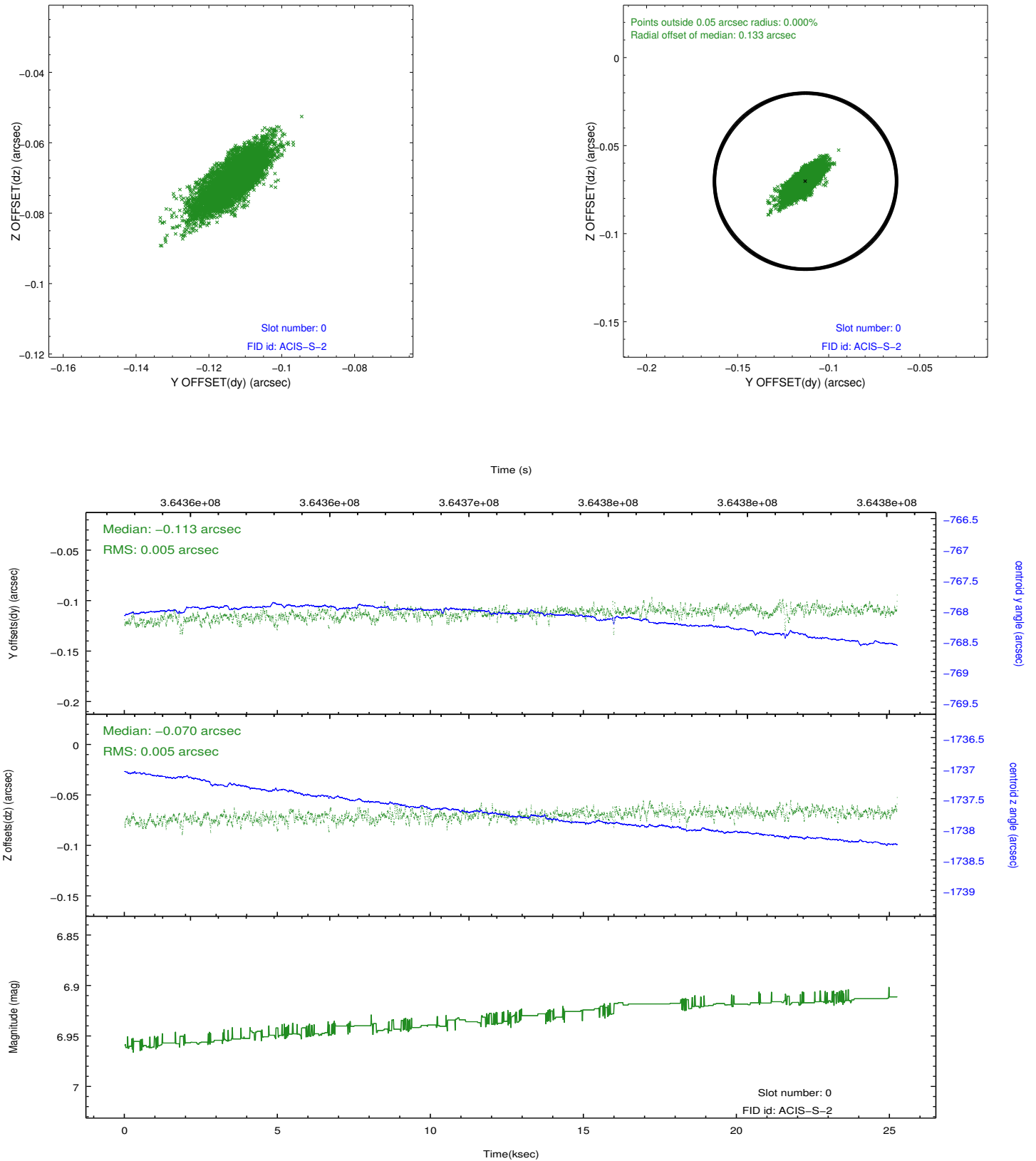


Time (s)

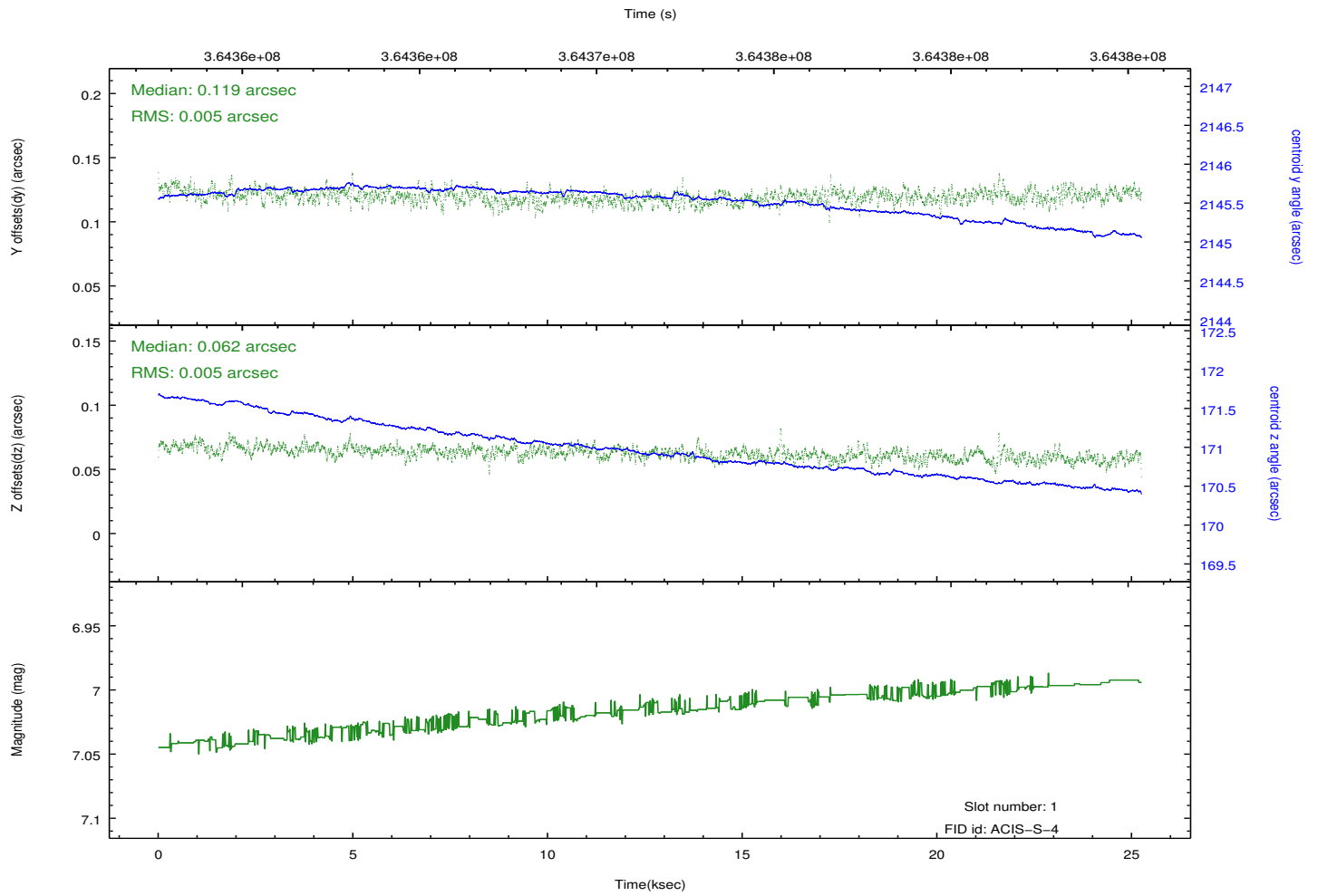
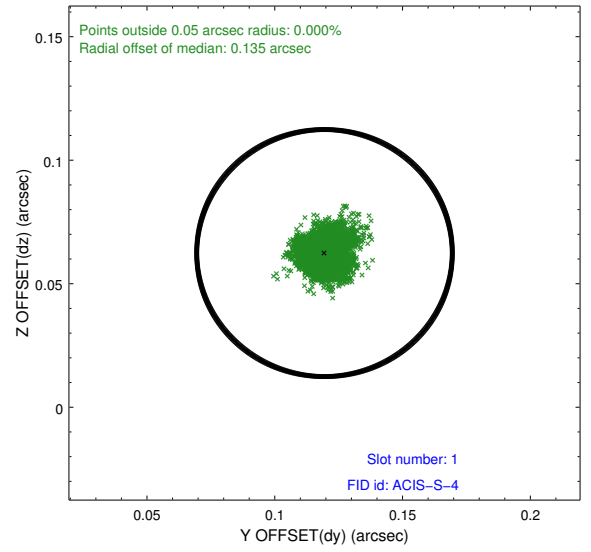
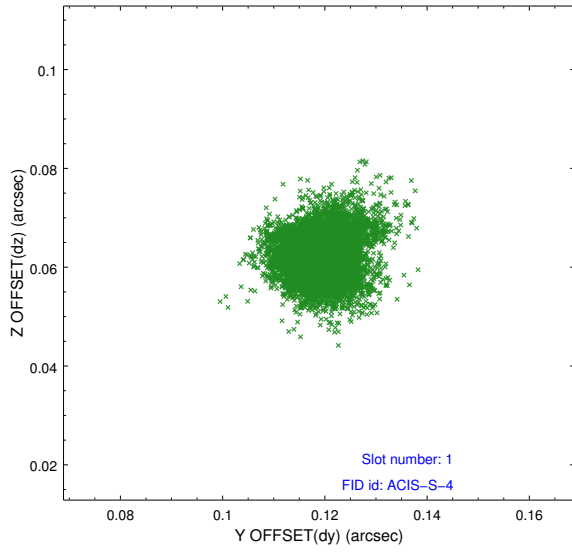


## 2.5 FID Slots

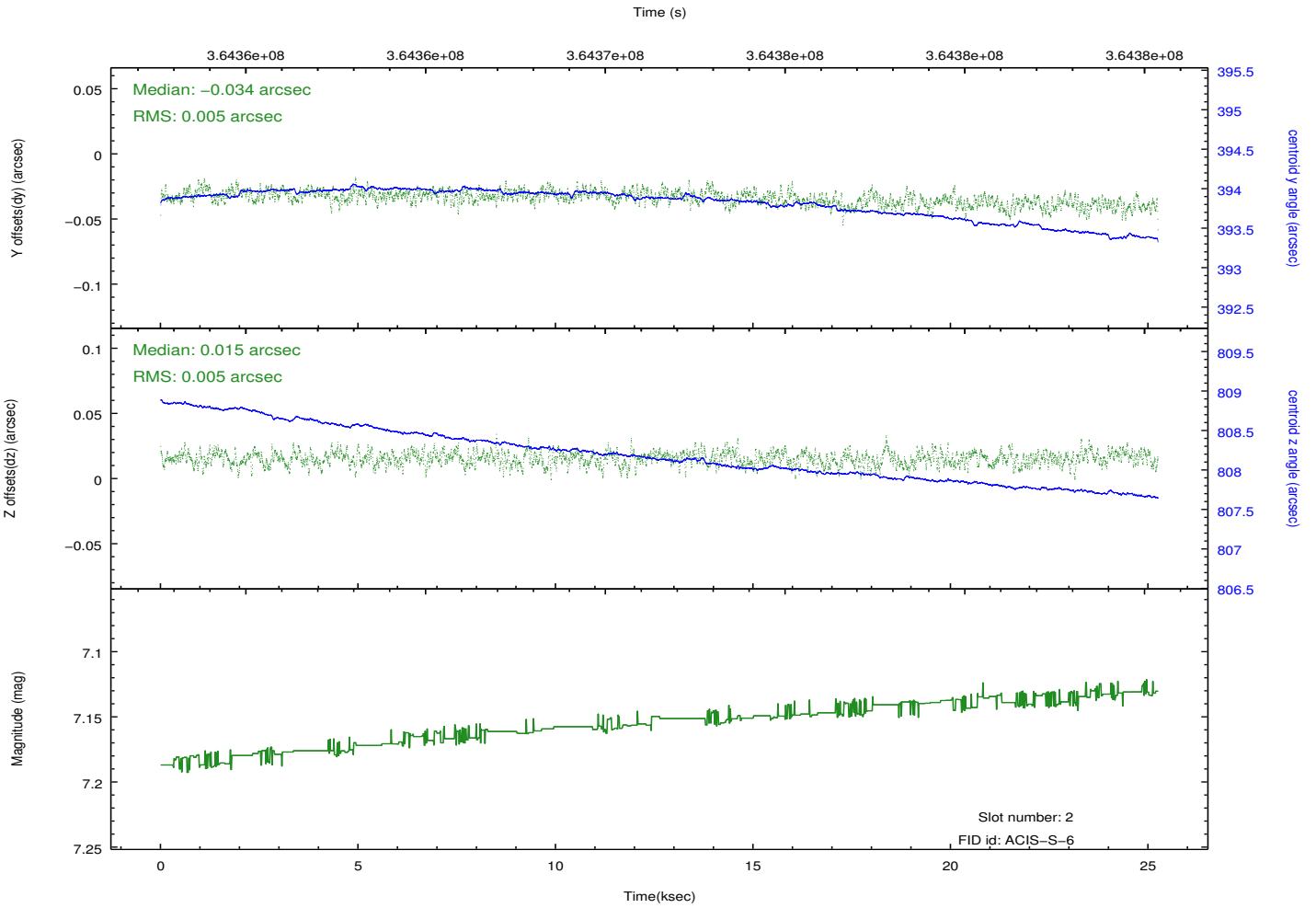
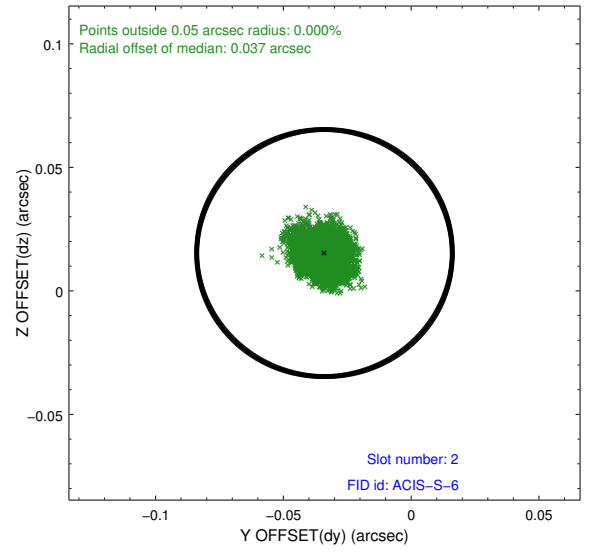
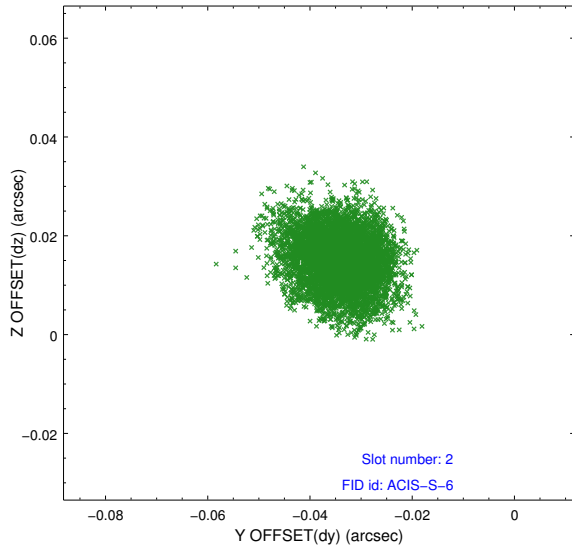
### 2.5.1 Slot 0



## 2.5.2 Slot 1



### 2.5.3 Slot 2



# A Summary

## A.1 Status

V&V Scientist	Jen Lauer
V&V Date (YYYY-MM-DD)	2012.06.13
V&V Edition	1
V&V Disposition and Status	OK
V&V Charge Time	24.149641018629

## A.2 Comments