

V&V Reference Report

L2 ASCDS Version : 8.4.5

Observation 10134 - L2 Version 2
Chandra X-Ray Center

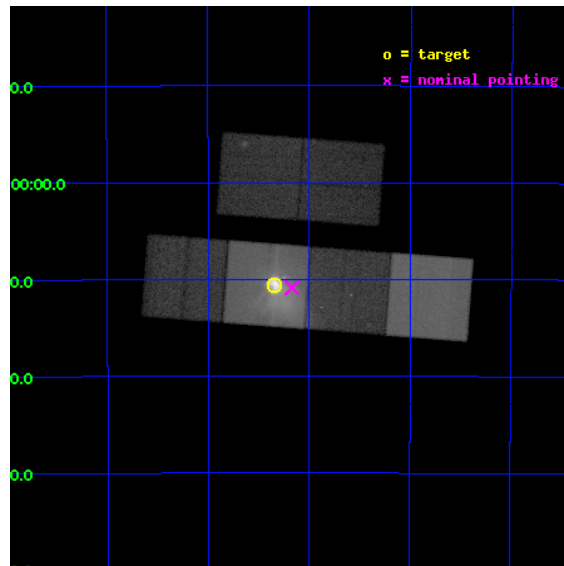
L2 Processing Date : Jun 11 2012

Contents

1	Front	2
2	OBI	3
2.1	OBI	3
2.1.1	Images	3
2.1.2	Bias	3
2.1.3	Parameters	4
2.1.4	Events	4
2.2	Compared Parameters	5
2.3	Aspect	6
2.4	Star Slots	9
2.4.1	Slot 3	9
2.4.2	Slot 4	10
2.4.3	Slot 5	11
2.4.4	Slot 6	12
2.4.5	Slot 7	13
2.5	FID Slots	14
2.5.1	Slot 0	14
2.5.2	Slot 1	15
2.5.3	Slot 2	16
A	Summary	17
A.1	Status	17
A.2	Comments	17

1 Front

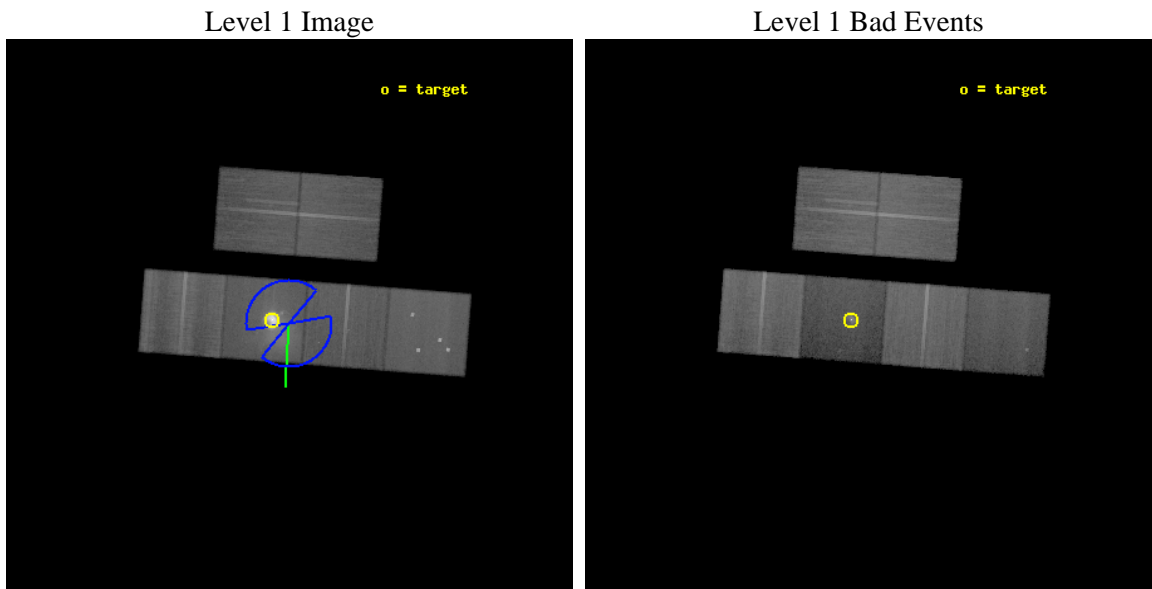
seq_num	501061	Sequence number
obs_id	10134	Observation id
title	The Unique Dynamical Vela Pulsar Wind Nebula	Proposal title
observer	Dr. George Pavlov	Principal investigator
object	Vela PWN	Source name
dtycycle	0	
cycle	P	events from which exps? Prim/Second/Both
ra_targ	128.83625	Observer's specified target RA [deg]
dec_targ	-45.176583	Observer's specified target Dec [deg]
ra_nom	128.79295966991	Nominal RA [deg]
dec_nom	-45.181385573471	Nominal Dec [deg]
roll_nom	184.33931705853	Nominal Roll [deg]
revision	2	Processing version of data
ontime	38540.133050203	Sum of GTIs [s]
livetime	38052.11467944	Livetime [s]
ontime2	38540.174090207	Sum of GTIs [s]
ontime3	38540.009930193	Sum of GTIs [s]
ontime5	38540.0920102	Sum of GTIs [s]
ontime6	38536.809999883	Sum of GTIs [s]
ontime7	38540.133050203	Sum of GTIs [s]
ontime8	38539.96889019	Sum of GTIs [s]
l2events	1027034	Number of level 2 events



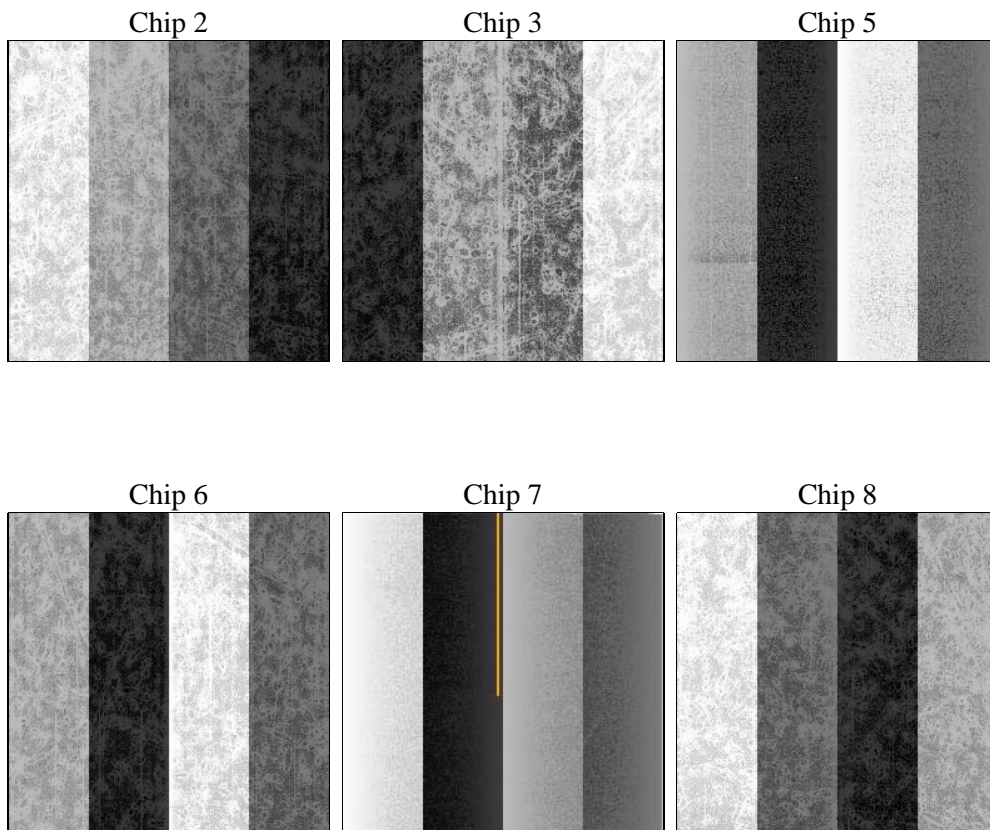
2 OBI

2.1 OBI

2.1.1 Images



2.1.2 Bias



2.1.3 Parameters

obi_num	0	Obi number	sched_exp_time	38500.000000	[s] Scheduled observation exposure time
ascdsver	8.4.5	Processing system revision	ontime	38540.133050203	Sum of GTIs [s]
caldbver	4.4.10	 	ontime2	38540.174090207	Sum of GTIs [s]
date	2012-06-11T00:39:36	Date and time of file creation	ontime3	38540.009930193	Sum of GTIs [s]
revision	2	Processing version of data	ontime5	38540.0920102	Sum of GTIs [s]
			ontime6	38536.809999883	Sum of GTIs [s]
			ontime7	38540.133050203	Sum of GTIs [s]
			ontime8	38539.96889019	Sum of GTIs [s]
			l1events	2531914	Number of level 1 events

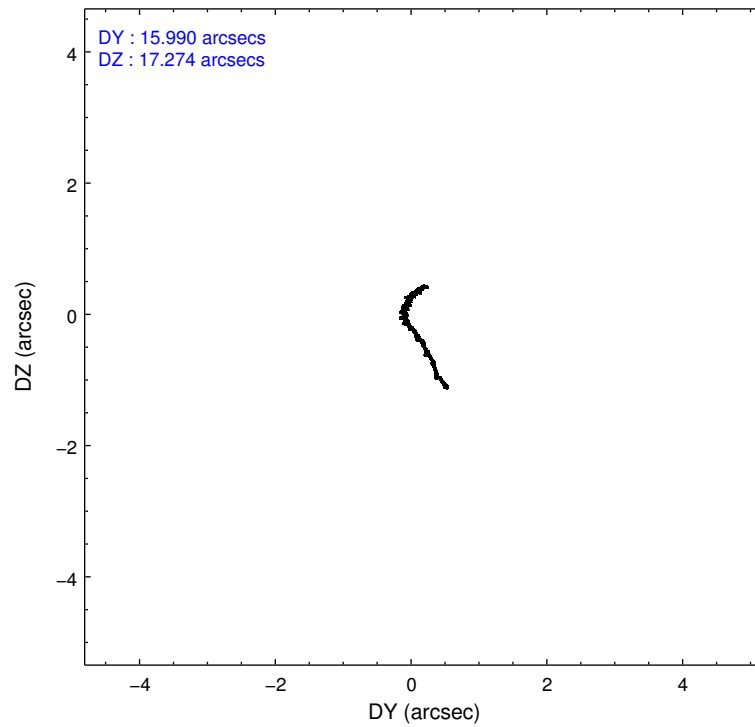
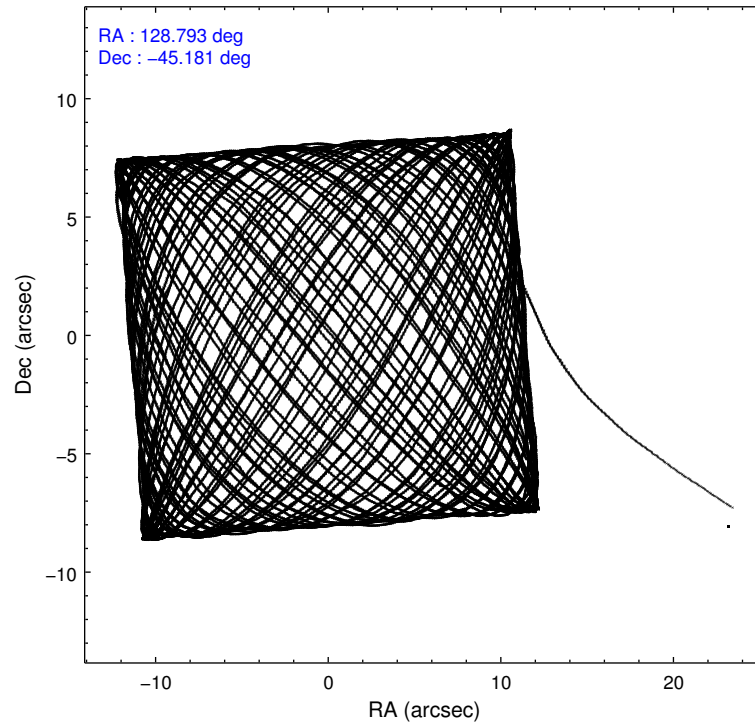
2.1.4 Events

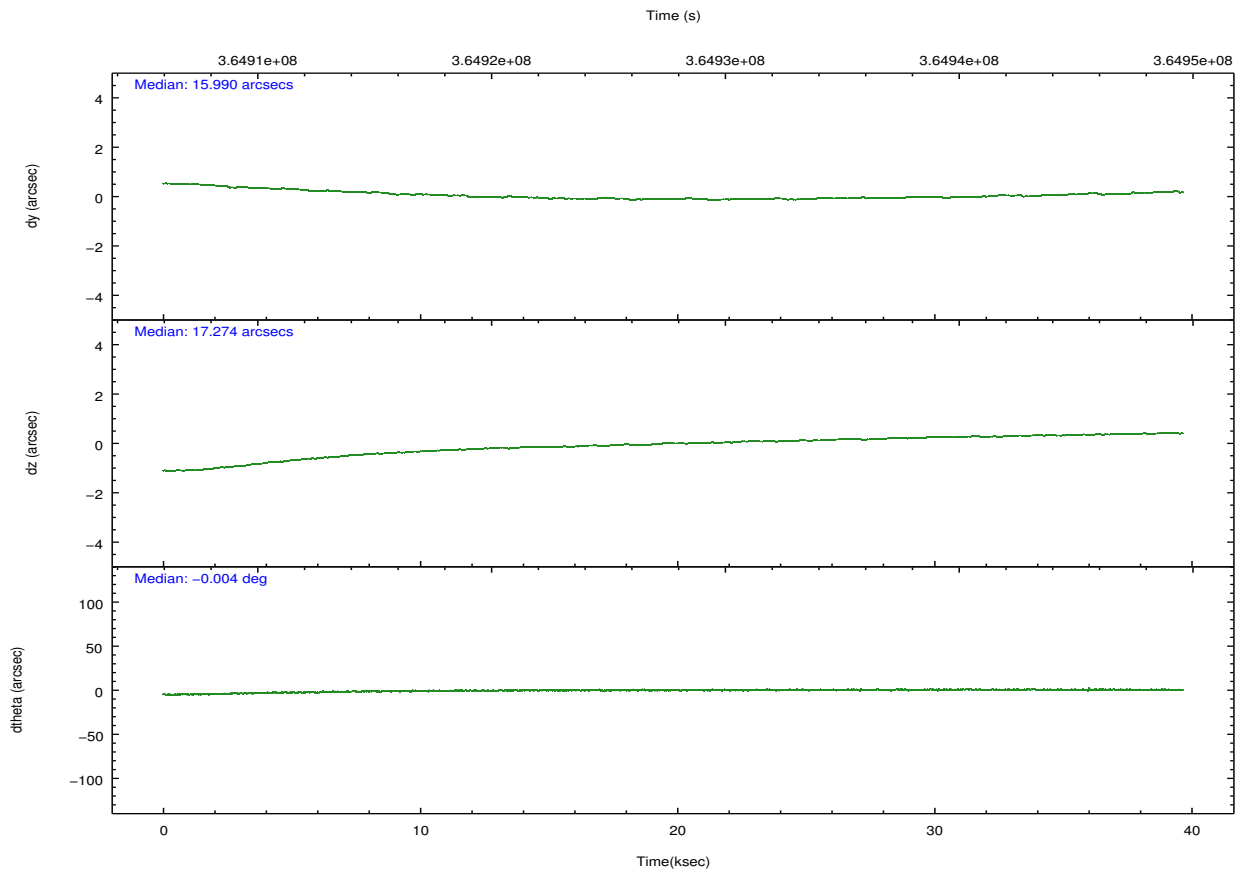
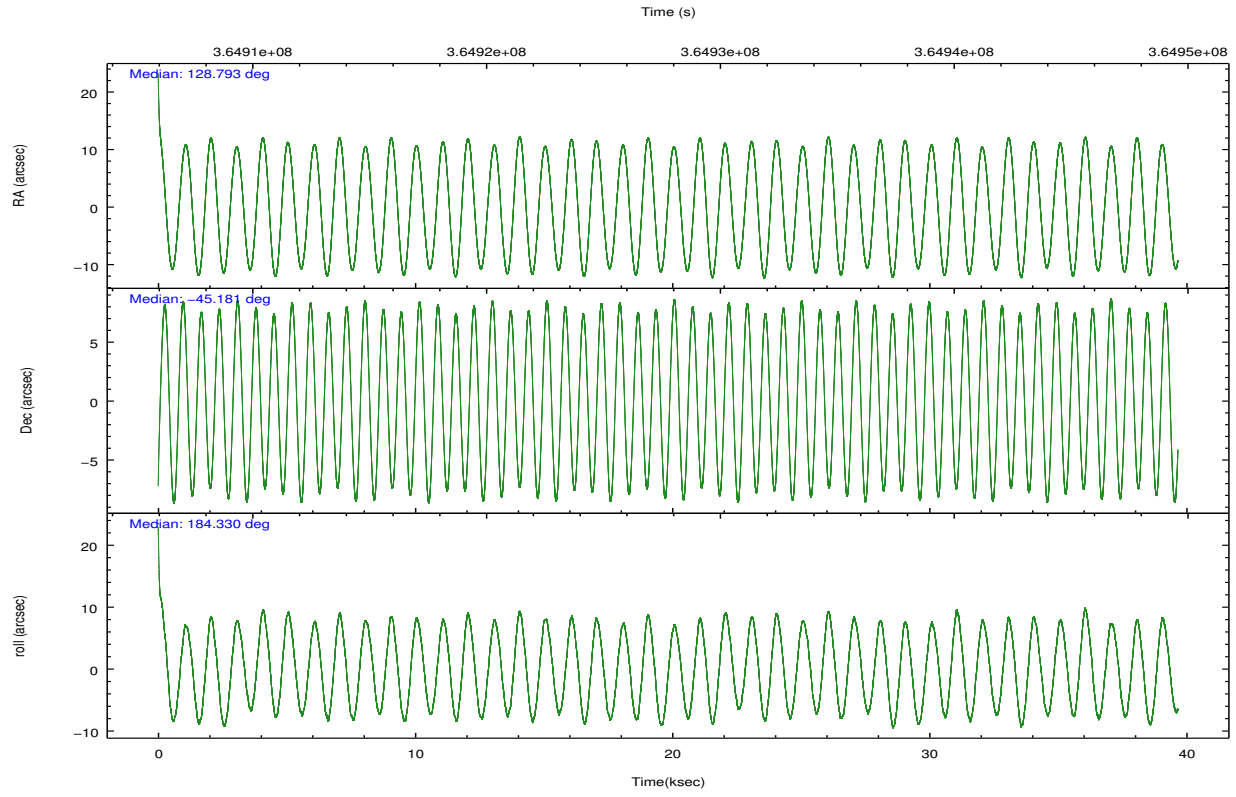
	ccd 2	ccd 3	ccd 5	ccd 6	ccd 7	ccd 8		ccd 2	ccd 3	ccd 5	ccd 6	ccd 7	ccd 8
level 1 events	341562	311224	403022	338661	743831	393614	grade 0 events	25862	27100	69352	44426	177604	48937
rejected events	296194	265686	143152	270656	127105	268351		7%	8%	17%	13%	23%	12%
rejected %	86%	85%	35%	79%	17%	68%	grade 1 events	282	258	1436	368	1673	463
								0%	0%	0%	0%	0%	0%
							grade 2 events	8360	7121	71453	9705	155443	25752
								2%	2%	17%	2%	20%	6%
							grade 3 events	3048	3346	13103	3848	66588	11845
								0%	1%	3%	1%	8%	3%
							grade 4 events	3272	3251	12697	3979	65797	10719
								0%	1%	3%	1%	8%	2%
							grade 5 events	6909	8275	27113	8208	30515	13450
								2%	2%	6%	2%	4%	3%
							grade 6 events	4837	4730	93296	6064	151400	28020
								1%	1%	23%	1%	20%	7%
							grade 7 events	288992	257143	114572	262063	94811	254428
								84%	82%	28%	77%	12%	64%

2.2 Compared Parameters

Parameter	Planned	Actual	Parameter	Planned	Actual
Instrument	ACIS	ACIS	Obspar format version number	7	7
Detector	ACIS-235678	ACIS-235678	Obspar file type	PREDICTED	ACTUAL
Grating	NONE	NONE	Obspar update status	NONE	UPDATED
Data mode	FAINT	FAINT	CCD I0 on	N	N
Observation mode	POINTING	POINTING	CCD I1 on	N	N
[deg] Pointing RA	128.824670	128.7929596699085	CCD I2 on	O2	Y
[deg] Pointing Dec	-45.165652	-45.18138557347103	CCD I3 on	Y	Y
[deg] Pointing Roll	184.205185	184.3393170585311	CCD S0 on	N	N
[deg] Roll angle	150.000000	150.000000	CCD S1 on	O1	Y
[deg] Roll tolerance	70.000000	70.000000	CCD S2 on	Y	Y
Roll constraint allows 180D rotation	Y	Y	CCD S3 on	Y	Y
[mm] SIM focus pos	-0.684267	-0.6828225247311905	CCD S4 on	Y	Y
[mm] SIM defocus	0	0.001444936568705701	CCD S5 on	N	N
[mm] SIM translation stage pos	-190.132523	-190.1400660498719	Number of optional ACIS chips dropped	0	0
[mm] SIM translation stage offset	0	0.00754346686406393	On-chip summing requested	N	N
[s] Observation start time (MET)	364909085.184000	364906815.54341	Subarray requested	NONE	NONE
Observation start date	2009-07-25T11:36:59	2009-07-25T11:00:15	Alternating exposures requested	N	N
[s] Observation end time (MET)	364947585.184000	364948098.44547	[s] Primary exposure time	0.000000	3.2
Observation end date	2009-07-25T22:18:39	2009-07-25T22:28:18			
Read mode	TIMED	TIMED			

2.3 Aspect



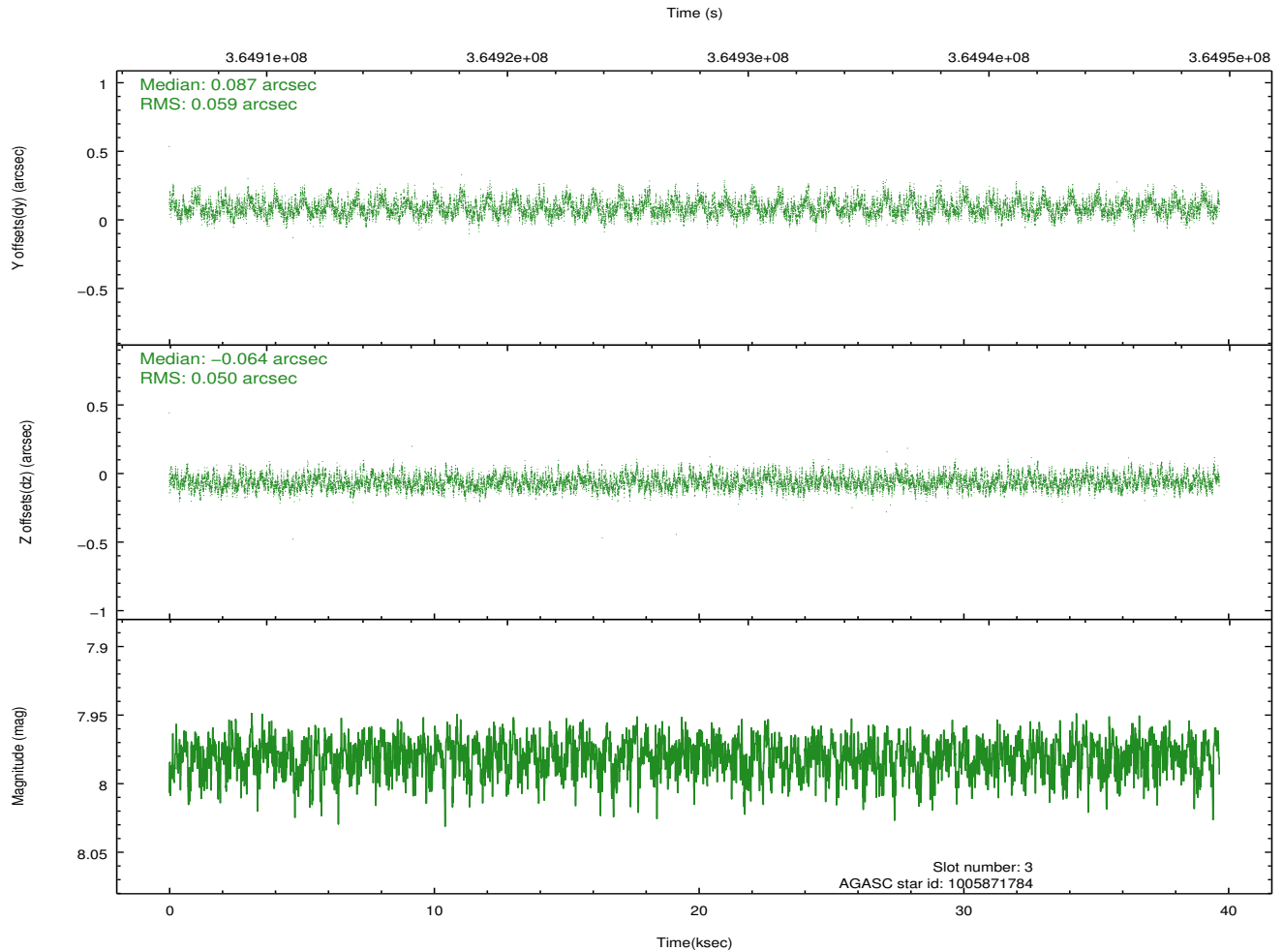
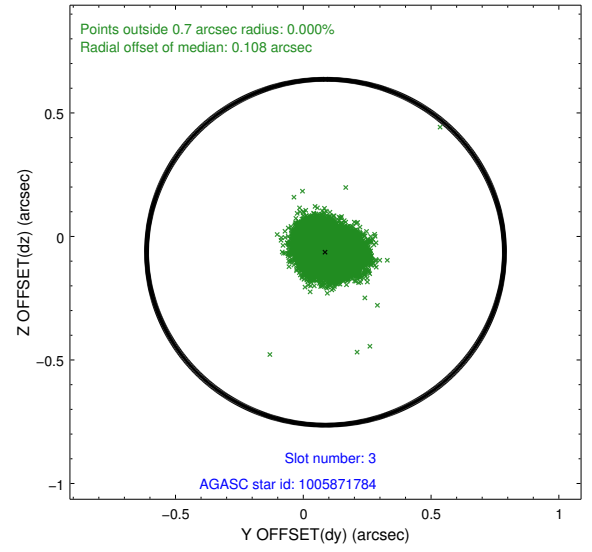
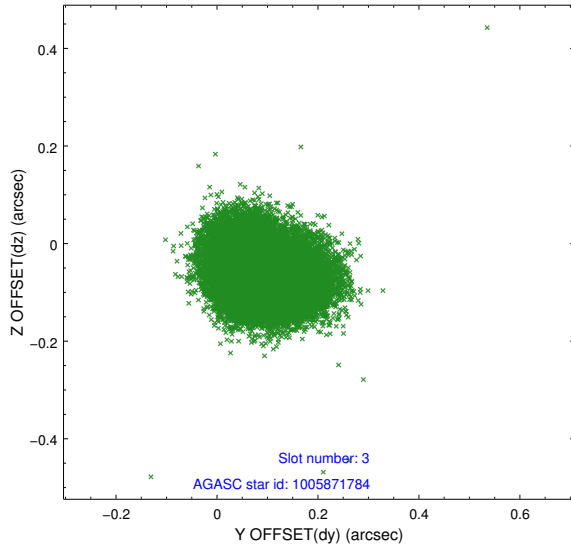


Slot Statistics

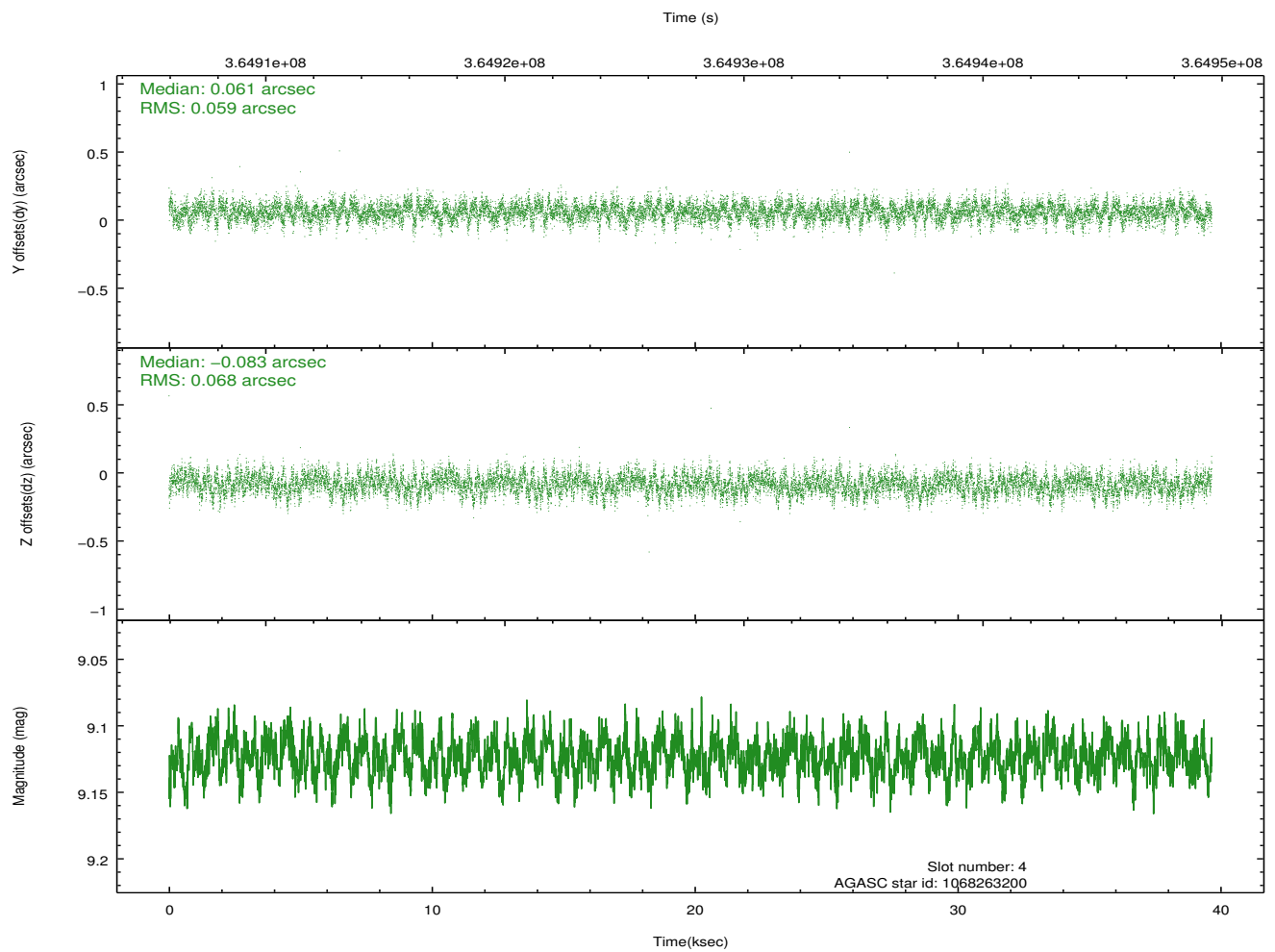
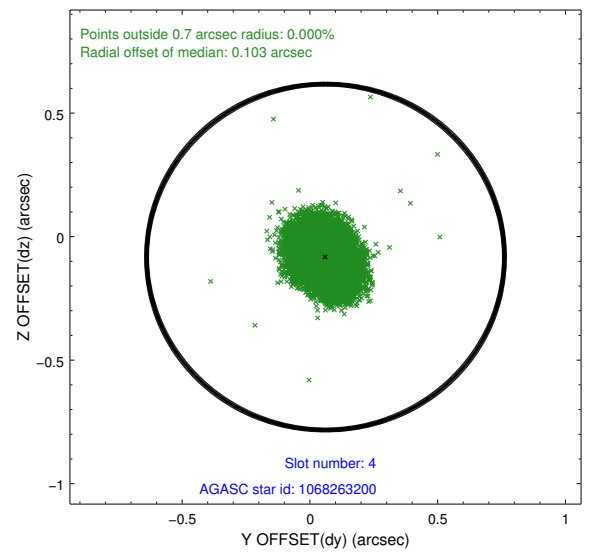
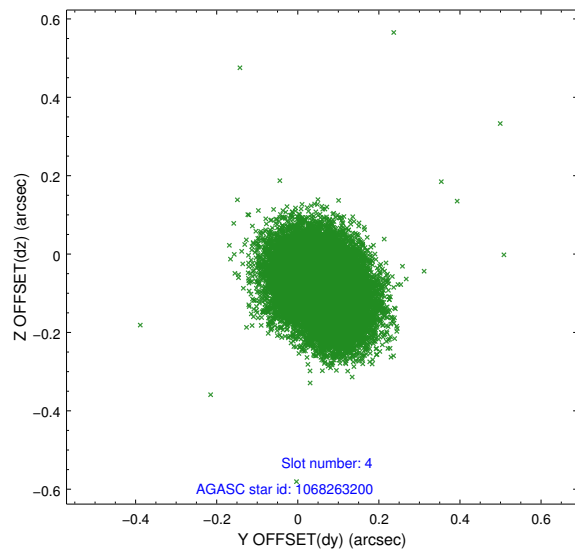
slot	status	id	mag	n_pts	med_dy	med_dz	dr1	dr2	ra	dec	mean_y	mean_z
0	FID	ACIS-S-1	6.94	9674	0.058	-0.048	0.020	0.029	0.000000	0.000000	927.00	-1734.31
1	FID	ACIS-S-4	6.95	9672	0.076	0.011	0.019	0.035	0.000000	0.000000	2144.47	169.87
2	FID	ACIS-S-5	6.98	9674	-0.161	0.051	0.012	0.020	0.000000	0.000000	-1822.03	163.60
3	GUIDE	1005871784	7.98	19337	0.087	-0.064	0.083	0.130	128.533947	-44.544833	580.86	-2282.17
4	GUIDE	1068263200	9.12	19328	0.061	-0.083	0.095	0.155	128.222628	-45.344390	1567.11	535.72
5	GUIDE	1068270344	8.49	19338	-0.032	0.061	0.070	0.114	128.097487	-45.785157	1985.03	2099.04
6	GUIDE	1005862984	8.78	19327	-0.133	0.084	0.074	0.123	128.482680	-44.577316	720.12	-2174.45
7	GUIDE	1005861048	8.39	19337	0.015	-0.002	0.085	0.140	128.669106	-44.528323	230.71	-2317.13

2.4 Star Slots

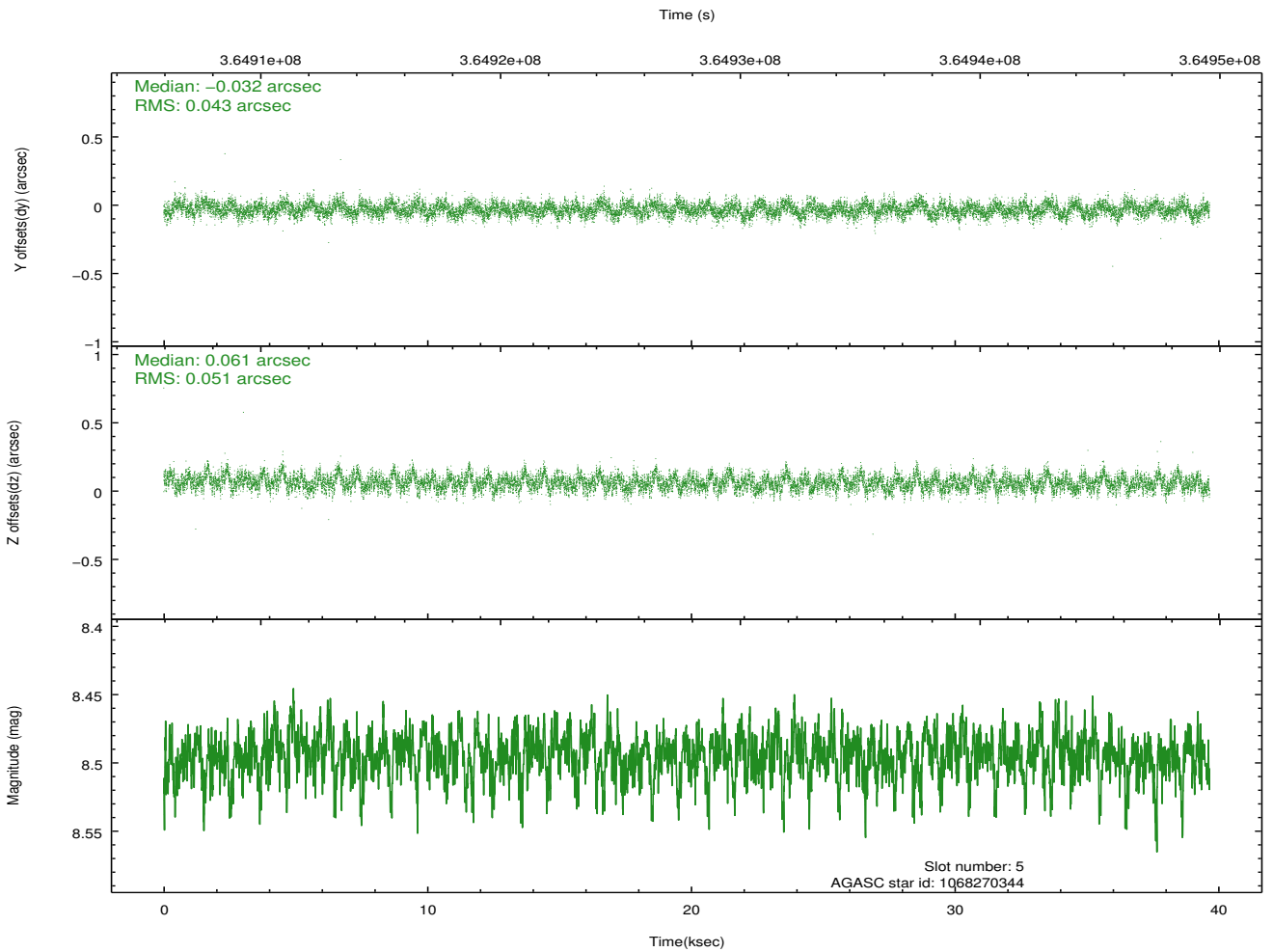
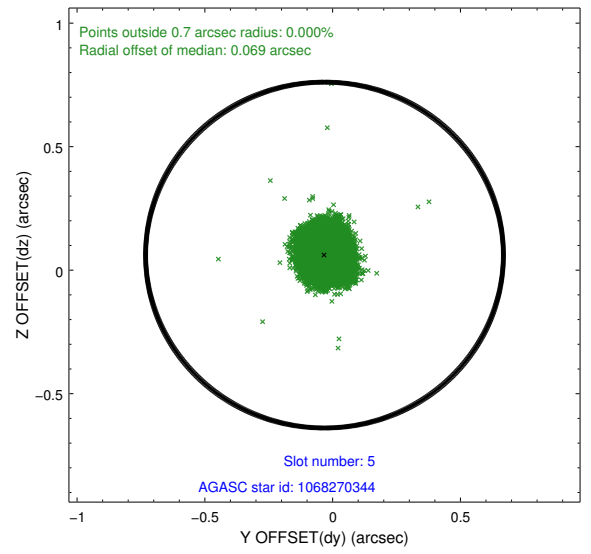
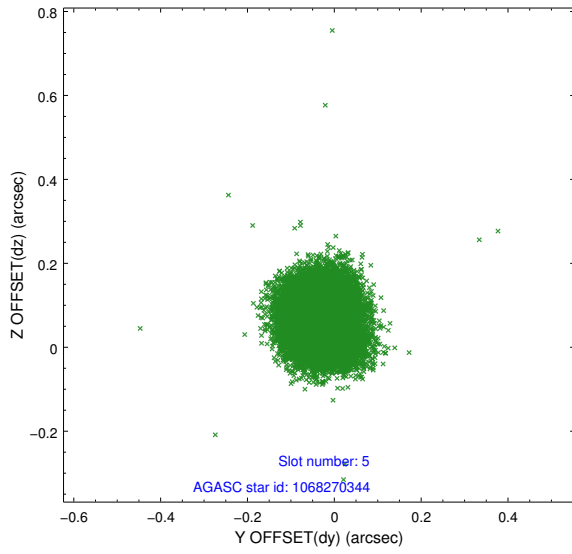
2.4.1 Slot 3



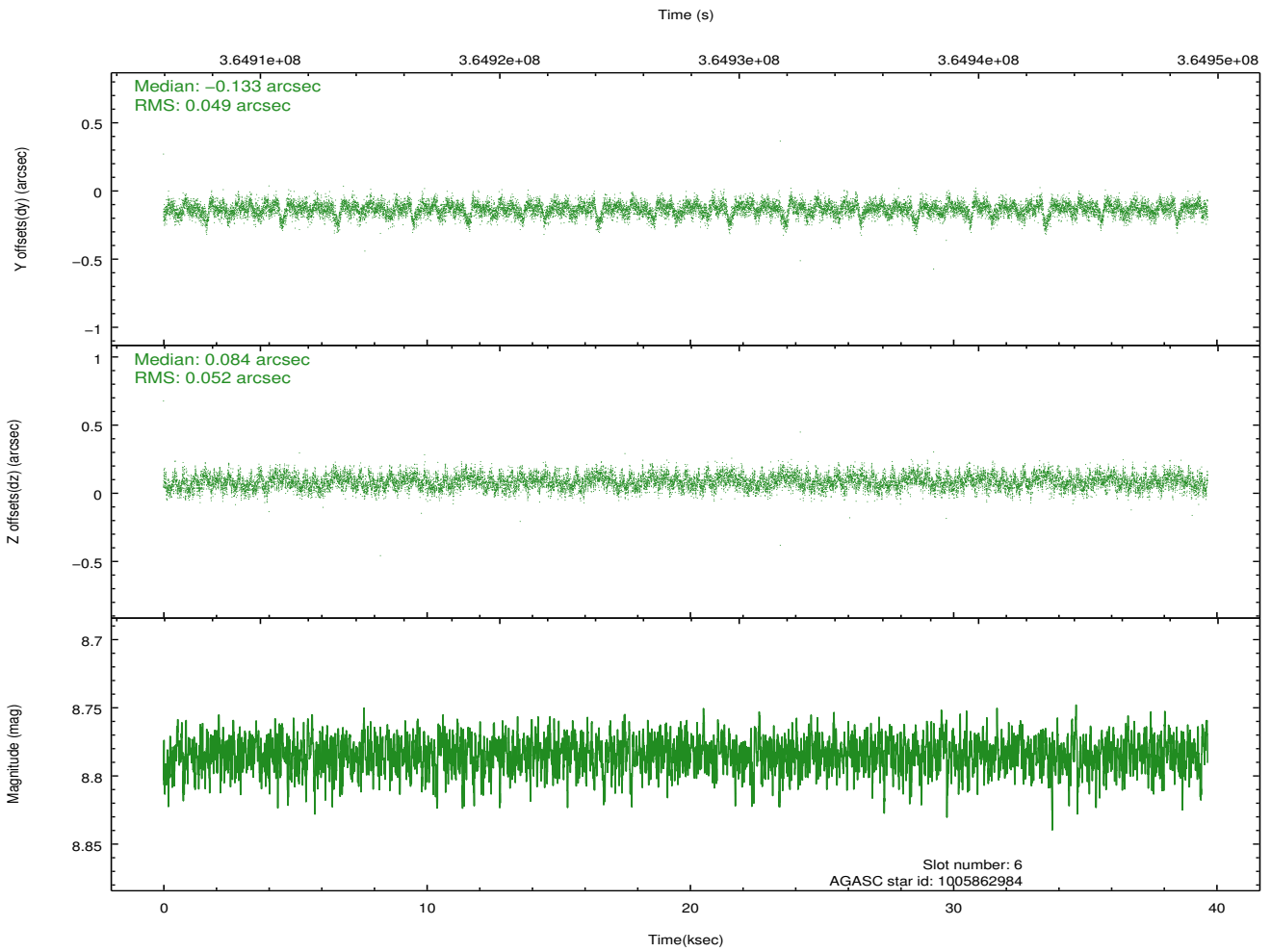
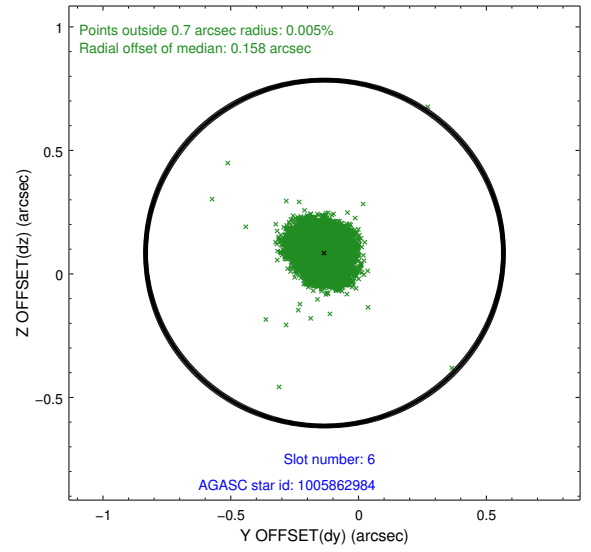
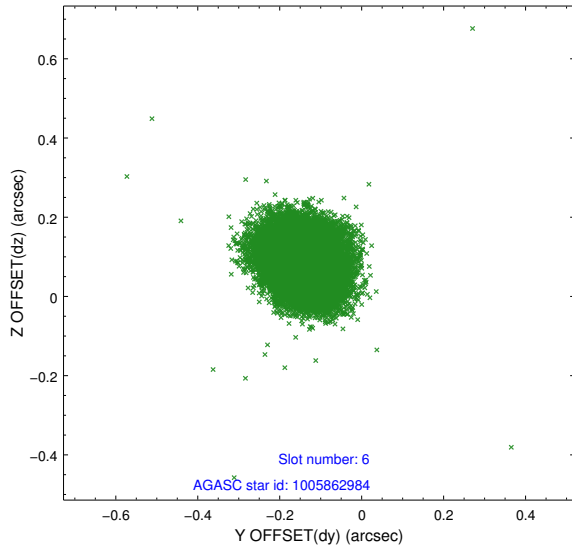
2.4.2 Slot 4



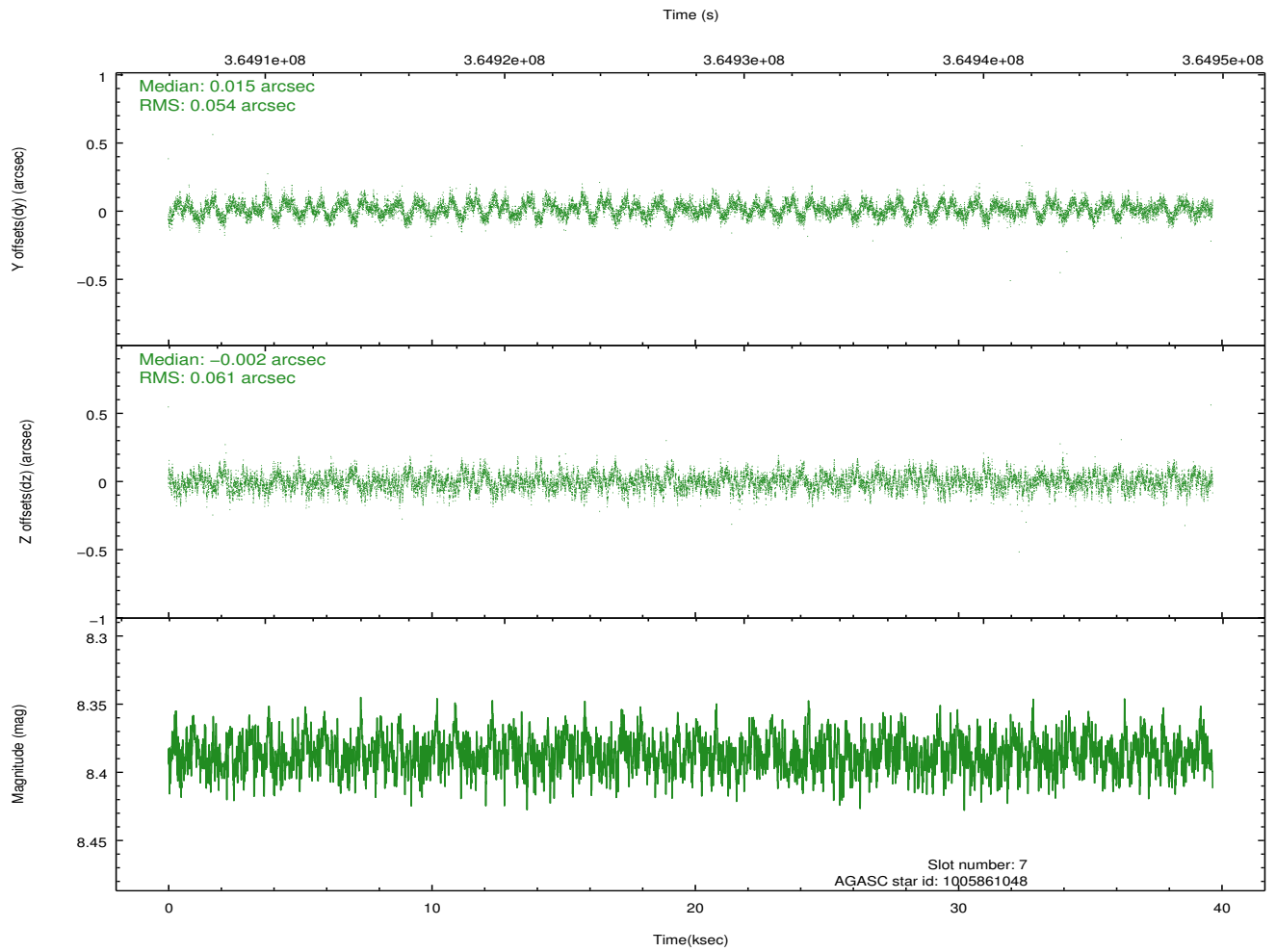
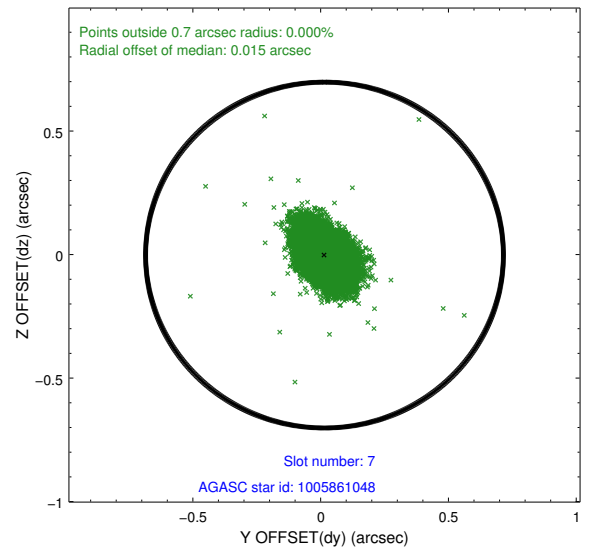
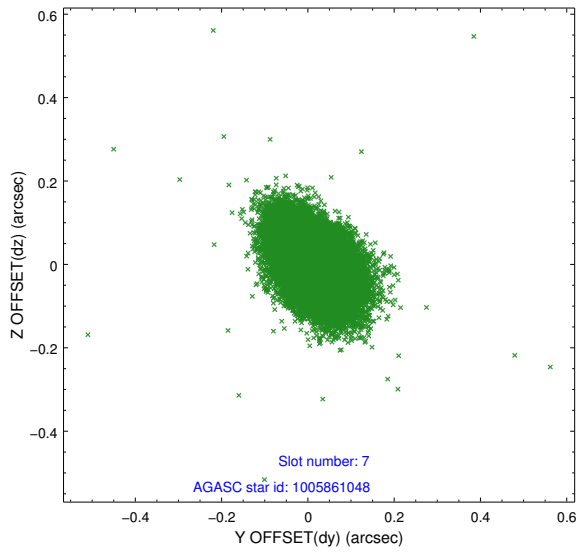
2.4.3 Slot 5



2.4.4 Slot 6

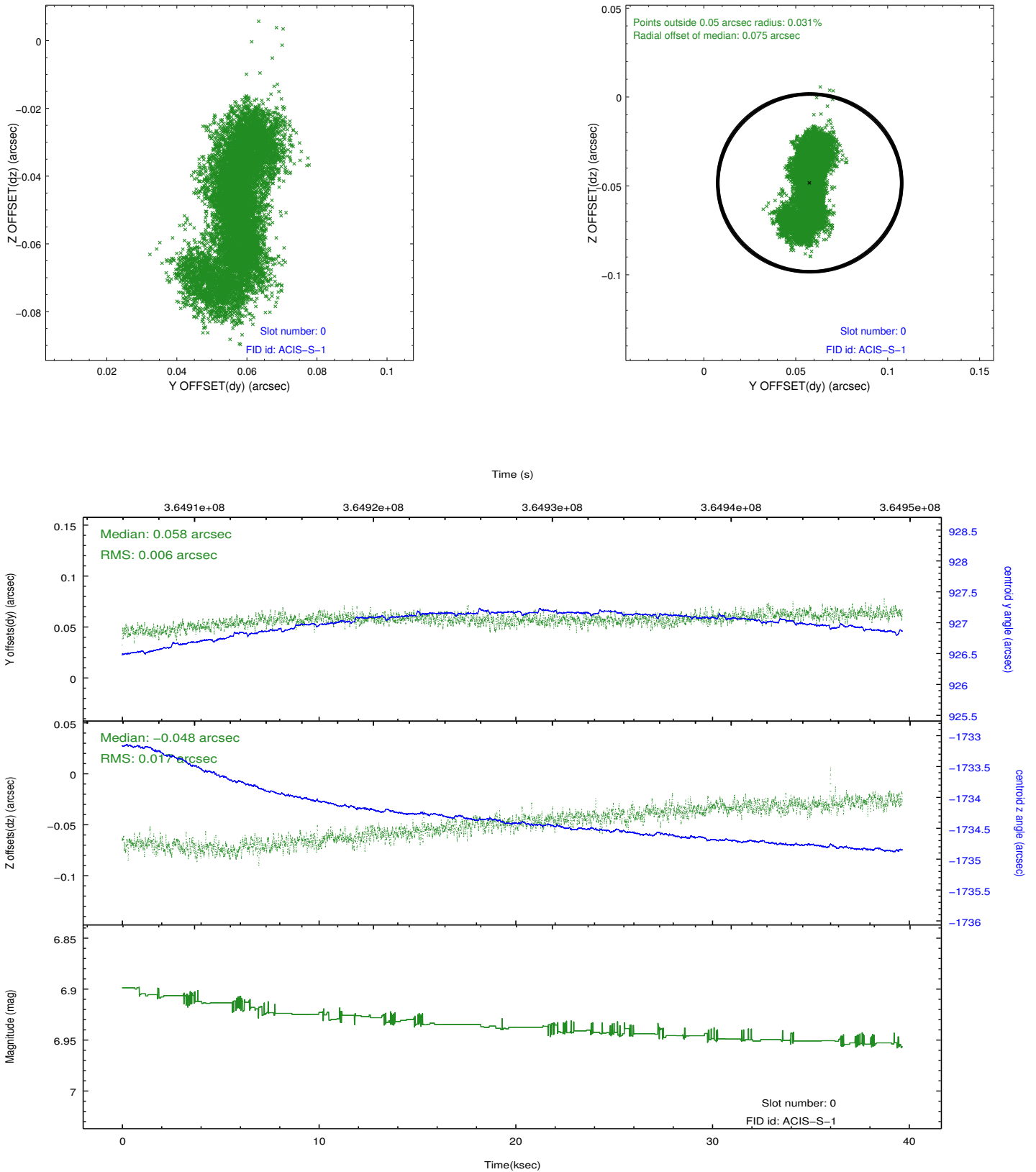


2.4.5 Slot 7

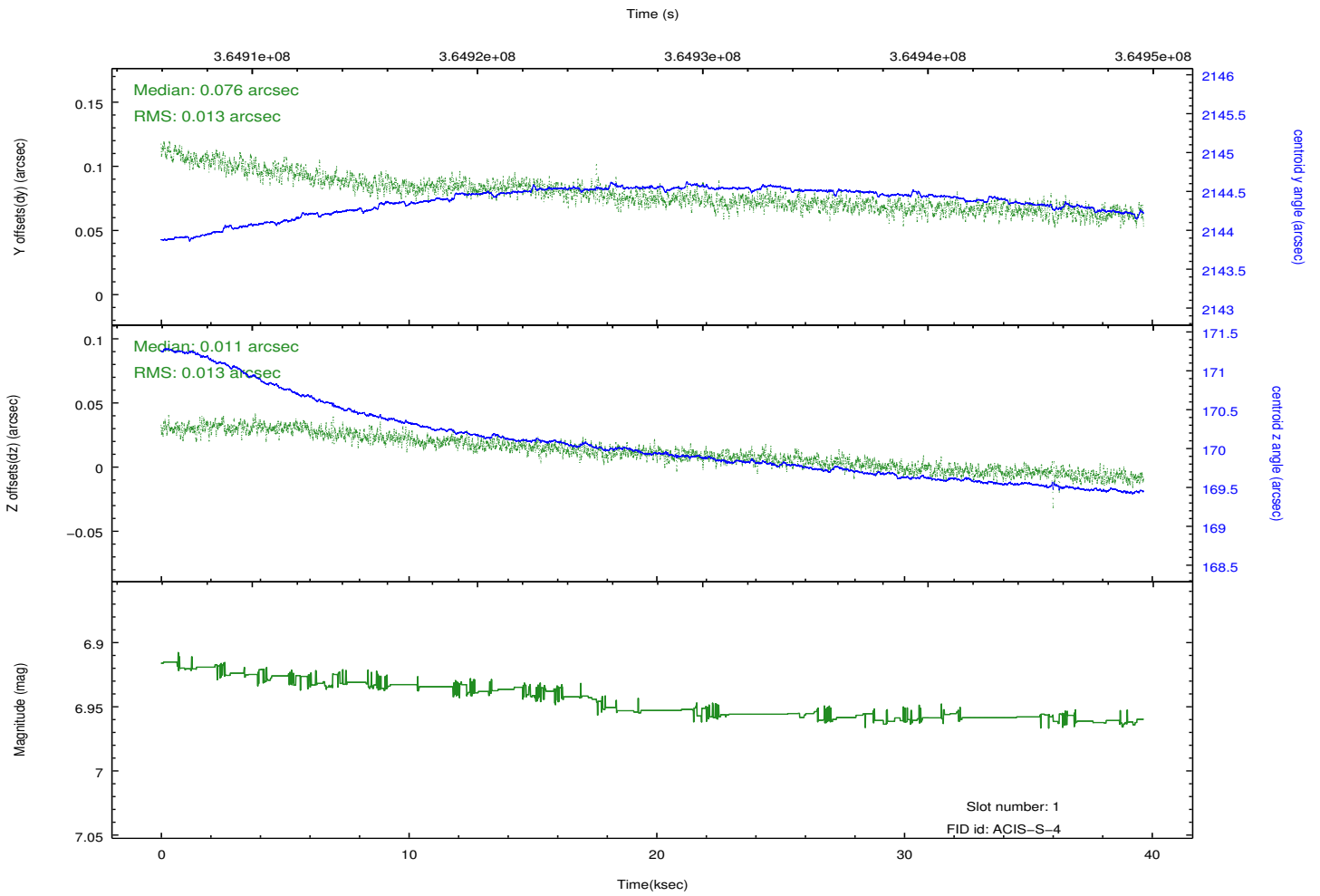
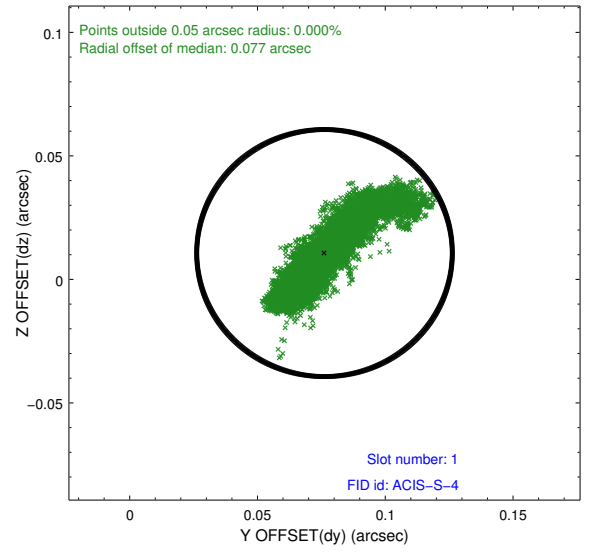
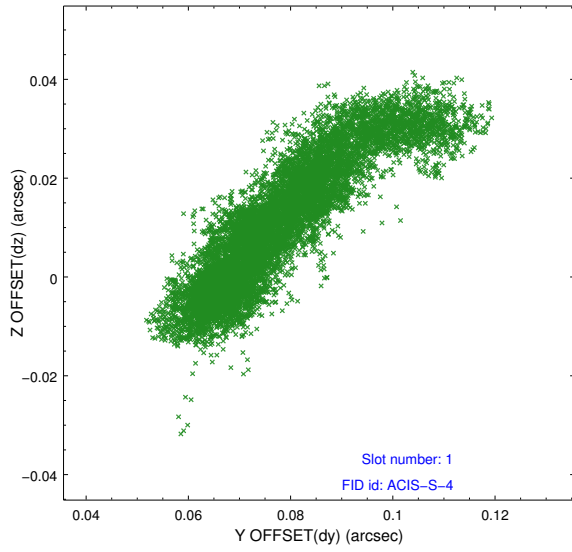


2.5 FID Slots

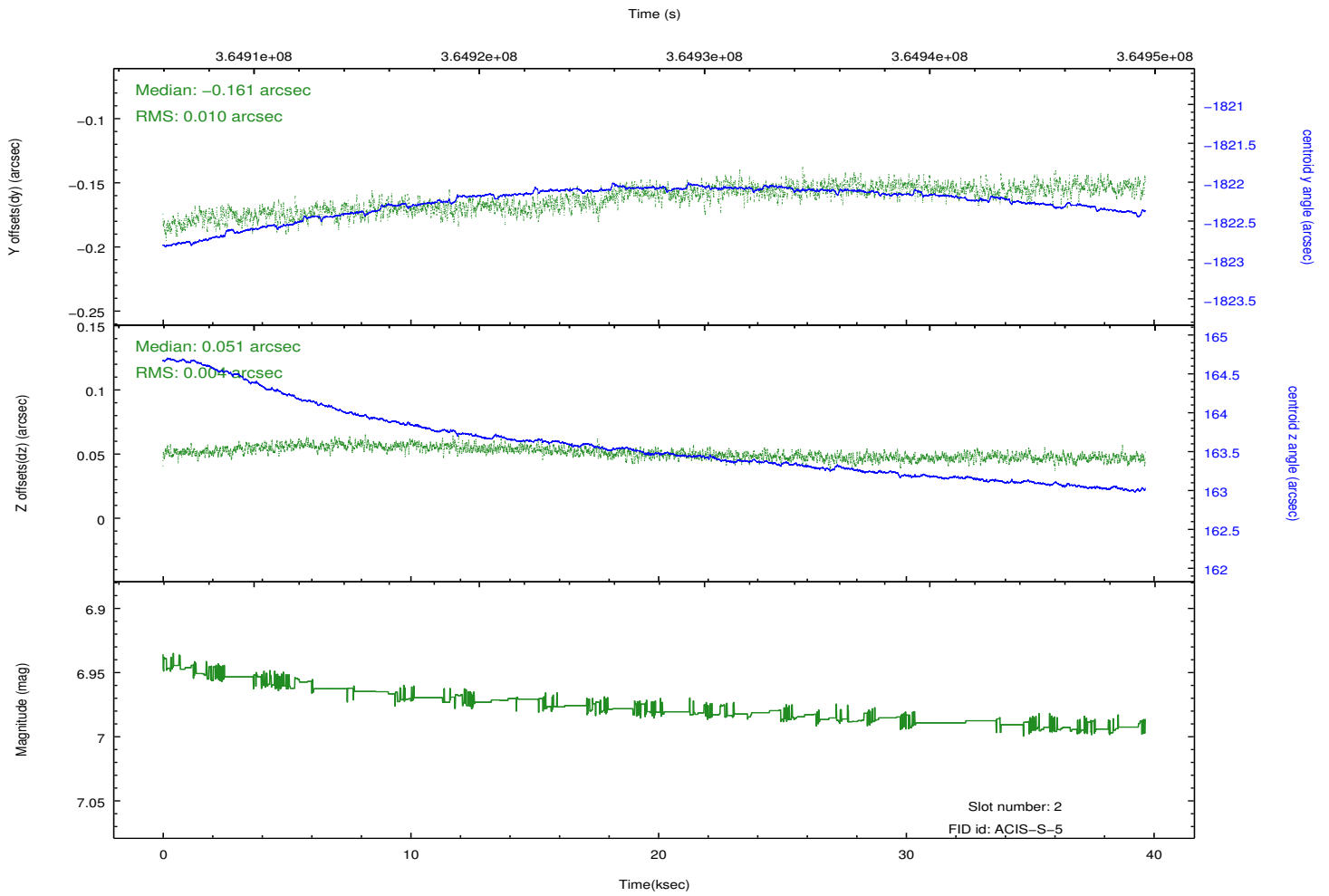
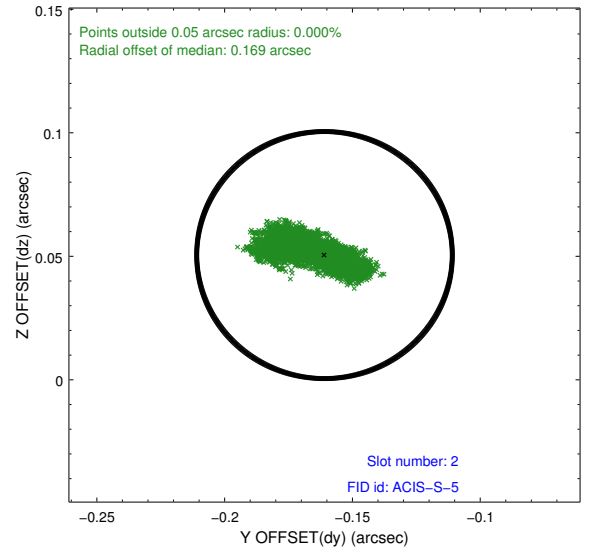
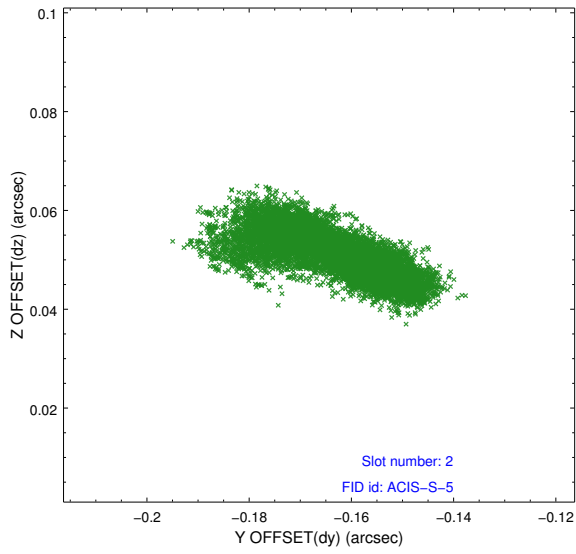
2.5.1 Slot 0



2.5.2 Slot 1



2.5.3 Slot 2



A Summary

A.1 Status

V&V Scientist	Jen Lauer
V&V Date (YYYY-MM-DD)	2012.06.14
V&V Edition	1
V&V Disposition and Status	OK
V&V Charge Time	38.5375998

A.2 Comments

Roll constraint met.